



Full wwPDB X-ray Structure Validation Report ⓘ

Aug 6, 2020 – 05:52 PM BST

PDB ID : 6HGU
Title : Crystal Structure of an anti-APP-tag Fab
Authors : Rondeau, J.M.; Goepfert, A.
Deposited on : 2018-08-23
Resolution : 1.50 Å(reported)

This is a Full wwPDB X-ray Structure Validation Report for a publicly released PDB entry.

We welcome your comments at validation@mail.wwpdb.org

A user guide is available at

<https://www.wwpdb.org/validation/2017/XrayValidationReportHelp>

with specific help available everywhere you see the ⓘ symbol.

The following versions of software and data (see [references ⓘ](#)) were used in the production of this report:

MolProbity : 4.02b-467
Mogul : 1.8.5 (274361), CSD as541be (2020)
Xtriage (Phenix) : 1.13
EDS : 2.13.1
Percentile statistics : 20191225.v01 (using entries in the PDB archive December 25th 2019)
Refmac : 5.8.0158
CCP4 : 7.0.044 (Gargrove)
Ideal geometry (proteins) : Engh & Huber (2001)
Ideal geometry (DNA, RNA) : Parkinson et al. (1996)
Validation Pipeline (wwPDB-VP) : 2.13.1

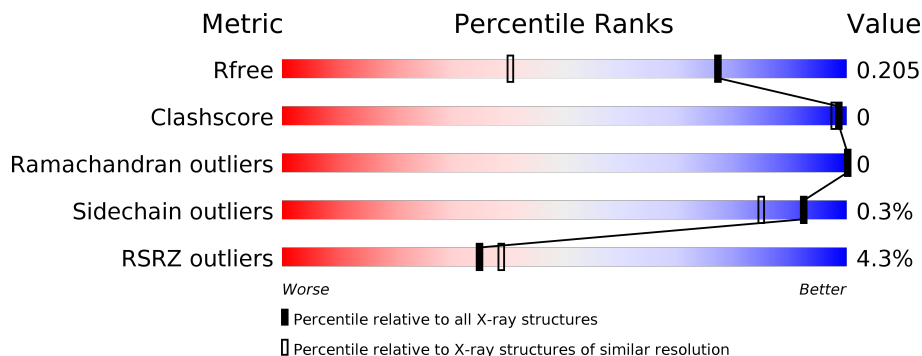
1 Overall quality at a glance

The following experimental techniques were used to determine the structure:

X-RAY DIFFRACTION

The reported resolution of this entry is 1.50 Å.

Percentile scores (ranging between 0-100) for global validation metrics of the entry are shown in the following graphic. The table shows the number of entries on which the scores are based.



Metric	Whole archive (#Entries)	Similar resolution (#Entries, resolution range(Å))
R_{free}	130704	2936 (1.50-1.50)
Clashscore	141614	3144 (1.50-1.50)
Ramachandran outliers	138981	3066 (1.50-1.50)
Sidechain outliers	138945	3064 (1.50-1.50)
RSRZ outliers	127900	2884 (1.50-1.50)

The table below summarises the geometric issues observed across the polymeric chains and their fit to the electron density. The red, orange, yellow and green segments on the lower bar indicate the fraction of residues that contain outliers for ≥ 3 , 2, 1 and 0 types of geometric quality criteria respectively. A grey segment represents the fraction of residues that are not modelled. The numeric value for each fraction is indicated below the corresponding segment, with a dot representing fractions $\leq 5\%$. The upper red bar (where present) indicates the fraction of residues that have poor fit to the electron density. The numeric value is given above the bar.

Mol	Chain	Length	Quality of chain
1	A	222	 8% 95%
1	H	222	 4% 94%
2	B	219	 3% 98%
2	L	219	 2% 96%

2 Entry composition [i](#)

There are 5 unique types of molecules in this entry. The entry contains 7495 atoms, of which 0 are hydrogens and 0 are deuteriums.

In the tables below, the ZeroOcc column contains the number of atoms modelled with zero occupancy, the AltConf column contains the number of residues with at least one atom in alternate conformation and the Trace column contains the number of residues modelled with at most 2 atoms.

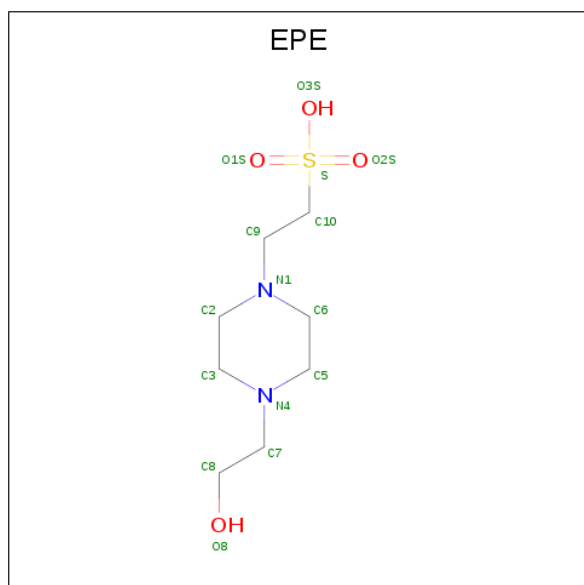
- Molecule 1 is a protein called anti-APP-tag Fab heavy-chain.

Mol	Chain	Residues	Atoms					ZeroOcc	AltConf	Trace
			Total	C	N	O	S			
1	A	213	Total 1622	C 1030	N 265	O 321	S 6	0	0	0
1	H	215	Total 1637	C 1038	N 267	O 325	S 7	0	1	0

- Molecule 2 is a protein called anti-APP-tag Fab light-chain.

Mol	Chain	Residues	Atoms					ZeroOcc	AltConf	Trace
			Total	C	N	O	S			
2	B	218	Total 1695	C 1058	N 290	O 341	S 6	0	1	0
2	L	218	Total 1690	C 1055	N 289	O 340	S 6	0	0	0

- Molecule 3 is 4-(2-HYDROXYETHYL)-1-PIPERAZINE ETHANESULFONIC ACID (three-letter code: EPE) (formula: C₈H₁₈N₂O₄S).



Mol	Chain	Residues	Atoms					ZeroOcc	AltConf
			Total	C	N	O	S		
3	A	1	15	8	2	4	1	0	0

- Molecule 4 is GLYCEROL (three-letter code: GOL) (formula: $C_3H_8O_3$).



Mol	Chain	Residues	Atoms			ZeroOcc	AltConf
			Total	C	O		
4	A	1	6	3	3	0	0
4	A	1	6	3	3	0	0
4	B	1	6	3	3	0	0
4	L	1	6	3	3	0	0

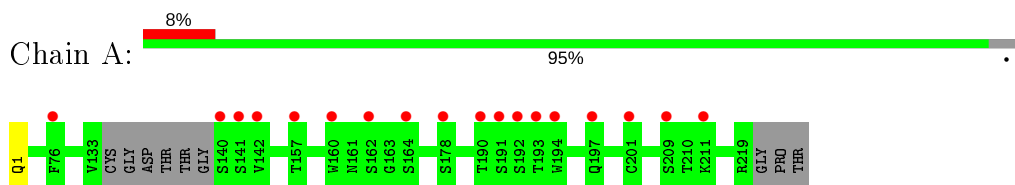
- Molecule 5 is water.

Mol	Chain	Residues	Atoms		ZeroOcc	AltConf
			Total	O		
5	A	219	219	219	0	0
5	B	184	184	184	0	0
5	H	215	215	215	0	0
5	L	194	194	194	0	0

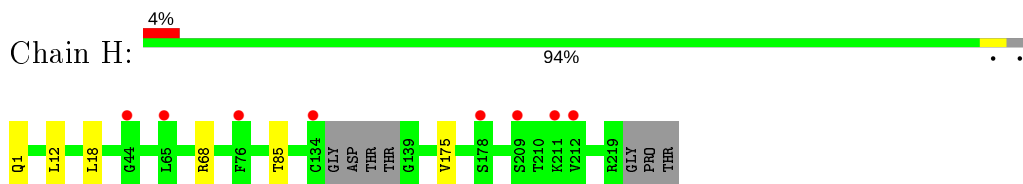
3 Residue-property plots [i](#)

These plots are drawn for all protein, RNA, DNA and oligosaccharide chains in the entry. The first graphic for a chain summarises the proportions of the various outlier classes displayed in the second graphic. The second graphic shows the sequence view annotated by issues in geometry and electron density. Residues are color-coded according to the number of geometric quality criteria for which they contain at least one outlier: green = 0, yellow = 1, orange = 2 and red = 3 or more. A red dot above a residue indicates a poor fit to the electron density ($RSRZ > 2$). Stretches of 2 or more consecutive residues without any outlier are shown as a green connector. Residues present in the sample, but not in the model, are shown in grey.

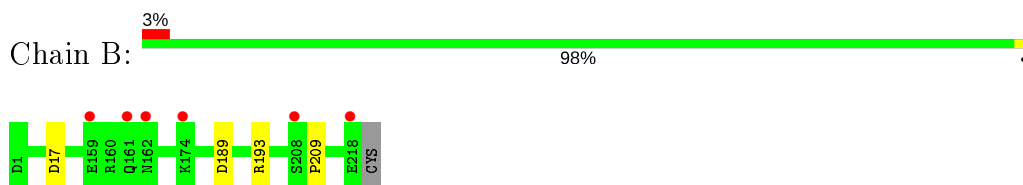
- Molecule 1: anti-APP-tag Fab heavy-chain



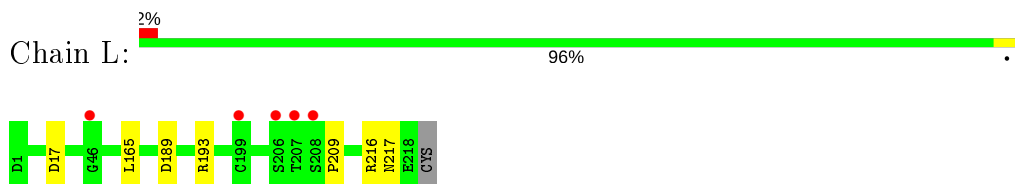
- Molecule 1: anti-APP-tag Fab heavy-chain



- Molecule 2: anti-APP-tag Fab light-chain



- Molecule 2: anti-APP-tag Fab light-chain



4 Data and refinement statistics

Property	Value	Source
Space group	P 1	Depositor
Cell constants a, b, c, α , β , γ	61.24Å 67.84Å 77.86Å 109.76° 92.36° 115.30°	Depositor
Resolution (Å)	15.15 – 1.50 35.75 – 1.50	Depositor EDS
% Data completeness (in resolution range)	96.4 (15.15-1.50) 96.4 (35.75-1.50)	Depositor EDS
R_{merge}	0.05	Depositor
R_{sym}	(Not available)	Depositor
$\langle I/\sigma(I) \rangle$ ¹	2.52 (at 1.50Å)	Xtrriage
Refinement program	BUSTER 2.11.7	Depositor
R, R_{free}	0.187 , 0.207 0.185 , 0.205	Depositor DCC
R_{free} test set	7954 reflections (4.98%)	wwPDB-VP
Wilson B-factor (Å ²)	21.7	Xtrriage
Anisotropy	0.335	Xtrriage
Bulk solvent k_{sol} (e/Å ³), B_{sol} (Å ²)	0.39 , 53.8	EDS
L-test for twinning ²	$\langle L \rangle = 0.50$, $\langle L^2 \rangle = 0.33$	Xtrriage
Estimated twinning fraction	0.014 for h,-h-k,-l	Xtrriage
F_o, F_c correlation	0.97	EDS
Total number of atoms	7495	wwPDB-VP
Average B, all atoms (Å ²)	31.0	wwPDB-VP

Xtrriage's analysis on translational NCS is as follows: *The largest off-origin peak in the Patterson function is 5.22% of the height of the origin peak. No significant pseudotranslation is detected.*

¹Intensities estimated from amplitudes.

²Theoretical values of $\langle |L| \rangle$, $\langle L^2 \rangle$ for acentric reflections are 0.5, 0.333 respectively for untwinned datasets, and 0.375, 0.2 for perfectly twinned datasets.

5 Model quality [i](#)

5.1 Standard geometry [i](#)

Bond lengths and bond angles in the following residue types are not validated in this section: GOL, EPE, PCA

The Z score for a bond length (or angle) is the number of standard deviations the observed value is removed from the expected value. A bond length (or angle) with $|Z| > 5$ is considered an outlier worth inspection. RMSZ is the root-mean-square of all Z scores of the bond lengths (or angles).

Mol	Chain	Bond lengths		Bond angles	
		RMSZ	# Z >5	RMSZ	# Z >5
1	A	0.47	0/1659	0.66	0/2273
1	H	0.50	0/1677	0.66	0/2297
2	B	0.51	0/1736	0.66	1/2357 (0.0%)
2	L	0.52	0/1728	0.66	1/2346 (0.0%)
All	All	0.50	0/6800	0.66	2/9273 (0.0%)

There are no bond length outliers.

All (2) bond angle outliers are listed below:

Mol	Chain	Res	Type	Atoms	Z	Observed(°)	Ideal(°)
2	B	17	ASP	CA-CB-CG	6.74	128.23	113.40
2	L	17	ASP	CA-CB-CG	6.72	128.19	113.40

There are no chirality outliers.

There are no planarity outliers.

5.2 Too-close contacts [i](#)

In the following table, the Non-H and H(model) columns list the number of non-hydrogen atoms and hydrogen atoms in the chain respectively. The H(added) column lists the number of hydrogen atoms added and optimized by MolProbity. The Clashes column lists the number of clashes within the asymmetric unit, whereas Symm-Clashes lists symmetry related clashes.

Mol	Chain	Non-H	H(model)	H(added)	Clashes	Symm-Clashes
1	A	1622	0	1582	0	0
1	H	1637	0	1594	3	0
2	B	1695	0	1643	1	0
2	L	1690	0	1637	3	0
3	A	15	0	17	0	0

Continued on next page...

Continued from previous page...

Mol	Chain	Non-H	H(model)	H(added)	Clashes	Symm-Clashes
4	A	12	0	16	0	0
4	B	6	0	8	0	0
4	L	6	0	8	0	0
5	A	219	0	0	0	0
5	B	184	0	0	0	0
5	H	215	0	0	0	0
5	L	194	0	0	0	0
All	All	7495	0	6505	6	0

The all-atom clashscore is defined as the number of clashes found per 1000 atoms (including hydrogen atoms). The all-atom clashscore for this structure is 0.

All (6) close contacts within the same asymmetric unit are listed below, sorted by their clash magnitude.

Atom-1	Atom-2	Interatomic distance (Å)	Clash overlap (Å)
2:L:216:ARG:NH1	2:L:217:ASN:HD21	1.87	0.73
2:B:189:ASP:O	2:B:193:ARG:HG3	2.12	0.50
1:H:175:VAL:HG21	2:L:165:LEU:HB3	1.94	0.50
2:L:189:ASP:O	2:L:193:ARG:HG3	2.11	0.49
1:H:12:LEU:HD11	1:H:18:LEU:HA	1.97	0.46
1:H:68:ARG:HD2	1:H:85:THR:O	2.21	0.40

There are no symmetry-related clashes.

5.3 Torsion angles [i](#)

5.3.1 Protein backbone [i](#)

In the following table, the Percentiles column shows the percent Ramachandran outliers of the chain as a percentile score with respect to all X-ray entries followed by that with respect to entries of similar resolution.

The Analysed column shows the number of residues for which the backbone conformation was analysed, and the total number of residues.

Mol	Chain	Analysed	Favoured	Allowed	Outliers	Percentiles	
1	A	209/222 (94%)	207 (99%)	2 (1%)	0	100	100
1	H	212/222 (96%)	210 (99%)	2 (1%)	0	100	100
2	B	217/219 (99%)	215 (99%)	2 (1%)	0	100	100

Continued on next page...

Continued from previous page...

Mol	Chain	Analysed	Favoured	Allowed	Outliers	Percentiles	
2	L	216/219 (99%)	214 (99%)	2 (1%)	0	100	100
All	All	854/882 (97%)	846 (99%)	8 (1%)	0	100	100

There are no Ramachandran outliers to report.

5.3.2 Protein sidechains [i](#)

In the following table, the Percentiles column shows the percent sidechain outliers of the chain as a percentile score with respect to all X-ray entries followed by that with respect to entries of similar resolution.

The Analysed column shows the number of residues for which the sidechain conformation was analysed, and the total number of residues.

Mol	Chain	Analysed	Rotameric	Outliers	Percentiles	
1	A	188/194 (97%)	188 (100%)	0	100	100
1	H	190/194 (98%)	190 (100%)	0	100	100
2	B	197/197 (100%)	196 (100%)	1 (0%)	88	78
2	L	196/197 (100%)	195 (100%)	1 (0%)	88	78
All	All	771/782 (99%)	769 (100%)	2 (0%)	92	85

All (2) residues with a non-rotameric sidechain are listed below:

Mol	Chain	Res	Type
2	B	209	PRO
2	L	209	PRO

Some sidechains can be flipped to improve hydrogen bonding and reduce clashes. All (3) such sidechains are listed below:

Mol	Chain	Res	Type
2	L	166	ASN
2	L	195	ASN
2	L	217	ASN

5.3.3 RNA [i](#)

There are no RNA molecules in this entry.

5.4 Non-standard residues in protein, DNA, RNA chains

2 non-standard protein/DNA/RNA residues are modelled in this entry.

In the following table, the Counts columns list the number of bonds (or angles) for which Mogul statistics could be retrieved, the number of bonds (or angles) that are observed in the model and the number of bonds (or angles) that are defined in the Chemical Component Dictionary. The Link column lists molecule types, if any, to which the group is linked. The Z score for a bond length (or angle) is the number of standard deviations the observed value is removed from the expected value. A bond length (or angle) with $|Z| > 2$ is considered an outlier worth inspection. RMSZ is the root-mean-square of all Z scores of the bond lengths (or angles).

Mol	Type	Chain	Res	Link	Bond lengths			Bond angles		
					Counts	RMSZ	# Z > 2	Counts	RMSZ	# Z > 2
1	PCA	A	1	1	7,8,9	0.74	0	9,10,12	2.18	2 (22%)
1	PCA	H	1	1	7,8,9	0.75	0	9,10,12	3.03	2 (22%)

In the following table, the Chirals column lists the number of chiral outliers, the number of chiral centers analysed, the number of these observed in the model and the number defined in the Chemical Component Dictionary. Similar counts are reported in the Torsion and Rings columns. '-' means no outliers of that kind were identified.

Mol	Type	Chain	Res	Link	Chirals	Torsions	Rings
1	PCA	A	1	1	-	0/0/11/13	0/1/1/1
1	PCA	H	1	1	-	0/0/11/13	0/1/1/1

There are no bond length outliers.

All (4) bond angle outliers are listed below:

Mol	Chain	Res	Type	Atoms	Z	Observed(°)	Ideal(°)
1	H	1	PCA	CB-CA-C	-8.13	101.52	112.70
1	A	1	PCA	CB-CA-C	-5.69	104.87	112.70
1	H	1	PCA	OE-CD-CG	-2.74	121.97	126.76
1	A	1	PCA	OE-CD-CG	-2.04	123.20	126.76

There are no chirality outliers.

There are no torsion outliers.

There are no ring outliers.

No monomer is involved in short contacts.

5.5 Carbohydrates [i](#)

There are no monosaccharides in this entry.

5.6 Ligand geometry [i](#)

5 ligands are modelled in this entry.

In the following table, the Counts columns list the number of bonds (or angles) for which Mogul statistics could be retrieved, the number of bonds (or angles) that are observed in the model and the number of bonds (or angles) that are defined in the Chemical Component Dictionary. The Link column lists molecule types, if any, to which the group is linked. The Z score for a bond length (or angle) is the number of standard deviations the observed value is removed from the expected value. A bond length (or angle) with $|Z| > 2$ is considered an outlier worth inspection. RMSZ is the root-mean-square of all Z scores of the bond lengths (or angles).

Mol	Type	Chain	Res	Link	Bond lengths			Bond angles		
					Counts	RMSZ	# Z > 2	Counts	RMSZ	# Z > 2
4	GOL	A	302	-	5,5,5	0.18	0	5,5,5	0.61	0
4	GOL	L	301	-	5,5,5	0.10	0	5,5,5	0.35	0
4	GOL	A	303	-	5,5,5	0.11	0	5,5,5	0.18	0
3	EPE	A	301	-	15,15,15	1.39	1 (6%)	18,20,20	0.29	0
4	GOL	B	301	-	5,5,5	0.10	0	5,5,5	0.24	0

In the following table, the Chirals column lists the number of chiral outliers, the number of chiral centers analysed, the number of these observed in the model and the number defined in the Chemical Component Dictionary. Similar counts are reported in the Torsion and Rings columns. '-' means no outliers of that kind were identified.

Mol	Type	Chain	Res	Link	Chirals	Torsions	Rings
4	GOL	A	302	-	-	0/4/4/4	-
4	GOL	L	301	-	-	0/4/4/4	-
4	GOL	A	303	-	-	0/4/4/4	-
3	EPE	A	301	-	-	0/9/19/19	0/1/1/1
4	GOL	B	301	-	-	0/4/4/4	-

All (1) bond length outliers are listed below:

Mol	Chain	Res	Type	Atoms	Z	Observed(Å)	Ideal(Å)
3	A	301	EPE	C10-S	-5.34	1.69	1.77

There are no bond angle outliers.

There are no chirality outliers.

There are no torsion outliers.

There are no ring outliers.

No monomer is involved in short contacts.

5.7 Other polymers

There are no such residues in this entry.

5.8 Polymer linkage issues

There are no chain breaks in this entry.

6 Fit of model and data

6.1 Protein, DNA and RNA chains

In the following table, the column labelled ‘#RSRZ> 2’ contains the number (and percentage) of RSRZ outliers, followed by percent RSRZ outliers for the chain as percentile scores relative to all X-ray entries and entries of similar resolution. The OWAB column contains the minimum, median, 95th percentile and maximum values of the occupancy-weighted average B-factor per residue. The column labelled ‘Q< 0.9’ lists the number of (and percentage) of residues with an average occupancy less than 0.9.

Mol	Chain	Analysed	<RSRZ>	#RSRZ>2	OWAB(Å ²)	Q<0.9
1	A	212/222 (95%)	0.49	18 (8%) 10 11	18, 29, 51, 69	0
1	H	214/222 (96%)	0.23	8 (3%) 41 46	16, 27, 45, 75	0
2	B	218/219 (99%)	0.25	6 (2%) 53 57	17, 29, 52, 99	0
2	L	218/219 (99%)	0.16	5 (2%) 60 65	18, 27, 50, 94	0
All	All	862/882 (97%)	0.28	37 (4%) 35 39	16, 28, 50, 99	0

All (37) RSRZ outliers are listed below:

Mol	Chain	Res	Type	RSRZ
1	H	134	CYS	5.0
1	H	76	PHE	4.8
1	A	211	LYS	4.5
1	A	76	PHE	4.5
1	A	140	SER	4.4
1	A	192	SER	4.0
1	H	211	LYS	3.9
1	A	193	THR	3.7
1	A	141	SER	3.7
2	L	207	THR	3.7
1	A	209	SER	3.7
1	A	142	VAL	3.7
2	B	161	GLN	3.7
1	H	44	GLY	3.6
1	H	209	SER	3.4
1	A	190	THR	3.2
1	A	162	SER	3.1
1	A	160	TRP	3.1
1	H	178	SER	2.9
1	A	178	SER	2.8
1	A	201	CYS	2.8

Continued on next page...

Continued from previous page...

Mol	Chain	Res	Type	RSRZ
1	A	194	TRP	2.6
2	B	174	LYS	2.6
1	H	212	VAL	2.6
1	A	191	SER	2.5
2	L	46	GLY	2.5
2	L	208	SER	2.4
2	B	208	SER	2.3
1	H	65	LEU	2.3
1	A	197	GLN	2.2
1	A	157	THR	2.2
2	B	218	GLU	2.2
2	L	206	SER	2.1
2	B	162	ASN	2.1
1	A	164	SER	2.1
2	B	159	GLU	2.0
2	L	199	CYS	2.0

6.2 Non-standard residues in protein, DNA, RNA chains [i](#)

In the following table, the Atoms column lists the number of modelled atoms in the group and the number defined in the chemical component dictionary. The B-factors column lists the minimum, median, 95th percentile and maximum values of B factors of atoms in the group. The column labelled 'Q< 0.9' lists the number of atoms with occupancy less than 0.9.

Mol	Type	Chain	Res	Atoms	RSCC	RSR	B-factors(Å ²)	Q<0.9
1	PCA	H	1	8/9	0.89	0.21	32,34,38,41	0
1	PCA	A	1	8/9	0.90	0.24	35,43,47,49	0

6.3 Carbohydrates [i](#)

There are no monosaccharides in this entry.

6.4 Ligands [i](#)

In the following table, the Atoms column lists the number of modelled atoms in the group and the number defined in the chemical component dictionary. The B-factors column lists the minimum, median, 95th percentile and maximum values of B factors of atoms in the group. The column labelled 'Q< 0.9' lists the number of atoms with occupancy less than 0.9.

Mol	Type	Chain	Res	Atoms	RSCC	RSR	B-factors(\AA^2)	Q<0.9
4	GOL	L	301	6/6	0.70	0.21	34,42,44,46	0
4	GOL	A	302	6/6	0.85	0.17	24,29,30,32	0
4	GOL	A	303	6/6	0.91	0.12	33,39,42,46	0
3	EPE	A	301	15/15	0.93	0.14	26,33,45,47	15
4	GOL	B	301	6/6	0.96	0.12	29,32,33,34	0

6.5 Other polymers [i](#)

There are no such residues in this entry.