



Full wwPDB X-ray Structure Validation Report ⓘ

Jan 8, 2024 – 01:03 am GMT

PDB ID : 6HG0
Title : Influenza A Virus N9 Neuraminidase complex with NANA (Tern/Australia).
Authors : Salinger, M.T.; Hobbs, J.R.; Murray, J.W.; Laver, W.G.; Kuhn, P.; Garman, E.F.
Deposited on : 2018-08-22
Resolution : 1.30 Å(reported)

This is a Full wwPDB X-ray Structure Validation Report for a publicly released PDB entry.

We welcome your comments at validation@mail.wwpdb.org

A user guide is available at

<https://www.wwpdb.org/validation/2017/XrayValidationReportHelp>

with specific help available everywhere you see the ⓘ symbol.

The types of validation reports are described at

<http://www.wwpdb.org/validation/2017/FAQs#types>.

The following versions of software and data (see [references ⓘ](#)) were used in the production of this report:

MolProbity : 4.02b-467
Mogul : 1.8.4, CSD as541be (2020)
Xtriage (Phenix) : 1.13
EDS : 2.36
buster-report : 1.1.7 (2018)
Percentile statistics : 20191225.v01 (using entries in the PDB archive December 25th 2019)
Refmac : 5.8.0158
CCP4 : 7.0.044 (Gargrove)
Ideal geometry (proteins) : Engh & Huber (2001)
Ideal geometry (DNA, RNA) : Parkinson et al. (1996)
Validation Pipeline (wwPDB-VP) : 2.36

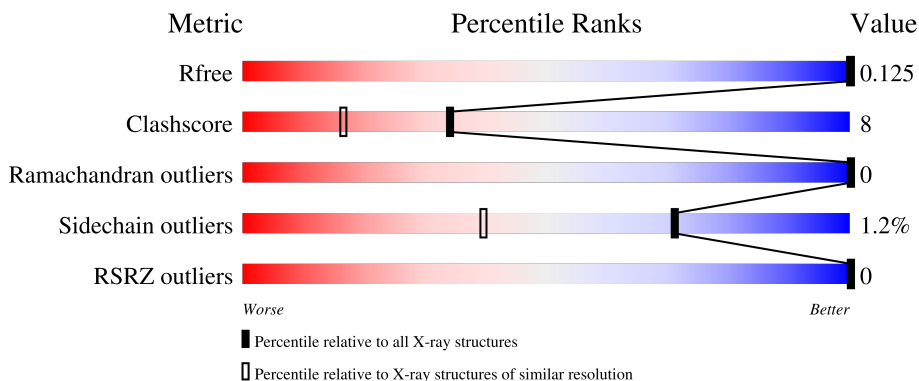
1 Overall quality at a glance

The following experimental techniques were used to determine the structure:

X-RAY DIFFRACTION


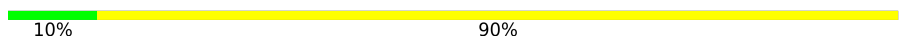

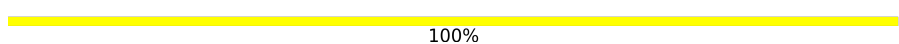
The reported resolution of this entry is 1.30 Å.

Percentile scores (ranging between 0-100) for global validation metrics of the entry are shown in the following graphic. The table shows the number of entries on which the scores are based.



Metric	Whole archive (#Entries)	Similar resolution (#Entries, resolution range(Å))
R_{free}	130704	1058 (1.30-1.30)
Clashscore	141614	1101 (1.30-1.30)
Ramachandran outliers	138981	1058 (1.30-1.30)
Sidechain outliers	138945	1058 (1.30-1.30)
RSRZ outliers	127900	1029 (1.30-1.30)

The table below summarises the geometric issues observed across the polymeric chains and their fit to the electron density. The red, orange, yellow and green segments of the lower bar indicate the fraction of residues that contain outliers for ≥ 3 , 2, 1 and 0 types of geometric quality criteria respectively. A grey segment represents the fraction of residues that are not modelled. The numeric value for each fraction is indicated below the corresponding segment, with a dot representing fractions $\leq 5\%$. The upper red bar (where present) indicates the fraction of residues that have poor fit to the electron density. The numeric value is given above the bar.

Mol	Chain	Length	Quality of chain
1	A	388	 89% 9% ..
2	B	10	 10% 90%
3	C	2	 50% 50%
3	D	2	 100%

The following table lists non-polymeric compounds, carbohydrate monomers and non-standard

residues in protein, DNA, RNA chains that are outliers for geometric or electron-density-fit criteria:

Mol	Type	Chain	Res	Chirality	Geometry	Clashes	Electron density
5	GOL	A	518	-	-	X	-
5	GOL	A	519	-	-	X	-
6	PO4	A	521	-	-	X	-

2 Entry composition i

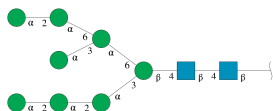
There are 9 unique types of molecules in this entry. The entry contains 4347 atoms, of which 0 are hydrogens and 0 are deuteriums.

In the tables below, the ZeroOcc column contains the number of atoms modelled with zero occupancy, the AltConf column contains the number of residues with at least one atom in alternate conformation and the Trace column contains the number of residues modelled with at most 2 atoms.

- Molecule 1 is a protein called Neuraminidase.

Mol	Chain	Residues	Atoms					ZeroOcc	AltConf	Trace
			Total	C	N	O	S			
1	A	388	3366	2085	599	652	30	0	36	0

- Molecule 2 is an oligosaccharide called alpha-D-mannopyranose-(1-2)-alpha-D-mannopyranose-(1-2)-alpha-D-mannopyranose-(1-3)-[alpha-D-mannopyranose-(1-2)-alpha-D-mannopyranose-(1-6)-[alpha-D-mannopyranose-(1-3)]alpha-D-mannopyranose-(1-6)]beta-D-mannopyranose-(1-4)-2-acetamido-2-deoxy-beta-D-glucopyranose-(1-4)-2-acetamido-2-deoxy-beta-D-glucopyranose.



Mol	Chain	Residues	Atoms				ZeroOcc	AltConf	Trace
			Total	C	N	O			
2	B	10	116	64	2	50	0	0	0

- Molecule 3 is an oligosaccharide called 2-acetamido-2-deoxy-beta-D-glucopyranose-(1-4)-2-acetamido-2-deoxy-beta-D-glucopyranose.



Mol	Chain	Residues	Atoms				ZeroOcc	AltConf	Trace
			Total	C	N	O			
3	C	2	28	16	2	10	0	0	0
3	D	2	28	16	2	10	0	0	0

- Molecule 4 is CALCIUM ION (three-letter code: CA) (formula: Ca).

Mol	Chain	Residues	Atoms		ZeroOcc	AltConf
4	A	2	Total	Ca	0	0
			2	2		

- Molecule 5 is GLYCEROL (three-letter code: GOL) (formula: $C_3H_8O_3$).



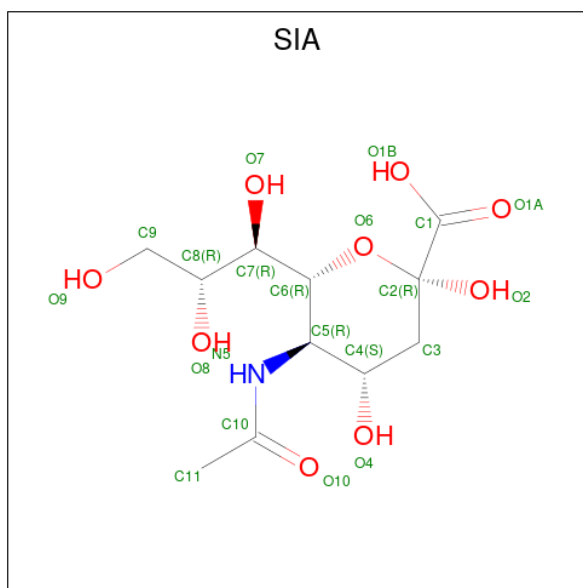
Mol	Chain	Residues	Atoms			ZeroOcc	AltConf
5	A	1	Total	C	O	0	1
			12	6	6		
5	A	1	Total	C	O	0	0
			6	3	3		
5	A	1	Total	C	O	0	0
			6	3	3		
5	A	1	Total	C	O	0	0
			6	3	3		

- Molecule 6 is PHOSPHATE ION (three-letter code: PO4) (formula: O_4P).



Mol	Chain	Residues	Atoms			ZeroOcc	AltConf
6	A	1	Total	O	P	0	0
			5	4	1		

- Molecule 7 is N-acetyl-alpha-neuraminic acid (three-letter code: SIA) (formula: $C_{11}H_{19}NO_9$).



Mol	Chain	Residues	Atoms			ZeroOcc	AltConf	
7	A	1	Total	C	N	O	0	0
			21	11	1	9		
7	A	1	Total	C	N	O	0	0
			21	11	1	9		

- Molecule 8 is POTASSIUM ION (three-letter code: K) (formula: K).

Mol	Chain	Residues	Atoms	ZeroOcc	AltConf
8	A	1	Total K 1 1	0	0


- Molecule 9 is water.

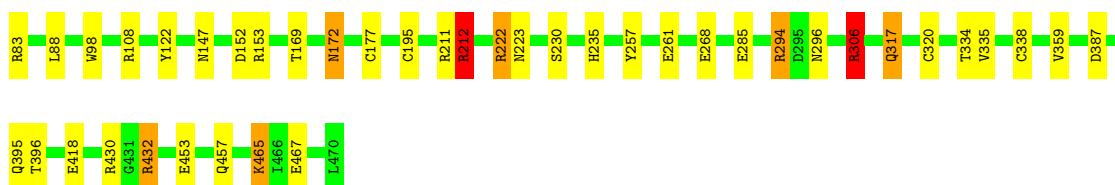
Mol	Chain	Residues	Atoms	ZeroOcc	AltConf
9	A	727	Total O 729 729	0	2

3 Residue-property plots

These plots are drawn for all protein, RNA, DNA and oligosaccharide chains in the entry. The first graphic for a chain summarises the proportions of the various outlier classes displayed in the second graphic. The second graphic shows the sequence view annotated by issues in geometry and electron density. Residues are color-coded according to the number of geometric quality criteria for which they contain at least one outlier: green = 0, yellow = 1, orange = 2 and red = 3 or more. A red dot above a residue indicates a poor fit to the electron density ($RSRZ > 2$). Stretches of 2 or more consecutive residues without any outlier are shown as a green connector. Residues present in the sample, but not in the model, are shown in grey.

- Molecule 1: Neuraminidase

Chain A: 



- Molecule 2: alpha-D-mannopyranose-(1-2)-alpha-D-mannopyranose-(1-2)-alpha-D-mannopyranose-(1-3)-[alpha-D-mannopyranose-(1-2)-alpha-D-mannopyranose-(1-6)-[alpha-D-mannopyranose-(1-3)]alpha-D-mannopyranose-(1-6)]beta-D-mannopyranose-(1-4)-2-acetamido-2-deoxy-beta-D-glucopyranose-(1-4)-2-acetamido-2-deoxy-beta-D-glucopyranose

Chain B: 



- Molecule 3: 2-acetamido-2-deoxy-beta-D-glucopyranose-(1-4)-2-acetamido-2-deoxy-beta-D-glucopyranose

Chain C: 



- Molecule 3: 2-acetamido-2-deoxy-beta-D-glucopyranose-(1-4)-2-acetamido-2-deoxy-beta-D-glucopyranose

Chain D: 



4 Data and refinement statistics

Property	Value	Source
Space group	I 4 3 2	Depositor
Cell constants a, b, c, α , β , γ	181.20Å 181.20Å 181.20Å 90.00° 90.00° 90.00°	Depositor
Resolution (Å)	48.47 – 1.30 48.43 – 1.30	Depositor EDS
% Data completeness (in resolution range)	99.7 (48.47-1.30) 99.7 (48.43-1.30)	Depositor EDS
R_{merge}	(Not available)	Depositor
R_{sym}	0.10	Depositor
$\langle I/\sigma(I) \rangle$ ¹	4.51 (at 1.30Å)	Xtrriage
Refinement program	REFMAC 5.8.0230	Depositor
R, R_{free}	0.091 , 0.120 0.098 , 0.125	Depositor DCC
R_{free} test set	6197 reflections (5.06%)	wwPDB-VP
Wilson B-factor (Å ²)	10.1	Xtrriage
Anisotropy	0.000	Xtrriage
Bulk solvent k_{sol} (e/Å ³), B_{sol} (Å ²)	0.37 , 55.8	EDS
L-test for twinning ²	$\langle L \rangle = 0.51$, $\langle L^2 \rangle = 0.35$	Xtrriage
Estimated twinning fraction	No twinning to report.	Xtrriage
F_o, F_c correlation	0.98	EDS
Total number of atoms	4347	wwPDB-VP
Average B, all atoms (Å ²)	15.0	wwPDB-VP

Xtrriage's analysis on translational NCS is as follows: *The largest off-origin peak in the Patterson function is 2.90% of the height of the origin peak. No significant pseudotranslation is detected.*

¹Intensities estimated from amplitudes.

²Theoretical values of $\langle |L| \rangle$, $\langle L^2 \rangle$ for acentric reflections are 0.5, 0.333 respectively for untwinned datasets, and 0.375, 0.2 for perfectly twinned datasets.

5 Model quality i

5.1 Standard geometry i

Bond lengths and bond angles in the following residue types are not validated in this section: MAN, SIA, CA, K, NAG, BMA, PO4, GOL

The Z score for a bond length (or angle) is the number of standard deviations the observed value is removed from the expected value. A bond length (or angle) with $|Z| > 5$ is considered an outlier worth inspection. RMSZ is the root-mean-square of all Z scores of the bond lengths (or angles).

Mol	Chain	Bond lengths		Bond angles	
		RMSZ	# $ Z > 5$	RMSZ	# $ Z > 5$
1	A	0.92	7/3449 (0.2%)	0.98	6/4691 (0.1%)

Chiral center outliers are detected by calculating the chiral volume of a chiral center and verifying if the center is modelled as a planar moiety or with the opposite hand. A planarity outlier is detected by checking planarity of atoms in a peptide group, atoms in a mainchain group or atoms of a sidechain that are expected to be planar.

Mol	Chain	#Chirality outliers	#Planarity outliers
1	A	0	7

All (7) bond length outliers are listed below:

Mol	Chain	Res	Type	Atoms	Z	Observed(Å)	Ideal(Å)
1	A	418	GLU	CD-OE1	16.73	1.44	1.25
1	A	261	GLU	CD-OE2	-10.28	1.14	1.25
1	A	285	GLU	CD-OE2	7.82	1.34	1.25
1	A	453	GLU	CD-OE1	-7.42	1.17	1.25
1	A	268[A]	GLU	CD-OE1	7.15	1.33	1.25
1	A	268[B]	GLU	CD-OE1	7.15	1.33	1.25
1	A	261	GLU	CD-OE1	-7.01	1.18	1.25

All (6) bond angle outliers are listed below:

Mol	Chain	Res	Type	Atoms	Z	Observed(°)	Ideal(°)
1	A	432	ARG	NE-CZ-NH1	-7.42	116.59	120.30
1	A	430	ARG	NE-CZ-NH1	-5.70	117.45	120.30
1	A	212[A]	ARG	NH1-CZ-NH2	-5.35	113.51	119.40
1	A	212[B]	ARG	NH1-CZ-NH2	-5.35	113.51	119.40
1	A	294	ARG	NE-CZ-NH1	-5.34	117.63	120.30
1	A	257	TYR	CB-CG-CD1	5.08	124.05	121.00

There are no chirality outliers.

All (7) planarity outliers are listed below:

Mol	Chain	Res	Type	Group
1	A	211	ARG	Sidechain
1	A	212[A]	ARG	Sidechain
1	A	222[A]	ARG	Sidechain
1	A	306[A]	ARG	Sidechain
1	A	317[B]	GLN	Mainchain
1	A	432	ARG	Sidechain
1	A	83	ARG	Sidechain

5.2 Too-close contacts [i](#)

In the following table, the Non-H and H(model) columns list the number of non-hydrogen atoms and hydrogen atoms in the chain respectively. The H(added) column lists the number of hydrogen atoms added and optimized by MolProbity. The Clashes column lists the number of clashes within the asymmetric unit, whereas Symm-Clashes lists symmetry-related clashes.

Mol	Chain	Non-H	H(model)	H(added)	Clashes	Symm-Clashes
1	A	3366	0	3166	50	0
2	B	116	0	96	0	0
3	C	28	0	25	5	0
3	D	28	0	25	0	0
4	A	2	0	0	0	0
5	A	30	0	37	16	0
6	A	5	0	0	4	0
7	A	42	0	36	0	0
8	A	1	0	0	0	0
9	A	729	0	0	14	0
All	All	4347	0	3385	59	0

The all-atom clashscore is defined as the number of clashes found per 1000 atoms (including hydrogen atoms). The all-atom clashscore for this structure is 8.

All (59) close contacts within the same asymmetric unit are listed below, sorted by their clash magnitude.

Atom-1	Atom-2	Interatomic distance (Å)	Clash overlap (Å)
5:A:519:GOL:O3	6:A:521:PO4:O2	1.52	1.26
1:A:147:ASN:HD22	3:C:1:NAG:H83	1.00	1.09
1:A:396[B]:THR:HG22	1:A:457[B]:GLN:HE22	1.17	1.08
1:A:396[B]:THR:HG22	1:A:457[B]:GLN:NE2	1.73	1.03

Continued on next page...

Continued from previous page...

Atom-1	Atom-2	Interatomic distance (Å)	Clash overlap (Å)
1:A:108:ARG:HH12	5:A:518:GOL:H31	1.26	0.96
1:A:306[B]:ARG:HH21	1:A:317[B]:GLN:HE22	1.10	0.94
1:A:147:ASN:HD22	3:C:1:NAG:C8	1.82	0.93
1:A:147:ASN:ND2	3:C:1:NAG:H83	1.83	0.92
1:A:169:THR:H	1:A:172:ASN:HD21	1.18	0.91
1:A:88:LEU:H	1:A:235:HIS:HD2	1.20	0.89
1:A:465[A]:LYS:HZ3	1:A:465[A]:LYS:HB3	1.37	0.89
1:A:172:ASN:HB3	9:A:1126:HOH:O	1.74	0.86
1:A:320[B]:CYS:CB	1:A:338:CYS:SG	2.64	0.85
1:A:334[B]:THR:HG22	9:A:623:HOH:O	1.75	0.85
1:A:465[A]:LYS:HB3	1:A:465[A]:LYS:NZ	1.91	0.84
1:A:306[B]:ARG:NH2	1:A:317[B]:GLN:HE22	1.76	0.82
1:A:88:LEU:H	1:A:235:HIS:CD2	2.01	0.78
1:A:396[B]:THR:CG2	1:A:457[B]:GLN:NE2	2.46	0.77
1:A:320[B]:CYS:HB3	1:A:338:CYS:SG	2.26	0.75
5:A:519:GOL:H32	9:A:931:HOH:O	1.85	0.75
1:A:177:CYS:SG	1:A:195[B]:CYS:HB2	2.28	0.74
1:A:359[B]:VAL:CG1	9:A:759:HOH:O	2.36	0.73
1:A:359[B]:VAL:HG12	9:A:759:HOH:O	1.88	0.73
1:A:212[A]:ARG:NH2	9:A:601:HOH:O	2.21	0.73
1:A:98:TRP:H	1:A:395:GLN:HE22	1.37	0.70
9:A:895:HOH:O	3:C:1:NAG:H81	1.91	0.70
1:A:169:THR:H	1:A:172:ASN:ND2	1.92	0.68
1:A:108:ARG:HH12	5:A:518:GOL:C3	2.03	0.67
1:A:467[A]:GLU:HG3	9:A:892:HOH:O	1.95	0.67
1:A:396[B]:THR:HG23	9:A:742:HOH:O	1.95	0.65
1:A:465[A]:LYS:NZ	1:A:465[A]:LYS:CB	2.56	0.65
1:A:172:ASN:HB3	9:A:728:HOH:O	1.96	0.64
5:A:519:GOL:H2	6:A:521:PO4:P	2.39	0.62
1:A:222[A]:ARG:HD3	9:A:614:HOH:O	2.00	0.62
1:A:294:ARG:HE	1:A:296:ASN:HD22	1.49	0.59
1:A:320[B]:CYS:HB2	1:A:338:CYS:SG	2.39	0.58
1:A:152:ASP:H	5:A:519:GOL:C3	2.16	0.58
5:A:519:GOL:H2	6:A:521:PO4:O2	2.01	0.58
1:A:306[B]:ARG:HH21	1:A:317[B]:GLN:NE2	1.93	0.55
5:A:518:GOL:O3	5:A:518:GOL:O1	2.27	0.53
1:A:396[B]:THR:H	1:A:457[B]:GLN:HE22	1.57	0.51
5:A:518:GOL:H11	9:A:607:HOH:O	2.10	0.51
5:A:518:GOL:C1	9:A:607:HOH:O	2.59	0.50
1:A:153:ARG:HH22	5:A:519:GOL:C1	2.25	0.49
1:A:147:ASN:ND2	3:C:1:NAG:C8	2.59	0.49

Continued on next page...

Continued from previous page...

Atom-1	Atom-2	Interatomic distance (Å)	Clash overlap (Å)
1:A:108:ARG:NH1	5:A:518:GOL:H31	2.10	0.48
1:A:122:TYR:CG	1:A:230:SER:HA	2.49	0.47
1:A:294:ARG:HH11	1:A:296:ASN:ND2	2.13	0.47
1:A:465[A]:LYS:CB	1:A:465[A]:LYS:HZ2	2.27	0.47
1:A:152:ASP:H	5:A:519:GOL:H31	1.79	0.46
1:A:396[B]:THR:H	1:A:457[B]:GLN:NE2	2.13	0.45
1:A:222[A]:ARG:NH2	9:A:614:HOH:O	2.48	0.44
5:A:519:GOL:H2	6:A:521:PO4:O1	2.19	0.43
1:A:335[A]:VAL:HA	1:A:387:ASP:O	2.19	0.43
1:A:320[B]:CYS:HB3	1:A:338:CYS:HA	2.01	0.42
1:A:294:ARG:HH11	1:A:296:ASN:HD21	1.68	0.42
1:A:153:ARG:HH12	5:A:519:GOL:H12	1.85	0.41
1:A:396[B]:THR:CG2	1:A:457[B]:GLN:HE21	2.29	0.41
1:A:153:ARG:HH22	5:A:519:GOL:H12	1.85	0.41

There are no symmetry-related clashes.

5.3 Torsion angles [i](#)

5.3.1 Protein backbone [i](#)

In the following table, the Percentiles column shows the percent Ramachandran outliers of the chain as a percentile score with respect to all X-ray entries followed by that with respect to entries of similar resolution.

The Analysed column shows the number of residues for which the backbone conformation was analysed, and the total number of residues.

Mol	Chain	Analysed	Favoured	Allowed	Outliers	Percentiles
1	A	424/388 (109%)	408 (96%)	16 (4%)	0	100 100

There are no Ramachandran outliers to report.

5.3.2 Protein sidechains [i](#)

In the following table, the Percentiles column shows the percent sidechain outliers of the chain as a percentile score with respect to all X-ray entries followed by that with respect to entries of similar resolution.

The Analysed column shows the number of residues for which the sidechain conformation was analysed, and the total number of residues.

Mol	Chain	Analysed	Rotameric	Outliers	Percentiles
1	A	379/341 (111%)	371 (98%)	8 (2%)	53 16

All (8) residues with a non-rotameric sidechain are listed below:

Mol	Chain	Res	Type
1	A	172	ASN
1	A	223[A]	ASN
1	A	223[B]	ASN
1	A	306[A]	ARG
1	A	306[B]	ARG
1	A	306[C]	ARG
1	A	465[A]	LYS
1	A	465[B]	LYS

Sometimes sidechains can be flipped to improve hydrogen bonding and reduce clashes. All (6) such sidechains are listed below:

Mol	Chain	Res	Type
1	A	172	ASN
1	A	235	HIS
1	A	296	ASN
1	A	347	ASN
1	A	395	GLN
1	A	400	ASN

5.3.3 RNA [i](#)

There are no RNA molecules in this entry.

5.4 Non-standard residues in protein, DNA, RNA chains [i](#)

There are no non-standard protein/DNA/RNA residues in this entry.

5.5 Carbohydrates [i](#)

14 monosaccharides are modelled in this entry.

In the following table, the Counts columns list the number of bonds (or angles) for which Mogul statistics could be retrieved, the number of bonds (or angles) that are observed in the model and the number of bonds (or angles) that are defined in the Chemical Component Dictionary. The Link column lists molecule types, if any, to which the group is linked. The Z score for a bond

length (or angle) is the number of standard deviations the observed value is removed from the expected value. A bond length (or angle) with $|Z| > 2$ is considered an outlier worth inspection. RMSZ is the root-mean-square of all Z scores of the bond lengths (or angles).

Mol	Type	Chain	Res	Link	Bond lengths			Bond angles		
					Counts	RMSZ	# Z > 2	Counts	RMSZ	# Z > 2
2	NAG	B	1	8,1,2	14,14,15	0.65	0	17,19,21	1.21	1 (5%)
2	MAN	B	10	8,2	11,11,12	1.37	2 (18%)	15,15,17	1.17	1 (6%)
2	NAG	B	2	8,2	14,14,15	0.99	1 (7%)	17,19,21	1.03	1 (5%)
2	BMA	B	3	2	11,11,12	0.61	0	15,15,17	0.65	0
2	MAN	B	4	2	11,11,12	0.94	1 (9%)	15,15,17	1.87	3 (20%)
2	MAN	B	5	2	11,11,12	1.13	1 (9%)	15,15,17	0.82	0
2	MAN	B	6	2	11,11,12	1.01	1 (9%)	15,15,17	1.12	1 (6%)
2	MAN	B	7	2	11,11,12	1.12	2 (18%)	15,15,17	1.13	1 (6%)
2	MAN	B	8	2	11,11,12	1.53	2 (18%)	15,15,17	2.83	3 (20%)
2	MAN	B	9	2	11,11,12	1.33	1 (9%)	15,15,17	1.76	3 (20%)
3	NAG	C	1	3,1	14,14,15	2.07	5 (35%)	17,19,21	2.38	9 (52%)
3	NAG	C	2	3	14,14,15	0.95	1 (7%)	17,19,21	2.13	5 (29%)
3	NAG	D	1	3,1	14,14,15	1.02	0	17,19,21	1.46	3 (17%)
3	NAG	D	2	3	14,14,15	1.57	3 (21%)	17,19,21	2.83	8 (47%)

In the following table, the Chirals column lists the number of chiral outliers, the number of chiral centers analysed, the number of these observed in the model and the number defined in the Chemical Component Dictionary. Similar counts are reported in the Torsion and Rings columns. '-' means no outliers of that kind were identified.

Mol	Type	Chain	Res	Link	Chirals	Torsions	Rings
2	NAG	B	1	8,1,2	-	0/6/23/26	0/1/1/1
2	MAN	B	10	8,2	-	0/2/19/22	0/1/1/1
2	NAG	B	2	8,2	-	0/6/23/26	0/1/1/1
2	BMA	B	3	2	-	0/2/19/22	0/1/1/1
2	MAN	B	4	2	-	0/2/19/22	0/1/1/1
2	MAN	B	5	2	-	0/2/19/22	0/1/1/1
2	MAN	B	6	2	-	0/2/19/22	0/1/1/1
2	MAN	B	7	2	-	0/2/19/22	0/1/1/1
2	MAN	B	8	2	-	2/2/19/22	0/1/1/1
2	MAN	B	9	2	-	0/2/19/22	0/1/1/1
3	NAG	C	1	3,1	-	2/6/23/26	0/1/1/1
3	NAG	C	2	3	-	2/6/23/26	0/1/1/1
3	NAG	D	1	3,1	-	0/6/23/26	0/1/1/1
3	NAG	D	2	3	-	1/6/23/26	0/1/1/1

All (20) bond length outliers are listed below:

Mol	Chain	Res	Type	Atoms	Z	Observed(Å)	Ideal(Å)
3	C	1	NAG	C8-C7	5.23	1.61	1.50
3	D	2	NAG	O7-C7	3.41	1.31	1.23
2	B	9	MAN	O6-C6	3.39	1.56	1.42
2	B	8	MAN	O6-C6	3.18	1.55	1.42
2	B	10	MAN	O5-C1	-2.81	1.39	1.43
3	C	2	NAG	C8-C7	2.74	1.56	1.50
3	D	2	NAG	O5-C5	2.69	1.48	1.43
3	D	2	NAG	O4-C4	2.57	1.49	1.43
2	B	8	MAN	C4-C3	2.57	1.58	1.52
3	C	1	NAG	C4-C3	-2.53	1.45	1.52
3	C	1	NAG	O4-C4	2.52	1.48	1.43
2	B	6	MAN	C2-C3	2.44	1.56	1.52
2	B	4	MAN	C2-C3	-2.43	1.48	1.52
2	B	7	MAN	O5-C5	-2.43	1.38	1.43
2	B	7	MAN	O5-C1	-2.42	1.39	1.43
3	C	1	NAG	C1-C2	-2.19	1.49	1.52
2	B	5	MAN	O5-C1	-2.18	1.40	1.43
2	B	2	NAG	C1-C2	2.15	1.55	1.52
2	B	10	MAN	O6-C6	2.12	1.51	1.42
3	C	1	NAG	O5-C1	-2.11	1.40	1.43

All (39) bond angle outliers are listed below:

Mol	Chain	Res	Type	Atoms	Z	Observed(°)	Ideal(°)
2	B	8	MAN	C1-O5-C5	7.49	122.34	112.19
2	B	8	MAN	C1-C2-C3	-6.15	102.11	109.67
3	D	2	NAG	O5-C5-C6	-6.11	97.62	107.20
2	B	4	MAN	O2-C2-C1	-4.98	98.97	109.15
3	C	1	NAG	C6-C5-C4	4.81	124.28	113.00
3	C	2	NAG	C2-N2-C7	-4.50	116.50	122.90
3	D	2	NAG	O6-C6-C5	-4.46	96.01	111.29
3	C	2	NAG	O3-C3-C2	-4.34	100.48	109.47
3	C	2	NAG	O5-C5-C6	-4.16	100.68	107.20
3	C	1	NAG	O7-C7-N2	-3.92	114.74	121.95
3	D	2	NAG	C6-C5-C4	3.91	122.17	113.00
3	D	2	NAG	C3-C4-C5	-3.78	103.50	110.24
3	D	2	NAG	C1-O5-C5	-3.53	107.41	112.19
3	D	2	NAG	O4-C4-C5	3.46	117.89	109.30
2	B	8	MAN	O5-C5-C4	-3.34	102.69	110.83
2	B	2	NAG	O5-C1-C2	-3.30	106.08	111.29
3	D	1	NAG	O5-C1-C2	-3.19	106.25	111.29
2	B	9	MAN	O2-C2-C3	3.16	116.46	110.14

Continued on next page...

Continued from previous page...

Mol	Chain	Res	Type	Atoms	Z	Observed(°)	Ideal(°)
2	B	9	MAN	C1-C2-C3	-3.15	105.79	109.67
3	C	1	NAG	O7-C7-C8	3.11	127.83	122.06
3	C	1	NAG	C2-N2-C7	-3.02	118.60	122.90
2	B	6	MAN	C1-O5-C5	2.99	116.24	112.19
2	B	4	MAN	O2-C2-C3	2.92	116.00	110.14
3	C	1	NAG	O3-C3-C4	-2.92	103.60	110.35
3	C	1	NAG	O5-C5-C6	-2.90	102.66	107.20
2	B	10	MAN	C1-O5-C5	2.81	116.00	112.19
3	D	2	NAG	C8-C7-N2	-2.81	111.35	116.10
2	B	7	MAN	C1-O5-C5	2.77	115.94	112.19
2	B	9	MAN	C1-O5-C5	2.72	115.87	112.19
3	D	1	NAG	O4-C4-C5	-2.66	102.69	109.30
2	B	4	MAN	C1-O5-C5	2.55	115.64	112.19
3	C	1	NAG	O6-C6-C5	-2.50	102.70	111.29
3	C	1	NAG	O4-C4-C3	-2.43	104.73	110.35
3	D	2	NAG	O7-C7-N2	2.39	126.36	121.95
3	C	2	NAG	O7-C7-C8	-2.28	117.83	122.06
3	C	1	NAG	C3-C4-C5	2.16	114.10	110.24
3	D	1	NAG	C6-C5-C4	2.15	118.04	113.00
3	C	2	NAG	O5-C1-C2	-2.07	108.01	111.29
2	B	1	NAG	O5-C5-C4	-2.03	105.89	110.83

There are no chirality outliers.

All (7) torsion outliers are listed below:

Mol	Chain	Res	Type	Atoms
3	C	1	NAG	C8-C7-N2-C2
3	C	1	NAG	O7-C7-N2-C2
3	C	2	NAG	O5-C5-C6-O6
3	C	2	NAG	C4-C5-C6-O6
2	B	8	MAN	C4-C5-C6-O6
2	B	8	MAN	O5-C5-C6-O6
3	D	2	NAG	C4-C5-C6-O6

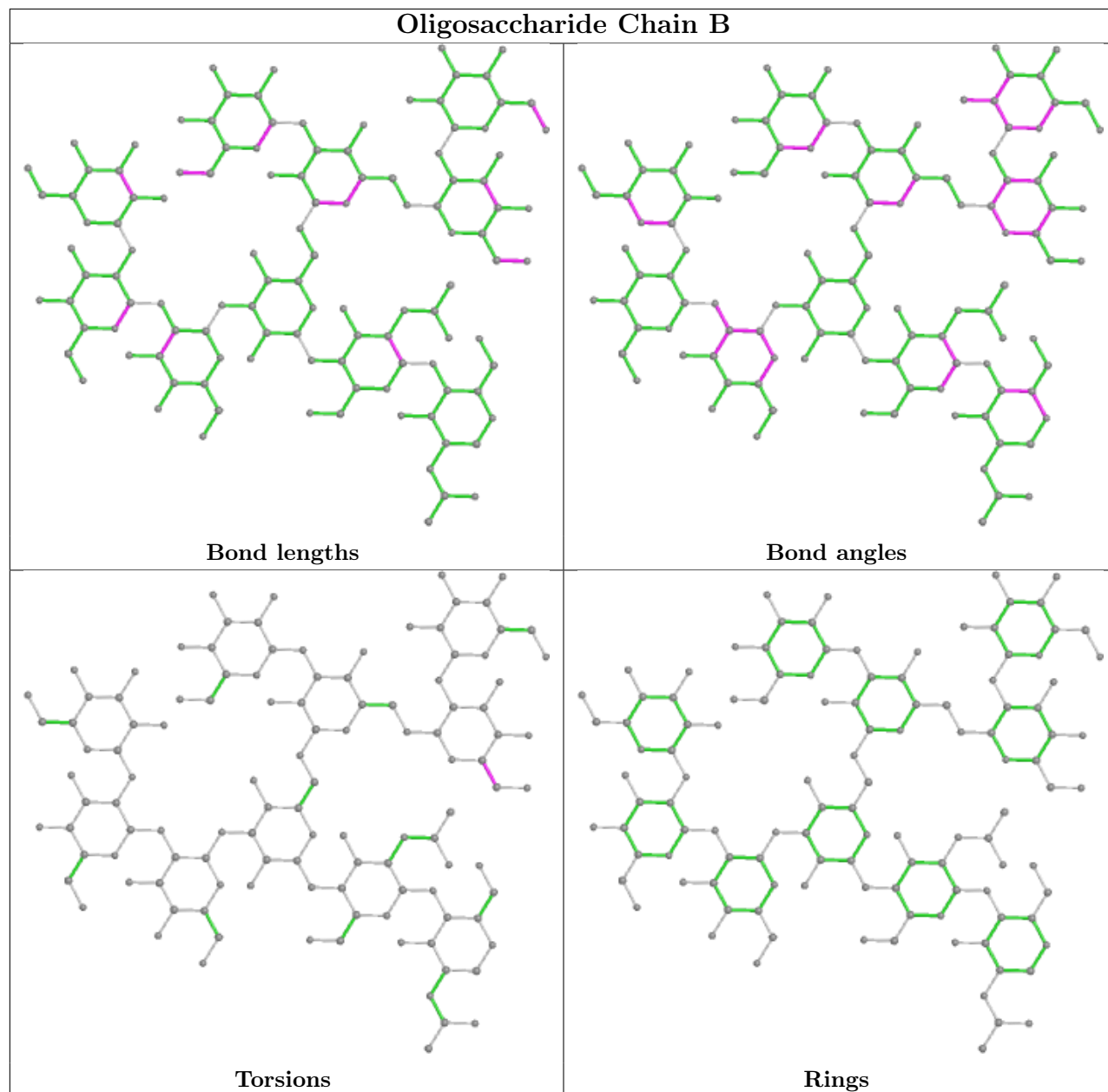
There are no ring outliers.

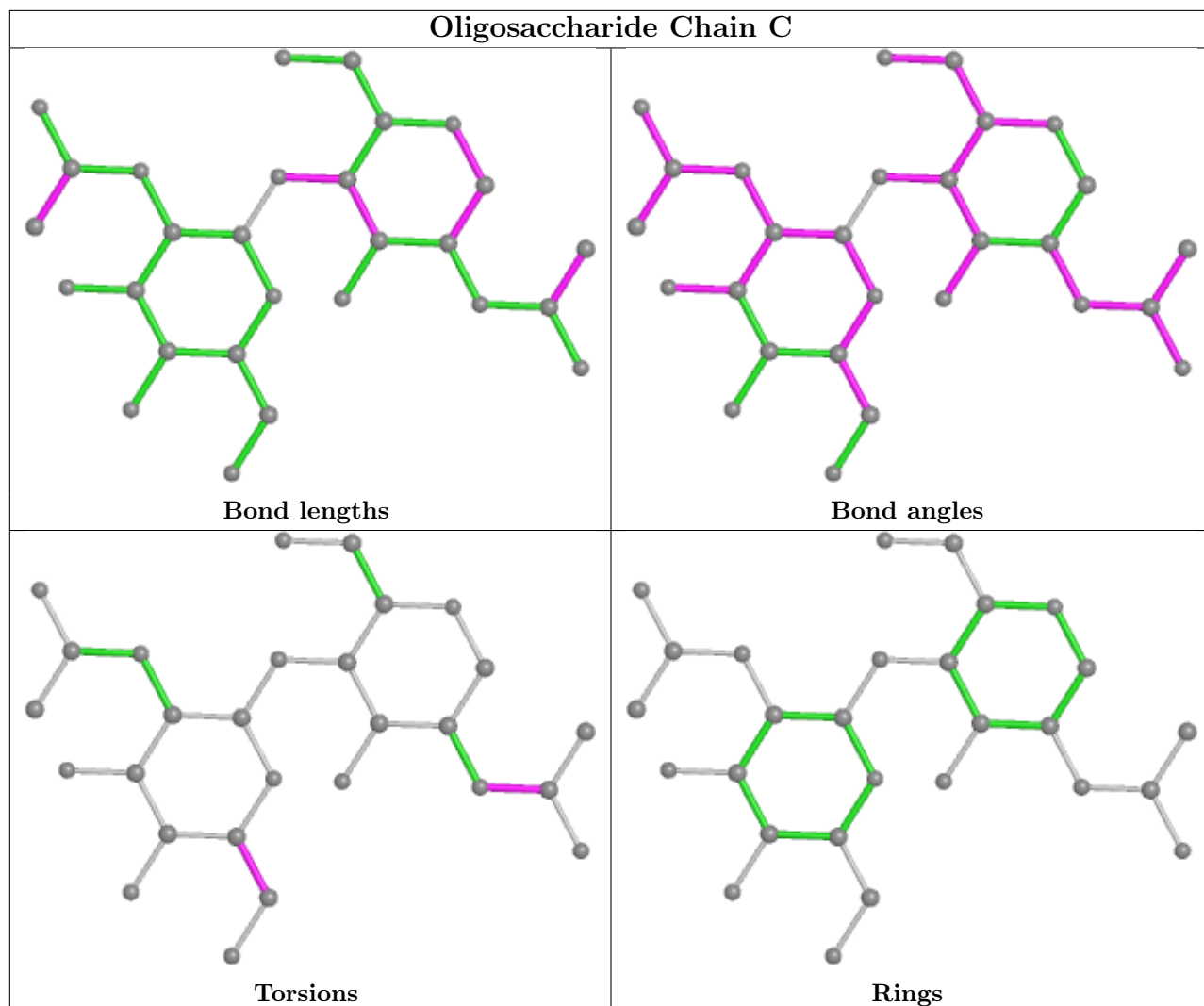
1 monomer is involved in 5 short contacts:

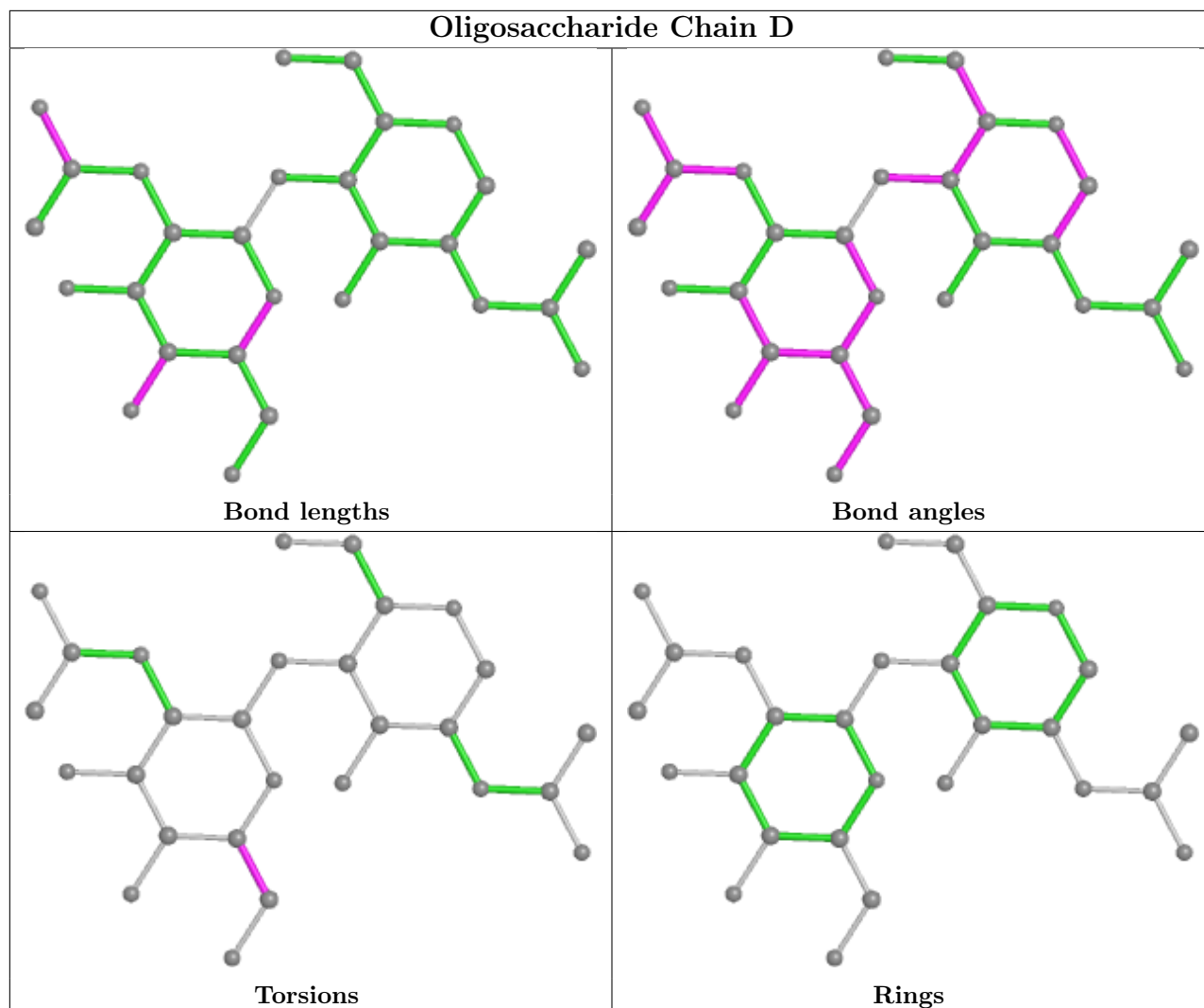
Mol	Chain	Res	Type	Clashes	Symm-Clashes
3	C	1	NAG	5	0

The following is a two-dimensional graphical depiction of Mogul quality analysis of bond lengths,

bond angles, torsion angles, and ring geometry for oligosaccharide.







5.6 Ligand geometry [i](#)

Of 11 ligands modelled in this entry, 3 are monoatomic - leaving 8 for Mogul analysis.

In the following table, the Counts columns list the number of bonds (or angles) for which Mogul statistics could be retrieved, the number of bonds (or angles) that are observed in the model and the number of bonds (or angles) that are defined in the Chemical Component Dictionary. The Link column lists molecule types, if any, to which the group is linked. The Z score for a bond length (or angle) is the number of standard deviations the observed value is removed from the expected value. A bond length (or angle) with $|Z| > 2$ is considered an outlier worth inspection. RMSZ is the root-mean-square of all Z scores of the bond lengths (or angles).

Mol	Type	Chain	Res	Link	Bond lengths			Bond angles		
					Counts	RMSZ	$\# Z > 2$	Counts	RMSZ	$\# Z > 2$
5	GOL	A	517[A]	-	5,5,5	1.24	1 (20%)	5,5,5	1.40	1 (20%)
7	SIA	A	523	-	21,21,21	1.45	2 (9%)	25,31,31	1.30	3 (12%)
5	GOL	A	520	-	5,5,5	0.54	0	5,5,5	1.00	0

Mol	Type	Chain	Res	Link	Bond lengths			Bond angles		
					Counts	RMSZ	# Z > 2	Counts	RMSZ	# Z > 2
5	GOL	A	517[B]	-	5,5,5	0.60	0	5,5,5	0.53	0
5	GOL	A	518	-	5,5,5	1.10	0	5,5,5	2.00	2 (40%)
7	SIA	A	522	-	21,21,21	3.36	6 (28%)	25,31,31	1.89	4 (16%)
5	GOL	A	519	-	5,5,5	1.10	0	5,5,5	1.71	1 (20%)
6	PO4	A	521	-	4,4,4	1.50	1 (25%)	6,6,6	0.87	0

In the following table, the Chirals column lists the number of chiral outliers, the number of chiral centers analysed, the number of these observed in the model and the number defined in the Chemical Component Dictionary. Similar counts are reported in the Torsion and Rings columns. '-' means no outliers of that kind were identified.

Mol	Type	Chain	Res	Link	Chirals	Torsions	Rings
5	GOL	A	517[A]	-	-	0/4/4/4	-
7	SIA	A	523	-	-	3/20/38/38	0/1/1/1
5	GOL	A	520	-	-	0/4/4/4	-
5	GOL	A	517[B]	-	-	0/4/4/4	-
5	GOL	A	518	-	-	1/4/4/4	-
7	SIA	A	522	-	-	2/20/38/38	0/1/1/1
5	GOL	A	519	-	-	2/4/4/4	-

All (10) bond length outliers are listed below:

Mol	Chain	Res	Type	Atoms	Z	Observed(Å)	Ideal(Å)
7	A	522	SIA	O6-C2	-9.97	1.32	1.43
7	A	522	SIA	O2-C2	9.55	1.52	1.39
7	A	523	SIA	C4-C5	-4.30	1.49	1.53
7	A	522	SIA	C4-C5	-4.28	1.49	1.53
7	A	522	SIA	C6-C5	2.90	1.57	1.53
5	A	517[A]	GOL	O2-C2	2.53	1.50	1.43
6	A	521	PO4	P-O3	-2.50	1.47	1.54
7	A	523	SIA	O1A-C1	2.27	1.29	1.22
7	A	522	SIA	O6-C6	2.17	1.47	1.44
7	A	522	SIA	O1A-C1	2.10	1.28	1.22

All (11) bond angle outliers are listed below:

Mol	Chain	Res	Type	Atoms	Z	Observed(°)	Ideal(°)
7	A	522	SIA	O1A-C1-C2	-5.59	115.12	123.59
7	A	522	SIA	O2-C2-C1	-4.74	101.11	110.76
7	A	522	SIA	O2-C2-O6	-3.83	99.69	109.42

Continued on next page...

Continued from previous page...

Mol	Chain	Res	Type	Atoms	Z	Observed(°)	Ideal(°)
5	A	519	GOL	O3-C3-C2	-3.68	92.56	110.20
5	A	518	GOL	O2-C2-C1	-2.88	96.42	109.12
5	A	518	GOL	O3-C3-C2	-2.84	96.58	110.20
7	A	523	SIA	O6-C6-C7	-2.65	103.21	107.29
5	A	517[A]	GOL	O2-C2-C3	-2.56	97.85	109.12
7	A	522	SIA	C6-C5-N5	-2.18	107.29	110.91
7	A	523	SIA	O2-C2-C1	-2.17	106.35	110.76
7	A	523	SIA	O6-C6-C5	2.13	111.86	109.78

There are no chirality outliers.

All (8) torsion outliers are listed below:

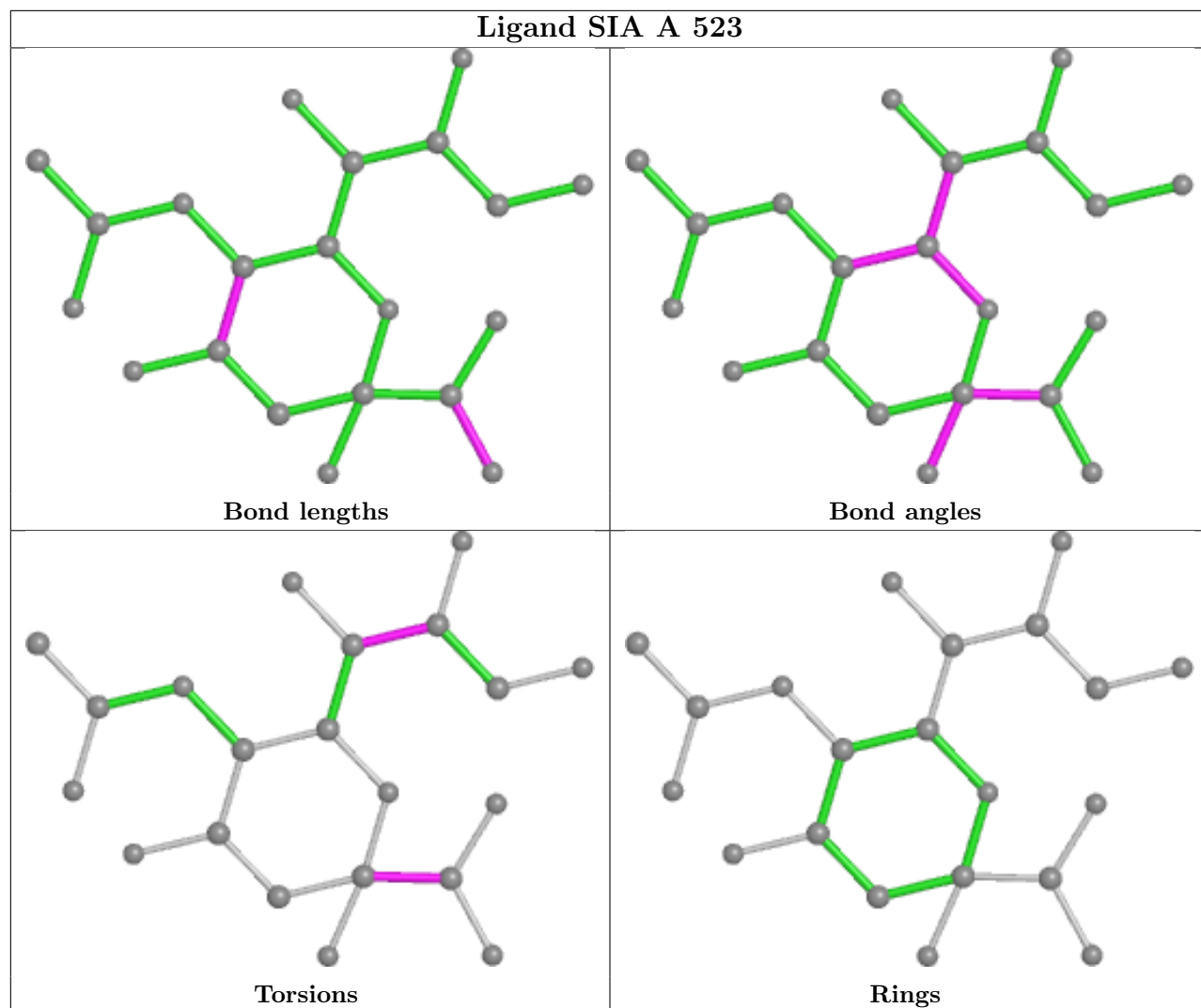
Mol	Chain	Res	Type	Atoms
5	A	519	GOL	C1-C2-C3-O3
5	A	518	GOL	O1-C1-C2-O2
5	A	519	GOL	O2-C2-C3-O3
7	A	522	SIA	O1A-C1-C2-C3
7	A	523	SIA	C6-C7-C8-O8
7	A	523	SIA	O1A-C1-C2-O6
7	A	522	SIA	O1A-C1-C2-O2
7	A	523	SIA	O1B-C1-C2-O6

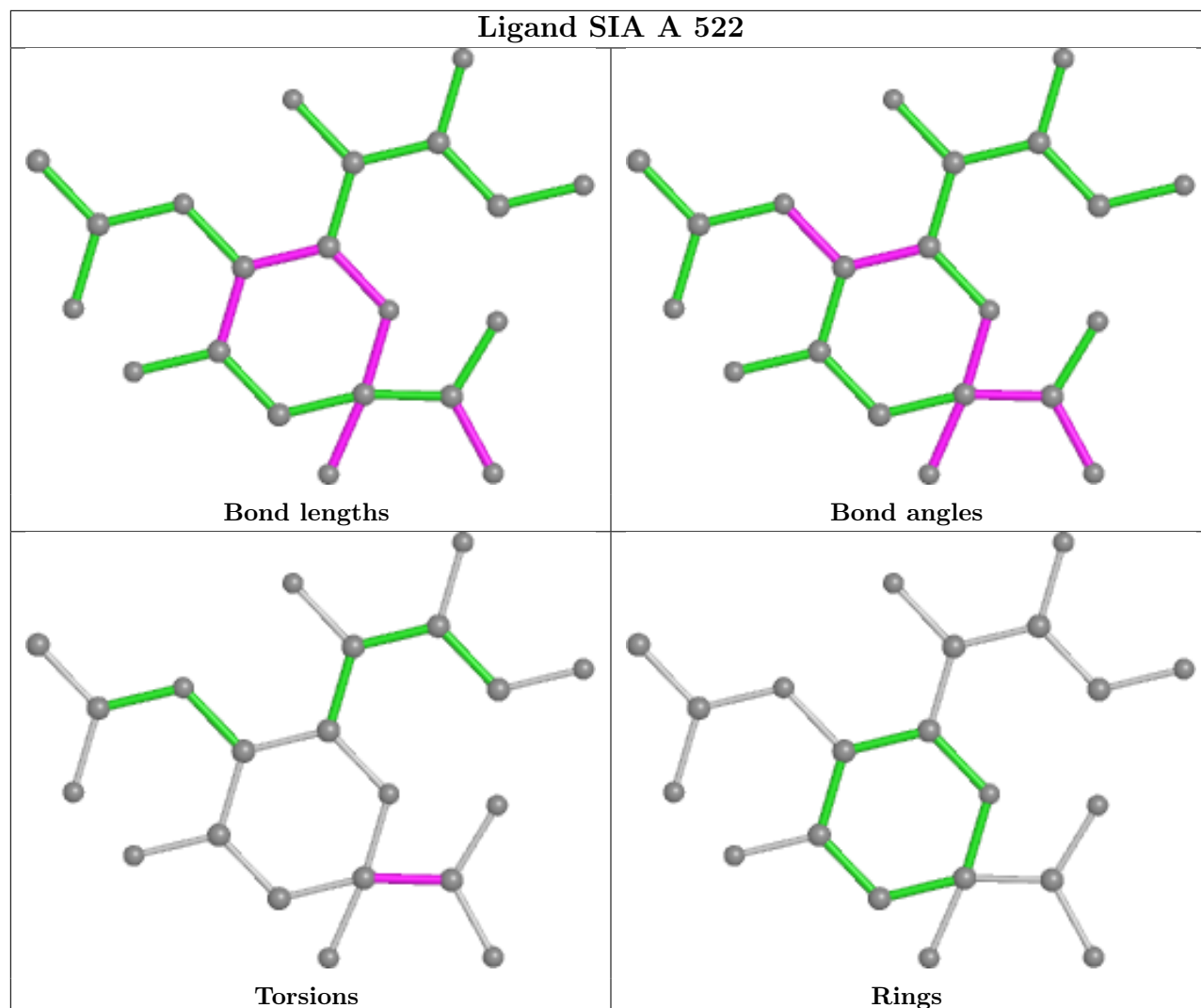
There are no ring outliers.

3 monomers are involved in 16 short contacts:

Mol	Chain	Res	Type	Clashes	Symm-Clashes
5	A	518	GOL	6	0
5	A	519	GOL	10	0
6	A	521	PO4	4	0

The following is a two-dimensional graphical depiction of Mogul quality analysis of bond lengths, bond angles, torsion angles, and ring geometry for all instances of the Ligand of Interest. In addition, ligands with molecular weight > 250 and outliers as shown on the validation Tables will also be included. For torsion angles, if less than 5% of the Mogul distribution of torsion angles is within 10 degrees of the torsion angle in question, then that torsion angle is considered an outlier. Any bond that is central to one or more torsion angles identified as an outlier by Mogul will be highlighted in the graph. For rings, the root-mean-square deviation (RMSD) between the ring in question and similar rings identified by Mogul is calculated over all ring torsion angles. If the average RMSD is greater than 60 degrees and the minimal RMSD between the ring in question and any Mogul-identified rings is also greater than 60 degrees, then that ring is considered an outlier. The outliers are highlighted in purple. The color gray indicates Mogul did not find sufficient equivalents in the CSD to analyse the geometry.





5.7 Other polymers [i](#)

There are no such residues in this entry.

5.8 Polymer linkage issues [i](#)

There are no chain breaks in this entry.

6 Fit of model and data [i](#)

6.1 Protein, DNA and RNA chains [i](#)

In the following table, the column labelled ‘#RSRZ> 2’ contains the number (and percentage) of RSRZ outliers, followed by percent RSRZ outliers for the chain as percentile scores relative to all X-ray entries and entries of similar resolution. The OWAB column contains the minimum, median, 95th percentile and maximum values of the occupancy-weighted average B-factor per residue. The column labelled ‘Q< 0.9’ lists the number of (and percentage) of residues with an average occupancy less than 0.9.

Mol	Chain	Analysed	<RSRZ>	#RSRZ>2	OWAB(Å ²)	Q<0.9
1	A	388/388 (100%)	-0.75	0 100 100	7, 10, 17, 43	0

There are no RSRZ outliers to report.

6.2 Non-standard residues in protein, DNA, RNA chains [i](#)

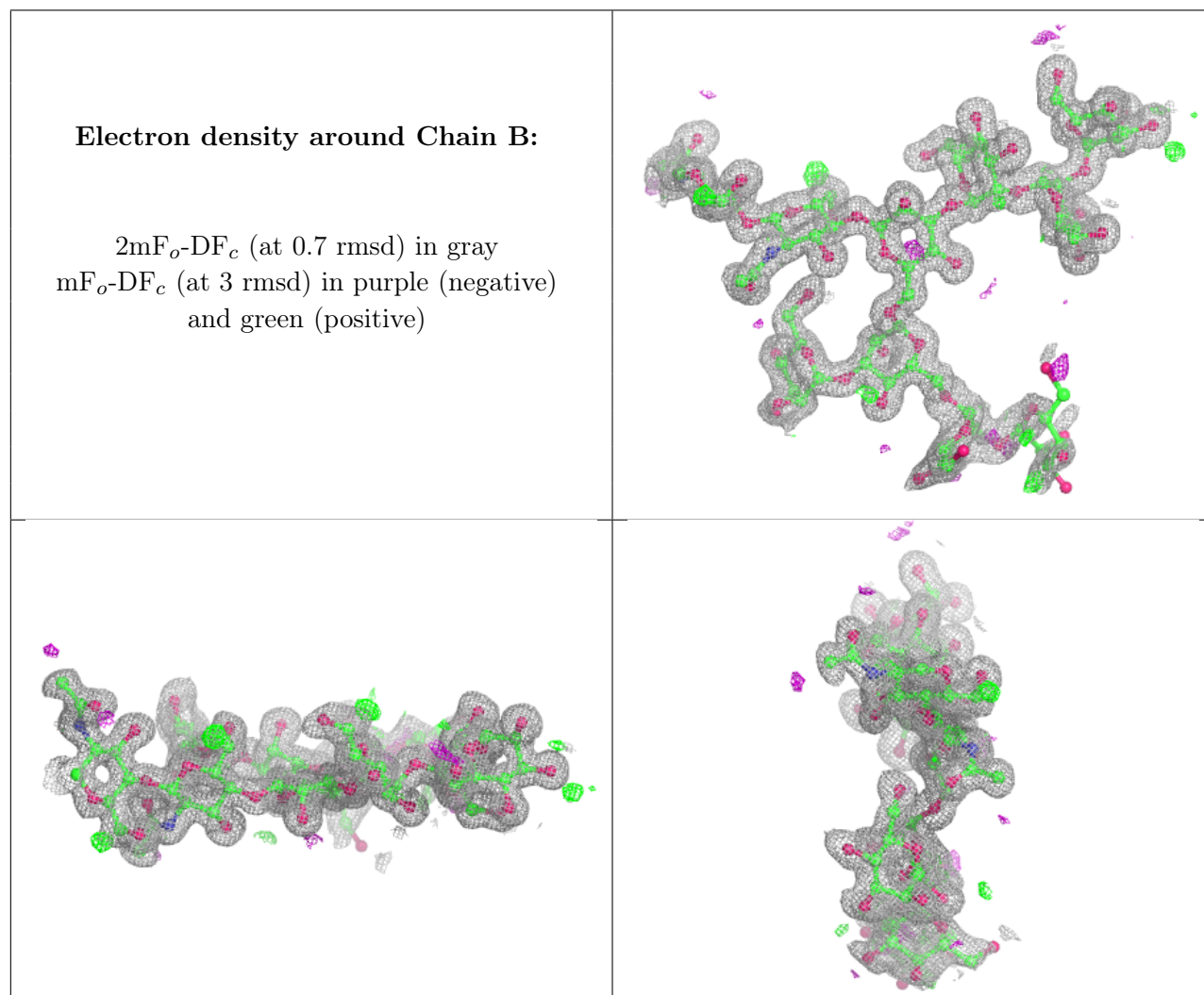
There are no non-standard protein/DNA/RNA residues in this entry.

6.3 Carbohydrates [i](#)

In the following table, the Atoms column lists the number of modelled atoms in the group and the number defined in the chemical component dictionary. The B-factors column lists the minimum, median, 95th percentile and maximum values of B factors of atoms in the group. The column labelled ‘Q< 0.9’ lists the number of atoms with occupancy less than 0.9.

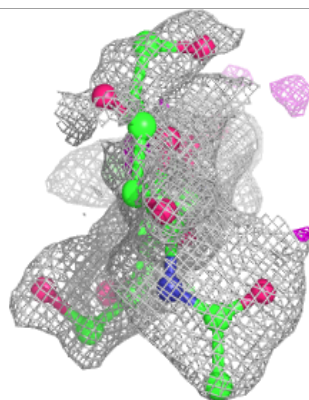
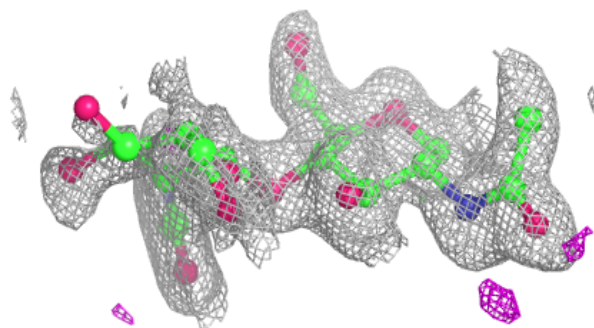
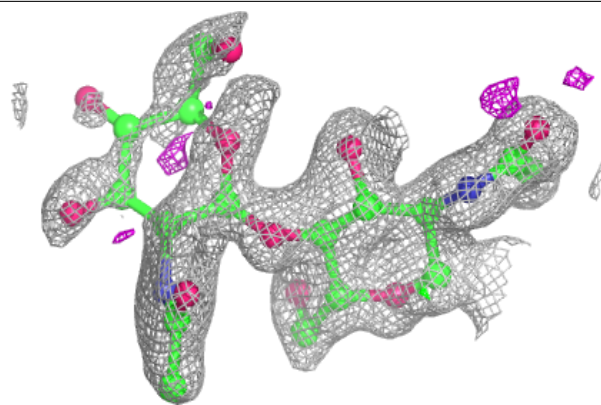
Mol	Type	Chain	Res	Atoms	RSCC	RSR	B-factors(Å ²)	Q<0.9
2	MAN	B	9	11/12	0.71	0.18	63,79,88,122	0
2	MAN	B	8	11/12	0.88	0.16	37,44,51,87	0
3	NAG	C	2	14/15	0.90	0.23	43,60,81,102	0
3	NAG	C	1	14/15	0.93	0.12	20,31,45,46	0
3	NAG	D	2	14/15	0.93	0.24	29,42,54,56	0
2	MAN	B	10	11/12	0.95	0.09	24,28,41,43	0
3	NAG	D	1	14/15	0.97	0.11	12,19,28,30	0
2	MAN	B	7	11/12	0.97	0.07	15,18,22,29	0
2	BMA	B	3	11/12	0.98	0.05	10,11,13,16	0
2	MAN	B	4	11/12	0.98	0.06	11,13,20,28	0
2	MAN	B	5	11/12	0.98	0.05	12,13,17,18	0
2	MAN	B	6	11/12	0.98	0.05	11,11,13,14	0
2	NAG	B	1	14/15	0.98	0.06	9,11,22,23	0
2	NAG	B	2	14/15	0.98	0.05	9,11,15,21	0

The following is a graphical depiction of the model fit to experimental electron density for oligosaccharide. Each fit is shown from different orientation to approximate a three-dimensional view.

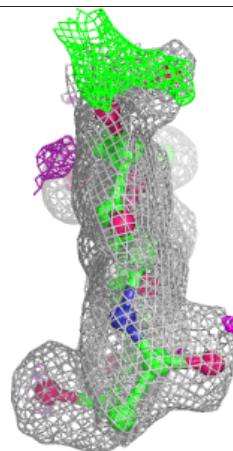
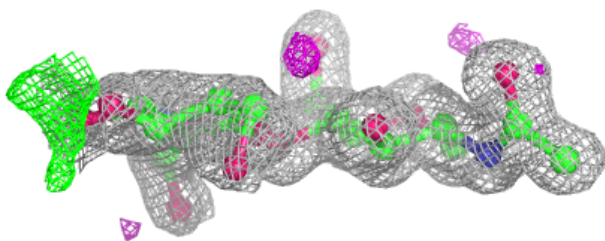
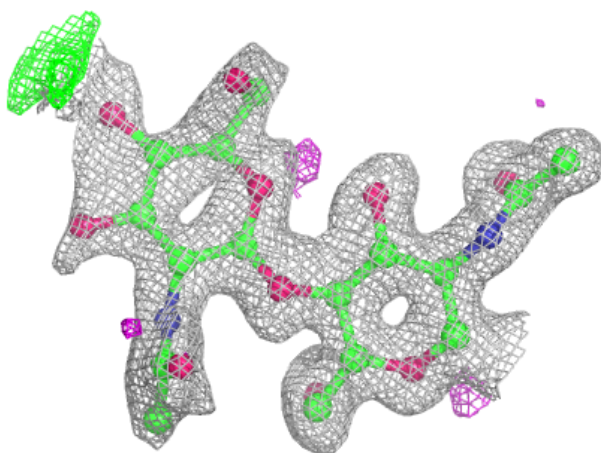


Electron density around Chain C:

$2mF_o-DF_c$ (at 0.7 rmsd) in gray
 mF_o-DF_c (at 3 rmsd) in purple (negative)
and green (positive)

**Electron density around Chain D:**

$2mF_o-DF_c$ (at 0.7 rmsd) in gray
 mF_o-DF_c (at 3 rmsd) in purple (negative)
and green (positive)



6.4 Ligands

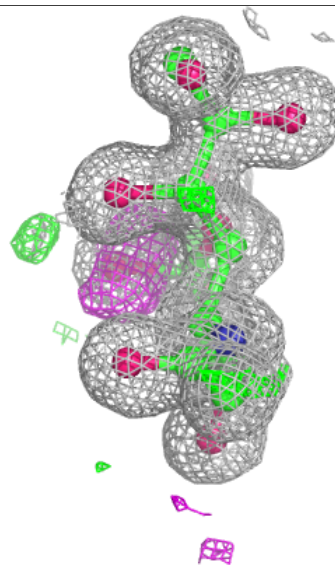
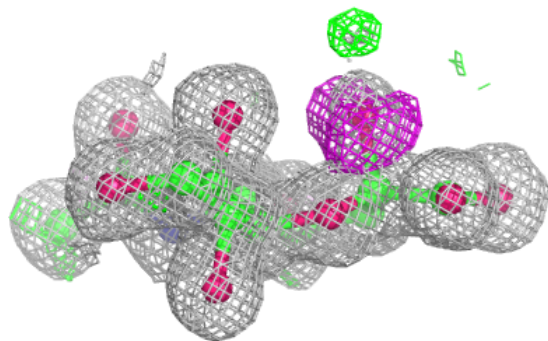
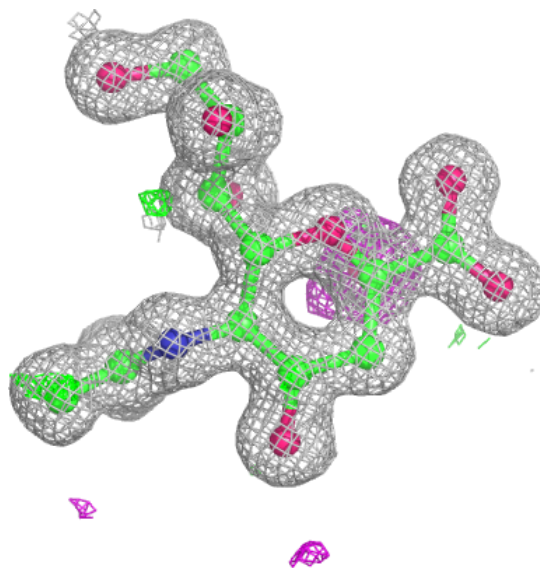
In the following table, the Atoms column lists the number of modelled atoms in the group and the number defined in the chemical component dictionary. The B-factors column lists the minimum, median, 95th percentile and maximum values of B factors of atoms in the group. The column labelled 'Q<0.9' lists the number of atoms with occupancy less than 0.9.

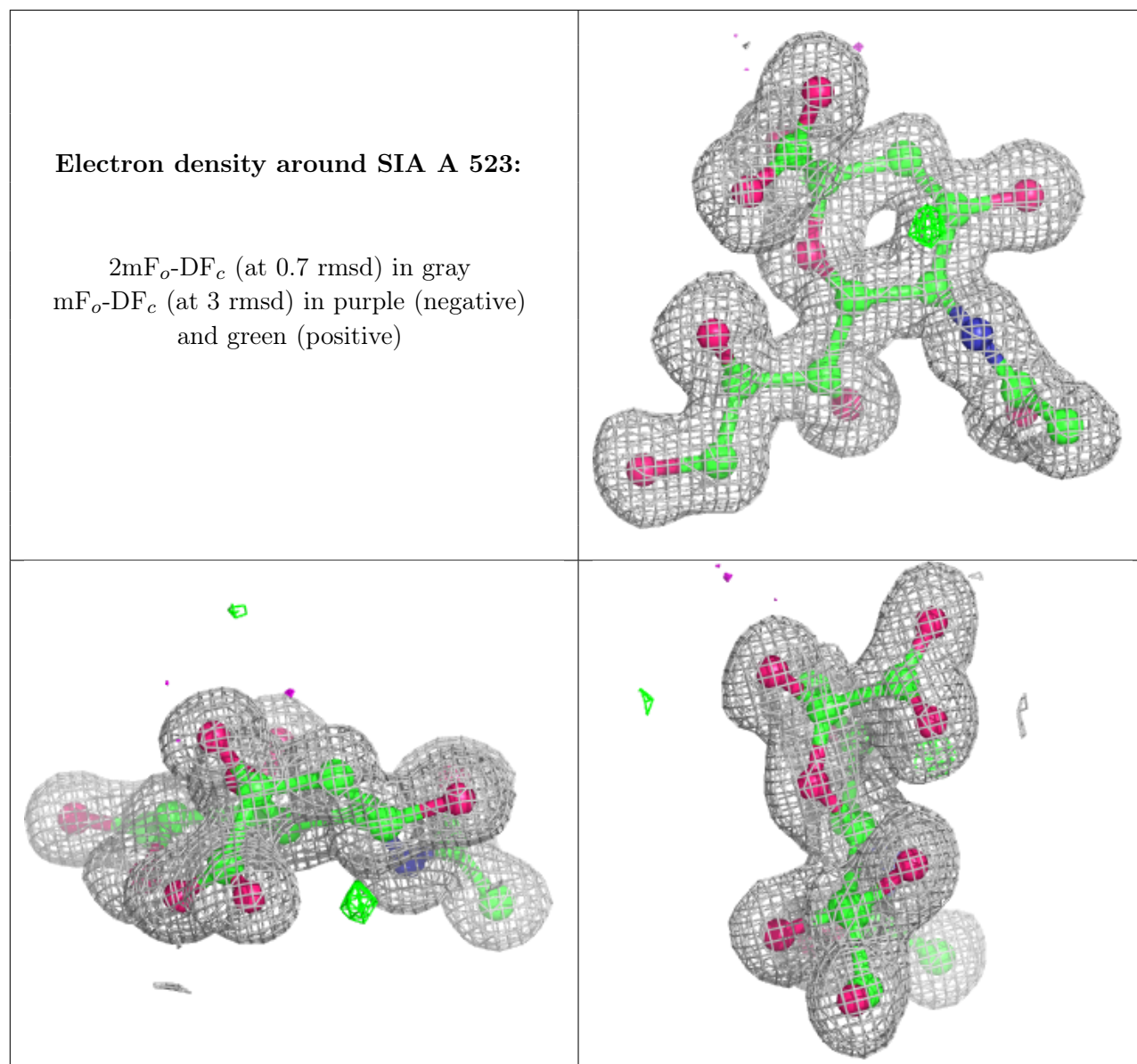
Mol	Type	Chain	Res	Atoms	RSCC	RSR	B-factors(Å ²)	Q<0.9
5	GOL	A	518	6/6	0.68	0.18	47,53,71,72	0
5	GOL	A	517[B]	6/6	0.94	0.10	1,1,1,2	6
5	GOL	A	517[A]	6/6	0.94	0.10	15,23,28,32	0
5	GOL	A	519	6/6	0.94	0.18	12,25,42,53	6
4	CA	A	515	1/1	0.95	0.06	29,29,29,29	1
6	PO4	A	521	5/5	0.96	0.12	19,20,28,29	5
5	GOL	A	520	6/6	0.97	0.12	22,29,39,43	0
7	SIA	A	522	21/21	0.97	0.05	9,11,12,20	0
7	SIA	A	523	21/21	0.97	0.12	13,16,19,23	0
4	CA	A	516	1/1	1.00	0.02	11,11,11,11	0
8	K	A	524	1/1	1.00	0.03	23,23,23,23	1

The following is a graphical depiction of the model fit to experimental electron density of all instances of the Ligand of Interest. In addition, ligands with molecular weight > 250 and outliers as shown on the geometry validation Tables will also be included. Each fit is shown from different orientation to approximate a three-dimensional view.

Electron density around SIA A 522:

$2mF_o-DF_c$ (at 0.7 rmsd) in gray
 mF_o-DF_c (at 3 rmsd) in purple (negative)
and green (positive)





6.5 Other polymers [\(i\)](#)

There are no such residues in this entry.