



Full wwPDB X-ray Structure Validation Report ⓘ

Nov 1, 2023 – 12:39 PM JST

PDB ID : 5HGQ
Title : Loa loa Lysyl-tRNA synthetase in complex with Cladosporin.
Authors : Sharma, A.; Sharma, M.; Yogavel, M.; Sharma, A.
Deposited on : 2016-01-08
Resolution : 3.28 Å(reported)

This is a Full wwPDB X-ray Structure Validation Report for a publicly released PDB entry.

We welcome your comments at validation@mail.wwpdb.org

A user guide is available at

<https://www.wwpdb.org/validation/2017/XrayValidationReportHelp>

with specific help available everywhere you see the ⓘ symbol.

The types of validation reports are described at

<http://www.wwpdb.org/validation/2017/FAQs#types>.

The following versions of software and data (see [references ⓘ](#)) were used in the production of this report:

MolProbity : 4.02b-467
Mogul : 1.8.5 (274361), CSD as541be (2020)
Xtriage (Phenix) : 1.13
EDS : 2.36
buster-report : 1.1.7 (2018)
Percentile statistics : 20191225.v01 (using entries in the PDB archive December 25th 2019)
Refmac : 5.8.0158
CCP4 : 7.0.044 (Gargrove)
Ideal geometry (proteins) : Engh & Huber (2001)
Ideal geometry (DNA, RNA) : Parkinson et al. (1996)
Validation Pipeline (wwPDB-VP) : 2.36

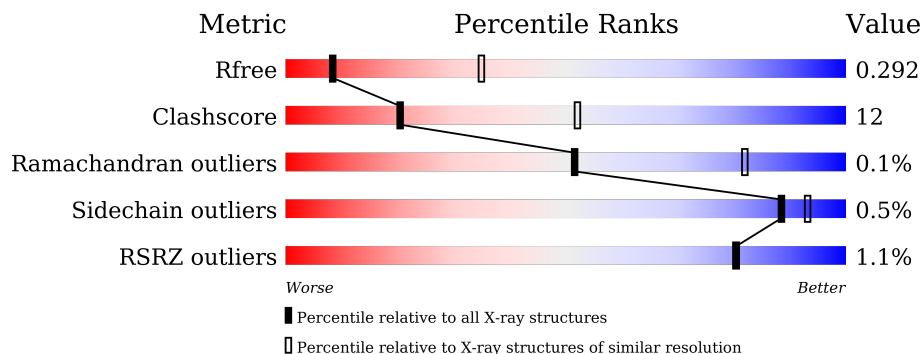
1 Overall quality at a glance

The following experimental techniques were used to determine the structure:

X-RAY DIFFRACTION

The reported resolution of this entry is 3.28 Å.

Percentile scores (ranging between 0-100) for global validation metrics of the entry are shown in the following graphic. The table shows the number of entries on which the scores are based.



Metric	Whole archive (#Entries)	Similar resolution (#Entries, resolution range(Å))
R_{free}	130704	1177 (3.32-3.24)
Clashscore	141614	1044 (3.30-3.26)
Ramachandran outliers	138981	1026 (3.30-3.26)
Sidechain outliers	138945	1025 (3.30-3.26)
RSRZ outliers	127900	1141 (3.32-3.24)

The table below summarises the geometric issues observed across the polymeric chains and their fit to the electron density. The red, orange, yellow and green segments of the lower bar indicate the fraction of residues that contain outliers for ≥ 3 , 2, 1 and 0 types of geometric quality criteria respectively. A grey segment represents the fraction of residues that are not modelled. The numeric value for each fraction is indicated below the corresponding segment, with a dot representing fractions $\leq 5\%$. The upper red bar (where present) indicates the fraction of residues that have poor fit to the electron density. The numeric value is given above the bar.

Mol	Chain	Length	Quality of chain
1	A	524	 65% 24% 11%
1	B	524	 68% 24% 8%
1	C	524	 67% 23% 10%
1	D	524	 64% 25% 10%

2 Entry composition [i](#)

There are 5 unique types of molecules in this entry. The entry contains 14637 atoms, of which 0 are hydrogens and 0 are deuteriums.

In the tables below, the ZeroOcc column contains the number of atoms modelled with zero occupancy, the AltConf column contains the number of residues with at least one atom in alternate conformation and the Trace column contains the number of residues modelled with at most 2 atoms.

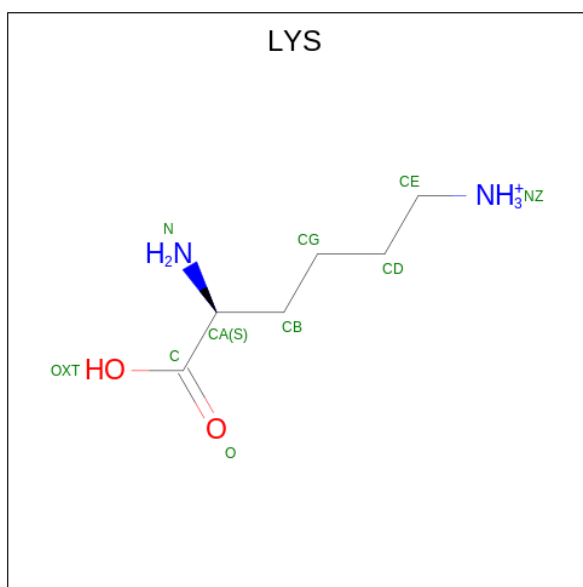
- Molecule 1 is a protein called Lysine-tRNA ligase.

Mol	Chain	Residues	Atoms					ZeroOcc	AltConf	Trace
			Total	C	N	O	S			
1	A	465	3584	2315	610	641	18	0	0	0
1	D	470	3634	2344	620	654	16	0	0	0
1	B	482	3668	2367	635	647	19	0	0	0
1	C	473	3614	2335	616	644	19	0	0	0

There are 8 discrepancies between the modelled and reference sequences:

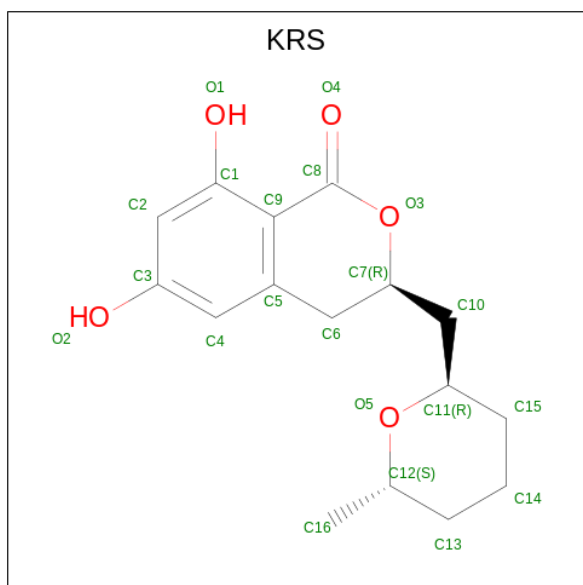
Chain	Residue	Modelled	Actual	Comment	Reference
A	-1	MET	-	cloning artifact	UNP E1FQP0
A	0	ALA	-	cloning artifact	UNP E1FQP0
D	-1	MET	-	cloning artifact	UNP E1FQP0
D	0	ALA	-	cloning artifact	UNP E1FQP0
B	-1	MET	-	cloning artifact	UNP E1FQP0
B	0	ALA	-	cloning artifact	UNP E1FQP0
C	-1	MET	-	cloning artifact	UNP E1FQP0
C	0	ALA	-	cloning artifact	UNP E1FQP0

- Molecule 2 is LYSINE (three-letter code: LYS) (formula: C₆H₁₅N₂O₂).



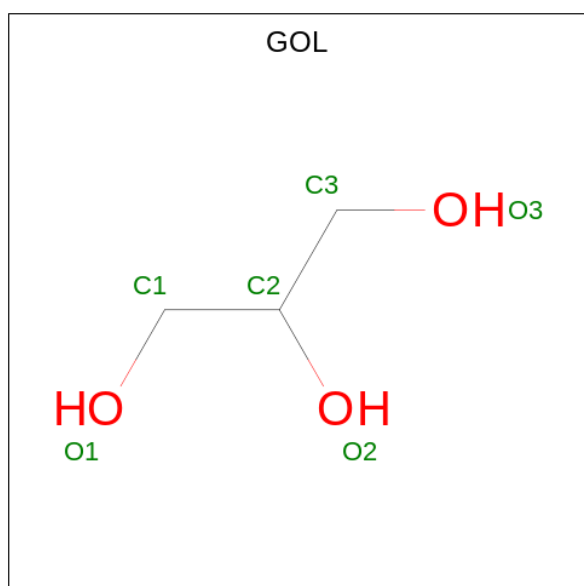
Mol	Chain	Residues	Atoms				ZeroOcc	AltConf	
			Total	C	N	O			
2	A	1	Total	10	6	2	2	0	0
2	D	1	Total	10	6	2	2	0	0
2	B	1	Total	10	6	2	2	0	0
2	C	1	Total	10	6	2	2	0	0

- Molecule 3 is cladosporin (three-letter code: KRS) (formula: C₁₆H₂₀O₅).



Mol	Chain	Residues	Atoms			ZeroOcc	AltConf
3	A	1	Total	C	O	0	0
			21	16	5		
3	D	1	Total	C	O	0	0
			21	16	5		
3	B	1	Total	C	O	0	0
			21	16	5		
3	C	1	Total	C	O	0	0
			21	16	5		

- Molecule 4 is GLYCEROL (three-letter code: GOL) (formula: C₃H₈O₃).



Mol	Chain	Residues	Atoms			ZeroOcc	AltConf
4	D	1	Total	C	O	0	0
			6	3	3		

- Molecule 5 is water.

Mol	Chain	Residues	Atoms		ZeroOcc	AltConf
5	A	2	Total	O	0	0
			2	2		
5	D	1	Total	O	0	0
			1	1		
5	B	3	Total	O	0	0
			3	3		
5	C	1	Total	O	0	0
			1	1		

4 Data and refinement statistics

Property	Value	Source
Space group	P 21 21 21	Depositor
Cell constants a, b, c, α , β , γ	120.17Å 147.35Å 160.94Å 90.00° 90.00° 90.00°	Depositor
Resolution (Å)	43.75 – 3.28 45.76 – 3.28	Depositor EDS
% Data completeness (in resolution range)	90.8 (43.75-3.28) 82.3 (45.76-3.28)	Depositor EDS
R_{merge}	0.24	Depositor
R_{sym}	(Not available)	Depositor
$\langle I/\sigma(I) \rangle$ ¹	0.23 (at 3.25Å)	Xtrriage
Refinement program	PHENIX (1.10.1_2155: ???)	Depositor
R, R_{free}	0.254 , 0.292 0.254 , 0.292	Depositor DCC
R_{free} test set	2000 reflections (4.96%)	wwPDB-VP
Wilson B-factor (Å ²)	45.3	Xtrriage
Anisotropy	0.911	Xtrriage
Bulk solvent k_{sol} (e/Å ³), B_{sol} (Å ²)	0.28 , 50.3	EDS
L-test for twinning ²	$\langle L \rangle = 0.45$, $\langle L^2 \rangle = 0.27$	Xtrriage
Estimated twinning fraction	No twinning to report.	Xtrriage
F_o, F_c correlation	0.86	EDS
Total number of atoms	14637	wwPDB-VP
Average B, all atoms (Å ²)	42.0	wwPDB-VP

Xtrriage's analysis on translational NCS is as follows: *The analyses of the Patterson function reveals a significant off-origin peak that is 26.53 % of the origin peak, indicating pseudo-translational symmetry. The chance of finding a peak of this or larger height randomly in a structure without pseudo-translational symmetry is equal to 2.5923e-03. The detected translational NCS is most likely also responsible for the elevated intensity ratio.*

¹Intensities estimated from amplitudes.

²Theoretical values of $\langle |L| \rangle$, $\langle L^2 \rangle$ for acentric reflections are 0.5, 0.333 respectively for untwinned datasets, and 0.375, 0.2 for perfectly twinned datasets.

5 Model quality [i](#)

5.1 Standard geometry [i](#)

Bond lengths and bond angles in the following residue types are not validated in this section: KRS, GOL

The Z score for a bond length (or angle) is the number of standard deviations the observed value is removed from the expected value. A bond length (or angle) with $|Z| > 5$ is considered an outlier worth inspection. RMSZ is the root-mean-square of all Z scores of the bond lengths (or angles).

Mol	Chain	Bond lengths		Bond angles	
		RMSZ	# Z >5	RMSZ	# Z >5
1	A	0.30	0/3674	0.51	0/4999
1	B	0.29	0/3759	0.51	0/5105
1	C	0.30	0/3706	0.53	1/5027 (0.0%)
1	D	0.31	0/3722	0.53	0/5059
All	All	0.30	0/14861	0.52	1/20190 (0.0%)

There are no bond length outliers.

All (1) bond angle outliers are listed below:

Mol	Chain	Res	Type	Atoms	Z	Observed(°)	Ideal(°)
1	C	157	THR	N-CA-C	-6.15	94.39	111.00

There are no chirality outliers.

There are no planarity outliers.

5.2 Too-close contacts [i](#)

In the following table, the Non-H and H(model) columns list the number of non-hydrogen atoms and hydrogen atoms in the chain respectively. The H(added) column lists the number of hydrogen atoms added and optimized by MolProbity. The Clashes column lists the number of clashes within the asymmetric unit, whereas Symm-Clashes lists symmetry-related clashes.

Mol	Chain	Non-H	H(model)	H(added)	Clashes	Symm-Clashes
1	A	3584	0	3353	91	0
1	B	3668	0	3416	88	1
1	C	3614	0	3338	94	2
1	D	3634	0	3446	104	1
2	A	10	0	12	0	0
2	B	10	0	12	1	0

Continued on next page...

Continued from previous page...

Mol	Chain	Non-H	H(model)	H(added)	Clashes	Symm-Clashes
2	C	10	0	12	2	0
2	D	10	0	12	0	0
3	A	21	0	19	1	0
3	B	21	0	19	4	0
3	C	21	0	19	5	0
3	D	21	0	19	1	0
4	D	6	0	8	0	0
5	A	2	0	0	0	0
5	B	3	0	0	0	0
5	C	1	0	0	0	0
5	D	1	0	0	0	0
All	All	14637	0	13685	351	2

The all-atom clashscore is defined as the number of clashes found per 1000 atoms (including hydrogen atoms). The all-atom clashscore for this structure is 12.

All (351) close contacts within the same asymmetric unit are listed below, sorted by their clash magnitude.

Atom-1	Atom-2	Interatomic distance (Å)	Clash overlap (Å)
1:B:308:ASN:CB	1:B:313:ASN:CB	2.00	1.39
1:C:404:PRO:HB3	1:C:444:ARG:HH21	1.26	0.98
1:A:63:ARG:NH2	1:B:472:TYR:O	2.01	0.93
1:A:65:PHE:CB	1:A:80:HIS:CD2	2.55	0.90
1:A:65:PHE:CB	1:A:80:HIS:NE2	2.35	0.89
1:D:252:ARG:NH1	1:C:200:THR:O	2.07	0.87
1:A:311:VAL:HG12	1:A:312:GLU:H	1.40	0.85
1:D:354:LYS:HG3	1:D:373:THR:HG23	1.61	0.83
1:A:421:LEU:HB3	1:A:429:VAL:HG22	1.58	0.83
1:A:407:LYS:HE2	1:A:436:ASN:HB2	1.61	0.82
1:C:116:VAL:HG13	1:C:132:PRO:HB3	1.61	0.82
1:C:187:ARG:O	1:C:191:ASP:HB2	1.81	0.80
1:C:404:PRO:HB3	1:C:444:ARG:NH2	1.96	0.79
1:A:104:LEU:HD12	1:A:104:LEU:O	1.83	0.79
1:B:77:TYR:HB2	1:B:88:VAL:HG22	1.68	0.75
1:D:230:VAL:HG23	1:D:255:ARG:HG2	1.68	0.74
1:B:116:VAL:HG13	1:B:132:PRO:HB3	1.69	0.74
1:C:421:LEU:HB3	1:C:429:VAL:HB	1.69	0.74
1:B:313:ASN:CB	1:B:314:PRO:HD2	2.18	0.73
1:A:162:ARG:NE	1:A:502:PHE:O	2.21	0.73
1:C:112:ASP:OD2	1:C:137:GLN:NE2	2.21	0.73
1:D:122:ARG:NH1	1:D:126:GLY:O	2.23	0.72

Continued on next page...

Continued from previous page...

Atom-1	Atom-2	Interatomic distance (Å)	Clash overlap (Å)
1:D:12:ARG:HH12	1:D:109:LYS:HB2	1.53	0.72
1:D:100:ALA:HB3	1:D:103:ASN:HB2	1.72	0.71
1:D:337:LEU:HD22	1:D:359:LEU:CD1	2.20	0.71
1:D:370:PRO:O	1:D:375:ARG:NH1	2.23	0.71
1:C:306:HIS:CD2	1:C:315:VAL:HG22	2.25	0.71
1:C:122:ARG:NH1	1:C:126:GLY:O	2.24	0.71
1:D:428:ILE:HG13	1:D:429:VAL:HG23	1.73	0.70
1:B:216:ILE:HD11	1:B:225:ASP:HB2	1.72	0.70
1:B:165:ASP:OD2	1:B:172:VAL:HG21	1.92	0.70
1:A:116:VAL:HG13	1:A:132:PRO:HB3	1.73	0.70
1:D:346:THR:HG21	1:D:401:ILE:HD13	1.74	0.70
1:D:116:VAL:HG13	1:D:132:PRO:HB3	1.73	0.69
1:B:428:ILE:HG13	1:B:429:VAL:HG23	1.73	0.69
1:B:260:ASP:OD1	1:B:261:GLN:N	2.26	0.68
1:B:52:ILE:HD12	1:B:131:ILE:HD12	1.74	0.68
1:A:281:ASP:OD2	1:B:30:LYS:NZ	2.26	0.68
1:D:407:LYS:NZ	1:C:28:PRO:O	2.26	0.68
1:D:418:ARG:HA	1:D:432:TYR:HB3	1.76	0.68
1:A:418:ARG:HA	1:A:432:TYR:HB3	1.74	0.68
1:B:313:ASN:CB	1:B:314:PRO:CD	2.72	0.68
1:B:262:THR:O	1:B:486:ARG:NH2	2.25	0.67
1:D:301:TYR:HD2	1:D:321:THR:HG22	1.57	0.67
1:D:474:LEU:HD12	1:D:475:PRO:HD2	1.75	0.67
1:A:52:ILE:HD11	1:A:94:PHE:HE2	1.60	0.67
1:A:474:LEU:HD12	1:A:475:PRO:HD2	1.76	0.67
1:B:345:ASP:CB	1:B:350:ASP:OD2	2.43	0.67
1:C:428:ILE:HG13	1:C:429:VAL:HG23	1.76	0.67
1:C:474:LEU:HD12	1:C:475:PRO:HD2	1.76	0.67
1:D:233:GLU:HG3	1:D:273:TYR:OH	1.95	0.66
1:D:295:TYR:HB2	1:D:301:TYR:CE1	2.30	0.66
1:B:358:LYS:O	1:B:361:VAL:HG22	1.94	0.66
1:A:354:LYS:HG3	1:A:373:THR:HG23	1.78	0.66
1:C:273:TYR:OH	2:C:601:LYS:NZ	2.29	0.65
1:D:12:ARG:NH1	1:D:109:LYS:HB2	2.11	0.65
1:B:474:LEU:HD12	1:B:475:PRO:HD2	1.78	0.65
1:D:260:ASP:OD1	1:D:261:GLN:N	2.28	0.64
1:A:471:GLU:OE1	1:B:143:HIS:NE2	2.29	0.64
1:A:441:GLN:OE1	1:A:441:GLN:HA	1.98	0.64
1:C:34:SER:HB3	1:C:59:SER:H	1.61	0.63
1:A:143:HIS:NE2	1:B:471:GLU:OE2	2.31	0.63
1:A:200:THR:O	1:B:252:ARG:NH2	2.31	0.63

Continued on next page...

Continued from previous page...

Atom-1	Atom-2	Interatomic distance (Å)	Clash overlap (Å)
1:D:175:ARG:HH11	1:D:492:THR:HB	1.64	0.63
1:A:92:ALA:HB2	1:A:101:PHE:CD2	2.34	0.63
1:A:101:PHE:CE1	1:A:105:HIS:CD2	2.86	0.63
1:D:100:ALA:HB3	1:D:103:ASN:CB	2.29	0.62
1:D:12:ARG:HH22	1:D:109:LYS:H	1.47	0.62
1:D:288:ASP:OD1	1:D:292:ARG:NE	2.32	0.62
1:D:212:ALA:HB1	1:D:257:GLU:OE2	1.99	0.62
1:A:35:ILE:HD11	1:A:40:PHE:HD2	1.63	0.62
1:D:295:TYR:HB2	1:D:301:TYR:HE1	1.64	0.62
1:A:77:TYR:HB2	1:A:88:VAL:HB	1.81	0.62
1:B:78:ASP:OD1	1:B:85:ARG:NH1	2.31	0.62
1:A:101:PHE:CD1	1:A:105:HIS:CD2	2.87	0.62
1:D:228:LEU:HD21	1:C:228:LEU:HD11	1.81	0.61
1:D:472:TYR:O	1:C:63:ARG:NH2	2.33	0.61
1:A:472:TYR:O	1:B:63:ARG:NH2	2.34	0.61
1:A:428:ILE:HG13	1:A:429:VAL:HG13	1.81	0.61
1:D:30:LYS:NZ	1:C:281:ASP:OD2	2.34	0.60
1:C:10:LYS:O	1:C:13:THR:CG2	2.49	0.60
1:A:288:ASP:OD1	1:A:292:ARG:NE	2.34	0.60
1:D:31:PHE:HB2	1:D:138:LEU:HD21	1.82	0.60
1:D:20:ARG:NH2	1:C:437:ASP:OD2	2.34	0.60
1:D:158:ARG:NH2	1:D:499:GLU:OE1	2.34	0.60
1:D:403:SER:HB2	1:D:416:THR:HG21	1.83	0.60
1:C:9:PHE:O	1:C:13:THR:HG22	2.01	0.60
1:D:385:LEU:O	1:D:388:THR:HG22	2.02	0.59
1:B:421:LEU:HB3	1:B:429:VAL:HB	1.84	0.59
1:C:308:ASN:O	1:C:312:GLU:HB2	2.03	0.59
1:D:155:GLN:O	1:D:158:ARG:HG2	2.03	0.59
1:D:382:GLY:HA2	1:D:386:GLU:HB2	1.84	0.59
1:C:344:ALA:HB1	1:C:414:GLY:HA3	1.84	0.58
1:B:233:GLU:HG3	1:B:273:TYR:OH	2.02	0.58
1:A:37:LEU:HD22	1:A:81:GLY:HA3	1.84	0.58
1:D:12:ARG:NH2	1:D:112:ASP:OD2	2.37	0.58
1:C:355:PHE:HD1	1:C:355:PHE:O	1.87	0.58
1:B:375:ARG:O	1:B:379:LYS:HG2	2.03	0.58
1:C:297:MET:HG3	1:C:298:HIS:ND1	2.19	0.58
1:B:230:VAL:HG23	1:B:255:ARG:HG2	1.84	0.58
1:B:264:ASN:H	3:B:602:KRS:H3	1.69	0.58
1:D:252:ARG:HG3	1:D:268:THR:HG22	1.85	0.58
1:C:404:PRO:HD3	1:C:444:ARG:HH22	1.69	0.57
1:D:197:GLU:HB2	1:D:248:TYR:CZ	2.40	0.57

Continued on next page...

Continued from previous page...

Atom-1	Atom-2	Interatomic distance (Å)	Clash overlap (Å)
1:B:475:PRO:O	1:B:477:THR:OG1	2.22	0.57
1:C:152:LEU:CB	1:C:154:ASN:N	2.68	0.56
1:A:13:THR:O	1:A:17:ASN:ND2	2.28	0.56
1:A:195:PHE:HB3	1:A:248:TYR:HD2	1.70	0.56
1:D:59:SER:HA	1:D:116:VAL:O	2.06	0.56
1:D:346:THR:HG21	1:D:401:ILE:HG21	1.87	0.56
1:D:421:LEU:HB3	1:D:429:VAL:HB	1.88	0.56
1:C:404:PRO:CB	1:C:444:ARG:NH2	2.67	0.56
1:C:434:GLU:HB2	1:C:477:THR:HG23	1.87	0.55
1:A:99:GLU:OE2	1:A:107:ARG:NH2	2.38	0.55
1:D:49:LYS:O	1:D:123:SER:O	2.24	0.55
1:C:10:LYS:O	1:C:13:THR:HG22	2.07	0.54
1:A:335:GLU:OE1	1:D:125:SER:OG	2.22	0.54
1:C:356:PHE:CE1	1:C:359:LEU:HG	2.43	0.54
1:A:429:VAL:HG12	1:A:482:MET:HB2	1.89	0.54
1:B:325:ARG:HG3	1:B:393:THR:HG23	1.89	0.54
1:D:195:PHE:HB3	1:D:248:TYR:HD2	1.71	0.54
1:B:362:GLU:CB	1:B:379:LYS:NZ	2.70	0.54
1:A:317:GLU:N	1:A:317:GLU:OE1	2.41	0.53
1:A:311:VAL:HG12	1:A:312:GLU:N	2.16	0.53
1:C:279:TYR:CD1	1:C:417:GLU:HB3	2.43	0.53
1:D:158:ARG:NH1	1:D:165:ASP:OD2	2.42	0.53
1:D:282:LEU:HD13	1:D:480:TRP:HB2	1.91	0.53
1:D:28:PRO:HD2	1:D:138:LEU:O	2.08	0.53
1:B:28:PRO:HD2	1:B:138:LEU:O	2.09	0.53
1:A:12:ARG:NH2	1:A:107:ARG:O	2.38	0.53
1:B:430:ASN:HB2	3:B:602:KRS:H17	1.91	0.53
1:B:179:ARG:NH1	1:B:500:VAL:O	2.42	0.52
1:D:234:LEU:O	1:D:238:MET:HG3	2.10	0.52
1:A:197:GLU:HB2	1:A:248:TYR:CZ	2.44	0.52
1:D:464:GLU:HG3	1:D:466:TYR:H	1.75	0.52
1:B:20:ARG:HA	1:B:24:ILE:O	2.10	0.52
1:C:75:ILE:HD12	1:C:105:HIS:CD2	2.45	0.52
1:A:317:GLU:O	1:A:317:GLU:HG2	2.09	0.52
1:D:235:TYR:O	1:D:239:LEU:HD12	2.10	0.52
1:D:399:PRO:HD2	1:D:402:MET:SD	2.51	0.51
1:C:10:LYS:C	1:C:13:THR:HG22	2.31	0.51
1:A:179:ARG:HH12	1:A:501:LEU:HD23	1.75	0.51
1:C:165:ASP:OD1	1:C:169:ASN:ND2	2.44	0.51
1:C:288:ASP:O	1:C:292:ARG:HG3	2.10	0.51
1:C:394:PHE:CE1	1:C:421:LEU:HD12	2.46	0.51

Continued on next page...

Continued from previous page...

Atom-1	Atom-2	Interatomic distance (Å)	Clash overlap (Å)
1:C:418:ARG:HD2	1:C:432:TYR:HE1	1.75	0.51
1:D:346:THR:HG23	1:D:373:THR:HG21	1.93	0.51
1:D:332:GLY:O	1:D:336:LYS:HB2	2.11	0.51
1:D:387:PRO:HA	1:D:425:THR:HG23	1.93	0.51
1:A:101:PHE:CE1	1:A:105:HIS:NE2	2.79	0.50
1:A:186:LEU:HD21	1:A:270:CYS:SG	2.51	0.50
1:B:67:LYS:NZ	1:B:77:TYR:OH	2.44	0.50
1:A:230:VAL:HG23	1:A:255:ARG:HG2	1.93	0.50
1:D:100:ALA:CB	1:D:103:ASN:OD1	2.59	0.50
1:D:471:GLU:OE1	1:C:143:HIS:NE2	2.44	0.50
1:B:77:TYR:HB2	1:B:88:VAL:CG2	2.39	0.50
1:A:335:GLU:HG3	1:D:123:SER:OG	2.11	0.50
1:A:434:GLU:HB2	1:A:477:THR:HG23	1.93	0.50
1:D:337:LEU:HD22	1:D:359:LEU:HD11	1.93	0.50
1:B:34:SER:CB	1:B:59:SER:H	2.24	0.50
1:B:362:GLU:CB	1:B:379:LYS:HZ1	2.25	0.50
1:C:418:ARG:HD2	1:C:432:TYR:CE1	2.47	0.50
1:D:201:PRO:HD3	1:C:503:PHE:HB2	1.93	0.50
1:A:18:GLU:O	1:A:22:LYS:HG3	2.12	0.49
1:A:399:PRO:HD2	1:A:402:MET:SD	2.52	0.49
1:B:248:TYR:CE1	1:B:250:ILE:HG13	2.47	0.49
1:B:382:GLY:O	1:B:387:PRO:HD3	2.12	0.49
1:C:209:GLY:HA3	1:C:231:ALA:HB3	1.94	0.49
1:C:355:PHE:HA	1:C:376:LEU:HD13	1.94	0.49
1:A:110:ARG:NH2	1:A:145:LEU:O	2.46	0.49
1:C:356:PHE:CD1	1:C:356:PHE:C	2.86	0.49
1:C:430:ASN:O	2:C:601:LYS:HD2	2.12	0.49
1:A:163:TYR:O	1:A:167:ILE:HG13	2.13	0.49
1:C:276:TYR:N	1:C:476:PRO:O	2.42	0.49
1:A:403:SER:HB2	1:A:416:THR:HG21	1.94	0.49
1:A:52:ILE:HD11	1:A:94:PHE:CE2	2.46	0.49
1:D:77:TYR:HB2	1:D:88:VAL:HB	1.94	0.49
1:C:230:VAL:HG23	1:C:255:ARG:HG2	1.95	0.49
1:B:34:SER:N	1:B:59:SER:O	2.46	0.48
1:D:215:PHE:HB2	1:D:228:LEU:HB2	1.95	0.48
1:B:179:ARG:O	1:B:182:MET:HB3	2.14	0.48
1:C:234:LEU:O	1:C:238:MET:HG3	2.13	0.48
1:A:257:GLU:OE1	3:A:602:KRS:O2	2.13	0.48
1:C:387:PRO:HA	1:C:425:THR:OG1	2.13	0.48
1:C:441:GLN:OE1	1:C:441:GLN:HA	2.13	0.48
1:D:63:ARG:NH2	1:C:241:VAL:O	2.46	0.48

Continued on next page...

Continued from previous page...

Atom-1	Atom-2	Interatomic distance (Å)	Clash overlap (Å)
1:D:427:GLU:HG2	3:D:603:KRS:H19	1.95	0.48
1:B:418:ARG:HA	1:B:432:TYR:HB3	1.96	0.48
1:A:381:ILE:HG22	1:A:386:GLU:HG3	1.96	0.48
1:D:444:ARG:HD3	1:D:444:ARG:HA	1.52	0.48
1:A:359:LEU:HD12	1:A:384:PHE:CZ	2.48	0.48
1:A:31:PHE:HB2	1:A:138:LEU:HD21	1.95	0.48
1:B:236:LEU:O	1:B:240:VAL:HG23	2.14	0.48
1:A:332:GLY:HA2	1:D:125:SER:HB3	1.96	0.48
1:B:400:GLN:HG3	1:B:416:THR:HG22	1.96	0.47
1:C:193:LEU:N	1:C:193:LEU:HD12	2.28	0.47
1:C:10:LYS:O	1:C:13:THR:HG23	2.14	0.47
1:C:257:GLU:OE1	3:C:602:KRS:O2	2.21	0.47
1:C:399:PRO:HD2	1:C:402:MET:SD	2.54	0.47
1:A:209:GLY:HA3	1:A:231:ALA:HB3	1.95	0.47
1:A:409:HIS:HB3	1:A:412:ILE:O	2.13	0.47
1:B:37:LEU:HD22	1:B:81:GLY:HA3	1.96	0.47
1:C:257:GLU:HB2	3:C:602:KRS:O2	2.15	0.47
1:A:177:VAL:HA	1:B:196:LEU:HD11	1.95	0.47
1:B:228:LEU:HD23	1:B:254:PHE:CD2	2.49	0.47
1:A:410:ARG:NH2	1:A:417:GLU:OE2	2.47	0.47
1:A:202:MET:HA	1:A:229:ARG:HB3	1.97	0.47
1:C:195:PHE:CD1	1:C:246:ARG:HB3	2.50	0.47
1:A:104:LEU:HD12	1:A:104:LEU:C	2.34	0.46
1:D:53:LEU:O	1:D:119:TYR:HB3	2.15	0.46
1:B:328:ASN:OD1	1:B:329:ILE:N	2.48	0.46
1:C:483:GLY:N	3:C:602:KRS:H17	2.30	0.46
1:A:279:TYR:CD1	1:A:417:GLU:HB3	2.50	0.46
1:A:344:ALA:HB3	1:A:414:GLY:HA3	1.97	0.46
1:A:424:VAL:O	1:A:425:THR:HG22	2.16	0.46
1:B:110:ARG:NH2	1:B:145:LEU:O	2.48	0.46
1:C:10:LYS:CA	1:C:13:THR:HG22	2.46	0.46
1:C:424:VAL:O	1:C:425:THR:HG22	2.16	0.46
1:A:443:LEU:HD12	1:A:443:LEU:N	2.30	0.46
1:A:418:ARG:HH21	1:A:430:ASN:HD21	1.63	0.46
1:D:307:PRO:HD2	1:D:314:PRO:O	2.16	0.46
1:C:404:PRO:CG	1:C:444:ARG:NH2	2.78	0.46
1:A:125:SER:OG	1:D:332:GLY:HA2	2.16	0.46
1:B:261:GLN:O	1:B:497:ILE:N	2.42	0.46
1:B:53:LEU:O	1:B:119:TYR:HB3	2.16	0.46
1:D:356:PHE:HD2	1:D:380:LEU:HD11	1.80	0.45
1:C:44:TYR:HB3	1:C:47:LEU:HD22	1.98	0.45

Continued on next page...

Continued from previous page...

Atom-1	Atom-2	Interatomic distance (Å)	Clash overlap (Å)
1:B:260:ASP:HB3	1:B:263:HIS:HB2	1.98	0.45
1:A:44:TYR:OH	1:A:56:ILE:HG21	2.16	0.45
1:D:31:PHE:CD2	1:D:136:ILE:HD11	2.51	0.45
1:D:186:LEU:HD21	1:D:270:CYS:SG	2.56	0.45
1:D:41:ILE:HD11	1:D:84:THR:HG21	1.98	0.45
1:B:233:GLU:OE1	1:B:432:TYR:OH	2.28	0.45
1:A:22:LYS:HE3	1:A:22:LYS:HB3	1.79	0.45
1:C:485:ASP:OD2	1:C:501:LEU:HD21	2.17	0.45
1:B:172:VAL:O	1:B:175:ARG:HB3	2.16	0.45
1:B:193:LEU:O	1:B:246:ARG:NH1	2.50	0.45
1:C:37:LEU:HD12	1:C:81:GLY:HA3	1.99	0.45
1:B:195:PHE:CD1	1:B:246:ARG:HB3	2.52	0.45
1:A:280:GLU:HG2	1:A:283:MET:HE2	1.99	0.45
1:A:317:GLU:O	1:A:317:GLU:CG	2.64	0.45
1:A:354:LYS:HA	1:A:354:LYS:HD3	1.69	0.45
1:C:19:ARG:HH12	1:C:26:PRO:HA	1.82	0.45
1:B:234:LEU:O	1:B:238:MET:HG3	2.18	0.44
1:C:248:TYR:CE1	1:C:250:ILE:HG13	2.52	0.44
1:C:356:PHE:CD1	1:C:356:PHE:O	2.70	0.44
1:A:503:PHE:HB2	1:B:201:PRO:CG	2.47	0.44
1:B:280:GLU:HA	1:B:283:MET:HE2	1.98	0.44
1:C:187:ARG:HG2	1:C:248:TYR:OH	2.16	0.44
1:A:324:PHE:HB3	1:A:392:PRO:O	2.17	0.44
1:B:190:LEU:HD13	1:B:248:TYR:CE1	2.52	0.44
1:C:260:ASP:HB2	1:C:263:HIS:HB2	2.00	0.44
1:C:394:PHE:HE1	1:C:421:LEU:HD12	1.82	0.44
1:D:228:LEU:HD23	1:D:228:LEU:HA	1.83	0.44
1:A:195:PHE:CZ	1:A:274:MET:HG3	2.53	0.44
1:D:163:TYR:O	1:D:167:ILE:HG13	2.18	0.44
1:C:246:ARG:HG2	1:C:274:MET:HG3	1.99	0.44
1:C:389:PHE:CE1	1:C:393:THR:HG21	2.52	0.44
1:C:483:GLY:H	3:C:602:KRS:H17	1.82	0.44
1:B:73:LYS:HE2	1:B:91:ASN:OD1	2.18	0.44
1:B:208:GLY:HA2	1:B:209:GLY:HA2	1.71	0.44
1:C:41:ILE:HD12	1:C:84:THR:HG21	2.00	0.44
1:A:301:TYR:O	1:A:320:PHE:HB2	2.18	0.43
1:B:110:ARG:NH2	1:B:146:PRO:O	2.44	0.43
1:A:189:TYR:OH	1:A:288:ASP:OD2	2.33	0.43
1:D:100:ALA:HB3	1:D:103:ASN:CG	2.39	0.43
1:D:165:ASP:OD1	1:D:169:ASN:ND2	2.51	0.43
1:D:337:LEU:HD11	1:D:380:LEU:HD13	2.00	0.43

Continued on next page...

Continued from previous page...

Atom-1	Atom-2	Interatomic distance (Å)	Clash overlap (Å)
1:B:264:ASN:N	3:B:602:KRS:H3	2.33	0.43
1:C:73:LYS:HE2	1:C:91:ASN:OD1	2.18	0.43
1:A:342:PRO:HD3	1:A:353:ASN:HD22	1.83	0.43
1:B:207:ALA:HB2	1:B:227:TYR:CB	2.49	0.43
2:B:601:LYS:HB3	3:B:602:KRS:H16	2.00	0.43
1:D:31:PHE:HD2	1:D:136:ILE:HD11	1.83	0.43
1:D:279:TYR:CD1	1:D:417:GLU:HB3	2.54	0.43
1:D:329:ILE:HG23	1:D:381:ILE:HD11	2.01	0.43
1:B:279:TYR:CD1	1:B:417:GLU:HB3	2.53	0.43
1:C:79:LEU:O	1:C:85:ARG:HA	2.19	0.43
1:C:353:ASN:O	1:C:353:ASN:ND2	2.52	0.43
1:B:392:PRO:HA	1:B:422:PHE:O	2.19	0.43
1:D:65:PHE:HB2	1:D:80:HIS:CD2	2.53	0.43
1:D:399:PRO:HB2	1:D:401:ILE:HG12	2.01	0.43
1:B:89:LEU:O	1:B:132:PRO:HD2	2.19	0.43
1:D:328:ASN:OD1	1:D:329:ILE:N	2.52	0.42
1:D:339:ILE:HG12	1:D:340:GLN:N	2.34	0.42
1:D:339:ILE:HG12	1:D:340:GLN:H	1.83	0.42
1:B:207:ALA:HB2	1:B:227:TYR:HB3	2.00	0.42
1:A:195:PHE:HB3	1:A:248:TYR:CD2	2.52	0.42
1:A:112:ASP:OD2	1:A:137:GLN:NE2	2.52	0.42
1:A:253:VAL:HG12	1:A:267:PHE:O	2.19	0.42
1:A:339:ILE:HG21	1:A:356:PHE:HZ	1.85	0.42
1:D:179:ARG:HH12	1:D:501:LEU:HD23	1.84	0.42
1:C:15:LEU:HD23	1:C:15:LEU:HA	1.79	0.42
1:C:233:GLU:HG3	1:C:273:TYR:OH	2.19	0.42
1:C:169:ASN:O	1:C:172:VAL:HG22	2.20	0.42
1:B:185:PHE:HA	1:B:188:ARG:HG2	2.01	0.42
1:C:213:LYS:HE2	1:C:256:ASN:O	2.20	0.42
1:A:337:LEU:O	1:D:70:SER:OG	2.26	0.42
1:D:30:LYS:HZ2	1:C:277:ALA:HA	1.84	0.42
1:D:329:ILE:HD12	1:D:381:ILE:CD1	2.50	0.42
1:D:343:PRO:O	1:D:345:ASP:N	2.52	0.42
1:B:394:PHE:CE1	1:B:421:LEU:HD12	2.55	0.42
1:A:195:PHE:CD2	1:A:246:ARG:HB3	2.55	0.42
1:B:189:TYR:OH	1:B:288:ASP:OD2	2.37	0.42
1:C:59:SER:HA	1:C:116:VAL:O	2.19	0.42
1:A:394:PHE:CD1	1:A:421:LEU:HD13	2.54	0.41
1:D:389:PHE:CE1	1:D:393:THR:HG21	2.55	0.41
1:B:164:LEU:HD12	1:B:164:LEU:HA	1.83	0.41
1:B:185:PHE:CD1	1:B:293:MET:HE2	2.55	0.41

Continued on next page...

Continued from previous page...

Atom-1	Atom-2	Interatomic distance (Å)	Clash overlap (Å)
1:D:34:SER:CB	1:D:59:SER:H	2.33	0.41
1:B:216:ILE:HD12	1:B:226:LEU:O	2.20	0.41
1:C:353:ASN:ND2	1:C:353:ASN:C	2.73	0.41
1:C:389:PHE:CD1	1:C:393:THR:HG21	2.55	0.41
1:A:355:PHE:HE1	1:A:371:ARG:HD3	1.85	0.41
1:B:74:LEU:HD23	1:B:76:PHE:CZ	2.55	0.41
1:C:395:LEU:O	1:C:419:PHE:HA	2.20	0.41
1:A:139:THR:HG21	1:B:474:LEU:H	1.84	0.41
1:D:277:ALA:O	1:D:478:ALA:HB2	2.21	0.41
1:D:337:LEU:HD12	1:D:341:PHE:CZ	2.56	0.41
1:D:418:ARG:CA	1:D:432:TYR:HB3	2.47	0.41
1:C:377:LEU:HD13	1:C:399:PRO:HG2	2.03	0.41
1:B:175:ARG:HG3	1:B:492:THR:CG2	2.51	0.41
1:D:200:THR:HB	1:D:201:PRO:HD2	2.03	0.41
1:B:324:PHE:HB2	1:B:394:PHE:CE2	2.55	0.41
1:B:400:GLN:HG3	1:B:416:THR:CG2	2.51	0.41
1:C:178:THR:O	1:C:182:MET:N	2.50	0.41
1:A:17:ASN:O	1:A:20:ARG:HB3	2.20	0.41
1:A:337:LEU:HD21	1:A:384:PHE:CD2	2.56	0.41
1:D:268:THR:HG21	1:C:199:GLU:OE2	2.21	0.41
1:B:412:ILE:HG21	1:B:415:LEU:HD13	2.03	0.41
1:D:45:ASN:OD1	1:D:46:SER:N	2.54	0.41
1:D:143:HIS:NE2	1:C:471:GLU:OE1	2.54	0.41
1:D:312:GLU:HB3	1:D:313:ASN:H	1.74	0.41
1:B:36:SER:O	1:B:40:PHE:N	2.49	0.41
1:B:163:TYR:O	1:B:167:ILE:HG13	2.21	0.41
1:C:65:PHE:HB2	1:C:80:HIS:CD2	2.56	0.41
1:C:382:GLY:O	1:C:387:PRO:HD3	2.20	0.41
1:B:193:LEU:HD23	1:B:193:LEU:HA	1.91	0.41
1:A:232:PRO:O	1:A:236:LEU:HG	2.22	0.40
1:D:29:HIS:HE1	1:C:408:TRP:O	2.04	0.40
1:D:96:SER:CB	1:D:133:TYR:HB2	2.51	0.40
1:B:197:GLU:HA	1:B:248:TYR:O	2.21	0.40
1:B:389:PHE:O	1:B:425:THR:N	2.51	0.40
1:A:89:LEU:O	1:A:132:PRO:HD2	2.21	0.40
1:A:297:MET:SD	1:A:491:LEU:HD13	2.61	0.40
1:B:59:SER:HA	1:B:116:VAL:O	2.21	0.40
1:C:280:GLU:HA	1:C:283:MET:HE2	2.03	0.40
1:D:356:PHE:CD2	1:D:380:LEU:HD11	2.56	0.40
1:C:428:ILE:C	3:C:602:KRS:H18	2.41	0.40
1:D:110:ARG:NH1	1:D:145:LEU:HB2	2.36	0.40

Continued on next page...

Continued from previous page...

Atom-1	Atom-2	Interatomic distance (Å)	Clash overlap (Å)
1:B:385:LEU:HD23	1:B:385:LEU:HA	1.85	0.40

All (2) symmetry-related close contacts are listed below. The label for Atom-2 includes the symmetry operator and encoded unit-cell translations to be applied.

Atom-1	Atom-2	Interatomic distance (Å)	Clash overlap (Å)
1:D:96:SER:CB	1:C:70:SER:OG[2_455]	1.98	0.22
1:B:95:HIS:O	1:C:336:LYS:NZ[2_455]	2.18	0.02

5.3 Torsion angles [i](#)

5.3.1 Protein backbone [i](#)

In the following table, the Percentiles column shows the percent Ramachandran outliers of the chain as a percentile score with respect to all X-ray entries followed by that with respect to entries of similar resolution.

The Analysed column shows the number of residues for which the backbone conformation was analysed, and the total number of residues.

Mol	Chain	Analysed	Favoured	Allowed	Outliers	Percentiles	
1	A	455/524 (87%)	441 (97%)	14 (3%)	0	100	100
1	B	474/524 (90%)	453 (96%)	20 (4%)	1 (0%)	47	77
1	C	463/524 (88%)	442 (96%)	21 (4%)	0	100	100
1	D	460/524 (88%)	438 (95%)	21 (5%)	1 (0%)	47	77
All	All	1852/2096 (88%)	1774 (96%)	76 (4%)	2 (0%)	51	82

All (2) Ramachandran outliers are listed below:

Mol	Chain	Res	Type
1	D	314	PRO
1	B	310	ILE

5.3.2 Protein sidechains [i](#)

In the following table, the Percentiles column shows the percent sidechain outliers of the chain as a percentile score with respect to all X-ray entries followed by that with respect to entries of similar resolution.

The Analysed column shows the number of residues for which the sidechain conformation was analysed, and the total number of residues.

Mol	Chain	Analysed	Rotameric	Outliers	Percentiles	
1	A	346/459 (75%)	346 (100%)	0	100	100
1	B	345/459 (75%)	344 (100%)	1 (0%)	92	96
1	C	340/459 (74%)	336 (99%)	4 (1%)	71	83
1	D	363/459 (79%)	361 (99%)	2 (1%)	86	91
All	All	1394/1836 (76%)	1387 (100%)	7 (0%)	88	93

All (7) residues with a non-rotameric sidechain are listed below:

Mol	Chain	Res	Type
1	D	356	PHE
1	D	432	TYR
1	B	248	TYR
1	C	149	HIS
1	C	171	ASP
1	C	355	PHE
1	C	432	TYR

Sometimes sidechains can be flipped to improve hydrogen bonding and reduce clashes. There are no such sidechains identified.

5.3.3 RNA [i](#)

There are no RNA molecules in this entry.

5.4 Non-standard residues in protein, DNA, RNA chains [i](#)

There are no non-standard protein/DNA/RNA residues in this entry.

5.5 Carbohydrates [i](#)

There are no monosaccharides in this entry.

5.6 Ligand geometry [i](#)

9 ligands are modelled in this entry.

In the following table, the Counts columns list the number of bonds (or angles) for which Mogul statistics could be retrieved, the number of bonds (or angles) that are observed in the model and the number of bonds (or angles) that are defined in the Chemical Component Dictionary. The Link column lists molecule types, if any, to which the group is linked. The Z score for a bond length (or angle) is the number of standard deviations the observed value is removed from the expected value. A bond length (or angle) with $|Z| > 2$ is considered an outlier worth inspection. RMSZ is the root-mean-square of all Z scores of the bond lengths (or angles).

Mol	Type	Chain	Res	Link	Bond lengths			Bond angles		
					Counts	RMSZ	# Z > 2	Counts	RMSZ	# Z > 2
2	LYS	C	601	-	8,9,9	0.82	1 (12%)	9,10,10	1.14	2 (22%)
2	LYS	D	602	-	8,9,9	0.81	1 (12%)	9,10,10	1.22	2 (22%)
3	KRS	A	602	-	23,23,23	1.67	6 (26%)	33,33,33	1.46	6 (18%)
3	KRS	B	602	-	23,23,23	1.68	6 (26%)	33,33,33	1.46	6 (18%)
4	GOL	D	601	-	5,5,5	0.37	0	5,5,5	0.33	0
2	LYS	A	601	-	8,9,9	0.80	1 (12%)	9,10,10	1.22	2 (22%)
2	LYS	B	601	-	8,9,9	0.82	1 (12%)	9,10,10	1.19	2 (22%)
3	KRS	C	602	-	23,23,23	1.64	6 (26%)	33,33,33	1.66	8 (24%)
3	KRS	D	603	-	23,23,23	1.69	7 (30%)	33,33,33	1.43	6 (18%)

In the following table, the Chirals column lists the number of chiral outliers, the number of chiral centers analysed, the number of these observed in the model and the number defined in the Chemical Component Dictionary. Similar counts are reported in the Torsion and Rings columns. '-' means no outliers of that kind were identified.

Mol	Type	Chain	Res	Link	Chirals	Torsions	Rings
2	LYS	C	601	-	-	4/9/9/9	-
2	LYS	D	602	-	-	3/9/9/9	-
3	KRS	A	602	-	-	0/4/26/26	0/3/3/3
3	KRS	B	602	-	-	0/4/26/26	0/3/3/3
4	GOL	D	601	-	-	2/4/4/4	-
2	LYS	A	601	-	-	4/9/9/9	-
2	LYS	B	601	-	-	2/9/9/9	-
3	KRS	C	602	-	-	4/4/26/26	0/3/3/3
3	KRS	D	603	-	-	0/4/26/26	0/3/3/3

All (29) bond length outliers are listed below:

Mol	Chain	Res	Type	Atoms	Z	Observed(Å)	Ideal(Å)
3	A	602	KRS	C6-C5	4.06	1.59	1.51
3	D	603	KRS	C6-C5	4.05	1.59	1.51

Continued on next page...

Continued from previous page...

Mol	Chain	Res	Type	Atoms	Z	Observed(Å)	Ideal(Å)
3	B	602	KRS	C6-C5	3.99	1.59	1.51
3	C	602	KRS	C6-C5	3.87	1.58	1.51
3	B	602	KRS	C14-C15	-3.55	1.43	1.53
3	A	602	KRS	C14-C15	-3.55	1.43	1.53
3	D	603	KRS	C14-C15	-3.54	1.43	1.53
3	C	602	KRS	C14-C15	-3.50	1.44	1.53
3	B	602	KRS	O2-C3	3.16	1.44	1.37
3	D	603	KRS	O2-C3	3.10	1.44	1.37
3	A	602	KRS	O2-C3	3.06	1.44	1.37
3	C	602	KRS	O2-C3	2.96	1.43	1.37
3	B	602	KRS	O3-C7	-2.64	1.40	1.46
3	A	602	KRS	O3-C7	-2.64	1.40	1.46
3	D	603	KRS	C14-C13	-2.62	1.46	1.53
3	D	603	KRS	O3-C7	-2.62	1.40	1.46
3	C	602	KRS	O3-C7	-2.59	1.40	1.46
3	C	602	KRS	C14-C13	-2.56	1.46	1.53
3	B	602	KRS	C14-C13	-2.54	1.46	1.53
3	A	602	KRS	C14-C13	-2.53	1.46	1.53
2	C	601	LYS	OXT-C	-2.17	1.23	1.30
2	D	602	LYS	OXT-C	-2.16	1.23	1.30
2	B	601	LYS	OXT-C	-2.15	1.23	1.30
2	A	601	LYS	OXT-C	-2.14	1.23	1.30
3	B	602	KRS	O3-C8	2.12	1.38	1.35
3	C	602	KRS	O3-C8	2.05	1.38	1.35
3	D	603	KRS	O3-C8	2.04	1.38	1.35
3	D	603	KRS	C4-C3	2.03	1.42	1.39
3	A	602	KRS	C4-C3	2.01	1.42	1.39

All (34) bond angle outliers are listed below:

Mol	Chain	Res	Type	Atoms	Z	Observed(°)	Ideal(°)
3	A	602	KRS	C11-C10-C7	-4.05	108.14	114.39
3	B	602	KRS	O5-C12-C13	3.70	112.56	109.96
3	C	602	KRS	C11-C10-C7	-3.66	108.73	114.39
3	C	602	KRS	C10-C7-C6	-3.38	107.09	113.44
3	D	603	KRS	O5-C11-C15	3.25	113.35	109.86
3	C	602	KRS	C14-C13-C12	3.16	113.22	111.04
3	D	603	KRS	O3-C8-O4	3.12	121.08	117.60
3	C	602	KRS	O3-C8-O4	3.10	121.06	117.60
3	A	602	KRS	O3-C8-O4	3.01	120.96	117.60
3	C	602	KRS	O5-C12-C13	2.94	112.03	109.96
3	B	602	KRS	O3-C8-O4	2.94	120.88	117.60

Continued on next page...

Continued from previous page...

Mol	Chain	Res	Type	Atoms	Z	Observed(°)	Ideal(°)
3	A	602	KRS	O5-C12-C13	2.86	111.97	109.96
3	D	603	KRS	O5-C12-C13	2.85	111.97	109.96
3	A	602	KRS	O5-C11-C15	2.78	112.85	109.86
3	D	603	KRS	C11-C10-C7	-2.74	110.16	114.39
2	A	601	LYS	OXT-C-O	-2.72	117.91	124.09
3	B	602	KRS	C10-C7-C6	-2.70	108.36	113.44
3	B	602	KRS	O5-C11-C15	2.68	112.74	109.86
3	C	602	KRS	O5-C11-C15	2.66	112.72	109.86
2	B	601	LYS	OXT-C-O	-2.65	118.08	124.09
2	D	602	LYS	OXT-C-O	-2.62	118.14	124.09
3	B	602	KRS	C11-C10-C7	-2.61	110.36	114.39
3	C	602	KRS	C10-C11-C15	-2.52	108.02	113.83
3	B	602	KRS	C10-C11-C15	-2.51	108.04	113.83
2	C	601	LYS	OXT-C-O	-2.45	118.53	124.09
3	A	602	KRS	C10-C11-C15	-2.43	108.22	113.83
3	D	603	KRS	C10-C7-C6	-2.38	108.95	113.44
3	C	602	KRS	O3-C7-C6	2.31	113.16	110.20
2	D	602	LYS	OXT-C-CA	2.26	121.10	113.38
3	A	602	KRS	C10-C7-C6	-2.23	109.24	113.44
2	B	601	LYS	OXT-C-CA	2.22	120.95	113.38
2	A	601	LYS	OXT-C-CA	2.18	120.83	113.38
3	D	603	KRS	C10-C11-C15	-2.18	108.79	113.83
2	C	601	LYS	OXT-C-CA	2.18	120.82	113.38

There are no chirality outliers.

All (19) torsion outliers are listed below:

Mol	Chain	Res	Type	Atoms
2	A	601	LYS	O-C-CA-N
2	D	602	LYS	C-CA-CB-CG
2	B	601	LYS	O-C-CA-N
3	C	602	KRS	C11-C10-C7-O3
3	C	602	KRS	C11-C10-C7-C6
4	D	601	GOL	C1-C2-C3-O3
2	B	601	LYS	OXT-C-CA-N
2	A	601	LYS	OXT-C-CA-N
3	C	602	KRS	C7-C10-C11-O5
2	C	601	LYS	OXT-C-CA-N
2	D	602	LYS	OXT-C-CA-N
2	C	601	LYS	CG-CD-CE-NZ
4	D	601	GOL	O2-C2-C3-O3
3	C	602	KRS	C7-C10-C11-C15

Continued on next page...

Continued from previous page...

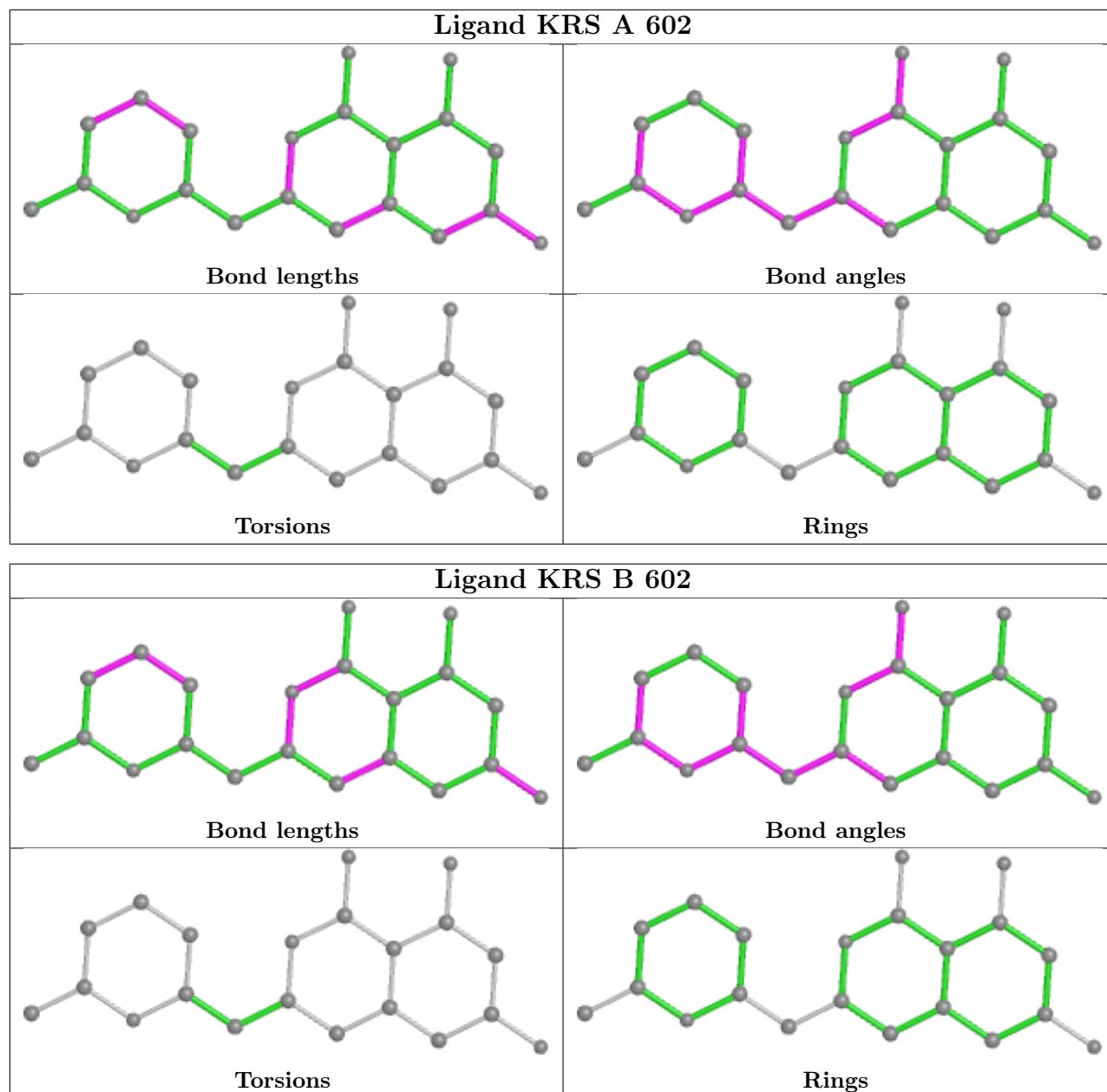
Mol	Chain	Res	Type	Atoms
2	D	602	LYS	O-C-CA-N
2	C	601	LYS	O-C-CA-N
2	A	601	LYS	OXT-C-CA-CB
2	A	601	LYS	O-C-CA-CB
2	C	601	LYS	CA-CB-CG-CD

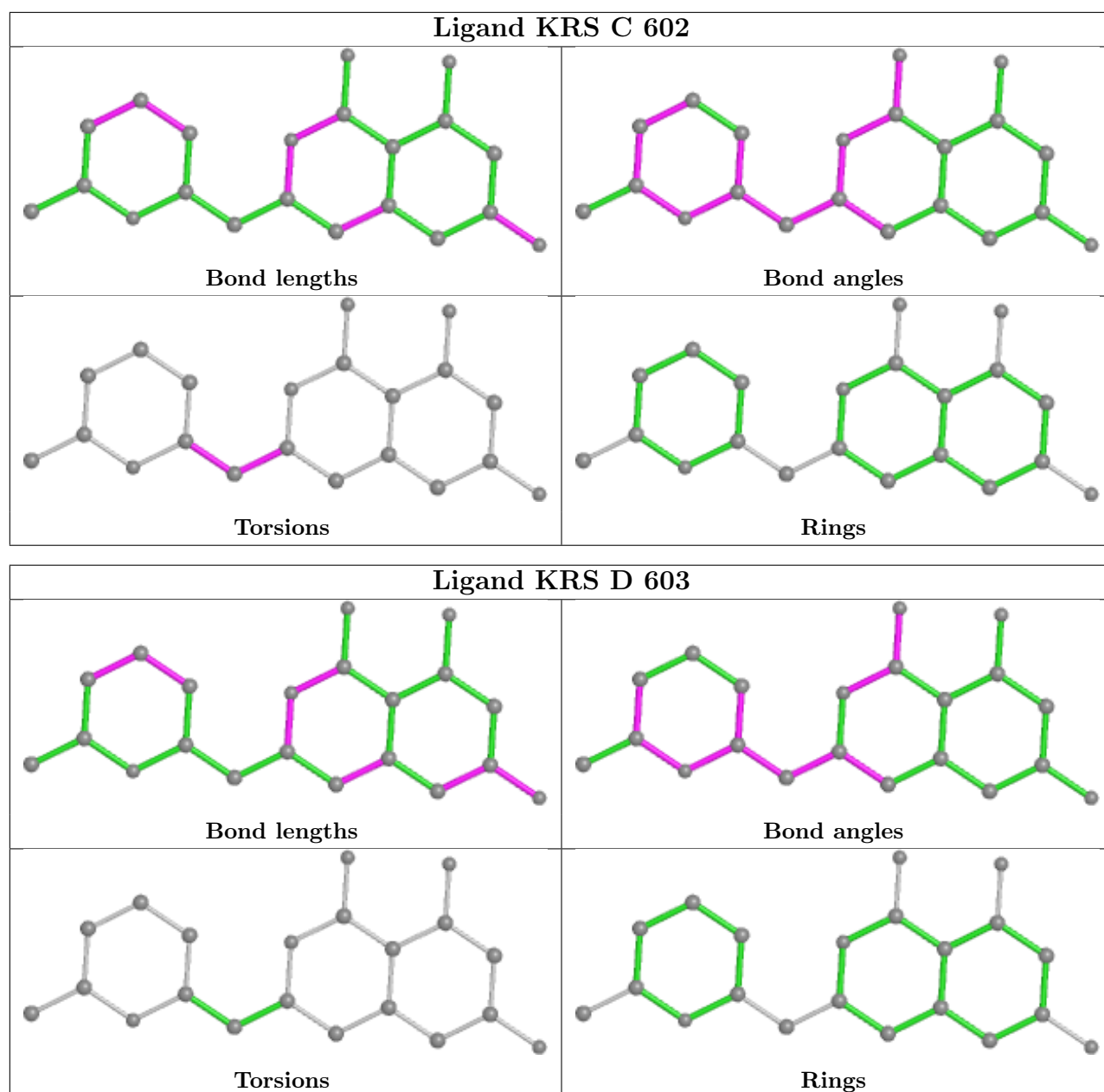
There are no ring outliers.

6 monomers are involved in 13 short contacts:

Mol	Chain	Res	Type	Clashes	Symm-Clashes
2	C	601	LYS	2	0
3	A	602	KRS	1	0
3	B	602	KRS	4	0
2	B	601	LYS	1	0
3	C	602	KRS	5	0
3	D	603	KRS	1	0

The following is a two-dimensional graphical depiction of Mogul quality analysis of bond lengths, bond angles, torsion angles, and ring geometry for all instances of the Ligand of Interest. In addition, ligands with molecular weight > 250 and outliers as shown on the validation Tables will also be included. For torsion angles, if less than 5% of the Mogul distribution of torsion angles is within 10 degrees of the torsion angle in question, then that torsion angle is considered an outlier. Any bond that is central to one or more torsion angles identified as an outlier by Mogul will be highlighted in the graph. For rings, the root-mean-square deviation (RMSD) between the ring in question and similar rings identified by Mogul is calculated over all ring torsion angles. If the average RMSD is greater than 60 degrees and the minimal RMSD between the ring in question and any Mogul-identified rings is also greater than 60 degrees, then that ring is considered an outlier. The outliers are highlighted in purple. The color gray indicates Mogul did not find sufficient equivalents in the CSD to analyse the geometry.





5.7 Other polymers [i](#)

There are no such residues in this entry.

5.8 Polymer linkage issues [i](#)

There are no chain breaks in this entry.

6 Fit of model and data

6.1 Protein, DNA and RNA chains

In the following table, the column labelled ‘#RSRZ > 2’ contains the number (and percentage) of RSRZ outliers, followed by percent RSRZ outliers for the chain as percentile scores relative to all X-ray entries and entries of similar resolution. The OWAB column contains the minimum, median, 95th percentile and maximum values of the occupancy-weighted average B-factor per residue. The column labelled ‘Q < 0.9’ lists the number of (and percentage) of residues with an average occupancy less than 0.9.

Mol	Chain	Analysed	<RSRZ>	#RSRZ>2	OWAB(Å ²)	Q<0.9
1	A	465/524 (88%)	0.03	7 (1%) 73 71	22, 39, 71, 100	0
1	B	482/524 (91%)	0.08	7 (1%) 73 71	23, 43, 74, 103	0
1	C	473/524 (90%)	0.02	3 (0%) 89 90	27, 39, 68, 86	0
1	D	470/524 (89%)	0.04	4 (0%) 84 84	25, 38, 70, 97	0
All	All	1890/2096 (90%)	0.04	21 (1%) 80 80	22, 40, 71, 103	0

All (21) RSRZ outliers are listed below:

Mol	Chain	Res	Type	RSRZ
1	A	310	ILE	5.5
1	A	309	GLY	3.9
1	D	310	ILE	3.8
1	D	209	GLY	2.8
1	C	151	GLY	2.8
1	A	100	ALA	2.8
1	B	361	VAL	2.8
1	A	370	PRO	2.6
1	D	208	GLY	2.4
1	B	312	GLU	2.4
1	A	445	PHE	2.3
1	B	506	MET	2.3
1	A	380	LEU	2.2
1	C	224	MET	2.2
1	B	218	HIS	2.1
1	A	358	LYS	2.1
1	B	224	MET	2.1
1	B	209	GLY	2.1
1	D	347	LEU	2.0
1	B	446	ASP	2.0
1	C	355	PHE	2.0

6.2 Non-standard residues in protein, DNA, RNA chains [i](#)

There are no non-standard protein/DNA/RNA residues in this entry.

6.3 Carbohydrates [i](#)

There are no monosaccharides in this entry.

6.4 Ligands [i](#)

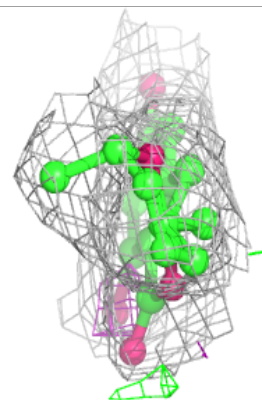
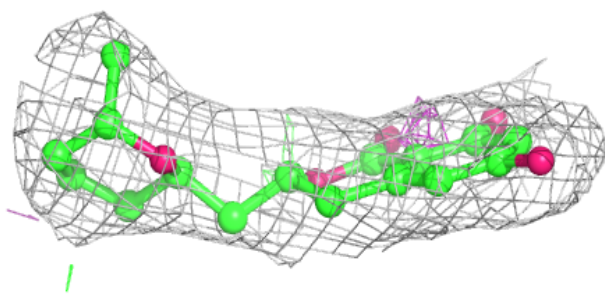
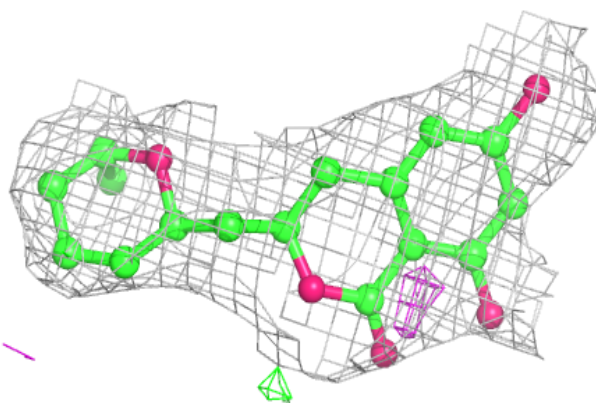
In the following table, the Atoms column lists the number of modelled atoms in the group and the number defined in the chemical component dictionary. The B-factors column lists the minimum, median, 95th percentile and maximum values of B factors of atoms in the group. The column labelled 'Q< 0.9' lists the number of atoms with occupancy less than 0.9.

Mol	Type	Chain	Res	Atoms	RSCC	RSR	B-factors(Å ²)	Q<0.9
2	LYS	C	601	10/10	0.76	0.38	44,53,60,62	0
2	LYS	D	602	10/10	0.83	0.32	30,51,66,72	0
2	LYS	B	601	10/10	0.84	0.33	34,37,44,44	0
3	KRS	C	602	21/21	0.88	0.25	19,30,41,43	0
4	GOL	D	601	6/6	0.88	0.27	38,40,41,46	0
2	LYS	A	601	10/10	0.91	0.23	25,30,46,48	0
3	KRS	A	602	21/21	0.93	0.18	10,19,37,44	0
3	KRS	D	603	21/21	0.94	0.18	11,22,29,33	0
3	KRS	B	602	21/21	0.94	0.18	23,29,34,43	0

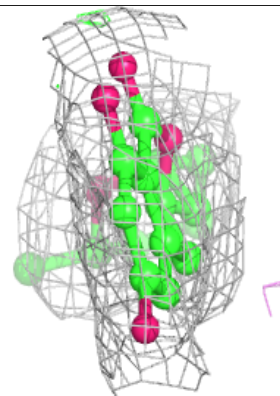
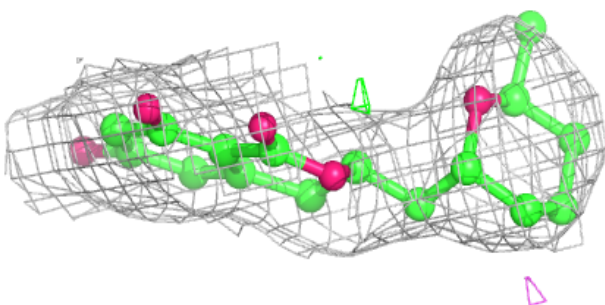
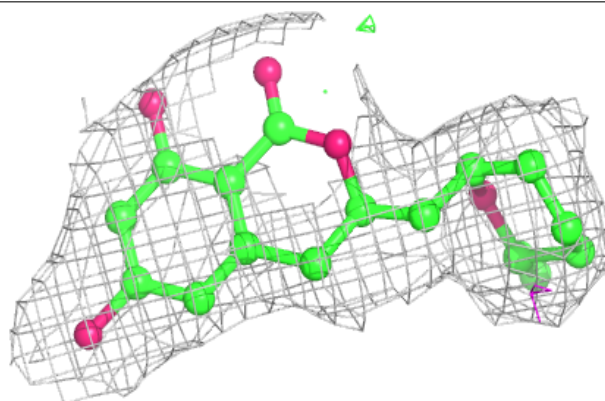
The following is a graphical depiction of the model fit to experimental electron density of all instances of the Ligand of Interest. In addition, ligands with molecular weight > 250 and outliers as shown on the geometry validation Tables will also be included. Each fit is shown from different orientation to approximate a three-dimensional view.

Electron density around KRS C 602:

$2mF_o-DF_c$ (at 0.7 rmsd) in gray
 mF_o-DF_c (at 3 rmsd) in purple (negative)
and green (positive)

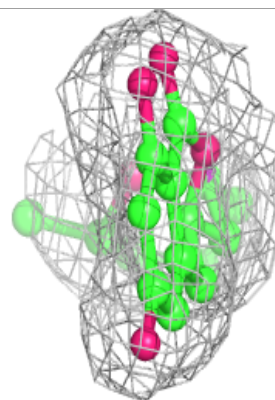
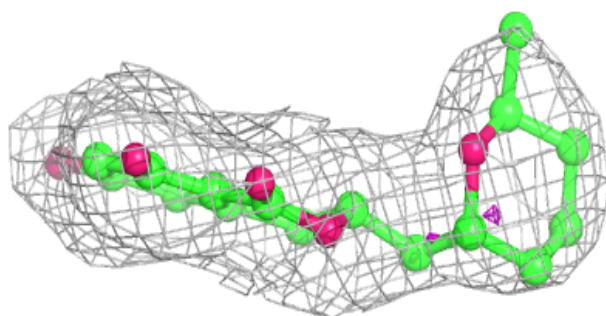
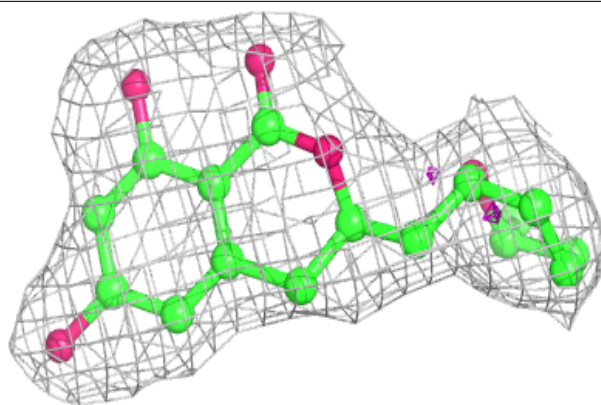
**Electron density around KRS A 602:**

$2mF_o-DF_c$ (at 0.7 rmsd) in gray
 mF_o-DF_c (at 3 rmsd) in purple (negative)
and green (positive)

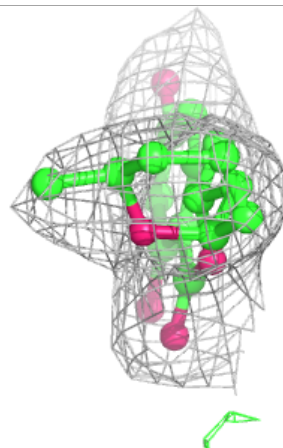
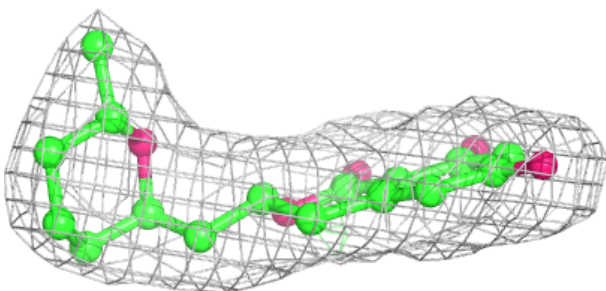
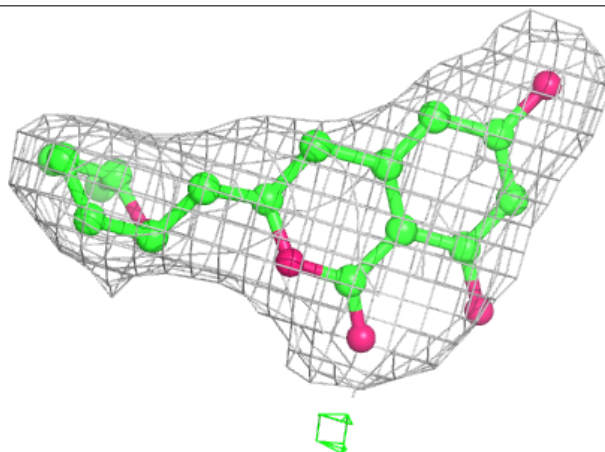


Electron density around KRS D 603:

$2mF_o-DF_c$ (at 0.7 rmsd) in gray
 mF_o-DF_c (at 3 rmsd) in purple (negative)
and green (positive)

**Electron density around KRS B 602:**

$2mF_o-DF_c$ (at 0.7 rmsd) in gray
 mF_o-DF_c (at 3 rmsd) in purple (negative)
and green (positive)



6.5 Other polymers [i](#)

There are no such residues in this entry.