



Full wwPDB X-ray Structure Validation Report ⓘ

Jan 7, 2024 – 05:07 am GMT

PDB ID : 6HDB
Title : Crystal structure of the potassium channel MtTMEM175 with zinc
Authors : Brunner, J.D.; Jakob, R.P.; Schulze, T.; Neldner, Y.; Moroni, A.; Thiel, G.;
Maier, T.; Schenck, S.
Deposited on : 2018-08-17
Resolution : 2.90 Å(reported)

This is a Full wwPDB X-ray Structure Validation Report for a publicly released PDB entry.

We welcome your comments at validation@mail.wwpdb.org

A user guide is available at

<https://www.wwpdb.org/validation/2017/XrayValidationReportHelp>

with specific help available everywhere you see the ⓘ symbol.

The types of validation reports are described at

<http://www.wwpdb.org/validation/2017/FAQs#types>.

The following versions of software and data (see [references ⓘ](#)) were used in the production of this report:

MolProbity : 4.02b-467
Mogul : 1.8.4, CSD as541be (2020)
Xtriage (Phenix) : 1.13
EDS : 2.36
buster-report : 1.1.7 (2018)
Percentile statistics : 20191225.v01 (using entries in the PDB archive December 25th 2019)
Refmac : 5.8.0158
CCP4 : 7.0.044 (Gargrove)
Ideal geometry (proteins) : Engh & Huber (2001)
Ideal geometry (DNA, RNA) : Parkinson et al. (1996)
Validation Pipeline (wwPDB-VP) : 2.36

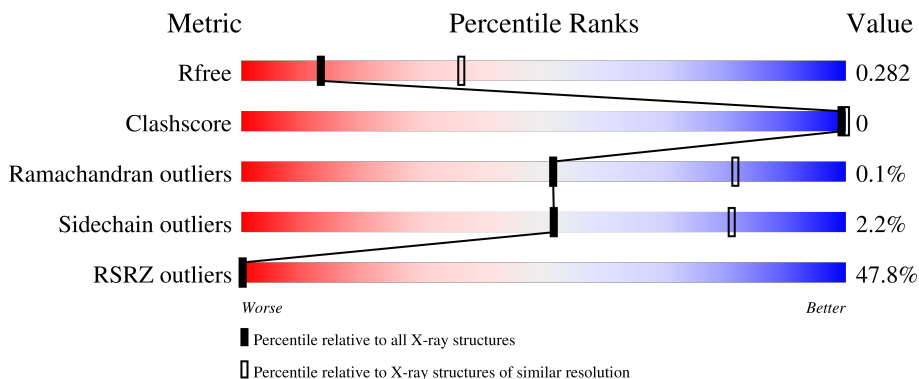
1 Overall quality at a glance

The following experimental techniques were used to determine the structure:

X-RAY DIFFRACTION

The reported resolution of this entry is 2.90 Å.

Percentile scores (ranging between 0-100) for global validation metrics of the entry are shown in the following graphic. The table shows the number of entries on which the scores are based.



Metric	Whole archive (#Entries)	Similar resolution (#Entries, resolution range(Å))
R_{free}	130704	1957 (2.90-2.90)
Clashscore	141614	2172 (2.90-2.90)
Ramachandran outliers	138981	2115 (2.90-2.90)
Sidechain outliers	138945	2117 (2.90-2.90)
RSRZ outliers	127900	1906 (2.90-2.90)

The table below summarises the geometric issues observed across the polymeric chains and their fit to the electron density. The red, orange, yellow and green segments of the lower bar indicate the fraction of residues that contain outliers for ≥ 3 , 2, 1 and 0 types of geometric quality criteria respectively. A grey segment represents the fraction of residues that are not modelled. The numeric value for each fraction is indicated below the corresponding segment, with a dot representing fractions $\leq 5\%$. The upper red bar (where present) indicates the fraction of residues that have poor fit to the electron density. The numeric value is given above the bar.

Mol	Chain	Length	Quality of chain
1	A	486	
2	B	255	
3	C	2	

The following table lists non-polymeric compounds, carbohydrate monomers and non-standard residues in protein, DNA, RNA chains that are outliers for geometric or electron-density-fit criteria:

Mol	Type	Chain	Res	Chirality	Geometry	Clashes	Electron density
5	K	B	502	-	-	-	X
5	K	B	503	-	-	-	X
6	ZN	B	504	-	-	-	X

2 Entry composition

There are 7 unique types of molecules in this entry. The entry contains 11081 atoms, of which 5543 are hydrogens and 0 are deuteriums.

In the tables below, the ZeroOcc column contains the number of atoms modelled with zero occupancy, the AltConf column contains the number of residues with at least one atom in alternate conformation and the Trace column contains the number of residues modelled with at most 2 atoms.

- Molecule 1 is a protein called Nanobody,Maltose/maltodextrin-binding periplasmic protein.

Mol	Chain	Residues	Atoms						ZeroOcc	AltConf	Trace
			Total	C	H	N	O	S			
1	A	461	7098	2288	3526	594	680	10	0	0	0

There are 3 discrepancies between the modelled and reference sequences:

Chain	Residue	Modelled	Actual	Comment	Reference
A	484	PRO	-	expression tag	UNP P0AEX9
A	485	GLY	-	expression tag	UNP P0AEX9
A	486	ALA	-	expression tag	UNP P0AEX9

- Molecule 2 is a protein called TMEM175.

Mol	Chain	Residues	Atoms						ZeroOcc	AltConf	Trace
			Total	C	H	N	O	S			
2	B	232	3854	1278	1963	287	318	8	0	0	0

There are 9 discrepancies between the modelled and reference sequences:

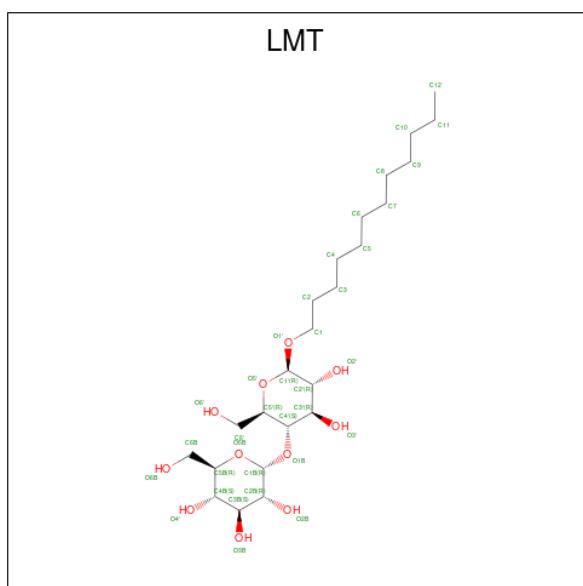
Chain	Residue	Modelled	Actual	Comment	Reference
B	0	MET	-	initiating methionine	UNP E4TN31
B	1	SER	-	expression tag	UNP E4TN31
B	248	ALA	-	expression tag	UNP E4TN31
B	249	LEU	-	expression tag	UNP E4TN31
B	250	GLU	-	expression tag	UNP E4TN31
B	251	VAL	-	expression tag	UNP E4TN31
B	252	LEU	-	expression tag	UNP E4TN31
B	253	PHE	-	expression tag	UNP E4TN31
B	254	GLN	-	expression tag	UNP E4TN31

- Molecule 3 is an oligosaccharide called alpha-D-glucopyranose-(1-4)-alpha-D-glucopyranose.



Mol	Chain	Residues	Atoms			ZeroOcc	AltConf	Trace	
			Total	C	H				O
3	C	2	44	12	21	11	0	0	0

- Molecule 4 is DODECYL-BETA-D-MALTOSE (three-letter code: LMT) (formula: $C_{24}H_{46}O_{11}$).



Mol	Chain	Residues	Atoms			ZeroOcc	AltConf	
			Total	C	H			O
4	B	1	63	19	33	11	0	0

- Molecule 5 is POTASSIUM ION (three-letter code: K) (formula: K).

Mol	Chain	Residues	Atoms		ZeroOcc	AltConf
			Total	K		
5	B	2	2	2	0	0

- Molecule 6 is ZINC ION (three-letter code: ZN) (formula: Zn).

Mol	Chain	Residues	Atoms		ZeroOcc	AltConf
			Total	Zn		
6	B	1	1	1	0	0

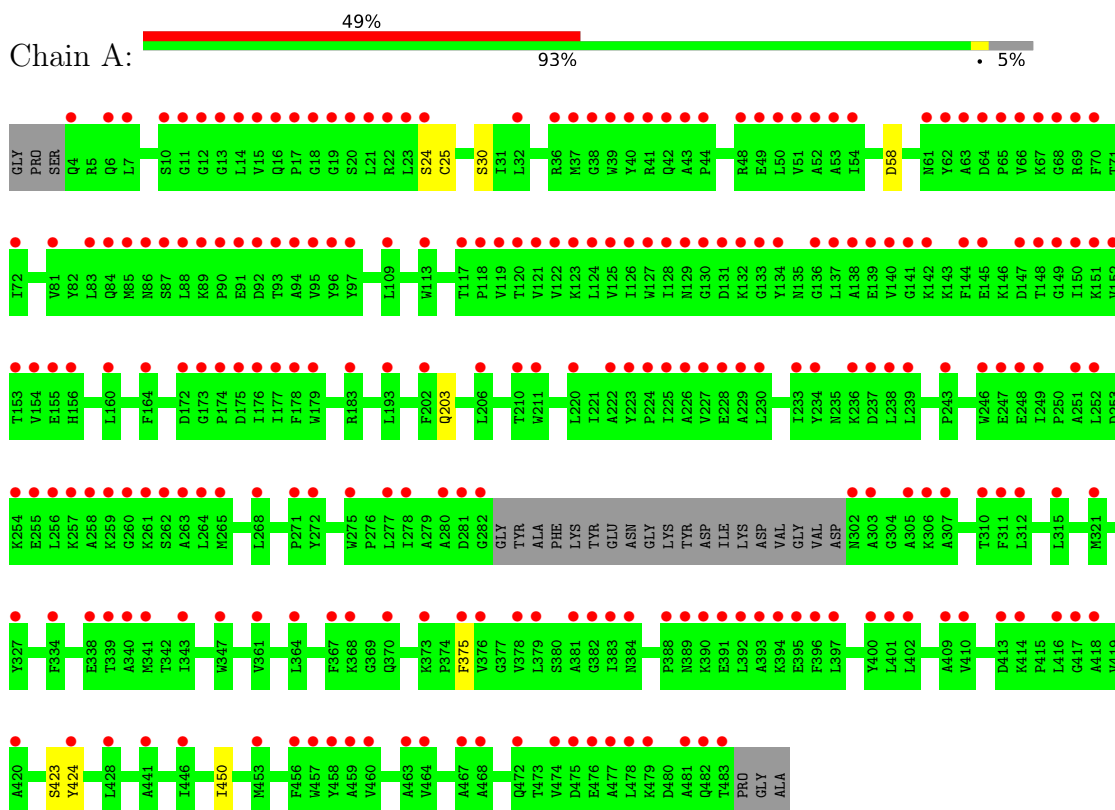
- Molecule 7 is water.

Mol	Chain	Residues	Atoms	ZeroOcc	AltConf
7	A	13	Total O 13 13	0	0
7	B	6	Total O 6 6	0	0

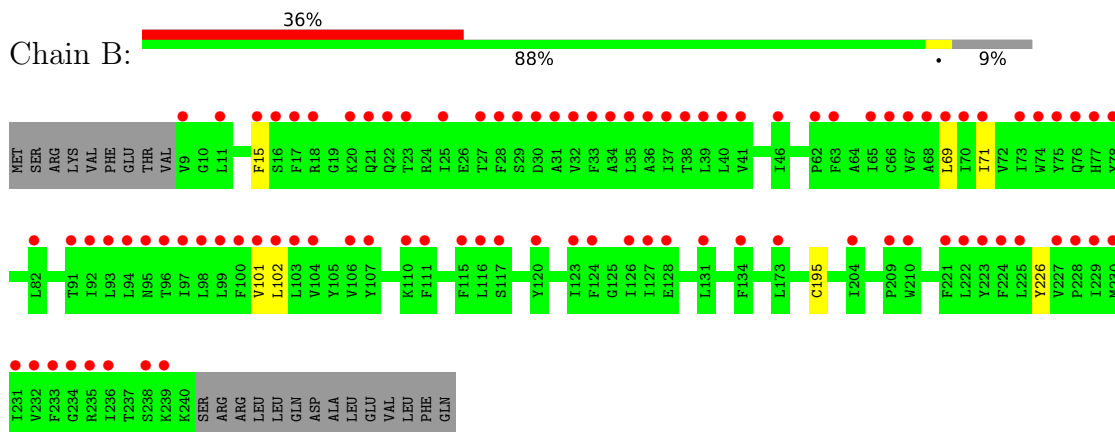
3 Residue-property plots [i](#)

These plots are drawn for all protein, RNA, DNA and oligosaccharide chains in the entry. The first graphic for a chain summarises the proportions of the various outlier classes displayed in the second graphic. The second graphic shows the sequence view annotated by issues in geometry and electron density. Residues are color-coded according to the number of geometric quality criteria for which they contain at least one outlier: green = 0, yellow = 1, orange = 2 and red = 3 or more. A red dot above a residue indicates a poor fit to the electron density ($RSRZ > 2$). Stretches of 2 or more consecutive residues without any outlier are shown as a green connector. Residues present in the sample, but not in the model, are shown in grey.

- Molecule 1: Nanobody,Maltose/maltodextrin-binding periplasmic protein



- Molecule 2: TMEM175



- Molecule 3: alpha-D-glucopyranose-(1-4)-alpha-D-glucopyranose

Chain C:  100%

GLC1
GLC2

4 Data and refinement statistics i

Property	Value	Source
Space group	P 4 21 2	Depositor
Cell constants a, b, c, α , β , γ	131.92Å 131.92Å 132.79Å 90.00° 90.00° 90.00°	Depositor
Resolution (Å)	44.10 – 2.90 46.64 – 2.90	Depositor EDS
% Data completeness (in resolution range)	99.9 (44.10-2.90) 99.9 (46.64-2.90)	Depositor EDS
R_{merge}	(Not available)	Depositor
R_{sym}	(Not available)	Depositor
$\langle I/\sigma(I) \rangle$ ¹	1.44 (at 2.91Å)	Xtriage
Refinement program	BUSTER 2.10.3	Depositor
R, R_{free}	0.275 , 0.286 0.264 , 0.282	Depositor DCC
R_{free} test set	2126 reflections (8.00%)	wwPDB-VP
Wilson B-factor (Å ²)	119.8	Xtriage
Anisotropy	0.439	Xtriage
Bulk solvent k_{sol} (e/Å ³), B_{sol} (Å ²)	0.36 , 114.3	EDS
L-test for twinning ²	$\langle L \rangle = 0.46$, $\langle L^2 \rangle = 0.29$	Xtriage
Estimated twinning fraction	0.005 for -h,l,k 0.000 for -l,-k,-h	Xtriage
F_o, F_c correlation	0.85	EDS
Total number of atoms	11081	wwPDB-VP
Average B, all atoms (Å ²)	162.0	wwPDB-VP

Xtriage's analysis on translational NCS is as follows: *The largest off-origin peak in the Patterson function is 4.10% of the height of the origin peak. No significant pseudotranslation is detected.*

¹Intensities estimated from amplitudes.

²Theoretical values of $\langle |L| \rangle$, $\langle L^2 \rangle$ for acentric reflections are 0.5, 0.333 respectively for untwinned datasets, and 0.375, 0.2 for perfectly twinned datasets.

5 Model quality

5.1 Standard geometry

Bond lengths and bond angles in the following residue types are not validated in this section: LMT, GLC, ZN, K

The Z score for a bond length (or angle) is the number of standard deviations the observed value is removed from the expected value. A bond length (or angle) with $|Z| > 5$ is considered an outlier worth inspection. RMSZ is the root-mean-square of all Z scores of the bond lengths (or angles).

Mol	Chain	Bond lengths		Bond angles	
		RMSZ	# Z >5	RMSZ	# Z >5
1	A	0.38	0/3658	0.54	0/4968
2	B	0.49	0/1941	0.59	0/2637
All	All	0.42	0/5599	0.56	0/7605

There are no bond length outliers.

There are no bond angle outliers.

There are no chirality outliers.

There are no planarity outliers.

5.2 Too-close contacts

In the following table, the Non-H and H(model) columns list the number of non-hydrogen atoms and hydrogen atoms in the chain respectively. The H(added) column lists the number of hydrogen atoms added and optimized by MolProbity. The Clashes column lists the number of clashes within the asymmetric unit, whereas Symm-Clashes lists symmetry-related clashes.

Mol	Chain	Non-H	H(model)	H(added)	Clashes	Symm-Clashes
1	A	3572	3526	3526	0	0
2	B	1891	1963	1963	1	0
3	C	23	21	21	0	0
4	B	30	33	33	0	0
5	B	2	0	0	0	0
6	B	1	0	0	0	0
7	A	13	0	0	0	0
7	B	6	0	0	0	0
All	All	5538	5543	5543	1	0

The all-atom clashscore is defined as the number of clashes found per 1000 atoms (including hydrogen atoms). The all-atom clashscore for this structure is 0.

All (1) close contacts within the same asymmetric unit are listed below, sorted by their clash magnitude.

Atom-1	Atom-2	Interatomic distance (Å)	Clash overlap (Å)
2:B:101:VAL:O	2:B:102:LEU:C	2.58	0.42

There are no symmetry-related clashes.

5.3 Torsion angles [i](#)

5.3.1 Protein backbone [i](#)

In the following table, the Percentiles column shows the percent Ramachandran outliers of the chain as a percentile score with respect to all X-ray entries followed by that with respect to entries of similar resolution.

The Analysed column shows the number of residues for which the backbone conformation was analysed, and the total number of residues.

Mol	Chain	Analysed	Favoured	Allowed	Outliers	Percentiles	
1	A	457/486 (94%)	436 (95%)	20 (4%)	1 (0%)	47	78
2	B	230/255 (90%)	219 (95%)	11 (5%)	0	100	100
All	All	687/741 (93%)	655 (95%)	31 (4%)	1 (0%)	51	82

All (1) Ramachandran outliers are listed below:

Mol	Chain	Res	Type
1	A	450	ILE

5.3.2 Protein sidechains [i](#)

In the following table, the Percentiles column shows the percent sidechain outliers of the chain as a percentile score with respect to all X-ray entries followed by that with respect to entries of similar resolution.

The Analysed column shows the number of residues for which the sidechain conformation was analysed, and the total number of residues.

Mol	Chain	Analysed	Rotameric	Outliers	Percentiles	
1	A	371/389 (95%)	363 (98%)	8 (2%)	52	81
2	B	209/231 (90%)	204 (98%)	5 (2%)	49	79

Continued on next page...

Continued from previous page...

Mol	Chain	Analysed	Rotameric	Outliers	Percentiles
All	All	580/620 (94%)	567 (98%)	13 (2%)	52 81

All (13) residues with a non-rotameric sidechain are listed below:

Mol	Chain	Res	Type
1	A	24	SER
1	A	25	CYS
1	A	30	SER
1	A	58	ASP
1	A	203	GLN
1	A	375	PHE
1	A	423	SER
1	A	424	TYR
2	B	15	PHE
2	B	69	LEU
2	B	71	ILE
2	B	195	CYS
2	B	226	TYR

Sometimes sidechains can be flipped to improve hydrogen bonding and reduce clashes. There are no such sidechains identified.

5.3.3 RNA [i](#)

There are no RNA molecules in this entry.

5.4 Non-standard residues in protein, DNA, RNA chains [i](#)

There are no non-standard protein/DNA/RNA residues in this entry.

5.5 Carbohydrates [i](#)

2 monosaccharides are modelled in this entry.

In the following table, the Counts columns list the number of bonds (or angles) for which Mogul statistics could be retrieved, the number of bonds (or angles) that are observed in the model and the number of bonds (or angles) that are defined in the Chemical Component Dictionary. The Link column lists molecule types, if any, to which the group is linked. The Z score for a bond length (or angle) is the number of standard deviations the observed value is removed from the expected value. A bond length (or angle) with $|Z| > 2$ is considered an outlier worth inspection. RMSZ is the root-mean-square of all Z scores of the bond lengths (or angles).

Mol	Type	Chain	Res	Link	Bond lengths			Bond angles		
					Counts	RMSZ	# Z > 2	Counts	RMSZ	# Z > 2
3	GLC	C	1	3	12,12,12	1.06	0	17,17,17	1.53	3 (17%)
3	GLC	C	2	3	11,11,12	1.73	2 (18%)	15,15,17	1.89	3 (20%)

In the following table, the Chirals column lists the number of chiral outliers, the number of chiral centers analysed, the number of these observed in the model and the number defined in the Chemical Component Dictionary. Similar counts are reported in the Torsion and Rings columns. '-' means no outliers of that kind were identified.

Mol	Type	Chain	Res	Link	Chirals	Torsions	Rings
3	GLC	C	1	3	-	0/2/22/22	0/1/1/1
3	GLC	C	2	3	-	0/2/19/22	0/1/1/1

All (2) bond length outliers are listed below:

Mol	Chain	Res	Type	Atoms	Z	Observed(Å)	Ideal(Å)
3	C	2	GLC	C2-C3	3.33	1.57	1.52
3	C	2	GLC	O5-C1	-2.50	1.39	1.43

All (6) bond angle outliers are listed below:

Mol	Chain	Res	Type	Atoms	Z	Observed(°)	Ideal(°)
3	C	2	GLC	C1-O5-C5	4.98	118.94	112.19
3	C	2	GLC	O3-C3-C4	-3.77	101.64	110.35
3	C	1	GLC	C1-O5-C5	2.94	119.22	113.66
3	C	1	GLC	C4-C3-C2	-2.47	106.51	110.82
3	C	2	GLC	O5-C5-C6	-2.38	103.47	107.20
3	C	1	GLC	O3-C3-C4	-2.12	105.45	110.35

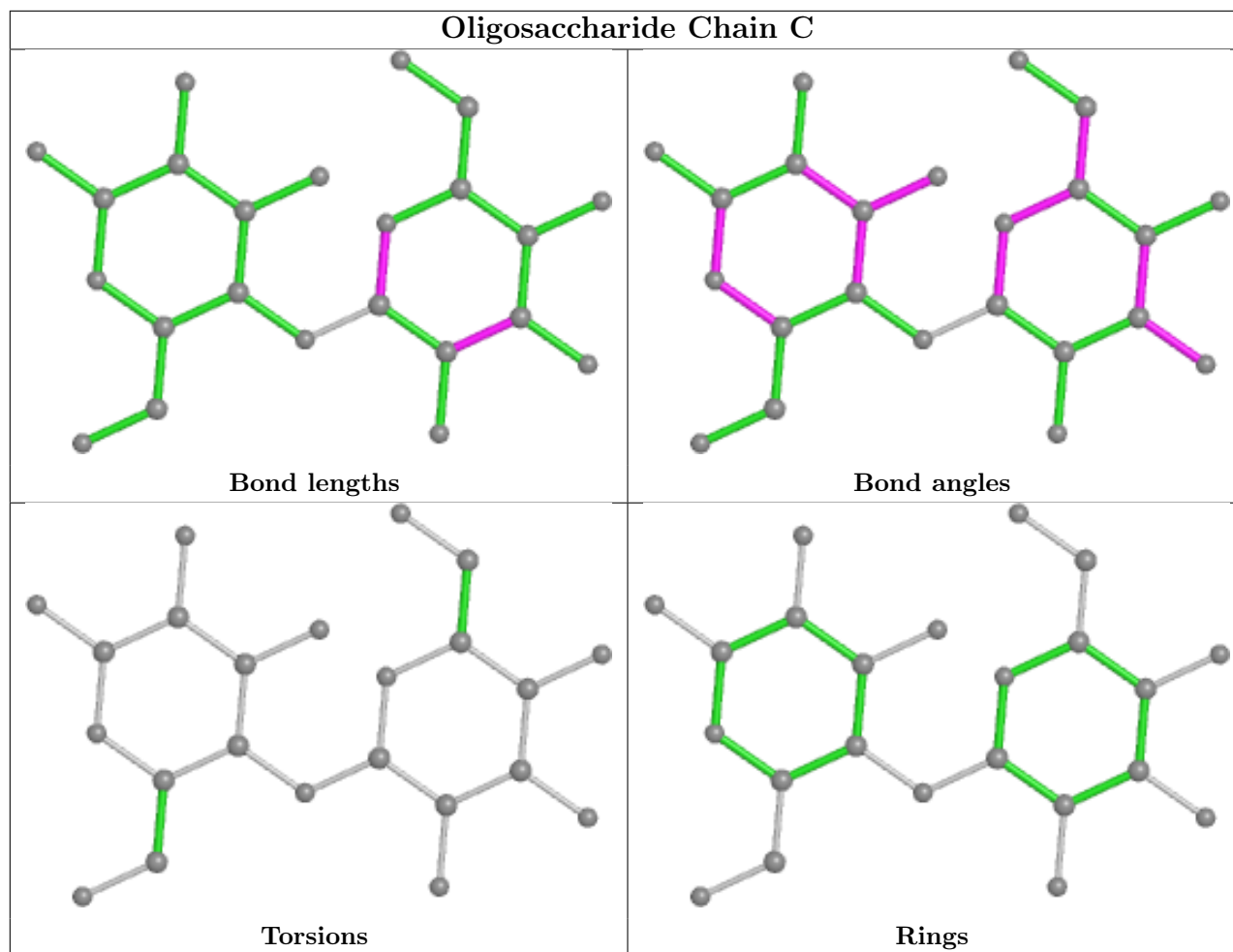
There are no chirality outliers.

There are no torsion outliers.

There are no ring outliers.

No monomer is involved in short contacts.

The following is a two-dimensional graphical depiction of Mogul quality analysis of bond lengths, bond angles, torsion angles, and ring geometry for oligosaccharide.



5.6 Ligand geometry [i](#)

Of 4 ligands modelled in this entry, 3 are monoatomic - leaving 1 for Mogul analysis.

In the following table, the Counts columns list the number of bonds (or angles) for which Mogul statistics could be retrieved, the number of bonds (or angles) that are observed in the model and the number of bonds (or angles) that are defined in the Chemical Component Dictionary. The Link column lists molecule types, if any, to which the group is linked. The Z score for a bond length (or angle) is the number of standard deviations the observed value is removed from the expected value. A bond length (or angle) with $|Z| > 2$ is considered an outlier worth inspection. RMSZ is the root-mean-square of all Z scores of the bond lengths (or angles).

Mol	Type	Chain	Res	Link	Bond lengths			Bond angles		
					Counts	RMSZ	$\# Z > 2$	Counts	RMSZ	$\# Z > 2$
4	LMT	B	501	-	31,31,36	1.31	5 (16%)	42,42,47	1.44	8 (19%)

In the following table, the Chirals column lists the number of chiral outliers, the number of chiral centers analysed, the number of these observed in the model and the number defined in the Chemical Component Dictionary. Similar counts are reported in the Torsion and Rings columns.

'-' means no outliers of that kind were identified.

Mol	Type	Chain	Res	Link	Chirals	Torsions	Rings
4	LMT	B	501	-	-	4/16/56/61	0/2/2/2

All (5) bond length outliers are listed below:

Mol	Chain	Res	Type	Atoms	Z	Observed(Å)	Ideal(Å)
4	B	501	LMT	C3B-C2B	2.45	1.58	1.52
4	B	501	LMT	C1B-C2B	2.42	1.59	1.52
4	B	501	LMT	C4B-C3B	2.27	1.58	1.52
4	B	501	LMT	C4'-C5'	2.16	1.58	1.52
4	B	501	LMT	C4B-C5B	2.14	1.57	1.53

All (8) bond angle outliers are listed below:

Mol	Chain	Res	Type	Atoms	Z	Observed(°)	Ideal(°)
4	B	501	LMT	O3B-C3B-C4B	-3.52	102.21	110.35
4	B	501	LMT	C1B-O5B-C5B	2.86	119.31	113.69
4	B	501	LMT	O2B-C2B-C3B	-2.82	103.82	110.35
4	B	501	LMT	C1'-C2'-C3'	-2.68	104.42	110.00
4	B	501	LMT	O5'-C1'-C2'	-2.47	105.11	110.35
4	B	501	LMT	O5B-C1B-C2B	2.43	115.50	110.35
4	B	501	LMT	C1B-C2B-C3B	2.19	114.56	110.00
4	B	501	LMT	O5'-C5'-C6'	-2.01	101.44	106.44

There are no chirality outliers.

All (4) torsion outliers are listed below:

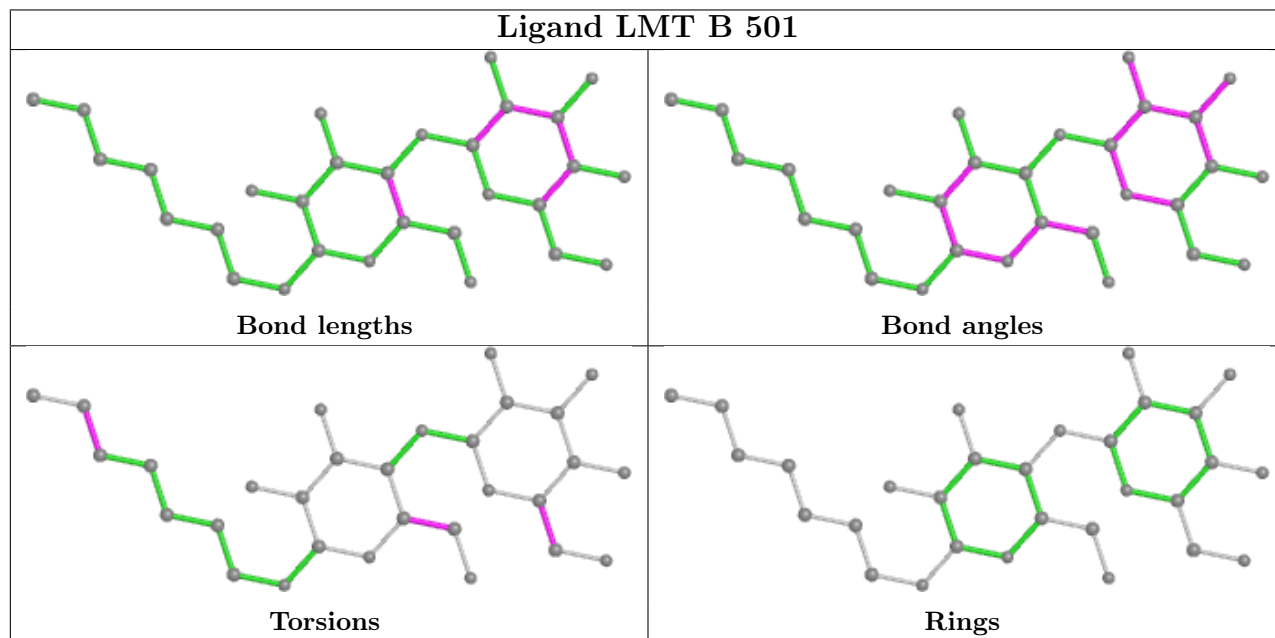
Mol	Chain	Res	Type	Atoms
4	B	501	LMT	O5'-C5'-C6'-O6'
4	B	501	LMT	C4'-C5'-C6'-O6'
4	B	501	LMT	O5B-C5B-C6B-O6B
4	B	501	LMT	C4-C5-C6-C7

There are no ring outliers.

No monomer is involved in short contacts.

The following is a two-dimensional graphical depiction of Mogul quality analysis of bond lengths, bond angles, torsion angles, and ring geometry for all instances of the Ligand of Interest. In addition, ligands with molecular weight > 250 and outliers as shown on the validation Tables will also be included. For torsion angles, if less than 5% of the Mogul distribution of torsion angles is within 10 degrees of the torsion angle in question, then that torsion angle is considered an outlier. Any bond that is central to one or more torsion angles identified as an outlier by Mogul will be

highlighted in the graph. For rings, the root-mean-square deviation (RMSD) between the ring in question and similar rings identified by Mogul is calculated over all ring torsion angles. If the average RMSD is greater than 60 degrees and the minimal RMSD between the ring in question and any Mogul-identified rings is also greater than 60 degrees, then that ring is considered an outlier. The outliers are highlighted in purple. The color gray indicates Mogul did not find sufficient equivalents in the CSD to analyse the geometry.



5.7 Other polymers [i](#)

There are no such residues in this entry.

5.8 Polymer linkage issues [i](#)

There are no chain breaks in this entry.

6 Fit of model and data

6.1 Protein, DNA and RNA chains

In the following table, the column labelled ‘#RSRZ > 2’ contains the number (and percentage) of RSRZ outliers, followed by percent RSRZ outliers for the chain as percentile scores relative to all X-ray entries and entries of similar resolution. The OWAB column contains the minimum, median, 95th percentile and maximum values of the occupancy-weighted average B-factor per residue. The column labelled ‘Q < 0.9’ lists the number of (and percentage) of residues with an average occupancy less than 0.9.

Mol	Chain	Analysed	<RSRZ>	#RSRZ>2	OWAB(Å ²)	Q<0.9
1	A	461/486 (94%)	3.25	238 (51%) 0 0	120, 172, 218, 253	0
2	B	232/255 (90%)	1.80	93 (40%) 0 0	80, 134, 211, 238	0
All	All	693/741 (93%)	2.77	331 (47%) 0 0	80, 164, 216, 253	0

All (331) RSRZ outliers are listed below:

Mol	Chain	Res	Type	RSRZ
1	A	123	LYS	22.3
1	A	122	VAL	21.3
1	A	152	VAL	18.6
1	A	392	LEU	17.1
1	A	153	THR	15.9
1	A	17	PRO	15.8
1	A	175	ASP	15.4
1	A	151	LYS	15.1
1	A	124	LEU	15.1
1	A	125	VAL	14.9
1	A	70	PHE	14.8
1	A	88	LEU	14.6
1	A	86	ASN	14.4
1	A	154	VAL	14.2
1	A	18	GLY	14.1
1	A	20	SER	14.1
1	A	393	ALA	13.5
1	A	389	ASN	13.4
1	A	87	SER	13.2
1	A	21	LEU	12.9
1	A	69	ARG	12.9
1	A	127	TRP	12.9
1	A	85	MET	12.8
1	A	96	TYR	12.7

Continued on next page...

Continued from previous page...

Mol	Chain	Res	Type	RSRZ
1	A	176	ILE	12.3
1	A	16	GLN	12.2
1	A	174	PRO	11.9
1	A	11	GLY	11.7
1	A	173	GLY	10.8
1	A	282	GLY	10.7
1	A	383	ILE	10.6
1	A	90	PRO	10.6
1	A	150	ILE	10.6
1	A	121	VAL	10.5
1	A	23	LEU	10.3
1	A	382	GLY	10.2
1	A	126	ILE	10.0
1	A	19	GLY	10.0
1	A	92	ASP	9.8
1	A	15	VAL	9.8
1	A	119	VAL	9.4
1	A	41	ARG	9.4
1	A	133	GLY	9.2
1	A	396	PHE	9.0
1	A	89	LYS	9.0
1	A	148	THR	8.9
2	B	224	PHE	8.8
1	A	128	ILE	8.7
1	A	51	VAL	8.7
1	A	144	PHE	8.4
1	A	52	ALA	8.4
1	A	474	VAL	8.4
1	A	381	ALA	8.3
1	A	155	GLU	8.3
2	B	239	LYS	8.3
1	A	97	TYR	8.1
1	A	53	ALA	8.0
1	A	4	GLN	8.0
1	A	62	TYR	7.9
1	A	178	PHE	7.8
1	A	66	VAL	7.7
1	A	39	TRP	7.5
2	B	124	PHE	7.3
1	A	43	ALA	7.2
1	A	83	LEU	7.1
1	A	67	LYS	7.1

Continued on next page...

Continued from previous page...

Mol	Chain	Res	Type	RSRZ
1	A	478	LEU	7.0
1	A	223	TYR	6.9
2	B	235	ARG	6.8
1	A	468	ALA	6.8
2	B	21	GLN	6.7
1	A	91	GLU	6.7
1	A	416	LEU	6.6
1	A	13	GLY	6.6
1	A	61	ASN	6.6
1	A	22	ARG	6.6
2	B	229	ILE	6.6
1	A	384	ASN	6.5
1	A	258	ALA	6.5
2	B	17	PHE	6.4
1	A	120	THR	6.3
1	A	93	THR	6.2
1	A	137	LEU	6.2
1	A	479	LYS	6.1
1	A	44	PRO	6.1
1	A	464	VAL	6.0
1	A	14	LEU	6.0
1	A	481	ALA	6.0
1	A	397	LEU	6.0
2	B	238	SER	5.9
2	B	20	LYS	5.7
1	A	483	THR	5.7
1	A	368	LYS	5.7
1	A	12	GLY	5.7
1	A	476	GLU	5.6
2	B	233	PHE	5.5
1	A	259	LYS	5.5
2	B	236	ILE	5.5
1	A	456	PHE	5.4
1	A	172	ASP	5.4
1	A	140	VAL	5.3
2	B	223	TYR	5.2
1	A	68	GLY	5.2
1	A	84	GLN	5.1
1	A	311	PHE	5.0
1	A	134	TYR	5.0
1	A	149	GLY	5.0
1	A	49	GLU	5.0

Continued on next page...

Continued from previous page...

Mol	Chain	Res	Type	RSRZ
1	A	145	GLU	5.0
2	B	29	SER	4.9
1	A	275	TRP	4.9
1	A	129	ASN	4.8
1	A	238	LEU	4.8
1	A	256	LEU	4.8
1	A	388	PRO	4.8
1	A	460	VAL	4.7
1	A	64	ASP	4.7
1	A	225	ILE	4.6
1	A	264	LEU	4.6
1	A	118	PRO	4.6
1	A	177	ILE	4.5
1	A	130	GLY	4.5
2	B	134	PHE	4.5
1	A	302	ASN	4.4
1	A	139	GLU	4.4
1	A	252	LEU	4.4
1	A	10	SER	4.3
1	A	261	LYS	4.3
1	A	230	LEU	4.3
2	B	27	THR	4.3
1	A	95	VAL	4.3
1	A	278	ILE	4.3
1	A	338	GLU	4.2
1	A	246	TRP	4.2
2	B	31	ALA	4.2
2	B	9	VAL	4.2
1	A	138	ALA	4.2
1	A	94	ALA	4.1
1	A	482	GLN	4.1
1	A	391	GLU	4.1
1	A	367	PHE	4.1
1	A	117	THR	4.1
2	B	232	VAL	4.0
2	B	120	TYR	4.0
1	A	394	LYS	3.9
2	B	123	ILE	3.9
1	A	272	TYR	3.9
1	A	132	LYS	3.9
1	A	401	LEU	3.9
1	A	280	ALA	3.9

Continued on next page...

Continued from previous page...

Mol	Chain	Res	Type	RSRZ
1	A	458	TYR	3.8
2	B	126	ILE	3.8
1	A	321	MET	3.8
2	B	30	ASP	3.8
1	A	305	ALA	3.8
2	B	221	PHE	3.8
1	A	379	LEU	3.8
1	A	142	LYS	3.8
2	B	33	PHE	3.8
1	A	211	TRP	3.7
1	A	48	ARG	3.7
1	A	446	ILE	3.7
2	B	32	VAL	3.6
1	A	72	ILE	3.6
1	A	141	GLY	3.6
2	B	228	PRO	3.6
2	B	74	TRP	3.5
1	A	63	ALA	3.5
2	B	231	ILE	3.5
1	A	24	SER	3.5
2	B	128	GLU	3.5
1	A	339	THR	3.5
1	A	390	LYS	3.5
2	B	225	LEU	3.5
1	A	340	ALA	3.4
1	A	263	ALA	3.4
2	B	173	LEU	3.4
1	A	255	GLU	3.4
1	A	268	LEU	3.3
1	A	457	TRP	3.3
1	A	467	ALA	3.3
1	A	453	MET	3.3
2	B	40	LEU	3.3
2	B	38	THR	3.3
1	A	210	THR	3.3
1	A	395	GLU	3.3
1	A	65	PRO	3.3
1	A	312	LEU	3.3
1	A	40	TYR	3.3
1	A	237	ASP	3.2
1	A	400	TYR	3.2
1	A	37	MET	3.2

Continued on next page...

Continued from previous page...

Mol	Chain	Res	Type	RSRZ
1	A	160	LEU	3.2
1	A	251	ALA	3.2
1	A	224	PRO	3.2
1	A	409	ALA	3.2
1	A	327	TYR	3.2
2	B	69	LEU	3.2
2	B	34	ALA	3.1
2	B	78	TYR	3.1
1	A	265	MET	3.1
1	A	202	PHE	3.1
1	A	179	TRP	3.1
1	A	361	VAL	3.1
1	A	6	GLN	3.1
1	A	463	ALA	3.1
2	B	25	ILE	3.1
2	B	111	PHE	3.1
1	A	414	LYS	3.1
2	B	82	LEU	3.1
2	B	116	LEU	3.1
1	A	310	THR	3.1
2	B	95	ASN	3.0
1	A	410	VAL	3.0
2	B	96	THR	3.0
1	A	306	LYS	3.0
1	A	364	LEU	3.0
2	B	11	LEU	3.0
1	A	475	ASP	3.0
1	A	378	VAL	3.0
1	A	222	ALA	3.0
2	B	102	LEU	2.9
2	B	127	ILE	2.9
1	A	257	LYS	2.9
1	A	477	ALA	2.9
2	B	103	LEU	2.9
2	B	230	MET	2.9
2	B	62	PRO	2.9
1	A	254	LYS	2.9
2	B	209	PRO	2.9
2	B	37	ILE	2.9
2	B	28	PHE	2.9
1	A	343	ILE	2.9
1	A	109	LEU	2.9

Continued on next page...

Continued from previous page...

Mol	Chain	Res	Type	RSRZ
1	A	373	LYS	2.8
2	B	110	LYS	2.8
2	B	46	ILE	2.8
2	B	70	ILE	2.8
2	B	104	VAL	2.8
2	B	22	GLN	2.8
1	A	183	ARG	2.8
2	B	63	PHE	2.8
2	B	66	CYS	2.8
2	B	99	LEU	2.8
1	A	277	LEU	2.7
2	B	101	VAL	2.7
1	A	164	PHE	2.7
2	B	76	GLN	2.7
2	B	36	ALA	2.7
1	A	375	PHE	2.7
2	B	73	ILE	2.7
1	A	281	ASP	2.7
1	A	136	GLY	2.7
2	B	106	VAL	2.7
1	A	271	PRO	2.7
1	A	243	PRO	2.6
2	B	91	THR	2.6
1	A	206	LEU	2.6
1	A	229	ALA	2.6
1	A	113	TRP	2.6
1	A	228	GLU	2.6
1	A	307	ALA	2.5
2	B	98	LEU	2.5
1	A	81	VAL	2.5
2	B	93	LEU	2.5
2	B	131	LEU	2.5
1	A	147	ASP	2.5
1	A	459	ALA	2.5
1	A	236	LYS	2.5
1	A	418	ALA	2.4
1	A	193	LEU	2.4
1	A	220	LEU	2.4
2	B	210	TRP	2.4
2	B	222	LEU	2.4
2	B	234	GLY	2.4
1	A	303	ALA	2.4

Continued on next page...

Continued from previous page...

Mol	Chain	Res	Type	RSRZ
1	A	32	LEU	2.4
1	A	247	GLU	2.4
2	B	107	TYR	2.4
1	A	233	ILE	2.4
1	A	38	GLY	2.4
2	B	41	VAL	2.4
1	A	341	MET	2.4
1	A	156	HIS	2.3
1	A	248	GLU	2.3
1	A	42	GLN	2.3
2	B	23	THR	2.3
2	B	18	ARG	2.3
1	A	239	LEU	2.3
1	A	262	SER	2.3
1	A	50	LEU	2.3
2	B	65	ILE	2.3
2	B	115	PHE	2.3
1	A	347	TRP	2.3
2	B	67	VAL	2.3
2	B	35	LEU	2.3
2	B	92	ILE	2.3
2	B	100	PHE	2.3
1	A	441	ALA	2.3
2	B	68	ALA	2.3
1	A	424	TYR	2.3
1	A	7	LEU	2.2
1	A	420	ALA	2.2
1	A	227	VAL	2.2
1	A	260	GLY	2.2
1	A	472	GLN	2.2
1	A	413	ASP	2.2
2	B	39	LEU	2.2
2	B	71	ILE	2.2
2	B	204	ILE	2.2
1	A	428	LEU	2.2
1	A	54	ILE	2.2
2	B	97	ILE	2.2
2	B	227	VAL	2.2
1	A	402	LEU	2.1
2	B	77	HIS	2.1
1	A	249	ILE	2.1
2	B	117	SER	2.1

Continued on next page...

Continued from previous page...

Mol	Chain	Res	Type	RSRZ
2	B	94	LEU	2.1
1	A	36	ARG	2.1
1	A	131	ASP	2.1
1	A	417	GLY	2.1
1	A	234	TYR	2.1
1	A	315	LEU	2.1
1	A	334	PHE	2.1
2	B	75	TYR	2.1
1	A	376	VAL	2.1
1	A	226	ALA	2.0
2	B	16	SER	2.0
2	B	15	PHE	2.0
1	A	370	GLN	2.0

6.2 Non-standard residues in protein, DNA, RNA chains [i](#)

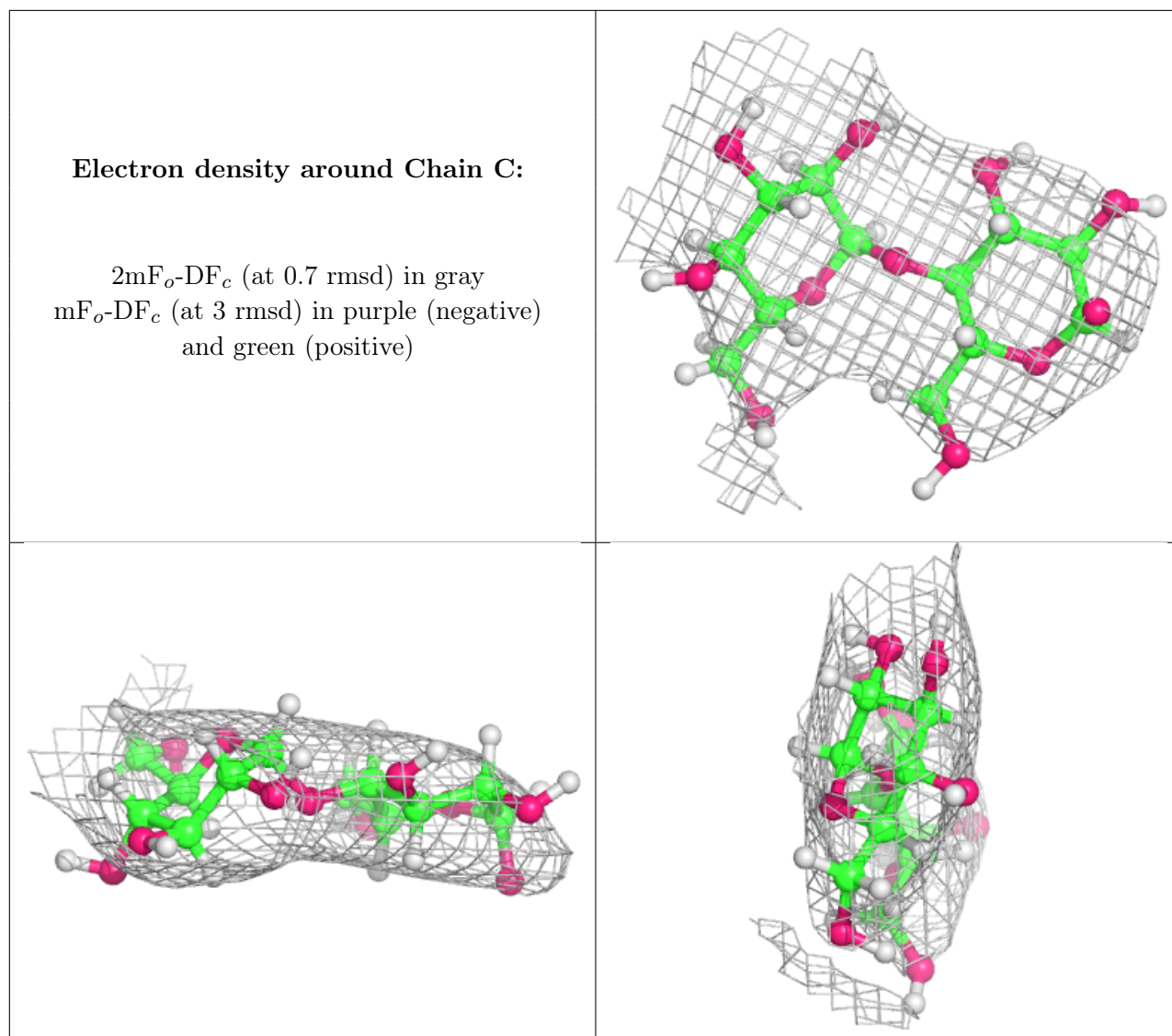
There are no non-standard protein/DNA/RNA residues in this entry.

6.3 Carbohydrates [i](#)

In the following table, the Atoms column lists the number of modelled atoms in the group and the number defined in the chemical component dictionary. The B-factors column lists the minimum, median, 95th percentile and maximum values of B factors of atoms in the group. The column labelled 'Q<0.9' lists the number of atoms with occupancy less than 0.9.

Mol	Type	Chain	Res	Atoms	RSCC	RSR	B-factors(Å ²)	Q<0.9
3	GLC	C	1	12/12	0.92	0.26	132,133,135,137	0
3	GLC	C	2	11/12	0.94	0.22	141,147,150,152	0

The following is a graphical depiction of the model fit to experimental electron density for oligosaccharide. Each fit is shown from different orientation to approximate a three-dimensional view.



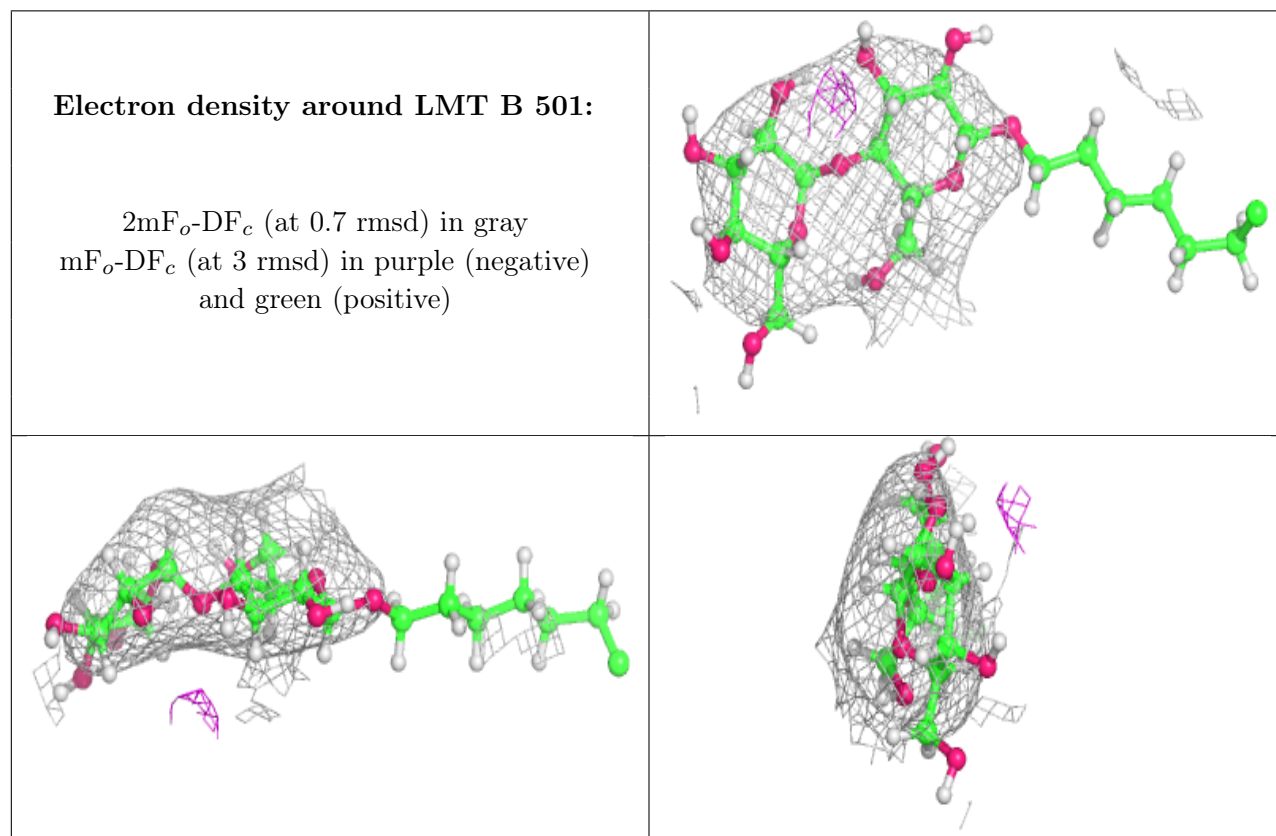
6.4 Ligands [i](#)

In the following table, the Atoms column lists the number of modelled atoms in the group and the number defined in the chemical component dictionary. The B-factors column lists the minimum, median, 95th percentile and maximum values of B factors of atoms in the group. The column labelled 'Q< 0.9' lists the number of atoms with occupancy less than 0.9.

Mol	Type	Chain	Res	Atoms	RSCC	RSR	B-factors(\AA^2)	Q<0.9
6	ZN	B	504	1/1	-0.91	0.51	109,109,109,109	1
5	K	B	502	1/1	-0.66	1.55	145,145,145,145	1
5	K	B	503	1/1	0.70	0.63	153,153,153,153	1
4	LMT	B	501	30/35	0.83	0.40	134,142,149,151	0

The following is a graphical depiction of the model fit to experimental electron density of all instances of the Ligand of Interest. In addition, ligands with molecular weight > 250 and outliers

as shown on the geometry validation Tables will also be included. Each fit is shown from different orientation to approximate a three-dimensional view.



6.5 Other polymers [i](#)

There are no such residues in this entry.