



Full wwPDB X-ray Structure Validation Report ⓘ

Jun 16, 2020 – 12:13 am BST

PDB ID : 6HCB
Title : STRUCTURE OF GLUA2 LIGAND-BINDING DOMAIN (S1S2J-N775S) IN COMPLEX WITH GLUTAMATE AND TDPAM01 AT 1.9 Å RESOLUTION.
Authors : Laulumaa, S.; Masternak, M.; Frydenvang, K.; Kastrup, J.S.
Deposited on : 2018-08-14
Resolution : 1.90 Å(reported)

This is a Full wwPDB X-ray Structure Validation Report for a publicly released PDB entry.

We welcome your comments at validation@mail.wwpdb.org

A user guide is available at

<https://www.wwpdb.org/validation/2017/XrayValidationReportHelp>

with specific help available everywhere you see the ⓘ symbol.

The following versions of software and data (see [references ⓘ](#)) were used in the production of this report:

MolProbity : 4.02b-467
Mogul : 1.8.5 (274361), CSD as541be (2020)
Xtriage (Phenix) : 1.13
EDS : 2.11
buster-report : 1.1.7 (2018)
Percentile statistics : 20191225.v01 (using entries in the PDB archive December 25th 2019)
Refmac : 5.8.0158
CCP4 : 7.0.044 (Gargrove)
Ideal geometry (proteins) : Engh & Huber (2001)
Ideal geometry (DNA, RNA) : Parkinson et al. (1996)
Validation Pipeline (wwPDB-VP) : 2.11

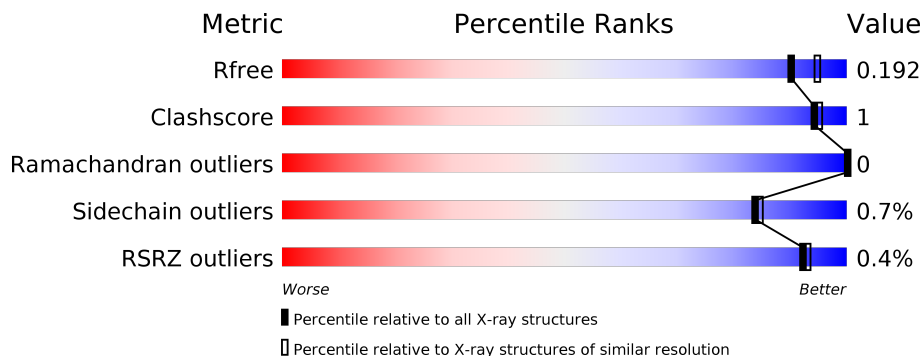
1 Overall quality at a glance

The following experimental techniques were used to determine the structure:

X-RAY DIFFRACTION

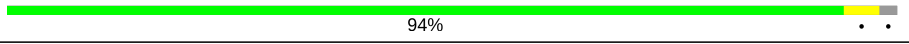
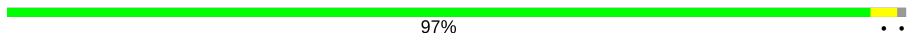
The reported resolution of this entry is 1.90 Å.

Percentile scores (ranging between 0-100) for global validation metrics of the entry are shown in the following graphic. The table shows the number of entries on which the scores are based.



Metric	Whole archive (#Entries)	Similar resolution (#Entries, resolution range(Å))
R_{free}	130704	6207 (1.90-1.90)
Clashscore	141614	6847 (1.90-1.90)
Ramachandran outliers	138981	6760 (1.90-1.90)
Sidechain outliers	138945	6760 (1.90-1.90)
RSRZ outliers	127900	6082 (1.90-1.90)

The table below summarises the geometric issues observed across the polymeric chains and their fit to the electron density. The red, orange, yellow and green segments on the lower bar indicate the fraction of residues that contain outliers for ≥ 3 , 2, 1 and 0 types of geometric quality criteria respectively. A grey segment represents the fraction of residues that are not modelled. The numeric value for each fraction is indicated below the corresponding segment, with a dot representing fractions $\leq 5\%$. The upper red bar (where present) indicates the fraction of residues that have poor fit to the electron density. The numeric value is given above the bar.

Mol	Chain	Length	Quality of chain
1	A	264	 94%
1	B	264	 97%

2 Entry composition

There are 8 unique types of molecules in this entry. The entry contains 8837 atoms, of which 4288 are hydrogens and 0 are deuteriums.

In the tables below, the ZeroOcc column contains the number of atoms modelled with zero occupancy, the AltConf column contains the number of residues with at least one atom in alternate conformation and the Trace column contains the number of residues modelled with at most 2 atoms.

- Molecule 1 is a protein called Glutamate receptor 2.

Mol	Chain	Residues	Atoms						ZeroOcc	AltConf	Trace
			Total	C	H	N	O	S			
1	A	259	4166	1313	2106	339	392	16	0	10	0
1	B	262	4147	1307	2095	340	390	15	0	4	0

There are 10 discrepancies between the modelled and reference sequences:

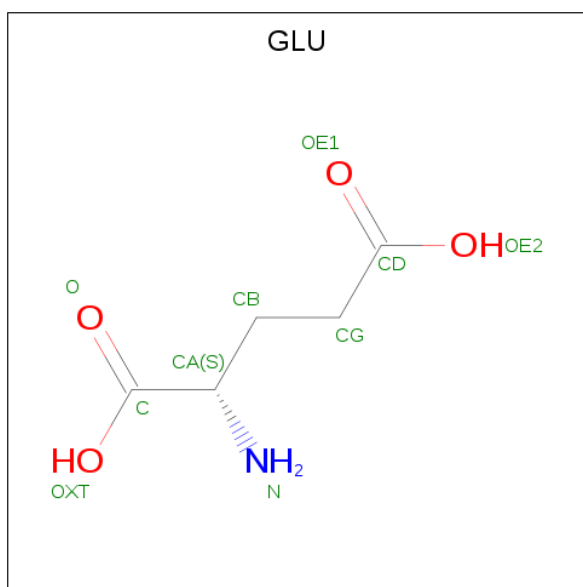
Chain	Residue	Modelled	Actual	Comment	Reference
A	1	GLY	-	expression tag	UNP P19491
A	2	ALA	-	expression tag	UNP P19491
A	118	GLY	-	linker	UNP P19491
A	119	THR	-	linker	UNP P19491
A	242	SER	ASN	engineered mutation	UNP P19491
B	1	GLY	-	expression tag	UNP P19491
B	2	ALA	-	expression tag	UNP P19491
B	118	GLY	-	linker	UNP P19491
B	119	THR	-	linker	UNP P19491
B	242	SER	ASN	engineered mutation	UNP P19491

- Molecule 2 is SULFATE ION (three-letter code: SO4) (formula: O₄S).



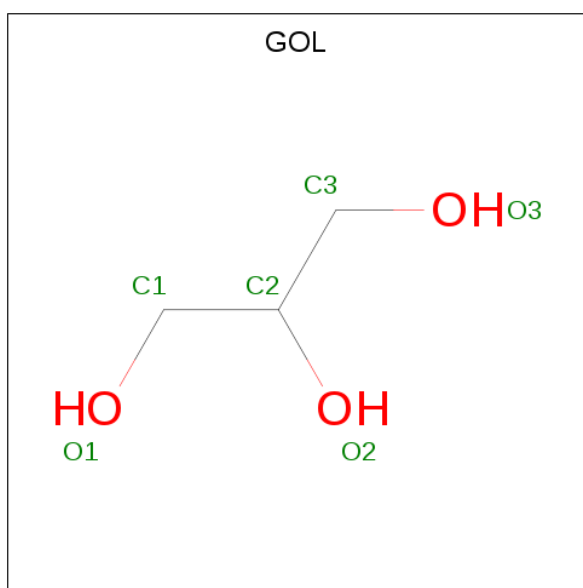
Mol	Chain	Residues	Atoms			ZeroOcc	AltConf
2	A	1	Total	O	S	0	0
			5	4	1		
2	A	1	Total	O	S	0	0
			5	4	1		
2	A	1	Total	O	S	0	0
			5	4	1		
2	A	1	Total	O	S	0	0
			5	4	1		
2	A	1	Total	O	S	0	0
			5	4	1		
2	B	1	Total	O	S	0	0
			5	4	1		
2	B	1	Total	O	S	0	0
			5	4	1		
2	B	1	Total	O	S	0	0
			5	4	1		

- Molecule 3 is GLUTAMIC ACID (three-letter code: GLU) (formula: C₅H₉NO₄).



Mol	Chain	Residues	Atoms				ZeroOcc	AltConf		
			Total	C	H	N			O	
3	A	1	Total	18	5	8	1	4	0	0
3	B	1	Total	15	5	5	1	4	0	0

- Molecule 4 is GLYCEROL (three-letter code: GOL) (formula: C₃H₈O₃).



Mol	Chain	Residues	Atoms			ZeroOcc	AltConf		
			Total	C	H			O	
4	A	1	Total	14	3	8	3	0	0
4	A	1	Total	14	3	8	3	0	0

Continued on next page...

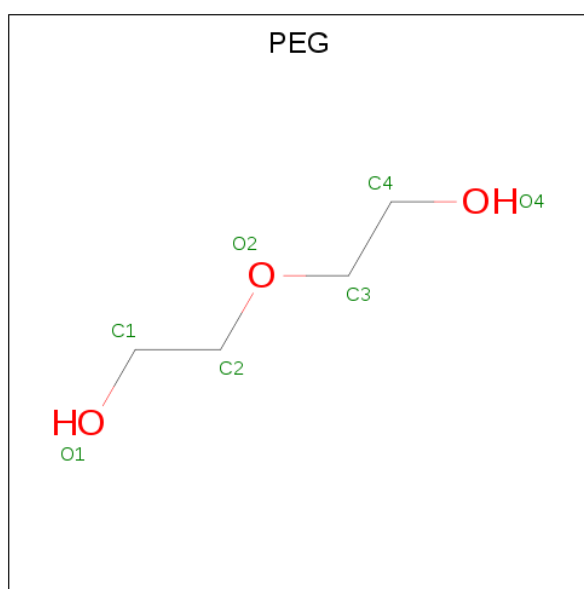
Continued from previous page...

Mol	Chain	Residues	Atoms				ZeroOcc	AltConf
4	B	1	Total	C	H	O	0	0
			14	3	8	3		
4	B	1	Total	C	H	O	0	0
			14	3	8	3		

- Molecule 5 is CHLORIDE ION (three-letter code: CL) (formula: Cl).

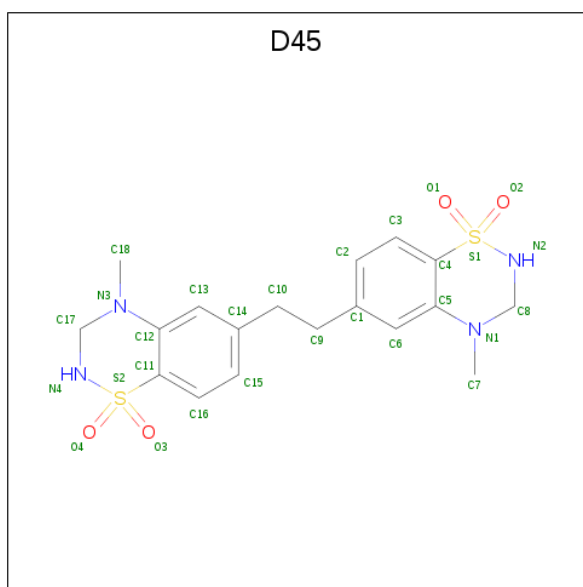
Mol	Chain	Residues	Atoms		ZeroOcc	AltConf
5	B	1	Total	Cl	0	0
			1	1		
5	A	3	Total	Cl	0	0
			3	3		

- Molecule 6 is DI(HYDROXYETHYL)ETHER (three-letter code: PEG) (formula: C₄H₁₀O₃).



Mol	Chain	Residues	Atoms				ZeroOcc	AltConf
6	A	1	Total	C	H	O	0	0
			17	4	10	3		
6	B	1	Total	C	H	O	0	0
			17	4	10	3		

- Molecule 7 is 6,6'-(Ethane-1,2-diyl)bis(4-methyl-3,4-dihydro-2H-1,2,4-benzothiazine 1,1-dioxide) (three-letter code: D45) (formula: C₁₈H₂₂N₄O₄S₂) (labeled as "Ligand of Interest" by author).



Mol	Chain	Residues	Atoms					ZeroOcc	AltConf	
			Total	C	H	N	O			S
7	B	1	50	18	22	4	4	2	0	0

- Molecule 8 is water.

Mol	Chain	Residues	Atoms		ZeroOcc	AltConf
8	A	142	Total	O	0	0
			142	142		
8	B	160	Total	O	0	0
			160	160		

3 Residue-property plots [i](#)

These plots are drawn for all protein, RNA and DNA chains in the entry. The first graphic for a chain summarises the proportions of the various outlier classes displayed in the second graphic. The second graphic shows the sequence view annotated by issues in geometry and electron density. Residues are color-coded according to the number of geometric quality criteria for which they contain at least one outlier: green = 0, yellow = 1, orange = 2 and red = 3 or more. A red dot above a residue indicates a poor fit to the electron density ($RSRZ > 2$). Stretches of 2 or more consecutive residues without any outlier are shown as a green connector. Residues present in the sample, but not in the model, are shown in grey.

- Molecule 1: Glutamate receptor 2

Chain A:  94%



- Molecule 1: Glutamate receptor 2

Chain B:  97%



4 Data and refinement statistics

Property	Value	Source
Space group	P 21 21 2	Depositor
Cell constants a, b, c, α , β , γ	97.44Å 122.03Å 47.62Å 90.00° 90.00° 90.00°	Depositor
Resolution (Å)	48.72 – 1.90 48.72 – 1.90	Depositor EDS
% Data completeness (in resolution range)	99.8 (48.72-1.90) 99.9 (48.72-1.90)	Depositor EDS
R_{merge}	(Not available)	Depositor
R_{sym}	0.13	Depositor
$\langle I/\sigma(I) \rangle$ ¹	3.37 (at 1.90Å)	Xtrriage
Refinement program	PHENIX 1.12_2829	Depositor
R, R_{free}	0.169 , 0.192 0.169 , 0.192	Depositor DCC
R_{free} test set	2302 reflections (5.05%)	wwPDB-VP
Wilson B-factor (Å ²)	25.1	Xtrriage
Anisotropy	0.361	Xtrriage
Bulk solvent k_{sol} (e/Å ³), B_{sol} (Å ²)	0.41 , 45.2	EDS
L-test for twinning ²	$\langle L \rangle = 0.50$, $\langle L^2 \rangle = 0.34$	Xtrriage
Estimated twinning fraction	No twinning to report.	Xtrriage
F_o, F_c correlation	0.97	EDS
Total number of atoms	8837	wwPDB-VP
Average B, all atoms (Å ²)	35.0	wwPDB-VP

Xtrriage's analysis on translational NCS is as follows: *The analyses of the Patterson function reveals a significant off-origin peak that is 23.38 % of the origin peak, indicating pseudo-translational symmetry. The chance of finding a peak of this or larger height randomly in a structure without pseudo-translational symmetry is equal to 4.7113e-03. The detected translational NCS is most likely also responsible for the elevated intensity ratio.*

¹Intensities estimated from amplitudes.

²Theoretical values of $\langle |L| \rangle$, $\langle L^2 \rangle$ for acentric reflections are 0.5, 0.333 respectively for untwinned datasets, and 0.375, 0.2 for perfectly twinned datasets.

5 Model quality [i](#)

5.1 Standard geometry [i](#)

Bond lengths and bond angles in the following residue types are not validated in this section: GOL, PEG, SO4, D45, CL

The Z score for a bond length (or angle) is the number of standard deviations the observed value is removed from the expected value. A bond length (or angle) with $|Z| > 5$ is considered an outlier worth inspection. RMSZ is the root-mean-square of all Z scores of the bond lengths (or angles).

Mol	Chain	Bond lengths		Bond angles	
		RMSZ	# Z >5	RMSZ	# Z >5
1	A	0.31	0/2131	0.49	0/2863
1	B	0.33	0/2100	0.51	0/2823
All	All	0.32	0/4231	0.50	0/5686

There are no bond length outliers.

There are no bond angle outliers.

There are no chirality outliers.

There are no planarity outliers.

5.2 Too-close contacts [i](#)

In the following table, the Non-H and H(model) columns list the number of non-hydrogen atoms and hydrogen atoms in the chain respectively. The H(added) column lists the number of hydrogen atoms added and optimized by MolProbity. The Clashes column lists the number of clashes within the asymmetric unit, whereas Symm-Clashes lists symmetry related clashes.

Mol	Chain	Non-H	H(model)	H(added)	Clashes	Symm-Clashes
1	A	2060	2106	2080	8	0
1	B	2052	2095	2095	5	0
2	A	30	0	0	0	0
2	B	15	0	0	0	0
3	A	10	8	5	1	0
3	B	10	5	5	1	0
4	A	12	16	16	2	0
4	B	12	16	16	1	0
5	A	3	0	0	0	0
5	B	1	0	0	0	0
6	A	7	10	10	1	0

Continued on next page...

Continued from previous page...

Mol	Chain	Non-H	H(model)	H(added)	Clashes	Symm-Clashes
6	B	7	10	10	1	0
7	B	28	22	0	0	0
8	A	142	0	0	0	0
8	B	160	0	0	0	0
All	All	4549	4288	4237	11	0

The all-atom clashscore is defined as the number of clashes found per 1000 atoms (including hydrogen atoms). The all-atom clashscore for this structure is 1.

All (11) close contacts within the same asymmetric unit are listed below, sorted by their clash magnitude.

Atom-1	Atom-2	Interatomic distance (Å)	Clash overlap (Å)
1:A:198:GLU:OE1	4:A:308:GOL:H32	2.07	0.54
1:A:239:LEU:CD1	1:B:97:GLU:HG3	2.39	0.52
1:A:214:ASN:HD21	4:A:308:GOL:H31	1.76	0.51
1:A:91:THR:HG1	3:A:307:GLU:N	2.12	0.47
1:B:91:THR:HG1	3:B:305:GLU:N	2.13	0.47
1:B:148:ARG:HE	6:B:309:PEG:H12	1.84	0.42
1:A:97:GLU:HG3	1:B:239:LEU:CD1	2.50	0.42
1:A:253:LYS:O	1:A:257:ASP:HB2	2.21	0.41
1:B:214:ASN:OD1	4:B:307:GOL:H12	2.21	0.40
1:A:163:ARG:NH2	6:A:313:PEG:O1	2.55	0.40
1:A:152:ILE:N	1:A:152:ILE:HD12	2.37	0.40

There are no symmetry-related clashes.

5.3 Torsion angles [i](#)

5.3.1 Protein backbone [i](#)

In the following table, the Percentiles column shows the percent Ramachandran outliers of the chain as a percentile score with respect to all X-ray entries followed by that with respect to entries of similar resolution.

The Analysed column shows the number of residues for which the backbone conformation was analysed, and the total number of residues.

Mol	Chain	Analysed	Favoured	Allowed	Outliers	Percentiles	
1	A	267/264 (101%)	265 (99%)	2 (1%)	0	100	100
1	B	264/264 (100%)	262 (99%)	2 (1%)	0	100	100

Continued on next page...

Continued from previous page...

Mol	Chain	Analysed	Favoured	Allowed	Outliers	Percentiles	
All	All	531/528 (101%)	527 (99%)	4 (1%)	0	100	100

There are no Ramachandran outliers to report.

5.3.2 Protein sidechains [i](#)

In the following table, the Percentiles column shows the percent sidechain outliers of the chain as a percentile score with respect to all X-ray entries followed by that with respect to entries of similar resolution.

The Analysed column shows the number of residues for which the sidechain conformation was analysed, and the total number of residues.

Mol	Chain	Analysed	Rotameric	Outliers	Percentiles	
1	A	227/219 (104%)	226 (100%)	1 (0%)	91	91
1	B	222/219 (101%)	220 (99%)	2 (1%)	78	79
All	All	449/438 (102%)	446 (99%)	3 (1%)	84	84

All (3) residues with a non-rotameric sidechain are listed below:

Mol	Chain	Res	Type
1	A	109	LEU
1	B	109	LEU
1	B	218	LYS

Some sidechains can be flipped to improve hydrogen bonding and reduce clashes. There are no such sidechains identified.

5.3.3 RNA [i](#)

There are no RNA molecules in this entry.

5.4 Non-standard residues in protein, DNA, RNA chains [i](#)

There are no non-standard protein/DNA/RNA residues in this entry.

5.5 Carbohydrates [i](#)

There are no carbohydrates in this entry.

5.6 Ligand geometry [i](#)

Of 22 ligands modelled in this entry, 4 are monoatomic - leaving 18 for Mogul analysis.

In the following table, the Counts columns list the number of bonds (or angles) for which Mogul statistics could be retrieved, the number of bonds (or angles) that are observed in the model and the number of bonds (or angles) that are defined in the Chemical Component Dictionary. The Link column lists molecule types, if any, to which the group is linked. The Z score for a bond length (or angle) is the number of standard deviations the observed value is removed from the expected value. A bond length (or angle) with $|Z| > 2$ is considered an outlier worth inspection. RMSZ is the root-mean-square of all Z scores of the bond lengths (or angles).

Mol	Type	Chain	Res	Link	Bond lengths			Bond angles		
					Counts	RMSZ	# Z > 2	Counts	RMSZ	# Z > 2
2	SO4	B	301	-	4,4,4	0.13	0	6,6,6	0.13	0
2	SO4	A	301	-	4,4,4	0.14	0	6,6,6	0.07	0
4	GOL	A	308	-	5,5,5	0.90	0	5,5,5	0.88	0
6	PEG	A	313	-	6,6,6	0.41	0	5,5,5	0.30	0
2	SO4	A	305	-	4,4,4	0.15	0	6,6,6	0.05	0
2	SO4	A	302	-	4,4,4	0.17	0	6,6,6	0.26	0
4	GOL	B	306	-	5,5,5	1.06	0	5,5,5	0.82	0
2	SO4	A	306	-	4,4,4	0.13	0	6,6,6	0.07	0
4	GOL	A	309	-	5,5,5	0.97	0	5,5,5	0.93	0
2	SO4	B	303	-	4,4,4	0.13	0	6,6,6	0.10	0
6	PEG	B	309	-	6,6,6	0.41	0	5,5,5	0.51	0
7	D45	B	304	-	29,31,31	2.20	7 (24%)	42,48,48	2.44	12 (28%)
2	SO4	B	302	-	4,4,4	0.12	0	6,6,6	0.21	0
2	SO4	A	304	-	4,4,4	0.15	0	6,6,6	0.04	0
2	SO4	A	303	-	4,4,4	0.14	0	6,6,6	0.15	0
4	GOL	B	307	-	5,5,5	0.96	0	5,5,5	0.94	0

In the following table, the Chirals column lists the number of chiral outliers, the number of chiral centers analysed, the number of these observed in the model and the number defined in the Chemical Component Dictionary. Similar counts are reported in the Torsion and Rings columns. '-' means no outliers of that kind were identified.

Mol	Type	Chain	Res	Link	Chirals	Torsions	Rings
4	GOL	A	308	-	-	2/4/4/4	-
6	PEG	A	313	-	-	2/4/4/4	-
4	GOL	B	306	-	-	3/4/4/4	-
4	GOL	A	309	-	-	0/4/4/4	-
6	PEG	B	309	-	-	1/4/4/4	-
7	D45	B	304	-	-	1/5/37/37	0/4/4/4
4	GOL	B	307	-	-	0/4/4/4	-

All (7) bond length outliers are listed below:

Mol	Chain	Res	Type	Atoms	Z	Observed(Å)	Ideal(Å)
7	B	304	D45	S2-N4	4.65	1.69	1.63
7	B	304	D45	S1-N2	4.58	1.69	1.63
7	B	304	D45	O4-S2	4.29	1.48	1.43
7	B	304	D45	O3-S2	3.95	1.48	1.43
7	B	304	D45	O2-S1	3.94	1.48	1.43
7	B	304	D45	O1-S1	3.93	1.48	1.43
7	B	304	D45	C4-S1	2.14	1.77	1.75

All (12) bond angle outliers are listed below:

Mol	Chain	Res	Type	Atoms	Z	Observed(°)	Ideal(°)
7	B	304	D45	C17-N3-C12	8.62	124.11	110.79
7	B	304	D45	C8-N1-C5	7.86	122.94	110.79
7	B	304	D45	O2-S1-N2	3.72	111.39	107.92
7	B	304	D45	C4-S1-N2	-3.63	99.49	102.37
7	B	304	D45	O3-S2-N4	3.32	111.02	107.92
7	B	304	D45	C17-N4-S2	3.07	121.44	112.84
7	B	304	D45	O1-S1-N2	-3.06	105.08	107.92
7	B	304	D45	C8-N2-S1	2.86	120.86	112.84
7	B	304	D45	C11-S2-N4	-2.75	100.19	102.37
7	B	304	D45	C16-C11-S2	-2.51	115.45	119.37
7	B	304	D45	O2-S1-O1	2.33	120.84	118.46
7	B	304	D45	C3-C4-S1	-2.30	115.77	119.37

There are no chirality outliers.

All (9) torsion outliers are listed below:

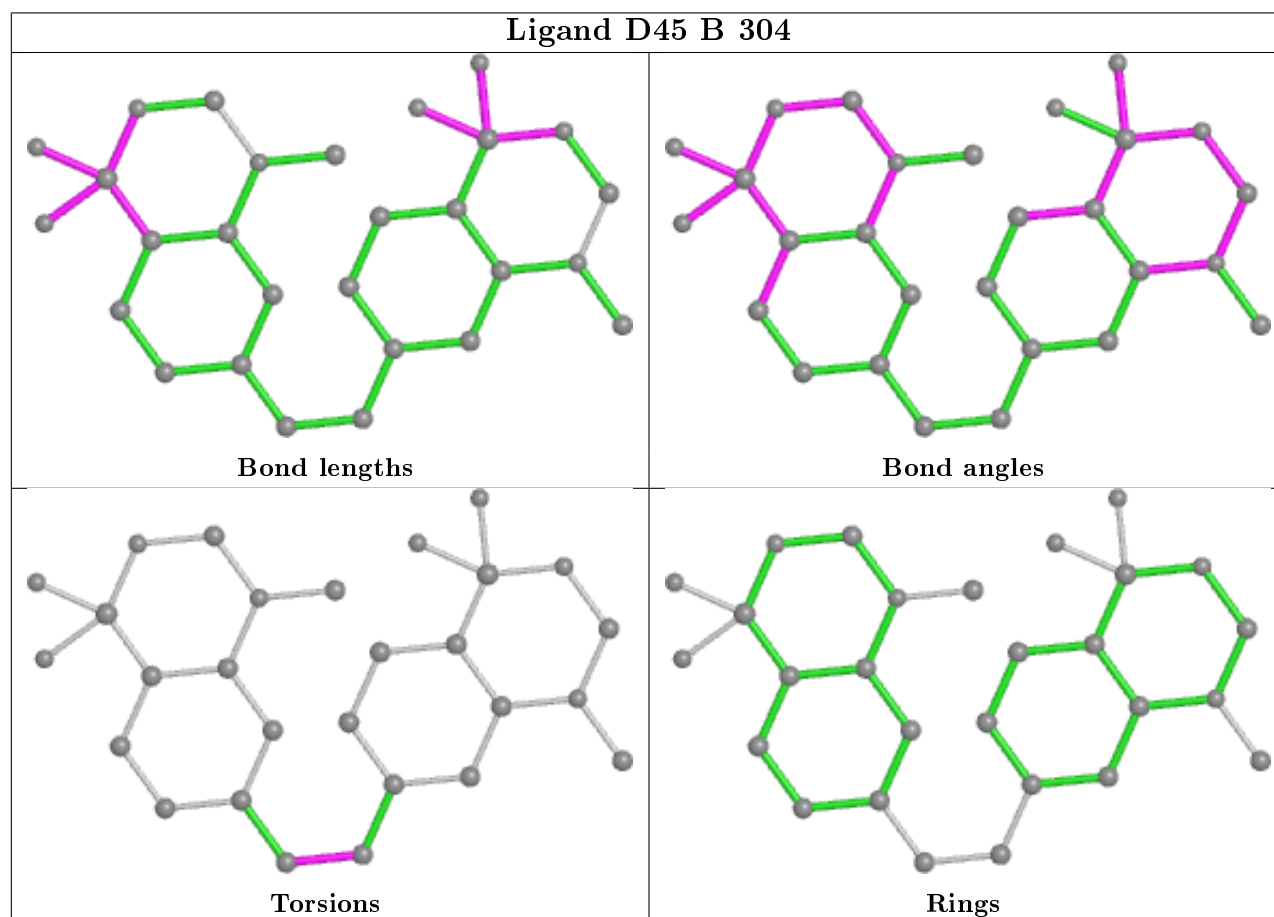
Mol	Chain	Res	Type	Atoms
4	A	308	GOL	C1-C2-C3-O3
4	B	306	GOL	C1-C2-C3-O3
6	A	313	PEG	O1-C1-C2-O2
4	B	306	GOL	O1-C1-C2-C3
4	A	308	GOL	O2-C2-C3-O3
6	B	309	PEG	O1-C1-C2-O2
6	A	313	PEG	C4-C3-O2-C2
4	B	306	GOL	O2-C2-C3-O3
7	B	304	D45	C14-C10-C9-C1

There are no ring outliers.

4 monomers are involved in 5 short contacts:

Mol	Chain	Res	Type	Clashes	Symm-Clashes
4	A	308	GOL	2	0
6	A	313	PEG	1	0
6	B	309	PEG	1	0
4	B	307	GOL	1	0

The following is a two-dimensional graphical depiction of Mogul quality analysis of bond lengths, bond angles, torsion angles, and ring geometry for all instances of the Ligand of Interest. In addition, ligands with molecular weight > 250 and outliers as shown on the validation Tables will also be included. For torsion angles, if less than 5% of the Mogul distribution of torsion angles is within 10 degrees of the torsion angle in question, then that torsion angle is considered an outlier. Any bond that is central to one or more torsion angles identified as an outlier by Mogul will be highlighted in the graph. For rings, the root-mean-square deviation (RMSD) between the ring in question and similar rings identified by Mogul is calculated over all ring torsion angles. If the average RMSD is greater than 60 degrees and the minimal RMSD between the ring in question and any Mogul-identified rings is also greater than 60 degrees, then that ring is considered an outlier. The outliers are highlighted in purple. The color gray indicates Mogul did not find sufficient equivalents in the CSD to analyse the geometry.



5.7 Other polymers [i](#)

There are no such residues in this entry.

5.8 Polymer linkage issues [i](#)

There are no chain breaks in this entry.

6 Fit of model and data [i](#)

6.1 Protein, DNA and RNA chains [i](#)

In the following table, the column labelled '#RSRZ> 2' contains the number (and percentage) of RSRZ outliers, followed by percent RSRZ outliers for the chain as percentile scores relative to all X-ray entries and entries of similar resolution. The OWAB column contains the minimum, median, 95th percentile and maximum values of the occupancy-weighted average B-factor per residue. The column labelled 'Q< 0.9' lists the number of (and percentage) of residues with an average occupancy less than 0.9.

Mol	Chain	Analysed	<RSRZ>	#RSRZ>2	OWAB(Å ²)	Q<0.9
1	A	259/264 (98%)	-0.06	1 (0%) 92 93	17, 29, 51, 74	0
1	B	262/264 (99%)	-0.05	1 (0%) 92 93	16, 26, 51, 71	0
All	All	521/528 (98%)	-0.06	2 (0%) 92 93	16, 28, 51, 74	0

All (2) RSRZ outliers are listed below:

Mol	Chain	Res	Type	RSRZ
1	A	67	ASP	2.4
1	B	21	LYS	2.3

6.2 Non-standard residues in protein, DNA, RNA chains [i](#)

There are no non-standard protein/DNA/RNA residues in this entry.

6.3 Carbohydrates [i](#)

There are no carbohydrates in this entry.

6.4 Ligands [i](#)

In the following table, the Atoms column lists the number of modelled atoms in the group and the number defined in the chemical component dictionary. The B-factors column lists the minimum, median, 95th percentile and maximum values of B factors of atoms in the group. The column labelled 'Q< 0.9' lists the number of atoms with occupancy less than 0.9.

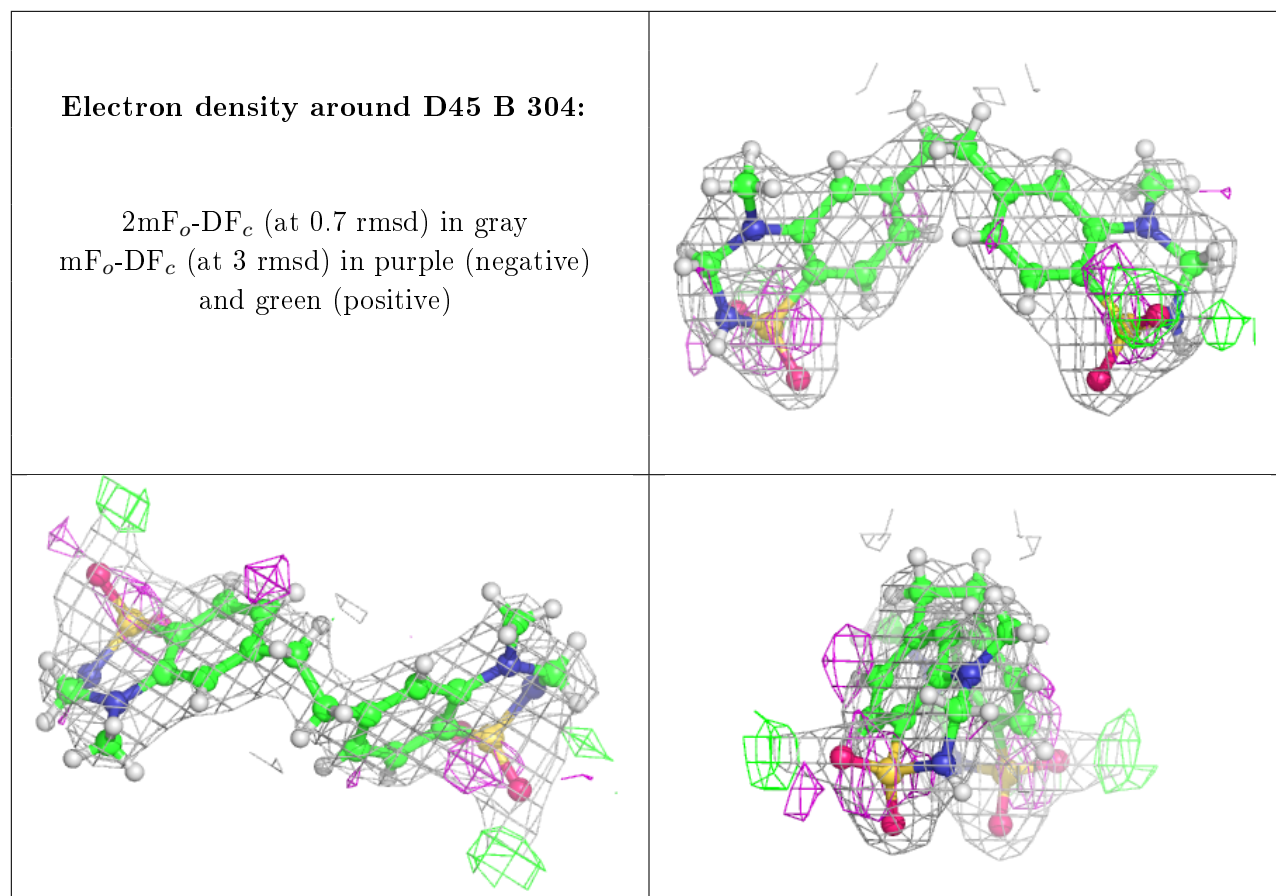
Mol	Type	Chain	Res	Atoms	RSCC	RSR	B-factors(Å ²)	Q<0.9
6	PEG	B	309	7/7	0.59	0.27	70,84,93,93	0
6	PEG	A	313	7/7	0.65	0.19	74,89,96,96	0
4	GOL	A	309	6/6	0.67	0.22	68,82,90,93	0

Continued on next page...

Continued from previous page...

Mol	Type	Chain	Res	Atoms	RSCC	RSR	B-factors(\AA^2)	Q<0.9
4	GOL	B	307	6/6	0.67	0.23	70,84,97,98	0
5	CL	A	312	1/1	0.70	0.10	72,72,72,72	0
4	GOL	A	308	6/6	0.78	0.27	61,77,87,92	0
5	CL	A	310	1/1	0.79	0.09	62,62,62,62	0
4	GOL	B	306	6/6	0.85	0.25	64,78,92,94	0
2	SO4	A	305	5/5	0.87	0.21	95,98,98,99	0
5	CL	A	311	1/1	0.88	0.10	59,59,59,59	0
2	SO4	B	303	5/5	0.89	0.26	78,79,82,84	0
2	SO4	A	301	5/5	0.91	0.14	65,70,73,78	0
2	SO4	A	306	5/5	0.91	0.21	77,81,82,82	0
5	CL	B	308	1/1	0.91	0.07	68,68,68,68	0
2	SO4	A	304	5/5	0.91	0.14	89,90,91,91	0
7	D45	B	304	28/28	0.95	0.12	21,30,36,39	0
2	SO4	A	303	5/5	0.96	0.15	48,57,60,61	0
2	SO4	B	301	5/5	0.97	0.10	46,56,59,61	0
3	GLU	A	307	10/10	0.97	0.09	17,21,29,29	0
3	GLU	B	305	10/10	0.97	0.09	16,20,24,24	0
2	SO4	B	302	5/5	0.98	0.10	38,40,42,46	0
2	SO4	A	302	5/5	0.98	0.07	40,41,41,43	0

The following is a graphical depiction of the model fit to experimental electron density of all instances of the Ligand of Interest. In addition, ligands with molecular weight > 250 and outliers as shown on the geometry validation Tables will also be included. Each fit is shown from different orientation to approximate a three-dimensional view.



6.5 Other polymers [i](#)

There are no such residues in this entry.