



Full wwPDB X-ray Structure Validation Report ⓘ

May 14, 2020 – 01:56 pm BST

PDB ID : 5HCN
Title : GPN-loop GTPase Npa3 in complex with GMPPCP
Authors : Niesser, J.; Wagner, F.R.; Kostrewa, D.; Muehlbacher, W.; Cramer, P.
Deposited on : 2016-01-04
Resolution : 2.20 Å(reported)

This is a Full wwPDB X-ray Structure Validation Report for a publicly released PDB entry.

We welcome your comments at validation@mail.wwpdb.org

A user guide is available at

<https://www.wwpdb.org/validation/2017/XrayValidationReportHelp>

with specific help available everywhere you see the ⓘ symbol.

The following versions of software and data (see [references ⓘ](#)) were used in the production of this report:

MolProbity : 4.02b-467
Mogul : 1.8.5 (274361), CSD as541be (2020)
Xtriage (Phenix) : 1.13
EDS : 2.11
buster-report : 1.1.7 (2018)
Percentile statistics : 20191225.v01 (using entries in the PDB archive December 25th 2019)
Refmac : 5.8.0158
CCP4 : 7.0.044 (Gargrove)
Ideal geometry (proteins) : Engh & Huber (2001)
Ideal geometry (DNA, RNA) : Parkinson et al. (1996)
Validation Pipeline (wwPDB-VP) : 2.11

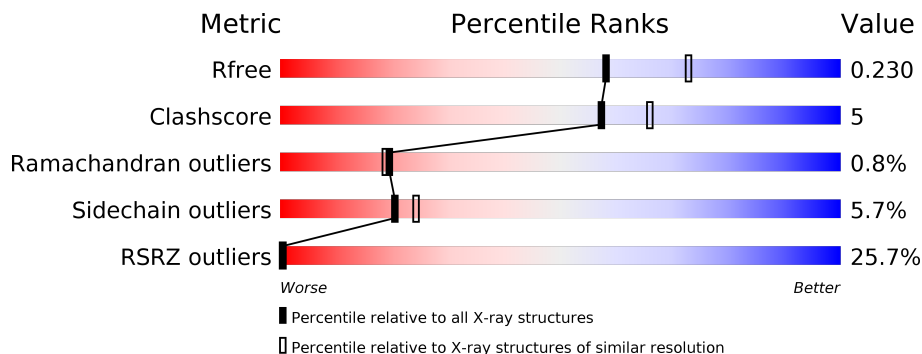
1 Overall quality at a glance

The following experimental techniques were used to determine the structure:

X-RAY DIFFRACTION

The reported resolution of this entry is 2.20 Å.

Percentile scores (ranging between 0-100) for global validation metrics of the entry are shown in the following graphic. The table shows the number of entries on which the scores are based.



Metric	Whole archive (#Entries)	Similar resolution (#Entries, resolution range(Å))
R_{free}	130704	4898 (2.20-2.20)
Clashscore	141614	5594 (2.20-2.20)
Ramachandran outliers	138981	5503 (2.20-2.20)
Sidechain outliers	138945	5504 (2.20-2.20)
RSRZ outliers	127900	4800 (2.20-2.20)

The table below summarises the geometric issues observed across the polymeric chains and their fit to the electron density. The red, orange, yellow and green segments on the lower bar indicate the fraction of residues that contain outliers for ≥ 3 , 2, 1 and 0 types of geometric quality criteria respectively. A grey segment represents the fraction of residues that are not modelled. The numeric value for each fraction is indicated below the corresponding segment, with a dot representing fractions $\leq 5\%$. The upper red bar (where present) indicates the fraction of residues that have poor fit to the electron density. The numeric value is given above the bar.

Mol	Chain	Length	Quality of chain
1	A	261	

The following table lists non-polymeric compounds, carbohydrate monomers and non-standard residues in protein, DNA, RNA chains that are outliers for geometric or electron-density-fit criteria:

Mol	Type	Chain	Res	Chirality	Geometry	Clashes	Electron density
2	DAO	A	301	-	-	-	X
5	GOL	A	304	-	-	-	X

2 Entry composition

There are 6 unique types of molecules in this entry. The entry contains 2062 atoms, of which 0 are hydrogens and 0 are deuteriums.

In the tables below, the ZeroOcc column contains the number of atoms modelled with zero occupancy, the AltConf column contains the number of residues with at least one atom in alternate conformation and the Trace column contains the number of residues modelled with at most 2 atoms.

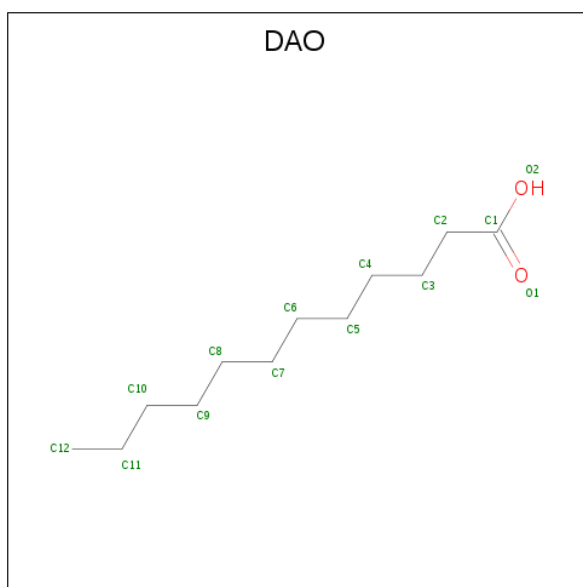
- Molecule 1 is a protein called GPN-loop GTPase 1.

Mol	Chain	Residues	Atoms					ZeroOcc	AltConf	Trace
			Total	C	N	O	S			
1	A	253	1998	1278	322	382	16	0	0	0

There are 16 discrepancies between the modelled and reference sequences:

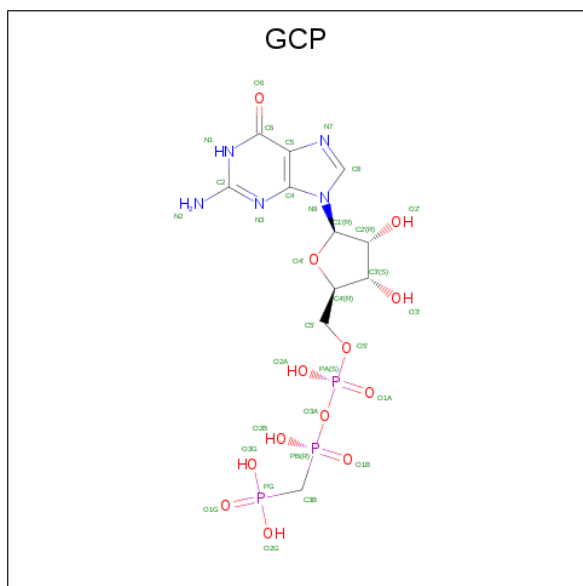
Chain	Residue	Modelled	Actual	Comment	Reference
A	?	-	LEU	deletion	UNP P47122
A	?	-	ASN	deletion	UNP P47122
A	?	-	GLY	deletion	UNP P47122
A	?	-	ASP	deletion	UNP P47122
A	?	-	ASN	deletion	UNP P47122
A	?	-	GLY	deletion	UNP P47122
A	?	-	LEU	deletion	UNP P47122
A	?	-	GLY	deletion	UNP P47122
A	?	-	SER	deletion	UNP P47122
A	265	LYS	-	expression tag	UNP P47122
A	266	HIS	-	expression tag	UNP P47122
A	267	HIS	-	expression tag	UNP P47122
A	268	HIS	-	expression tag	UNP P47122
A	269	HIS	-	expression tag	UNP P47122
A	270	HIS	-	expression tag	UNP P47122
A	271	HIS	-	expression tag	UNP P47122

- Molecule 2 is LAURIC ACID (three-letter code: DAO) (formula: C₁₂H₂₄O₂).



Mol	Chain	Residues	Atoms				ZeroOcc	AltConf
2	A	1	Total	C	O	0	0	
			14	12	2			

- Molecule 3 is PHOSPHOMETHYLPHOSPHONIC ACID GUANYLATE ESTER (three-letter code: GCP) (formula: $C_{11}H_{18}N_5O_{13}P_3$).

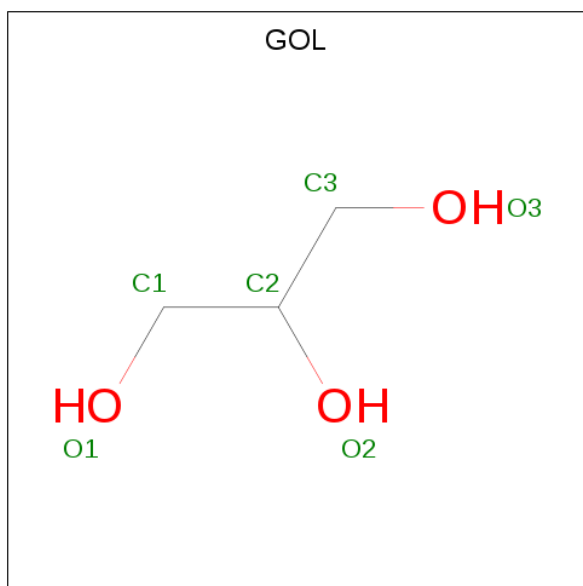


Mol	Chain	Residues	Atoms					ZeroOcc	AltConf
3	A	1	Total	C	N	O	P	0	0
			32	11	5	13	3		

- Molecule 4 is MAGNESIUM ION (three-letter code: MG) (formula: Mg).

Mol	Chain	Residues	Atoms	ZeroOcc	AltConf
4	A	1	Total Mg 1 1	0	0

- Molecule 5 is GLYCEROL (three-letter code: GOL) (formula: C₃H₈O₃).



Mol	Chain	Residues	Atoms	ZeroOcc	AltConf
5	A	1	Total C O 6 3 3	0	0
5	A	1	Total C O 6 3 3	0	0

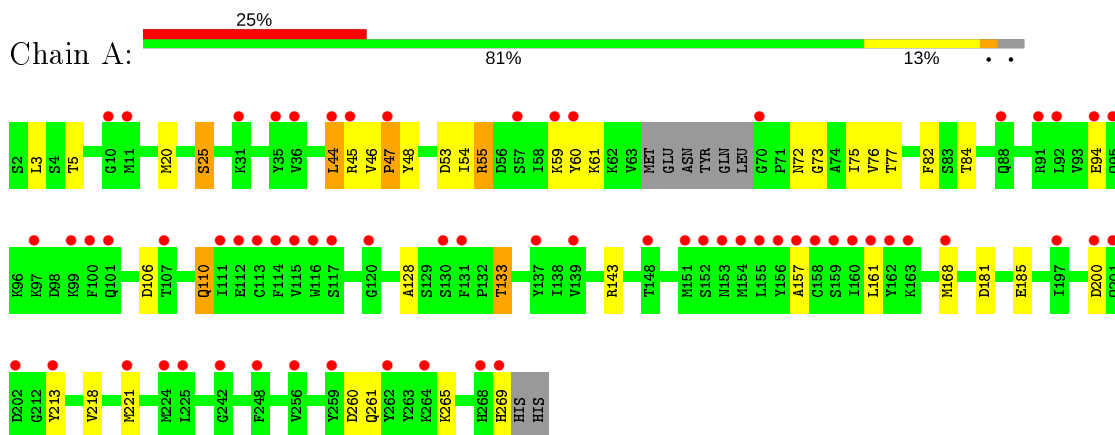
- Molecule 6 is water.

Mol	Chain	Residues	Atoms	ZeroOcc	AltConf
6	A	5	Total O 5 5	0	0

3 Residue-property plots [i](#)

These plots are drawn for all protein, RNA and DNA chains in the entry. The first graphic for a chain summarises the proportions of the various outlier classes displayed in the second graphic. The second graphic shows the sequence view annotated by issues in geometry and electron density. Residues are color-coded according to the number of geometric quality criteria for which they contain at least one outlier: green = 0, yellow = 1, orange = 2 and red = 3 or more. A red dot above a residue indicates a poor fit to the electron density ($RSRZ > 2$). Stretches of 2 or more consecutive residues without any outlier are shown as a green connector. Residues present in the sample, but not in the model, are shown in grey.

- Molecule 1: GPN-loop GTPase 1



4 Data and refinement statistics

Property	Value	Source
Space group	P 41 21 2	Depositor
Cell constants a, b, c, α , β , γ	116.24Å 116.24Å 56.76Å 90.00° 90.00° 90.00°	Depositor
Resolution (Å)	36.76 – 2.20 46.71 – 2.20	Depositor EDS
% Data completeness (in resolution range)	99.5 (36.76-2.20) 99.5 (46.71-2.20)	Depositor EDS
R_{merge}	(Not available)	Depositor
R_{sym}	0.04	Depositor
$\langle I/\sigma(I) \rangle$ ¹	2.07 (at 2.20Å)	Xtrriage
Refinement program	PHENIX	Depositor
R, R_{free}	0.214 , 0.227 0.218 , 0.230	Depositor DCC
R_{free} test set	404 reflections (2.00%)	wwPDB-VP
Wilson B-factor (Å ²)	57.2	Xtrriage
Anisotropy	0.692	Xtrriage
Bulk solvent k_{sol} (e/Å ³), B_{sol} (Å ²)	0.32 , 98.4	EDS
L-test for twinning ²	$\langle L \rangle = 0.49$, $\langle L^2 \rangle = 0.33$	Xtrriage
Estimated twinning fraction	No twinning to report.	Xtrriage
F_o, F_c correlation	0.96	EDS
Total number of atoms	2062	wwPDB-VP
Average B, all atoms (Å ²)	121.0	wwPDB-VP

Xtrriage's analysis on translational NCS is as follows: *The largest off-origin peak in the Patterson function is 5.61% of the height of the origin peak. No significant pseudotranslation is detected.*

¹ Intensities estimated from amplitudes.

² Theoretical values of $\langle |L| \rangle$, $\langle L^2 \rangle$ for acentric reflections are 0.5, 0.333 respectively for untwinned datasets, and 0.375, 0.2 for perfectly twinned datasets.

5 Model quality [i](#)

5.1 Standard geometry [i](#)

Bond lengths and bond angles in the following residue types are not validated in this section: GOL, MG, DAO, GCP

The Z score for a bond length (or angle) is the number of standard deviations the observed value is removed from the expected value. A bond length (or angle) with $|Z| > 5$ is considered an outlier worth inspection. RMSZ is the root-mean-square of all Z scores of the bond lengths (or angles).

Mol	Chain	Bond lengths		Bond angles	
		RMSZ	# Z >5	RMSZ	# Z >5
1	A	0.38	0/2041	0.55	0/2759

There are no bond length outliers.

There are no bond angle outliers.

There are no chirality outliers.

There are no planarity outliers.

5.2 Too-close contacts [i](#)

In the following table, the Non-H and H(model) columns list the number of non-hydrogen atoms and hydrogen atoms in the chain respectively. The H(added) column lists the number of hydrogen atoms added and optimized by MolProbity. The Clashes column lists the number of clashes within the asymmetric unit, whereas Symm-Clashes lists symmetry related clashes.

Mol	Chain	Non-H	H(model)	H(added)	Clashes	Symm-Clashes
1	A	1998	0	1973	20	1
2	A	14	0	23	0	0
3	A	32	0	14	0	0
4	A	1	0	0	0	0
5	A	12	0	16	1	0
6	A	5	0	0	0	0
All	All	2062	0	2026	20	1

The all-atom clashscore is defined as the number of clashes found per 1000 atoms (including hydrogen atoms). The all-atom clashscore for this structure is 5.

All (20) close contacts within the same asymmetric unit are listed below, sorted by their clash magnitude.

Atom-1	Atom-2	Interatomic distance (Å)	Clash overlap (Å)
1:A:47:PRO:O	5:A:304:GOL:O2	2.03	0.77
1:A:157:ALA:HB1	1:A:168:MET:HE1	1.70	0.72
1:A:60:TYR:HA	1:A:61:LYS:HB3	1.75	0.67
1:A:44:LEU:HG	1:A:45:ARG:H	1.71	0.56
1:A:44:LEU:HD23	1:A:44:LEU:H	1.72	0.55
1:A:53:ASP:OD1	1:A:55:ARG:HG3	2.08	0.54
1:A:128:ALA:HA	1:A:133:THR:HG23	1.90	0.54
1:A:5:THR:HB	1:A:133:THR:HB	1.92	0.52
1:A:73:GLY:O	1:A:77:THR:HG22	2.11	0.50
1:A:25:SER:HB2	1:A:48:TYR:OH	2.15	0.47
1:A:213:TYR:HA	1:A:218:VAL:HG11	1.96	0.46
1:A:75:ILE:HD12	1:A:110:GLN:HG3	1.99	0.45
1:A:161:LEU:HA	1:A:161:LEU:HD23	1.86	0.43
1:A:72:ASN:O	1:A:76:VAL:HG23	2.19	0.43
1:A:20:MET:SD	1:A:106:ASP:HB2	2.60	0.42
1:A:46:VAL:HG23	1:A:55:ARG:NH1	2.36	0.41
1:A:261:GLN:O	1:A:265:LYS:HE3	2.20	0.41
1:A:54:ILE:HG13	1:A:82:PHE:CD1	2.56	0.41
1:A:60:TYR:HA	1:A:61:LYS:CB	2.45	0.41
1:A:181:ASP:O	1:A:185:GLU:HG3	2.21	0.40

All (1) symmetry-related close contacts are listed below. The label for Atom-2 includes the symmetry operator and encoded unit-cell translations to be applied.

Atom-1	Atom-2	Interatomic distance (Å)	Clash overlap (Å)
1:A:213:TYR:OH	1:A:213:TYR:OH[7_555]	2.12	0.08

5.3 Torsion angles [i](#)

5.3.1 Protein backbone [i](#)

In the following table, the Percentiles column shows the percent Ramachandran outliers of the chain as a percentile score with respect to all X-ray entries followed by that with respect to entries of similar resolution.

The Analysed column shows the number of residues for which the backbone conformation was analysed, and the total number of residues.

Mol	Chain	Analysed	Favoured	Allowed	Outliers	Percentiles
1	A	249/261 (95%)	239 (96%)	8 (3%)	2 (1%)	19 19

All (2) Ramachandran outliers are listed below:

Mol	Chain	Res	Type
1	A	110	GLN
1	A	47	PRO

5.3.2 Protein sidechains [i](#)

In the following table, the Percentiles column shows the percent sidechain outliers of the chain as a percentile score with respect to all X-ray entries followed by that with respect to entries of similar resolution.

The Analysed column shows the number of residues for which the sidechain conformation was analysed, and the total number of residues.

Mol	Chain	Analysed	Rotameric	Outliers	Percentiles
1	A	227/235 (97%)	214 (94%)	13 (6%)	20 24

All (13) residues with a non-rotameric sidechain are listed below:

Mol	Chain	Res	Type
1	A	3	LEU
1	A	25	SER
1	A	44	LEU
1	A	55	ARG
1	A	59	LYS
1	A	84	THR
1	A	94	GLU
1	A	133	THR
1	A	143	ARG
1	A	200	ASP
1	A	221	MET
1	A	260	ASP
1	A	269	HIS

Some sidechains can be flipped to improve hydrogen bonding and reduce clashes. There are no such sidechains identified.

5.3.3 RNA [i](#)

There are no RNA molecules in this entry.

5.4 Non-standard residues in protein, DNA, RNA chains [i](#)

There are no non-standard protein/DNA/RNA residues in this entry.

5.5 Carbohydrates [i](#)

There are no carbohydrates in this entry.

5.6 Ligand geometry [i](#)

Of 5 ligands modelled in this entry, 1 is monoatomic - leaving 4 for Mogul analysis.

In the following table, the Counts columns list the number of bonds (or angles) for which Mogul statistics could be retrieved, the number of bonds (or angles) that are observed in the model and the number of bonds (or angles) that are defined in the Chemical Component Dictionary. The Link column lists molecule types, if any, to which the group is linked. The Z score for a bond length (or angle) is the number of standard deviations the observed value is removed from the expected value. A bond length (or angle) with $|Z| > 2$ is considered an outlier worth inspection. RMSZ is the root-mean-square of all Z scores of the bond lengths (or angles).

Mol	Type	Chain	Res	Link	Bond lengths			Bond angles		
					Counts	RMSZ	# Z > 2	Counts	RMSZ	# Z > 2
2	DAO	A	301	-	10,13,13	0.27	0	9,13,13	0.66	0
5	GOL	A	305	-	5,5,5	0.36	0	5,5,5	0.25	0
3	GCP	A	302	4	26,34,34	2.63	8 (30%)	31,54,54	1.19	2 (6%)
5	GOL	A	304	-	5,5,5	0.41	0	5,5,5	0.44	0

In the following table, the Chirals column lists the number of chiral outliers, the number of chiral centers analysed, the number of these observed in the model and the number defined in the Chemical Component Dictionary. Similar counts are reported in the Torsion and Rings columns. '-' means no outliers of that kind were identified.

Mol	Type	Chain	Res	Link	Chirals	Torsions	Rings
2	DAO	A	301	-	-	3/9/11/11	-
5	GOL	A	305	-	-	2/4/4/4	-
3	GCP	A	302	4	-	4/18/38/38	0/3/3/3
5	GOL	A	304	-	-	2/4/4/4	-

All (8) bond length outliers are listed below:

Mol	Chain	Res	Type	Atoms	Z	Observed(Å)	Ideal(Å)
3	A	302	GCP	C4-N9	-9.99	1.34	1.47

Continued on next page...

Continued from previous page...

Mol	Chain	Res	Type	Atoms	Z	Observed(Å)	Ideal(Å)
3	A	302	GCP	PG-O1G	5.36	1.61	1.50
3	A	302	GCP	C8-N9	-3.02	1.35	1.45
3	A	302	GCP	PG-O3G	2.85	1.61	1.54
3	A	302	GCP	PG-O2G	-2.75	1.48	1.54
3	A	302	GCP	C5-C6	-2.38	1.48	1.52
3	A	302	GCP	C2-N1	-2.19	1.35	1.44
3	A	302	GCP	PB-O2B	2.04	1.61	1.56

All (2) bond angle outliers are listed below:

Mol	Chain	Res	Type	Atoms	Z	Observed(°)	Ideal(°)
3	A	302	GCP	PA-O3A-PB	-3.17	122.50	132.56
3	A	302	GCP	C4-C5-N7	3.15	106.63	102.46

There are no chirality outliers.

All (11) torsion outliers are listed below:

Mol	Chain	Res	Type	Atoms
3	A	302	GCP	C5'-O5'-PA-O1A
3	A	302	GCP	C2'-C1'-N9-C4
5	A	304	GOL	O1-C1-C2-C3
2	A	301	DAO	C5-C6-C7-C8
5	A	305	GOL	O1-C1-C2-C3
2	A	301	DAO	C2-C3-C4-C5
2	A	301	DAO	C11-C10-C9-C8
5	A	305	GOL	O1-C1-C2-O2
5	A	304	GOL	O1-C1-C2-O2
3	A	302	GCP	C5'-O5'-PA-O3A
3	A	302	GCP	PB-C3B-PG-O1G

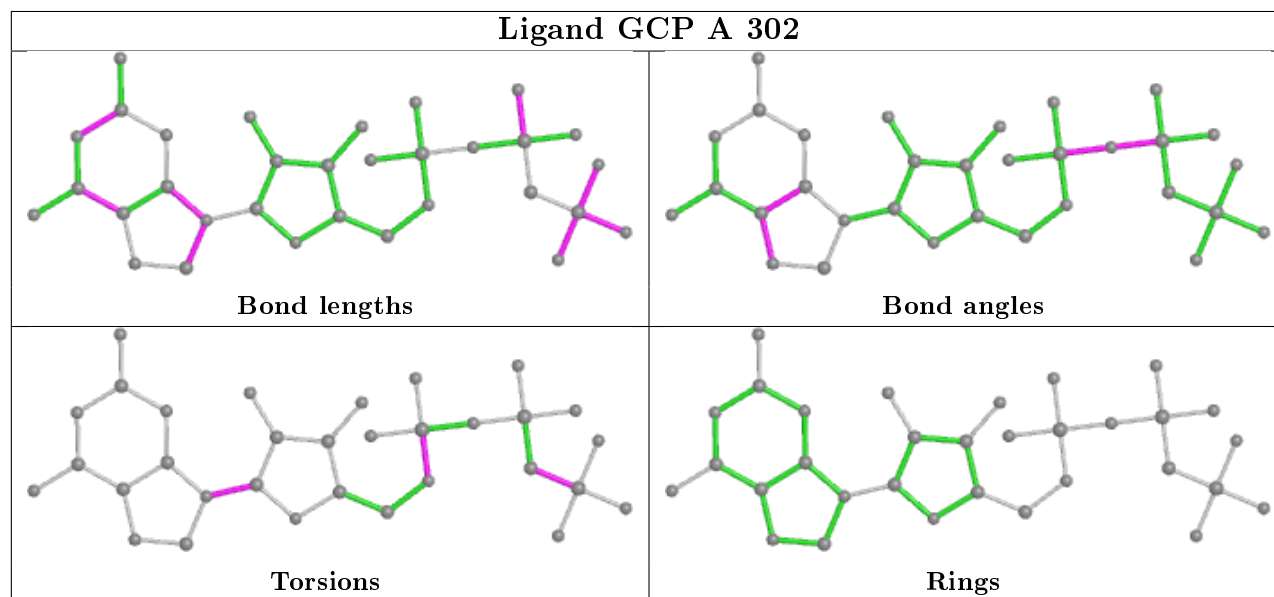
There are no ring outliers.

1 monomer is involved in 1 short contact:

Mol	Chain	Res	Type	Clashes	Symm-Clashes
5	A	304	GOL	1	0

The following is a two-dimensional graphical depiction of Mogul quality analysis of bond lengths, bond angles, torsion angles, and ring geometry for all instances of the Ligand of Interest. In addition, ligands with molecular weight > 250 and outliers as shown on the validation Tables will also be included. For torsion angles, if less than 5% of the Mogul distribution of torsion angles is within 10 degrees of the torsion angle in question, then that torsion angle is considered an outlier.

Any bond that is central to one or more torsion angles identified as an outlier by Mogul will be highlighted in the graph. For rings, the root-mean-square deviation (RMSD) between the ring in question and similar rings identified by Mogul is calculated over all ring torsion angles. If the average RMSD is greater than 60 degrees and the minimal RMSD between the ring in question and any Mogul-identified rings is also greater than 60 degrees, then that ring is considered an outlier. The outliers are highlighted in purple. The color gray indicates Mogul did not find sufficient equivalents in the CSD to analyse the geometry.



5.7 Other polymers [i](#)

There are no such residues in this entry.

5.8 Polymer linkage issues [i](#)

There are no chain breaks in this entry.

6 Fit of model and data

6.1 Protein, DNA and RNA chains

In the following table, the column labelled '#RSRZ > 2' contains the number (and percentage) of RSRZ outliers, followed by percent RSRZ outliers for the chain as percentile scores relative to all X-ray entries and entries of similar resolution. The OWAB column contains the minimum, median, 95th percentile and maximum values of the occupancy-weighted average B-factor per residue. The column labelled 'Q < 0.9' lists the number of (and percentage) of residues with an average occupancy less than 0.9.

Mol	Chain	Analysed	<RSRZ>	#RSRZ>2	OWAB(Å ²)	Q<0.9
1	A	253/261 (96%)	1.32	65 (25%) 0 0	89, 112, 173, 235	0

All (65) RSRZ outliers are listed below:

Mol	Chain	Res	Type	RSRZ
1	A	200	ASP	7.0
1	A	116	TRP	6.6
1	A	70	GLY	6.0
1	A	201	GLN	5.8
1	A	60	TYR	5.2
1	A	202	ASP	5.2
1	A	88	GLN	5.0
1	A	159	SER	4.9
1	A	156	TYR	4.2
1	A	157	ALA	4.1
1	A	162	TYR	4.1
1	A	161	LEU	4.0
1	A	111	ILE	4.0
1	A	155	LEU	4.0
1	A	152	SER	3.8
1	A	160	ILE	3.8
1	A	101	GLN	3.7
1	A	213	TYR	3.5
1	A	95	GLN	3.5
1	A	92	LEU	3.5
1	A	10	GLY	3.4
1	A	97	LYS	3.3
1	A	259	TYR	3.3
1	A	117	SER	3.3
1	A	44	LEU	3.1
1	A	163	LYS	3.0
1	A	242	GLY	3.0

Continued on next page...

Continued from previous page...

Mol	Chain	Res	Type	RSRZ
1	A	137	TYR	3.0
1	A	224	MET	3.0
1	A	91	ARG	2.9
1	A	11	MET	2.9
1	A	45	ARG	2.8
1	A	148	THR	2.8
1	A	59	LYS	2.8
1	A	114	PHE	2.8
1	A	131	PHE	2.8
1	A	269	HIS	2.7
1	A	94	GLU	2.7
1	A	107	THR	2.7
1	A	256	VAL	2.6
1	A	168	MET	2.6
1	A	262	TYR	2.5
1	A	264	LYS	2.5
1	A	154	MET	2.5
1	A	158	CYS	2.5
1	A	197	ILE	2.4
1	A	113	CYS	2.4
1	A	99	LYS	2.4
1	A	115	VAL	2.3
1	A	47	PRO	2.3
1	A	221	MET	2.3
1	A	268	HIS	2.2
1	A	130	SER	2.2
1	A	151	MET	2.2
1	A	35	TYR	2.2
1	A	120	GLY	2.2
1	A	100	PHE	2.1
1	A	57	SER	2.1
1	A	225	LEU	2.1
1	A	31	LYS	2.1
1	A	112	GLU	2.0
1	A	36	VAL	2.0
1	A	139	VAL	2.0
1	A	248	PHE	2.0
1	A	153	ASN	2.0

6.2 Non-standard residues in protein, DNA, RNA chains

There are no non-standard protein/DNA/RNA residues in this entry.

6.3 Carbohydrates [i](#)

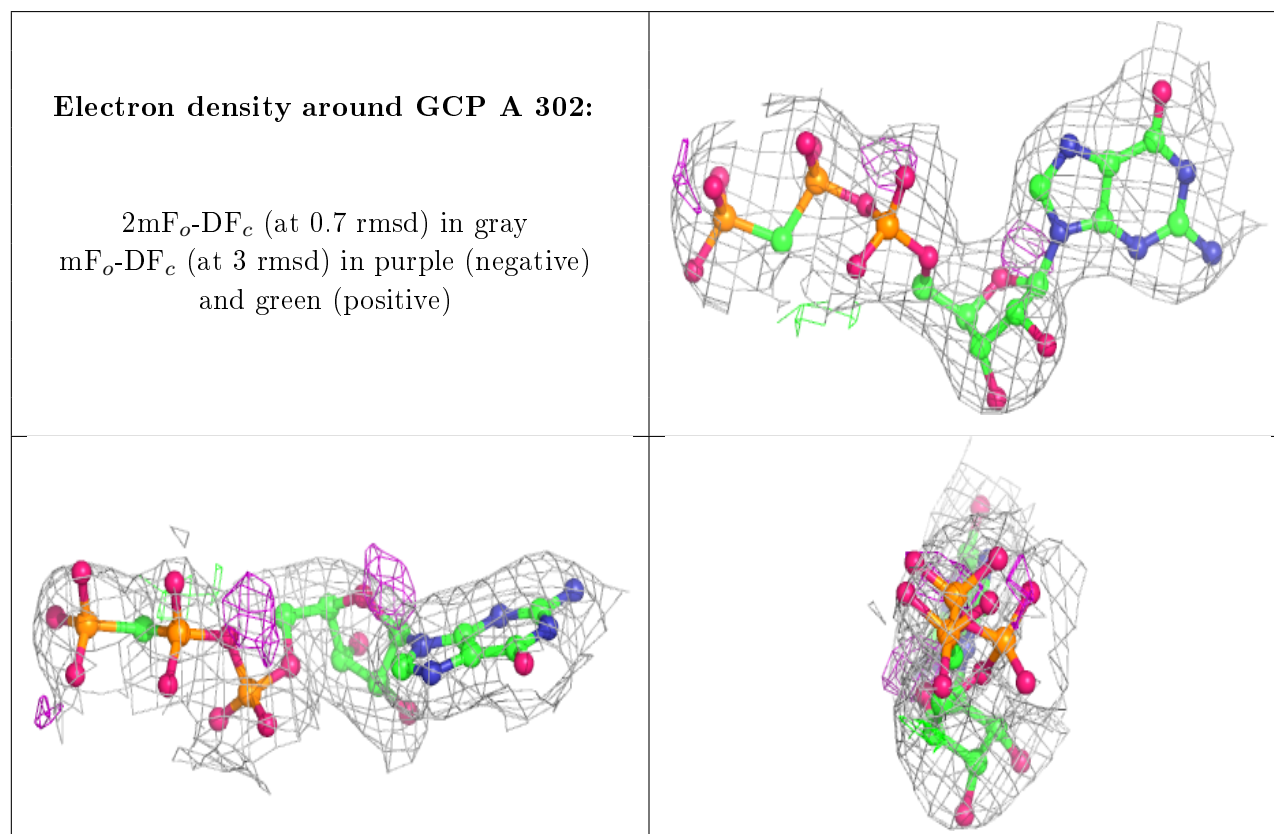
There are no carbohydrates in this entry.

6.4 Ligands [i](#)

In the following table, the Atoms column lists the number of modelled atoms in the group and the number defined in the chemical component dictionary. The B-factors column lists the minimum, median, 95th percentile and maximum values of B factors of atoms in the group. The column labelled 'Q< 0.9' lists the number of atoms with occupancy less than 0.9.

Mol	Type	Chain	Res	Atoms	RSCC	RSR	B-factors(Å ²)	Q<0.9
5	GOL	A	304	6/6	0.57	0.42	135,150,181,181	0
2	DAO	A	301	14/14	0.78	0.46	92,103,128,135	0
5	GOL	A	305	6/6	0.82	0.30	104,130,145,148	0
4	MG	A	303	1/1	0.82	0.07	166,166,166,166	0
3	GCP	A	302	32/32	0.93	0.13	96,111,175,208	0

The following is a graphical depiction of the model fit to experimental electron density of all instances of the Ligand of Interest. In addition, ligands with molecular weight > 250 and outliers as shown on the geometry validation Tables will also be included. Each fit is shown from different orientation to approximate a three-dimensional view.



6.5 Other polymers

There are no such residues in this entry.