



# wwPDB X-ray Structure Validation Summary Report ⓘ

Jan 8, 2024 – 05:30 am GMT

PDB ID : 6H1O  
Title : Structure of the BM3 heme domain in complex with voriconazole  
Authors : Jeffreys, L.N.; Munro, A.W.M.; Leys, D.  
Deposited on : 2018-07-12  
Resolution : 1.73 Å(reported)

This is a wwPDB X-ray Structure Validation Summary Report for a publicly released PDB entry.

We welcome your comments at [validation@mail.wwpdb.org](mailto:validation@mail.wwpdb.org)

A user guide is available at

<https://www.wwpdb.org/validation/2017/XrayValidationReportHelp>

with specific help available everywhere you see the ⓘ symbol.

The types of validation reports are described at

<http://www.wwpdb.org/validation/2017/FAQs#types>.

---

The following versions of software and data (see [references ⓘ](#)) were used in the production of this report:

MolProbity : 4.02b-467  
Mogul : 1.8.4, CSD as541be (2020)  
Xtriage (Phenix) : 1.13  
EDS : 2.36  
buster-report : 1.1.7 (2018)  
Percentile statistics : 20191225.v01 (using entries in the PDB archive December 25th 2019)  
Refmac : 5.8.0158  
CCP4 : 7.0.044 (Gargrove)  
Ideal geometry (proteins) : Engh & Huber (2001)  
Ideal geometry (DNA, RNA) : Parkinson et al. (1996)  
Validation Pipeline (wwPDB-VP) : 2.36

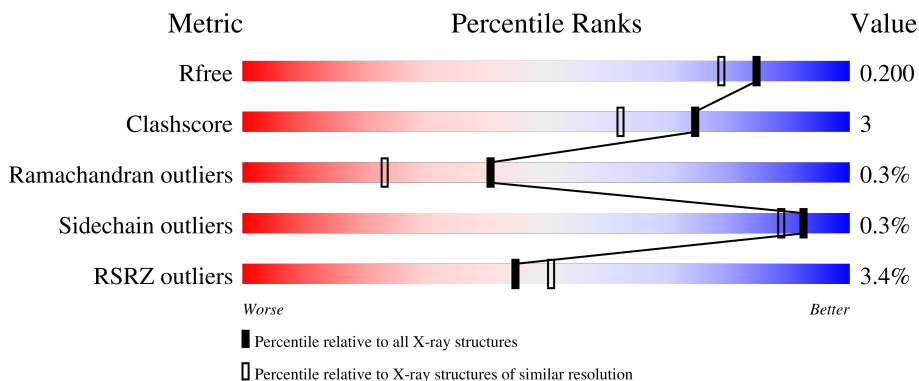
# 1 Overall quality at a glance

The following experimental techniques were used to determine the structure:

*X-RAY DIFFRACTION*

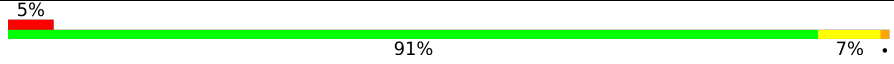
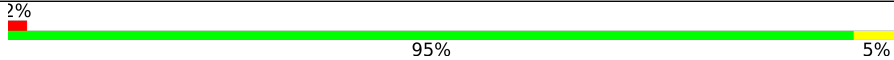
The reported resolution of this entry is 1.73 Å.

Percentile scores (ranging between 0-100) for global validation metrics of the entry are shown in the following graphic. The table shows the number of entries on which the scores are based.



Metric	Whole archive (#Entries)	Similar resolution (#Entries, resolution range(Å))
$R_{free}$	130704	3764 (1.76-1.72)
Clashscore	141614	3923 (1.76-1.72)
Ramachandran outliers	138981	3878 (1.76-1.72)
Sidechain outliers	138945	3878 (1.76-1.72)
RSRZ outliers	127900	3705 (1.76-1.72)

The table below summarises the geometric issues observed across the polymeric chains and their fit to the electron density. The red, orange, yellow and green segments of the lower bar indicate the fraction of residues that contain outliers for  $\geq 3$ , 2, 1 and 0 types of geometric quality criteria respectively. A grey segment represents the fraction of residues that are not modelled. The numeric value for each fraction is indicated below the corresponding segment, with a dot representing fractions  $\leq 5\%$ . The upper red bar (where present) indicates the fraction of residues that have poor fit to the electron density. The numeric value is given above the bar.

Mol	Chain	Length	Quality of chain
1	A	457	
1	B	457	

## 2 Entry composition [i](#)

There are 7 unique types of molecules in this entry. The entry contains 8338 atoms, of which 0 are hydrogens and 0 are deuteriums.

In the tables below, the ZeroOcc column contains the number of atoms modelled with zero occupancy, the AltConf column contains the number of residues with at least one atom in alternate conformation and the Trace column contains the number of residues modelled with at most 2 atoms.

- Molecule 1 is a protein called Bifunctional cytochrome P450/NADPH-P450 reductase.

Mol	Chain	Residues	Atoms					ZeroOcc	AltConf	Trace
			Total	C	N	O	S			
1	A	456	Total 3716	C 2373	N 635	O 691	S 17	0	5	0
1	B	457	Total 3712	C 2369	N 631	O 695	S 17	0	4	0

There are 4 discrepancies between the modelled and reference sequences:

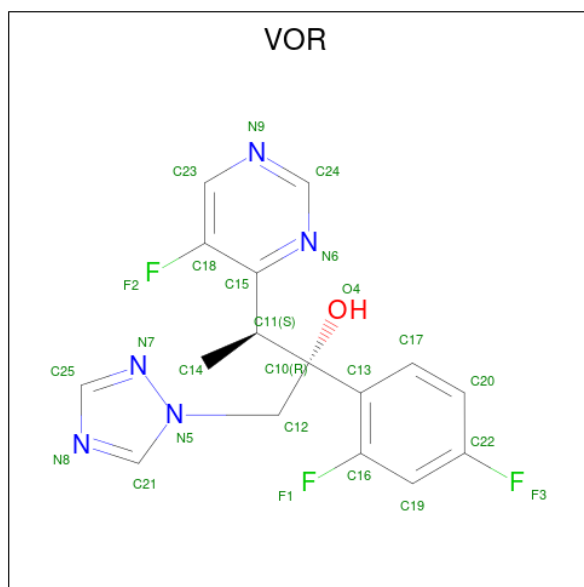
Chain	Residue	Modelled	Actual	Comment	Reference
A	82	PHE	ALA	engineered mutation	UNP P14779
A	87	VAL	PHE	engineered mutation	UNP P14779
B	82	PHE	ALA	engineered mutation	UNP P14779
B	87	VAL	PHE	engineered mutation	UNP P14779

- Molecule 2 is PROTOPORPHYRIN IX CONTAINING FE (three-letter code: HEM) (formula:  $C_{34}H_{32}FeN_4O_4$ ).



Mol	Chain	Residues	Atoms				ZeroOcc	AltConf	
2	A	1	Total	C	Fe	N	O	0	0
			43	34	1	4	4		
2	B	1	Total	C	Fe	N	O	0	0
			43	34	1	4	4		

- Molecule 3 is Voriconazole (three-letter code: VOR) (formula:  $C_{16}H_{14}F_3N_5O$ ) (labeled as "Ligand of Interest" by depositor).



Mol	Chain	Residues	Atoms				ZeroOcc	AltConf	
3	A	1	Total	C	F	N	O	0	0
			25	16	3	5	1		
3	B	1	Total	C	F	N	O	0	0
			25	16	3	5	1		

- Molecule 4 is PHOSPHATE ION (three-letter code: PO4) (formula:  $O_4P$ ).



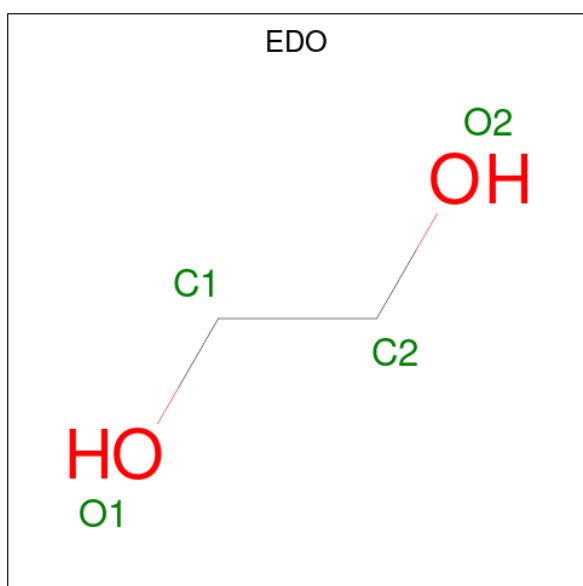
Mol	Chain	Residues	Atoms	ZeroOcc	AltConf
4	A	1	Total O P 5 4 1	0	0
4	A	1	Total O P 5 4 1	0	0
4	A	1	Total O P 5 4 1	0	0
4	B	1	Total O P 5 4 1	0	0
4	B	1	Total O P 5 4 1	0	0

- Molecule 5 is GLYCEROL (three-letter code: GOL) (formula: C<sub>3</sub>H<sub>8</sub>O<sub>3</sub>).



Mol	Chain	Residues	Atoms			ZeroOcc	AltConf
5	A	1	Total	C	O	0	1
			12	6	6		
5	A	1	Total	C	O	0	0
			6	3	3		
5	A	1	Total	C	O	0	0
			6	3	3		
5	B	1	Total	C	O	0	0
			6	3	3		

- Molecule 6 is 1,2-ETHANEDIOL (three-letter code: EDO) (formula: C<sub>2</sub>H<sub>6</sub>O<sub>2</sub>).



Mol	Chain	Residues	Atoms			ZeroOcc	AltConf
6	A	1	Total	C	O	0	0
			4	2	2		

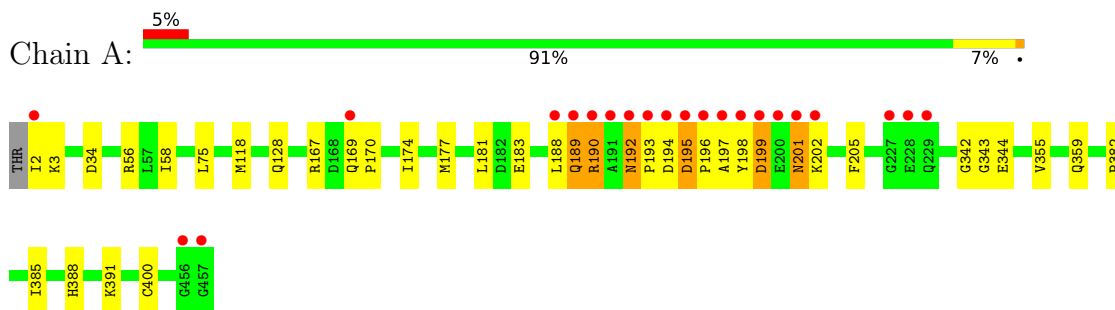
- Molecule 7 is water.

Mol	Chain	Residues	Atoms		ZeroOcc	AltConf
7	A	326	Total	O	0	0
			326	326		
7	B	389	Total	O	0	0
			389	389		

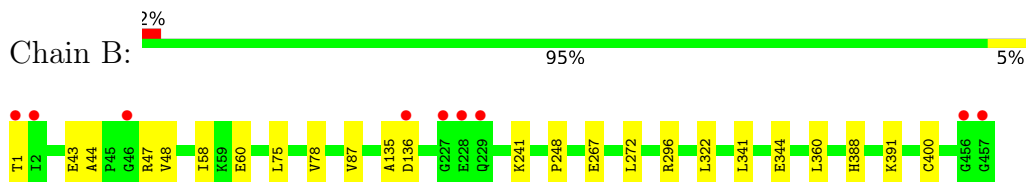
### 3 Residue-property plots [i](#)

These plots are drawn for all protein, RNA, DNA and oligosaccharide chains in the entry. The first graphic for a chain summarises the proportions of the various outlier classes displayed in the second graphic. The second graphic shows the sequence view annotated by issues in geometry and electron density. Residues are color-coded according to the number of geometric quality criteria for which they contain at least one outlier: green = 0, yellow = 1, orange = 2 and red = 3 or more. A red dot above a residue indicates a poor fit to the electron density ( $RSRZ > 2$ ). Stretches of 2 or more consecutive residues without any outlier are shown as a green connector. Residues present in the sample, but not in the model, are shown in grey.

- Molecule 1: Bifunctional cytochrome P450/NADPH-P450 reductase



- Molecule 1: Bifunctional cytochrome P450/NADPH-P450 reductase



## 4 Data and refinement statistics i

Property	Value	Source
Space group	P 1 21 1	Depositor
Cell constants a, b, c, $\alpha$ , $\beta$ , $\gamma$	59.85Å 150.01Å 61.07Å 90.00° 96.85° 90.00°	Depositor
Resolution (Å)	60.63 – 1.73 60.63 – 1.73	Depositor EDS
% Data completeness (in resolution range)	90.6 (60.63-1.73) 90.6 (60.63-1.73)	Depositor EDS
$R_{merge}$	(Not available)	Depositor
$R_{sym}$	(Not available)	Depositor
$\langle I/\sigma(I) \rangle$ <sup>1</sup>	2.11 (at 1.73Å)	Xtrriage
Refinement program	PHENIX (1.10.1_2155: ???)	Depositor
R, $R_{free}$	0.161 , 0.200 0.161 , 0.200	Depositor DCC
$R_{free}$ test set	4831 reflections (4.84%)	wwPDB-VP
Wilson B-factor (Å <sup>2</sup> )	21.2	Xtrriage
Anisotropy	0.295	Xtrriage
Bulk solvent $k_{sol}$ (e/Å <sup>3</sup> ), $B_{sol}$ (Å <sup>2</sup> )	0.34 , 44.7	EDS
L-test for twinning <sup>2</sup>	$\langle  L  \rangle = 0.49$ , $\langle L^2 \rangle = 0.32$	Xtrriage
Estimated twinning fraction	0.023 for l,-k,h	Xtrriage
$F_o, F_c$ correlation	0.97	EDS
Total number of atoms	8338	wwPDB-VP
Average B, all atoms (Å <sup>2</sup> )	26.0	wwPDB-VP

Xtrriage's analysis on translational NCS is as follows: *The largest off-origin peak in the Patterson function is 4.63% of the height of the origin peak. No significant pseudotranslation is detected.*

<sup>1</sup>Intensities estimated from amplitudes.

<sup>2</sup>Theoretical values of  $\langle |L| \rangle$ ,  $\langle L^2 \rangle$  for acentric reflections are 0.5, 0.333 respectively for untwinned datasets, and 0.375, 0.2 for perfectly twinned datasets.



## 5 Model quality [i](#)

### 5.1 Standard geometry [i](#)

Bond lengths and bond angles in the following residue types are not validated in this section: EDO, HEM, VOR, GOL, PO4

The Z score for a bond length (or angle) is the number of standard deviations the observed value is removed from the expected value. A bond length (or angle) with  $|Z| > 5$  is considered an outlier worth inspection. RMSZ is the root-mean-square of all Z scores of the bond lengths (or angles).

Mol	Chain	Bond lengths		Bond angles	
		RMSZ	# Z  >5	RMSZ	# Z  >5
1	A	0.45	0/3806	0.64	2/5140 (0.0%)
1	B	0.48	0/3802	0.61	0/5136
All	All	0.46	0/7608	0.63	2/10276 (0.0%)

Chiral center outliers are detected by calculating the chiral volume of a chiral center and verifying if the center is modelled as a planar moiety or with the opposite hand. A planarity outlier is detected by checking planarity of atoms in a peptide group, atoms in a mainchain group or atoms of a sidechain that are expected to be planar.

Mol	Chain	#Chirality outliers	#Planarity outliers
1	A	0	1

There are no bond length outliers.

All (2) bond angle outliers are listed below:

Mol	Chain	Res	Type	Atoms	Z	Observed( $^{\circ}$ )	Ideal( $^{\circ}$ )
1	A	199	ASP	CB-CG-OD1	-11.61	107.85	118.30
1	A	199	ASP	CB-CG-OD2	7.95	125.45	118.30

There are no chirality outliers.

All (1) planarity outliers are listed below:

Mol	Chain	Res	Type	Group
1	A	189	GLN	Peptide

### 5.2 Too-close contacts [i](#)

In the following table, the Non-H and H(model) columns list the number of non-hydrogen atoms and hydrogen atoms in the chain respectively. The H(added) column lists the number of hydrogen

atoms added and optimized by MolProbity. The Clashes column lists the number of clashes within the asymmetric unit, whereas Symm-Clashes lists symmetry-related clashes.

Mol	Chain	Non-H	H(model)	H(added)	Clashes	Symm-Clashes
1	A	3716	0	3694	35	0
1	B	3712	0	3683	14	0
2	A	43	0	30	1	0
2	B	43	0	30	2	0
3	A	25	0	14	0	0
3	B	25	0	14	1	0
4	A	15	0	0	0	0
4	B	10	0	0	0	0
5	A	24	0	31	1	0
5	B	6	0	8	0	0
6	A	4	0	6	0	0
7	A	326	0	0	7	1
7	B	389	0	0	1	0
All	All	8338	0	7510	49	1

The all-atom clashscore is defined as the number of clashes found per 1000 atoms (including hydrogen atoms). The all-atom clashscore for this structure is 3.

The worst 5 of 49 close contacts within the same asymmetric unit are listed below, sorted by their clash magnitude.

Atom-1	Atom-2	Interatomic distance (Å)	Clash overlap (Å)
1:A:199:ASP:HB2	1:A:202:LYS:HA	1.50	0.94
1:A:199:ASP:OD1	1:A:205:PHE:N	2.11	0.83
1:A:195:ASP:O	1:A:201:ASN:ND2	2.16	0.79
1:B:296[B]:ARG:NH1	7:B:601:HOH:O	2.17	0.78
1:A:169:GLN:NE2	7:A:601:HOH:O	2.19	0.75

All (1) symmetry-related close contacts are listed below. The label for Atom-2 includes the symmetry operator and encoded unit-cell translations to be applied.

Atom-1	Atom-2	Interatomic distance (Å)	Clash overlap (Å)
7:A:608:HOH:O	7:A:855:HOH:O[1_455]	1.99	0.21

## 5.3 Torsion angles [i](#)

### 5.3.1 Protein backbone [i](#)

In the following table, the Percentiles column shows the percent Ramachandran outliers of the chain as a percentile score with respect to all X-ray entries followed by that with respect to entries of similar resolution.

The Analysed column shows the number of residues for which the backbone conformation was analysed, and the total number of residues.

Mol	Chain	Analysed	Favoured	Allowed	Outliers	Percentiles	
1	A	457/457 (100%)	435 (95%)	19 (4%)	3 (1%)	22	8
1	B	457/457 (100%)	447 (98%)	10 (2%)	0	100	100
All	All	914/914 (100%)	882 (96%)	29 (3%)	3 (0%)	41	23

All (3) Ramachandran outliers are listed below:

Mol	Chain	Res	Type
1	A	190	ARG
1	A	197	ALA
1	A	195	ASP

### 5.3.2 Protein sidechains [i](#)

In the following table, the Percentiles column shows the percent sidechain outliers of the chain as a percentile score with respect to all X-ray entries followed by that with respect to entries of similar resolution.

The Analysed column shows the number of residues for which the sidechain conformation was analysed, and the total number of residues.

Mol	Chain	Analysed	Rotameric	Outliers	Percentiles	
1	A	404/400 (101%)	402 (100%)	2 (0%)	88	83
1	B	404/400 (101%)	404 (100%)	0	100	100
All	All	808/800 (101%)	806 (100%)	2 (0%)	92	90

All (2) residues with a non-rotameric sidechain are listed below:

Mol	Chain	Res	Type
1	A	192	ASN
1	A	201	ASN

Sometimes sidechains can be flipped to improve hydrogen bonding and reduce clashes. All (2) such sidechains are listed below:

Mol	Chain	Res	Type
1	A	21	ASN
1	A	201	ASN

### 5.3.3 RNA [i](#)

There are no RNA molecules in this entry.

## 5.4 Non-standard residues in protein, DNA, RNA chains [i](#)

There are no non-standard protein/DNA/RNA residues in this entry.

## 5.5 Carbohydrates [i](#)

There are no monosaccharides in this entry.

## 5.6 Ligand geometry [i](#)

15 ligands are modelled in this entry.

In the following table, the Counts columns list the number of bonds (or angles) for which Mogul statistics could be retrieved, the number of bonds (or angles) that are observed in the model and the number of bonds (or angles) that are defined in the Chemical Component Dictionary. The Link column lists molecule types, if any, to which the group is linked. The Z score for a bond length (or angle) is the number of standard deviations the observed value is removed from the expected value. A bond length (or angle) with  $|Z| > 2$  is considered an outlier worth inspection. RMSZ is the root-mean-square of all Z scores of the bond lengths (or angles).

Mol	Type	Chain	Res	Link	Bond lengths			Bond angles		
					Counts	RMSZ	$\# Z  > 2$	Counts	RMSZ	$\# Z  > 2$
5	GOL	A	507	-	5,5,5	0.31	0	5,5,5	0.43	0
3	VOR	B	502	2	24,27,27	1.04	1 (4%)	33,39,39	4.41	18 (54%)
5	GOL	A	506[A]	-	5,5,5	0.44	0	5,5,5	0.25	0
6	EDO	A	509	-	3,3,3	0.46	0	2,2,2	0.32	0
4	PO4	B	503	-	4,4,4	0.89	0	6,6,6	0.41	0
5	GOL	A	506[B]	-	5,5,5	0.39	0	5,5,5	0.69	0
5	GOL	A	508	-	5,5,5	0.35	0	5,5,5	0.58	0
4	PO4	A	503	-	4,4,4	0.89	0	6,6,6	0.41	0
5	GOL	B	505	-	5,5,5	0.25	0	5,5,5	0.47	0
4	PO4	A	505	-	4,4,4	0.85	0	6,6,6	0.31	0

Mol	Type	Chain	Res	Link	Bond lengths			Bond angles		
					Counts	RMSZ	# Z  > 2	Counts	RMSZ	# Z  > 2
2	HEM	B	501	3,1	41,50,50	1.46	5 (12%)	45,82,82	1.79	13 (28%)
3	VOR	A	502	2	24,27,27	1.06	1 (4%)	33,39,39	5.05	19 (57%)
2	HEM	A	501	3,1	41,50,50	1.48	5 (12%)	45,82,82	1.34	3 (6%)
4	PO4	B	504	-	4,4,4	0.64	0	6,6,6	0.62	0
4	PO4	A	504	-	4,4,4	0.85	0	6,6,6	0.55	0

In the following table, the Chirals column lists the number of chiral outliers, the number of chiral centers analysed, the number of these observed in the model and the number defined in the Chemical Component Dictionary. Similar counts are reported in the Torsion and Rings columns. '-' means no outliers of that kind were identified.

Mol	Type	Chain	Res	Link	Chirals	Torsions	Rings
5	GOL	A	507	-	-	2/4/4/4	-
3	VOR	B	502	2	-	3/21/21/21	0/3/3/3
5	GOL	A	506[A]	-	-	2/4/4/4	-
6	EDO	A	509	-	-	0/1/1/1	-
5	GOL	A	506[B]	-	-	4/4/4/4	-
5	GOL	A	508	-	-	2/4/4/4	-
5	GOL	B	505	-	-	0/4/4/4	-
2	HEM	B	501	3,1	-	2/12/54/54	-
3	VOR	A	502	2	-	4/21/21/21	0/3/3/3
2	HEM	A	501	3,1	-	2/12/54/54	-

The worst 5 of 12 bond length outliers are listed below:

Mol	Chain	Res	Type	Atoms	Z	Observed(Å)	Ideal(Å)
2	A	501	HEM	C3C-CAC	4.35	1.56	1.47
3	B	502	VOR	C18-C15	-3.54	1.32	1.38
2	A	501	HEM	C3C-C2C	-3.44	1.35	1.40
2	B	501	HEM	C3C-CAC	3.34	1.54	1.47
2	B	501	HEM	CAB-C3B	3.12	1.55	1.47

The worst 5 of 53 bond angle outliers are listed below:

Mol	Chain	Res	Type	Atoms	Z	Observed(°)	Ideal(°)
3	A	502	VOR	F2-C18-C15	20.95	138.72	120.18
3	B	502	VOR	F2-C18-C15	17.54	135.69	120.18
3	A	502	VOR	F2-C18-C23	-9.69	102.01	118.47
3	A	502	VOR	N9-C24-N6	-8.15	118.74	127.70
3	B	502	VOR	F2-C18-C23	-7.79	105.22	118.47

There are no chirality outliers.

5 of 21 torsion outliers are listed below:

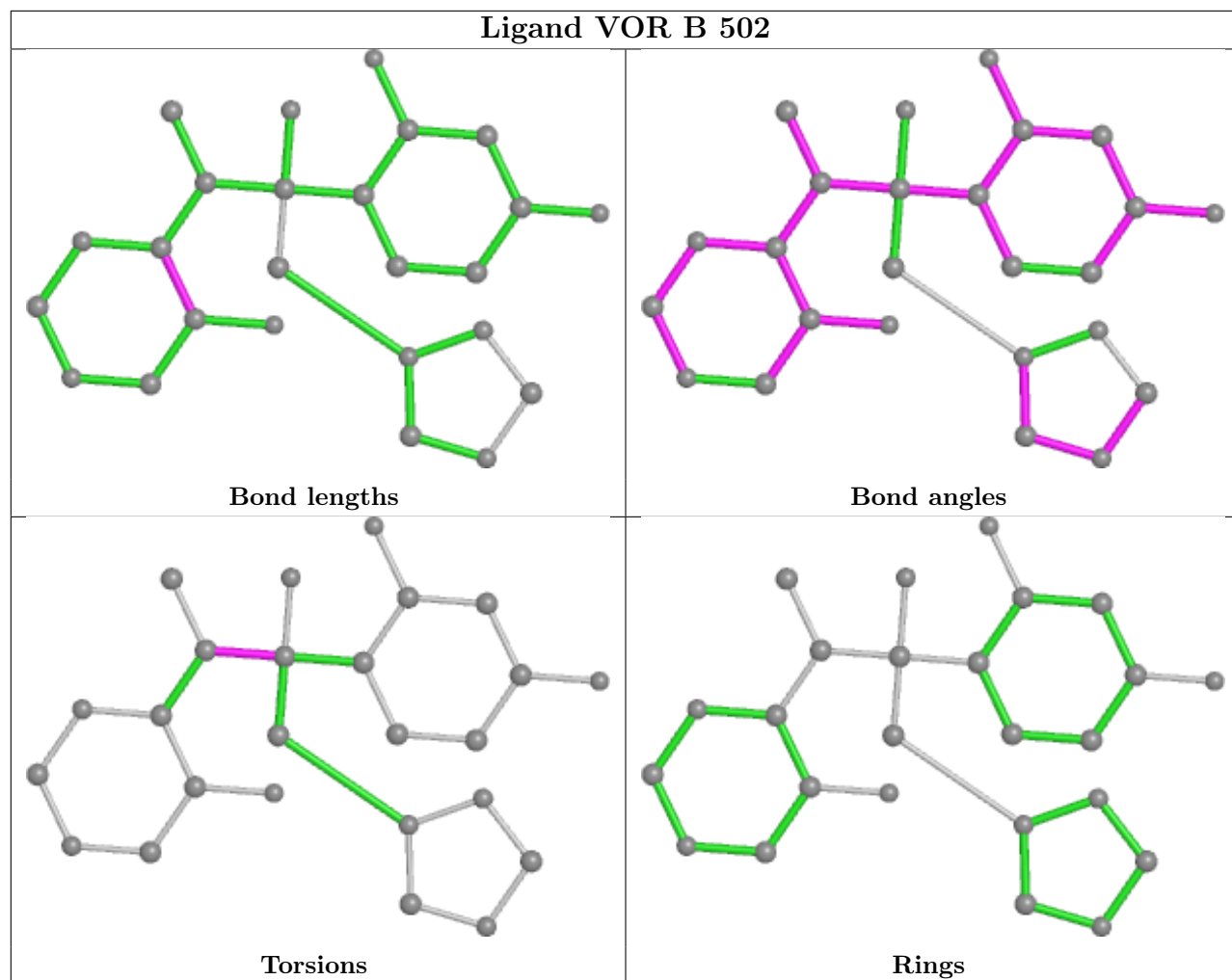
Mol	Chain	Res	Type	Atoms
3	A	502	VOR	O4-C10-C11-C14
3	A	502	VOR	C12-C10-C11-C15
3	A	502	VOR	C13-C10-C11-C15
3	B	502	VOR	O4-C10-C11-C14
3	B	502	VOR	C12-C10-C11-C15

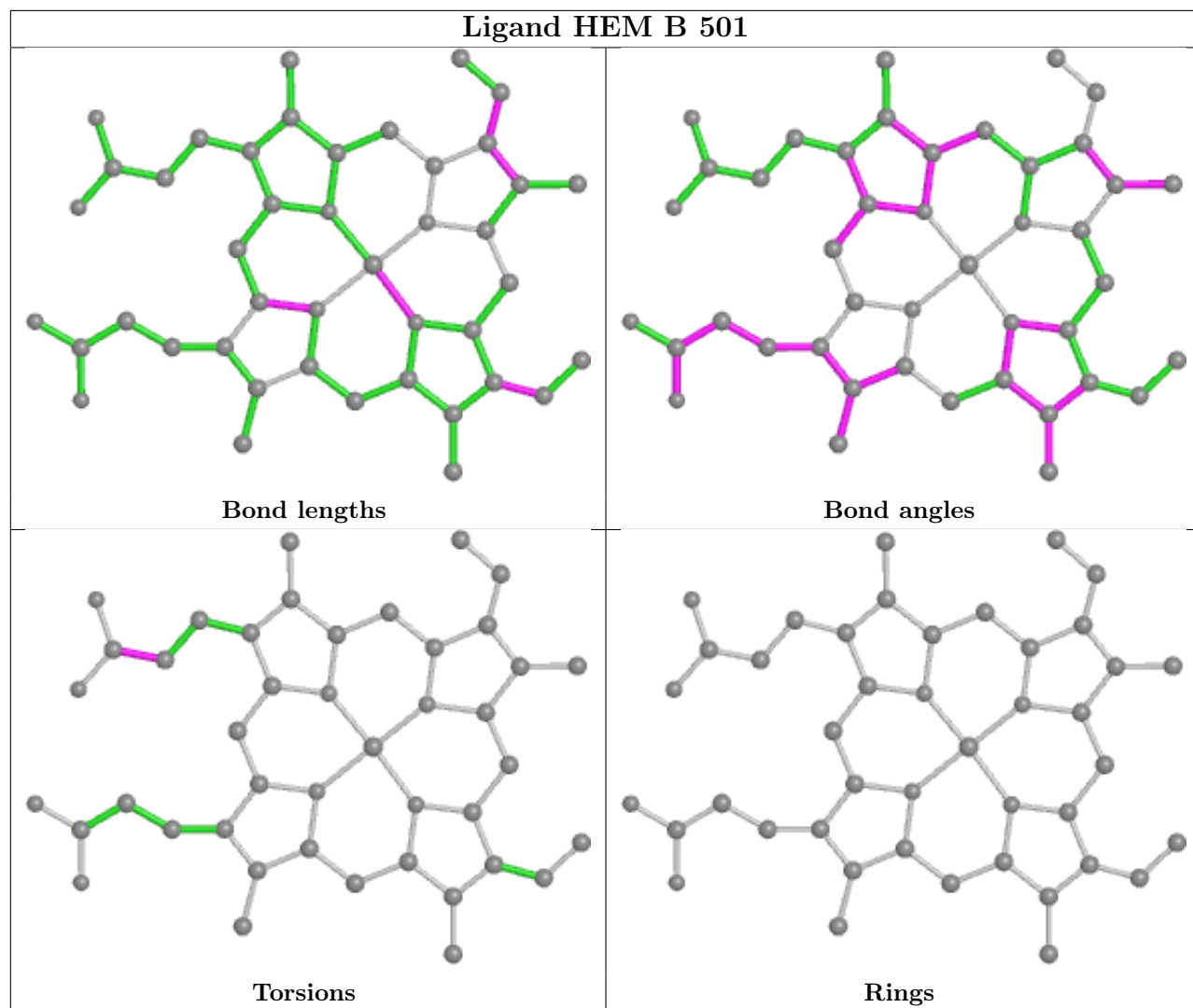
There are no ring outliers.

4 monomers are involved in 5 short contacts:

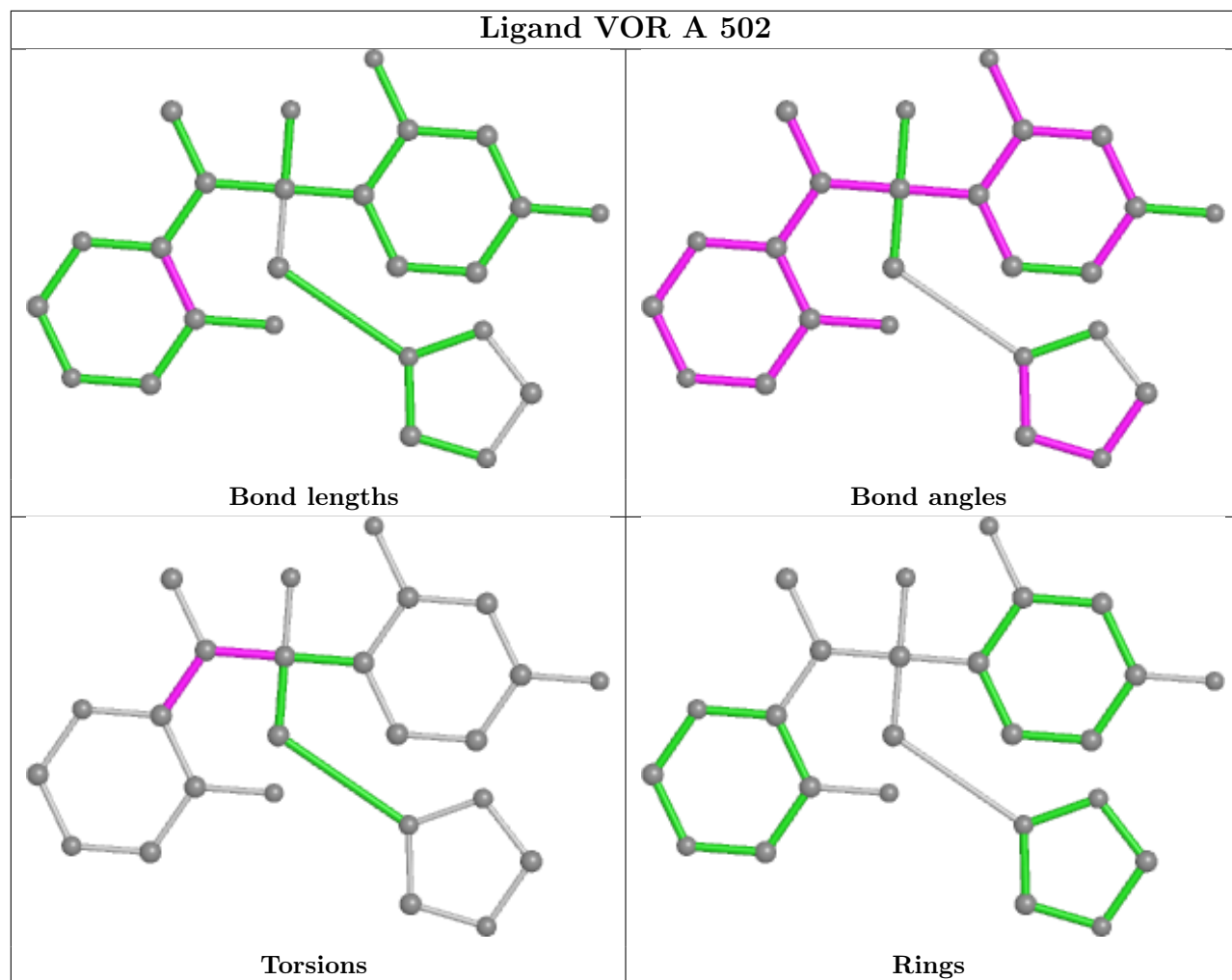
Mol	Chain	Res	Type	Clashes	Symm-Clashes
3	B	502	VOR	1	0
5	A	508	GOL	1	0
2	B	501	HEM	2	0
2	A	501	HEM	1	0

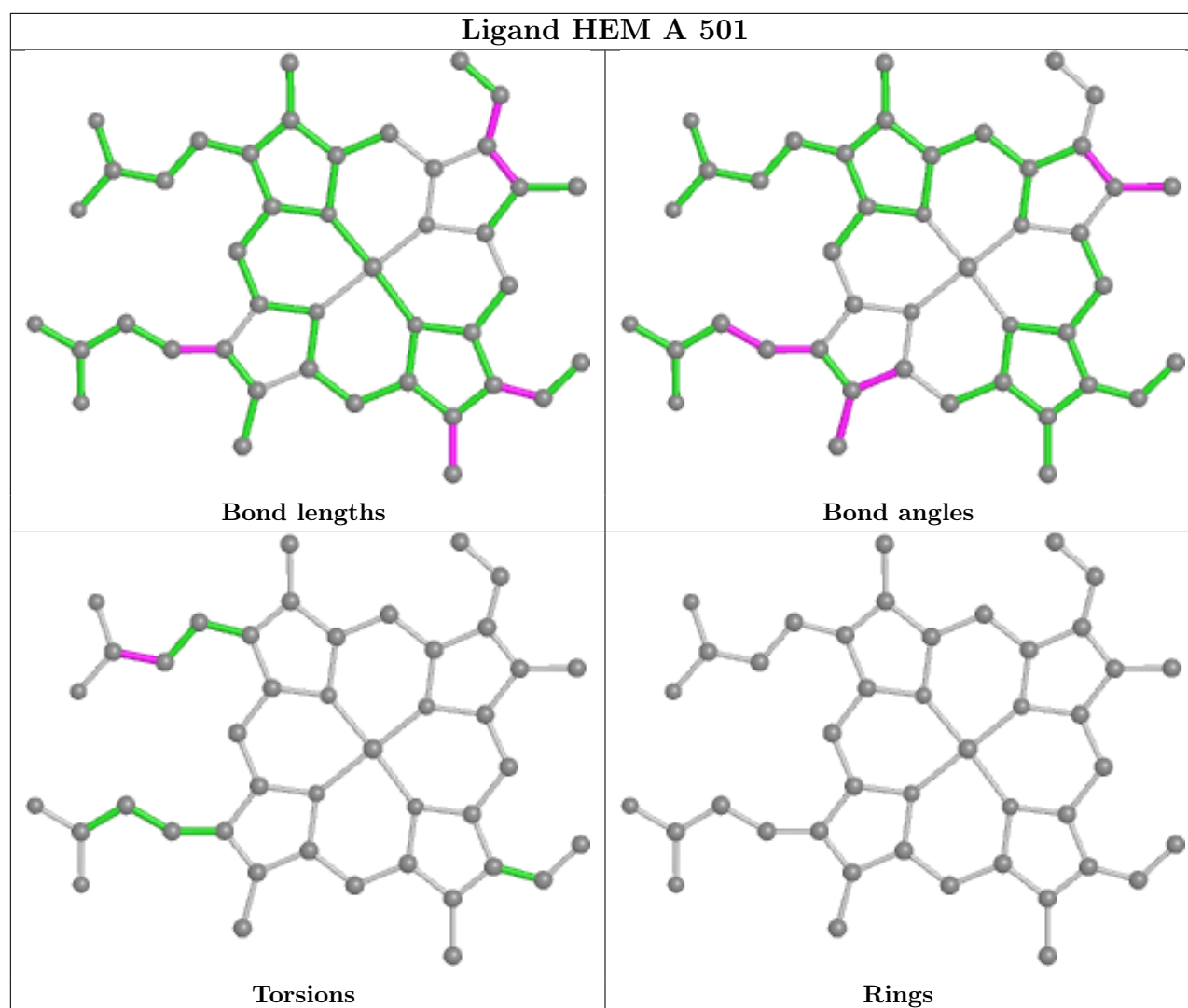
The following is a two-dimensional graphical depiction of Mogul quality analysis of bond lengths, bond angles, torsion angles, and ring geometry for all instances of the Ligand of Interest. In addition, ligands with molecular weight > 250 and outliers as shown on the validation Tables will also be included. For torsion angles, if less than 5% of the Mogul distribution of torsion angles is within 10 degrees of the torsion angle in question, then that torsion angle is considered an outlier. Any bond that is central to one or more torsion angles identified as an outlier by Mogul will be highlighted in the graph. For rings, the root-mean-square deviation (RMSD) between the ring in question and similar rings identified by Mogul is calculated over all ring torsion angles. If the average RMSD is greater than 60 degrees and the minimal RMSD between the ring in question and any Mogul-identified rings is also greater than 60 degrees, then that ring is considered an outlier. The outliers are highlighted in purple. The color gray indicates Mogul did not find sufficient equivalents in the CSD to analyse the geometry.











## 5.7 Other polymers [i](#)

There are no such residues in this entry.

## 5.8 Polymer linkage issues [i](#)

The following chains have linkage breaks:

Mol	Chain	Number of breaks
1	B	1
1	A	1

All chain breaks are listed below:

Model	Chain	Residue-1	Atom-1	Residue-2	Atom-2	Distance (Å)
1	B	455:LEU	C	456:GLY	N	6.26
1	A	455:LEU	C	456:GLY	N	5.31

## 6 Fit of model and data [i](#)

### 6.1 Protein, DNA and RNA chains [i](#)

In the following table, the column labelled ‘#RSRZ> 2’ contains the number (and percentage) of RSRZ outliers, followed by percent RSRZ outliers for the chain as percentile scores relative to all X-ray entries and entries of similar resolution. The OWAB column contains the minimum, median, 95<sup>th</sup> percentile and maximum values of the occupancy-weighted average B-factor per residue. The column labelled ‘Q< 0.9’ lists the number of (and percentage) of residues with an average occupancy less than 0.9.

Mol	Chain	Analysed	<RSRZ>	#RSRZ>2	OWAB(Å <sup>2</sup> )	Q<0.9
1	A	456/457 (99%)	0.03	22 (4%) 30 35	15, 24, 53, 90	0
1	B	457/457 (100%)	-0.21	9 (1%) 65 71	14, 22, 41, 78	0
All	All	913/914 (99%)	-0.09	31 (3%) 45 51	14, 23, 47, 90	0

The worst 5 of 31 RSRZ outliers are listed below:

Mol	Chain	Res	Type	RSRZ
1	A	190	ARG	11.6
1	A	198	TYR	8.2
1	A	195	ASP	6.6
1	A	457	GLY	5.8
1	A	200	GLU	5.7

### 6.2 Non-standard residues in protein, DNA, RNA chains [i](#)

There are no non-standard protein/DNA/RNA residues in this entry.

### 6.3 Carbohydrates [i](#)

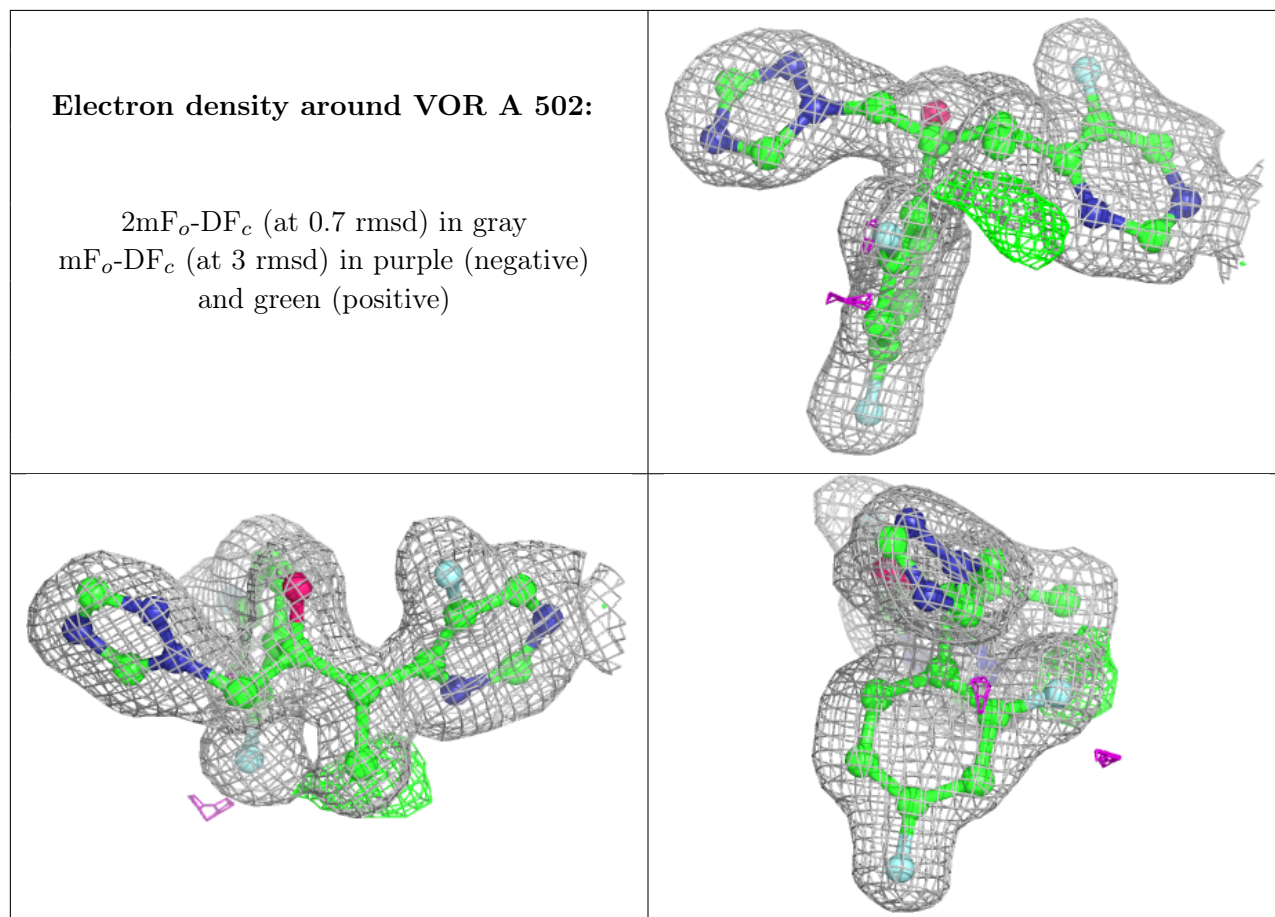
There are no monosaccharides in this entry.

### 6.4 Ligands [i](#)

In the following table, the Atoms column lists the number of modelled atoms in the group and the number defined in the chemical component dictionary. The B-factors column lists the minimum, median, 95<sup>th</sup> percentile and maximum values of B factors of atoms in the group. The column labelled ‘Q< 0.9’ lists the number of atoms with occupancy less than 0.9.

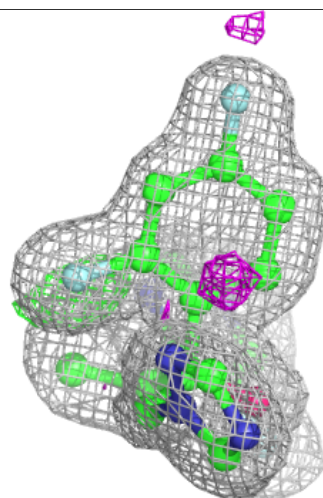
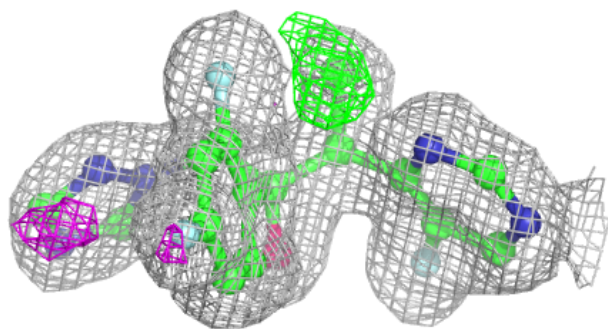
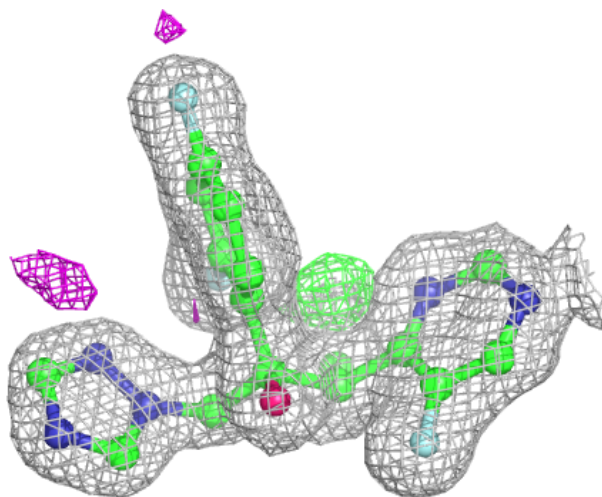
Mol	Type	Chain	Res	Atoms	RSCC	RSR	B-factors( $\text{\AA}^2$ )	Q<0.9
5	GOL	A	508	6/6	0.68	0.33	44,55,55,68	0
4	PO4	A	504	5/5	0.71	0.28	55,65,89,99	0
4	PO4	B	504	5/5	0.83	0.26	44,45,77,82	0
5	GOL	A	506[B]	6/6	0.86	0.19	24,25,30,35	6
5	GOL	A	506[A]	6/6	0.86	0.19	19,23,31,41	6
4	PO4	A	505	5/5	0.87	0.31	34,69,79,88	0
5	GOL	B	505	6/6	0.87	0.16	35,40,43,52	0
4	PO4	B	503	5/5	0.88	0.19	65,65,82,90	0
5	GOL	A	507	6/6	0.88	0.17	26,50,52,54	0
6	EDO	A	509	4/4	0.88	0.17	45,59,65,66	0
3	VOR	A	502	25/25	0.92	0.11	17,27,33,35	0
4	PO4	A	503	5/5	0.93	0.12	47,62,74,81	0
3	VOR	B	502	25/25	0.95	0.11	14,22,27,28	0
2	HEM	B	501	43/43	0.98	0.09	11,13,16,19	0
2	HEM	A	501	43/43	0.98	0.08	12,16,19,19	0

The following is a graphical depiction of the model fit to experimental electron density of all instances of the Ligand of Interest. In addition, ligands with molecular weight > 250 and outliers as shown on the geometry validation Tables will also be included. Each fit is shown from different orientation to approximate a three-dimensional view.



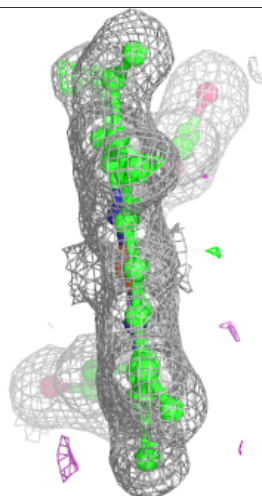
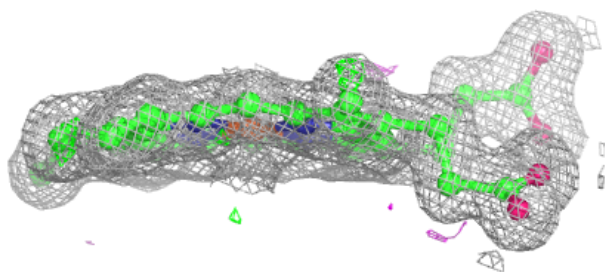
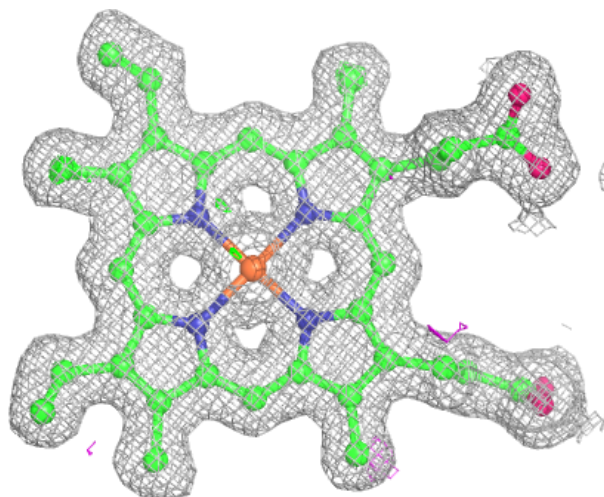
**Electron density around VOR B 502:**

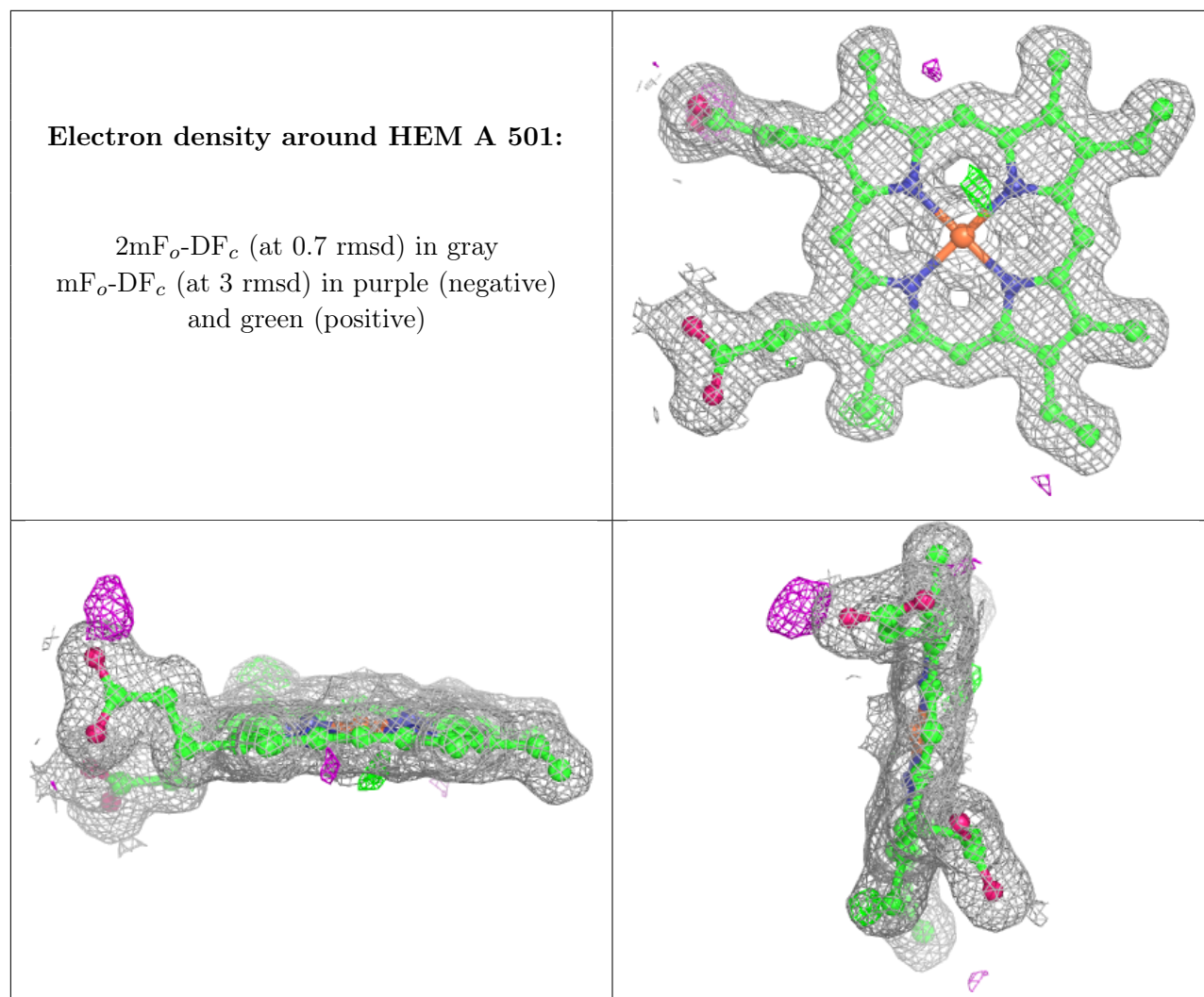
$2mF_o-DF_c$  (at 0.7 rmsd) in gray  
 $mF_o-DF_c$  (at 3 rmsd) in purple (negative)  
and green (positive)



**Electron density around HEM B 501:**

$2mF_o-DF_c$  (at 0.7 rmsd) in gray  
 $mF_o-DF_c$  (at 3 rmsd) in purple (negative)  
and green (positive)





## 6.5 Other polymers [i](#)

There are no such residues in this entry.