



wwPDB X-ray Structure Validation Summary Report ⓘ

Jan 7, 2024 – 10:28 pm GMT

PDB ID : 6H12
Title : Crystal structure of TcACHE complexed to 1-(6-Oxo-1,2,3,4,6,10b-hexahydro pyrido[2,1-a]isoindol-10-yl)-3-(4-(((1-(2-((1,2,3,4-tetrahydroacridin-9-yl)amino)ethyl)-1H-1,2,3-triazol-4-yl)methoxy)methyl)pyridin-2-yl)urea
Authors : Coquelle, N.; Colletier, J.P.
Deposited on : 2018-07-10
Resolution : 2.20 Å(reported)

This is a wwPDB X-ray Structure Validation Summary Report for a publicly released PDB entry.

We welcome your comments at validation@mail.wwpdb.org

A user guide is available at

<https://www.wwpdb.org/validation/2017/XrayValidationReportHelp>

with specific help available everywhere you see the ⓘ symbol.

The types of validation reports are described at

<http://www.wwpdb.org/validation/2017/FAQs#types>.

The following versions of software and data (see [references ⓘ](#)) were used in the production of this report:

MolProbity : 4.02b-467
Mogul : 1.8.4, CSD as541be (2020)
Xtriage (Phenix) : 1.13
EDS : 2.36
buster-report : 1.1.7 (2018)
Percentile statistics : 20191225.v01 (using entries in the PDB archive December 25th 2019)
Refmac : 5.8.0158
CCP4 : 7.0.044 (Gargrove)
Ideal geometry (proteins) : Engh & Huber (2001)
Ideal geometry (DNA, RNA) : Parkinson et al. (1996)
Validation Pipeline (wwPDB-VP) : 2.36

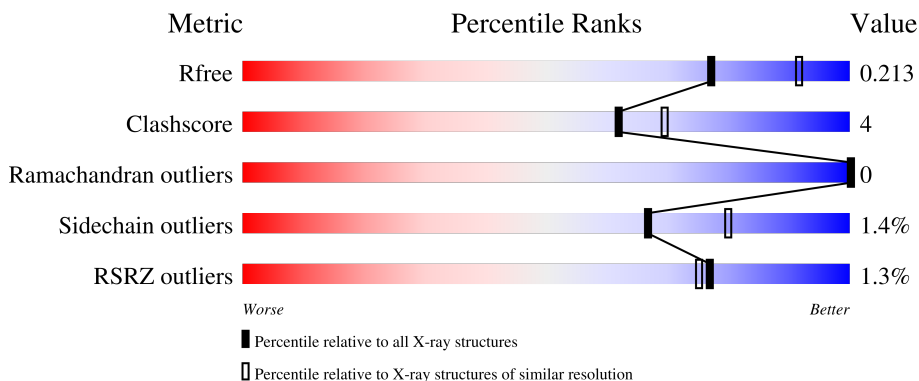
1 Overall quality at a glance

The following experimental techniques were used to determine the structure:

X-RAY DIFFRACTION

The reported resolution of this entry is 2.20 Å.

Percentile scores (ranging between 0-100) for global validation metrics of the entry are shown in the following graphic. The table shows the number of entries on which the scores are based.



Metric	Whole archive (#Entries)	Similar resolution (#Entries, resolution range(Å))
R_{free}	130704	4898 (2.20-2.20)
Clashscore	141614	5594 (2.20-2.20)
Ramachandran outliers	138981	5503 (2.20-2.20)
Sidechain outliers	138945	5504 (2.20-2.20)
RSRZ outliers	127900	4800 (2.20-2.20)

The table below summarises the geometric issues observed across the polymeric chains and their fit to the electron density. The red, orange, yellow and green segments of the lower bar indicate the fraction of residues that contain outliers for ≥ 3 , 2, 1 and 0 types of geometric quality criteria respectively. A grey segment represents the fraction of residues that are not modelled. The numeric value for each fraction is indicated below the corresponding segment, with a dot representing fractions $\leq 5\%$. The upper red bar (where present) indicates the fraction of residues that have poor fit to the electron density. The numeric value is given above the bar.

Mol	Chain	Length	Quality of chain
1	A	565	 86% 8% 6%
1	B	565	 87% 7% 6%

The following table lists non-polymeric compounds, carbohydrate monomers and non-standard residues in protein, DNA, RNA chains that are outliers for geometric or electron-density-fit criteria:

Mol	Type	Chain	Res	Chirality	Geometry	Clashes	Electron density
10	FJK	A	626	X	-	-	-
10	FJK	B	619	X	-	-	-
2	MES	A	611	-	-	X	-
7	PEG	B	613	-	-	X	-

2 Entry composition [i](#)

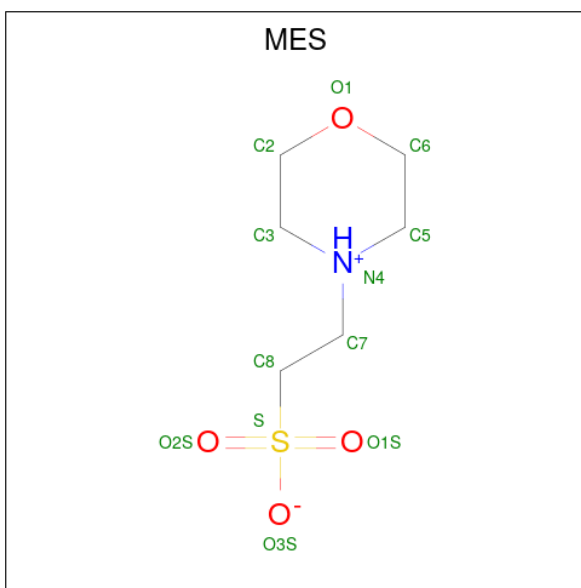
There are 11 unique types of molecules in this entry. The entry contains 9735 atoms, of which 0 are hydrogens and 0 are deuteriums.

In the tables below, the ZeroOcc column contains the number of atoms modelled with zero occupancy, the AltConf column contains the number of residues with at least one atom in alternate conformation and the Trace column contains the number of residues modelled with at most 2 atoms.

- Molecule 1 is a protein called Acetylcholinesterase.

Mol	Chain	Residues	Atoms					ZeroOcc	AltConf	Trace
			Total	C	N	O	S			
1	A	532	Total 4311	C 2765	N 736	O 788	S 22	0	11	0
1	B	532	Total 4295	C 2755	N 732	O 786	S 22	0	9	0

- Molecule 2 is 2-(N-MORPHOLINO)-ETHANESULFONIC ACID (three-letter code: MES) (formula: C₆H₁₃NO₄S).



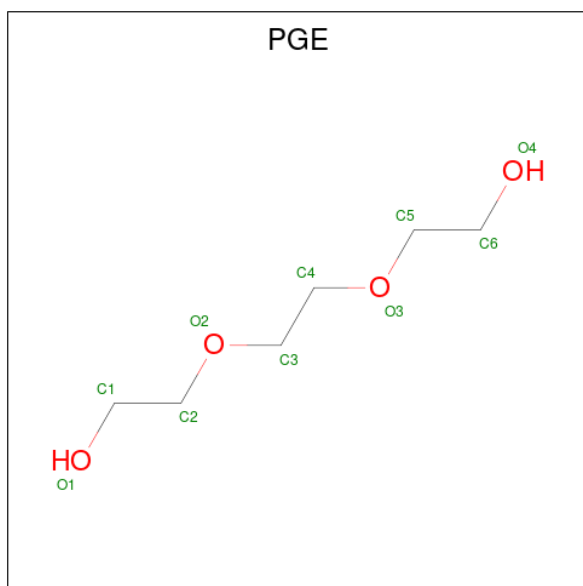
Mol	Chain	Residues	Atoms					ZeroOcc	AltConf
			Total	C	N	O	S		
2	A	1	Total 12	C 6	N 1	O 4	S 1	0	0
2	A	1	Total 12	C 6	N 1	O 4	S 1	0	0
2	A	1	Total 12	C 6	N 1	O 4	S 1	0	0
2	A	1	Total 12	C 6	N 1	O 4	S 1	0	0

- Molecule 3 is GLYCEROL (three-letter code: GOL) (formula: $C_3H_8O_3$).



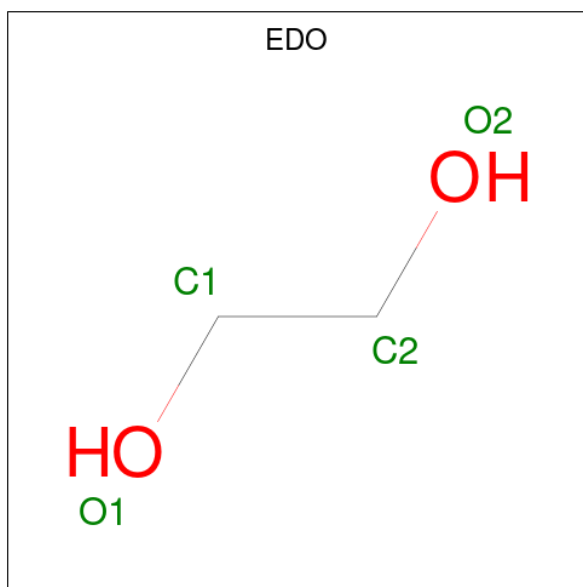
Mol	Chain	Residues	Atoms	ZeroOcc	AltConf
3	A	1	Total C O 6 3 3	0	0
3	A	1	Total C O 6 3 3	0	0
3	B	1	Total C O 6 3 3	0	0

- Molecule 4 is TRIETHYLENE GLYCOL (three-letter code: PGE) (formula: $C_6H_{14}O_4$).



Mol	Chain	Residues	Atoms			ZeroOcc	AltConf
4	A	1	Total	C	O	0	0
			10	6	4		
4	B	1	Total	C	O	0	0
			10	6	4		

- Molecule 5 is 1,2-ETHANEDIOL (three-letter code: EDO) (formula: C₂H₆O₂).



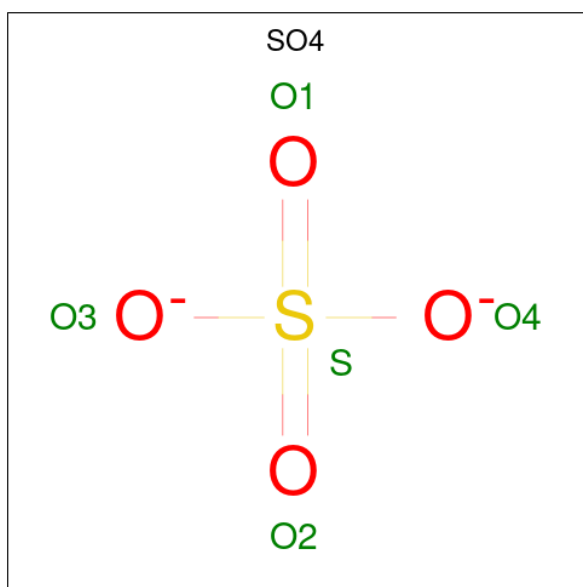
Mol	Chain	Residues	Atoms			ZeroOcc	AltConf
5	A	1	Total	C	O	0	0
			4	2	2		
5	A	1	Total	C	O	0	0
			4	2	2		
5	A	1	Total	C	O	0	0
			4	2	2		
5	A	1	Total	C	O	0	0
			4	2	2		
5	A	1	Total	C	O	0	0
			4	2	2		
5	B	1	Total	C	O	0	0
			4	2	2		
5	B	1	Total	C	O	0	0
			4	2	2		
5	B	1	Total	C	O	0	0
			4	2	2		

Continued on next page...

Continued from previous page...

Mol	Chain	Residues	Atoms			ZeroOcc	AltConf
5	B	1	Total	C	O	0	0
			4	2	2		
5	B	1	Total	C	O	0	0
			4	2	2		
5	B	1	Total	C	O	0	0
			4	2	2		

- Molecule 6 is SULFATE ION (three-letter code: SO4) (formula: O₄S).



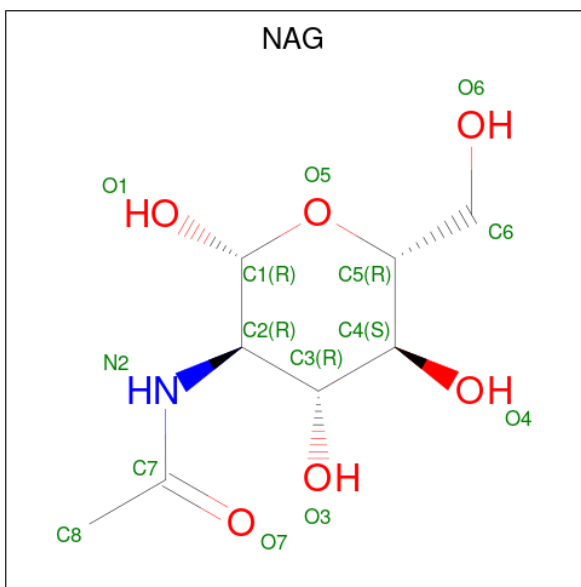
Mol	Chain	Residues	Atoms			ZeroOcc	AltConf
6	A	1	Total	O	S	0	0
			5	4	1		
6	A	1	Total	O	S	0	0
			5	4	1		
6	B	1	Total	O	S	0	0
			5	4	1		

- Molecule 7 is DI(HYDROXYETHYL)ETHER (three-letter code: PEG) (formula: C₄H₁₀O₃).



Mol	Chain	Residues	Atoms	ZeroOcc	AltConf
7	A	1	Total C O 7 4 3	0	0
7	A	1	Total C O 7 4 3	0	0
7	A	1	Total C O 7 4 3	0	0
7	A	1	Total C O 7 4 3	0	0
7	B	1	Total C O 7 4 3	0	0
7	B	1	Total C O 7 4 3	0	0
7	B	1	Total C O 7 4 3	0	0
7	B	1	Total C O 7 4 3	0	0

- Molecule 8 is 2-acetamido-2-deoxy-beta-D-glucopyranose (three-letter code: NAG) (formula: $C_8H_{15}NO_6$).



Mol	Chain	Residues	Atoms	ZeroOcc	AltConf
8	A	1	Total C N O 14 8 1 5	0	0
8	A	1	Total C N O 14 8 1 5	0	0
8	B	1	Total C N O 14 8 1 5	0	0
8	B	1	Total C N O 14 8 1 5	0	0
8	B	1	Total C N O 14 8 1 5	0	0

- Molecule 9 is CHLORIDE ION (three-letter code: CL) (formula: Cl).

Mol	Chain	Residues	Atoms	ZeroOcc	AltConf
9	A	5	Total Cl 5 5	0	0
9	B	1	Total Cl 1 1	0	0

- Molecule 10 is 1-[4-[[1-[2-(1,2,3,4,4 {a},9 {a})-hexahydroacridin-9-ylamino)ethyl]-1,2,3-triazol-4-yl]methoxymethyl]pyridin-2-yl]-3-[(10 {b} {R})-6-oxidanylidene-2,3,4,10 {b}-tetrahydro-1 {H}-pyrido[2,1-a]isoindol-10-yl]urea (three-letter code: FJK) (formula: C₃₇H₄₁N₉O₃).

4 Data and refinement statistics

Property	Value	Source
Space group	P 21 21 21	Depositor
Cell constants a, b, c, α , β , γ	91.27Å 105.09Å 149.69Å 90.00° 90.00° 90.00°	Depositor
Resolution (Å)	19.84 – 2.20 19.88 – 2.20	Depositor EDS
% Data completeness (in resolution range)	99.8 (19.84-2.20) 99.9 (19.88-2.20)	Depositor EDS
R_{merge}	0.09	Depositor
R_{sym}	(Not available)	Depositor
$\langle I/\sigma(I) \rangle$ ¹	2.68 (at 2.19Å)	Xtrriage
Refinement program	PHENIX (1.10.1_2155: ???)	Depositor
R, R_{free}	0.171 , 0.212 0.171 , 0.213	Depositor DCC
R_{free} test set	2000 reflections (2.72%)	wwPDB-VP
Wilson B-factor (Å ²)	27.4	Xtrriage
Anisotropy	0.628	Xtrriage
Bulk solvent k_{sol} (e/Å ³), B_{sol} (Å ²)	0.36 , 55.3	EDS
L-test for twinning ²	$\langle L \rangle = 0.49$, $\langle L^2 \rangle = 0.32$	Xtrriage
Estimated twinning fraction	No twinning to report.	Xtrriage
F_o, F_c correlation	0.97	EDS
Total number of atoms	9735	wwPDB-VP
Average B, all atoms (Å ²)	31.0	wwPDB-VP

Xtrriage's analysis on translational NCS is as follows: *The analyses of the Patterson function reveals a significant off-origin peak that is 44.97 % of the origin peak, indicating pseudo-translational symmetry. The chance of finding a peak of this or larger height randomly in a structure without pseudo-translational symmetry is equal to 1.4139e-04. The detected translational NCS is most likely also responsible for the elevated intensity ratio.*

¹Intensities estimated from amplitudes.

²Theoretical values of $\langle |L| \rangle$, $\langle L^2 \rangle$ for acentric reflections are 0.5, 0.333 respectively for untwinned datasets, and 0.375, 0.2 for perfectly twinned datasets.

5 Model quality

5.1 Standard geometry

Bond lengths and bond angles in the following residue types are not validated in this section: PEG, CL, GOL, FJK, NAG, SO4, PGE, EDO, MES

The Z score for a bond length (or angle) is the number of standard deviations the observed value is removed from the expected value. A bond length (or angle) with $|Z| > 5$ is considered an outlier worth inspection. RMSZ is the root-mean-square of all Z scores of the bond lengths (or angles).

Mol	Chain	Bond lengths		Bond angles	
		RMSZ	# Z >5	RMSZ	# Z >5
1	A	0.39	0/4467	0.54	0/6061
1	B	0.41	0/4445	0.55	0/6033
All	All	0.40	0/8912	0.55	0/12094

There are no bond length outliers.

There are no bond angle outliers.

There are no chirality outliers.

There are no planarity outliers.

5.2 Too-close contacts

In the following table, the Non-H and H(model) columns list the number of non-hydrogen atoms and hydrogen atoms in the chain respectively. The H(added) column lists the number of hydrogen atoms added and optimized by MolProbity. The Clashes column lists the number of clashes within the asymmetric unit, whereas Symm-Clashes lists symmetry-related clashes.

Mol	Chain	Non-H	H(model)	H(added)	Clashes	Symm-Clashes
1	A	4311	0	4192	41	0
1	B	4295	0	4165	32	0
2	A	48	0	49	15	0
3	A	12	0	15	2	0
3	B	6	0	8	2	0
4	A	10	0	12	0	0
4	B	10	0	14	0	0
5	A	24	0	36	3	0
5	B	28	0	42	7	0
6	A	10	0	0	0	0
6	B	5	0	0	0	0

Continued on next page...

Continued from previous page...

Mol	Chain	Non-H	H(model)	H(added)	Clashes	Symm-Clashes
7	A	28	0	38	2	0
7	B	28	0	36	11	0
8	A	28	0	26	0	0
8	B	42	0	39	0	0
9	A	5	0	0	0	0
9	B	1	0	0	0	0
10	A	49	0	0	1	0
10	B	49	0	0	0	0
11	A	362	0	0	3	0
11	B	384	0	0	7	0
All	All	9735	0	8672	77	0

The all-atom clashscore is defined as the number of clashes found per 1000 atoms (including hydrogen atoms). The all-atom clashscore for this structure is 4.

The worst 5 of 77 close contacts within the same asymmetric unit are listed below, sorted by their clash magnitude.

Atom-1	Atom-2	Interatomic distance (Å)	Clash overlap (Å)
1:A:398:HIS:HD1	5:A:610:EDO:H22	1.38	0.86
10:A:626:FJK:NBF	10:A:626:FJK:NAZ	2.17	0.85
1:A:242[A]:ARG:HH11	2:A:614:MES:H81	1.43	0.83
7:B:614:PEG:H12	11:B:735:HOH:O	1.79	0.83
1:B:242:ARG:HH11	7:B:611:PEG:H31	1.47	0.78

There are no symmetry-related clashes.

5.3 Torsion angles [i](#)

5.3.1 Protein backbone [i](#)

In the following table, the Percentiles column shows the percent Ramachandran outliers of the chain as a percentile score with respect to all X-ray entries followed by that with respect to entries of similar resolution.

The Analysed column shows the number of residues for which the backbone conformation was analysed, and the total number of residues.

Mol	Chain	Analysed	Favoured	Allowed	Outliers	Percentiles	
1	A	541/565 (96%)	521 (96%)	20 (4%)	0	100	100
1	B	539/565 (95%)	519 (96%)	20 (4%)	0	100	100

Continued on next page...

Continued from previous page...

Mol	Chain	Analysed	Favoured	Allowed	Outliers	Percentiles	
All	All	1080/1130 (96%)	1040 (96%)	40 (4%)	0	100	100

There are no Ramachandran outliers to report.

5.3.2 Protein sidechains [i](#)

In the following table, the Percentiles column shows the percent sidechain outliers of the chain as a percentile score with respect to all X-ray entries followed by that with respect to entries of similar resolution.

The Analysed column shows the number of residues for which the sidechain conformation was analysed, and the total number of residues.

Mol	Chain	Analysed	Rotameric	Outliers	Percentiles	
1	A	475/494 (96%)	468 (98%)	7 (2%)	65	78
1	B	472/494 (96%)	466 (99%)	6 (1%)	69	81
All	All	947/988 (96%)	934 (99%)	13 (1%)	67	80

5 of 13 residues with a non-rotameric sidechain are listed below:

Mol	Chain	Res	Type
1	B	197	PHE
1	B	288	PHE
1	B	473	TRP
1	B	330	PHE
1	B	457	ASN

Sometimes sidechains can be flipped to improve hydrogen bonding and reduce clashes. There are no such sidechains identified.

5.3.3 RNA [i](#)

There are no RNA molecules in this entry.

5.4 Non-standard residues in protein, DNA, RNA chains [i](#)

There are no non-standard protein/DNA/RNA residues in this entry.

5.5 Carbohydrates [i](#)

There are no monosaccharides in this entry.

5.6 Ligand geometry [i](#)

Of 46 ligands modelled in this entry, 6 are monoatomic - leaving 40 for Mogul analysis.

In the following table, the Counts columns list the number of bonds (or angles) for which Mogul statistics could be retrieved, the number of bonds (or angles) that are observed in the model and the number of bonds (or angles) that are defined in the Chemical Component Dictionary. The Link column lists molecule types, if any, to which the group is linked. The Z score for a bond length (or angle) is the number of standard deviations the observed value is removed from the expected value. A bond length (or angle) with $|Z| > 2$ is considered an outlier worth inspection. RMSZ is the root-mean-square of all Z scores of the bond lengths (or angles).

Mol	Type	Chain	Res	Link	Bond lengths			Bond angles		
					Counts	RMSZ	# Z > 2	Counts	RMSZ	# Z > 2
5	EDO	A	607	-	3,3,3	0.44	0	2,2,2	0.38	0
5	EDO	B	601	-	3,3,3	0.43	0	2,2,2	0.35	0
7	PEG	B	613	-	6,6,6	0.58	0	5,5,5	0.35	0
7	PEG	B	612	-	6,6,6	0.59	0	5,5,5	0.35	0
8	NAG	B	617	-	14,14,15	0.70	1 (7%)	17,19,21	0.66	1 (5%)
7	PEG	A	615	-	6,6,6	0.66	0	5,5,5	0.86	0
4	PGE	B	605	-	9,9,9	0.38	0	8,8,8	0.29	0
2	MES	A	601	-	12,12,12	2.23	1 (8%)	14,16,16	1.82	4 (28%)
5	EDO	B	607	-	3,3,3	0.47	0	2,2,2	0.14	0
7	PEG	B	614	-	6,6,6	0.63	0	5,5,5	0.42	0
10	FJK	B	619	-	52,56,56	5.83	21 (40%)	58,79,79	2.60	24 (41%)
2	MES	A	614	-	12,12,12	2.25	1 (8%)	14,16,16	2.18	5 (35%)
8	NAG	A	620	1	14,14,15	0.41	0	17,19,21	0.58	0
6	SO4	A	627	-	4,4,4	0.17	0	6,6,6	0.24	0
10	FJK	A	626	-	52,56,56	5.85	23 (44%)	58,79,79	2.93	24 (41%)
5	EDO	A	605	-	3,3,3	0.43	0	2,2,2	0.68	0
3	GOL	B	604	-	5,5,5	0.26	0	5,5,5	0.79	0
5	EDO	B	602	-	3,3,3	0.62	0	2,2,2	0.05	0
5	EDO	B	603	-	3,3,3	0.43	0	2,2,2	0.51	0
5	EDO	A	610	-	3,3,3	0.50	0	2,2,2	0.36	0
6	SO4	A	613	-	4,4,4	0.17	0	6,6,6	0.09	0
8	NAG	B	616	1	14,14,15	0.40	0	17,19,21	0.57	0
8	NAG	A	619	1	14,14,15	0.44	0	17,19,21	0.75	1 (5%)
7	PEG	A	616	-	6,6,6	0.56	0	5,5,5	0.20	0
6	SO4	B	608	-	4,4,4	0.19	0	6,6,6	0.11	0
5	EDO	A	604	-	3,3,3	0.56	0	2,2,2	0.21	0

Mol	Type	Chain	Res	Link	Bond lengths			Bond angles		
					Counts	RMSZ	# Z > 2	Counts	RMSZ	# Z > 2
2	MES	A	612	-	12,12,12	2.34	1 (8%)	14,16,16	1.85	3 (21%)
2	MES	A	611	-	12,12,12	1.93	1 (8%)	14,16,16	2.01	3 (21%)
5	EDO	A	608	-	3,3,3	0.43	0	2,2,2	0.60	0
8	NAG	B	615	1	14,14,15	0.77	1 (7%)	17,19,21	0.69	1 (5%)
4	PGE	A	603	-	9,9,9	0.38	0	8,8,8	0.38	0
5	EDO	B	609	-	3,3,3	0.34	0	2,2,2	0.69	0
3	GOL	A	609	-	5,5,5	0.45	0	5,5,5	0.81	0
5	EDO	A	606	-	3,3,3	0.51	0	2,2,2	0.11	0
7	PEG	A	618	-	6,6,6	0.62	0	5,5,5	0.27	0
3	GOL	A	602	-	5,5,5	0.28	0	5,5,5	0.64	0
5	EDO	B	610	-	3,3,3	0.42	0	2,2,2	0.86	0
7	PEG	A	617	-	6,6,6	0.61	0	5,5,5	0.32	0
5	EDO	B	606	-	3,3,3	0.39	0	2,2,2	0.40	0
7	PEG	B	611	-	6,6,6	0.62	0	5,5,5	0.75	0

In the following table, the Chirals column lists the number of chiral outliers, the number of chiral centers analysed, the number of these observed in the model and the number defined in the Chemical Component Dictionary. Similar counts are reported in the Torsion and Rings columns. '-' means no outliers of that kind were identified.

Mol	Type	Chain	Res	Link	Chirals	Torsions	Rings
5	EDO	A	607	-	-	1/1/1/1	-
5	EDO	B	601	-	-	1/1/1/1	-
7	PEG	B	613	-	-	1/4/4/4	-
7	PEG	B	612	-	-	1/4/4/4	-
8	NAG	B	617	-	-	2/6/23/26	0/1/1/1
7	PEG	A	615	-	-	3/4/4/4	-
4	PGE	B	605	-	-	4/7/7/7	-
2	MES	A	601	-	-	5/6/14/14	0/1/1/1
10	FJK	B	619	-	2/2/7/10	5/17/66/66	0/8/8/8
5	EDO	B	607	-	-	0/1/1/1	-
7	PEG	B	614	-	-	3/4/4/4	-
2	MES	A	614	-	-	3/6/14/14	0/1/1/1
8	NAG	A	620	1	-	0/6/23/26	0/1/1/1
10	FJK	A	626	-	2/2/7/10	2/17/66/66	0/8/8/8
5	EDO	A	605	-	-	1/1/1/1	-
3	GOL	B	604	-	-	0/4/4/4	-
5	EDO	B	602	-	-	0/1/1/1	-
5	EDO	B	603	-	-	0/1/1/1	-
5	EDO	A	610	-	-	1/1/1/1	-

Continued on next page...

Continued from previous page...

Mol	Type	Chain	Res	Link	Chirals	Torsions	Rings
8	NAG	B	616	1	-	0/6/23/26	0/1/1/1
8	NAG	A	619	1	-	2/6/23/26	0/1/1/1
7	PEG	A	616	-	-	3/4/4/4	-
5	EDO	A	604	-	-	0/1/1/1	-
2	MES	A	612	-	-	4/6/14/14	0/1/1/1
2	MES	A	611	-	-	3/6/14/14	0/1/1/1
5	EDO	A	608	-	-	1/1/1/1	-
8	NAG	B	615	1	-	2/6/23/26	0/1/1/1
4	PGE	A	603	-	-	4/7/7/7	-
5	EDO	B	609	-	-	0/1/1/1	-
3	GOL	A	609	-	-	3/4/4/4	-
5	EDO	A	606	-	-	0/1/1/1	-
7	PEG	A	618	-	-	1/4/4/4	-
3	GOL	A	602	-	-	4/4/4/4	-
5	EDO	B	610	-	-	1/1/1/1	-
7	PEG	A	617	-	-	2/4/4/4	-
5	EDO	B	606	-	-	0/1/1/1	-
7	PEG	B	611	-	-	1/4/4/4	-

The worst 5 of 50 bond length outliers are listed below:

Mol	Chain	Res	Type	Atoms	Z	Observed(Å)	Ideal(Å)
10	A	626	FJK	CAO-CBT	-20.80	1.15	1.53
10	B	619	FJK	CAO-CBT	-20.68	1.15	1.53
10	B	619	FJK	CAM-CBR	-18.83	1.16	1.53
10	A	626	FJK	CAM-CBR	-17.97	1.18	1.53
10	B	619	FJK	CAF-CAO	-13.79	1.16	1.53

The worst 5 of 66 bond angle outliers are listed below:

Mol	Chain	Res	Type	Atoms	Z	Observed(°)	Ideal(°)
10	A	626	FJK	CBN-CBI-NBV	11.18	113.04	106.44
10	A	626	FJK	CBL-NBE-CBH	-9.90	116.51	130.41
10	B	619	FJK	CBN-CBI-NBV	7.86	111.08	106.44
10	B	619	FJK	CBL-NBE-CBH	-7.20	120.31	130.41
10	B	619	FJK	CBM-NBF-CBH	-5.49	113.20	125.39

All (4) chirality outliers are listed below:

Mol	Chain	Res	Type	Atom
10	A	626	FJK	CBR
10	A	626	FJK	CBT
10	B	619	FJK	CBR
10	B	619	FJK	CBT

5 of 64 torsion outliers are listed below:

Mol	Chain	Res	Type	Atoms
2	A	601	MES	C8-C7-N4-C5
2	A	611	MES	C7-C8-S-O1S
2	A	611	MES	C7-C8-S-O3S
2	A	612	MES	C8-C7-N4-C5
2	A	612	MES	C7-C8-S-O2S

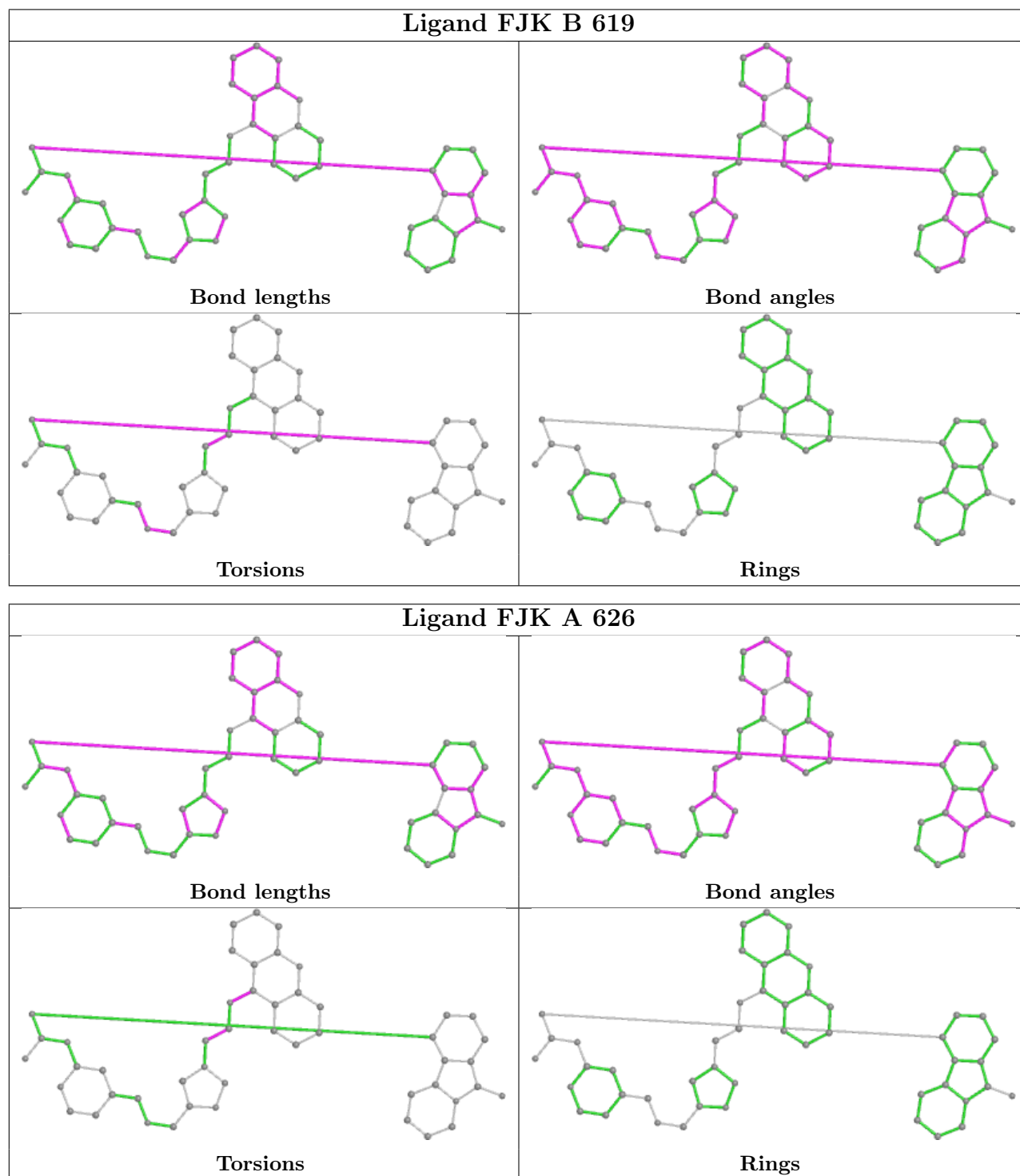
There are no ring outliers.

16 monomers are involved in 42 short contacts:

Mol	Chain	Res	Type	Clashes	Symm-Clashes
7	B	613	PEG	6	0
7	A	615	PEG	2	0
2	A	601	MES	3	0
5	B	607	EDO	2	0
7	B	614	PEG	2	0
2	A	614	MES	5	0
10	A	626	FJK	1	0
3	B	604	GOL	2	0
5	B	603	EDO	1	0
5	A	610	EDO	3	0
2	A	611	MES	7	0
5	B	609	EDO	3	0
3	A	609	GOL	1	0
3	A	602	GOL	1	0
5	B	606	EDO	1	0
7	B	611	PEG	3	0

The following is a two-dimensional graphical depiction of Mogul quality analysis of bond lengths, bond angles, torsion angles, and ring geometry for all instances of the Ligand of Interest. In addition, ligands with molecular weight > 250 and outliers as shown on the validation Tables will also be included. For torsion angles, if less than 5% of the Mogul distribution of torsion angles is within 10 degrees of the torsion angle in question, then that torsion angle is considered an outlier. Any bond that is central to one or more torsion angles identified as an outlier by Mogul will be highlighted in the graph. For rings, the root-mean-square deviation (RMSD) between the ring in question and similar rings identified by Mogul is calculated over all ring torsion angles. If the

average RMSD is greater than 60 degrees and the minimal RMSD between the ring in question and any Mogul-identified rings is also greater than 60 degrees, then that ring is considered an outlier. The outliers are highlighted in purple. The color gray indicates Mogul did not find sufficient equivalents in the CSD to analyse the geometry.



5.7 Other polymers [i](#)

There are no such residues in this entry.

5.8 Polymer linkage issues [i](#)

There are no chain breaks in this entry.

6 Fit of model and data [i](#)

6.1 Protein, DNA and RNA chains [i](#)

In the following table, the column labelled ‘#RSRZ > 2’ contains the number (and percentage) of RSRZ outliers, followed by percent RSRZ outliers for the chain as percentile scores relative to all X-ray entries and entries of similar resolution. The OWAB column contains the minimum, median, 95th percentile and maximum values of the occupancy-weighted average B-factor per residue. The column labelled ‘Q < 0.9’ lists the number of (and percentage) of residues with an average occupancy less than 0.9.

Mol	Chain	Analysed	<RSRZ>	#RSRZ>2	OWAB(Å ²)	Q<0.9
1	A	532/565 (94%)	-0.59	8 (1%) 73 72	18, 28, 46, 80	2 (0%)
1	B	532/565 (94%)	-0.61	6 (1%) 80 79	17, 27, 45, 88	3 (0%)
All	All	1064/1130 (94%)	-0.60	14 (1%) 77 75	17, 28, 46, 88	5 (0%)

The worst 5 of 14 RSRZ outliers are listed below:

Mol	Chain	Res	Type	RSRZ
1	A	535	THR	5.3
1	B	486	HIS	4.8
1	B	485	PRO	4.4
1	A	488	GLN	4.1
1	A	486	HIS	3.6

6.2 Non-standard residues in protein, DNA, RNA chains [i](#)

There are no non-standard protein/DNA/RNA residues in this entry.

6.3 Carbohydrates [i](#)

There are no monosaccharides in this entry.

6.4 Ligands [i](#)

In the following table, the Atoms column lists the number of modelled atoms in the group and the number defined in the chemical component dictionary. The B-factors column lists the minimum, median, 95th percentile and maximum values of B factors of atoms in the group. The column labelled ‘Q < 0.9’ lists the number of atoms with occupancy less than 0.9.

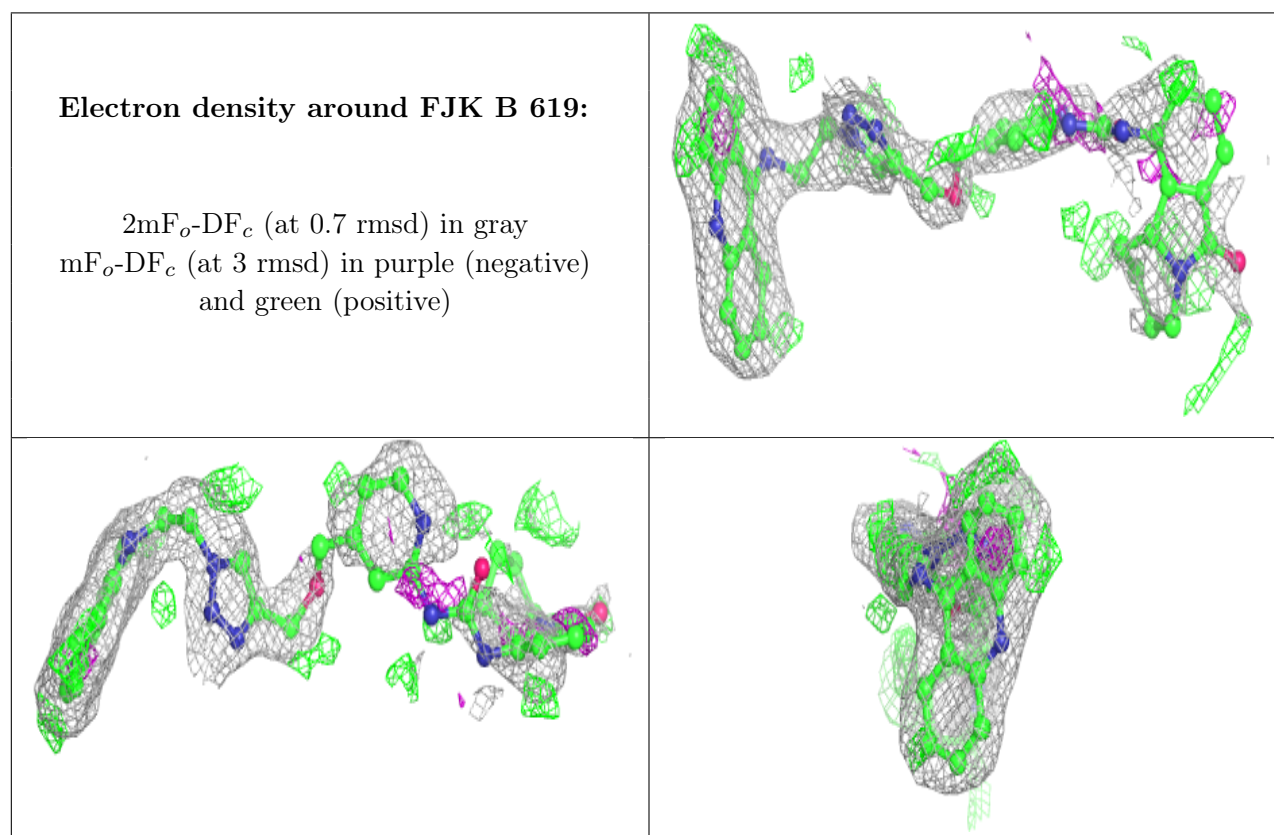
Mol	Type	Chain	Res	Atoms	RSCC	RSR	B-factors(\AA^2)	Q<0.9
5	EDO	B	602	4/4	0.55	0.23	48,50,52,54	0
7	PEG	B	614	7/7	0.61	0.19	46,52,58,59	0
10	FJK	B	619	49/49	0.63	0.32	21,44,58,62	49
8	NAG	B	617	14/15	0.65	0.30	55,68,72,73	0
4	PGE	A	603	10/10	0.67	0.26	52,58,63,67	0
10	FJK	A	626	49/49	0.73	0.32	18,42,58,60	49
5	EDO	A	604	4/4	0.75	0.19	48,49,51,53	0
2	MES	A	614	12/12	0.78	0.38	45,54,64,64	12
7	PEG	A	617	7/7	0.78	0.29	45,56,59,60	0
3	GOL	A	609	6/6	0.80	0.24	49,51,53,58	0
7	PEG	A	616	7/7	0.82	0.23	39,49,54,56	0
7	PEG	A	618	7/7	0.83	0.22	38,45,49,50	0
7	PEG	B	612	7/7	0.83	0.16	39,46,51,55	0
7	PEG	A	615	7/7	0.83	0.19	34,38,48,49	0
8	NAG	A	619	14/15	0.84	0.26	48,54,60,70	0
7	PEG	B	613	7/7	0.84	0.43	48,51,60,68	0
5	EDO	B	607	4/4	0.86	0.18	36,42,43,50	0
2	MES	A	612	12/12	0.86	0.31	38,56,65,65	12
2	MES	A	611	12/12	0.86	0.23	38,42,48,49	12
3	GOL	B	604	6/6	0.87	0.26	39,43,45,54	0
5	EDO	B	609	4/4	0.87	0.18	35,39,46,55	0
8	NAG	B	615	14/15	0.87	0.27	50,57,67,68	0
9	CL	A	624	1/1	0.88	0.07	63,63,63,63	0
5	EDO	A	606	4/4	0.88	0.18	42,47,47,52	0
5	EDO	B	603	4/4	0.88	0.13	41,46,47,51	0
4	PGE	B	605	10/10	0.89	0.16	36,41,52,53	0
3	GOL	A	602	6/6	0.89	0.23	30,41,44,62	0
5	EDO	B	606	4/4	0.90	0.16	38,43,51,52	0
5	EDO	A	610	4/4	0.90	0.17	35,38,39,41	0
9	CL	A	623	1/1	0.91	0.09	69,69,69,69	0
7	PEG	B	611	7/7	0.91	0.15	32,36,45,46	0
5	EDO	A	605	4/4	0.92	0.14	29,42,43,44	0
8	NAG	A	620	14/15	0.92	0.22	30,41,55,59	0
2	MES	A	601	12/12	0.93	0.31	54,59,67,70	0
5	EDO	A	608	4/4	0.93	0.29	47,50,51,61	0
8	NAG	B	616	14/15	0.93	0.20	37,46,54,61	0
5	EDO	B	610	4/4	0.93	0.10	41,42,44,57	0
5	EDO	B	601	4/4	0.94	0.10	31,36,41,46	0
6	SO4	A	627	5/5	0.95	0.19	35,39,46,53	5
5	EDO	A	607	4/4	0.95	0.09	36,38,45,48	0
9	CL	A	621	1/1	0.95	0.07	57,57,57,57	0
9	CL	A	622	1/1	0.95	0.06	63,63,63,63	0
6	SO4	B	608	5/5	0.96	0.19	51,59,66,71	0

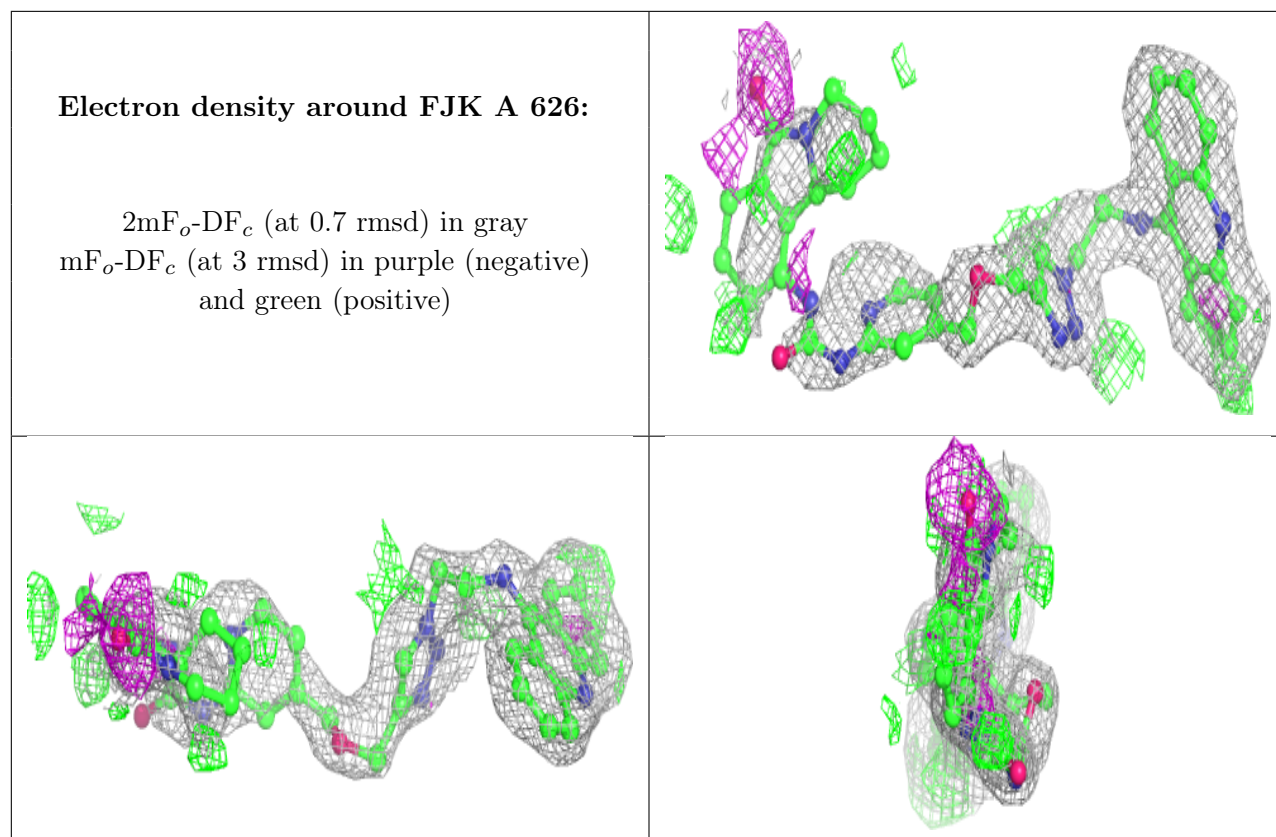
Continued on next page...

Continued from previous page...

Mol	Type	Chain	Res	Atoms	RSCC	RSR	B-factors(\AA^2)	Q<0.9
9	CL	A	625	1/1	0.96	0.05	55,55,55,55	0
9	CL	B	618	1/1	0.97	0.06	50,50,50,50	0
6	SO4	A	613	5/5	0.99	0.20	50,50,61,62	0

The following is a graphical depiction of the model fit to experimental electron density of all instances of the Ligand of Interest. In addition, ligands with molecular weight > 250 and outliers as shown on the geometry validation Tables will also be included. Each fit is shown from different orientation to approximate a three-dimensional view.





6.5 Other polymers [i](#)

There are no such residues in this entry.