



# Full wwPDB X-ray Structure Validation Report ⓘ

May 16, 2020 – 12:41 pm BST

PDB ID : 3H1R  
Title : Order-disorder structure of fluorescent protein FP480  
Authors : Pletnev, S.; Morozova, K.S.; Verkhusha, V.V.; Dauter, Z.  
Deposited on : 2009-04-13  
Resolution : 2.41 Å(reported)

This is a Full wwPDB X-ray Structure Validation Report for a publicly released PDB entry.

We welcome your comments at [validation@mail.wwpdb.org](mailto:validation@mail.wwpdb.org)

A user guide is available at

<https://www.wwpdb.org/validation/2017/XrayValidationReportHelp>

with specific help available everywhere you see the ⓘ symbol.

---

The following versions of software and data (see [references ⓘ](#)) were used in the production of this report:

MolProbity : 4.02b-467  
Mogul : 1.8.5 (274361), CSD as541be (2020)  
Xtriage (Phenix) : 1.13  
EDS : 2.11  
Percentile statistics : 20191225.v01 (using entries in the PDB archive December 25th 2019)  
Refmac : 5.8.0158  
CCP4 : 7.0.044 (Gargrove)  
Ideal geometry (proteins) : Engh & Huber (2001)  
Ideal geometry (DNA, RNA) : Parkinson et al. (1996)  
Validation Pipeline (wwPDB-VP) : 2.11

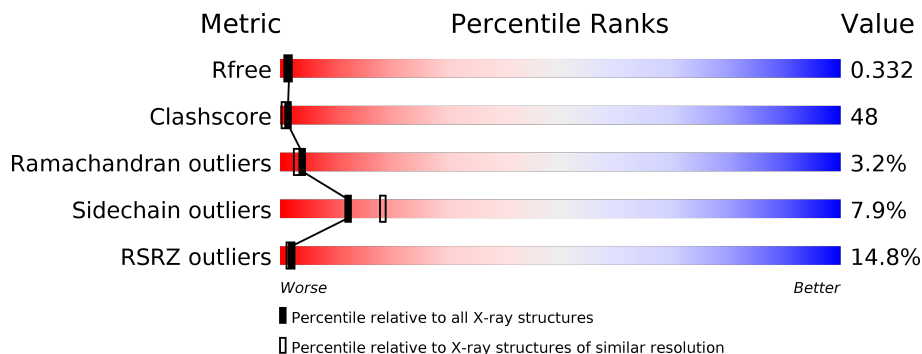
# 1 Overall quality at a glance

The following experimental techniques were used to determine the structure:

*X-RAY DIFFRACTION*

The reported resolution of this entry is 2.41 Å.

Percentile scores (ranging between 0-100) for global validation metrics of the entry are shown in the following graphic. The table shows the number of entries on which the scores are based.



Metric	Whole archive (#Entries)	Similar resolution (#Entries, resolution range(Å))
$R_{free}$	130704	4647 (2.44-2.40)
Clashscore	141614	5161 (2.44-2.40)
Ramachandran outliers	138981	5073 (2.44-2.40)
Sidechain outliers	138945	5074 (2.44-2.40)
RSRZ outliers	127900	4543 (2.44-2.40)

The table below summarises the geometric issues observed across the polymeric chains and their fit to the electron density. The red, orange, yellow and green segments on the lower bar indicate the fraction of residues that contain outliers for  $\geq 3$ , 2, 1 and 0 types of geometric quality criteria respectively. A grey segment represents the fraction of residues that are not modelled. The numeric value for each fraction is indicated below the corresponding segment, with a dot representing fractions  $\leq 5\%$ . The upper red bar (where present) indicates the fraction of residues that have poor fit to the electron density. The numeric value is given above the bar.

Mol	Chain	Length	Quality of chain
1	A	231	

The following table lists non-polymeric compounds, carbohydrate monomers and non-standard residues in protein, DNA, RNA chains that are outliers for geometric or electron-density-fit criteria:

Mol	Type	Chain	Res	Chirality	Geometry	Clashes	Electron density
1	NRQ	A	63	-	-	X	-

## 2 Entry composition

There is only 1 type of molecule in this entry. The entry contains 1797 atoms, of which 0 are hydrogens and 0 are deuteriums.

In the tables below, the ZeroOcc column contains the number of atoms modelled with zero occupancy, the AltConf column contains the number of residues with at least one atom in alternate conformation and the Trace column contains the number of residues modelled with at most 2 atoms.

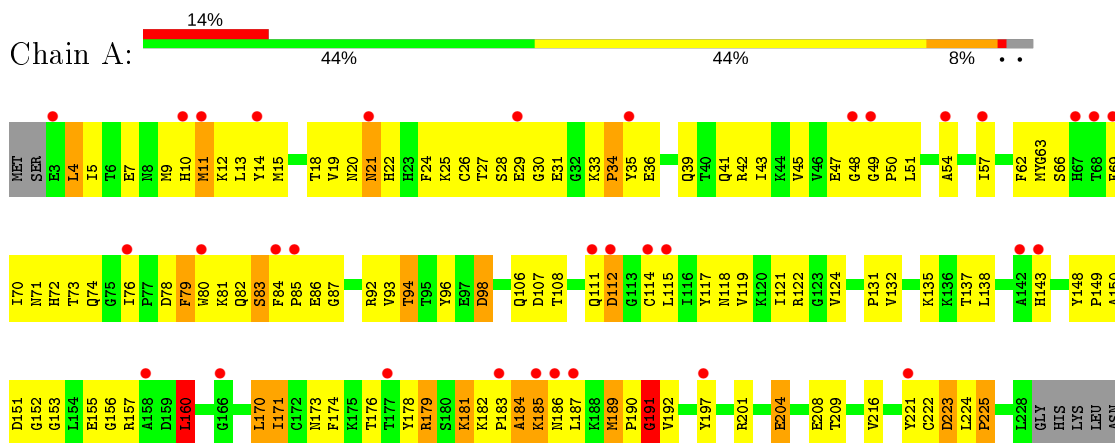
- Molecule 1 is a protein called Fluorescent protein FP480.

Mol	Chain	Residues	Atoms					ZeroOcc	AltConf	Trace
			Total	C	N	O	S			
1	A	224	1797	1146	303	337	11	0	0	0

### 3 Residue-property plots [i](#)

These plots are drawn for all protein, RNA and DNA chains in the entry. The first graphic for a chain summarises the proportions of the various outlier classes displayed in the second graphic. The second graphic shows the sequence view annotated by issues in geometry and electron density. Residues are color-coded according to the number of geometric quality criteria for which they contain at least one outlier: green = 0, yellow = 1, orange = 2 and red = 3 or more. A red dot above a residue indicates a poor fit to the electron density ( $RSRZ > 2$ ). Stretches of 2 or more consecutive residues without any outlier are shown as a green connector. Residues present in the sample, but not in the model, are shown in grey.

- Molecule 1: Fluorescent protein FP480



## 4 Data and refinement statistics

Property	Value	Source
Space group	I 4 2 2	Depositor
Cell constants a, b, c, $\alpha$ , $\beta$ , $\gamma$	91.39Å 91.39Å 53.52Å 90.00° 90.00° 90.00°	Depositor
Resolution (Å)	28.90 – 2.41 26.48 – 2.41	Depositor EDS
% Data completeness (in resolution range)	100.0 (28.90-2.41) 99.7 (26.48-2.41)	Depositor EDS
$R_{merge}$	(Not available)	Depositor
$R_{sym}$	(Not available)	Depositor
$\langle I/\sigma(I) \rangle$ <sup>1</sup>	3.01 (at 2.42Å)	Xtrriage
Refinement program	REFMAC	Depositor
R, $R_{free}$	0.228 , 0.321 0.221 , 0.332	Depositor DCC
$R_{free}$ test set	441 reflections (9.58%)	wwPDB-VP
Wilson B-factor (Å <sup>2</sup> )	49.0	Xtrriage
Anisotropy	0.074	Xtrriage
Bulk solvent $k_{sol}$ (e/Å <sup>3</sup> ), $B_{sol}$ (Å <sup>2</sup> )	0.22 , 69.6	EDS
L-test for twinning <sup>2</sup>	$\langle  L  \rangle = 0.49$ , $\langle L^2 \rangle = 0.32$	Xtrriage
Estimated twinning fraction	No twinning to report.	Xtrriage
$F_o, F_c$ correlation	0.92	EDS
Total number of atoms	1797	wwPDB-VP
Average B, all atoms (Å <sup>2</sup> )	35.0	wwPDB-VP

Xtrriage's analysis on translational NCS is as follows: *The largest off-origin peak in the Patterson function is 7.00% of the height of the origin peak. No significant pseudotranslation is detected.*

<sup>1</sup>Intensities estimated from amplitudes.

<sup>2</sup>Theoretical values of  $\langle |L| \rangle$ ,  $\langle L^2 \rangle$  for acentric reflections are 0.5, 0.333 respectively for untwinned datasets, and 0.375, 0.2 for perfectly twinned datasets.

## 5 Model quality [i](#)

### 5.1 Standard geometry [i](#)

Bond lengths and bond angles in the following residue types are not validated in this section: NRQ

The Z score for a bond length (or angle) is the number of standard deviations the observed value is removed from the expected value. A bond length (or angle) with  $|Z| > 5$  is considered an outlier worth inspection. RMSZ is the root-mean-square of all Z scores of the bond lengths (or angles).

Mol	Chain	Bond lengths		Bond angles	
		RMSZ	# Z  >5	RMSZ	# Z  >5
1	A	0.88	0/1818	1.01	6/2458 (0.2%)

Chiral center outliers are detected by calculating the chiral volume of a chiral center and verifying if the center is modelled as a planar moiety or with the opposite hand. A planarity outlier is detected by checking planarity of atoms in a peptide group, atoms in a mainchain group or atoms of a sidechain that are expected to be planar.

Mol	Chain	#Chirality outliers	#Planarity outliers
1	A	0	1

There are no bond length outliers.

All (6) bond angle outliers are listed below:

Mol	Chain	Res	Type	Atoms	Z	Observed( $^{\circ}$ )	Ideal( $^{\circ}$ )
1	A	98	ASP	CB-CG-OD1	-7.39	111.64	118.30
1	A	170	LEU	CB-CG-CD2	-6.75	99.52	111.00
1	A	160	LEU	CA-CB-CG	6.05	129.22	115.30
1	A	179	ARG	NE-CZ-NH2	-6.01	117.29	120.30
1	A	189	MET	C-N-CD	-5.84	107.75	120.60
1	A	98	ASP	CB-CG-OD2	5.16	122.95	118.30

There are no chirality outliers.

All (1) planarity outliers are listed below:

Mol	Chain	Res	Type	Group
1	A	191	GLY	Peptide

## 5.2 Too-close contacts

In the following table, the Non-H and H(model) columns list the number of non-hydrogen atoms and hydrogen atoms in the chain respectively. The H(added) column lists the number of hydrogen atoms added and optimized by MolProbity. The Clashes column lists the number of clashes within the asymmetric unit, whereas Symm-Clashes lists symmetry related clashes.

Mol	Chain	Non-H	H(model)	H(added)	Clashes	Symm-Clashes
1	A	1797	0	1743	169	0
All	All	1797	0	1743	169	0

The all-atom clashscore is defined as the number of clashes found per 1000 atoms (including hydrogen atoms). The all-atom clashscore for this structure is 48.

All (169) close contacts within the same asymmetric unit are listed below, sorted by their clash magnitude.

Atom-1	Atom-2	Interatomic distance (Å)	Clash overlap (Å)
1:A:122:ARG:NH1	1:A:124:VAL:CG1	2.00	1.25
1:A:14:TYR:OH	1:A:25:LYS:HD3	1.40	1.19
1:A:22:HIS:HE1	1:A:48:GLY:O	1.35	1.09
1:A:122:ARG:NH1	1:A:124:VAL:HG11	1.67	1.06
1:A:122:ARG:NH1	1:A:124:VAL:HG13	1.65	1.06
1:A:14:TYR:OH	1:A:25:LYS:CD	2.04	1.05
1:A:223:ASP:N	1:A:223:ASP:OD2	1.99	0.96
1:A:33:LYS:CD	1:A:36:GLU:OE1	2.13	0.95
1:A:33:LYS:HD2	1:A:36:GLU:OE1	1.66	0.94
1:A:122:ARG:HH12	1:A:124:VAL:HG11	1.28	0.94
1:A:11:MET:CE	1:A:31:GLU:N	2.32	0.93
1:A:11:MET:HE3	1:A:31:GLU:N	1.85	0.91
1:A:149:PRO:HB3	1:A:189:MET:HE3	1.51	0.90
1:A:224:LEU:HD23	1:A:224:LEU:N	1.86	0.89
1:A:106:GLN:OE1	1:A:107:ASP:N	2.08	0.87
1:A:22:HIS:CE1	1:A:48:GLY:O	2.26	0.86
1:A:11:MET:HE3	1:A:30:GLY:C	1.96	0.86
1:A:148:TYR:HB3	1:A:192:VAL:HG22	1.57	0.84
1:A:14:TYR:HH	1:A:25:LYS:HD3	1.43	0.84
1:A:39:GLN:HE22	1:A:66:SER:HB3	1.43	0.83
1:A:122:ARG:CZ	1:A:124:VAL:CG1	2.57	0.81
1:A:82:GLN:CB	1:A:187:LEU:HD23	2.08	0.81
1:A:222:CYS:SG	1:A:224:LEU:HG	2.23	0.79
1:A:108:THR:HG23	1:A:117:TYR:HE1	1.47	0.79
1:A:78:ASP:O	1:A:80:TRP:N	2.16	0.79
1:A:122:ARG:HH12	1:A:124:VAL:CG1	1.84	0.79

*Continued on next page...*

*Continued from previous page...*

Atom-1	Atom-2	Interatomic distance (Å)	Clash overlap (Å)
1:A:33:LYS:HD3	1:A:36:GLU:OE1	1.83	0.78
1:A:108:THR:HG23	1:A:117:TYR:CE1	2.17	0.78
1:A:122:ARG:CZ	1:A:124:VAL:HG11	2.14	0.77
1:A:73:THR:O	1:A:76:ILE:HG13	1.86	0.76
1:A:82:GLN:HB3	1:A:187:LEU:HD23	1.67	0.75
1:A:184:ALA:O	1:A:186:ASN:N	2.19	0.74
1:A:171:ILE:CD1	1:A:171:ILE:N	2.49	0.74
1:A:70:ILE:HG22	1:A:72:HIS:ND1	2.03	0.74
1:A:63:NRQ:CD1	1:A:143:HIS:CE1	2.70	0.74
1:A:171:ILE:N	1:A:171:ILE:HD13	2.03	0.73
1:A:18:THR:HG23	1:A:21:ASN:HA	1.71	0.73
1:A:71:ASN:OD1	1:A:71:ASN:C	2.27	0.73
1:A:11:MET:HE3	1:A:31:GLU:CA	2.18	0.73
1:A:148:TYR:O	1:A:148:TYR:CD2	2.43	0.72
1:A:78:ASP:OD2	1:A:81:LYS:HD2	1.90	0.72
1:A:94:THR:HG23	1:A:174:PHE:CD1	2.25	0.72
1:A:20:ASN:C	1:A:21:ASN:HD22	1.93	0.71
1:A:82:GLN:HB2	1:A:187:LEU:HD23	1.72	0.71
1:A:20:ASN:C	1:A:21:ASN:ND2	2.45	0.70
1:A:143:HIS:CE1	1:A:197:TYR:HB2	2.27	0.69
1:A:92:ARG:HG2	1:A:93:VAL:N	2.08	0.68
1:A:108:THR:CG2	1:A:117:TYR:HE1	2.07	0.67
1:A:149:PRO:HB3	1:A:189:MET:CE	2.25	0.67
1:A:74:GLN:NE2	1:A:221:TYR:HD1	1.94	0.65
1:A:150:ALA:HB3	1:A:155:GLU:HG3	1.79	0.64
1:A:106:GLN:HG2	1:A:119:VAL:HG22	1.78	0.64
1:A:11:MET:CE	1:A:31:GLU:CA	2.75	0.63
1:A:70:ILE:HG21	1:A:72:HIS:CE1	2.33	0.63
1:A:70:ILE:CG2	1:A:72:HIS:CE1	2.81	0.63
1:A:74:GLN:HE22	1:A:221:TYR:HD1	1.45	0.63
1:A:11:MET:HE3	1:A:31:GLU:HA	1.81	0.62
1:A:18:THR:CG2	1:A:21:ASN:HA	2.29	0.62
1:A:86:GLU:HB3	1:A:181:LYS:O	1.99	0.62
1:A:149:PRO:HD3	1:A:191:GLY:O	2.00	0.61
1:A:78:ASP:O	1:A:79:PHE:C	2.39	0.61
1:A:182:LYS:CD	1:A:187:LEU:HD11	2.31	0.60
1:A:122:ARG:HH11	1:A:124:VAL:HG13	1.65	0.60
1:A:63:NRQ:CD1	1:A:143:HIS:HE1	2.13	0.60
1:A:14:TYR:OH	1:A:25:LYS:HD2	2.00	0.59
1:A:11:MET:CE	1:A:30:GLY:C	2.65	0.59
1:A:160:LEU:HD13	1:A:174:PHE:CE1	2.37	0.59

*Continued on next page...*



*Continued from previous page...*

Atom-1	Atom-2	Interatomic distance (Å)	Clash overlap (Å)
1:A:11:MET:HE1	1:A:31:GLU:N	2.16	0.58
1:A:94:THR:HA	1:A:173:ASN:O	2.03	0.58
1:A:26:CYS:SG	1:A:45:VAL:HG13	2.44	0.57
1:A:106:GLN:OE1	1:A:107:ASP:CA	2.52	0.57
1:A:24:PHE:HA	1:A:47:GLU:O	2.05	0.57
1:A:63:NRQ:HD1	1:A:143:HIS:CE1	2.40	0.57
1:A:92:ARG:CG	1:A:93:VAL:N	2.67	0.56
1:A:86:GLU:N	1:A:86:GLU:OE1	2.37	0.56
1:A:63:NRQ:O2	1:A:63:NRQ:HD2	2.06	0.56
1:A:184:ALA:O	1:A:187:LEU:N	2.36	0.55
1:A:106:GLN:OE1	1:A:107:ASP:C	2.45	0.55
1:A:13:LEU:HD23	1:A:14:TYR:N	2.21	0.55
1:A:182:LYS:CG	1:A:187:LEU:HD11	2.37	0.55
1:A:10:HIS:C	1:A:11:MET:HG3	2.23	0.54
1:A:4:LEU:O	1:A:9:MET:CE	2.55	0.54
1:A:45:VAL:HG23	1:A:209:THR:HA	1.89	0.54
1:A:26:CYS:O	1:A:27:THR:HG22	2.08	0.54
1:A:74:GLN:NE2	1:A:221:TYR:CD1	2.75	0.53
1:A:54:ALA:HB2	1:A:135:LYS:HA	1.89	0.53
1:A:184:ALA:O	1:A:185:LYS:C	2.46	0.53
1:A:4:LEU:O	1:A:9:MET:HE3	2.08	0.53
1:A:131:PRO:O	1:A:132:VAL:C	2.43	0.52
1:A:63:NRQ:CE1	1:A:143:HIS:CE1	2.92	0.52
1:A:111:GLN:C	1:A:111:GLN:HE21	2.14	0.51
1:A:57:ILE:HD13	1:A:132:VAL:HG11	1.92	0.51
1:A:14:TYR:HD1	1:A:27:THR:HG22	1.75	0.51
1:A:122:ARG:C	1:A:122:ARG:HD3	2.32	0.51
1:A:137:THR:O	1:A:138:LEU:HD23	2.11	0.51
1:A:5:ILE:N	1:A:5:ILE:HD13	2.26	0.51
1:A:186:ASN:O	1:A:187:LEU:HG	2.12	0.49
1:A:26:CYS:O	1:A:27:THR:CG2	2.61	0.49
1:A:94:THR:CG2	1:A:174:PHE:CE1	2.96	0.48
1:A:19:VAL:O	1:A:20:ASN:C	2.50	0.48
1:A:70:ILE:HG22	1:A:72:HIS:CE1	2.47	0.48
1:A:152:GLY:HA3	1:A:179:ARG:NH2	2.28	0.48
1:A:107:ASP:OD2	1:A:181:LYS:HE2	2.13	0.48
1:A:24:PHE:CD2	1:A:24:PHE:N	2.81	0.48
1:A:94:THR:HG23	1:A:174:PHE:CE1	2.48	0.48
1:A:49:GLY:HA2	1:A:50:PRO:C	2.35	0.48
1:A:106:GLN:OE1	1:A:106:GLN:C	2.53	0.47
1:A:13:LEU:HD23	1:A:14:TYR:CA	2.44	0.47

*Continued on next page...*

*Continued from previous page...*

Atom-1	Atom-2	Interatomic distance (Å)	Clash overlap (Å)
1:A:150:ALA:O	1:A:151:ASP:HB3	2.14	0.47
1:A:148:TYR:CB	1:A:192:VAL:HG22	2.38	0.47
1:A:51:LEU:O	1:A:135:LYS:NZ	2.47	0.47
1:A:11:MET:HA	1:A:115:LEU:O	2.14	0.47
1:A:121:ILE:HG22	1:A:122:ARG:N	2.29	0.47
1:A:204:GLU:OE1	1:A:208:GLU:N	2.47	0.47
1:A:24:PHE:CA	1:A:47:GLU:O	2.62	0.47
1:A:78:ASP:C	1:A:80:TRP:N	2.68	0.47
1:A:28:SER:HB2	1:A:42:ARG:O	2.15	0.47
1:A:156:GLY:O	1:A:157:ARG:NH1	2.46	0.46
1:A:4:LEU:C	1:A:5:ILE:HD13	2.36	0.46
1:A:122:ARG:NH2	1:A:124:VAL:HG11	2.29	0.46
1:A:5:ILE:HA	1:A:9:MET:SD	2.56	0.46
1:A:15:MET:HA	1:A:119:VAL:O	2.16	0.45
1:A:184:ALA:C	1:A:186:ASN:N	2.69	0.45
1:A:182:LYS:HG2	1:A:187:LEU:HD11	1.97	0.45
1:A:108:THR:CG2	1:A:117:TYR:CE1	2.90	0.45
1:A:85:PRO:HD2	1:A:86:GLU:OE1	2.16	0.45
1:A:83:SER:HB3	1:A:87:GLY:O	2.17	0.45
1:A:33:LYS:O	1:A:35:TYR:N	2.49	0.45
1:A:70:ILE:HG21	1:A:72:HIS:HE1	1.79	0.44
1:A:98:ASP:C	1:A:98:ASP:OD1	2.54	0.44
1:A:111:GLN:HE21	1:A:112:ASP:HB2	1.83	0.44
1:A:150:ALA:O	1:A:151:ASP:CB	2.63	0.44
1:A:51:LEU:O	1:A:135:LYS:CE	2.66	0.44
1:A:63:NRQ:HE1	1:A:160:LEU:HD11	2.00	0.44
1:A:170:LEU:C	1:A:171:ILE:HD13	2.37	0.43
1:A:222:CYS:C	1:A:223:ASP:OD2	2.56	0.43
1:A:224:LEU:C	1:A:225:PRO:O	2.55	0.43
1:A:176:THR:HG21	1:A:178:TYR:CZ	2.53	0.43
1:A:189:MET:HA	1:A:190:PRO:HD3	1.41	0.43
1:A:170:LEU:C	1:A:171:ILE:CD1	2.86	0.43
1:A:43:ILE:HG23	1:A:62:PHE:CE2	2.53	0.43
1:A:108:THR:O	1:A:181:LYS:NZ	2.51	0.43
1:A:34:PRO:HA	1:A:69:PHE:HA	2.00	0.43
1:A:83:SER:HA	1:A:182:LYS:HD2	2.01	0.43
1:A:63:NRQ:HA31	1:A:63:NRQ:N1	2.34	0.43
1:A:111:GLN:HE21	1:A:112:ASP:N	2.16	0.42
1:A:153:GLY:O	1:A:189:MET:HE1	2.19	0.42
1:A:30:GLY:O	1:A:31:GLU:HB3	2.19	0.42
1:A:12:LYS:HE2	1:A:114:CYS:SG	2.59	0.42

*Continued on next page...*

Continued from previous page...

Atom-1	Atom-2	Interatomic distance (Å)	Clash overlap (Å)
1:A:48:GLY:O	1:A:51:LEU:HD23	2.20	0.42
1:A:148:TYR:O	1:A:149:PRO:C	2.58	0.41
1:A:148:TYR:CE2	1:A:155:GLU:HB2	2.55	0.41
1:A:182:LYS:HA	1:A:183:PRO:HD3	1.75	0.41
1:A:224:LEU:HD23	1:A:224:LEU:H	1.78	0.41
1:A:57:ILE:HG22	1:A:96:TYR:OH	2.19	0.41
1:A:121:ILE:CG2	1:A:122:ARG:N	2.84	0.41
1:A:41:GLN:HB2	1:A:63:NRQ:HE3	2.01	0.41
1:A:4:LEU:O	1:A:9:MET:HE1	2.19	0.41
1:A:74:GLN:O	1:A:76:ILE:N	2.54	0.41
1:A:149:PRO:CB	1:A:189:MET:CE	2.96	0.41
1:A:28:SER:HB3	1:A:43:ILE:HA	2.03	0.41
1:A:34:PRO:HD3	1:A:69:PHE:CE2	2.56	0.41
1:A:10:HIS:C	1:A:11:MET:CG	2.88	0.41
1:A:28:SER:CB	1:A:42:ARG:O	2.69	0.41
1:A:84:PHE:HB3	1:A:85:PRO:HA	2.03	0.40
1:A:63:NRQ:O2	1:A:63:NRQ:CD2	2.68	0.40
1:A:39:GLN:NE2	1:A:66:SER:HB3	2.24	0.40
1:A:108:THR:HG23	1:A:117:TYR:CD1	2.55	0.40
1:A:21:ASN:ND2	1:A:21:ASN:N	2.69	0.40

There are no symmetry-related clashes.

## 5.3 Torsion angles [i](#)

### 5.3.1 Protein backbone [i](#)

In the following table, the Percentiles column shows the percent Ramachandran outliers of the chain as a percentile score with respect to all X-ray entries followed by that with respect to entries of similar resolution.

The Analysed column shows the number of residues for which the backbone conformation was analysed, and the total number of residues.

Mol	Chain	Analysed	Favoured	Allowed	Outliers	Percentiles
1	A	219/231 (95%)	200 (91%)	12 (6%)	7 (3%)	<b>4</b> <b>3</b>

All (7) Ramachandran outliers are listed below:

Mol	Chain	Res	Type
1	A	79	PHE

Continued on next page...

*Continued from previous page...*

Mol	Chain	Res	Type
1	A	185	LYS
1	A	191	GLY
1	A	225	PRO
1	A	34	PRO
1	A	184	ALA
1	A	112	ASP

### 5.3.2 Protein sidechains [i](#)

In the following table, the Percentiles column shows the percent sidechain outliers of the chain as a percentile score with respect to all X-ray entries followed by that with respect to entries of similar resolution.

The Analysed column shows the number of residues for which the sidechain conformation was analysed, and the total number of residues.

Mol	Chain	Analysed	Rotameric	Outliers	Percentiles
1	A	191/197 (97%)	176 (92%)	15 (8%)	<b>12</b> <b>18</b>

All (15) residues with a non-rotameric sidechain are listed below:

Mol	Chain	Res	Type
1	A	4	LEU
1	A	7	GLU
1	A	11	MET
1	A	21	ASN
1	A	29	GLU
1	A	83	SER
1	A	94	THR
1	A	118	ASN
1	A	160	LEU
1	A	171	ILE
1	A	181	LYS
1	A	201	ARG
1	A	204	GLU
1	A	216	VAL
1	A	223	ASP

Some sidechains can be flipped to improve hydrogen bonding and reduce clashes. All (8) such sidechains are listed below:

Mol	Chain	Res	Type
1	A	8	ASN
1	A	21	ASN
1	A	22	HIS
1	A	39	GLN
1	A	74	GLN
1	A	111	GLN
1	A	118	ASN
1	A	143	HIS

### 5.3.3 RNA [i](#)

There are no RNA molecules in this entry.

## 5.4 Non-standard residues in protein, DNA, RNA chains [i](#)

1 non-standard protein/DNA/RNA residue is modelled in this entry.

In the following table, the Counts columns list the number of bonds (or angles) for which Mogul statistics could be retrieved, the number of bonds (or angles) that are observed in the model and the number of bonds (or angles) that are defined in the Chemical Component Dictionary. The Link column lists molecule types, if any, to which the group is linked. The Z score for a bond length (or angle) is the number of standard deviations the observed value is removed from the expected value. A bond length (or angle) with  $|Z| > 2$  is considered an outlier worth inspection. RMSZ is the root-mean-square of all Z scores of the bond lengths (or angles).

Mol	Type	Chain	Res	Link	Bond lengths			Bond angles		
					Counts	RMSZ	# Z  > 2	Counts	RMSZ	# Z  > 2
1	NRQ	A	63	1	23,24,25	1.24	1 (4%)	23,32,34	1.59	5 (21%)

In the following table, the Chirals column lists the number of chiral outliers, the number of chiral centers analysed, the number of these observed in the model and the number defined in the Chemical Component Dictionary. Similar counts are reported in the Torsion and Rings columns. '-' means no outliers of that kind were identified.

Mol	Type	Chain	Res	Link	Chirals	Torsions	Rings
1	NRQ	A	63	1	-	5/9/31/32	0/2/2/2

All (1) bond length outliers are listed below:

Mol	Chain	Res	Type	Atoms	Z	Observed(Å)	Ideal(Å)
1	A	63	NRQ	OH-CZ	-4.38	1.26	1.37

All (5) bond angle outliers are listed below:

Mol	Chain	Res	Type	Atoms	Z	Observed(°)	Ideal(°)
1	A	63	NRQ	CB2-CA2-C2	3.36	126.29	122.28
1	A	63	NRQ	CB2-CA2-N2	-3.04	124.61	128.83
1	A	63	NRQ	O3-C3-CA3	-2.94	117.52	126.39
1	A	63	NRQ	CD1-CG2-CD2	2.68	121.61	117.64
1	A	63	NRQ	CA2-C2-N3	-2.40	102.23	103.37

There are no chirality outliers.

All (5) torsion outliers are listed below:

Mol	Chain	Res	Type	Atoms
1	A	63	NRQ	CA1-CB1-CG1-SD
1	A	63	NRQ	C1-CA1-CB1-CG1
1	A	63	NRQ	C2-CA2-CB2-CG2
1	A	63	NRQ	CB1-CG1-SD-CE
1	A	63	NRQ	N2-CA2-CB2-CG2

There are no ring outliers.

1 monomer is involved in 9 short contacts:

Mol	Chain	Res	Type	Clashes	Symm-Clashes
1	A	63	NRQ	9	0

## 5.5 Carbohydrates [i](#)

There are no carbohydrates in this entry.

## 5.6 Ligand geometry [i](#)

There are no ligands in this entry.

## 5.7 Other polymers [i](#)

There are no such residues in this entry.

## 5.8 Polymer linkage issues [i](#)

There are no chain breaks in this entry.

## 6 Fit of model and data

### 6.1 Protein, DNA and RNA chains

In the following table, the column labelled ‘#RSRZ> 2’ contains the number (and percentage) of RSRZ outliers, followed by percent RSRZ outliers for the chain as percentile scores relative to all X-ray entries and entries of similar resolution. The OWAB column contains the minimum, median, 95<sup>th</sup> percentile and maximum values of the occupancy-weighted average B-factor per residue. The column labelled ‘Q< 0.9’ lists the number of (and percentage) of residues with an average occupancy less than 0.9.

Mol	Chain	Analysed	<RSRZ>	#RSRZ>2	OWAB(Å <sup>2</sup> )	Q<0.9
1	A	223/231 (96%)	0.81	33 (14%) <b>2</b>   <b>1</b>	19, 34, 52, 79	223 (100%)

All (33) RSRZ outliers are listed below:

Mol	Chain	Res	Type	RSRZ
1	A	186	ASN	9.9
1	A	185	LYS	6.1
1	A	158	ALA	5.5
1	A	68	THR	5.0
1	A	11	MET	4.9
1	A	114	CYS	4.6
1	A	76	ILE	4.1
1	A	142	ALA	3.9
1	A	84	PHE	3.9
1	A	69	PHE	3.7
1	A	49	GLY	3.7
1	A	14	TYR	3.7
1	A	183	PRO	3.7
1	A	111	GLN	3.2
1	A	143	HIS	3.0
1	A	187	LEU	3.0
1	A	112	ASP	2.8
1	A	48	GLY	2.8
1	A	197	TYR	2.8
1	A	115	LEU	2.8
1	A	80	TRP	2.7
1	A	21	ASN	2.6
1	A	67	HIS	2.6
1	A	177	THR	2.5
1	A	10	HIS	2.4
1	A	3	GLU	2.4
1	A	57	ILE	2.2

*Continued on next page...*

*Continued from previous page...*

Mol	Chain	Res	Type	RSRZ
1	A	221	TYR	2.2
1	A	85	PRO	2.2
1	A	35	TYR	2.2
1	A	29	GLU	2.2
1	A	54	ALA	2.1
1	A	166	GLY	2.0

## 6.2 Non-standard residues in protein, DNA, RNA chains [i](#)

In the following table, the Atoms column lists the number of modelled atoms in the group and the number defined in the chemical component dictionary. The B-factors column lists the minimum, median, 95<sup>th</sup> percentile and maximum values of B factors of atoms in the group. The column labelled 'Q< 0.9' lists the number of atoms with occupancy less than 0.9.

Mol	Type	Chain	Res	Atoms	RSCC	RSR	B-factors(Å <sup>2</sup> )	Q<0.9
1	NRQ	A	63	23/24	0.89	0.25	39,51,68,70	23

## 6.3 Carbohydrates [i](#)

There are no carbohydrates in this entry.

## 6.4 Ligands [i](#)

There are no ligands in this entry.

## 6.5 Other polymers [i](#)

There are no such residues in this entry.