



# Full wwPDB X-ray Structure Validation Report ⓘ

Aug 20, 2023 – 03:47 AM EDT

PDB ID : 2GZ5  
Title : Human Type 1 methionine aminopeptidase in complex with ovalicin at 1.1  
Ang  
Authors : Addlagatta, A.; Matthews, B.W.  
Deposited on : 2006-05-10  
Resolution : 1.10 Å(reported)

This is a Full wwPDB X-ray Structure Validation Report for a publicly released PDB entry.

We welcome your comments at [validation@mail.wwpdb.org](mailto:validation@mail.wwpdb.org)

A user guide is available at

<https://www.wwpdb.org/validation/2017/XrayValidationReportHelp>

with specific help available everywhere you see the ⓘ symbol.

The types of validation reports are described at

<http://www.wwpdb.org/validation/2017/FAQs#types>.

---

The following versions of software and data (see [references ⓘ](#)) were used in the production of this report:

MolProbity : 4.02b-467  
Mogul : 1.8.5 (274361), CSD as541be (2020)  
Xtriage (Phenix) : 1.13  
EDS : 2.35  
buster-report : 1.1.7 (2018)  
Percentile statistics : 20191225.v01 (using entries in the PDB archive December 25th 2019)  
Refmac : 5.8.0158  
CCP4 : 7.0.044 (Gargrove)  
Ideal geometry (proteins) : Engh & Huber (2001)  
Ideal geometry (DNA, RNA) : Parkinson et al. (1996)  
Validation Pipeline (wwPDB-VP) : 2.35

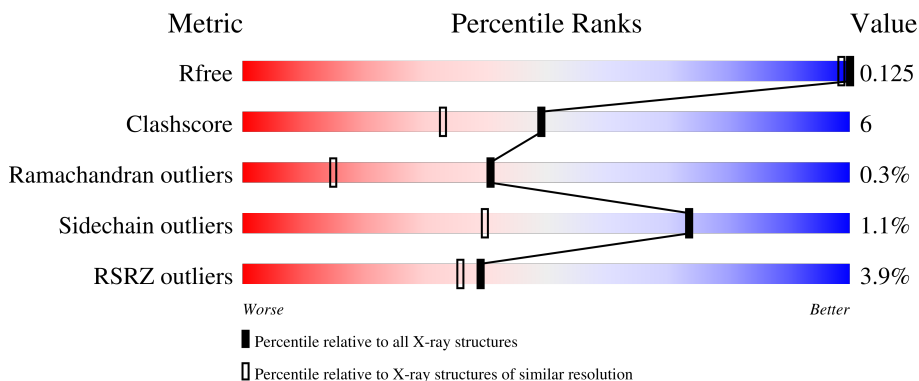
# 1 Overall quality at a glance i

The following experimental techniques were used to determine the structure:

*X-RAY DIFFRACTION*

The reported resolution of this entry is 1.10 Å.

Percentile scores (ranging between 0-100) for global validation metrics of the entry are shown in the following graphic. The table shows the number of entries on which the scores are based.



Metric	Whole archive (#Entries)	Similar resolution (#Entries, resolution range(Å))
$R_{free}$	130704	1619 (1.14-1.06)
Clashscore	141614	1671 (1.14-1.06)
Ramachandran outliers	138981	1615 (1.14-1.06)
Sidechain outliers	138945	1613 (1.14-1.06)
RSRZ outliers	127900	1588 (1.14-1.06)

The table below summarises the geometric issues observed across the polymeric chains and their fit to the electron density. The red, orange, yellow and green segments of the lower bar indicate the fraction of residues that contain outliers for  $\geq 3$ , 2, 1 and 0 types of geometric quality criteria respectively. A grey segment represents the fraction of residues that are not modelled. The numeric value for each fraction is indicated below the corresponding segment, with a dot representing fractions  $\leq 5\%$ . The upper red bar (where present) indicates the fraction of residues that have poor fit to the electron density. The numeric value is given above the bar.

Mol	Chain	Length	Quality of chain
1	A	329	

The following table lists non-polymeric compounds, carbohydrate monomers and non-standard residues in protein, DNA, RNA chains that are outliers for geometric or electron-density-fit criteria:

Mol	Type	Chain	Res	Chirality	Geometry	Clashes	Electron density
5	GOL	A	470[B]	-	X	X	-

*Continued on next page...*

*Continued from previous page...*

<b>Mol</b>	<b>Type</b>	<b>Chain</b>	<b>Res</b>	<b>Chirality</b>	<b>Geometry</b>	<b>Clashes</b>	<b>Electron density</b>
5	GOL	A	471	-	X	-	-

## 2 Entry composition [i](#)

There are 6 unique types of molecules in this entry. The entry contains 2827 atoms, of which 0 are hydrogens and 0 are deuteriums.

In the tables below, the ZeroOcc column contains the number of atoms modelled with zero occupancy, the AltConf column contains the number of residues with at least one atom in alternate conformation and the Trace column contains the number of residues modelled with at most 2 atoms.

- Molecule 1 is a protein called Methionine aminopeptidase 1.

Mol	Chain	Residues	Atoms					ZeroOcc	AltConf	Trace
			Total	C	N	O	S			
1	A	304	2445	1539	433	449	24	0	13	0

There are 25 discrepancies between the modelled and reference sequences:

Chain	Residue	Modelled	Actual	Comment	Reference
A	65	MET	-	initiating methionine	UNP P53582
A	66	GLY	-	cloning artifact	UNP P53582
A	67	SER	-	cloning artifact	UNP P53582
A	68	SER	-	cloning artifact	UNP P53582
A	69	HIS	-	expression tag	UNP P53582
A	70	HIS	-	expression tag	UNP P53582
A	71	HIS	-	expression tag	UNP P53582
A	72	HIS	-	expression tag	UNP P53582
A	73	HIS	-	expression tag	UNP P53582
A	74	HIS	-	expression tag	UNP P53582
A	75	SER	-	cloning artifact	UNP P53582
A	76	SER	-	cloning artifact	UNP P53582
A	77	GLY	-	cloning artifact	UNP P53582
A	78	LEU	-	cloning artifact	UNP P53582
A	79	VAL	-	cloning artifact	UNP P53582
A	80	PRO	-	cloning artifact	UNP P53582
A	81	ARG	-	cloning artifact	UNP P53582
A	82	GLY	-	cloning artifact	UNP P53582
A	83	SER	-	cloning artifact	UNP P53582
A	84	HIS	-	cloning artifact	UNP P53582
A	85	MET	-	cloning artifact	UNP P53582
A	86	LEU	-	cloning artifact	UNP P53582
A	87	GLU	-	cloning artifact	UNP P53582
A	88	ASP	-	cloning artifact	UNP P53582
A	89	PRO	-	cloning artifact	UNP P53582

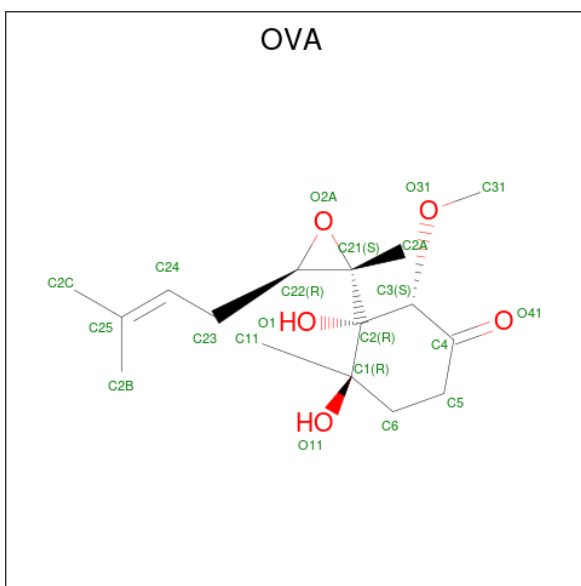
- Molecule 2 is COBALT (II) ION (three-letter code: CO) (formula: Co).

Mol	Chain	Residues	Atoms	ZeroOcc	AltConf
2	A	3	Total Co 3 3	0	0

- Molecule 3 is POTASSIUM ION (three-letter code: K) (formula: K).

Mol	Chain	Residues	Atoms	ZeroOcc	AltConf
3	A	1	Total K 1 1	0	0

- Molecule 4 is 3,4-DIHYDROXY-2-METHOXY-4-METHYL-3-[2-METHYL-3-(3-METHYLBUT-2-ENYL) -OXIRANYL]-CYCLOHEXANONE (three-letter code: OVA) (formula: C<sub>16</sub>H<sub>26</sub>O<sub>5</sub>).



Mol	Chain	Residues	Atoms	ZeroOcc	AltConf
4	A	1	Total C O 21 16 5	0	0

- Molecule 5 is GLYCEROL (three-letter code: GOL) (formula: C<sub>3</sub>H<sub>8</sub>O<sub>3</sub>).



Mol	Chain	Residues	Atoms	ZeroOcc	AltConf
5	A	1	Total C O 12 6 6	0	1
5	A	1	Total C O 6 3 3	0	0

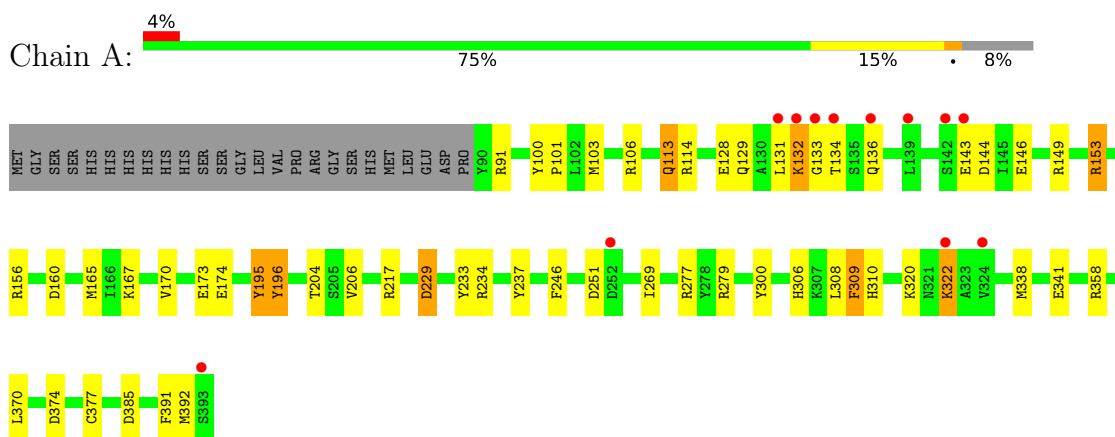
- Molecule 6 is water.

Mol	Chain	Residues	Atoms	ZeroOcc	AltConf
6	A	339	Total O 339 339	0	0

### 3 Residue-property plots [i](#)

These plots are drawn for all protein, RNA, DNA and oligosaccharide chains in the entry. The first graphic for a chain summarises the proportions of the various outlier classes displayed in the second graphic. The second graphic shows the sequence view annotated by issues in geometry and electron density. Residues are color-coded according to the number of geometric quality criteria for which they contain at least one outlier: green = 0, yellow = 1, orange = 2 and red = 3 or more. A red dot above a residue indicates a poor fit to the electron density ( $RSRZ > 2$ ). Stretches of 2 or more consecutive residues without any outlier are shown as a green connector. Residues present in the sample, but not in the model, are shown in grey.

- Molecule 1: Methionine aminopeptidase 1



## 4 Data and refinement statistics i

Property	Value	Source
Space group	P 1 21 1	Depositor
Cell constants a, b, c, $\alpha$ , $\beta$ , $\gamma$	47.57Å 77.69Å 48.64Å 90.00° 90.63° 90.00°	Depositor
Resolution (Å)	20.00 – 1.10 40.57 – 1.08	Depositor EDS
% Data completeness (in resolution range)	(Not available) (20.00-1.10) 88.4 (40.57-1.08)	Depositor EDS
$R_{merge}$	0.05	Depositor
$R_{sym}$	(Not available)	Depositor
$\langle I/\sigma(I) \rangle$ <sup>1</sup>	0.50 (at 1.08Å)	Xtriage
Refinement program	SHELXL-97	Depositor
R, $R_{free}$	0.117 , 0.145 0.123 , 0.125	Depositor DCC
$R_{free}$ test set	13351 reflections (10.01%)	wwPDB-VP
Wilson B-factor (Å <sup>2</sup> )	13.1	Xtriage
Anisotropy	0.458	Xtriage
Bulk solvent $k_{sol}$ (e/Å <sup>3</sup> ), $B_{sol}$ (Å <sup>2</sup> )	0.35 , 63.7	EDS
L-test for twinning <sup>2</sup>	$\langle  L  \rangle = 0.49$ , $\langle L^2 \rangle = 0.33$	Xtriage
Estimated twinning fraction	0.000 for l,k,-h 0.024 for h,-k,-l 0.021 for l,-k,h	Xtriage
$F_o, F_c$ correlation	0.98	EDS
Total number of atoms	2827	wwPDB-VP
Average B, all atoms (Å <sup>2</sup> )	21.0	wwPDB-VP

Xtriage's analysis on translational NCS is as follows: *The largest off-origin peak in the Patterson function is 8.46% of the height of the origin peak. No significant pseudotranslation is detected.*

<sup>1</sup>Intensities estimated from amplitudes.

<sup>2</sup>Theoretical values of  $\langle |L| \rangle$ ,  $\langle L^2 \rangle$  for acentric reflections are 0.5, 0.333 respectively for untwinned datasets, and 0.375, 0.2 for perfectly twinned datasets.



## 5 Model quality [i](#)

### 5.1 Standard geometry [i](#)

Bond lengths and bond angles in the following residue types are not validated in this section: K, OVA, GOL, CO

The Z score for a bond length (or angle) is the number of standard deviations the observed value is removed from the expected value. A bond length (or angle) with  $|Z| > 5$  is considered an outlier worth inspection. RMSZ is the root-mean-square of all Z scores of the bond lengths (or angles).

Mol	Chain	Bond lengths		Bond angles	
		RMSZ	# Z  >5	RMSZ	# Z  >5
1	A	0.99	1/2557 (0.0%)	1.54	44/3466 (1.3%)

All (1) bond length outliers are listed below:

Mol	Chain	Res	Type	Atoms	Z	Observed(Å)	Ideal(Å)
1	A	341	GLU	CD-OE1	6.84	1.33	1.25

All (44) bond angle outliers are listed below:

Mol	Chain	Res	Type	Atoms	Z	Observed(°)	Ideal(°)
1	A	279	ARG	NE-CZ-NH1	16.90	128.75	120.30
1	A	277	ARG	NE-CZ-NH2	-12.44	114.08	120.30
1	A	106	ARG	NE-CZ-NH2	11.92	126.26	120.30
1	A	91	ARG	NE-CZ-NH1	11.34	125.97	120.30
1	A	149	ARG	NE-CZ-NH2	-10.74	114.93	120.30
1	A	146	GLU	OE1-CD-OE2	-10.38	110.84	123.30
1	A	374	ASP	CB-CG-OD1	10.28	127.55	118.30
1	A	91	ARG	NE-CZ-NH2	-9.65	115.48	120.30
1	A	195	TYR	CG-CD1-CE1	8.80	128.34	121.30
1	A	279	ARG	NE-CZ-NH2	-8.49	116.06	120.30
1	A	309	PHE	CB-CG-CD1	8.40	126.68	120.80
1	A	251	ASP	CB-CG-OD1	8.37	125.84	118.30
1	A	196	TYR	CB-CG-CD2	7.94	125.77	121.00
1	A	106	ARG	NH1-CZ-NH2	-7.54	111.10	119.40
1	A	165[A]	MET	CA-CB-CG	-7.31	100.87	113.30
1	A	165[B]	MET	CA-CB-CG	-7.31	100.87	113.30
1	A	300	TYR	CB-CG-CD1	-6.76	116.94	121.00
1	A	133	GLY	C-N-CA	-6.43	105.62	121.70
1	A	237	TYR	CB-CG-CD1	6.37	124.82	121.00
1	A	156	ARG	NE-CZ-NH2	6.36	123.48	120.30

*Continued on next page...*

Continued from previous page...

Mol	Chain	Res	Type	Atoms	Z	Observed(°)	Ideal(°)
1	A	234	ARG	NE-CZ-NH2	-6.35	117.12	120.30
1	A	246	PHE	CB-CG-CD1	6.20	125.14	120.80
1	A	237	TYR	CB-CG-CD2	-6.14	117.31	121.00
1	A	136	GLN	CG-CD-OE1	-6.12	109.35	121.60
1	A	196	TYR	CG-CD1-CE1	6.11	126.19	121.30
1	A	358	ARG	NE-CZ-NH1	-5.80	117.40	120.30
1	A	174	GLU	CG-CD-OE1	5.79	129.87	118.30
1	A	217	ARG	NE-CZ-NH2	-5.74	117.43	120.30
1	A	113[A]	GLN	CB-CG-CD	5.73	126.50	111.60
1	A	113[B]	GLN	CB-CG-CD	5.73	126.50	111.60
1	A	132	LYS	C-N-CA	-5.72	110.28	122.30
1	A	153[A]	ARG	NE-CZ-NH1	5.61	123.11	120.30
1	A	153[B]	ARG	NE-CZ-NH1	5.61	123.11	120.30
1	A	338	MET	CG-SD-CE	5.52	109.03	100.20
1	A	234	ARG	CD-NE-CZ	5.49	131.29	123.60
1	A	229[A]	ASP	CB-CG-OD1	5.41	123.17	118.30
1	A	229[B]	ASP	CB-CG-OD1	5.41	123.17	118.30
1	A	149	ARG	NH1-CZ-NH2	5.36	125.30	119.40
1	A	385	ASP	CB-CG-OD2	5.36	123.12	118.30
1	A	233	TYR	CZ-CE2-CD2	5.22	124.50	119.80
1	A	277	ARG	NE-CZ-NH1	5.16	122.88	120.30
1	A	195	TYR	CB-CG-CD1	5.12	124.07	121.00
1	A	233	TYR	CB-CG-CD1	5.07	124.04	121.00
1	A	160	ASP	CB-CG-OD1	5.05	122.85	118.30

There are no chirality outliers.

There are no planarity outliers.

## 5.2 Too-close contacts [i](#)

In the following table, the Non-H and H(model) columns list the number of non-hydrogen atoms and hydrogen atoms in the chain respectively. The H(added) column lists the number of hydrogen atoms added and optimized by MolProbity. The Clashes column lists the number of clashes within the asymmetric unit, whereas Symm-Clashes lists symmetry-related clashes.

Mol	Chain	Non-H	H(model)	H(added)	Clashes	Symm-Clashes
1	A	2445	0	2394	25	0
2	A	3	0	0	0	0
3	A	1	0	0	0	0
4	A	21	0	25	0	0
5	A	18	0	20	6	0

Continued on next page...

Continued from previous page...

Mol	Chain	Non-H	H(model)	H(added)	Clashes	Symm-Clashes
6	A	339	0	0	8	0
All	All	2827	0	2439	29	0

The all-atom clashscore is defined as the number of clashes found per 1000 atoms (including hydrogen atoms). The all-atom clashscore for this structure is 6.

All (29) close contacts within the same asymmetric unit are listed below, sorted by their clash magnitude.

Atom-1	Atom-2	Interatomic distance (Å)	Clash overlap (Å)
1:A:392[B]:MET:SD	6:A:855:HOH:O	1.94	1.19
5:A:470[B]:GOL:C1	5:A:470[B]:GOL:C2	2.42	0.97
5:A:470[B]:GOL:C1	5:A:470[B]:GOL:O1	2.15	0.94
1:A:322:LYS:HD2	6:A:588:HOH:O	1.85	0.75
1:A:131:LEU:O	1:A:134:THR:HG22	1.93	0.69
5:A:470[A]:GOL:H11	6:A:552:HOH:O	1.98	0.64
1:A:392[B]:MET:CE	6:A:855:HOH:O	2.35	0.63
1:A:370[B]:LEU:HD23	1:A:377:CYS:SG	2.39	0.62
1:A:391:PHE:CE1	1:A:392[B]:MET:HE2	2.37	0.60
1:A:103:MET:HE2	1:A:173:GLU:CD	2.26	0.54
1:A:131:LEU:HD12	1:A:308:LEU:HD11	1.89	0.54
1:A:206:VAL:H	5:A:470[B]:GOL:H12	1.74	0.53
1:A:229[B]:ASP:OD2	6:A:712:HOH:O	2.18	0.53
1:A:391:PHE:HE1	1:A:392[B]:MET:HE2	1.74	0.52
1:A:153[A]:ARG:HG3	6:A:561:HOH:O	2.10	0.51
1:A:167:LYS:HE2	1:A:170:VAL:CG2	2.42	0.49
1:A:101:PRO:HB2	6:A:865:HOH:O	2.13	0.48
5:A:470[B]:GOL:C2	5:A:470[B]:GOL:O1	2.62	0.48
1:A:129:GLN:NE2	1:A:196:TYR:OH	2.47	0.48
1:A:204:THR:O	5:A:470[B]:GOL:H11	2.17	0.45
1:A:320:LYS:NZ	6:A:781:HOH:O	2.49	0.43
1:A:391:PHE:CE1	1:A:392[B]:MET:HG2	2.53	0.43
1:A:100:TYR:HB3	1:A:101:PRO:HA	2.01	0.43
1:A:113[A]:GLN:HG2	1:A:114:ARG:N	2.34	0.42
1:A:143:GLU:HG2	1:A:144:ASP:N	2.27	0.42
1:A:195:TYR:OH	1:A:310:HIS:CD2	2.73	0.41
1:A:103:MET:HE2	1:A:173:GLU:OE1	2.20	0.41
1:A:269:ILE:HG12	1:A:370[A]:LEU:HD11	2.03	0.40
1:A:128:GLU:OE1	1:A:195:TYR:OH	2.39	0.40

There are no symmetry-related clashes.

## 5.3 Torsion angles [i](#)

### 5.3.1 Protein backbone [i](#)

In the following table, the Percentiles column shows the percent Ramachandran outliers of the chain as a percentile score with respect to all X-ray entries followed by that with respect to entries of similar resolution.

The Analysed column shows the number of residues for which the backbone conformation was analysed, and the total number of residues.

Mol	Chain	Analysed	Favoured	Allowed	Outliers	Percentiles
1	A	315/329 (96%)	310 (98%)	4 (1%)	1 (0%)	41 15

All (1) Ramachandran outliers are listed below:

Mol	Chain	Res	Type
1	A	306	HIS

### 5.3.2 Protein sidechains [i](#)

In the following table, the Percentiles column shows the percent sidechain outliers of the chain as a percentile score with respect to all X-ray entries followed by that with respect to entries of similar resolution.

The Analysed column shows the number of residues for which the sidechain conformation was analysed, and the total number of residues.

Mol	Chain	Analysed	Rotameric	Outliers	Percentiles
1	A	274/283 (97%)	271 (99%)	3 (1%)	73 40

All (3) residues with a non-rotameric sidechain are listed below:

Mol	Chain	Res	Type
1	A	132	LYS
1	A	309	PHE
1	A	322	LYS

Sometimes sidechains can be flipped to improve hydrogen bonding and reduce clashes. All (4) such sidechains are listed below:

Mol	Chain	Res	Type
1	A	99	HIS
1	A	129	GLN

*Continued on next page...*

*Continued from previous page...*

Mol	Chain	Res	Type
1	A	197	ASN
1	A	365	GLN

### 5.3.3 RNA [i](#)

There are no RNA molecules in this entry.

### 5.4 Non-standard residues in protein, DNA, RNA chains [i](#)

There are no non-standard protein/DNA/RNA residues in this entry.

### 5.5 Carbohydrates [i](#)

There are no monosaccharides in this entry.

### 5.6 Ligand geometry [i](#)

Of 8 ligands modelled in this entry, 4 are monoatomic - leaving 4 for Mogul analysis.

In the following table, the Counts columns list the number of bonds (or angles) for which Mogul statistics could be retrieved, the number of bonds (or angles) that are observed in the model and the number of bonds (or angles) that are defined in the Chemical Component Dictionary. The Link column lists molecule types, if any, to which the group is linked. The Z score for a bond length (or angle) is the number of standard deviations the observed value is removed from the expected value. A bond length (or angle) with  $|Z| > 2$  is considered an outlier worth inspection. RMSZ is the root-mean-square of all Z scores of the bond lengths (or angles).

Mol	Type	Chain	Res	Link	Bond lengths			Bond angles		
					Counts	RMSZ	# Z  > 2	Counts	RMSZ	# Z  > 2
5	GOL	A	470[B]	-	5,5,5	12.66	3 (60%)	5,5,5	5.71	5 (100%)
5	GOL	A	470[A]	-	5,5,5	1.72	1 (20%)	5,5,5	1.10	1 (20%)
5	GOL	A	471	2	5,5,5	1.45	1 (20%)	5,5,5	3.23	4 (80%)
4	OVA	A	480	1	21,22,22	1.94	5 (23%)	22,36,36	3.96	14 (63%)

In the following table, the Chirals column lists the number of chiral outliers, the number of chiral centers analysed, the number of these observed in the model and the number defined in the Chemical Component Dictionary. Similar counts are reported in the Torsion and Rings columns. '-' means no outliers of that kind were identified.

Mol	Type	Chain	Res	Link	Chirals	Torsions	Rings
5	GOL	A	470[B]	-	-	3/4/4/4	-
5	GOL	A	470[A]	-	-	1/4/4/4	-
5	GOL	A	471	2	-	4/4/4/4	-
4	OVA	A	480	1	-	0/9/49/49	0/2/2/2

All (10) bond length outliers are listed below:

Mol	Chain	Res	Type	Atoms	Z	Observed(Å)	Ideal(Å)
5	A	470[B]	GOL	C1-C2	22.02	2.42	1.51
5	A	470[B]	GOL	O1-C1	17.23	2.15	1.42
4	A	480	OVA	C21-C22	5.02	1.58	1.47
5	A	470[B]	GOL	O2-C2	-4.33	1.30	1.43
5	A	470[A]	GOL	O3-C3	3.27	1.56	1.42
4	A	480	OVA	C11-C1	3.16	1.57	1.52
5	A	471	GOL	O2-C2	-2.75	1.35	1.43
4	A	480	OVA	C2B-C25	2.64	1.57	1.50
4	A	480	OVA	C2A-C21	2.60	1.56	1.51
4	A	480	OVA	C1-C2	-2.23	1.54	1.57

All (24) bond angle outliers are listed below:

Mol	Chain	Res	Type	Atoms	Z	Observed(°)	Ideal(°)
4	A	480	OVA	C2C-C25-C24	8.52	147.28	122.65
5	A	470[B]	GOL	O1-C1-C2	-8.46	69.64	110.20
4	A	480	OVA	C2C-C25-C2B	-7.89	97.18	114.60
5	A	470[B]	GOL	O2-C2-C3	7.70	143.04	109.12
4	A	480	OVA	C21-O2A-C22	7.63	66.61	60.81
4	A	480	OVA	C23-C24-C25	4.68	139.20	128.33
4	A	480	OVA	O11-C1-C2	-4.62	102.68	108.56
4	A	480	OVA	O2A-C21-C22	-4.52	54.95	59.29
5	A	471	GOL	O3-C3-C2	-4.51	88.57	110.20
5	A	470[B]	GOL	O2-C2-C1	-4.26	90.34	109.12
4	A	480	OVA	C31-O31-C3	-4.18	107.14	114.20
5	A	471	GOL	O1-C1-C2	-3.86	91.71	110.20
4	A	480	OVA	C11-C1-C2	3.60	118.31	114.46
4	A	480	OVA	O41-C4-C3	3.58	127.57	120.58
5	A	471	GOL	O2-C2-C1	3.49	124.51	109.12
5	A	470[B]	GOL	O3-C3-C2	-3.13	95.18	110.20
4	A	480	OVA	C6-C5-C4	-3.01	105.33	112.49
4	A	480	OVA	C2B-C25-C24	-2.85	114.41	122.65
4	A	480	OVA	C2A-C21-C22	2.53	128.97	118.94
4	A	480	OVA	C5-C4-C3	-2.30	112.80	116.44
4	A	480	OVA	O11-C1-C11	-2.21	102.47	107.56

*Continued on next page...*

*Continued from previous page...*

Mol	Chain	Res	Type	Atoms	Z	Observed(°)	Ideal(°)
5	A	470[B]	GOL	C3-C2-C1	-2.06	103.69	111.70
5	A	471	GOL	O2-C2-C3	2.03	118.08	109.12
5	A	470[A]	GOL	O2-C2-C3	2.00	117.95	109.12

There are no chirality outliers.

All (8) torsion outliers are listed below:

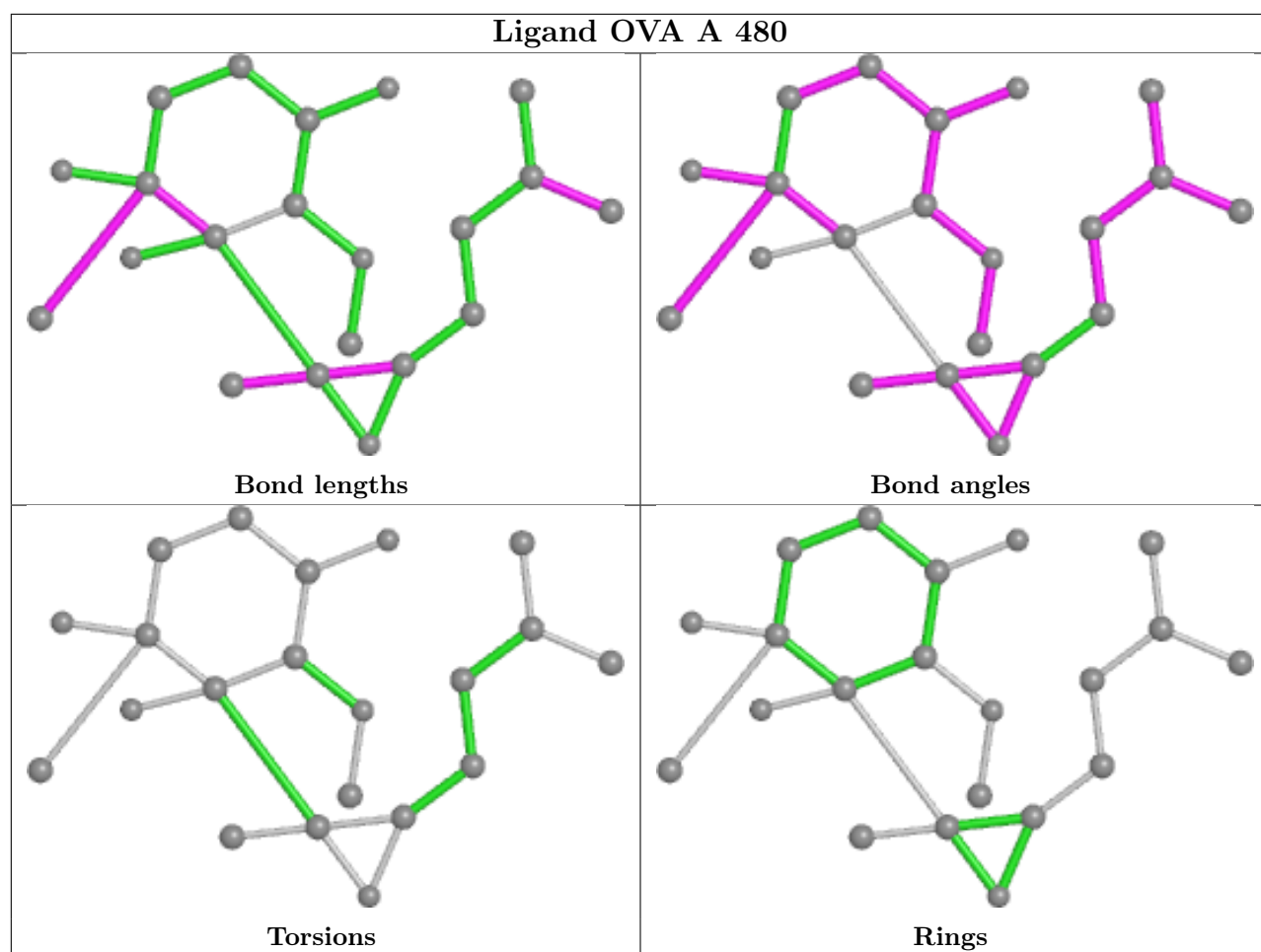
Mol	Chain	Res	Type	Atoms
5	A	470[B]	GOL	O1-C1-C2-O2
5	A	471	GOL	C1-C2-C3-O3
5	A	471	GOL	O1-C1-C2-O2
5	A	470[B]	GOL	O1-C1-C2-C3
5	A	470[A]	GOL	O1-C1-C2-O2
5	A	471	GOL	O1-C1-C2-C3
5	A	470[B]	GOL	O2-C2-C3-O3
5	A	471	GOL	O2-C2-C3-O3

There are no ring outliers.

2 monomers are involved in 6 short contacts:

Mol	Chain	Res	Type	Clashes	Symm-Clashes
5	A	470[B]	GOL	5	0
5	A	470[A]	GOL	1	0

The following is a two-dimensional graphical depiction of Mogul quality analysis of bond lengths, bond angles, torsion angles, and ring geometry for all instances of the Ligand of Interest. In addition, ligands with molecular weight > 250 and outliers as shown on the validation Tables will also be included. For torsion angles, if less than 5% of the Mogul distribution of torsion angles is within 10 degrees of the torsion angle in question, then that torsion angle is considered an outlier. Any bond that is central to one or more torsion angles identified as an outlier by Mogul will be highlighted in the graph. For rings, the root-mean-square deviation (RMSD) between the ring in question and similar rings identified by Mogul is calculated over all ring torsion angles. If the average RMSD is greater than 60 degrees and the minimal RMSD between the ring in question and any Mogul-identified rings is also greater than 60 degrees, then that ring is considered an outlier. The outliers are highlighted in purple. The color gray indicates Mogul did not find sufficient equivalents in the CSD to analyse the geometry.



## 5.7 Other polymers [i](#)

There are no such residues in this entry.

## 5.8 Polymer linkage issues [i](#)

There are no chain breaks in this entry.



## 6 Fit of model and data [i](#)

### 6.1 Protein, DNA and RNA chains [i](#)

In the following table, the column labelled ‘#RSRZ> 2’ contains the number (and percentage) of RSRZ outliers, followed by percent RSRZ outliers for the chain as percentile scores relative to all X-ray entries and entries of similar resolution. The OWAB column contains the minimum, median, 95<sup>th</sup> percentile and maximum values of the occupancy-weighted average B-factor per residue. The column labelled ‘Q< 0.9’ lists the number of (and percentage) of residues with an average occupancy less than 0.9.

Mol	Chain	Analysed	<RSRZ>	#RSRZ>2	OWAB(Å <sup>2</sup> )	Q<0.9
1	A	304/329 (92%)	0.02	12 (3%) 39 36	8, 17, 34, 67	0

All (12) RSRZ outliers are listed below:

Mol	Chain	Res	Type	RSRZ
1	A	133	GLY	6.3
1	A	131	LEU	4.5
1	A	132	LYS	3.9
1	A	322	LYS	3.2
1	A	136	GLN	3.2
1	A	143	GLU	3.0
1	A	139	LEU	2.9
1	A	393	SER	2.7
1	A	134	THR	2.6
1	A	324	VAL	2.5
1	A	142	SER	2.2
1	A	252	ASP	2.1

### 6.2 Non-standard residues in protein, DNA, RNA chains [i](#)

There are no non-standard protein/DNA/RNA residues in this entry.

### 6.3 Carbohydrates [i](#)

There are no monosaccharides in this entry.

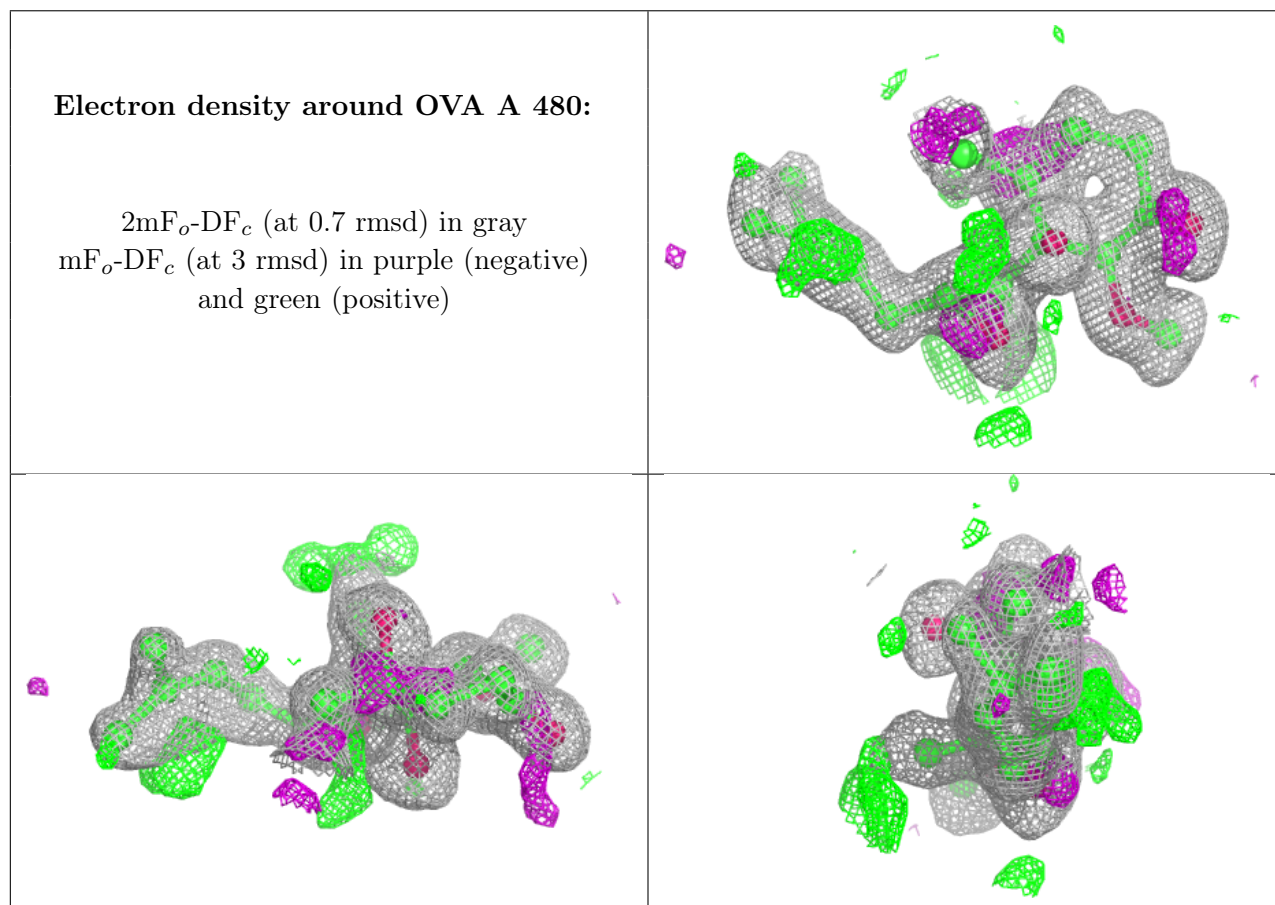
### 6.4 Ligands [i](#)

In the following table, the Atoms column lists the number of modelled atoms in the group and the number defined in the chemical component dictionary. The B-factors column lists the minimum,

median, 95<sup>th</sup> percentile and maximum values of B factors of atoms in the group. The column labelled 'Q< 0.9' lists the number of atoms with occupancy less than 0.9.

Mol	Type	Chain	Res	Atoms	RSCC	RSR	B-factors(Å <sup>2</sup> )	Q<0.9
5	GOL	A	471	6/6	0.78	0.14	52,56,64,91	0
5	GOL	A	470[A]	6/6	0.96	0.09	8,12,12,14	6
5	GOL	A	470[B]	6/6	0.96	0.09	12,13,17,22	6
4	OVA	A	480	21/21	0.96	0.07	14,17,25,35	0
2	CO	A	403	1/1	0.99	0.41	31,31,31,31	0
2	CO	A	401	1/1	1.00	0.06	10,10,10,10	0
3	K	A	404	1/1	1.00	0.07	14,14,14,14	0
2	CO	A	402	1/1	1.00	0.06	9,9,9,9	0

The following is a graphical depiction of the model fit to experimental electron density of all instances of the Ligand of Interest. In addition, ligands with molecular weight > 250 and outliers as shown on the geometry validation Tables will also be included. Each fit is shown from different orientation to approximate a three-dimensional view.



## 6.5 Other polymers [\(i\)](#)

There are no such residues in this entry.