



Full wwPDB X-ray Structure Validation Report ⓘ

May 29, 2020 – 06:22 am BST

PDB ID : 1GZU
Title : Crystal Structure of Human Nicotinamide Mononucleotide Adenylyltransferase
in Complex with NMN
Authors : Werner, E.; Ziegler, M.; Lerner, F.; Schweiger, M.; Heinemann, U.
Deposited on : 2002-06-06
Resolution : 2.90 Å(reported)

This is a Full wwPDB X-ray Structure Validation Report for a publicly released PDB entry.

We welcome your comments at validation@mail.wwpdb.org

A user guide is available at

<https://www.wwpdb.org/validation/2017/XrayValidationReportHelp>

with specific help available everywhere you see the ⓘ symbol.

The following versions of software and data (see [references ⓘ](#)) were used in the production of this report:

MolProbity : 4.02b-467
Mogul : 1.8.5 (274361), CSD as541be (2020)
Xtrriage (Phenix) : **NOT EXECUTED**
EDS : **NOT EXECUTED**
buster-report : 1.1.7 (2018)
Percentile statistics : 20191225.v01 (using entries in the PDB archive December 25th 2019)
Ideal geometry (proteins) : Engh & Huber (2001)
Ideal geometry (DNA, RNA) : Parkinson et al. (1996)
Validation Pipeline (wwPDB-VP) : 2.11

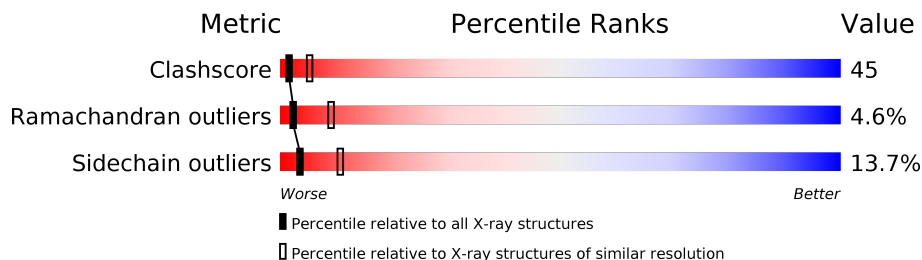
1 Overall quality at a glance

The following experimental techniques were used to determine the structure:

X-RAY DIFFRACTION

The reported resolution of this entry is 2.90 Å.

Percentile scores (ranging between 0-100) for global validation metrics of the entry are shown in the following graphic. The table shows the number of entries on which the scores are based.



Metric	Whole archive (#Entries)	Similar resolution (#Entries, resolution range(Å))
Clashscore	141614	2172 (2.90-2.90)
Ramachandran outliers	138981	2115 (2.90-2.90)
Sidechain outliers	138945	2117 (2.90-2.90)

The table below summarises the geometric issues observed across the polymeric chains and their fit to the electron density. The red, orange, yellow and green segments on the lower bar indicate the fraction of residues that contain outliers for ≥ 3 , 2, 1 and 0 types of geometric quality criteria respectively. A grey segment represents the fraction of residues that are not modelled. The numeric value for each fraction is indicated below the corresponding segment, with a dot representing fractions $\leq 5\%$.

Note EDS was not executed.

Mol	Chain	Length	Quality of chain
1	A	290	38% 33% 7% • 21%
1	B	290	38% 30% 10% • 21%
1	C	290	27% 39% 10% • 21%

The following table lists non-polymeric compounds, carbohydrate monomers and non-standard residues in protein, DNA, RNA chains that are outliers for geometric or electron-density-fit criteria:

Mol	Type	Chain	Res	Chirality	Geometry	Clashes	Electron density
2	NMN	A	501	X	-	-	-
2	NMN	B	501	X	-	-	-
2	NMN	C	501	X	-	-	-

2 Entry composition [i](#)

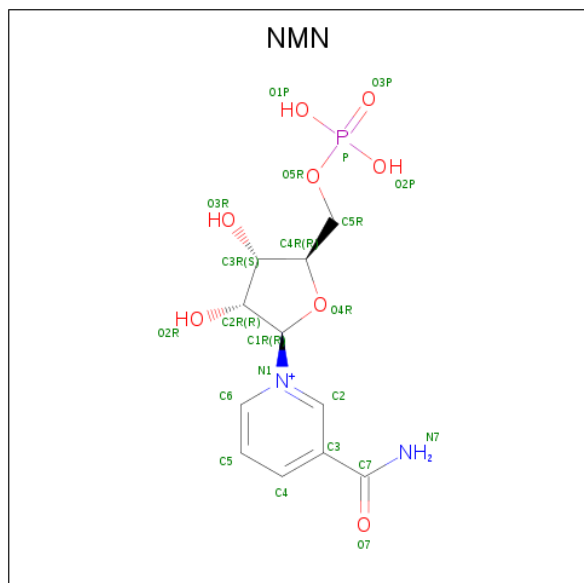
There are 2 unique types of molecules in this entry. The entry contains 5544 atoms, of which 0 are hydrogens and 0 are deuteriums.

In the tables below, the ZeroOcc column contains the number of atoms modelled with zero occupancy, the AltConf column contains the number of residues with at least one atom in alternate conformation and the Trace column contains the number of residues modelled with at most 2 atoms.

- Molecule 1 is a protein called NICOTINAMIDE MONONUCLEOTIDE ADENYLYL TRANSFERASE.

Mol	Chain	Residues	Atoms						ZeroOcc	AltConf	Trace
			Total	C	N	O	S	Se			
1	A	228	Total 1826	C 1168	N 321	O 331	S 3	Se 3	4	0	1
1	B	228	Total 1826	C 1168	N 321	O 331	S 3	Se 3	3	0	1
1	C	228	Total 1826	C 1168	N 321	O 331	S 3	Se 3	19	0	1

- Molecule 2 is BETA-NICOTINAMIDE RIBOSE MONOPHOSPHATE (three-letter code: NMN) (formula: C₁₁H₁₆N₂O₈P).



Mol	Chain	Residues	Atoms					ZeroOcc	AltConf
			Total	C	N	O	P		
2	A	1	Total 22	C 11	N 2	O 8	P 1	0	0
2	B	1	Total 22	C 11	N 2	O 8	P 1	0	0

Continued on next page...

Continued from previous page...

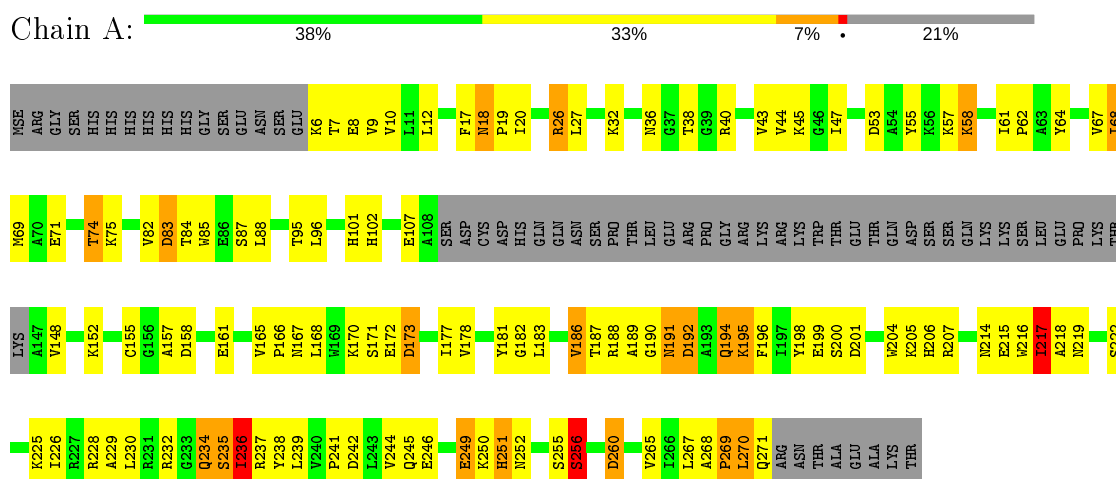
Mol	Chain	Residues	Atoms					ZeroOcc	AltConf
			Total	C	N	O	P		
2	C	1	22	11	2	8	1	0	0

3 Residue-property plots

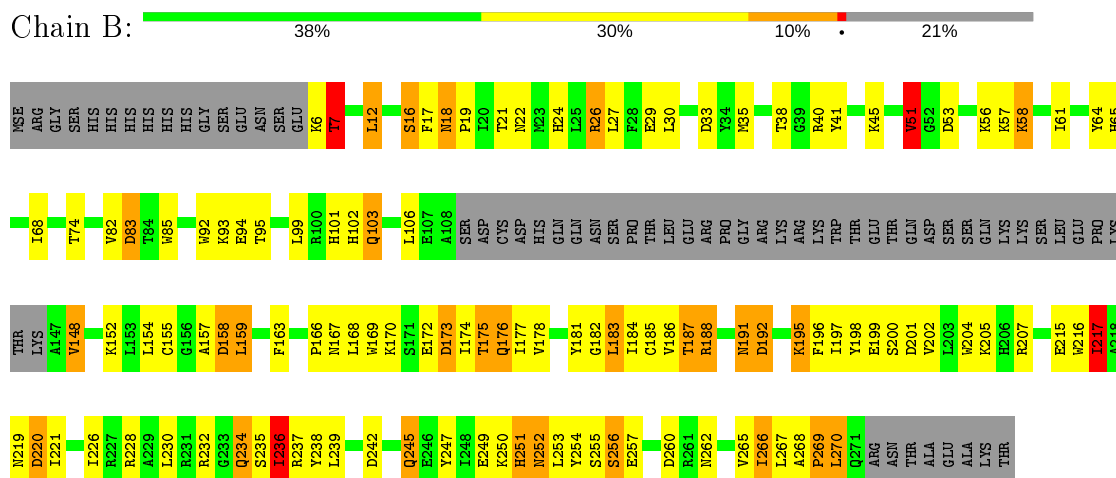
These plots are drawn for all protein, RNA and DNA chains in the entry. The first graphic for a chain summarises the proportions of the various outlier classes displayed in the second graphic. The second graphic shows the sequence view annotated by issues in geometry. Residues are color-coded according to the number of geometric quality criteria for which they contain at least one outlier: green = 0, yellow = 1, orange = 2 and red = 3 or more. Stretches of 2 or more consecutive residues without any outlier are shown as a green connector. Residues present in the sample, but not in the model, are shown in grey.

Note EDS was not executed.

- Molecule 1: NICOTINAMIDE MONONUCLEOTIDE ADENYLYL TRANSFERASE

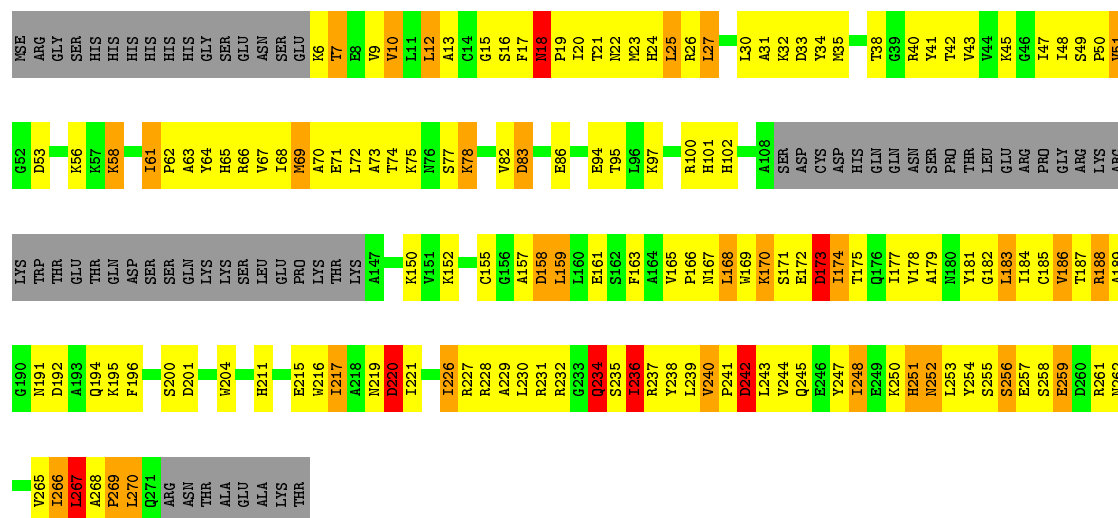


- Molecule 1: NICOTINAMIDE MONONUCLEOTIDE ADENYLYL TRANSFERASE



- Molecule 1: NICOTINAMIDE MONONUCLEOTIDE ADENYLYL TRANSFERASE





4 Data and refinement statistics

Xtrriage (Phenix) and EDS were not executed - this section is therefore incomplete.

Property	Value	Source
Space group	C 2 2 21	Depositor
Cell constants a, b, c, α , β , γ	140.80Å 235.70Å 89.00Å 90.00° 90.00° 90.00°	Depositor
Resolution (Å)	20.00 – 2.90	Depositor
% Data completeness (in resolution range)	86.0 (20.00-2.90)	Depositor
R_{merge}	0.07	Depositor
R_{sym}	(Not available)	Depositor
Refinement program	REFMAC 5.0	Depositor
R, R_{free}	0.246 , 0.286	Depositor
Estimated twinning fraction	No twinning to report.	Xtrriage
Total number of atoms	5544	wwPDB-VP
Average B, all atoms (Å ²)	53.0	wwPDB-VP

5 Model quality i

5.1 Standard geometry i

Bond lengths and bond angles in the following residue types are not validated in this section: NMN

The Z score for a bond length (or angle) is the number of standard deviations the observed value is removed from the expected value. A bond length (or angle) with $|Z| > 5$ is considered an outlier worth inspection. RMSZ is the root-mean-square of all Z scores of the bond lengths (or angles).

Mol	Chain	Bond lengths		Bond angles	
		RMSZ	# $ Z > 5$	RMSZ	# $ Z > 5$
1	A	0.85	1/1860 (0.1%)	0.84	7/2513 (0.3%)
1	B	0.79	0/1860	0.85	13/2513 (0.5%)
1	C	1.17	5/1860 (0.3%)	1.05	13/2513 (0.5%)
All	All	0.95	6/5580 (0.1%)	0.92	33/7539 (0.4%)

Chiral center outliers are detected by calculating the chiral volume of a chiral center and verifying if the center is modelled as a planar moiety or with the opposite hand. A planarity outlier is detected by checking planarity of atoms in a peptide group, atoms in a mainchain group or atoms of a sidechain that are expected to be planar.

Mol	Chain	#Chirality outliers	#Planarity outliers
1	C	0	1

All (6) bond length outliers are listed below:

Mol	Chain	Res	Type	Atoms	Z	Observed(Å)	Ideal(Å)
1	C	78	LYS	CG-CD	25.39	2.38	1.52
1	C	267	LEU	CB-CG	20.50	2.12	1.52
1	C	220	ASP	CB-CG	-18.46	1.12	1.51
1	A	260	ASP	CA-CB	8.63	1.73	1.53
1	C	150	LYS	CG-CD	-7.64	1.26	1.52
1	C	170	LYS	CB-CG	-6.96	1.33	1.52

All (33) bond angle outliers are listed below:

Mol	Chain	Res	Type	Atoms	Z	Observed(°)	Ideal(°)
1	C	78	LYS	CB-CG-CD	-20.62	57.98	111.60
1	C	78	LYS	CG-CD-CE	11.98	147.85	111.90
1	C	220	ASP	CA-CB-CG	10.68	136.90	113.40
1	C	267	LEU	CB-CG-CD2	10.09	128.16	111.00

Continued on next page...

Continued from previous page...

Mol	Chain	Res	Type	Atoms	Z	Observed(°)	Ideal(°)
1	C	267	LEU	CA-CB-CG	-9.59	93.23	115.30
1	C	170	LYS	CA-CB-CG	8.63	132.38	113.40
1	A	242	ASP	CB-CG-OD2	7.78	125.30	118.30
1	A	83	ASP	CB-CG-OD2	6.93	124.54	118.30
1	B	267	LEU	CB-CG-CD2	6.51	122.06	111.00
1	C	242	ASP	CB-CG-OD2	6.20	123.88	118.30
1	C	158	ASP	CB-CG-OD2	6.15	123.83	118.30
1	C	201	ASP	CB-CG-OD2	6.04	123.74	118.30
1	B	158	ASP	CB-CG-OD2	5.85	123.56	118.30
1	B	83	ASP	CB-CG-OD2	5.83	123.54	118.30
1	B	173	ASP	CB-CG-OD2	5.74	123.47	118.30
1	A	53	ASP	CB-CG-OD2	5.72	123.45	118.30
1	B	192	ASP	CB-CG-OD2	5.62	123.36	118.30
1	B	267	LEU	CA-CB-CG	-5.61	102.40	115.30
1	C	33	ASP	CB-CG-OD1	5.57	123.31	118.30
1	B	260	ASP	CB-CG-OD2	5.55	123.30	118.30
1	C	173	ASP	CB-CG-OD2	5.54	123.29	118.30
1	B	51	VAL	CB-CA-C	-5.48	100.99	111.40
1	A	158	ASP	CB-CG-OD2	5.45	123.20	118.30
1	B	201	ASP	CB-CG-OD2	5.43	123.19	118.30
1	B	220	ASP	CB-CG-OD2	5.42	123.18	118.30
1	A	201	ASP	CB-CG-OD2	5.42	123.17	118.30
1	C	150	LYS	CB-CG-CD	5.41	125.66	111.60
1	B	53	ASP	CB-CG-OD2	5.29	123.06	118.30
1	C	83	ASP	CB-CG-OD2	5.20	122.98	118.30
1	B	33	ASP	CB-CG-OD2	5.20	122.98	118.30
1	B	159	LEU	CA-CB-CG	5.16	127.17	115.30
1	A	192	ASP	CB-CG-OD2	5.09	122.88	118.30
1	A	260	ASP	CB-CG-OD2	5.05	122.84	118.30

There are no chirality outliers.

All (1) planarity outliers are listed below:

Mol	Chain	Res	Type	Group
1	C	220	ASP	Sidechain

5.2 Too-close contacts [i](#)

In the following table, the Non-H and H(model) columns list the number of non-hydrogen atoms and hydrogen atoms in the chain respectively. The H(added) column lists the number of hydrogen atoms added and optimized by MolProbity. The Clashes column lists the number of clashes within

the asymmetric unit, whereas Symm-Clashes lists symmetry related clashes.

Mol	Chain	Non-H	H(model)	H(added)	Clashes	Symm-Clashes
1	A	1826	0	1858	131	0
1	B	1826	0	1858	145	0
1	C	1826	0	1858	234	0
2	A	22	0	9	2	0
2	B	22	0	8	3	0
2	C	22	0	8	4	0
All	All	5544	0	5599	501	0

The all-atom clashscore is defined as the number of clashes found per 1000 atoms (including hydrogen atoms). The all-atom clashscore for this structure is 45.

All (501) close contacts within the same asymmetric unit are listed below, sorted by their clash magnitude.

Atom-1	Atom-2	Interatomic distance (Å)	Clash overlap (Å)
1:C:250:LYS:O	1:C:251:HIS:ND1	1.60	1.33
1:C:18:ASN:HB3	1:C:19:PRO:CD	1.57	1.32
1:C:27:LEU:HD22	1:C:186:VAL:CG2	1.69	1.21
1:C:168:LEU:HD23	1:C:169:TRP:CD1	1.75	1.20
1:B:58:LYS:HE2	1:B:58:LYS:N	1.59	1.17
1:A:18:ASN:HB3	1:A:19:PRO:CD	1.74	1.15
1:C:58:LYS:HD2	1:C:58:LYS:H	1.03	1.15
1:A:255:SER:O	1:A:256:SER:HB3	1.48	1.13
1:C:27:LEU:HD22	1:C:186:VAL:HG21	1.17	1.12
1:C:187:THR:HG22	1:C:189:ALA:H	1.08	1.09
1:B:18:ASN:HB3	1:B:19:PRO:CD	1.84	1.07
1:A:27:LEU:HD22	1:A:186:VAL:HG21	1.27	1.07
1:B:58:LYS:HE2	1:B:58:LYS:H	0.93	1.05
1:B:16:SER:HA	1:B:51:VAL:CG2	1.86	1.04
1:C:18:ASN:HB3	1:C:19:PRO:HD2	1.31	1.03
1:C:234:GLN:OE1	1:C:234:GLN:HA	1.59	1.02
1:B:58:LYS:CE	1:B:58:LYS:H	1.72	1.02
1:B:216:TRP:O	1:B:217:ILE:HD13	1.58	1.01
1:C:168:LEU:HD23	1:C:169:TRP:NE1	1.74	1.01
1:A:18:ASN:HB3	1:A:19:PRO:HD3	1.43	1.01
1:C:18:ASN:HB3	1:C:19:PRO:HD3	1.42	1.00
1:C:68:ILE:CG2	1:C:72:LEU:HD11	1.92	1.00
1:C:18:ASN:CB	1:C:19:PRO:CD	2.40	0.99
1:A:217:ILE:O	1:A:217:ILE:HG12	1.62	0.99
1:C:68:ILE:HG22	1:C:72:LEU:CD1	1.93	0.97
1:B:16:SER:HA	1:B:51:VAL:HG23	1.46	0.97

Continued on next page...

Continued from previous page...

Atom-1	Atom-2	Interatomic distance (Å)	Clash overlap (Å)
1:C:228:ARG:HA	1:C:231:ARG:NH1	1.77	0.97
1:C:17:PHE:HD2	1:C:20:ILE:HG13	1.26	0.95
1:C:228:ARG:HA	1:C:231:ARG:HH12	1.31	0.95
1:A:27:LEU:HD22	1:A:186:VAL:CG2	1.96	0.94
1:A:27:LEU:CD2	1:A:186:VAL:HG21	1.97	0.94
1:C:26:ARG:HH11	1:C:26:ARG:HG3	1.32	0.92
1:A:250:LYS:HE3	1:A:250:LYS:O	1.69	0.92
1:B:95:THR:OG1	2:B:501:NMN:HC2	1.70	0.91
1:C:187:THR:HG22	1:C:189:ALA:N	1.86	0.91
1:C:16:SER:HA	1:C:51:VAL:HG23	1.52	0.90
1:C:227:ARG:HG3	1:C:227:ARG:HH11	1.37	0.90
1:C:16:SER:HA	1:C:51:VAL:CG2	2.02	0.90
1:B:217:ILE:HG12	1:B:217:ILE:O	1.71	0.90
1:C:58:LYS:H	1:C:58:LYS:CD	1.84	0.90
1:C:250:LYS:O	1:C:251:HIS:CG	2.25	0.89
1:C:10:VAL:HG22	1:C:45:LYS:HG3	1.54	0.88
1:C:268:ALA:O	1:C:270:LEU:N	2.06	0.88
1:C:58:LYS:N	1:C:58:LYS:HD2	1.88	0.88
1:A:268:ALA:O	1:A:270:LEU:N	2.07	0.88
1:C:67:VAL:O	1:C:71:GLU:HG3	1.73	0.88
1:C:38:THR:HG23	1:C:40:ARG:H	1.37	0.88
1:C:27:LEU:CD2	1:C:186:VAL:CG2	2.52	0.88
1:C:247:TYR:HE1	1:C:253:LEU:HD11	1.39	0.87
1:C:226:ILE:HG23	1:C:236:ILE:HD11	1.54	0.87
1:B:157:ALA:HB2	1:B:187:THR:HG21	1.57	0.87
1:A:58:LYS:H	1:A:58:LYS:HD2	1.38	0.86
1:B:268:ALA:O	1:B:270:LEU:N	2.09	0.86
1:C:18:ASN:CB	1:C:19:PRO:HD3	2.04	0.86
1:B:18:ASN:HB3	1:B:19:PRO:HD3	1.58	0.84
1:C:168:LEU:CD2	1:C:169:TRP:NE1	2.40	0.84
1:C:183:LEU:HD12	1:C:184:ILE:N	1.91	0.84
1:C:17:PHE:C	1:C:18:ASN:O	2.13	0.84
1:A:38:THR:HG23	1:A:40:ARG:H	1.41	0.84
1:B:159:LEU:HD23	2:B:501:NMN:H5R1	1.60	0.84
1:C:70:ALA:O	1:C:73:ALA:HB3	1.78	0.83
1:C:183:LEU:HD12	1:C:183:LEU:C	1.96	0.83
1:C:10:VAL:HG22	1:C:45:LYS:CG	2.09	0.83
1:B:148:VAL:HG12	1:B:148:VAL:O	1.79	0.82
1:C:255:SER:O	1:C:256:SER:HB3	1.79	0.81
1:C:228:ARG:CA	1:C:231:ARG:HH12	1.93	0.81
1:A:187:THR:HG22	1:A:189:ALA:H	1.46	0.81

Continued on next page...

Continued from previous page...

Atom-1	Atom-2	Interatomic distance (Å)	Clash overlap (Å)
1:C:16:SER:N	2:C:501:NMN:O3P	2.13	0.81
1:A:250:LYS:O	1:A:251:HIS:CG	2.34	0.80
1:B:82:VAL:HG12	1:B:83:ASP:N	1.97	0.80
1:C:68:ILE:HG23	1:C:72:LEU:HD11	1.63	0.80
1:A:268:ALA:HB3	1:A:269:PRO:HD3	1.64	0.80
1:B:38:THR:HG23	1:B:40:ARG:H	1.46	0.80
1:A:95:THR:OG1	2:A:501:NMN:HC2	1.82	0.79
1:C:21:THR:HA	1:C:240:VAL:CG1	2.11	0.79
1:B:21:THR:H	1:B:24:HIS:HD2	1.30	0.79
1:B:168:LEU:HD12	1:B:268:ALA:CB	2.13	0.79
1:A:18:ASN:HB3	1:A:19:PRO:HD2	1.62	0.78
1:B:17:PHE:C	1:B:18:ASN:O	2.14	0.78
1:C:17:PHE:CD2	1:C:20:ILE:HG13	2.17	0.77
1:A:17:PHE:C	1:A:18:ASN:O	2.16	0.77
1:B:18:ASN:HB3	1:B:19:PRO:HD2	1.65	0.77
1:C:227:ARG:HG3	1:C:227:ARG:NH1	1.97	0.77
1:A:250:LYS:NZ	1:A:251:HIS:CE1	2.53	0.76
1:C:53:ASP:OD2	1:C:62:PRO:HA	1.86	0.76
1:C:49:SER:OG	1:C:86:GLU:OE1	2.03	0.76
1:C:168:LEU:CD2	1:C:169:TRP:HE1	1.99	0.76
1:A:204:TRP:CE3	1:B:232:ARG:HD3	2.21	0.76
1:A:27:LEU:CD2	1:A:186:VAL:CG2	2.63	0.75
1:A:18:ASN:O	1:A:19:PRO:C	2.25	0.75
1:A:36:ASN:OD1	1:A:43:VAL:HG23	1.86	0.74
1:B:168:LEU:HD12	1:B:268:ALA:HB1	1.69	0.74
1:C:95:THR:OG1	2:C:501:NMN:HC2	1.88	0.74
1:B:27:LEU:HG	1:B:186:VAL:HG21	1.70	0.74
1:C:22:ASN:ND2	1:C:239:LEU:C	2.42	0.73
1:C:68:ILE:HG22	1:C:72:LEU:HD11	1.57	0.73
1:A:217:ILE:CG1	1:A:217:ILE:O	2.37	0.73
1:B:35:MSE:O	1:B:38:THR:HG22	1.89	0.73
1:C:231:ARG:HH11	1:C:231:ARG:HB2	1.53	0.72
1:B:152:LYS:HD3	1:B:182:GLY:HA3	1.71	0.72
1:C:170:LYS:O	1:C:173:ASP:N	2.23	0.71
1:A:82:VAL:HG12	1:A:83:ASP:N	2.05	0.71
1:B:16:SER:HA	1:B:51:VAL:HG21	1.73	0.71
1:A:235:SER:O	1:A:236:ILE:HB	1.89	0.71
1:B:245:GLN:HE22	1:B:249:GLU:CD	1.94	0.70
1:C:21:THR:HA	1:C:240:VAL:HG12	1.72	0.70
1:C:69:MSE:HG2	1:C:244:VAL:HG13	1.73	0.70
1:B:19:PRO:HG3	1:B:254:TYR:CE2	2.26	0.70

Continued on next page...

Continued from previous page...

Atom-1	Atom-2	Interatomic distance (Å)	Clash overlap (Å)
1:C:17:PHE:HD2	1:C:20:ILE:CG1	2.04	0.70
1:B:215:GLU:HG2	1:B:215:GLU:O	1.90	0.70
1:B:29:GLU:OE1	1:B:29:GLU:HA	1.92	0.69
1:C:35:MSE:O	1:C:38:THR:HG22	1.93	0.69
1:C:241:PRO:HB2	1:C:244:VAL:HG23	1.73	0.69
1:C:68:ILE:C	1:C:72:LEU:HD12	2.11	0.69
1:C:82:VAL:HG12	1:C:83:ASP:H	1.57	0.69
1:A:95:THR:N	2:A:501:NMN:O7	2.26	0.68
1:C:27:LEU:CD2	1:C:186:VAL:HG21	2.10	0.68
1:C:6:LYS:O	1:C:7:THR:HB	1.93	0.68
1:B:215:GLU:OE2	1:B:219:ASN:HB2	1.94	0.68
1:C:10:VAL:CG2	1:C:45:LYS:HG2	2.24	0.68
1:C:231:ARG:HB2	1:C:231:ARG:NH1	2.09	0.67
1:A:58:LYS:CD	1:A:58:LYS:H	2.07	0.67
1:B:255:SER:O	1:B:256:SER:HB3	1.93	0.67
1:C:27:LEU:HD22	1:C:186:VAL:HG22	1.71	0.67
1:A:45:LYS:HE3	1:A:47:ILE:HD11	1.76	0.67
1:C:168:LEU:HD11	2:C:501:NMN:HC5	1.76	0.67
1:B:26:ARG:HD3	1:B:219:ASN:HD21	1.60	0.67
1:C:68:ILE:O	1:C:72:LEU:HD12	1.95	0.67
1:C:67:VAL:O	1:C:71:GLU:CG	2.43	0.67
1:B:56:LYS:HA	1:B:262:ASN:ND2	2.10	0.67
1:C:48:ILE:HG22	1:C:50:PRO:HD3	1.77	0.67
1:A:6:LYS:O	1:A:7:THR:HB	1.94	0.66
1:C:68:ILE:CG2	1:C:72:LEU:CD1	2.60	0.66
1:B:204:TRP:CZ3	1:C:232:ARG:HB3	2.30	0.66
1:C:227:ARG:NE	1:C:259:GLU:OE2	2.25	0.66
1:C:168:LEU:CD2	1:C:169:TRP:CD1	2.69	0.66
1:C:168:LEU:HD23	1:C:169:TRP:HE1	1.58	0.66
1:C:62:PRO:HG3	1:C:261:ARG:NH2	2.11	0.66
1:C:10:VAL:CG2	1:C:45:LYS:CG	2.74	0.66
1:C:34:TYR:HD2	1:C:35:MSE:HG2	1.59	0.66
1:A:55:TYR:CE2	1:A:57:LYS:HB2	2.31	0.65
1:C:152:LYS:HZ2	1:C:182:GLY:HA3	1.61	0.65
1:C:268:ALA:C	1:C:270:LEU:H	1.97	0.65
1:A:232:ARG:HD3	1:C:204:TRP:CE3	2.30	0.65
1:C:26:ARG:NH1	1:C:26:ARG:HG3	2.04	0.65
1:B:268:ALA:HB3	1:B:269:PRO:HD3	1.78	0.65
1:B:168:LEU:CD1	1:B:268:ALA:CB	2.75	0.65
1:C:255:SER:O	1:C:256:SER:CB	2.45	0.65
1:B:168:LEU:CD1	1:B:268:ALA:HB2	2.27	0.64

Continued on next page...

Continued from previous page...

Atom-1	Atom-2	Interatomic distance (Å)	Clash overlap (Å)
1:B:18:ASN:O	1:B:19:PRO:C	2.35	0.64
1:A:148:VAL:HG12	1:A:148:VAL:O	1.96	0.64
1:C:15:GLY:O	1:C:17:PHE:HD1	1.80	0.64
1:A:250:LYS:O	1:A:250:LYS:CE	2.46	0.64
1:C:21:THR:HA	1:C:240:VAL:HG13	1.79	0.64
1:A:222:SER:OG	1:A:225:LYS:HG2	1.98	0.64
1:B:148:VAL:CG1	1:B:148:VAL:O	2.46	0.63
1:C:187:THR:HG22	1:C:188:ARG:N	2.12	0.63
1:C:65:HIS:ND1	1:C:253:LEU:HD21	2.14	0.63
1:B:82:VAL:CG1	1:B:83:ASP:N	2.61	0.63
1:A:268:ALA:C	1:A:270:LEU:H	2.02	0.62
1:C:235:SER:O	1:C:237:ARG:N	2.33	0.62
1:B:255:SER:OG	1:B:256:SER:N	2.30	0.62
1:A:246:GLU:HA	1:A:249:GLU:HG2	1.79	0.62
1:A:268:ALA:HB3	1:A:269:PRO:CD	2.30	0.62
1:C:17:PHE:O	1:C:18:ASN:O	2.16	0.62
1:C:237:ARG:O	1:C:238:TYR:CB	2.47	0.62
1:B:268:ALA:N	1:B:269:PRO:HD2	2.15	0.62
1:A:88:LEU:HD23	1:A:88:LEU:N	2.15	0.61
1:B:103:GLN:NE2	1:B:103:GLN:HA	2.15	0.61
1:C:252:ASN:H	1:C:252:ASN:HD22	1.47	0.61
1:A:246:GLU:HA	1:A:249:GLU:CG	2.31	0.61
1:C:268:ALA:HB3	1:C:269:PRO:HD3	1.81	0.61
1:A:250:LYS:HZ1	1:A:251:HIS:CE1	2.17	0.61
1:C:237:ARG:O	1:C:238:TYR:HB2	2.00	0.61
1:A:55:TYR:CD2	1:A:57:LYS:HB2	2.36	0.61
1:B:65:HIS:CE1	1:B:253:LEU:HD21	2.36	0.61
1:C:250:LYS:O	1:C:251:HIS:CB	2.46	0.60
1:C:26:ARG:NH1	1:C:26:ARG:CG	2.64	0.60
1:A:230:LEU:HG	1:A:236:ILE:HD11	1.84	0.60
1:C:152:LYS:HG2	1:C:182:GLY:H	1.66	0.60
1:C:157:ALA:O	1:C:161:GLU:HG3	2.01	0.60
1:B:215:GLU:OE2	1:B:219:ASN:N	2.31	0.60
1:A:207:ARG:HG2	1:A:207:ARG:HH11	1.66	0.60
1:C:17:PHE:HB3	1:C:20:ILE:HD11	1.83	0.60
1:C:165:VAL:CG1	1:C:168:LEU:HB2	2.32	0.60
1:C:228:ARG:N	1:C:231:ARG:HH12	2.00	0.60
1:A:178:VAL:CG1	1:A:206:HIS:HB2	2.32	0.59
1:B:82:VAL:HG12	1:B:83:ASP:H	1.67	0.59
1:C:175:THR:O	1:C:178:VAL:HG12	2.02	0.59
1:A:170:LYS:O	1:A:173:ASP:N	2.34	0.59

Continued on next page...

Continued from previous page...

Atom-1	Atom-2	Interatomic distance (Å)	Clash overlap (Å)
1:C:34:TYR:HE2	1:C:35:MSE:SE	2.35	0.59
1:B:168:LEU:HD12	1:B:268:ALA:HB2	1.84	0.59
1:C:82:VAL:HG12	1:C:83:ASP:N	2.16	0.59
1:B:58:LYS:N	1:B:58:LYS:CE	2.46	0.59
1:C:26:ARG:NH1	1:C:30:LEU:HG	2.17	0.59
1:C:51:VAL:O	1:C:66:ARG:NH1	2.27	0.59
1:B:57:LYS:HA	1:B:58:LYS:HE2	1.85	0.59
1:C:266:ILE:HG13	1:C:268:ALA:H	1.67	0.58
1:A:170:LYS:O	1:A:173:ASP:HB2	2.03	0.58
1:A:226:ILE:HG23	1:A:236:ILE:CD1	2.33	0.58
1:A:246:GLU:O	1:A:249:GLU:HG3	2.02	0.58
1:B:174:ILE:O	1:B:178:VAL:HG23	2.02	0.58
1:B:250:LYS:O	1:B:251:HIS:CG	2.57	0.58
1:A:17:PHE:O	1:A:18:ASN:O	2.21	0.58
1:C:152:LYS:NZ	1:C:182:GLY:HA3	2.17	0.58
1:B:204:TRP:CE2	1:B:207:ARG:NH1	2.71	0.58
1:C:18:ASN:O	1:C:19:PRO:C	2.39	0.58
1:C:186:VAL:HG23	1:C:215:GLU:OE1	2.03	0.58
1:B:58:LYS:NZ	1:B:266:ILE:HG22	2.19	0.58
1:B:183:LEU:C	1:B:183:LEU:HD12	2.25	0.57
1:C:18:ASN:O	1:C:20:ILE:HD12	2.04	0.57
1:B:255:SER:O	1:B:256:SER:CB	2.52	0.57
1:B:268:ALA:H	1:B:269:PRO:HD2	1.70	0.57
1:A:237:ARG:HG3	1:A:238:TYR:CD2	2.39	0.57
1:A:228:ARG:HG3	1:A:228:ARG:HH11	1.70	0.57
1:C:237:ARG:HG2	1:C:238:TYR:CZ	2.39	0.57
1:C:34:TYR:CE2	1:C:35:MSE:SE	3.08	0.57
1:A:236:ILE:HA	1:A:239:LEU:HD12	1.86	0.56
1:C:226:ILE:HG12	1:C:236:ILE:HG12	1.86	0.56
1:B:27:LEU:HG	1:B:186:VAL:CG2	2.35	0.56
1:C:231:ARG:HD2	1:C:256:SER:HB3	1.86	0.56
1:C:268:ALA:N	1:C:269:PRO:HD2	2.21	0.56
1:C:266:ILE:O	1:C:269:PRO:HD2	2.04	0.56
1:C:22:ASN:ND2	1:C:238:TYR:O	2.38	0.56
1:C:61:ILE:HD12	1:C:253:LEU:HD22	1.87	0.56
1:B:204:TRP:CE3	1:C:232:ARG:HD3	2.41	0.56
1:A:168:LEU:HD12	1:A:268:ALA:CB	2.36	0.55
1:B:58:LYS:CD	1:B:58:LYS:H	2.19	0.55
1:C:268:ALA:N	1:C:269:PRO:CD	2.69	0.55
1:A:250:LYS:NZ	1:A:251:HIS:NE2	2.52	0.55
1:B:21:THR:N	1:B:24:HIS:HD2	2.01	0.55

Continued on next page...

Continued from previous page...

Atom-1	Atom-2	Interatomic distance (Å)	Clash overlap (Å)
1:B:82:VAL:CG1	1:B:83:ASP:H	2.19	0.55
1:A:204:TRP:CG	1:B:232:ARG:NH1	2.76	0.54
1:C:35:MSE:SE	1:C:184:ILE:HD11	2.58	0.54
1:C:68:ILE:HG22	1:C:72:LEU:HD12	1.83	0.54
1:B:17:PHE:O	1:B:18:ASN:O	2.25	0.54
1:B:152:LYS:HD3	1:B:182:GLY:CA	2.35	0.54
1:B:57:LYS:CA	1:B:58:LYS:HE2	2.36	0.54
1:C:65:HIS:CE1	1:C:253:LEU:HD21	2.42	0.54
1:B:177:ILE:O	1:B:181:TYR:O	2.25	0.54
1:C:34:TYR:CD2	1:C:35:MSE:N	2.76	0.54
1:C:228:ARG:HA	1:C:231:ARG:CZ	2.36	0.54
1:B:83:ASP:OD1	1:B:83:ASP:C	2.44	0.54
1:C:242:ASP:O	1:C:243:LEU:C	2.46	0.54
1:A:157:ALA:O	1:A:161:GLU:HG3	2.08	0.54
1:A:216:TRP:O	1:A:217:ILE:HG23	2.08	0.54
1:A:226:ILE:HG23	1:A:236:ILE:HD11	1.90	0.54
1:C:12:LEU:HD22	1:C:13:ALA:N	2.22	0.54
1:B:21:THR:H	1:B:24:HIS:CD2	2.17	0.53
1:B:250:LYS:O	1:B:251:HIS:CB	2.55	0.53
1:B:268:ALA:N	1:B:269:PRO:CD	2.71	0.53
1:B:268:ALA:C	1:B:270:LEU:H	2.04	0.53
1:C:7:THR:O	1:C:7:THR:HG22	2.07	0.53
1:B:57:LYS:C	1:B:58:LYS:HE2	2.25	0.53
1:C:61:ILE:HD11	1:C:65:HIS:CB	2.38	0.53
1:A:207:ARG:HG2	1:A:207:ARG:NH1	2.24	0.53
1:A:228:ARG:HD3	1:A:232:ARG:NH2	2.22	0.53
1:A:237:ARG:HG3	1:A:238:TYR:CE2	2.44	0.53
1:C:38:THR:HG21	1:C:41:TYR:HD2	1.74	0.53
1:A:18:ASN:CB	1:A:19:PRO:HD3	2.29	0.53
1:C:168:LEU:HD23	1:C:169:TRP:HD1	1.61	0.53
1:A:26:ARG:HH11	1:A:26:ARG:HG2	1.74	0.53
1:B:170:LYS:O	1:B:173:ASP:N	2.41	0.53
1:A:190:GLY:HA3	1:A:214:ASN:HD21	1.74	0.52
1:A:204:TRP:CZ3	1:B:232:ARG:HB3	2.44	0.52
1:C:177:ILE:HG22	1:C:178:VAL:N	2.25	0.52
1:A:82:VAL:CG1	1:A:83:ASP:N	2.71	0.52
1:C:247:TYR:HE1	1:C:253:LEU:CD1	2.17	0.52
1:C:252:ASN:N	1:C:252:ASN:HD22	2.06	0.52
1:A:87:SER:C	1:A:88:LEU:HD23	2.30	0.52
1:B:173:ASP:O	1:B:177:ILE:HG13	2.09	0.52
1:B:251:HIS:O	1:B:252:ASN:C	2.48	0.52

Continued on next page...

Continued from previous page...

Atom-1	Atom-2	Interatomic distance (Å)	Clash overlap (Å)
1:C:165:VAL:HG12	1:C:168:LEU:HB2	1.91	0.52
1:A:9:VAL:CG1	1:A:10:VAL:N	2.72	0.52
1:B:235:SER:O	1:B:236:ILE:HB	2.09	0.52
1:C:168:LEU:HD21	1:C:169:TRP:HE1	1.75	0.52
1:C:241:PRO:HD2	1:C:244:VAL:HG21	1.91	0.52
1:A:166:PRO:O	1:A:167:ASN:HB2	2.09	0.52
1:B:172:GLU:HG3	1:B:176:GLN:NE2	2.25	0.52
1:B:22:ASN:ND2	1:B:239:LEU:C	2.63	0.52
1:C:191:ASN:O	1:C:194:GLN:N	2.42	0.52
1:C:231:ARG:HG3	1:C:255:SER:O	2.10	0.52
1:C:63:ALA:O	1:C:64:TYR:C	2.47	0.52
1:A:96:LEU:HD12	1:A:96:LEU:O	2.10	0.51
1:B:12:LEU:HD12	1:B:99:LEU:HD23	1.91	0.51
1:C:16:SER:CA	1:C:51:VAL:CG2	2.84	0.51
1:C:221:ILE:CG2	1:C:226:ILE:HD12	2.40	0.51
1:C:235:SER:C	1:C:237:ARG:H	2.14	0.51
1:C:38:THR:HG23	1:C:40:ARG:N	2.17	0.51
1:A:18:ASN:CB	1:A:19:PRO:CD	2.62	0.51
1:C:18:ASN:CG	1:C:19:PRO:HD3	2.30	0.51
1:B:250:LYS:O	1:B:250:LYS:HG2	2.10	0.51
1:B:255:SER:OG	1:B:257:GLU:N	2.44	0.51
1:B:16:SER:CA	1:B:51:VAL:CG2	2.75	0.51
1:B:155:CYS:O	1:B:185:CYS:HA	2.11	0.51
1:A:250:LYS:CE	1:A:251:HIS:CE1	2.93	0.51
1:C:247:TYR:CE1	1:C:253:LEU:HD11	2.32	0.51
1:C:152:LYS:HG2	1:C:182:GLY:N	2.26	0.50
1:A:228:ARG:HD3	1:A:232:ARG:CZ	2.41	0.50
1:B:26:ARG:HH11	1:B:26:ARG:CG	2.24	0.50
1:B:204:TRP:CD2	1:B:207:ARG:NH1	2.80	0.50
1:C:170:LYS:O	1:C:171:SER:C	2.50	0.50
1:C:237:ARG:HG2	1:C:238:TYR:CE1	2.47	0.50
1:C:16:SER:CB	2:C:501:NMN:O3P	2.60	0.50
1:C:221:ILE:HG22	1:C:226:ILE:HD12	1.93	0.50
1:B:170:LYS:O	1:B:173:ASP:HB2	2.11	0.50
1:B:38:THR:HG21	1:B:41:TYR:HD2	1.77	0.50
1:A:191:ASN:O	1:A:192:ASP:C	2.50	0.49
1:A:251:HIS:O	1:A:252:ASN:C	2.51	0.49
1:C:32:LYS:HA	1:C:43:VAL:HG21	1.94	0.49
1:B:204:TRP:CZ2	1:B:207:ARG:NH2	2.80	0.49
1:C:16:SER:HA	1:C:51:VAL:HG21	1.92	0.49
1:A:177:ILE:O	1:A:181:TYR:O	2.29	0.49

Continued on next page...

Continued from previous page...

Atom-1	Atom-2	Interatomic distance (Å)	Clash overlap (Å)
1:B:234:GLN:NE2	1:B:234:GLN:HA	2.27	0.49
1:A:82:VAL:HG12	1:A:83:ASP:H	1.74	0.49
1:A:85:TRP:CE2	1:A:101:HIS:CE1	3.00	0.49
1:A:188:ARG:HD3	1:A:218:ALA:HA	1.95	0.49
1:C:19:PRO:HG3	1:C:254:TYR:CZ	2.48	0.49
1:C:191:ASN:O	1:C:192:ASP:C	2.51	0.49
1:C:230:LEU:HD21	1:C:236:ILE:HD12	1.95	0.49
1:C:236:ILE:HA	1:C:239:LEU:HD12	1.94	0.49
1:C:32:LYS:HG3	1:C:43:VAL:HG11	1.95	0.49
1:C:216:TRP:O	1:C:217:ILE:HB	2.13	0.48
1:C:245:GLN:O	1:C:248:ILE:HB	2.13	0.48
1:A:178:VAL:HG11	1:A:206:HIS:HB2	1.94	0.48
1:B:221:ILE:CG2	1:B:226:ILE:HD11	2.43	0.48
1:C:251:HIS:O	1:C:252:ASN:C	2.51	0.48
1:A:85:TRP:CD1	1:A:101:HIS:CE1	3.02	0.48
1:B:226:ILE:HG23	1:B:236:ILE:HD11	1.93	0.48
1:C:234:GLN:OE1	1:C:234:GLN:CA	2.44	0.48
1:A:269:PRO:O	1:A:271:GLN:N	2.46	0.48
1:B:83:ASP:OD2	1:B:102:HIS:HE1	1.95	0.48
1:B:166:PRO:O	1:B:167:ASN:HB2	2.12	0.48
1:A:255:SER:O	1:A:256:SER:CB	2.33	0.48
1:A:38:THR:CG2	1:A:40:ARG:H	2.17	0.48
1:B:198:TYR:CZ	1:C:228:ARG:HD2	2.49	0.48
1:B:266:ILE:HG13	1:B:268:ALA:H	1.79	0.48
1:B:64:TYR:O	1:B:68:ILE:HG13	2.13	0.48
1:B:57:LYS:HA	1:B:58:LYS:CE	2.43	0.48
1:C:22:ASN:ND2	1:C:239:LEU:CA	2.77	0.48
1:B:183:LEU:HD12	1:B:184:ILE:N	2.29	0.47
1:B:216:TRP:O	1:B:217:ILE:CD1	2.46	0.47
1:C:244:VAL:O	1:C:245:GLN:C	2.50	0.47
1:C:61:ILE:HD11	1:C:65:HIS:HB2	1.95	0.47
1:A:26:ARG:NH1	1:A:26:ARG:HG2	2.28	0.47
1:C:20:ILE:N	1:C:20:ILE:HD12	2.28	0.47
1:C:230:LEU:HA	1:C:230:LEU:HD23	1.66	0.47
1:B:204:TRP:CD2	1:C:232:ARG:HD3	2.50	0.47
1:C:229:ALA:HB1	1:C:234:GLN:HB2	1.96	0.47
1:A:168:LEU:HD12	1:A:268:ALA:HB1	1.96	0.47
1:C:227:ARG:HH11	1:C:227:ARG:CG	2.15	0.47
1:C:258:SER:O	1:C:261:ARG:HB2	2.15	0.47
1:A:83:ASP:OD2	1:A:102:HIS:CE1	2.68	0.47
1:C:211:HIS:N	1:C:211:HIS:CD2	2.82	0.47

Continued on next page...

Continued from previous page...

Atom-1	Atom-2	Interatomic distance (Å)	Clash overlap (Å)
1:B:38:THR:HG23	1:B:40:ARG:N	2.23	0.47
1:A:226:ILE:CG2	1:A:236:ILE:HD11	2.45	0.47
1:B:18:ASN:CB	1:B:19:PRO:CD	2.70	0.47
1:B:19:PRO:HD3	1:B:254:TYR:OH	2.16	0.46
1:C:56:LYS:HA	1:C:262:ASN:ND2	2.30	0.46
1:B:191:ASN:O	1:B:192:ASP:C	2.53	0.46
1:B:26:ARG:HH21	1:B:30:LEU:HD21	1.80	0.46
1:C:155:CYS:SG	1:C:183:LEU:HD11	2.55	0.46
1:C:237:ARG:O	1:C:238:TYR:CG	2.69	0.46
1:C:268:ALA:C	1:C:270:LEU:N	2.63	0.46
1:A:12:LEU:HD11	1:A:102:HIS:CD2	2.50	0.46
1:B:26:ARG:HG2	1:B:26:ARG:NH1	2.29	0.46
1:B:236:ILE:HA	1:B:236:ILE:HD12	1.70	0.46
1:A:152:LYS:HG3	1:A:182:GLY:CA	2.45	0.46
1:A:241:PRO:O	1:A:244:VAL:HB	2.14	0.46
1:C:172:GLU:HG3	1:C:172:GLU:O	2.16	0.46
1:C:47:ILE:HD13	1:C:102:HIS:CD2	2.51	0.46
1:C:165:VAL:HG11	1:C:168:LEU:HB2	1.97	0.46
1:C:94:GLU:O	1:C:97:LYS:N	2.49	0.45
1:A:232:ARG:HB3	1:C:204:TRP:CZ3	2.51	0.45
1:C:228:ARG:O	1:C:232:ARG:HG3	2.16	0.45
1:C:268:ALA:H	1:C:269:PRO:HD2	1.82	0.45
1:B:215:GLU:CG	1:B:215:GLU:O	2.60	0.45
1:C:178:VAL:HG13	1:C:179:ALA:N	2.30	0.45
1:A:187:THR:HG22	1:A:189:ALA:N	2.23	0.45
1:A:172:GLU:HG3	1:A:172:GLU:O	2.17	0.45
1:A:155:CYS:SG	1:A:183:LEU:HD11	2.57	0.45
1:A:229:ALA:HB1	1:A:234:GLN:HB2	1.98	0.45
1:B:221:ILE:HG21	1:B:226:ILE:HD11	1.98	0.45
1:C:215:GLU:OE2	1:C:219:ASN:HB2	2.16	0.45
1:C:219:ASN:O	1:C:220:ASP:HB3	2.15	0.45
1:B:85:TRP:CD2	1:B:101:HIS:CD2	3.04	0.45
1:B:266:ILE:O	1:B:269:PRO:HD2	2.16	0.45
1:A:216:TRP:C	1:A:217:ILE:HG23	2.37	0.45
1:A:82:VAL:CG1	1:A:83:ASP:H	2.29	0.45
1:B:268:ALA:HB3	1:B:269:PRO:CD	2.45	0.45
1:B:168:LEU:HD11	2:B:501:NMN:HC5	1.99	0.45
1:B:154:LEU:HD12	1:B:154:LEU:HA	1.73	0.45
1:B:245:GLN:NE2	1:B:249:GLU:CD	2.68	0.45
1:A:230:LEU:HG	1:A:236:ILE:CD1	2.48	0.44
1:B:163:PHE:HE1	1:B:169:TRP:CZ3	2.36	0.44

Continued on next page...

Continued from previous page...

Atom-1	Atom-2	Interatomic distance (Å)	Clash overlap (Å)
1:B:168:LEU:HA	1:B:268:ALA:HB1	2.00	0.44
1:C:23:MSE:HE3	1:C:221:ILE:C	2.37	0.44
1:C:12:LEU:HA	1:C:12:LEU:HD23	1.54	0.44
1:C:236:ILE:HG23	1:C:240:VAL:CG2	2.48	0.44
1:A:195:LYS:O	1:A:198:TYR:N	2.50	0.44
1:A:67:VAL:HG21	1:A:84:THR:HG22	1.98	0.44
1:C:166:PRO:O	1:C:167:ASN:HB2	2.17	0.44
1:C:178:VAL:CG1	1:C:179:ALA:N	2.81	0.44
1:A:178:VAL:CG1	1:A:206:HIS:CB	2.95	0.44
1:A:237:ARG:CG	1:A:238:TYR:CE2	3.01	0.44
1:B:155:CYS:SG	1:B:159:LEU:HB3	2.58	0.44
1:B:38:THR:HG21	1:B:41:TYR:CD2	2.53	0.44
1:C:230:LEU:CG	1:C:236:ILE:HD12	2.47	0.44
1:A:148:VAL:CG1	1:A:148:VAL:O	2.65	0.44
1:B:228:ARG:HG3	1:B:228:ARG:HH11	1.83	0.44
1:B:204:TRP:CZ2	1:B:207:ARG:CZ	3.01	0.44
1:C:266:ILE:HG13	1:C:267:LEU:N	2.29	0.44
1:C:74:THR:O	1:C:75:LYS:C	2.56	0.44
1:C:31:ALA:O	1:C:34:TYR:HB3	2.18	0.44
1:A:61:ILE:HB	1:A:62:PRO:HD2	2.00	0.43
1:B:103:GLN:NE2	1:B:103:GLN:CA	2.80	0.43
1:C:241:PRO:O	1:C:244:VAL:HB	2.18	0.43
1:C:155:CYS:O	1:C:185:CYS:HA	2.18	0.43
1:C:177:ILE:O	1:C:181:TYR:O	2.35	0.43
1:A:268:ALA:C	1:A:270:LEU:N	2.66	0.43
1:C:18:ASN:O	1:C:20:ILE:N	2.52	0.43
1:A:161:GLU:HA	1:A:196:PHE:CZ	2.53	0.43
1:A:235:SER:O	1:A:237:ARG:N	2.48	0.43
1:B:230:LEU:HD23	1:B:230:LEU:HA	1.69	0.43
1:C:237:ARG:HG2	1:C:238:TYR:CE2	2.53	0.43
1:A:191:ASN:O	1:A:194:GLN:N	2.51	0.43
1:A:32:LYS:HA	1:A:43:VAL:HG21	2.00	0.43
1:C:35:MSE:SE	1:C:184:ILE:CD1	3.17	0.43
1:C:221:ILE:CG2	1:C:226:ILE:CD1	2.96	0.43
1:C:30:LEU:HD23	1:C:30:LEU:HA	1.77	0.43
1:C:10:VAL:HG21	1:C:45:LYS:HG2	2.00	0.43
1:A:235:SER:C	1:A:237:ARG:H	2.22	0.43
1:A:250:LYS:HZ3	1:A:251:HIS:CE1	2.34	0.43
1:B:6:LYS:O	1:B:7:THR:CB	2.65	0.43
1:C:12:LEU:HD22	1:C:13:ALA:H	1.84	0.43
1:C:165:VAL:HG12	1:C:168:LEU:CB	2.49	0.43

Continued on next page...

Continued from previous page...

Atom-1	Atom-2	Interatomic distance (Å)	Clash overlap (Å)
1:A:245:GLN:HB3	1:A:245:GLN:HE21	1.72	0.43
1:B:237:ARG:O	1:B:238:TYR:HB2	2.19	0.43
1:B:19:PRO:HG3	1:B:254:TYR:CZ	2.54	0.43
1:C:100:ARG:O	1:C:101:HIS:C	2.58	0.42
1:C:9:VAL:CG1	1:C:10:VAL:N	2.82	0.42
1:C:23:MSE:HE3	1:C:221:ILE:O	2.19	0.42
1:C:27:LEU:CD2	1:C:186:VAL:HG22	2.36	0.42
1:A:165:VAL:HB	1:A:168:LEU:HD22	2.01	0.42
1:A:18:ASN:O	1:A:20:ILE:N	2.53	0.42
1:A:85:TRP:NE1	1:A:101:HIS:CE1	2.87	0.42
1:A:170:LYS:O	1:A:171:SER:C	2.58	0.42
1:C:20:ILE:O	1:C:240:VAL:CG1	2.68	0.42
1:C:228:ARG:CA	1:C:231:ARG:NH1	2.59	0.42
1:C:69:MSE:HE3	1:C:69:MSE:HB2	1.85	0.42
1:A:64:TYR:CE2	1:A:68:ILE:HD11	2.55	0.42
1:A:6:LYS:O	1:A:40:ARG:O	2.37	0.42
1:A:84:THR:O	1:A:88:LEU:HG	2.19	0.42
1:C:163:PHE:CZ	1:C:174:ILE:HG23	2.53	0.42
1:C:23:MSE:CE	1:C:221:ILE:N	2.83	0.42
1:A:165:VAL:HA	1:A:166:PRO:HD3	1.94	0.42
1:B:268:ALA:C	1:B:270:LEU:N	2.68	0.42
1:C:187:THR:CG2	1:C:189:ALA:H	2.01	0.42
1:A:195:LYS:O	1:A:196:PHE:C	2.58	0.42
1:B:183:LEU:C	1:B:183:LEU:CD1	2.89	0.41
1:B:92:TRP:CH2	1:B:94:GLU:HA	2.55	0.41
1:C:158:ASP:O	1:C:159:LEU:C	2.59	0.41
1:A:71:GLU:HG3	1:A:82:VAL:HG21	2.00	0.41
1:C:195:LYS:O	1:C:196:PHE:C	2.59	0.41
1:C:17:PHE:O	1:C:20:ILE:CD1	2.67	0.41
1:C:236:ILE:HG23	1:C:240:VAL:HG23	2.02	0.41
1:A:204:TRP:CD1	1:A:207:ARG:HD3	2.55	0.41
1:A:250:LYS:O	1:A:251:HIS:CD2	2.73	0.41
1:B:188:ARG:NH2	1:B:220:ASP:OD2	2.51	0.41
1:B:175:THR:O	1:B:176:GLN:C	2.57	0.41
1:B:226:ILE:HG23	1:B:236:ILE:CG1	2.51	0.41
1:B:235:SER:O	1:B:237:ARG:N	2.53	0.41
1:C:63:ALA:O	1:C:66:ARG:N	2.54	0.41
1:B:103:GLN:HA	1:B:103:GLN:HE21	1.83	0.41
1:B:65:HIS:ND1	1:B:247:TYR:OH	2.42	0.41
1:C:247:TYR:CD1	1:C:247:TYR:C	2.93	0.41
1:A:250:LYS:O	1:A:251:HIS:CB	2.69	0.41

Continued on next page...

Continued from previous page...

Atom-1	Atom-2	Interatomic distance (Å)	Clash overlap (Å)
1:B:219:ASN:O	1:B:220:ASP:CB	2.68	0.41
1:C:23:MSE:O	1:C:24:HIS:C	2.56	0.41
1:A:27:LEU:HA	1:A:27:LEU:HD23	1.51	0.41
1:B:92:TRP:CG	1:B:93:LYS:N	2.88	0.41
1:C:20:ILE:H	1:C:20:ILE:HD12	1.86	0.41
1:C:25:LEU:HD22	1:C:25:LEU:HA	1.73	0.41
1:B:168:LEU:HG	1:B:169:TRP:CD1	2.56	0.41
1:B:186:VAL:O	1:B:186:VAL:CG2	2.69	0.41
1:B:195:LYS:O	1:B:196:PHE:C	2.59	0.41
1:C:168:LEU:HG	1:C:168:LEU:O	2.20	0.41
1:C:18:ASN:OD1	1:C:254:TYR:CE1	2.74	0.41
1:C:23:MSE:O	1:C:26:ARG:N	2.54	0.41
1:A:27:LEU:HD21	1:A:215:GLU:OE2	2.21	0.41
1:C:53:ASP:OD2	1:C:63:ALA:N	2.49	0.40
1:B:195:LYS:HE2	1:B:195:LYS:HB2	1.72	0.40
1:C:82:VAL:CG1	1:C:83:ASP:H	2.31	0.40
1:C:221:ILE:O	1:C:221:ILE:HG22	2.22	0.40
1:C:229:ALA:O	1:C:230:LEU:C	2.59	0.40
1:A:152:LYS:HG3	1:A:182:GLY:HA3	2.04	0.40
1:A:74:THR:O	1:A:75:LYS:C	2.60	0.40
1:B:178:VAL:H	1:B:178:VAL:HG23	1.64	0.40
1:A:8:GLU:HB3	1:A:44:VAL:HG23	2.04	0.40
1:B:103:GLN:HE21	1:B:103:GLN:CA	2.35	0.40
1:C:187:THR:CG2	1:C:188:ARG:N	2.79	0.40

There are no symmetry-related clashes.

5.3 Torsion angles [i](#)

5.3.1 Protein backbone [i](#)

In the following table, the Percentiles column shows the percent Ramachandran outliers of the chain as a percentile score with respect to all X-ray entries followed by that with respect to entries of similar resolution.

The Analysed column shows the number of residues for which the backbone conformation was analysed, and the total number of residues.

Mol	Chain	Analysed	Favoured	Allowed	Outliers	Percentiles
1	A	224/290 (77%)	189 (84%)	25 (11%)	10 (4%)	2 9

Continued on next page...

Continued from previous page...

Mol	Chain	Analysed	Favoured	Allowed	Outliers	Percentiles	
1	B	224/290 (77%)	188 (84%)	26 (12%)	10 (4%)	2	9
1	C	224/290 (77%)	184 (82%)	29 (13%)	11 (5%)	2	8
All	All	672/870 (77%)	561 (84%)	80 (12%)	31 (5%)	2	9

All (31) Ramachandran outliers are listed below:

Mol	Chain	Res	Type
1	A	18	ASN
1	A	251	HIS
1	A	265	VAL
1	B	18	ASN
1	B	251	HIS
1	C	18	ASN
1	C	251	HIS
1	A	234	GLN
1	A	256	SER
1	A	269	PRO
1	B	234	GLN
1	B	236	ILE
1	B	256	SER
1	B	265	VAL
1	B	269	PRO
1	C	236	ILE
1	C	256	SER
1	C	265	VAL
1	C	269	PRO
1	A	270	LEU
1	B	252	ASN
1	C	234	GLN
1	C	270	LEU
1	A	236	ILE
1	A	217	ILE
1	A	219	ASN
1	B	7	THR
1	B	217	ILE
1	C	7	THR
1	C	217	ILE
1	C	252	ASN

5.3.2 Protein sidechains [i](#)

In the following table, the Percentiles column shows the percent sidechain outliers of the chain as a percentile score with respect to all X-ray entries followed by that with respect to entries of similar resolution.

The Analysed column shows the number of residues for which the sidechain conformation was analysed, and the total number of residues.

Mol	Chain	Analysed	Rotameric	Outliers	Percentiles	
1	A	199/253 (79%)	178 (89%)	21 (11%)	6	20
1	B	199/253 (79%)	168 (84%)	31 (16%)	2	8
1	C	199/253 (79%)	169 (85%)	30 (15%)	3	9
All	All	597/759 (79%)	515 (86%)	82 (14%)	3	11

All (82) residues with a non-rotameric sidechain are listed below:

Mol	Chain	Res	Type
1	A	26	ARG
1	A	58	LYS
1	A	68	ILE
1	A	69	MSE
1	A	74	THR
1	A	107	GLU
1	A	173	ASP
1	A	186	VAL
1	A	191	ASN
1	A	194	GLN
1	A	195	LYS
1	A	199	GLU
1	A	200	SER
1	A	205	LYS
1	A	217	ILE
1	A	235	SER
1	A	236	ILE
1	A	249	GLU
1	A	256	SER
1	A	260	ASP
1	A	267	LEU
1	B	7	THR
1	B	12	LEU
1	B	16	SER
1	B	26	ARG
1	B	45	LYS

Continued on next page...

Continued from previous page...

Mol	Chain	Res	Type
1	B	51	VAL
1	B	58	LYS
1	B	61	ILE
1	B	74	THR
1	B	103	GLN
1	B	106	LEU
1	B	148	VAL
1	B	158	ASP
1	B	175	THR
1	B	176	GLN
1	B	183	LEU
1	B	187	THR
1	B	188	ARG
1	B	191	ASN
1	B	195	LYS
1	B	197	ILE
1	B	199	GLU
1	B	200	SER
1	B	202	VAL
1	B	205	LYS
1	B	217	ILE
1	B	236	ILE
1	B	242	ASP
1	B	245	GLN
1	B	266	ILE
1	B	270	LEU
1	C	10	VAL
1	C	12	LEU
1	C	18	ASN
1	C	25	LEU
1	C	27	LEU
1	C	42	THR
1	C	51	VAL
1	C	58	LYS
1	C	61	ILE
1	C	69	MSE
1	C	77	SER
1	C	78	LYS
1	C	159	LEU
1	C	168	LEU
1	C	173	ASP
1	C	174	ILE

Continued on next page...

Continued from previous page...

Mol	Chain	Res	Type
1	C	183	LEU
1	C	186	VAL
1	C	188	ARG
1	C	200	SER
1	C	226	ILE
1	C	234	GLN
1	C	236	ILE
1	C	240	VAL
1	C	242	ASP
1	C	248	ILE
1	C	257	GLU
1	C	259	GLU
1	C	266	ILE
1	C	267	LEU

Some sidechains can be flipped to improve hydrogen bonding and reduce clashes. All (18) such sidechains are listed below:

Mol	Chain	Res	Type
1	A	101	HIS
1	A	167	ASN
1	A	214	ASN
1	A	245	GLN
1	B	22	ASN
1	B	24	HIS
1	B	76	ASN
1	B	102	HIS
1	B	103	GLN
1	B	176	GLN
1	B	180	ASN
1	B	191	ASN
1	B	219	ASN
1	B	234	GLN
1	B	245	GLN
1	C	22	ASN
1	C	176	GLN
1	C	252	ASN

5.3.3 RNA [i](#)

There are no RNA molecules in this entry.

5.4 Non-standard residues in protein, DNA, RNA chains [i](#)

There are no non-standard protein/DNA/RNA residues in this entry.

5.5 Carbohydrates [i](#)

There are no carbohydrates in this entry.

5.6 Ligand geometry [i](#)

3 ligands are modelled in this entry.

In the following table, the Counts columns list the number of bonds (or angles) for which Mogul statistics could be retrieved, the number of bonds (or angles) that are observed in the model and the number of bonds (or angles) that are defined in the Chemical Component Dictionary. The Link column lists molecule types, if any, to which the group is linked. The Z score for a bond length (or angle) is the number of standard deviations the observed value is removed from the expected value. A bond length (or angle) with $|Z| > 2$ is considered an outlier worth inspection. RMSZ is the root-mean-square of all Z scores of the bond lengths (or angles).

Mol	Type	Chain	Res	Link	Bond lengths			Bond angles		
					Counts	RMSZ	# Z > 2	Counts	RMSZ	# Z > 2
2	NMN	A	501	-	22,23,23	4.42	6 (27%)	30,34,34	2.38	12 (40%)
2	NMN	B	501	-	22,23,23	4.82	7 (31%)	30,34,34	2.33	11 (36%)
2	NMN	C	501	-	22,23,23	4.54	6 (27%)	30,34,34	2.15	9 (30%)

In the following table, the Chirals column lists the number of chiral outliers, the number of chiral centers analysed, the number of these observed in the model and the number defined in the Chemical Component Dictionary. Similar counts are reported in the Torsion and Rings columns. '-' means no outliers of that kind were identified.

Mol	Type	Chain	Res	Link	Chirals	Torsions	Rings
2	NMN	A	501	-	2/2/6/6	7/14/30/30	0/2/2/2
2	NMN	B	501	-	1/1/6/6	7/14/30/30	0/2/2/2
2	NMN	C	501	-	1/1/6/6	2/14/30/30	0/2/2/2

All (19) bond length outliers are listed below:

Mol	Chain	Res	Type	Atoms	Z	Observed(Å)	Ideal(Å)
2	B	501	NMN	C2R-C1R	-14.06	1.32	1.53
2	C	501	NMN	C2R-C1R	-13.23	1.33	1.53
2	A	501	NMN	C2R-C1R	-11.71	1.36	1.53

Continued on next page...

Continued from previous page...

Mol	Chain	Res	Type	Atoms	Z	Observed(Å)	Ideal(Å)
2	B	501	NMN	O3R-C3R	-9.46	1.20	1.43
2	A	501	NMN	O3R-C3R	-9.25	1.21	1.43
2	C	501	NMN	O2R-C2R	-8.81	1.22	1.43
2	A	501	NMN	C3R-C4R	-8.60	1.31	1.53
2	C	501	NMN	O3R-C3R	-8.51	1.22	1.43
2	B	501	NMN	C3R-C4R	-8.49	1.31	1.53
2	B	501	NMN	O2R-C2R	-8.49	1.23	1.43
2	A	501	NMN	O2R-C2R	-8.42	1.23	1.43
2	C	501	NMN	C3R-C4R	-8.14	1.32	1.53
2	B	501	NMN	C2R-C3R	-7.97	1.31	1.53
2	C	501	NMN	C2R-C3R	-7.06	1.34	1.53
2	A	501	NMN	C2R-C3R	-6.90	1.34	1.53
2	A	501	NMN	O4R-C1R	2.81	1.45	1.41
2	C	501	NMN	O4R-C1R	2.19	1.44	1.41
2	B	501	NMN	C3-C7	-2.08	1.47	1.50
2	B	501	NMN	O4R-C1R	2.06	1.44	1.41

All (32) bond angle outliers are listed below:

Mol	Chain	Res	Type	Atoms	Z	Observed(°)	Ideal(°)
2	A	501	NMN	C3R-C2R-C1R	5.81	109.72	100.98
2	C	501	NMN	C3R-C2R-C1R	5.34	109.01	100.98
2	B	501	NMN	C3R-C2R-C1R	5.27	108.91	100.98
2	A	501	NMN	O4R-C4R-C5R	4.65	124.68	109.37
2	B	501	NMN	O4R-C4R-C5R	4.27	123.42	109.37
2	A	501	NMN	O2R-C2R-C1R	4.10	125.99	110.85
2	B	501	NMN	O4R-C4R-C3R	4.04	113.11	105.11
2	B	501	NMN	O3R-C3R-C4R	3.85	122.19	111.05
2	C	501	NMN	O2R-C2R-C3R	3.61	123.49	111.82
2	B	501	NMN	O2R-C2R-C3R	3.60	123.45	111.82
2	B	501	NMN	O2R-C2R-C1R	3.58	124.06	110.85
2	C	501	NMN	O2P-P-O1P	3.57	121.29	107.64
2	C	501	NMN	O4R-C4R-C5R	3.56	121.10	109.37
2	C	501	NMN	O2R-C2R-C1R	3.55	123.95	110.85
2	B	501	NMN	O2P-P-O1P	3.52	121.10	107.64
2	A	501	NMN	C6-N1-C2	-3.47	118.81	121.97
2	C	501	NMN	O3R-C3R-C2R	3.44	122.95	111.82
2	C	501	NMN	O3R-C3R-C4R	3.42	120.94	111.05
2	A	501	NMN	O2R-C2R-C3R	3.22	122.24	111.82
2	A	501	NMN	O2P-P-O1P	3.21	119.89	107.64
2	B	501	NMN	O3R-C3R-C2R	3.11	121.88	111.82
2	A	501	NMN	C2R-C3R-C4R	3.10	108.66	102.64

Continued on next page...

Continued from previous page...

Mol	Chain	Res	Type	Atoms	Z	Observed(°)	Ideal(°)
2	A	501	NMN	O3R-C3R-C2R	3.05	121.69	111.82
2	B	501	NMN	O4R-C1R-C2R	2.89	111.15	106.93
2	A	501	NMN	O3R-C3R-C4R	2.89	119.40	111.05
2	A	501	NMN	C5-C4-C3	-2.68	117.17	120.34
2	C	501	NMN	C5R-C4R-C3R	2.67	125.18	115.18
2	A	501	NMN	O4R-C4R-C3R	2.63	110.32	105.11
2	A	501	NMN	C5R-C4R-C3R	2.48	124.47	115.18
2	B	501	NMN	C2-C3-C4	2.24	120.80	118.26
2	B	501	NMN	C3-C7-N7	-2.17	115.15	117.75
2	C	501	NMN	O4R-C4R-C3R	2.04	109.16	105.11

All (4) chirality outliers are listed below:

Mol	Chain	Res	Type	Atom
2	A	501	NMN	C2R
2	A	501	NMN	C4R
2	B	501	NMN	C2R
2	C	501	NMN	C2R

All (16) torsion outliers are listed below:

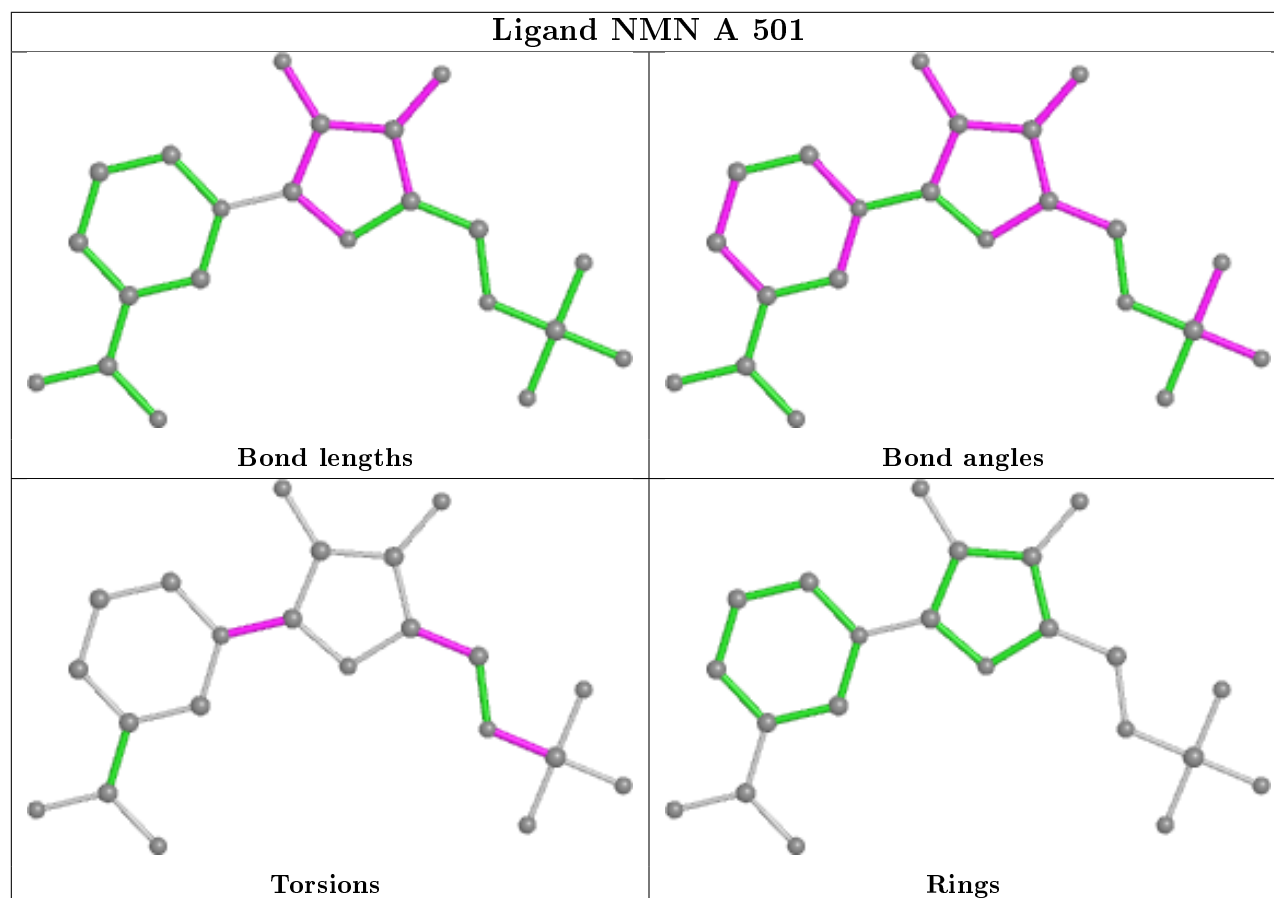
Mol	Chain	Res	Type	Atoms
2	A	501	NMN	C5R-O5R-P-O2P
2	A	501	NMN	O4R-C1R-N1-C2
2	A	501	NMN	O4R-C1R-N1-C6
2	B	501	NMN	C5R-O5R-P-O3P
2	B	501	NMN	C5R-O5R-P-O1P
2	B	501	NMN	C5R-O5R-P-O2P
2	B	501	NMN	O4R-C1R-N1-C2
2	B	501	NMN	O4R-C1R-N1-C6
2	C	501	NMN	C3R-C4R-C5R-O5R
2	B	501	NMN	O4R-C4R-C5R-O5R
2	A	501	NMN	C3R-C4R-C5R-O5R
2	C	501	NMN	O4R-C4R-C5R-O5R
2	B	501	NMN	C3R-C4R-C5R-O5R
2	A	501	NMN	C5R-O5R-P-O3P
2	A	501	NMN	O4R-C4R-C5R-O5R
2	A	501	NMN	C5R-O5R-P-O1P

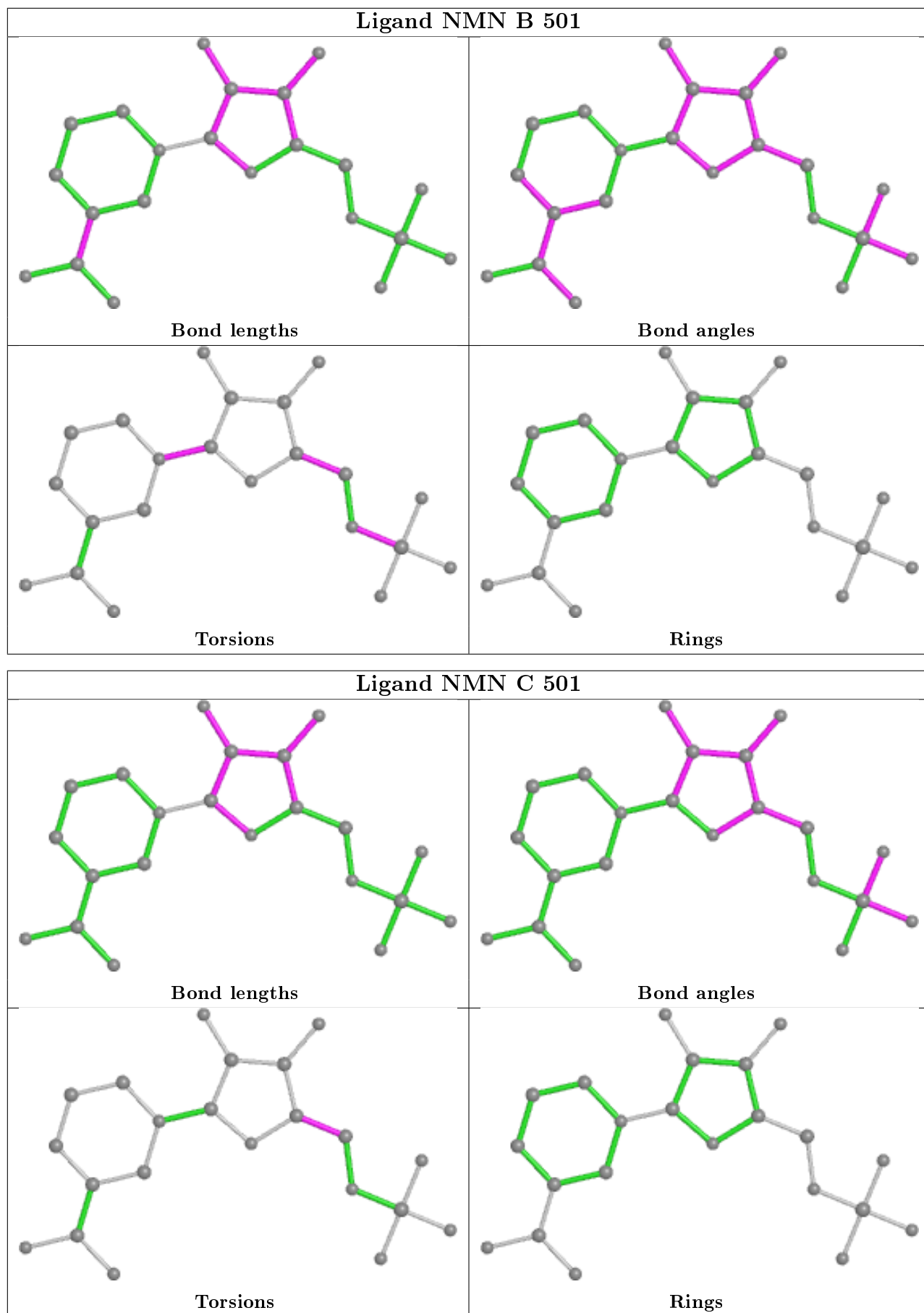
There are no ring outliers.

3 monomers are involved in 9 short contacts:

Mol	Chain	Res	Type	Clashes	Symm-Clashes
2	A	501	NMN	2	0
2	B	501	NMN	3	0
2	C	501	NMN	4	0

The following is a two-dimensional graphical depiction of Mogul quality analysis of bond lengths, bond angles, torsion angles, and ring geometry for all instances of the Ligand of Interest. In addition, ligands with molecular weight > 250 and outliers as shown on the validation Tables will also be included. For torsion angles, if less than 5% of the Mogul distribution of torsion angles is within 10 degrees of the torsion angle in question, then that torsion angle is considered an outlier. Any bond that is central to one or more torsion angles identified as an outlier by Mogul will be highlighted in the graph. For rings, the root-mean-square deviation (RMSD) between the ring in question and similar rings identified by Mogul is calculated over all ring torsion angles. If the average RMSD is greater than 60 degrees and the minimal RMSD between the ring in question and any Mogul-identified rings is also greater than 60 degrees, then that ring is considered an outlier. The outliers are highlighted in purple. The color gray indicates Mogul did not find sufficient equivalents in the CSD to analyse the geometry.





5.7 Other polymers [i](#)

There are no such residues in this entry.

5.8 Polymer linkage issues [i](#)

There are no chain breaks in this entry.

6 Fit of model and data

6.1 Protein, DNA and RNA chains

EDS was not executed - this section is therefore empty.

6.2 Non-standard residues in protein, DNA, RNA chains

EDS was not executed - this section is therefore empty.

6.3 Carbohydrates

EDS was not executed - this section is therefore empty.

6.4 Ligands

EDS was not executed - this section is therefore empty.

6.5 Other polymers

EDS was not executed - this section is therefore empty.