



# Full wwPDB X-ray Structure Validation Report ⓘ

Feb 12, 2024 – 04:02 AM EST

PDB ID : 3GVL  
Title : Crystal Structure of endo-neuraminidaseNF  
Authors : Schulz, E.C.; Dickmanns, A.; Ficner, R.  
Deposited on : 2009-03-31  
Resolution : 1.41 Å(reported)

This is a Full wwPDB X-ray Structure Validation Report for a publicly released PDB entry.

We welcome your comments at [validation@mail.wwpdb.org](mailto:validation@mail.wwpdb.org)

A user guide is available at

<https://www.wwpdb.org/validation/2017/XrayValidationReportHelp>

with specific help available everywhere you see the ⓘ symbol.

The types of validation reports are described at

<http://www.wwpdb.org/validation/2017/FAQs#types>.

---

The following versions of software and data (see [references ⓘ](#)) were used in the production of this report:

MolProbity : 4.02b-467  
Mogul : 1.8.5 (274361), CSD as541be (2020)  
Xtriage (Phenix) : 1.13  
EDS : 2.36  
buster-report : 1.1.7 (2018)  
Percentile statistics : 20191225.v01 (using entries in the PDB archive December 25th 2019)  
Refmac : 5.8.0158  
CCP4 : 7.0.044 (Gargrove)  
Ideal geometry (proteins) : Engh & Huber (2001)  
Ideal geometry (DNA, RNA) : Parkinson et al. (1996)  
Validation Pipeline (wwPDB-VP) : 2.36

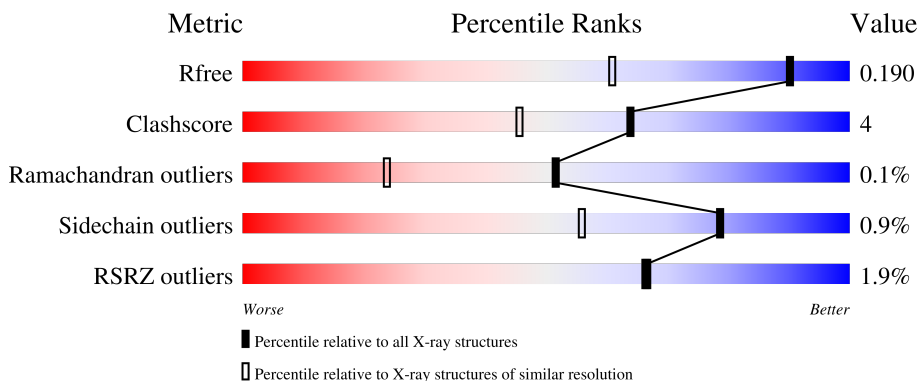
# 1 Overall quality at a glance

The following experimental techniques were used to determine the structure:

*X-RAY DIFFRACTION*

The reported resolution of this entry is 1.41 Å.

Percentile scores (ranging between 0-100) for global validation metrics of the entry are shown in the following graphic. The table shows the number of entries on which the scores are based.



Metric	Whole archive (#Entries)	Similar resolution (#Entries, resolution range(Å))
$R_{free}$	130704	2579 (1.44-1.40)
Clashscore	141614	2696 (1.44-1.40)
Ramachandran outliers	138981	2632 (1.44-1.40)
Sidechain outliers	138945	2631 (1.44-1.40)
RSRZ outliers	127900	2528 (1.44-1.40)

The table below summarises the geometric issues observed across the polymeric chains and their fit to the electron density. The red, orange, yellow and green segments of the lower bar indicate the fraction of residues that contain outliers for  $\geq 3$ , 2, 1 and 0 types of geometric quality criteria respectively. A grey segment represents the fraction of residues that are not modelled. The numeric value for each fraction is indicated below the corresponding segment, with a dot representing fractions  $\leq 5\%$ . The upper red bar (where present) indicates the fraction of residues that have poor fit to the electron density. The numeric value is given above the bar.

Mol	Chain	Length	Quality of chain
1	A	670	
2	B	2	

## 2 Entry composition [i](#)

There are 4 unique types of molecules in this entry. The entry contains 6970 atoms, of which 0 are hydrogens and 0 are deuteriums.

In the tables below, the ZeroOcc column contains the number of atoms modelled with zero occupancy, the AltConf column contains the number of residues with at least one atom in alternate conformation and the Trace column contains the number of residues modelled with at most 2 atoms.

- Molecule 1 is a protein called Endo-N-acetylneuraminidase.

Mol	Chain	Residues	Atoms					ZeroOcc	AltConf	Trace
			Total	C	N	O	S			
1	A	670	5507	3496	937	1050	24	7	50	0

There are 5 discrepancies between the modelled and reference sequences:

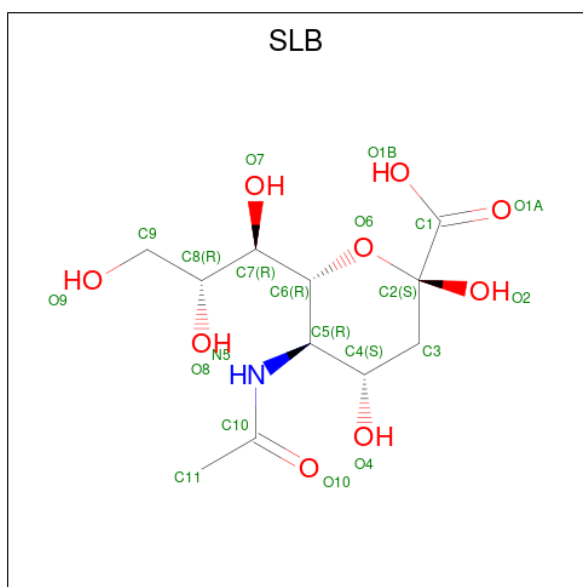
Chain	Residue	Modelled	Actual	Comment	Reference
A	241	VAL	-	expression tag	UNP Q858B1
A	242	PRO	-	expression tag	UNP Q858B1
A	243	ARG	-	expression tag	UNP Q858B1
A	244	GLY	-	expression tag	UNP Q858B1
A	245	SER	-	expression tag	UNP Q858B1

- Molecule 2 is an oligosaccharide called N-acetyl-alpha-neuraminic acid-(2-8)-N-acetyl-beta-neuraminic acid.



Mol	Chain	Residues	Atoms				ZeroOcc	AltConf	Trace
			Total	C	N	O			
2	B	2	41	22	2	17	0	0	0

- Molecule 3 is N-acetyl-beta-neuraminic acid (three-letter code: SLB) (formula: C<sub>11</sub>H<sub>19</sub>NO<sub>9</sub>).



Mol	Chain	Residues	Atoms				ZeroOcc	AltConf
			Total	C	N	O		
3	A	1	21	11	1	9	0	0

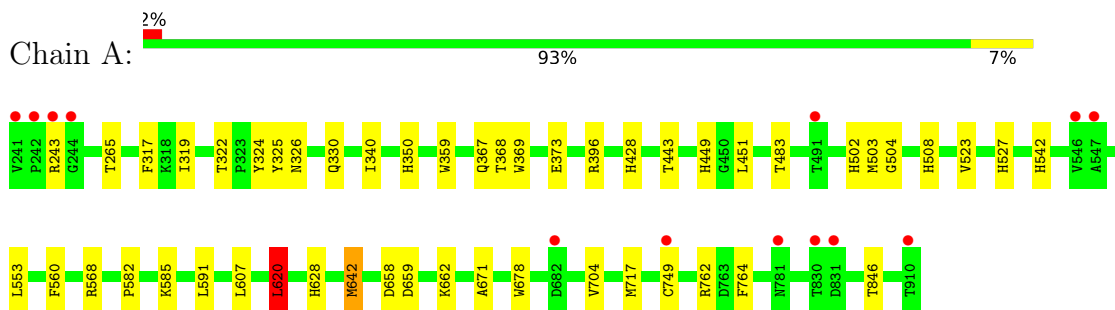
- Molecule 4 is water.

Mol	Chain	Residues	Atoms		ZeroOcc	AltConf
			Total	O		
4	A	1401	1401	1401	0	0

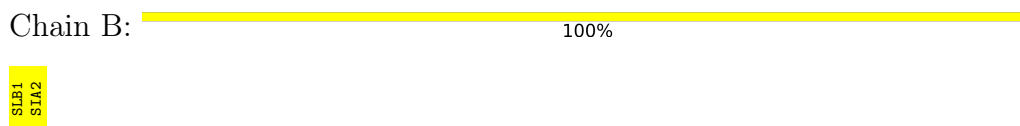
### 3 Residue-property plots [i](#)

These plots are drawn for all protein, RNA, DNA and oligosaccharide chains in the entry. The first graphic for a chain summarises the proportions of the various outlier classes displayed in the second graphic. The second graphic shows the sequence view annotated by issues in geometry and electron density. Residues are color-coded according to the number of geometric quality criteria for which they contain at least one outlier: green = 0, yellow = 1, orange = 2 and red = 3 or more. A red dot above a residue indicates a poor fit to the electron density ( $RSRZ > 2$ ). Stretches of 2 or more consecutive residues without any outlier are shown as a green connector. Residues present in the sample, but not in the model, are shown in grey.

- Molecule 1: Endo-N-acetylneuraminidase



- Molecule 2: N-acetyl-alpha-neuraminic acid-(2-8)-N-acetyl-beta-neuraminic acid



## 4 Data and refinement statistics

Property	Value	Source
Space group	H 3	Depositor
Cell constants a, b, c, $\alpha$ , $\beta$ , $\gamma$	119.09Å 119.09Å 175.98Å 90.00° 90.00° 120.00°	Depositor
Resolution (Å)	19.64 – 1.41 19.64 – 1.41	Depositor EDS
% Data completeness (in resolution range)	100.0 (19.64-1.41) 99.8 (19.64-1.41)	Depositor EDS
$R_{merge}$	0.07	Depositor
$R_{sym}$	(Not available)	Depositor
$\langle I/\sigma(I) \rangle$ <sup>1</sup>	2.16 (at 1.41Å)	Xtrriage
Refinement program	REFMAC 5.5.0039	Depositor
R, $R_{free}$	0.169 , 0.188 0.171 , 0.190	Depositor DCC
$R_{free}$ test set	8949 reflections (5.00%)	wwPDB-VP
Wilson B-factor (Å <sup>2</sup> )	9.7	Xtrriage
Anisotropy	0.031	Xtrriage
Bulk solvent $k_{sol}$ (e/Å <sup>3</sup> ), $B_{sol}$ (Å <sup>2</sup> )	0.32 , 59.5	EDS
L-test for twinning <sup>2</sup>	$\langle  L  \rangle = 0.48$ , $\langle L^2 \rangle = 0.31$	Xtrriage
Estimated twinning fraction	0.023 for h,-h-k,-l	Xtrriage
$F_o, F_c$ correlation	0.97	EDS
Total number of atoms	6970	wwPDB-VP
Average B, all atoms (Å <sup>2</sup> )	20.0	wwPDB-VP

Xtrriage's analysis on translational NCS is as follows: *The largest off-origin peak in the Patterson function is 3.15% of the height of the origin peak. No significant pseudotranslation is detected.*

<sup>1</sup>Intensities estimated from amplitudes.

<sup>2</sup>Theoretical values of  $\langle |L| \rangle$ ,  $\langle L^2 \rangle$  for acentric reflections are 0.5, 0.333 respectively for untwinned datasets, and 0.375, 0.2 for perfectly twinned datasets.

## 5 Model quality [i](#)

### 5.1 Standard geometry [i](#)

Bond lengths and bond angles in the following residue types are not validated in this section: SLB, SIA

The Z score for a bond length (or angle) is the number of standard deviations the observed value is removed from the expected value. A bond length (or angle) with  $|Z| > 5$  is considered an outlier worth inspection. RMSZ is the root-mean-square of all Z scores of the bond lengths (or angles).

Mol	Chain	Bond lengths		Bond angles	
		RMSZ	# Z  >5	RMSZ	# Z  >5
1	A	0.42	0/5809	0.62	3/7908 (0.0%)

Chiral center outliers are detected by calculating the chiral volume of a chiral center and verifying if the center is modelled as a planar moiety or with the opposite hand. A planarity outlier is detected by checking planarity of atoms in a peptide group, atoms in a mainchain group or atoms of a sidechain that are expected to be planar.

Mol	Chain	#Chirality outliers	#Planarity outliers
1	A	0	1

There are no bond length outliers.

All (3) bond angle outliers are listed below:

Mol	Chain	Res	Type	Atoms	Z	Observed( $^{\circ}$ )	Ideal( $^{\circ}$ )
1	A	504	GLY	N-CA-C	7.44	131.69	113.10
1	A	620[A]	LEU	CA-CB-CG	5.91	128.89	115.30
1	A	620[B]	LEU	CA-CB-CG	5.91	128.89	115.30

There are no chirality outliers.

All (1) planarity outliers are listed below:

Mol	Chain	Res	Type	Group
1	A	503	MET	Peptide

### 5.2 Too-close contacts [i](#)

In the following table, the Non-H and H(model) columns list the number of non-hydrogen atoms and hydrogen atoms in the chain respectively. The H(added) column lists the number of hydrogen atoms added and optimized by MolProbity. The Clashes column lists the number of clashes within

the asymmetric unit, whereas Symm-Clashes lists symmetry-related clashes.

Mol	Chain	Non-H	H(model)	H(added)	Clashes	Symm-Clashes
1	A	5507	0	5373	46	0
2	B	41	0	34	0	0
3	A	21	0	18	1	0
4	A	1401	0	0	13	0
All	All	6970	0	5425	46	0

The all-atom clashscore is defined as the number of clashes found per 1000 atoms (including hydrogen atoms). The all-atom clashscore for this structure is 4.

All (46) close contacts within the same asymmetric unit are listed below, sorted by their clash magnitude.

Atom-1	Atom-2	Interatomic distance (Å)	Clash overlap (Å)
1:A:523:VAL:HG23	4:A:1388:HOH:O	1.60	1.00
1:A:449:HIS:HD2	1:A:451:LEU:H	1.16	0.90
1:A:319:ILE:HD13	1:A:749[C]:CYS:SG	2.15	0.87
1:A:367:GLN:HE22	1:A:764:PHE:H	1.31	0.78
1:A:443[A]:THR:HG21	4:A:2020:HOH:O	1.84	0.77
1:A:325:TYR:OH	1:A:350[A]:HIS:HE1	1.69	0.75
1:A:523:VAL:CG2	4:A:1388:HOH:O	2.25	0.73
1:A:322:THR:HG21	4:A:1314:HOH:O	1.89	0.71
1:A:325:TYR:OH	1:A:350[A]:HIS:CE1	2.43	0.71
1:A:322:THR:HB	1:A:326:ASN:HD21	1.56	0.69
1:A:449:HIS:CD2	1:A:451:LEU:H	2.06	0.69
1:A:322:THR:HB	1:A:326:ASN:ND2	2.13	0.64
1:A:443[A]:THR:HG22	1:A:483:THR:HG22	1.79	0.64
1:A:330:GLN:HB2	1:A:527:HIS:HE1	1.66	0.59
1:A:428:HIS:ND1	1:A:502:HIS:HD2	2.00	0.59
1:A:568[A]:ARG:NH2	4:A:1388:HOH:O	2.35	0.57
1:A:368[A]:THR:CG2	4:A:1350:HOH:O	2.53	0.56
1:A:527:HIS:HD2	1:A:582:PRO:O	1.90	0.55
1:A:322:THR:HG22	1:A:324:TYR:H	1.73	0.54
1:A:373:GLU:OE2	1:A:508[A]:HIS:HE1	1.89	0.54
1:A:628:HIS:HE1	1:A:658:ASP:OD1	1.91	0.54
1:A:542:HIS:HE1	4:A:122:HOH:O	1.92	0.53
1:A:322:THR:CG2	1:A:326:ASN:HD21	2.22	0.52
1:A:330:GLN:HB2	1:A:527:HIS:CE1	2.45	0.51
1:A:330:GLN:HE21	1:A:527:HIS:CE1	2.29	0.51
1:A:553:LEU:CD2	1:A:591[A]:LEU:HD21	2.41	0.50
1:A:368[A]:THR:HG22	4:A:1350:HOH:O	2.12	0.50
1:A:330:GLN:HE21	1:A:527:HIS:HE1	1.58	0.49

*Continued on next page...*



Continued from previous page...

Atom-1	Atom-2	Interatomic distance (Å)	Clash overlap (Å)
1:A:322:THR:CB	1:A:326:ASN:HD21	2.26	0.49
1:A:607:LEU:HB3	1:A:620[A]:LEU:HD22	1.95	0.48
1:A:542:HIS:HD2	4:A:5:HOH:O	1.96	0.48
1:A:319:ILE:HG21	1:A:749[B]:CYS:SG	2.54	0.48
1:A:396:ARG:HB3	1:A:560:PHE:CZ	2.49	0.47
1:A:553:LEU:HD22	1:A:591[A]:LEU:HD21	1.95	0.47
1:A:659[A]:ASP:OD1	1:A:662[A]:LYS:HE2	2.14	0.47
1:A:340:ILE:HG21	1:A:717[A]:MET:HE2	1.98	0.46
1:A:265[A]:THR:HG21	4:A:1885:HOH:O	2.15	0.46
1:A:317:PHE:HB2	1:A:749[B]:CYS:SG	2.55	0.45
1:A:642[B]:MET:HE3	1:A:671:ALA:HB3	2.00	0.44
1:A:369:TRP:HH2	1:A:717[A]:MET:HE2	1.83	0.43
1:A:568[A]:ARG:NH1	4:A:1388:HOH:O	2.51	0.43
1:A:243:ARG:HD2	4:A:1669:HOH:O	2.18	0.43
1:A:620[B]:LEU:HG	1:A:678:TRP:NE1	2.33	0.42
1:A:846:THR:O	3:A:911:SLB:H4	2.20	0.42
1:A:443[A]:THR:HG23	4:A:1857:HOH:O	2.19	0.42
1:A:449:HIS:HD2	1:A:451:LEU:N	2.00	0.40

There are no symmetry-related clashes.

## 5.3 Torsion angles [i](#)

### 5.3.1 Protein backbone [i](#)

In the following table, the Percentiles column shows the percent Ramachandran outliers of the chain as a percentile score with respect to all X-ray entries followed by that with respect to entries of similar resolution.

The Analysed column shows the number of residues for which the backbone conformation was analysed, and the total number of residues.

Mol	Chain	Analysed	Favoured	Allowed	Outliers	Percentiles
1	A	719/670 (107%)	691 (96%)	27 (4%)	1 (0%)	51 24

All (1) Ramachandran outliers are listed below:

Mol	Chain	Res	Type
1	A	704	VAL

### 5.3.2 Protein sidechains [i](#)

In the following table, the Percentiles column shows the percent sidechain outliers of the chain as a percentile score with respect to all X-ray entries followed by that with respect to entries of similar resolution.

The Analysed column shows the number of residues for which the sidechain conformation was analysed, and the total number of residues.

Mol	Chain	Analysed	Rotameric	Outliers	Percentiles
1	A	619/567 (109%)	611 (99%)	8 (1%)	69 41

All (8) residues with a non-rotameric sidechain are listed below:

Mol	Chain	Res	Type
1	A	359	TRP
1	A	585[A]	LYS
1	A	585[B]	LYS
1	A	620[A]	LEU
1	A	620[B]	LEU
1	A	642[A]	MET
1	A	642[B]	MET
1	A	762	ARG

Sometimes sidechains can be flipped to improve hydrogen bonding and reduce clashes. All (19) such sidechains are listed below:

Mol	Chain	Res	Type
1	A	263	ASN
1	A	326	ASN
1	A	338	ASN
1	A	367	GLN
1	A	397	ASN
1	A	445	HIS
1	A	449	HIS
1	A	461	ASN
1	A	481	ASN
1	A	502	HIS
1	A	527	HIS
1	A	542	HIS
1	A	570	GLN
1	A	625	ASN
1	A	628	HIS
1	A	650	ASN
1	A	676	ASN

*Continued on next page...*

*Continued from previous page...*

Mol	Chain	Res	Type
1	A	832	ASN
1	A	853	GLN

### 5.3.3 RNA [i](#)

There are no RNA molecules in this entry.

### 5.4 Non-standard residues in protein, DNA, RNA chains [i](#)

There are no non-standard protein/DNA/RNA residues in this entry.

### 5.5 Carbohydrates [i](#)

2 monosaccharides are modelled in this entry.

In the following table, the Counts columns list the number of bonds (or angles) for which Mogul statistics could be retrieved, the number of bonds (or angles) that are observed in the model and the number of bonds (or angles) that are defined in the Chemical Component Dictionary. The Link column lists molecule types, if any, to which the group is linked. The Z score for a bond length (or angle) is the number of standard deviations the observed value is removed from the expected value. A bond length (or angle) with  $|Z| > 2$  is considered an outlier worth inspection. RMSZ is the root-mean-square of all Z scores of the bond lengths (or angles).

Mol	Type	Chain	Res	Link	Bond lengths			Bond angles		
					Counts	RMSZ	# Z  > 2	Counts	RMSZ	# Z  > 2
2	SLB	B	1	2	21,21,21	0.98	2 (9%)	25,31,31	4.36	6 (24%)
2	SIA	B	2	2	20,20,21	0.57	0	24,28,31	1.39	3 (12%)

In the following table, the Chirals column lists the number of chiral outliers, the number of chiral centers analysed, the number of these observed in the model and the number defined in the Chemical Component Dictionary. Similar counts are reported in the Torsion and Rings columns. '-' means no outliers of that kind were identified.

Mol	Type	Chain	Res	Link	Chirals	Torsions	Rings
2	SLB	B	1	2	-	3/20/38/38	0/1/1/1
2	SIA	B	2	2	-	2/18/34/38	0/1/1/1

All (2) bond length outliers are listed below:

Mol	Chain	Res	Type	Atoms	Z	Observed(Å)	Ideal(Å)
2	B	1	SLB	O2-C2	3.03	1.43	1.39
2	B	1	SLB	C3-C2	2.03	1.54	1.51

All (9) bond angle outliers are listed below:

Mol	Chain	Res	Type	Atoms	Z	Observed(°)	Ideal(°)
2	B	1	SLB	O2-C2-C3	-13.84	89.40	109.40
2	B	1	SLB	O2-C2-C1	-12.85	84.64	110.76
2	B	1	SLB	O2-C2-O6	-8.26	88.45	109.42
2	B	2	SIA	C6-C5-N5	-4.28	103.81	110.91
2	B	1	SLB	O1A-C1-C2	-4.04	117.47	123.59
2	B	1	SLB	C3-C2-C1	4.00	120.46	113.00
2	B	2	SIA	C6-O6-C2	3.02	117.81	111.34
2	B	1	SLB	O6-C6-C5	2.72	112.43	109.78
2	B	2	SIA	O6-C2-C1	2.18	111.98	107.70

There are no chirality outliers.

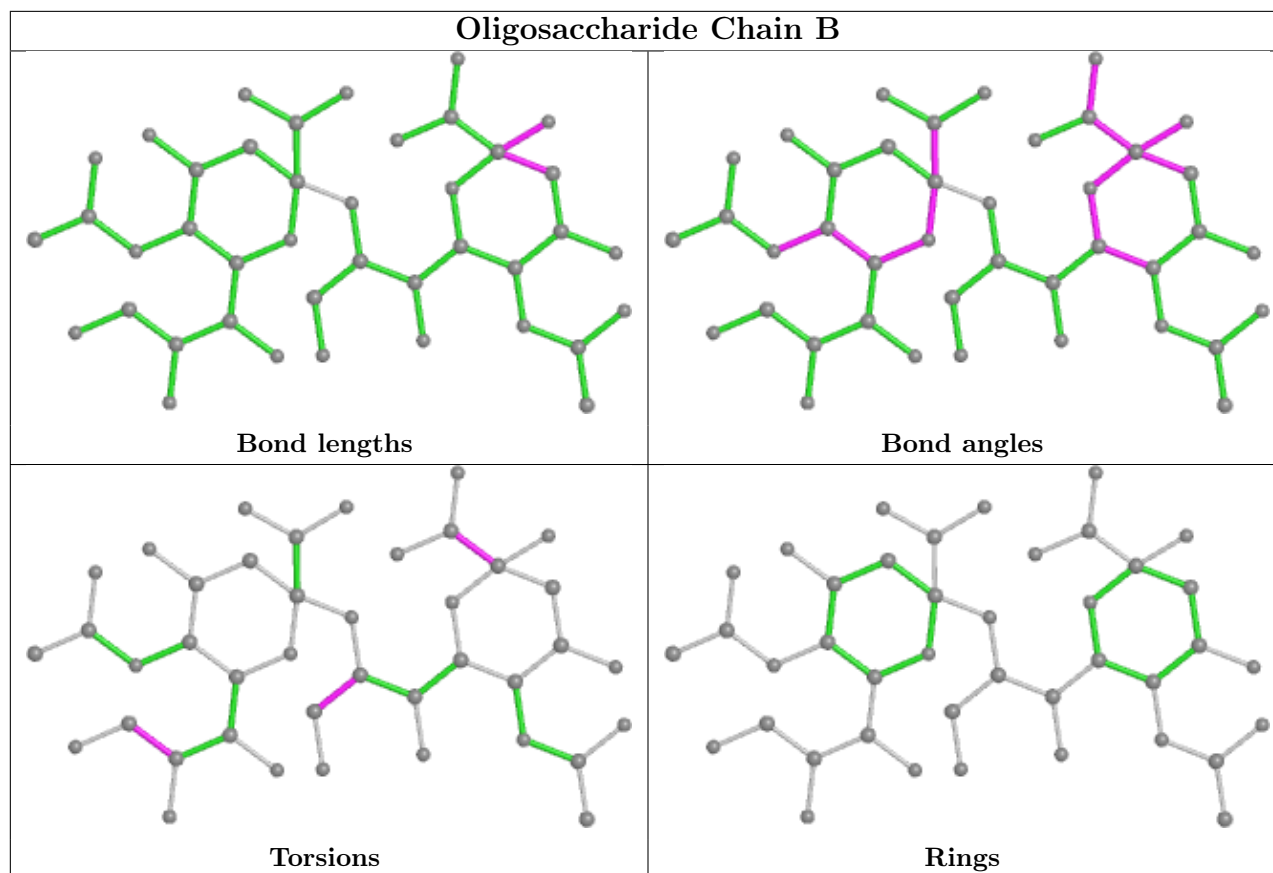
All (5) torsion outliers are listed below:

Mol	Chain	Res	Type	Atoms
2	B	1	SLB	O1B-C1-C2-O6
2	B	1	SLB	C7-C8-C9-O9
2	B	2	SIA	C7-C8-C9-O9
2	B	2	SIA	O8-C8-C9-O9
2	B	1	SLB	O8-C8-C9-O9

There are no ring outliers.

No monomer is involved in short contacts.

The following is a two-dimensional graphical depiction of Mogul quality analysis of bond lengths, bond angles, torsion angles, and ring geometry for oligosaccharide.



## 5.6 Ligand geometry [i](#)

1 ligand is modelled in this entry.

In the following table, the Counts columns list the number of bonds (or angles) for which Mogul statistics could be retrieved, the number of bonds (or angles) that are observed in the model and the number of bonds (or angles) that are defined in the Chemical Component Dictionary. The Link column lists molecule types, if any, to which the group is linked. The Z score for a bond length (or angle) is the number of standard deviations the observed value is removed from the expected value. A bond length (or angle) with  $|Z| > 2$  is considered an outlier worth inspection. RMSZ is the root-mean-square of all Z scores of the bond lengths (or angles).

Mol	Type	Chain	Res	Link	Bond lengths			Bond angles		
					Counts	RMSZ	# $ Z  > 2$	Counts	RMSZ	# $ Z  > 2$
3	SLB	A	911	-	21,21,21	1.28	1 (4%)	25,31,31	4.34	8 (32%)

In the following table, the Chirals column lists the number of chiral outliers, the number of chiral centers analysed, the number of these observed in the model and the number defined in the Chemical Component Dictionary. Similar counts are reported in the Torsion and Rings columns. '-' means no outliers of that kind were identified.

Mol	Type	Chain	Res	Link	Chirals	Torsions	Rings
3	SLB	A	911	-	-	3/20/38/38	0/1/1/1

All (1) bond length outliers are listed below:

Mol	Chain	Res	Type	Atoms	Z	Observed(Å)	Ideal(Å)
3	A	911	SLB	O2-C2	5.23	1.46	1.39

All (8) bond angle outliers are listed below:

Mol	Chain	Res	Type	Atoms	Z	Observed(°)	Ideal(°)
3	A	911	SLB	O2-C2-C3	-15.44	87.08	109.40
3	A	911	SLB	O2-C2-C1	-8.90	92.67	110.76
3	A	911	SLB	O2-C2-O6	-7.86	89.45	109.42
3	A	911	SLB	O1A-C1-C2	-5.77	114.85	123.59
3	A	911	SLB	C3-C2-C1	4.43	121.28	113.00
3	A	911	SLB	O6-C6-C5	3.83	113.52	109.78
3	A	911	SLB	C3-C4-C5	3.07	114.69	109.98
3	A	911	SLB	C6-C5-N5	-2.23	107.22	110.91

There are no chirality outliers.

All (3) torsion outliers are listed below:

Mol	Chain	Res	Type	Atoms
3	A	911	SLB	O1B-C1-C2-O2
3	A	911	SLB	O1B-C1-C2-O6
3	A	911	SLB	O1A-C1-C2-O6

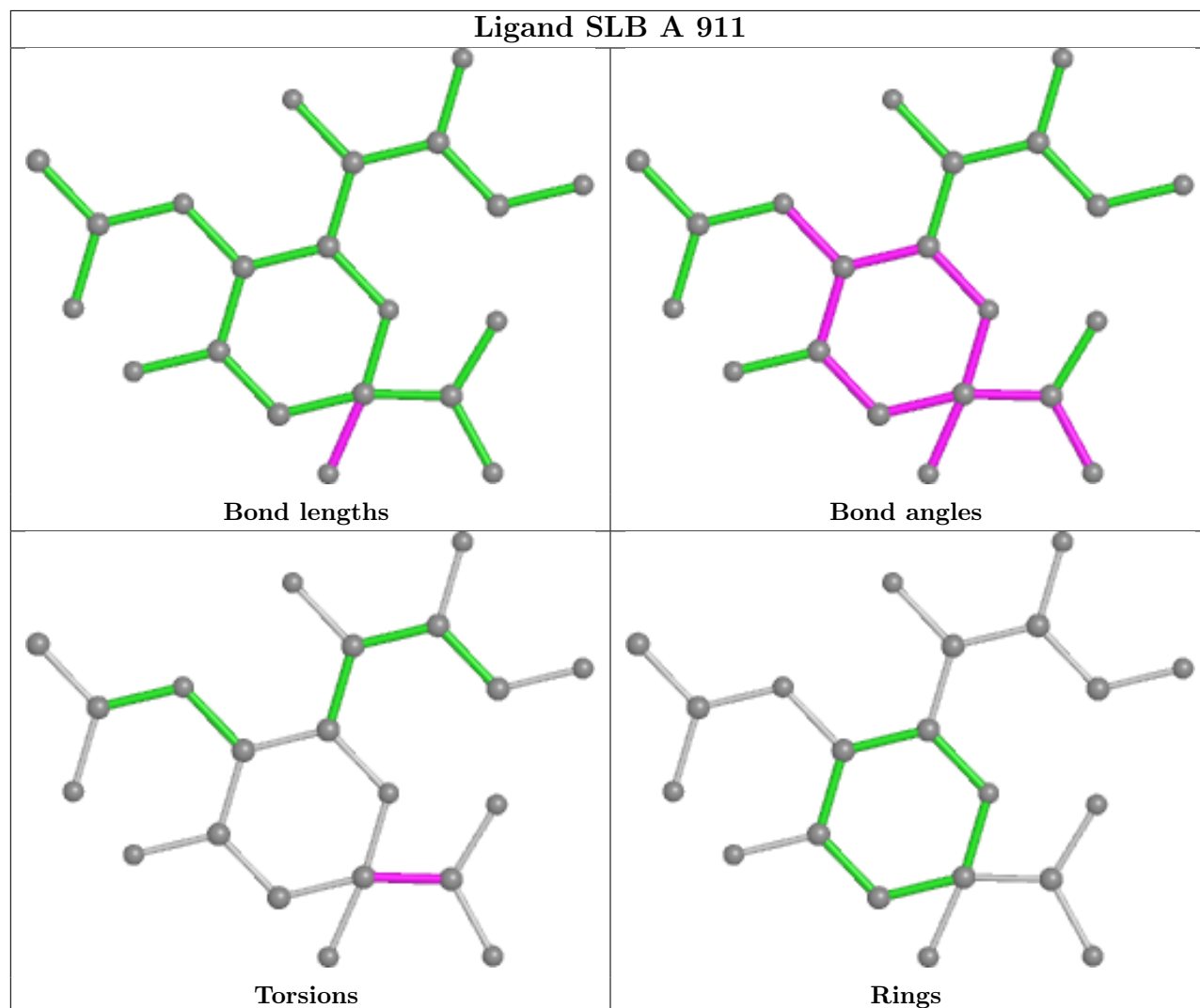
There are no ring outliers.

1 monomer is involved in 1 short contact:

Mol	Chain	Res	Type	Clashes	Symm-Clashes
3	A	911	SLB	1	0

The following is a two-dimensional graphical depiction of Mogul quality analysis of bond lengths, bond angles, torsion angles, and ring geometry for all instances of the Ligand of Interest. In addition, ligands with molecular weight > 250 and outliers as shown on the validation Tables will also be included. For torsion angles, if less than 5% of the Mogul distribution of torsion angles is within 10 degrees of the torsion angle in question, then that torsion angle is considered an outlier. Any bond that is central to one or more torsion angles identified as an outlier by Mogul will be highlighted in the graph. For rings, the root-mean-square deviation (RMSD) between the ring in question and similar rings identified by Mogul is calculated over all ring torsion angles. If the average RMSD is greater than 60 degrees and the minimal RMSD between the ring in question and

any Mogul-identified rings is also greater than 60 degrees, then that ring is considered an outlier. The outliers are highlighted in purple. The color gray indicates Mogul did not find sufficient equivalents in the CSD to analyse the geometry.



## 5.7 Other polymers [i](#)

There are no such residues in this entry.

## 5.8 Polymer linkage issues [i](#)

There are no chain breaks in this entry.

## 6 Fit of model and data [i](#)

### 6.1 Protein, DNA and RNA chains [i](#)

In the following table, the column labelled ‘#RSRZ> 2’ contains the number (and percentage) of RSRZ outliers, followed by percent RSRZ outliers for the chain as percentile scores relative to all X-ray entries and entries of similar resolution. The OWAB column contains the minimum, median, 95<sup>th</sup> percentile and maximum values of the occupancy-weighted average B-factor per residue. The column labelled ‘Q< 0.9’ lists the number of (and percentage) of residues with an average occupancy less than 0.9.

Mol	Chain	Analysed	<RSRZ>	#RSRZ>2	OWAB(Å <sup>2</sup> )	Q<0.9
1	A	670/670 (100%)	-0.03	13 (1%) 66 66	9, 14, 22, 33	1 (0%)

All (13) RSRZ outliers are listed below:

Mol	Chain	Res	Type	RSRZ
1	A	749[A]	CYS	5.7
1	A	243	ARG	4.6
1	A	910[A]	THR	4.0
1	A	547	ALA	3.5
1	A	241	VAL	3.4
1	A	546	VAL	3.2
1	A	830[A]	THR	2.6
1	A	831	ASP	2.5
1	A	682[A]	ASP	2.3
1	A	242	PRO	2.1
1	A	491	THR	2.1
1	A	781[A]	ASN	2.1
1	A	244	GLY	2.0

### 6.2 Non-standard residues in protein, DNA, RNA chains [i](#)

There are no non-standard protein/DNA/RNA residues in this entry.

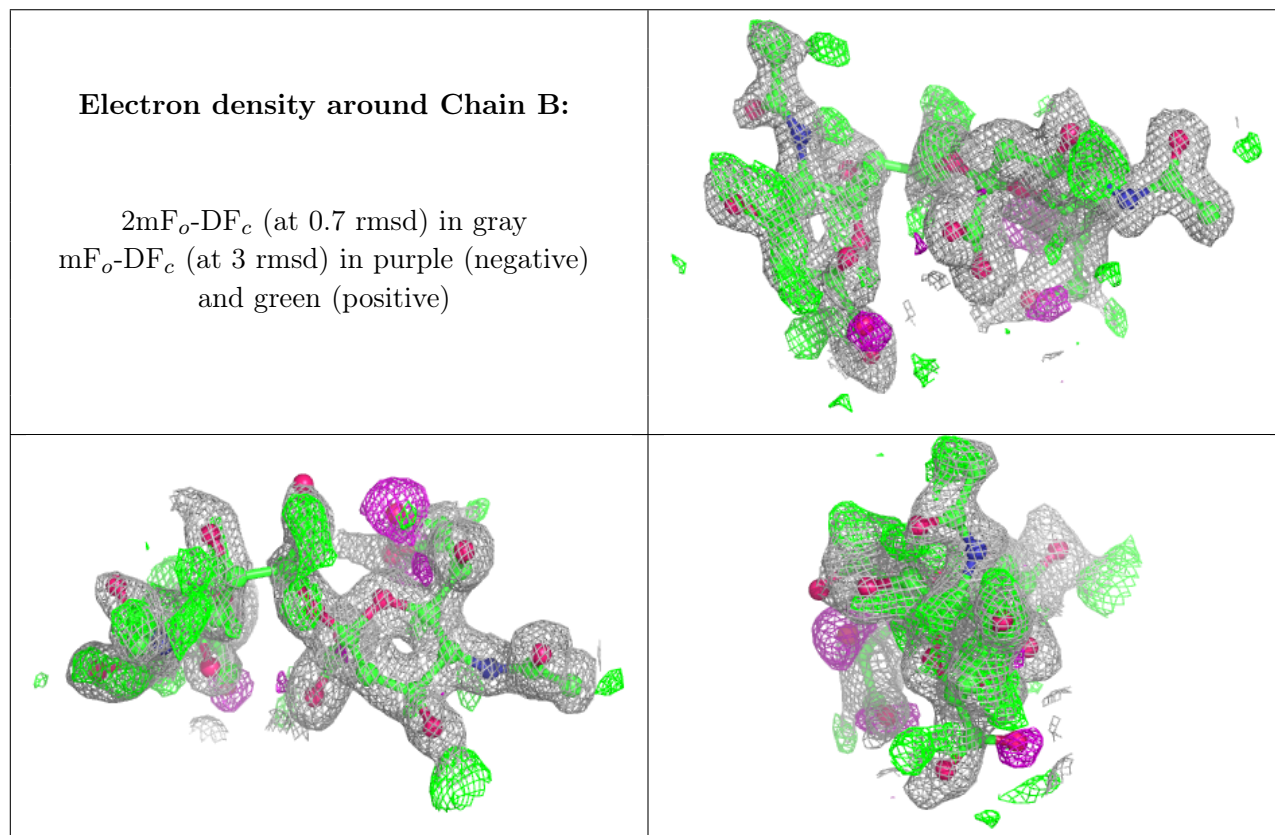
### 6.3 Carbohydrates [i](#)

In the following table, the Atoms column lists the number of modelled atoms in the group and the number defined in the chemical component dictionary. The B-factors column lists the minimum, median, 95<sup>th</sup> percentile and maximum values of B factors of atoms in the group. The column labelled ‘Q< 0.9’ lists the number of atoms with occupancy less than 0.9.



Mol	Type	Chain	Res	Atoms	RSCC	RSR	B-factors( $\text{\AA}^2$ )	Q<0.9
2	SLB	B	1	21/21	0.64	0.28	19,21,22,24	21
2	SIA	B	2	20/21	0.86	0.21	24,28,36,36	0

The following is a graphical depiction of the model fit to experimental electron density for oligosaccharide. Each fit is shown from different orientation to approximate a three-dimensional view.



## 6.4 Ligands [\(i\)](#)

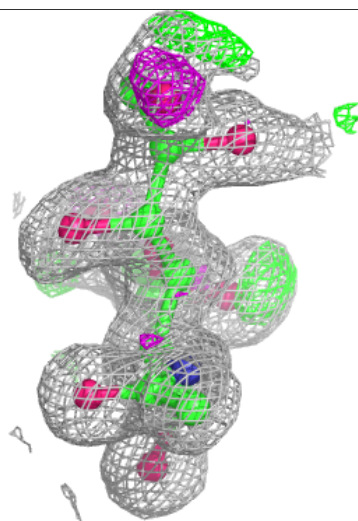
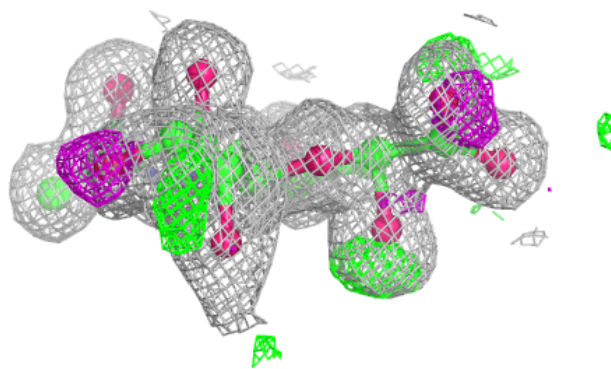
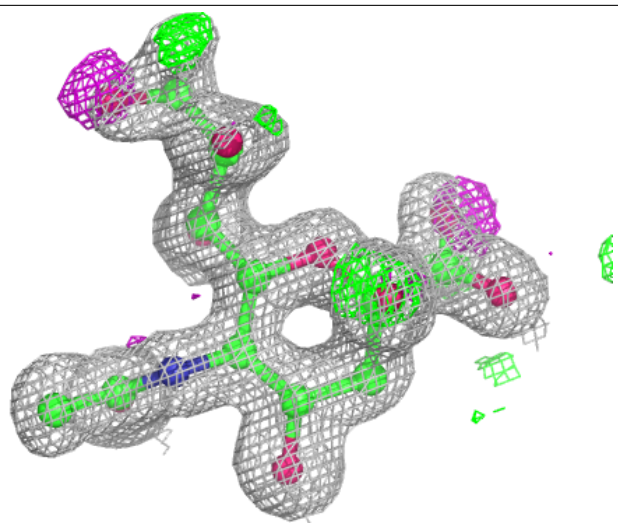
In the following table, the Atoms column lists the number of modelled atoms in the group and the number defined in the chemical component dictionary. The B-factors column lists the minimum, median, 95<sup>th</sup> percentile and maximum values of B factors of atoms in the group. The column labelled 'Q< 0.9' lists the number of atoms with occupancy less than 0.9.

Mol	Type	Chain	Res	Atoms	RSCC	RSR	B-factors( $\text{\AA}^2$ )	Q<0.9
3	SLB	A	911	21/21	0.88	0.16	15,22,30,33	0

The following is a graphical depiction of the model fit to experimental electron density of all instances of the Ligand of Interest. In addition, ligands with molecular weight > 250 and outliers as shown on the geometry validation Tables will also be included. Each fit is shown from different orientation to approximate a three-dimensional view.

**Electron density around SLB A 911:**

$2mF_o-DF_c$  (at 0.7 rmsd) in gray  
 $mF_o-DF_c$  (at 3 rmsd) in purple (negative)  
and green (positive)



## 6.5 Other polymers [i](#)

There are no such residues in this entry.