



Full wwPDB X-ray Structure Validation Report ⓘ

May 14, 2020 – 11:12 am BST

PDB ID : 4GUU
Title : Crystal structure of LSD2-NPAC with tranylcypromine
Authors : Chen, F.; Dong, Z.; Fang, J.; Yang, Y.; Li, Z.; Xu, Y.; Yang, H.; Wang, P.;
Xu, Y.
Deposited on : 2012-08-29
Resolution : 2.30 Å(reported)

This is a Full wwPDB X-ray Structure Validation Report for a publicly released PDB entry.

We welcome your comments at validation@mail.wwpdb.org

A user guide is available at

<https://www.wwpdb.org/validation/2017/XrayValidationReportHelp>

with specific help available everywhere you see the ⓘ symbol.

The following versions of software and data (see [references ⓘ](#)) were used in the production of this report:

MolProbity : 4.02b-467
Mogul : 1.8.5 (274361), CSD as541be (2020)
Xtriage (Phenix) : 1.13
EDS : 2.11
buster-report : 1.1.7 (2018)
Percentile statistics : 20191225.v01 (using entries in the PDB archive December 25th 2019)
Refmac : 5.8.0158
CCP4 : 7.0.044 (Gargrove)
Ideal geometry (proteins) : Engh & Huber (2001)
Ideal geometry (DNA, RNA) : Parkinson et al. (1996)
Validation Pipeline (wwPDB-VP) : 2.11

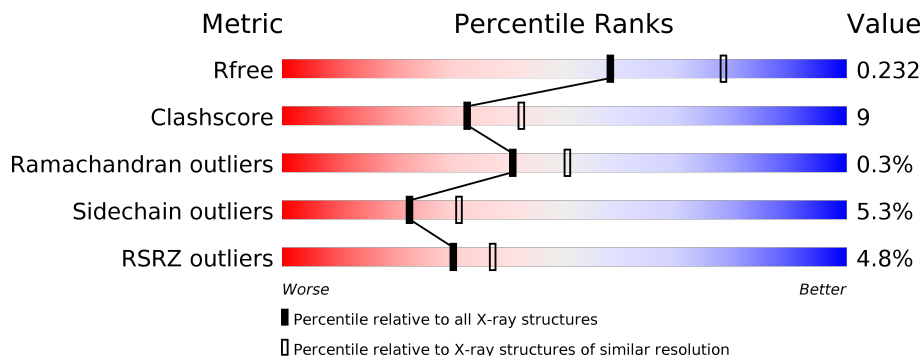
1 Overall quality at a glance

The following experimental techniques were used to determine the structure:

X-RAY DIFFRACTION

The reported resolution of this entry is 2.30 Å.

Percentile scores (ranging between 0-100) for global validation metrics of the entry are shown in the following graphic. The table shows the number of entries on which the scores are based.



Metric	Whole archive (#Entries)	Similar resolution (#Entries, resolution range(Å))
R_{free}	130704	5042 (2.30-2.30)
Clashscore	141614	5643 (2.30-2.30)
Ramachandran outliers	138981	5575 (2.30-2.30)
Sidechain outliers	138945	5575 (2.30-2.30)
RSRZ outliers	127900	4938 (2.30-2.30)

The table below summarises the geometric issues observed across the polymeric chains and their fit to the electron density. The red, orange, yellow and green segments on the lower bar indicate the fraction of residues that contain outliers for ≥ 3 , 2, 1 and 0 types of geometric quality criteria respectively. A grey segment represents the fraction of residues that are not modelled. The numeric value for each fraction is indicated below the corresponding segment, with a dot representing fractions $\leq 5\%$. The upper red bar (where present) indicates the fraction of residues that have poor fit to the electron density. The numeric value is given above the bar.

Mol	Chain	Length	Quality of chain
1	A	776	
2	B	124	

The following table lists non-polymeric compounds, carbohydrate monomers and non-standard residues in protein, DNA, RNA chains that are outliers for geometric or electron-density-fit criteria:

Mol	Type	Chain	Res	Chirality	Geometry	Clashes	Electron density
3	FA9	A	901	X	-	-	-

2 Entry composition i

There are 5 unique types of molecules in this entry. The entry contains 6246 atoms, of which 0 are hydrogens and 0 are deuteriums.

In the tables below, the ZeroOcc column contains the number of atoms modelled with zero occupancy, the AltConf column contains the number of residues with at least one atom in alternate conformation and the Trace column contains the number of residues modelled with at most 2 atoms.

- Molecule 1 is a protein called Lysine-specific histone demethylase 1B.

Mol	Chain	Residues	Atoms					ZeroOcc	AltConf	Trace
			Total	C	N	O	S			
1	A	740	5856	3738	998	1079	41	0	0	0

There are 4 discrepancies between the modelled and reference sequences:

Chain	Residue	Modelled	Actual	Comment	Reference
A	47	PRO	-	EXPRESSION TAG	UNP Q8NB78
A	48	LEU	-	EXPRESSION TAG	UNP Q8NB78
A	49	GLY	-	EXPRESSION TAG	UNP Q8NB78
A	50	SER	-	EXPRESSION TAG	UNP Q8NB78

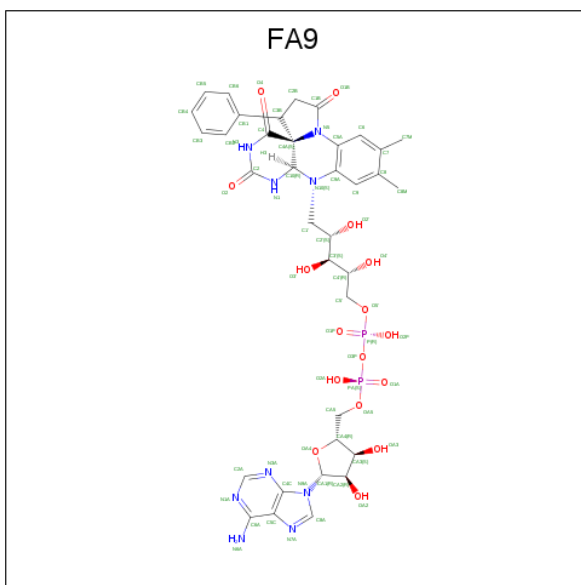
- Molecule 2 is a protein called Putative oxidoreductase GLYR1.

Mol	Chain	Residues	Atoms				ZeroOcc	AltConf	Trace
			Total	C	N	O			
2	B	12	105	69	19	17	0	0	0

There are 7 discrepancies between the modelled and reference sequences:

Chain	Residue	Modelled	Actual	Comment	Reference
B	145	PRO	-	EXPRESSION TAG	UNP Q49A26
B	146	LEU	-	EXPRESSION TAG	UNP Q49A26
B	147	GLY	-	EXPRESSION TAG	UNP Q49A26
B	148	SER	-	EXPRESSION TAG	UNP Q49A26
B	149	PRO	-	EXPRESSION TAG	UNP Q49A26
B	150	GLU	-	EXPRESSION TAG	UNP Q49A26
B	151	PHE	-	EXPRESSION TAG	UNP Q49A26

- Molecule 3 is [(2R,3S,4R,5R)-5-(6-amino-9H-purin-9-yl)-3,4-dihydroxytetrahydrofuran-2-yl]methyl (2R,3S,4S)-5-[(3R,3aS,7aR)-10,11-dimethyl-1,4,6-trioxo-3-phenyl-2,3,5,6,7,7a-hexahydro-1H-benzo[g]pyrrolo[2,1-e]pteridin-8(4H)-yl]-2,3,4-trihydroxypentyl dihydrogen diphosphate (three-letter code: FA9) (formula: C₃₆H₄₃N₉O₁₆P₂).



Mol	Chain	Residues	Atoms					ZeroOcc	AltConf
			Total	C	N	O	P		
3	A	1	63	36	9	16	2	0	0

- Molecule 4 is ZINC ION (three-letter code: ZN) (formula: Zn).

Mol	Chain	Residues	Atoms		ZeroOcc	AltConf
			Total	Zn		
4	A	3	3	3	0	0

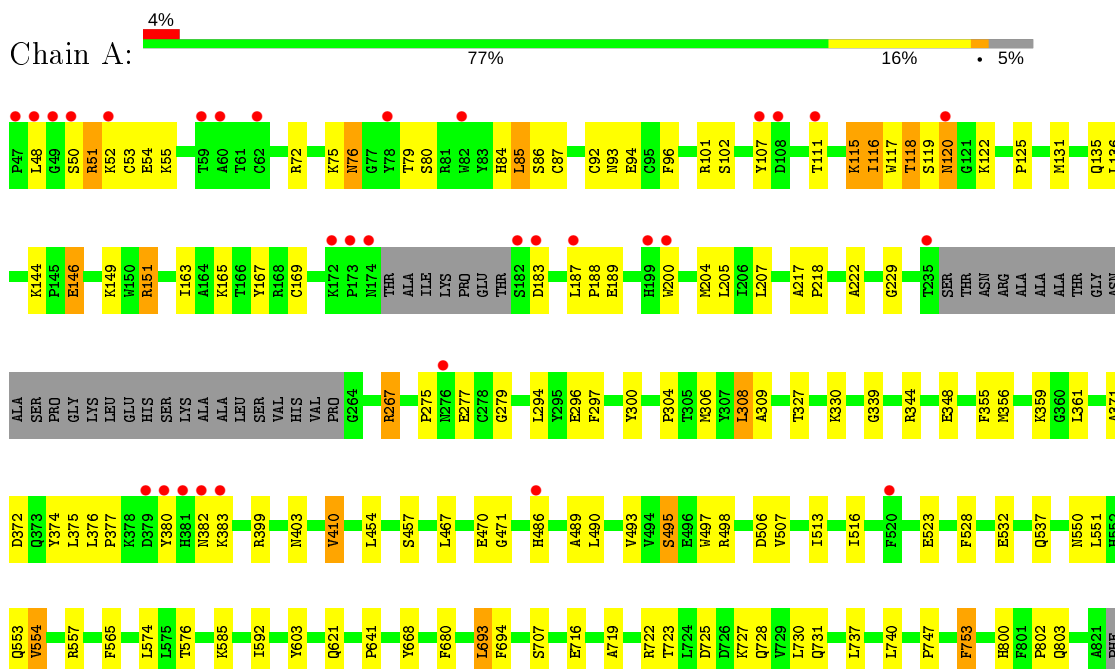
- Molecule 5 is water.

Mol	Chain	Residues	Atoms		ZeroOcc	AltConf
			Total	O		
5	A	216	216	216	0	0
5	B	3	3	3	0	0

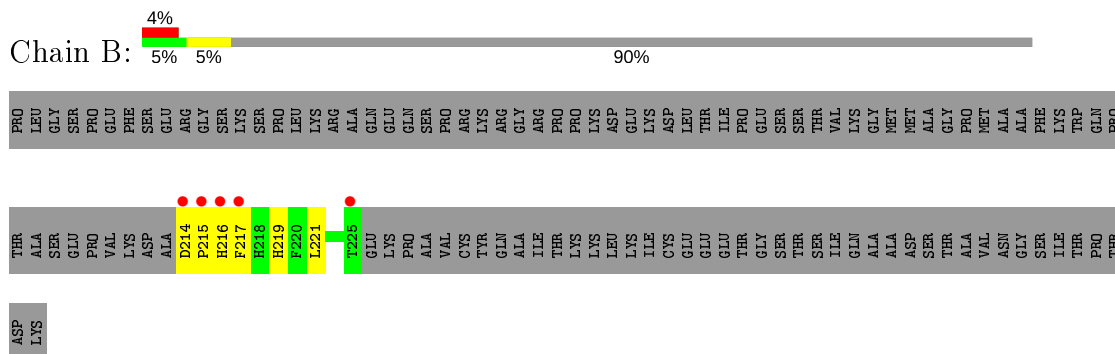
3 Residue-property plots [i](#)

These plots are drawn for all protein, RNA and DNA chains in the entry. The first graphic for a chain summarises the proportions of the various outlier classes displayed in the second graphic. The second graphic shows the sequence view annotated by issues in geometry and electron density. Residues are color-coded according to the number of geometric quality criteria for which they contain at least one outlier: green = 0, yellow = 1, orange = 2 and red = 3 or more. A red dot above a residue indicates a poor fit to the electron density ($RSRZ > 2$). Stretches of 2 or more consecutive residues without any outlier are shown as a green connector. Residues present in the sample, but not in the model, are shown in grey.

- Molecule 1: Lysine-specific histone demethylase 1B



- Molecule 2: Putative oxidoreductase GLYR1



4 Data and refinement statistics

Property	Value	Source
Space group	P 1 21 1	Depositor
Cell constants a, b, c, α , β , γ	62.82Å 90.16Å 87.82Å 90.00° 104.20° 90.00°	Depositor
Resolution (Å)	36.23 – 2.30 36.23 – 2.30	Depositor EDS
% Data completeness (in resolution range)	90.0 (36.23-2.30) 93.4 (36.23-2.30)	Depositor EDS
R_{merge}	(Not available)	Depositor
R_{sym}	(Not available)	Depositor
$\langle I/\sigma(I) \rangle$ ¹	1.70 (at 2.31Å)	Xtrriage
Refinement program	PHENIX (phenix.refine: 1.6.1_353)	Depositor
R, R_{free}	0.199 , 0.231 0.198 , 0.232	Depositor DCC
R_{free} test set	2004 reflections (5.09%)	wwPDB-VP
Wilson B-factor (Å ²)	35.0	Xtrriage
Anisotropy	0.166	Xtrriage
Bulk solvent k_{sol} (e/Å ³), B_{sol} (Å ²)	0.33 , 41.0	EDS
L-test for twinning ²	$\langle L \rangle = 0.50$, $\langle L^2 \rangle = 0.33$	Xtrriage
Estimated twinning fraction	No twinning to report.	Xtrriage
F_o, F_c correlation	0.94	EDS
Total number of atoms	6246	wwPDB-VP
Average B, all atoms (Å ²)	39.0	wwPDB-VP

Xtrriage's analysis on translational NCS is as follows: *The largest off-origin peak in the Patterson function is 5.49% of the height of the origin peak. No significant pseudotranslation is detected.*

¹Intensities estimated from amplitudes.

²Theoretical values of $\langle |L| \rangle$, $\langle L^2 \rangle$ for acentric reflections are 0.5, 0.333 respectively for untwinned datasets, and 0.375, 0.2 for perfectly twinned datasets.

5 Model quality [i](#)

5.1 Standard geometry [i](#)

Bond lengths and bond angles in the following residue types are not validated in this section: ZN, FA9

The Z score for a bond length (or angle) is the number of standard deviations the observed value is removed from the expected value. A bond length (or angle) with $|Z| > 5$ is considered an outlier worth inspection. RMSZ is the root-mean-square of all Z scores of the bond lengths (or angles).

Mol	Chain	Bond lengths		Bond angles	
		RMSZ	# Z >5	RMSZ	# Z >5
1	A	0.25	0/6001	0.44	0/8129
2	B	0.27	0/110	0.45	0/149
All	All	0.25	0/6111	0.44	0/8278

There are no bond length outliers.

There are no bond angle outliers.

There are no chirality outliers.

There are no planarity outliers.

5.2 Too-close contacts [i](#)

In the following table, the Non-H and H(model) columns list the number of non-hydrogen atoms and hydrogen atoms in the chain respectively. The H(added) column lists the number of hydrogen atoms added and optimized by MolProbity. The Clashes column lists the number of clashes within the asymmetric unit, whereas Symm-Clashes lists symmetry related clashes.

Mol	Chain	Non-H	H(model)	H(added)	Clashes	Symm-Clashes
1	A	5856	0	5774	100	0
2	B	105	0	91	4	0
3	A	63	0	40	2	0
4	A	3	0	0	0	0
5	A	216	0	0	4	0
5	B	3	0	0	0	0
All	All	6246	0	5905	104	0

The all-atom clashscore is defined as the number of clashes found per 1000 atoms (including hydrogen atoms). The all-atom clashscore for this structure is 9.

All (104) close contacts within the same asymmetric unit are listed below, sorted by their clash

magnitude.

Atom-1	Atom-2	Interatomic distance (Å)	Clash overlap (Å)
1:A:151:ARG:HD2	1:A:169:CYS:SG	2.11	0.90
1:A:454:LEU:HD21	1:A:585:LYS:HG3	1.54	0.88
1:A:267:ARG:CG	1:A:267:ARG:HH11	1.91	0.84
1:A:267:ARG:HG3	1:A:267:ARG:HH11	1.42	0.84
1:A:493:VAL:HG11	1:A:516:ILE:HG21	1.59	0.83
1:A:327:THR:OG1	1:A:330:LYS:HD3	1.90	0.72
1:A:493:VAL:HG13	1:A:516:ILE:HD13	1.70	0.71
1:A:550:ASN:HB3	1:A:553:GLN:HE22	1.55	0.71
1:A:668:TYR:CZ	1:A:747:PRO:HG3	2.25	0.70
1:A:304:PRO:HB2	1:A:308:LEU:HD22	1.74	0.68
1:A:76:ASN:HD22	1:A:76:ASN:H	1.39	0.68
1:A:136:LEU:HD13	1:A:339:GLY:HA3	1.75	0.68
1:A:603:TYR:CZ	1:A:641:PRO:HD2	2.29	0.67
1:A:131:MET:HE1	1:A:135:GLN:HG3	1.83	0.61
1:A:551:LEU:HA	1:A:554:VAL:HG13	1.84	0.60
1:A:76:ASN:HD22	1:A:76:ASN:N	1.97	0.59
1:A:306:MET:HE1	1:A:348:GLU:HG3	1.85	0.58
1:A:76:ASN:ND2	1:A:76:ASN:H	2.01	0.57
1:A:55:LYS:HE3	1:A:204:MET:HE2	1.87	0.56
1:A:498:ARG:HD2	5:A:1313:HOH:O	2.06	0.56
1:A:51:ARG:HH11	1:A:51:ARG:HG2	1.70	0.56
1:A:149:LYS:HD2	1:A:189:GLU:HB2	1.88	0.56
1:A:722:ARG:HG3	1:A:723:THR:N	2.21	0.56
1:A:495:SER:HA	1:A:498:ARG:HG2	1.88	0.55
1:A:55:LYS:HE3	1:A:204:MET:CE	2.36	0.55
1:A:382:ASN:O	1:A:383:LYS:HB3	2.04	0.55
1:A:54:GLU:HG3	1:A:55:LYS:N	2.22	0.55
1:A:296:GLU:HG3	1:A:355:PHE:CE1	2.41	0.54
1:A:603:TYR:CE2	1:A:641:PRO:HD2	2.42	0.54
1:A:371:ALA:HA	1:A:374:TYR:CZ	2.43	0.54
1:A:279:GLY:HA3	2:B:216:HIS:O	2.08	0.53
1:A:53:CYS:SG	1:A:84:HIS:HB2	2.48	0.53
1:A:668:TYR:CE2	1:A:747:PRO:HG3	2.43	0.53
1:A:217:ALA:HB3	1:A:218:PRO:HD3	1.90	0.53
1:A:399:ARG:HD3	5:A:1315:HOH:O	2.09	0.53
2:B:219:HIS:CE1	2:B:221:LEU:HB2	2.44	0.52
1:A:92:CYS:SG	1:A:94:GLU:HG2	2.49	0.52
1:A:372:ASP:OD1	1:A:372:ASP:N	2.42	0.52
1:A:727:LYS:O	1:A:731:GLN:HG3	2.09	0.52
1:A:551:LEU:HA	1:A:554:VAL:CG1	2.41	0.51
1:A:725:ASP:H	1:A:728:GLN:HE21	1.59	0.51

Continued on next page...

Continued from previous page...

Atom-1	Atom-2	Interatomic distance (Å)	Clash overlap (Å)
1:A:267:ARG:HD2	5:A:1266:HOH:O	2.10	0.51
1:A:722:ARG:HG3	1:A:723:THR:HG23	1.93	0.51
1:A:131:MET:CE	1:A:135:GLN:HG3	2.41	0.50
1:A:93:ASN:O	1:A:96:PHE:HB3	2.11	0.50
1:A:377:PRO:HD2	1:A:380:TYR:CE2	2.46	0.50
1:A:117:TRP:CD1	1:A:125:PRO:HB3	2.47	0.50
1:A:229:GLY:HA3	1:A:309:ALA:HB2	1.92	0.50
1:A:52:LYS:HD3	5:A:1182:HOH:O	2.10	0.50
1:A:725:ASP:H	1:A:728:GLN:NE2	2.10	0.49
1:A:267:ARG:HG3	1:A:267:ARG:NH1	2.21	0.49
1:A:719:ALA:O	1:A:722:ARG:HG2	2.13	0.49
1:A:136:LEU:HD13	1:A:339:GLY:CA	2.41	0.49
1:A:86:SER:HB3	1:A:205:LEU:HD23	1.95	0.49
1:A:493:VAL:CG1	1:A:516:ILE:HD13	2.39	0.48
1:A:802:PRO:O	1:A:803:GLN:HB2	2.12	0.48
1:A:120:ASN:HD22	1:A:120:ASN:C	2.16	0.48
1:A:165:LYS:HE3	1:A:165:LYS:HB2	1.55	0.47
1:A:297:PHE:HB3	1:A:300:TYR:HD2	1.78	0.47
1:A:506:ASP:OD2	1:A:557:ARG:HG3	2.14	0.47
1:A:376:LEU:HB3	1:A:380:TYR:CD2	2.50	0.47
1:A:753:PHE:CD1	1:A:753:PHE:C	2.88	0.47
1:A:102:SER:HA	1:A:107:TYR:CD1	2.49	0.47
1:A:267:ARG:CG	1:A:267:ARG:NH1	2.60	0.47
1:A:72:ARG:O	1:A:94:GLU:HG3	2.15	0.46
1:A:550:ASN:HD22	1:A:716:GLU:HG3	1.79	0.46
1:A:102:SER:HA	1:A:107:TYR:CG	2.50	0.46
1:A:84:HIS:CD2	1:A:84:HIS:C	2.90	0.45
1:A:490:LEU:HD13	1:A:513:ILE:HG23	1.99	0.45
3:A:901:FA9:H3	3:A:901:FA9:CB6	2.46	0.44
1:A:497:TRP:CH2	1:A:507:VAL:HG22	2.53	0.44
1:A:493:VAL:CG1	1:A:516:ILE:HG21	2.41	0.44
1:A:693:LEU:HD22	1:A:694:PHE:CD1	2.52	0.44
1:A:277:GLU:O	2:B:217:PHE:HE1	2.00	0.44
1:A:565:PHE:CD1	1:A:800:HIS:CE1	3.06	0.44
1:A:470:GLU:HA	1:A:471:GLY:HA2	1.56	0.44
1:A:383:LYS:HA	1:A:621:GLN:OE1	2.19	0.43
1:A:204:MET:HE2	1:A:204:MET:HA	1.99	0.43
1:A:693:LEU:HD22	1:A:694:PHE:CE1	2.54	0.43
1:A:85:LEU:HA	1:A:85:LEU:HD12	1.84	0.42
1:A:163:ILE:O	1:A:167:TYR:HB2	2.18	0.42
1:A:375:LEU:HD12	1:A:403:ASN:HB3	2.01	0.42

Continued on next page...

Continued from previous page...

Atom-1	Atom-2	Interatomic distance (Å)	Clash overlap (Å)
1:A:50:SER:N	1:A:79:THR:O	2.44	0.42
1:A:53:CYS:SG	1:A:55:LYS:HB3	2.59	0.42
1:A:87:CYS:HG	1:A:200:TRP:HZ3	1.64	0.42
1:A:144:LYS:HE2	1:A:146:GLU:CG	2.50	0.42
1:A:304:PRO:HB2	1:A:308:LEU:CD2	2.46	0.42
1:A:205:LEU:CD1	1:A:207:LEU:O	2.67	0.42
1:A:48:LEU:HD23	1:A:48:LEU:HA	1.74	0.42
1:A:725:ASP:CG	1:A:728:GLN:HE21	2.23	0.42
1:A:359:LYS:HB2	1:A:361:LEU:HD23	2.01	0.41
1:A:410:VAL:HG22	1:A:592:ILE:HG23	2.02	0.41
1:A:187:LEU:HA	1:A:188:PRO:HD3	1.96	0.41
1:A:51:ARG:HH11	1:A:51:ARG:CG	2.33	0.41
1:A:222:ALA:HB1	1:A:275:PRO:HG2	2.03	0.41
1:A:528:PHE:HA	1:A:532:GLU:OE2	2.20	0.41
1:A:85:LEU:O	1:A:205:LEU:HD22	2.20	0.41
3:A:901:FA9:H2	3:A:901:FA9:H22	1.85	0.41
1:A:486:HIS:O	1:A:489:ALA:HB3	2.20	0.41
1:A:115:LYS:O	1:A:119:SER:N	2.54	0.41
1:A:116:ILE:C	1:A:118:THR:N	2.74	0.40
1:A:693:LEU:HA	1:A:693:LEU:HD23	1.94	0.40
1:A:737:LEU:HA	1:A:737:LEU:HD23	1.91	0.40
2:B:214:ASP:C	2:B:216:HIS:H	2.24	0.40

There are no symmetry-related clashes.

5.3 Torsion angles [i](#)

5.3.1 Protein backbone [i](#)

In the following table, the Percentiles column shows the percent Ramachandran outliers of the chain as a percentile score with respect to all X-ray entries followed by that with respect to entries of similar resolution.

The Analysed column shows the number of residues for which the backbone conformation was analysed, and the total number of residues.

Mol	Chain	Analysed	Favoured	Allowed	Outliers	Percentiles
1	A	734/776 (95%)	700 (95%)	33 (4%)	1 (0%)	51 64
2	B	10/124 (8%)	8 (80%)	1 (10%)	1 (10%)	0 0
All	All	744/900 (83%)	708 (95%)	34 (5%)	2 (0%)	41 50

All (2) Ramachandran outliers are listed below:

Mol	Chain	Res	Type
1	A	523	GLU
2	B	215	PRO

5.3.2 Protein sidechains [i](#)

In the following table, the Percentiles column shows the percent sidechain outliers of the chain as a percentile score with respect to all X-ray entries followed by that with respect to entries of similar resolution.

The Analysed column shows the number of residues for which the sidechain conformation was analysed, and the total number of residues.

Mol	Chain	Analysed	Rotameric	Outliers	Percentiles	
1	A	635/662 (96%)	601 (95%)	34 (5%)	22	30
2	B	12/106 (11%)	12 (100%)	0	100	100
All	All	647/768 (84%)	613 (95%)	34 (5%)	22	31

All (34) residues with a non-rotameric sidechain are listed below:

Mol	Chain	Res	Type
1	A	51	ARG
1	A	75	LYS
1	A	76	ASN
1	A	80	SER
1	A	85	LEU
1	A	101	ARG
1	A	111	THR
1	A	115	LYS
1	A	116	ILE
1	A	118	THR
1	A	120	ASN
1	A	122	LYS
1	A	146	GLU
1	A	151	ARG
1	A	183	ASP
1	A	267	ARG
1	A	294	LEU
1	A	308	LEU
1	A	344	ARG
1	A	356	MET
1	A	410	VAL

Continued on next page...

Continued from previous page...

Mol	Chain	Res	Type
1	A	457	SER
1	A	467	LEU
1	A	495	SER
1	A	537	GLN
1	A	554	VAL
1	A	574	LEU
1	A	576	THR
1	A	680	PHE
1	A	693	LEU
1	A	707	SER
1	A	730	LEU
1	A	740	LEU
1	A	753	PHE

Some sidechains can be flipped to improve hydrogen bonding and reduce clashes. All (10) such sidechains are listed below:

Mol	Chain	Res	Type
1	A	76	ASN
1	A	120	ASN
1	A	198	ASN
1	A	276	ASN
1	A	400	GLN
1	A	553	GLN
1	A	703	GLN
1	A	728	GLN
1	A	731	GLN
2	B	216	HIS

5.3.3 RNA [i](#)

There are no RNA molecules in this entry.

5.4 Non-standard residues in protein, DNA, RNA chains [i](#)

There are no non-standard protein/DNA/RNA residues in this entry.

5.5 Carbohydrates [i](#)

There are no carbohydrates in this entry.

5.6 Ligand geometry

Of 4 ligands modelled in this entry, 3 are monoatomic - leaving 1 for Mogul analysis.

In the following table, the Counts columns list the number of bonds (or angles) for which Mogul statistics could be retrieved, the number of bonds (or angles) that are observed in the model and the number of bonds (or angles) that are defined in the Chemical Component Dictionary. The Link column lists molecule types, if any, to which the group is linked. The Z score for a bond length (or angle) is the number of standard deviations the observed value is removed from the expected value. A bond length (or angle) with $|Z| > 2$ is considered an outlier worth inspection. RMSZ is the root-mean-square of all Z scores of the bond lengths (or angles).

Mol	Type	Chain	Res	Link	Bond lengths			Bond angles		
					Counts	RMSZ	$\# Z > 2$	Counts	RMSZ	$\# Z > 2$
3	FA9	A	901	-	60,70,70	2.08	24 (40%)	70,109,109	2.70	18 (25%)

In the following table, the Chirals column lists the number of chiral outliers, the number of chiral centers analysed, the number of these observed in the model and the number defined in the Chemical Component Dictionary. Similar counts are reported in the Torsion and Rings columns. '-' means no outliers of that kind were identified.

Mol	Type	Chain	Res	Link	Chirals	Torsions	Rings
3	FA9	A	901	-	1/1/17/19	5/34/106/106	0/7/8/8

All (24) bond length outliers are listed below:

Mol	Chain	Res	Type	Atoms	Z	Observed(Å)	Ideal(Å)
3	A	901	FA9	C4A-N5	-5.16	1.42	1.48
3	A	901	FA9	C2B-C3B	-4.56	1.47	1.53
3	A	901	FA9	C4-N3	-4.32	1.30	1.37
3	A	901	FA9	C9A-C5A	3.73	1.47	1.40
3	A	901	FA9	C2-N3	-3.41	1.31	1.37
3	A	901	FA9	CB1-C3B	-3.29	1.47	1.51
3	A	901	FA9	P-O2P	-3.25	1.40	1.55
3	A	901	FA9	CA2-CA1	-3.24	1.48	1.53
3	A	901	FA9	P-O1P	-3.23	1.39	1.50
3	A	901	FA9	C9-C8	-3.09	1.35	1.39
3	A	901	FA9	O2-C2	-2.93	1.17	1.23
3	A	901	FA9	PA-O1A	-2.87	1.40	1.50
3	A	901	FA9	PA-O2A	-2.69	1.42	1.55
3	A	901	FA9	C5C-N7A	-2.62	1.30	1.39
3	A	901	FA9	O4-C4	-2.60	1.18	1.22
3	A	901	FA9	C2-N1	-2.58	1.28	1.34
3	A	901	FA9	C8A-N7A	-2.32	1.30	1.34
3	A	901	FA9	CB6-CB1	-2.31	1.35	1.39

Continued on next page...

Continued from previous page...

Mol	Chain	Res	Type	Atoms	Z	Observed(Å)	Ideal(Å)
3	A	901	FA9	OA4-CA4	-2.15	1.40	1.45
3	A	901	FA9	C5A-N5	-2.11	1.39	1.42
3	A	901	FA9	O3'-C3'	-2.10	1.38	1.43
3	A	901	FA9	C4C-N3A	-2.09	1.32	1.35
3	A	901	FA9	C1B-N5	-2.06	1.35	1.37
3	A	901	FA9	C8-C7	2.02	1.45	1.40

All (18) bond angle outliers are listed below:

Mol	Chain	Res	Type	Atoms	Z	Observed(°)	Ideal(°)
3	A	901	FA9	C3B-C2B-C1B	-13.78	87.66	104.29
3	A	901	FA9	C4A-C10-N10	7.66	117.41	109.35
3	A	901	FA9	O1B-C1B-C2B	-6.44	117.86	127.24
3	A	901	FA9	O1B-C1B-N5	6.22	131.03	125.23
3	A	901	FA9	CB2-CB1-C3B	-4.13	112.79	121.08
3	A	901	FA9	C4-N3-C2	-3.89	120.15	126.04
3	A	901	FA9	C4C-C5C-N7A	-3.28	105.98	109.40
3	A	901	FA9	CB6-CB1-C3B	3.24	127.57	121.08
3	A	901	FA9	C1'-N10-C9A	-3.19	113.06	120.03
3	A	901	FA9	O5'-C5'-C4'	3.09	117.60	109.36
3	A	901	FA9	C6-C5A-C9A	-2.90	115.69	120.11
3	A	901	FA9	C9-C9A-N10	-2.84	114.49	120.67
3	A	901	FA9	C2B-C3B-CB1	2.46	122.29	116.73
3	A	901	FA9	OA3-CA3-CA4	-2.29	104.43	111.05
3	A	901	FA9	O5'-P-O1P	-2.23	100.36	109.07
3	A	901	FA9	C6-C5A-N5	2.11	124.17	121.41
3	A	901	FA9	C7M-C7-C8	-2.01	116.61	120.74
3	A	901	FA9	N3A-C2A-N1A	-2.01	125.54	128.68

All (1) chirality outliers are listed below:

Mol	Chain	Res	Type	Atom
3	A	901	FA9	C3B

All (5) torsion outliers are listed below:

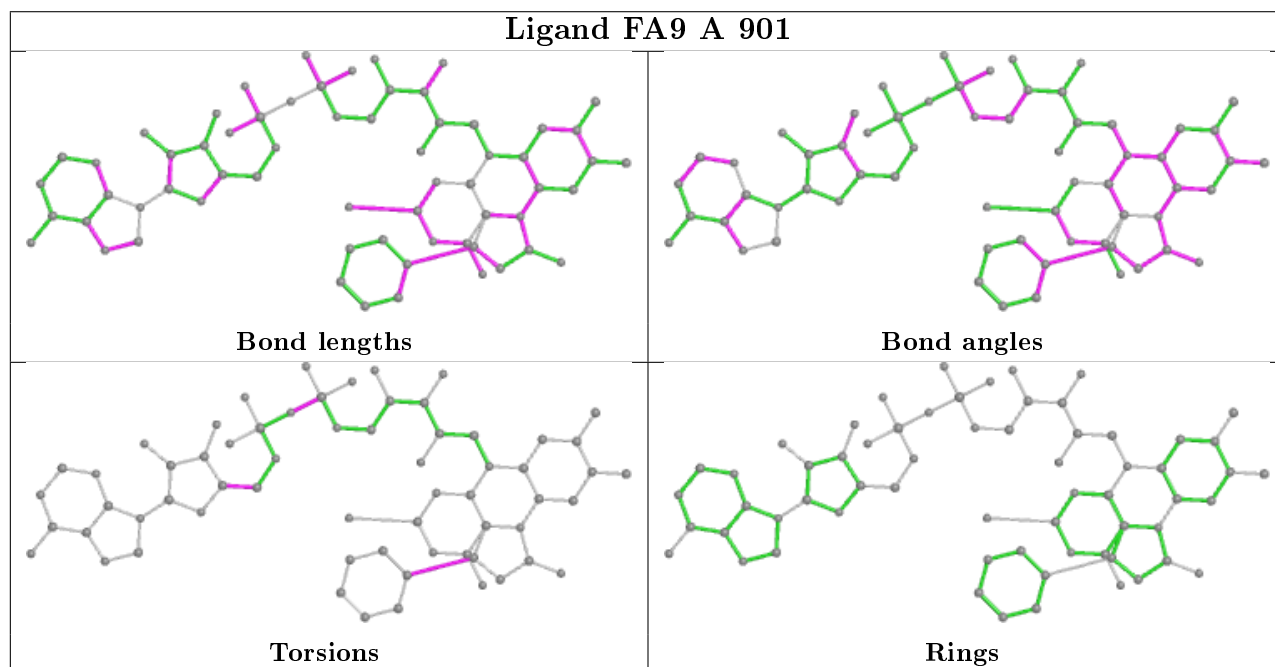
Mol	Chain	Res	Type	Atoms
3	A	901	FA9	PA-O3P-P-O5'
3	A	901	FA9	C2B-C3B-CB1-CB2
3	A	901	FA9	C4A-C3B-CB1-CB6
3	A	901	FA9	OA4-CA4-CA5-OA5
3	A	901	FA9	C4A-C3B-CB1-CB2

There are no ring outliers.

1 monomer is involved in 2 short contacts:

Mol	Chain	Res	Type	Clashes	Symm-Clashes
3	A	901	FA9	2	0

The following is a two-dimensional graphical depiction of Mogul quality analysis of bond lengths, bond angles, torsion angles, and ring geometry for all instances of the Ligand of Interest. In addition, ligands with molecular weight > 250 and outliers as shown on the validation Tables will also be included. For torsion angles, if less than 5% of the Mogul distribution of torsion angles is within 10 degrees of the torsion angle in question, then that torsion angle is considered an outlier. Any bond that is central to one or more torsion angles identified as an outlier by Mogul will be highlighted in the graph. For rings, the root-mean-square deviation (RMSD) between the ring in question and similar rings identified by Mogul is calculated over all ring torsion angles. If the average RMSD is greater than 60 degrees and the minimal RMSD between the ring in question and any Mogul-identified rings is also greater than 60 degrees, then that ring is considered an outlier. The outliers are highlighted in purple. The color gray indicates Mogul did not find sufficient equivalents in the CSD to analyse the geometry.



5.7 Other polymers [i](#)

There are no such residues in this entry.

5.8 Polymer linkage issues [i](#)

There are no chain breaks in this entry.

6 Fit of model and data [i](#)

6.1 Protein, DNA and RNA chains [i](#)

In the following table, the column labelled '#RSRZ > 2' contains the number (and percentage) of RSRZ outliers, followed by percent RSRZ outliers for the chain as percentile scores relative to all X-ray entries and entries of similar resolution. The OWAB column contains the minimum, median, 95th percentile and maximum values of the occupancy-weighted average B-factor per residue. The column labelled 'Q < 0.9' lists the number of (and percentage) of residues with an average occupancy less than 0.9.

Mol	Chain	Analysed	<RSRZ>	#RSRZ > 2	OWAB(Å ²)	Q < 0.9
1	A	740/776 (95%)	-0.01	31 (4%) 36 43	19, 35, 65, 89	0
2	B	12/124 (9%)	2.33	5 (41%) 0 0	33, 47, 77, 80	0
All	All	752/900 (83%)	0.03	36 (4%) 30 37	19, 36, 65, 89	0

All (36) RSRZ outliers are listed below:

Mol	Chain	Res	Type	RSRZ
2	B	216	HIS	7.8
1	A	48	LEU	6.3
2	B	215	PRO	6.2
2	B	217	PHE	5.6
1	A	47	PRO	5.5
1	A	380	TYR	4.8
2	B	214	ASP	4.6
1	A	200	TRP	4.6
1	A	60	ALA	4.1
1	A	173	PRO	3.8
1	A	381	HIS	3.5
2	B	225	THR	3.1
1	A	486	HIS	3.1
1	A	182	SER	3.0
1	A	379	ASP	2.9
1	A	276	ASN	2.9
1	A	108	ASP	2.9
1	A	120	ASN	2.8
1	A	49	GLY	2.7
1	A	382	ASN	2.7
1	A	183	ASP	2.6
1	A	172	LYS	2.5
1	A	199	HIS	2.4
1	A	59	THR	2.4

Continued on next page...

Continued from previous page...

Mol	Chain	Res	Type	RSRZ
1	A	52	LYS	2.4
1	A	82	TRP	2.4
1	A	235	THR	2.4
1	A	78	TYR	2.3
1	A	107	TYR	2.3
1	A	174	ASN	2.3
1	A	187	LEU	2.3
1	A	62	CYS	2.1
1	A	520	PHE	2.1
1	A	50	SER	2.1
1	A	383	LYS	2.1
1	A	111	THR	2.1

6.2 Non-standard residues in protein, DNA, RNA chains [i](#)

There are no non-standard protein/DNA/RNA residues in this entry.

6.3 Carbohydrates [i](#)

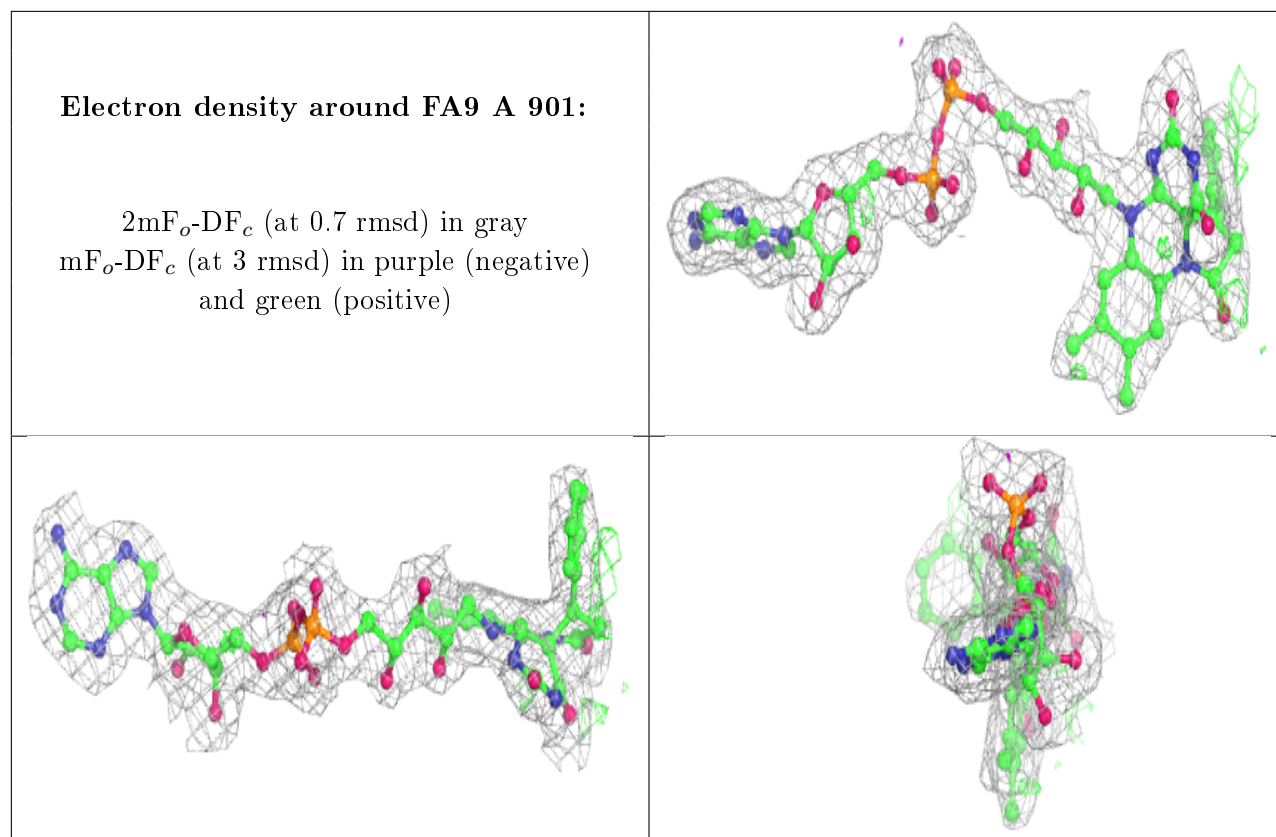
There are no carbohydrates in this entry.

6.4 Ligands [i](#)

In the following table, the Atoms column lists the number of modelled atoms in the group and the number defined in the chemical component dictionary. The B-factors column lists the minimum, median, 95th percentile and maximum values of B factors of atoms in the group. The column labelled 'Q< 0.9' lists the number of atoms with occupancy less than 0.9.

Mol	Type	Chain	Res	Atoms	RSCC	RSR	B-factors(Å ²)	Q<0.9
3	FA9	A	901	63/63	0.98	0.12	16,25,38,41	0
4	ZN	A	904	1/1	0.99	0.12	40,40,40,40	0
4	ZN	A	902	1/1	0.99	0.08	41,41,41,41	0
4	ZN	A	903	1/1	0.99	0.09	38,38,38,38	0

The following is a graphical depiction of the model fit to experimental electron density of all instances of the Ligand of Interest. In addition, ligands with molecular weight > 250 and outliers as shown on the geometry validation Tables will also be included. Each fit is shown from different orientation to approximate a three-dimensional view.



6.5 Other polymers [i](#)

There are no such residues in this entry.