



# Full wwPDB X-ray Structure Validation Report ⓘ

May 14, 2020 – 09:49 pm BST

PDB ID : 4GTO  
Title : FTase in complex with BMS analogue 14  
Authors : Guo, Z.; Stigter, E.A.; Bon, R.S.; Waldmann, H.; Blankenfeldt, W.; Goody, R.S.  
Deposited on : 2012-08-29  
Resolution : 2.15 Å(reported)

This is a Full wwPDB X-ray Structure Validation Report for a publicly released PDB entry.

We welcome your comments at [validation@mail.wwpdb.org](mailto:validation@mail.wwpdb.org)

A user guide is available at

<https://www.wwpdb.org/validation/2017/XrayValidationReportHelp>

with specific help available everywhere you see the ⓘ symbol.

---

The following versions of software and data (see [references ⓘ](#)) were used in the production of this report:

MolProbity : 4.02b-467  
Mogul : 1.8.5 (274361), CSD as541be (2020)  
Xtriage (Phenix) : 1.13  
EDS : 2.11  
buster-report : 1.1.7 (2018)  
Percentile statistics : 20191225.v01 (using entries in the PDB archive December 25th 2019)  
Refmac : 5.8.0158  
CCP4 : 7.0.044 (Gargrove)  
Ideal geometry (proteins) : Engh & Huber (2001)  
Ideal geometry (DNA, RNA) : Parkinson et al. (1996)  
Validation Pipeline (wwPDB-VP) : 2.11

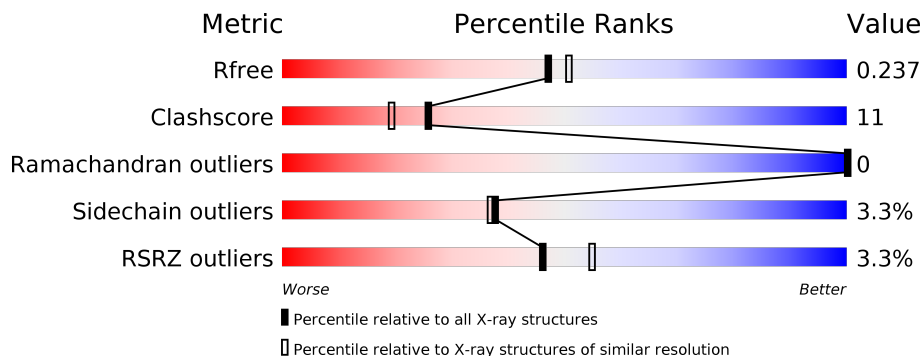
# 1 Overall quality at a glance

The following experimental techniques were used to determine the structure:

*X-RAY DIFFRACTION*

The reported resolution of this entry is 2.15 Å.

Percentile scores (ranging between 0-100) for global validation metrics of the entry are shown in the following graphic. The table shows the number of entries on which the scores are based.



Metric	Whole archive (#Entries)	Similar resolution (#Entries, resolution range(Å))
$R_{free}$	130704	1479 (2.16-2.16)
Clashscore	141614	1585 (2.16-2.16)
Ramachandran outliers	138981	1560 (2.16-2.16)
Sidechain outliers	138945	1559 (2.16-2.16)
RSRZ outliers	127900	1456 (2.16-2.16)

The table below summarises the geometric issues observed across the polymeric chains and their fit to the electron density. The red, orange, yellow and green segments on the lower bar indicate the fraction of residues that contain outliers for  $\geq 3$ , 2, 1 and 0 types of geometric quality criteria respectively. A grey segment represents the fraction of residues that are not modelled. The numeric value for each fraction is indicated below the corresponding segment, with a dot representing fractions  $\leq 5\%$ . The upper red bar (where present) indicates the fraction of residues that have poor fit to the electron density. The numeric value is given above the bar.

Mol	Chain	Length	Quality of chain
1	A	377	
2	B	427	

The following table lists non-polymeric compounds, carbohydrate monomers and non-standard residues in protein, DNA, RNA chains that are outliers for geometric or electron-density-fit criteria:

Mol	Type	Chain	Res	Chirality	Geometry	Clashes	Electron density
6	DMS	B	504	-	-	X	-

## 2 Entry composition

There are 7 unique types of molecules in this entry. The entry contains 6507 atoms, of which 0 are hydrogens and 0 are deuteriums.

In the tables below, the ZeroOcc column contains the number of atoms modelled with zero occupancy, the AltConf column contains the number of residues with at least one atom in alternate conformation and the Trace column contains the number of residues modelled with at most 2 atoms.

- Molecule 1 is a protein called Protein farnesyltransferase/geranylgeranyltransferase type-1 subunit alpha.

Mol	Chain	Residues	Atoms					ZeroOcc	AltConf	Trace
			Total	C	N	O	S			
1	A	317	2707	1725	476	501	5	0	3	0

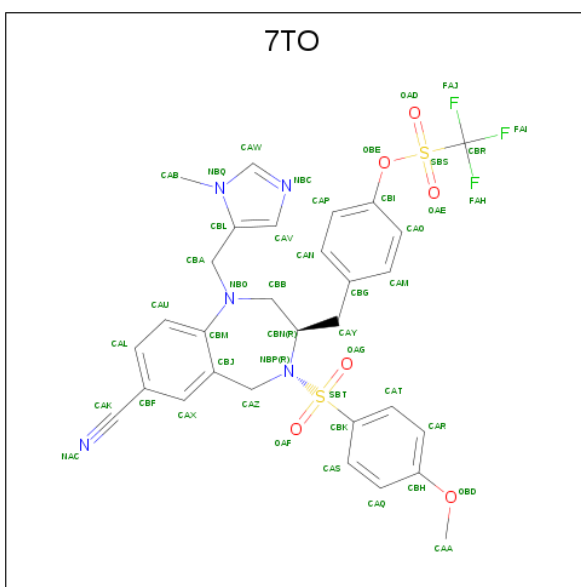
- Molecule 2 is a protein called Protein farnesyltransferase subunit beta.

Mol	Chain	Residues	Atoms					ZeroOcc	AltConf	Trace
			Total	C	N	O	S			
2	B	406	3173	2024	547	578	24	0	2	0

- Molecule 3 is ZINC ION (three-letter code: ZN) (formula: Zn).

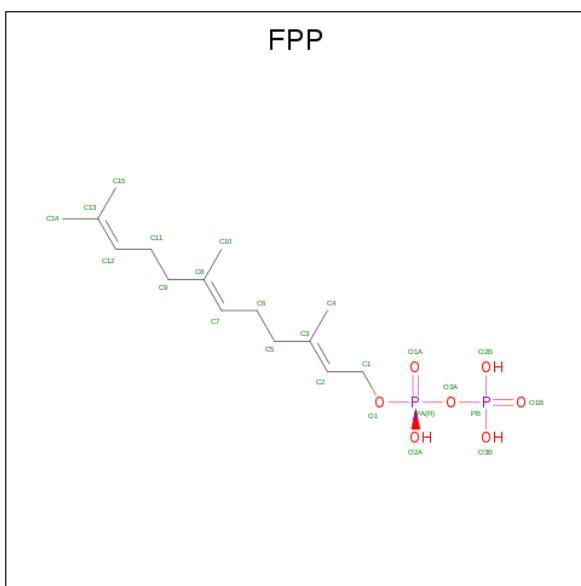
Mol	Chain	Residues	Atoms		ZeroOcc	AltConf
			Total	Zn		
3	B	1	1	1	0	0

- Molecule 4 is 4-((3R)-7-cyano-4-[(4-methoxyphenyl)sulfonyl]-1-[(1-methyl-1H-imidazol-5-yl)methyl]-2,3,4,5-tetrahydro-1H-1,4-benzodiazepin-3-yl)methyl)phenyl trifluoromethanesulfonate (three-letter code: 7TO) (formula: C<sub>30</sub>H<sub>28</sub>F<sub>3</sub>N<sub>5</sub>O<sub>6</sub>S<sub>2</sub>).



Mol	Chain	Residues	Atoms					ZeroOcc	AltConf	
			Total	C	F	N	O			S
4	B	1	46	30	3	5	6	2	0	0

- Molecule 5 is FARNESYL DIPHOSPHATE (three-letter code: FPP) (formula:  $C_{15}H_{28}O_7P_2$ ).



Mol	Chain	Residues	Atoms				ZeroOcc	AltConf
			Total	C	O	P		
5	B	1	14	5	7	2	0	0

- Molecule 6 is DIMETHYL SULFOXIDE (three-letter code: DMS) (formula:  $C_2H_6OS$ ).



Mol	Chain	Residues	Atoms				ZeroOcc	AltConf
			Total	C	O	S		
6	B	1	4	2	1	1	0	0

- Molecule 7 is water.

Mol	Chain	Residues	Atoms		ZeroOcc	AltConf
			Total	O		
7	A	268	268	268	0	0
7	B	294	294	294	0	0



## 4 Data and refinement statistics

Property	Value	Source
Space group	P 61	Depositor
Cell constants a, b, c, $\alpha$ , $\beta$ , $\gamma$	172.70 Å 172.70 Å 69.59 Å 90.00° 90.00° 120.00°	Depositor
Resolution (Å)	29.91 – 2.15 29.63 – 2.15	Depositor EDS
% Data completeness (in resolution range)	99.0 (29.91-2.15) 99.0 (29.63-2.15)	Depositor EDS
$R_{merge}$	(Not available)	Depositor
$R_{sym}$	0.05	Depositor
$\langle I/\sigma(I) \rangle$ <sup>1</sup>	3.91 (at 2.16 Å)	Xtrriage
Refinement program	REFMAC 5.2.0019	Depositor
R, $R_{free}$	0.188 , 0.225 0.205 , 0.237	Depositor DCC
$R_{free}$ test set	3190 reflections (4.99%)	wwPDB-VP
Wilson B-factor (Å <sup>2</sup> )	31.4	Xtrriage
Anisotropy	0.217	Xtrriage
Bulk solvent $k_{sol}$ (e/Å <sup>3</sup> ), $B_{sol}$ (Å <sup>2</sup> )	0.33 , 42.8	EDS
L-test for twinning <sup>2</sup>	$\langle  L  \rangle = 0.48$ , $\langle L^2 \rangle = 0.31$	Xtrriage
Estimated twinning fraction	0.032 for h,-h-k,-l	Xtrriage
$F_o, F_c$ correlation	0.95	EDS
Total number of atoms	6507	wwPDB-VP
Average B, all atoms (Å <sup>2</sup> )	48.0	wwPDB-VP

Xtrriage's analysis on translational NCS is as follows: *The largest off-origin peak in the Patterson function is 2.65% of the height of the origin peak. No significant pseudotranslation is detected.*

<sup>1</sup>Intensities estimated from amplitudes.

<sup>2</sup>Theoretical values of  $\langle |L| \rangle$ ,  $\langle L^2 \rangle$  for acentric reflections are 0.5, 0.333 respectively for untwinned datasets, and 0.375, 0.2 for perfectly twinned datasets.



## 5 Model quality [i](#)

### 5.1 Standard geometry [i](#)

Bond lengths and bond angles in the following residue types are not validated in this section: ZN, DMS, FPP, 7TO

The Z score for a bond length (or angle) is the number of standard deviations the observed value is removed from the expected value. A bond length (or angle) with  $|Z| > 5$  is considered an outlier worth inspection. RMSZ is the root-mean-square of all Z scores of the bond lengths (or angles).

Mol	Chain	Bond lengths		Bond angles	
		RMSZ	# Z  >5	RMSZ	# Z  >5
1	A	0.52	0/2782	0.67	5/3776 (0.1%)
2	B	0.49	0/3264	0.62	0/4437
All	All	0.50	0/6046	0.64	5/8213 (0.1%)

There are no bond length outliers.

All (5) bond angle outliers are listed below:

Mol	Chain	Res	Type	Atoms	Z	Observed(°)	Ideal(°)
1	A	331	GLU	CB-CA-C	8.39	127.19	110.40
1	A	328	ASP	CB-CA-C	8.21	126.81	110.40
1	A	332	ASP	N-CA-CB	-7.59	96.94	110.60
1	A	332	ASP	N-CA-C	5.66	126.28	111.00
1	A	329	ASN	N-CA-C	5.61	126.14	111.00

There are no chirality outliers.

There are no planarity outliers.

### 5.2 Too-close contacts [i](#)

In the following table, the Non-H and H(model) columns list the number of non-hydrogen atoms and hydrogen atoms in the chain respectively. The H(added) column lists the number of hydrogen atoms added and optimized by MolProbity. The Clashes column lists the number of clashes within the asymmetric unit, whereas Symm-Clashes lists symmetry related clashes.

Mol	Chain	Non-H	H(model)	H(added)	Clashes	Symm-Clashes
1	A	2707	0	2631	62	1
2	B	3173	0	3081	58	0
3	B	1	0	0	0	0
4	B	46	0	28	2	0

*Continued on next page...*

*Continued from previous page...*

Mol	Chain	Non-H	H(model)	H(added)	Clashes	Symm-Clashes
5	B	14	0	6	2	0
6	B	4	0	6	5	0
7	A	268	0	0	28	0
7	B	294	0	0	24	1
All	All	6507	0	5752	123	1

The all-atom clashscore is defined as the number of clashes found per 1000 atoms (including hydrogen atoms). The all-atom clashscore for this structure is 11.

All (123) close contacts within the same asymmetric unit are listed below, sorted by their clash magnitude.

Atom-1	Atom-2	Interatomic distance (Å)	Clash overlap (Å)
1:A:368:SER:CB	1:A:370:GLU:OE2	1.85	1.23
1:A:368:SER:HB3	1:A:370:GLU:OE2	1.38	1.21
1:A:335:ASN:HB3	7:A:616:HOH:O	1.42	1.17
2:B:66:HIS:HD2	7:B:820:HOH:O	1.40	1.03
2:B:66:HIS:CD2	7:B:820:HOH:O	2.16	0.97
1:A:156:ILE:HG12	1:A:172:ARG:HH12	1.32	0.94
1:A:211:GLN:OE1	7:A:451:HOH:O	1.86	0.93
6:B:504:DMS:H21	7:B:873:HOH:O	1.68	0.93
2:B:190:SER:HB2	2:B:199:VAL:HG11	1.53	0.90
1:A:368:SER:HB2	1:A:370:GLU:OE2	1.71	0.87
1:A:330:LYS:HD2	7:A:456:HOH:O	1.76	0.85
6:B:504:DMS:C2	7:B:873:HOH:O	2.24	0.81
1:A:152:MET:O	1:A:156:ILE:HG13	1.80	0.81
2:B:150:LEU:HB2	2:B:193[A]:MET:HE3	1.64	0.79
2:B:118:ILE:HD11	7:B:717:HOH:O	1.82	0.78
2:B:150:LEU:CB	2:B:193[A]:MET:HE3	2.13	0.78
1:A:211:GLN:HG3	7:A:543:HOH:O	1.85	0.76
1:A:156:ILE:HG12	1:A:172:ARG:NH1	2.02	0.74
1:A:335:ASN:CB	7:A:572:HOH:O	2.36	0.73
1:A:335:ASN:ND2	7:A:572:HOH:O	2.22	0.72
2:B:77:LYS:HD3	2:B:346:PRO:O	1.89	0.71
2:B:150:LEU:HB2	2:B:193[A]:MET:CE	2.20	0.71
1:A:335:ASN:CG	7:A:572:HOH:O	2.28	0.70
1:A:334:LEU:O	1:A:338:LEU:HG	1.91	0.70
1:A:302:LEU:HD23	7:A:621:HOH:O	1.91	0.70
1:A:156:ILE:CG1	1:A:172:ARG:HH12	2.05	0.70
2:B:93:TYR:CE1	7:B:757:HOH:O	2.44	0.70
2:B:70:ARG:HB3	7:B:764:HOH:O	1.91	0.69
1:A:265:GLU:HG3	7:A:554:HOH:O	1.92	0.67

*Continued on next page...*

*Continued from previous page...*

Atom-1	Atom-2	Interatomic distance (Å)	Clash overlap (Å)
1:A:214:ARG:HG2	1:A:214:ARG:HH11	1.59	0.67
4:B:502:7TO:H2	7:B:873:HOH:O	1.93	0.67
2:B:77:LYS:CD	2:B:346:PRO:O	2.43	0.66
1:A:326:GLN:HG2	7:A:561:HOH:O	1.96	0.66
2:B:202:ARG:NH2	7:B:688:HOH:O	2.28	0.65
1:A:287:ARG:HA	7:A:580:HOH:O	1.96	0.65
2:B:190:SER:HB2	2:B:199:VAL:CG1	2.25	0.64
2:B:150:LEU:CB	2:B:193[A]:MET:CE	2.74	0.63
1:A:231:VAL:HG21	1:A:266:MET:CE	2.29	0.62
1:A:200:TYR:HB3	5:B:503:FPP:H42	1.82	0.61
1:A:109:ARG:NH1	7:A:634:HOH:O	2.33	0.61
1:A:368:SER:HB3	1:A:370:GLU:CD	2.19	0.61
1:A:150:GLU:HG2	7:A:648:HOH:O	2.01	0.60
2:B:201:VAL:HG11	2:B:251:TYR:HB3	1.83	0.60
1:A:81:ASN:HB3	7:A:425:HOH:O	2.03	0.58
2:B:301:SER:O	2:B:305:ALA:HB3	2.02	0.58
2:B:409:ILE:HG22	7:B:721:HOH:O	2.03	0.57
1:A:335:ASN:HB2	7:A:572:HOH:O	2.01	0.57
1:A:251:SER:HB2	7:A:620:HOH:O	2.05	0.57
4:B:502:7TO:CAA	7:B:873:HOH:O	2.52	0.57
2:B:70:ARG:HG3	7:B:611:HOH:O	2.05	0.57
1:A:231:VAL:HG21	1:A:266:MET:HE2	1.86	0.57
2:B:150:LEU:HB3	2:B:193[A]:MET:HE3	1.86	0.56
2:B:93:TYR:CZ	6:B:504:DMS:H12	2.41	0.55
2:B:83:LYS:HE2	7:B:830:HOH:O	2.06	0.54
1:A:214:ARG:HG2	1:A:214:ARG:NH1	2.22	0.54
2:B:70:ARG:HD2	7:B:824:HOH:O	2.07	0.54
2:B:226:ALA:HA	2:B:259:LEU:HD21	1.89	0.53
1:A:335:ASN:CB	7:A:616:HOH:O	2.22	0.53
2:B:190:SER:CB	2:B:199:VAL:HG11	2.33	0.53
1:A:54:GLY:HA3	1:A:121:ARG:CZ	2.38	0.53
2:B:149:HIS:CE1	2:B:193[A]:MET:HG3	2.44	0.52
2:B:355:GLY:N	7:B:780:HOH:O	2.37	0.52
1:A:97[B]:ARG:NH2	7:A:510:HOH:O	2.42	0.52
1:A:312:ILE:HG23	1:A:340:LEU:HD22	1.92	0.51
2:B:93:TYR:HE1	7:B:757:HOH:O	1.88	0.51
1:A:329:ASN:O	1:A:332:ASP:HB3	2.10	0.51
1:A:328:ASP:HB2	7:A:562:HOH:O	2.11	0.50
1:A:334:LEU:HD13	1:A:367:HIS:HB2	1.94	0.50
2:B:312:HIS:CE1	7:B:701:HOH:O	2.65	0.49
2:B:176:LYS:NZ	2:B:179:GLN:OE1	2.40	0.49

*Continued on next page...*

Continued from previous page...

Atom-1	Atom-2	Interatomic distance (Å)	Clash overlap (Å)
2:B:93:TYR:CE2	6:B:504:DMS:H11	2.48	0.49
2:B:70:ARG:CB	7:B:764:HOH:O	2.57	0.49
7:A:546:HOH:O	2:B:275:GLN:HG3	2.12	0.48
1:A:142:ARG:HD2	1:A:178:TRP:CZ2	2.48	0.48
2:B:56:GLN:NE2	7:B:818:HOH:O	2.41	0.48
2:B:93:TYR:CE2	6:B:504:DMS:C1	2.96	0.48
1:A:307:SER:OG	1:A:312:ILE:HD11	2.13	0.48
1:A:286:ASP:HB2	7:A:521:HOH:O	2.13	0.48
1:A:96:PHE:HA	1:A:126:LEU:HD13	1.96	0.47
1:A:223:VAL:HG11	1:A:240:ARG:HB2	1.97	0.47
1:A:368:SER:C	1:A:370:GLU:HG2	2.35	0.47
2:B:291:ARG:NH2	5:B:503:FPP:O2A	2.46	0.47
2:B:408:VAL:O	2:B:412:THR:HG23	2.15	0.47
2:B:201:VAL:HG13	2:B:251:TYR:HD2	1.80	0.46
1:A:302:LEU:CD2	7:A:621:HOH:O	2.57	0.46
2:B:338:TYR:CE2	2:B:343:CYS:SG	3.08	0.46
1:A:167[A]:GLN:NE2	7:A:565:HOH:O	2.48	0.46
1:A:265:GLU:CG	7:A:554:HOH:O	2.60	0.46
1:A:353:LYS:NZ	7:A:645:HOH:O	2.47	0.46
1:A:121:ARG:HD3	7:A:460:HOH:O	2.15	0.46
2:B:351:LEU:HD23	2:B:358:ARG:HA	1.97	0.46
2:B:83:LYS:CE	7:B:830:HOH:O	2.63	0.45
2:B:151:ALA:HB3	2:B:152:PRO:CD	2.47	0.45
2:B:336:GLN:HG2	2:B:370:LEU:HD12	1.98	0.45
1:A:272:HIS:ND1	2:B:38:ASP:OD1	2.44	0.45
1:A:156:ILE:CD1	1:A:172:ARG:HH12	2.28	0.45
1:A:166:TYR:HE2	7:A:565:HOH:O	1.99	0.45
1:A:105:ALA:O	1:A:109:ARG:HG3	2.17	0.45
2:B:266:ARG:HG2	7:B:659:HOH:O	2.17	0.44
1:A:255:VAL:HG13	1:A:258:ARG:HH21	1.83	0.43
2:B:150:LEU:HD21	2:B:181:LEU:CD2	2.49	0.43
2:B:353:LYS:HB2	2:B:354:PRO:HD2	1.99	0.43
2:B:84:ARG:HG3	2:B:84:ARG:HH11	1.84	0.43
2:B:21:GLU:OE2	2:B:22:PRO:HD2	2.19	0.43
1:A:167[B]:GLN:H	1:A:167[B]:GLN:CD	2.22	0.43
1:A:297:ASN:N	1:A:297:ASN:ND2	2.67	0.42
2:B:217:ILE:HB	7:B:790:HOH:O	2.19	0.42
1:A:152:MET:O	1:A:156:ILE:CG1	2.62	0.42
2:B:308:LEU:HD13	2:B:308:LEU:HA	1.86	0.42
2:B:66:HIS:O	2:B:67:LEU:HD23	2.19	0.42
1:A:156:ILE:HD11	1:A:172:ARG:HH22	1.85	0.42

Continued on next page...

Continued from previous page...

Atom-1	Atom-2	Interatomic distance (Å)	Clash overlap (Å)
2:B:83:LYS:NZ	7:B:830:HOH:O	2.53	0.42
2:B:239:ILE:HB	2:B:252:THR:HA	2.01	0.42
2:B:53:GLU:OE2	7:B:702:HOH:O	2.21	0.42
1:A:334:LEU:CD1	1:A:363:LEU:HB3	2.50	0.41
1:A:231:VAL:HG21	1:A:266:MET:HE1	2.01	0.41
2:B:192:LEU:HD22	2:B:197:GLY:O	2.19	0.41
1:A:112:ARG:HA	1:A:140:LEU:CD2	2.50	0.41
1:A:330:LYS:O	1:A:331:GLU:C	2.58	0.41
2:B:191:PHE:O	2:B:199:VAL:HG22	2.20	0.41
2:B:350:LEU:HB2	2:B:363:THR:HA	2.02	0.41
1:A:217:ASP:HB2	7:A:555:HOH:O	2.21	0.41
2:B:353:LYS:HB2	2:B:354:PRO:CD	2.52	0.40

All (1) symmetry-related close contacts are listed below. The label for Atom-2 includes the symmetry operator and encoded unit-cell translations to be applied.

Atom-1	Atom-2	Interatomic distance (Å)	Clash overlap (Å)
1:A:147:ASP:OD2	7:B:820:HOH:O[1_556]	2.11	0.09

## 5.3 Torsion angles [i](#)

### 5.3.1 Protein backbone [i](#)

In the following table, the Percentiles column shows the percent Ramachandran outliers of the chain as a percentile score with respect to all X-ray entries followed by that with respect to entries of similar resolution.

The Analysed column shows the number of residues for which the backbone conformation was analysed, and the total number of residues.

Mol	Chain	Analysed	Favoured	Allowed	Outliers	Percentiles	
1	A	318/377 (84%)	305 (96%)	13 (4%)	0	100	100
2	B	406/427 (95%)	400 (98%)	6 (2%)	0	100	100
All	All	724/804 (90%)	705 (97%)	19 (3%)	0	100	100

There are no Ramachandran outliers to report.

### 5.3.2 Protein sidechains [i](#)

In the following table, the Percentiles column shows the percent sidechain outliers of the chain as a percentile score with respect to all X-ray entries followed by that with respect to entries of similar resolution.

The Analysed column shows the number of residues for which the sidechain conformation was analysed, and the total number of residues.

Mol	Chain	Analysed	Rotameric	Outliers	Percentiles	
1	A	295/338 (87%)	282 (96%)	13 (4%)	28	25
2	B	338/363 (93%)	330 (98%)	8 (2%)	49	51
All	All	633/701 (90%)	612 (97%)	21 (3%)	38	37

All (21) residues with a non-rotameric sidechain are listed below:

Mol	Chain	Res	Type
1	A	55	PHE
1	A	85	SER
1	A	121	ARG
1	A	156	ILE
1	A	212	GLU
1	A	214	ARG
1	A	297	ASN
1	A	302	LEU
1	A	328	ASP
1	A	346	LYS
1	A	362	SER
1	A	365	SER
1	A	369	ARG
2	B	20	SER
2	B	50	LYS
2	B	68	VAL
2	B	83	LYS
2	B	84	ARG
2	B	112	GLU
2	B	121	ILE
2	B	313	ARG

Some sidechains can be flipped to improve hydrogen bonding and reduce clashes. All (4) such sidechains are listed below:

Mol	Chain	Res	Type
1	A	201	HIS

*Continued on next page...*

*Continued from previous page...*

Mol	Chain	Res	Type
1	A	297	ASN
2	B	30	HIS
2	B	56	GLN

### 5.3.3 RNA [i](#)

There are no RNA molecules in this entry.

### 5.4 Non-standard residues in protein, DNA, RNA chains [i](#)

There are no non-standard protein/DNA/RNA residues in this entry.

### 5.5 Carbohydrates [i](#)

There are no carbohydrates in this entry.

### 5.6 Ligand geometry [i](#)

Of 4 ligands modelled in this entry, 1 is monoatomic - leaving 3 for Mogul analysis.

In the following table, the Counts columns list the number of bonds (or angles) for which Mogul statistics could be retrieved, the number of bonds (or angles) that are observed in the model and the number of bonds (or angles) that are defined in the Chemical Component Dictionary. The Link column lists molecule types, if any, to which the group is linked. The Z score for a bond length (or angle) is the number of standard deviations the observed value is removed from the expected value. A bond length (or angle) with  $|Z| > 2$  is considered an outlier worth inspection. RMSZ is the root-mean-square of all Z scores of the bond lengths (or angles).

Mol	Type	Chain	Res	Link	Bond lengths			Bond angles		
					Counts	RMSZ	# Z  > 2	Counts	RMSZ	# Z  > 2
4	7TO	B	502	3	44,50,50	2.00	5 (11%)	64,75,75	2.03	17 (26%)
6	DMS	B	504	-	3,3,3	2.65	1 (33%)	3,3,3	0.55	0
5	FPP	B	503	-	11,13,23	1.67	3 (27%)	15,19,31	1.11	1 (6%)

In the following table, the Chirals column lists the number of chiral outliers, the number of chiral centers analysed, the number of these observed in the model and the number defined in the Chemical Component Dictionary. Similar counts are reported in the Torsion and Rings columns. '-' means no outliers of that kind were identified.

Mol	Type	Chain	Res	Link	Chirals	Torsions	Rings
4	7TO	B	502	3	-	2/38/54/54	0/4/5/5
5	FPP	B	503	-	-	2/13/13/25	-

All (9) bond length outliers are listed below:

Mol	Chain	Res	Type	Atoms	Z	Observed(Å)	Ideal(Å)
4	B	502	7TO	OAF-SBT	6.35	1.50	1.43
4	B	502	7TO	OAG-SBT	6.24	1.50	1.43
4	B	502	7TO	SBT-NBP	5.08	1.71	1.63
4	B	502	7TO	CBM-NBO	-5.06	1.34	1.43
6	B	504	DMS	O-S	4.45	1.80	1.50
5	B	503	FPP	C1-C2	-2.95	1.40	1.49
4	B	502	7TO	OBE-SBS	-2.55	1.51	1.57
5	B	503	FPP	C2-C3	2.42	1.39	1.32
5	B	503	FPP	PB-O2B	2.41	1.64	1.54

All (18) bond angle outliers are listed below:

Mol	Chain	Res	Type	Atoms	Z	Observed(°)	Ideal(°)
4	B	502	7TO	OAG-SBT-OAF	-6.70	108.67	119.52
4	B	502	7TO	CBK-SBT-NBP	5.67	117.45	107.36
4	B	502	7TO	CAZ-CBJ-CAX	-5.55	112.05	119.17
4	B	502	7TO	OBE-SBS-CBR	4.13	109.93	99.16
4	B	502	7TO	CBG-CAY-CBN	3.94	120.79	113.23
4	B	502	7TO	NBC-CAW-NBQ	-3.52	107.04	112.26
5	B	503	FPP	PA-O3A-PB	-2.95	122.69	132.83
4	B	502	7TO	CAA-OBDB-CBH	-2.92	111.18	117.51
4	B	502	7TO	CAS-CBK-SBT	2.90	122.81	119.76
4	B	502	7TO	CAZ-CBJ-CBM	2.87	126.79	122.40
4	B	502	7TO	OAE-SBS-OAD	-2.80	107.19	116.98
4	B	502	7TO	CBJ-CBM-NBO	2.78	125.68	123.82
4	B	502	7TO	CAX-CBJ-CBM	2.41	121.16	118.95
4	B	502	7TO	CBB-CBN-NBP	2.30	116.74	112.15
4	B	502	7TO	CBB-NBO-CBM	2.29	122.11	116.90
4	B	502	7TO	CAO-CBI-CAP	-2.15	116.86	120.18
4	B	502	7TO	CAT-CBK-SBT	-2.10	117.55	119.76
4	B	502	7TO	CAU-CBM-NBO	-2.04	114.99	118.37

There are no chirality outliers.

All (4) torsion outliers are listed below:



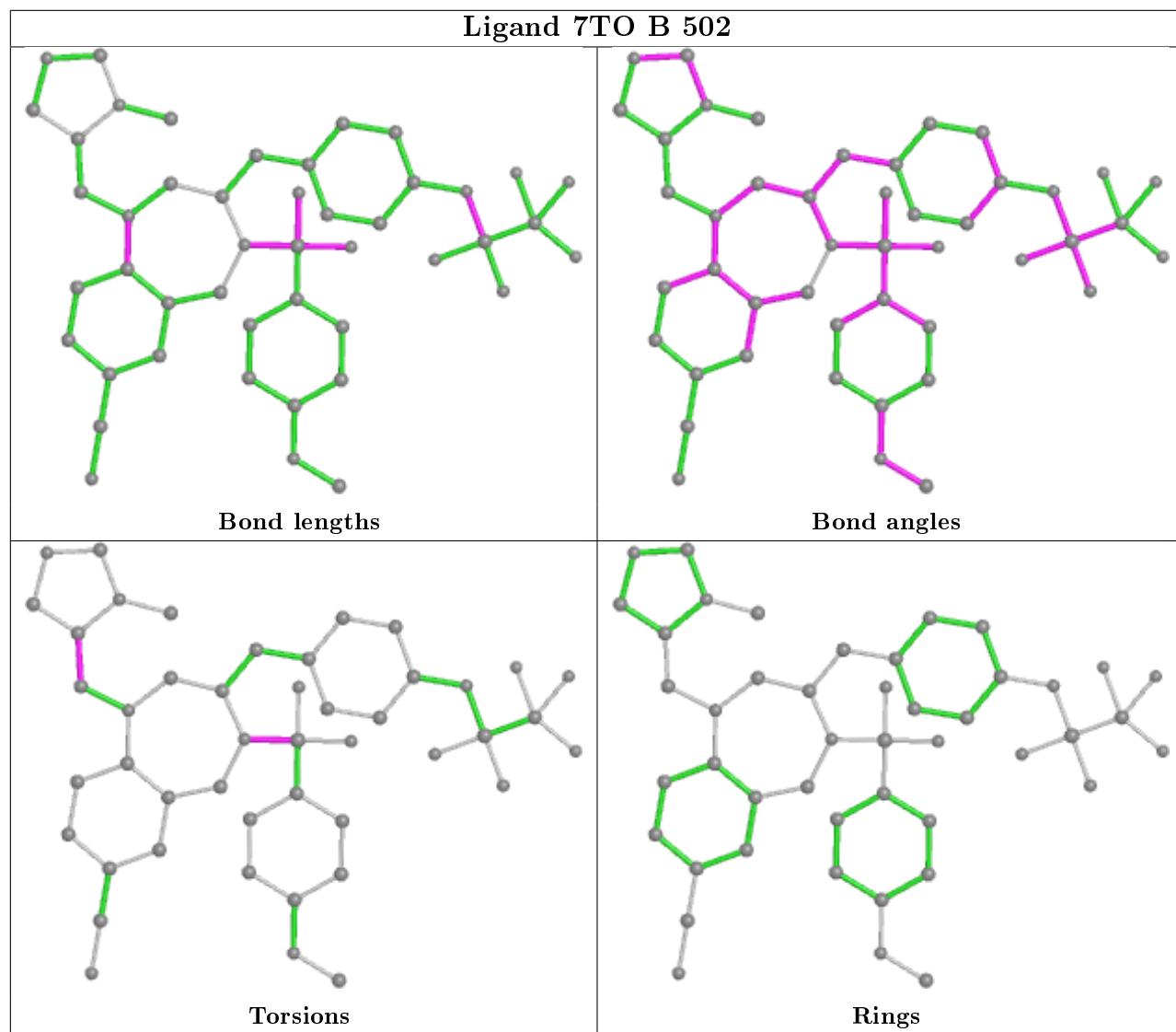
Mol	Chain	Res	Type	Atoms
4	B	502	7TO	CAZ-NBP-SBT-OAG
4	B	502	7TO	NBO-CBA-CBL-NBQ
5	B	503	FPP	PB-O3A-PA-O2A
5	B	503	FPP	O1-C1-C2-C3

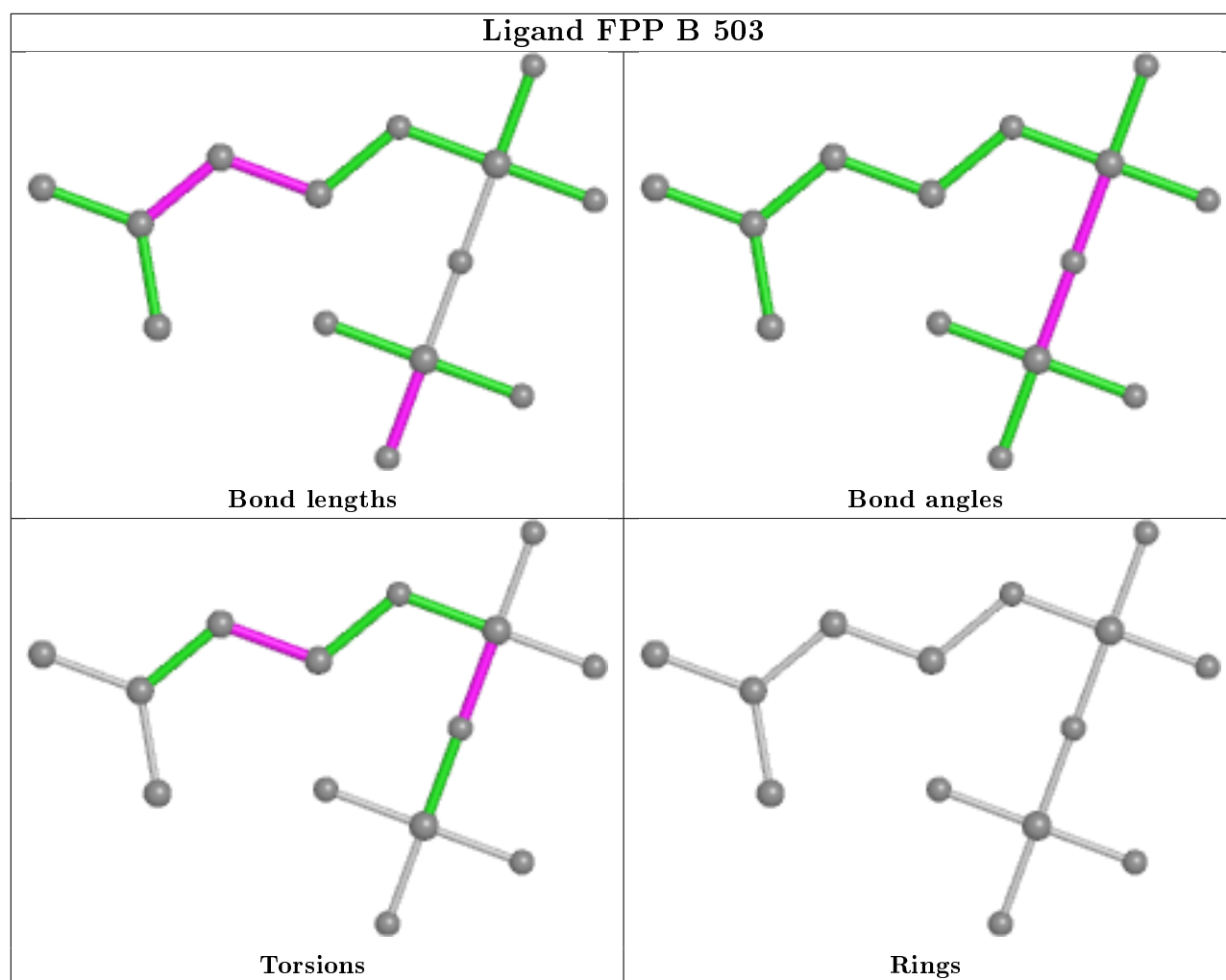
There are no ring outliers.

3 monomers are involved in 9 short contacts:

Mol	Chain	Res	Type	Clashes	Symm-Clashes
4	B	502	7TO	2	0
6	B	504	DMS	5	0
5	B	503	FPP	2	0

The following is a two-dimensional graphical depiction of Mogul quality analysis of bond lengths, bond angles, torsion angles, and ring geometry for all instances of the Ligand of Interest. In addition, ligands with molecular weight > 250 and outliers as shown on the validation Tables will also be included. For torsion angles, if less than 5% of the Mogul distribution of torsion angles is within 10 degrees of the torsion angle in question, then that torsion angle is considered an outlier. Any bond that is central to one or more torsion angles identified as an outlier by Mogul will be highlighted in the graph. For rings, the root-mean-square deviation (RMSD) between the ring in question and similar rings identified by Mogul is calculated over all ring torsion angles. If the average RMSD is greater than 60 degrees and the minimal RMSD between the ring in question and any Mogul-identified rings is also greater than 60 degrees, then that ring is considered an outlier. The outliers are highlighted in purple. The color gray indicates Mogul did not find sufficient equivalents in the CSD to analyse the geometry.





## 5.7 Other polymers [i](#)

There are no such residues in this entry.

## 5.8 Polymer linkage issues [i](#)

There are no chain breaks in this entry.

## 6 Fit of model and data

### 6.1 Protein, DNA and RNA chains

In the following table, the column labelled ‘#RSRZ> 2’ contains the number (and percentage) of RSRZ outliers, followed by percent RSRZ outliers for the chain as percentile scores relative to all X-ray entries and entries of similar resolution. The OWAB column contains the minimum, median, 95<sup>th</sup> percentile and maximum values of the occupancy-weighted average B-factor per residue. The column labelled ‘Q< 0.9’ lists the number of (and percentage) of residues with an average occupancy less than 0.9.

Mol	Chain	Analysed	<RSRZ>	#RSRZ>2	OWAB(Å <sup>2</sup> )	Q<0.9
1	A	317/377 (84%)	0.04	13 (4%) 37 46	24, 48, 88, 104	0
2	B	406/427 (95%)	0.04	11 (2%) 54 63	23, 42, 76, 96	0
All	All	723/804 (89%)	0.04	24 (3%) 46 55	23, 45, 83, 104	0

All (24) RSRZ outliers are listed below:

Mol	Chain	Res	Type	RSRZ
2	B	19	TRP	6.1
2	B	20	SER	5.3
1	A	369	ARG	4.9
1	A	54	GLY	4.6
2	B	18	VAL	4.2
1	A	326	GLN	3.4
1	A	55	PHE	3.3
2	B	423	PHE	3.3
1	A	334	LEU	3.0
1	A	214	ARG	2.8
2	B	70	ARG	2.7
2	B	355	GLY	2.7
2	B	65	ASN	2.5
1	A	328	ASP	2.5
1	A	367	HIS	2.5
1	A	302	LEU	2.5
2	B	380	ALA	2.5
2	B	409	ILE	2.4
1	A	370	GLU	2.4
1	A	304	PRO	2.3
2	B	420	VAL	2.3
2	B	170	ASN	2.2
1	A	331	GLU	2.2
1	A	142	ARG	2.1

## 6.2 Non-standard residues in protein, DNA, RNA chains [i](#)

There are no non-standard protein/DNA/RNA residues in this entry.

## 6.3 Carbohydrates [i](#)

There are no carbohydrates in this entry.

## 6.4 Ligands [i](#)

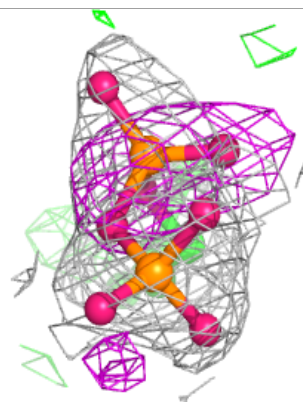
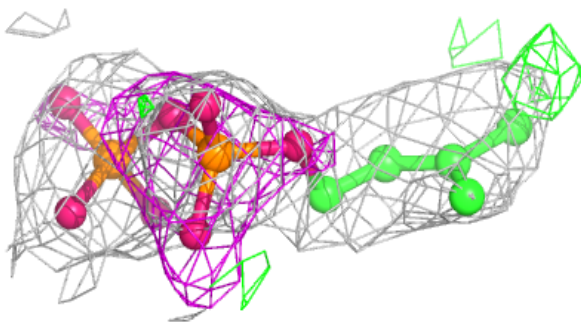
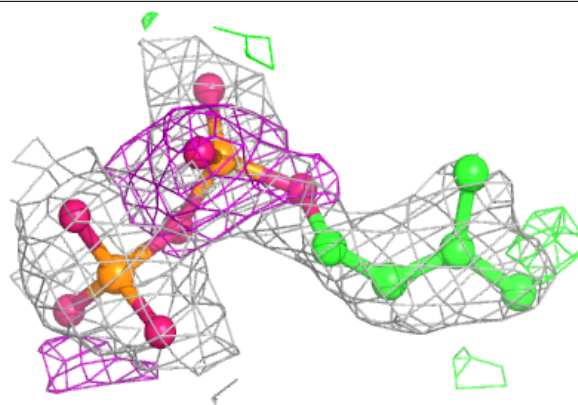
In the following table, the Atoms column lists the number of modelled atoms in the group and the number defined in the chemical component dictionary. The B-factors column lists the minimum, median, 95<sup>th</sup> percentile and maximum values of B factors of atoms in the group. The column labelled 'Q< 0.9' lists the number of atoms with occupancy less than 0.9.

Mol	Type	Chain	Res	Atoms	RSCC	RSR	B-factors( $\text{\AA}^2$ )	Q<0.9
5	FPP	B	503	14/24	0.79	0.24	49,62,79,80	0
6	DMS	B	504	4/4	0.89	0.20	78,78,78,78	0
4	7TO	B	502	46/46	0.94	0.12	32,59,95,100	0
3	ZN	B	501	1/1	1.00	0.07	31,31,31,31	0

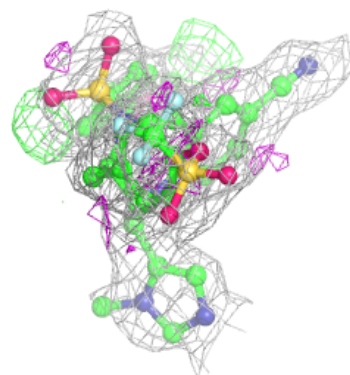
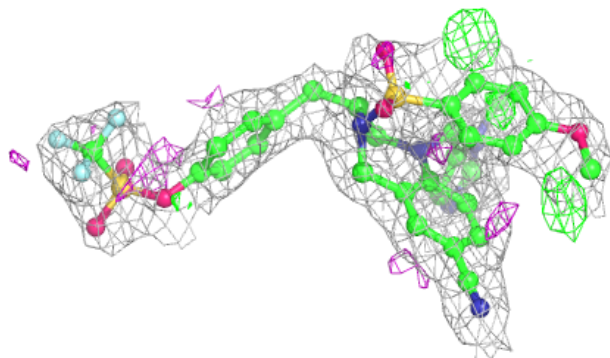
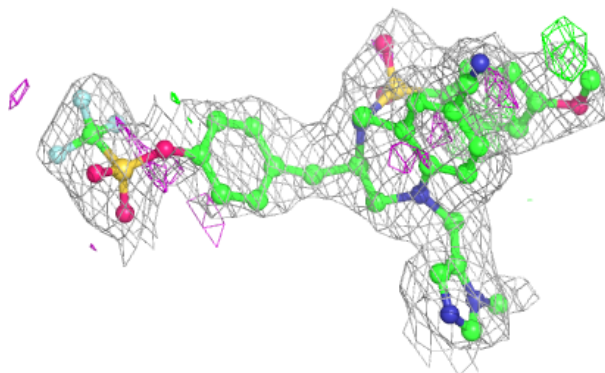
The following is a graphical depiction of the model fit to experimental electron density of all instances of the Ligand of Interest. In addition, ligands with molecular weight > 250 and outliers as shown on the geometry validation Tables will also be included. Each fit is shown from different orientation to approximate a three-dimensional view.

**Electron density around FPP B 503:**

$2mF_o-DF_c$  (at 0.7 rmsd) in gray  
 $mF_o-DF_c$  (at 3 rmsd) in purple (negative)  
and green (positive)

**Electron density around 7TO B 502:**

$2mF_o-DF_c$  (at 0.7 rmsd) in gray  
 $mF_o-DF_c$  (at 3 rmsd) in purple (negative)  
and green (positive)



## 6.5 Other polymers

There are no such residues in this entry.