



# Full wwPDB X-ray Structure Validation Report ⓘ

May 13, 2020 – 12:11 am BST

PDB ID : 2GTN  
Title : Mutated MAP kinase P38 (Mus Musculus) in complex with Inhibitor PG-951717  
Authors : Walter, R.L.; Mekel, M.J.; Evdokimov, A.G.; Pokross, M.E.; Sabat, M.  
Deposited on : 2006-04-28  
Resolution : 1.80 Å(reported)

This is a Full wwPDB X-ray Structure Validation Report for a publicly released PDB entry.

We welcome your comments at [validation@mail.wwpdb.org](mailto:validation@mail.wwpdb.org)

A user guide is available at

<https://www.wwpdb.org/validation/2017/XrayValidationReportHelp>

with specific help available everywhere you see the ⓘ symbol.

---

The following versions of software and data (see [references ⓘ](#)) were used in the production of this report:

MolProbity : 4.02b-467  
Mogul : 1.8.5 (274361), CSD as541be (2020)  
Xtriage (Phenix) : 1.13  
EDS : 2.11  
buster-report : 1.1.7 (2018)  
Percentile statistics : 20191225.v01 (using entries in the PDB archive December 25th 2019)  
Refmac : 5.8.0158  
CCP4 : 7.0.044 (Gargrove)  
Ideal geometry (proteins) : Engh & Huber (2001)  
Ideal geometry (DNA, RNA) : Parkinson et al. (1996)  
Validation Pipeline (wwPDB-VP) : 2.11

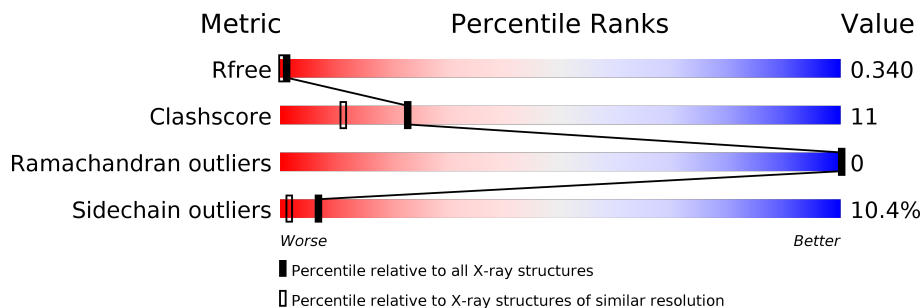
# 1 Overall quality at a glance

The following experimental techniques were used to determine the structure:

*X-RAY DIFFRACTION*


The reported resolution of this entry is 1.80 Å.

Percentile scores (ranging between 0-100) for global validation metrics of the entry are shown in the following graphic. The table shows the number of entries on which the scores are based.



Metric	Whole archive (#Entries)	Similar resolution (#Entries, resolution range(Å))
$R_{free}$	130704	5950 (1.80-1.80)
Clashscore	141614	6793 (1.80-1.80)
Ramachandran outliers	138981	6697 (1.80-1.80)
Sidechain outliers	138945	6696 (1.80-1.80)

The table below summarises the geometric issues observed across the polymeric chains and their fit to the electron density. The red, orange, yellow and green segments on the lower bar indicate the fraction of residues that contain outliers for  $\geq 3$ , 2, 1 and 0 types of geometric quality criteria respectively. A grey segment represents the fraction of residues that are not modelled. The numeric value for each fraction is indicated below the corresponding segment, with a dot representing fractions  $\leq 5\%$ .

Mol	Chain	Length	Quality of chain
1	A	348	 71%                      21%                      . . .

## 2 Entry composition [i](#)

There are 4 unique types of molecules in this entry. The entry contains 2972 atoms, of which 0 are hydrogens and 0 are deuteriums.

In the tables below, the ZeroOcc column contains the number of atoms modelled with zero occupancy, the AltConf column contains the number of residues with at least one atom in alternate conformation and the Trace column contains the number of residues modelled with at most 2 atoms.

- Molecule 1 is a protein called Mitogen-activated protein kinase 14.

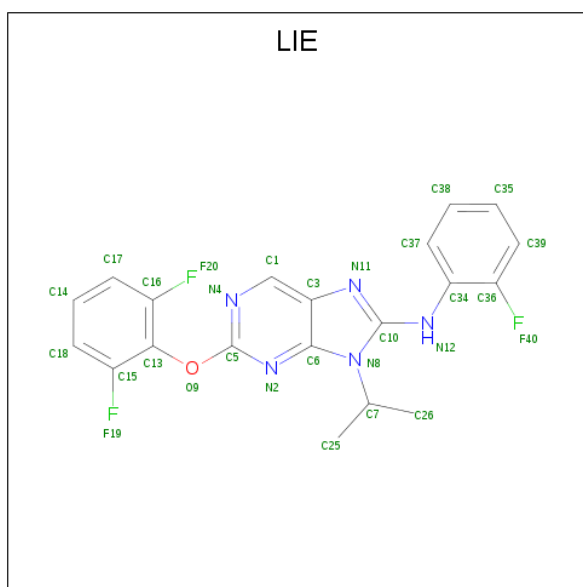
Mol	Chain	Residues	Atoms					ZeroOcc	AltConf	Trace
			Total	C	N	O	S			
1	A	337	2717	1743	466	496	12	0	0	0

- Molecule 2 is SULFATE ION (three-letter code: SO4) (formula: O<sub>4</sub>S).



Mol	Chain	Residues	Atoms			ZeroOcc	AltConf
			Total	O	S		
2	A	1	5	4	1	0	0

- Molecule 3 is 2-(2,6-DIFLUOROPHENOXY)-N-(2-FLUOROPHENYL)-9-ISOPROPYL-9H-PURIN-8-AMINE (three-letter code: LIE) (formula: C<sub>20</sub>H<sub>16</sub>F<sub>3</sub>N<sub>5</sub>O).



Mol	Chain	Residues	Atoms					ZeroOcc	AltConf
			Total	C	F	N	O		
3	A	1	29	20	3	5	1	0	0

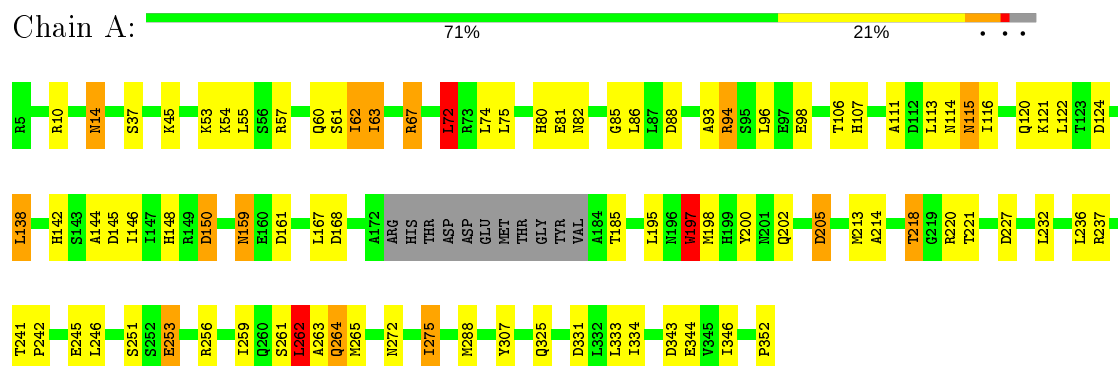
- Molecule 4 is water.

Mol	Chain	Residues	Atoms		ZeroOcc	AltConf
4	A	221	Total	O	0	0
			221	221		

### 3 Residue-property plots [i](#)

These plots are drawn for all protein, RNA and DNA chains in the entry. The first graphic for a chain summarises the proportions of the various outlier classes displayed in the second graphic. The second graphic shows the sequence view annotated by issues in geometry. Residues are color-coded according to the number of geometric quality criteria for which they contain at least one outlier: green = 0, yellow = 1, orange = 2 and red = 3 or more. Stretches of 2 or more consecutive residues without any outlier are shown as a green connector. Residues present in the sample, but not in the model, are shown in grey.

- Molecule 1: Mitogen-activated protein kinase 14



## 4 Data and refinement statistics

Property	Value	Source
Space group	P 21 21 21	Depositor
Cell constants a, b, c, $\alpha$ , $\beta$ , $\gamma$	64.99Å 74.55Å 78.03Å 90.00° 90.00° 90.00°	Depositor
Resolution (Å)	50.00 – 1.80 41.49 – 1.82	Depositor EDS
% Data completeness (in resolution range)	96.8 (50.00-1.80) 95.3 (41.49-1.82)	Depositor EDS
$R_{merge}$	0.06	Depositor
$R_{sym}$	(Not available)	Depositor
$\langle I/\sigma(I) \rangle$ <sup>1</sup>	1.88 (at 1.82Å)	Xtrriage
Refinement program	REFMAC	Depositor
R, $R_{free}$	0.198 , 0.248 0.319 , 0.340	Depositor DCC
$R_{free}$ test set	1678 reflections (5.04%)	wwPDB-VP
Wilson B-factor (Å <sup>2</sup> )	30.4	Xtrriage
Anisotropy	0.337	Xtrriage
Bulk solvent $k_{sol}$ (e/Å <sup>3</sup> ), $B_{sol}$ (Å <sup>2</sup> )	0.36 , 72.3	EDS
L-test for twinning <sup>2</sup>	$\langle  L  \rangle = 0.49$ , $\langle L^2 \rangle = 0.32$	Xtrriage
Estimated twinning fraction	0.017 for -h,l,k	Xtrriage
$F_o, F_c$ correlation	0.90	EDS
Total number of atoms	2972	wwPDB-VP
Average B, all atoms (Å <sup>2</sup> )	35.0	wwPDB-VP

Xtrriage's analysis on translational NCS is as follows: *The largest off-origin peak in the Patterson function is 5.77% of the height of the origin peak. No significant pseudotranslation is detected.*

<sup>1</sup> Intensities estimated from amplitudes.

<sup>2</sup> Theoretical values of  $\langle |L| \rangle$ ,  $\langle L^2 \rangle$  for acentric reflections are 0.5, 0.333 respectively for untwinned datasets, and 0.375, 0.2 for perfectly twinned datasets.

## 5 Model quality [i](#)

### 5.1 Standard geometry [i](#)

Bond lengths and bond angles in the following residue types are not validated in this section: LIE, SO4

The Z score for a bond length (or angle) is the number of standard deviations the observed value is removed from the expected value. A bond length (or angle) with  $|Z| > 5$  is considered an outlier worth inspection. RMSZ is the root-mean-square of all Z scores of the bond lengths (or angles).

Mol	Chain	Bond lengths		Bond angles	
		RMSZ	# Z  >5	RMSZ	# Z  >5
1	A	0.87	3/2781 (0.1%)	0.98	12/3775 (0.3%)

Chiral center outliers are detected by calculating the chiral volume of a chiral center and verifying if the center is modelled as a planar moiety or with the opposite hand. A planarity outlier is detected by checking planarity of atoms in a peptide group, atoms in a mainchain group or atoms of a sidechain that are expected to be planar.

Mol	Chain	#Chirality outliers	#Planarity outliers
1	A	0	1

All (3) bond length outliers are listed below:

Mol	Chain	Res	Type	Atoms	Z	Observed(Å)	Ideal(Å)
1	A	262	LEU	N-CA	-7.82	1.30	1.46
1	A	288	MET	SD-CE	-5.52	1.47	1.77
1	A	197	TRP	CB-CG	5.13	1.59	1.50

All (12) bond angle outliers are listed below:

Mol	Chain	Res	Type	Atoms	Z	Observed(°)	Ideal(°)
1	A	168	ASP	CB-CG-OD2	10.81	128.03	118.30
1	A	262	LEU	N-CA-C	-8.93	86.90	111.00
1	A	88	ASP	CB-CG-OD2	6.54	124.19	118.30
1	A	331	ASP	CB-CG-OD1	6.23	123.91	118.30
1	A	124	ASP	CB-CG-OD2	6.21	123.89	118.30
1	A	227	ASP	CB-CG-OD2	5.88	123.59	118.30
1	A	205	ASP	CB-CG-OD2	5.73	123.45	118.30
1	A	150	ASP	CB-CG-OD2	5.30	123.07	118.30
1	A	343	ASP	CB-CG-OD2	5.23	123.00	118.30
1	A	67	ARG	NE-CZ-NH1	5.15	122.87	120.30

*Continued on next page...*

Continued from previous page...

Mol	Chain	Res	Type	Atoms	Z	Observed(°)	Ideal(°)
1	A	72	LEU	CB-CG-CD2	5.08	119.64	111.00
1	A	138	LEU	CB-CG-CD1	5.03	119.56	111.00

There are no chirality outliers.

All (1) planarity outliers are listed below:

Mol	Chain	Res	Type	Group
1	A	263	ALA	Peptide

## 5.2 Too-close contacts

In the following table, the Non-H and H(model) columns list the number of non-hydrogen atoms and hydrogen atoms in the chain respectively. The H(added) column lists the number of hydrogen atoms added and optimized by MolProbity. The Clashes column lists the number of clashes within the asymmetric unit, whereas Symm-Clashes lists symmetry related clashes.

Mol	Chain	Non-H	H(model)	H(added)	Clashes	Symm-Clashes
1	A	2717	0	2715	61	0
2	A	5	0	0	1	0
3	A	29	0	16	2	0
4	A	221	0	0	23	0
All	All	2972	0	2731	63	0

The all-atom clashscore is defined as the number of clashes found per 1000 atoms (including hydrogen atoms). The all-atom clashscore for this structure is 11.

All (63) close contacts within the same asymmetric unit are listed below, sorted by their clash magnitude.

Atom-1	Atom-2	Interatomic distance (Å)	Clash overlap (Å)
1:A:111:ALA:HB1	1:A:115:ASN:HD21	1.03	1.18
1:A:111:ALA:HB1	1:A:115:ASN:ND2	1.87	0.89
1:A:80:HIS:HD2	1:A:82:ASN:H	1.21	0.88
1:A:53:LYS:HG2	4:A:556:HOH:O	1.74	0.86
1:A:107:HIS:ND1	2:A:353:SO4:O4	2.13	0.80
1:A:81:GLU:HG2	4:A:396:HOH:O	1.84	0.77
1:A:98:GLU:HB2	4:A:507:HOH:O	1.85	0.77
1:A:63:ILE:HD11	1:A:67:ARG:NH2	2.03	0.74
1:A:218:THR:HG22	1:A:220:ARG:H	1.56	0.70
1:A:75:LEU:HB3	1:A:86:LEU:HG	1.73	0.70

Continued on next page...



*Continued from previous page...*

Atom-1	Atom-2	Interatomic distance (Å)	Clash overlap (Å)
1:A:115:ASN:C	1:A:115:ASN:HD22	1.95	0.69
1:A:272:ASN:O	1:A:275:ILE:HG12	1.92	0.69
1:A:218:THR:HG21	4:A:377:HOH:O	1.92	0.69
3:A:354:LIE:H35	4:A:565:HOH:O	1.94	0.67
1:A:86:LEU:HD23	4:A:565:HOH:O	1.94	0.67
1:A:148:HIS:HD2	1:A:150:ASP:H	1.42	0.67
1:A:57:ARG:HD2	1:A:60:GLN:HE22	1.60	0.66
1:A:242:PRO:HB3	1:A:246:LEU:HD23	1.77	0.66
1:A:261:SER:C	1:A:262:LEU:O	2.29	0.64
1:A:81:GLU:CG	4:A:396:HOH:O	2.43	0.64
1:A:55:LEU:HD23	4:A:556:HOH:O	1.97	0.63
1:A:55:LEU:HA	4:A:556:HOH:O	1.98	0.62
1:A:106:THR:HG23	4:A:565:HOH:O	2.00	0.62
1:A:197:TRP:HD1	1:A:200:TYR:CE1	2.18	0.61
1:A:80:HIS:CD2	1:A:82:ASN:H	2.11	0.60
1:A:94:ARG:HG2	4:A:575:HOH:O	2.01	0.60
1:A:214:ALA:O	1:A:218:THR:HB	2.00	0.60
1:A:115:ASN:ND2	1:A:115:ASN:O	2.33	0.60
1:A:148:HIS:HE1	1:A:167:LEU:O	1.85	0.58
1:A:352:PRO:O	4:A:523:HOH:O	2.17	0.58
1:A:142:HIS:HD2	4:A:360:HOH:O	1.87	0.56
1:A:159:ASN:C	1:A:159:ASN:HD22	2.09	0.56
1:A:218:THR:CG2	1:A:220:ARG:H	2.20	0.55
1:A:57:ARG:HD2	1:A:60:GLN:NE2	2.23	0.54
1:A:325:GLN:NE2	4:A:438:HOH:O	2.40	0.53
1:A:232:LEU:HD21	1:A:259:ILE:HG12	1.94	0.50
1:A:93:ALA:HA	4:A:507:HOH:O	2.11	0.50
1:A:144:ALA:HB3	1:A:146:ILE:HD12	1.92	0.50
1:A:145:ASP:OD1	4:A:554:HOH:O	2.20	0.50
1:A:14:ASN:OD1	1:A:14:ASN:N	2.45	0.50
1:A:80:HIS:HE1	4:A:363:HOH:O	1.94	0.50
1:A:85:GLY:O	1:A:106:THR:HG22	2.12	0.50
1:A:142:HIS:HE1	1:A:205:ASP:OD1	1.94	0.50
1:A:344:GLU:C	4:A:569:HOH:O	2.50	0.49
1:A:197:TRP:HD1	1:A:200:TYR:CZ	2.30	0.49
1:A:236:LEU:HD12	1:A:262:LEU:HD13	1.93	0.49
1:A:264:GLN:HG3	1:A:265:MET:N	2.28	0.48
1:A:237:ARG:HD2	4:A:548:HOH:O	2.13	0.48
1:A:72:LEU:HD11	4:A:569:HOH:O	2.14	0.48
1:A:61:SER:HA	1:A:334:ILE:HD11	1.97	0.47
1:A:62:ILE:HG22	1:A:334:ILE:HG13	1.98	0.46

*Continued on next page...*

Continued from previous page...

Atom-1	Atom-2	Interatomic distance (Å)	Clash overlap (Å)
1:A:242:PRO:HG3	1:A:259:ILE:HG21	1.98	0.46
1:A:253:GLU:CD	1:A:256:ARG:HH22	2.19	0.45
1:A:198:MET:SD	1:A:251:SER:OG	2.74	0.44
1:A:150:ASP:OD2	1:A:185:THR:HG23	2.17	0.43
1:A:272:ASN:O	1:A:275:ILE:CG1	2.66	0.43
1:A:116:ILE:O	1:A:116:ILE:CG2	2.67	0.43
1:A:253:GLU:HG2	1:A:253:GLU:H	1.64	0.43
1:A:213:MET:HE1	1:A:307:TYR:CE2	2.53	0.43
1:A:202:GLN:NE2	4:A:554:HOH:O	2.51	0.42
1:A:94:ARG:HB3	1:A:94:ARG:CZ	2.49	0.42
1:A:54:LYS:C	4:A:556:HOH:O	2.57	0.42
3:A:354:LIE:C35	4:A:565:HOH:O	2.60	0.41

There are no symmetry-related clashes.

## 5.3 Torsion angles [i](#)

### 5.3.1 Protein backbone [i](#)

In the following table, the Percentiles column shows the percent Ramachandran outliers of the chain as a percentile score with respect to all X-ray entries followed by that with respect to entries of similar resolution.

The Analysed column shows the number of residues for which the backbone conformation was analysed, and the total number of residues.

Mol	Chain	Analysed	Favoured	Allowed	Outliers	Percentiles
1	A	333/348 (96%)	324 (97%)	9 (3%)	0	100   100

There are no Ramachandran outliers to report.

### 5.3.2 Protein sidechains [i](#)

In the following table, the Percentiles column shows the percent sidechain outliers of the chain as a percentile score with respect to all X-ray entries followed by that with respect to entries of similar resolution.

The Analysed column shows the number of residues for which the sidechain conformation was analysed, and the total number of residues.

Mol	Chain	Analysed	Rotameric	Outliers	Percentiles
1	A	297/307 (97%)	266 (90%)	31 (10%)	<b>7</b> <b>1</b>

All (31) residues with a non-rotameric sidechain are listed below:

Mol	Chain	Res	Type
1	A	10	ARG
1	A	14	ASN
1	A	37	SER
1	A	45	LYS
1	A	62	ILE
1	A	63	ILE
1	A	72	LEU
1	A	74	LEU
1	A	94	ARG
1	A	96	LEU
1	A	113	LEU
1	A	114	ASN
1	A	115	ASN
1	A	120	GLN
1	A	121	LYS
1	A	122	LEU
1	A	138	LEU
1	A	159	ASN
1	A	161	ASP
1	A	195	LEU
1	A	197	TRP
1	A	218	THR
1	A	221	THR
1	A	241	THR
1	A	245	GLU
1	A	253	GLU
1	A	262	LEU
1	A	264	GLN
1	A	275	ILE
1	A	333	LEU
1	A	346	ILE

Some sidechains can be flipped to improve hydrogen bonding and reduce clashes. All (12) such sidechains are listed below:

Mol	Chain	Res	Type
1	A	11	GLN
1	A	60	GLN

*Continued on next page...*

*Continued from previous page...*

Mol	Chain	Res	Type
1	A	64	HIS
1	A	80	HIS
1	A	114	ASN
1	A	115	ASN
1	A	120	GLN
1	A	142	HIS
1	A	148	HIS
1	A	159	ASN
1	A	228	HIS
1	A	257	ASN

### 5.3.3 RNA [i](#)

There are no RNA molecules in this entry.

### 5.4 Non-standard residues in protein, DNA, RNA chains [i](#)

There are no non-standard protein/DNA/RNA residues in this entry.

### 5.5 Carbohydrates [i](#)

There are no carbohydrates in this entry.

### 5.6 Ligand geometry [i](#)

2 ligands are modelled in this entry.

In the following table, the Counts columns list the number of bonds (or angles) for which Mogul statistics could be retrieved, the number of bonds (or angles) that are observed in the model and the number of bonds (or angles) that are defined in the Chemical Component Dictionary. The Link column lists molecule types, if any, to which the group is linked. The Z score for a bond length (or angle) is the number of standard deviations the observed value is removed from the expected value. A bond length (or angle) with  $|Z| > 2$  is considered an outlier worth inspection. RMSZ is the root-mean-square of all Z scores of the bond lengths (or angles).

Mol	Type	Chain	Res	Link	Bond lengths			Bond angles		
					Counts	RMSZ	# Z  > 2	Counts	RMSZ	# Z  > 2
2	SO4	A	353	-	4,4,4	0.45	0	6,6,6	0.60	0
3	LIE	A	354	-	28,32,32	1.00	1 (3%)	32,46,46	2.07	8 (25%)

In the following table, the Chirals column lists the number of chiral outliers, the number of chiral centers analysed, the number of these observed in the model and the number defined in the Chemical Component Dictionary. Similar counts are reported in the Torsion and Rings columns. '-' means no outliers of that kind were identified.

Mol	Type	Chain	Res	Link	Chirals	Torsions	Rings
3	LIE	A	354	-	-	3/10/12/12	0/4/4/4

All (1) bond length outliers are listed below:

Mol	Chain	Res	Type	Atoms	Z	Observed(Å)	Ideal(Å)
3	A	354	LIE	C5-N4	2.77	1.36	1.32

All (8) bond angle outliers are listed below:

Mol	Chain	Res	Type	Atoms	Z	Observed(°)	Ideal(°)
3	A	354	LIE	N4-C5-N2	-6.45	123.31	128.43
3	A	354	LIE	C10-N11-C3	-5.33	99.36	106.73
3	A	354	LIE	C37-C34-C36	4.00	121.21	117.17
3	A	354	LIE	C34-N12-C10	-2.79	120.34	128.05
3	A	354	LIE	F19-C15-C18	2.51	124.19	118.59
3	A	354	LIE	F40-C36-C34	2.33	120.43	117.50
3	A	354	LIE	C39-C36-C34	-2.07	120.88	123.24
3	A	354	LIE	C1-N4-C5	2.02	117.42	114.97

There are no chirality outliers.

All (3) torsion outliers are listed below:

Mol	Chain	Res	Type	Atoms
3	A	354	LIE	C37-C34-N12-C10
3	A	354	LIE	C26-C7-N8-C6
3	A	354	LIE	C36-C34-N12-C10

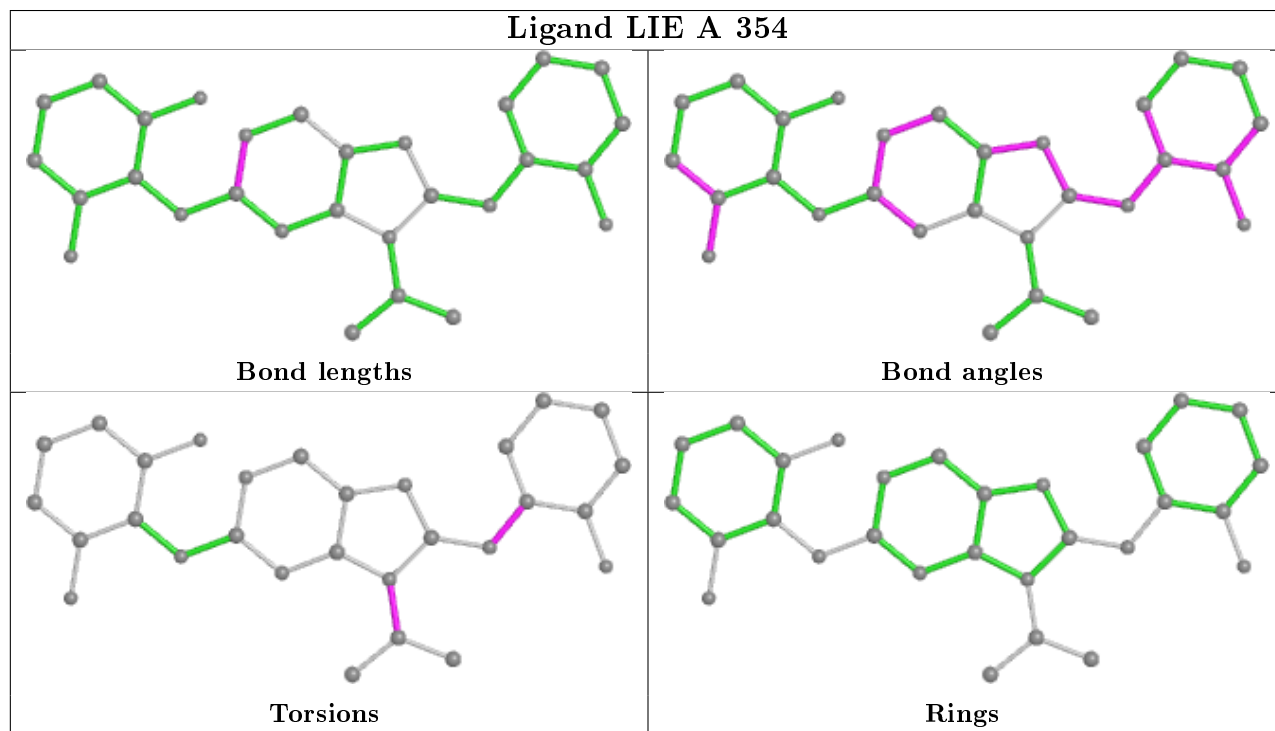
There are no ring outliers.

2 monomers are involved in 3 short contacts:

Mol	Chain	Res	Type	Clashes	Symm-Clashes
2	A	353	SO4	1	0
3	A	354	LIE	2	0

The following is a two-dimensional graphical depiction of Mogul quality analysis of bond lengths, bond angles, torsion angles, and ring geometry for all instances of the Ligand of Interest. In addition, ligands with molecular weight > 250 and outliers as shown on the validation Tables will

also be included. For torsion angles, if less than 5% of the Mogul distribution of torsion angles is within 10 degrees of the torsion angle in question, then that torsion angle is considered an outlier. Any bond that is central to one or more torsion angles identified as an outlier by Mogul will be highlighted in the graph. For rings, the root-mean-square deviation (RMSD) between the ring in question and similar rings identified by Mogul is calculated over all ring torsion angles. If the average RMSD is greater than 60 degrees and the minimal RMSD between the ring in question and any Mogul-identified rings is also greater than 60 degrees, then that ring is considered an outlier. The outliers are highlighted in purple. The color gray indicates Mogul did not find sufficient equivalents in the CSD to analyse the geometry.



## 5.7 Other polymers [i](#)

There are no such residues in this entry.

## 5.8 Polymer linkage issues [i](#)

There are no chain breaks in this entry.

## 6 Fit of model and data [i](#)

### 6.1 Protein, DNA and RNA chains [i](#)

Unable to reproduce the depositors R factor - this section is therefore empty.

### 6.2 Non-standard residues in protein, DNA, RNA chains [i](#)

Unable to reproduce the depositors R factor - this section is therefore empty.

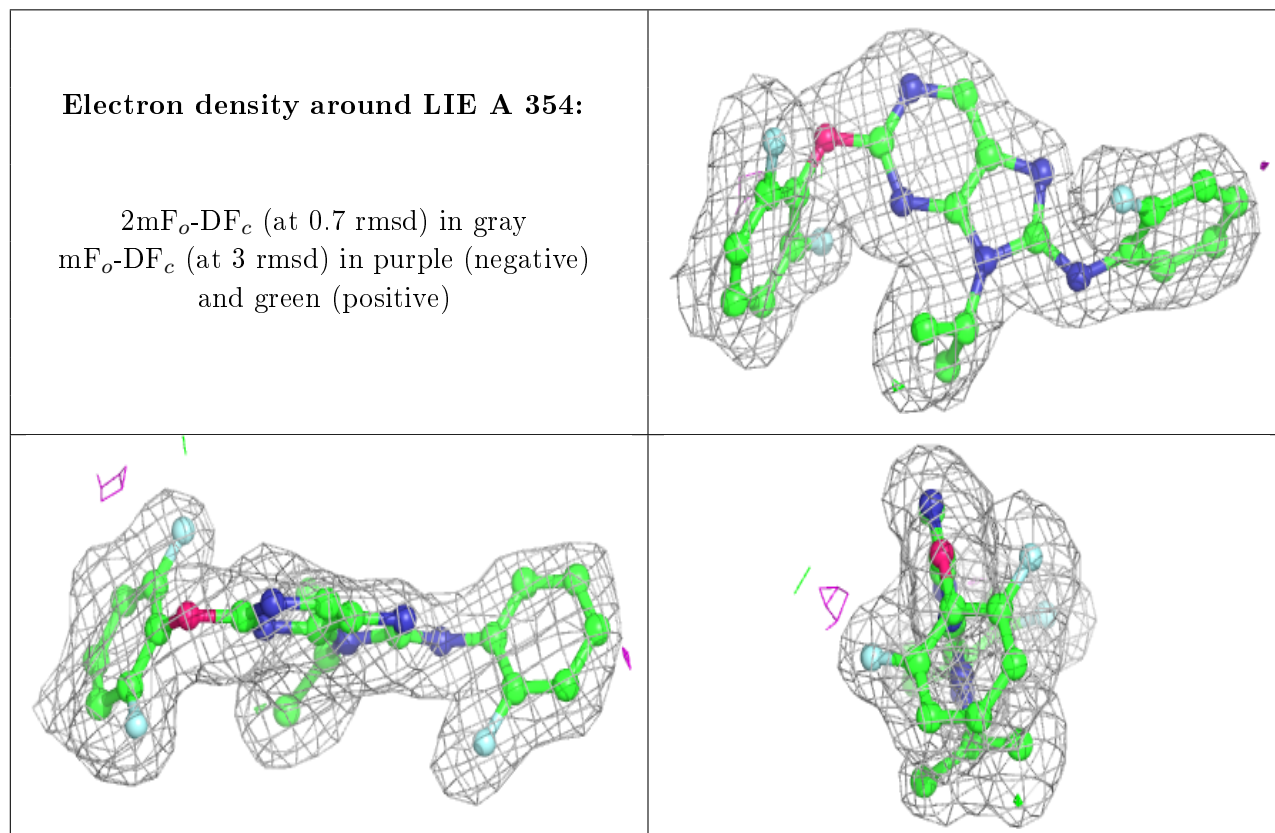
### 6.3 Carbohydrates [i](#)

Unable to reproduce the depositors R factor - this section is therefore empty.

### 6.4 Ligands [i](#)

Unable to reproduce the depositors R factor - this section is therefore empty.

The following is a graphical depiction of the model fit to experimental electron density of all instances of the Ligand of Interest. In addition, ligands with molecular weight > 250 and outliers as shown on the geometry validation Tables will also be included. Each fit is shown from different orientation to approximate a three-dimensional view.



## 6.5 Other polymers

Unable to reproduce the depositors R factor - this section is therefore empty.