



wwPDB EM Validation Summary Report ⓘ

Nov 20, 2022 – 02:27 am GMT

PDB ID : 6GIY
EMDB ID : EMD-0008
Title : The baseplate complex from the type VI secretion system
Authors : Rapisarda, C.; Fronzes, R.
Deposited on : 2018-05-15
Resolution : 4.30 Å(reported)

This is a wwPDB EM Validation Summary Report for a publicly released PDB entry.

We welcome your comments at validation@mail.wwpdb.org

A user guide is available at

<https://www.wwpdb.org/validation/2017/EMValidationReportHelp>

with specific help available everywhere you see the ⓘ symbol.

The types of validation reports are described at

<http://www.wwpdb.org/validation/2017/FAQs#types>.

The following versions of software and data (see [references ⓘ](#)) were used in the production of this report:

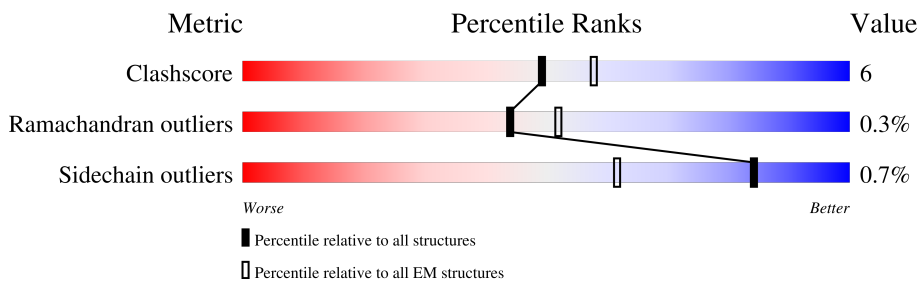
EMDB validation analysis : 0.0.1.dev43
MolProbity : 4.02b-467
Percentile statistics : 20191225.v01 (using entries in the PDB archive December 25th 2019)
MapQ : 1.9.9
Ideal geometry (proteins) : Engh & Huber (2001)
Ideal geometry (DNA, RNA) : Parkinson et al. (1996)
Validation Pipeline (wwPDB-VP) : 2.31.2

1 Overall quality at a glance

The following experimental techniques were used to determine the structure:
ELECTRON MICROSCOPY

The reported resolution of this entry is 4.30 Å.

Percentile scores (ranging between 0-100) for global validation metrics of the entry are shown in the following graphic. The table shows the number of entries on which the scores are based.




Metric	Whole archive (#Entries)	EM structures (#Entries)
Clashscore	158937	4297
Ramachandran outliers	154571	4023
Sidechain outliers	154315	3826

The table below summarises the geometric issues observed across the polymeric chains and their fit to the map. The red, orange, yellow and green segments of the bar indicate the fraction of residues that contain outliers for ≥ 3 , 2, 1 and 0 types of geometric quality criteria respectively. A grey segment represents the fraction of residues that are not modelled. The numeric value for each fraction is indicated below the corresponding segment, with a dot representing fractions $\leq 5\%$. The upper red bar (where present) indicates the fraction of residues that have poor fit to the EM map (all-atom inclusion $< 40\%$). The numeric value is given above the bar.

Mol	Chain	Length	Quality of chain
1	A	587	
1	B	587	
2	C	366	
3	D	444	
3	E	444	
3	F	444	
3	G	444	
3	H	444	

Continued on next page...

Continued from previous page...

Mol	Chain	Length	Quality of chain
3	I	444	 <p>A horizontal bar chart representing the quality of chain. The bar is divided into three segments: a small red segment at the beginning, a large green segment labeled '59%', a small yellow segment labeled '10%', and a grey segment labeled '30%'.</p>

2 Entry composition [i](#)

There are 3 unique types of molecules in this entry. The entry contains 28969 atoms, of which 0 are hydrogens and 0 are deuteriums.

In the tables below, the AltConf column contains the number of residues with at least one atom in alternate conformation and the Trace column contains the number of residues modelled with at most 2 atoms.

- Molecule 1 is a protein called TssF.

Mol	Chain	Residues	Atoms					AltConf	Trace
			Total	C	N	O	S		
1	A	584	Total	C	N	O	S	0	0
			4655	2961	825	844	25		
1	B	583	Total	C	N	O	S	0	0
			4651	2959	824	843	25		

- Molecule 2 is a protein called TssG.

Mol	Chain	Residues	Atoms					AltConf	Trace
			Total	C	N	O	S		
2	C	350	Total	C	N	O	S	0	0
			2737	1739	503	484	11		

- Molecule 3 is a protein called TssK.

Mol	Chain	Residues	Atoms					AltConf	Trace
			Total	C	N	O	S		
3	D	311	Total	C	N	O	S	0	0
			2473	1566	447	449	11		
3	E	311	Total	C	N	O	S	0	0
			2479	1568	449	451	11		
3	F	311	Total	C	N	O	S	0	0
			2482	1570	451	450	11		
3	G	444	Total	C	N	O	S	0	0
			3509	2225	631	637	16		
3	H	444	Total	C	N	O	S	0	0
			3498	2216	629	637	16		
3	I	311	Total	C	N	O	S	0	0
			2485	1571	452	451	11		

There are 12 discrepancies between the modelled and reference sequences:

Chain	Residue	Modelled	Actual	Comment	Reference
D	194	SER	GLY	conflict	UNP B7LG64
D	202	LEU	ALA	conflict	UNP B7LG64
E	194	SER	GLY	conflict	UNP B7LG64

Continued on next page...

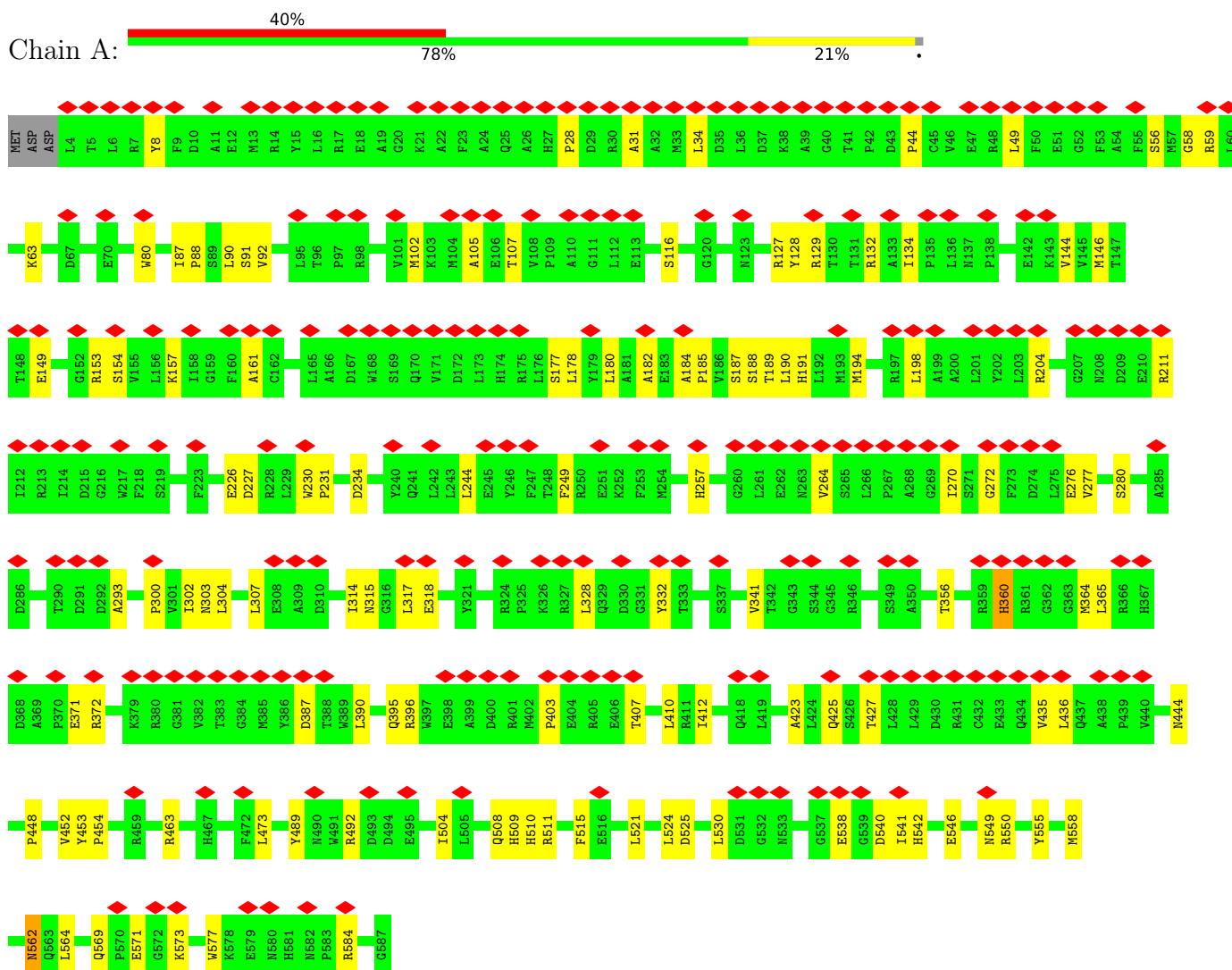
Continued from previous page...

Chain	Residue	Modelled	Actual	Comment	Reference
E	202	LEU	ALA	conflict	UNP B7LG64
F	194	SER	GLY	conflict	UNP B7LG64
F	202	LEU	ALA	conflict	UNP B7LG64
G	194	SER	GLY	conflict	UNP B7LG64
G	202	LEU	ALA	conflict	UNP B7LG64
H	194	SER	GLY	conflict	UNP B7LG64
H	202	LEU	ALA	conflict	UNP B7LG64
I	194	SER	GLY	conflict	UNP B7LG64
I	202	LEU	ALA	conflict	UNP B7LG64

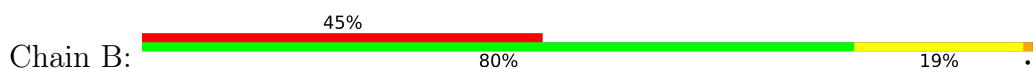
3 Residue-property plots [i](#)

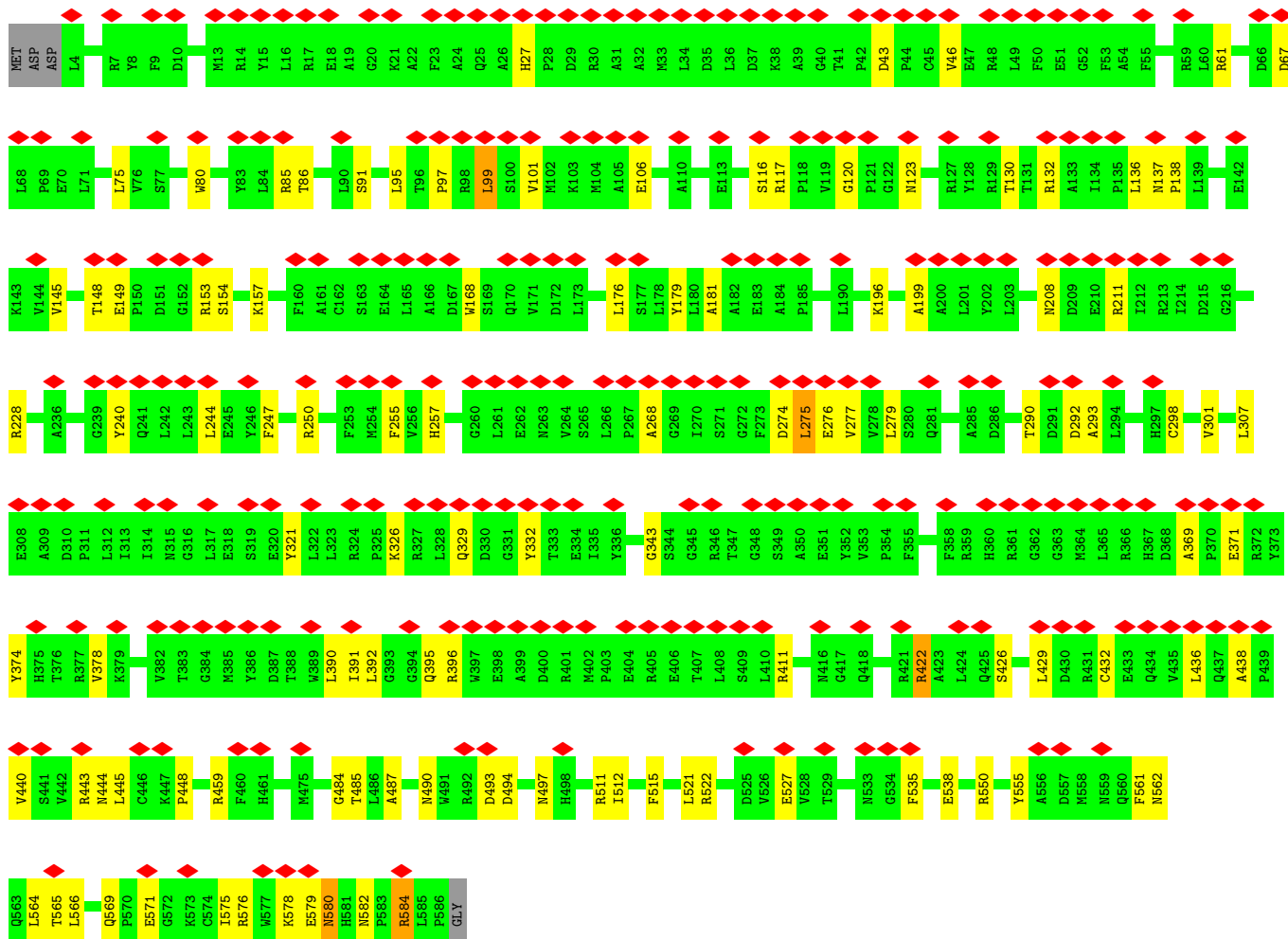
These plots are drawn for all protein, RNA, DNA and oligosaccharide chains in the entry. The first graphic for a chain summarises the proportions of the various outlier classes displayed in the second graphic. The second graphic shows the sequence view annotated by issues in geometry and atom inclusion in map density. Residues are color-coded according to the number of geometric quality criteria for which they contain at least one outlier: green = 0, yellow = 1, orange = 2 and red = 3 or more. A red diamond above a residue indicates a poor fit to the EM map for this residue (all-atom inclusion < 40%). Stretches of 2 or more consecutive residues without any outlier are shown as a green connector. Residues present in the sample, but not in the model, are shown in grey.

- Molecule 1: TssF

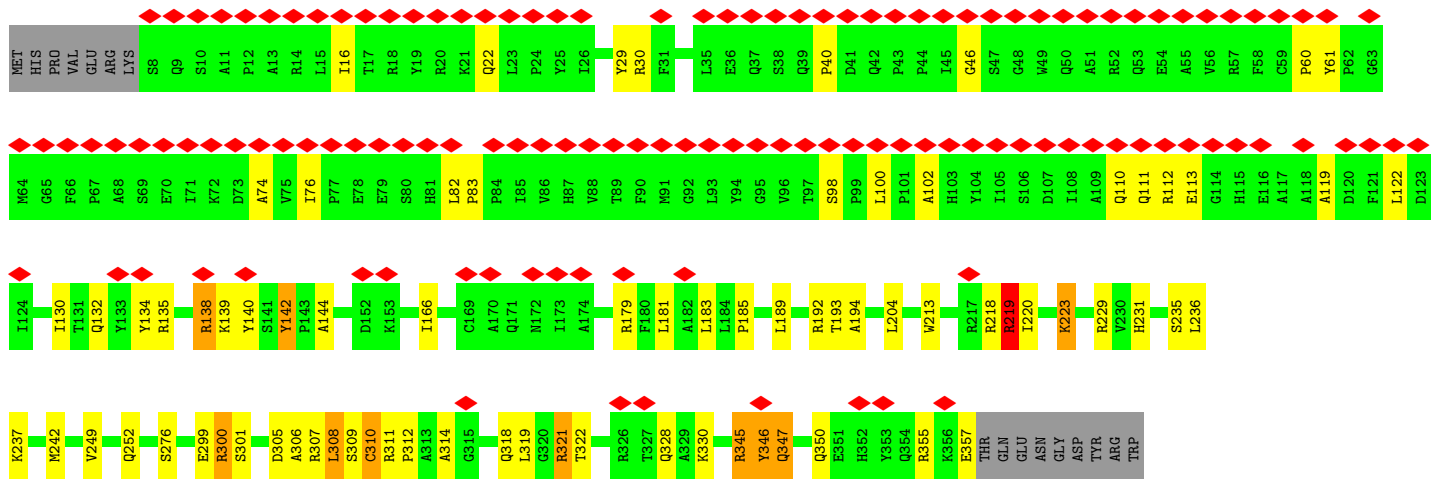
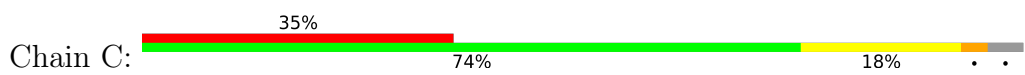


- Molecule 1: TssF



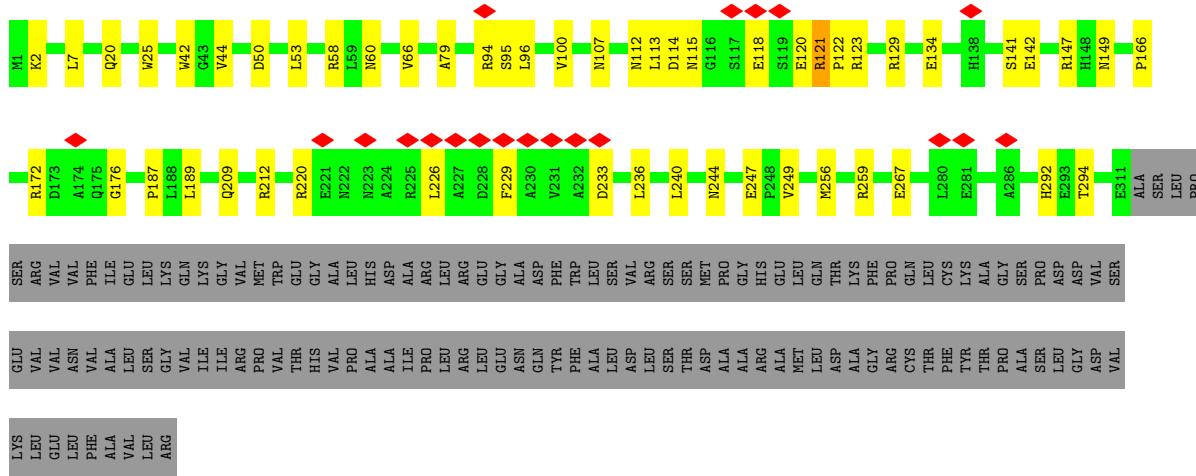


• Molecule 2: TssG

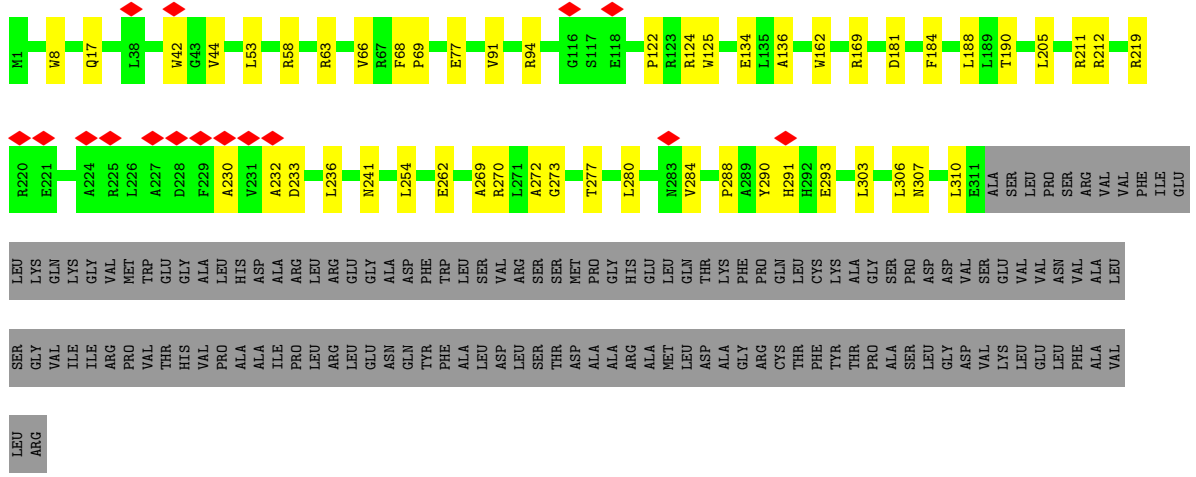


• Molecule 3: TssK

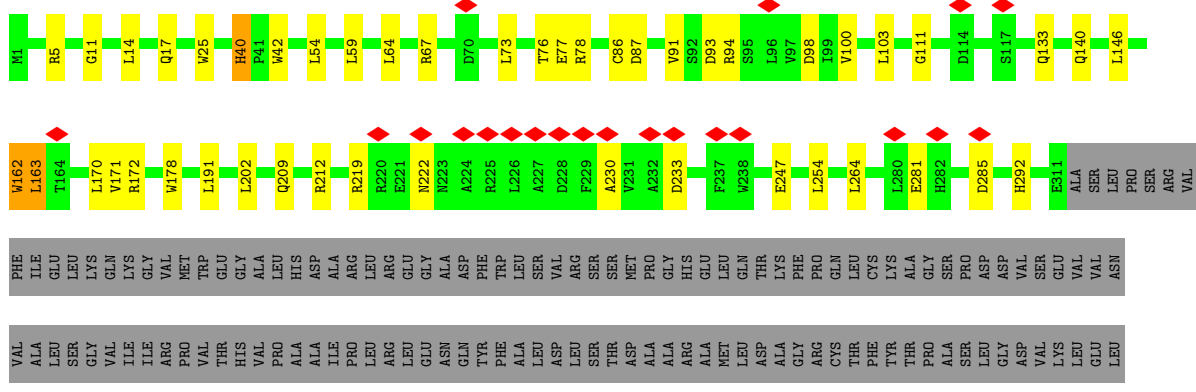




• Molecule 3: TssK

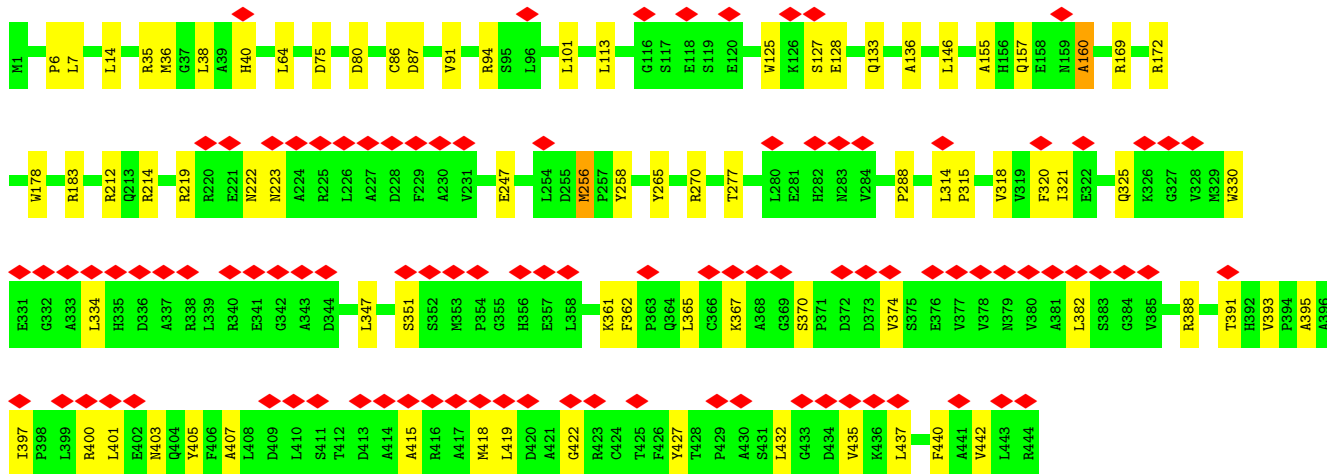
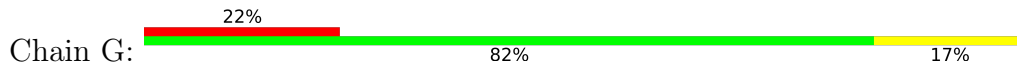


• Molecule 3: TssK

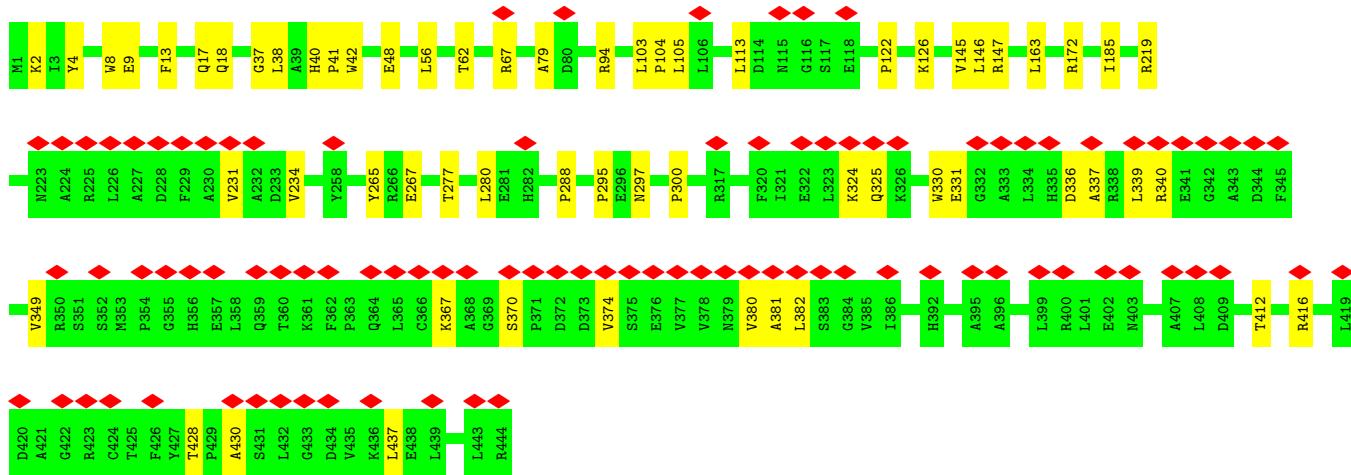
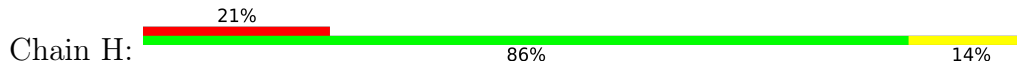


PHE
ALA
VAL
LEU
ARG

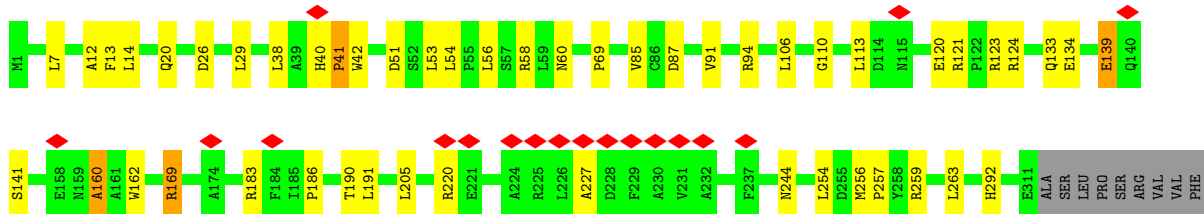
• Molecule 3: TssK



• Molecule 3: TssK



• Molecule 3: TssK



ILE
LEU
SER
GLY
VAL
GLN
LYS
GLY
VAL
MET
PRO
THR
GLU
GLY
ALA
LEU
HIS
ASP
ALA
ALA
ARG
ARG
LEU
ARG
LEU
GLY
GLY
ASN
ALA
GLN
ASP
PHE
TRP
LEU
SER
VAL
VAL
ARG
SER
SER
SER
MET
ALA
PRO
GLY
HIS
ARG
GLU
LEU
GLN
THR
PHE
LYS
ALA
CYS
LEU
GLN
SER
PRO
ASP
ASP
VAL
SER
GLY
VAL
VAL
VAL
VAL
ASN
VAL

ALA
LEU
SER
GLY
VAL
ILE
ILE
ARG
PRO
VAL
THR
HIS
VAL
VAL
PRO
ALA
ALA
ILE
PRO
LEU
LEU
ARG
LEU
GLY
GLY
ASN
GLN
TYR
PHE
ALA
LEU
SER
ASP
VAL
SER
SER
THR
SER
THR
ASP
ALA
ALA
ALA
ARG
ALA
ALA
MET
LEU
LEU
ASP
ALA
GLY
PHE
LYS
ARG
CYS
THR
THR
PHE
TYR
THR
PRO
GLY
ALA
SER
SER
LEU
GLY
ASP
VAL
SER
LYS
LEU
LEU
GLU
LEU
LEU
PHE

ALA
VAL
LEU
ARG

4 Experimental information

Property	Value	Source
EM reconstruction method	SINGLE PARTICLE	Depositor
Imposed symmetry	POINT, C1	Depositor
Number of particles used	32504	Depositor
Resolution determination method	FSC 0.143 CUT-OFF	Depositor
CTF correction method	PHASE FLIPPING AND AMPLITUDE CORRECTION	Depositor
Microscope	FEI TITAN KRIOS	Depositor
Voltage (kV)	300	Depositor
Electron dose ($e^-/\text{\AA}^2$)	1.5	Depositor
Minimum defocus (nm)	400	Depositor
Maximum defocus (nm)	3000	Depositor
Magnification	130000	Depositor
Image detector	GATAN K2 SUMMIT (4k x 4k)	Depositor
Maximum map value	30.160	Depositor
Minimum map value	-11.852	Depositor
Average map value	0.000	Depositor
Map value standard deviation	1.000	Depositor
Recommended contour level	6.5	Depositor
Map size (Å)	495.0, 495.0, 495.0	wwPDB
Map dimensions	450, 450, 450	wwPDB
Map angles (°)	90.0, 90.0, 90.0	wwPDB
Pixel spacing (Å)	1.1, 1.1, 1.1	Depositor

5 Model quality [i](#)

5.1 Standard geometry [i](#)

The Z score for a bond length (or angle) is the number of standard deviations the observed value is removed from the expected value. A bond length (or angle) with $|Z| > 5$ is considered an outlier worth inspection. RMSZ is the root-mean-square of all Z scores of the bond lengths (or angles).

Mol	Chain	Bond lengths		Bond angles	
		RMSZ	# Z >5	RMSZ	# Z >5
1	A	0.32	0/4769	0.62	1/6476 (0.0%)
1	B	0.33	0/4765	0.63	1/6471 (0.0%)
2	C	0.36	0/2808	0.74	3/3822 (0.1%)
3	D	0.37	0/2531	0.58	0/3453
3	E	0.39	0/2537	0.60	0/3461
3	F	0.38	0/2540	0.58	0/3464
3	G	0.35	0/3590	0.61	0/4892
3	H	0.38	0/3578	0.61	0/4876
3	I	0.35	0/2543	0.61	1/3468 (0.0%)
All	All	0.36	0/29661	0.62	6/40383 (0.0%)

Chiral center outliers are detected by calculating the chiral volume of a chiral center and verifying if the center is modelled as a planar moiety or with the opposite hand. A planarity outlier is detected by checking planarity of atoms in a peptide group, atoms in a mainchain group or atoms of a sidechain that are expected to be planar.

Mol	Chain	#Chirality outliers	#Planarity outliers
1	A	0	9
1	B	0	8
2	C	0	14
3	E	0	1
3	F	0	2
3	G	0	5
3	H	0	1
3	I	0	6
All	All	0	46

There are no bond length outliers.

The worst 5 of 6 bond angle outliers are listed below:

Mol	Chain	Res	Type	Atoms	Z	Observed(°)	Ideal(°)
2	C	345	ARG	C-N-CA	6.04	136.80	121.70

Continued on next page...

Continued from previous page...

Mol	Chain	Res	Type	Atoms	Z	Observed(°)	Ideal(°)
1	B	99	LEU	CA-CB-CG	5.76	128.56	115.30
3	I	14	LEU	CA-CB-CG	5.72	128.46	115.30
1	A	34	LEU	CA-CB-CG	5.14	127.11	115.30
2	C	346	TYR	CB-CA-C	-5.06	100.27	110.40

There are no chirality outliers.

5 of 46 planarity outliers are listed below:

Mol	Chain	Res	Type	Group
1	A	178	LEU	Peptide
1	A	276	GLU	Peptide
1	A	360	HIS	Peptide
1	A	390	LEU	Peptide
1	A	435	VAL	Peptide

5.2 Too-close contacts [i](#)

In the following table, the Non-H and H(model) columns list the number of non-hydrogen atoms and hydrogen atoms in the chain respectively. The H(added) column lists the number of hydrogen atoms added and optimized by MolProbity. The Clashes column lists the number of clashes within the asymmetric unit, whereas Symm-Clashes lists symmetry-related clashes.

Mol	Chain	Non-H	H(model)	H(added)	Clashes	Symm-Clashes
1	A	4655	0	4627	73	0
1	B	4651	0	4624	66	0
2	C	2737	0	2732	48	0
3	D	2473	0	2462	37	0
3	E	2479	0	2470	32	0
3	F	2482	0	2477	31	0
3	G	3509	0	3519	47	0
3	H	3498	0	3496	39	0
3	I	2485	0	2481	32	0
All	All	28969	0	28888	355	0

The all-atom clashscore is defined as the number of clashes found per 1000 atoms (including hydrogen atoms). The all-atom clashscore for this structure is 6.

The worst 5 of 355 close contacts within the same asymmetric unit are listed below, sorted by their clash magnitude.

Atom-1	Atom-2	Interatomic distance (Å)	Clash overlap (Å)
1:B:569:GLN:HG3	1:B:571:GLU:H	1.49	0.78
3:H:428:THR:HG22	3:H:430:ALA:H	1.56	0.70
3:D:120:GLU:OE1	3:D:121:ARG:NH1	2.28	0.66
1:A:555:TYR:O	2:C:192:ARG:NH1	2.29	0.66
3:G:146:LEU:HB3	3:I:7:LEU:HD12	1.78	0.65

There are no symmetry-related clashes.

5.3 Torsion angles [i](#)

5.3.1 Protein backbone [i](#)

In the following table, the Percentiles column shows the percent Ramachandran outliers of the chain as a percentile score with respect to all PDB entries followed by that with respect to all EM entries.

The Analysed column shows the number of residues for which the backbone conformation was analysed, and the total number of residues.

Mol	Chain	Analysed	Favoured	Allowed	Outliers	Percentiles	
1	A	582/587 (99%)	502 (86%)	78 (13%)	2 (0%)	41	76
1	B	581/587 (99%)	493 (85%)	87 (15%)	1 (0%)	47	81
2	C	348/366 (95%)	275 (79%)	70 (20%)	3 (1%)	17	56
3	D	309/444 (70%)	279 (90%)	30 (10%)	0	100	100
3	E	309/444 (70%)	279 (90%)	30 (10%)	0	100	100
3	F	309/444 (70%)	274 (89%)	35 (11%)	0	100	100
3	G	442/444 (100%)	393 (89%)	47 (11%)	2 (0%)	29	68
3	H	442/444 (100%)	394 (89%)	48 (11%)	0	100	100
3	I	309/444 (70%)	272 (88%)	35 (11%)	2 (1%)	25	65
All	All	3631/4204 (86%)	3161 (87%)	460 (13%)	10 (0%)	44	76

5 of 10 Ramachandran outliers are listed below:

Mol	Chain	Res	Type
2	C	306	ALA
3	G	36	MET
3	I	13	PHE
2	C	347	GLN
1	A	436	LEU

5.3.2 Protein sidechains [i](#)

In the following table, the Percentiles column shows the percent sidechain outliers of the chain as a percentile score with respect to all PDB entries followed by that with respect to all EM entries.

The Analysed column shows the number of residues for which the sidechain conformation was analysed, and the total number of residues.

Mol	Chain	Analysed	Rotameric	Outliers	Percentiles	
1	A	501/504 (99%)	498 (99%)	3 (1%)	86	92
1	B	501/504 (99%)	499 (100%)	2 (0%)	91	94
2	C	287/310 (93%)	278 (97%)	9 (3%)	40	63
3	D	268/381 (70%)	266 (99%)	2 (1%)	84	90
3	E	270/381 (71%)	268 (99%)	2 (1%)	84	90
3	F	270/381 (71%)	267 (99%)	3 (1%)	73	85
3	G	381/381 (100%)	380 (100%)	1 (0%)	92	95
3	H	378/381 (99%)	378 (100%)	0	100	100
3	I	271/381 (71%)	270 (100%)	1 (0%)	91	94
All	All	3127/3604 (87%)	3104 (99%)	23 (1%)	84	90

5 of 23 residues with a non-rotameric sidechain are listed below:

Mol	Chain	Res	Type
3	D	121	ARG
3	E	241	ASN
3	E	68	PHE
3	F	14	LEU
2	C	223	LYS

Sometimes sidechains can be flipped to improve hydrogen bonding and reduce clashes. 5 of 29 such sidechains are listed below:

Mol	Chain	Res	Type
2	C	214	HIS
3	I	244	ASN
3	D	148	HIS
3	G	403	ASN
2	C	350	GLN

5.3.3 RNA [i](#)

There are no RNA molecules in this entry.

5.4 Non-standard residues in protein, DNA, RNA chains [i](#)

There are no non-standard protein/DNA/RNA residues in this entry.

5.5 Carbohydrates [i](#)

There are no monosaccharides in this entry.

5.6 Ligand geometry [i](#)

There are no ligands in this entry.

5.7 Other polymers [i](#)

There are no such residues in this entry.

5.8 Polymer linkage issues [i](#)

There are no chain breaks in this entry.

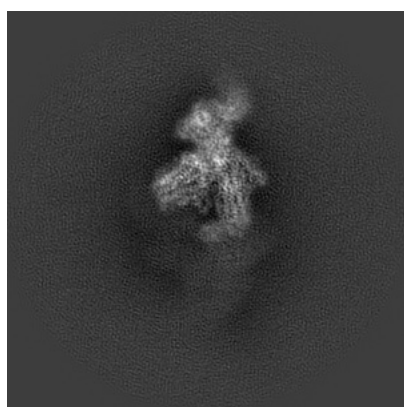
6 Map visualisation [i](#)

This section contains visualisations of the EMDB entry EMD-0008. These allow visual inspection of the internal detail of the map and identification of artifacts.

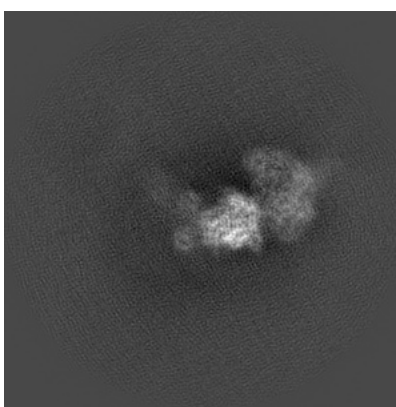
No raw map or half-maps were deposited for this entry and therefore no images, graphs, etc. pertaining to the raw map can be shown.

6.1 Orthogonal projections [i](#)

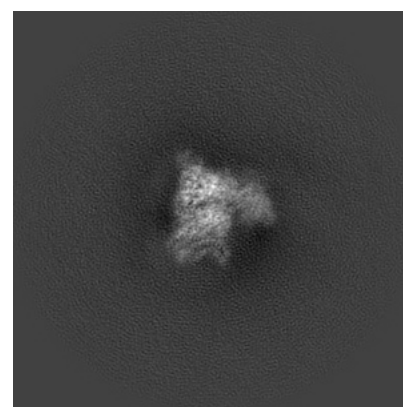
6.1.1 Primary map



X



Y

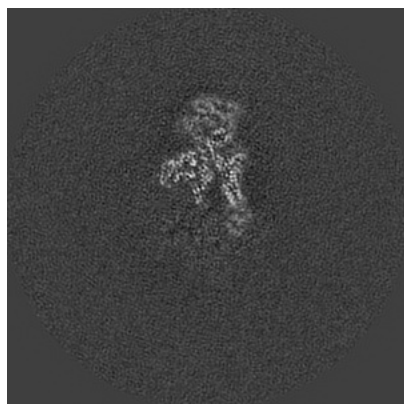


Z

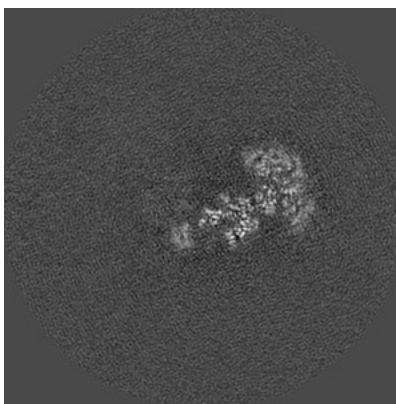
The images above show the map projected in three orthogonal directions.

6.2 Central slices [i](#)

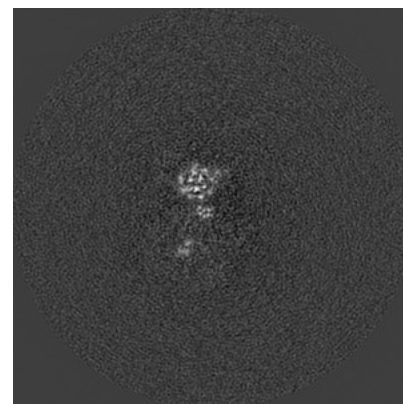
6.2.1 Primary map



X Index: 225



Y Index: 225

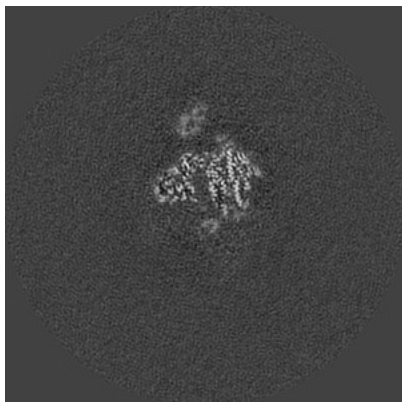


Z Index: 225

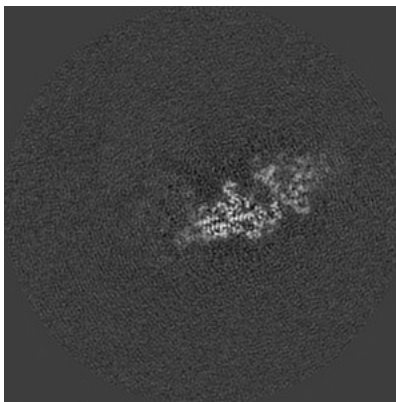
The images above show central slices of the map in three orthogonal directions.

6.3 Largest variance slices [i](#)

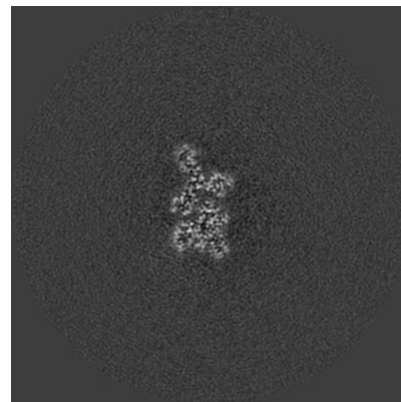
6.3.1 Primary map



X Index: 204



Y Index: 246



Z Index: 261

The images above show the largest variance slices of the map in three orthogonal directions.

6.4 Orthogonal surface views [i](#)

6.4.1 Primary map



X



Y



Z

The images above show the 3D surface view of the map at the recommended contour level 6.5. These images, in conjunction with the slice images, may facilitate assessment of whether an appropriate contour level has been provided.

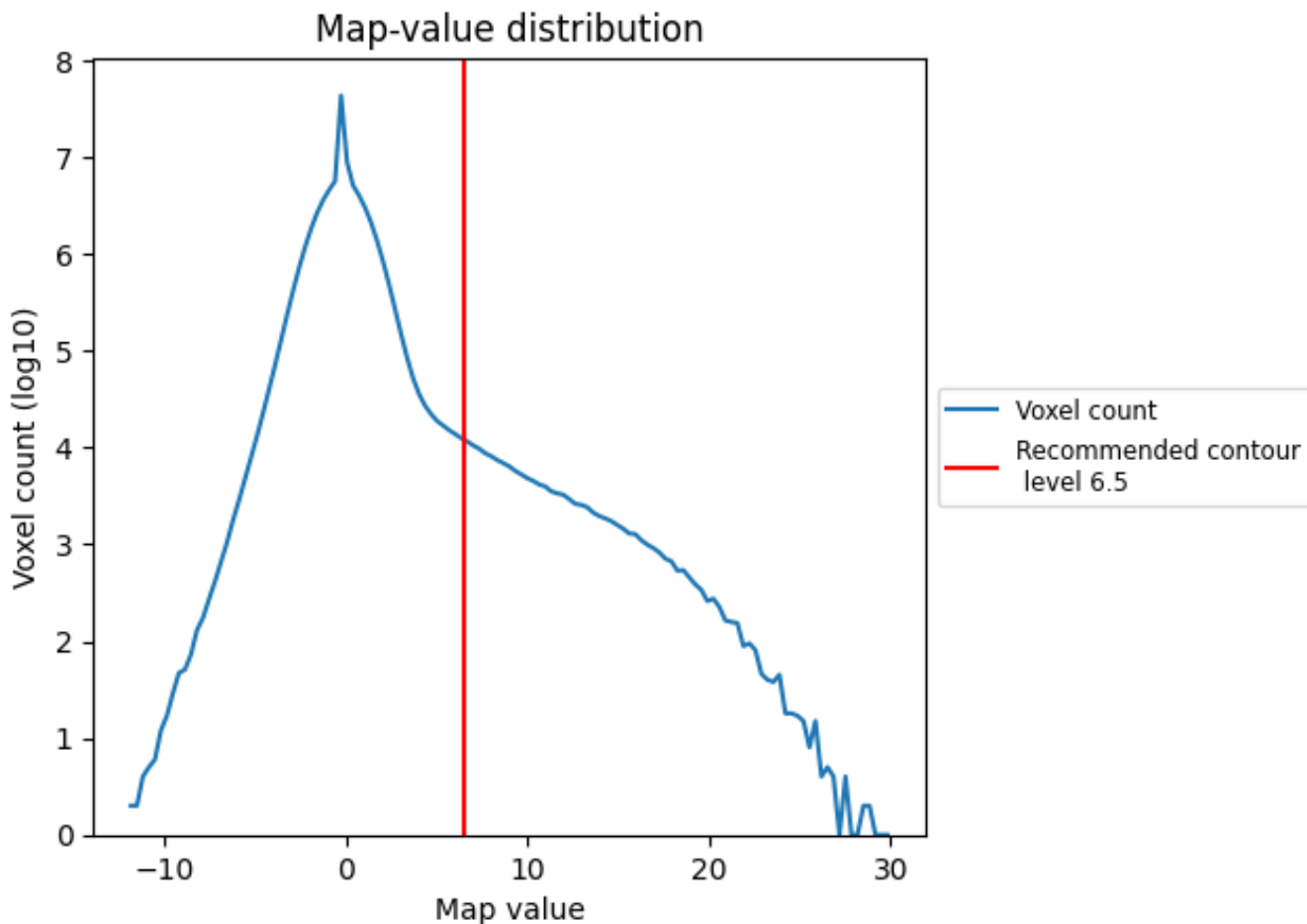
6.5 Mask visualisation

This section was not generated. No masks/segmentation were deposited.

7 Map analysis [i](#)

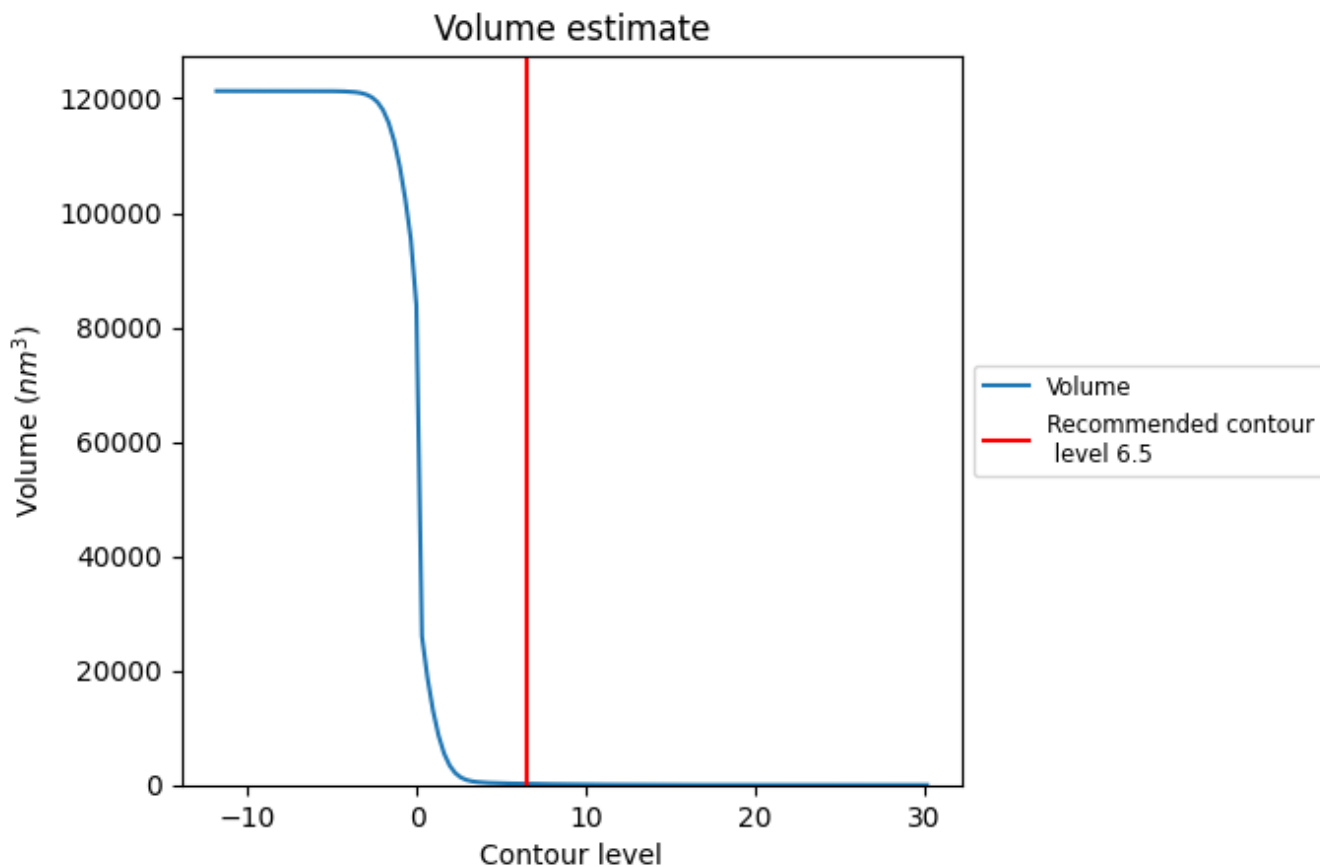
This section contains the results of statistical analysis of the map.

7.1 Map-value distribution [i](#)



The map-value distribution is plotted in 128 intervals along the x-axis. The y-axis is logarithmic. A spike in this graph at zero usually indicates that the volume has been masked.

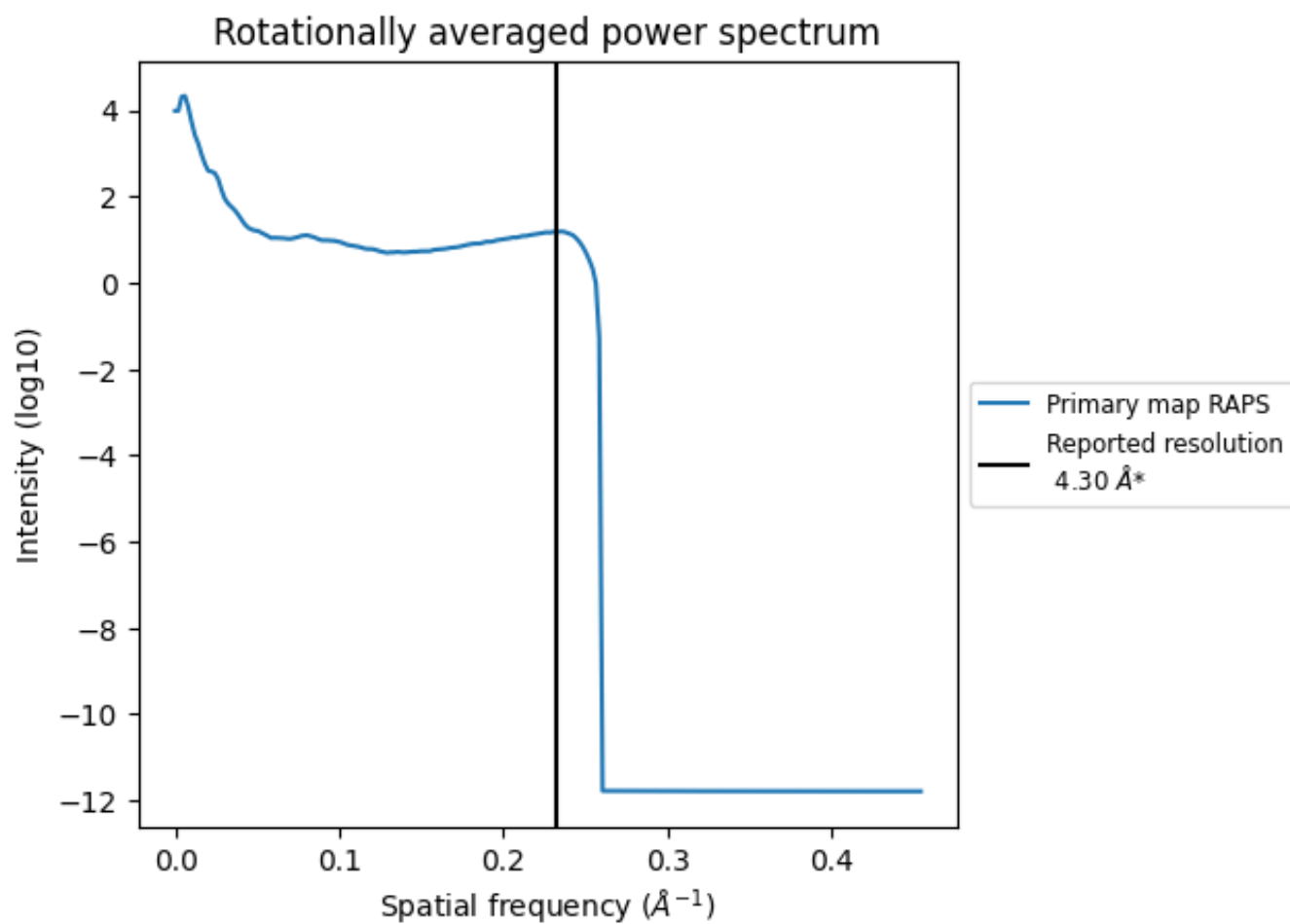
7.2 Volume estimate [i](#)



The volume at the recommended contour level is 197 nm³; this corresponds to an approximate mass of 178 kDa.

The volume estimate graph shows how the enclosed volume varies with the contour level. The recommended contour level is shown as a vertical line and the intersection between the line and the curve gives the volume of the enclosed surface at the given level.

7.3 Rotationally averaged power spectrum [\(i\)](#)



*Reported resolution corresponds to spatial frequency of 0.233 Å⁻¹

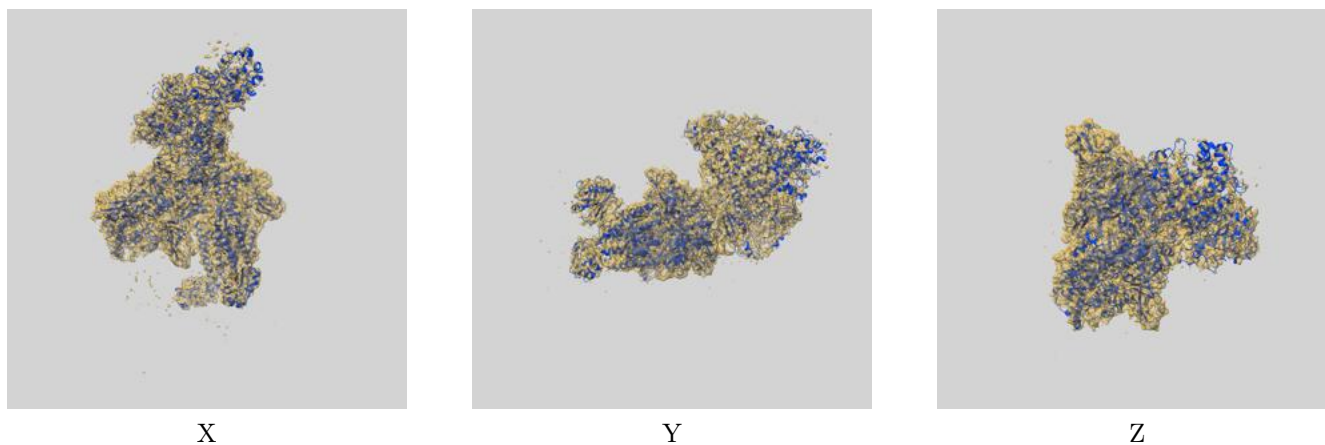
8 Fourier-Shell correlation

This section was not generated. No FSC curve or half-maps provided.

9 Map-model fit [i](#)

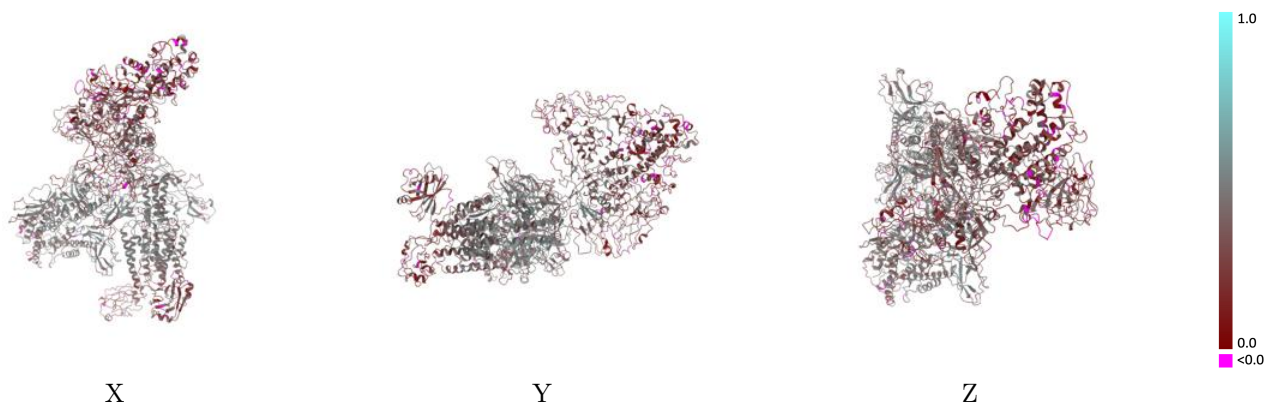
This section contains information regarding the fit between EMDB map EMD-0008 and PDB model 6GIY. Per-residue inclusion information can be found in section [3](#) on page [6](#).

9.1 Map-model overlay [i](#)



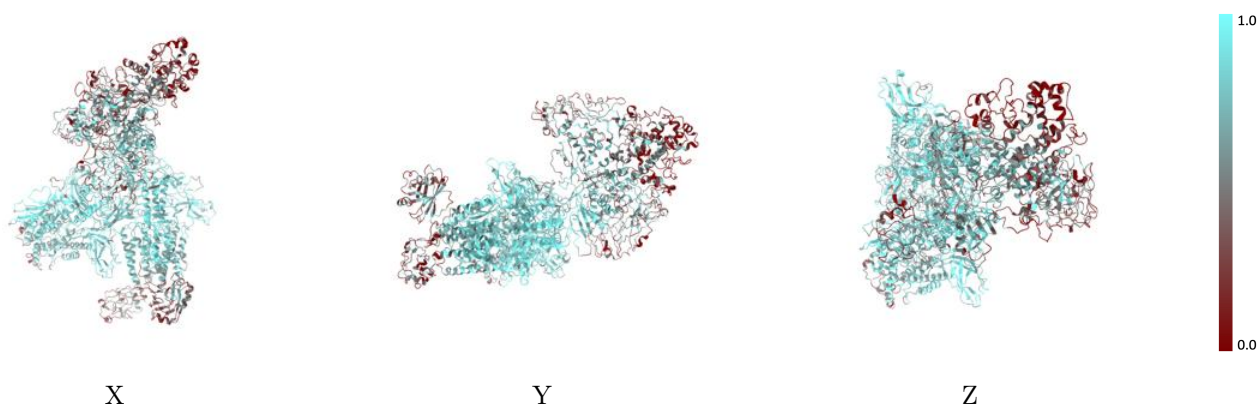
The images above show the 3D surface view of the map at the recommended contour level 6.5 at 50% transparency in yellow overlaid with a ribbon representation of the model coloured in blue. These images allow for the visual assessment of the quality of fit between the atomic model and the map.

9.2 Q-score mapped to coordinate model [i](#)



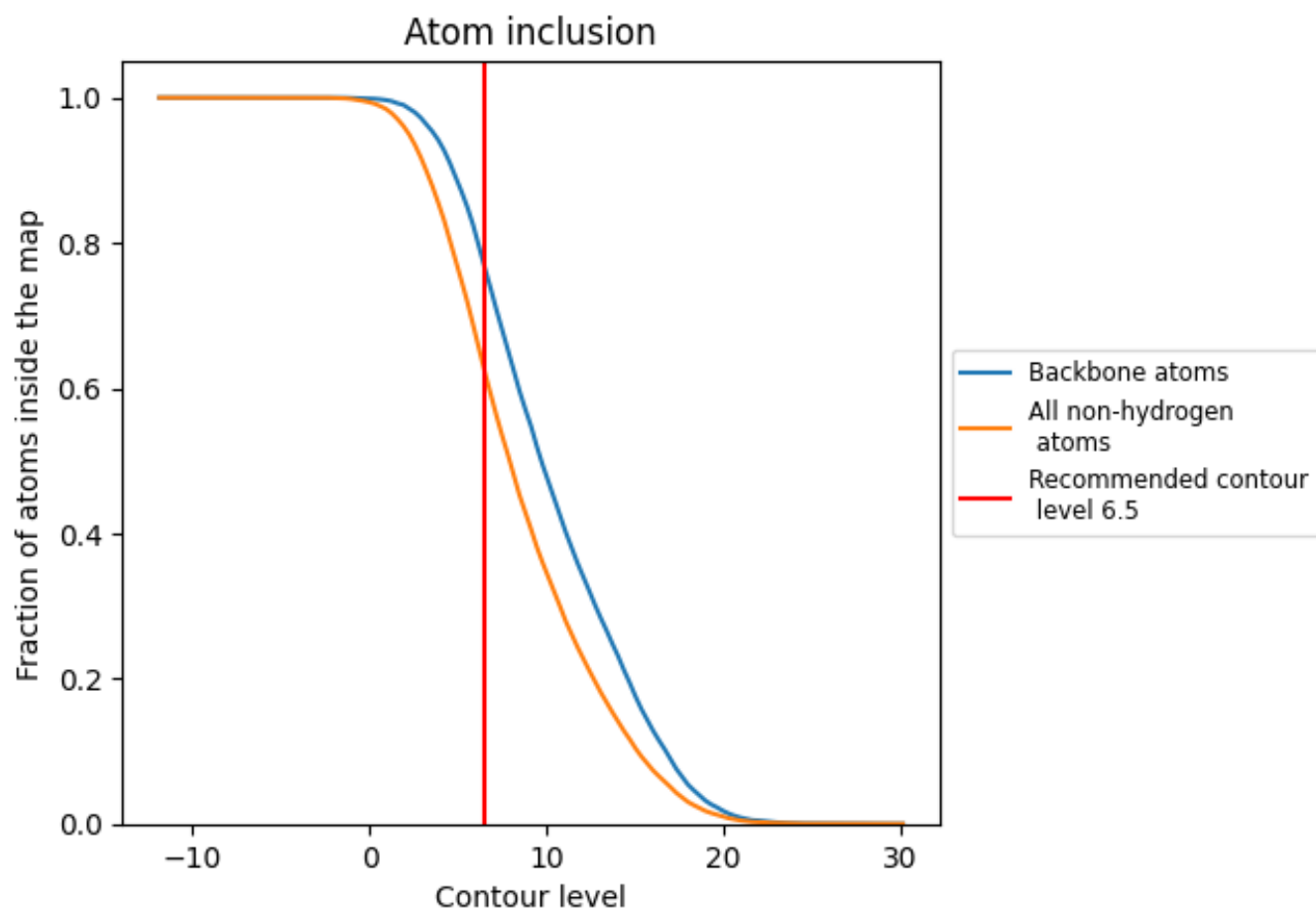
The images above show the model with each residue coloured according to its Q-score. This shows their resolvability in the map with higher Q-score values reflecting better resolvability. Please note: Q-score is calculating the resolvability of atoms, and thus high values are only expected at resolutions at which atoms can be resolved. Low Q-score values may therefore be expected for many entries.

9.3 Atom inclusion mapped to coordinate model [i](#)



The images above show the model with each residue coloured according to its atom inclusion. This shows to what extent they are inside the map at the recommended contour level (6.5).





















9.4 Atom inclusion [i](#)



At the recommended contour level, 77% of all backbone atoms, 63% of all non-hydrogen atoms, are inside the map.

9.5 Map-model fit summary [i](#)

The table lists the average atom inclusion at the recommended contour level (6.5) and Q-score for the entire model and for each chain.

Chain	Atom inclusion	Q-score
All	 0.6253	 0.3470
A	 0.4785	 0.2630
B	 0.4455	 0.2620
C	 0.4940	 0.3110
D	 0.7921	 0.4180
E	 0.7682	 0.4240
F	 0.7952	 0.4200
G	 0.6610	 0.3690
H	 0.6696	 0.3700
I	 0.7888	 0.4120

