



wwPDB X-ray Structure Validation Summary Report

Mar 11, 2024 – 02:12 PM EDT

PDB ID : 8GET
Title : R. hominis 2 beta-glucuronidase bound to norquetiapine-glucuronide
Authors : Simpson, J.B.; Redinbo, M.R.
Deposited on : 2023-03-07
Resolution : 2.90 Å(reported)

This is a wwPDB X-ray Structure Validation Summary Report for a publicly released PDB entry.

We welcome your comments at validation@mail.wwpdb.org

A user guide is available at

<https://www.wwpdb.org/validation/2017/XrayValidationReportHelp>

with specific help available everywhere you see the  symbol.

The types of validation reports are described at

<http://www.wwpdb.org/validation/2017/FAQs#types>.

The following versions of software and data (see [references](#) ) were used in the production of this report:

MolProbity : 4.02b-467
Mogul : 1.8.5 (274361), CSD as541be (2020)
Xtriage (Phenix) : 1.13
EDS : 2.36
buster-report : 1.1.7 (2018)
Percentile statistics : 20191225.v01 (using entries in the PDB archive December 25th 2019)
Refmac : 5.8.0158
CCP4 : 7.0.044 (Gargrove)
Ideal geometry (proteins) : Engh & Huber (2001)
Ideal geometry (DNA, RNA) : Parkinson et al. (1996)
Validation Pipeline (wwPDB-VP) : 2.36

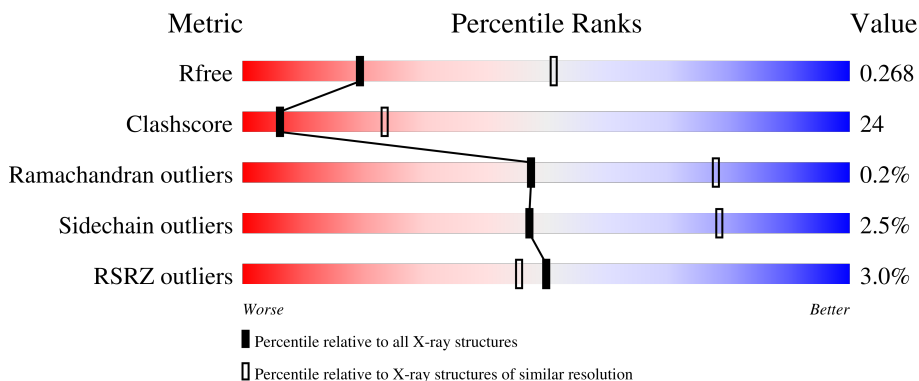
1 Overall quality at a glance

The following experimental techniques were used to determine the structure:

X-RAY DIFFRACTION

The reported resolution of this entry is 2.90 Å.

Percentile scores (ranging between 0-100) for global validation metrics of the entry are shown in the following graphic. The table shows the number of entries on which the scores are based.



Metric	Whole archive (#Entries)	Similar resolution (#Entries, resolution range(Å))
R_{free}	130704	1957 (2.90-2.90)
Clashscore	141614	2172 (2.90-2.90)
Ramachandran outliers	138981	2115 (2.90-2.90)
Sidechain outliers	138945	2117 (2.90-2.90)
RSRZ outliers	127900	1906 (2.90-2.90)

The table below summarises the geometric issues observed across the polymeric chains and their fit to the electron density. The red, orange, yellow and green segments of the lower bar indicate the fraction of residues that contain outliers for ≥ 3 , 2, 1 and 0 types of geometric quality criteria respectively. A grey segment represents the fraction of residues that are not modelled. The numeric value for each fraction is indicated below the corresponding segment, with a dot representing fractions $\leq 5\%$. The upper red bar (where present) indicates the fraction of residues that have poor fit to the electron density. The numeric value is given above the bar.

Mol	Chain	Length	Quality of chain
1	A	757	 2% 49% 34% 16%
1	B	757	 2% 51% 34% 15%
1	C	757	 3% 51% 35% 13%
1	D	757	 4% 45% 37% 18%

The following table lists non-polymeric compounds, carbohydrate monomers and non-standard

residues in protein, DNA, RNA chains that are outliers for geometric or electron-density-fit criteria:

Mol	Type	Chain	Res	Chirality	Geometry	Clashes	Electron density
2	GOL	B	801	-	-	-	X

2 Entry composition

There are 5 unique types of molecules in this entry. The entry contains 20810 atoms, of which 140 are hydrogens and 0 are deuteriums.

In the tables below, the ZeroOcc column contains the number of atoms modelled with zero occupancy, the AltConf column contains the number of residues with at least one atom in alternate conformation and the Trace column contains the number of residues modelled with at most 2 atoms.

- Molecule 1 is a protein called beta-galactosidase.

Mol	Chain	Residues	Atoms					ZeroOcc	AltConf	Trace
			Total	C	N	O	S			
1	A	639	5127	3262	852	992	21	0	0	0
1	B	644	5138	3263	853	1002	20	0	0	0
1	C	659	5256	3339	879	1017	21	0	0	0
1	D	623	4942	3141	828	955	18	0	0	0

There are 4 discrepancies between the modelled and reference sequences:

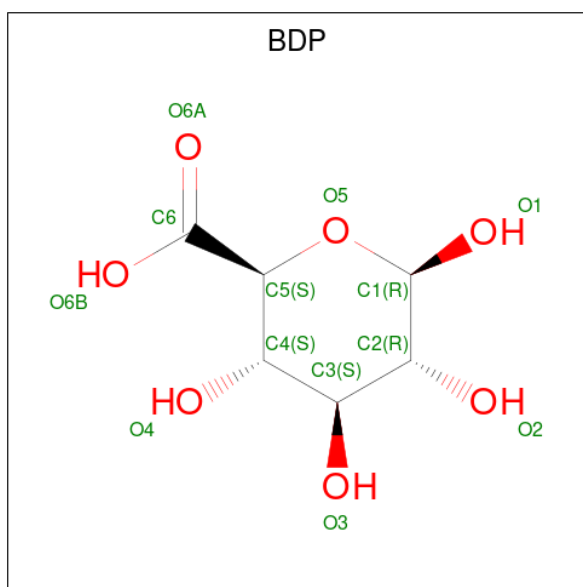
Chain	Residue	Modelled	Actual	Comment	Reference
A	247	ALA	THR	conflict	UNP A0A395V8I7
B	247	ALA	THR	conflict	UNP A0A395V8I7
C	247	ALA	THR	conflict	UNP A0A395V8I7
D	247	ALA	THR	conflict	UNP A0A395V8I7

- Molecule 2 is GLYCEROL (three-letter code: GOL) (formula: C₃H₈O₃).



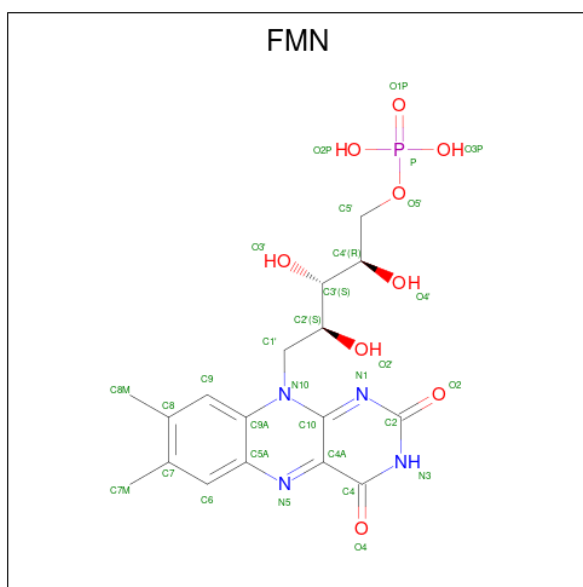
Mol	Chain	Residues	Atoms				ZeroOcc	AltConf
2	A	1	Total	C	H	O	0	0
			14	3	8	3		
2	B	1	Total	C	H	O	0	0
			14	3	8	3		
2	B	1	Total	C	H	O	0	0
			14	3	8	3		
2	B	1	Total	C	H	O	0	0
			14	3	8	3		
2	C	1	Total	C	H	O	0	0
			14	3	8	3		
2	C	1	Total	C	H	O	0	0
			14	3	8	3		
2	D	1	Total	C	H	O	0	0
			14	3	8	3		

- Molecule 3 is beta-D-glucopyranuronic acid (three-letter code: BDP) (formula: C₆H₁₀O₇).



Mol	Chain	Residues	Atoms				ZeroOcc	AltConf
3	A	1	Total	C	H	O	0	0
			22	6	9	7		
3	B	1	Total	C	H	O	0	0
			22	6	9	7		
3	D	1	Total	C	H	O	0	0
			22	6	9	7		

- Molecule 4 is FLAVIN MONONUCLEOTIDE (three-letter code: FMN) (formula: C₁₇H₂₁N₄O₉P).



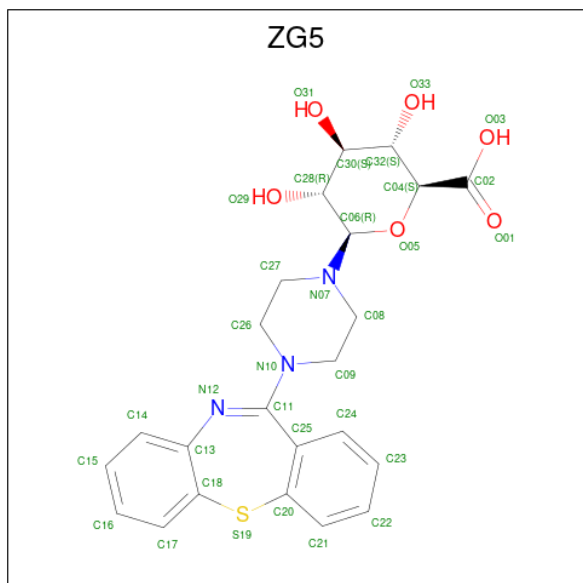
Mol	Chain	Residues	Atoms					ZeroOcc	AltConf	
4	A	1	Total	C	H	N	O	P	0	0
			50	17	19	4	9	1		

Continued on next page...

Continued from previous page...

Mol	Chain	Residues	Atoms					ZeroOcc	AltConf	
4	B	1	Total	C	H	N	O	P	0	0
			50	17	19	4	9	1		
4	C	1	Total	C	H	N	O	P	0	0
			50	17	19	4	9	1		

- Molecule 5 is 11-(4-beta-D-glucopyranuronosylpiperazin-1-yl)dibenzo[b,f][1,4]thiazepine (three-letter code: ZG5) (formula: C₂₃H₂₅N₃O₆S).

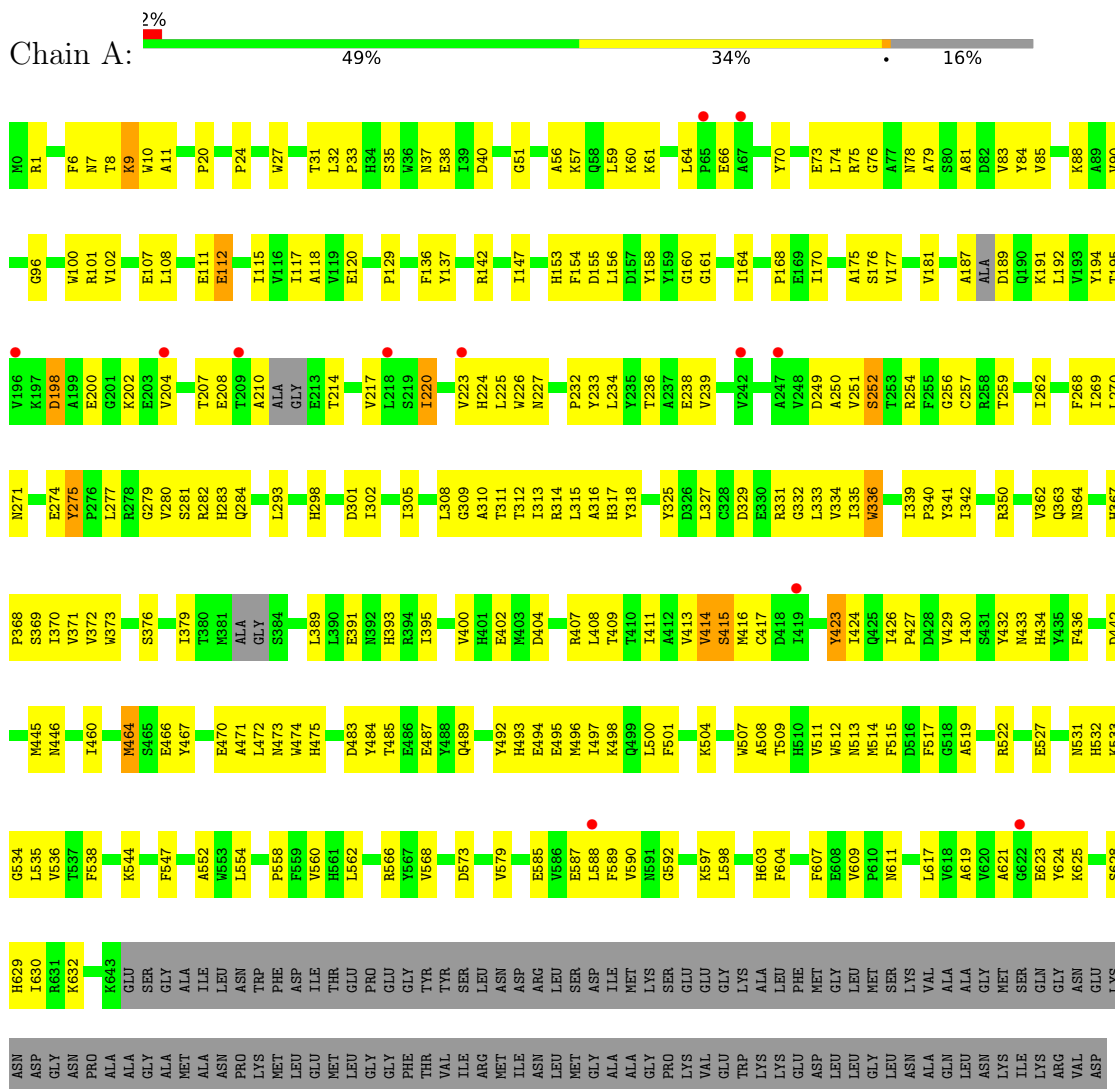


Mol	Chain	Residues	Atoms					ZeroOcc	AltConf
5	C	1	Total	C	N	O	S	0	0
			33	23	3	6	1		

3 Residue-property plots i

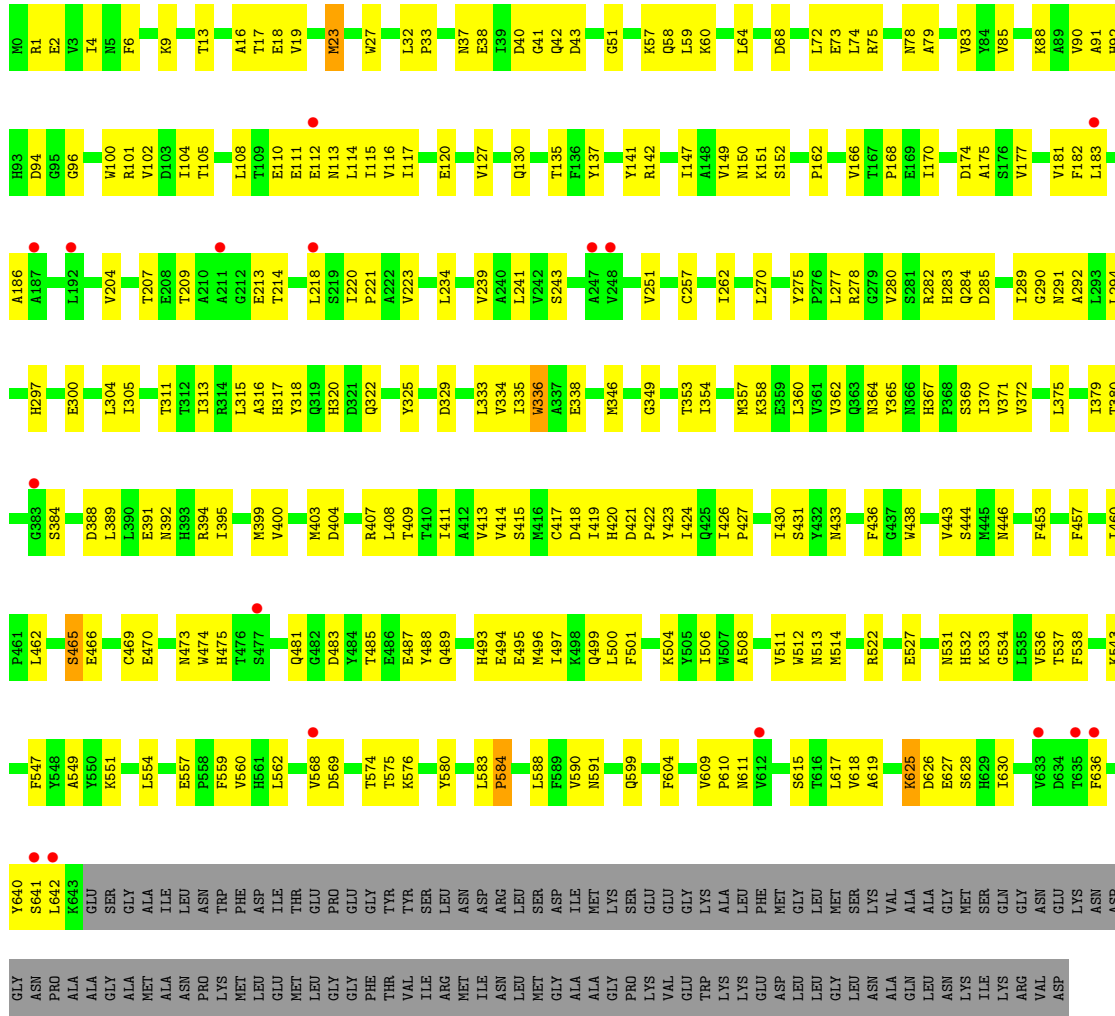
These plots are drawn for all protein, RNA, DNA and oligosaccharide chains in the entry. The first graphic for a chain summarises the proportions of the various outlier classes displayed in the second graphic. The second graphic shows the sequence view annotated by issues in geometry and electron density. Residues are color-coded according to the number of geometric quality criteria for which they contain at least one outlier: green = 0, yellow = 1, orange = 2 and red = 3 or more. A red dot above a residue indicates a poor fit to the electron density ($RSRZ > 2$). Stretches of 2 or more consecutive residues without any outlier are shown as a green connector. Residues present in the sample, but not in the model, are shown in grey.

- Molecule 1: beta-galactosidase

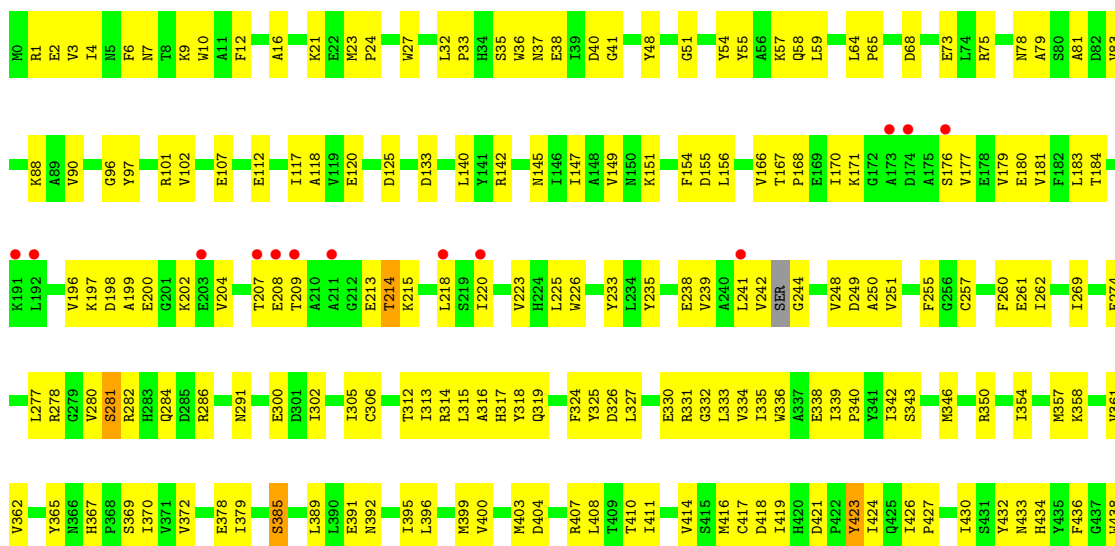


- Molecule 1: beta-galactosidase





• Molecule 1: beta-galactosidase



MET
LEU
GLU
MET
LEU
GLY
GLY
PHE
THR
VAL
ILE
ARG
MET
ILE
ASN
LEU
MET
GLY
ALA
ALA
GLY
PRO
LYS
VAL
GLU
TRP
LYS
LYS
GLU
ASP
LEU
LEU
GLY
LEU
ASN
ALA
GLN
LEU
ASN
LYS
ILE
LYS
LYS
ARG
VAL
ASP

4 Data and refinement statistics

Property	Value	Source
Space group	P 2 21 21	Depositor
Cell constants a, b, c, α , β , γ	100.47Å 146.29Å 281.43Å 90.00° 90.00° 90.00°	Depositor
Resolution (Å)	48.05 – 2.90 48.05 – 2.90	Depositor EDS
% Data completeness (in resolution range)	89.0 (48.05-2.90) 89.0 (48.05-2.90)	Depositor EDS
R_{merge}	0.07	Depositor
R_{sym}	(Not available)	Depositor
$\langle I/\sigma(I) \rangle$ ¹	1.54 (at 2.91Å)	Xtrriage
Refinement program	phenix.refine 1.19.2_4158, PHENIX 1.19.2_4158	Depositor
R, R_{free}	0.224 , 0.269 0.222 , 0.268	Depositor DCC
R_{free} test set	1999 reflections (2.42%)	wwPDB-VP
Wilson B-factor (Å ²)	65.6	Xtrriage
Anisotropy	0.666	Xtrriage
Bulk solvent k_{sol} (e/Å ³), B_{sol} (Å ²)	0.34 , 53.9	EDS
L-test for twinning ²	$\langle L \rangle = 0.49$, $\langle L^2 \rangle = 0.32$	Xtrriage
Estimated twinning fraction	No twinning to report.	Xtrriage
F_o, F_c correlation	0.93	EDS
Total number of atoms	20810	wwPDB-VP
Average B, all atoms (Å ²)	69.0	wwPDB-VP

Xtrriage's analysis on translational NCS is as follows: *The largest off-origin peak in the Patterson function is 2.93% of the height of the origin peak. No significant pseudotranslation is detected.*

¹Intensities estimated from amplitudes.

²Theoretical values of $\langle |L| \rangle$, $\langle L^2 \rangle$ for acentric reflections are 0.5, 0.333 respectively for untwinned datasets, and 0.375, 0.2 for perfectly twinned datasets.

5 Model quality [i](#)

5.1 Standard geometry [i](#)

Bond lengths and bond angles in the following residue types are not validated in this section: GOL, FMN, BDP, ZG5

The Z score for a bond length (or angle) is the number of standard deviations the observed value is removed from the expected value. A bond length (or angle) with $|Z| > 5$ is considered an outlier worth inspection. RMSZ is the root-mean-square of all Z scores of the bond lengths (or angles).

Mol	Chain	Bond lengths		Bond angles	
		RMSZ	# Z >5	RMSZ	# Z >5
1	A	0.26	0/5267	0.47	0/7165
1	B	0.28	0/5281	0.49	0/7194
1	C	0.26	0/5398	0.49	0/7345
1	D	0.25	0/5076	0.47	0/6908
All	All	0.26	0/21022	0.48	0/28612

There are no bond length outliers.

There are no bond angle outliers.

There are no chirality outliers.

There are no planarity outliers.

5.2 Too-close contacts [i](#)

In the following table, the Non-H and H(model) columns list the number of non-hydrogen atoms and hydrogen atoms in the chain respectively. The H(added) column lists the number of hydrogen atoms added and optimized by MolProbity. The Clashes column lists the number of clashes within the asymmetric unit, whereas Symm-Clashes lists symmetry-related clashes.

Mol	Chain	Non-H	H(model)	H(added)	Clashes	Symm-Clashes
1	A	5127	0	4768	231	0
1	B	5138	0	4748	226	0
1	C	5256	0	4894	241	0
1	D	4942	0	4487	275	0
2	A	6	8	8	1	0
2	B	18	24	24	1	0
2	C	12	16	16	5	0
2	D	6	8	8	0	0
3	A	13	9	9	2	0

Continued on next page...

Continued from previous page...

Mol	Chain	Non-H	H(model)	H(added)	Clashes	Symm-Clashes
3	B	13	9	9	3	0
3	D	13	9	8	1	0
4	A	31	19	19	1	0
4	B	31	19	19	3	0
4	C	31	19	19	2	0
5	C	33	0	0	1	0
All	All	20670	140	19036	972	0

The all-atom clashscore is defined as the number of clashes found per 1000 atoms (including hydrogen atoms). The all-atom clashscore for this structure is 24.

The worst 5 of 972 close contacts within the same asymmetric unit are listed below, sorted by their clash magnitude.

Atom-1	Atom-2	Interatomic distance (Å)	Clash overlap (Å)
1:B:168:PRO:HB3	1:B:177:VAL:HG12	1.35	1.07
1:B:371:VAL:HG23	1:B:372:VAL:HG13	1.39	1.02
1:C:166:VAL:HG22	1:C:179:VAL:HG12	1.41	1.02
1:C:367:HIS:HB2	1:C:370:ILE:HD12	1.43	0.98
1:B:175:ALA:HB3	1:B:223:VAL:HG11	1.48	0.95

There are no symmetry-related clashes.

5.3 Torsion angles [i](#)

5.3.1 Protein backbone [i](#)

In the following table, the Percentiles column shows the percent Ramachandran outliers of the chain as a percentile score with respect to all X-ray entries followed by that with respect to entries of similar resolution.

The Analysed column shows the number of residues for which the backbone conformation was analysed, and the total number of residues.

Mol	Chain	Analysed	Favoured	Allowed	Outliers	Percentiles
1	A	631/757 (83%)	581 (92%)	49 (8%)	1 (0%)	47 78
1	B	642/757 (85%)	596 (93%)	43 (7%)	3 (0%)	29 61
1	C	653/757 (86%)	609 (93%)	44 (7%)	0	100 100
1	D	605/757 (80%)	545 (90%)	59 (10%)	1 (0%)	47 78
All	All	2531/3028 (84%)	2331 (92%)	195 (8%)	5 (0%)	47 78

All (5) Ramachandran outliers are listed below:

Mol	Chain	Res	Type
1	B	9	LYS
1	D	221	PRO
1	A	9	LYS
1	B	506	ILE
1	B	584	PRO

5.3.2 Protein sidechains [i](#)

In the following table, the Percentiles column shows the percent sidechain outliers of the chain as a percentile score with respect to all X-ray entries followed by that with respect to entries of similar resolution.

The Analysed column shows the number of residues for which the sidechain conformation was analysed, and the total number of residues.

Mol	Chain	Analysed	Rotameric	Outliers	Percentiles
1	A	539/642 (84%)	525 (97%)	14 (3%)	46 77
1	B	537/642 (84%)	524 (98%)	13 (2%)	49 79
1	C	549/642 (86%)	537 (98%)	12 (2%)	52 81
1	D	504/642 (78%)	490 (97%)	14 (3%)	43 76
All	All	2129/2568 (83%)	2076 (98%)	53 (2%)	47 78

5 of 53 residues with a non-rotameric sidechain are listed below:

Mol	Chain	Res	Type
1	C	214	THR
1	C	535	LEU
1	D	430	ILE
1	C	281	SER
1	C	423	TYR

Sometimes sidechains can be flipped to improve hydrogen bonding and reduce clashes. All (5) such sidechains are listed below:

Mol	Chain	Res	Type
1	A	392	ASN
1	A	446	ASN
1	C	481	GLN
1	D	446	ASN
1	D	475	HIS

5.3.3 RNA [i](#)

There are no RNA molecules in this entry.

5.4 Non-standard residues in protein, DNA, RNA chains [i](#)

There are no non-standard protein/DNA/RNA residues in this entry.

5.5 Carbohydrates [i](#)

There are no monosaccharides in this entry.

5.6 Ligand geometry [i](#)

14 ligands are modelled in this entry.

In the following table, the Counts columns list the number of bonds (or angles) for which Mogul statistics could be retrieved, the number of bonds (or angles) that are observed in the model and the number of bonds (or angles) that are defined in the Chemical Component Dictionary. The Link column lists molecule types, if any, to which the group is linked. The Z score for a bond length (or angle) is the number of standard deviations the observed value is removed from the expected value. A bond length (or angle) with $|Z| > 2$ is considered an outlier worth inspection. RMSZ is the root-mean-square of all Z scores of the bond lengths (or angles).

Mol	Type	Chain	Res	Link	Bond lengths			Bond angles		
					Counts	RMSZ	# Z > 2	Counts	RMSZ	# Z > 2
2	GOL	D	802	-	5,5,5	0.88	0	5,5,5	1.00	0
2	GOL	B	802	-	5,5,5	0.80	0	5,5,5	0.97	0
4	FMN	C	1604	-	33,33,33	1.08	2 (6%)	48,50,50	1.28	9 (18%)
3	BDP	D	801	-	13,13,13	1.41	2 (15%)	18,19,19	1.11	1 (5%)
2	GOL	B	801	-	5,5,5	0.52	0	5,5,5	0.86	0
5	ZG5	C	1601	-	36,37,37	1.74	6 (16%)	50,54,54	3.13	18 (36%)
4	FMN	B	805	-	33,33,33	1.12	2 (6%)	48,50,50	1.35	11 (22%)
3	BDP	B	804	-	13,13,13	1.39	2 (15%)	18,19,19	1.56	3 (16%)
2	GOL	A	801	-	5,5,5	0.86	0	5,5,5	0.93	0
2	GOL	B	803	-	5,5,5	0.65	0	5,5,5	0.83	0
2	GOL	C	1602	-	5,5,5	0.92	0	5,5,5	1.00	0
4	FMN	A	803	-	33,33,33	1.05	2 (6%)	48,50,50	1.21	7 (14%)
3	BDP	A	802	-	13,13,13	1.47	2 (15%)	18,19,19	2.16	4 (22%)
2	GOL	C	1603	-	5,5,5	0.76	0	5,5,5	0.93	0

In the following table, the Chirals column lists the number of chiral outliers, the number of chiral

centers analysed, the number of these observed in the model and the number defined in the Chemical Component Dictionary. Similar counts are reported in the Torsions and Rings columns. '-' means no outliers of that kind were identified.

Mol	Type	Chain	Res	Link	Chirals	Torsions	Rings
2	GOL	D	802	-	-	2/4/4/4	-
2	GOL	B	802	-	-	0/4/4/4	-
4	FMN	C	1604	-	-	9/18/18/18	0/3/3/3
3	BDP	D	801	-	-	1/4/24/24	0/1/1/1
2	GOL	B	801	-	-	1/4/4/4	-
5	ZG5	C	1601	-	-	7/12/54/54	0/4/5/5
4	FMN	B	805	-	-	8/18/18/18	0/3/3/3
3	BDP	B	804	-	-	0/4/24/24	0/1/1/1
2	GOL	A	801	-	-	2/4/4/4	-
2	GOL	B	803	-	-	2/4/4/4	-
2	GOL	C	1602	-	-	0/4/4/4	-
4	FMN	A	803	-	-	7/18/18/18	0/3/3/3
3	BDP	A	802	-	-	1/4/24/24	0/1/1/1
2	GOL	C	1603	-	-	3/4/4/4	-

The worst 5 of 18 bond length outliers are listed below:

Mol	Chain	Res	Type	Atoms	Z	Observed(Å)	Ideal(Å)
5	C	1601	ZG5	C11-N10	6.65	1.51	1.37
5	C	1601	ZG5	C11-N12	4.01	1.32	1.29
4	B	805	FMN	C4A-N5	3.75	1.38	1.30
4	C	1604	FMN	C4A-N5	3.73	1.38	1.30
4	A	803	FMN	C4A-N5	3.70	1.37	1.30

The worst 5 of 53 bond angle outliers are listed below:

Mol	Chain	Res	Type	Atoms	Z	Observed(°)	Ideal(°)
5	C	1601	ZG5	N10-C11-N12	-13.13	108.31	118.30
5	C	1601	ZG5	C13-N12-C11	10.78	137.04	123.03
5	C	1601	ZG5	C20-C25-C11	5.09	129.94	121.95
3	A	802	BDP	C1-O5-C5	4.83	119.32	112.22
5	C	1601	ZG5	C20-S19-C18	4.37	110.61	99.13

There are no chirality outliers.

5 of 43 torsion outliers are listed below:

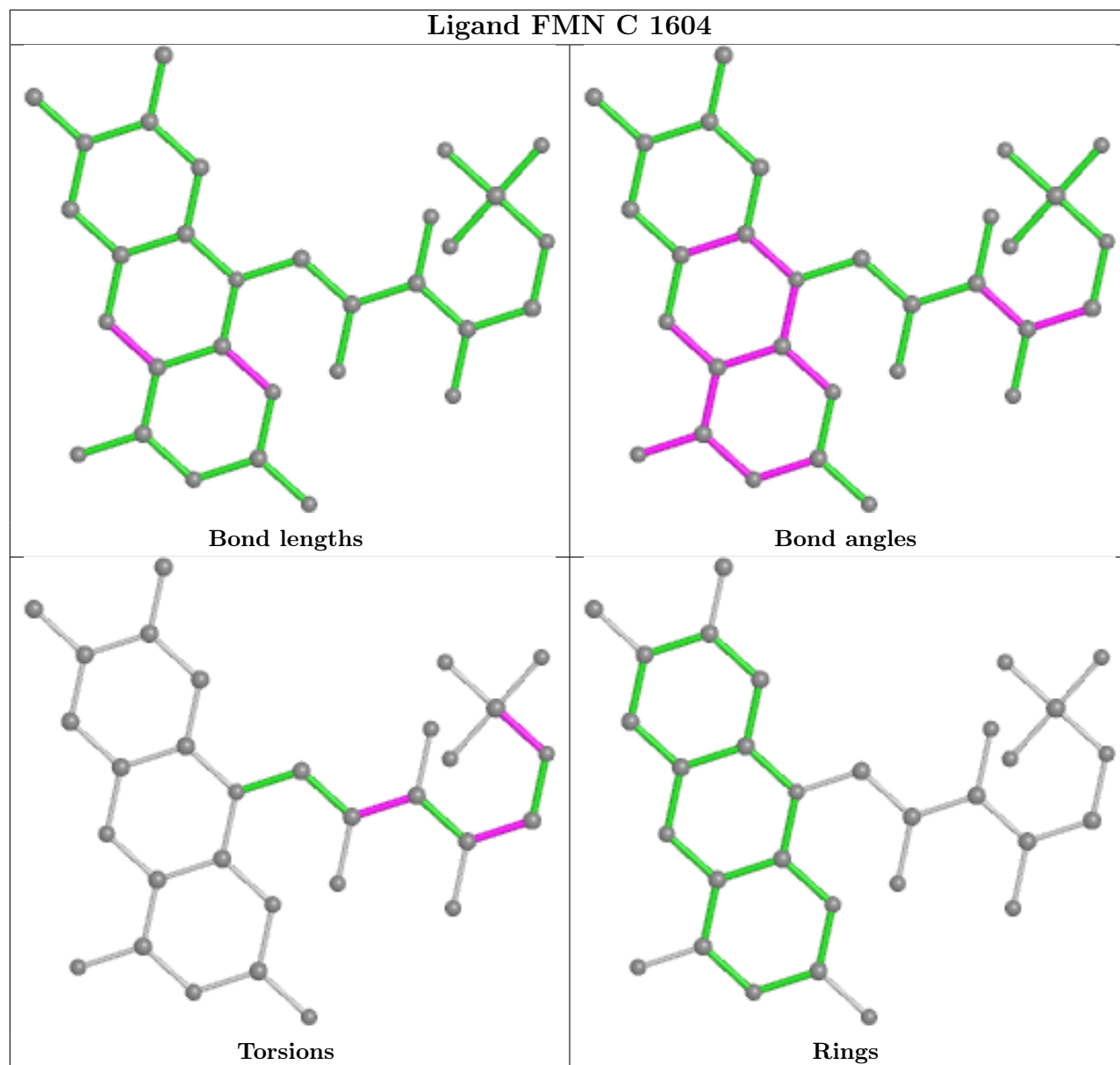
Mol	Chain	Res	Type	Atoms
2	A	801	GOL	C1-C2-C3-O3
2	B	803	GOL	C1-C2-C3-O3
2	B	803	GOL	O2-C2-C3-O3
2	D	802	GOL	C1-C2-C3-O3
4	A	803	FMN	C1'-C2'-C3'-O3'

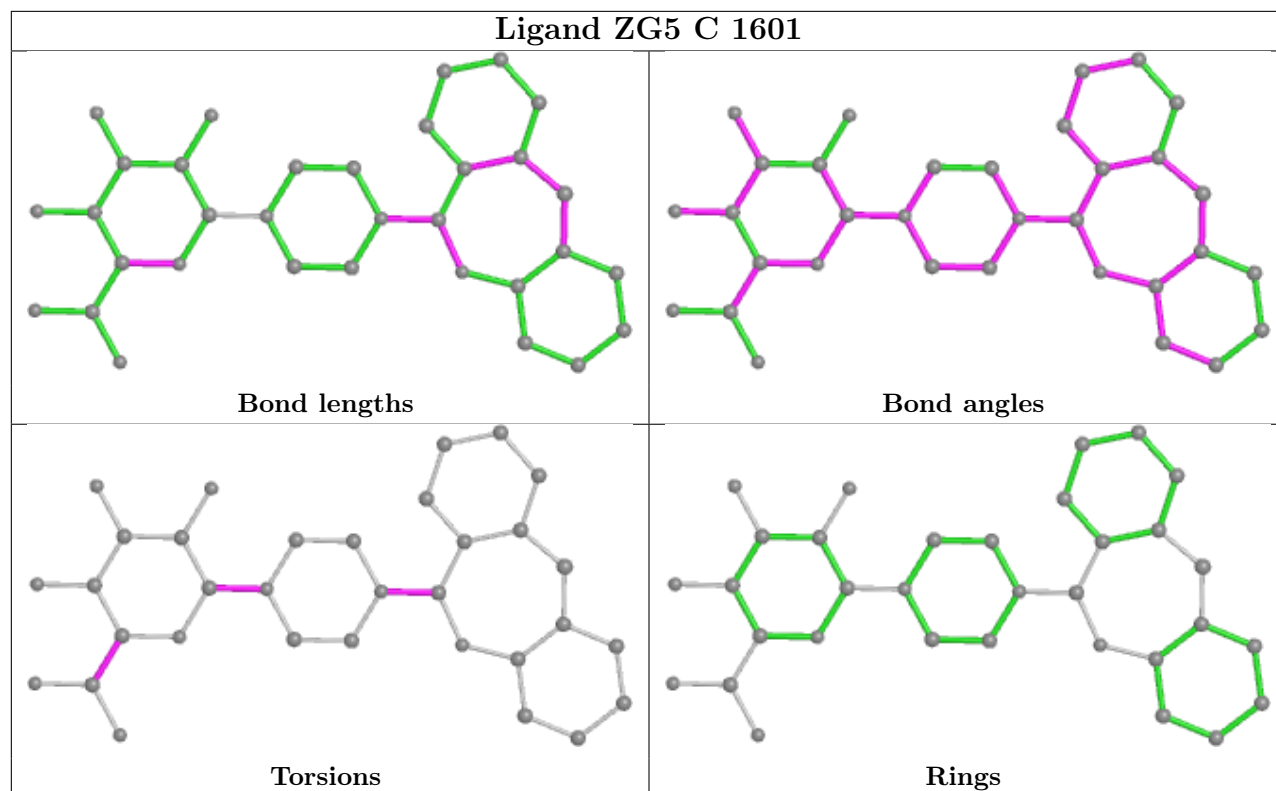
There are no ring outliers.

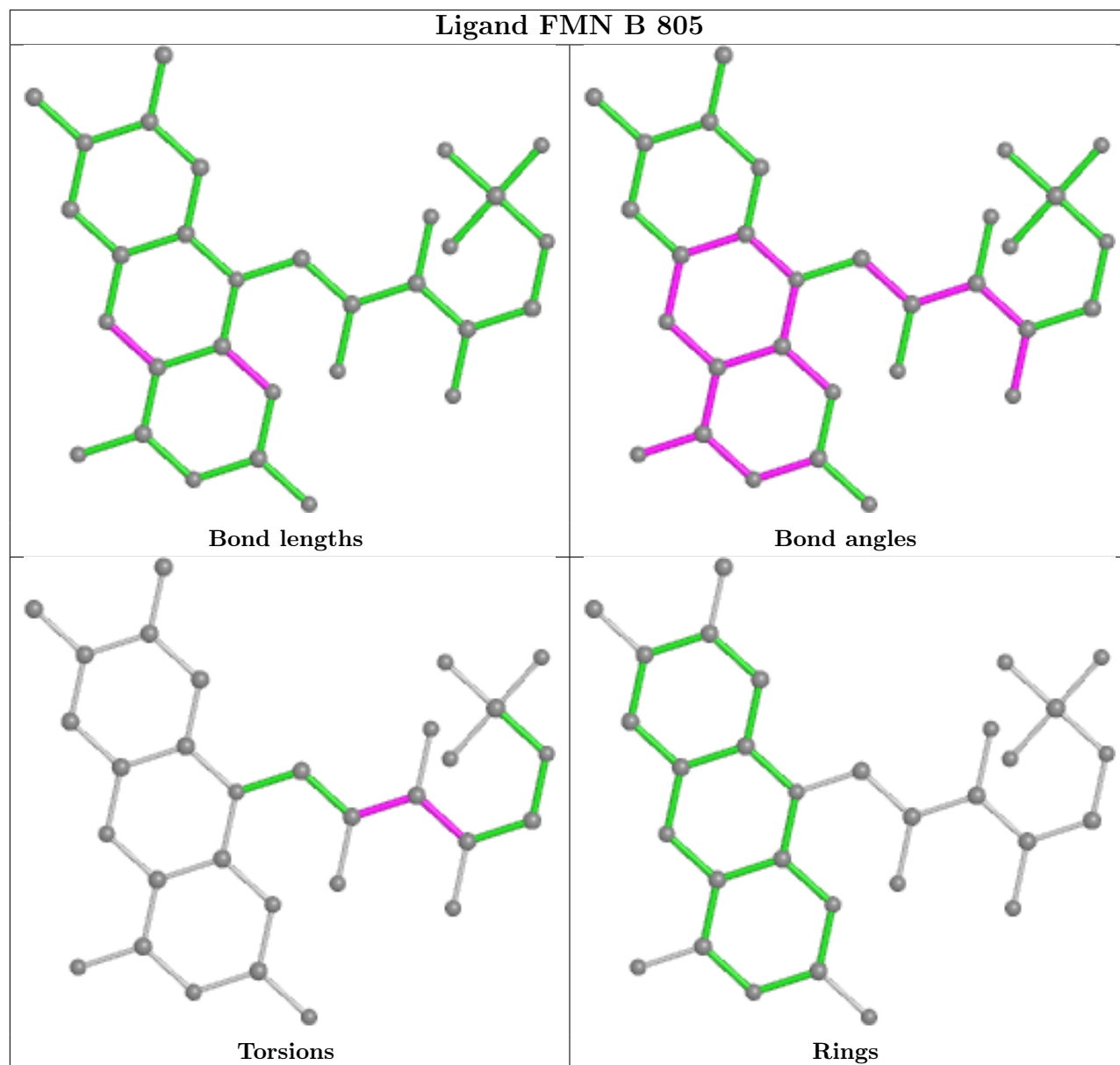
11 monomers are involved in 20 short contacts:

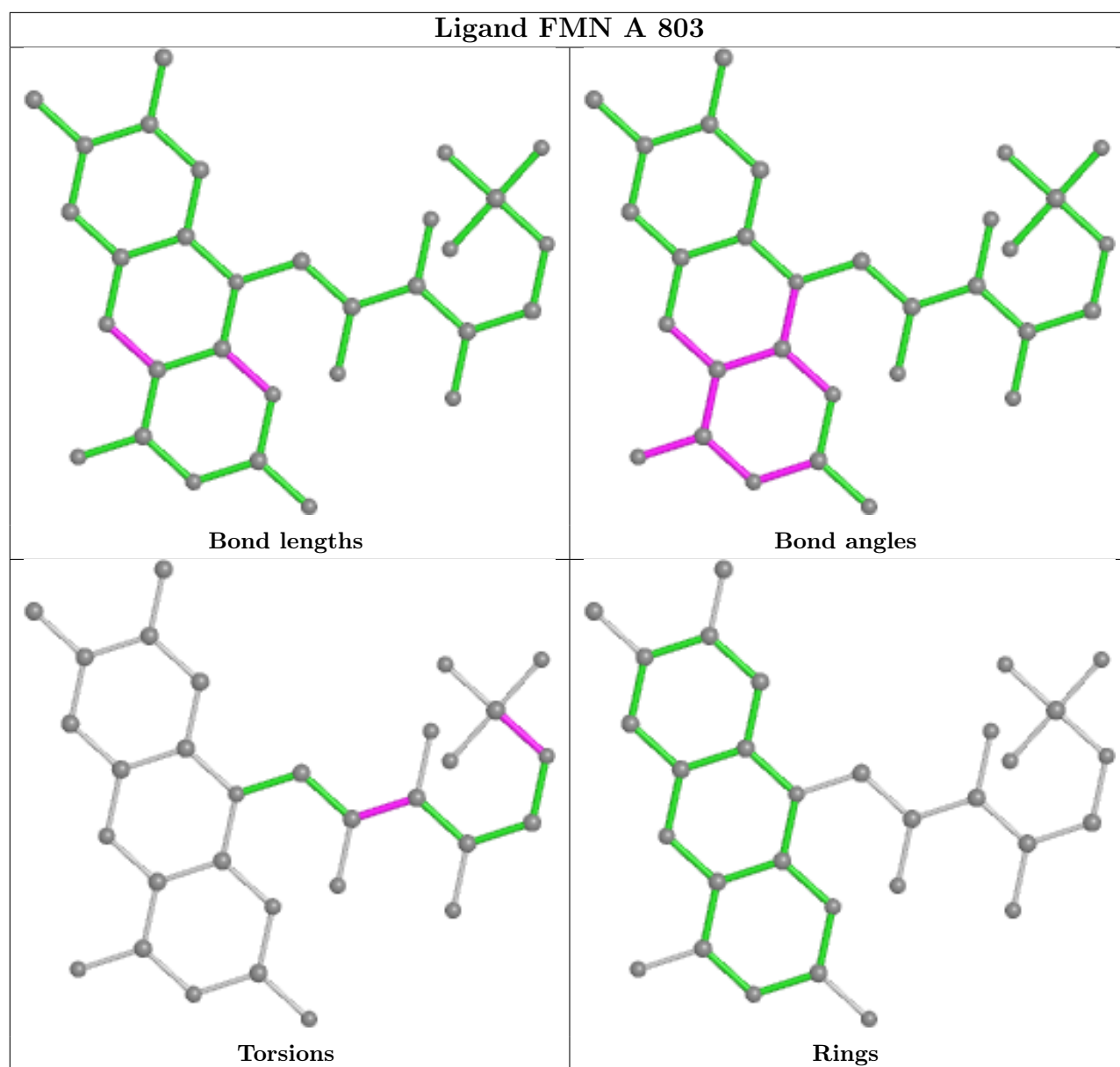
Mol	Chain	Res	Type	Clashes	Symm-Clashes
4	C	1604	FMN	2	0
3	D	801	BDP	1	0
5	C	1601	ZG5	1	0
4	B	805	FMN	3	0
3	B	804	BDP	3	0
2	A	801	GOL	1	0
2	B	803	GOL	1	0
2	C	1602	GOL	2	0
4	A	803	FMN	1	0
3	A	802	BDP	2	0
2	C	1603	GOL	3	0

The following is a two-dimensional graphical depiction of Mogul quality analysis of bond lengths, bond angles, torsion angles, and ring geometry for all instances of the Ligand of Interest. In addition, ligands with molecular weight > 250 and outliers as shown on the validation Tables will also be included. For torsion angles, if less than 5% of the Mogul distribution of torsion angles is within 10 degrees of the torsion angle in question, then that torsion angle is considered an outlier. Any bond that is central to one or more torsion angles identified as an outlier by Mogul will be highlighted in the graph. For rings, the root-mean-square deviation (RMSD) between the ring in question and similar rings identified by Mogul is calculated over all ring torsion angles. If the average RMSD is greater than 60 degrees and the minimal RMSD between the ring in question and any Mogul-identified rings is also greater than 60 degrees, then that ring is considered an outlier. The outliers are highlighted in purple. The color gray indicates Mogul did not find sufficient equivalents in the CSD to analyse the geometry.









5.7 Other polymers [i](#)

There are no such residues in this entry.

5.8 Polymer linkage issues [i](#)

There are no chain breaks in this entry.

6 Fit of model and data [i](#)

6.1 Protein, DNA and RNA chains [i](#)

In the following table, the column labelled ‘#RSRZ> 2’ contains the number (and percentage) of RSRZ outliers, followed by percent RSRZ outliers for the chain as percentile scores relative to all X-ray entries and entries of similar resolution. The OWAB column contains the minimum, median, 95th percentile and maximum values of the occupancy-weighted average B-factor per residue. The column labelled ‘Q< 0.9’ lists the number of (and percentage) of residues with an average occupancy less than 0.9.

Mol	Chain	Analysed	<RSRZ>	#RSRZ>2	OWAB(Å ²)	Q<0.9
1	A	639/757 (84%)	0.12	12 (1%) 66 65	30, 62, 92, 135	0
1	B	644/757 (85%)	0.15	17 (2%) 56 52	30, 65, 92, 119	0
1	C	659/757 (87%)	0.12	21 (3%) 47 43	41, 60, 94, 127	1 (0%)
1	D	623/757 (82%)	0.35	28 (4%) 33 29	30, 77, 110, 137	0
All	All	2565/3028 (84%)	0.19	78 (3%) 50 45	30, 66, 99, 137	1 (0%)

The worst 5 of 78 RSRZ outliers are listed below:

Mol	Chain	Res	Type	RSRZ
1	D	179	VAL	4.3
1	D	636	PHE	3.9
1	D	149	VAL	3.8
1	D	195	THR	3.5
1	D	272	GLY	3.4

6.2 Non-standard residues in protein, DNA, RNA chains [i](#)

There are no non-standard protein/DNA/RNA residues in this entry.

6.3 Carbohydrates [i](#)

There are no monosaccharides in this entry.

6.4 Ligands [i](#)

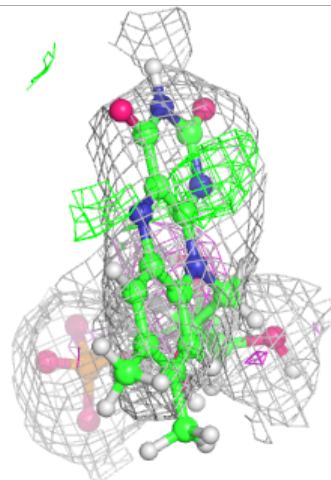
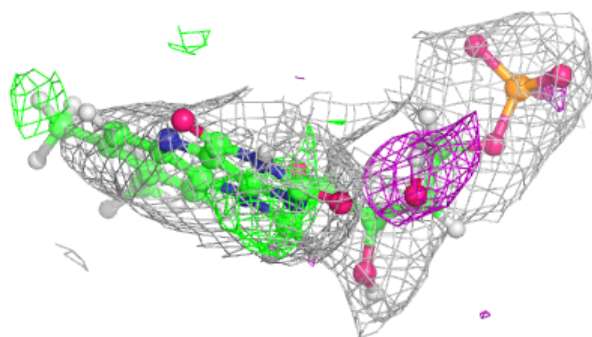
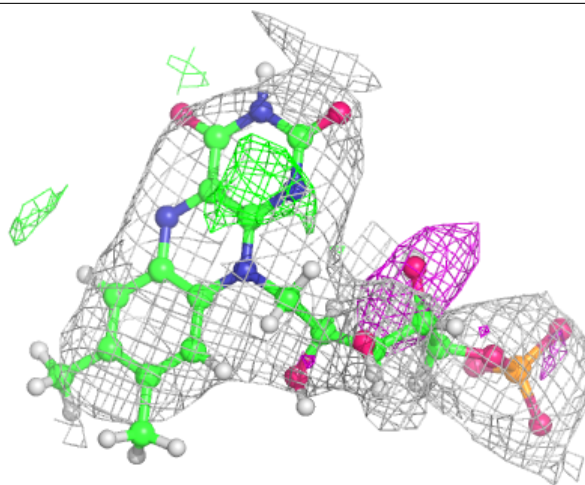
In the following table, the Atoms column lists the number of modelled atoms in the group and the number defined in the chemical component dictionary. The B-factors column lists the minimum, median, 95th percentile and maximum values of B factors of atoms in the group. The column labelled ‘Q< 0.9’ lists the number of atoms with occupancy less than 0.9.

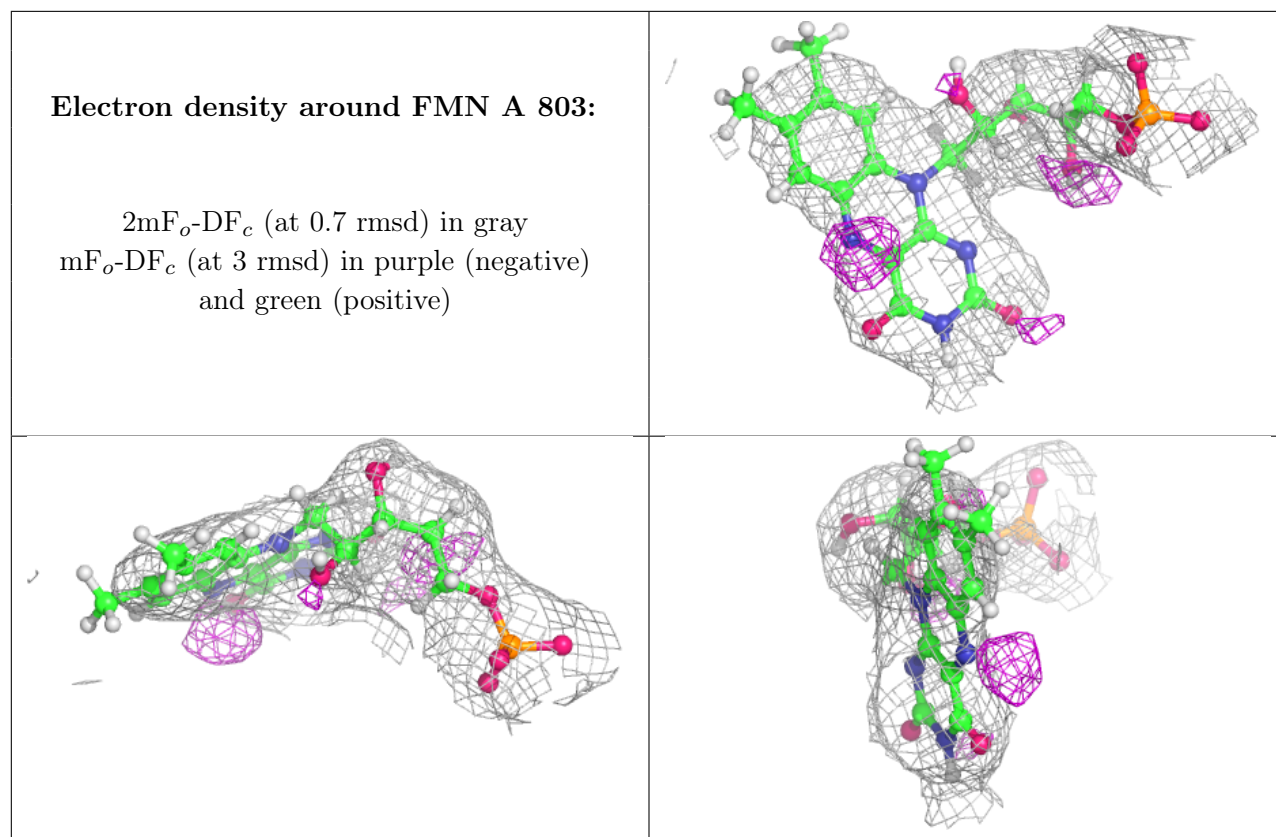
Mol	Type	Chain	Res	Atoms	RSCC	RSR	B-factors(\AA^2)	Q<0.9
3	BDP	B	804	13/13	0.77	0.33	55,67,95,98	22
2	GOL	B	801	6/6	0.80	0.40	76,103,117,120	0
3	BDP	D	801	13/13	0.80	0.24	83,100,127,142	22
2	GOL	A	801	6/6	0.84	0.36	64,91,118,118	0
2	GOL	B	803	6/6	0.84	0.34	80,114,125,128	0
4	FMN	C	1604	31/31	0.85	0.23	78,91,104,123	0
2	GOL	D	802	6/6	0.86	0.27	67,97,115,115	0
4	FMN	A	803	31/31	0.87	0.20	77,87,96,111	0
2	GOL	C	1602	6/6	0.88	0.32	68,105,116,142	0
4	FMN	B	805	31/31	0.90	0.20	63,78,93,102	0
3	BDP	A	802	13/13	0.90	0.21	53,67,86,101	22
2	GOL	C	1603	6/6	0.91	0.33	55,82,102,102	0
5	ZG5	C	1601	33/33	0.91	0.26	43,67,97,107	0
2	GOL	B	802	6/6	0.96	0.27	55,83,98,101	0

The following is a graphical depiction of the model fit to experimental electron density of all instances of the Ligand of Interest. In addition, ligands with molecular weight > 250 and outliers as shown on the geometry validation Tables will also be included. Each fit is shown from different orientation to approximate a three-dimensional view.

Electron density around FMN C 1604:

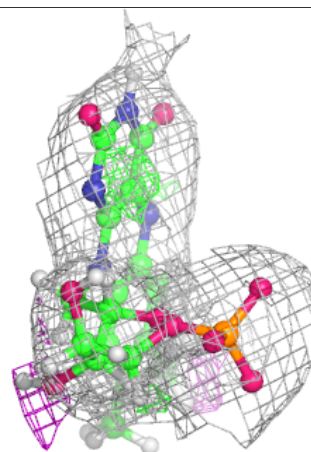
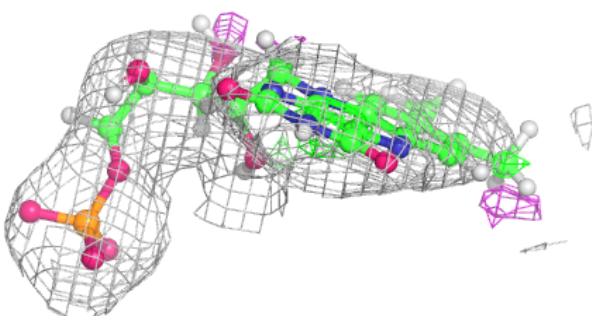
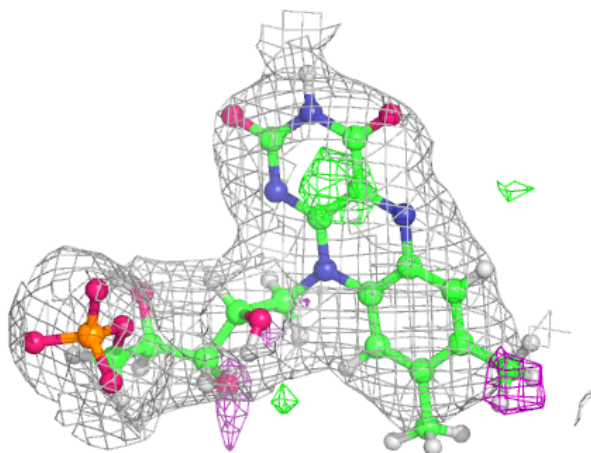
$2mF_o-DF_c$ (at 0.7 rmsd) in gray
 mF_o-DF_c (at 3 rmsd) in purple (negative)
and green (positive)

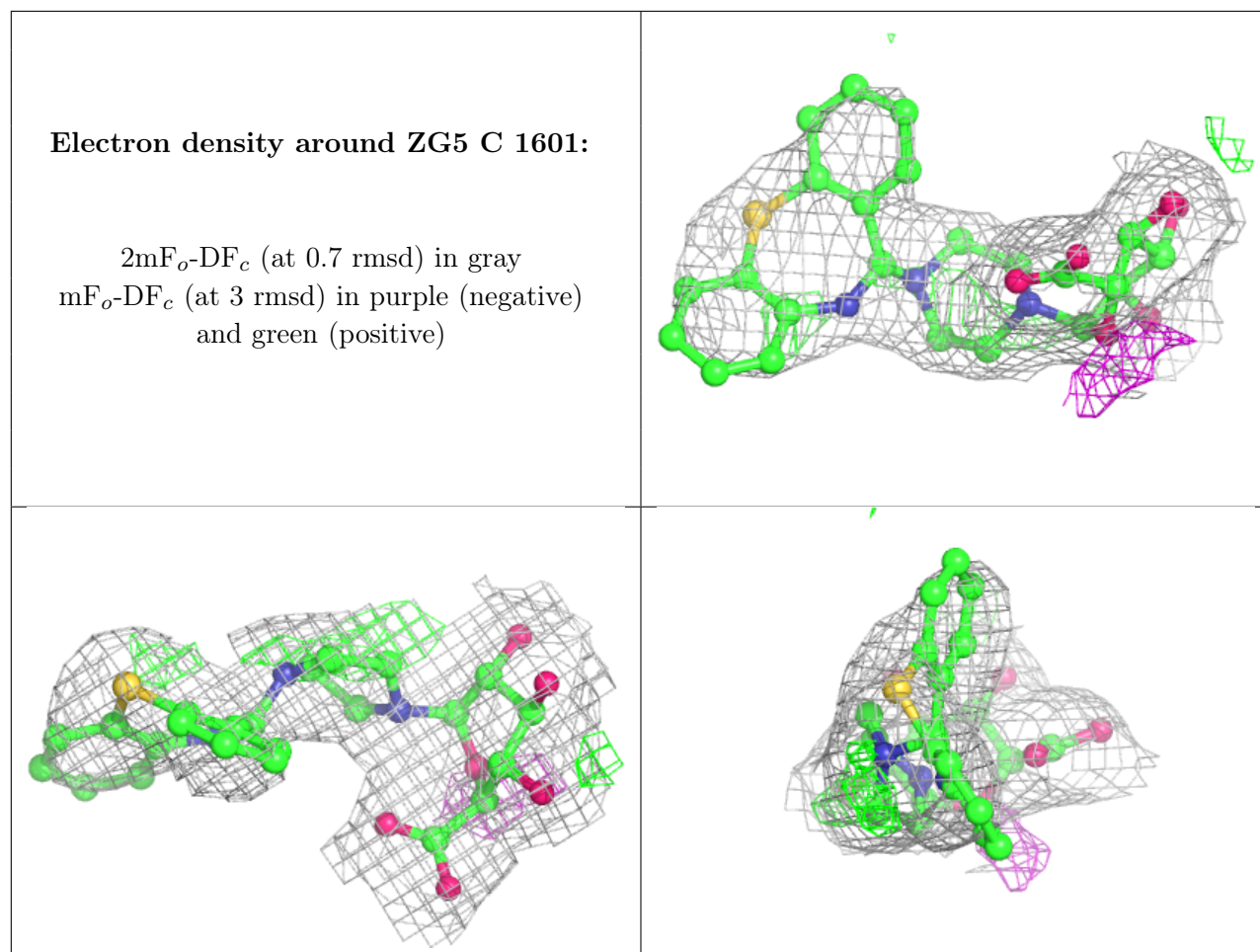




Electron density around FMN B 805:

$2mF_o-DF_c$ (at 0.7 rmsd) in gray
 mF_o-DF_c (at 3 rmsd) in purple (negative)
and green (positive)





6.5 Other polymers [i](#)

There are no such residues in this entry.