



# Full wwPDB X-ray Structure Validation Report ⓘ

Sep 6, 2023 – 05:37 PM EDT

PDB ID : 4GD7  
Title : Wild-Type Human Thymidylate Synthase with bound Purpurogallin  
Authors : Celeste, L.R.; Lebioda, L.  
Deposited on : 2012-07-31  
Resolution : 2.29 Å(reported)

This is a Full wwPDB X-ray Structure Validation Report for a publicly released PDB entry.

We welcome your comments at [validation@mail.wwpdb.org](mailto:validation@mail.wwpdb.org)

A user guide is available at

<https://www.wwpdb.org/validation/2017/XrayValidationReportHelp>

with specific help available everywhere you see the ⓘ symbol.

The types of validation reports are described at

<http://www.wwpdb.org/validation/2017/FAQs#types>.

---

The following versions of software and data (see [references ⓘ](#)) were used in the production of this report:

MolProbity : 4.02b-467  
Mogul : 1.8.5 (274361), CSD as541be (2020)  
Xtriage (Phenix) : 1.13  
EDS : 2.35  
Percentile statistics : 20191225.v01 (using entries in the PDB archive December 25th 2019)  
Refmac : 5.8.0158  
CCP4 : 7.0.044 (Gargrove)  
Ideal geometry (proteins) : Engh & Huber (2001)  
Ideal geometry (DNA, RNA) : Parkinson et al. (1996)  
Validation Pipeline (wwPDB-VP) : 2.35

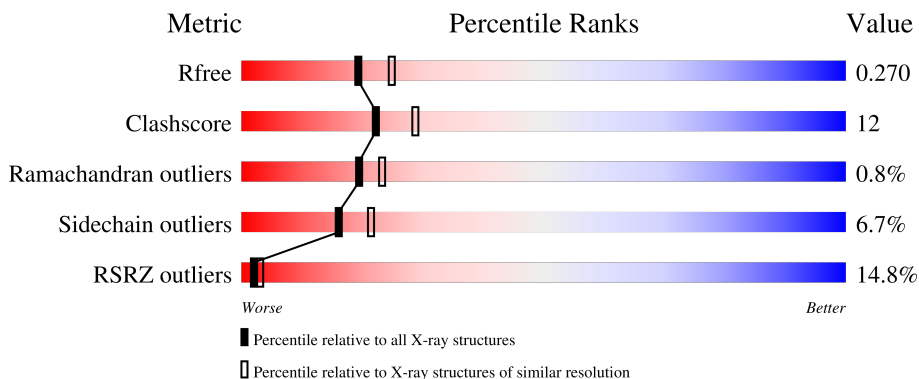
# 1 Overall quality at a glance

The following experimental techniques were used to determine the structure:

*X-RAY DIFFRACTION*

The reported resolution of this entry is 2.29 Å.

Percentile scores (ranging between 0-100) for global validation metrics of the entry are shown in the following graphic. The table shows the number of entries on which the scores are based.



Metric	Whole archive (#Entries)	Similar resolution (#Entries, resolution range(Å))
$R_{free}$	130704	5042 (2.30-2.30)
Clashscore	141614	5643 (2.30-2.30)
Ramachandran outliers	138981	5575 (2.30-2.30)
Sidechain outliers	138945	5575 (2.30-2.30)
RSRZ outliers	127900	4938 (2.30-2.30)

The table below summarises the geometric issues observed across the polymeric chains and their fit to the electron density. The red, orange, yellow and green segments of the lower bar indicate the fraction of residues that contain outliers for  $\geq 3$ , 2, 1 and 0 types of geometric quality criteria respectively. A grey segment represents the fraction of residues that are not modelled. The numeric value for each fraction is indicated below the corresponding segment, with a dot representing fractions  $\leq 5\%$ . The upper red bar (where present) indicates the fraction of residues that have poor fit to the electron density. The numeric value is given above the bar.

Mol	Chain	Length	Quality of chain
1	A	313	

The following table lists non-polymeric compounds, carbohydrate monomers and non-standard residues in protein, DNA, RNA chains that are outliers for geometric or electron-density-fit criteria:

Mol	Type	Chain	Res	Chirality	Geometry	Clashes	Electron density
3	TIY	A	402	-	X	-	X

## 2 Entry composition [i](#)

There are 5 unique types of molecules in this entry. The entry contains 2264 atoms, of which 0 are hydrogens and 0 are deuteriums.

In the tables below, the ZeroOcc column contains the number of atoms modelled with zero occupancy, the AltConf column contains the number of residues with at least one atom in alternate conformation and the Trace column contains the number of residues modelled with at most 2 atoms.

- Molecule 1 is a protein called Thymidylate Synthase.

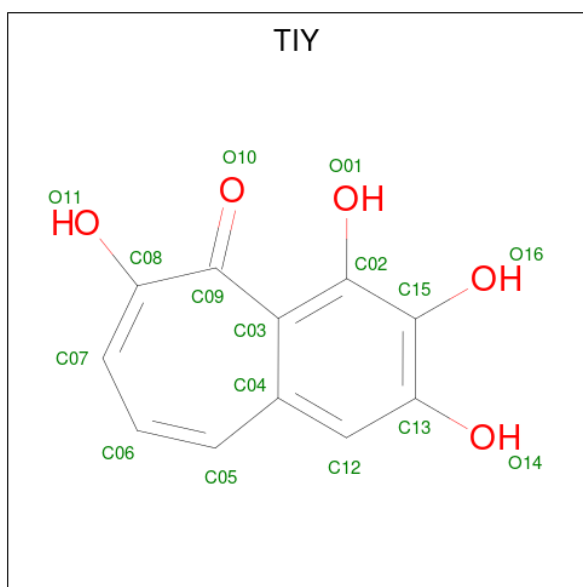
Mol	Chain	Residues	Atoms					ZeroOcc	AltConf	Trace
			Total	C	N	O	S			
1	A	273	2167	1382	372	399	14	0	0	0

- Molecule 2 is 1,2-ETHANEDIOL (three-letter code: EDO) (formula: C<sub>2</sub>H<sub>6</sub>O<sub>2</sub>).



Mol	Chain	Residues	Atoms			ZeroOcc	AltConf
			Total	C	O		
2	A	1	4	2	2	0	0

- Molecule 3 is 2,3,4,6-tetrahydroxy-5H-benzo[7]annulen-5-one (three-letter code: TIY) (formula: C<sub>11</sub>H<sub>8</sub>O<sub>5</sub>).



Mol	Chain	Residues	Atoms		ZeroOcc	AltConf
3	A	1	Total	C O	0	0
			16	11 5		

- Molecule 4 is SULFATE ION (three-letter code: SO<sub>4</sub>) (formula: O<sub>4</sub>S).



Mol	Chain	Residues	Atoms		ZeroOcc	AltConf
4	A	1	Total	O S	0	0
			5	4 1		
4	A	1	Total	O S	0	0
			5	4 1		
4	A	1	Total	O S	0	0
			5	4 1		

- Molecule 5 is water.

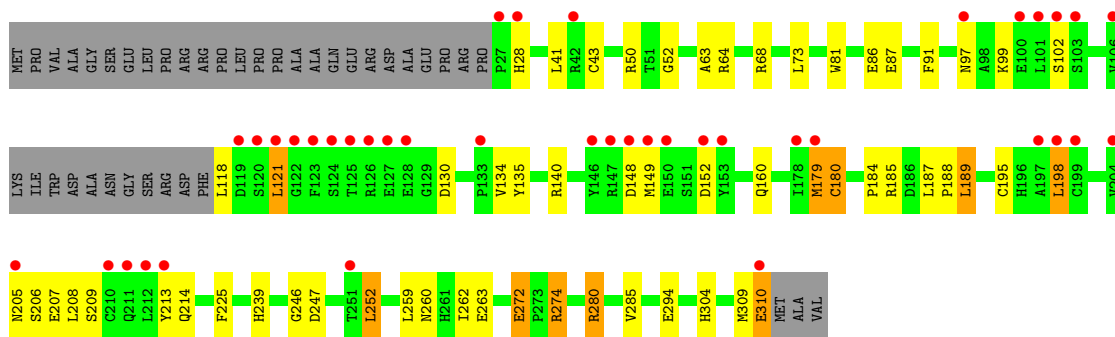
Mol	Chain	Residues	Atoms	ZeroOcc	AltConf
5	A	62	Total O 62 62	0	0

### 3 Residue-property plots [i](#)

These plots are drawn for all protein, RNA, DNA and oligosaccharide chains in the entry. The first graphic for a chain summarises the proportions of the various outlier classes displayed in the second graphic. The second graphic shows the sequence view annotated by issues in geometry and electron density. Residues are color-coded according to the number of geometric quality criteria for which they contain at least one outlier: green = 0, yellow = 1, orange = 2 and red = 3 or more. A red dot above a residue indicates a poor fit to the electron density ( $RSRZ > 2$ ). Stretches of 2 or more consecutive residues without any outlier are shown as a green connector. Residues present in the sample, but not in the model, are shown in grey.

- Molecule 1: Thymidylate Synthase

Chain A: 



## 4 Data and refinement statistics i

Property	Value	Source
Space group	P 31 2 1	Depositor
Cell constants a, b, c, $\alpha$ , $\beta$ , $\gamma$	95.78Å 95.78Å 81.68Å 90.00° 90.00° 120.00°	Depositor
Resolution (Å)	50.00 – 2.29 41.31 – 2.29	Depositor EDS
% Data completeness (in resolution range)	99.5 (50.00-2.29) 99.5 (41.31-2.29)	Depositor EDS
$R_{merge}$	0.04	Depositor
$R_{sym}$	(Not available)	Depositor
$\langle I/\sigma(I) \rangle$ <sup>1</sup>	9.17 (at 2.29Å)	Xtrriage
Refinement program	REFMAC	Depositor
R, $R_{free}$	0.238 , 0.275 0.231 , 0.270	Depositor DCC
$R_{free}$ test set	1014 reflections (5.13%)	wwPDB-VP
Wilson B-factor (Å <sup>2</sup> )	40.5	Xtrriage
Anisotropy	0.694	Xtrriage
Bulk solvent $k_{sol}$ (e/Å <sup>3</sup> ), $B_{sol}$ (Å <sup>2</sup> )	0.35 , 42.9	EDS
L-test for twinning <sup>2</sup>	$\langle  L  \rangle = 0.50$ , $\langle L^2 \rangle = 0.33$	Xtrriage
Estimated twinning fraction	0.030 for -h,-k,l	Xtrriage
$F_o, F_c$ correlation	0.94	EDS
Total number of atoms	2264	wwPDB-VP
Average B, all atoms (Å <sup>2</sup> )	45.0	wwPDB-VP

Xtrriage's analysis on translational NCS is as follows: *The largest off-origin peak in the Patterson function is 3.86% of the height of the origin peak. No significant pseudotranslation is detected.*

<sup>1</sup>Intensities estimated from amplitudes.

<sup>2</sup>Theoretical values of  $\langle |L| \rangle$ ,  $\langle L^2 \rangle$  for acentric reflections are 0.5, 0.333 respectively for untwinned datasets, and 0.375, 0.2 for perfectly twinned datasets.

## 5 Model quality [i](#)

### 5.1 Standard geometry [i](#)

Bond lengths and bond angles in the following residue types are not validated in this section: TIY, CSD, EDO, SO4, CME

The Z score for a bond length (or angle) is the number of standard deviations the observed value is removed from the expected value. A bond length (or angle) with  $|Z| > 5$  is considered an outlier worth inspection. RMSZ is the root-mean-square of all Z scores of the bond lengths (or angles).

Mol	Chain	Bond lengths		Bond angles	
		RMSZ	# $ Z  > 5$	RMSZ	# $ Z  > 5$
1	A	0.99	2/2191 (0.1%)	0.93	1/2970 (0.0%)

All (2) bond length outliers are listed below:

Mol	Chain	Res	Type	Atoms	Z	Observed(Å)	Ideal(Å)
1	A	64	ARG	CG-CD	5.54	1.65	1.51
1	A	63	ALA	CA-CB	5.53	1.64	1.52

All (1) bond angle outliers are listed below:

Mol	Chain	Res	Type	Atoms	Z	Observed( $^{\circ}$ )	Ideal( $^{\circ}$ )
1	A	274	ARG	NE-CZ-NH1	-5.40	117.60	120.30

There are no chirality outliers.

There are no planarity outliers.

### 5.2 Too-close contacts [i](#)

In the following table, the Non-H and H(model) columns list the number of non-hydrogen atoms and hydrogen atoms in the chain respectively. The H(added) column lists the number of hydrogen atoms added and optimized by MolProbity. The Clashes column lists the number of clashes within the asymmetric unit, whereas Symm-Clashes lists symmetry-related clashes.

Mol	Chain	Non-H	H(model)	H(added)	Clashes	Symm-Clashes
1	A	2167	0	2079	47	0
2	A	4	0	6	2	0
3	A	16	0	6	5	0
4	A	15	0	0	0	0
5	A	62	0	0	1	0

*Continued on next page...*



*Continued from previous page...*

Mol	Chain	Non-H	H(model)	H(added)	Clashes	Symm-Clashes
All	All	2264	0	2091	50	0

The all-atom clashscore is defined as the number of clashes found per 1000 atoms (including hydrogen atoms). The all-atom clashscore for this structure is 12.

All (50) close contacts within the same asymmetric unit are listed below, sorted by their clash magnitude.

Atom-1	Atom-2	Interatomic distance (Å)	Clash overlap (Å)
3:A:402:TIY:C03	3:A:402:TIY:C09	1.77	1.57
1:A:252:LEU:HD22	2:A:401:EDO:H12	1.22	1.11
1:A:50:ARG:HH12	1:A:118:LEU:HD12	0.99	1.07
1:A:50:ARG:NH1	1:A:118:LEU:HD12	1.76	1.00
1:A:280:ARG:HH21	1:A:280:ARG:HG3	1.32	0.95
3:A:402:TIY:C09	3:A:402:TIY:C02	2.43	0.95
1:A:50:ARG:HH12	1:A:118:LEU:CD1	1.83	0.90
1:A:280:ARG:HH21	1:A:280:ARG:CG	1.89	0.84
1:A:68:ARG:HE	1:A:207:GLU:CD	1.83	0.82
1:A:239:HIS:HE1	1:A:285:VAL:H	1.30	0.80
1:A:134:VAL:HG22	1:A:184:PRO:HB3	1.65	0.76
1:A:180:CME:HZ3	3:A:402:TIY:H12	1.73	0.69
1:A:68:ARG:NE	1:A:207:GLU:OE2	2.26	0.67
1:A:252:LEU:CD2	2:A:401:EDO:H12	2.14	0.67
1:A:185:ARG:O	1:A:189:LEU:HD13	1.96	0.65
1:A:280:ARG:CG	1:A:280:ARG:NH2	2.57	0.61
1:A:68:ARG:NH2	1:A:207:GLU:OE1	2.32	0.60
1:A:260:ASN:ND2	1:A:310:GLU:HB2	2.19	0.58
1:A:208:LEU:O	1:A:246:GLY:N	2.32	0.58
1:A:280:ARG:HG3	1:A:280:ARG:NH2	2.11	0.54
1:A:41:LEU:HD22	1:A:262:ILE:HG23	1.91	0.53
1:A:239:HIS:CE1	1:A:285:VAL:H	2.18	0.53
1:A:160:GLN:HB3	1:A:179:MET:HG3	1.92	0.52
1:A:73:LEU:HD21	1:A:81:TRP:HB2	1.91	0.51
3:A:402:TIY:C09	3:A:402:TIY:C04	2.75	0.51
1:A:198:LEU:HD12	1:A:198:LEU:C	2.31	0.51
1:A:134:VAL:HG13	1:A:135:TYR:CD1	2.45	0.50
1:A:87:GLU:O	1:A:87:GLU:HG2	2.14	0.48
1:A:213:TYR:CD1	1:A:213:TYR:C	2.87	0.48
1:A:260:ASN:ND2	1:A:310:GLU:CB	2.78	0.47
1:A:130:ASP:OD2	1:A:149:MET:HG2	2.14	0.47
1:A:205:ASN:O	1:A:206:SER:HB2	2.15	0.47
1:A:272:GLU:O	1:A:304:HIS:HE1	1.98	0.47

*Continued on next page...*

Continued from previous page...

Atom-1	Atom-2	Interatomic distance (Å)	Clash overlap (Å)
1:A:134:VAL:HG22	1:A:184:PRO:CB	2.40	0.45
1:A:152:ASP:C	1:A:152:ASP:OD2	2.55	0.45
1:A:260:ASN:HD22	1:A:310:GLU:HB2	1.81	0.44
1:A:294:GLU:CD	1:A:294:GLU:H	2.21	0.43
1:A:87:GLU:OE1	1:A:225:PHE:HE2	2.02	0.43
1:A:179:MET:HB2	1:A:179:MET:HE2	1.49	0.43
1:A:180:CME:HZ3	3:A:402:TIY:C12	2.43	0.42
1:A:239:HIS:HE1	1:A:285:VAL:N	2.06	0.42
1:A:99:LYS:HA	1:A:102:SER:HB2	2.01	0.42
1:A:121:LEU:HD12	1:A:121:LEU:H	1.86	0.41
1:A:187:LEU:HB2	1:A:188:PRO:CD	2.50	0.41
1:A:187:LEU:N	1:A:188:PRO:HD2	2.35	0.41
1:A:263:GLU:OE2	5:A:555:HOH:O	2.22	0.41
1:A:209:SER:HA	1:A:247:ASP:O	2.21	0.41
1:A:140:ARG:HA	1:A:140:ARG:HD2	1.85	0.41
1:A:134:VAL:CG2	1:A:184:PRO:HB3	2.44	0.41
1:A:214:GLN:HB2	1:A:252:LEU:HD12	2.02	0.40

There are no symmetry-related clashes.

## 5.3 Torsion angles [i](#)

### 5.3.1 Protein backbone [i](#)

In the following table, the Percentiles column shows the percent Ramachandran outliers of the chain as a percentile score with respect to all X-ray entries followed by that with respect to entries of similar resolution.

The Analysed column shows the number of residues for which the backbone conformation was analysed, and the total number of residues.

Mol	Chain	Analysed	Favoured	Allowed	Outliers	Percentiles
1	A	266/313 (85%)	246 (92%)	18 (7%)	2 (1%)	19 23

All (2) Ramachandran outliers are listed below:

Mol	Chain	Res	Type
1	A	52	GLY
1	A	121	LEU

### 5.3.2 Protein sidechains

In the following table, the Percentiles column shows the percent sidechain outliers of the chain as a percentile score with respect to all X-ray entries followed by that with respect to entries of similar resolution.

The Analysed column shows the number of residues for which the sidechain conformation was analysed, and the total number of residues.

Mol	Chain	Analysed	Rotameric	Outliers	Percentiles
1	A	223/268 (83%)	208 (93%)	15 (7%)	<b>16</b> <b>21</b>

All (15) residues with a non-rotameric sidechain are listed below:

Mol	Chain	Res	Type
1	A	28	HIS
1	A	86	GLU
1	A	91	PHE
1	A	97	ASN
1	A	148	ASP
1	A	179	MET
1	A	189	LEU
1	A	198	LEU
1	A	252	LEU
1	A	259	LEU
1	A	272	GLU
1	A	274	ARG
1	A	280	ARG
1	A	309	MET
1	A	310	GLU

Sometimes sidechains can be flipped to improve hydrogen bonding and reduce clashes. All (7) such sidechains are listed below:

Mol	Chain	Res	Type
1	A	97	ASN
1	A	171	ASN
1	A	205	ASN
1	A	239	HIS
1	A	260	ASN
1	A	270	GLN
1	A	304	HIS

### 5.3.3 RNA [i](#)

There are no RNA molecules in this entry.

## 5.4 Non-standard residues in protein, DNA, RNA chains [i](#)

3 non-standard protein/DNA/RNA residues are modelled in this entry.

In the following table, the Counts columns list the number of bonds (or angles) for which Mogul statistics could be retrieved, the number of bonds (or angles) that are observed in the model and the number of bonds (or angles) that are defined in the Chemical Component Dictionary. The Link column lists molecule types, if any, to which the group is linked. The Z score for a bond length (or angle) is the number of standard deviations the observed value is removed from the expected value. A bond length (or angle) with  $|Z| > 2$  is considered an outlier worth inspection. RMSZ is the root-mean-square of all Z scores of the bond lengths (or angles).

Mol	Type	Chain	Res	Link	Bond lengths			Bond angles		
					Counts	RMSZ	# Z  > 2	Counts	RMSZ	# Z  > 2
1	CME	A	180	1	8,9,10	0.77	0	5,9,11	1.72	1 (20%)
1	CME	A	43	1	8,9,10	0.74	0	5,9,11	1.93	1 (20%)
1	CSD	A	195	1	3,7,8	0.99	0	1,8,10	2.09	1 (100%)

In the following table, the Chirals column lists the number of chiral outliers, the number of chiral centers analysed, the number of these observed in the model and the number defined in the Chemical Component Dictionary. Similar counts are reported in the Torsion and Rings columns. '-' means no outliers of that kind were identified.

Mol	Type	Chain	Res	Link	Chirals	Torsions	Rings
1	CME	A	180	1	-	2/5/8/10	-
1	CME	A	43	1	-	1/5/8/10	-
1	CSD	A	195	1	-	1/2/6/8	-

There are no bond length outliers.

All (3) bond angle outliers are listed below:

Mol	Chain	Res	Type	Atoms	Z	Observed(°)	Ideal(°)
1	A	43	CME	CE-SD-SG	4.23	122.92	103.45
1	A	180	CME	CE-SD-SG	3.09	117.67	103.45
1	A	195	CSD	OD1-SG-CB	-2.09	101.57	105.54

There are no chirality outliers.

All (4) torsion outliers are listed below:

Mol	Chain	Res	Type	Atoms
1	A	43	CME	CZ-CE-SD-SG
1	A	180	CME	CZ-CE-SD-SG
1	A	180	CME	SD-CE-CZ-OH
1	A	195	CSD	CA-CB-SG-OD1

There are no ring outliers.

1 monomer is involved in 2 short contacts:

Mol	Chain	Res	Type	Clashes	Symm-Clashes
1	A	180	CME	2	0

## 5.5 Carbohydrates [i](#)

There are no monosaccharides in this entry.

## 5.6 Ligand geometry [i](#)

5 ligands are modelled in this entry.

In the following table, the Counts columns list the number of bonds (or angles) for which Mogul statistics could be retrieved, the number of bonds (or angles) that are observed in the model and the number of bonds (or angles) that are defined in the Chemical Component Dictionary. The Link column lists molecule types, if any, to which the group is linked. The Z score for a bond length (or angle) is the number of standard deviations the observed value is removed from the expected value. A bond length (or angle) with  $|Z| > 2$  is considered an outlier worth inspection. RMSZ is the root-mean-square of all Z scores of the bond lengths (or angles).

Mol	Type	Chain	Res	Link	Bond lengths			Bond angles		
					Counts	RMSZ	# Z  > 2	Counts	RMSZ	# Z  > 2
2	EDO	A	401	-	3,3,3	0.70	0	2,2,2	0.07	0
4	SO4	A	405	-	4,4,4	0.20	0	6,6,6	0.30	0
4	SO4	A	403	-	4,4,4	0.17	0	6,6,6	0.67	0
4	SO4	A	404	-	4,4,4	0.33	0	6,6,6	0.37	0
3	TIY	A	402	-	17,17,17	7.72	11 (64%)	23,25,25	11.68	16 (69%)

In the following table, the Chirals column lists the number of chiral outliers, the number of chiral centers analysed, the number of these observed in the model and the number defined in the Chemical Component Dictionary. Similar counts are reported in the Torsion and Rings columns. '-' means no outliers of that kind were identified.

Mol	Type	Chain	Res	Link	Chirals	Torsions	Rings
3	TIY	A	402	-	-	-	0/2/2/2

*Continued on next page...*

Continued from previous page...

Mol	Type	Chain	Res	Link	Chirals	Torsions	Rings
2	EDO	A	401	-	-	0/1/1/1	-

All (11) bond length outliers are listed below:

Mol	Chain	Res	Type	Atoms	Z	Observed(Å)	Ideal(Å)
3	A	402	TIY	C12-C13	23.88	1.72	1.38
3	A	402	TIY	C12-C04	-16.16	1.13	1.40
3	A	402	TIY	O01-C02	7.64	1.54	1.37
3	A	402	TIY	C03-C09	4.95	1.77	1.49
3	A	402	TIY	C03-C02	4.66	1.50	1.41
3	A	402	TIY	C07-C08	-4.58	1.31	1.37
3	A	402	TIY	C06-C07	4.36	1.52	1.40
3	A	402	TIY	C02-C15	3.61	1.46	1.39
3	A	402	TIY	C03-C04	-2.98	1.37	1.42
3	A	402	TIY	C08-C09	-2.82	1.37	1.45
3	A	402	TIY	O10-C09	2.23	1.28	1.23

All (16) bond angle outliers are listed below:

Mol	Chain	Res	Type	Atoms	Z	Observed(°)	Ideal(°)
3	A	402	TIY	C13-C15-C02	-35.84	97.88	119.69
3	A	402	TIY	C12-C13-C15	27.20	139.18	120.47
3	A	402	TIY	C04-C03-C02	20.53	142.20	119.31
3	A	402	TIY	C07-C08-C09	-12.85	107.41	129.15
3	A	402	TIY	C12-C04-C03	-9.58	107.67	119.99
3	A	402	TIY	O11-C08-C09	9.15	127.56	112.91
3	A	402	TIY	O16-C15-C02	8.41	141.76	118.63
3	A	402	TIY	C03-C09-C08	6.99	137.68	120.21
3	A	402	TIY	O10-C09-C08	-6.26	104.46	116.57
3	A	402	TIY	O14-C13-C12	-6.13	103.04	119.46
3	A	402	TIY	C12-C04-C05	5.88	128.36	117.22
3	A	402	TIY	O11-C08-C07	5.44	124.65	116.64
3	A	402	TIY	C04-C12-C13	-5.41	115.31	120.95
3	A	402	TIY	C03-C02-C15	-4.79	115.73	120.27
3	A	402	TIY	O01-C02-C15	4.36	130.63	118.63
3	A	402	TIY	O01-C02-C03	-3.44	113.30	120.98

There are no chirality outliers.

There are no torsion outliers.

There are no ring outliers.

2 monomers are involved in 7 short contacts:

Mol	Chain	Res	Type	Clashes	Symm-Clashes
2	A	401	EDO	2	0
3	A	402	TIY	5	0

## 5.7 Other polymers [i](#)

There are no such residues in this entry.

## 5.8 Polymer linkage issues [i](#)

There are no chain breaks in this entry.

## 6 Fit of model and data

### 6.1 Protein, DNA and RNA chains

In the following table, the column labelled ‘#RSRZ> 2’ contains the number (and percentage) of RSRZ outliers, followed by percent RSRZ outliers for the chain as percentile scores relative to all X-ray entries and entries of similar resolution. The OWAB column contains the minimum, median, 95<sup>th</sup> percentile and maximum values of the occupancy-weighted average B-factor per residue. The column labelled ‘Q< 0.9’ lists the number of (and percentage) of residues with an average occupancy less than 0.9.

Mol	Chain	Analysed	<RSRZ>	#RSRZ>2	OWAB(Å <sup>2</sup> )	Q<0.9
1	A	270/313 (86%)	0.58	40 (14%) <b>2</b> <b>3</b>	22, 41, 78, 95	0

All (40) RSRZ outliers are listed below:

Mol	Chain	Res	Type	RSRZ
1	A	103	SER	8.0
1	A	124	SER	7.3
1	A	123	PHE	6.9
1	A	121	LEU	5.9
1	A	122	GLY	5.4
1	A	102	SER	4.6
1	A	127	GLU	4.3
1	A	148	ASP	4.2
1	A	125	THR	4.1
1	A	147	ARG	4.0
1	A	27	PRO	3.8
1	A	126	ARG	3.7
1	A	198	LEU	3.6
1	A	119	ASP	3.6
1	A	199	CYS	3.5
1	A	42	ARG	3.5
1	A	120	SER	3.5
1	A	133	PRO	3.4
1	A	100	GLU	3.3
1	A	128	GLU	3.3
1	A	213	TYR	3.0
1	A	106	VAL	2.9
1	A	150	GLU	2.9
1	A	153	TYR	2.8
1	A	212	LEU	2.7
1	A	97	ASN	2.6
1	A	178	ILE	2.6

*Continued on next page...*



*Continued from previous page...*

Mol	Chain	Res	Type	RSRZ
1	A	146	TYR	2.6
1	A	28	HIS	2.6
1	A	251	THR	2.5
1	A	210	CYS	2.4
1	A	197	ALA	2.3
1	A	101	LEU	2.2
1	A	204	VAL	2.1
1	A	149	MET	2.1
1	A	179	MET	2.1
1	A	211	GLN	2.1
1	A	205	ASN	2.0
1	A	310	GLU	2.0
1	A	152	ASP	2.0

## 6.2 Non-standard residues in protein, DNA, RNA chains [i](#)

In the following table, the Atoms column lists the number of modelled atoms in the group and the number defined in the chemical component dictionary. The B-factors column lists the minimum, median, 95<sup>th</sup> percentile and maximum values of B factors of atoms in the group. The column labelled 'Q< 0.9' lists the number of atoms with occupancy less than 0.9.

Mol	Type	Chain	Res	Atoms	RSCC	RSR	B-factors(Å <sup>2</sup> )	Q<0.9
1	CME	A	43	10/11	0.91	0.20	45,47,68,68	0
1	CSD	A	195	8/9	0.94	0.24	32,38,46,49	0
1	CME	A	180	10/11	0.97	0.18	36,37,61,63	0

## 6.3 Carbohydrates [i](#)

There are no monosaccharides in this entry.

## 6.4 Ligands [i](#)

In the following table, the Atoms column lists the number of modelled atoms in the group and the number defined in the chemical component dictionary. The B-factors column lists the minimum, median, 95<sup>th</sup> percentile and maximum values of B factors of atoms in the group. The column labelled 'Q< 0.9' lists the number of atoms with occupancy less than 0.9.

Mol	Type	Chain	Res	Atoms	RSCC	RSR	B-factors(Å <sup>2</sup> )	Q<0.9
3	TIY	A	402	16/16	0.60	0.78	67,67,68,68	16
4	SO4	A	405	5/5	0.83	0.20	88,88,89,90	0

*Continued on next page...*

*Continued from previous page...*

Mol	Type	Chain	Res	Atoms	RSCC	RSR	B-factors( $\text{\AA}^2$ )	Q<0.9
2	EDO	A	401	4/4	0.95	0.14	33,37,37,42	0
4	SO4	A	403	5/5	0.96	0.12	57,59,60,61	0
4	SO4	A	404	5/5	0.99	0.15	49,51,53,56	0

## 6.5 Other polymers [i](#)

There are no such residues in this entry.