



Full wwPDB X-ray Structure Validation Report ⓘ

May 14, 2020 – 02:17 am BST

PDB ID : 6GA3
Title : Bacteriorhodopsin, 33 ms state, ensemble refinement
Authors : Nass Kovacs, G.; Colletier, J.-P.; Gruenbein, M.L.; Stensitzki, T.; Batyuk, A.; Carbajo, S.; Doak, R.B.; Ehrenberg, D.; Foucar, L.; Gasper, R.; Gorel, A.; Hilpert, M.; Kloos, M.; Koglin, J.; Reinstein, J.; Roome, C.M.; Schlesinger, R.; Seaberg, M.; Shoeman, R.L.; Stricker, M.; Boutet, S.; Haacke, S.; Heberle, J.; Domratcheva, T.; Barends, T.R.M.; Schlichting, I.
Deposited on : 2018-04-11
Resolution : 2.10 Å(reported)

This is a Full wwPDB X-ray Structure Validation Report for a publicly released PDB entry.

We welcome your comments at validation@mail.wwpdb.org

A user guide is available at

<https://www.wwpdb.org/validation/2017/XrayValidationReportHelp>

with specific help available everywhere you see the ⓘ symbol.

The following versions of software and data (see [references ⓘ](#)) were used in the production of this report:

MolProbity : 4.02b-467
Mogul : 1.8.5 (274361), CSD as541be (2020)
Xtriage (Phenix) : 1.13
EDS : 2.11
buster-report : 1.1.7 (2018)
Percentile statistics : 20191225.v01 (using entries in the PDB archive December 25th 2019)
Refmac : 5.8.0158
CCP4 : 7.0.044 (Gargrove)
Ideal geometry (proteins) : Engh & Huber (2001)
Ideal geometry (DNA, RNA) : Parkinson et al. (1996)
Validation Pipeline (wwPDB-VP) : 2.11

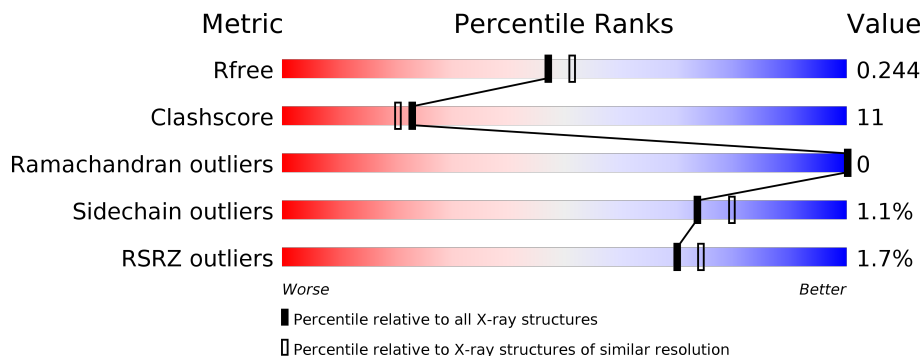
1 Overall quality at a glance

The following experimental techniques were used to determine the structure:

X-RAY DIFFRACTION

The reported resolution of this entry is 2.10 Å.

Percentile scores (ranging between 0-100) for global validation metrics of the entry are shown in the following graphic. The table shows the number of entries on which the scores are based.



Metric	Whole archive (#Entries)	Similar resolution (#Entries, resolution range(Å))
R_{free}	130704	5197 (2.10-2.10)
Clashscore	141614	5710 (2.10-2.10)
Ramachandran outliers	138981	5647 (2.10-2.10)
Sidechain outliers	138945	5648 (2.10-2.10)
RSRZ outliers	127900	5083 (2.10-2.10)

The table below summarises the geometric issues observed across the polymeric chains and their fit to the electron density. The red, orange, yellow and green segments on the lower bar indicate the fraction of residues that contain outliers for ≥ 3 , 2, 1 and 0 types of geometric quality criteria respectively. A grey segment represents the fraction of residues that are not modelled. The numeric value for each fraction is indicated below the corresponding segment, with a dot representing fractions $\leq 5\%$. The upper red bar (where present) indicates the fraction of residues that have poor fit to the electron density. The numeric value is given above the bar.

Mol	Chain	Length	Quality of chain
1	A	249	

2 Entry composition [i](#)

There are 12 unique types of molecules in this entry. The entry contains 2312 atoms, of which 0 are hydrogens and 0 are deuteriums.

In the tables below, the ZeroOcc column contains the number of atoms modelled with zero occupancy, the AltConf column contains the number of residues with at least one atom in alternate conformation and the Trace column contains the number of residues modelled with at most 2 atoms.

- Molecule 1 is a protein called Bacteriorhodopsin.

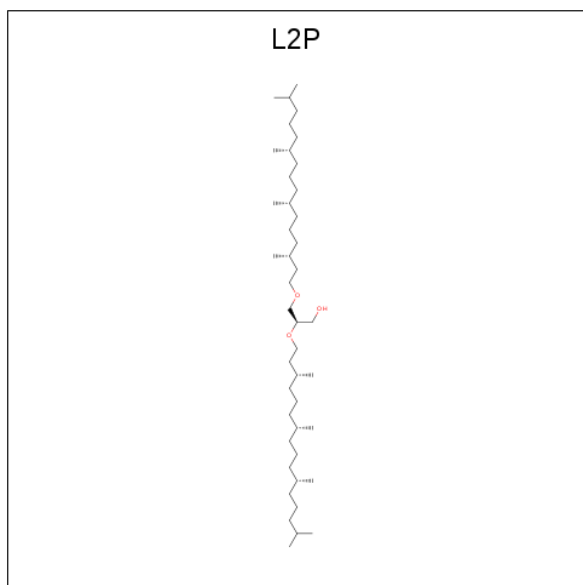
Mol	Chain	Residues	Atoms					ZeroOcc	AltConf	Trace
			Total	C	N	O	S			
1	A	231	2025	1358	309	348	10	0	30	0

- Molecule 2 is RETINAL (three-letter code: RET) (formula: $C_{20}H_{28}O$).



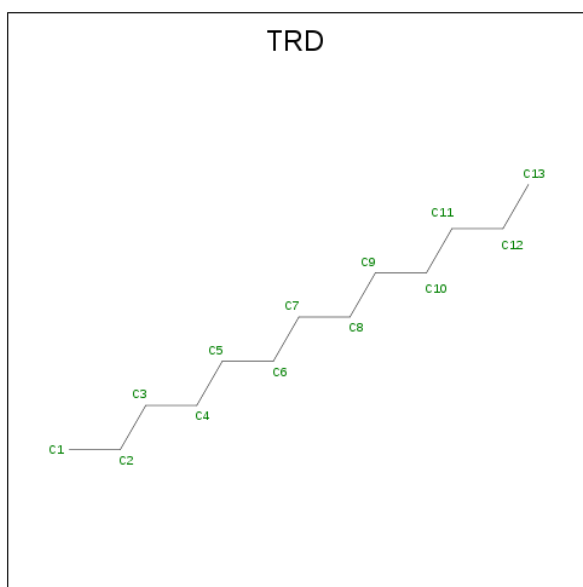
Mol	Chain	Residues	Atoms		ZeroOcc	AltConf
			Total	C		
2	A	1	40	40	0	1

- Molecule 3 is 2,3-DI-PHYTANYL-GLYCEROL (three-letter code: L2P) (formula: $C_{43}H_{88}O_3$).



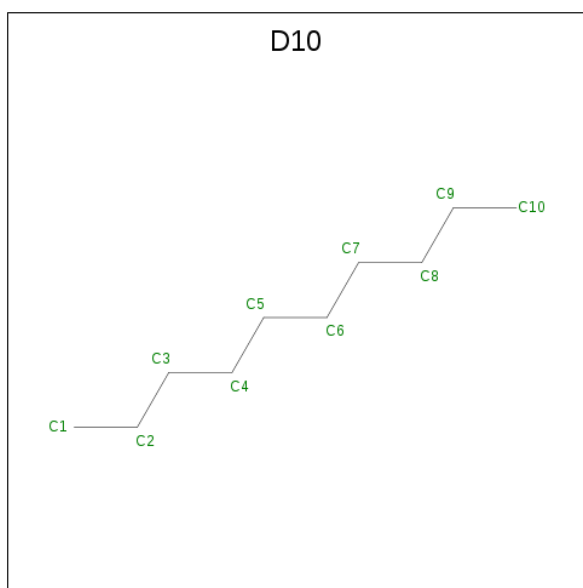
Mol	Chain	Residues	Atoms		ZeroOcc	AltConf
3	A	1	Total	C O	0	0
			25	23 2		
3	A	1	Total	C O	0	0
			22	21 1		
3	A	1	Total	C O	0	0
			46	43 3		

- Molecule 4 is TRIDECANE (three-letter code: TRD) (formula: C₁₃H₂₈).



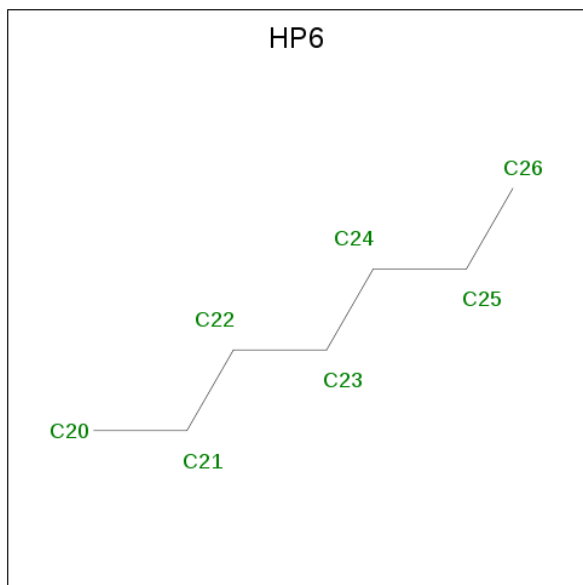
Mol	Chain	Residues	Atoms		ZeroOcc	AltConf
4	A	1	Total	C	0	0
			13	13		

- Molecule 5 is DECANE (three-letter code: D10) (formula: $C_{10}H_{22}$).



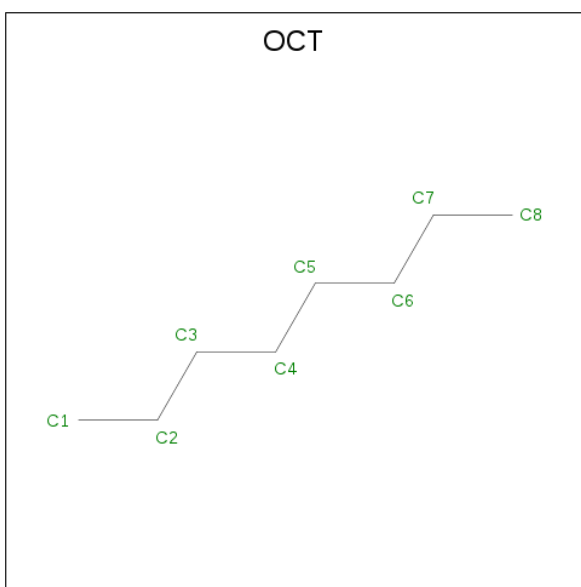
Mol	Chain	Residues	Atoms	ZeroOcc	AltConf
5	A	1	Total C 10 10	0	0

- Molecule 6 is HEPTANE (three-letter code: HP6) (formula: C_7H_{16}).



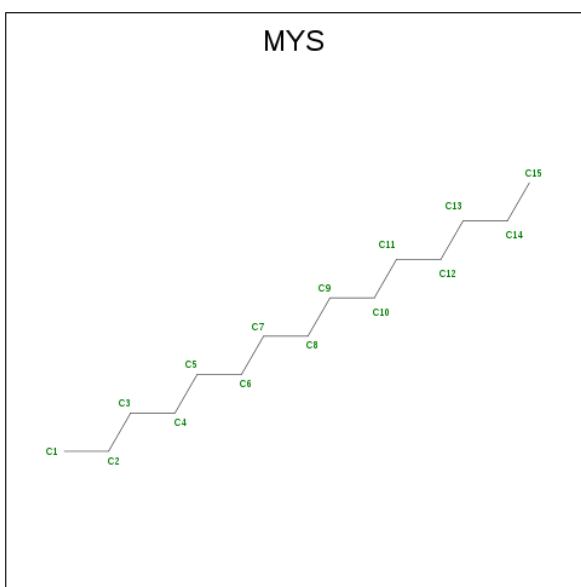
Mol	Chain	Residues	Atoms	ZeroOcc	AltConf
6	A	1	Total C 7 7	0	0

- Molecule 7 is N-OCTANE (three-letter code: OCT) (formula: C_8H_{18}).



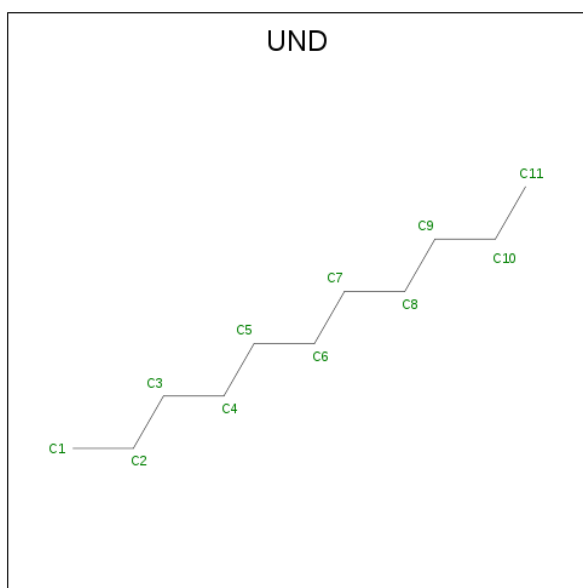
Mol	Chain	Residues	Atoms	ZeroOcc	AltConf
7	A	1	Total C 8 8	0	0
7	A	1	Total C 8 8	0	0
7	A	1	Total C 8 8	0	0

- Molecule 8 is PENTADECANE (three-letter code: MYS) (formula: C₁₅H₃₂).



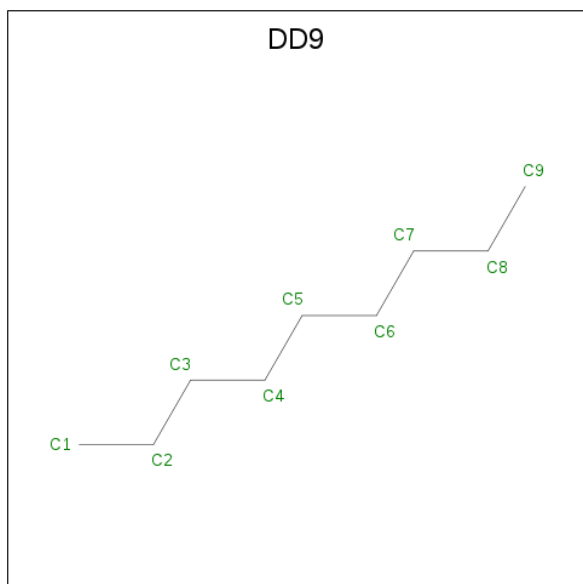
Mol	Chain	Residues	Atoms	ZeroOcc	AltConf
8	A	1	Total C 15 15	0	0

- Molecule 9 is UNDECANE (three-letter code: UND) (formula: $C_{11}H_{24}$).



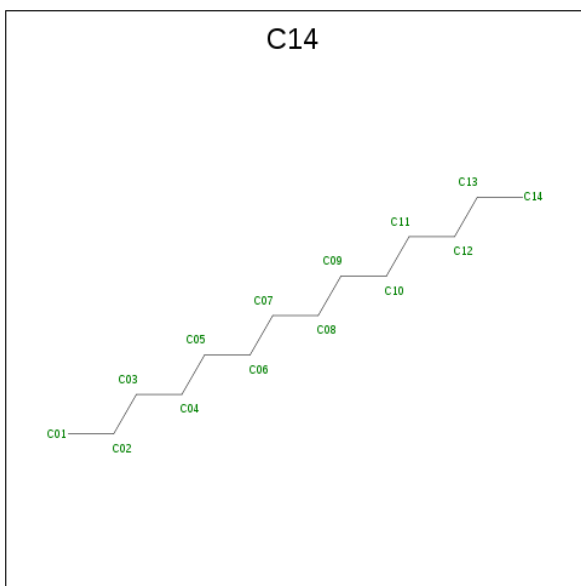
Mol	Chain	Residues	Atoms	ZeroOcc	AltConf
9	A	1	Total C 11 11	0	0
9	A	1	Total C 11 11	0	0

- Molecule 10 is nonane (three-letter code: DD9) (formula: C_9H_{20}).



Mol	Chain	Residues	Atoms	ZeroOcc	AltConf
10	A	1	Total C 9 9	0	0

- Molecule 11 is TETRADECANE (three-letter code: C14) (formula: C₁₄H₃₀).



Mol	Chain	Residues	Atoms	ZeroOcc	AltConf
11	A	1	Total C 14 14	0	0

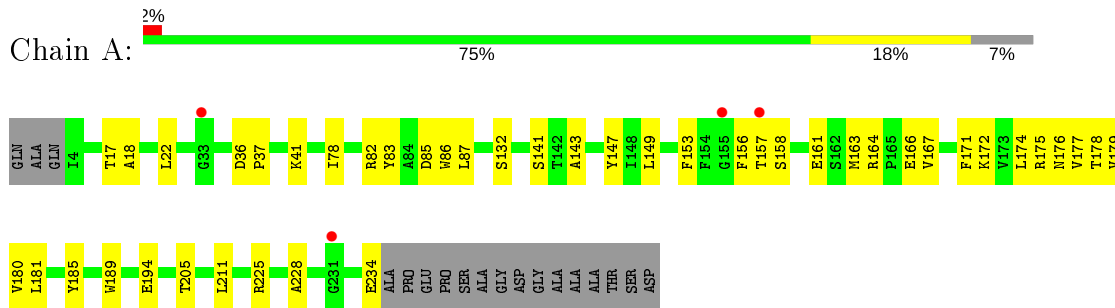
- Molecule 12 is water.

Mol	Chain	Residues	Atoms	ZeroOcc	AltConf
12	A	38	Total O 40 40	0	5

3 Residue-property plots [i](#)

These plots are drawn for all protein, RNA and DNA chains in the entry. The first graphic for a chain summarises the proportions of the various outlier classes displayed in the second graphic. The second graphic shows the sequence view annotated by issues in geometry and electron density. Residues are color-coded according to the number of geometric quality criteria for which they contain at least one outlier: green = 0, yellow = 1, orange = 2 and red = 3 or more. A red dot above a residue indicates a poor fit to the electron density ($RSRZ > 2$). Stretches of 2 or more consecutive residues without any outlier are shown as a green connector. Residues present in the sample, but not in the model, are shown in grey.

- Molecule 1: Bacteriorhodopsin



4 Data and refinement statistics

Property	Value	Source
Space group	P 63	Depositor
Cell constants a, b, c, α , β , γ	62.10Å 62.10Å 109.60Å 90.00° 90.00° 120.00°	Depositor
Resolution (Å)	20.55 – 2.10 20.54 – 2.10	Depositor EDS
% Data completeness (in resolution range)	100.0 (20.55-2.10) 100.0 (20.54-2.10)	Depositor EDS
R_{merge}	(Not available)	Depositor
R_{sym}	(Not available)	Depositor
$\langle I/\sigma(I) \rangle$ ¹	1.66 (at 2.09Å)	Xtrriage
Refinement program	PHENIX 1.9_1692	Depositor
R, R_{free}	0.192 , 0.244 0.194 , 0.244	Depositor DCC
R_{free} test set	700 reflections (5.01%)	wwPDB-VP
Wilson B-factor (Å ²)	32.5	Xtrriage
Anisotropy	0.348	Xtrriage
Bulk solvent k_{sol} (e/Å ³), B_{sol} (Å ²)	0.19 , 75.5	EDS
L-test for twinning ²	$\langle L \rangle = 0.39$, $\langle L^2 \rangle = 0.21$	Xtrriage
Estimated twinning fraction	0.160 for h,-h-k,-l	Xtrriage
F_o, F_c correlation	0.94	EDS
Total number of atoms	2312	wwPDB-VP
Average B, all atoms (Å ²)	37.0	wwPDB-VP

Xtrriage's analysis on translational NCS is as follows: *The largest off-origin peak in the Patterson function is 4.59% of the height of the origin peak. No significant pseudotranslation is detected.*

¹Intensities estimated from amplitudes.

²Theoretical values of $\langle |L| \rangle$, $\langle L^2 \rangle$ for acentric reflections are 0.5, 0.333 respectively for untwinned datasets, and 0.375, 0.2 for perfectly twinned datasets.

5 Model quality

5.1 Standard geometry

Bond lengths and bond angles in the following residue types are not validated in this section: DD9, D10, MYS, HP6, RET, TRD, L2P, UND, OCT, C14

The Z score for a bond length (or angle) is the number of standard deviations the observed value is removed from the expected value. A bond length (or angle) with $|Z| > 5$ is considered an outlier worth inspection. RMSZ is the root-mean-square of all Z scores of the bond lengths (or angles).

Mol	Chain	Bond lengths		Bond angles	
		RMSZ	# Z >5	RMSZ	# Z >5
1	A	0.39	0/2081	0.52	0/2845

There are no bond length outliers.

There are no bond angle outliers.

There are no chirality outliers.

There are no planarity outliers.

5.2 Too-close contacts

In the following table, the Non-H and H(model) columns list the number of non-hydrogen atoms and hydrogen atoms in the chain respectively. The H(added) column lists the number of hydrogen atoms added and optimized by MolProbity. The Clashes column lists the number of clashes within the asymmetric unit, whereas Symm-Clashes lists symmetry related clashes.

Mol	Chain	Non-H	H(model)	H(added)	Clashes	Symm-Clashes
1	A	2025	0	2072	38	0
2	A	40	0	54	5	0
3	A	93	0	172	15	0
4	A	13	0	28	0	0
5	A	10	0	22	2	0
6	A	7	0	16	0	0
7	A	24	0	54	4	0
8	A	15	0	32	0	0
9	A	22	0	48	1	0
10	A	9	0	20	1	0
11	A	14	0	30	1	0
12	A	40	0	0	5	0
All	All	2312	0	2548	55	0

The all-atom clashscore is defined as the number of clashes found per 1000 atoms (including hydrogen atoms). The all-atom clashscore for this structure is 11.

All (55) close contacts within the same asymmetric unit are listed below, sorted by their clash magnitude.

Atom-1	Atom-2	Interatomic distance (Å)	Clash overlap (Å)
1:A:234:GLU:OE2	12:A:402:HOH:O	2.07	0.73
1:A:153:PHE:HE2	1:A:179[B]:VAL:HG21	1.54	0.72
1:A:158:SER:O	12:A:401:HOH:O	2.07	0.72
1:A:164:ARG:NE	1:A:166:GLU:OE2	2.18	0.70
1:A:149:LEU:HD22	1:A:179[B]:VAL:HG22	1.76	0.66
1:A:132:SER:OG	12:A:403:HOH:O	2.13	0.66
1:A:225:ARG:HH12	10:A:312:DD9:H1A	1.61	0.65
1:A:157:THR:OG1	1:A:175:ARG:NH1	2.25	0.63
2:A:301[A]:RET:H8	2:A:301[A]:RET:H171	1.83	0.60
1:A:174:LEU:O	1:A:178[B]:THR:OG1	2.18	0.57
1:A:85[A]:ASP:OD2	12:A:404[A]:HOH:O	2.18	0.56
3:A:311:L2P:H152	3:A:311:L2P:H592	1.88	0.56
1:A:153:PHE:CE2	1:A:179[B]:VAL:HG21	2.37	0.55
1:A:177[B]:VAL:HG22	7:A:306:OCT:H32	1.89	0.55
1:A:149:LEU:HD13	1:A:179[B]:VAL:HG13	1.88	0.54
1:A:141:SER:HB3	2:A:301[A]:RET:H41	1.91	0.53
1:A:86[A]:TRP:CD1	2:A:301[A]:RET:H14	2.44	0.52
1:A:176[A]:ASN:HD22	7:A:306:OCT:H72	1.75	0.50
1:A:82[A]:ARG:HH22	1:A:205:THR:HG23	1.75	0.50
1:A:180[B]:VAL:HG22	7:A:307:OCT:H21	1.93	0.50
1:A:172:LYS:NZ	7:A:306:OCT:H81	2.28	0.48
1:A:153:PHE:HE2	1:A:179[A]:VAL:HG21	1.78	0.48
1:A:153:PHE:CE2	1:A:179[A]:VAL:HG21	2.47	0.48
1:A:83[B]:TYR:HH	1:A:189:TRP:HE1	1.60	0.48
1:A:17:THR:HG22	5:A:304:D10:H61	1.94	0.48
1:A:78:ILE:HD12	1:A:194:GLU:HG3	1.97	0.46
2:A:301[A]:RET:H181	2:A:301[A]:RET:H7	1.52	0.46
1:A:156:PHE:HB3	1:A:171:PHE:CZ	2.51	0.46
3:A:311:L2P:H493	3:A:311:L2P:H511	1.55	0.46
1:A:18:ALA:HA	5:A:304:D10:H42	1.98	0.46
2:A:301[B]:RET:H7	2:A:301[B]:RET:H181	1.58	0.45
1:A:166:GLU:N	1:A:166:GLU:OE1	2.40	0.44
3:A:302:L2P:H53	3:A:302:L2P:H502	1.63	0.44
9:A:309:UND:H81	3:A:310:L2P:H141	2.00	0.44
3:A:310:L2P:H291	3:A:310:L2P:H262	1.64	0.44
1:A:175:ARG:O	1:A:178[B]:THR:HB	2.18	0.43
3:A:311:L2P:H302	3:A:311:L2P:H262	1.79	0.43

Continued on next page...

Continued from previous page...

Atom-1	Atom-2	Interatomic distance (Å)	Clash overlap (Å)
3:A:310:L2P:H193	3:A:310:L2P:H211	1.70	0.43
1:A:167:VAL:HG12	1:A:228:ALA:HB1	2.01	0.43
1:A:185:TYR:CZ	1:A:211[B]:LEU:HB3	2.54	0.43
1:A:147:TYR:OH	3:A:302:L2P:H421	2.19	0.43
3:A:311:L2P:H23	3:A:311:L2P:H201	1.75	0.42
3:A:302:L2P:H591	3:A:302:L2P:H561	1.61	0.42
3:A:311:L2P:H462	3:A:311:L2P:H443	1.85	0.42
3:A:311:L2P:H171	3:A:311:L2P:H543	2.02	0.42
1:A:18:ALA:O	1:A:22:LEU:HD23	2.20	0.41
1:A:181[B]:LEU:HD23	1:A:181[B]:LEU:HA	1.85	0.41
3:A:311:L2P:H561	3:A:311:L2P:H543	1.53	0.41
1:A:83[B]:TYR:O	1:A:87[B]:LEU:N	2.53	0.41
11:A:313:C14:H111	11:A:313:C14:H071	2.01	0.41
1:A:149:LEU:HD22	1:A:179[A]:VAL:HG22	2.03	0.40
1:A:41:LYS:NZ	12:A:408:HOH:O	2.51	0.40
1:A:36:ASP:HA	1:A:37:PRO:HD2	1.89	0.40
1:A:143:ALA:HB2	3:A:310:L2P:H28	2.03	0.40
3:A:311:L2P:H161	3:A:311:L2P:H192	1.73	0.40

There are no symmetry-related clashes.

5.3 Torsion angles [i](#)

5.3.1 Protein backbone [i](#)

In the following table, the Percentiles column shows the percent Ramachandran outliers of the chain as a percentile score with respect to all X-ray entries followed by that with respect to entries of similar resolution.

The Analysed column shows the number of residues for which the backbone conformation was analysed, and the total number of residues.

Mol	Chain	Analysed	Favoured	Allowed	Outliers	Percentiles
1	A	259/249 (104%)	257 (99%)	2 (1%)	0	100 100

There are no Ramachandran outliers to report.

5.3.2 Protein sidechains [i](#)

In the following table, the Percentiles column shows the percent sidechain outliers of the chain as a percentile score with respect to all X-ray entries followed by that with respect to entries of similar

resolution.

The Analysed column shows the number of residues for which the sidechain conformation was analysed, and the total number of residues.

Mol	Chain	Analysed	Rotameric	Outliers	Percentiles
1	A	211/195 (108%)	209 (99%)	2 (1%)	78 84

All (2) residues with a non-rotameric sidechain are listed below:

Mol	Chain	Res	Type
1	A	161	GLU
1	A	163	MET

Some sidechains can be flipped to improve hydrogen bonding and reduce clashes. There are no such sidechains identified.

5.3.3 RNA [i](#)

There are no RNA molecules in this entry.

5.4 Non-standard residues in protein, DNA, RNA chains [i](#)

There are no non-standard protein/DNA/RNA residues in this entry.

5.5 Carbohydrates [i](#)

There are no carbohydrates in this entry.

5.6 Ligand geometry [i](#)

16 ligands are modelled in this entry.

In the following table, the Counts columns list the number of bonds (or angles) for which Mogul statistics could be retrieved, the number of bonds (or angles) that are observed in the model and the number of bonds (or angles) that are defined in the Chemical Component Dictionary. The Link column lists molecule types, if any, to which the group is linked. The Z score for a bond length (or angle) is the number of standard deviations the observed value is removed from the expected value. A bond length (or angle) with $|Z| > 2$ is considered an outlier worth inspection. RMSZ is the root-mean-square of all Z scores of the bond lengths (or angles).

Mol	Type	Chain	Res	Link	Bond lengths			Bond angles		
					Counts	RMSZ	# Z > 2	Counts	RMSZ	# Z > 2
3	L2P	A	311	-	45,45,45	0.65	0	51,53,53	0.87	2 (3%)
9	UND	A	315	-	10,10,10	0.15	0	9,9,9	0.72	0
3	L2P	A	310	-	21,21,45	0.58	0	22,24,53	0.90	1 (4%)
9	UND	A	309	-	10,10,10	0.14	0	9,9,9	0.80	0
10	DD9	A	312	-	8,8,8	0.12	0	7,7,7	0.75	0
2	RET	A	301[A]	1	20,20,21	0.68	0	27,27,28	1.83	10 (37%)
7	OCT	A	314	-	7,7,7	0.16	0	6,6,6	0.53	0
4	TRD	A	303	-	12,12,12	0.12	0	11,11,11	0.84	0
7	OCT	A	306	-	7,7,7	0.16	0	6,6,6	0.70	0
8	MYS	A	308	-	14,14,14	0.09	0	13,13,13	0.88	0
7	OCT	A	307	-	7,7,7	0.17	0	6,6,6	0.72	0
11	C14	A	313	-	13,13,13	0.12	0	12,12,12	0.78	0
3	L2P	A	302	-	24,24,45	0.69	0	26,27,53	0.82	0
6	HP6	A	305	-	6,6,6	0.15	0	5,5,5	0.66	0
2	RET	A	301[B]	1	20,20,21	0.70	0	27,27,28	1.89	6 (22%)
5	D10	A	304	-	9,9,9	0.12	0	8,8,8	0.89	0

In the following table, the Chirals column lists the number of chiral outliers, the number of chiral centers analysed, the number of these observed in the model and the number defined in the Chemical Component Dictionary. Similar counts are reported in the Torsion and Rings columns. '-' means no outliers of that kind were identified.

Mol	Type	Chain	Res	Link	Chirals	Torsions	Rings
3	L2P	A	311	-	-	26/51/51/51	-
9	UND	A	315	-	-	2/8/8/8	-
3	L2P	A	310	-	-	14/22/22/51	-
9	UND	A	309	-	-	1/8/8/8	-
10	DD9	A	312	-	-	1/6/6/6	-
2	RET	A	301[A]	1	-	0/13/30/31	0/1/1/1
7	OCT	A	314	-	-	1/5/5/5	-
4	TRD	A	303	-	-	7/10/10/10	-
7	OCT	A	306	-	-	1/5/5/5	-
8	MYS	A	308	-	-	6/12/12/12	-
7	OCT	A	307	-	-	0/5/5/5	-
11	C14	A	313	-	-	3/11/11/11	-
3	L2P	A	302	-	-	23/25/25/51	-
6	HP6	A	305	-	-	1/4/4/4	-
2	RET	A	301[B]	1	-	0/13/30/31	0/1/1/1
5	D10	A	304	-	-	4/7/7/7	-

There are no bond length outliers.

All (19) bond angle outliers are listed below:

Mol	Chain	Res	Type	Atoms	Z	Observed($^{\circ}$)	Ideal($^{\circ}$)
2	A	301[B]	RET	C18-C5-C6	-5.01	118.90	124.53
2	A	301[A]	RET	C18-C5-C6	-4.64	119.32	124.53
2	A	301[B]	RET	C11-C10-C9	-3.81	121.87	127.31
2	A	301[B]	RET	C7-C8-C9	-3.68	120.67	126.23
2	A	301[A]	RET	C10-C11-C12	-3.19	113.27	123.22
2	A	301[A]	RET	C19-C9-C8	2.58	122.14	118.08
2	A	301[A]	RET	C1-C6-C7	2.50	122.85	115.78
2	A	301[B]	RET	C1-C6-C7	2.49	122.81	115.78
2	A	301[A]	RET	C20-C13-C12	2.45	121.94	118.08
2	A	301[A]	RET	C2-C1-C6	2.42	114.20	110.48
2	A	301[A]	RET	C7-C6-C5	-2.34	115.79	121.46
2	A	301[A]	RET	C8-C9-C10	-2.30	115.42	118.94
2	A	301[B]	RET	C7-C6-C5	-2.20	116.12	121.46
2	A	301[A]	RET	C18-C5-C4	2.19	117.83	113.62
2	A	301[A]	RET	C3-C4-C5	-2.18	110.18	114.08
3	A	311	L2P	C21-C20-C18	-2.09	109.16	115.92
3	A	310	L2P	C21-C20-C18	-2.03	109.37	115.92
2	A	301[B]	RET	C2-C3-C4	-2.01	106.89	111.38
3	A	311	L2P	C26-C25-C23	-2.00	109.45	115.92

There are no chirality outliers.

All (90) torsion outliers are listed below:

Mol	Chain	Res	Type	Atoms
3	A	311	L2P	C42-C41-O2-C2
3	A	311	L2P	C41-C42-C43-C44
3	A	302	L2P	C41-C42-C43-C44
3	A	302	L2P	C50-C51-C52-C53
3	A	311	L2P	C44-C43-C45-C46
3	A	311	L2P	C51-C52-C53-C54
3	A	302	L2P	C49-C48-C50-C51
3	A	302	L2P	C54-C53-C55-C56
3	A	302	L2P	C43-C45-C46-C47
3	A	302	L2P	O1-C1-C2-O2
3	A	311	L2P	C53-C55-C56-C57
3	A	310	L2P	C18-C20-C21-C22
3	A	310	L2P	C25-C26-C27-C28
3	A	302	L2P	C55-C56-C57-C58
3	A	302	L2P	C45-C46-C47-C48
3	A	310	L2P	O1-C11-C12-C13

Continued on next page...

Continued from previous page...

Mol	Chain	Res	Type	Atoms
4	A	303	TRD	C9-C10-C11-C12
4	A	303	TRD	C7-C8-C9-C10
5	A	304	D10	C6-C7-C8-C9
8	A	308	MYS	C4-C5-C6-C7
9	A	315	UND	C5-C6-C7-C8
9	A	309	UND	C7-C8-C9-C10
3	A	311	L2P	C56-C57-C58-C59
3	A	310	L2P	C14-C13-C15-C16
3	A	310	L2P	C15-C16-C17-C18
3	A	302	L2P	C2-C1-O1-C11
11	A	313	C14	C02-C03-C04-C05
11	A	313	C14	C08-C09-C10-C11
3	A	302	L2P	C52-C53-C55-C56
3	A	310	L2P	C13-C15-C16-C17
3	A	311	L2P	C48-C50-C51-C52
3	A	311	L2P	O1-C1-C2-O2
3	A	311	L2P	C20-C21-C22-C23
3	A	310	L2P	C16-C17-C18-C19
8	A	308	MYS	C3-C4-C5-C6
6	A	305	HP6	C21-C22-C23-C24
3	A	302	L2P	C48-C50-C51-C52
3	A	311	L2P	C25-C26-C27-C28
3	A	302	L2P	C56-C57-C58-C60
3	A	310	L2P	C16-C17-C18-C20
3	A	311	L2P	C46-C47-C48-C50
3	A	311	L2P	C51-C52-C53-C55
3	A	302	L2P	C46-C47-C48-C50
3	A	302	L2P	C44-C43-C45-C46
3	A	302	L2P	C46-C47-C48-C49
3	A	302	L2P	C51-C52-C53-C54
3	A	311	L2P	C2-C1-O1-C11
4	A	303	TRD	C1-C2-C3-C4
3	A	311	L2P	O1-C1-C2-C3
3	A	311	L2P	C56-C57-C58-C60
3	A	302	L2P	C56-C57-C58-C59
3	A	310	L2P	C24-C23-C25-C26
5	A	304	D10	C2-C3-C4-C5
3	A	311	L2P	C23-C25-C26-C27
10	A	312	DD9	C1-C2-C3-C4
3	A	302	L2P	O2-C41-C42-C43
3	A	311	L2P	C26-C27-C28-C30
3	A	302	L2P	C53-C55-C56-C57

Continued on next page...

Continued from previous page...

Mol	Chain	Res	Type	Atoms
3	A	310	L2P	C22-C23-C25-C26
3	A	311	L2P	C42-C43-C45-C46
3	A	302	L2P	C47-C48-C50-C51
3	A	302	L2P	C51-C52-C53-C55
3	A	311	L2P	C43-C45-C46-C47
3	A	302	L2P	C41-C42-C43-C45
5	A	304	D10	C5-C6-C7-C8
8	A	308	MYS	C9-C10-C11-C12
3	A	310	L2P	C26-C27-C28-C29
4	A	303	TRD	C4-C5-C6-C7
3	A	311	L2P	C26-C27-C28-C29
4	A	303	TRD	C3-C4-C5-C6
3	A	311	L2P	C12-C11-O1-C1
3	A	311	L2P	C45-C46-C47-C48
3	A	311	L2P	C46-C47-C48-C49
3	A	311	L2P	C54-C53-C55-C56
9	A	315	UND	C4-C5-C6-C7
3	A	311	L2P	C41-C42-C43-C45
7	A	314	OCT	C5-C6-C7-C8
8	A	308	MYS	C5-C6-C7-C8
7	A	306	OCT	C3-C4-C5-C6
8	A	308	MYS	C12-C13-C14-C15
4	A	303	TRD	C11-C10-C9-C8
3	A	310	L2P	C26-C27-C28-C30
3	A	311	L2P	C49-C48-C50-C51
5	A	304	D10	C4-C5-C6-C7
4	A	303	TRD	C5-C6-C7-C8
3	A	302	L2P	C42-C41-O2-C2
8	A	308	MYS	C1-C2-C3-C4
3	A	310	L2P	C23-C25-C26-C27
3	A	310	L2P	C12-C13-C15-C16
11	A	313	C14	C07-C08-C09-C10

There are no ring outliers.

11 monomers are involved in 28 short contacts:

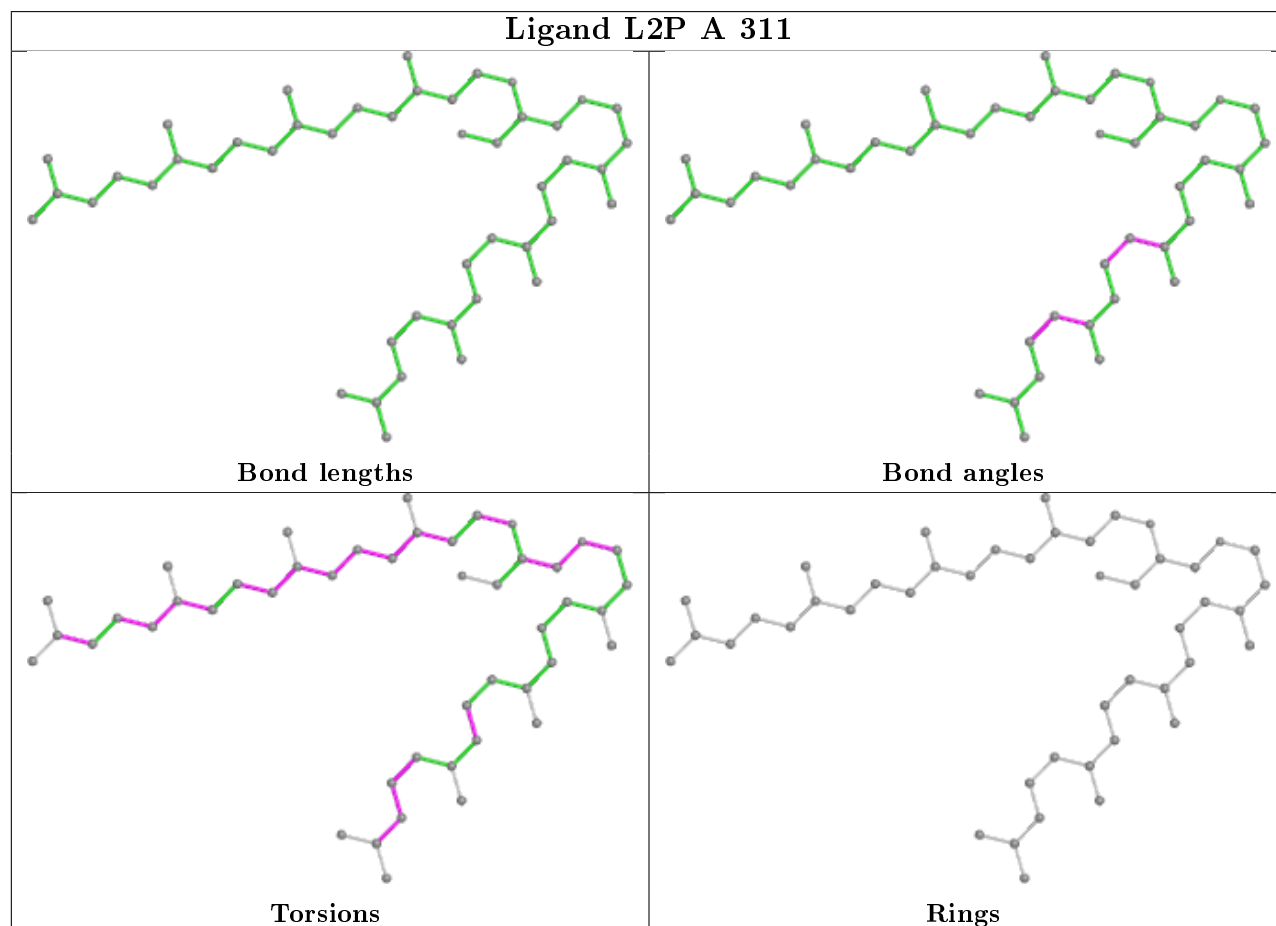
Mol	Chain	Res	Type	Clashes	Symm-Clashes
3	A	311	L2P	8	0
3	A	310	L2P	4	0
9	A	309	UND	1	0
10	A	312	DD9	1	0
2	A	301[A]	RET	4	0

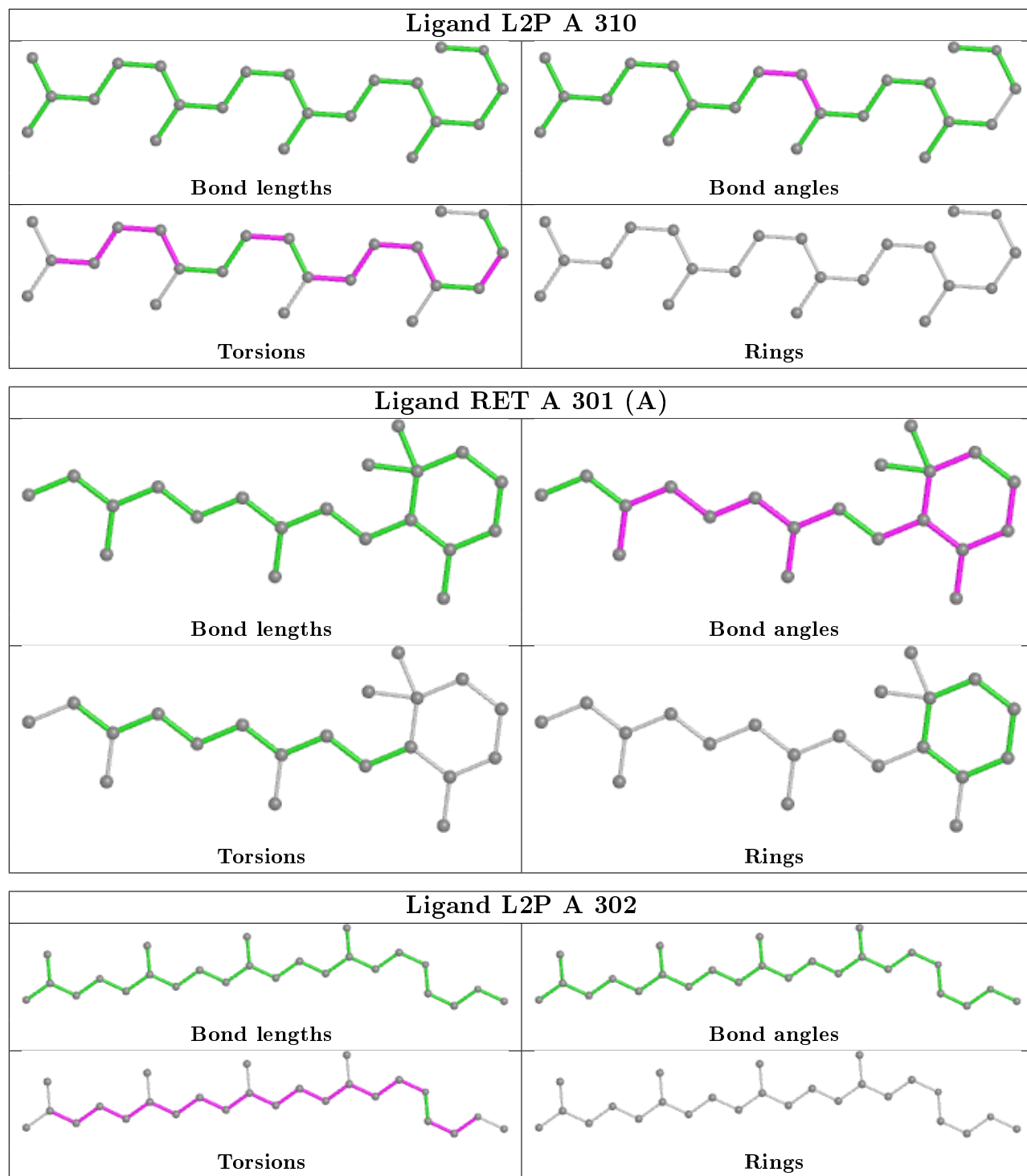
Continued on next page...

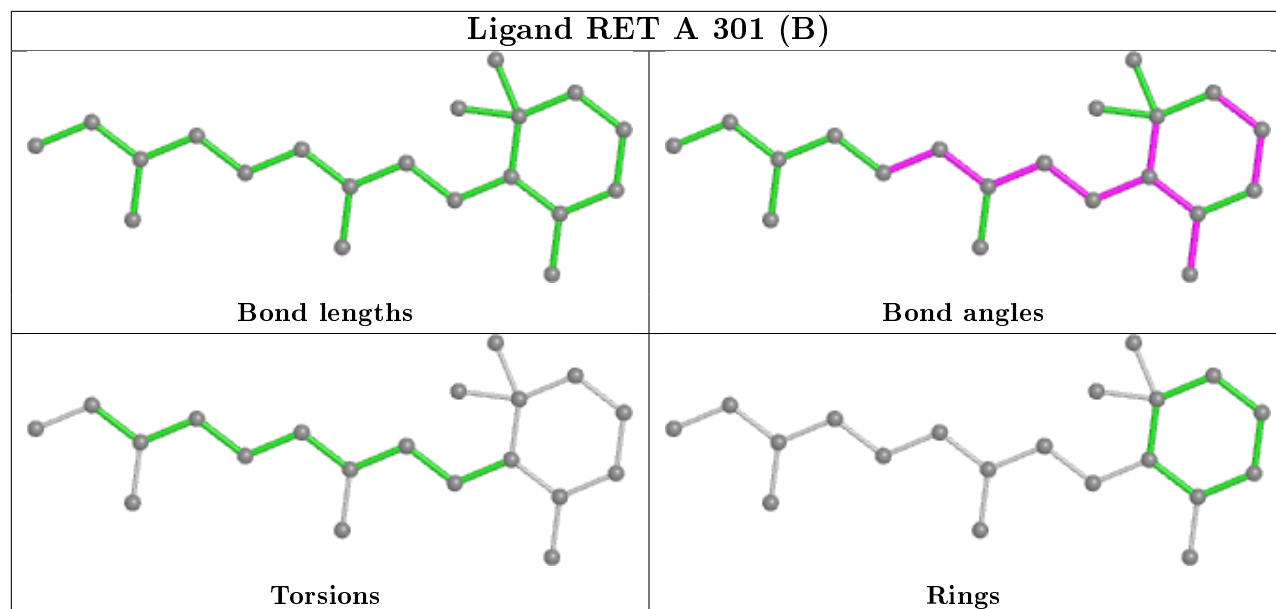
Continued from previous page...

Mol	Chain	Res	Type	Clashes	Symm-Clashes
7	A	306	OCT	3	0
7	A	307	OCT	1	0
11	A	313	C14	1	0
3	A	302	L2P	3	0
2	A	301[B]	RET	1	0
5	A	304	D10	2	0

The following is a two-dimensional graphical depiction of Mogul quality analysis of bond lengths, bond angles, torsion angles, and ring geometry for all instances of the Ligand of Interest. In addition, ligands with molecular weight > 250 and outliers as shown on the validation Tables will also be included. For torsion angles, if less than 5% of the Mogul distribution of torsion angles is within 10 degrees of the torsion angle in question, then that torsion angle is considered an outlier. Any bond that is central to one or more torsion angles identified as an outlier by Mogul will be highlighted in the graph. For rings, the root-mean-square deviation (RMSD) between the ring in question and similar rings identified by Mogul is calculated over all ring torsion angles. If the average RMSD is greater than 60 degrees and the minimal RMSD between the ring in question and any Mogul-identified rings is also greater than 60 degrees, then that ring is considered an outlier. The outliers are highlighted in purple. The color gray indicates Mogul did not find sufficient equivalents in the CSD to analyse the geometry.







5.7 Other polymers [i](#)

There are no such residues in this entry.

5.8 Polymer linkage issues [i](#)

There are no chain breaks in this entry.

6 Fit of model and data [i](#)

6.1 Protein, DNA and RNA chains [i](#)

In the following table, the column labelled '#RSRZ> 2' contains the number (and percentage) of RSRZ outliers, followed by percent RSRZ outliers for the chain as percentile scores relative to all X-ray entries and entries of similar resolution. The OWAB column contains the minimum, median, 95th percentile and maximum values of the occupancy-weighted average B-factor per residue. The column labelled 'Q< 0.9' lists the number of (and percentage) of residues with an average occupancy less than 0.9.

Mol	Chain	Analysed	<RSRZ>	#RSRZ>2	OWAB(Å ²)	Q<0.9
1	A	231/249 (92%)	-0.47	4 (1%) 70 74	21, 32, 64, 86	0

All (4) RSRZ outliers are listed below:

Mol	Chain	Res	Type	RSRZ
1	A	157	THR	3.5
1	A	155	GLY	3.1
1	A	33	GLY	2.2
1	A	231	GLY	2.0

6.2 Non-standard residues in protein, DNA, RNA chains [i](#)

There are no non-standard protein/DNA/RNA residues in this entry.

6.3 Carbohydrates [i](#)

There are no carbohydrates in this entry.

6.4 Ligands [i](#)

In the following table, the Atoms column lists the number of modelled atoms in the group and the number defined in the chemical component dictionary. The B-factors column lists the minimum, median, 95th percentile and maximum values of B factors of atoms in the group. The column labelled 'Q< 0.9' lists the number of atoms with occupancy less than 0.9.

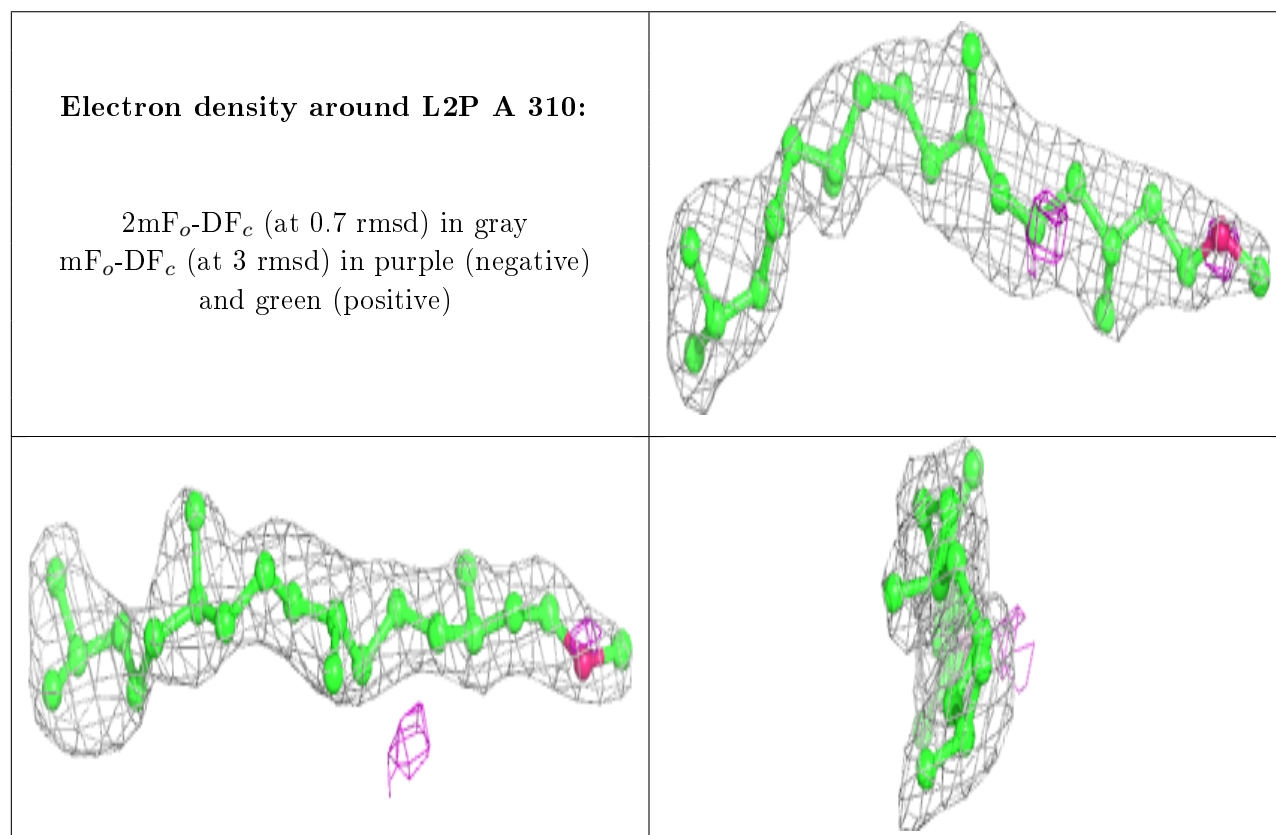
Mol	Type	Chain	Res	Atoms	RSCC	RSR	B-factors(Å ²)	Q<0.9
7	OCT	A	306	8/8	0.79	0.26	48,53,59,61	0
7	OCT	A	314	8/8	0.80	0.16	50,63,66,66	0
9	UND	A	315	11/11	0.82	0.16	49,64,71,71	0

Continued on next page...

Continued from previous page...

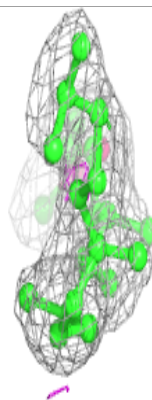
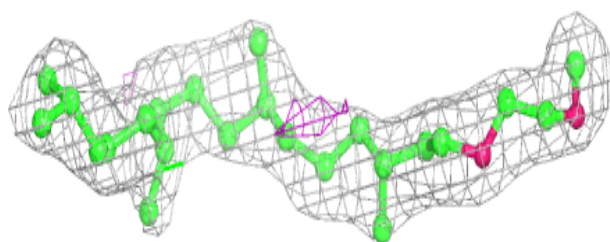
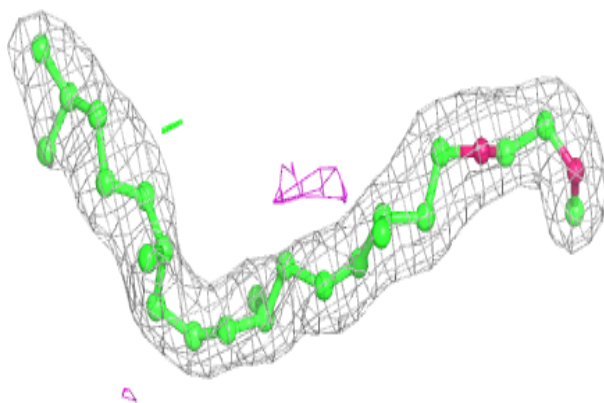
Mol	Type	Chain	Res	Atoms	RSCC	RSR	B-factors(Å ²)	Q<0.9
10	DD9	A	312	9/9	0.82	0.16	44,55,59,68	0
7	OCT	A	307	8/8	0.84	0.24	42,49,51,56	0
11	C14	A	313	14/14	0.86	0.21	44,51,61,63	0
3	L2P	A	310	22/46	0.88	0.18	43,51,59,61	0
8	MYS	A	308	15/15	0.88	0.12	48,53,62,66	0
4	TRD	A	303	13/13	0.89	0.11	45,54,61,62	0
5	D10	A	304	10/10	0.91	0.09	42,48,58,61	0
3	L2P	A	302	25/46	0.92	0.12	35,44,54,56	0
9	UND	A	309	11/11	0.92	0.16	39,45,51,52	0
3	L2P	A	311	46/46	0.93	0.16	39,53,64,66	0
6	HP6	A	305	7/7	0.95	0.09	36,45,51,53	0
2	RET	A	301[B]	20/21	0.95	0.13	22,23,26,28	20
2	RET	A	301[A]	20/21	0.95	0.13	20,24,27,28	20

The following is a graphical depiction of the model fit to experimental electron density of all instances of the Ligand of Interest. In addition, ligands with molecular weight > 250 and outliers as shown on the geometry validation Tables will also be included. Each fit is shown from different orientation to approximate a three-dimensional view.

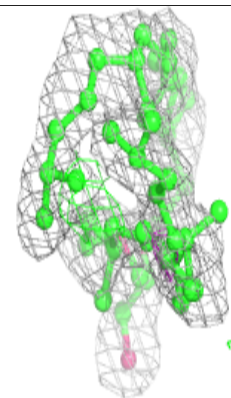
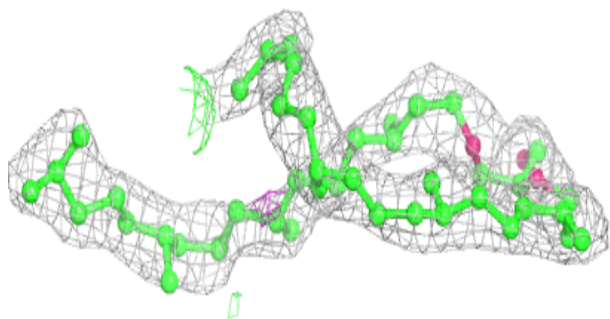
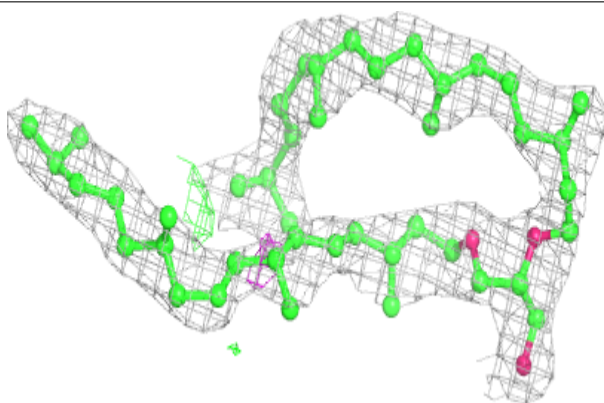


Electron density around L2P A 302:

$2mF_o-DF_c$ (at 0.7 rmsd) in gray
 mF_o-DF_c (at 3 rmsd) in purple (negative)
and green (positive)

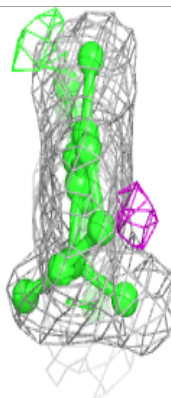
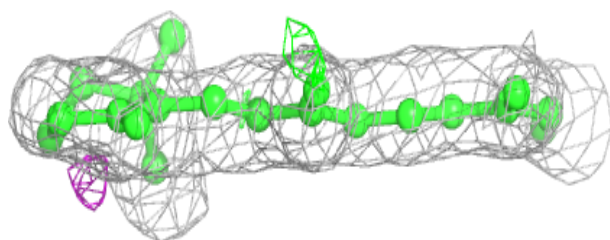
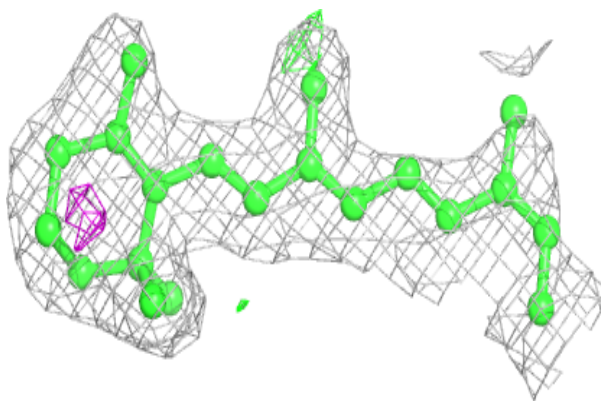
**Electron density around L2P A 311:**

$2mF_o-DF_c$ (at 0.7 rmsd) in gray
 mF_o-DF_c (at 3 rmsd) in purple (negative)
and green (positive)

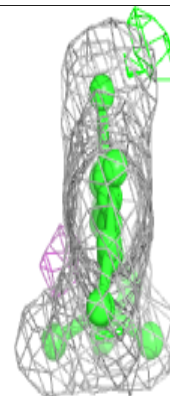
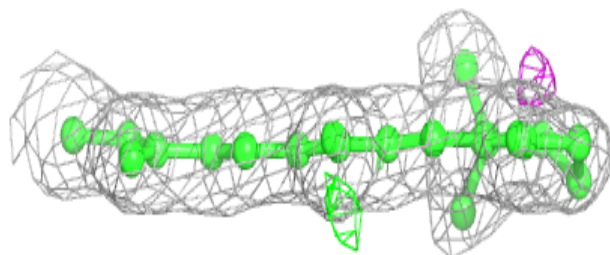
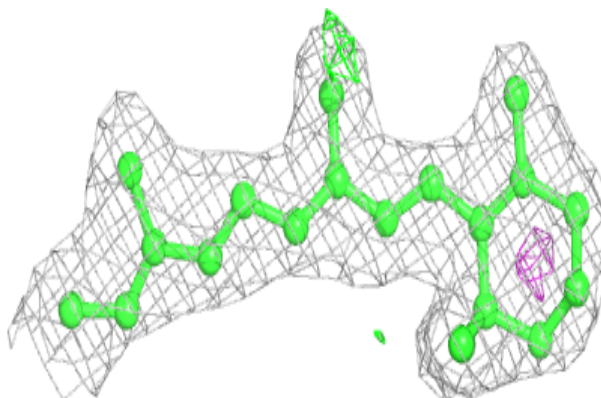


Electron density around RET A 301 (B):

$2mF_o-DF_c$ (at 0.7 rmsd) in gray
 mF_o-DF_c (at 3 rmsd) in purple (negative)
and green (positive)

**Electron density around RET A 301 (A):**

$2mF_o-DF_c$ (at 0.7 rmsd) in gray
 mF_o-DF_c (at 3 rmsd) in purple (negative)
and green (positive)



6.5 Other polymers

There are no such residues in this entry.