



Full wwPDB X-ray Structure Validation Report ⓘ

Aug 20, 2023 – 04:32 AM EDT

PDB ID : 2G67
Title : E. Coli Pyruvate Dehydrogenase E1 Component (Apoenzyme)
Authors : Furey, W.; Chandrasekhar, K.; Arjunan, P.
Deposited on : 2006-02-24
Resolution : 2.32 Å(reported)

This is a Full wwPDB X-ray Structure Validation Report for a publicly released PDB entry.

We welcome your comments at validation@mail.wwpdb.org

A user guide is available at

<https://www.wwpdb.org/validation/2017/XrayValidationReportHelp>

with specific help available everywhere you see the ⓘ symbol.

The types of validation reports are described at

<http://www.wwpdb.org/validation/2017/FAQs#types>.

The following versions of software and data (see [references ⓘ](#)) were used in the production of this report:

MolProbity : 4.02b-467
Xtriage (Phenix) : 1.13
EDS : 2.35
Percentile statistics : 20191225.v01 (using entries in the PDB archive December 25th 2019)
Refmac : 5.8.0158
CCP4 : 7.0.044 (Gargrove)
Ideal geometry (proteins) : Engh & Huber (2001)
Ideal geometry (DNA, RNA) : Parkinson et al. (1996)
Validation Pipeline (wwPDB-VP) : 2.35

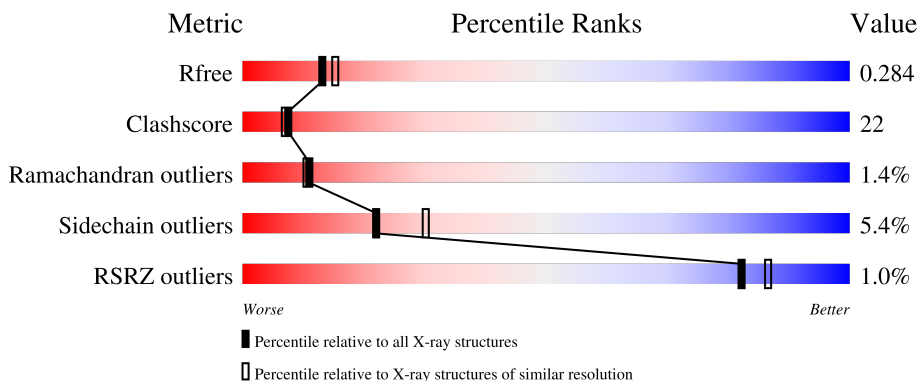
1 Overall quality at a glance

The following experimental techniques were used to determine the structure:

X-RAY DIFFRACTION

The reported resolution of this entry is 2.32 Å.

Percentile scores (ranging between 0-100) for global validation metrics of the entry are shown in the following graphic. The table shows the number of entries on which the scores are based.



Metric	Whole archive (#Entries)	Similar resolution (#Entries, resolution range(Å))
R_{free}	130704	5974 (2.34-2.30)
Clashscore	141614	6604 (2.34-2.30)
Ramachandran outliers	138981	6523 (2.34-2.30)
Sidechain outliers	138945	6523 (2.34-2.30)
RSRZ outliers	127900	5855 (2.34-2.30)

The table below summarises the geometric issues observed across the polymeric chains and their fit to the electron density. The red, orange, yellow and green segments of the lower bar indicate the fraction of residues that contain outliers for ≥ 3 , 2, 1 and 0 types of geometric quality criteria respectively. A grey segment represents the fraction of residues that are not modelled. The numeric value for each fraction is indicated below the corresponding segment, with a dot representing fractions $\leq 5\%$. The upper red bar (where present) indicates the fraction of residues that have poor fit to the electron density. The numeric value is given above the bar.

Mol	Chain	Length	Quality of chain
1	A	886	
1	B	886	

2 Entry composition

There are 2 unique types of molecules in this entry. The entry contains 13150 atoms, of which 0 are hydrogens and 0 are deuteriums.

In the tables below, the ZeroOcc column contains the number of atoms modelled with zero occupancy, the AltConf column contains the number of residues with at least one atom in alternate conformation and the Trace column contains the number of residues modelled with at most 2 atoms.

- Molecule 1 is a protein called Pyruvate dehydrogenase E1 component.

Mol	Chain	Residues	Atoms					ZeroOcc	AltConf	Trace
			Total	C	N	O	S			
1	A	801	6351	4024	1096	1205	26	0	1	0
1	B	801	6351	4024	1096	1205	26	0	1	0

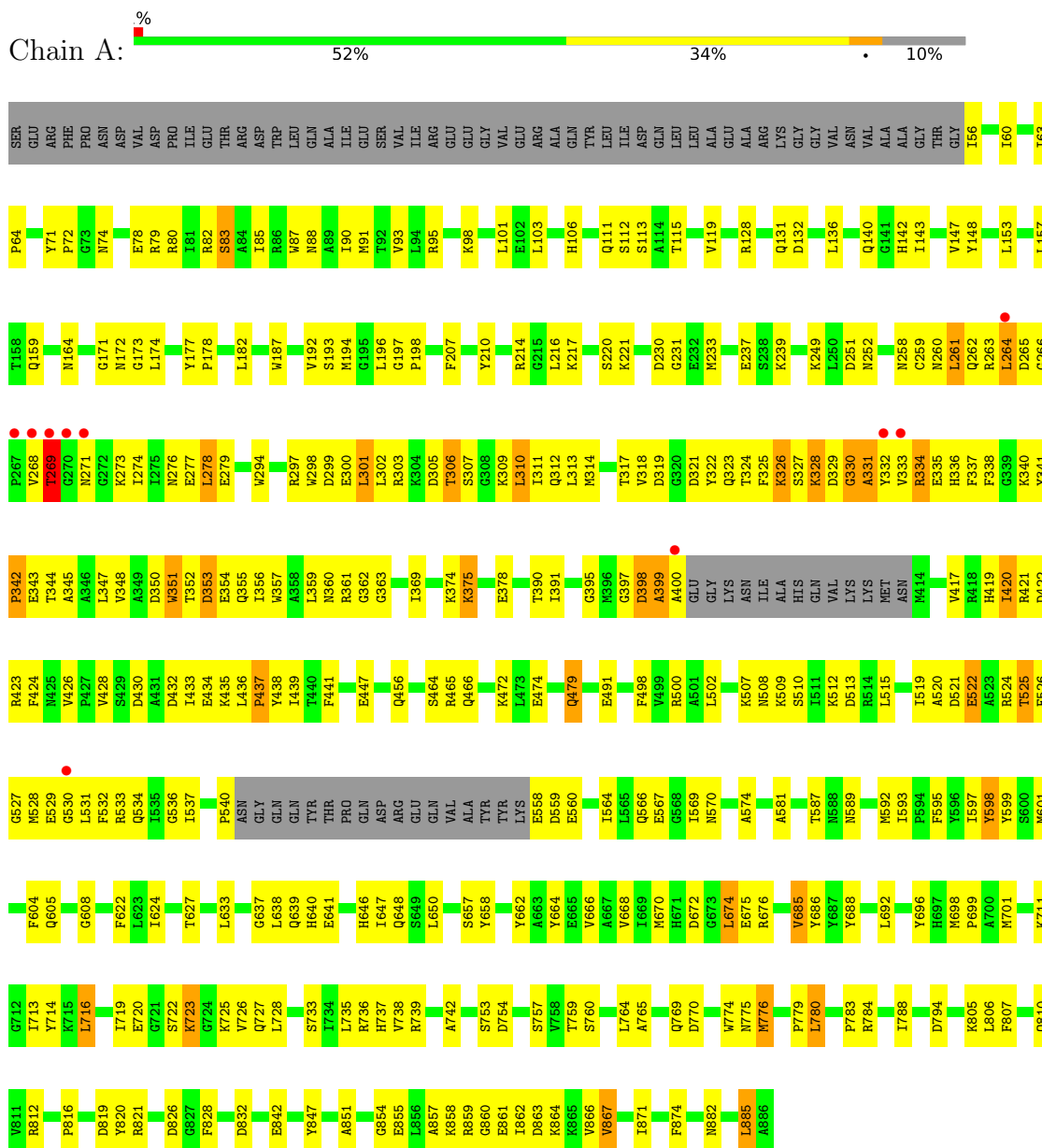
- Molecule 2 is water.

Mol	Chain	Residues	Atoms		ZeroOcc	AltConf
2	A	241	Total 241	O 241	0	0
2	B	207	Total 207	O 207	0	0

3 Residue-property plots i

These plots are drawn for all protein, RNA, DNA and oligosaccharide chains in the entry. The first graphic for a chain summarises the proportions of the various outlier classes displayed in the second graphic. The second graphic shows the sequence view annotated by issues in geometry and electron density. Residues are color-coded according to the number of geometric quality criteria for which they contain at least one outlier: green = 0, yellow = 1, orange = 2 and red = 3 or more. A red dot above a residue indicates a poor fit to the electron density ($RSRZ > 2$). Stretches of 2 or more consecutive residues without any outlier are shown as a green connector. Residues present in the sample, but not in the model, are shown in grey.

- Molecule 1: Pyruvate dehydrogenase E1 component



- Molecule 1: Pyruvate dehydrogenase E1 component

4 Data and refinement statistics

Property	Value	Source
Space group	P 1 21 1	Depositor
Cell constants a, b, c, α , β , γ	81.61Å 140.63Å 81.91Å 90.00° 102.87° 90.00°	Depositor
Resolution (Å)	34.62 – 2.32 34.72 – 2.31	Depositor EDS
% Data completeness (in resolution range)	91.7 (34.62-2.32) 90.3 (34.72-2.31)	Depositor EDS
R_{merge}	0.06	Depositor
R_{sym}	(Not available)	Depositor
$\langle I/\sigma(I) \rangle$ ¹	7.39 (at 2.31Å)	Xtrriage
Refinement program	CNS 1.1	Depositor
R, R_{free}	0.212 , 0.281 0.213 , 0.284	Depositor DCC
R_{free} test set	3618 reflections (5.07%)	wwPDB-VP
Wilson B-factor (Å ²)	14.2	Xtrriage
Anisotropy	0.170	Xtrriage
Bulk solvent k_{sol} (e/Å ³), B_{sol} (Å ²)	0.34 , 21.1	EDS
L-test for twinning ²	$\langle L \rangle = 0.42$, $\langle L^2 \rangle = 0.25$	Xtrriage
Estimated twinning fraction	0.057 for l,-k,h	Xtrriage
F_o, F_c correlation	0.89	EDS
Total number of atoms	13150	wwPDB-VP
Average B, all atoms (Å ²)	15.0	wwPDB-VP

Xtrriage's analysis on translational NCS is as follows: *The largest off-origin peak in the Patterson function is 10.14% of the height of the origin peak. No significant pseudotranslation is detected.*

¹Intensities estimated from amplitudes.

²Theoretical values of $\langle |L| \rangle$, $\langle L^2 \rangle$ for acentric reflections are 0.5, 0.333 respectively for untwinned datasets, and 0.375, 0.2 for perfectly twinned datasets.

5 Model quality

5.1 Standard geometry

The Z score for a bond length (or angle) is the number of standard deviations the observed value is removed from the expected value. A bond length (or angle) with $|Z| > 5$ is considered an outlier worth inspection. RMSZ is the root-mean-square of all Z scores of the bond lengths (or angles).

Mol	Chain	Bond lengths		Bond angles	
		RMSZ	# Z >5	RMSZ	# Z >5
1	A	0.52	0/6495	0.72	1/8781 (0.0%)
1	B	0.50	0/6495	0.72	2/8781 (0.0%)
All	All	0.51	0/12990	0.72	3/17562 (0.0%)

Chiral center outliers are detected by calculating the chiral volume of a chiral center and verifying if the center is modelled as a planar moiety or with the opposite hand. A planarity outlier is detected by checking planarity of atoms in a peptide group, atoms in a mainchain group or atoms of a sidechain that are expected to be planar.

Mol	Chain	#Chirality outliers	#Planarity outliers
1	A	0	1
1	B	0	3
All	All	0	4

There are no bond length outliers.

All (3) bond angle outliers are listed below:

Mol	Chain	Res	Type	Atoms	Z	Observed($^{\circ}$)	Ideal($^{\circ}$)
1	B	171	GLY	N-CA-C	5.40	126.60	113.10
1	A	171	GLY	N-CA-C	5.37	126.52	113.10
1	B	637	GLY	N-CA-C	5.16	126.00	113.10

There are no chirality outliers.

All (4) planarity outliers are listed below:

Mol	Chain	Res	Type	Group
1	A	598	TYR	Sidechain
1	B	598	TYR	Sidechain
1	B	678	TYR	Sidechain
1	B	803	TYR	Sidechain

5.2 Too-close contacts

In the following table, the Non-H and H(model) columns list the number of non-hydrogen atoms and hydrogen atoms in the chain respectively. The H(added) column lists the number of hydrogen atoms added and optimized by MolProbity. The Clashes column lists the number of clashes within the asymmetric unit, whereas Symm-Clashes lists symmetry-related clashes.

Mol	Chain	Non-H	H(model)	H(added)	Clashes	Symm-Clashes
1	A	6351	0	6185	315	0
1	B	6351	0	6185	259	0
2	A	241	0	0	22	0
2	B	207	0	0	10	0
All	All	13150	0	12370	553	0

The all-atom clashscore is defined as the number of clashes found per 1000 atoms (including hydrogen atoms). The all-atom clashscore for this structure is 22.

All (553) close contacts within the same asymmetric unit are listed below, sorted by their clash magnitude.

Atom-1	Atom-2	Interatomic distance (Å)	Clash overlap (Å)
1:B:502:LEU:HD21	1:B:531:LEU:HD11	1.19	1.14
1:B:490:LYS:HE2	1:B:500:ARG:HH22	1.15	1.07
1:B:638:LEU:HD21	1:B:828:PHE:HB3	1.41	1.02
1:A:177:TYR:CG	1:A:192:VAL:HG11	1.96	0.99
1:A:855:GLU:O	1:A:859:ARG:HG3	1.65	0.97
1:B:268:VAL:HB	1:B:274:ILE:HD13	1.45	0.95
1:A:821:ARG:NH1	1:A:851:ALA:HA	1.82	0.94
1:A:326:LYS:HD3	1:A:391:ILE:HG23	1.50	0.92
1:B:490:LYS:CE	1:B:500:ARG:HH22	1.83	0.92
1:A:519:ILE:HD11	1:A:528:MET:HG3	1.51	0.91
1:B:198:PRO:HG3	1:B:228:LEU:HD22	1.53	0.91
1:B:346:ALA:HA	1:B:349:ALA:HB2	1.51	0.91
1:B:309:LYS:HG3	1:B:343:GLU:HG3	1.53	0.91
1:A:98:LYS:HZ3	1:A:436:LEU:HD12	1.35	0.90
1:B:502:LEU:HD21	1:B:531:LEU:CD1	2.02	0.88
1:B:421:ARG:HG3	1:B:421:ARG:HH11	1.40	0.86
1:B:502:LEU:CD2	1:B:531:LEU:HD11	2.03	0.86
1:B:638:LEU:CD2	1:B:828:PHE:HB3	2.06	0.85
1:B:533:ARG:HH11	1:B:533:ARG:HB2	1.42	0.85
1:B:282:PHE:CD2	1:B:385:VAL:HG21	2.12	0.84
1:A:862:ILE:HD12	1:A:866:VAL:HG21	1.60	0.84
1:A:98:LYS:NZ	1:A:436:LEU:HD12	1.92	0.84
1:B:421:ARG:HB2	1:B:426:VAL:HB	1.58	0.84

Continued on next page...

Continued from previous page...

Atom-1	Atom-2	Interatomic distance (Å)	Clash overlap (Å)
1:B:279:GLU:HG3	1:B:289:VAL:HG21	1.57	0.83
1:A:722:SER:O	1:A:723:LYS:HB2	1.77	0.83
1:A:140:GLN:O	1:A:143:ILE:HG13	1.80	0.81
1:B:74:ASN:O	1:B:78:GLU:HG3	1.79	0.81
1:A:882:ASN:HB3	1:A:885:LEU:HD22	1.64	0.80
1:B:471:GLU:HG2	2:B:932:HOH:O	1.80	0.80
1:A:666:VAL:O	1:A:670:MET:HG3	1.82	0.80
1:B:519:ILE:HD13	1:B:523:ALA:HB2	1.64	0.79
1:A:331:ALA:HA	1:A:334:ARG:HG2	1.62	0.78
1:B:490:LYS:HE2	1:B:500:ARG:NH2	1.95	0.78
1:B:261:LEU:O	1:B:267:PRO:HA	1.84	0.78
1:A:821:ARG:HH11	1:A:851:ALA:HA	1.47	0.78
1:B:509:LYS:H	1:B:509:LYS:HD2	1.47	0.78
1:A:638:LEU:HD21	1:A:828:PHE:CD1	2.19	0.77
1:A:268:VAL:O	1:A:269:THR:HG23	1.85	0.76
1:A:426:VAL:HG13	1:A:439:ILE:HD11	1.65	0.76
1:A:512:LYS:HG3	1:A:513:ASP:N	2.01	0.76
1:B:354:GLU:CD	1:B:354:GLU:H	1.88	0.75
1:A:522:GLU:HG3	1:A:599:TYR:HE1	1.51	0.74
1:A:532:PHE:CD2	1:A:537:ILE:HD11	2.22	0.74
1:A:90:ILE:HD12	1:A:420:ILE:HD12	1.69	0.73
1:B:352:THR:HB	1:B:354:GLU:OE1	1.87	0.73
1:B:502:LEU:HD23	1:B:503:ASN:N	2.04	0.73
1:A:842:GLU:HG2	1:A:847:TYR:CE2	2.23	0.73
1:A:426:VAL:HG12	1:A:428:VAL:HG23	1.72	0.72
1:B:844:ASP:OD1	1:B:846:SER:HB3	1.90	0.72
1:B:309:LYS:CG	1:B:343:GLU:HG3	2.19	0.72
1:A:352:THR:H	1:A:355:GLN:HB2	1.53	0.72
1:B:274:ILE:O	1:B:278:LEU:HD23	1.90	0.72
1:B:417:VAL:O	1:B:420:ILE:HG12	1.90	0.72
1:A:277:GLU:OE2	1:B:243:THR:HG21	1.88	0.71
1:A:527:GLY:HA2	1:A:529:GLU:OE1	1.91	0.70
1:A:214:ARG:CB	1:A:216:LEU:HD13	2.21	0.70
1:A:716:LEU:HD13	1:A:739:ARG:CZ	2.21	0.70
1:B:98:LYS:HE3	1:B:436:LEU:HD11	1.71	0.70
1:B:421:ARG:HG3	1:B:421:ARG:NH1	2.07	0.70
1:B:533:ARG:HB2	1:B:533:ARG:NH1	2.07	0.70
1:A:269:THR:HG21	2:A:954:HOH:O	1.91	0.70
1:A:301:LEU:CD1	1:A:347:LEU:HD13	2.21	0.70
1:A:83:SER:OG	1:A:424:PHE:HB3	1.92	0.69
1:A:56:ILE:HG23	1:A:279:GLU:OE1	1.92	0.69

Continued on next page...

Continued from previous page...

Atom-1	Atom-2	Interatomic distance (Å)	Clash overlap (Å)
1:A:301:LEU:HD12	1:A:310:LEU:HD12	1.74	0.69
1:A:519:ILE:CD1	1:A:528:MET:HG3	2.23	0.69
1:B:421:ARG:HD2	1:B:421:ARG:O	1.93	0.69
1:A:417:VAL:HG12	1:A:433:ILE:HD11	1.74	0.69
1:B:502:LEU:HD23	1:B:502:LEU:C	2.13	0.69
1:B:287:TRP:CE3	1:B:385:VAL:HG23	2.29	0.68
1:B:859:ARG:HH11	1:B:859:ARG:HB2	1.58	0.68
1:A:512:LYS:HG3	1:A:513:ASP:H	1.56	0.68
1:A:832:ASP:OD2	1:B:169:VAL:HB	1.94	0.68
1:A:340:LYS:HB2	1:A:340:LYS:NZ	2.09	0.68
1:A:348:VAL:HB	1:A:356:ILE:HD11	1.74	0.68
1:B:361:ARG:HD3	1:B:389:HIS:CD2	2.29	0.68
1:B:522:GLU:HG2	1:B:599:TYR:OH	1.94	0.68
1:B:638:LEU:HD21	1:B:828:PHE:CB	2.21	0.68
1:B:844:ASP:HB2	2:B:1069:HOH:O	1.94	0.68
1:B:859:ARG:HB2	1:B:859:ARG:NH1	2.09	0.67
1:A:338:PHE:O	1:A:345:ALA:HB2	1.95	0.67
1:A:249:LYS:HE3	2:A:1100:HOH:O	1.93	0.67
1:B:558:GLU:O	1:B:558:GLU:HG2	1.95	0.67
1:B:529:GLU:N	1:B:529:GLU:OE1	2.28	0.67
1:A:74:ASN:O	1:A:78:GLU:HG3	1.94	0.67
1:A:309:LYS:HB3	1:A:344:THR:HG23	1.77	0.67
1:B:434:GLU:CD	1:B:434:GLU:H	1.98	0.66
1:B:130:GLU:CD	1:B:131:GLN:HE22	2.00	0.66
1:B:512:LYS:HG3	1:B:513:ASP:N	2.10	0.66
1:A:325:PHE:O	1:A:327:SER:N	2.30	0.65
1:A:432:ASP:HA	1:A:435:LYS:HD3	1.78	0.65
1:A:536:GLY:O	1:A:564:ILE:HD12	1.96	0.65
1:B:273:LYS:HD2	2:B:992:HOH:O	1.97	0.64
1:A:433:ILE:HG23	1:A:434:GLU:HG3	1.79	0.64
1:B:509:LYS:HD2	1:B:509:LYS:N	2.13	0.64
1:B:85:ILE:HG12	1:B:153:LEU:HD22	1.80	0.64
1:B:207:PHE:O	1:B:210:TYR:HB3	1.98	0.64
1:A:456:GLN:HA	1:A:456:GLN:NE2	2.11	0.64
1:A:567:GLU:HG3	1:A:574:ALA:HA	1.78	0.64
1:A:214:ARG:HB2	1:A:216:LEU:HD13	1.80	0.63
1:A:297:ARG:HD2	1:A:359:LEU:HA	1.79	0.63
1:A:318:VAL:HG12	1:A:321:ASP:OD2	1.99	0.63
1:A:805:LYS:HG3	1:A:826:ASP:OD1	1.99	0.63
1:B:854:GLY:O	1:B:858:LYS:HG3	1.98	0.63
1:A:207:PHE:CZ	1:A:581:ALA:HA	2.34	0.62

Continued on next page...

Continued from previous page...

Atom-1	Atom-2	Interatomic distance (Å)	Clash overlap (Å)
1:B:566:GLN:HG2	2:B:1068:HOH:O	1.98	0.62
1:A:132:ASP:HA	1:A:217:LYS:HE3	1.82	0.62
1:A:466:GLN:HE22	1:A:589:ASN:CG	2.04	0.61
1:A:177:TYR:CB	1:A:192:VAL:HG11	2.30	0.61
1:A:421:ARG:NE	1:A:422:ASP:OD1	2.31	0.61
1:B:537:ILE:HG23	1:B:558:GLU:HA	1.82	0.61
1:B:363:GLY:HA3	1:B:390:THR:HG22	1.83	0.61
1:B:567:GLU:HG3	1:B:574:ALA:HA	1.81	0.61
1:A:713:ILE:HB	1:A:764:LEU:HD11	1.82	0.61
1:A:330:GLY:O	1:A:333:VAL:N	2.30	0.61
1:A:812:ARG:HD2	1:A:820:TYR:HD2	1.63	0.61
1:A:305:ASP:C	1:A:307:SER:H	2.04	0.61
1:B:87:TRP:CZ3	1:B:421:ARG:HB3	2.36	0.61
1:A:627:THR:HB	1:A:633:LEU:HD13	1.83	0.60
1:A:857:ALA:HB1	1:A:864:LYS:HG2	1.82	0.60
1:B:103:LEU:O	1:B:166:ARG:HD3	2.01	0.60
1:A:87:TRP:CD2	1:A:426:VAL:HG11	2.36	0.60
1:A:90:ILE:CD1	1:A:420:ILE:HD12	2.30	0.60
1:A:305:ASP:HB2	1:A:347:LEU:HD11	1.84	0.60
1:B:519:ILE:CD1	1:B:523:ALA:HB2	2.32	0.60
1:B:86:ARG:HB3	1:B:111:GLN:OE1	2.02	0.59
1:A:605:GLN:HB2	1:A:648:GLN:HE22	1.66	0.59
1:B:178:PRO:HA	1:B:187:TRP:CG	2.37	0.59
1:B:509:LYS:H	1:B:509:LYS:CD	2.14	0.59
1:A:164:ASN:HB2	1:A:173:GLY:HA2	1.85	0.59
1:A:177:TYR:CD2	1:A:192:VAL:HG11	2.35	0.59
1:A:500:ARG:NH1	2:A:1057:HOH:O	2.33	0.59
1:B:95:ARG:HD2	1:B:438:TYR:OH	2.02	0.59
1:A:324:THR:O	1:A:328:LYS:HG2	2.02	0.59
1:A:326:LYS:HZ2	1:A:326:LYS:CB	2.16	0.59
1:B:884:ARG:HB3	1:B:884:ARG:NH1	2.18	0.59
1:A:221:LYS:HE2	2:A:1089:HOH:O	2.03	0.59
1:A:558:GLU:N	2:A:1058:HOH:O	2.35	0.58
1:A:301:LEU:HD11	1:A:347:LEU:HD13	1.85	0.58
1:A:638:LEU:HB3	1:B:179:HIS:CE1	2.37	0.58
1:B:418:ARG:HG2	1:B:418:ARG:HH11	1.68	0.58
1:A:857:ALA:O	1:A:860:GLY:N	2.37	0.58
1:B:328:LYS:HE3	1:B:332:TYR:CE2	2.39	0.58
1:B:354:GLU:CD	1:B:354:GLU:N	2.57	0.58
1:A:263:ARG:N	1:A:266:GLY:O	2.36	0.58
1:A:264:LEU:HD13	1:A:264:LEU:O	2.03	0.58

Continued on next page...

Continued from previous page...

Atom-1	Atom-2	Interatomic distance (Å)	Clash overlap (Å)
1:B:66:GLU:CD	1:B:66:GLU:H	2.07	0.58
1:B:638:LEU:HD23	1:B:829:GLY:O	2.03	0.57
1:A:334:ARG:HA	1:A:338:PHE:HB2	1.85	0.57
1:A:397:GLY:HA3	1:A:419:HIS:CE1	2.40	0.57
1:B:512:LYS:HG3	1:B:513:ASP:H	1.68	0.57
1:B:420:ILE:HG13	1:B:421:ARG:N	2.19	0.57
1:B:533:ARG:HH11	1:B:533:ARG:CB	2.14	0.57
1:A:330:GLY:O	1:A:331:ALA:C	2.43	0.57
1:B:884:ARG:HB3	1:B:884:ARG:HH11	1.68	0.57
1:A:638:LEU:CD2	1:A:828:PHE:HB3	2.35	0.57
1:A:95:ARG:HA	1:A:98:LYS:CE	2.35	0.57
1:A:720:GLU:HA	2:A:1117:HOH:O	2.05	0.57
1:B:521:ASP:HB2	1:B:568:GLY:HA2	1.87	0.57
1:A:326:LYS:HB3	1:A:326:LYS:NZ	2.20	0.57
1:A:472:LYS:NZ	1:A:474:GLU:OE2	2.32	0.57
1:B:520:ALA:O	1:B:521:ASP:HB3	2.04	0.57
1:A:479:GLN:HG3	2:A:983:HOH:O	2.05	0.56
1:B:537:ILE:HD13	1:B:538:TYR:O	2.05	0.56
1:A:360:ASN:OD1	1:A:361:ARG:N	2.33	0.56
1:B:159:GLN:HG3	1:B:438:TYR:CD2	2.41	0.56
1:B:506:LEU:CD2	1:B:515:LEU:HD12	2.35	0.56
1:A:333:VAL:C	1:A:335:GLU:H	2.09	0.56
1:A:882:ASN:HB3	1:A:885:LEU:CD2	2.33	0.56
1:A:95:ARG:HA	1:A:98:LYS:HE2	1.88	0.56
1:B:76:GLU:CD	1:B:76:GLU:H	2.09	0.56
1:A:260:ASN:O	1:A:262:GLN:N	2.38	0.56
1:B:64:PRO:HB2	1:B:66:GLU:OE2	2.06	0.56
1:A:142[O]:HIS:ND1	1:A:142[O]:HIS:N	2.51	0.56
1:A:530:GLY:HA2	1:A:533:ARG:NH1	2.20	0.56
1:A:214:ARG:HB3	1:A:216:LEU:HD13	1.87	0.56
1:A:863:ASP:O	1:A:866:VAL:HG22	2.05	0.56
1:B:537:ILE:CG2	1:B:558:GLU:HA	2.35	0.55
1:B:435:LYS:HB3	2:B:966:HOH:O	2.06	0.55
1:A:207:PHE:O	1:A:210:TYR:HB3	2.06	0.55
1:B:198:PRO:HG3	1:B:228:LEU:CD2	2.32	0.55
1:A:220:SER:HA	2:A:1038:HOH:O	2.05	0.55
1:A:867:VAL:HG22	1:B:779:PRO:HG3	1.88	0.55
1:B:87:TRP:HZ3	1:B:421:ARG:HB3	1.72	0.55
1:A:420:ILE:HG23	1:A:421:ARG:N	2.22	0.55
1:A:329:ASP:O	1:A:330:GLY:C	2.45	0.55
1:A:153:LEU:HD21	1:A:441:PHE:CE2	2.42	0.55

Continued on next page...

Continued from previous page...

Atom-1	Atom-2	Interatomic distance (Å)	Clash overlap (Å)
1:A:776:MET:HB2	1:B:821:ARG:NH1	2.22	0.54
1:B:483:ALA:HA	1:B:486:GLU:OE2	2.06	0.54
1:A:271:ASN:O	1:A:318:VAL:HG21	2.07	0.54
1:A:328:LYS:HG3	1:A:332:TYR:CZ	2.43	0.54
1:A:854:GLY:O	1:A:858:LYS:HD3	2.08	0.54
1:A:177:TYR:HB3	1:A:192:VAL:CG1	2.37	0.54
1:A:321:ASP:HA	2:A:1045:HOH:O	2.07	0.54
1:A:115:THR:O	1:A:119:VAL:HG23	2.08	0.54
1:A:859:ARG:NH1	1:A:861:GLU:OE1	2.41	0.54
1:A:56:ILE:HD13	1:A:276:ASN:HB3	1.89	0.54
1:A:522:GLU:CG	1:A:599:TYR:HE1	2.20	0.54
1:B:266:GLY:N	2:B:1026:HOH:O	2.40	0.54
1:A:646:HIS:CE1	1:A:657:SER:HB3	2.43	0.54
1:A:522:GLU:HG3	1:A:599:TYR:CE1	2.39	0.53
1:B:210:TYR:CZ	1:B:214:ARG:HD2	2.43	0.53
1:B:849:VAL:O	1:B:853:LEU:HG	2.08	0.53
1:B:499:VAL:O	1:B:502:LEU:HD22	2.08	0.53
1:B:584:SER:HA	1:B:587:THR:HG22	1.90	0.53
1:B:87:TRP:CD2	1:B:426:VAL:HG11	2.44	0.53
1:A:423:ARG:HD2	1:A:423:ARG:O	2.09	0.53
1:A:131:GLN:OE1	1:A:221:LYS:HD2	2.08	0.53
1:A:417:VAL:CG1	1:A:433:ILE:HD11	2.37	0.53
1:A:770:ASP:OD1	1:B:882:ASN:ND2	2.40	0.53
1:B:729:LEU:HD11	1:B:792:MET:CE	2.38	0.53
1:A:658:TYR:CD1	1:A:760:SER:HB2	2.43	0.53
1:A:662:TYR:CD1	1:A:699:PRO:HD2	2.44	0.52
1:A:692:LEU:HD13	1:A:733:SER:HB3	1.92	0.52
1:B:518:ILE:HG12	1:B:565:LEU:HB2	1.91	0.52
1:B:584:SER:HA	1:B:587:THR:CG2	2.38	0.52
1:A:430:ASP:O	1:A:433:ILE:HG22	2.10	0.52
1:A:80:ARG:HD2	1:A:447:GLU:OE2	2.10	0.52
1:A:210:TYR:CE1	1:A:214:ARG:HD2	2.45	0.52
1:B:517:PRO:HB2	1:B:564:ILE:HG12	1.92	0.52
1:A:322:TYR:HA	1:A:325:PHE:HD2	1.74	0.52
1:A:842:GLU:HG2	1:A:847:TYR:CZ	2.43	0.52
1:A:522:GLU:HB3	1:A:525:THR:OG1	2.10	0.52
1:B:143:ILE:HD12	1:B:143:ILE:O	2.10	0.52
1:A:90:ILE:HG22	1:A:91:MET:HE2	1.91	0.52
1:A:650:LEU:C	1:A:650:LEU:HD12	2.31	0.52
1:A:722:SER:O	1:A:723:LYS:CB	2.53	0.52
1:B:429:SER:C	1:B:431:ALA:H	2.12	0.52

Continued on next page...

Continued from previous page...

Atom-1	Atom-2	Interatomic distance (Å)	Clash overlap (Å)
1:A:113:SER:HB3	1:A:258:ASN:ND2	2.25	0.51
1:A:334:ARG:NH2	1:A:353:ASP:OD1	2.42	0.51
1:A:352:THR:HG23	1:A:355:GLN:NE2	2.25	0.51
1:A:515:LEU:HD23	1:A:593:ILE:HB	1.93	0.51
1:B:421:ARG:HA	1:B:426:VAL:HG23	1.92	0.51
1:A:570:ASN:OD1	1:B:236:PRO:HD3	2.11	0.51
1:A:862:ILE:CD1	1:A:866:VAL:HG21	2.37	0.51
1:A:309:LYS:HB3	1:A:344:THR:CG2	2.40	0.51
1:A:657:SER:HA	1:A:688:TYR:O	2.11	0.51
1:B:323:GLN:OE1	1:B:326:LYS:HD3	2.11	0.51
1:B:884:ARG:HH11	1:B:884:ARG:CB	2.23	0.51
1:A:326:LYS:CD	1:A:391:ILE:HG23	2.31	0.51
1:A:417:VAL:HG12	1:A:433:ILE:CD1	2.41	0.51
1:A:664:TYR:O	1:A:668:VAL:HG23	2.11	0.51
1:B:537:ILE:HD13	1:B:537:ILE:C	2.32	0.51
1:B:509:LYS:HG2	1:B:510:SER:N	2.26	0.50
1:A:328:LYS:HG3	1:A:332:TYR:CE1	2.46	0.50
1:A:350:ASP:O	1:A:351:TRP:O	2.28	0.50
1:A:828:PHE:CE2	1:B:653:PRO:HB2	2.46	0.50
1:B:324:THR:O	1:B:328:LYS:HG2	2.12	0.50
1:B:656:ILE:HG12	1:B:685:VAL:HG22	1.93	0.50
1:A:426:VAL:CG1	1:A:439:ILE:HD11	2.40	0.50
1:B:140:GLN:O	1:B:143:ILE:HG13	2.12	0.50
1:B:195:GLY:C	1:B:198:PRO:HD2	2.32	0.50
1:B:288:ASN:HD22	1:B:384:THR:HG23	1.77	0.50
1:B:312:GLN:O	1:B:316:GLU:HG2	2.12	0.50
1:B:844:ASP:O	1:B:848:VAL:HG23	2.12	0.50
1:A:252:ASN:HA	2:A:1107:HOH:O	2.11	0.50
1:A:637:GLY:O	1:A:641:GLU:HG3	2.12	0.50
1:A:417:VAL:O	1:A:420:ILE:HG22	2.12	0.49
1:A:794:ASP:HA	1:A:816:PRO:O	2.11	0.49
1:B:255:PHE:HB2	1:B:385:VAL:HG22	1.94	0.49
1:B:433:ILE:C	1:B:435:LYS:N	2.65	0.49
1:B:656:ILE:HG12	1:B:685:VAL:CG2	2.42	0.49
1:B:143:ILE:HD12	1:B:143:ILE:C	2.33	0.49
1:B:260:ASN:ND2	1:B:392:LYS:HE3	2.27	0.49
1:A:56:ILE:HA	2:A:1053:HOH:O	2.11	0.49
1:A:265:ASP:HB2	1:B:521:ASP:O	2.12	0.49
1:A:268:VAL:HG13	2:A:978:HOH:O	2.12	0.49
1:B:99:LYS:HE2	1:B:167:GLN:OE1	2.13	0.49
1:A:569:ILE:HG21	1:B:194:MET:HG3	1.93	0.49

Continued on next page...

Continued from previous page...

Atom-1	Atom-2	Interatomic distance (Å)	Clash overlap (Å)
1:A:329:ASP:O	1:A:332:TYR:HB3	2.12	0.49
1:B:90:ILE:O	1:B:94:LEU:HG	2.13	0.49
1:B:421:ARG:HD3	1:B:428:VAL:HG12	1.94	0.49
1:A:98:LYS:CE	1:A:436:LEU:HD12	2.43	0.49
1:B:747:LYS:HD2	1:B:747:LYS:N	2.27	0.49
1:A:714:TYR:HA	2:A:970:HOH:O	2.13	0.49
1:B:58:ASN:OD1	1:B:315:ASN:ND2	2.34	0.49
1:A:298:TRP:O	1:A:301:LEU:N	2.45	0.49
1:B:477:SER:O	1:B:480:ASP:HB2	2.13	0.49
1:B:638:LEU:HD21	1:B:828:PHE:CD1	2.47	0.49
1:A:237:GLU:CD	1:B:606:ARG:HH21	2.16	0.49
1:B:177:TYR:CD2	1:B:192:VAL:HG11	2.48	0.49
1:B:322:TYR:O	1:B:326:LYS:HG2	2.13	0.49
1:B:452:HIS:O	1:B:456:GLN:HG2	2.13	0.49
1:A:128:ARG:NH2	2:A:1071:HOH:O	2.45	0.48
1:B:431:ALA:O	1:B:434:GLU:OE1	2.31	0.48
1:B:65:VAL:HG21	1:B:299:ASP:CG	2.33	0.48
1:B:476:PRO:HB3	2:B:950:HOH:O	2.13	0.48
1:A:157:LEU:HD13	1:A:174:LEU:HD21	1.94	0.48
1:B:239:LYS:HA	1:B:242:ILE:HG23	1.94	0.48
1:B:423:ARG:O	1:B:423:ARG:HD3	2.13	0.48
1:A:638:LEU:HD21	1:A:828:PHE:HD1	1.77	0.48
1:A:302:LEU:HD23	1:A:310:LEU:HD13	1.95	0.48
1:B:261:LEU:HA	1:B:274:ILE:HD12	1.94	0.48
1:B:262:GLN:OE1	1:B:392:LYS:HB3	2.14	0.48
1:B:629:GLY:HA3	1:B:802:ASP:OD2	2.13	0.48
1:A:274:ILE:HG13	1:A:278:LEU:CD2	2.44	0.48
1:A:60:ILE:HG21	1:A:311:ILE:CD1	2.44	0.48
1:A:326:LYS:HZ2	1:A:326:LYS:HB3	1.76	0.48
1:A:330:GLY:O	1:A:332:TYR:N	2.47	0.48
1:A:524:ARG:NH1	1:A:529:GLU:OE2	2.47	0.48
1:A:214:ARG:HB3	1:A:216:LEU:CD1	2.44	0.48
1:A:340:LYS:HB2	1:A:340:LYS:HZ3	1.79	0.48
1:A:342:PRO:HD3	2:A:960:HOH:O	2.14	0.48
1:A:433:ILE:HG23	1:A:434:GLU:N	2.29	0.48
1:B:524:ARG:CG	1:B:524:ARG:HH11	2.26	0.48
1:A:331:ALA:HB2	1:A:353:ASP:OD2	2.13	0.47
1:B:106:HIS:N	1:B:106:HIS:CD2	2.81	0.47
1:B:729:LEU:HD11	1:B:792:MET:HE3	1.95	0.47
2:A:890:HOH:O	1:B:192:VAL:HG22	2.12	0.47
1:B:421:ARG:HA	1:B:426:VAL:CG2	2.44	0.47

Continued on next page...

Continued from previous page...

Atom-1	Atom-2	Interatomic distance (Å)	Clash overlap (Å)
1:B:505:MET:CE	1:B:674:LEU:HD13	2.44	0.47
1:A:508:ASN:OD1	1:A:510:SER:HB3	2.14	0.47
1:A:559:ASP:C	1:A:559:ASP:OD1	2.52	0.47
1:B:178:PRO:HA	1:B:187:TRP:CD1	2.49	0.47
1:A:325:PHE:HE1	1:A:336:HIS:HB2	1.79	0.47
1:A:300:GLU:OE2	1:A:303:ARG:NH1	2.48	0.47
1:A:177:TYR:HB3	1:A:192:VAL:HG13	1.96	0.47
1:A:351:TRP:CH2	1:A:359:LEU:HD21	2.50	0.47
1:A:719:ILE:HD12	1:A:742:ALA:HB1	1.95	0.47
1:A:728:LEU:HD12	1:A:742:ALA:HB2	1.96	0.47
1:A:857:ALA:O	1:A:858:LYS:C	2.53	0.47
1:B:85:ILE:CG1	1:B:153:LEU:HD22	2.44	0.47
1:B:145:PRO:HG3	1:B:165:PHE:CZ	2.50	0.47
1:B:274:ILE:HG12	1:B:319:ASP:OD2	2.13	0.47
1:A:519:ILE:CG2	1:A:520:ALA:N	2.77	0.47
1:A:638:LEU:HB3	1:B:179:HIS:ND1	2.30	0.47
1:B:150:ARG:O	1:B:154:GLU:HG3	2.15	0.47
1:B:168:GLU:OE1	1:B:175:SER:OG	2.26	0.47
1:A:395:GLY:O	1:A:419:HIS:HE1	1.98	0.47
1:B:151:ALA:HB3	1:B:157:LEU:HD12	1.96	0.47
1:B:650:LEU:HD12	1:B:650:LEU:C	2.35	0.47
1:A:302:LEU:CD2	1:A:310:LEU:HD13	2.45	0.47
1:A:526:PHE:HB3	1:A:597:ILE:HD13	1.97	0.47
1:A:775:ASN:OD1	1:A:784:ARG:N	2.43	0.47
1:A:859:ARG:CZ	1:A:861:GLU:OE1	2.63	0.47
1:B:583:THR:HG21	1:B:617:GLN:HG2	1.96	0.47
1:A:111:GLN:HA	1:A:111:GLN:OE1	2.15	0.46
1:B:433:ILE:C	1:B:435:LYS:H	2.18	0.46
1:A:194:MET:HE2	1:A:194:MET:N	2.31	0.46
1:B:282:PHE:CE2	1:B:385:VAL:HG21	2.50	0.46
1:B:725:LYS:HD2	1:B:795:ALA:CB	2.45	0.46
1:B:418:ARG:HD3	1:B:430:ASP:OD1	2.16	0.46
1:B:433:ILE:O	1:B:435:LYS:N	2.49	0.46
1:B:524:ARG:HH11	1:B:524:ARG:HG2	1.80	0.46
1:B:429:SER:C	1:B:431:ALA:N	2.69	0.46
1:B:627:THR:HB	1:B:633:LEU:HD22	1.96	0.46
1:A:197:GLY:N	1:A:198:PRO:HD2	2.31	0.46
1:A:333:VAL:O	1:A:335:GLU:N	2.49	0.46
1:A:819:ASP:OD1	1:A:855:GLU:HG2	2.16	0.46
1:B:462:LEU:HA	1:B:463:PRO:C	2.36	0.46
1:B:488:GLN:OE1	1:B:500:ARG:NH1	2.47	0.46

Continued on next page...

Continued from previous page...

Atom-1	Atom-2	Interatomic distance (Å)	Clash overlap (Å)
1:B:725:LYS:HE3	1:B:754:ASP:OD2	2.16	0.46
1:A:264:LEU:HD13	1:A:264:LEU:C	2.36	0.46
1:A:421:ARG:HD2	1:A:421:ARG:C	2.36	0.46
1:B:361:ARG:HD3	1:B:389:HIS:NE2	2.31	0.46
1:A:83:SER:HG	1:A:424:PHE:HB3	1.80	0.46
1:B:164:ASN:ND2	1:B:172:ASN:ND2	2.64	0.46
1:B:309:LYS:CB	1:B:343:GLU:HG3	2.46	0.46
1:B:189:PHE:HA	1:B:190:PRO:HD3	1.84	0.45
1:A:821:ARG:HD2	1:A:851:ALA:HB1	1.98	0.45
1:B:260:ASN:HA	1:B:390:THR:O	2.15	0.45
1:B:287:TRP:CE3	1:B:385:VAL:CG2	2.98	0.45
1:B:466:GLN:NE2	1:B:468:ASN:O	2.49	0.45
1:B:652:ILE:HD13	1:B:686:TYR:OH	2.16	0.45
1:A:806:LEU:HD11	1:B:806:LEU:HD11	1.96	0.45
1:B:147:VAL:HG11	1:B:187:TRP:CH2	2.51	0.45
1:A:233:MET:O	1:A:239:LYS:NZ	2.49	0.45
1:A:456:GLN:HA	1:A:456:GLN:HE21	1.81	0.45
1:A:82:ARG:O	1:A:85:ILE:HB	2.16	0.45
1:A:136:LEU:HD13	1:A:587:THR:HG21	1.98	0.45
1:A:298:TRP:O	1:A:299:ASP:C	2.54	0.45
1:A:725:LYS:HD3	1:A:726:VAL:N	2.31	0.45
1:B:428:VAL:HG22	1:B:433:ILE:HG13	1.98	0.45
1:A:60:ILE:HG22	1:A:314:MET:SD	2.56	0.45
1:B:250:LEU:C	1:B:252:ASN:H	2.20	0.45
1:B:518:ILE:O	1:B:596:TYR:HA	2.17	0.45
1:B:583:THR:O	1:B:587:THR:HG22	2.17	0.45
1:A:595:PHE:CE2	1:A:622:PHE:CD1	3.04	0.45
1:A:664:TYR:CG	1:A:701:MET:HB2	2.52	0.45
1:A:765:ALA:O	1:A:769:GLN:HG3	2.16	0.45
1:A:779:PRO:HG2	1:A:780:LEU:HD13	1.99	0.45
1:A:805:LYS:HB2	1:B:769:GLN:NE2	2.32	0.45
1:A:352:THR:OG1	1:A:355:GLN:HG3	2.17	0.45
1:A:374:LYS:HG3	1:A:378:GLU:OE2	2.17	0.45
1:A:273:LYS:HA	1:A:319:ASP:CG	2.38	0.45
1:A:491:GLU:OE1	1:A:696:TYR:HA	2.17	0.45
1:A:775:ASN:OD1	1:A:783:PRO:HA	2.17	0.45
1:B:318:VAL:HA	2:B:992:HOH:O	2.16	0.45
1:A:325:PHE:C	1:A:327:SER:N	2.70	0.45
1:B:288:ASN:ND2	1:B:384:THR:HG23	2.30	0.45
1:B:796:PRO:HA	2:B:1073:HOH:O	2.16	0.45
1:B:604:PHE:CE1	1:B:649:SER:HB3	2.53	0.44

Continued on next page...

Continued from previous page...

Atom-1	Atom-2	Interatomic distance (Å)	Clash overlap (Å)
1:A:507:LYS:HB3	1:A:507:LYS:HE2	1.73	0.44
1:B:263:ARG:NH1	1:B:266:GLY:O	2.51	0.44
1:B:421:ARG:HD3	1:B:428:VAL:CG1	2.47	0.44
1:A:261:LEU:HD12	1:A:323:GLN:OE1	2.17	0.44
1:A:333:VAL:C	1:A:335:GLU:N	2.71	0.44
1:A:340:LYS:HB2	1:A:340:LYS:HZ2	1.81	0.44
1:A:736:ARG:NH1	1:A:737:HIS:HE1	2.15	0.44
1:B:198:PRO:O	1:B:202:ILE:HG13	2.17	0.44
1:A:231:GLY:C	1:B:569:ILE:HD12	2.38	0.44
1:A:672:ASP:O	1:A:676:ARG:HG3	2.17	0.44
1:A:867:VAL:O	1:A:871:ILE:HG13	2.17	0.44
1:B:82:ARG:HE	1:B:86:ARG:NH2	2.15	0.44
1:B:634:ASN:HB2	1:B:832:ASP:O	2.16	0.44
1:B:843:VAL:O	1:B:843:VAL:CG1	2.66	0.44
1:A:352:THR:O	1:A:355:GLN:N	2.50	0.44
1:A:537:ILE:O	1:A:558:GLU:HA	2.17	0.44
1:A:601:MET:HE1	1:A:641:GLU:O	2.18	0.44
1:B:288:ASN:O	1:B:384:THR:HG23	2.18	0.44
1:B:493:SER:HB2	1:B:692:LEU:O	2.18	0.44
1:B:656:ILE:HD11	1:B:685:VAL:HG21	1.99	0.44
1:B:871:ILE:HG23	1:B:876:ILE:CG2	2.48	0.44
1:A:103:LEU:O	1:B:635:GLY:HA3	2.18	0.44
1:A:207:PHE:CE1	1:A:581:ALA:HB2	2.53	0.44
1:A:305:ASP:O	1:A:307:SER:N	2.50	0.44
1:A:498:PHE:CE1	1:A:624:ILE:HG13	2.52	0.44
1:B:521:ASP:HA	1:B:566:GLN:OE1	2.17	0.44
1:B:718:THR:HA	1:B:753:SER:O	2.17	0.44
1:A:318:VAL:O	1:A:321:ASP:HB2	2.18	0.44
1:B:497:ALA:HB2	1:B:663:ALA:HB2	2.00	0.44
1:B:745:LEU:HB3	1:B:751:VAL:HB	2.00	0.44
1:A:237:GLU:CD	1:A:237:GLU:H	2.20	0.44
1:B:287:TRP:HE3	1:B:385:VAL:HG23	1.78	0.44
1:B:415:ASP:OD1	1:B:418:ARG:HD3	2.17	0.44
1:B:782:THR:HA	1:B:783:PRO:HD3	1.86	0.44
1:A:263:ARG:HD2	1:B:521:ASP:OD1	2.18	0.43
1:A:356:ILE:HG22	1:A:357:TRP:N	2.33	0.43
1:A:520:ALA:O	1:A:522:GLU:N	2.49	0.43
1:A:774:TRP:CZ3	1:A:784:ARG:HG3	2.53	0.43
1:A:821:ARG:HH22	1:A:854:GLY:HA3	1.82	0.43
1:B:195:GLY:O	1:B:198:PRO:HD2	2.18	0.43
1:B:226:ALA:HB3	1:B:255:PHE:CD1	2.53	0.43

Continued on next page...

Continued from previous page...

Atom-1	Atom-2	Interatomic distance (Å)	Clash overlap (Å)
1:A:143:ILE:HD12	1:A:147:VAL:HG23	1.99	0.43
1:A:341:TYR:C	1:A:343:GLU:H	2.22	0.43
1:A:601:MET:CE	1:A:641:GLU:O	2.66	0.43
1:B:230:ASP:OD2	1:B:259:CYS:HA	2.18	0.43
1:A:567:GLU:OE1	1:A:567:GLU:HA	2.18	0.43
1:A:90:ILE:HD12	1:A:420:ILE:CD1	2.44	0.43
1:A:363:GLY:O	1:A:369:ILE:HD11	2.18	0.43
1:A:399:ALA:O	1:A:400:ALA:HB2	2.19	0.43
1:A:305:ASP:C	1:A:307:SER:N	2.70	0.43
1:A:521:ASP:OD1	1:B:264:LEU:HD23	2.17	0.43
1:B:261:LEU:HA	1:B:274:ILE:CD1	2.49	0.43
1:B:658:TYR:CG	1:B:669:ILE:HD13	2.53	0.43
1:B:871:ILE:HG23	1:B:876:ILE:HG22	2.01	0.43
1:A:332:TYR:O	1:A:336:HIS:ND1	2.51	0.43
1:A:526:PHE:O	1:A:527:GLY:C	2.56	0.43
1:B:158:THR:OG1	1:B:161:GLN:HG3	2.18	0.43
1:A:230:ASP:OD2	1:A:259:CYS:HA	2.19	0.43
1:B:157:LEU:HA	1:B:161:GLN:OE1	2.19	0.43
1:B:800:SER:OG	1:B:843:VAL:HG13	2.18	0.43
1:B:739:ARG:HG2	1:B:755:VAL:HG11	2.01	0.43
1:A:159:GLN:HG3	1:A:438:TYR:CD2	2.53	0.43
1:A:305:ASP:CB	1:A:347:LEU:HD11	2.48	0.43
1:A:310:LEU:O	1:A:314:MET:HG3	2.18	0.43
1:B:415:ASP:C	1:B:417:VAL:H	2.22	0.43
1:B:427:PRO:HG2	1:B:439:ILE:HD13	2.01	0.43
1:A:325:PHE:O	1:A:326:LYS:C	2.56	0.43
1:A:874:PHE:HZ	2:A:1068:HOH:O	2.01	0.43
1:B:97:SER:O	1:B:98:LYS:C	2.57	0.43
1:A:128:ARG:NH2	1:A:464:SER:OG	2.51	0.42
1:A:426:VAL:O	1:A:428:VAL:N	2.49	0.42
1:A:832:ASP:OD2	1:B:169:VAL:CB	2.65	0.42
1:A:698:MET:HB3	2:A:1120:HOH:O	2.19	0.42
1:A:714:TYR:CE1	1:A:757:SER:HB3	2.54	0.42
1:B:397:GLY:O	1:B:398:ASP:C	2.57	0.42
1:A:598:TYR:HB2	2:A:927:HOH:O	2.20	0.42
1:A:375:LYS:O	1:A:375:LYS:HD3	2.19	0.42
1:A:509:LYS:CG	1:A:510:SER:N	2.83	0.42
1:A:525:THR:HG21	1:A:599:TYR:OH	2.19	0.42
1:A:531:LEU:HA	1:A:534:GLN:HB3	2.02	0.42
1:B:729:LEU:N	1:B:729:LEU:HD12	2.35	0.42
1:A:63:ILE:HA	1:A:64:PRO:HD2	1.88	0.42

Continued on next page...

Continued from previous page...

Atom-1	Atom-2	Interatomic distance (Å)	Clash overlap (Å)
1:A:193:SER:HB3	1:A:196:LEU:HD12	2.01	0.42
1:A:540:PRO:HA	1:A:560:GLU:HB3	2.00	0.42
1:A:807:PHE:O	1:A:810:GLN:HG2	2.19	0.42
1:B:447:GLU:OE1	1:B:447:GLU:N	2.46	0.42
1:B:771:CYS:HB3	1:B:784:ARG:O	2.18	0.42
1:A:297:ARG:HG2	1:A:297:ARG:HH11	1.84	0.42
1:A:601:MET:HG2	1:A:639:GLN:O	2.19	0.42
1:A:633:LEU:HD23	1:A:640:HIS:HB3	2.01	0.42
1:B:453:ALA:O	1:B:457:LYS:HG3	2.20	0.42
1:B:723:LYS:HB2	1:B:750:GLY:O	2.19	0.42
1:A:101:LEU:HD13	1:B:833:SER:HB3	2.01	0.42
1:A:298:TRP:CE2	1:A:359:LEU:HB3	2.55	0.42
1:B:140:GLN:HG3	1:B:227:PHE:HB3	2.01	0.42
1:A:187:TRP:O	1:A:465:ARG:HD2	2.20	0.42
1:A:398:ASP:CG	1:A:399:ALA:H	2.23	0.42
1:B:61:ASN:HA	1:B:291:LYS:O	2.20	0.42
1:B:268:VAL:HG12	1:B:269:THR:HG23	2.02	0.42
1:A:93:VAL:HG21	1:A:106:HIS:O	2.20	0.42
1:A:341:TYR:O	1:A:343:GLU:N	2.52	0.42
1:B:77:LEU:HD21	1:B:446:GLU:HG2	2.01	0.42
1:B:421:ARG:NH1	1:B:421:ARG:CG	2.74	0.42
1:A:332:TYR:CZ	1:A:336:HIS:NE2	2.88	0.41
1:A:432:ASP:O	1:A:437:PRO:HD3	2.20	0.41
1:A:273:LYS:NZ	1:A:317:THR:O	2.40	0.41
1:A:726:VAL:O	1:A:753:SER:HA	2.20	0.41
1:A:764:LEU:HD13	1:A:788:ILE:HD12	2.02	0.41
1:A:260:ASN:HB3	1:A:390:THR:OG1	2.20	0.41
1:A:329:ASP:O	1:A:330:GLY:O	2.37	0.41
1:B:332:TYR:CE1	1:B:336:HIS:CG	3.08	0.41
1:A:326:LYS:CB	1:A:326:LYS:NZ	2.78	0.41
1:A:329:ASP:O	1:A:332:TYR:CB	2.68	0.41
1:A:529:GLU:HG2	1:A:530:GLY:H	1.86	0.41
1:A:716:LEU:HD23	1:A:716:LEU:HA	1.87	0.41
1:B:197:GLY:N	1:B:198:PRO:CD	2.83	0.41
1:B:418:ARG:HG2	1:B:418:ARG:NH1	2.34	0.41
1:B:93:VAL:O	1:B:96:ALA:HB3	2.20	0.41
1:B:527:GLY:C	1:B:529:GLU:OE1	2.59	0.41
1:B:729:LEU:HD11	1:B:792:MET:HE1	2.03	0.41
1:A:274:ILE:HG13	1:A:278:LEU:HD22	2.02	0.41
1:B:62:THR:HB	1:B:290:ILE:HG23	2.02	0.41
1:B:529:GLU:HG2	1:B:530:GLY:N	2.35	0.41

Continued on next page...

Continued from previous page...

Atom-1	Atom-2	Interatomic distance (Å)	Clash overlap (Å)
1:B:651:THR:O	1:B:653:PRO:HD3	2.20	0.41
1:A:164:ASN:CB	1:A:173:GLY:HA2	2.51	0.41
1:A:294:TRP:HA	1:A:362:GLY:H	1.86	0.41
1:A:604:PHE:O	1:A:608:GLY:N	2.52	0.41
1:B:350:ASP:OD1	1:B:350:ASP:N	2.53	0.41
1:B:785:VAL:HA	1:B:786:PRO:HD3	1.96	0.41
1:A:88:ASN:OD1	1:A:438:TYR:HA	2.21	0.41
1:A:269:THR:HA	2:A:964:HOH:O	2.21	0.41
1:A:327:SER:O	1:A:328:LYS:HG2	2.20	0.41
1:A:674:LEU:HD23	1:A:674:LEU:HA	1.84	0.41
1:A:866:VAL:HG23	1:A:867:VAL:N	2.35	0.41
1:B:106:HIS:CE1	1:B:142[A]:HIS:ND1	2.89	0.41
1:B:417:VAL:C	1:B:419:HIS:N	2.73	0.41
1:B:522:GLU:HB3	1:B:525:THR:HB	2.02	0.41
1:B:525:THR:HG22	1:B:525:THR:O	2.19	0.41
1:B:734:ILE:HG12	1:B:802:ASP:HB2	2.03	0.41
1:B:736:ARG:HD3	2:B:910:HOH:O	2.21	0.41
1:A:685:VAL:CG1	1:A:686:TYR:N	2.83	0.40
2:A:1031:HOH:O	1:B:885:LEU:HD23	2.20	0.40
1:B:317:THR:CG2	1:B:321:ASP:HB2	2.51	0.40
1:A:132:ASP:HA	1:A:217:LYS:CE	2.50	0.40
1:A:216:LEU:HD23	1:A:592:MET:SD	2.62	0.40
1:A:313:LEU:HD21	1:A:337:PHE:O	2.21	0.40
1:A:328:LYS:HD3	1:A:328:LYS:HA	1.87	0.40
1:A:352:THR:O	1:A:354:GLU:N	2.54	0.40
1:A:521:ASP:HA	1:A:566:GLN:OE1	2.22	0.40
1:A:647:ILE:HG22	1:B:647:ILE:HG22	2.03	0.40
1:A:148:TYR:CD2	1:A:174:LEU:HD13	2.56	0.40
1:A:274:ILE:O	1:A:278:LEU:HD22	2.21	0.40
1:B:354:GLU:O	1:B:357:TRP:N	2.54	0.40
1:A:214:ARG:NH2	2:A:928:HOH:O	2.48	0.40
1:A:735:LEU:O	1:A:738:VAL:HG22	2.21	0.40
1:B:274:ILE:CG1	1:B:319:ASP:OD2	2.70	0.40
1:A:71:TYR:HA	1:A:72:PRO:HD2	1.96	0.40
1:A:638:LEU:HD23	1:A:828:PHE:HB3	2.02	0.40
1:A:727:GLN:HG2	1:A:754:ASP:HB2	2.04	0.40
1:B:325:PHE:O	1:B:328:LYS:HB2	2.21	0.40
1:B:737:HIS:CE1	1:B:838:ARG:NH1	2.89	0.40

There are no symmetry-related clashes.

5.3 Torsion angles [i](#)

5.3.1 Protein backbone [i](#)

In the following table, the Percentiles column shows the percent Ramachandran outliers of the chain as a percentile score with respect to all X-ray entries followed by that with respect to entries of similar resolution.

The Analysed column shows the number of residues for which the backbone conformation was analysed, and the total number of residues.

Mol	Chain	Analysed	Favoured	Allowed	Outliers	Percentiles
1	A	796/886 (90%)	712 (89%)	68 (8%)	16 (2%)	7 6
1	B	796/886 (90%)	722 (91%)	67 (8%)	7 (1%)	17 19
All	All	1592/1772 (90%)	1434 (90%)	135 (8%)	23 (1%)	11 10

All (23) Ramachandran outliers are listed below:

Mol	Chain	Res	Type
1	A	261	LEU
1	A	326	LYS
1	A	330	GLY
1	A	351	TRP
1	A	398	ASP
1	B	398	ASP
1	A	306	THR
1	A	331	ALA
1	A	334	ARG
1	A	399	ALA
1	A	269	THR
1	A	522	GLU
1	A	723	LYS
1	B	432	ASP
1	B	489	SER
1	A	328	LYS
1	A	342	PRO
1	A	353	ASP
1	B	434	GLU
1	B	570	ASN
1	A	178	PRO
1	B	416	GLY
1	B	184	PRO

5.3.2 Protein sidechains [i](#)

In the following table, the Percentiles column shows the percent sidechain outliers of the chain as a percentile score with respect to all X-ray entries followed by that with respect to entries of similar resolution.

The Analysed column shows the number of residues for which the sidechain conformation was analysed, and the total number of residues.

Mol	Chain	Analysed	Rotameric	Outliers	Percentiles	
1	A	666/735 (91%)	637 (96%)	29 (4%)	28	39
1	B	666/735 (91%)	623 (94%)	43 (6%)	17	22
All	All	1332/1470 (91%)	1260 (95%)	72 (5%)	22	30

All (72) residues with a non-rotameric sidechain are listed below:

Mol	Chain	Res	Type
1	A	79	ARG
1	A	83	SER
1	A	112	SER
1	A	172	ASN
1	A	182	LEU
1	A	251	ASP
1	A	264	LEU
1	A	269	THR
1	A	278	LEU
1	A	301	LEU
1	A	306	THR
1	A	310	LEU
1	A	312	GLN
1	A	375	LYS
1	A	420	ILE
1	A	437	PRO
1	A	479	GLN
1	A	502	LEU
1	A	525	THR
1	A	674	LEU
1	A	675	GLU
1	A	685	VAL
1	A	711	LYS
1	A	716	LEU
1	A	759	THR
1	A	776	MET
1	A	780	LEU

Continued on next page...

Continued from previous page...

Mol	Chain	Res	Type
1	A	867	VAL
1	A	885	LEU
1	B	77	LEU
1	B	79	ARG
1	B	156	ARG
1	B	192	VAL
1	B	196	LEU
1	B	206	LYS
1	B	209	LYS
1	B	211	LEU
1	B	228	LEU
1	B	230	ASP
1	B	232	GLU
1	B	234	ASP
1	B	243	THR
1	B	244	ILE
1	B	274	ILE
1	B	289	VAL
1	B	301	LEU
1	B	306	THR
1	B	378	GLU
1	B	398	ASP
1	B	421	ARG
1	B	422	ASP
1	B	423	ARG
1	B	432	ASP
1	B	433	ILE
1	B	435	LYS
1	B	475	LEU
1	B	490	LYS
1	B	502	LEU
1	B	509	LYS
1	B	522	GLU
1	B	524	ARG
1	B	529	GLU
1	B	537	ILE
1	B	539	SER
1	B	566	GLN
1	B	610	LEU
1	B	638	LEU
1	B	718	THR
1	B	725	LYS

Continued on next page...

Continued from previous page...

Mol	Chain	Res	Type
1	B	747	LYS
1	B	772	GLU
1	B	832	ASP

Sometimes sidechains can be flipped to improve hydrogen bonding and reduce clashes. All (13) such sidechains are listed below:

Mol	Chain	Res	Type
1	A	288	ASN
1	A	355	GLN
1	A	419	HIS
1	A	456	GLN
1	A	466	GLN
1	A	737	HIS
1	B	106	HIS
1	B	131	GLN
1	B	164	ASN
1	B	288	ASN
1	B	377	GLN
1	B	697	HIS
1	B	737	HIS

5.3.3 RNA [i](#)

There are no RNA molecules in this entry.

5.4 Non-standard residues in protein, DNA, RNA chains [i](#)

There are no non-standard protein/DNA/RNA residues in this entry.

5.5 Carbohydrates [i](#)

There are no monosaccharides in this entry.

5.6 Ligand geometry [i](#)

There are no ligands in this entry.

5.7 Other polymers [i](#)

There are no such residues in this entry.

5.8 Polymer linkage issues [i](#)

There are no chain breaks in this entry.

6 Fit of model and data [i](#)

6.1 Protein, DNA and RNA chains [i](#)

In the following table, the column labelled ‘#RSRZ > 2’ contains the number (and percentage) of RSRZ outliers, followed by percent RSRZ outliers for the chain as percentile scores relative to all X-ray entries and entries of similar resolution. The OWAB column contains the minimum, median, 95th percentile and maximum values of the occupancy-weighted average B-factor per residue. The column labelled ‘Q < 0.9’ lists the number of (and percentage) of residues with an average occupancy less than 0.9.

Mol	Chain	Analysed	<RSRZ>	#RSRZ>2	OWAB(Å ²)	Q<0.9
1	A	801/886 (90%)	-0.21	10 (1%) 79 83	2, 13, 35, 44	0
1	B	801/886 (90%)	-0.27	6 (0%) 87 91	3, 14, 31, 45	0
All	All	1602/1772 (90%)	-0.24	16 (0%) 82 86	2, 13, 34, 45	0

All (16) RSRZ outliers are listed below:

Mol	Chain	Res	Type	RSRZ
1	A	267	PRO	4.7
1	B	400	ALA	4.2
1	A	268	VAL	4.0
1	B	399	ALA	3.2
1	A	269	THR	3.1
1	A	271	ASN	3.1
1	B	397	GLY	3.0
1	A	332	TYR	3.0
1	B	414	MET	2.9
1	A	270	GLY	2.5
1	A	333	VAL	2.5
1	A	400	ALA	2.4
1	B	417	VAL	2.2
1	B	415	ASP	2.2
1	A	530	GLY	2.1
1	A	264	LEU	2.0

6.2 Non-standard residues in protein, DNA, RNA chains [i](#)

There are no non-standard protein/DNA/RNA residues in this entry.

6.3 Carbohydrates [i](#)

There are no monosaccharides in this entry.

6.4 Ligands [i](#)

There are no ligands in this entry.

6.5 Other polymers [i](#)

There are no such residues in this entry.