



Full wwPDB X-ray Structure Validation Report ⓘ

May 26, 2020 – 01:17 pm BST

PDB ID : 5G3T
Title : The structure of the L-tryptophan oxidase VioA from *Chromobacterium violaceum*
Authors : Krausze, J.; Rabe, J.; Moser, J.
Deposited on : 2016-05-01
Resolution : 1.80 Å(reported)

This is a Full wwPDB X-ray Structure Validation Report for a publicly released PDB entry.

We welcome your comments at validation@mail.wwpdb.org

A user guide is available at

<https://www.wwpdb.org/validation/2017/XrayValidationReportHelp>

with specific help available everywhere you see the ⓘ symbol.

The following versions of software and data (see [references ⓘ](#)) were used in the production of this report:

MolProbity : 4.02b-467
Mogul : 1.8.5 (274361), CSD as541be (2020)
Xtriage (Phenix) : 1.13
EDS : 2.11
buster-report : 1.1.7 (2018)
Percentile statistics : 20191225.v01 (using entries in the PDB archive December 25th 2019)
Refmac : 5.8.0158
CCP4 : 7.0.044 (Gargrove)
Ideal geometry (proteins) : Engh & Huber (2001)
Ideal geometry (DNA, RNA) : Parkinson et al. (1996)
Validation Pipeline (wwPDB-VP) : 2.11

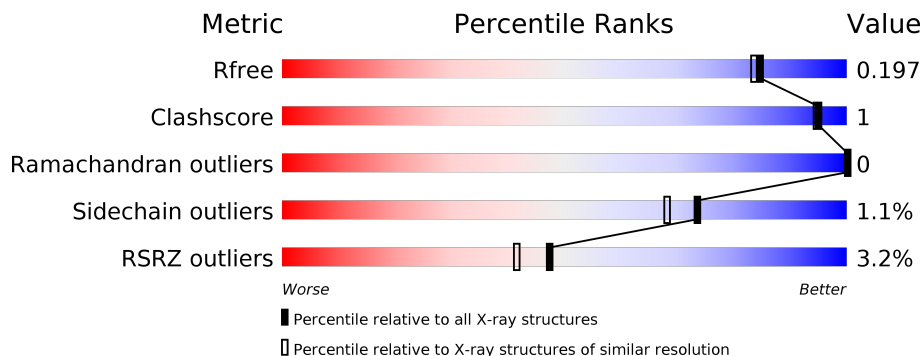
1 Overall quality at a glance

The following experimental techniques were used to determine the structure:

X-RAY DIFFRACTION

The reported resolution of this entry is 1.80 Å.

Percentile scores (ranging between 0-100) for global validation metrics of the entry are shown in the following graphic. The table shows the number of entries on which the scores are based.



Metric	Whole archive (#Entries)	Similar resolution (#Entries, resolution range(Å))
R_{free}	130704	5950 (1.80-1.80)
Clashscore	141614	6793 (1.80-1.80)
Ramachandran outliers	138981	6697 (1.80-1.80)
Sidechain outliers	138945	6696 (1.80-1.80)
RSRZ outliers	127900	5850 (1.80-1.80)

The table below summarises the geometric issues observed across the polymeric chains and their fit to the electron density. The red, orange, yellow and green segments on the lower bar indicate the fraction of residues that contain outliers for ≥ 3 , 2, 1 and 0 types of geometric quality criteria respectively. A grey segment represents the fraction of residues that are not modelled. The numeric value for each fraction is indicated below the corresponding segment, with a dot representing fractions $\leq 5\%$. The upper red bar (where present) indicates the fraction of residues that have poor fit to the electron density. The numeric value is given above the bar.

Mol	Chain	Length	Quality of chain
1	A	423	<p>4% 94%</p>
1	B	423	<p>4% 94%</p>
1	C	423	<p>2% 96%</p>
1	D	423	<p>2% 95%</p>

2 Entry composition [i](#)

There are 7 unique types of molecules in this entry. The entry contains 27004 atoms, of which 12532 are hydrogens and 0 are deuteriums.

In the tables below, the ZeroOcc column contains the number of atoms modelled with zero occupancy, the AltConf column contains the number of residues with at least one atom in alternate conformation and the Trace column contains the number of residues modelled with at most 2 atoms.

- Molecule 1 is a protein called L-TRYPTOPHAN OXIDASE VIOA.

Mol	Chain	Residues	Atoms					ZeroOcc	AltConf	Trace	
			Total	C	H	N	O				S
1	A	413	6306	2049	3092	563	584	18	0	6	0
1	B	413	6288	2054	3078	555	583	18	0	8	0
1	C	414	6361	2059	3127	569	587	19	0	10	0
1	D	412	6256	2041	3062	553	582	18	0	7	0

There are 24 discrepancies between the modelled and reference sequences:

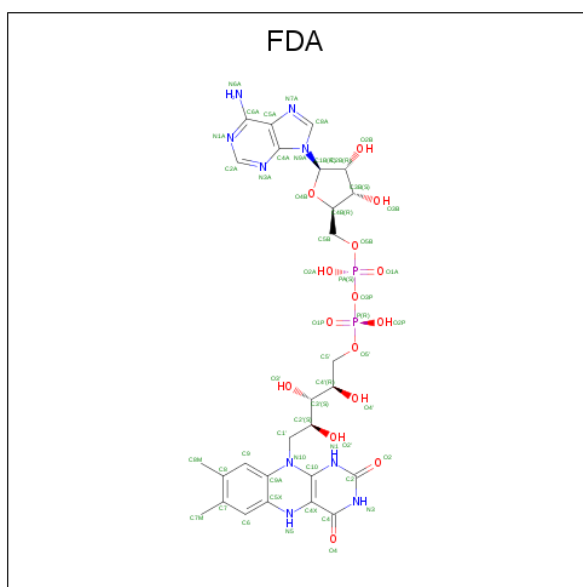
Chain	Residue	Modelled	Actual	Comment	Reference
A	-4	GLY	-	expression tag	UNP Q9S3V1
A	-3	PRO	-	expression tag	UNP Q9S3V1
A	-2	LEU	-	expression tag	UNP Q9S3V1
A	-1	GLY	-	expression tag	UNP Q9S3V1
A	0	SER	-	expression tag	UNP Q9S3V1
A	3	GLN	HIS	engineered mutation	UNP Q9S3V1
B	-4	GLY	-	expression tag	UNP Q9S3V1
B	-3	PRO	-	expression tag	UNP Q9S3V1
B	-2	LEU	-	expression tag	UNP Q9S3V1
B	-1	GLY	-	expression tag	UNP Q9S3V1
B	0	SER	-	expression tag	UNP Q9S3V1
B	3	GLN	HIS	engineered mutation	UNP Q9S3V1
C	-4	GLY	-	expression tag	UNP Q9S3V1
C	-3	PRO	-	expression tag	UNP Q9S3V1
C	-2	LEU	-	expression tag	UNP Q9S3V1
C	-1	GLY	-	expression tag	UNP Q9S3V1
C	0	SER	-	expression tag	UNP Q9S3V1
C	3	GLN	HIS	engineered mutation	UNP Q9S3V1
D	-4	GLY	-	expression tag	UNP Q9S3V1
D	-3	PRO	-	expression tag	UNP Q9S3V1
D	-2	LEU	-	expression tag	UNP Q9S3V1

Continued on next page...

Continued from previous page...

Chain	Residue	Modelled	Actual	Comment	Reference
D	-1	GLY	-	expression tag	UNP Q9S3V1
D	0	SER	-	expression tag	UNP Q9S3V1
D	3	GLN	HIS	engineered mutation	UNP Q9S3V1

- Molecule 2 is DIHYDROFLAVINE-ADENINE DINUCLEOTIDE (three-letter code: FDA) (formula: $C_{27}H_{35}N_9O_{15}P_2$).



Mol	Chain	Residues	Atoms					ZeroOcc	AltConf	
			Total	C	H	N	O			P
2	A	1	Total	C	H	N	O	P	0	0
			85	27	32	9	15	2		
2	B	1	Total	C	H	N	O	P	0	0
			85	27	32	9	15	2		
2	C	1	Total	C	H	N	O	P	0	0
			85	27	32	9	15	2		
2	D	1	Total	C	H	N	O	P	0	0
			86	27	33	9	15	2		

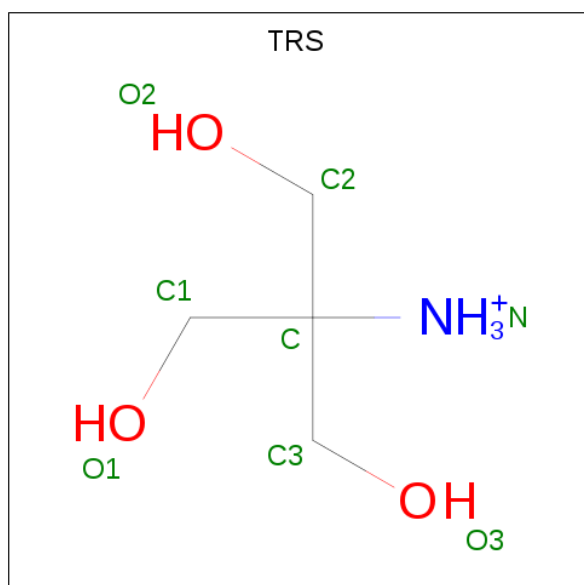
- Molecule 3 is MAGNESIUM ION (three-letter code: MG) (formula: Mg).

Mol	Chain	Residues	Atoms		ZeroOcc	AltConf
3	B	2	Total	Mg	0	0
			2	2		
3	A	1	Total	Mg	0	0
			1	1		
3	D	3	Total	Mg	0	0
			3	3		

- Molecule 4 is CHLORIDE ION (three-letter code: CL) (formula: Cl).

Mol	Chain	Residues	Atoms	ZeroOcc	AltConf
4	B	2	Total Cl 2 2	0	0
4	A	2	Total Cl 2 2	0	0
4	D	2	Total Cl 2 2	0	0
4	C	5	Total Cl 5 5	0	0

- Molecule 5 is 2-AMINO-2-HYDROXYMETHYL-PROPANE-1,3-DIOL (three-letter code: TRS) (formula: C₄H₁₂NO₃).



Mol	Chain	Residues	Atoms	ZeroOcc	AltConf
5	B	1	Total C H N O 20 4 12 1 3	0	0
5	C	1	Total C H N O 20 4 12 1 3	0	0
5	D	1	Total C H N O 20 4 12 1 3	0	0

- Molecule 6 is GLYCEROL (three-letter code: GOL) (formula: C₃H₈O₃).



Mol	Chain	Residues	Atoms				ZeroOcc	AltConf
			Total	C	H	O		
6	C	1	14	3	8	3	0	0

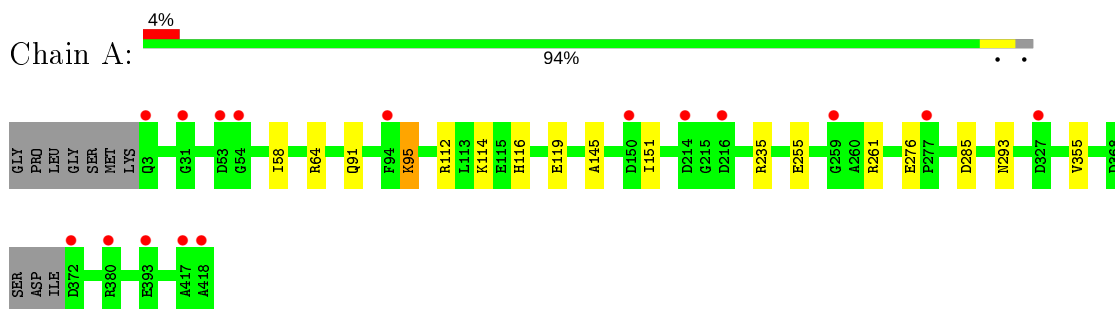
- Molecule 7 is water.

Mol	Chain	Residues	Atoms		ZeroOcc	AltConf
7	A	357	Total	O	0	0
			357	357		
7	B	300	Total	O	0	0
			300	300		
7	C	358	Total	O	0	0
			358	358		
7	D	346	Total	O	0	0
			346	346		

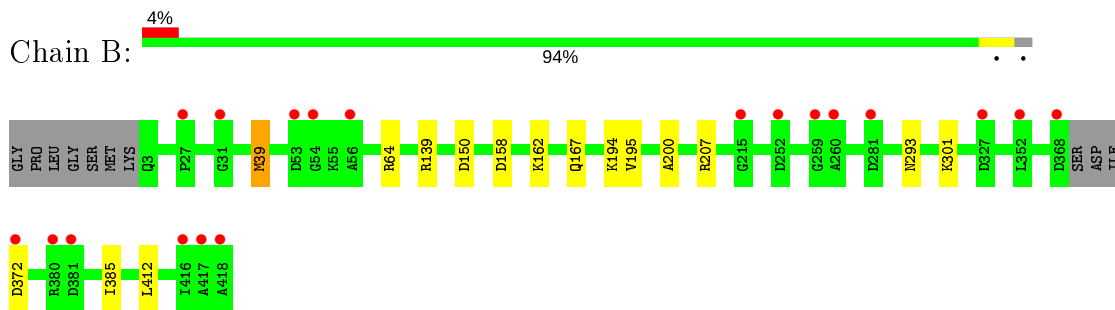
3 Residue-property plots [i](#)

These plots are drawn for all protein, RNA and DNA chains in the entry. The first graphic for a chain summarises the proportions of the various outlier classes displayed in the second graphic. The second graphic shows the sequence view annotated by issues in geometry and electron density. Residues are color-coded according to the number of geometric quality criteria for which they contain at least one outlier: green = 0, yellow = 1, orange = 2 and red = 3 or more. A red dot above a residue indicates a poor fit to the electron density ($RSRZ > 2$). Stretches of 2 or more consecutive residues without any outlier are shown as a green connector. Residues present in the sample, but not in the model, are shown in grey.

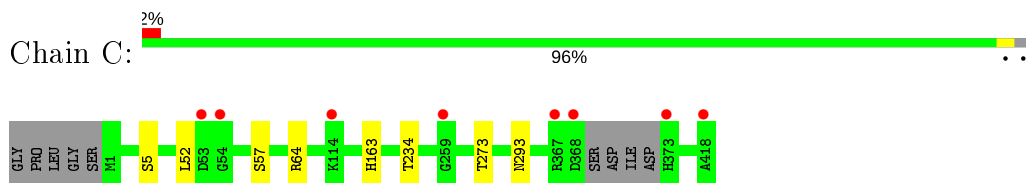
- Molecule 1: L-TRYPTOPHAN OXIDASE VIOA



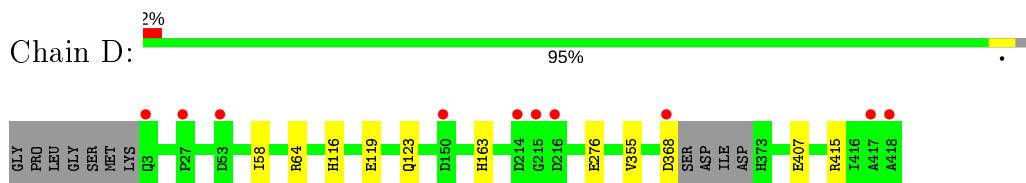
- Molecule 1: L-TRYPTOPHAN OXIDASE VIOA



- Molecule 1: L-TRYPTOPHAN OXIDASE VIOA



- Molecule 1: L-TRYPTOPHAN OXIDASE VIOA



4 Data and refinement statistics i

Property	Value	Source
Space group	P 1 21 1	Depositor
Cell constants a, b, c, α , β , γ	68.09Å 89.16Å 144.43Å 90.00° 92.66° 90.00°	Depositor
Resolution (Å)	19.99 – 1.80 19.99 – 1.80	Depositor EDS
% Data completeness (in resolution range)	98.5 (19.99-1.80) 92.3 (19.99-1.80)	Depositor EDS
R_{merge}	0.10	Depositor
R_{sym}	(Not available)	Depositor
$\langle I/\sigma(I) \rangle$ ¹	1.67 (at 1.80Å)	Xtrriage
Refinement program	PHENIX (PHENIX.REFINE)	Depositor
R, R_{free}	0.157 , 0.192 0.162 , 0.197	Depositor DCC
R_{free} test set	7848 reflections (5.00%)	wwPDB-VP
Wilson B-factor (Å ²)	21.1	Xtrriage
Anisotropy	0.601	Xtrriage
Bulk solvent k_{sol} (e/Å ³), B_{sol} (Å ²)	0.43 , 53.1	EDS
L-test for twinning ²	$\langle L \rangle = 0.50$, $\langle L^2 \rangle = 0.33$	Xtrriage
Estimated twinning fraction	0.000 for h,-k,-l	Xtrriage
F_o, F_c correlation	0.97	EDS
Total number of atoms	27004	wwPDB-VP
Average B, all atoms (Å ²)	28.0	wwPDB-VP

Xtrriage's analysis on translational NCS is as follows: *The analyses of the Patterson function reveals a significant off-origin peak that is 45.09 % of the origin peak, indicating pseudo-translational symmetry. The chance of finding a peak of this or larger height randomly in a structure without pseudo-translational symmetry is equal to 1.3885e-04. The detected translational NCS is most likely also responsible for the elevated intensity ratio.*

¹Intensities estimated from amplitudes.

²Theoretical values of $\langle |L| \rangle$, $\langle L^2 \rangle$ for acentric reflections are 0.5, 0.333 respectively for untwinned datasets, and 0.375, 0.2 for perfectly twinned datasets.

5 Model quality [i](#)

5.1 Standard geometry [i](#)

Bond lengths and bond angles in the following residue types are not validated in this section: FDA, GOL, MG, TRS, CL

The Z score for a bond length (or angle) is the number of standard deviations the observed value is removed from the expected value. A bond length (or angle) with $|Z| > 5$ is considered an outlier worth inspection. RMSZ is the root-mean-square of all Z scores of the bond lengths (or angles).

Mol	Chain	Bond lengths		Bond angles	
		RMSZ	# Z >5	RMSZ	# Z >5
1	A	0.44	1/3319 (0.0%)	0.56	0/4490
1	B	0.41	0/3324	0.55	0/4500
1	C	0.43	0/3365	0.57	0/4550
1	D	0.44	1/3304 (0.0%)	0.57	0/4473
All	All	0.43	2/13312 (0.0%)	0.56	0/18013

All (2) bond length outliers are listed below:

Mol	Chain	Res	Type	Atoms	Z	Observed(Å)	Ideal(Å)
1	D	276	GLU	C-N	6.34	1.46	1.34
1	A	276	GLU	C-N	6.16	1.46	1.34

There are no bond angle outliers.

There are no chirality outliers.

There are no planarity outliers.

5.2 Too-close contacts [i](#)

In the following table, the Non-H and H(model) columns list the number of non-hydrogen atoms and hydrogen atoms in the chain respectively. The H(added) column lists the number of hydrogen atoms added and optimized by MolProbity. The Clashes column lists the number of clashes within the asymmetric unit, whereas Symm-Clashes lists symmetry related clashes.

Mol	Chain	Non-H	H(model)	H(added)	Clashes	Symm-Clashes
1	A	3214	3092	3062	11	0
1	B	3210	3078	3049	9	0
1	C	3234	3127	3076	4	0
1	D	3194	3062	3035	4	0
2	A	53	32	33	0	0

Continued on next page...

Continued from previous page...

Mol	Chain	Non-H	H(model)	H(added)	Clashes	Symm-Clashes
2	B	53	32	33	0	0
2	C	53	32	33	0	0
2	D	53	33	33	0	0
3	A	1	0	0	0	0
3	B	2	0	0	0	0
3	D	3	0	0	0	0
4	A	2	0	0	0	0
4	B	2	0	0	0	0
4	C	5	0	0	0	0
4	D	2	0	0	0	0
5	B	8	12	12	0	0
5	C	8	12	12	2	0
5	D	8	12	12	2	0
6	C	6	8	8	0	0
7	A	357	0	0	5	2
7	B	300	0	0	4	1
7	C	358	0	0	2	2
7	D	346	0	0	2	1
All	All	14472	12532	12398	30	3

The all-atom clashscore is defined as the number of clashes found per 1000 atoms (including hydrogen atoms). The all-atom clashscore for this structure is 1.

All (30) close contacts within the same asymmetric unit are listed below, sorted by their clash magnitude.

Atom-1	Atom-2	Interatomic distance (Å)	Clash overlap (Å)
1:B:372:ASP:N	7:B:2286:HOH:O	2.13	0.82
1:B:139:ARG:NE	7:B:2167:HOH:O	2.16	0.79
1:D:407:GLU:OE1	7:D:2332:HOH:O	2.11	0.69
1:A:235:ARG:NH2	7:A:2259:HOH:O	2.26	0.68
1:B:167:GLN:OE1	7:B:2179:HOH:O	2.14	0.66
1:C:57:SER:OG	7:C:2068:HOH:O	2.14	0.65
1:A:112:ARG:NH1	7:A:2158:HOH:O	2.33	0.59
1:A:255:GLU:OE2	1:A:261:ARG:NH2	2.41	0.51
5:C:426:TRS:H21	7:C:2294:HOH:O	2.12	0.50
1:A:114:LYS:HD3	7:A:2048:HOH:O	2.13	0.49
1:A:91:GLN:NE2	7:A:2124:HOH:O	2.45	0.48
1:B:158:ASP:OD2	1:B:162:LYS:NZ	2.46	0.48
1:B:39:MET:HE2	1:B:207:ARG:CD	2.44	0.47
1:C:163:HIS:NE2	5:C:426:TRS:H22	2.30	0.47
1:A:145:ALA:O	1:A:151:ILE:HD12	2.14	0.47

Continued on next page...

Continued from previous page...

Atom-1	Atom-2	Interatomic distance (Å)	Clash overlap (Å)
1:B:195:VAL:HG12	1:B:200:ALA:HB3	1.97	0.46
1:D:163:HIS:NE2	5:D:425:TRS:H22	2.30	0.46
1:C:5:SER:O	1:C:234:THR:HA	2.16	0.46
1:B:385:ILE:HD12	1:B:412:LEU:HD12	1.97	0.45
1:A:95:LYS:HD2	7:A:2036:HOH:O	2.16	0.45
1:A:116:HIS:O	1:A:119:GLU:HG2	2.16	0.45
1:C:52:LEU:HD21	1:C:273[B]:THR:HG23	2.00	0.44
1:A:58:ILE:HD11	1:A:355:VAL:HG11	1.99	0.44
1:B:301:LYS:NZ	7:B:2249:HOH:O	2.52	0.43
1:D:58:ILE:HD11	1:D:355[A]:VAL:HG21	2.01	0.42
5:D:425:TRS:H21	7:D:2274:HOH:O	2.18	0.42
1:D:116:HIS:O	1:D:119:GLU:HG2	2.19	0.41
1:A:285:ASP:OD1	1:A:285:ASP:N	2.54	0.41
1:B:39:MET:HE2	1:B:207:ARG:HD2	2.01	0.41
1:A:91:GLN:HA	1:A:91:GLN:OE1	2.21	0.40

All (3) symmetry-related close contacts are listed below. The label for Atom-2 includes the symmetry operator and encoded unit-cell translations to be applied.

Atom-1	Atom-2	Interatomic distance (Å)	Clash overlap (Å)
7:B:2164:HOH:O	7:D:2158:HOH:O[2_757]	1.94	0.26
7:A:2048:HOH:O	7:C:2186:HOH:O[2_756]	2.09	0.11
7:A:2179:HOH:O	7:C:2285:HOH:O[2_856]	2.15	0.05

5.3 Torsion angles [i](#)

5.3.1 Protein backbone [i](#)

In the following table, the Percentiles column shows the percent Ramachandran outliers of the chain as a percentile score with respect to all X-ray entries followed by that with respect to entries of similar resolution.

The Analysed column shows the number of residues for which the backbone conformation was analysed, and the total number of residues.

Mol	Chain	Analysed	Favoured	Allowed	Outliers	Percentiles	
1	A	415/423 (98%)	407 (98%)	8 (2%)	0	100	100
1	B	417/423 (99%)	409 (98%)	8 (2%)	0	100	100
1	C	420/423 (99%)	410 (98%)	10 (2%)	0	100	100

Continued on next page...

Continued from previous page...

Mol	Chain	Analysed	Favoured	Allowed	Outliers	Percentiles	
1	D	415/423 (98%)	409 (99%)	6 (1%)	0	100	100
All	All	1667/1692 (98%)	1635 (98%)	32 (2%)	0	100	100

There are no Ramachandran outliers to report.

5.3.2 Protein sidechains [i](#)

In the following table, the Percentiles column shows the percent sidechain outliers of the chain as a percentile score with respect to all X-ray entries followed by that with respect to entries of similar resolution.

The Analysed column shows the number of residues for which the sidechain conformation was analysed, and the total number of residues.

Mol	Chain	Analysed	Rotameric	Outliers	Percentiles	
1	A	324/344 (94%)	321 (99%)	3 (1%)	78	75
1	B	322/344 (94%)	317 (98%)	5 (2%)	62	54
1	C	330/344 (96%)	328 (99%)	2 (1%)	86	84
1	D	320/344 (93%)	316 (99%)	4 (1%)	69	62
All	All	1296/1376 (94%)	1282 (99%)	14 (1%)	73	68

All (14) residues with a non-rotameric sidechain are listed below:

Mol	Chain	Res	Type
1	A	64	ARG
1	A	95	LYS
1	A	293	ASN
1	B	39	MET
1	B	64	ARG
1	B	150	ASP
1	B	194	LYS
1	B	293	ASN
1	C	64	ARG
1	C	293	ASN
1	D	64	ARG
1	D	123	GLN
1	D	368	ASP
1	D	415	ARG

Some sidechains can be flipped to improve hydrogen bonding and reduce clashes. There are no

such sidechains identified.

5.3.3 RNA [i](#)

There are no RNA molecules in this entry.

5.4 Non-standard residues in protein, DNA, RNA chains [i](#)

There are no non-standard protein/DNA/RNA residues in this entry.

5.5 Carbohydrates [i](#)

There are no carbohydrates in this entry.

5.6 Ligand geometry [i](#)

Of 25 ligands modelled in this entry, 17 are monoatomic - leaving 8 for Mogul analysis.

In the following table, the Counts columns list the number of bonds (or angles) for which Mogul statistics could be retrieved, the number of bonds (or angles) that are observed in the model and the number of bonds (or angles) that are defined in the Chemical Component Dictionary. The Link column lists molecule types, if any, to which the group is linked. The Z score for a bond length (or angle) is the number of standard deviations the observed value is removed from the expected value. A bond length (or angle) with $|Z| > 2$ is considered an outlier worth inspection. RMSZ is the root-mean-square of all Z scores of the bond lengths (or angles).

Mol	Type	Chain	Res	Link	Bond lengths			Bond angles		
					Counts	RMSZ	# Z > 2	Counts	RMSZ	# Z > 2
2	FDA	A	419	3	51,58,58	1.92	8 (15%)	60,89,89	2.52	10 (16%)
2	FDA	C	419	-	51,58,58	1.88	10 (19%)	60,89,89	2.44	7 (11%)
5	TRS	C	426	-	7,7,7	0.42	0	9,9,9	1.03	0
6	GOL	C	425	-	5,5,5	0.42	0	5,5,5	0.11	0
2	FDA	B	419	3	51,58,58	2.02	9 (17%)	60,89,89	2.69	9 (15%)
5	TRS	D	425	-	7,7,7	0.22	0	9,9,9	0.75	0
2	FDA	D	419	3	51,58,58	2.00	8 (15%)	60,89,89	2.53	10 (16%)
5	TRS	B	424	-	7,7,7	0.36	0	9,9,9	0.63	0

In the following table, the Chirals column lists the number of chiral outliers, the number of chiral centers analysed, the number of these observed in the model and the number defined in the Chemical Component Dictionary. Similar counts are reported in the Torsion and Rings columns. '-' means no outliers of that kind were identified.

Mol	Type	Chain	Res	Link	Chirals	Torsions	Rings
2	FDA	A	419	3	-	5/30/50/50	0/6/6/6
2	FDA	C	419	-	-	1/30/50/50	0/6/6/6
5	TRS	C	426	-	-	6/9/9/9	-
6	GOL	C	425	-	-	0/4/4/4	-
2	FDA	B	419	3	-	2/30/50/50	0/6/6/6
5	TRS	D	425	-	-	6/9/9/9	-
2	FDA	D	419	3	-	1/30/50/50	0/6/6/6
5	TRS	B	424	-	-	6/9/9/9	-

All (35) bond length outliers are listed below:

Mol	Chain	Res	Type	Atoms	Z	Observed(Å)	Ideal(Å)
2	D	419	FDA	C10-N1	8.11	1.43	1.33
2	D	419	FDA	C4X-N5	7.69	1.44	1.33
2	B	419	FDA	C4X-N5	7.56	1.44	1.33
2	B	419	FDA	C10-N1	7.54	1.42	1.33
2	A	419	FDA	C4X-N5	7.49	1.44	1.33
2	A	419	FDA	C10-N1	7.22	1.42	1.33
2	C	419	FDA	C4X-N5	6.83	1.43	1.33
2	C	419	FDA	C10-N1	6.72	1.41	1.33
2	C	419	FDA	C4-C4X	4.33	1.48	1.41
2	A	419	FDA	C4-C4X	4.04	1.48	1.41
2	B	419	FDA	C4-C4X	3.87	1.48	1.41
2	D	419	FDA	C4-C4X	3.78	1.47	1.41
2	B	419	FDA	C9A-C5X	3.45	1.49	1.42
2	D	419	FDA	C9A-C5X	3.42	1.49	1.42
2	B	419	FDA	C2-N1	-3.39	1.31	1.38
2	B	419	FDA	C8-C7	3.21	1.48	1.40
2	D	419	FDA	C8-C7	3.10	1.48	1.40
2	C	419	FDA	C8-C7	3.03	1.48	1.40
2	A	419	FDA	C8-C7	2.99	1.48	1.40
2	A	419	FDA	C2-N1	-2.99	1.32	1.38
2	C	419	FDA	C9A-C5X	2.93	1.48	1.42
2	B	419	FDA	C2-N3	-2.86	1.32	1.38
2	C	419	FDA	C2-N1	-2.76	1.32	1.38
2	A	419	FDA	C2-N3	-2.75	1.32	1.38
2	A	419	FDA	C9A-C5X	2.72	1.48	1.42
2	B	419	FDA	O4B-C1B	2.69	1.44	1.41
2	D	419	FDA	C2-N1	-2.55	1.33	1.38
2	C	419	FDA	O4B-C1B	2.53	1.44	1.41
2	A	419	FDA	C6-C5X	-2.47	1.38	1.41
2	C	419	FDA	C2-N3	-2.45	1.33	1.38

Continued on next page...

Continued from previous page...

Mol	Chain	Res	Type	Atoms	Z	Observed(Å)	Ideal(Å)
2	C	419	FDA	C6-C5X	-2.43	1.38	1.41
2	D	419	FDA	C6-C5X	-2.37	1.38	1.41
2	D	419	FDA	C2-N3	-2.22	1.33	1.38
2	B	419	FDA	C5A-C4A	2.13	1.46	1.40
2	C	419	FDA	C9A-N10	2.03	1.41	1.38

All (36) bond angle outliers are listed below:

Mol	Chain	Res	Type	Atoms	Z	Observed(°)	Ideal(°)
2	B	419	FDA	C4-N3-C2	13.93	126.90	115.14
2	D	419	FDA	C4-N3-C2	13.68	126.69	115.14
2	A	419	FDA	C4-N3-C2	13.38	126.44	115.14
2	C	419	FDA	C4-N3-C2	13.09	126.19	115.14
2	B	419	FDA	C1'-N10-C9A	9.68	125.91	118.29
2	D	419	FDA	C1'-N10-C9A	8.55	125.03	118.29
2	A	419	FDA	C1'-N10-C9A	8.55	125.03	118.29
2	C	419	FDA	C1'-N10-C9A	8.00	124.59	118.29
2	A	419	FDA	C4X-C4-N3	-6.32	114.78	123.43
2	B	419	FDA	C4X-C4-N3	-6.21	114.94	123.43
2	C	419	FDA	C4X-C4-N3	-6.11	115.07	123.43
2	D	419	FDA	C4X-C4-N3	-5.68	115.67	123.43
2	C	419	FDA	N3A-C2A-N1A	-4.00	122.43	128.68
2	B	419	FDA	C4-C4X-C10	-3.90	117.37	119.95
2	B	419	FDA	N3A-C2A-N1A	-3.85	122.66	128.68
2	D	419	FDA	C4-C4X-C10	-3.70	117.50	119.95
2	C	419	FDA	C9A-N10-C10	-3.69	117.08	121.91
2	B	419	FDA	C9A-N10-C10	-3.62	117.17	121.91
2	D	419	FDA	C9A-N10-C10	-3.53	117.28	121.91
2	A	419	FDA	N3A-C2A-N1A	-3.50	123.20	128.68
2	D	419	FDA	N3A-C2A-N1A	-3.34	123.45	128.68
2	A	419	FDA	C9A-N10-C10	-2.95	118.04	121.91
2	B	419	FDA	C2A-N1A-C6A	2.53	123.08	118.75
2	A	419	FDA	C1B-N9A-C4A	-2.49	122.26	126.64
2	C	419	FDA	C4-C4X-C10	-2.46	118.32	119.95
2	D	419	FDA	C5X-C9A-N10	2.44	119.49	117.72
2	A	419	FDA	C5X-C9A-N10	2.44	119.48	117.72
2	A	419	FDA	C4-C4X-C10	-2.37	118.38	119.95
2	A	419	FDA	C5A-C6A-N6A	-2.32	116.82	120.35
2	B	419	FDA	C5X-C9A-N10	2.27	119.36	117.72
2	B	419	FDA	N6A-C6A-N1A	2.24	123.22	118.57
2	D	419	FDA	C5'-C4'-C3'	-2.21	107.94	112.20
2	C	419	FDA	C2A-N1A-C6A	2.12	122.38	118.75

Continued on next page...

Continued from previous page...

Mol	Chain	Res	Type	Atoms	Z	Observed(°)	Ideal(°)
2	A	419	FDA	N6A-C6A-N1A	2.10	122.93	118.57
2	D	419	FDA	N6A-C6A-N1A	2.10	122.93	118.57
2	D	419	FDA	O2A-PA-O1A	2.03	122.30	112.24

There are no chirality outliers.

All (27) torsion outliers are listed below:

Mol	Chain	Res	Type	Atoms
5	C	426	TRS	C2-C-C1-O1
5	C	426	TRS	C3-C-C1-O1
5	C	426	TRS	N-C-C1-O1
5	C	426	TRS	C1-C-C3-O3
5	C	426	TRS	C2-C-C3-O3
5	C	426	TRS	N-C-C3-O3
5	D	425	TRS	C1-C-C3-O3
5	D	425	TRS	C2-C-C3-O3
5	D	425	TRS	N-C-C3-O3
5	D	425	TRS	N-C-C2-O2
5	B	424	TRS	N-C-C1-O1
5	B	424	TRS	C1-C-C3-O3
5	B	424	TRS	N-C-C3-O3
2	A	419	FDA	O3'-C3'-C4'-C5'
2	A	419	FDA	C2'-C3'-C4'-O4'
5	D	425	TRS	C1-C-C2-O2
5	D	425	TRS	C3-C-C2-O2
5	B	424	TRS	C2-C-C1-O1
5	B	424	TRS	C3-C-C1-O1
5	B	424	TRS	C2-C-C3-O3
2	D	419	FDA	O4B-C4B-C5B-O5B
2	A	419	FDA	O3'-C3'-C4'-O4'
2	B	419	FDA	O3'-C3'-C4'-C5'
2	A	419	FDA	C2'-C3'-C4'-C5'
2	C	419	FDA	O4B-C4B-C5B-O5B
2	A	419	FDA	O4B-C4B-C5B-O5B
2	B	419	FDA	O4B-C4B-C5B-O5B

There are no ring outliers.

2 monomers are involved in 4 short contacts:

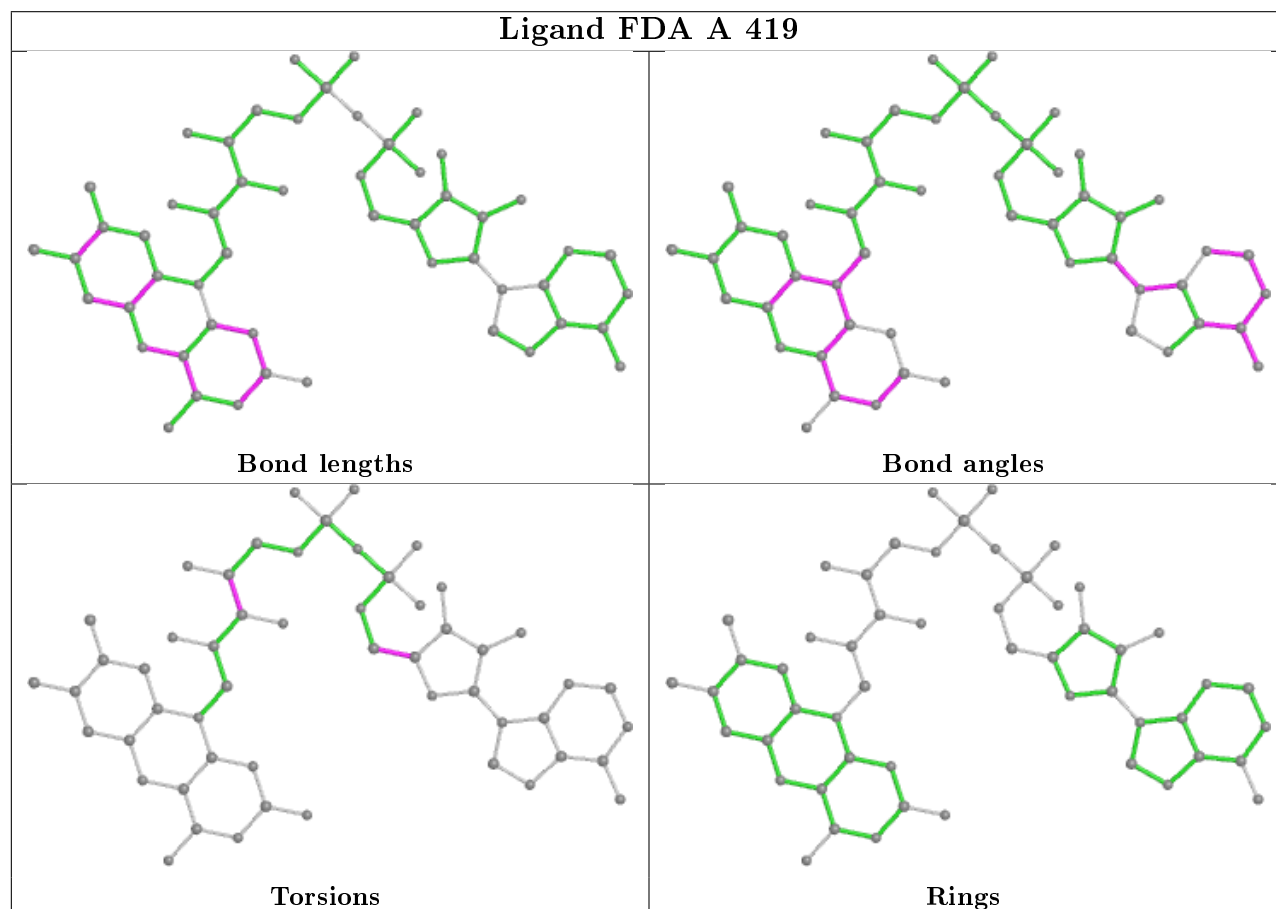
Mol	Chain	Res	Type	Clashes	Symm-Clashes
5	C	426	TRS	2	0

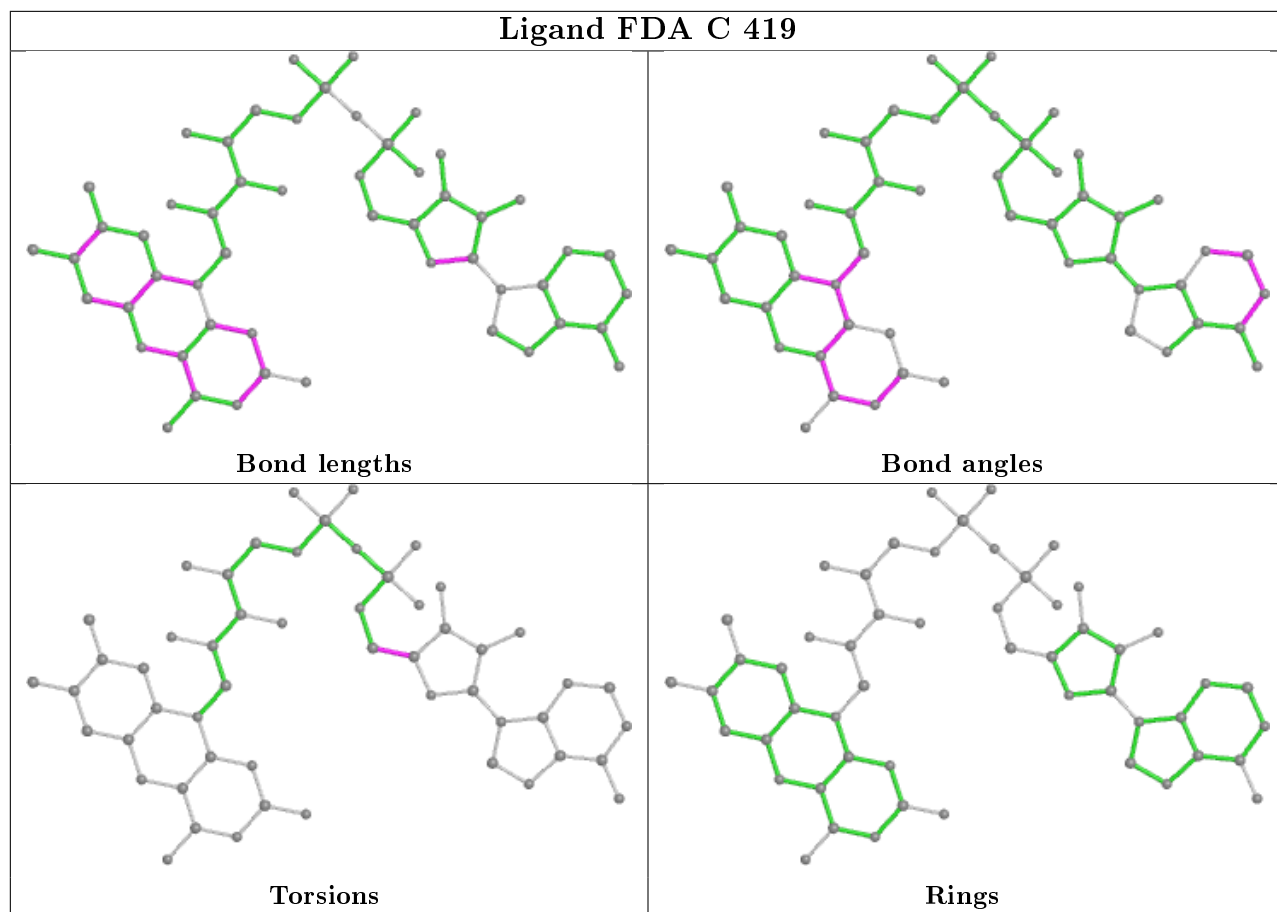
Continued on next page...

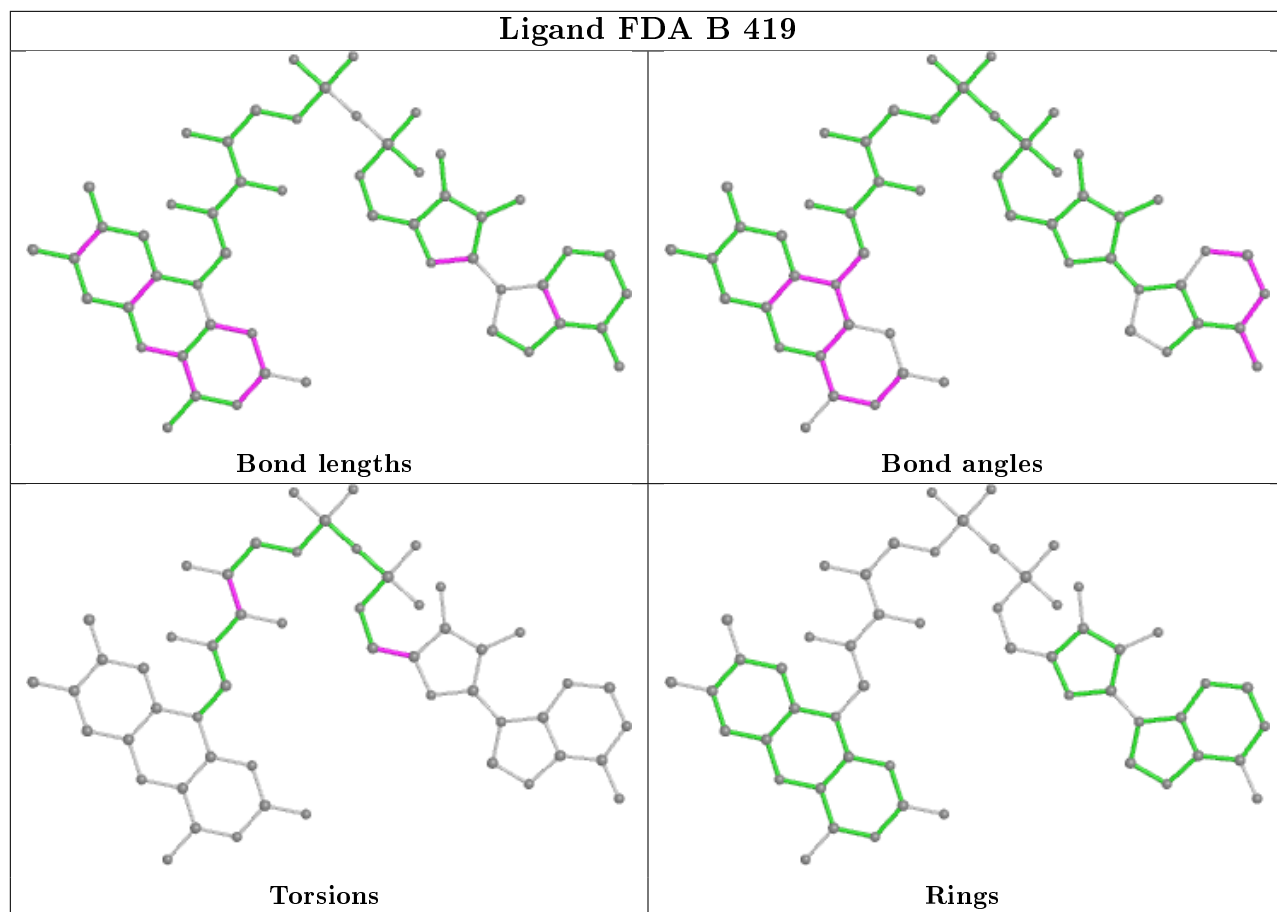
Continued from previous page...

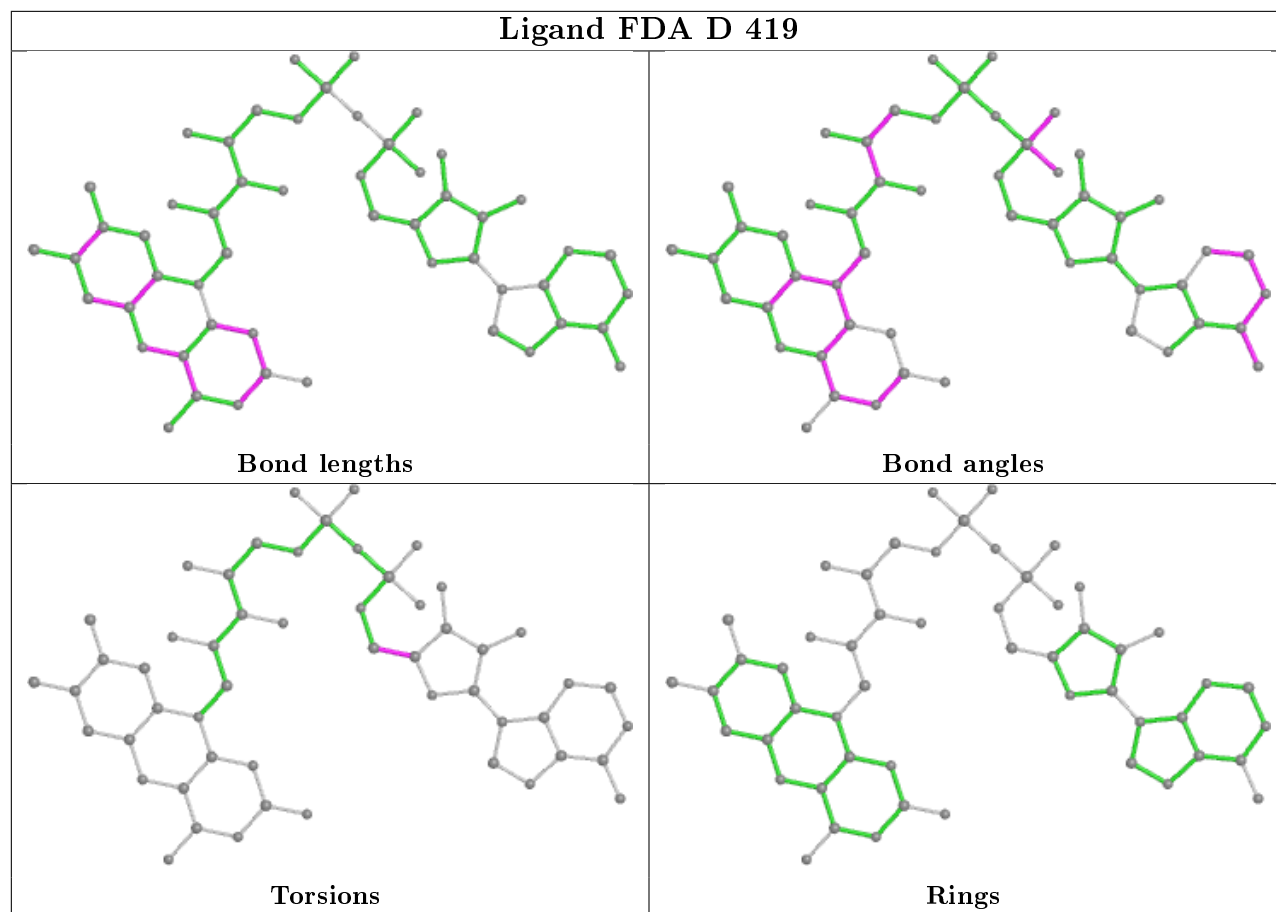
Mol	Chain	Res	Type	Clashes	Symm-Clashes
5	D	425	TRS	2	0

The following is a two-dimensional graphical depiction of Mogul quality analysis of bond lengths, bond angles, torsion angles, and ring geometry for all instances of the Ligand of Interest. In addition, ligands with molecular weight > 250 and outliers as shown on the validation Tables will also be included. For torsion angles, if less than 5% of the Mogul distribution of torsion angles is within 10 degrees of the torsion angle in question, then that torsion angle is considered an outlier. Any bond that is central to one or more torsion angles identified as an outlier by Mogul will be highlighted in the graph. For rings, the root-mean-square deviation (RMSD) between the ring in question and similar rings identified by Mogul is calculated over all ring torsion angles. If the average RMSD is greater than 60 degrees and the minimal RMSD between the ring in question and any Mogul-identified rings is also greater than 60 degrees, then that ring is considered an outlier. The outliers are highlighted in purple. The color gray indicates Mogul did not find sufficient equivalents in the CSD to analyse the geometry.









5.7 Other polymers [i](#)

There are no such residues in this entry.

5.8 Polymer linkage issues [i](#)

There are no chain breaks in this entry.

6 Fit of model and data [i](#)

6.1 Protein, DNA and RNA chains [i](#)

In the following table, the column labelled ‘#RSRZ> 2’ contains the number (and percentage) of RSRZ outliers, followed by percent RSRZ outliers for the chain as percentile scores relative to all X-ray entries and entries of similar resolution. The OWAB column contains the minimum, median, 95th percentile and maximum values of the occupancy-weighted average B-factor per residue. The column labelled ‘Q< 0.9’ lists the number of (and percentage) of residues with an average occupancy less than 0.9.

Mol	Chain	Analysed	<RSRZ>	#RSRZ>2	OWAB(Å ²)	Q<0.9
1	A	413/423 (97%)	-0.12	16 (3%) 39 33	11, 23, 45, 70	0
1	B	413/423 (97%)	-0.04	19 (4%) 32 26	14, 26, 48, 76	0
1	C	414/423 (97%)	-0.19	8 (1%) 66 63	10, 22, 44, 67	0
1	D	412/423 (97%)	-0.11	10 (2%) 59 54	13, 23, 43, 68	0
All	All	1652/1692 (97%)	-0.12	53 (3%) 47 41	10, 24, 46, 76	0

All (53) RSRZ outliers are listed below:

Mol	Chain	Res	Type	RSRZ
1	A	418	ALA	6.6
1	B	418	ALA	5.9
1	D	418	ALA	5.4
1	C	418	ALA	5.0
1	B	54	GLY	4.2
1	B	372	ASP	4.1
1	B	417	ALA	3.9
1	A	54	GLY	3.6
1	A	31	GLY	3.3
1	B	27	PRO	3.3
1	A	372	ASP	3.3
1	D	214	ASP	3.2
1	B	380	ARG	3.1
1	B	368	ASP	3.1
1	B	31	GLY	3.1
1	A	3	GLN	3.1
1	A	259	GLY	3.1
1	C	54	GLY	2.9
1	A	216	ASP	2.8
1	A	380	ARG	2.8
1	D	215	GLY	2.8

Continued on next page...

Continued from previous page...

Mol	Chain	Res	Type	RSRZ
1	B	259	GLY	2.7
1	C	367	ARG	2.7
1	C	114	LYS	2.6
1	C	53	ASP	2.6
1	A	94	PHE	2.5
1	B	53	ASP	2.5
1	A	393	GLU	2.5
1	C	259	GLY	2.5
1	D	368	ASP	2.5
1	D	417	ALA	2.4
1	D	53	ASP	2.3
1	B	260	ALA	2.3
1	C	373	HIS	2.3
1	B	281	ASP	2.3
1	A	53	ASP	2.3
1	A	277	PRO	2.2
1	A	214	ASP	2.2
1	B	215	GLY	2.2
1	D	27	PRO	2.2
1	B	381	ASP	2.2
1	A	417	ALA	2.1
1	B	56	ALA	2.1
1	B	327	ASP	2.1
1	D	216	ASP	2.1
1	D	3	GLN	2.1
1	B	416	ILE	2.1
1	A	327	ASP	2.0
1	C	368	ASP	2.0
1	D	150	ASP	2.0
1	B	352	LEU	2.0
1	A	150	ASP	2.0
1	B	252	ASP	2.0

6.2 Non-standard residues in protein, DNA, RNA chains [i](#)

There are no non-standard protein/DNA/RNA residues in this entry.

6.3 Carbohydrates [i](#)

There are no carbohydrates in this entry.

6.4 Ligands

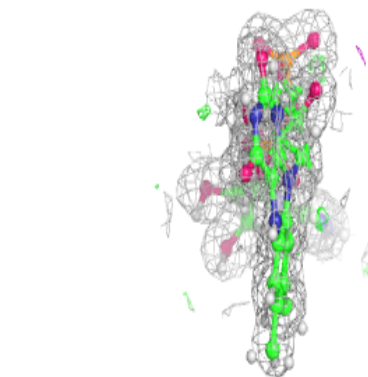
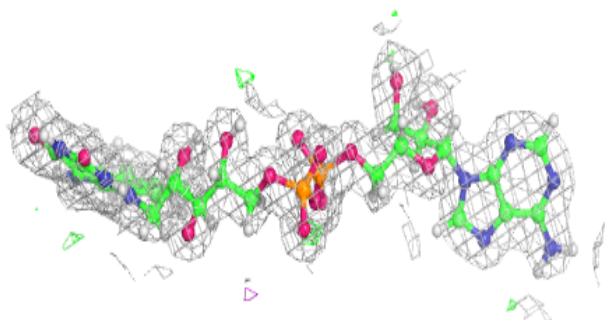
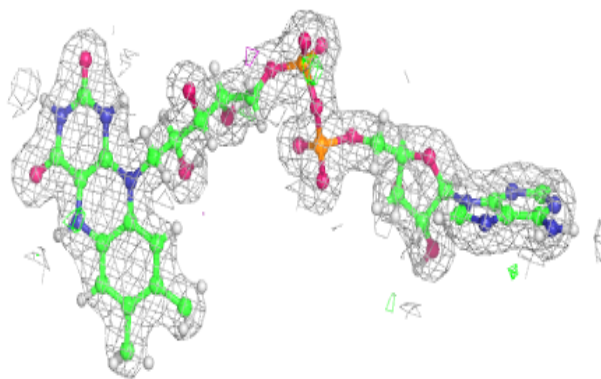
In the following table, the Atoms column lists the number of modelled atoms in the group and the number defined in the chemical component dictionary. The B-factors column lists the minimum, median, 95th percentile and maximum values of B factors of atoms in the group. The column labelled 'Q< 0.9' lists the number of atoms with occupancy less than 0.9.

Mol	Type	Chain	Res	Atoms	RSCC	RSR	B-factors(Å ²)	Q<0.9
5	TRS	B	424	8/8	0.77	0.27	28,41,55,55	0
5	TRS	D	425	8/8	0.85	0.22	27,38,48,58	0
5	TRS	C	426	8/8	0.86	0.18	22,33,45,54	0
6	GOL	C	425	6/6	0.92	0.25	24,31,43,43	0
3	MG	D	420	1/1	0.96	0.23	36,36,36,36	0
4	CL	C	420	1/1	0.97	0.11	57,57,57,57	0
4	CL	C	424	1/1	0.98	0.04	25,25,25,25	0
2	FDA	A	419	53/53	0.98	0.08	9,14,21,24	0
3	MG	D	422	1/1	0.98	0.05	21,21,21,21	0
4	CL	B	423	1/1	0.98	0.03	25,25,25,25	0
2	FDA	C	419	53/53	0.98	0.09	9,14,18,22	0
2	FDA	D	419	53/53	0.98	0.08	11,14,19,25	0
4	CL	C	421	1/1	0.98	0.04	25,25,25,25	0
2	FDA	B	419	53/53	0.98	0.08	12,17,24,26	0
3	MG	B	421	1/1	0.99	0.06	23,23,23,23	0
4	CL	D	423	1/1	0.99	0.03	26,26,26,26	0
4	CL	C	422	1/1	0.99	0.03	24,24,24,24	0
4	CL	D	424	1/1	0.99	0.03	21,21,21,21	0
3	MG	B	420	1/1	0.99	0.05	31,31,31,31	0
4	CL	A	421	1/1	0.99	0.04	23,23,23,23	0
4	CL	A	422	1/1	0.99	0.09	28,28,28,28	0
3	MG	A	420	1/1	0.99	0.08	21,21,21,21	0
4	CL	B	422	1/1	1.00	0.05	23,23,23,23	0
4	CL	C	423	1/1	1.00	0.04	26,26,26,26	0
3	MG	D	421	1/1	1.00	0.10	21,21,21,21	0

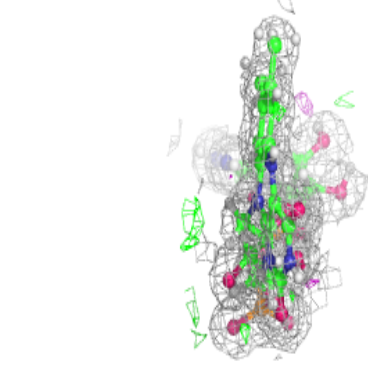
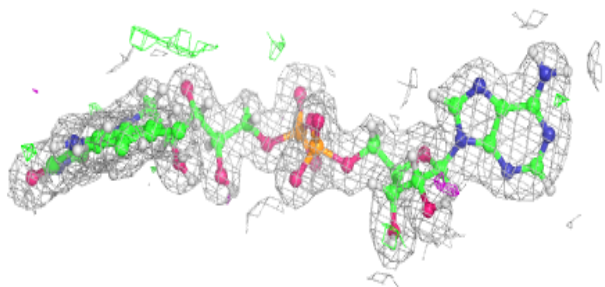
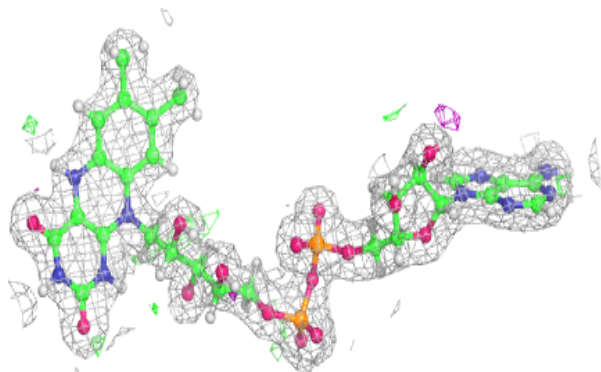
The following is a graphical depiction of the model fit to experimental electron density of all instances of the Ligand of Interest. In addition, ligands with molecular weight > 250 and outliers as shown on the geometry validation Tables will also be included. Each fit is shown from different orientation to approximate a three-dimensional view.

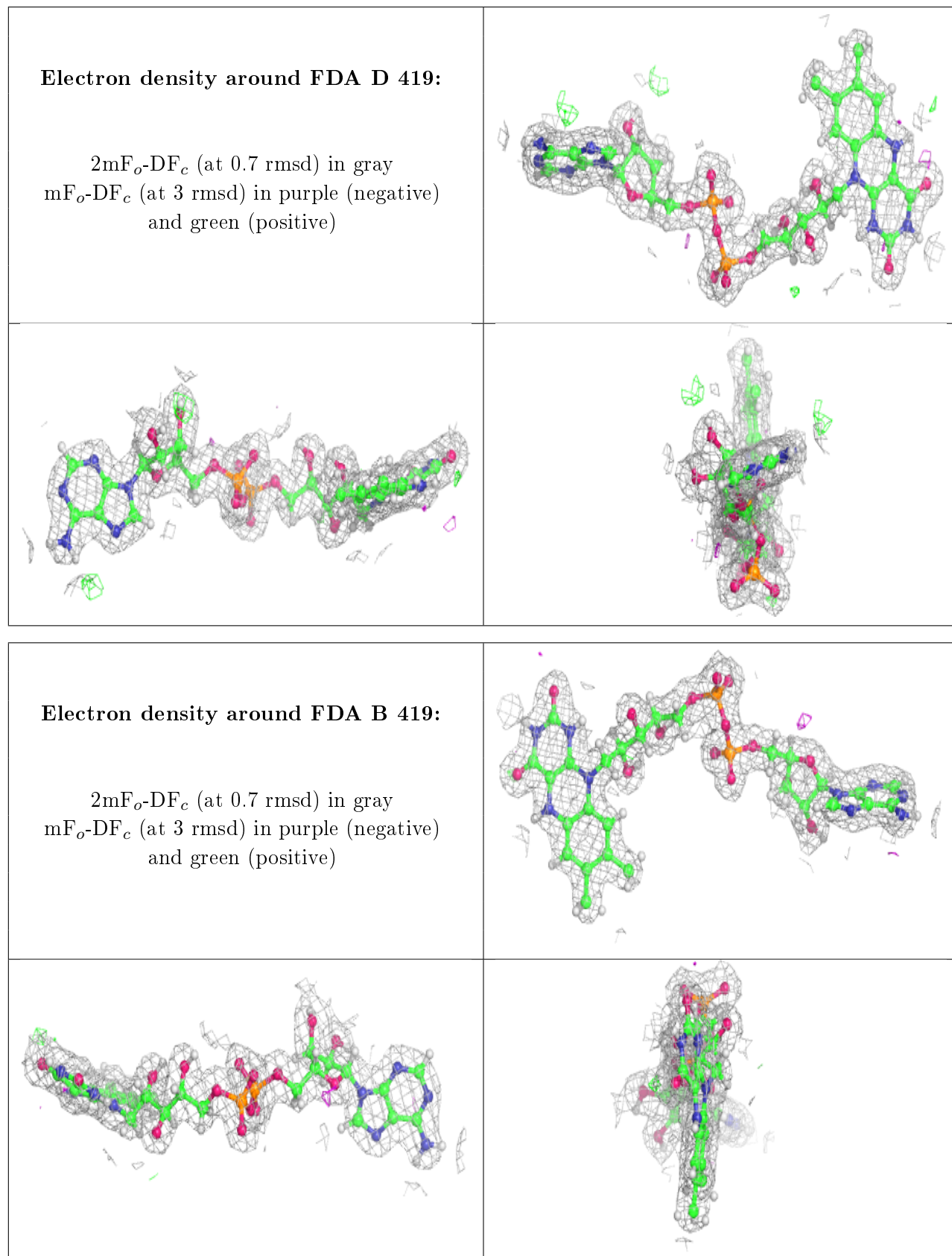
Electron density around FDA A 419:

$2mF_o-DF_c$ (at 0.7 rmsd) in gray
 mF_o-DF_c (at 3 rmsd) in purple (negative)
and green (positive)

**Electron density around FDA C 419:**

$2mF_o-DF_c$ (at 0.7 rmsd) in gray
 mF_o-DF_c (at 3 rmsd) in purple (negative)
and green (positive)





6.5 Other polymers

There are no such residues in this entry.