



# Full wwPDB X-ray Structure Validation Report ⓘ

Aug 8, 2020 – 08:18 AM BST

PDB ID : 2G1O  
Title : Ketopiperazine-Based Renin Inhibitors: Optimization of the "C" Ring  
Authors : Holsworth, D.D.; Zhanga, E.  
Deposited on : 2006-02-14  
Resolution : 2.70 Å(reported)

This is a Full wwPDB X-ray Structure Validation Report for a publicly released PDB entry.

We welcome your comments at [validation@mail.wwpdb.org](mailto:validation@mail.wwpdb.org)

A user guide is available at

<https://www.wwpdb.org/validation/2017/XrayValidationReportHelp>

with specific help available everywhere you see the ⓘ symbol.

---

The following versions of software and data (see [references ⓘ](#)) were used in the production of this report:

MolProbity : 4.02b-467  
Mogul : 1.8.5 (274361), CSD as541be (2020)  
Xtriage (Phenix) : 1.13  
EDS : 2.13.1  
buster-report : 1.1.7 (2018)  
Percentile statistics : 20191225.v01 (using entries in the PDB archive December 25th 2019)  
Refmac : 5.8.0158  
CCP4 : 7.0.044 (Gargrove)  
Ideal geometry (proteins) : Engh & Huber (2001)  
Ideal geometry (DNA, RNA) : Parkinson et al. (1996)  
Validation Pipeline (wwPDB-VP) : 2.13.1

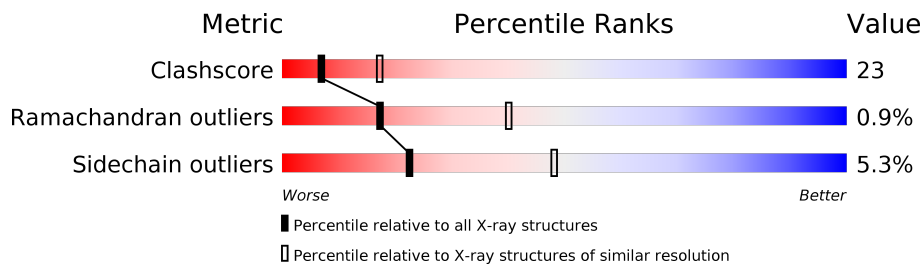
# 1 Overall quality at a glance

The following experimental techniques were used to determine the structure:

*X-RAY DIFFRACTION*

The reported resolution of this entry is 2.70 Å.

Percentile scores (ranging between 0-100) for global validation metrics of the entry are shown in the following graphic. The table shows the number of entries on which the scores are based.



Metric	Whole archive (#Entries)	Similar resolution (#Entries, resolution range(Å))
Clashscore	141614	3122 (2.70-2.70)
Ramachandran outliers	138981	3069 (2.70-2.70)
Sidechain outliers	138945	3069 (2.70-2.70)

The table below summarises the geometric issues observed across the polymeric chains and their fit to the electron density. The red, orange, yellow and green segments on the lower bar indicate the fraction of residues that contain outliers for  $\geq 3$ , 2, 1 and 0 types of geometric quality criteria respectively. A grey segment represents the fraction of residues that are not modelled. The numeric value for each fraction is indicated below the corresponding segment, with a dot representing fractions  $\leq 5\%$ .

Mol	Chain	Length	Quality of chain	
1	A	333	65%	31% .
1	B	333	59%	38% .

The following table lists non-polymeric compounds, carbohydrate monomers and non-standard residues in protein, DNA, RNA chains that are outliers for geometric or electron-density-fit criteria:

Mol	Type	Chain	Res	Chirality	Geometry	Clashes	Electron density
2	NAG	B	986	-	-	X	-

## 2 Entry composition [i](#)

There are 4 unique types of molecules in this entry. The entry contains 5498 atoms, of which 0 are hydrogens and 0 are deuteriums.

In the tables below, the ZeroOcc column contains the number of atoms modelled with zero occupancy, the AltConf column contains the number of residues with at least one atom in alternate conformation and the Trace column contains the number of residues modelled with at most 2 atoms.

- Molecule 1 is a protein called Renin.

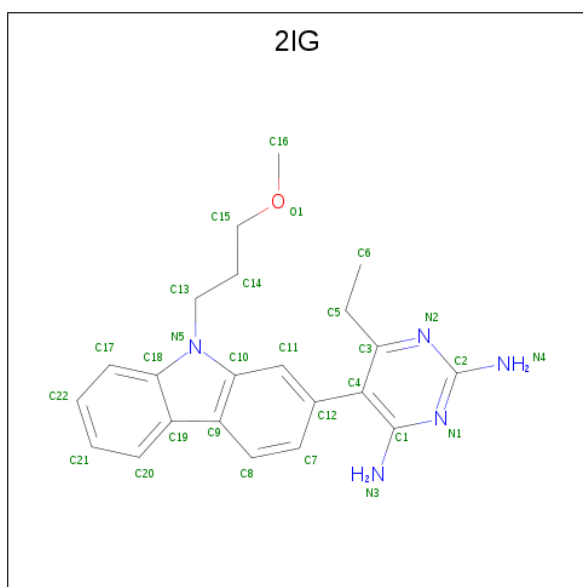
Mol	Chain	Residues	Atoms					ZeroOcc	AltConf	Trace
			Total	C	N	O	S			
1	A	333	Total 2572	C 1642	N 416	O 500	S 14	0	0	0
1	B	333	Total 2572	C 1642	N 416	O 500	S 14	0	0	0

- Molecule 2 is 2-acetamido-2-deoxy-beta-D-glucopyranose (three-letter code: NAG) (formula:  $C_8H_{15}NO_6$ ).



Mol	Chain	Residues	Atoms				ZeroOcc	AltConf
			Total	C	N	O		
2	A	1	Total 14	C 8	N 1	O 5	0	0
2	B	1	Total 14	C 8	N 1	O 5	0	0

- Molecule 3 is 6-ETHYL-5-[9-(3-METHOXYPROPYL)-9H-CARBAZOL-2-YL]PYRIMIDIN E-2,4-DIAMINE (three-letter code: 2IG) (formula:  $C_{22}H_{25}N_5O$ ).



Mol	Chain	Residues	Atoms				ZeroOcc	AltConf
			Total	C	N	O		
3	A	1	28	22	5	1	0	0
3	B	1	28	22	5	1	0	0

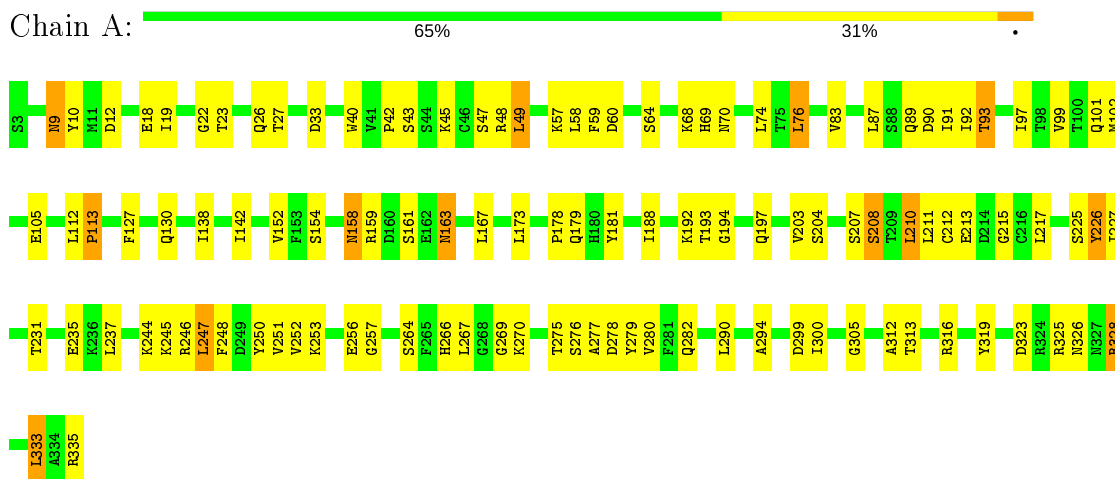
- Molecule 4 is water.

Mol	Chain	Residues	Atoms		ZeroOcc	AltConf
			Total	O		
4	A	158	158	158	0	0
4	B	112	112	112	0	0

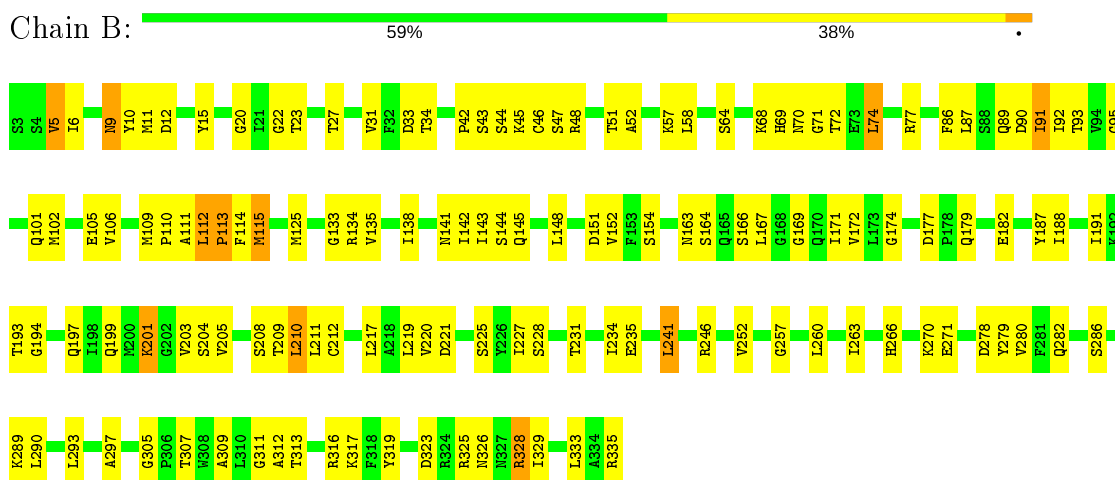
### 3 Residue-property plots [i](#)

These plots are drawn for all protein, RNA, DNA and oligosaccharide chains in the entry. The first graphic for a chain summarises the proportions of the various outlier classes displayed in the second graphic. The second graphic shows the sequence view annotated by issues in geometry. Residues are color-coded according to the number of geometric quality criteria for which they contain at least one outlier: green = 0, yellow = 1, orange = 2 and red = 3 or more. Stretches of 2 or more consecutive residues without any outlier are shown as a green connector. Residues present in the sample, but not in the model, are shown in grey.

- Molecule 1: Renin



- Molecule 1: Renin



## 4 Data and refinement statistics

Property	Value	Source
Space group	P 21 3	Depositor
Cell constants a, b, c, $\alpha$ , $\beta$ , $\gamma$	141.25Å 141.25Å 141.25Å 90.00° 90.00° 90.00°	Depositor
Resolution (Å)	50.00 – 2.70 49.94 – 2.70	Depositor EDS
% Data completeness (in resolution range)	(Not available) (50.00-2.70) 94.2 (49.94-2.70)	Depositor EDS
$R_{merge}$	(Not available)	Depositor
$R_{sym}$	(Not available)	Depositor
$\langle I/\sigma(I) \rangle$ <sup>1</sup>	3.66 (at 2.69Å)	Xtrriage
Refinement program	CNS	Depositor
R, $R_{free}$	0.195 , 0.251 0.212 , (Not available)	Depositor DCC
$R_{free}$ test set	No test flags present.	wwPDB-VP
Wilson B-factor (Å <sup>2</sup> )	39.4	Xtrriage
Anisotropy	0.000	Xtrriage
Bulk solvent $k_{sol}$ (e/Å <sup>3</sup> ), $B_{sol}$ (Å <sup>2</sup> )	0.30 , 50.4	EDS
L-test for twinning <sup>2</sup>	$\langle  L  \rangle = 0.49$ , $\langle L^2 \rangle = 0.33$	Xtrriage
Estimated twinning fraction	0.033 for l,-k,h	Xtrriage
$F_o, F_c$ correlation	0.72	EDS
Total number of atoms	5498	wwPDB-VP
Average B, all atoms (Å <sup>2</sup> )	39.0	wwPDB-VP

Xtrriage's analysis on translational NCS is as follows: *The largest off-origin peak in the Patterson function is 2.76% of the height of the origin peak. No significant pseudotranslation is detected.*

<sup>1</sup>Intensities estimated from amplitudes.

<sup>2</sup>Theoretical values of  $\langle |L| \rangle$ ,  $\langle L^2 \rangle$  for acentric reflections are 0.5, 0.333 respectively for untwinned datasets, and 0.375, 0.2 for perfectly twinned datasets.

## 5 Model quality

### 5.1 Standard geometry

Bond lengths and bond angles in the following residue types are not validated in this section: 2IG, NAG

The Z score for a bond length (or angle) is the number of standard deviations the observed value is removed from the expected value. A bond length (or angle) with  $|Z| > 5$  is considered an outlier worth inspection. RMSZ is the root-mean-square of all Z scores of the bond lengths (or angles).

Mol	Chain	Bond lengths		Bond angles	
		RMSZ	# Z  >5	RMSZ	# Z  >5
1	A	0.35	0/2632	0.66	0/3568
1	B	0.33	0/2632	0.65	0/3568
All	All	0.34	0/5264	0.66	0/7136

There are no bond length outliers.

There are no bond angle outliers.

There are no chirality outliers.

There are no planarity outliers.

### 5.2 Too-close contacts

In the following table, the Non-H and H(model) columns list the number of non-hydrogen atoms and hydrogen atoms in the chain respectively. The H(added) column lists the number of hydrogen atoms added and optimized by MolProbity. The Clashes column lists the number of clashes within the asymmetric unit, whereas Symm-Clashes lists symmetry related clashes.

Mol	Chain	Non-H	H(model)	H(added)	Clashes	Symm-Clashes
1	A	2572	0	2500	112	0
1	B	2572	0	2500	125	0
2	A	14	0	13	0	0
2	B	14	0	13	7	0
3	A	28	0	25	1	0
3	B	28	0	25	2	0
4	A	158	0	0	13	0
4	B	112	0	0	17	0
All	All	5498	0	5076	237	0

The all-atom clashscore is defined as the number of clashes found per 1000 atoms (including hydrogen atoms). The all-atom clashscore for this structure is 23.

All (237) close contacts within the same asymmetric unit are listed below, sorted by their clash magnitude.

Atom-1	Atom-2	Interatomic distance (Å)	Clash overlap (Å)
1:A:26:GLN:HE22	1:A:60:ASP:H	1.02	0.98
1:A:87:LEU:HB3	1:A:102:MET:HE1	1.48	0.96
1:B:326:ASN:HB2	1:B:328:ARG:HD2	1.53	0.91
1:A:235:GLU:HG3	4:A:1036:HOH:O	1.72	0.90
1:B:208:SER:HB2	4:B:990:HOH:O	1.73	0.87
1:A:276:SER:O	1:A:280:VAL:HG12	1.75	0.85
1:A:275:THR:HG21	4:A:993:HOH:O	1.77	0.83
1:B:252:VAL:HG23	4:B:996:HOH:O	1.80	0.81
1:B:191:ILE:HG13	4:B:1005:HOH:O	1.80	0.80
1:B:217:LEU:HD22	4:B:1005:HOH:O	1.80	0.80
1:A:152:VAL:HG12	1:A:323:ASP:HA	1.63	0.79
1:B:48:ARG:HH12	1:B:58:LEU:HD11	1.48	0.79
1:B:210:LEU:H	1:B:210:LEU:HD23	1.46	0.78
1:A:207:SER:HB2	4:A:1079:HOH:O	1.83	0.77
1:B:227:ILE:HG13	1:B:313:THR:HB	1.68	0.76
1:B:143:ILE:HG13	4:B:1087:HOH:O	1.86	0.75
1:A:275:THR:HG22	1:A:277:ALA:H	1.52	0.75
1:B:143:ILE:HD13	1:B:148:LEU:HD12	1.70	0.74
1:B:217:LEU:HB2	1:B:307:THR:HG22	1.71	0.73
1:B:286:SER:HB3	4:B:1066:HOH:O	1.87	0.72
1:B:71:GLY:H	2:B:986:NAG:H82	1.55	0.72
1:A:43:SER:HB2	1:A:105:GLU:HB3	1.70	0.72
1:B:289:LYS:HB2	4:B:1066:HOH:O	1.90	0.72
1:B:323:ASP:HB3	1:B:328:ARG:HG2	1.73	0.71
1:B:152:VAL:HG12	1:B:323:ASP:HA	1.73	0.71
1:A:26:GLN:HE22	1:A:60:ASP:N	1.82	0.70
1:A:158:ASN:ND2	1:A:159:ARG:H	1.89	0.70
1:B:305:GLY:HA2	1:B:307:THR:HG23	1.75	0.68
1:B:191:ILE:HD11	1:B:199:GLN:HB2	1.77	0.67
1:B:5:VAL:HG13	1:B:171:ILE:HG23	1.75	0.67
1:B:70:ASN:HA	2:B:986:NAG:C8	2.24	0.66
1:A:208:SER:O	1:A:210:LEU:HD23	1.96	0.65
1:A:102:MET:HB2	4:A:1005:HOH:O	1.95	0.65
1:B:9:ASN:HD21	1:B:12:ASP:H	1.45	0.65
1:A:87:LEU:HB3	1:A:102:MET:CE	2.26	0.65
1:B:48:ARG:HH22	1:B:58:LEU:HD13	1.63	0.64
1:B:6:ILE:HG23	1:B:167:LEU:CD1	2.26	0.64
1:A:9:ASN:HD21	1:A:12:ASP:H	1.45	0.64
1:A:226:TYR:HB3	1:A:294:ALA:O	1.98	0.63
1:B:112:LEU:HD23	1:B:113:PRO:HA	1.80	0.63

*Continued on next page...*



*Continued from previous page...*

Atom-1	Atom-2	Interatomic distance (Å)	Clash overlap (Å)
1:B:42:PRO:HG3	1:B:109:MET:HE1	1.79	0.62
1:A:130:GLN:HG3	4:A:1061:HOH:O	1.99	0.62
1:B:9:ASN:C	1:B:9:ASN:HD22	2.02	0.62
1:B:326:ASN:CB	1:B:328:ARG:HD2	2.28	0.62
1:B:197:GLN:OE1	1:B:307:THR:HG21	1.99	0.61
1:A:179:GLN:O	1:A:335:ARG:HD2	2.00	0.61
1:A:323:ASP:OD1	1:A:328:ARG:HD2	2.00	0.61
1:B:210:LEU:H	1:B:210:LEU:CD2	2.14	0.61
1:B:48:ARG:HH22	1:B:58:LEU:CD1	2.13	0.61
1:A:18:GLU:HG3	4:A:1131:HOH:O	1.99	0.61
1:A:9:ASN:HD22	1:A:9:ASN:C	2.04	0.61
1:A:163:ASN:HD22	1:A:163:ASN:H	1.49	0.60
1:B:220:VAL:HG21	1:B:329:ILE:HD13	1.83	0.60
1:A:300:ILE:O	1:A:305:GLY:HA3	2.01	0.60
1:A:161:SER:OG	1:A:163:ASN:ND2	2.36	0.59
1:B:5:VAL:HG13	1:B:171:ILE:CG2	2.32	0.59
1:B:225:SER:O	1:B:312:ALA:HB3	2.04	0.58
1:A:154:SER:HB3	1:A:319:TYR:CE1	2.38	0.58
1:A:253:LYS:HD2	1:A:256:GLU:OE2	2.03	0.58
1:B:203:VAL:HB	1:B:211:LEU:HB2	1.85	0.58
1:A:192:LYS:NZ	1:A:193:THR:O	2.36	0.57
1:B:142:ILE:O	1:B:145:GLN:HG2	2.04	0.57
1:B:323:ASP:OD1	1:B:328:ARG:HD3	2.04	0.57
1:A:45:LYS:HD2	4:A:1135:HOH:O	2.03	0.57
1:A:158:ASN:HD22	1:A:159:ARG:H	1.50	0.57
1:A:9:ASN:HD22	1:A:10:TYR:N	2.02	0.57
1:A:68:LYS:HB2	1:A:89:GLN:HB3	1.86	0.57
1:B:151:ASP:CB	4:B:995:HOH:O	2.53	0.57
1:B:69:HIS:HA	4:B:1014:HOH:O	2.04	0.57
1:A:266:HIS:HE1	1:A:269:GLY:HA2	1.71	0.56
1:B:182:GLU:HG2	1:B:335:ARG:HD3	1.88	0.56
1:B:52:ALA:HA	1:B:115:MET:HE2	1.88	0.56
1:B:231:THR:O	1:B:235:GLU:HG3	2.04	0.56
1:B:11:MET:O	1:B:12:ASP:HB2	2.06	0.56
1:A:325:ARG:HD2	4:A:1037:HOH:O	2.06	0.56
1:B:43:SER:O	1:B:58:LEU:HD22	2.04	0.55
1:B:111:ALA:O	1:B:115:MET:HB2	2.06	0.55
1:A:244:LYS:HB3	4:A:1108:HOH:O	2.07	0.55
1:B:45:LYS:HD2	1:B:86:PHE:HZ	1.70	0.55
1:B:106:VAL:HG11	1:B:109:MET:HE2	1.89	0.54
1:B:33:ASP:OD1	3:B:886:2IG:N2	2.39	0.54

*Continued on next page...*

*Continued from previous page...*

Atom-1	Atom-2	Interatomic distance (Å)	Clash overlap (Å)
1:B:201:LYS:HE3	1:B:266:HIS:CD2	2.42	0.54
1:B:217:LEU:HB2	1:B:307:THR:CG2	2.37	0.54
1:B:9:ASN:HD22	1:B:10:TYR:N	2.05	0.54
1:B:71:GLY:N	2:B:986:NAG:H82	2.23	0.54
1:A:163:ASN:ND2	1:A:163:ASN:O	2.41	0.53
1:B:266:HIS:HB2	4:B:988:HOH:O	2.08	0.53
1:B:9:ASN:C	1:B:9:ASN:ND2	2.62	0.53
1:B:15:TYR:O	1:B:31:VAL:HG22	2.08	0.53
1:B:151:ASP:HB2	4:B:995:HOH:O	2.07	0.53
1:B:33:ASP:HB2	3:B:886:2IG:H62	1.91	0.53
1:A:197:GLN:CD	1:A:217:LEU:HD23	2.28	0.53
1:B:43:SER:HB2	1:B:105:GLU:HB3	1.90	0.53
1:A:231:THR:O	1:A:235:GLU:HG2	2.09	0.52
1:B:167:LEU:HD11	1:B:169:GLY:O	2.10	0.52
1:A:247:LEU:HD22	1:A:248:PHE:CE2	2.45	0.52
1:B:228:SER:OG	1:B:309:ALA:HB3	2.09	0.52
1:A:227:ILE:HG13	1:A:313:THR:HB	1.92	0.51
1:B:148:LEU:HD22	1:B:174:GLY:HA3	1.91	0.51
1:B:280:VAL:HG22	1:B:293:LEU:HD22	1.92	0.51
1:B:70:ASN:HA	2:B:986:NAG:H81	1.92	0.51
1:A:275:THR:CG2	1:A:276:SER:N	2.74	0.51
1:A:87:LEU:HD13	1:A:102:MET:HE1	1.93	0.51
1:B:154:SER:HB3	1:B:319:TYR:CE1	2.46	0.51
1:B:113:PRO:O	1:B:115:MET:N	2.44	0.51
1:B:289:LYS:HD2	4:B:1066:HOH:O	2.09	0.51
1:A:188:ILE:CD1	1:A:267:LEU:HB3	2.41	0.51
1:A:212:CYS:SG	1:A:212:CYS:O	2.69	0.50
1:B:193:THR:HG22	1:B:194:GLY:N	2.26	0.50
1:A:158:ASN:ND2	1:A:159:ARG:N	2.59	0.50
1:B:71:GLY:H	2:B:986:NAG:C8	2.21	0.50
1:B:20:GLY:O	1:B:92:ILE:HA	2.12	0.50
1:A:159:ARG:HB3	4:A:1050:HOH:O	2.12	0.50
1:B:177:ASP:OD1	1:B:179:GLN:HB2	2.10	0.50
1:B:187:TYR:HD2	1:B:328:ARG:HG3	1.77	0.50
1:B:101:GLN:NE2	1:B:138:ILE:HA	2.27	0.50
1:B:141:ASN:O	1:B:144:SER:HB2	2.12	0.50
1:A:92:ILE:HD12	1:A:101:GLN:HB3	1.93	0.50
1:B:205:VAL:HB	1:B:210:LEU:HD21	1.94	0.50
1:A:9:ASN:ND2	1:A:9:ASN:C	2.65	0.49
1:A:74:LEU:HD13	1:A:87:LEU:HD21	1.95	0.49
1:A:237:LEU:C	1:A:237:LEU:HD23	2.32	0.49

*Continued on next page...*

*Continued from previous page...*

Atom-1	Atom-2	Interatomic distance (Å)	Clash overlap (Å)
1:B:187:TYR:CD2	1:B:328:ARG:HG3	2.47	0.49
1:A:188:ILE:HD13	1:A:267:LEU:HB3	1.95	0.49
1:B:112:LEU:HD23	1:B:113:PRO:CA	2.42	0.49
1:B:44:SER:C	1:B:46:CYS:H	2.15	0.49
1:A:33:ASP:OD1	3:A:885:2IG:N2	2.46	0.48
1:A:204:SER:OG	1:A:264:SER:HB2	2.14	0.48
1:B:27:THR:O	1:B:57:LYS:HD3	2.12	0.48
1:A:99:VAL:HG11	1:A:142:ILE:HG12	1.96	0.48
1:B:9:ASN:HD21	1:B:12:ASP:N	2.10	0.48
1:B:9:ASN:ND2	1:B:12:ASP:H	2.10	0.48
1:B:270:LYS:HG2	4:B:1095:HOH:O	2.14	0.48
1:A:275:THR:O	1:A:278:ASP:HB2	2.14	0.47
1:A:275:THR:HG22	1:A:276:SER:N	2.29	0.47
1:B:69:HIS:CG	1:B:70:ASN:N	2.81	0.47
1:B:280:VAL:HG22	1:B:293:LEU:CD2	2.45	0.47
1:B:209:THR:O	1:B:209:THR:HG22	2.14	0.47
1:B:5:VAL:HG23	4:B:1004:HOH:O	2.14	0.47
1:A:9:ASN:HD21	1:A:12:ASP:N	2.12	0.47
1:B:70:ASN:HA	2:B:986:NAG:H82	1.96	0.47
1:A:192:LYS:HD2	1:A:193:THR:H	1.80	0.47
1:A:22:GLY:HA2	1:A:90:ASP:OD2	2.14	0.47
1:A:247:LEU:HD22	1:A:248:PHE:CD2	2.50	0.46
1:B:133:GLY:C	1:B:134:ARG:HG3	2.35	0.46
1:A:127:PHE:CB	1:A:194:GLY:HA2	2.45	0.46
1:B:217:LEU:HD12	1:B:307:THR:HG22	1.98	0.46
1:B:51:THR:O	1:B:115:MET:HE3	2.15	0.46
1:A:203:VAL:HG23	1:A:212:CYS:HB3	1.96	0.46
1:B:143:ILE:CD1	1:B:148:LEU:HD12	2.42	0.46
1:A:26:GLN:NE2	1:A:59:PHE:HA	2.30	0.46
1:A:167:LEU:H	1:A:167:LEU:HD23	1.80	0.46
1:A:257:GLY:HA3	1:A:282:GLN:HE22	1.80	0.46
1:B:110:PRO:O	1:B:111:ALA:C	2.54	0.46
1:B:77:ARG:HH11	1:B:77:ARG:HG2	1.81	0.46
1:A:213:GLU:C	1:A:215:GLY:H	2.19	0.46
1:A:87:LEU:CB	1:A:102:MET:HE1	2.34	0.45
1:B:210:LEU:HD13	4:B:990:HOH:O	2.15	0.45
1:B:212:CYS:O	1:B:212:CYS:SG	2.74	0.45
1:B:278:ASP:OD1	1:B:317:LYS:HD3	2.16	0.45
1:B:45:LYS:HD2	1:B:86:PHE:CZ	2.49	0.45
1:A:27:THR:O	1:A:57:LYS:HG2	2.17	0.45
1:B:113:PRO:C	1:B:115:MET:H	2.20	0.45

*Continued on next page...*

*Continued from previous page...*

Atom-1	Atom-2	Interatomic distance (Å)	Clash overlap (Å)
1:B:271:GLU:HG2	4:B:1043:HOH:O	2.15	0.45
1:B:74:LEU:O	1:B:74:LEU:HD12	2.17	0.45
1:A:97:ILE:HD13	1:A:142:ILE:HG23	1.99	0.45
1:A:192:LYS:NZ	1:A:193:THR:CG2	2.80	0.45
1:B:188:ILE:HD12	1:B:188:ILE:N	2.32	0.45
1:A:225:SER:O	1:A:312:ALA:HB3	2.15	0.45
1:B:221:ASP:O	1:B:311:GLY:HA2	2.17	0.45
1:A:163:ASN:H	1:A:163:ASN:ND2	2.11	0.45
1:A:40:TRP:CD1	1:A:76:LEU:HD23	2.52	0.44
1:A:42:PRO:HB2	1:A:58:LEU:HD23	1.98	0.44
1:B:89:GLN:HB2	1:B:102:MET:SD	2.56	0.44
1:A:245:LYS:HD2	1:A:250:TYR:OH	2.18	0.44
1:A:101:GLN:NE2	1:A:138:ILE:HA	2.33	0.44
1:A:9:ASN:ND2	1:A:12:ASP:H	2.13	0.44
1:B:52:ALA:HB3	1:B:109:MET:HB3	1.99	0.44
1:A:235:GLU:HB3	4:A:1143:HOH:O	2.17	0.44
1:A:192:LYS:HD2	1:A:193:THR:N	2.33	0.44
1:B:260:LEU:HB3	1:B:279:TYR:OH	2.18	0.44
1:B:312:ALA:O	1:B:316:ARG:HB2	2.17	0.44
1:B:77:ARG:NH1	1:B:77:ARG:HG2	2.33	0.44
1:A:163:ASN:ND2	1:A:163:ASN:N	2.66	0.44
1:A:211:LEU:HD11	1:A:237:LEU:HB2	2.00	0.43
1:B:134:ARG:CZ	2:B:986:NAG:H61	2.47	0.43
1:A:49:LEU:HD12	1:A:49:LEU:HA	1.77	0.43
1:B:208:SER:O	1:B:210:LEU:HD22	2.19	0.43
1:B:22:GLY:HA2	1:B:90:ASP:OD1	2.18	0.43
1:A:231:THR:N	1:A:299:ASP:OD2	2.45	0.43
1:A:163:ASN:HD22	1:A:163:ASN:N	2.09	0.43
1:A:69:HIS:CG	1:A:70:ASN:N	2.87	0.43
1:A:22:GLY:HA2	1:A:90:ASP:CG	2.39	0.43
1:B:91:ILE:O	1:B:91:ILE:HG13	2.18	0.43
1:A:112:LEU:HA	1:A:113:PRO:HA	1.81	0.43
1:B:71:GLY:O	1:B:72:THR:C	2.58	0.43
1:B:70:ASN:O	1:B:87:LEU:O	2.36	0.43
1:B:87:LEU:HD11	1:B:135:VAL:HG21	2.01	0.43
1:A:97:ILE:HD13	1:A:142:ILE:CG2	2.49	0.42
1:A:251:VAL:HG21	1:A:290:LEU:HD13	2.01	0.42
1:A:333:LEU:HA	1:A:333:LEU:HD23	1.81	0.42
1:B:151:ASP:HB3	1:B:325:ARG:HB2	1.99	0.42
1:A:266:HIS:CE1	1:A:269:GLY:HA2	2.52	0.42
1:B:234:ILE:HG13	1:B:297:ALA:HA	2.00	0.42

*Continued on next page...*

*Continued from previous page...*

Atom-1	Atom-2	Interatomic distance (Å)	Clash overlap (Å)
1:A:93:THR:HG23	4:A:1112:HOH:O	2.18	0.42
1:A:87:LEU:HD13	1:A:102:MET:CE	2.50	0.42
1:B:172:VAL:HG23	4:B:1013:HOH:O	2.19	0.42
1:A:192:LYS:NZ	1:A:193:THR:HG22	2.34	0.42
1:A:246:ARG:HB3	1:A:247:LEU:H	1.75	0.42
1:A:26:GLN:NE2	1:A:60:ASP:H	1.87	0.42
1:A:101:GLN:HG3	1:A:102:MET:N	2.35	0.42
1:A:158:ASN:HD22	1:A:159:ARG:N	2.18	0.42
1:B:23:THR:O	1:B:64:SER:HA	2.19	0.42
1:A:48:ARG:HD3	1:A:48:ARG:HA	1.79	0.41
1:B:164:SER:OG	1:B:166:SER:HB2	2.20	0.41
1:B:220:VAL:CG2	1:B:329:ILE:HD13	2.49	0.41
1:A:326:ASN:HB2	1:A:328:ARG:CG	2.50	0.41
1:A:90:ASP:OD2	1:A:91:ILE:N	2.50	0.41
1:B:20:GLY:O	1:B:93:THR:N	2.44	0.41
1:A:19:ILE:HG13	1:A:19:ILE:O	2.21	0.41
1:B:241:LEU:HD12	1:B:241:LEU:HA	1.90	0.41
1:A:325:ARG:C	1:A:326:ASN:HD22	2.25	0.41
1:B:204:SER:O	1:B:263:ILE:HA	2.21	0.41
1:A:159:ARG:CZ	4:A:1115:HOH:O	2.69	0.41
1:A:102:MET:HB3	1:A:102:MET:HE2	1.70	0.40
1:B:34:THR:HA	1:B:125:MET:HB2	2.03	0.40
1:B:257:GLY:HA3	1:B:282:GLN:HE22	1.85	0.40
1:A:313:THR:HA	1:A:316:ARG:NH2	2.35	0.40
1:A:76:LEU:HB2	1:A:83:VAL:HG23	2.02	0.40
1:A:178:PRO:HA	1:A:181:TYR:CE1	2.56	0.40
1:A:127:PHE:CG	1:A:194:GLY:HA2	2.57	0.40
1:A:23:THR:O	1:A:64:SER:HA	2.22	0.40
1:B:9:ASN:HD21	1:B:12:ASP:HA	1.87	0.40
1:A:276:SER:HA	1:A:279:TYR:CE2	2.57	0.40
1:A:47:SER:OG	1:A:49:LEU:HB2	2.22	0.40
1:A:91:ILE:HG13	1:A:91:ILE:O	2.21	0.40
1:B:48:ARG:NH1	1:B:58:LEU:HD11	2.27	0.40

There are no symmetry-related clashes.

## 5.3 Torsion angles [i](#)

### 5.3.1 Protein backbone [i](#)

In the following table, the Percentiles column shows the percent Ramachandran outliers of the chain as a percentile score with respect to all X-ray entries followed by that with respect to entries of similar resolution.

The Analysed column shows the number of residues for which the backbone conformation was analysed, and the total number of residues.

Mol	Chain	Analysed	Favoured	Allowed	Outliers	Percentiles	
1	A	331/333 (99%)	306 (92%)	23 (7%)	2 (1%)	25	50
1	B	331/333 (99%)	303 (92%)	24 (7%)	4 (1%)	13	32
All	All	662/666 (99%)	609 (92%)	47 (7%)	6 (1%)	17	40

All (6) Ramachandran outliers are listed below:

Mol	Chain	Res	Type
1	A	208	SER
1	B	114	PHE
1	A	270	LYS
1	B	246	ARG
1	B	47	SER
1	B	95	GLY

### 5.3.2 Protein sidechains [i](#)

In the following table, the Percentiles column shows the percent sidechain outliers of the chain as a percentile score with respect to all X-ray entries followed by that with respect to entries of similar resolution.

The Analysed column shows the number of residues for which the sidechain conformation was analysed, and the total number of residues.

Mol	Chain	Analysed	Rotameric	Outliers	Percentiles	
1	A	284/284 (100%)	270 (95%)	14 (5%)	25	52
1	B	284/284 (100%)	268 (94%)	16 (6%)	21	45
All	All	568/568 (100%)	538 (95%)	30 (5%)	22	48

All (30) residues with a non-rotameric sidechain are listed below:

Mol	Chain	Res	Type
1	A	9	ASN
1	A	49	LEU
1	A	76	LEU
1	A	93	THR
1	A	113	PRO
1	A	158	ASN
1	A	163	ASN
1	A	173	LEU
1	A	210	LEU
1	A	226	TYR
1	A	247	LEU
1	A	252	VAL
1	A	328	ARG
1	A	333	LEU
1	B	5	VAL
1	B	9	ASN
1	B	68	LYS
1	B	74	LEU
1	B	91	ILE
1	B	112	LEU
1	B	113	PRO
1	B	115	MET
1	B	163	ASN
1	B	201	LYS
1	B	210	LEU
1	B	219	LEU
1	B	241	LEU
1	B	290	LEU
1	B	328	ARG
1	B	333	LEU

Some sidechains can be flipped to improve hydrogen bonding and reduce clashes. All (23) such sidechains are listed below:

Mol	Chain	Res	Type
1	A	9	ASN
1	A	26	GLN
1	A	101	GLN
1	A	141	ASN
1	A	145	GLN
1	A	158	ASN
1	A	163	ASN
1	A	189	ASN
1	A	199	GLN

*Continued on next page...*

*Continued from previous page...*

Mol	Chain	Res	Type
1	A	266	HIS
1	A	282	GLN
1	A	296	HIS
1	A	326	ASN
1	B	9	ASN
1	B	26	GLN
1	B	56	HIS
1	B	101	GLN
1	B	141	ASN
1	B	145	GLN
1	B	186	HIS
1	B	189	ASN
1	B	266	HIS
1	B	327	ASN

### 5.3.3 RNA [i](#)

There are no RNA molecules in this entry.

### 5.4 Non-standard residues in protein, DNA, RNA chains [i](#)

There are no non-standard protein/DNA/RNA residues in this entry.

### 5.5 Carbohydrates [i](#)

There are no monosaccharides in this entry.

### 5.6 Ligand geometry [i](#)

4 ligands are modelled in this entry.

In the following table, the Counts columns list the number of bonds (or angles) for which Mogul statistics could be retrieved, the number of bonds (or angles) that are observed in the model and the number of bonds (or angles) that are defined in the Chemical Component Dictionary. The Link column lists molecule types, if any, to which the group is linked. The Z score for a bond length (or angle) is the number of standard deviations the observed value is removed from the expected value. A bond length (or angle) with  $|Z| > 2$  is considered an outlier worth inspection. RMSZ is the root-mean-square of all Z scores of the bond lengths (or angles).



Mol	Type	Chain	Res	Link	Bond lengths			Bond angles		
					Counts	RMSZ	# Z  > 2	Counts	RMSZ	# Z  > 2
2	NAG	B	986	1	14,14,15	0.69	1 (7%)	17,19,21	0.64	0
2	NAG	A	985	1	14,14,15	0.51	0	17,19,21	0.77	1 (5%)
3	2IG	B	886	-	29,31,31	1.37	5 (17%)	36,44,44	1.61	6 (16%)
3	2IG	A	885	-	29,31,31	1.35	4 (13%)	36,44,44	1.64	6 (16%)

In the following table, the Chirals column lists the number of chiral outliers, the number of chiral centers analysed, the number of these observed in the model and the number defined in the Chemical Component Dictionary. Similar counts are reported in the Torsion and Rings columns. '-' means no outliers of that kind were identified.

Mol	Type	Chain	Res	Link	Chirals	Torsions	Rings
2	NAG	B	986	1	-	2/6/23/26	0/1/1/1
2	NAG	A	985	1	-	4/6/23/26	0/1/1/1
3	2IG	B	886	-	-	0/11/11/11	0/4/4/4
3	2IG	A	885	-	-	0/11/11/11	0/4/4/4

All (10) bond length outliers are listed below:

Mol	Chain	Res	Type	Atoms	Z	Observed(Å)	Ideal(Å)
3	A	885	2IG	C8-C7	4.16	1.45	1.36
3	B	886	2IG	C8-C7	4.13	1.45	1.36
3	B	886	2IG	C21-C20	3.09	1.43	1.36
3	A	885	2IG	C21-C20	3.01	1.43	1.36
3	A	885	2IG	C22-C17	2.91	1.43	1.36
3	B	886	2IG	C22-C17	2.60	1.42	1.36
3	B	886	2IG	C7-C12	2.18	1.44	1.39
3	A	885	2IG	C22-C21	2.12	1.43	1.38
2	B	986	NAG	C1-C2	2.07	1.55	1.52
3	B	886	2IG	C22-C21	2.00	1.43	1.38

All (13) bond angle outliers are listed below:

Mol	Chain	Res	Type	Atoms	Z	Observed(°)	Ideal(°)
3	B	886	2IG	C2-N2-C3	5.03	120.44	116.24
3	A	885	2IG	C2-N2-C3	4.82	120.26	116.24
3	A	885	2IG	C7-C12-C4	4.48	128.22	120.79
3	B	886	2IG	C7-C12-C4	4.13	127.66	120.79
3	A	885	2IG	C11-C12-C4	-3.85	113.25	121.05
3	B	886	2IG	C11-C12-C4	-3.50	113.97	121.05
3	B	886	2IG	C4-C3-N2	-3.20	119.66	123.61
3	A	885	2IG	C4-C3-N2	-3.14	119.74	123.61

*Continued on next page...*

*Continued from previous page...*

Mol	Chain	Res	Type	Atoms	Z	Observed(°)	Ideal(°)
3	A	885	2IG	C4-C1-N1	2.43	123.89	122.52
3	B	886	2IG	C4-C1-N1	2.41	123.88	122.52
3	A	885	2IG	C5-C3-C4	2.24	124.13	122.57
3	B	886	2IG	C5-C3-C4	2.14	124.06	122.57
2	A	985	NAG	C2-N2-C7	-2.12	119.89	122.90

There are no chirality outliers.

All (6) torsion outliers are listed below:

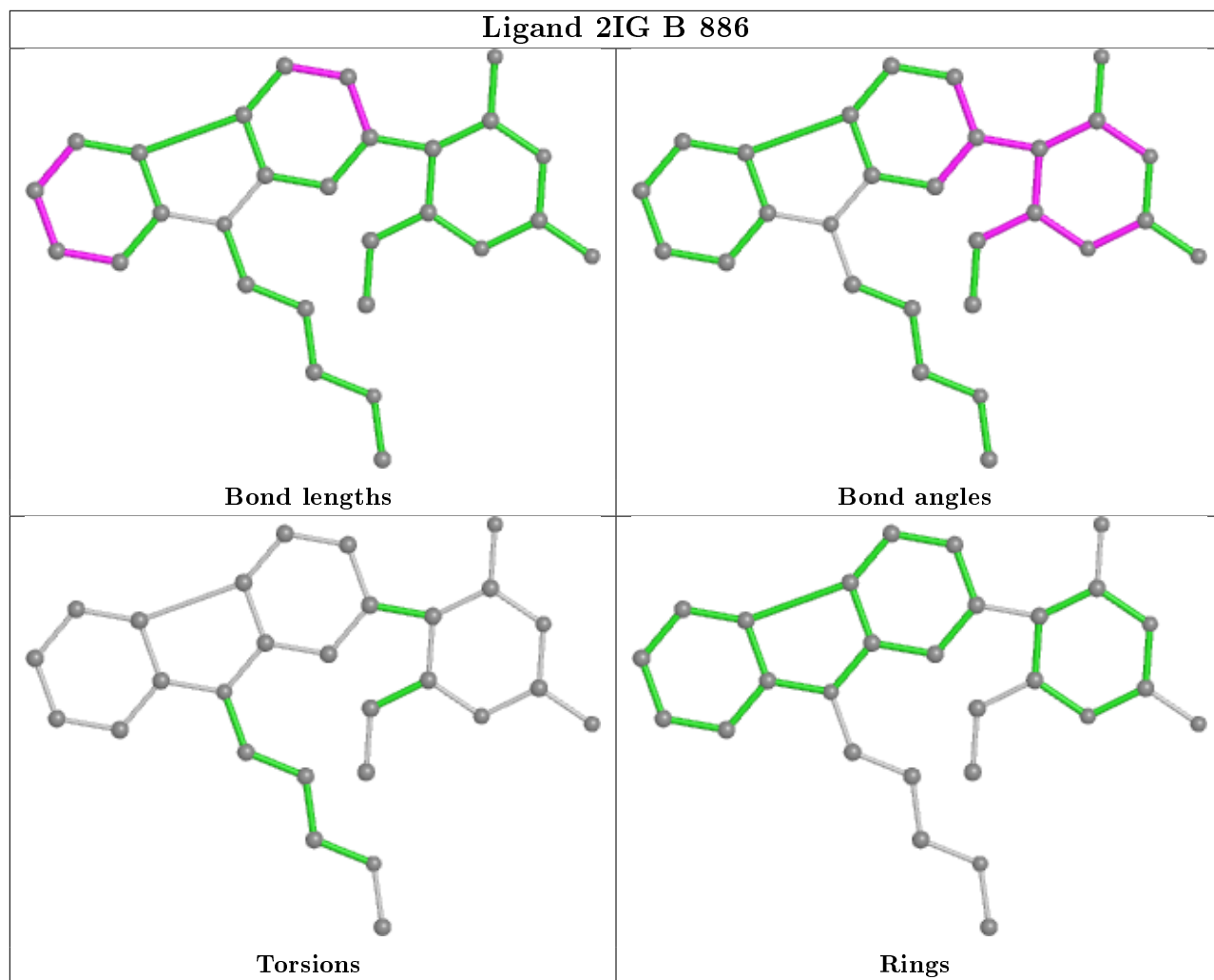
Mol	Chain	Res	Type	Atoms
2	B	986	NAG	C8-C7-N2-C2
2	B	986	NAG	O7-C7-N2-C2
2	A	985	NAG	C4-C5-C6-O6
2	A	985	NAG	O5-C5-C6-O6
2	A	985	NAG	C8-C7-N2-C2
2	A	985	NAG	O7-C7-N2-C2

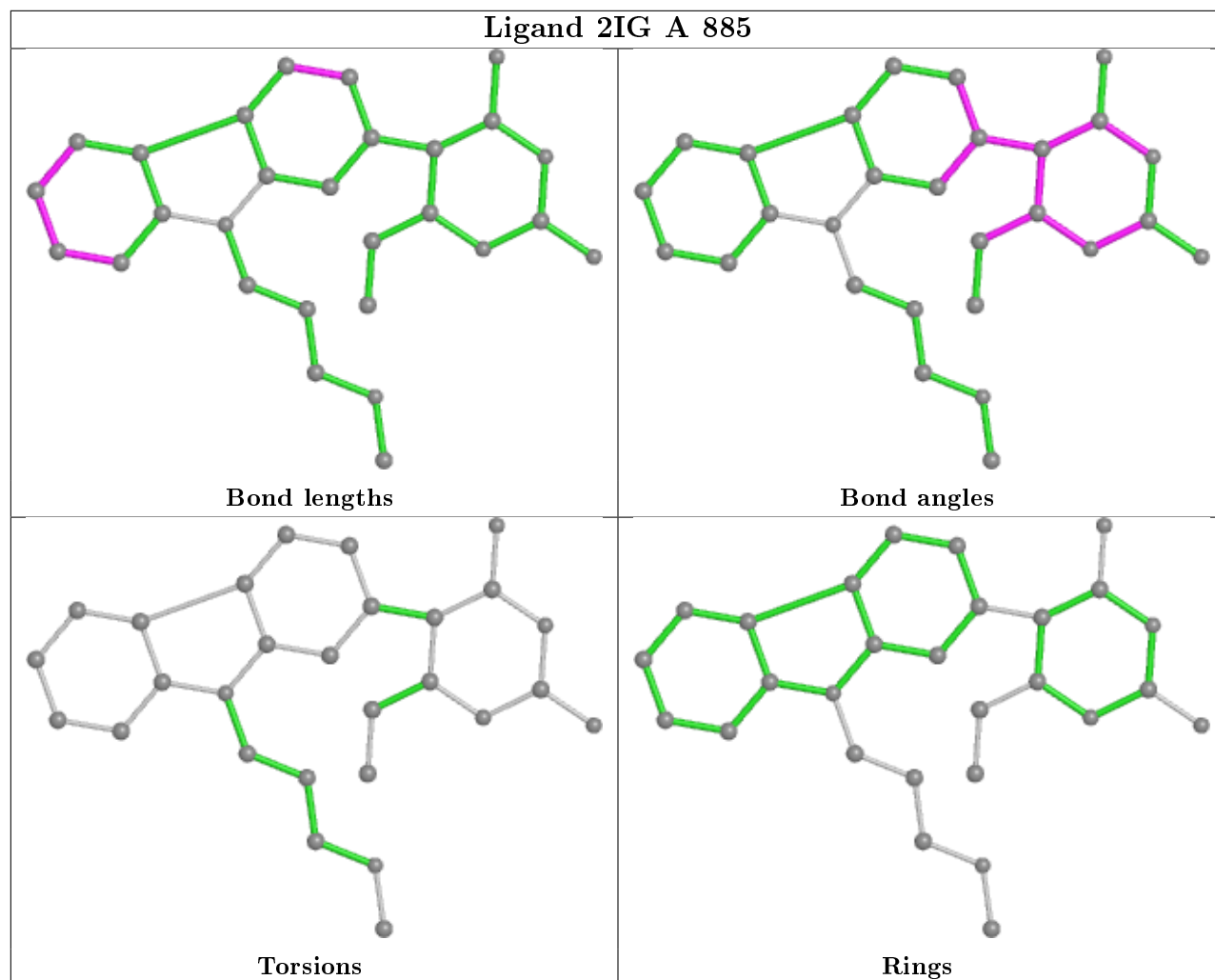
There are no ring outliers.

3 monomers are involved in 10 short contacts:

Mol	Chain	Res	Type	Clashes	Symm-Clashes
2	B	986	NAG	7	0
3	B	886	2IG	2	0
3	A	885	2IG	1	0

The following is a two-dimensional graphical depiction of Mogul quality analysis of bond lengths, bond angles, torsion angles, and ring geometry for all instances of the Ligand of Interest. In addition, ligands with molecular weight > 250 and outliers as shown on the validation Tables will also be included. For torsion angles, if less than 5% of the Mogul distribution of torsion angles is within 10 degrees of the torsion angle in question, then that torsion angle is considered an outlier. Any bond that is central to one or more torsion angles identified as an outlier by Mogul will be highlighted in the graph. For rings, the root-mean-square deviation (RMSD) between the ring in question and similar rings identified by Mogul is calculated over all ring torsion angles. If the average RMSD is greater than 60 degrees and the minimal RMSD between the ring in question and any Mogul-identified rings is also greater than 60 degrees, then that ring is considered an outlier. The outliers are highlighted in purple. The color gray indicates Mogul did not find sufficient equivalents in the CSD to analyse the geometry.





## 5.7 Other polymers [i](#)

There are no such residues in this entry.

## 5.8 Polymer linkage issues [i](#)

There are no chain breaks in this entry.

## 6 Fit of model and data

### 6.1 Protein, DNA and RNA chains

Unable to reproduce the depositors R factor - this section is therefore empty.

### 6.2 Non-standard residues in protein, DNA, RNA chains

Unable to reproduce the depositors R factor - this section is therefore empty.

### 6.3 Carbohydrates

Unable to reproduce the depositors R factor - this section is therefore empty.

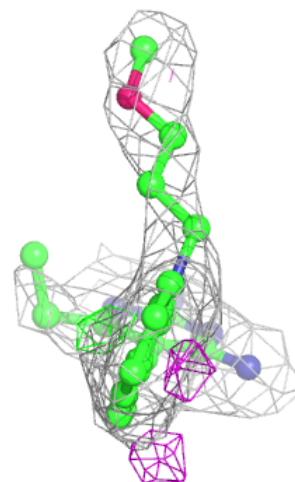
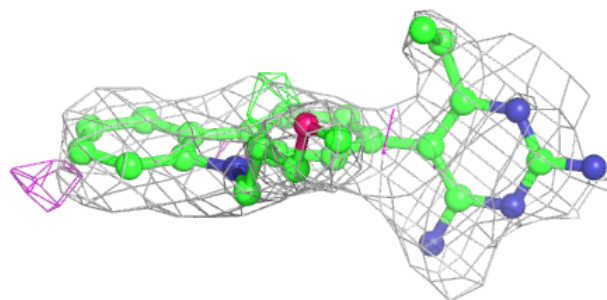
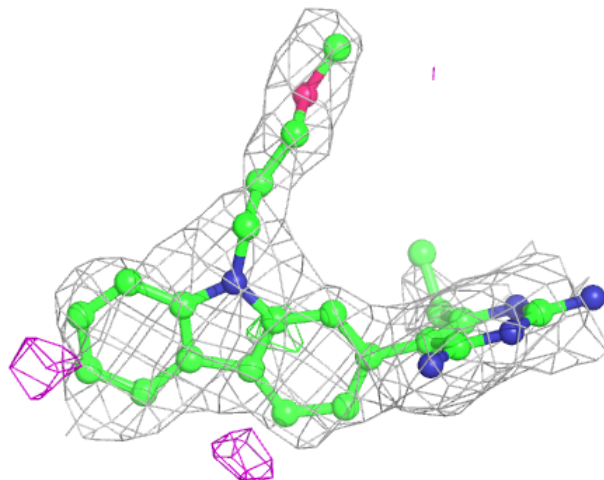
### 6.4 Ligands

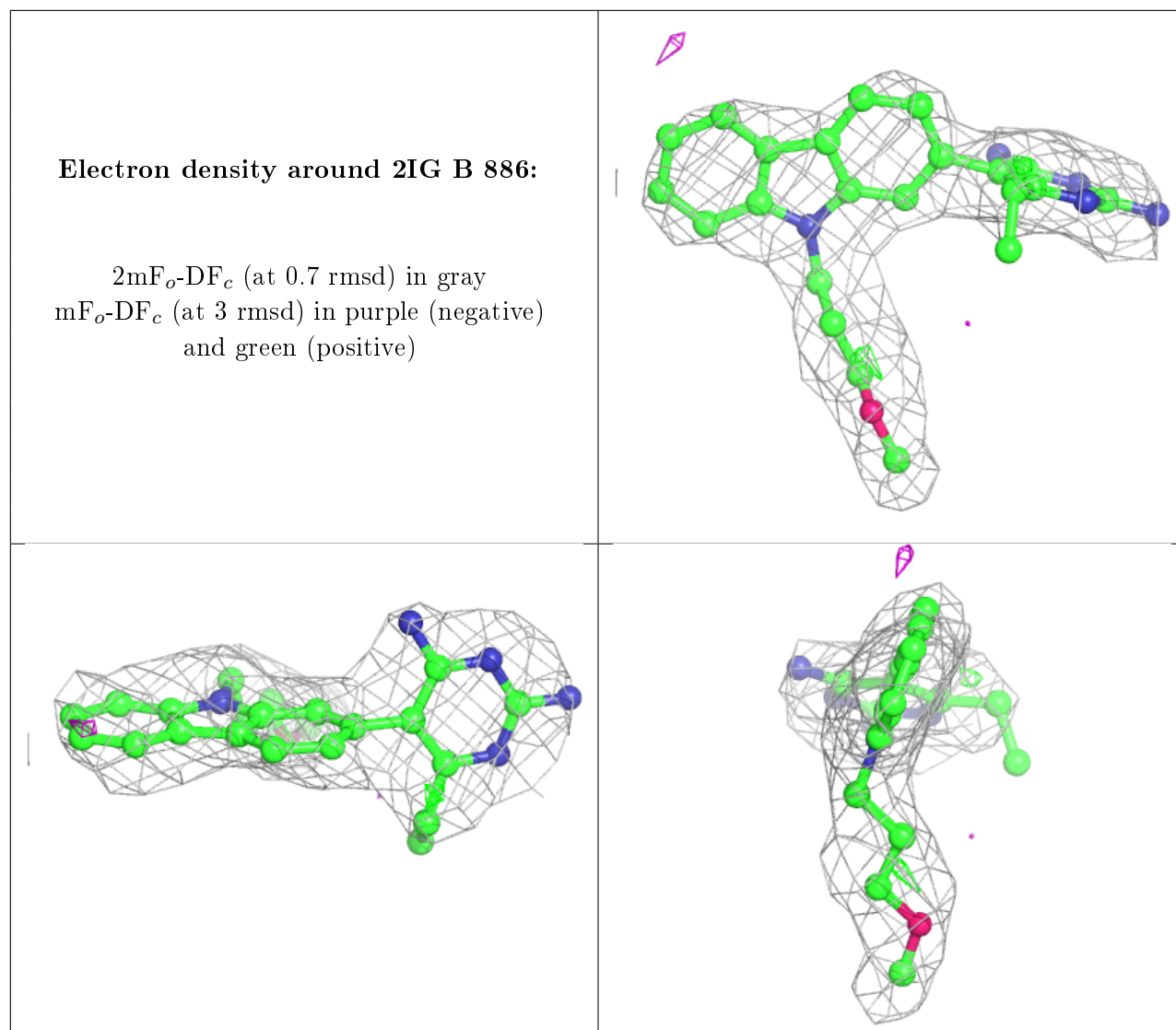
Unable to reproduce the depositors R factor - this section is therefore empty.

The following is a graphical depiction of the model fit to experimental electron density of all instances of the Ligand of Interest. In addition, ligands with molecular weight > 250 and outliers as shown on the geometry validation Tables will also be included. Each fit is shown from different orientation to approximate a three-dimensional view.

**Electron density around 2IG A 885:**

$2mF_o-DF_c$  (at 0.7 rmsd) in gray  
 $mF_o-DF_c$  (at 3 rmsd) in purple (negative)  
and green (positive)





## 6.5 Other polymers [i](#)

Unable to reproduce the depositors R factor - this section is therefore empty.