



Full wwPDB X-ray Structure Validation Report ⓘ

May 18, 2020 – 09:58 pm BST

PDB ID : 6FW7
Title : Crystal structure of L-tryptophan oxidase VioA from *Chromobacterium violaceum* in complex with 4-Fluoro-L-Tryptophan
Authors : Lai, H.E.; Morgan, M.; Moore, S.; Freemont, P.
Deposited on : 2018-03-05
Resolution : 3.00 Å(reported)

This is a Full wwPDB X-ray Structure Validation Report for a publicly released PDB entry.

We welcome your comments at validation@mail.wwpdb.org

A user guide is available at

<https://www.wwpdb.org/validation/2017/XrayValidationReportHelp>

with specific help available everywhere you see the ⓘ symbol.

The following versions of software and data (see [references ⓘ](#)) were used in the production of this report:

MolProbity : 4.02b-467
Mogul : 1.8.5 (274361), CSD as541be (2020)
Xtriage (Phenix) : 1.13
EDS : 2.11
buster-report : 1.1.7 (2018)
Percentile statistics : 20191225.v01 (using entries in the PDB archive December 25th 2019)
Refmac : 5.8.0158
CCP4 : 7.0.044 (Gargrove)
Ideal geometry (proteins) : Engh & Huber (2001)
Ideal geometry (DNA, RNA) : Parkinson et al. (1996)
Validation Pipeline (wwPDB-VP) : 2.11

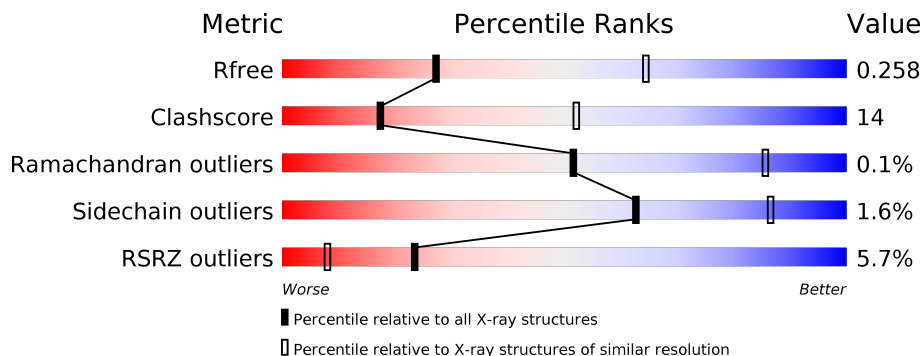
1 Overall quality at a glance

The following experimental techniques were used to determine the structure:

X-RAY DIFFRACTION

The reported resolution of this entry is 3.00 Å.

Percentile scores (ranging between 0-100) for global validation metrics of the entry are shown in the following graphic. The table shows the number of entries on which the scores are based.



Metric	Whole archive (#Entries)	Similar resolution (#Entries, resolution range(Å))
R_{free}	130704	2092 (3.00-3.00)
Clashscore	141614	2416 (3.00-3.00)
Ramachandran outliers	138981	2333 (3.00-3.00)
Sidechain outliers	138945	2336 (3.00-3.00)
RSRZ outliers	127900	1990 (3.00-3.00)

The table below summarises the geometric issues observed across the polymeric chains and their fit to the electron density. The red, orange, yellow and green segments on the lower bar indicate the fraction of residues that contain outliers for ≥ 3 , 2, 1 and 0 types of geometric quality criteria respectively. A grey segment represents the fraction of residues that are not modelled. The numeric value for each fraction is indicated below the corresponding segment, with a dot representing fractions $\leq 5\%$. The upper red bar (where present) indicates the fraction of residues that have poor fit to the electron density. The numeric value is given above the bar.

Mol	Chain	Length	Quality of chain
1	A	417	 11% 70% 28% ..
1	B	417	 11% 73% 26% .

2 Entry composition i

There are 5 unique types of molecules in this entry. The entry contains 6507 atoms, of which 0 are hydrogens and 0 are deuteriums.

In the tables below, the ZeroOcc column contains the number of atoms modelled with zero occupancy, the AltConf column contains the number of residues with at least one atom in alternate conformation and the Trace column contains the number of residues modelled with at most 2 atoms.

- Molecule 1 is a protein called Flavin-dependent L-tryptophan oxidase VioA.

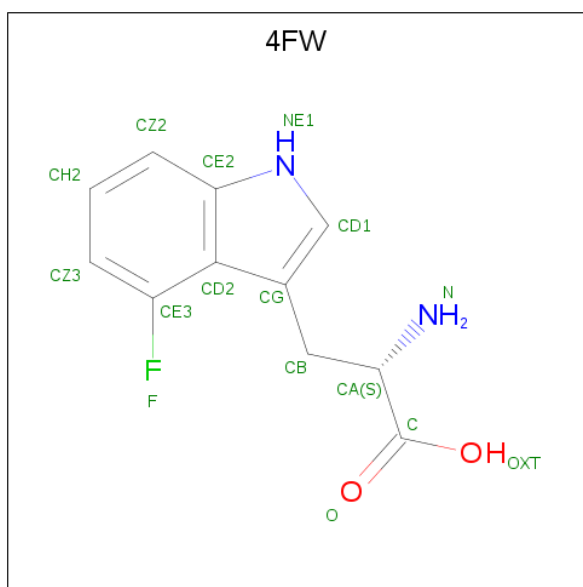
Mol	Chain	Residues	Atoms					ZeroOcc	AltConf	Trace
			Total	C	N	O	S			
1	B	414	Total 3180	C 2032	N 555	O 576	S 17	0	7	0
1	A	413	Total 3179	C 2035	N 547	O 579	S 18	0	8	0

- Molecule 2 is FLAVIN-ADENINE DINUCLEOTIDE (three-letter code: FAD) (formula: $C_{27}H_{33}N_9O_{15}P_2$).



Mol	Chain	Residues	Atoms					ZeroOcc	AltConf
			Total	C	N	O	P		
2	B	1	Total 53	C 27	N 9	O 15	P 2	0	0
2	A	1	Total 53	C 27	N 9	O 15	P 2	0	0

- Molecule 3 is 4-FLUOROTRYPTOPHANE (three-letter code: 4FW) (formula: $C_{11}H_{11}FN_2O_2$).



Mol	Chain	Residues	Atoms				ZeroOcc	AltConf	
3	B	1	Total	C	F	N	O	0	0
			16	11	1	2	2		
3	A	1	Total	C	F	N	O	0	0
			16	11	1	2	2		

- Molecule 4 is MAGNESIUM ION (three-letter code: MG) (formula: Mg).

Mol	Chain	Residues	Atoms		ZeroOcc	AltConf
4	B	1	Total	Mg	0	0
			1	1		
4	A	1	Total	Mg	0	0
			1	1		

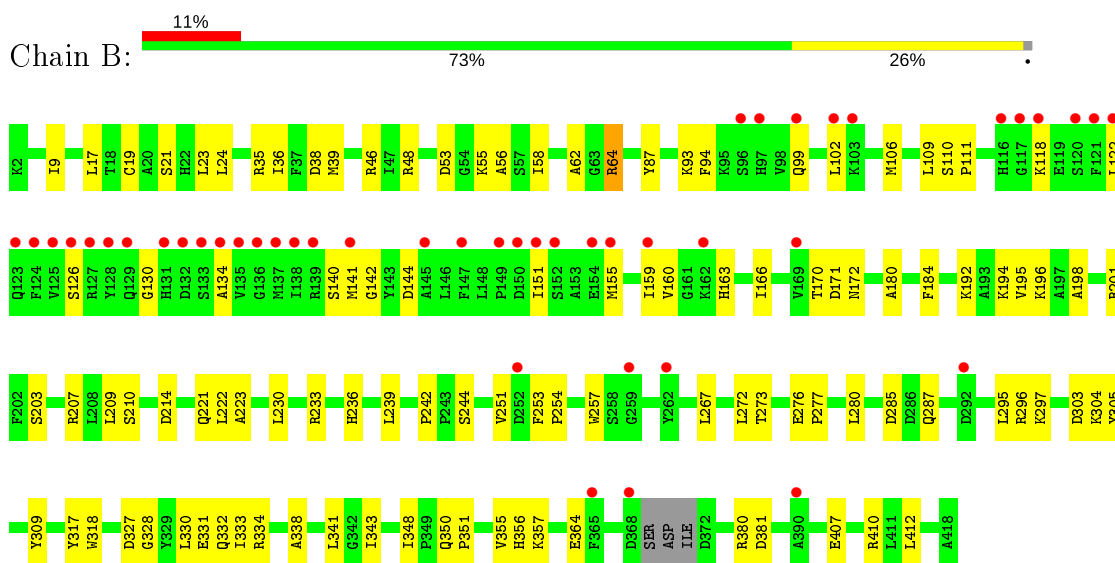
- Molecule 5 is water.

Mol	Chain	Residues	Atoms		ZeroOcc	AltConf
5	A	8	Total	O	0	0
			8	8		

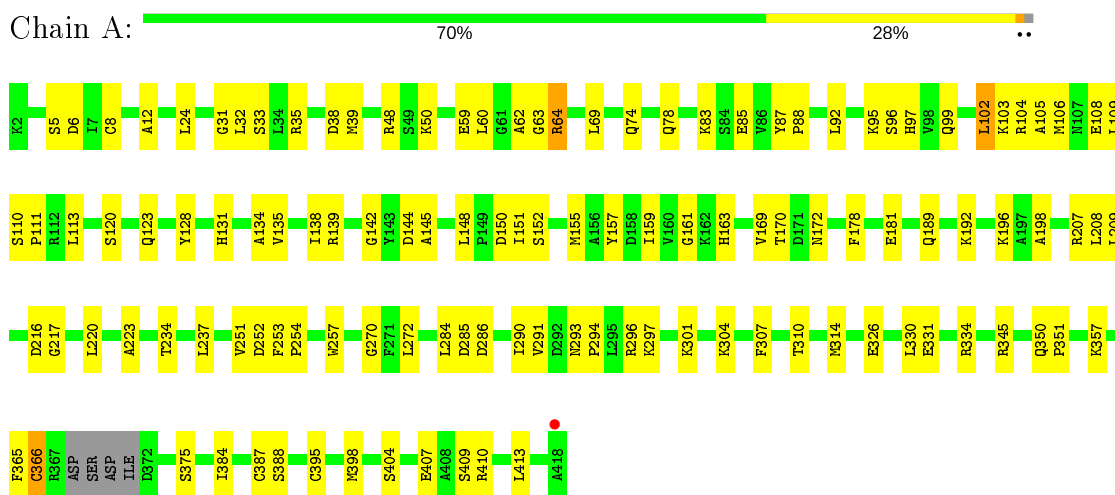
3 Residue-property plots i

These plots are drawn for all protein, RNA and DNA chains in the entry. The first graphic for a chain summarises the proportions of the various outlier classes displayed in the second graphic. The second graphic shows the sequence view annotated by issues in geometry and electron density. Residues are color-coded according to the number of geometric quality criteria for which they contain at least one outlier: green = 0, yellow = 1, orange = 2 and red = 3 or more. A red dot above a residue indicates a poor fit to the electron density ($RSRZ > 2$). Stretches of 2 or more consecutive residues without any outlier are shown as a green connector. Residues present in the sample, but not in the model, are shown in grey.

- Molecule 1: Flavin-dependent L-tryptophan oxidase VioA



- Molecule 1: Flavin-dependent L-tryptophan oxidase VioA



4 Data and refinement statistics

Property	Value	Source
Space group	C 2 2 21	Depositor
Cell constants a, b, c, α , β , γ	151.81Å 174.88Å 93.92Å 90.00° 90.00° 90.00°	Depositor
Resolution (Å)	59.03 – 3.00 72.65 – 3.00	Depositor EDS
% Data completeness (in resolution range)	99.6 (59.03-3.00) 99.9 (72.65-3.00)	Depositor EDS
R_{merge}	0.27	Depositor
R_{sym}	(Not available)	Depositor
$\langle I/\sigma(I) \rangle$ ¹	2.39 (at 3.01Å)	Xtrriage
Refinement program	PHENIX (1.10.1_2155: ???)	Depositor
R, R_{free}	0.195 , 0.262 0.198 , 0.258	Depositor DCC
R_{free} test set	1235 reflections (4.86%)	wwPDB-VP
Wilson B-factor (Å ²)	60.5	Xtrriage
Anisotropy	0.729	Xtrriage
Bulk solvent k_{sol} (e/Å ³), B_{sol} (Å ²)	0.29 , 50.5	EDS
L-test for twinning ²	$\langle L \rangle = 0.51$, $\langle L^2 \rangle = 0.34$	Xtrriage
Estimated twinning fraction	No twinning to report.	Xtrriage
F_o, F_c correlation	0.91	EDS
Total number of atoms	6507	wwPDB-VP
Average B, all atoms (Å ²)	65.0	wwPDB-VP

Xtrriage's analysis on translational NCS is as follows: *The largest off-origin peak in the Patterson function is 3.92% of the height of the origin peak. No significant pseudotranslation is detected.*

¹Intensities estimated from amplitudes.

²Theoretical values of $\langle |L| \rangle$, $\langle L^2 \rangle$ for acentric reflections are 0.5, 0.333 respectively for untwinned datasets, and 0.375, 0.2 for perfectly twinned datasets.

5 Model quality [i](#)

5.1 Standard geometry [i](#)

Bond lengths and bond angles in the following residue types are not validated in this section: 4FW, MG, FAD

The Z score for a bond length (or angle) is the number of standard deviations the observed value is removed from the expected value. A bond length (or angle) with $|Z| > 5$ is considered an outlier worth inspection. RMSZ is the root-mean-square of all Z scores of the bond lengths (or angles).

Mol	Chain	Bond lengths		Bond angles	
		RMSZ	# $ Z > 5$	RMSZ	# $ Z > 5$
1	A	0.56	1/3282 (0.0%)	0.72	1/4451 (0.0%)
1	B	0.53	2/3283 (0.1%)	0.65	0/4447
All	All	0.54	3/6565 (0.0%)	0.68	1/8898 (0.0%)

Chiral center outliers are detected by calculating the chiral volume of a chiral center and verifying if the center is modelled as a planar moiety or with the opposite hand. A planarity outlier is detected by checking planarity of atoms in a peptide group, atoms in a mainchain group or atoms of a sidechain that are expected to be planar.

Mol	Chain	#Chirality outliers	#Planarity outliers
1	A	0	1

All (3) bond length outliers are listed below:

Mol	Chain	Res	Type	Atoms	Z	Observed(Å)	Ideal(Å)
1	B	276	GLU	C-N	-8.40	1.18	1.34
1	A	366	CYS	CB-SG	6.09	1.92	1.82
1	B	19	CYS	CB-SG	-5.27	1.73	1.81

All (1) bond angle outliers are listed below:

Mol	Chain	Res	Type	Atoms	Z	Observed(°)	Ideal(°)
1	A	69	LEU	CB-CG-CD1	-5.70	101.32	111.00

There are no chirality outliers.

All (1) planarity outliers are listed below:

Mol	Chain	Res	Type	Group
1	A	365	PHE	Peptide

5.2 Too-close contacts [\(i\)](#)

In the following table, the Non-H and H(model) columns list the number of non-hydrogen atoms and hydrogen atoms in the chain respectively. The H(added) column lists the number of hydrogen atoms added and optimized by MolProbity. The Clashes column lists the number of clashes within the asymmetric unit, whereas Symm-Clashes lists symmetry related clashes.

Mol	Chain	Non-H	H(model)	H(added)	Clashes	Symm-Clashes
1	A	3179	0	3031	89	0
1	B	3180	0	3040	85	0
2	A	53	0	30	5	0
2	B	53	0	31	6	0
3	A	16	0	10	1	0
3	B	16	0	10	2	0
4	A	1	0	0	0	0
4	B	1	0	0	0	0
5	A	8	0	0	3	0
All	All	6507	0	6152	175	0

The all-atom clashscore is defined as the number of clashes found per 1000 atoms (including hydrogen atoms). The all-atom clashscore for this structure is 14.

All (175) close contacts within the same asymmetric unit are listed below, sorted by their clash magnitude.

Atom-1	Atom-2	Interatomic distance (Å)	Clash overlap (Å)
1:B:64:ARG:NH2	3:B:502:4FW:OXT	1.67	1.26
1:A:104:ARG:O	1:A:108:GLU:OE2	1.66	1.14
1:A:375:SER:OG	1:A:407:GLU:HG2	1.52	1.09
1:B:142:GLY:O	1:B:297:LYS:NZ	2.05	0.90
1:A:375:SER:OG	1:A:407:GLU:CG	2.21	0.89
1:B:144:ASP:OD2	1:B:296:ARG:NH1	2.07	0.88
1:A:252:ASP:O	1:A:257:TRP:NE1	2.07	0.86
1:A:331:GLU:OE1	1:A:345:ARG:NH2	2.10	0.83
1:A:96:SER:H	1:A:99:GLN:HG3	1.47	0.79
1:A:96:SER:OG	1:A:99:GLN:HG2	1.83	0.78
1:B:407:GLU:OE1	1:B:410:ARG:NH2	2.16	0.78
1:B:272:LEU:HD23	1:B:351:PRO:HG3	1.69	0.75
1:B:39:MET:HG2	1:B:207:ARG:HB2	1.71	0.72
1:B:93:LYS:H	1:B:287:GLN:HE22	1.38	0.72
1:A:170:THR:HG23	1:A:172:ASN:H	1.55	0.71
1:B:21:SER:HB2	1:B:194:LYS:HE3	1.70	0.71
1:B:214:ASP:O	1:B:233:ARG:NH2	2.24	0.71
1:A:407:GLU:OE1	1:A:410:ARG:NH2	2.24	0.70

Continued on next page...

Continued from previous page...

Atom-1	Atom-2	Interatomic distance (Å)	Clash overlap (Å)
1:B:93:LYS:HB2	1:B:287:GLN:HE22	1.54	0.70
1:B:62:ALA:HA	2:B:501:FAD:N5	2.06	0.70
1:B:23:LEU:HD21	1:B:412:LEU:HD23	1.74	0.70
1:A:375:SER:OG	1:A:407:GLU:CB	2.39	0.70
1:A:96:SER:O	1:A:97:HIS:C	2.31	0.69
1:B:106:MET:HA	1:B:109:LEU:HB2	1.75	0.68
2:A:501:FAD:O2P	5:A:601:HOH:O	2.10	0.68
1:B:272:LEU:HD21	1:B:333:ILE:HD11	1.77	0.67
1:B:210:SER:HB3	1:B:221:GLN:HB2	1.78	0.66
1:A:294:PRO:HB3	1:A:314:MET:HE1	1.79	0.65
1:A:96:SER:H	1:A:99:GLN:CG	2.10	0.65
1:A:209:LEU:HD11	1:A:223:ALA:HB2	1.78	0.64
1:A:99:GLN:HA	1:A:102:LEU:HD22	1.79	0.63
1:A:144:ASP:OD2	1:A:296:ARG:NH1	2.32	0.63
1:B:280:LEU:HD23	1:B:285:ASP:OD1	1.98	0.63
1:B:317:TYR:OH	1:B:332:GLN:OE1	2.16	0.63
1:A:64:ARG:NH1	1:A:87:TYR:OH	2.30	0.62
1:A:96:SER:N	1:A:99:GLN:HG3	2.15	0.62
1:A:155:MET:O	1:A:159:ILE:HD12	1.99	0.61
1:B:64:ARG:HH21	3:B:502:4FW:C	1.99	0.61
1:A:50:LYS:HG3	1:A:60:LEU:HD11	1.84	0.60
1:B:251:VAL:CG1	1:B:257:TRP:HZ2	2.14	0.60
1:A:139:ARG:O	1:A:296:ARG:NH2	2.32	0.60
1:A:163:HIS:NE2	3:A:502:4FW:HB2	2.16	0.59
1:A:409:SER:O	1:A:413:LEU:HD12	2.02	0.59
1:B:341:LEU:HB2	1:B:343:ILE:HG12	1.85	0.59
1:B:380:ARG:HG3	1:B:381:ASP:OD1	2.03	0.58
1:A:59:GLU:HG2	1:A:63:GLY:HA2	1.84	0.58
1:B:236:HIS:HB3	1:B:412:LEU:HD11	1.85	0.57
1:A:375:SER:HG	1:A:407:GLU:HG2	1.64	0.57
1:A:48:ARG:HH12	1:A:357:LYS:HZ2	1.53	0.57
1:A:62:ALA:HA	2:A:501:FAD:N5	2.19	0.57
1:B:35:ARG:HB2	1:B:201[A]:ARG:HH21	1.70	0.56
1:B:93:LYS:HB2	1:B:287:GLN:NE2	2.20	0.56
1:A:106:MET:HG3	1:A:157:TYR:CE2	2.40	0.56
1:A:387:CYS:HB2	1:A:404:SER:OG	2.04	0.56
1:B:155:MET:O	1:B:159:ILE:HD12	2.05	0.56
1:B:327[A]:ASP:OD1	1:B:328:GLY:N	2.38	0.56
1:B:257:TRP:CD1	1:B:257:TRP:N	2.73	0.56
1:A:192:LYS:HE2	1:A:196:LYS:HE3	1.87	0.55
1:A:252:ASP:O	1:A:257:TRP:CD1	2.59	0.55

Continued on next page...

Continued from previous page...

Atom-1	Atom-2	Interatomic distance (Å)	Clash overlap (Å)
1:B:251:VAL:HG11	1:B:257:TRP:HZ2	1.71	0.55
1:A:5:SER:O	1:A:234:THR:HA	2.07	0.54
1:B:35:ARG:NH1	1:B:201[B]:ARG:HG2	2.23	0.54
1:A:131:HIS:O	1:A:135:VAL:HG23	2.08	0.54
1:B:151:ILE:HA	1:B:155:MET:HE3	1.90	0.54
1:A:152:SER:OG	1:A:155:MET:HG2	2.07	0.54
1:B:277:PRO:O	1:B:280:LEU:HD12	2.07	0.54
1:A:74:GLN:O	1:A:78:GLN:HG3	2.07	0.53
1:A:161:GLY:HA2	1:A:170:THR:HG21	1.91	0.53
1:B:53:ASP:O	1:B:55:LYS:HG3	2.08	0.52
1:B:46:ARG:NH2	1:B:242:PRO:HB3	2.25	0.52
1:A:110:SER:O	1:A:113:LEU:HB2	2.09	0.52
1:A:142:GLY:O	1:A:297:LYS:NZ	2.40	0.52
1:A:285:ASP:OD1	1:A:285:ASP:N	2.44	0.51
1:B:160:VAL:HG13	1:B:166:ILE:HD13	1.92	0.51
1:B:192:LYS:HE2	1:B:196:LYS:HE3	1.93	0.50
1:A:301:LYS:HG3	1:A:304:LYS:HE3	1.93	0.50
1:B:110:SER:N	1:B:111:PRO:HD3	2.26	0.50
1:A:109:LEU:HD21	1:A:128:TYR:HB3	1.93	0.50
1:A:62:ALA:HA	2:A:501:FAD:C5X	2.41	0.50
1:A:272:LEU:HD23	1:A:351:PRO:HG3	1.93	0.49
1:A:31:GLY:O	1:A:32:LEU:HD23	2.13	0.49
1:B:170:THR:HG22	1:B:171:ASP:H	1.76	0.49
1:B:39:MET:HG3	2:B:501:FAD:C4A	2.43	0.49
1:A:12:ALA:N	1:A:38:ASP:OD2	2.42	0.49
1:A:59:GLU:HG3	5:A:604:HOH:O	2.13	0.49
1:B:93:LYS:HB3	1:B:94:PHE:HD1	1.78	0.49
1:A:145:ALA:O	1:A:151:ILE:HD12	2.13	0.48
1:A:291:VAL:HG23	1:A:293:ASN:H	1.78	0.48
1:B:273:THR:HG22	1:B:305:TYR:HB3	1.95	0.48
1:B:303:ASP:OD1	1:B:303:ASP:N	2.46	0.48
1:B:122:LEU:O	1:B:126:SER:HB2	2.12	0.48
1:A:48:ARG:HH22	1:A:357:LYS:HZ3	1.61	0.48
1:A:310:THR:CG2	1:A:314:MET:HB3	2.43	0.48
1:B:62:ALA:HA	2:B:501:FAD:C4X	2.44	0.48
1:B:318:TRP:CH2	1:B:333:ILE:HG22	2.48	0.48
1:A:88:PRO:HB2	1:A:286:ASP:HB3	1.94	0.48
1:A:330:LEU:HA	1:A:330:LEU:HD23	1.64	0.48
1:B:109:LEU:C	1:B:111:PRO:HD3	2.33	0.48
1:A:102:LEU:O	1:A:103:LYS:C	2.48	0.47
1:B:159:ILE:HG23	1:B:163:HIS:CE1	2.49	0.47

Continued on next page...

Continued from previous page...

Atom-1	Atom-2	Interatomic distance (Å)	Clash overlap (Å)
1:B:267:LEU:HD12	2:B:501:FAD:HM83	1.96	0.47
1:A:39:MET:HB3	1:A:207:ARG:HB2	1.95	0.47
1:B:338:ALA:HB2	1:B:348:ILE:HD12	1.95	0.47
1:A:95:LYS:HB3	1:A:99:GLN:O	2.15	0.47
1:A:284:LEU:HD23	1:A:284:LEU:HA	1.69	0.47
1:A:50:LYS:HG3	1:A:60:LEU:CD1	2.44	0.47
1:A:144:ASP:CG	1:A:296:ARG:HH11	2.18	0.46
1:B:93:LYS:N	1:B:287:GLN:HE22	2.11	0.46
1:B:64:ARG:HD2	1:B:87:TYR:CZ	2.50	0.46
1:A:134:ALA:O	1:A:138:ILE:HG13	2.16	0.46
1:B:253:PHE:HA	1:B:254:PRO:HA	1.74	0.46
1:B:295:LEU:HD23	1:B:318:TRP:CZ2	2.50	0.46
1:B:251:VAL:HG12	1:B:251:VAL:O	2.16	0.45
1:B:106:MET:HB2	1:B:106:MET:HE3	1.66	0.45
1:B:56:ALA:HB2	1:B:304:LYS:NZ	2.30	0.45
1:B:24:LEU:HD13	1:B:198:ALA:HB3	1.99	0.45
1:B:331:GLU:OE1	1:B:334:ARG:HD3	2.16	0.45
1:A:110:SER:OG	1:A:111:PRO:HD3	2.16	0.45
1:A:251:VAL:O	1:A:251:VAL:HG23	2.16	0.45
1:A:270:GLY:O	1:A:307:PHE:HB2	2.17	0.45
1:B:170:THR:HB	1:B:172:ASN:HB2	1.99	0.45
1:B:17:LEU:HD23	1:B:17:LEU:HA	1.84	0.45
1:A:83:LYS:HD3	1:A:181:GLU:OE1	2.17	0.45
1:A:105:ALA:O	1:A:109:LEU:HD12	2.17	0.44
1:B:64:ARG:NH1	1:B:87:TYR:OH	2.45	0.44
1:B:99:GLN:HA	1:B:102:LEU:HG	1.99	0.44
1:A:208:LEU:HD11	1:A:220:LEU:HB3	1.98	0.44
1:A:24:LEU:HD13	1:A:198:ALA:HB3	2.00	0.44
1:A:388:SER:HB2	5:A:601:HOH:O	2.18	0.44
1:B:180:ALA:HB2	1:B:184:PHE:CD1	2.53	0.44
1:B:222:LEU:HB2	1:B:230:LEU:HD21	1.99	0.43
1:B:48:ARG:HH22	1:B:357:LYS:HD3	1.82	0.43
1:A:253:PHE:CG	1:A:254:PRO:HA	2.53	0.43
1:A:92:LEU:HD11	1:A:290:ILE:HD12	1.99	0.43
1:A:8:CYS:HA	1:A:35:ARG:O	2.18	0.43
1:B:170:THR:HG22	1:B:171:ASP:N	2.33	0.43
1:A:148:LEU:HB3	1:A:150:ASP:OD1	2.18	0.43
1:A:216:ASP:OD2	1:A:217:GLY:N	2.49	0.43
1:B:93:LYS:H	1:B:287:GLN:NE2	2.10	0.43
1:A:170:THR:HG23	1:A:172:ASN:N	2.28	0.43
1:A:62:ALA:HA	2:A:501:FAD:C4X	2.48	0.43

Continued on next page...

Continued from previous page...

Atom-1	Atom-2	Interatomic distance (Å)	Clash overlap (Å)
1:A:85:GLU:O	1:A:178:PHE:HD1	2.01	0.43
1:B:35:ARG:HD2	1:B:203:SER:OG	2.19	0.43
1:B:244:SER:OG	1:B:364:GLU:OE2	2.29	0.43
1:B:58:ILE:HG22	1:B:305:TYR:CZ	2.53	0.43
1:B:130:GLY:O	1:B:134:ALA:N	2.51	0.43
1:A:398:MET:HB3	2:A:501:FAD:H2'	2.01	0.43
1:B:9:ILE:O	1:B:36:ILE:HA	2.19	0.43
1:A:99:GLN:CA	1:A:102:LEU:HD22	2.49	0.42
1:B:141:MET:HE2	1:B:141:MET:HB2	1.85	0.42
1:B:192:LYS:NZ	1:B:196:LYS:NZ	2.67	0.42
1:B:295:LEU:HD23	1:B:318:TRP:HZ2	1.84	0.42
1:A:310:THR:HG21	1:A:314:MET:HB3	2.00	0.42
1:B:38:ASP:OD2	2:B:501:FAD:O3B	2.35	0.42
1:A:142:GLY:HA2	1:A:296:ARG:NH2	2.34	0.42
1:B:239:LEU:HA	1:B:239:LEU:HD23	1.78	0.42
1:B:144:ASP:CG	1:B:296:ARG:HH12	2.22	0.42
1:A:257:TRP:HH2	1:A:384:ILE:CG1	2.33	0.41
1:A:103:LYS:HA	1:A:169:VAL:HG13	2.03	0.41
1:A:150:ASP:N	1:A:150:ASP:OD1	2.42	0.41
1:A:161:GLY:CA	1:A:170:THR:HG21	2.49	0.41
1:B:251:VAL:HG12	1:B:257:TRP:HZ2	1.82	0.41
1:B:192:LYS:HZ1	1:B:196:LYS:HZ1	1.68	0.41
1:B:62:ALA:HA	2:B:501:FAD:C5X	2.50	0.41
1:A:220:LEU:HD21	1:A:237:LEU:CD1	2.51	0.41
1:A:120:SER:HB3	1:A:123:GLN:H	1.85	0.41
1:B:24:LEU:HD11	1:B:195:VAL:HG13	2.02	0.41
1:A:152:SER:H	1:A:155:MET:HE3	1.86	0.41
1:A:251:VAL:O	1:A:251:VAL:CG2	2.69	0.41
1:B:355:VAL:HG22	1:B:356:HIS:H	1.86	0.40
1:A:334:ARG:NH1	1:A:350[A]:GLN:HG2	2.35	0.40
1:B:209:LEU:HD11	1:B:223:ALA:HB2	2.02	0.40
1:A:6:ASP:HB2	1:A:33:SER:O	2.22	0.40

There are no symmetry-related clashes.

5.3 Torsion angles [i](#)

5.3.1 Protein backbone [i](#)

In the following table, the Percentiles column shows the percent Ramachandran outliers of the chain as a percentile score with respect to all X-ray entries followed by that with respect to entries

of similar resolution.

The Analysed column shows the number of residues for which the backbone conformation was analysed, and the total number of residues.

Mol	Chain	Analysed	Favoured	Allowed	Outliers	Percentiles	
1	A	417/417 (100%)	386 (93%)	31 (7%)	0	100	100
1	B	417/417 (100%)	375 (90%)	41 (10%)	1 (0%)	47	82
All	All	834/834 (100%)	761 (91%)	72 (9%)	1 (0%)	51	85

All (1) Ramachandran outliers are listed below:

Mol	Chain	Res	Type
1	B	118	LYS

5.3.2 Protein sidechains [i](#)

In the following table, the Percentiles column shows the percent sidechain outliers of the chain as a percentile score with respect to all X-ray entries followed by that with respect to entries of similar resolution.

The Analysed column shows the number of residues for which the sidechain conformation was analysed, and the total number of residues.

Mol	Chain	Analysed	Rotameric	Outliers	Percentiles	
1	A	317/340 (93%)	310 (98%)	7 (2%)	52	81
1	B	316/340 (93%)	312 (99%)	4 (1%)	69	89
All	All	633/680 (93%)	622 (98%)	11 (2%)	62	85

All (11) residues with a non-rotameric sidechain are listed below:

Mol	Chain	Res	Type
1	B	64	ARG
1	B	140	SER
1	B	309	TYR
1	B	350	GLN
1	A	64	ARG
1	A	102	LEU
1	A	189[A]	GLN
1	A	189[B]	GLN
1	A	326	GLU
1	A	366	CYS
1	A	395	CYS

Some sidechains can be flipped to improve hydrogen bonding and reduce clashes. All (2) such sidechains are listed below:

Mol	Chain	Res	Type
1	B	287	GLN
1	A	172	ASN

5.3.3 RNA [i](#)

There are no RNA molecules in this entry.

5.4 Non-standard residues in protein, DNA, RNA chains [i](#)

There are no non-standard protein/DNA/RNA residues in this entry.

5.5 Carbohydrates [i](#)

There are no carbohydrates in this entry.

5.6 Ligand geometry [i](#)

Of 6 ligands modelled in this entry, 2 are monoatomic - leaving 4 for Mogul analysis.

In the following table, the Counts columns list the number of bonds (or angles) for which Mogul statistics could be retrieved, the number of bonds (or angles) that are observed in the model and the number of bonds (or angles) that are defined in the Chemical Component Dictionary. The Link column lists molecule types, if any, to which the group is linked. The Z score for a bond length (or angle) is the number of standard deviations the observed value is removed from the expected value. A bond length (or angle) with $|Z| > 2$ is considered an outlier worth inspection. RMSZ is the root-mean-square of all Z scores of the bond lengths (or angles).

Mol	Type	Chain	Res	Link	Bond lengths			Bond angles		
					Counts	RMSZ	# Z > 2	Counts	RMSZ	# Z > 2
3	4FW	A	502	-	13,17,17	1.57	1 (7%)	11,24,24	2.32	4 (36%)
2	FAD	A	501	4	51,58,58	4.21	20 (39%)	60,89,89	2.08	12 (20%)
2	FAD	B	501	4	51,58,58	4.19	21 (41%)	60,89,89	2.08	13 (21%)
3	4FW	B	502	-	13,17,17	1.29	1 (7%)	11,24,24	2.28	5 (45%)

In the following table, the Chirals column lists the number of chiral outliers, the number of chiral centers analysed, the number of these observed in the model and the number defined in the Chemical Component Dictionary. Similar counts are reported in the Torsion and Rings columns. '-' means no outliers of that kind were identified.

Mol	Type	Chain	Res	Link	Chirals	Torsions	Rings
3	4FW	A	502	-	-	1/3/8/8	0/2/2/2
2	FAD	A	501	4	-	14/30/50/50	0/6/6/6
2	FAD	B	501	4	-	3/30/50/50	0/6/6/6
3	4FW	B	502	-	-	3/3/8/8	0/2/2/2

All (43) bond length outliers are listed below:

Mol	Chain	Res	Type	Atoms	Z	Observed(Å)	Ideal(Å)
2	A	501	FAD	C8A-N7A	-14.24	1.09	1.34
2	B	501	FAD	C8A-N7A	-14.14	1.09	1.34
2	B	501	FAD	C4X-C10	12.12	1.50	1.38
2	A	501	FAD	C4X-C10	11.65	1.50	1.38
2	B	501	FAD	C4A-N3A	-11.36	1.20	1.35
2	A	501	FAD	C4A-N3A	-11.13	1.20	1.35
2	B	501	FAD	C5A-C4A	8.53	1.63	1.40
2	A	501	FAD	C5A-C4A	8.36	1.63	1.40
2	A	501	FAD	C2A-N3A	-8.22	1.18	1.32
2	B	501	FAD	C2A-N3A	-7.85	1.19	1.32
2	A	501	FAD	C5X-N5	7.70	1.48	1.35
2	B	501	FAD	C5X-N5	7.28	1.47	1.35
2	B	501	FAD	O4B-C1B	6.18	1.49	1.41
2	A	501	FAD	C2B-C1B	-5.73	1.45	1.53
2	A	501	FAD	C2A-N1A	-5.49	1.23	1.33
2	B	501	FAD	C2A-N1A	-5.41	1.23	1.33
2	B	501	FAD	C5A-N7A	-5.40	1.20	1.39
2	A	501	FAD	C5A-N7A	-5.40	1.20	1.39
2	A	501	FAD	C2-N1	5.12	1.48	1.38
2	B	501	FAD	C2-N1	4.83	1.47	1.38
2	A	501	FAD	O4B-C1B	4.62	1.47	1.41
2	B	501	FAD	C6A-C5A	4.21	1.58	1.43
2	A	501	FAD	C6A-C5A	3.99	1.58	1.43
3	A	502	4FW	CZ3-CE3	3.94	1.40	1.36
2	B	501	FAD	C2B-C1B	-3.79	1.48	1.53
2	B	501	FAD	C4-C4X	3.31	1.47	1.41
2	A	501	FAD	C10-N1	-3.20	1.29	1.33
3	B	502	4FW	CZ3-CE3	3.18	1.39	1.36
2	A	501	FAD	O2'-C2'	-3.16	1.36	1.43
2	A	501	FAD	C4-C4X	2.89	1.46	1.41
2	A	501	FAD	C2-N3	2.76	1.43	1.38
2	A	501	FAD	C4-N3	2.60	1.37	1.33
2	B	501	FAD	O2'-C2'	-2.43	1.38	1.43
2	B	501	FAD	C3B-C4B	-2.31	1.47	1.53
2	B	501	FAD	C10-N1	-2.25	1.30	1.33

Continued on next page...

Continued from previous page...

Mol	Chain	Res	Type	Atoms	Z	Observed(Å)	Ideal(Å)
2	A	501	FAD	C6A-N6A	2.24	1.42	1.34
2	B	501	FAD	O4B-C4B	2.19	1.49	1.45
2	B	501	FAD	C6-C5X	-2.19	1.38	1.41
2	B	501	FAD	C2B-C3B	-2.14	1.47	1.53
2	B	501	FAD	C2-N3	2.13	1.42	1.38
2	A	501	FAD	C3B-C4B	-2.11	1.47	1.53
2	A	501	FAD	O4B-C4B	2.11	1.49	1.45
2	B	501	FAD	C6A-N6A	2.08	1.41	1.34

All (34) bond angle outliers are listed below:

Mol	Chain	Res	Type	Atoms	Z	Observed(°)	Ideal(°)
2	B	501	FAD	C4A-C5A-N7A	-8.35	100.70	109.40
2	A	501	FAD	C4-N3-C2	7.89	121.80	115.14
2	B	501	FAD	C4-N3-C2	7.52	121.49	115.14
2	A	501	FAD	C4A-C5A-N7A	-7.47	101.62	109.40
2	A	501	FAD	C1'-N10-C10	5.84	123.64	118.41
3	A	502	4FW	CZ3-CE3-CD2	-5.50	119.72	124.18
2	A	501	FAD	C5X-C9A-N10	4.94	121.30	117.72
3	B	502	4FW	CZ3-CE3-CD2	-4.31	120.69	124.18
3	B	502	4FW	CB-CA-C	4.17	117.44	110.69
2	B	501	FAD	C4X-C4-N3	-3.47	118.69	123.43
2	B	501	FAD	C1'-N10-C9A	3.29	120.89	118.29
2	A	501	FAD	C4-C4X-C10	-3.15	117.87	119.95
2	A	501	FAD	C4X-C4-N3	-3.04	119.27	123.43
2	B	501	FAD	C9A-N10-C10	-2.86	118.16	121.91
3	A	502	4FW	F-CE3-CD2	2.82	121.62	118.56
3	B	502	4FW	CB-CG-CD1	-2.82	124.48	127.97
2	B	501	FAD	C1'-N10-C10	2.80	120.92	118.41
2	B	501	FAD	C2B-C3B-C4B	2.78	108.05	102.64
2	A	501	FAD	C9A-N10-C10	-2.67	118.42	121.91
3	A	502	4FW	CB-CA-C	2.66	115.00	110.69
2	B	501	FAD	O5'-C5'-C4'	-2.56	102.52	109.36
2	A	501	FAD	O4B-C1B-C2B	-2.54	103.21	106.93
2	B	501	FAD	C5'-C4'-C3'	-2.49	107.39	112.20
3	A	502	4FW	CB-CG-CD1	2.47	131.02	127.97
2	B	501	FAD	C5X-C9A-N10	2.46	119.50	117.72
2	B	501	FAD	C4-C4X-N5	2.45	121.40	118.60
3	B	502	4FW	F-CE3-CD2	2.45	121.21	118.56
3	B	502	4FW	CB-CG-CD2	2.40	130.55	126.42
2	A	501	FAD	N6A-C6A-N1A	2.35	123.45	118.57
2	B	501	FAD	P-O3P-PA	-2.29	124.98	132.83

Continued on next page...

Continued from previous page...

Mol	Chain	Res	Type	Atoms	Z	Observed(°)	Ideal(°)
2	A	501	FAD	C5'-C4'-C3'	-2.20	107.96	112.20
2	B	501	FAD	C10-C4X-N5	-2.09	119.81	121.26
2	A	501	FAD	P-O3P-PA	-2.04	125.83	132.83
2	A	501	FAD	C4'-C3'-C2'	-2.03	109.14	113.36

There are no chirality outliers.

All (21) torsion outliers are listed below:

Mol	Chain	Res	Type	Atoms
3	B	502	4FW	C-CA-CB-CG
3	A	502	4FW	CA-CB-CG-CD1
2	A	501	FAD	C5B-O5B-PA-O1A
2	A	501	FAD	C5B-O5B-PA-O2A
2	A	501	FAD	C5B-O5B-PA-O3P
2	A	501	FAD	O4B-C4B-C5B-O5B
2	A	501	FAD	C2'-C1'-N10-C9A
2	A	501	FAD	C2'-C1'-N10-C10
2	A	501	FAD	C3'-C4'-C5'-O5'
2	A	501	FAD	O4'-C4'-C5'-O5'
2	A	501	FAD	C5'-O5'-P-O1P
2	A	501	FAD	C5'-O5'-P-O2P
2	A	501	FAD	C3B-C4B-C5B-O5B
3	B	502	4FW	N-CA-CB-CG
2	B	501	FAD	PA-O3P-P-O5'
2	A	501	FAD	PA-O3P-P-O5'
3	B	502	4FW	CA-CB-CG-CD1
2	A	501	FAD	C5'-O5'-P-O3P
2	B	501	FAD	O4B-C4B-C5B-O5B
2	B	501	FAD	PA-O3P-P-O2P
2	A	501	FAD	PA-O3P-P-O1P

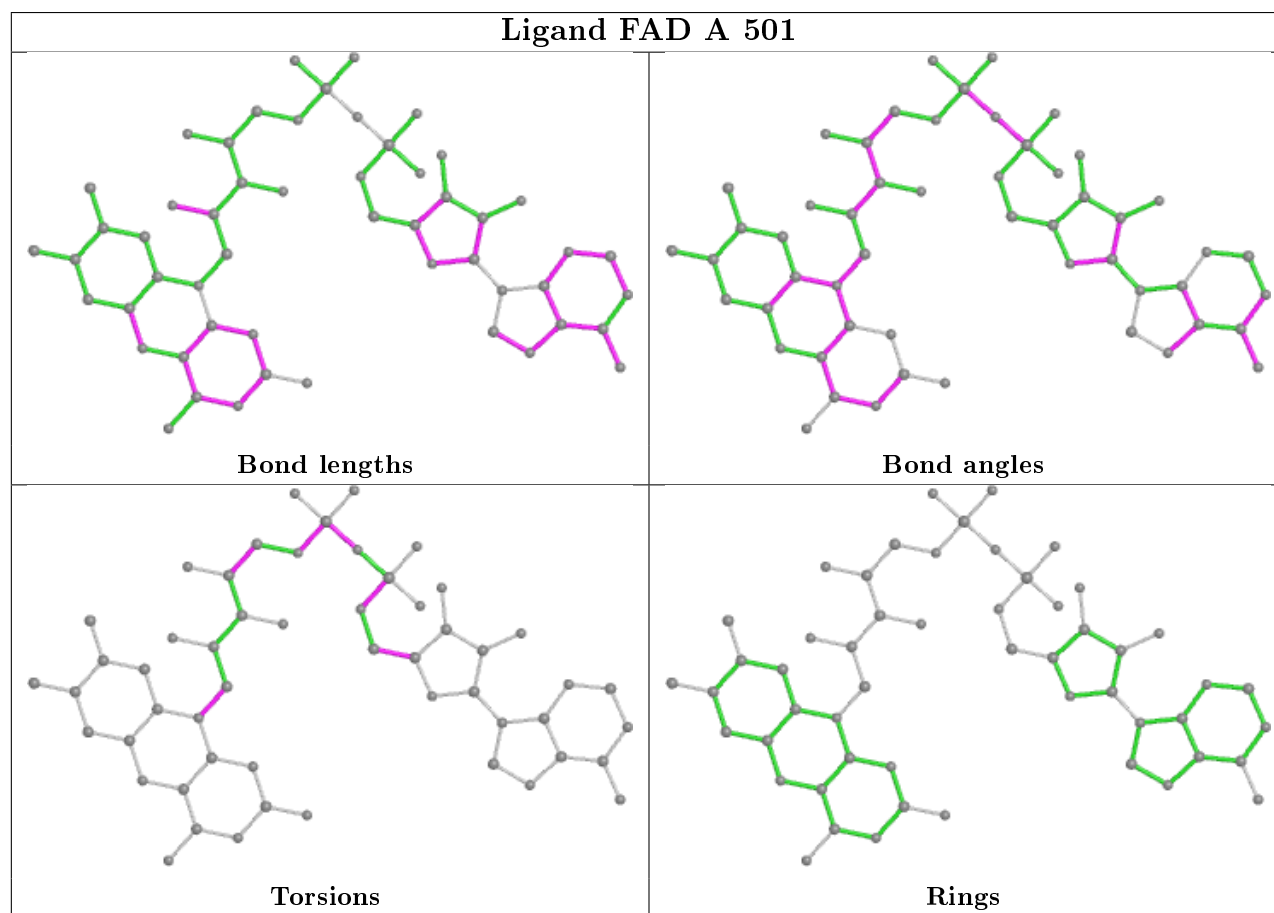
There are no ring outliers.

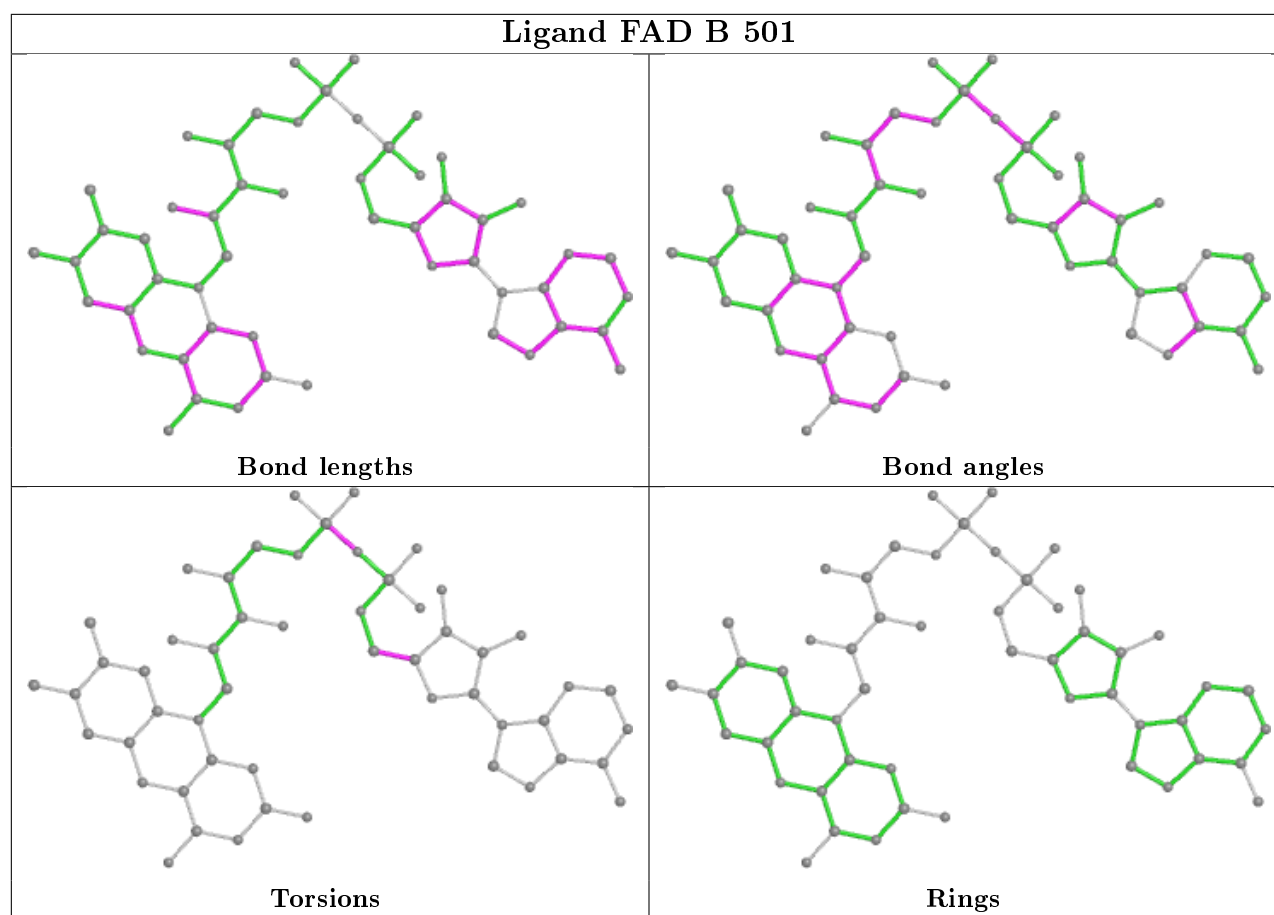
4 monomers are involved in 14 short contacts:

Mol	Chain	Res	Type	Clashes	Symm-Clashes
3	A	502	4FW	1	0
2	A	501	FAD	5	0
2	B	501	FAD	6	0
3	B	502	4FW	2	0

The following is a two-dimensional graphical depiction of Mogul quality analysis of bond lengths,

bond angles, torsion angles, and ring geometry for all instances of the Ligand of Interest. In addition, ligands with molecular weight > 250 and outliers as shown on the validation Tables will also be included. For torsion angles, if less than 5% of the Mogul distribution of torsion angles is within 10 degrees of the torsion angle in question, then that torsion angle is considered an outlier. Any bond that is central to one or more torsion angles identified as an outlier by Mogul will be highlighted in the graph. For rings, the root-mean-square deviation (RMSD) between the ring in question and similar rings identified by Mogul is calculated over all ring torsion angles. If the average RMSD is greater than 60 degrees and the minimal RMSD between the ring in question and any Mogul-identified rings is also greater than 60 degrees, then that ring is considered an outlier. The outliers are highlighted in purple. The color gray indicates Mogul did not find sufficient equivalents in the CSD to analyse the geometry.





5.7 Other polymers [i](#)

There are no such residues in this entry.

5.8 Polymer linkage issues [i](#)

The following chains have linkage breaks:

Mol	Chain	Number of breaks
1	B	1

All chain breaks are listed below:

Model	Chain	Residue-1	Atom-1	Residue-2	Atom-2	Distance (Å)
1	B	276:GLU	C	277:PRO	N	1.18

6 Fit of model and data

6.1 Protein, DNA and RNA chains

In the following table, the column labelled '#RSRZ > 2' contains the number (and percentage) of RSRZ outliers, followed by percent RSRZ outliers for the chain as percentile scores relative to all X-ray entries and entries of similar resolution. The OWAB column contains the minimum, median, 95th percentile and maximum values of the occupancy-weighted average B-factor per residue. The column labelled 'Q < 0.9' lists the number of (and percentage) of residues with an average occupancy less than 0.9.

Mol	Chain	Analysed	<RSRZ>	#RSRZ>2	OWAB(Å ²)	Q<0.9
1	A	413/417 (99%)	-0.34	1 (0%) 95 87	31, 55, 98, 118	0
1	B	414/417 (99%)	0.25	46 (11%) 5 1	36, 63, 136, 165	0
All	All	827/834 (99%)	-0.04	47 (5%) 23 8	31, 59, 121, 165	0

All (47) RSRZ outliers are listed below:

Mol	Chain	Res	Type	RSRZ
1	B	150	ASP	6.3
1	B	137	MET	5.0
1	B	132	ASP	5.0
1	B	133	SER	5.0
1	B	97	HIS	4.9
1	B	135	VAL	4.9
1	B	128	TYR	4.9
1	B	123	GLN	4.3
1	B	122	LEU	4.3
1	B	99	GLN	3.9
1	B	151	ILE	3.9
1	B	125	VAL	3.9
1	B	102	LEU	3.8
1	B	136	GLY	3.5
1	B	103	LYS	3.5
1	B	121	PHE	3.5
1	B	149	PRO	3.5
1	B	139	ARG	3.3
1	B	116	HIS	3.2
1	A	418	ALA	3.2
1	B	147	PHE	3.2
1	B	152	SER	3.1
1	B	292	ASP	3.0
1	B	117	GLY	3.0

Continued on next page...

Continued from previous page...

Mol	Chain	Res	Type	RSRZ
1	B	127	ARG	3.0
1	B	131	HIS	3.0
1	B	118	LYS	2.7
1	B	138	ILE	2.7
1	B	252	ASP	2.6
1	B	126	SER	2.6
1	B	259	GLY	2.6
1	B	262	TYR	2.6
1	B	120	SER	2.6
1	B	96	SER	2.4
1	B	124	PHE	2.4
1	B	159	ILE	2.3
1	B	145	ALA	2.3
1	B	134	ALA	2.3
1	B	141	MET	2.3
1	B	154	GLU	2.3
1	B	390	ALA	2.2
1	B	162	LYS	2.2
1	B	155	MET	2.2
1	B	365	PHE	2.1
1	B	129	GLN	2.1
1	B	169	VAL	2.1
1	B	368	ASP	2.1

6.2 Non-standard residues in protein, DNA, RNA chains [i](#)

There are no non-standard protein/DNA/RNA residues in this entry.

6.3 Carbohydrates [i](#)

There are no carbohydrates in this entry.

6.4 Ligands [i](#)

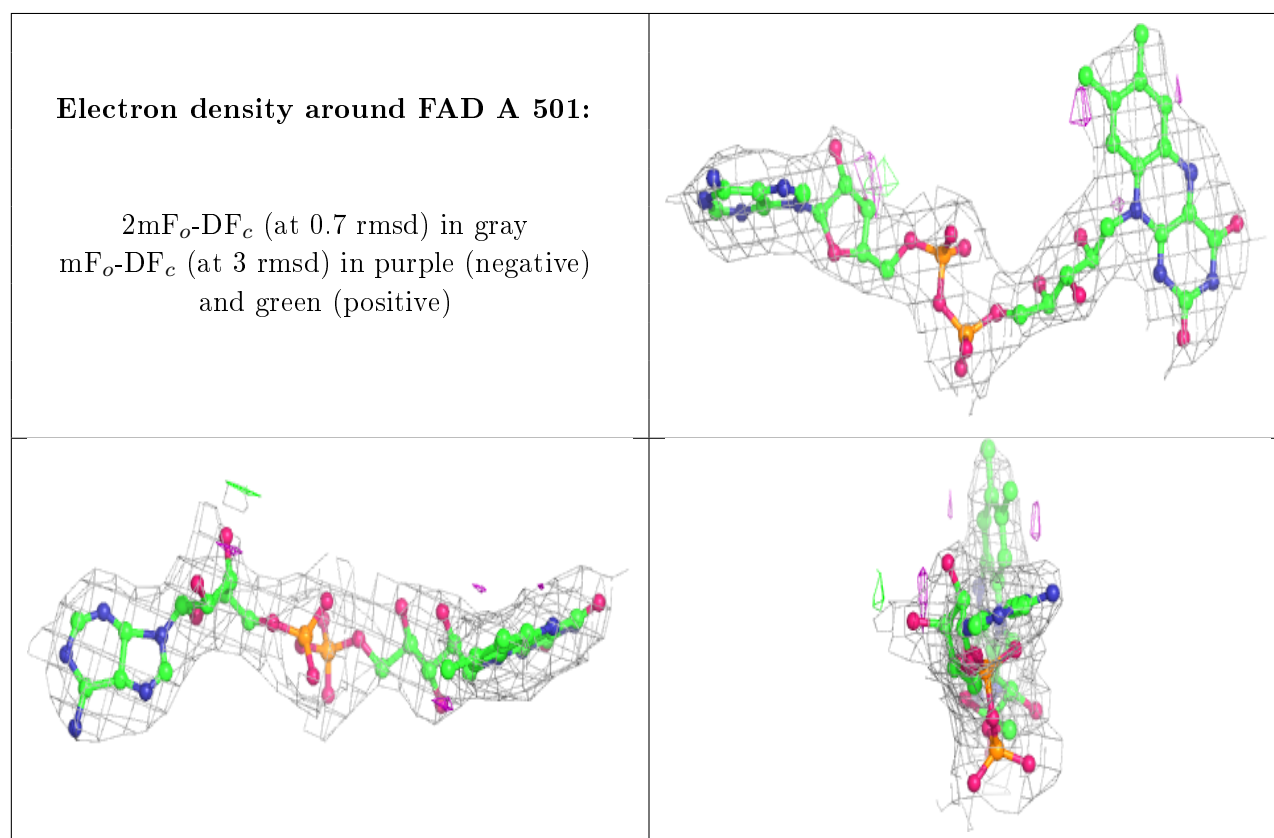
In the following table, the Atoms column lists the number of modelled atoms in the group and the number defined in the chemical component dictionary. The B-factors column lists the minimum, median, 95th percentile and maximum values of B factors of atoms in the group. The column labelled 'Q< 0.9' lists the number of atoms with occupancy less than 0.9.

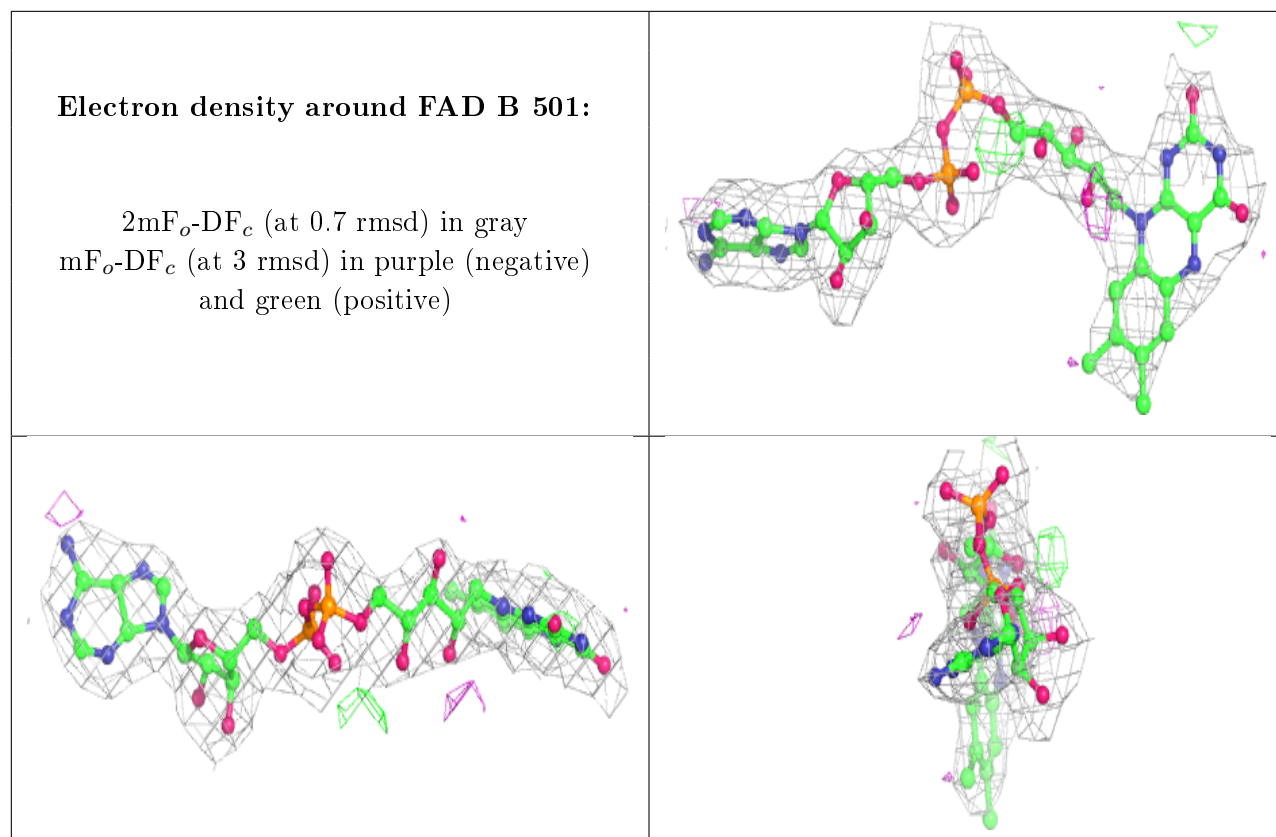
Continued on next page...

Continued from previous page...

Mol	Type	Chain	Res	Atoms	RSCC	RSR	B-factors(Å ²)	Q<0.9
3	4FW	B	502	16/16	0.84	0.63	66,85,98,98	0
4	MG	B	503	1/1	0.89	0.50	48,48,48,48	0
3	4FW	A	502	16/16	0.90	0.31	47,65,68,69	0
4	MG	A	503	1/1	0.94	0.55	54,54,54,54	0
2	FAD	A	501	53/53	0.97	0.19	30,43,58,60	0
2	FAD	B	501	53/53	0.97	0.20	32,49,60,66	0

The following is a graphical depiction of the model fit to experimental electron density of all instances of the Ligand of Interest. In addition, ligands with molecular weight > 250 and outliers as shown on the geometry validation Tables will also be included. Each fit is shown from different orientation to approximate a three-dimensional view.





6.5 Other polymers [i](#)

There are no such residues in this entry.