



Full wwPDB X-ray Structure Validation Report ⓘ

May 15, 2020 – 04:01 pm BST

PDB ID : 5FUE
Title : Crystal structure of Schistosoma mansoni HDAC8 complexed with 3- benzamido-benzohydroxamate
Authors : Marek, M.; Romier, C.
Deposited on : 2016-01-26
Resolution : 2.20 Å(reported)

This is a Full wwPDB X-ray Structure Validation Report for a publicly released PDB entry.

We welcome your comments at validation@mail.wwpdb.org

A user guide is available at

<https://www.wwpdb.org/validation/2017/XrayValidationReportHelp>

with specific help available everywhere you see the ⓘ symbol.

The following versions of software and data (see [references ⓘ](#)) were used in the production of this report:

MolProbity : 4.02b-467
Mogul : 1.8.5 (274361), CSD as541be (2020)
Xtriage (Phenix) : 1.13
EDS : 2.11
buster-report : 1.1.7 (2018)
Percentile statistics : 20191225.v01 (using entries in the PDB archive December 25th 2019)
Refmac : 5.8.0158
CCP4 : 7.0.044 (Gargrove)
Ideal geometry (proteins) : Engh & Huber (2001)
Ideal geometry (DNA, RNA) : Parkinson et al. (1996)
Validation Pipeline (wwPDB-VP) : 2.11

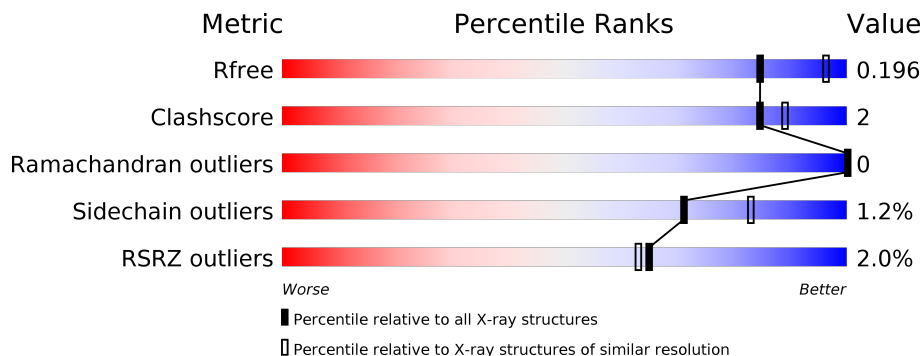
1 Overall quality at a glance i

The following experimental techniques were used to determine the structure:

X-RAY DIFFRACTION

The reported resolution of this entry is 2.20 Å.

Percentile scores (ranging between 0-100) for global validation metrics of the entry are shown in the following graphic. The table shows the number of entries on which the scores are based.



Metric	Whole archive (#Entries)	Similar resolution (#Entries, resolution range(Å))
R_{free}	130704	4898 (2.20-2.20)
Clashscore	141614	5594 (2.20-2.20)
Ramachandran outliers	138981	5503 (2.20-2.20)
Sidechain outliers	138945	5504 (2.20-2.20)
RSRZ outliers	127900	4800 (2.20-2.20)

The table below summarises the geometric issues observed across the polymeric chains and their fit to the electron density. The red, orange, yellow and green segments on the lower bar indicate the fraction of residues that contain outliers for ≥ 3 , 2, 1 and 0 types of geometric quality criteria respectively. A grey segment represents the fraction of residues that are not modelled. The numeric value for each fraction is indicated below the corresponding segment, with a dot representing fractions $\leq 5\%$. The upper red bar (where present) indicates the fraction of residues that have poor fit to the electron density. The numeric value is given above the bar.

Mol	Chain	Length	Quality of chain
1	A	446	
1	B	446	
1	C	446	
1	D	446	

2 Entry composition i

There are 7 unique types of molecules in this entry. The entry contains 13671 atoms, of which 0 are hydrogens and 0 are deuteriums.

In the tables below, the ZeroOcc column contains the number of atoms modelled with zero occupancy, the AltConf column contains the number of residues with at least one atom in alternate conformation and the Trace column contains the number of residues modelled with at most 2 atoms.

- Molecule 1 is a protein called HISTONE DEACETYLASE 8.

Mol	Chain	Residues	Atoms					ZeroOcc	AltConf	Trace
			Total	C	N	O	S			
1	A	398	3198	2065	531	587	15	0	2	0
1	B	412	3298	2127	551	605	15	0	1	0
1	C	412	3295	2126	550	604	15	0	1	0
1	D	398	3197	2065	531	586	15	0	1	0

There are 24 discrepancies between the modelled and reference sequences:

Chain	Residue	Modelled	Actual	Comment	Reference
A	441	GLY	-	expression tag	UNP A5H660
A	442	SER	-	expression tag	UNP A5H660
A	443	LEU	-	expression tag	UNP A5H660
A	444	VAL	-	expression tag	UNP A5H660
A	445	PRO	-	expression tag	UNP A5H660
A	446	ARG	-	expression tag	UNP A5H660
B	441	GLY	-	expression tag	UNP A5H660
B	442	SER	-	expression tag	UNP A5H660
B	443	LEU	-	expression tag	UNP A5H660
B	444	VAL	-	expression tag	UNP A5H660
B	445	PRO	-	expression tag	UNP A5H660
B	446	ARG	-	expression tag	UNP A5H660
C	441	GLY	-	expression tag	UNP A5H660
C	442	SER	-	expression tag	UNP A5H660
C	443	LEU	-	expression tag	UNP A5H660
C	444	VAL	-	expression tag	UNP A5H660
C	445	PRO	-	expression tag	UNP A5H660
C	446	ARG	-	expression tag	UNP A5H660
D	441	GLY	-	expression tag	UNP A5H660
D	442	SER	-	expression tag	UNP A5H660
D	443	LEU	-	expression tag	UNP A5H660

Continued on next page...

Continued from previous page...

Chain	Residue	Modelled	Actual	Comment	Reference
D	444	VAL	-	expression tag	UNP A5H660
D	445	PRO	-	expression tag	UNP A5H660
D	446	ARG	-	expression tag	UNP A5H660

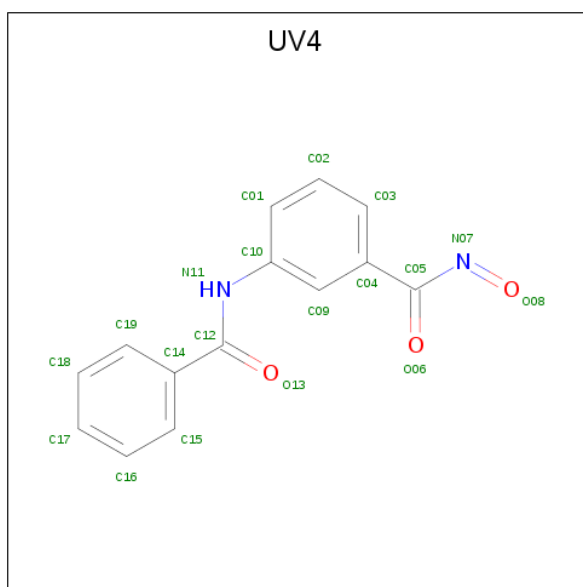
- Molecule 2 is ZINC ION (three-letter code: ZN) (formula: Zn).

Mol	Chain	Residues	Atoms	ZeroOcc	AltConf
2	B	1	Total Zn 1 1	0	0
2	A	1	Total Zn 1 1	0	0
2	D	1	Total Zn 1 1	0	0
2	C	1	Total Zn 1 1	0	0

- Molecule 3 is POTASSIUM ION (three-letter code: K) (formula: K).

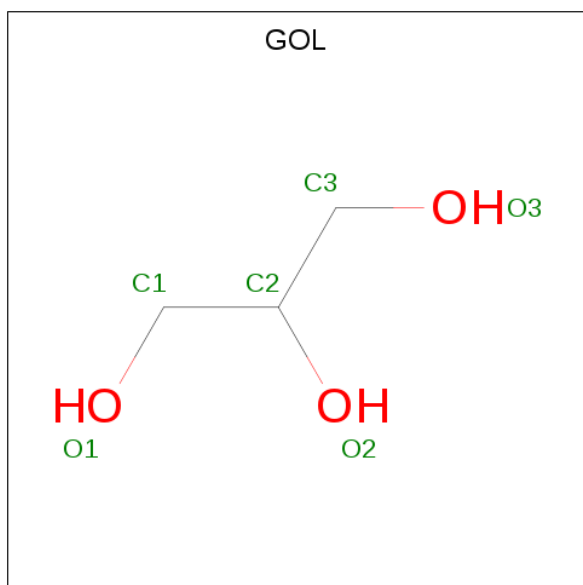
Mol	Chain	Residues	Atoms	ZeroOcc	AltConf
3	B	2	Total K 2 2	0	0
3	A	2	Total K 2 2	0	0
3	D	2	Total K 2 2	0	0
3	C	2	Total K 2 2	0	0

- Molecule 4 is 3-(benzoylamino)-N-oxobenzamide (three-letter code: UV4) (formula: C₁₄H₁₀N₂O₃).



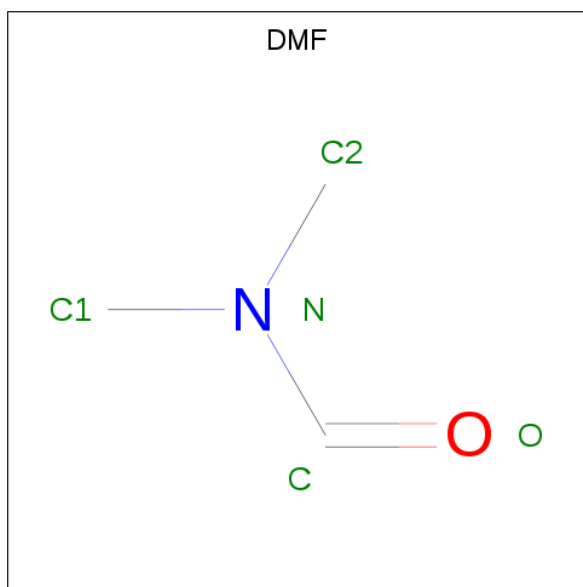
Mol	Chain	Residues	Atoms				ZeroOcc	AltConf
			Total	C	N	O		
4	A	1	19	14	2	3	0	0
4	B	1	19	14	2	3	0	0
4	C	1	19	14	2	3	0	0
4	D	1	19	14	2	3	0	0

- Molecule 5 is GLYCEROL (three-letter code: GOL) (formula: $C_3H_8O_3$).



Mol	Chain	Residues	Atoms			ZeroOcc	AltConf
5	A	1	Total	C	O	0	0
			6	3	3		
5	A	1	Total	C	O	0	0
			6	3	3		
5	B	1	Total	C	O	0	0
			6	3	3		
5	C	1	Total	C	O	0	0
			6	3	3		
5	C	1	Total	C	O	0	0
			6	3	3		
5	C	1	Total	C	O	0	0
			6	3	3		
5	D	1	Total	C	O	0	0
			6	3	3		
5	D	1	Total	C	O	0	0
			6	3	3		
5	D	1	Total	C	O	0	0
			6	3	3		

- Molecule 6 is DIMETHYLFORMAMIDE (three-letter code: DMF) (formula: C₃H₇NO).



Mol	Chain	Residues	Atoms				ZeroOcc	AltConf
6	B	1	Total	C	N	O	0	0
			5	3	1	1		
6	B	1	Total	C	N	O	0	0
			5	3	1	1		
6	C	1	Total	C	N	O	0	0
			5	3	1	1		

Continued on next page...

Continued from previous page...

Mol	Chain	Residues	Atoms				ZeroOcc	AltConf
6	C	1	Total	C	N	O	0	0
			5	3	1	1		
6	D	1	Total	C	N	O	0	0
			5	3	1	1		

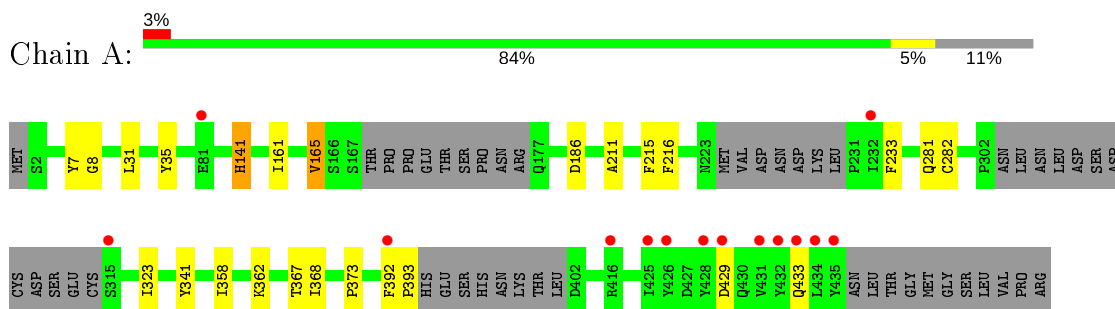
- Molecule 7 is water.

Mol	Chain	Residues	Atoms		ZeroOcc	AltConf
7	A	124	Total	O	0	0
			124	124		
7	B	145	Total	O	0	0
			145	145		
7	C	132	Total	O	0	0
			132	132		
7	D	115	Total	O	0	0
			115	115		

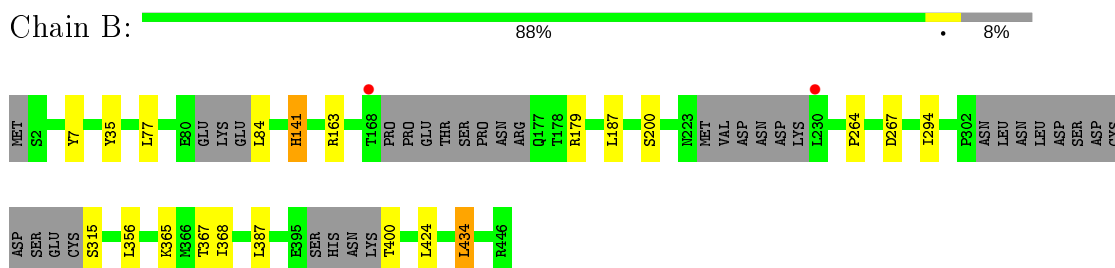
3 Residue-property plots [i](#)

These plots are drawn for all protein, RNA and DNA chains in the entry. The first graphic for a chain summarises the proportions of the various outlier classes displayed in the second graphic. The second graphic shows the sequence view annotated by issues in geometry and electron density. Residues are color-coded according to the number of geometric quality criteria for which they contain at least one outlier: green = 0, yellow = 1, orange = 2 and red = 3 or more. A red dot above a residue indicates a poor fit to the electron density ($RSRZ > 2$). Stretches of 2 or more consecutive residues without any outlier are shown as a green connector. Residues present in the sample, but not in the model, are shown in grey.

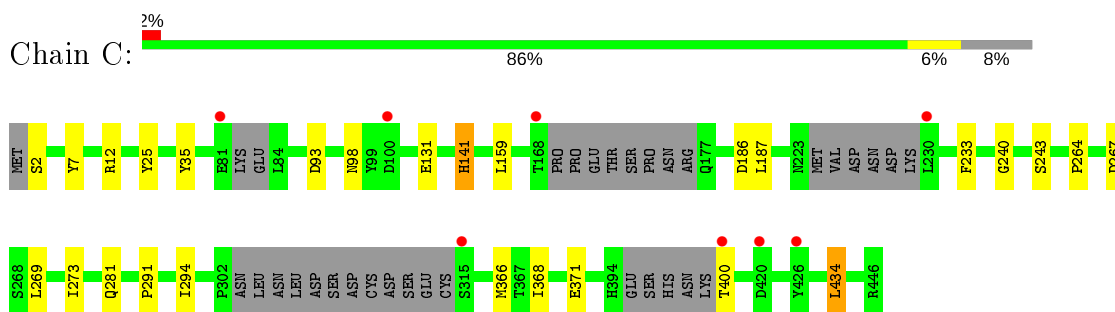
- Molecule 1: HISTONE DEACETYLASE 8



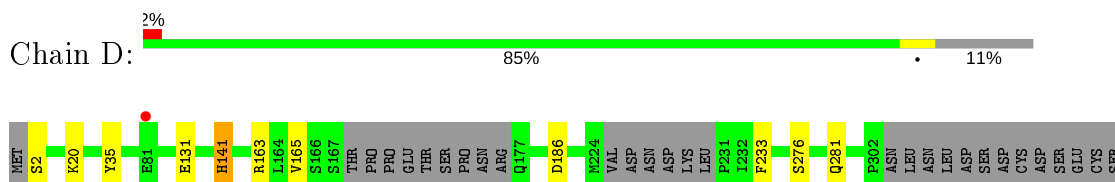
- Molecule 1: HISTONE DEACETYLASE 8



- Molecule 1: HISTONE DEACETYLASE 8



- Molecule 1: HISTONE DEACETYLASE 8





4 Data and refinement statistics

Property	Value	Source
Space group	P 1	Depositor
Cell constants a, b, c, α , β , γ	70.95Å 70.67Å 98.66Å 77.99° 75.41° 85.40°	Depositor
Resolution (Å)	42.15 – 2.20 49.92 – 2.20	Depositor EDS
% Data completeness (in resolution range)	96.0 (42.15-2.20) 96.0 (49.92-2.20)	Depositor EDS
R_{merge}	0.12	Depositor
R_{sym}	(Not available)	Depositor
$\langle I/\sigma(I) \rangle$ ¹	4.79 (at 2.20Å)	Xtrriage
Refinement program	PHENIX (PHENIX.REFINE)	Depositor
R, R_{free}	0.148 , 0.196 0.149 , 0.196	Depositor DCC
R_{free} test set	4527 reflections (5.11%)	wwPDB-VP
Wilson B-factor (Å ²)	23.9	Xtrriage
Anisotropy	0.277	Xtrriage
Bulk solvent k_{sol} (e/Å ³), B_{sol} (Å ²)	0.37 , 55.5	EDS
L-test for twinning ²	$\langle L \rangle = 0.50$, $\langle L^2 \rangle = 0.33$	Xtrriage
Estimated twinning fraction	0.085 for -k,-h,-l	Xtrriage
F_o, F_c correlation	0.96	EDS
Total number of atoms	13671	wwPDB-VP
Average B, all atoms (Å ²)	28.0	wwPDB-VP

Xtrriage's analysis on translational NCS is as follows: *The largest off-origin peak in the Patterson function is 4.95% of the height of the origin peak. No significant pseudotranslation is detected.*

¹Intensities estimated from amplitudes.

²Theoretical values of $\langle |L| \rangle$, $\langle L^2 \rangle$ for acentric reflections are 0.5, 0.333 respectively for untwinned datasets, and 0.375, 0.2 for perfectly twinned datasets.

5 Model quality [i](#)

5.1 Standard geometry [i](#)

Bond lengths and bond angles in the following residue types are not validated in this section: GOL, ZN, UV4, K, DMF

The Z score for a bond length (or angle) is the number of standard deviations the observed value is removed from the expected value. A bond length (or angle) with $|Z| > 5$ is considered an outlier worth inspection. RMSZ is the root-mean-square of all Z scores of the bond lengths (or angles).

Mol	Chain	Bond lengths		Bond angles	
		RMSZ	# Z >5	RMSZ	# Z >5
1	A	0.37	0/3295	0.49	0/4481
1	B	0.39	0/3390	0.50	1/4612 (0.0%)
1	C	0.38	0/3390	0.50	1/4612 (0.0%)
1	D	0.36	0/3291	0.47	0/4475
All	All	0.37	0/13366	0.49	2/18180 (0.0%)

There are no bond length outliers.

All (2) bond angle outliers are listed below:

Mol	Chain	Res	Type	Atoms	Z	Observed(°)	Ideal(°)
1	B	434	LEU	CA-CB-CG	5.31	127.51	115.30
1	C	434	LEU	CA-CB-CG	5.18	127.22	115.30

There are no chirality outliers.

There are no planarity outliers.

5.2 Too-close contacts [i](#)

In the following table, the Non-H and H(model) columns list the number of non-hydrogen atoms and hydrogen atoms in the chain respectively. The H(added) column lists the number of hydrogen atoms added and optimized by MolProbity. The Clashes column lists the number of clashes within the asymmetric unit, whereas Symm-Clashes lists symmetry related clashes.

Mol	Chain	Non-H	H(model)	H(added)	Clashes	Symm-Clashes
1	A	3198	0	3090	15	0
1	B	3298	0	3191	13	0
1	C	3295	0	3191	17	0
1	D	3197	0	3089	13	0
2	A	1	0	0	0	0

Continued on next page...

Continued from previous page...

Mol	Chain	Non-H	H(model)	H(added)	Clashes	Symm-Clashes
2	B	1	0	0	0	0
2	C	1	0	0	0	0
2	D	1	0	0	0	0
3	A	2	0	0	0	0
3	B	2	0	0	0	0
3	C	2	0	0	0	0
3	D	2	0	0	0	0
4	A	19	0	0	1	0
4	B	19	0	0	0	0
4	C	19	0	0	0	0
4	D	19	0	0	1	0
5	A	12	0	16	3	0
5	B	6	0	8	0	0
5	C	18	0	24	2	0
5	D	18	0	24	1	0
6	B	10	0	14	1	0
6	C	10	0	14	0	0
6	D	5	0	7	0	0
7	A	124	0	0	0	0
7	B	145	0	0	1	0
7	C	132	0	0	0	0
7	D	115	0	0	2	0
All	All	13671	0	12668	58	0

The all-atom clashscore is defined as the number of clashes found per 1000 atoms (including hydrogen atoms). The all-atom clashscore for this structure is 2.

All (58) close contacts within the same asymmetric unit are listed below, sorted by their clash magnitude.

Atom-1	Atom-2	Interatomic distance (Å)	Clash overlap (Å)
1:B:35:TYR:CE1	1:B:368:ILE:HG23	2.26	0.70
1:D:413:GLU:HG3	1:D:416:ARG:HH21	1.62	0.65
1:A:216:PHE:O	5:A:800:GOL:H32	1.99	0.62
1:D:382:GLY:O	7:D:2106:HOH:O	2.16	0.61
1:D:2:SER:N	1:D:131:GLU:OE2	2.35	0.59
1:C:35:TYR:CE1	1:C:368:ILE:HG23	2.38	0.58
1:A:429:ASP:O	1:A:433:GLN:HG2	2.04	0.57
1:D:429:ASP:O	1:D:433:GLN:HG2	2.06	0.56
1:C:187:LEU:HD21	1:C:294:ILE:HD12	1.89	0.55
1:A:341:TYR:OH	4:A:700:UV4:O06	2.20	0.53
1:C:25:TYR:HB2	5:C:801:GOL:H12	1.92	0.50

Continued on next page...

Continued from previous page...

Atom-1	Atom-2	Interatomic distance (Å)	Clash overlap (Å)
1:C:186:ASP:HB2	1:C:281:GLN:OE1	2.10	0.50
1:B:267:ASP:HB3	1:B:434:LEU:HD11	1.94	0.49
1:D:35:TYR:CZ	1:D:373:PRO:HD3	2.48	0.49
1:B:187:LEU:HD21	1:B:294:ILE:HD12	1.94	0.49
1:D:186:ASP:HB2	1:D:281:GLN:OE1	2.13	0.49
1:D:341:TYR:OH	4:D:700:UV4:O06	2.29	0.48
1:A:215:PHE:HD2	5:A:800:GOL:H31	1.78	0.48
1:C:2:SER:N	1:C:131:GLU:OE1	2.47	0.48
1:C:269:LEU:O	1:C:273:ILE:HG12	2.13	0.48
1:C:366:MET:SD	5:C:802:GOL:H32	2.53	0.48
1:A:35:TYR:CE1	1:A:368:ILE:HG23	2.50	0.46
1:B:365:LYS:HE3	1:B:367:THR:OG1	2.15	0.46
1:A:7[B]:TYR:CG	1:A:8:GLY:N	2.84	0.46
1:D:163:ARG:NH2	7:D:2067:HOH:O	2.28	0.45
1:C:35:TYR:CD1	1:C:368:ILE:HG23	2.51	0.45
1:B:77:LEU:HD13	1:B:84:LEU:HG	1.98	0.44
1:D:35:TYR:CD1	1:D:368:ILE:HG23	2.52	0.44
1:C:264:PRO:HA	1:C:434:LEU:HD21	1.99	0.44
1:B:368:ILE:HG21	1:B:387:LEU:HD22	1.99	0.44
1:D:20:LYS:HE2	1:D:341:TYR:HE1	1.82	0.44
1:A:211:ALA:HB1	5:A:800:GOL:H12	1.99	0.44
1:A:186:ASP:HB2	1:A:281:GLN:OE1	2.17	0.44
1:B:163:ARG:NH2	7:B:2063:HOH:O	2.43	0.44
1:C:141:HIS:H	1:C:141:HIS:CD2	2.35	0.44
1:D:141:HIS:CD2	1:D:141:HIS:H	2.36	0.43
1:A:35:TYR:CZ	1:A:373:PRO:HD3	2.52	0.43
1:A:358:ILE:HG23	1:A:362:LYS:HD3	2.01	0.43
1:A:161:ILE:O	1:A:165:VAL:HG22	2.18	0.43
1:B:141:HIS:CD2	1:B:141:HIS:H	2.35	0.43
1:B:315:SER:O	1:B:315:SER:OG	2.37	0.43
1:C:7[A]:TYR:OH	1:C:12:ARG:HD2	2.18	0.43
1:B:264:PRO:HA	1:B:434:LEU:HD21	2.01	0.43
1:B:368:ILE:HG21	1:B:387:LEU:CD2	2.48	0.42
1:D:35:TYR:CE1	1:D:368:ILE:HG23	2.53	0.42
1:D:427:ASP:OD2	1:D:430:GLN:N	2.38	0.42
1:A:31:LEU:HA	1:A:31:LEU:HD12	1.85	0.42
1:A:141:HIS:H	1:A:141:HIS:CD2	2.36	0.42
1:C:368:ILE:HD13	1:C:368:ILE:HG21	1.85	0.41
1:A:392:PHE:HA	1:A:393:PRO:HD2	1.98	0.41
1:C:159:LEU:HA	1:C:159:LEU:HD23	1.89	0.41
1:C:93:ASP:OD1	1:C:98:ASN:ND2	2.47	0.41

Continued on next page...

Continued from previous page...

Atom-1	Atom-2	Interatomic distance (Å)	Clash overlap (Å)
1:C:267:ASP:HB3	1:C:434:LEU:HD11	2.02	0.41
1:B:7[B]:TYR:CD2	6:B:900:DMF:H13	2.56	0.40
1:C:291:PRO:O	5:D:803:GOL:H2	2.21	0.40
1:C:240:GLY:O	1:C:243:SER:OG	2.40	0.40
1:A:282[B]:CYS:SG	1:A:323:ILE:HD11	2.62	0.40
1:B:179:ARG:NH2	1:B:424:LEU:HD21	2.37	0.40

There are no symmetry-related clashes.

5.3 Torsion angles [i](#)

5.3.1 Protein backbone [i](#)

In the following table, the Percentiles column shows the percent Ramachandran outliers of the chain as a percentile score with respect to all X-ray entries followed by that with respect to entries of similar resolution.

The Analysed column shows the number of residues for which the backbone conformation was analysed, and the total number of residues.

Mol	Chain	Analysed	Favoured	Allowed	Outliers	Percentiles	
1	A	390/446 (87%)	382 (98%)	8 (2%)	0	100	100
1	B	401/446 (90%)	396 (99%)	5 (1%)	0	100	100
1	C	401/446 (90%)	394 (98%)	7 (2%)	0	100	100
1	D	389/446 (87%)	385 (99%)	4 (1%)	0	100	100
All	All	1581/1784 (89%)	1557 (98%)	24 (2%)	0	100	100

There are no Ramachandran outliers to report.

5.3.2 Protein sidechains [i](#)

In the following table, the Percentiles column shows the percent sidechain outliers of the chain as a percentile score with respect to all X-ray entries followed by that with respect to entries of similar resolution.

The Analysed column shows the number of residues for which the sidechain conformation was analysed, and the total number of residues.

Mol	Chain	Analysed	Rotameric	Outliers	Percentiles	
1	A	347/391 (89%)	343 (99%)	4 (1%)	71	83
1	B	358/391 (92%)	354 (99%)	4 (1%)	73	85
1	C	358/391 (92%)	354 (99%)	4 (1%)	73	85
1	D	346/391 (88%)	341 (99%)	5 (1%)	67	80
All	All	1409/1564 (90%)	1392 (99%)	17 (1%)	71	83

All (17) residues with a non-rotameric sidechain are listed below:

Mol	Chain	Res	Type
1	A	141	HIS
1	A	165	VAL
1	A	233	PHE
1	A	367	THR
1	B	141	HIS
1	B	200	SER
1	B	356	LEU
1	B	400	THR
1	C	141	HIS
1	C	233	PHE
1	C	371	GLU
1	C	400	THR
1	D	141	HIS
1	D	165	VAL
1	D	233	PHE
1	D	276	SER
1	D	429	ASP

Some sidechains can be flipped to improve hydrogen bonding and reduce clashes. There are no such sidechains identified.

5.3.3 RNA [i](#)

There are no RNA molecules in this entry.

5.4 Non-standard residues in protein, DNA, RNA chains [i](#)

There are no non-standard protein/DNA/RNA residues in this entry.

5.5 Carbohydrates [i](#)

There are no carbohydrates in this entry.

5.6 Ligand geometry [i](#)

Of 30 ligands modelled in this entry, 12 are monoatomic - leaving 18 for Mogul analysis.

In the following table, the Counts columns list the number of bonds (or angles) for which Mogul statistics could be retrieved, the number of bonds (or angles) that are observed in the model and the number of bonds (or angles) that are defined in the Chemical Component Dictionary. The Link column lists molecule types, if any, to which the group is linked. The Z score for a bond length (or angle) is the number of standard deviations the observed value is removed from the expected value. A bond length (or angle) with $|Z| > 2$ is considered an outlier worth inspection. RMSZ is the root-mean-square of all Z scores of the bond lengths (or angles).

Mol	Type	Chain	Res	Link	Bond lengths			Bond angles		
					Counts	RMSZ	# Z > 2	Counts	RMSZ	# Z > 2
5	GOL	D	803	-	5,5,5	0.82	0	5,5,5	1.37	0
6	DMF	B	900	-	4,4,4	0.65	0	4,4,4	0.45	0
6	DMF	D	901	-	4,4,4	0.65	0	4,4,4	0.53	0
6	DMF	C	900	-	4,4,4	0.70	0	4,4,4	0.36	0
6	DMF	C	901	-	4,4,4	0.63	0	4,4,4	0.59	0
5	GOL	A	801	-	5,5,5	0.79	0	5,5,5	0.88	0
4	UV4	C	700	2	20,20,20	0.90	1 (5%)	24,26,26	0.93	1 (4%)
5	GOL	C	801	-	5,5,5	0.66	0	5,5,5	1.60	1 (20%)
4	UV4	A	700	2	20,20,20	0.85	1 (5%)	24,26,26	0.99	3 (12%)
5	GOL	D	800	-	5,5,5	0.81	0	5,5,5	1.18	0
4	UV4	D	700	2	20,20,20	0.89	1 (5%)	24,26,26	0.94	1 (4%)
5	GOL	A	800	-	5,5,5	1.00	1 (20%)	5,5,5	2.12	2 (40%)
5	GOL	C	800	-	5,5,5	0.67	0	5,5,5	1.41	0
5	GOL	D	801	-	5,5,5	0.88	0	5,5,5	0.76	0
6	DMF	B	901	-	4,4,4	0.63	0	4,4,4	0.49	0
4	UV4	B	700	2	20,20,20	0.83	1 (5%)	24,26,26	1.25	3 (12%)
5	GOL	C	802	-	5,5,5	0.67	0	5,5,5	1.10	0
5	GOL	B	801	-	5,5,5	0.72	0	5,5,5	1.06	0

In the following table, the Chirals column lists the number of chiral outliers, the number of chiral centers analysed, the number of these observed in the model and the number defined in the Chemical Component Dictionary. Similar counts are reported in the Torsion and Rings columns. '-' means no outliers of that kind were identified.

Mol	Type	Chain	Res	Link	Chirals	Torsions	Rings
5	GOL	D	803	-	-	4/4/4/4	-
6	DMF	B	900	-	-	0/2/2/2	-
6	DMF	D	901	-	-	0/2/2/2	-
6	DMF	C	900	-	-	0/2/2/2	-
6	DMF	C	901	-	-	0/2/2/2	-
5	GOL	A	801	-	-	0/4/4/4	-
4	UV4	C	700	2	-	2/12/14/14	0/2/2/2
5	GOL	C	801	-	-	2/4/4/4	-
4	UV4	A	700	2	-	2/12/14/14	0/2/2/2
5	GOL	D	800	-	-	4/4/4/4	-
4	UV4	D	700	2	-	2/12/14/14	0/2/2/2
5	GOL	A	800	-	-	2/4/4/4	-
5	GOL	C	800	-	-	1/4/4/4	-
5	GOL	D	801	-	-	0/4/4/4	-
6	DMF	B	901	-	-	0/2/2/2	-
4	UV4	B	700	2	-	6/12/14/14	0/2/2/2
5	GOL	C	802	-	-	2/4/4/4	-
5	GOL	B	801	-	-	0/4/4/4	-

All (5) bond length outliers are listed below:

Mol	Chain	Res	Type	Atoms	Z	Observed(Å)	Ideal(Å)
4	D	700	UV4	C10-N11	-2.59	1.36	1.41
4	A	700	UV4	C10-N11	-2.51	1.36	1.41
4	C	700	UV4	C10-N11	-2.33	1.36	1.41
5	A	800	GOL	O2-C2	-2.13	1.37	1.43
4	B	700	UV4	C10-N11	-2.02	1.37	1.41

All (11) bond angle outliers are listed below:

Mol	Chain	Res	Type	Atoms	Z	Observed(°)	Ideal(°)
4	B	700	UV4	C04-C05-N07	4.18	121.60	114.19
4	D	700	UV4	C04-C05-N07	3.30	120.03	114.19
4	C	700	UV4	C04-C05-N07	3.26	119.97	114.19
4	A	700	UV4	C04-C05-N07	3.15	119.77	114.19
5	A	800	GOL	O1-C1-C2	3.05	124.81	110.20
5	A	800	GOL	O3-C3-C2	2.79	123.58	110.20
5	C	801	GOL	O3-C3-C2	2.23	120.91	110.20
4	A	700	UV4	C14-C12-N11	2.19	120.74	115.92
4	B	700	UV4	O13-C12-C14	-2.13	117.14	120.94
4	B	700	UV4	C14-C12-N11	2.10	120.54	115.92

Continued on next page...

Continued from previous page...

Mol	Chain	Res	Type	Atoms	Z	Observed(°)	Ideal(°)
4	A	700	UV4	O13-C12-C14	-2.06	117.26	120.94

There are no chirality outliers.

All (27) torsion outliers are listed below:

Mol	Chain	Res	Type	Atoms
5	D	803	GOL	C1-C2-C3-O3
5	C	802	GOL	O1-C1-C2-O2
5	C	802	GOL	O1-C1-C2-C3
5	D	800	GOL	O1-C1-C2-C3
5	D	800	GOL	C1-C2-C3-O3
5	A	800	GOL	O1-C1-C2-C3
4	D	700	UV4	C09-C10-N11-C12
4	A	700	UV4	C09-C10-N11-C12
4	D	700	UV4	C01-C10-N11-C12
4	A	700	UV4	C01-C10-N11-C12
5	D	800	GOL	O1-C1-C2-O2
4	C	700	UV4	C01-C10-N11-C12
4	C	700	UV4	C09-C10-N11-C12
5	C	801	GOL	C1-C2-C3-O3
5	D	800	GOL	O2-C2-C3-O3
5	A	800	GOL	O1-C1-C2-O2
4	B	700	UV4	O13-C12-C14-C15
4	B	700	UV4	N11-C12-C14-C15
4	B	700	UV4	C09-C10-N11-C12
4	B	700	UV4	O13-C12-C14-C19
4	B	700	UV4	C01-C10-N11-C12
5	D	803	GOL	O1-C1-C2-O2
4	B	700	UV4	N11-C12-C14-C19
5	D	803	GOL	O2-C2-C3-O3
5	C	801	GOL	O1-C1-C2-O2
5	D	803	GOL	O1-C1-C2-C3
5	C	800	GOL	C1-C2-C3-O3

There are no ring outliers.

7 monomers are involved in 9 short contacts:

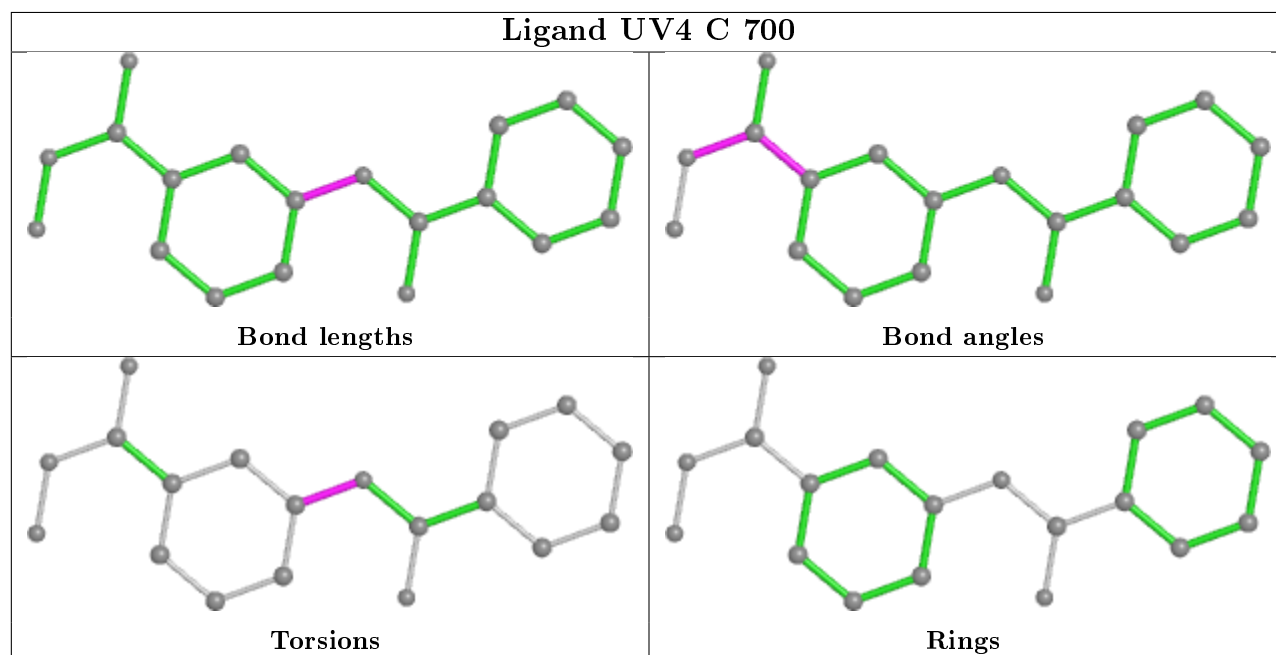
Mol	Chain	Res	Type	Clashes	Symm-Clashes
5	D	803	GOL	1	0
6	B	900	DMF	1	0
5	C	801	GOL	1	0

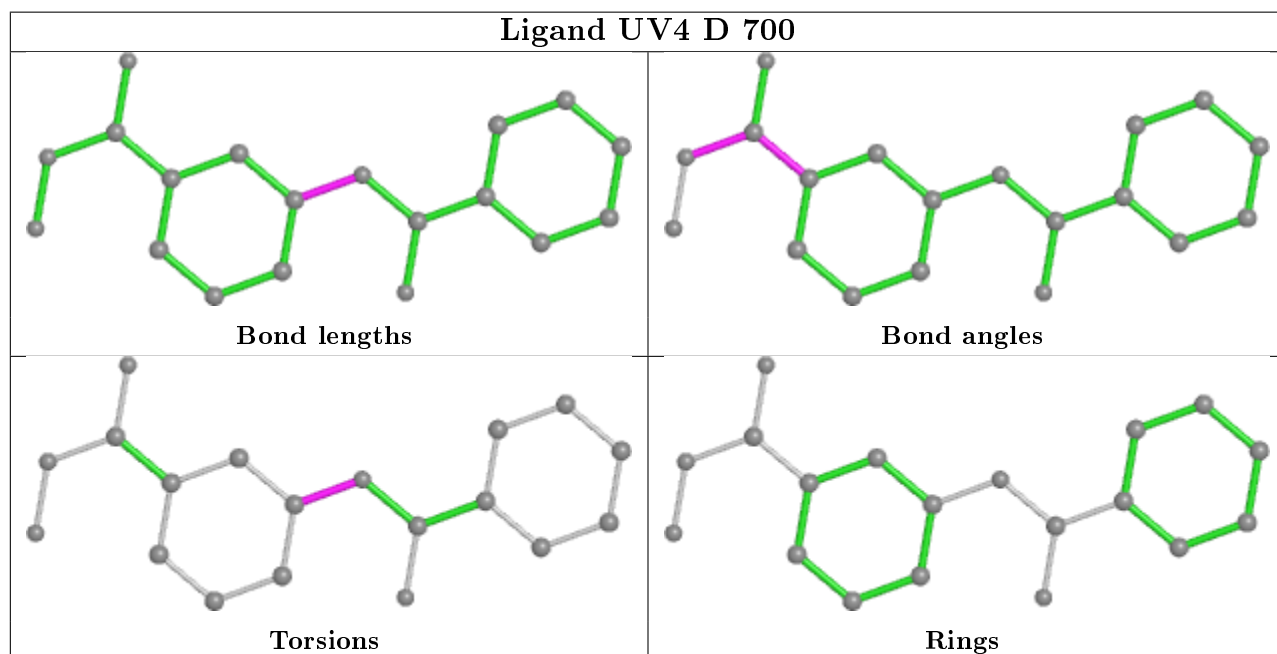
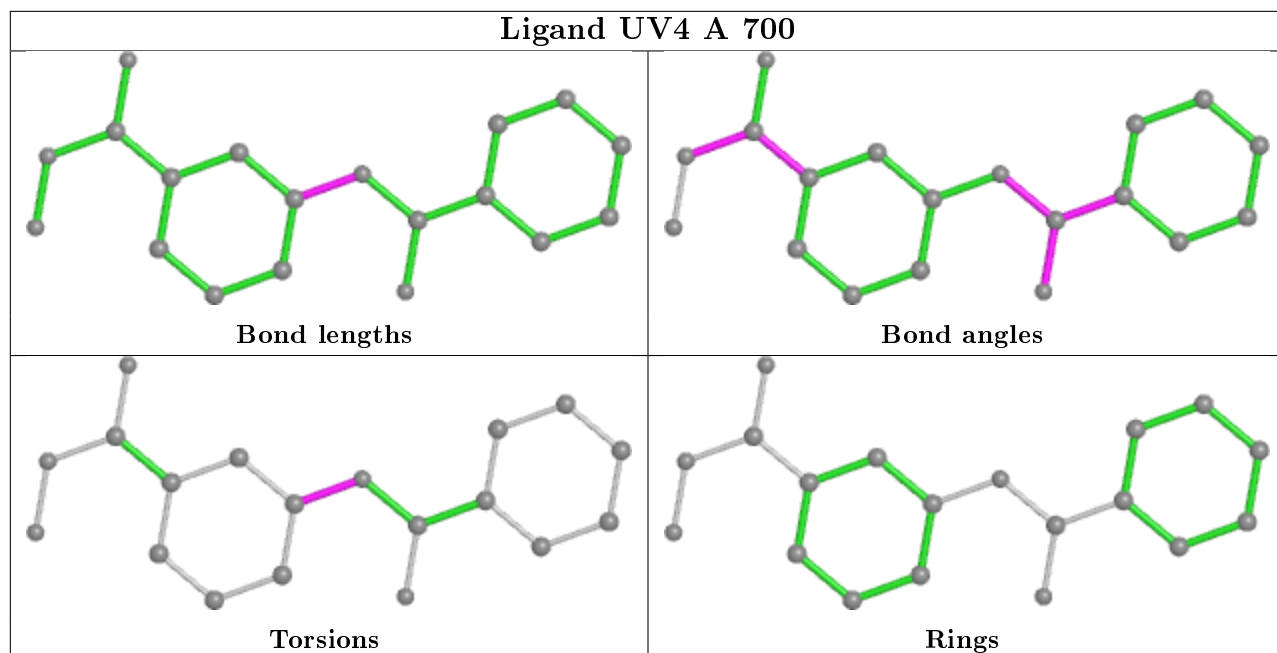
Continued on next page...

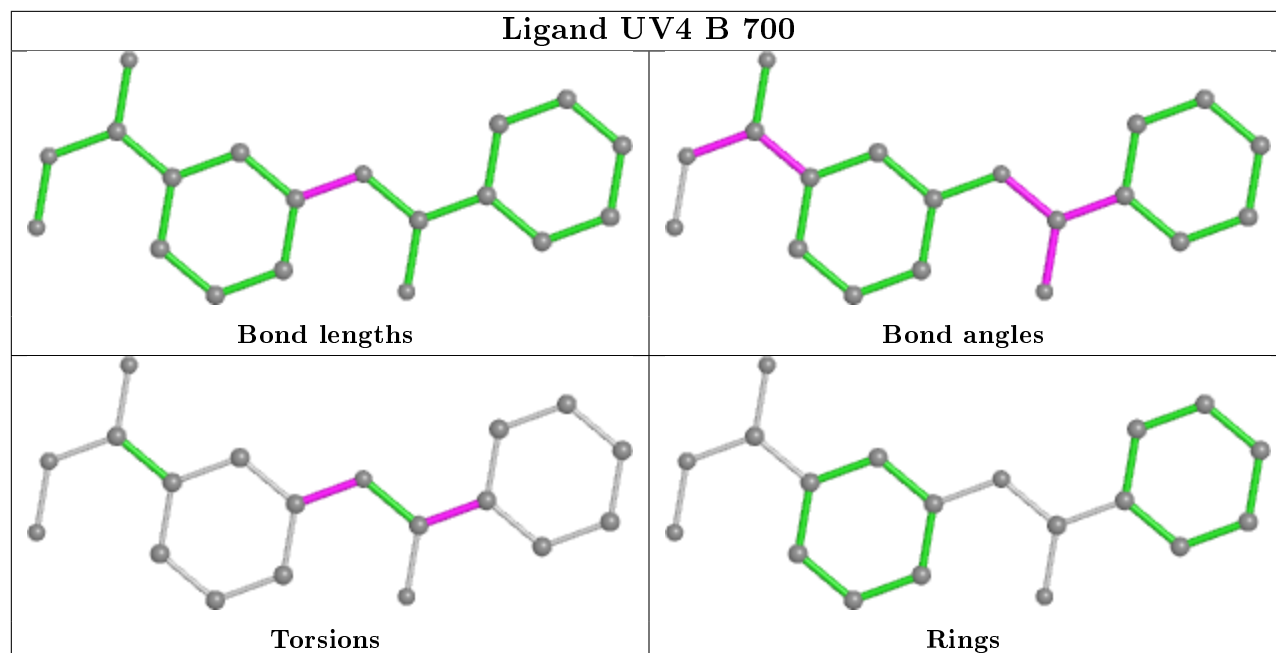
Continued from previous page...

Mol	Chain	Res	Type	Clashes	Symm-Clashes
4	A	700	UV4	1	0
4	D	700	UV4	1	0
5	A	800	GOL	3	0
5	C	802	GOL	1	0

The following is a two-dimensional graphical depiction of Mogul quality analysis of bond lengths, bond angles, torsion angles, and ring geometry for all instances of the Ligand of Interest. In addition, ligands with molecular weight > 250 and outliers as shown on the validation Tables will also be included. For torsion angles, if less than 5% of the Mogul distribution of torsion angles is within 10 degrees of the torsion angle in question, then that torsion angle is considered an outlier. Any bond that is central to one or more torsion angles identified as an outlier by Mogul will be highlighted in the graph. For rings, the root-mean-square deviation (RMSD) between the ring in question and similar rings identified by Mogul is calculated over all ring torsion angles. If the average RMSD is greater than 60 degrees and the minimal RMSD between the ring in question and any Mogul-identified rings is also greater than 60 degrees, then that ring is considered an outlier. The outliers are highlighted in purple. The color gray indicates Mogul did not find sufficient equivalents in the CSD to analyse the geometry.







5.7 Other polymers [i](#)

There are no such residues in this entry.

5.8 Polymer linkage issues [i](#)

There are no chain breaks in this entry.

6 Fit of model and data

6.1 Protein, DNA and RNA chains

In the following table, the column labelled ‘#RSRZ> 2’ contains the number (and percentage) of RSRZ outliers, followed by percent RSRZ outliers for the chain as percentile scores relative to all X-ray entries and entries of similar resolution. The OWAB column contains the minimum, median, 95th percentile and maximum values of the occupancy-weighted average B-factor per residue. The column labelled ‘Q< 0.9’ lists the number of (and percentage) of residues with an average occupancy less than 0.9.

Mol	Chain	Analysed	<RSRZ>	#RSRZ>2	OWAB(Å ²)	Q<0.9
1	A	398/446 (89%)	-0.08	14 (3%) 44 42	15, 24, 57, 87	0
1	B	412/446 (92%)	-0.27	2 (0%) 91 90	12, 22, 45, 77	0
1	C	412/446 (92%)	-0.19	8 (1%) 66 65	13, 23, 47, 92	0
1	D	398/446 (89%)	-0.12	9 (2%) 60 58	15, 26, 59, 98	0
All	All	1620/1784 (90%)	-0.16	33 (2%) 65 63	12, 24, 51, 98	0

All (33) RSRZ outliers are listed below:

Mol	Chain	Res	Type	RSRZ
1	A	434	LEU	7.7
1	A	435	TYR	7.3
1	A	425	ILE	7.3
1	D	425	ILE	7.3
1	A	432	TYR	7.0
1	D	435	TYR	4.8
1	A	392	PHE	4.6
1	C	230	LEU	4.4
1	D	392	PHE	4.3
1	B	168	THR	4.0
1	A	428	TYR	3.9
1	D	426	TYR	3.9
1	B	230	LEU	3.8
1	D	434	LEU	3.7
1	A	433	GLN	3.6
1	D	81	GLU	3.5
1	D	428	TYR	3.4
1	D	432	TYR	3.2
1	A	426	TYR	3.2
1	A	431	VAL	3.1
1	A	429	ASP	2.8

Continued on next page...

Continued from previous page...

Mol	Chain	Res	Type	RSRZ
1	C	168	THR	2.7
1	C	81	GLU	2.6
1	C	420	ASP	2.6
1	C	426	TYR	2.5
1	A	81	GLU	2.4
1	C	400	THR	2.4
1	C	100	ASP	2.2
1	A	315	SER	2.2
1	C	315	SER	2.1
1	D	429	ASP	2.1
1	A	232	ILE	2.1
1	A	416	ARG	2.0

6.2 Non-standard residues in protein, DNA, RNA chains [i](#)

There are no non-standard protein/DNA/RNA residues in this entry.

6.3 Carbohydrates [i](#)

There are no carbohydrates in this entry.

6.4 Ligands [i](#)

In the following table, the Atoms column lists the number of modelled atoms in the group and the number defined in the chemical component dictionary. The B-factors column lists the minimum, median, 95th percentile and maximum values of B factors of atoms in the group. The column labelled 'Q< 0.9' lists the number of atoms with occupancy less than 0.9.

Mol	Type	Chain	Res	Atoms	RSCC	RSR	B-factors(Å ²)	Q<0.9
5	GOL	D	803	6/6	0.82	0.38	65,69,70,73	0
5	GOL	C	801	6/6	0.84	0.28	42,49,52,54	0
6	DMF	C	900	5/5	0.86	0.16	43,51,53,54	0
5	GOL	C	802	6/6	0.88	0.17	32,40,42,55	0
4	UV4	D	700	19/19	0.89	0.19	33,46,52,57	0
4	UV4	B	700	19/19	0.90	0.18	30,39,52,57	0
4	UV4	A	700	19/19	0.90	0.16	36,49,52,54	0
5	GOL	C	800	6/6	0.91	0.13	30,37,41,42	0
5	GOL	A	800	6/6	0.91	0.29	19,22,35,37	0
4	UV4	C	700	19/19	0.92	0.17	27,38,42,49	0
5	GOL	D	800	6/6	0.92	0.17	36,45,47,48	0

Continued on next page...

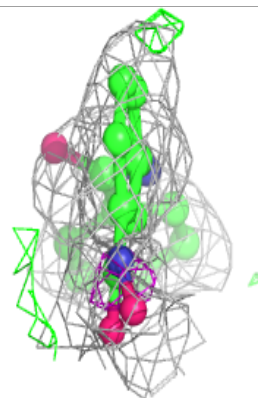
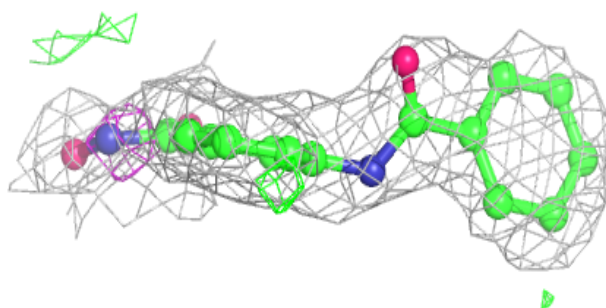
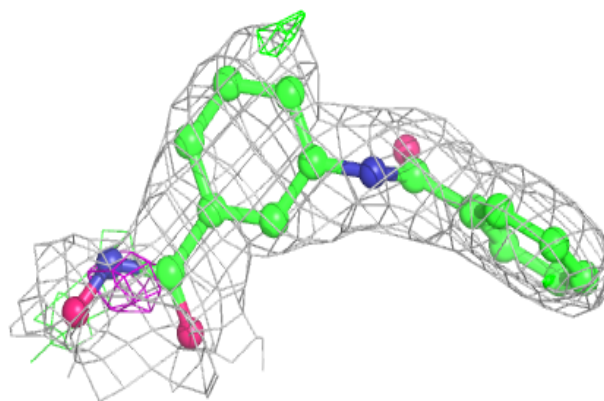
Continued from previous page...

Mol	Type	Chain	Res	Atoms	RSCC	RSR	B-factors(Å ²)	Q<0.9
5	GOL	D	801	6/6	0.92	0.15	26,34,37,40	0
6	DMF	B	900	5/5	0.94	0.13	38,44,48,52	0
6	DMF	D	901	5/5	0.95	0.18	44,49,50,54	0
6	DMF	C	901	5/5	0.96	0.18	32,36,40,56	0
6	DMF	B	901	5/5	0.96	0.13	36,38,40,47	0
5	GOL	A	801	6/6	0.96	0.14	27,38,38,44	0
5	GOL	B	801	6/6	0.97	0.09	30,31,32,32	0
3	K	A	601	1/1	0.99	0.04	20,20,20,20	0
2	ZN	A	500	1/1	1.00	0.10	24,24,24,24	0
3	K	B	601	1/1	1.00	0.07	17,17,17,17	0
3	K	D	600	1/1	1.00	0.08	16,16,16,16	0
3	K	C	601	1/1	1.00	0.07	19,19,19,19	0
3	K	D	601	1/1	1.00	0.08	20,20,20,20	0
3	K	B	600	1/1	1.00	0.07	16,16,16,16	0
3	K	C	600	1/1	1.00	0.06	14,14,14,14	0
2	ZN	B	500	1/1	1.00	0.08	20,20,20,20	0
2	ZN	D	500	1/1	1.00	0.08	24,24,24,24	0
3	K	A	600	1/1	1.00	0.09	17,17,17,17	0
2	ZN	C	500	1/1	1.00	0.08	21,21,21,21	0

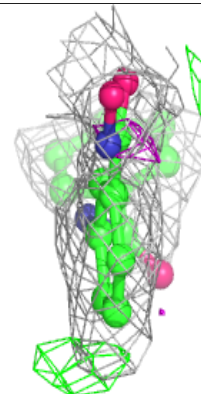
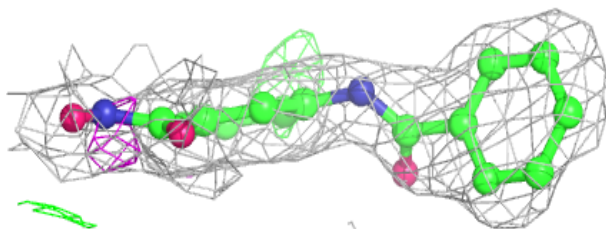
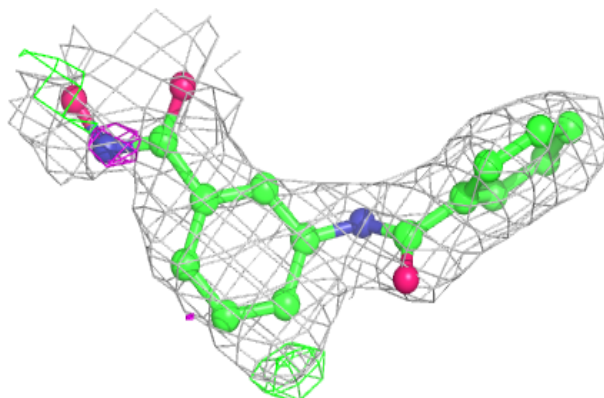
The following is a graphical depiction of the model fit to experimental electron density of all instances of the Ligand of Interest. In addition, ligands with molecular weight > 250 and outliers as shown on the geometry validation Tables will also be included. Each fit is shown from different orientation to approximate a three-dimensional view.

Electron density around UV4 D 700:

$2mF_o-DF_c$ (at 0.7 rmsd) in gray
 mF_o-DF_c (at 3 rmsd) in purple (negative)
and green (positive)

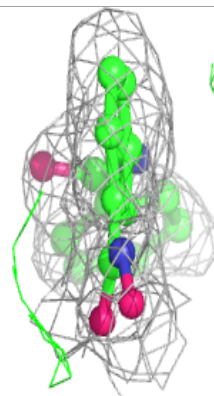
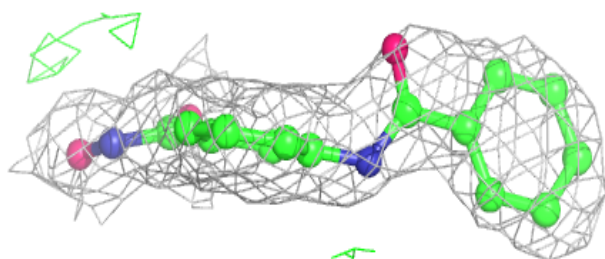
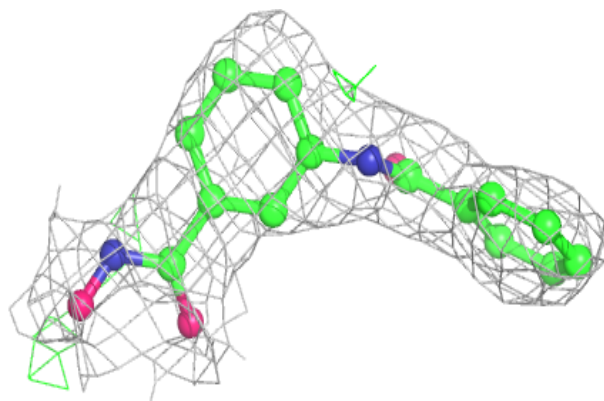
**Electron density around UV4 B 700:**

$2mF_o-DF_c$ (at 0.7 rmsd) in gray
 mF_o-DF_c (at 3 rmsd) in purple (negative)
and green (positive)

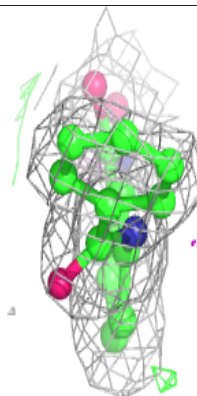
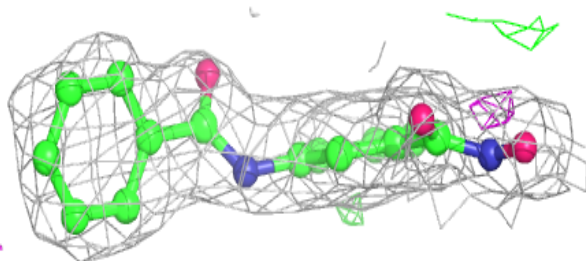
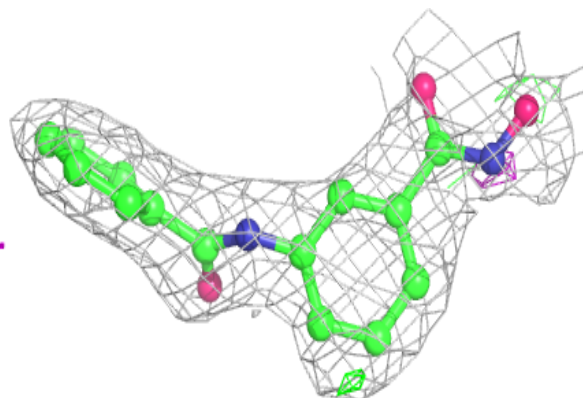


Electron density around UV4 A 700:

$2mF_o-DF_c$ (at 0.7 rmsd) in gray
 mF_o-DF_c (at 3 rmsd) in purple (negative)
and green (positive)

**Electron density around UV4 C 700:**

$2mF_o-DF_c$ (at 0.7 rmsd) in gray
 mF_o-DF_c (at 3 rmsd) in purple (negative)
and green (positive)



6.5 Other polymers

There are no such residues in this entry.