



# Full wwPDB X-ray Structure Validation Report ⓘ

Jan 2, 2024 – 12:41 pm GMT

PDB ID : 5FPQ  
Title : Structure of Homo sapiens acetylcholinesterase phosphonylated by sarin.  
Authors : Allgardsson, A.; Berg, L.; Akfur, C.; Hornberg, A.; Worek, F.; Linusson, A.; Ekstrom, F.  
Deposited on : 2015-12-02  
Resolution : 2.40 Å(reported)

This is a Full wwPDB X-ray Structure Validation Report for a publicly released PDB entry.

We welcome your comments at [validation@mail.wwpdb.org](mailto:validation@mail.wwpdb.org)

A user guide is available at

<https://www.wwpdb.org/validation/2017/XrayValidationReportHelp>

with specific help available everywhere you see the ⓘ symbol.

The types of validation reports are described at

<http://www.wwpdb.org/validation/2017/FAQs#types>.

---

The following versions of software and data (see [references ⓘ](#)) were used in the production of this report:

MolProbity : 4.02b-467  
Mogul : 1.8.4, CSD as541be (2020)  
Xtriage (Phenix) : 1.13  
EDS : 2.36  
Percentile statistics : 20191225.v01 (using entries in the PDB archive December 25th 2019)  
Refmac : 5.8.0158  
CCP4 : 7.0.044 (Gargrove)  
Ideal geometry (proteins) : Engh & Huber (2001)  
Ideal geometry (DNA, RNA) : Parkinson et al. (1996)  
Validation Pipeline (wwPDB-VP) : 2.36

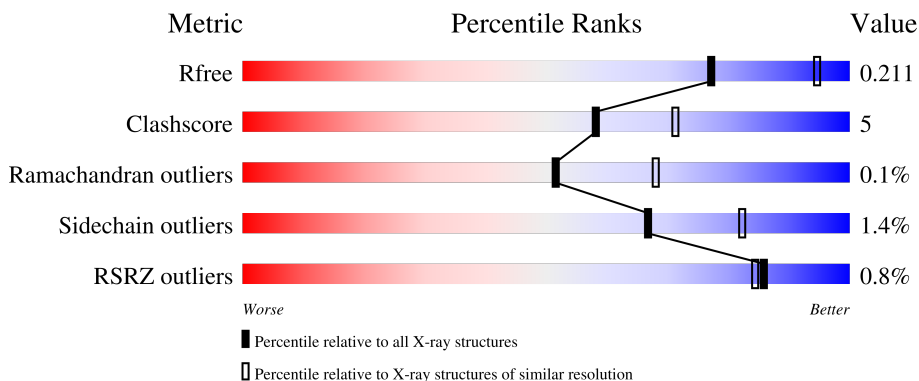
# 1 Overall quality at a glance

The following experimental techniques were used to determine the structure:

*X-RAY DIFFRACTION*


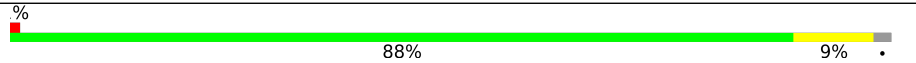
The reported resolution of this entry is 2.40 Å.

Percentile scores (ranging between 0-100) for global validation metrics of the entry are shown in the following graphic. The table shows the number of entries on which the scores are based.



Metric	Whole archive (#Entries)	Similar resolution (#Entries, resolution range(Å))
$R_{free}$	130704	3907 (2.40-2.40)
Clashscore	141614	4398 (2.40-2.40)
Ramachandran outliers	138981	4318 (2.40-2.40)
Sidechain outliers	138945	4319 (2.40-2.40)
RSRZ outliers	127900	3811 (2.40-2.40)

The table below summarises the geometric issues observed across the polymeric chains and their fit to the electron density. The red, orange, yellow and green segments of the lower bar indicate the fraction of residues that contain outliers for  $\geq 3$ , 2, 1 and 0 types of geometric quality criteria respectively. A grey segment represents the fraction of residues that are not modelled. The numeric value for each fraction is indicated below the corresponding segment, with a dot representing fractions  $\leq 5\%$ . The upper red bar (where present) indicates the fraction of residues that have poor fit to the electron density. The numeric value is given above the bar.

Mol	Chain	Length	Quality of chain
1	A	542	 86% 12% ..
1	B	542	 88% 9% .

## 2 Entry composition [i](#)

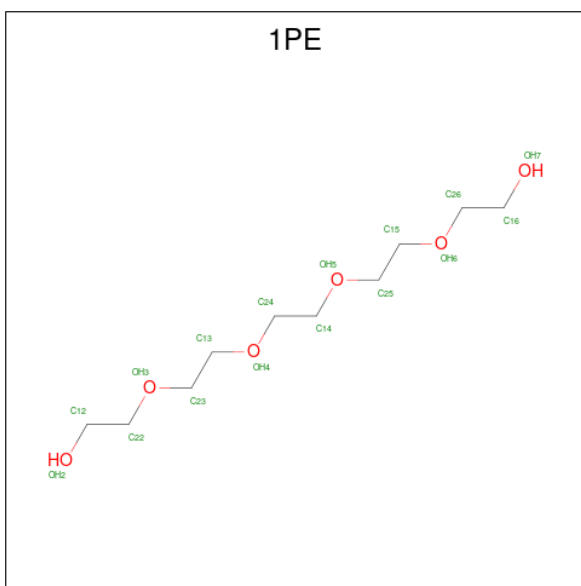
There are 3 unique types of molecules in this entry. The entry contains 8551 atoms, of which 22 are hydrogens and 0 are deuteriums.

In the tables below, the ZeroOcc column contains the number of atoms modelled with zero occupancy, the AltConf column contains the number of residues with at least one atom in alternate conformation and the Trace column contains the number of residues modelled with at most 2 atoms.

- Molecule 1 is a protein called ACETYLCHOLINESTERASE.

Mol	Chain	Residues	Atoms					ZeroOcc	AltConf	Trace	
			Total	C	N	O	P				S
1	A	532	Total	C	N	O	P	S	0	6	0
			4204	2692	739	759	1	13			
1	B	530	Total	C	N	O	P	S	0	6	0
			4196	2688	737	757	1	13			

- Molecule 2 is PENTAETHYLENE GLYCOL (three-letter code: 1PE) (formula: C<sub>10</sub>H<sub>22</sub>O<sub>6</sub>).



Mol	Chain	Residues	Atoms				ZeroOcc	AltConf
			Total	C	H	O		
2	A	1	Total	C	H	O	0	0
			38	10	22	6		

- Molecule 3 is water.

Mol	Chain	Residues	Atoms	ZeroOcc	AltConf
3	A	54	Total	0	0
			54		

*Continued on next page...*

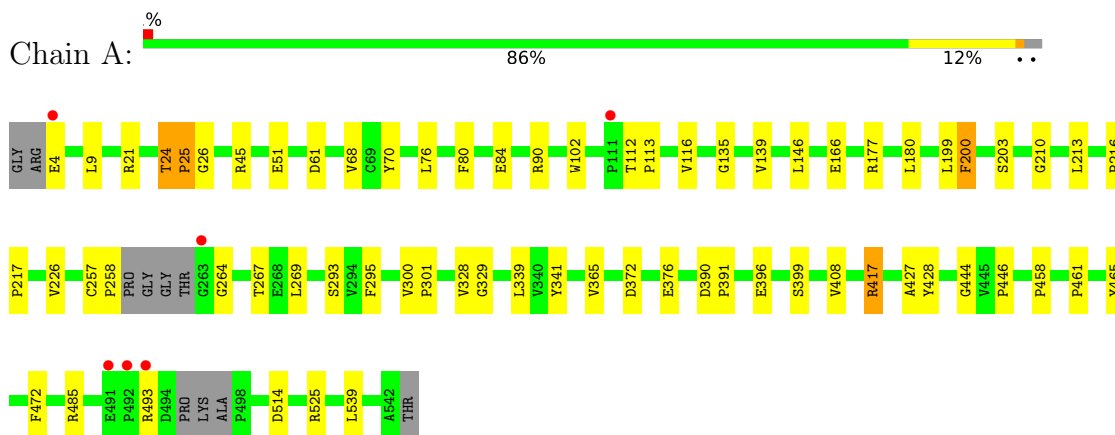
*Continued from previous page...*

<b>Mol</b>	<b>Chain</b>	<b>Residues</b>	<b>Atoms</b>		<b>ZeroOcc</b>	<b>AltConf</b>
3	B	59	Total	O	0	0
			59	59		

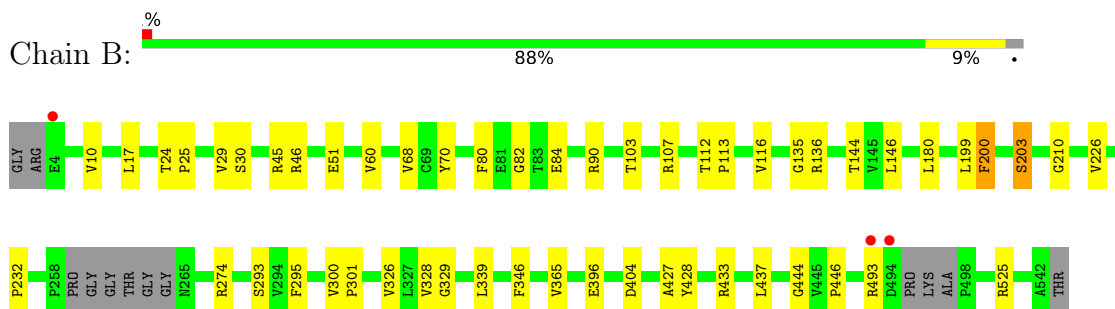
### 3 Residue-property plots [i](#)

These plots are drawn for all protein, RNA, DNA and oligosaccharide chains in the entry. The first graphic for a chain summarises the proportions of the various outlier classes displayed in the second graphic. The second graphic shows the sequence view annotated by issues in geometry and electron density. Residues are color-coded according to the number of geometric quality criteria for which they contain at least one outlier: green = 0, yellow = 1, orange = 2 and red = 3 or more. A red dot above a residue indicates a poor fit to the electron density ( $RSRZ > 2$ ). Stretches of 2 or more consecutive residues without any outlier are shown as a green connector. Residues present in the sample, but not in the model, are shown in grey.

#### • Molecule 1: ACETYLCHOLINESTERASE



#### • Molecule 1: ACETYLCHOLINESTERASE



## 4 Data and refinement statistics i

Property	Value	Source
Space group	P 31 2 1	Depositor
Cell constants a, b, c, $\alpha$ , $\beta$ , $\gamma$	104.87Å 104.87Å 323.25Å 90.00° 90.00° 120.00°	Depositor
Resolution (Å)	45.41 – 2.40 45.41 – 2.40	Depositor EDS
% Data completeness (in resolution range)	99.4 (45.41-2.40) 99.4 (45.41-2.40)	Depositor EDS
$R_{merge}$	0.10	Depositor
$R_{sym}$	(Not available)	Depositor
$\langle I/\sigma(I) \rangle$ <sup>1</sup>	3.46 (at 2.39Å)	Xtrriage
Refinement program	PHENIX (PHENIX.REFINE)	Depositor
R, $R_{free}$	0.177 , 0.210 0.177 , 0.211	Depositor DCC
$R_{free}$ test set	4144 reflections (5.10%)	wwPDB-VP
Wilson B-factor (Å <sup>2</sup> )	32.7	Xtrriage
Anisotropy	0.079	Xtrriage
Bulk solvent $k_{sol}$ (e/Å <sup>3</sup> ), $B_{sol}$ (Å <sup>2</sup> )	0.35 , 35.9	EDS
L-test for twinning <sup>2</sup>	$\langle  L  \rangle = 0.47$ , $\langle L^2 \rangle = 0.30$	Xtrriage
Estimated twinning fraction	0.033 for -h,-k,l	Xtrriage
$F_o, F_c$ correlation	0.94	EDS
Total number of atoms	8551	wwPDB-VP
Average B, all atoms (Å <sup>2</sup> )	34.0	wwPDB-VP

Xtrriage's analysis on translational NCS is as follows: *The largest off-origin peak in the Patterson function is 2.17% of the height of the origin peak. No significant pseudotranslation is detected.*

<sup>1</sup>Intensities estimated from amplitudes.

<sup>2</sup>Theoretical values of  $\langle |L| \rangle$ ,  $\langle L^2 \rangle$  for acentric reflections are 0.5, 0.333 respectively for untwinned datasets, and 0.375, 0.2 for perfectly twinned datasets.

## 5 Model quality [i](#)

### 5.1 Standard geometry [i](#)

Bond lengths and bond angles in the following residue types are not validated in this section: 1PE, SGB

The Z score for a bond length (or angle) is the number of standard deviations the observed value is removed from the expected value. A bond length (or angle) with  $|Z| > 5$  is considered an outlier worth inspection. RMSZ is the root-mean-square of all Z scores of the bond lengths (or angles).

Mol	Chain	Bond lengths		Bond angles	
		RMSZ	# Z  >5	RMSZ	# Z  >5
1	A	0.38	0/4316	0.54	0/5893
1	B	0.39	0/4308	0.54	0/5883
All	All	0.39	0/8624	0.54	0/11776

Chiral center outliers are detected by calculating the chiral volume of a chiral center and verifying if the center is modelled as a planar moiety or with the opposite hand. A planarity outlier is detected by checking planarity of atoms in a peptide group, atoms in a mainchain group or atoms of a sidechain that are expected to be planar.

Mol	Chain	#Chirality outliers	#Planarity outliers
1	A	0	1

There are no bond length outliers.

There are no bond angle outliers.

There are no chirality outliers.

All (1) planarity outliers are listed below:

Mol	Chain	Res	Type	Group
1	A	264	GLY	Peptide

### 5.2 Too-close contacts [i](#)

In the following table, the Non-H and H(model) columns list the number of non-hydrogen atoms and hydrogen atoms in the chain respectively. The H(added) column lists the number of hydrogen atoms added and optimized by MolProbity. The Clashes column lists the number of clashes within the asymmetric unit, whereas Symm-Clashes lists symmetry-related clashes.

Mol	Chain	Non-H	H(model)	H(added)	Clashes	Symm-Clashes
1	A	4204	0	4073	43	0
1	B	4196	0	4067	35	0
2	A	16	22	22	2	0
3	A	54	0	0	3	0
3	B	59	0	0	0	0
All	All	8529	22	8162	80	0

The all-atom clashscore is defined as the number of clashes found per 1000 atoms (including hydrogen atoms). The all-atom clashscore for this structure is 5.

All (80) close contacts within the same asymmetric unit are listed below, sorted by their clash magnitude.

Atom-1	Atom-2	Interatomic distance (Å)	Clash overlap (Å)
1:B:180:LEU:HD21	1:B:199:LEU:HD21	1.59	0.82
1:B:45:ARG:HH12	1:B:51:GLU:HG3	1.58	0.67
1:B:30:SER:HB2	1:B:103:THR:HG22	1.76	0.66
1:A:180:LEU:HD21	1:A:199:LEU:HD21	1.79	0.65
1:A:45:ARG:NH1	1:A:51:GLU:HG3	2.12	0.64
1:B:200:PHE:CB	1:B:226:VAL:HB	2.28	0.64
1:A:113:PRO:HG3	1:A:485:ARG:HG2	1.80	0.63
2:A:1543:1PE:OH5	3:A:2041:HOH:O	2.16	0.62
1:B:116:VAL:HB	1:B:199:LEU:HD23	1.82	0.61
1:B:135:GLY:HA3	1:B:146:LEU:HD23	1.82	0.60
1:A:135:GLY:HA3	1:A:146:LEU:HD23	1.84	0.59
1:B:113:PRO:HG2	1:B:144:THR:HG22	1.86	0.58
1:A:328:VAL:O	1:A:427:ALA:HA	2.03	0.58
1:B:200:PHE:HB3	1:B:226:VAL:HB	1.88	0.56
1:B:329:GLY:HA3	1:B:428:TYR:CE2	2.41	0.56
1:B:326:VAL:HG12	1:B:328:VAL:HG13	1.88	0.55
1:A:200:PHE:CB	1:A:226:VAL:HB	2.37	0.55
1:A:166:GLU:OE2	1:A:267:THR:OG1	2.24	0.54
1:B:329:GLY:HA3	1:B:428:TYR:CZ	2.43	0.54
1:A:458:PRO:HA	1:A:465:TYR:CD2	2.44	0.52
1:A:68:VAL:HG23	1:A:90:ARG:HB2	1.91	0.52
1:A:135:GLY:CA	1:A:146:LEU:HD23	2.40	0.52
1:A:21:ARG:HD2	3:A:2001:HOH:O	2.09	0.51
1:B:203:SGB:H1C1	1:B:203:SGB:H4C2	1.93	0.51
1:B:339:LEU:HD13	1:B:346:PHE:CE2	2.45	0.51
1:A:200:PHE:HB3	1:A:226:VAL:HB	1.93	0.51
1:B:328:VAL:O	1:B:427:ALA:HA	2.10	0.51
1:A:116:VAL:HB	1:A:199:LEU:HD23	1.94	0.49
1:A:493:ARG:HB2	1:A:493:ARG:CZ	2.42	0.49

*Continued on next page...*



*Continued from previous page...*

Atom-1	Atom-2	Interatomic distance (Å)	Clash overlap (Å)
1:A:493:ARG:HB2	1:A:493:ARG:NH1	2.27	0.49
1:A:339:LEU:HD11	1:A:399:SER:HA	1.95	0.49
1:A:24:THR:C	1:A:26:GLY:H	2.16	0.49
1:B:200:PHE:HB2	1:B:226:VAL:HB	1.95	0.48
1:A:25:PRO:HG2	1:A:461:PRO:HD3	1.95	0.47
1:A:102:TRP:HB3	1:A:139:VAL:HG21	1.95	0.47
1:A:257:CYS:HA	1:A:258:PRO:HD2	1.68	0.47
1:B:210:GLY:HA3	1:B:232:PRO:HG3	1.96	0.47
1:B:135:GLY:CA	1:B:146:LEU:HD23	2.45	0.47
1:B:293:SER:HA	1:B:365:VAL:HG13	1.96	0.47
1:A:300:VAL:HB	1:A:301:PRO:HD2	1.96	0.47
1:A:472:PHE:CZ	1:A:514:ASP:HA	2.50	0.47
1:B:45:ARG:HH12	1:B:51:GLU:CG	2.24	0.47
1:A:329:GLY:HA3	1:A:428:TYR:CZ	2.50	0.46
1:A:45:ARG:HH11	1:A:51:GLU:HG3	1.79	0.46
1:A:102:TRP:CB	1:A:139:VAL:HG21	2.46	0.46
1:B:444:GLY:O	1:B:446:PRO:HD3	2.16	0.46
1:B:68:VAL:HG23	1:B:90:ARG:HB2	1.97	0.45
1:B:80:PHE:CE2	1:B:82:GLY:HA3	2.51	0.45
1:A:177:ARG:CZ	1:A:217:PRO:HB2	2.46	0.45
1:B:17:LEU:HD23	1:B:60:VAL:HB	1.98	0.45
1:A:539:LEU:C	1:A:539:LEU:HD23	2.37	0.45
1:B:24:THR:HB	1:B:25:PRO:HD2	1.99	0.45
1:B:80:PHE:O	1:B:84:GLU:HG2	2.17	0.45
1:B:404:ASP:OD2	1:B:525[B]:ARG:NH2	2.47	0.45
1:A:4:GLU:HG3	1:A:9:LEU:HD11	2.00	0.44
2:A:1543:1PE:H152	3:A:2041:HOH:O	2.18	0.44
1:A:417:ARG:HD2	1:A:417:ARG:HA	1.78	0.44
1:A:216:PRO:HB2	1:A:217:PRO:HD3	1.99	0.44
1:B:300:VAL:HB	1:B:301:PRO:HD2	2.00	0.43
1:A:76:LEU:HD22	1:A:341:TYR:CE1	2.53	0.43
1:A:408:VAL:HG11	1:A:525[B]:ARG:HG3	1.99	0.43
1:B:437:LEU:HD21	1:B:446:PRO:CD	2.48	0.43
1:A:269:LEU:HD23	1:A:269:LEU:C	2.39	0.43
1:A:390:ASP:HA	1:A:391:PRO:HD3	1.83	0.43
1:B:10:VAL:HG22	1:B:107:ARG:NH2	2.34	0.43
1:B:493:ARG:CZ	1:B:493:ARG:HB2	2.48	0.43
1:A:4:GLU:CG	1:A:9:LEU:HD11	2.49	0.42
1:A:293:SER:HA	1:A:365:VAL:HG13	2.00	0.42
1:B:46:ARG:O	1:B:274:ARG:NH1	2.52	0.42
1:A:210:GLY:O	1:A:213:LEU:HB2	2.18	0.42

*Continued on next page...*

Continued from previous page...

Atom-1	Atom-2	Interatomic distance (Å)	Clash overlap (Å)
1:A:444:GLY:O	1:A:446:PRO:HD3	2.18	0.42
1:B:180:LEU:CD2	1:B:199:LEU:HD21	2.41	0.42
1:A:80:PHE:O	1:A:84:GLU:HG2	2.19	0.42
1:A:24:THR:O	1:A:26:GLY:N	2.53	0.42
1:A:372:ASP:O	1:A:376:GLU:HG2	2.20	0.42
1:B:112:THR:HG23	1:B:113:PRO:HD2	2.02	0.42
1:A:112:THR:HG23	1:A:113:PRO:HD2	2.01	0.41
1:A:329:GLY:HA3	1:A:428:TYR:CE2	2.56	0.41
1:B:433:ARG:HG3	1:B:437:LEU:HD23	2.03	0.41
1:B:24:THR:HG22	1:B:136:ARG:HD3	2.03	0.40

There are no symmetry-related clashes.

## 5.3 Torsion angles [i](#)

### 5.3.1 Protein backbone [i](#)

In the following table, the Percentiles column shows the percent Ramachandran outliers of the chain as a percentile score with respect to all X-ray entries followed by that with respect to entries of similar resolution.

The Analysed column shows the number of residues for which the backbone conformation was analysed, and the total number of residues.

Mol	Chain	Analysed	Favoured	Allowed	Outliers	Percentiles
1	A	531/542 (98%)	513 (97%)	17 (3%)	1 (0%)	47 62
1	B	529/542 (98%)	514 (97%)	15 (3%)	0	100 100
All	All	1060/1084 (98%)	1027 (97%)	32 (3%)	1 (0%)	51 68

All (1) Ramachandran outliers are listed below:

Mol	Chain	Res	Type
1	A	25	PRO

### 5.3.2 Protein sidechains [i](#)

In the following table, the Percentiles column shows the percent sidechain outliers of the chain as a percentile score with respect to all X-ray entries followed by that with respect to entries of similar resolution.

The Analysed column shows the number of residues for which the sidechain conformation was analysed, and the total number of residues.

Mol	Chain	Analysed	Rotameric	Outliers	Percentiles	
1	A	436/436 (100%)	429 (98%)	7 (2%)	62	79
1	B	436/436 (100%)	431 (99%)	5 (1%)	73	87
All	All	872/872 (100%)	860 (99%)	12 (1%)	67	82

All (12) residues with a non-rotameric sidechain are listed below:

Mol	Chain	Res	Type
1	A	24	THR
1	A	61	ASP
1	A	70	TYR
1	A	200	PHE
1	A	295	PHE
1	A	396	GLU
1	A	417	ARG
1	B	29	VAL
1	B	70	TYR
1	B	200	PHE
1	B	295	PHE
1	B	396	GLU

Sometimes sidechains can be flipped to improve hydrogen bonding and reduce clashes. There are no such sidechains identified.

### 5.3.3 RNA [i](#)

There are no RNA molecules in this entry.

## 5.4 Non-standard residues in protein, DNA, RNA chains [i](#)

2 non-standard protein/DNA/RNA residues are modelled in this entry.

In the following table, the Counts columns list the number of bonds (or angles) for which Mogul statistics could be retrieved, the number of bonds (or angles) that are observed in the model and the number of bonds (or angles) that are defined in the Chemical Component Dictionary. The Link column lists molecule types, if any, to which the group is linked. The Z score for a bond length (or angle) is the number of standard deviations the observed value is removed from the expected value. A bond length (or angle) with  $|Z| > 2$  is considered an outlier worth inspection. RMSZ is the root-mean-square of all Z scores of the bond lengths (or angles).

Mol	Type	Chain	Res	Link	Bond lengths			Bond angles		
					Counts	RMSZ	# Z  > 2	Counts	RMSZ	# Z  > 2
1	SGB	B	203	1	10,12,13	1.57	2 (20%)	9,16,18	1.99	2 (22%)
1	SGB	A	203	1	10,12,13	1.43	2 (20%)	9,16,18	1.38	1 (11%)

In the following table, the Chirals column lists the number of chiral outliers, the number of chiral centers analysed, the number of these observed in the model and the number defined in the Chemical Component Dictionary. Similar counts are reported in the Torsion and Rings columns. '-' means no outliers of that kind were identified.

Mol	Type	Chain	Res	Link	Chirals	Torsions	Rings
1	SGB	B	203	1	-	5/10/13/15	-
1	SGB	A	203	1	-	3/10/13/15	-

All (4) bond length outliers are listed below:

Mol	Chain	Res	Type	Atoms	Z	Observed(Å)	Ideal(Å)
1	B	203	SGB	P1-OG	3.61	1.62	1.58
1	A	203	SGB	P1-OG	3.22	1.62	1.58
1	B	203	SGB	P1-O1	2.87	1.51	1.47
1	A	203	SGB	P1-O1	2.53	1.51	1.47

All (3) bond angle outliers are listed below:

Mol	Chain	Res	Type	Atoms	Z	Observed(°)	Ideal(°)
1	B	203	SGB	OG-CB-CA	5.38	113.38	108.14
1	A	203	SGB	OG-CB-CA	3.25	111.31	108.14
1	B	203	SGB	P1-O2-C2	-2.02	117.92	123.40

There are no chirality outliers.

All (8) torsion outliers are listed below:

Mol	Chain	Res	Type	Atoms
1	A	203	SGB	N-CA-CB-OG
1	B	203	SGB	N-CA-CB-OG
1	B	203	SGB	C2-O2-P1-O1
1	B	203	SGB	C2-O2-P1-C1
1	B	203	SGB	C4-C2-O2-P1
1	A	203	SGB	C4-C2-O2-P1
1	A	203	SGB	C3-C2-O2-P1
1	B	203	SGB	C3-C2-O2-P1

There are no ring outliers.

1 monomer is involved in 1 short contact:

Mol	Chain	Res	Type	Clashes	Symm-Clashes
1	B	203	SGB	1	0

## 5.5 Carbohydrates [i](#)

There are no monosaccharides in this entry.

## 5.6 Ligand geometry [i](#)

1 ligand is modelled in this entry.

In the following table, the Counts columns list the number of bonds (or angles) for which Mogul statistics could be retrieved, the number of bonds (or angles) that are observed in the model and the number of bonds (or angles) that are defined in the Chemical Component Dictionary. The Link column lists molecule types, if any, to which the group is linked. The Z score for a bond length (or angle) is the number of standard deviations the observed value is removed from the expected value. A bond length (or angle) with  $|Z| > 2$  is considered an outlier worth inspection. RMSZ is the root-mean-square of all Z scores of the bond lengths (or angles).

Mol	Type	Chain	Res	Link	Bond lengths			Bond angles		
					Counts	RMSZ	# Z  > 2	Counts	RMSZ	# Z  > 2
2	1PE	A	1543	-	15,15,15	0.87	0	14,14,14	0.61	0

In the following table, the Chirals column lists the number of chiral outliers, the number of chiral centers analysed, the number of these observed in the model and the number defined in the Chemical Component Dictionary. Similar counts are reported in the Torsion and Rings columns. '-' means no outliers of that kind were identified.

Mol	Type	Chain	Res	Link	Chirals	Torsions	Rings
2	1PE	A	1543	-	-	4/13/13/13	-

There are no bond length outliers.

There are no bond angle outliers.

There are no chirality outliers.

All (4) torsion outliers are listed below:

Mol	Chain	Res	Type	Atoms
2	A	1543	1PE	OH2-C12-C22-OH3
2	A	1543	1PE	C12-C22-OH3-C23

*Continued on next page...*

*Continued from previous page...*

Mol	Chain	Res	Type	Atoms
2	A	1543	1PE	C15-C25-OH5-C14
2	A	1543	1PE	OH6-C15-C25-OH5

There are no ring outliers.

1 monomer is involved in 2 short contacts:

Mol	Chain	Res	Type	Clashes	Symm-Clashes
2	A	1543	1PE	2	0

## 5.7 Other polymers [i](#)

There are no such residues in this entry.

## 5.8 Polymer linkage issues [i](#)

There are no chain breaks in this entry.

## 6 Fit of model and data [i](#)

### 6.1 Protein, DNA and RNA chains [i](#)

In the following table, the column labelled ‘#RSRZ > 2’ contains the number (and percentage) of RSRZ outliers, followed by percent RSRZ outliers for the chain as percentile scores relative to all X-ray entries and entries of similar resolution. The OWAB column contains the minimum, median, 95<sup>th</sup> percentile and maximum values of the occupancy-weighted average B-factor per residue. The column labelled ‘Q < 0.9’ lists the number of (and percentage) of residues with an average occupancy less than 0.9.

Mol	Chain	Analysed	<RSRZ>	#RSRZ>2	OWAB(Å <sup>2</sup> )	Q<0.9
1	A	531/542 (97%)	-0.53	6 (1%) 80 79	17, 33, 59, 123	0
1	B	529/542 (97%)	-0.61	3 (0%) 89 88	17, 30, 53, 99	0
All	All	1060/1084 (97%)	-0.57	9 (0%) 86 84	17, 31, 57, 123	0

All (9) RSRZ outliers are listed below:

Mol	Chain	Res	Type	RSRZ
1	A	493	ARG	5.2
1	A	263	GLY	3.1
1	A	492	PRO	2.8
1	B	493	ARG	2.6
1	B	494	ASP	2.6
1	A	491	GLU	2.5
1	B	4	GLU	2.3
1	A	111	PRO	2.2
1	A	4	GLU	2.1

### 6.2 Non-standard residues in protein, DNA, RNA chains [i](#)

In the following table, the Atoms column lists the number of modelled atoms in the group and the number defined in the chemical component dictionary. The B-factors column lists the minimum, median, 95<sup>th</sup> percentile and maximum values of B factors of atoms in the group. The column labelled ‘Q < 0.9’ lists the number of atoms with occupancy less than 0.9.

Mol	Type	Chain	Res	Atoms	RSCC	RSR	B-factors(Å <sup>2</sup> )	Q<0.9
1	SGB	B	203	13/14	0.97	0.16	24,31,46,51	0
1	SGB	A	203	13/14	0.98	0.17	21,31,45,53	0

### 6.3 Carbohydrates [i](#)

There are no monosaccharides in this entry.

### 6.4 Ligands [i](#)

In the following table, the Atoms column lists the number of modelled atoms in the group and the number defined in the chemical component dictionary. The B-factors column lists the minimum, median, 95<sup>th</sup> percentile and maximum values of B factors of atoms in the group. The column labelled 'Q< 0.9' lists the number of atoms with occupancy less than 0.9.

Mol	Type	Chain	Res	Atoms	RSCC	RSR	B-factors( $\text{\AA}^2$ )	Q<0.9
2	1PE	A	1543	16/16	0.69	0.23	64,83,92,97	0

### 6.5 Other polymers [i](#)

There are no such residues in this entry.