



Full wwPDB X-ray Structure Validation Report ⓘ

Mar 27, 2023 – 03:15 PM EDT

PDB ID : 8FM8
Title : HIV-1 gp120 complex with CJF-IV-046
Authors : Gong, Z.; Hendrickson, W.A.
Deposited on : 2022-12-22
Resolution : 2.47 Å(reported)

This is a Full wwPDB X-ray Structure Validation Report for a publicly released PDB entry.

We welcome your comments at validation@mail.wwpdb.org

A user guide is available at

<https://www.wwpdb.org/validation/2017/XrayValidationReportHelp>

with specific help available everywhere you see the ⓘ symbol.

The types of validation reports are described at

<http://www.wwpdb.org/validation/2017/FAQs#types>.

The following versions of software and data (see [references ⓘ](#)) were used in the production of this report:

MolProbity : 4.02b-467
Mogul : 1.8.5 (274361), CSD as541be (2020)
Xtriage (Phenix) : 1.13
EDS : 2.32.2
buster-report : 1.1.7 (2018)
Percentile statistics : 20191225.v01 (using entries in the PDB archive December 25th 2019)
Refmac : 5.8.0158
CCP4 : 7.0.044 (Gargrove)
Ideal geometry (proteins) : Engh & Huber (2001)
Ideal geometry (DNA, RNA) : Parkinson et al. (1996)
Validation Pipeline (wwPDB-VP) : 2.32.2

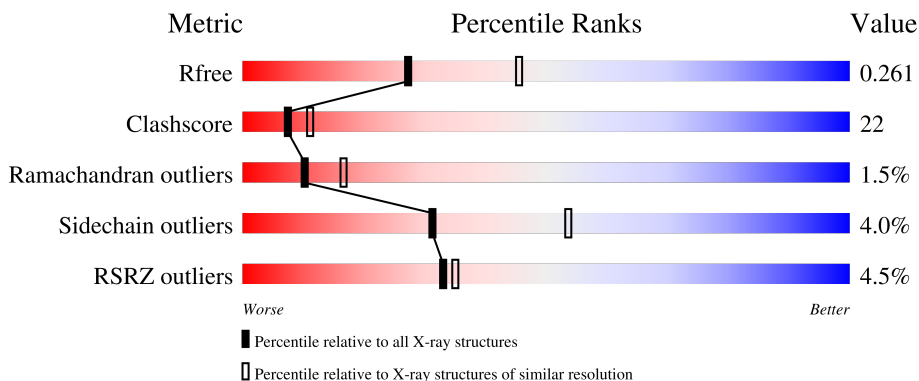
1 Overall quality at a glance

The following experimental techniques were used to determine the structure:

X-RAY DIFFRACTION

The reported resolution of this entry is 2.47 Å.

Percentile scores (ranging between 0-100) for global validation metrics of the entry are shown in the following graphic. The table shows the number of entries on which the scores are based.



Metric	Whole archive (#Entries)	Similar resolution (#Entries, resolution range(Å))
R_{free}	130704	5857 (2.50-2.46)
Clashscore	141614	6594 (2.50-2.46)
Ramachandran outliers	138981	6469 (2.50-2.46)
Sidechain outliers	138945	6471 (2.50-2.46)
RSRZ outliers	127900	5738 (2.50-2.46)

The table below summarises the geometric issues observed across the polymeric chains and their fit to the electron density. The red, orange, yellow and green segments of the lower bar indicate the fraction of residues that contain outliers for ≥ 3 , 2, 1 and 0 types of geometric quality criteria respectively. A grey segment represents the fraction of residues that are not modelled. The numeric value for each fraction is indicated below the corresponding segment, with a dot representing fractions $\leq 5\%$. The upper red bar (where present) indicates the fraction of residues that have poor fit to the electron density. The numeric value is given above the bar.

Mol	Chain	Length	Quality of chain
1	A	358	 2% 60% 29% 6%
1	B	358	 6% 59% 30% 6%
1	C	358	 4% 59% 30% 6%
1	D	358	 4% 61% 28% 6%

2 Entry composition [i](#)

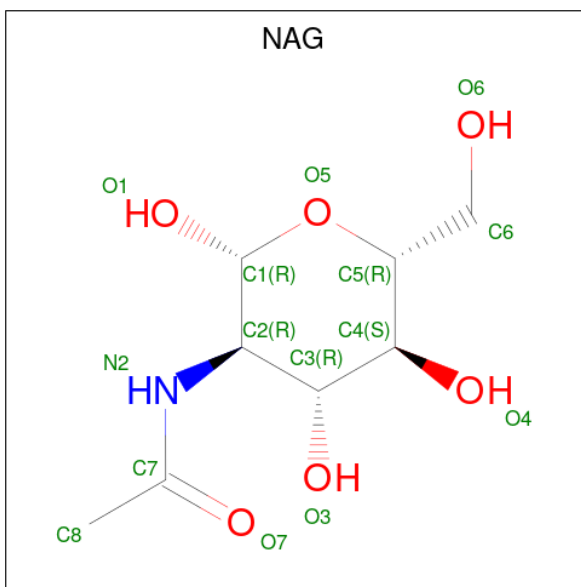
There are 5 unique types of molecules in this entry. The entry contains 11282 atoms, of which 5 are hydrogens and 0 are deuteriums.

In the tables below, the ZeroOcc column contains the number of atoms modelled with zero occupancy, the AltConf column contains the number of residues with at least one atom in alternate conformation and the Trace column contains the number of residues modelled with at most 2 atoms.

- Molecule 1 is a protein called Envelope glycoprotein gp120.

Mol	Chain	Residues	Atoms					ZeroOcc	AltConf	Trace
			Total	C	N	O	S			
1	C	335	Total 2627	C 1642	N 459	O 506	S 20	0	0	0
1	D	335	Total 2627	C 1642	N 459	O 506	S 20	0	0	0
1	A	335	Total 2627	C 1642	N 459	O 506	S 20	0	0	0
1	B	335	Total 2627	C 1642	N 459	O 506	S 20	0	0	0

- Molecule 2 is 2-acetamido-2-deoxy-beta-D-glucopyranose (three-letter code: NAG) (formula: C₈H₁₅NO₆).



Mol	Chain	Residues	Atoms				ZeroOcc	AltConf
			Total	C	N	O		
2	C	1	Total 14	C 8	N 1	O 5	0	0
2	C	1	Total 14	C 8	N 1	O 5	0	0

Continued on next page...

Continued from previous page...

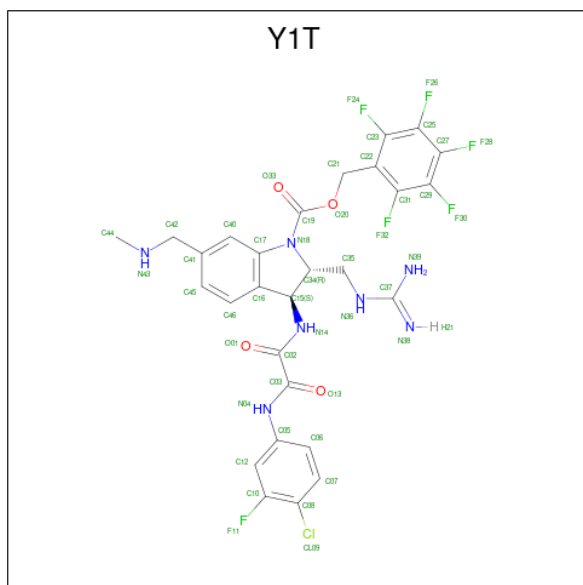
Mol	Chain	Residues	Atoms				ZeroOcc	AltConf
2	C	1	Total	C	N	O	0	0
			14	8	1	5		
2	C	1	Total	C	N	O	0	0
			14	8	1	5		
2	C	1	Total	C	N	O	0	0
			14	8	1	5		
2	C	1	Total	C	N	O	0	0
			14	8	1	5		
2	D	1	Total	C	N	O	0	0
			14	8	1	5		
2	D	1	Total	C	N	O	0	0
			14	8	1	5		
2	D	1	Total	C	N	O	0	0
			14	8	1	5		
2	D	1	Total	C	N	O	0	0
			14	8	1	5		
2	D	1	Total	C	N	O	0	0
			14	8	1	5		
2	A	1	Total	C	N	O	0	0
			14	8	1	5		
2	A	1	Total	C	N	O	0	0
			14	8	1	5		
2	A	1	Total	C	N	O	0	0
			14	8	1	5		
2	A	1	Total	C	N	O	0	0
			14	8	1	5		
2	A	1	Total	C	N	O	0	0
			14	8	1	5		
2	B	1	Total	C	N	O	0	0
			14	8	1	5		
2	B	1	Total	C	N	O	0	0
			14	8	1	5		
2	B	1	Total	C	N	O	0	0
			14	8	1	5		
2	B	1	Total	C	N	O	0	0
			14	8	1	5		

Continued on next page...

Continued from previous page...

Mol	Chain	Residues	Atoms				ZeroOcc	AltConf
			Total	C	N	O		
2	B	1	14	8	1	5	0	0

- Molecule 3 is (pentafluorophenyl)methyl (2R,3S)-2-(carbamimidamidomethyl)-3-[2-(4-chloro-3-fluoroanilino)(oxo)acetamido]-6-[(methylamino)methyl]-2,3-dihydro-1H-indole-1-carboxylate (three-letter code: Y1T) (formula: C₂₈H₂₄ClF₆N₇O₄) (labeled as "Ligand of Interest" by depositor).



Mol	Chain	Residues	Atoms					ZeroOcc	AltConf	
			Total	C	Cl	F	N			O
3	C	1	46	28	1	6	7	4	0	0
3	D	1	46	28	1	6	7	4	0	0
3	A	1	46	28	1	6	7	4	0	0
3	B	1	46	28	1	6	7	4	0	0

- Molecule 4 is IMIDAZOLE (three-letter code: IMD) (formula: C₃H₅N₂).



Mol	Chain	Residues	Atoms				ZeroOcc	AltConf
			Total	C	H	N		
4	A	1	10	3	5	2	0	0

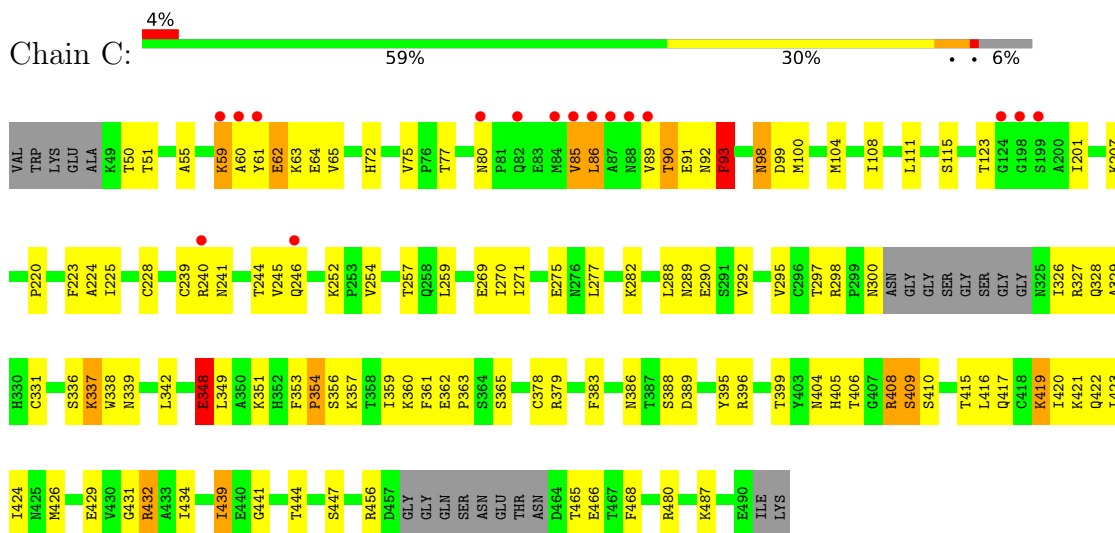
- Molecule 5 is water.

Mol	Chain	Residues	Atoms		ZeroOcc	AltConf
5	C	70	Total	O	0	0
			70	70		
5	D	53	Total	O	0	0
			53	53		
5	A	68	Total	O	0	0
			68	68		
5	B	53	Total	O	0	0
			53	53		

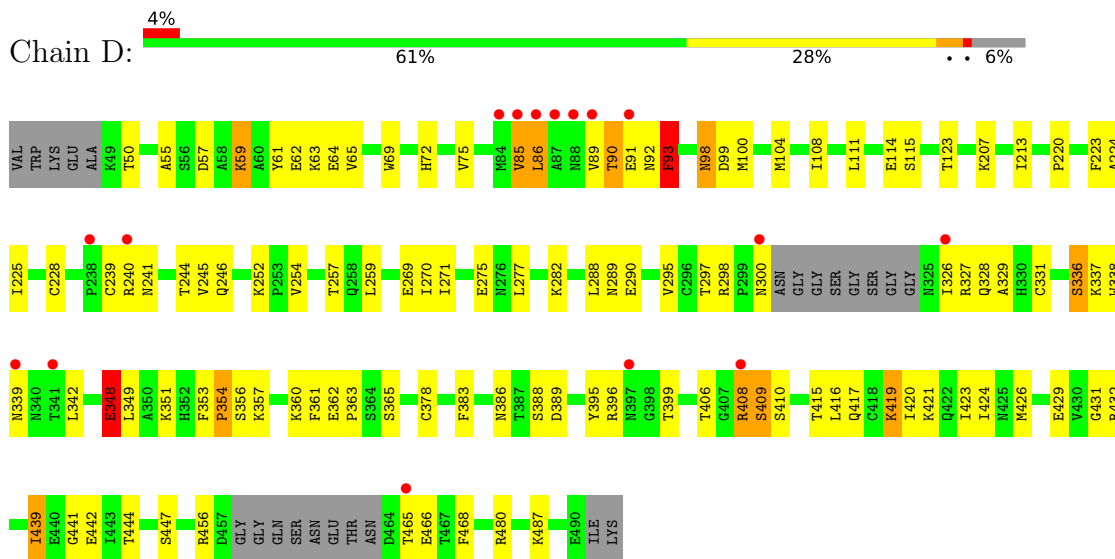
3 Residue-property plots i

These plots are drawn for all protein, RNA, DNA and oligosaccharide chains in the entry. The first graphic for a chain summarises the proportions of the various outlier classes displayed in the second graphic. The second graphic shows the sequence view annotated by issues in geometry and electron density. Residues are color-coded according to the number of geometric quality criteria for which they contain at least one outlier: green = 0, yellow = 1, orange = 2 and red = 3 or more. A red dot above a residue indicates a poor fit to the electron density ($RSRZ > 2$). Stretches of 2 or more consecutive residues without any outlier are shown as a green connector. Residues present in the sample, but not in the model, are shown in grey.

- Molecule 1: Envelope glycoprotein gp120

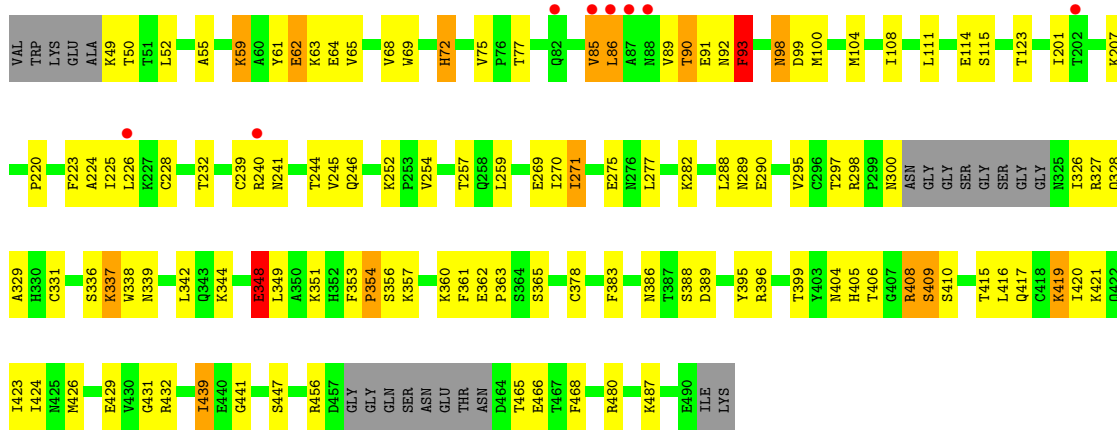


- Molecule 1: Envelope glycoprotein gp120

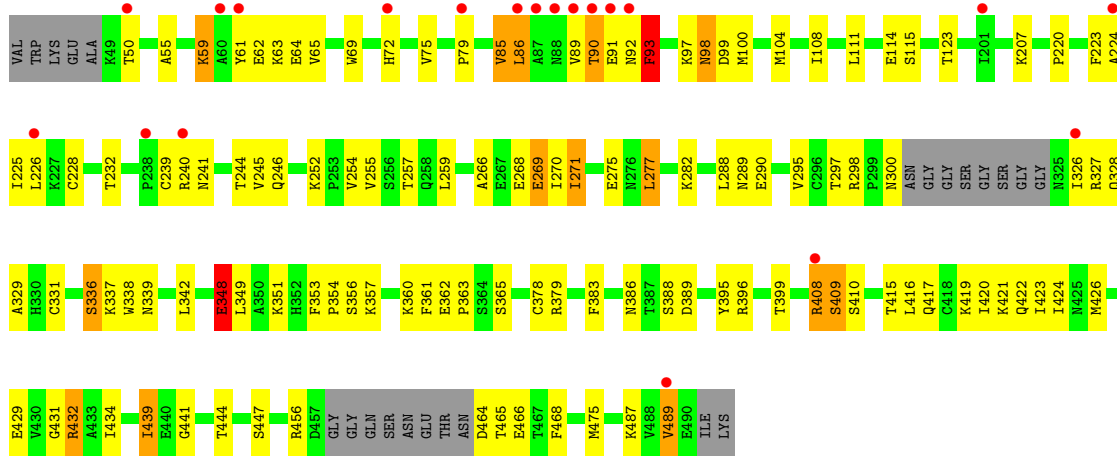


- Molecule 1: Envelope glycoprotein gp120





• Molecule 1: Envelope glycoprotein gp120



4 Data and refinement statistics

Property	Value	Source
Space group	P 21 21 21	Depositor
Cell constants a, b, c, α , β , γ	71.53Å 121.79Å 194.60Å 90.00° 90.00° 90.00°	Depositor
Resolution (Å)	48.65 – 2.47 48.65 – 2.47	Depositor EDS
% Data completeness (in resolution range)	69.5 (48.65-2.47) 69.4 (48.65-2.47)	Depositor EDS
R_{merge}	0.25	Depositor
R_{sym}	(Not available)	Depositor
$\langle I/\sigma(I) \rangle$ ¹	1.93 (at 2.48Å)	Xtrriage
Refinement program	PHENIX 1.20rc3_4406	Depositor
R, R_{free}	0.217 , 0.263 0.219 , 0.261	Depositor DCC
R_{free} test set	1999 reflections (4.66%)	wwPDB-VP
Wilson B-factor (Å ²)	36.8	Xtrriage
Anisotropy	0.031	Xtrriage
Bulk solvent k_{sol} (e/Å ³), B_{sol} (Å ²)	0.35 , 52.1	EDS
L-test for twinning ²	$\langle L \rangle = 0.50$, $\langle L^2 \rangle = 0.33$	Xtrriage
Estimated twinning fraction	No twinning to report.	Xtrriage
F_o, F_c correlation	0.91	EDS
Total number of atoms	11282	wwPDB-VP
Average B, all atoms (Å ²)	42.0	wwPDB-VP

Xtrriage's analysis on translational NCS is as follows: *The largest off-origin peak in the Patterson function is 17.60% of the height of the origin peak. No significant pseudotranslation is detected.*

¹Intensities estimated from amplitudes.

²Theoretical values of $\langle |L| \rangle$, $\langle L^2 \rangle$ for acentric reflections are 0.5, 0.333 respectively for untwinned datasets, and 0.375, 0.2 for perfectly twinned datasets.

5 Model quality [i](#)

5.1 Standard geometry [i](#)

Bond lengths and bond angles in the following residue types are not validated in this section: NAG, Y1T, IMD

The Z score for a bond length (or angle) is the number of standard deviations the observed value is removed from the expected value. A bond length (or angle) with $|Z| > 5$ is considered an outlier worth inspection. RMSZ is the root-mean-square of all Z scores of the bond lengths (or angles).

Mol	Chain	Bond lengths		Bond angles	
		RMSZ	# Z >5	RMSZ	# Z >5
1	A	0.66	1/2682 (0.0%)	0.89	7/3640 (0.2%)
1	B	0.66	1/2682 (0.0%)	0.89	7/3640 (0.2%)
1	C	0.66	1/2682 (0.0%)	0.89	7/3640 (0.2%)
1	D	0.66	1/2682 (0.0%)	0.89	7/3640 (0.2%)
All	All	0.66	4/10728 (0.0%)	0.89	28/14560 (0.2%)

Chiral center outliers are detected by calculating the chiral volume of a chiral center and verifying if the center is modelled as a planar moiety or with the opposite hand. A planarity outlier is detected by checking planarity of atoms in a peptide group, atoms in a mainchain group or atoms of a sidechain that are expected to be planar.

Mol	Chain	#Chirality outliers	#Planarity outliers
1	A	0	3
1	B	0	3
1	C	0	3
1	D	0	3
All	All	0	12

All (4) bond length outliers are listed below:

Mol	Chain	Res	Type	Atoms	Z	Observed(Å)	Ideal(Å)
1	B	85	VAL	CB-CG2	5.05	1.63	1.52
1	A	85	VAL	CB-CG2	5.04	1.63	1.52
1	D	85	VAL	CB-CG2	5.03	1.63	1.52
1	C	85	VAL	CB-CG2	5.01	1.63	1.52

All (28) bond angle outliers are listed below:

Mol	Chain	Res	Type	Atoms	Z	Observed(°)	Ideal(°)
1	D	277	LEU	CB-CG-CD2	-6.72	99.57	111.00

Continued on next page...

Continued from previous page...

Mol	Chain	Res	Type	Atoms	Z	Observed(°)	Ideal(°)
1	B	277	LEU	CB-CG-CD2	-6.71	99.58	111.00
1	A	277	LEU	CB-CG-CD2	-6.71	99.60	111.00
1	C	277	LEU	CB-CG-CD2	-6.70	99.62	111.00
1	B	408	ARG	CB-CG-CD	6.69	129.00	111.60
1	D	408	ARG	CB-CG-CD	6.68	128.97	111.60
1	C	408	ARG	CB-CG-CD	6.68	128.96	111.60
1	A	408	ARG	CB-CG-CD	6.67	128.94	111.60
1	C	408	ARG	CA-CB-CG	-6.60	98.87	113.40
1	A	408	ARG	CA-CB-CG	-6.59	98.89	113.40
1	D	408	ARG	CA-CB-CG	-6.59	98.90	113.40
1	B	408	ARG	CA-CB-CG	-6.58	98.93	113.40
1	C	348	GLU	OE1-CD-OE2	-5.96	116.15	123.30
1	A	348	GLU	OE1-CD-OE2	-5.95	116.16	123.30
1	D	348	GLU	OE1-CD-OE2	-5.95	116.16	123.30
1	B	348	GLU	OE1-CD-OE2	-5.93	116.18	123.30
1	A	85	VAL	CG1-CB-CG2	5.68	119.99	110.90
1	C	85	VAL	CG1-CB-CG2	5.68	119.98	110.90
1	D	85	VAL	CG1-CB-CG2	5.66	119.95	110.90
1	B	85	VAL	CG1-CB-CG2	5.64	119.93	110.90
1	C	432	ARG	CB-CG-CD	5.58	126.12	111.60
1	A	432	ARG	CB-CG-CD	5.56	126.06	111.60
1	D	432	ARG	CB-CG-CD	5.56	126.05	111.60
1	B	432	ARG	CB-CG-CD	5.56	126.05	111.60
1	D	337	LYS	CA-CB-CG	-5.49	101.33	113.40
1	A	337	LYS	CA-CB-CG	-5.49	101.33	113.40
1	B	337	LYS	CA-CB-CG	-5.48	101.35	113.40
1	C	337	LYS	CA-CB-CG	-5.46	101.38	113.40

There are no chirality outliers.

All (12) planarity outliers are listed below:

Mol	Chain	Res	Type	Group
1	A	348	GLU	Sidechain
1	A	396	ARG	Sidechain
1	A	93	PHE	Sidechain
1	B	348	GLU	Sidechain
1	B	396	ARG	Sidechain
1	B	93	PHE	Sidechain
1	C	348	GLU	Sidechain
1	C	396	ARG	Sidechain
1	C	93	PHE	Sidechain
1	D	348	GLU	Sidechain

Continued on next page...

Continued from previous page...

Mol	Chain	Res	Type	Group
1	D	396	ARG	Sidechain
1	D	93	PHE	Sidechain

5.2 Too-close contacts [i](#)

In the following table, the Non-H and H(model) columns list the number of non-hydrogen atoms and hydrogen atoms in the chain respectively. The H(added) column lists the number of hydrogen atoms added and optimized by MolProbity. The Clashes column lists the number of clashes within the asymmetric unit, whereas Symm-Clashes lists symmetry-related clashes.

Mol	Chain	Non-H	H(model)	H(added)	Clashes	Symm-Clashes
1	A	2627	0	2542	117	1
1	B	2627	0	2542	115	0
1	C	2627	0	2542	143	1
1	D	2627	0	2542	125	0
2	A	84	0	78	11	0
2	B	84	0	78	6	0
2	C	84	0	78	8	0
2	D	84	0	78	6	0
3	A	46	0	0	0	0
3	B	46	0	0	0	0
3	C	46	0	0	0	0
3	D	46	0	0	1	0
4	A	5	5	5	2	0
5	A	68	0	0	4	0
5	B	53	0	0	10	0
5	C	70	0	0	5	0
5	D	53	0	0	1	0
All	All	11277	5	10485	478	1

The all-atom clashscore is defined as the number of clashes found per 1000 atoms (including hydrogen atoms). The all-atom clashscore for this structure is 22.

All (478) close contacts within the same asymmetric unit are listed below, sorted by their clash magnitude.

Atom-1	Atom-2	Interatomic distance (Å)	Clash overlap (Å)
1:C:61:TYR:HD2	1:D:59:LYS:NZ	1.27	1.27
1:C:61:TYR:CD2	1:D:59:LYS:NZ	2.11	1.17
1:B:432:ARG:NH2	5:B:601:HOH:O	1.77	1.16
1:C:60:ALA:HB3	1:D:59:LYS:HE2	1.35	1.05

Continued on next page...

Continued from previous page...

Atom-1	Atom-2	Interatomic distance (Å)	Clash overlap (Å)
2:C:503:NAG:H83	2:C:503:NAG:H3	1.40	1.01
2:A:503:NAG:H3	2:A:503:NAG:H83	1.40	1.00
2:D:503:NAG:H3	2:D:503:NAG:H83	1.40	0.99
2:B:503:NAG:H3	2:B:503:NAG:H83	1.40	0.99
1:C:60:ALA:C	1:D:59:LYS:HE3	1.88	0.93
1:C:80:ASN:HB2	1:D:442:GLU:HB3	1.49	0.93
1:C:61:TYR:HD2	1:D:59:LYS:HZ2	1.02	0.91
1:C:61:TYR:N	1:D:59:LYS:HE3	1.86	0.89
1:C:61:TYR:N	1:D:59:LYS:HZ1	1.75	0.84
2:D:503:NAG:H3	2:D:503:NAG:C8	2.08	0.84
2:B:503:NAG:H3	2:B:503:NAG:C8	2.08	0.84
2:C:503:NAG:H3	2:C:503:NAG:C8	2.08	0.83
1:D:59:LYS:HG2	1:D:61:TYR:CZ	2.14	0.83
2:A:503:NAG:H3	2:A:503:NAG:C8	2.08	0.83
1:C:61:TYR:H	1:D:59:LYS:HZ1	1.22	0.82
1:B:464:ASP:OD1	5:B:602:HOH:O	1.97	0.82
1:C:408:ARG:NH1	1:A:399:THR:HB	1.93	0.82
1:B:59:LYS:HG2	1:B:61:TYR:CZ	2.14	0.82
1:C:404:ASN:HD22	2:A:505:NAG:H62	1.45	0.81
1:A:59:LYS:HG2	1:A:61:TYR:CZ	2.14	0.81
1:C:85:VAL:O	1:C:86:LEU:HG	1.82	0.80
1:A:59:LYS:H	1:A:59:LYS:HD2	1.48	0.79
1:A:85:VAL:O	1:A:86:LEU:HG	1.82	0.79
1:D:59:LYS:H	1:D:59:LYS:HD2	1.48	0.79
1:C:61:TYR:N	1:D:59:LYS:CE	2.45	0.79
1:D:85:VAL:O	1:D:86:LEU:HG	1.82	0.78
1:B:59:LYS:H	1:B:59:LYS:HD2	1.48	0.78
1:C:60:ALA:CB	1:D:59:LYS:HE2	2.11	0.78
1:B:85:VAL:O	1:B:86:LEU:HG	1.81	0.78
1:B:59:LYS:HD2	1:B:59:LYS:N	1.99	0.77
1:D:59:LYS:HD2	1:D:59:LYS:N	1.99	0.77
1:C:60:ALA:C	1:D:59:LYS:CE	2.53	0.77
1:A:59:LYS:HD2	1:A:59:LYS:N	1.99	0.77
1:C:98:ASN:C	1:C:98:ASN:HD22	1.89	0.76
1:A:98:ASN:C	1:A:98:ASN:HD22	1.89	0.76
1:D:98:ASN:C	1:D:98:ASN:HD22	1.89	0.76
1:B:379:ARG:NH1	5:B:604:HOH:O	2.17	0.76
1:B:98:ASN:C	1:B:98:ASN:HD22	1.89	0.75
2:C:503:NAG:H83	2:C:503:NAG:C3	2.16	0.75
2:D:503:NAG:H83	2:D:503:NAG:C3	2.16	0.74
1:C:61:TYR:N	1:D:59:LYS:NZ	2.36	0.73

Continued on next page...

Continued from previous page...

Atom-1	Atom-2	Interatomic distance (Å)	Clash overlap (Å)
2:B:503:NAG:H83	2:B:503:NAG:C3	2.16	0.73
1:C:80:ASN:HB2	1:D:442:GLU:CB	2.18	0.72
1:C:422:GLN:HG3	5:C:635:HOH:O	1.89	0.72
1:D:86:LEU:HB3	1:D:89:VAL:CG2	2.20	0.71
1:C:86:LEU:HB3	1:C:89:VAL:CG2	2.20	0.71
1:A:86:LEU:HB3	1:A:89:VAL:CG2	2.20	0.71
1:B:86:LEU:HB3	1:B:89:VAL:CG2	2.20	0.71
1:A:90:THR:HA	1:A:239:CYS:O	1.91	0.70
2:A:503:NAG:H83	2:A:503:NAG:C3	2.16	0.70
1:D:90:THR:HA	1:D:239:CYS:O	1.91	0.70
1:C:90:THR:HA	1:C:239:CYS:O	1.91	0.70
1:C:408:ARG:HH12	1:A:399:THR:CG2	2.05	0.70
2:C:505:NAG:H62	1:A:404:ASN:HD22	1.57	0.69
1:D:353:PHE:HB3	1:D:357:LYS:HE2	1.75	0.69
1:C:419:LYS:HD3	1:C:421:LYS:HG2	1.75	0.69
1:B:90:THR:HA	1:B:239:CYS:O	1.91	0.69
1:D:419:LYS:HD3	1:D:421:LYS:HG2	1.75	0.69
1:A:419:LYS:HD3	1:A:421:LYS:HG2	1.75	0.69
1:B:353:PHE:HB3	1:B:357:LYS:HE2	1.75	0.68
1:A:93:PHE:CD1	1:A:487:LYS:HD3	2.29	0.68
1:A:49:LYS:HE2	5:A:617:HOH:O	1.94	0.68
1:C:80:ASN:CB	1:D:442:GLU:HB3	2.21	0.68
1:B:419:LYS:HD3	1:B:421:LYS:HG2	1.76	0.68
1:C:93:PHE:CD1	1:C:487:LYS:HD3	2.29	0.68
1:C:80:ASN:HB2	1:D:442:GLU:H	1.59	0.67
1:C:98:ASN:HD21	1:C:100:MET:HG3	1.59	0.67
1:C:353:PHE:HB3	1:C:357:LYS:HE2	1.75	0.67
1:D:98:ASN:HD21	1:D:100:MET:HG3	1.59	0.67
1:A:98:ASN:HD21	1:A:100:MET:HG3	1.59	0.67
1:A:353:PHE:HB3	1:A:357:LYS:HE2	1.75	0.67
1:C:408:ARG:HH12	1:A:399:THR:HG22	1.60	0.67
1:B:98:ASN:HD21	1:B:100:MET:HG3	1.59	0.66
1:C:61:TYR:H	1:D:59:LYS:NZ	1.94	0.65
1:A:207:LYS:HD2	1:A:439:ILE:HG23	1.79	0.65
1:A:405:HIS:O	4:A:508:IMD:C2	2.45	0.65
1:C:207:LYS:HD2	1:C:439:ILE:HG23	1.79	0.65
1:B:419:LYS:NZ	5:B:603:HOH:O	2.12	0.64
1:D:207:LYS:HD2	1:D:439:ILE:HG23	1.79	0.64
1:D:298:ARG:HG2	1:D:328:GLN:O	1.98	0.64
1:B:298:ARG:HG2	1:B:328:GLN:O	1.98	0.64
1:B:207:LYS:HD2	1:B:439:ILE:HG23	1.79	0.64

Continued on next page...

Continued from previous page...

Atom-1	Atom-2	Interatomic distance (Å)	Clash overlap (Å)
1:A:298:ARG:HG2	1:A:328:GLN:O	1.98	0.63
1:C:275:GLU:OE2	1:C:282:LYS:HE3	1.99	0.63
1:C:298:ARG:HG2	1:C:328:GLN:O	1.98	0.63
1:B:275:GLU:OE2	1:B:282:LYS:HE3	1.99	0.63
1:D:62:GLU:OE2	1:D:64:GLU:HB2	1.99	0.63
1:A:275:GLU:OE2	1:A:282:LYS:HE3	1.99	0.63
1:C:61:TYR:CB	1:D:57:ASP:O	2.46	0.63
1:D:275:GLU:OE2	1:D:282:LYS:HE3	1.99	0.63
1:B:62:GLU:OE2	1:B:64:GLU:HB2	1.99	0.62
1:D:86:LEU:HB3	1:D:89:VAL:HG21	1.81	0.62
1:A:86:LEU:HB3	1:A:89:VAL:HG21	1.81	0.62
1:A:241:ASN:ND2	5:A:601:HOH:O	2.27	0.62
1:C:61:TYR:HB2	1:D:57:ASP:O	2.00	0.62
1:C:98:ASN:ND2	1:C:100:MET:H	1.98	0.62
1:D:98:ASN:ND2	1:D:100:MET:H	1.98	0.62
1:B:79:PRO:HA	5:B:613:HOH:O	2.00	0.62
1:C:290:GLU:OE2	1:C:337:LYS:NZ	2.23	0.61
1:A:98:ASN:ND2	1:A:100:MET:H	1.98	0.61
1:B:98:ASN:ND2	1:B:100:MET:H	1.98	0.61
1:B:362:GLU:HG2	2:B:505:NAG:H82	1.82	0.61
1:C:86:LEU:HB3	1:C:89:VAL:HG21	1.81	0.61
1:D:123:THR:HG21	1:D:429:GLU:OE1	2.01	0.61
1:D:417:GLN:HA	1:D:417:GLN:OE1	2.01	0.61
1:B:86:LEU:HB3	1:B:89:VAL:HG21	1.81	0.61
1:C:123:THR:HG21	1:C:429:GLU:OE1	2.01	0.60
1:C:362:GLU:HG2	2:C:505:NAG:H82	1.82	0.60
1:B:417:GLN:OE1	1:B:417:GLN:HA	2.01	0.60
1:B:123:THR:HG21	1:B:429:GLU:OE1	2.01	0.60
1:C:432:ARG:HH22	1:B:422:GLN:HG2	1.65	0.60
1:D:362:GLU:HG2	2:D:505:NAG:H82	1.82	0.60
1:D:297:THR:OG1	1:D:444:THR:OG1	2.20	0.60
1:A:123:THR:HG21	1:A:429:GLU:OE1	2.01	0.60
1:D:240:ARG:HD2	1:D:241:ASN:CB	2.32	0.60
1:A:362:GLU:HG2	2:A:505:NAG:H82	1.83	0.60
1:C:417:GLN:OE1	1:C:417:GLN:HA	2.02	0.60
1:C:408:ARG:NH1	1:A:399:THR:CG2	2.65	0.59
1:D:290:GLU:OE1	2:D:503:NAG:H81	2.02	0.59
1:D:297:THR:O	1:D:329:ALA:HB1	2.02	0.59
1:A:297:THR:O	1:A:329:ALA:HB1	2.02	0.59
1:A:86:LEU:HB3	1:A:89:VAL:HG23	1.85	0.59
1:A:240:ARG:HD2	1:A:241:ASN:CB	2.32	0.59

Continued on next page...

Continued from previous page...

Atom-1	Atom-2	Interatomic distance (Å)	Clash overlap (Å)
1:B:240:ARG:HD2	1:B:241:ASN:CB	2.32	0.59
1:C:80:ASN:OD1	1:D:300:ASN:CB	2.51	0.59
1:C:240:ARG:HD2	1:C:241:ASN:CB	2.32	0.59
1:C:297:THR:O	1:C:329:ALA:HB1	2.02	0.59
1:B:226:LEU:HG	1:B:489:VAL:HG11	1.83	0.59
1:B:297:THR:O	1:B:329:ALA:HB1	2.02	0.59
1:C:297:THR:OG1	1:C:444:THR:OG1	2.20	0.59
1:A:55:ALA:HA	1:A:75:VAL:O	2.03	0.59
1:B:290:GLU:OE1	2:B:503:NAG:H81	2.02	0.59
1:D:55:ALA:HA	1:D:75:VAL:O	2.03	0.59
1:C:59:LYS:HG2	1:C:61:TYR:CZ	2.37	0.59
1:C:404:ASN:ND2	2:A:505:NAG:H62	2.14	0.58
1:A:417:GLN:HA	1:A:417:GLN:OE1	2.02	0.58
1:A:290:GLU:OE1	2:A:503:NAG:H81	2.02	0.58
1:C:290:GLU:OE1	2:C:503:NAG:H81	2.02	0.58
1:C:408:ARG:NH1	1:A:399:THR:CB	2.65	0.58
1:B:55:ALA:HA	1:B:75:VAL:O	2.03	0.58
1:B:297:THR:HG1	1:B:444:THR:HG1	1.50	0.58
1:C:86:LEU:HB3	1:C:89:VAL:HG23	1.85	0.58
1:D:92:ASN:C	1:D:93:PHE:HD1	2.07	0.58
1:B:297:THR:OG1	1:B:444:THR:OG1	2.20	0.58
1:B:266:ALA:HB1	5:B:631:HOH:O	2.03	0.58
1:C:55:ALA:HA	1:C:75:VAL:O	2.03	0.58
1:C:406:THR:HG21	5:C:652:HOH:O	2.02	0.58
1:B:92:ASN:C	1:B:93:PHE:HD1	2.07	0.58
1:A:338:TRP:NE1	1:A:342:LEU:HD12	2.20	0.57
1:D:98:ASN:HD21	1:D:100:MET:CG	2.18	0.57
1:D:338:TRP:NE1	1:D:342:LEU:HD12	2.20	0.57
3:D:507:Y1T:C44	5:D:631:HOH:O	2.51	0.57
1:A:98:ASN:HD21	1:A:100:MET:CG	2.18	0.57
1:B:86:LEU:HB3	1:B:89:VAL:HG23	1.85	0.57
1:B:98:ASN:HD21	1:B:100:MET:CG	2.18	0.57
1:B:338:TRP:NE1	1:B:342:LEU:HD12	2.20	0.57
1:C:59:LYS:HG2	1:C:61:TYR:OH	2.06	0.56
1:C:98:ASN:HD21	1:C:100:MET:CG	2.18	0.56
1:C:338:TRP:NE1	1:C:342:LEU:HD12	2.20	0.56
1:D:86:LEU:HB3	1:D:89:VAL:HG23	1.85	0.56
1:D:85:VAL:O	1:D:86:LEU:CG	2.53	0.56
1:A:68:VAL:CG1	1:A:72:HIS:HE1	2.19	0.56
1:C:357:LYS:HD2	1:C:466:GLU:HG2	1.88	0.55
1:B:363:PRO:HB3	1:B:388:SER:HA	1.89	0.55

Continued on next page...

Continued from previous page...

Atom-1	Atom-2	Interatomic distance (Å)	Clash overlap (Å)
1:B:421:LYS:NZ	5:B:603:HOH:O	2.39	0.55
1:C:65:VAL:HG21	1:C:115:SER:HB3	1.89	0.55
1:A:65:VAL:HG21	1:A:115:SER:HB3	1.89	0.55
1:D:65:VAL:HG21	1:D:115:SER:HB3	1.88	0.55
1:D:363:PRO:HB3	1:D:388:SER:HA	1.89	0.55
1:A:300:ASN:OD1	1:A:441:GLY:HA2	2.06	0.55
1:A:357:LYS:HD2	1:A:466:GLU:HG2	1.88	0.55
1:B:65:VAL:HG21	1:B:115:SER:HB3	1.89	0.55
1:B:300:ASN:OD1	1:B:441:GLY:HA2	2.07	0.55
1:D:357:LYS:HD2	1:D:466:GLU:HG2	1.88	0.55
1:D:297:THR:HG1	1:D:444:THR:HG1	1.54	0.55
1:C:363:PRO:HB3	1:C:388:SER:HA	1.89	0.55
1:C:85:VAL:O	1:C:86:LEU:CG	2.53	0.55
1:C:300:ASN:OD1	1:C:441:GLY:HA2	2.07	0.55
1:A:363:PRO:HB3	1:A:388:SER:HA	1.88	0.54
1:B:357:LYS:HD2	1:B:466:GLU:HG2	1.88	0.54
1:D:342:LEU:HD22	1:D:361:PHE:CE2	2.42	0.54
1:C:61:TYR:CZ	1:D:213:ILE:HG22	2.42	0.54
1:D:300:ASN:OD1	1:D:441:GLY:HA2	2.07	0.54
1:A:349:LEU:HD13	1:A:468:PHE:CE2	2.43	0.54
1:B:342:LEU:HD22	1:B:361:PHE:CE2	2.42	0.54
1:C:349:LEU:HD13	1:C:468:PHE:CE2	2.43	0.54
1:D:327:ARG:HG2	1:D:420:ILE:O	2.08	0.54
1:C:327:ARG:HG2	1:C:420:ILE:O	2.08	0.54
1:B:408:ARG:HG2	1:B:409:SER:N	2.22	0.54
1:D:349:LEU:HD13	1:D:468:PHE:CE2	2.43	0.54
1:A:342:LEU:HD22	1:A:361:PHE:CE2	2.42	0.54
1:A:298:ARG:NH1	1:A:326:ILE:O	2.38	0.54
1:A:85:VAL:O	1:A:86:LEU:CG	2.53	0.54
1:A:408:ARG:HG2	1:A:409:SER:N	2.22	0.54
1:A:327:ARG:HG2	1:A:420:ILE:O	2.08	0.53
1:B:327:ARG:HG2	1:B:420:ILE:O	2.08	0.53
1:C:342:LEU:HD22	1:C:361:PHE:CE2	2.42	0.53
1:C:65:VAL:CG2	1:C:115:SER:HB3	2.38	0.53
1:D:207:LYS:HD2	1:D:439:ILE:CG2	2.39	0.53
1:A:65:VAL:CG2	1:A:115:SER:HB3	2.38	0.53
1:A:246:GLN:OE1	1:A:246:GLN:HA	2.08	0.53
1:B:65:VAL:CG2	1:B:115:SER:HB3	2.38	0.53
1:C:90:THR:O	1:C:90:THR:HG22	2.08	0.53
1:C:240:ARG:HD2	1:C:241:ASN:N	2.24	0.53
1:D:408:ARG:HG2	1:D:409:SER:N	2.22	0.53

Continued on next page...

Continued from previous page...

Atom-1	Atom-2	Interatomic distance (Å)	Clash overlap (Å)
1:D:65:VAL:CG2	1:D:115:SER:HB3	2.38	0.53
1:A:98:ASN:C	1:A:98:ASN:ND2	2.61	0.53
1:C:406:THR:CG2	5:C:652:HOH:O	2.56	0.53
1:A:90:THR:HG22	1:A:90:THR:O	2.08	0.53
1:A:362:GLU:HG2	2:A:505:NAG:C8	2.39	0.53
1:B:98:ASN:C	1:B:98:ASN:ND2	2.61	0.53
1:B:298:ARG:NH1	1:B:326:ILE:O	2.38	0.53
1:C:207:LYS:HD2	1:C:439:ILE:CG2	2.39	0.53
1:C:224:ALA:HB1	1:C:244:THR:CG2	2.39	0.53
1:C:240:ARG:HD2	1:C:241:ASN:H	1.74	0.53
1:A:456:ARG:HD2	1:A:466:GLU:OE2	2.09	0.53
1:B:349:LEU:HD13	1:B:468:PHE:CE2	2.43	0.53
1:D:362:GLU:HG2	2:D:505:NAG:C8	2.39	0.53
1:B:456:ARG:HD2	1:B:466:GLU:OE2	2.09	0.53
1:C:456:ARG:HD2	1:C:466:GLU:OE2	2.09	0.53
1:A:62:GLU:OE2	1:A:64:GLU:HB2	2.09	0.53
1:A:240:ARG:HD2	1:A:241:ASN:N	2.24	0.53
1:B:207:LYS:HD2	1:B:439:ILE:CG2	2.39	0.53
1:B:240:ARG:HD2	1:B:241:ASN:H	1.74	0.53
1:B:246:GLN:OE1	1:B:246:GLN:HA	2.09	0.53
1:C:408:ARG:HG2	1:C:409:SER:N	2.22	0.52
1:D:98:ASN:C	1:D:98:ASN:ND2	2.61	0.52
1:A:240:ARG:HD2	1:A:241:ASN:H	1.74	0.52
1:B:90:THR:HG22	1:B:90:THR:O	2.08	0.52
1:D:298:ARG:NH1	1:D:326:ILE:O	2.38	0.52
1:D:456:ARG:HD2	1:D:466:GLU:OE2	2.09	0.52
1:A:68:VAL:HG13	1:A:72:HIS:HE1	1.75	0.52
1:A:207:LYS:HD2	1:A:439:ILE:CG2	2.39	0.52
1:C:62:GLU:OE2	1:C:64:GLU:HB2	2.09	0.52
1:D:90:THR:HG22	1:D:90:THR:O	2.08	0.52
1:D:246:GLN:OE1	1:D:246:GLN:HA	2.08	0.52
1:B:224:ALA:HB1	1:B:244:THR:CG2	2.39	0.52
1:B:240:ARG:HD2	1:B:241:ASN:N	2.24	0.52
1:C:362:GLU:HG2	2:C:505:NAG:C8	2.39	0.52
1:B:85:VAL:O	1:B:86:LEU:CG	2.53	0.52
1:B:362:GLU:HG2	2:B:505:NAG:C8	2.39	0.52
1:D:269:GLU:O	1:D:271:ILE:HG12	2.10	0.52
1:A:224:ALA:HB1	1:A:244:THR:CG2	2.40	0.52
1:C:246:GLN:HA	1:C:246:GLN:OE1	2.08	0.52
1:A:232:THR:HA	1:A:271:ILE:HD11	1.91	0.52
1:B:93:PHE:CE2	1:B:228:CYS:HB2	2.45	0.52

Continued on next page...

Continued from previous page...

Atom-1	Atom-2	Interatomic distance (Å)	Clash overlap (Å)
1:D:240:ARG:HD2	1:D:241:ASN:N	2.24	0.51
1:B:232:THR:HA	1:B:271:ILE:HD11	1.92	0.51
1:C:269:GLU:O	1:C:271:ILE:HG12	2.10	0.51
1:D:240:ARG:HD2	1:D:241:ASN:HB3	1.93	0.51
1:D:240:ARG:HD2	1:D:241:ASN:H	1.74	0.51
1:D:224:ALA:HB1	1:D:244:THR:CG2	2.39	0.51
1:D:386:ASN:O	1:D:416:LEU:HD22	2.11	0.51
1:A:386:ASN:O	1:A:416:LEU:HD22	2.11	0.51
1:C:386:ASN:O	1:C:416:LEU:HD22	2.11	0.51
1:B:386:ASN:O	1:B:416:LEU:HD22	2.11	0.51
1:D:93:PHE:CE2	1:D:228:CYS:HB2	2.46	0.51
1:D:348:GLU:HA	1:D:351:LYS:HD2	1.92	0.51
1:A:348:GLU:HA	1:A:351:LYS:HD2	1.92	0.51
1:C:225:ILE:HB	1:C:245:VAL:HG23	1.93	0.50
1:C:379:ARG:NH1	5:C:603:HOH:O	2.44	0.50
1:B:240:ARG:HD2	1:B:241:ASN:HB3	1.93	0.50
1:B:464:ASP:HA	5:B:602:HOH:O	2.12	0.50
1:C:405:HIS:O	4:A:508:IMD:N3	2.44	0.50
1:B:98:ASN:ND2	1:B:100:MET:N	2.59	0.50
1:D:225:ILE:HB	1:D:245:VAL:HG23	1.93	0.50
1:B:225:ILE:HB	1:B:245:VAL:HG23	1.94	0.50
1:D:98:ASN:ND2	1:D:100:MET:N	2.59	0.50
1:C:348:GLU:HA	1:C:351:LYS:HD2	1.92	0.50
1:C:62:GLU:OE1	1:C:62:GLU:HA	2.12	0.50
1:B:348:GLU:HA	1:B:351:LYS:HD2	1.92	0.50
1:C:98:ASN:ND2	1:C:100:MET:N	2.59	0.49
1:C:240:ARG:HD2	1:C:241:ASN:HB3	1.93	0.49
1:C:432:ARG:NH2	1:B:422:GLN:CG	2.75	0.49
1:A:240:ARG:HD2	1:A:241:ASN:HB3	1.93	0.49
1:A:62:GLU:OE1	1:A:62:GLU:HA	2.12	0.49
1:B:277:LEU:HA	5:B:608:HOH:O	2.11	0.49
1:C:432:ARG:NH2	1:B:422:GLN:HG2	2.28	0.49
1:A:98:ASN:ND2	1:A:100:MET:N	2.59	0.49
1:C:98:ASN:C	1:C:98:ASN:ND2	2.61	0.49
1:B:240:ARG:HG2	5:B:640:HOH:O	2.13	0.48
1:A:93:PHE:CE2	1:A:228:CYS:HB2	2.48	0.48
1:A:225:ILE:HB	1:A:245:VAL:HG23	1.94	0.48
1:A:92:ASN:O	1:A:93:PHE:HD1	1.96	0.48
1:C:298:ARG:NH1	1:C:326:ILE:O	2.38	0.48
1:B:395:TYR:HA	1:B:399:THR:O	2.14	0.48
1:C:93:PHE:CE2	1:C:228:CYS:HB2	2.48	0.48

Continued on next page...

Continued from previous page...

Atom-1	Atom-2	Interatomic distance (Å)	Clash overlap (Å)
1:A:395:TYR:HA	1:A:399:THR:O	2.14	0.48
1:A:406:THR:HG21	5:A:648:HOH:O	2.14	0.48
1:C:92:ASN:O	1:C:93:PHE:HD1	1.96	0.48
1:C:434:ILE:HD11	1:B:434:ILE:HD12	1.96	0.47
1:B:93:PHE:CD1	1:B:93:PHE:N	2.82	0.47
1:A:331:CYS:O	1:A:415:THR:HA	2.15	0.47
1:D:59:LYS:CB	1:D:61:TYR:CE2	2.98	0.47
1:B:59:LYS:CB	1:B:61:TYR:CE2	2.98	0.47
1:C:59:LYS:CB	1:C:61:TYR:CE2	2.98	0.47
1:D:269:GLU:HA	1:D:289:ASN:ND2	2.29	0.47
1:A:91:GLU:HG2	1:A:487:LYS:NZ	2.30	0.47
1:A:269:GLU:HA	1:A:289:ASN:ND2	2.29	0.47
1:C:269:GLU:HA	1:C:289:ASN:HD22	1.79	0.47
1:C:331:CYS:O	1:C:415:THR:HA	2.15	0.47
1:C:389:ASP:OD1	1:C:408:ARG:N	2.48	0.47
1:D:92:ASN:O	1:D:93:PHE:HD1	1.97	0.47
1:D:295:VAL:O	1:D:331:CYS:HA	2.15	0.47
1:D:389:ASP:OD1	1:D:408:ARG:N	2.48	0.47
1:A:295:VAL:O	1:A:331:CYS:HA	2.15	0.47
1:B:295:VAL:O	1:B:331:CYS:HA	2.15	0.47
1:D:91:GLU:HG2	1:D:487:LYS:NZ	2.30	0.47
1:D:269:GLU:HA	1:D:289:ASN:HD22	1.79	0.47
1:D:395:TYR:HA	1:D:399:THR:O	2.14	0.47
1:A:63:LYS:HA	1:A:63:LYS:HD3	1.80	0.47
1:B:269:GLU:HA	1:B:289:ASN:HD22	1.79	0.47
1:B:389:ASP:OD1	1:B:408:ARG:N	2.48	0.47
1:B:409:SER:OG	1:B:410:SER:N	2.48	0.47
1:D:111:LEU:C	1:D:111:LEU:HD23	2.36	0.47
1:A:59:LYS:CB	1:A:61:TYR:CE2	2.98	0.47
1:A:389:ASP:OD1	1:A:408:ARG:N	2.48	0.47
1:C:269:GLU:HA	1:C:289:ASN:ND2	2.29	0.47
1:C:395:TYR:HA	1:C:399:THR:O	2.14	0.47
1:A:98:ASN:HD22	1:A:100:MET:N	2.13	0.47
1:B:92:ASN:O	1:B:93:PHE:HD1	1.97	0.47
1:C:91:GLU:HG2	1:C:487:LYS:NZ	2.30	0.46
1:C:98:ASN:HD22	1:C:100:MET:H	1.63	0.46
1:C:342:LEU:HD22	1:C:361:PHE:CD2	2.51	0.46
1:D:93:PHE:CD1	1:D:93:PHE:N	2.82	0.46
1:A:111:LEU:HD23	1:A:111:LEU:C	2.36	0.46
1:A:269:GLU:HA	1:A:289:ASN:HD22	1.79	0.46
1:B:269:GLU:HA	1:B:289:ASN:ND2	2.29	0.46

Continued on next page...

Continued from previous page...

Atom-1	Atom-2	Interatomic distance (Å)	Clash overlap (Å)
1:B:98:ASN:HD22	1:B:100:MET:H	1.63	0.46
1:B:331:CYS:O	1:B:415:THR:HA	2.15	0.46
1:B:342:LEU:HD22	1:B:361:PHE:CD2	2.50	0.46
1:C:111:LEU:HD23	1:C:111:LEU:C	2.36	0.46
1:D:98:ASN:HD22	1:D:100:MET:H	1.63	0.46
1:B:268:GLU:HB3	1:B:269:GLU:HG2	1.97	0.46
1:C:220:PRO:HG2	1:C:223:PHE:HD2	1.81	0.46
1:C:409:SER:OG	1:C:410:SER:N	2.48	0.46
1:B:63:LYS:HA	1:B:63:LYS:HD3	1.80	0.46
1:C:98:ASN:HD22	1:C:100:MET:N	2.13	0.46
1:A:220:PRO:HG2	1:A:223:PHE:HD2	1.81	0.46
1:A:409:SER:OG	1:A:410:SER:N	2.48	0.46
1:B:50:THR:HG21	1:B:223:PHE:CD2	2.51	0.46
1:B:111:LEU:C	1:B:111:LEU:HD23	2.36	0.46
1:C:59:LYS:HB3	1:C:61:TYR:CE2	2.51	0.46
1:D:240:ARG:HH11	1:D:241:ASN:CB	2.29	0.46
1:D:331:CYS:O	1:D:415:THR:HA	2.15	0.46
1:A:68:VAL:O	1:A:72:HIS:ND1	2.48	0.46
1:A:98:ASN:HD22	1:A:100:MET:H	1.63	0.46
1:B:252:LYS:O	1:B:254:VAL:HG23	2.16	0.46
1:B:91:GLU:HG2	1:B:487:LYS:NZ	2.30	0.46
1:C:295:VAL:O	1:C:331:CYS:HA	2.15	0.46
1:D:220:PRO:HG2	1:D:223:PHE:HD2	1.81	0.46
1:D:409:SER:OG	1:D:410:SER:N	2.48	0.46
1:A:49:LYS:CE	5:A:617:HOH:O	2.60	0.46
1:A:342:LEU:HD22	1:A:361:PHE:CD2	2.51	0.46
1:B:98:ASN:HD22	1:B:100:MET:N	2.13	0.46
1:D:98:ASN:HD22	1:D:100:MET:N	2.13	0.46
2:C:505:NAG:C6	1:A:404:ASN:HD22	2.27	0.45
1:D:50:THR:HG21	1:D:223:PHE:CD2	2.51	0.45
1:A:240:ARG:HH11	1:A:241:ASN:CB	2.29	0.45
1:B:220:PRO:HG2	1:B:223:PHE:HD2	1.81	0.45
1:D:336:SER:O	1:D:339:ASN:HB2	2.16	0.45
1:A:50:THR:HG21	1:A:223:PHE:CD2	2.51	0.45
1:A:98:ASN:HD22	1:A:99:ASP:N	2.14	0.45
1:A:290:GLU:OE2	1:A:337:LYS:NZ	2.23	0.45
1:B:98:ASN:HD22	1:B:99:ASP:N	2.14	0.45
1:D:252:LYS:O	1:D:254:VAL:HG23	2.16	0.45
1:A:336:SER:O	1:A:339:ASN:HB2	2.17	0.45
1:D:342:LEU:HD22	1:D:361:PHE:CD2	2.51	0.45
1:C:98:ASN:HD22	1:C:99:ASP:N	2.14	0.45

Continued on next page...

Continued from previous page...

Atom-1	Atom-2	Interatomic distance (Å)	Clash overlap (Å)
1:C:98:ASN:HD21	1:C:100:MET:CB	2.30	0.45
1:A:252:LYS:O	1:A:254:VAL:HG23	2.16	0.45
1:C:240:ARG:HH11	1:C:241:ASN:CB	2.29	0.45
1:C:336:SER:O	1:C:339:ASN:HB2	2.16	0.45
1:C:50:THR:HG21	1:C:223:PHE:CD2	2.51	0.45
1:D:98:ASN:HD22	1:D:99:ASP:N	2.14	0.45
1:B:336:SER:O	1:B:339:ASN:HB2	2.16	0.45
1:B:240:ARG:HH11	1:B:241:ASN:CB	2.29	0.45
1:B:59:LYS:HG2	1:B:61:TYR:OH	2.17	0.45
1:C:252:LYS:O	1:C:254:VAL:HG23	2.16	0.45
1:C:80:ASN:ND2	1:D:442:GLU:HB2	2.31	0.44
1:A:59:LYS:HG2	1:A:61:TYR:OH	2.17	0.44
1:C:257:THR:O	1:C:259:LEU:N	2.50	0.44
1:C:360:LYS:HD3	1:C:465:THR:HG21	2.00	0.44
1:B:91:GLU:HG2	1:B:487:LYS:HZ3	1.82	0.44
1:B:98:ASN:HD21	1:B:100:MET:CB	2.30	0.44
1:B:85:VAL:C	1:B:86:LEU:HG	2.37	0.44
1:D:426:MET:CE	1:D:431:GLY:HA3	2.48	0.44
1:A:98:ASN:HD21	1:A:100:MET:CB	2.30	0.44
1:C:80:ASN:OD1	1:D:300:ASN:HB3	2.17	0.44
1:C:378:CYS:HB3	1:C:383:PHE:CE1	2.53	0.44
1:A:85:VAL:C	1:A:86:LEU:HG	2.37	0.44
1:B:426:MET:CE	1:B:431:GLY:HA3	2.48	0.44
1:D:59:LYS:HG2	1:D:61:TYR:OH	2.17	0.44
1:A:353:PHE:HA	1:A:354:PRO:HD3	1.79	0.44
1:C:60:ALA:CA	1:D:59:LYS:HE2	2.48	0.43
1:C:85:VAL:C	1:C:86:LEU:HG	2.37	0.43
1:D:338:TRP:NE1	1:D:342:LEU:CD1	2.81	0.43
1:C:241:ASN:ND2	5:C:602:HOH:O	2.42	0.43
1:C:426:MET:CE	1:C:431:GLY:HA3	2.48	0.43
1:D:98:ASN:HD21	1:D:100:MET:CB	2.30	0.43
1:B:338:TRP:NE1	1:B:342:LEU:CD1	2.81	0.43
1:D:419:LYS:HD3	1:D:421:LYS:CG	2.47	0.43
1:A:360:LYS:HD3	1:A:465:THR:HG21	2.00	0.43
1:A:378:CYS:HB3	1:A:383:PHE:CE1	2.53	0.43
1:C:80:ASN:HB2	1:D:442:GLU:N	2.30	0.43
1:C:90:THR:OG1	1:C:240:ARG:HA	2.19	0.43
1:B:90:THR:OG1	1:B:240:ARG:HA	2.19	0.43
1:D:92:ASN:C	1:D:93:PHE:CD1	2.90	0.43
1:B:257:THR:O	1:B:259:LEU:N	2.50	0.43
1:B:360:LYS:HD3	1:B:465:THR:HG21	2.00	0.43

Continued on next page...

Continued from previous page...

Atom-1	Atom-2	Interatomic distance (Å)	Clash overlap (Å)
1:C:123:THR:HG22	1:C:431:GLY:HA3	2.01	0.43
1:D:123:THR:HG22	1:D:431:GLY:HA3	2.01	0.43
1:A:50:THR:HG1	1:A:223:PHE:HE2	1.64	0.43
1:A:275:GLU:OE2	1:A:282:LYS:CE	2.67	0.43
1:C:275:GLU:OE2	1:C:282:LYS:CE	2.67	0.43
1:C:338:TRP:NE1	1:C:342:LEU:CD1	2.81	0.43
1:D:360:LYS:HD3	1:D:465:THR:HG21	2.00	0.43
1:D:378:CYS:HB3	1:D:383:PHE:CE1	2.53	0.43
1:A:419:LYS:HD3	1:A:421:LYS:CG	2.47	0.43
1:A:257:THR:O	1:A:259:LEU:N	2.51	0.43
1:D:85:VAL:C	1:D:86:LEU:HG	2.37	0.42
1:A:426:MET:CE	1:A:431:GLY:HA3	2.48	0.42
1:B:123:THR:HG22	1:B:431:GLY:HA3	2.01	0.42
1:A:90:THR:OG1	1:A:240:ARG:HA	2.19	0.42
1:D:257:THR:O	1:D:259:LEU:N	2.50	0.42
1:D:423:ILE:C	1:D:424:ILE:HD13	2.40	0.42
1:A:65:VAL:HB	1:A:115:SER:HB3	2.01	0.42
1:A:224:ALA:HB1	1:A:244:THR:HG22	2.01	0.42
1:B:378:CYS:HB3	1:B:383:PHE:CE1	2.53	0.42
1:C:423:ILE:C	1:C:424:ILE:HD13	2.40	0.42
1:A:338:TRP:NE1	1:A:342:LEU:CD1	2.81	0.42
1:B:92:ASN:C	1:B:93:PHE:CD1	2.90	0.42
1:C:404:ASN:HD22	2:A:505:NAG:C6	2.24	0.42
1:C:419:LYS:HD3	1:C:421:LYS:CG	2.47	0.42
1:D:63:LYS:HA	1:D:63:LYS:HD3	1.80	0.42
1:A:52:LEU:HD23	1:A:52:LEU:HA	1.79	0.42
1:D:270:ILE:HG12	1:D:288:LEU:HA	2.02	0.42
1:B:270:ILE:HG12	1:B:288:LEU:HA	2.02	0.42
1:D:90:THR:OG1	1:D:240:ARG:HA	2.19	0.42
1:A:104:MET:O	1:A:108:ILE:HG12	2.20	0.42
1:D:104:MET:O	1:D:108:ILE:HG12	2.20	0.42
1:B:104:MET:O	1:B:108:ILE:HG12	2.20	0.42
1:B:275:GLU:OE2	1:B:282:LYS:CE	2.67	0.42
1:D:353:PHE:HA	1:D:354:PRO:HD3	1.79	0.42
1:A:123:THR:HG22	1:A:431:GLY:HA3	2.01	0.42
1:D:269:GLU:H	1:D:269:GLU:HG2	1.52	0.41
1:B:65:VAL:HB	1:B:115:SER:HB3	2.01	0.41
1:C:59:LYS:HG2	1:C:61:TYR:CE2	2.56	0.41
1:C:65:VAL:HB	1:C:115:SER:HB3	2.01	0.41
1:C:353:PHE:HA	1:C:354:PRO:HD3	1.79	0.41
1:B:423:ILE:C	1:B:424:ILE:HD13	2.40	0.41

Continued on next page...

Continued from previous page...

Atom-1	Atom-2	Interatomic distance (Å)	Clash overlap (Å)
1:D:65:VAL:HB	1:D:115:SER:HB3	2.02	0.41
1:A:270:ILE:HG12	1:A:288:LEU:HA	2.02	0.41
1:A:423:ILE:C	1:A:424:ILE:HD13	2.40	0.41
1:C:63:LYS:HA	1:C:63:LYS:HD3	1.80	0.41
1:C:104:MET:O	1:C:108:ILE:HG12	2.20	0.41
1:C:292:VAL:HG22	1:C:337:LYS:HG2	2.03	0.41
1:B:226:LEU:HG	1:B:489:VAL:CG1	2.48	0.41
1:C:61:TYR:CA	1:D:59:LYS:HE3	2.49	0.41
1:D:69:TRP:CD1	1:D:114:GLU:OE1	2.74	0.41
1:A:69:TRP:CD1	1:A:114:GLU:OE1	2.74	0.41
1:C:270:ILE:HG12	1:C:288:LEU:HA	2.02	0.41
1:A:226:LEU:HD23	1:A:226:LEU:HA	1.87	0.41
1:B:226:LEU:HD23	1:B:226:LEU:HA	1.87	0.41
1:C:85:VAL:HG12	1:C:86:LEU:H	1.86	0.41
1:D:406:THR:O	1:D:406:THR:HG22	2.21	0.41
1:D:85:VAL:HG12	1:D:86:LEU:H	1.86	0.40
1:B:69:TRP:CD1	1:B:114:GLU:OE1	2.74	0.40
1:C:404:ASN:ND2	2:A:505:NAG:C6	2.82	0.40
1:A:406:THR:O	1:A:406:THR:HG22	2.21	0.40
1:A:344:LYS:HZ3	2:A:503:NAG:C8	2.35	0.40
1:C:224:ALA:HB1	1:C:244:THR:HG22	2.04	0.40
1:A:349:LEU:HD13	1:A:468:PHE:CZ	2.57	0.40
1:B:255:VAL:HG13	1:B:475:MET:SD	2.62	0.40

All (1) symmetry-related close contacts are listed below. The label for Atom-2 includes the symmetry operator and encoded unit-cell translations to be applied.

Atom-1	Atom-2	Interatomic distance (Å)	Clash overlap (Å)
1:C:201:ILE:CD1	1:A:201:ILE:CD1[2_455]	2.16	0.04

5.3 Torsion angles [i](#)

5.3.1 Protein backbone [i](#)

In the following table, the Percentiles column shows the percent Ramachandran outliers of the chain as a percentile score with respect to all X-ray entries followed by that with respect to entries of similar resolution.

The Analysed column shows the number of residues for which the backbone conformation was analysed, and the total number of residues.

Mol	Chain	Analysed	Favoured	Allowed	Outliers	Percentiles	
1	A	329/358 (92%)	306 (93%)	18 (6%)	5 (2%)	10	16
1	B	329/358 (92%)	306 (93%)	18 (6%)	5 (2%)	10	16
1	C	329/358 (92%)	306 (93%)	18 (6%)	5 (2%)	10	16
1	D	329/358 (92%)	306 (93%)	18 (6%)	5 (2%)	10	16
All	All	1316/1432 (92%)	1224 (93%)	72 (6%)	20 (2%)	10	16

All (20) Ramachandran outliers are listed below:

Mol	Chain	Res	Type
1	C	439	ILE
1	D	439	ILE
1	A	439	ILE
1	B	439	ILE
1	C	86	LEU
1	C	90	THR
1	C	365	SER
1	D	86	LEU
1	D	90	THR
1	D	365	SER
1	A	86	LEU
1	A	90	THR
1	A	365	SER
1	B	86	LEU
1	B	90	THR
1	B	365	SER
1	C	354	PRO
1	D	354	PRO
1	A	354	PRO
1	B	354	PRO

5.3.2 Protein sidechains [i](#)

In the following table, the Percentiles column shows the percent sidechain outliers of the chain as a percentile score with respect to all X-ray entries followed by that with respect to entries of similar resolution.

The Analysed column shows the number of residues for which the sidechain conformation was analysed, and the total number of residues.

Mol	Chain	Analysed	Rotameric	Outliers	Percentiles	
1	A	297/312 (95%)	285 (96%)	12 (4%)	31	53

Continued on next page...

Continued from previous page...

Mol	Chain	Analysed	Rotameric	Outliers	Percentiles	
1	B	297/312 (95%)	285 (96%)	12 (4%)	31	53
1	C	297/312 (95%)	284 (96%)	13 (4%)	28	49
1	D	297/312 (95%)	287 (97%)	10 (3%)	37	61
All	All	1188/1248 (95%)	1141 (96%)	47 (4%)	31	53

All (47) residues with a non-rotameric sidechain are listed below:

Mol	Chain	Res	Type
1	C	51	THR
1	C	59	LYS
1	C	62	GLU
1	C	72	HIS
1	C	77	THR
1	C	93	PHE
1	C	98	ASN
1	C	356	SER
1	C	359	ILE
1	C	409	SER
1	C	419	LYS
1	C	447	SER
1	C	480	ARG
1	D	59	LYS
1	D	72	HIS
1	D	93	PHE
1	D	98	ASN
1	D	336	SER
1	D	356	SER
1	D	409	SER
1	D	419	LYS
1	D	447	SER
1	D	480	ARG
1	A	59	LYS
1	A	62	GLU
1	A	72	HIS
1	A	77	THR
1	A	93	PHE
1	A	98	ASN
1	A	271	ILE
1	A	356	SER
1	A	409	SER
1	A	419	LYS

Continued on next page...

Continued from previous page...

Mol	Chain	Res	Type
1	A	447	SER
1	A	480	ARG
1	B	59	LYS
1	B	72	HIS
1	B	93	PHE
1	B	97	LYS
1	B	98	ASN
1	B	269	GLU
1	B	271	ILE
1	B	336	SER
1	B	356	SER
1	B	409	SER
1	B	447	SER
1	B	489	VAL

Sometimes sidechains can be flipped to improve hydrogen bonding and reduce clashes. All (10) such sidechains are listed below:

Mol	Chain	Res	Type
1	C	98	ASN
1	C	241	ASN
1	C	404	ASN
1	D	98	ASN
1	D	241	ASN
1	A	98	ASN
1	A	241	ASN
1	A	404	ASN
1	B	98	ASN
1	B	241	ASN

5.3.3 RNA [i](#)

There are no RNA molecules in this entry.

5.4 Non-standard residues in protein, DNA, RNA chains [i](#)

There are no non-standard protein/DNA/RNA residues in this entry.

5.5 Carbohydrates [i](#)

There are no monosaccharides in this entry.

5.6 Ligand geometry [i](#)

29 ligands are modelled in this entry.

In the following table, the Counts columns list the number of bonds (or angles) for which Mogul statistics could be retrieved, the number of bonds (or angles) that are observed in the model and the number of bonds (or angles) that are defined in the Chemical Component Dictionary. The Link column lists molecule types, if any, to which the group is linked. The Z score for a bond length (or angle) is the number of standard deviations the observed value is removed from the expected value. A bond length (or angle) with $|Z| > 2$ is considered an outlier worth inspection. RMSZ is the root-mean-square of all Z scores of the bond lengths (or angles).

Mol	Type	Chain	Res	Link	Bond lengths			Bond angles		
					Counts	RMSZ	# Z > 2	Counts	RMSZ	# Z > 2
2	NAG	B	503	1	14,14,15	0.82	1 (7%)	17,19,21	0.64	0
2	NAG	C	503	1	14,14,15	0.82	1 (7%)	17,19,21	0.64	0
2	NAG	C	506	1	14,14,15	1.12	2 (14%)	17,19,21	1.18	2 (11%)
2	NAG	B	504	1	14,14,15	0.92	1 (7%)	17,19,21	0.58	0
2	NAG	A	501	1	14,14,15	0.43	0	17,19,21	0.49	0
2	NAG	A	503	1	14,14,15	0.82	1 (7%)	17,19,21	0.64	0
3	Y1T	A	507	-	48,49,49	2.21	12 (25%)	65,71,71	2.41	24 (36%)
2	NAG	A	504	1	14,14,15	0.92	1 (7%)	17,19,21	0.58	0
4	IMD	A	508	-	3,5,5	0.47	0	4,5,5	0.66	0
2	NAG	B	505	1	14,14,15	0.76	0	17,19,21	0.48	0
3	Y1T	B	507	-	48,49,49	2.21	12 (25%)	65,71,71	2.41	24 (36%)
3	Y1T	C	507	-	48,49,49	2.21	11 (22%)	65,71,71	2.41	24 (36%)
2	NAG	D	502	1	14,14,15	0.35	0	17,19,21	0.97	1 (5%)
2	NAG	B	501	1	14,14,15	0.43	0	17,19,21	0.49	0
2	NAG	B	502	1	14,14,15	0.35	0	17,19,21	0.97	1 (5%)
2	NAG	C	505	1	14,14,15	0.75	0	17,19,21	0.48	0
2	NAG	A	505	1	14,14,15	0.76	0	17,19,21	0.48	0
2	NAG	A	506	1	14,14,15	1.12	2 (14%)	17,19,21	1.18	2 (11%)
2	NAG	C	504	1	14,14,15	0.92	1 (7%)	17,19,21	0.58	0
2	NAG	D	504	1	14,14,15	0.92	1 (7%)	17,19,21	0.58	0
2	NAG	C	502	1	14,14,15	0.35	0	17,19,21	0.97	1 (5%)
2	NAG	B	506	1	14,14,15	1.12	2 (14%)	17,19,21	1.18	2 (11%)
2	NAG	D	503	1	14,14,15	0.82	1 (7%)	17,19,21	0.64	0
3	Y1T	D	507	-	48,49,49	2.21	12 (25%)	65,71,71	2.41	24 (36%)
2	NAG	D	506	1	14,14,15	1.12	2 (14%)	17,19,21	1.18	2 (11%)
2	NAG	A	502	1	14,14,15	0.35	0	17,19,21	0.97	1 (5%)
2	NAG	D	501	1	14,14,15	0.43	0	17,19,21	0.49	0

Mol	Type	Chain	Res	Link	Bond lengths			Bond angles		
					Counts	RMSZ	# Z > 2	Counts	RMSZ	# Z > 2
2	NAG	C	501	1	14,14,15	0.43	0	17,19,21	0.49	0
2	NAG	D	505	1	14,14,15	0.76	0	17,19,21	0.48	0

In the following table, the Chirals column lists the number of chiral outliers, the number of chiral centers analysed, the number of these observed in the model and the number defined in the Chemical Component Dictionary. Similar counts are reported in the Torsion and Rings columns. '2' means no outliers of that kind were identified.

Mol	Type	Chain	Res	Link	Chirals	Torsions	Rings
2	NAG	B	503	1	-	5/6/23/26	0/1/1/1
2	NAG	C	503	1	-	5/6/23/26	0/1/1/1
2	NAG	C	506	1	-	2/6/23/26	0/1/1/1
2	NAG	B	504	1	-	0/6/23/26	0/1/1/1
2	NAG	A	501	1	-	2/6/23/26	0/1/1/1
2	NAG	A	503	1	-	5/6/23/26	0/1/1/1
3	Y1T	A	507	-	-	2/28/45/45	0/4/4/4
2	NAG	A	504	1	-	0/6/23/26	0/1/1/1
4	IMD	A	508	-	-	-	0/1/1/1
2	NAG	B	505	1	-	2/6/23/26	0/1/1/1
3	Y1T	B	507	-	-	2/28/45/45	0/4/4/4
3	Y1T	C	507	-	-	2/28/45/45	0/4/4/4
2	NAG	D	502	1	-	2/6/23/26	0/1/1/1
2	NAG	B	501	1	-	2/6/23/26	0/1/1/1
2	NAG	B	502	1	-	2/6/23/26	0/1/1/1
2	NAG	C	505	1	-	2/6/23/26	0/1/1/1
2	NAG	A	505	1	-	2/6/23/26	0/1/1/1
2	NAG	A	506	1	-	2/6/23/26	0/1/1/1
2	NAG	C	504	1	-	0/6/23/26	0/1/1/1
2	NAG	D	504	1	-	0/6/23/26	0/1/1/1
2	NAG	C	502	1	-	2/6/23/26	0/1/1/1
2	NAG	B	506	1	-	2/6/23/26	0/1/1/1
2	NAG	D	503	1	-	5/6/23/26	0/1/1/1
3	Y1T	D	507	-	-	2/28/45/45	0/4/4/4
2	NAG	D	506	1	-	2/6/23/26	0/1/1/1
2	NAG	A	502	1	-	2/6/23/26	0/1/1/1
2	NAG	D	501	1	-	2/6/23/26	0/1/1/1
2	NAG	C	501	1	-	2/6/23/26	0/1/1/1

Continued on next page...

Continued from previous page...

Mol	Type	Chain	Res	Link	Chirals	Torsions	Rings
2	NAG	D	505	1	-	2/6/23/26	0/1/1/1

All (63) bond length outliers are listed below:

Mol	Chain	Res	Type	Atoms	Z	Observed(Å)	Ideal(Å)
3	B	507	Y1T	C37-N36	6.53	1.46	1.33
3	C	507	Y1T	C37-N36	6.53	1.46	1.33
3	D	507	Y1T	C37-N36	6.53	1.46	1.33
3	A	507	Y1T	C37-N36	6.52	1.46	1.33
3	B	507	Y1T	C19-N18	5.35	1.45	1.37
3	C	507	Y1T	C19-N18	5.35	1.45	1.37
3	A	507	Y1T	C19-N18	5.35	1.45	1.37
3	D	507	Y1T	C19-N18	5.35	1.45	1.37
3	C	507	Y1T	C15-C34	-5.16	1.49	1.55
3	D	507	Y1T	C15-C34	-5.16	1.49	1.55
3	B	507	Y1T	C15-C34	-5.16	1.49	1.55
3	A	507	Y1T	C15-C34	-5.16	1.49	1.55
3	D	507	Y1T	C02-N14	4.79	1.43	1.34
3	C	507	Y1T	C02-N14	4.78	1.43	1.34
3	B	507	Y1T	C02-N14	4.78	1.43	1.34
3	A	507	Y1T	C02-N14	4.78	1.43	1.34
3	A	507	Y1T	C03-N04	4.58	1.45	1.35
3	C	507	Y1T	C03-N04	4.58	1.45	1.35
3	D	507	Y1T	C03-N04	4.58	1.45	1.35
3	B	507	Y1T	C03-N04	4.58	1.45	1.35
3	D	507	Y1T	C17-N18	4.46	1.49	1.40
3	A	507	Y1T	C17-N18	4.46	1.49	1.40
3	B	507	Y1T	C17-N18	4.46	1.49	1.40
3	C	507	Y1T	C17-N18	4.45	1.49	1.40
3	A	507	Y1T	C37-N38	3.35	1.45	1.32
3	B	507	Y1T	C37-N38	3.34	1.45	1.32
3	C	507	Y1T	C37-N38	3.34	1.45	1.32
3	D	507	Y1T	C37-N38	3.34	1.45	1.32
2	C	506	NAG	O5-C1	-3.26	1.38	1.43
2	B	506	NAG	O5-C1	-3.26	1.38	1.43
2	A	506	NAG	O5-C1	-3.26	1.38	1.43
2	D	506	NAG	O5-C1	-3.25	1.38	1.43
2	A	504	NAG	O5-C1	3.11	1.48	1.43
2	B	504	NAG	O5-C1	3.11	1.48	1.43
2	D	504	NAG	O5-C1	3.11	1.48	1.43
2	C	504	NAG	O5-C1	3.11	1.48	1.43
3	D	507	Y1T	O20-C19	3.02	1.40	1.34

Continued on next page...

Continued from previous page...

Mol	Chain	Res	Type	Atoms	Z	Observed(Å)	Ideal(Å)
3	B	507	Y1T	O20-C19	3.02	1.40	1.34
3	C	507	Y1T	O20-C19	3.02	1.40	1.34
3	A	507	Y1T	O20-C19	3.02	1.40	1.34
3	C	507	Y1T	O01-C02	-2.42	1.19	1.23
3	D	507	Y1T	O01-C02	-2.42	1.19	1.23
3	B	507	Y1T	O01-C02	-2.41	1.19	1.23
3	A	507	Y1T	O01-C02	-2.41	1.19	1.23
2	D	503	NAG	C2-N2	-2.24	1.42	1.46
2	A	503	NAG	C2-N2	-2.23	1.42	1.46
2	C	503	NAG	C2-N2	-2.23	1.42	1.46
2	B	503	NAG	C2-N2	-2.23	1.42	1.46
3	B	507	Y1T	F32-C31	2.18	1.38	1.35
3	D	507	Y1T	F32-C31	2.18	1.38	1.35
3	C	507	Y1T	F32-C31	2.18	1.38	1.35
3	A	507	Y1T	F32-C31	2.17	1.38	1.35
2	A	506	NAG	C1-C2	2.10	1.55	1.52
2	D	506	NAG	C1-C2	2.10	1.55	1.52
2	B	506	NAG	C1-C2	2.10	1.55	1.52
2	C	506	NAG	C1-C2	2.10	1.55	1.52
3	B	507	Y1T	C37-N39	-2.02	1.26	1.34
3	C	507	Y1T	C37-N39	-2.02	1.26	1.34
3	D	507	Y1T	C37-N39	-2.02	1.26	1.34
3	A	507	Y1T	C37-N39	-2.02	1.26	1.34
3	D	507	Y1T	O13-C03	-2.01	1.19	1.23
3	A	507	Y1T	O13-C03	-2.00	1.19	1.23
3	B	507	Y1T	O13-C03	-2.00	1.19	1.23

All (108) bond angle outliers are listed below:

Mol	Chain	Res	Type	Atoms	Z	Observed(°)	Ideal(°)
3	B	507	Y1T	C34-C15-N14	-11.25	102.72	115.01
3	C	507	Y1T	C34-C15-N14	-11.25	102.72	115.01
3	A	507	Y1T	C34-C15-N14	-11.24	102.72	115.01
3	D	507	Y1T	C34-C15-N14	-11.24	102.73	115.01
3	C	507	Y1T	C16-C15-N14	-7.04	103.31	114.61
3	D	507	Y1T	C16-C15-N14	-7.04	103.31	114.61
3	B	507	Y1T	C16-C15-N14	-7.04	103.32	114.61
3	A	507	Y1T	C16-C15-N14	-7.04	103.32	114.61
3	D	507	Y1T	C05-N04-C03	-3.94	120.70	127.53
3	A	507	Y1T	C05-N04-C03	-3.93	120.70	127.53
3	C	507	Y1T	C05-N04-C03	-3.93	120.70	127.53
3	B	507	Y1T	C05-N04-C03	-3.93	120.70	127.53

Continued on next page...

Continued from previous page...

Mol	Chain	Res	Type	Atoms	Z	Observed(°)	Ideal(°)
3	D	507	Y1T	O20-C19-N18	3.77	116.73	111.07
3	A	507	Y1T	O20-C19-N18	3.77	116.72	111.07
3	C	507	Y1T	O20-C19-N18	3.77	116.72	111.07
3	B	507	Y1T	O20-C19-N18	3.77	116.72	111.07
3	D	507	Y1T	C31-C22-C23	3.47	120.00	115.90
3	B	507	Y1T	C31-C22-C23	3.46	120.00	115.90
3	C	507	Y1T	C31-C22-C23	3.46	120.00	115.90
3	A	507	Y1T	C31-C22-C23	3.46	120.00	115.90
2	A	506	NAG	C4-C3-C2	3.40	116.00	111.02
2	B	506	NAG	C4-C3-C2	3.40	116.00	111.02
2	D	506	NAG	C4-C3-C2	3.40	116.00	111.02
2	C	506	NAG	C4-C3-C2	3.40	116.00	111.02
2	A	502	NAG	C1-O5-C5	3.36	116.75	112.19
2	B	502	NAG	C1-O5-C5	3.36	116.74	112.19
2	D	502	NAG	C1-O5-C5	3.36	116.74	112.19
2	C	502	NAG	C1-O5-C5	3.36	116.74	112.19
3	C	507	Y1T	C16-C15-C34	3.07	106.37	102.76
3	A	507	Y1T	C16-C15-C34	3.07	106.37	102.76
3	B	507	Y1T	C16-C15-C34	3.06	106.36	102.76
3	D	507	Y1T	C16-C15-C34	3.06	106.36	102.76
3	B	507	Y1T	O20-C21-C22	-3.02	102.88	107.69
3	A	507	Y1T	O20-C21-C22	-3.02	102.88	107.69
3	D	507	Y1T	O20-C21-C22	-3.02	102.88	107.69
3	C	507	Y1T	O20-C21-C22	-3.02	102.89	107.69
3	A	507	Y1T	C40-C17-N18	2.96	133.57	128.50
3	B	507	Y1T	C40-C17-N18	2.96	133.57	128.50
3	C	507	Y1T	C40-C17-N18	2.96	133.57	128.50
3	D	507	Y1T	C40-C17-N18	2.96	133.56	128.50
3	C	507	Y1T	C05-C12-C10	-2.88	116.40	118.76
3	A	507	Y1T	C05-C12-C10	-2.88	116.40	118.76
3	D	507	Y1T	C05-C12-C10	-2.88	116.40	118.76
3	B	507	Y1T	C05-C12-C10	-2.88	116.40	118.76
3	D	507	Y1T	C16-C17-N18	-2.83	106.97	109.41
2	D	506	NAG	C3-C4-C5	2.83	115.28	110.24
2	C	506	NAG	C3-C4-C5	2.83	115.28	110.24
3	B	507	Y1T	C16-C17-N18	-2.83	106.97	109.41
3	A	507	Y1T	C16-C17-N18	-2.83	106.97	109.41
2	B	506	NAG	C3-C4-C5	2.83	115.28	110.24
2	A	506	NAG	C3-C4-C5	2.82	115.28	110.24
3	C	507	Y1T	C16-C17-N18	-2.82	106.97	109.41
3	D	507	Y1T	C06-C07-C08	-2.66	116.16	120.00
3	A	507	Y1T	C06-C07-C08	-2.66	116.16	120.00

Continued on next page...

Continued from previous page...

Mol	Chain	Res	Type	Atoms	Z	Observed(°)	Ideal(°)
3	C	507	Y1T	C06-C07-C08	-2.66	116.16	120.00
3	B	507	Y1T	C06-C07-C08	-2.65	116.17	120.00
3	D	507	Y1T	C15-N14-C02	-2.61	118.12	122.32
3	C	507	Y1T	C15-N14-C02	-2.61	118.12	122.32
3	A	507	Y1T	C15-N14-C02	-2.60	118.12	122.32
3	B	507	Y1T	C15-N14-C02	-2.60	118.12	122.32
3	C	507	Y1T	C02-C03-N04	2.60	116.42	112.31
3	A	507	Y1T	C02-C03-N04	2.60	116.42	112.31
3	B	507	Y1T	C02-C03-N04	2.60	116.42	112.31
3	D	507	Y1T	C02-C03-N04	2.59	116.41	112.31
3	D	507	Y1T	C22-C23-C25	-2.59	119.31	122.37
3	B	507	Y1T	C22-C23-C25	-2.58	119.32	122.37
3	C	507	Y1T	C22-C23-C25	-2.58	119.32	122.37
3	A	507	Y1T	C22-C23-C25	-2.58	119.32	122.37
3	D	507	Y1T	C10-C08-CL09	-2.37	116.91	119.78
3	A	507	Y1T	C10-C08-CL09	-2.37	116.91	119.78
3	B	507	Y1T	C10-C08-CL09	-2.37	116.91	119.78
3	C	507	Y1T	C10-C08-CL09	-2.37	116.92	119.78
3	C	507	Y1T	C12-C10-C08	2.36	123.99	121.72
3	B	507	Y1T	C12-C10-C08	2.36	123.99	121.72
3	A	507	Y1T	C12-C10-C08	2.35	123.98	121.72
3	D	507	Y1T	C12-C10-C08	2.35	123.98	121.72
3	B	507	Y1T	F11-C10-C08	-2.31	116.85	118.98
3	C	507	Y1T	F11-C10-C08	-2.31	116.85	118.98
3	D	507	Y1T	F11-C10-C08	-2.31	116.85	118.98
3	A	507	Y1T	F11-C10-C08	-2.31	116.85	118.98
3	A	507	Y1T	C07-C06-C05	2.30	122.95	120.30
3	D	507	Y1T	C07-C06-C05	2.29	122.95	120.30
3	C	507	Y1T	C07-C06-C05	2.29	122.94	120.30
3	C	507	Y1T	C42-C41-C45	-2.29	116.17	120.91
3	A	507	Y1T	C42-C41-C45	-2.29	116.17	120.91
3	B	507	Y1T	C42-C41-C45	-2.29	116.17	120.91
3	D	507	Y1T	C42-C41-C45	-2.29	116.17	120.91
3	B	507	Y1T	C07-C06-C05	2.29	122.94	120.30
3	D	507	Y1T	C22-C31-C29	-2.26	119.70	122.37
3	A	507	Y1T	C22-C31-C29	-2.25	119.71	122.37
3	C	507	Y1T	C22-C31-C29	-2.25	119.71	122.37
3	B	507	Y1T	C22-C31-C29	-2.25	119.71	122.37
3	B	507	Y1T	C07-C08-CL09	2.17	122.77	118.41
3	A	507	Y1T	C07-C08-CL09	2.17	122.77	118.41
3	D	507	Y1T	C07-C08-CL09	2.17	122.76	118.41
3	C	507	Y1T	C07-C08-CL09	2.17	122.76	118.41

Continued on next page...

Continued from previous page...

Mol	Chain	Res	Type	Atoms	Z	Observed(°)	Ideal(°)
3	D	507	Y1T	O20-C19-O33	-2.11	121.18	124.78
3	A	507	Y1T	O20-C19-O33	-2.11	121.18	124.78
3	B	507	Y1T	O20-C19-O33	-2.11	121.18	124.78
3	C	507	Y1T	O20-C19-O33	-2.11	121.18	124.78
3	A	507	Y1T	C03-C02-N14	2.04	118.62	113.73
3	B	507	Y1T	C03-C02-N14	2.04	118.62	113.73
3	C	507	Y1T	C03-C02-N14	2.04	118.62	113.73
3	D	507	Y1T	C03-C02-N14	2.04	118.61	113.73
3	A	507	Y1T	C46-C16-C17	2.01	122.22	120.03
3	C	507	Y1T	C46-C16-C17	2.01	122.22	120.03
3	B	507	Y1T	C46-C16-C17	2.01	122.22	120.03
3	D	507	Y1T	C46-C16-C17	2.01	122.22	120.03

There are no chirality outliers.

All (60) torsion outliers are listed below:

Mol	Chain	Res	Type	Atoms
2	C	505	NAG	O5-C5-C6-O6
2	D	505	NAG	O5-C5-C6-O6
2	A	505	NAG	O5-C5-C6-O6
2	B	505	NAG	O5-C5-C6-O6
2	C	501	NAG	O5-C5-C6-O6
2	C	503	NAG	O5-C5-C6-O6
2	D	501	NAG	O5-C5-C6-O6
2	D	503	NAG	O5-C5-C6-O6
2	A	501	NAG	O5-C5-C6-O6
2	A	503	NAG	O5-C5-C6-O6
2	B	501	NAG	O5-C5-C6-O6
2	B	503	NAG	O5-C5-C6-O6
2	C	501	NAG	C4-C5-C6-O6
2	D	501	NAG	C4-C5-C6-O6
2	A	501	NAG	C4-C5-C6-O6
2	B	501	NAG	C4-C5-C6-O6
2	C	505	NAG	C4-C5-C6-O6
2	D	505	NAG	C4-C5-C6-O6
2	A	505	NAG	C4-C5-C6-O6
2	B	505	NAG	C4-C5-C6-O6
2	C	503	NAG	C4-C5-C6-O6
2	D	503	NAG	C4-C5-C6-O6
2	A	503	NAG	C4-C5-C6-O6
2	B	503	NAG	C4-C5-C6-O6
2	C	503	NAG	C8-C7-N2-C2

Continued on next page...

Continued from previous page...

Mol	Chain	Res	Type	Atoms
2	C	503	NAG	O7-C7-N2-C2
2	D	503	NAG	C8-C7-N2-C2
2	D	503	NAG	O7-C7-N2-C2
2	A	503	NAG	C8-C7-N2-C2
2	A	503	NAG	O7-C7-N2-C2
2	B	503	NAG	C8-C7-N2-C2
2	B	503	NAG	O7-C7-N2-C2
2	C	503	NAG	C3-C2-N2-C7
2	D	503	NAG	C3-C2-N2-C7
2	A	503	NAG	C3-C2-N2-C7
2	B	503	NAG	C3-C2-N2-C7
2	C	502	NAG	O5-C5-C6-O6
2	D	502	NAG	O5-C5-C6-O6
2	A	502	NAG	O5-C5-C6-O6
2	B	502	NAG	O5-C5-C6-O6
2	C	502	NAG	C4-C5-C6-O6
2	D	502	NAG	C4-C5-C6-O6
2	A	502	NAG	C4-C5-C6-O6
2	B	502	NAG	C4-C5-C6-O6
3	C	507	Y1T	C34-C35-N36-C37
3	D	507	Y1T	C34-C35-N36-C37
3	A	507	Y1T	C34-C35-N36-C37
3	B	507	Y1T	C34-C35-N36-C37
2	C	506	NAG	C4-C5-C6-O6
2	D	506	NAG	C4-C5-C6-O6
2	A	506	NAG	C4-C5-C6-O6
2	B	506	NAG	C4-C5-C6-O6
3	C	507	Y1T	C15-C34-C35-N36
3	D	507	Y1T	C15-C34-C35-N36
3	A	507	Y1T	C15-C34-C35-N36
3	B	507	Y1T	C15-C34-C35-N36
2	C	506	NAG	O5-C5-C6-O6
2	D	506	NAG	O5-C5-C6-O6
2	A	506	NAG	O5-C5-C6-O6
2	B	506	NAG	O5-C5-C6-O6

There are no ring outliers.

10 monomers are involved in 34 short contacts:

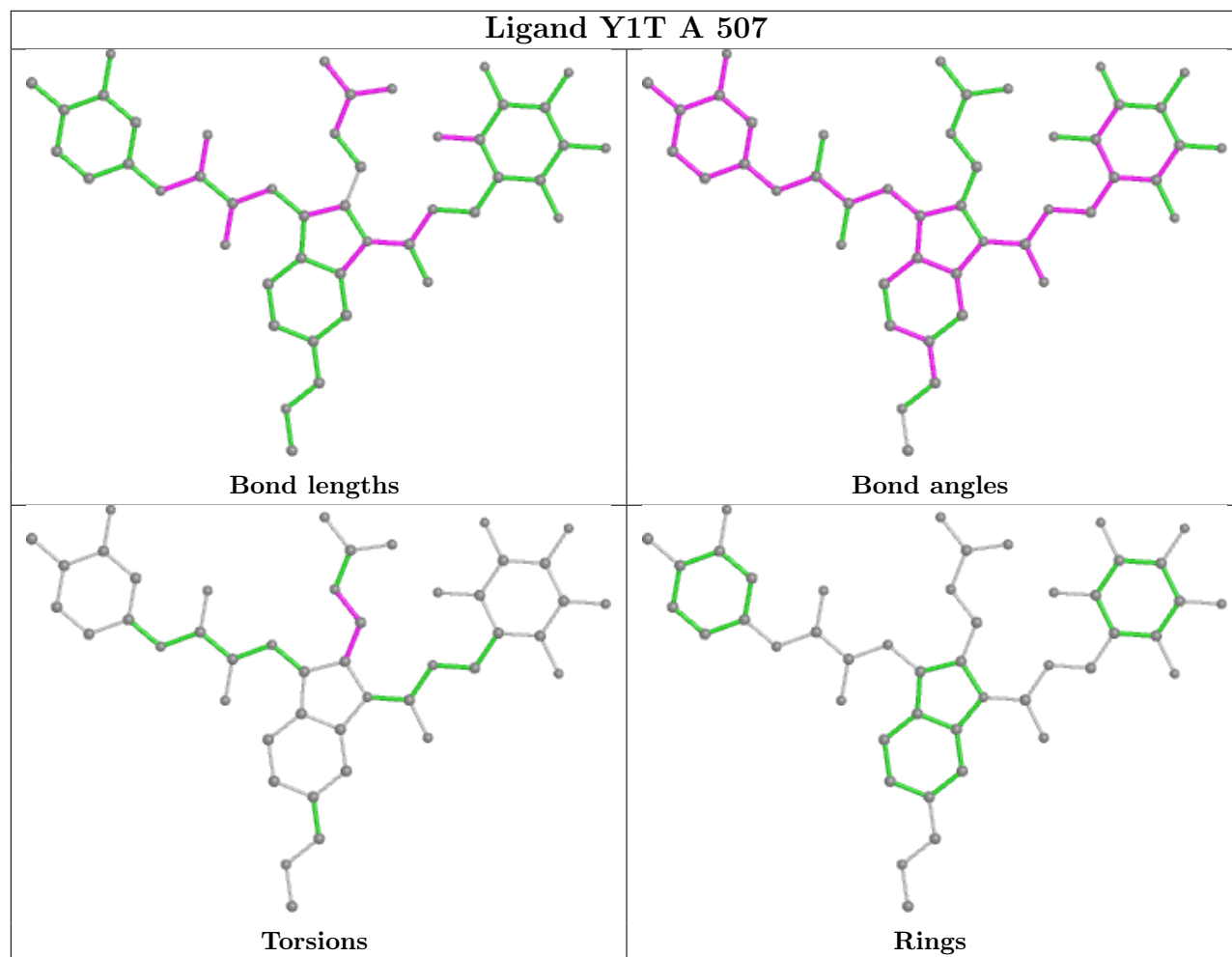
Mol	Chain	Res	Type	Clashes	Symm-Clashes
2	B	503	NAG	4	0
2	C	503	NAG	4	0

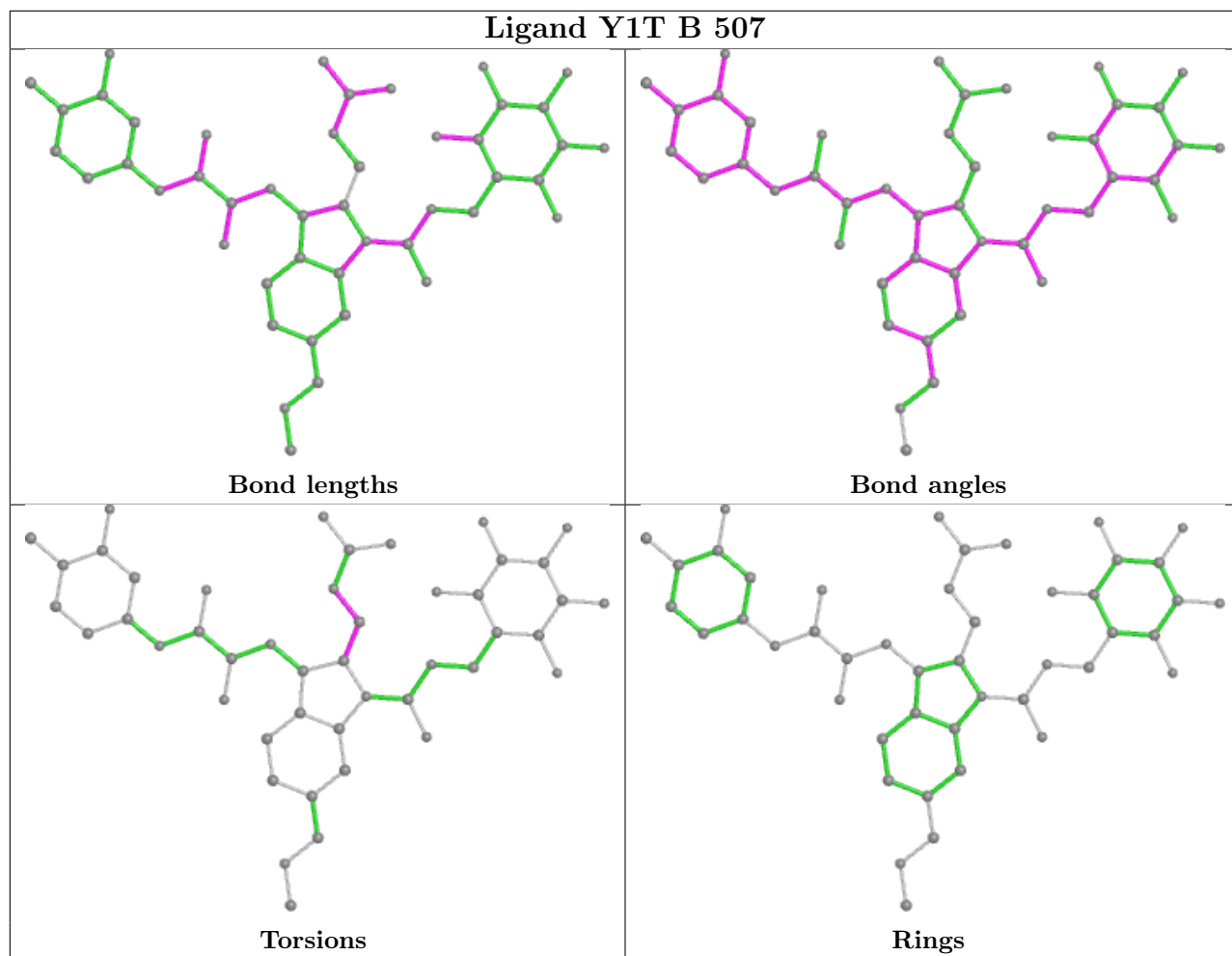
Continued on next page...

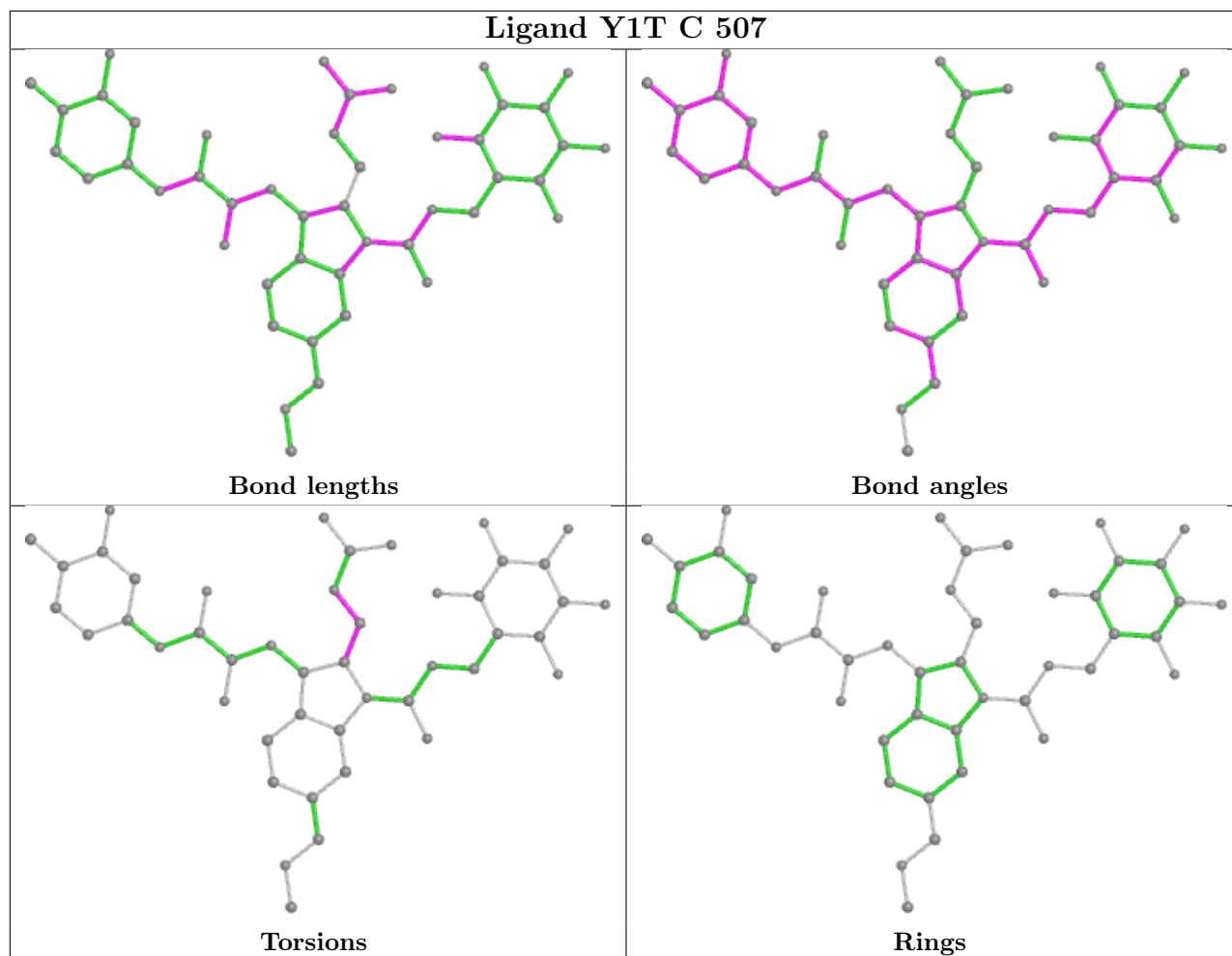
Continued from previous page...

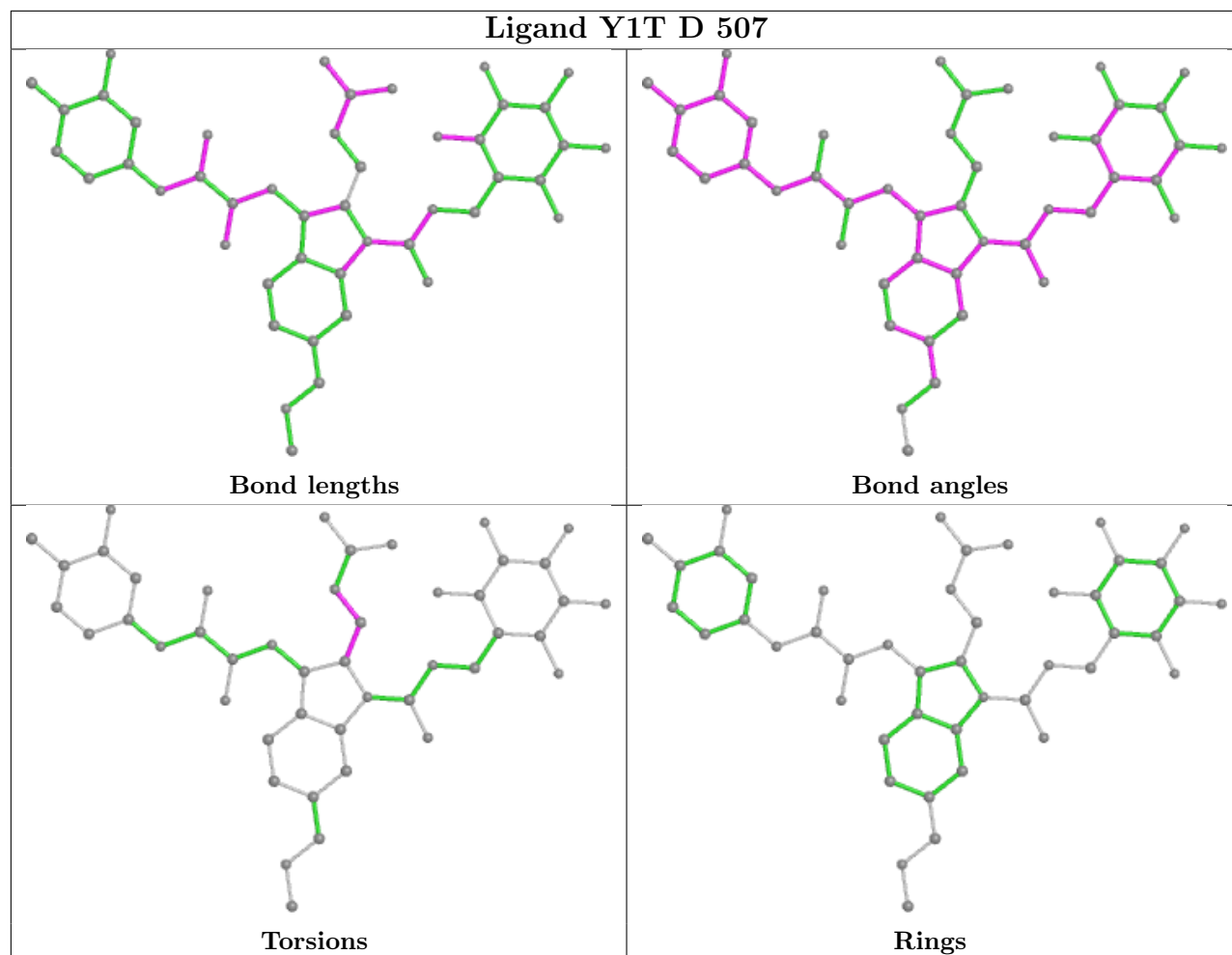
Mol	Chain	Res	Type	Clashes	Symm-Clashes
2	A	503	NAG	5	0
4	A	508	IMD	2	0
2	B	505	NAG	2	0
2	C	505	NAG	4	0
2	A	505	NAG	6	0
2	D	503	NAG	4	0
3	D	507	Y1T	1	0
2	D	505	NAG	2	0

The following is a two-dimensional graphical depiction of Mogul quality analysis of bond lengths, bond angles, torsion angles, and ring geometry for all instances of the Ligand of Interest. In addition, ligands with molecular weight > 250 and outliers as shown on the validation Tables will also be included. For torsion angles, if less than 5% of the Mogul distribution of torsion angles is within 10 degrees of the torsion angle in question, then that torsion angle is considered an outlier. Any bond that is central to one or more torsion angles identified as an outlier by Mogul will be highlighted in the graph. For rings, the root-mean-square deviation (RMSD) between the ring in question and similar rings identified by Mogul is calculated over all ring torsion angles. If the average RMSD is greater than 60 degrees and the minimal RMSD between the ring in question and any Mogul-identified rings is also greater than 60 degrees, then that ring is considered an outlier. The outliers are highlighted in purple. The color gray indicates Mogul did not find sufficient equivalents in the CSD to analyse the geometry.









5.7 Other polymers [\(i\)](#)

There are no such residues in this entry.

5.8 Polymer linkage issues [\(i\)](#)

There are no chain breaks in this entry.

6 Fit of model and data

6.1 Protein, DNA and RNA chains

In the following table, the column labelled ‘#RSRZ > 2’ contains the number (and percentage) of RSRZ outliers, followed by percent RSRZ outliers for the chain as percentile scores relative to all X-ray entries and entries of similar resolution. The OWAB column contains the minimum, median, 95th percentile and maximum values of the occupancy-weighted average B-factor per residue. The column labelled ‘Q < 0.9’ lists the number of (and percentage) of residues with an average occupancy less than 0.9.

Mol	Chain	Analysed	<RSRZ>	#RSRZ>2	OWAB(Å ²)	Q<0.9
1	A	335/358 (93%)	-0.09	8 (2%) 59 61	18, 38, 63, 76	0
1	B	335/358 (93%)	0.11	20 (5%) 21 22	20, 45, 74, 92	0
1	C	335/358 (93%)	-0.01	16 (4%) 30 32	16, 35, 67, 88	0
1	D	335/358 (93%)	0.10	16 (4%) 30 32	22, 43, 72, 89	0
All	All	1340/1432 (93%)	0.03	60 (4%) 33 35	16, 40, 70, 92	0

All (60) RSRZ outliers are listed below:

Mol	Chain	Res	Type	RSRZ
1	C	60	ALA	6.2
1	A	87	ALA	6.0
1	C	61	TYR	5.4
1	B	91	GLU	5.0
1	B	240	ARG	5.0
1	C	89	VAL	4.7
1	D	87	ALA	4.7
1	C	84	MET	4.5
1	C	86	LEU	4.4
1	C	88	ASN	4.1
1	C	124	GLY	4.0
1	D	326	ILE	4.0
1	B	87	ALA	4.0
1	A	85	VAL	4.0
1	B	88	ASN	3.9
1	D	89	VAL	3.8
1	B	86	LEU	3.8
1	B	226	LEU	3.6
1	C	240	ARG	3.6
1	D	84	MET	3.5
1	D	300	ASN	3.4

Continued on next page...

Continued from previous page...

Mol	Chain	Res	Type	RSRZ
1	A	86	LEU	3.3
1	B	89	VAL	3.2
1	C	80	ASN	3.2
1	C	85	VAL	3.2
1	B	489	VAL	3.2
1	B	61	TYR	3.1
1	D	86	LEU	3.1
1	C	82	GLN	3.0
1	D	240	ARG	2.9
1	A	88	ASN	2.9
1	C	87	ALA	2.9
1	A	202	THR	2.8
1	A	240	ARG	2.8
1	D	88	ASN	2.8
1	D	91	GLU	2.7
1	B	326	ILE	2.7
1	D	85	VAL	2.7
1	B	50	THR	2.7
1	D	408	ARG	2.7
1	B	60	ALA	2.6
1	C	199	SER	2.6
1	B	238	PRO	2.6
1	C	198	GLY	2.6
1	D	397	ASN	2.5
1	B	408	ARG	2.4
1	B	224	ALA	2.3
1	C	246	GLN	2.3
1	A	82	GLN	2.3
1	B	79	PRO	2.2
1	B	72	HIS	2.2
1	C	59	LYS	2.2
1	D	238	PRO	2.2
1	D	339	ASN	2.2
1	D	341	THR	2.2
1	B	201	ILE	2.1
1	B	90	THR	2.1
1	A	226	LEU	2.1
1	D	465	THR	2.0
1	B	92	ASN	2.0

6.2 Non-standard residues in protein, DNA, RNA chains [i](#)

There are no non-standard protein/DNA/RNA residues in this entry.

6.3 Carbohydrates [i](#)

There are no monosaccharides in this entry.

6.4 Ligands [i](#)

In the following table, the Atoms column lists the number of modelled atoms in the group and the number defined in the chemical component dictionary. The B-factors column lists the minimum, median, 95th percentile and maximum values of B factors of atoms in the group. The column labelled 'Q< 0.9' lists the number of atoms with occupancy less than 0.9.

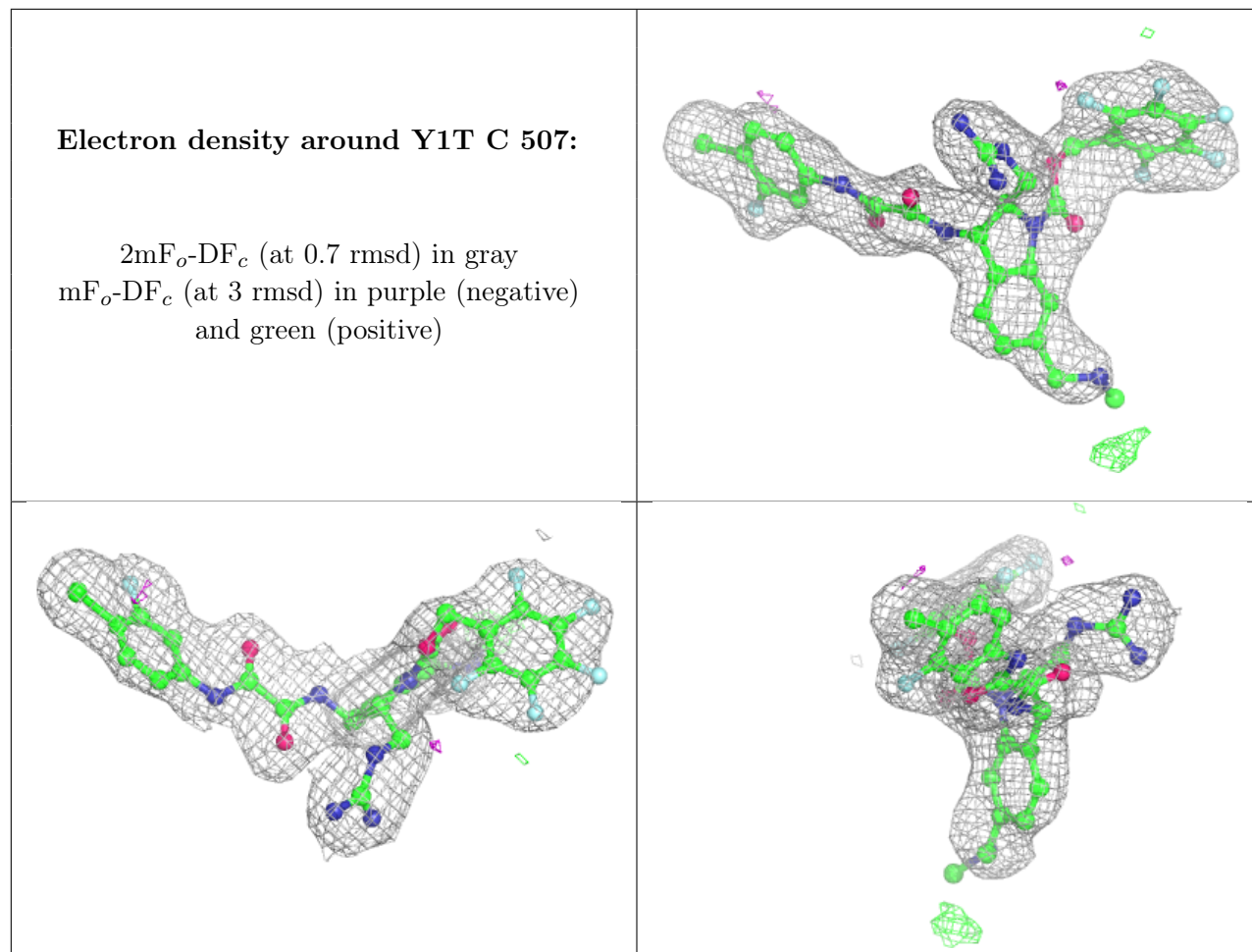
Mol	Type	Chain	Res	Atoms	RSCC	RSR	B-factors(Å ²)	Q<0.9
2	NAG	D	506	14/15	0.72	0.29	48,56,78,101	0
2	NAG	A	506	14/15	0.82	0.26	60,68,87,89	0
2	NAG	B	503	14/15	0.83	0.20	43,62,79,85	0
2	NAG	D	503	14/15	0.87	0.19	55,63,68,76	0
2	NAG	B	504	14/15	0.87	0.16	38,51,58,60	0
2	NAG	B	506	14/15	0.87	0.22	31,44,66,71	0
2	NAG	D	501	14/15	0.89	0.19	39,47,65,67	0
2	NAG	D	505	14/15	0.89	0.18	50,56,62,64	0
2	NAG	B	501	14/15	0.89	0.21	44,64,73,84	0
2	NAG	D	504	14/15	0.90	0.18	39,53,61,64	0
2	NAG	C	506	14/15	0.91	0.15	37,55,68,79	0
2	NAG	A	503	14/15	0.93	0.17	42,51,67,70	0
2	NAG	C	504	14/15	0.93	0.12	22,35,50,63	0
2	NAG	C	505	14/15	0.93	0.16	22,34,43,53	0
4	IMD	A	508	5/5	0.93	0.15	39,50,64,76	0
2	NAG	B	505	14/15	0.94	0.12	44,49,59,63	0
2	NAG	C	503	14/15	0.94	0.13	42,48,58,64	0
2	NAG	B	502	14/15	0.94	0.17	35,43,47,49	0
2	NAG	A	505	14/15	0.95	0.15	22,30,60,63	0
2	NAG	D	502	14/15	0.95	0.18	22,35,45,46	0
3	Y1T	C	507	46/46	0.95	0.15	16,26,55,70	0
3	Y1T	D	507	46/46	0.95	0.13	20,33,59,74	0
3	Y1T	A	507	46/46	0.95	0.15	18,28,62,76	0
3	Y1T	B	507	46/46	0.95	0.14	17,31,73,91	0
2	NAG	A	504	14/15	0.95	0.17	36,42,57,65	0
2	NAG	A	501	14/15	0.96	0.11	36,52,65,68	0
2	NAG	C	501	14/15	0.96	0.10	26,38,53,67	0

Continued on next page...

Continued from previous page...

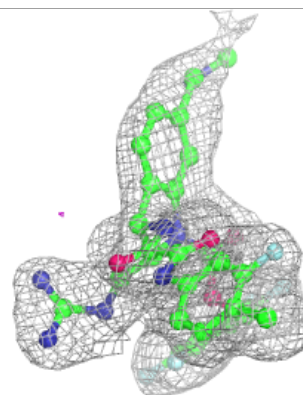
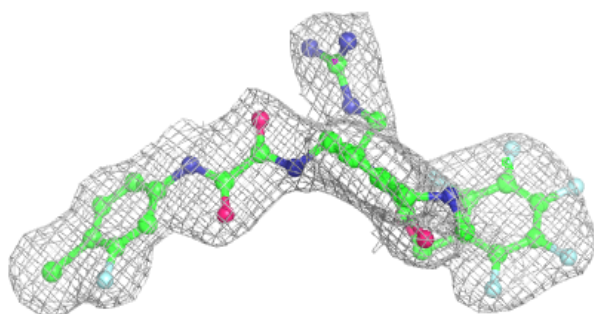
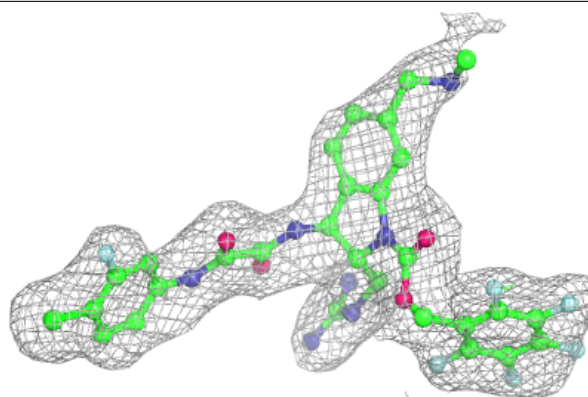
Mol	Type	Chain	Res	Atoms	RSCC	RSR	B-factors(\AA^2)	Q<0.9
2	NAG	A	502	14/15	0.97	0.17	21,28,36,41	0
2	NAG	C	502	14/15	0.97	0.15	24,33,39,40	0

The following is a graphical depiction of the model fit to experimental electron density of all instances of the Ligand of Interest. In addition, ligands with molecular weight > 250 and outliers as shown on the geometry validation Tables will also be included. Each fit is shown from different orientation to approximate a three-dimensional view.

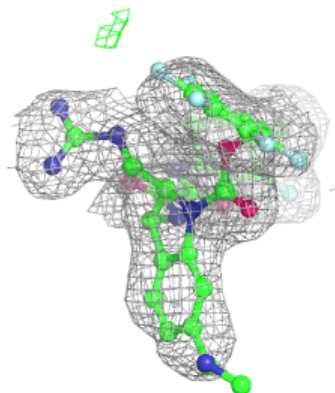
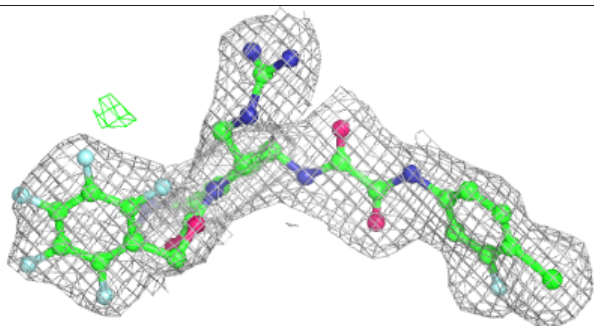
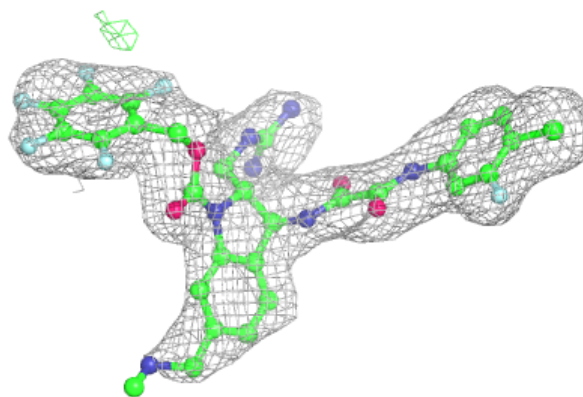


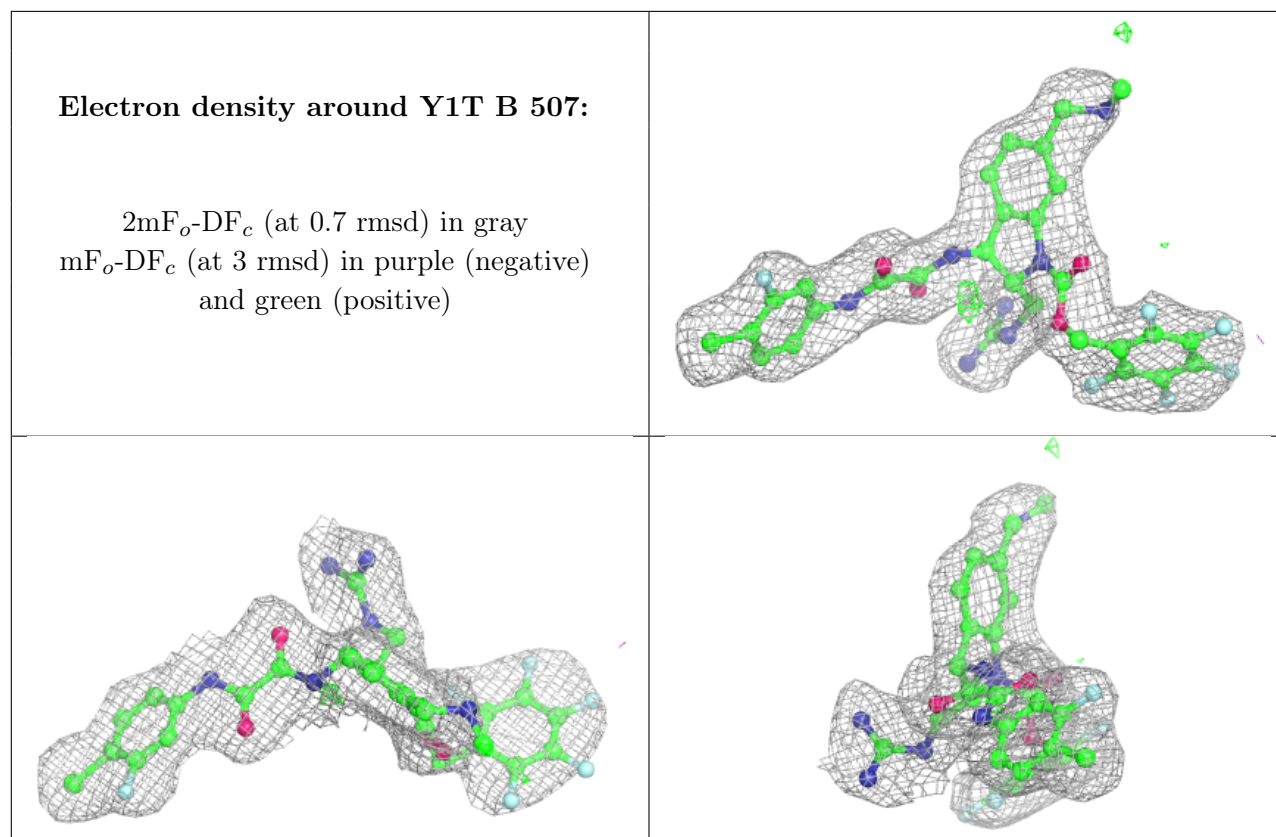
Electron density around Y1T D 507:

$2mF_o-DF_c$ (at 0.7 rmsd) in gray
 mF_o-DF_c (at 3 rmsd) in purple (negative)
and green (positive)

**Electron density around Y1T A 507:**

$2mF_o-DF_c$ (at 0.7 rmsd) in gray
 mF_o-DF_c (at 3 rmsd) in purple (negative)
and green (positive)





6.5 Other polymers [i](#)

There are no such residues in this entry.