



# Full wwPDB X-ray Structure Validation Report ⓘ

Nov 21, 2023 – 07:45 AM JST

PDB ID : 7F80  
Title : Co-crystal structure of Inhibitor compound MA-211 in complex with human PPARdelta LBD  
Authors : Lakshminarasimhan, A.; Rani, S.T.; Senaiar, R.S.; Krishnamurthy, N.  
Deposited on : 2021-06-30  
Resolution : 2.80 Å(reported)

This is a Full wwPDB X-ray Structure Validation Report for a publicly released PDB entry.

We welcome your comments at [validation@mail.wwpdb.org](mailto:validation@mail.wwpdb.org)

A user guide is available at

<https://www.wwpdb.org/validation/2017/XrayValidationReportHelp>

with specific help available everywhere you see the ⓘ symbol.

The types of validation reports are described at

<http://www.wwpdb.org/validation/2017/FAQs#types>.

---

The following versions of software and data (see [references ⓘ](#)) were used in the production of this report:

MolProbity : 4.02b-467  
Mogul : 1.8.5 (274361), CSD as541be (2020)  
Xtriage (Phenix) : 1.13  
EDS : 2.36  
buster-report : 1.1.7 (2018)  
Percentile statistics : 20191225.v01 (using entries in the PDB archive December 25th 2019)  
Refmac : 5.8.0158  
CCP4 : 7.0.044 (Gargrove)  
Ideal geometry (proteins) : Engh & Huber (2001)  
Ideal geometry (DNA, RNA) : Parkinson et al. (1996)  
Validation Pipeline (wwPDB-VP) : 2.36

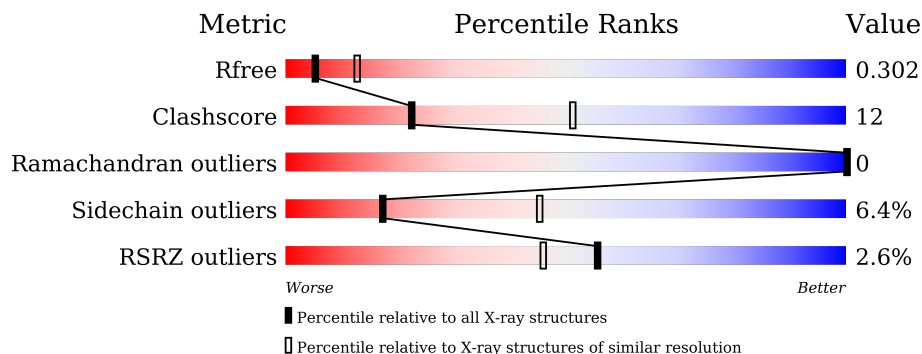
# 1 Overall quality at a glance

The following experimental techniques were used to determine the structure:

*X-RAY DIFFRACTION*

The reported resolution of this entry is 2.80 Å.

Percentile scores (ranging between 0-100) for global validation metrics of the entry are shown in the following graphic. The table shows the number of entries on which the scores are based.



Metric	Whole archive (#Entries)	Similar resolution (#Entries, resolution range(Å))
$R_{free}$	130704	3140 (2.80-2.80)
Clashscore	141614	3569 (2.80-2.80)
Ramachandran outliers	138981	3498 (2.80-2.80)
Sidechain outliers	138945	3500 (2.80-2.80)
RSRZ outliers	127900	3078 (2.80-2.80)

The table below summarises the geometric issues observed across the polymeric chains and their fit to the electron density. The red, orange, yellow and green segments of the lower bar indicate the fraction of residues that contain outliers for  $\geq 3$ , 2, 1 and 0 types of geometric quality criteria respectively. A grey segment represents the fraction of residues that are not modelled. The numeric value for each fraction is indicated below the corresponding segment, with a dot representing fractions  $\leq 5\%$ . The upper red bar (where present) indicates the fraction of residues that have poor fit to the electron density. The numeric value is given above the bar.

Mol	Chain	Length	Quality of chain
1	A	275	 2% 69% 20% • 7%
1	B	275	 3% 67% 23% • 8%

## 2 Entry composition

There are 2 unique types of molecules in this entry. The entry contains 4228 atoms, of which 52 are hydrogens and 0 are deuteriums.

In the tables below, the ZeroOcc column contains the number of atoms modelled with zero occupancy, the AltConf column contains the number of residues with at least one atom in alternate conformation and the Trace column contains the number of residues modelled with at most 2 atoms.

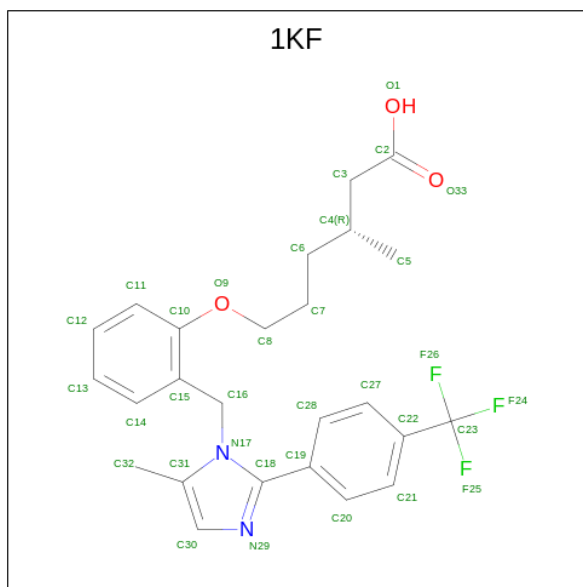
- Molecule 1 is a protein called Peroxisome proliferator-activated receptor delta.

Mol	Chain	Residues	Atoms					ZeroOcc	AltConf	Trace
			Total	C	N	O	S			
1	A	255	2055	1330	345	370	10	0	0	0
1	B	254	2055	1334	344	368	9	0	0	0

There are 8 discrepancies between the modelled and reference sequences:

Chain	Residue	Modelled	Actual	Comment	Reference
A	167	GLY	-	expression tag	UNP Q03181
A	168	SER	-	expression tag	UNP Q03181
A	169	HIS	-	expression tag	UNP Q03181
A	170	MET	-	expression tag	UNP Q03181
B	167	GLY	-	expression tag	UNP Q03181
B	168	SER	-	expression tag	UNP Q03181
B	169	HIS	-	expression tag	UNP Q03181
B	170	MET	-	expression tag	UNP Q03181

- Molecule 2 is (3R)-3-methyl-6-[2-[[5-methyl-2-[4-(trifluoromethyl)phenyl]imidazol-1-yl]methyl]phenoxy]hexanoic acid (three-letter code: 1KF) (formula: C<sub>25</sub>H<sub>27</sub>F<sub>3</sub>N<sub>2</sub>O<sub>3</sub>) (labeled as "Ligand of Interest" by depositor).

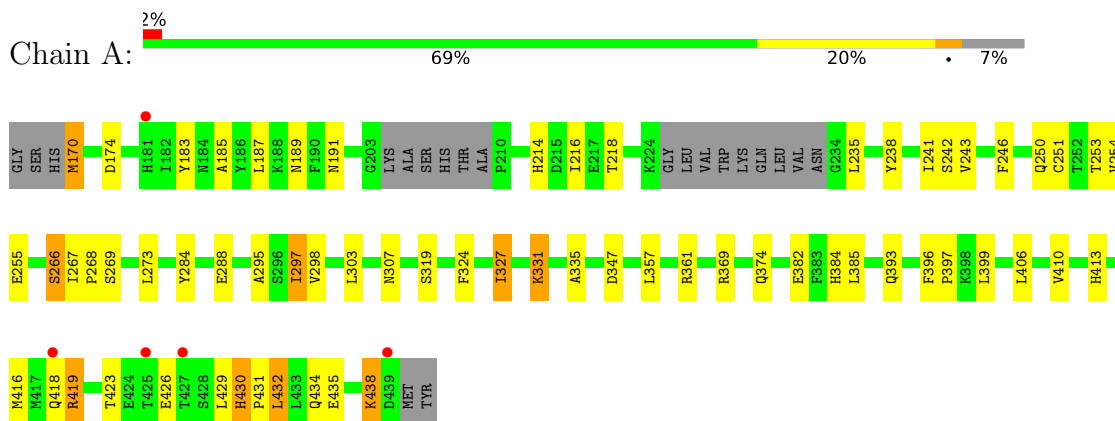


Mol	Chain	Residues	Atoms					ZeroOcc	AltConf		
			Total	C	F	H	N			O	
2	A	1	Total	59	25	3	26	2	3	0	0
2	B	1	Total	59	25	3	26	2	3	0	0

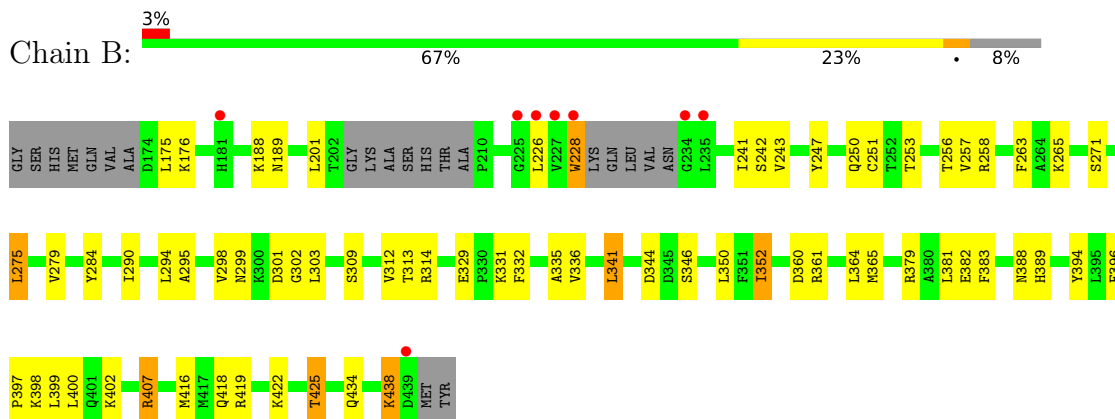
### 3 Residue-property plots [i](#)

These plots are drawn for all protein, RNA, DNA and oligosaccharide chains in the entry. The first graphic for a chain summarises the proportions of the various outlier classes displayed in the second graphic. The second graphic shows the sequence view annotated by issues in geometry and electron density. Residues are color-coded according to the number of geometric quality criteria for which they contain at least one outlier: green = 0, yellow = 1, orange = 2 and red = 3 or more. A red dot above a residue indicates a poor fit to the electron density ( $RSRZ > 2$ ). Stretches of 2 or more consecutive residues without any outlier are shown as a green connector. Residues present in the sample, but not in the model, are shown in grey.

- Molecule 1: Peroxisome proliferator-activated receptor delta



- Molecule 1: Peroxisome proliferator-activated receptor delta



## 4 Data and refinement statistics

Property	Value	Source
Space group	P 1 21 1	Depositor
Cell constants a, b, c, $\alpha$ , $\beta$ , $\gamma$	39.69Å 74.99Å 96.34Å 90.00° 97.89° 90.00°	Depositor
Resolution (Å)	47.60 – 2.80 47.71 – 2.80	Depositor EDS
% Data completeness (in resolution range)	83.0 (47.60-2.80) 83.0 (47.71-2.80)	Depositor EDS
$R_{merge}$	0.11	Depositor
$R_{sym}$	(Not available)	Depositor
$\langle I/\sigma(I) \rangle$ <sup>1</sup>	1.49 (at 2.81Å)	Xtrriage
Refinement program	REFMAC 5.7.0029	Depositor
R, $R_{free}$	0.204 , 0.300 0.213 , 0.302	Depositor DCC
$R_{free}$ test set	586 reflections (5.06%)	wwPDB-VP
Wilson B-factor (Å <sup>2</sup> )	45.9	Xtrriage
Anisotropy	0.136	Xtrriage
Bulk solvent $k_{sol}$ (e/Å <sup>3</sup> ), $B_{sol}$ (Å <sup>2</sup> )	0.35 , 45.7	EDS
L-test for twinning <sup>2</sup>	$\langle  L  \rangle = 0.48$ , $\langle L^2 \rangle = 0.31$	Xtrriage
Estimated twinning fraction	No twinning to report.	Xtrriage
$F_o, F_c$ correlation	0.92	EDS
Total number of atoms	4228	wwPDB-VP
Average B, all atoms (Å <sup>2</sup> )	36.0	wwPDB-VP

Xtrriage's analysis on translational NCS is as follows: *The largest off-origin peak in the Patterson function is 7.68% of the height of the origin peak. No significant pseudotranslation is detected.*

<sup>1</sup>Intensities estimated from amplitudes.

<sup>2</sup>Theoretical values of  $\langle |L| \rangle$ ,  $\langle L^2 \rangle$  for acentric reflections are 0.5, 0.333 respectively for untwinned datasets, and 0.375, 0.2 for perfectly twinned datasets.

## 5 Model quality [i](#)

### 5.1 Standard geometry [i](#)

Bond lengths and bond angles in the following residue types are not validated in this section: 1KF

The Z score for a bond length (or angle) is the number of standard deviations the observed value is removed from the expected value. A bond length (or angle) with  $|Z| > 5$  is considered an outlier worth inspection. RMSZ is the root-mean-square of all Z scores of the bond lengths (or angles).

Mol	Chain	Bond lengths		Bond angles	
		RMSZ	# $ Z  > 5$	RMSZ	# $ Z  > 5$
1	A	0.66	0/2097	0.80	3/2830 (0.1%)
1	B	0.64	0/2099	0.80	2/2835 (0.1%)
All	All	0.65	0/4196	0.80	5/5665 (0.1%)

There are no bond length outliers.

All (5) bond angle outliers are listed below:

Mol	Chain	Res	Type	Atoms	Z	Observed(°)	Ideal(°)
1	B	341	LEU	CA-CB-CG	5.59	128.16	115.30
1	B	226	LEU	CA-CB-CG	5.49	127.93	115.30
1	A	430	HIS	CB-CA-C	-5.41	99.58	110.40
1	A	432	LEU	CA-CB-CG	5.29	127.47	115.30
1	A	273	LEU	CA-CB-CG	5.25	127.38	115.30

There are no chirality outliers.

There are no planarity outliers.

### 5.2 Too-close contacts [i](#)

In the following table, the Non-H and H(model) columns list the number of non-hydrogen atoms and hydrogen atoms in the chain respectively. The H(added) column lists the number of hydrogen atoms added and optimized by MolProbity. The Clashes column lists the number of clashes within the asymmetric unit, whereas Symm-Clashes lists symmetry-related clashes.

Mol	Chain	Non-H	H(model)	H(added)	Clashes	Symm-Clashes
1	A	2055	0	2095	51	1
1	B	2055	0	2094	48	1
2	A	33	26	0	1	0
2	B	33	26	0	1	0

*Continued on next page...*

*Continued from previous page...*

Mol	Chain	Non-H	H(model)	H(added)	Clashes	Symm-Clashes
All	All	4176	52	4189	97	1

The all-atom clashscore is defined as the number of clashes found per 1000 atoms (including hydrogen atoms). The all-atom clashscore for this structure is 12.

All (97) close contacts within the same asymmetric unit are listed below, sorted by their clash magnitude.

Atom-1	Atom-2	Interatomic distance (Å)	Clash overlap (Å)
1:A:235:LEU:CD2	1:A:251:CYS:SG	2.25	1.23
1:A:235:LEU:HD23	1:A:251:CYS:SG	1.98	1.00
1:A:235:LEU:HD21	1:A:251:CYS:SG	2.09	0.91
1:A:250:GLN:HE22	1:A:429:LEU:HA	1.34	0.91
1:B:243:VAL:HG12	1:B:247:TYR:CE2	2.10	0.86
1:A:255:GLU:HA	1:A:255:GLU:OE1	1.76	0.85
1:A:430:HIS:CE1	1:A:432:LEU:HB2	2.15	0.82
1:A:357:LEU:O	1:A:374:GLN:HB2	1.84	0.77
1:A:430:HIS:CE1	1:A:432:LEU:CB	2.68	0.77
1:A:170:MET:SD	1:B:365:MET:HG3	2.26	0.76
1:A:430:HIS:HE1	1:A:432:LEU:HB2	1.49	0.76
1:B:332:PHE:O	1:B:336:VAL:HG23	1.89	0.70
1:A:297:ILE:CD1	1:A:303:LEU:HD12	2.23	0.68
1:B:418:GLN:O	1:B:422:LYS:HG2	1.94	0.68
1:A:214:HIS:CD2	1:A:218:THR:HG21	2.31	0.65
1:A:419:ARG:O	1:A:423:THR:HG23	1.98	0.64
1:A:430:HIS:ND1	1:A:432:LEU:HB3	2.13	0.64
1:A:393:GLN:NE2	1:A:393:GLN:HA	2.14	0.63
1:A:235:LEU:HD22	1:A:251:CYS:SG	2.35	0.61
1:B:253:THR:HG23	1:B:290:ILE:HD13	1.82	0.61
1:B:397:PRO:HA	1:B:400:LEU:HD12	1.82	0.61
1:A:214:HIS:HD2	1:A:218:THR:HG21	1.64	0.61
1:A:243:VAL:O	1:A:246:PHE:HB3	2.00	0.61
1:A:250:GLN:NE2	1:A:429:LEU:HA	2.12	0.61
1:B:331:LYS:HD2	1:B:331:LYS:H	1.66	0.61
1:A:297:ILE:HD12	1:A:303:LEU:HD12	1.84	0.60
1:B:396:PHE:CE2	1:B:400:LEU:HD11	2.36	0.60
1:A:255:GLU:OE1	1:A:255:GLU:CA	2.47	0.60
1:A:430:HIS:CE1	1:A:432:LEU:HB3	2.35	0.59
1:B:243:VAL:CG1	1:B:247:TYR:CE2	2.85	0.59
1:B:243:VAL:HG12	1:B:247:TYR:HE2	1.65	0.58
1:A:242:SER:HB3	1:A:324:PHE:HD2	1.68	0.58
1:A:369:ARG:NH2	1:B:364:LEU:O	2.38	0.57

*Continued on next page...*



*Continued from previous page...*

Atom-1	Atom-2	Interatomic distance (Å)	Clash overlap (Å)
1:A:254:VAL:HG22	1:A:432:LEU:HD12	1.86	0.57
1:A:434:GLN:HG3	1:A:438:LYS:HE3	1.87	0.57
1:A:288:GLU:HG3	1:A:410:VAL:HG21	1.89	0.55
1:B:360:ASP:HB2	1:B:407:ARG:HH12	1.72	0.54
1:A:170:MET:HE3	1:A:174:ASP:HB3	1.89	0.54
1:A:191:ASN:ND2	1:A:307:ASN:OD1	2.42	0.53
1:B:258:ARG:HH11	1:B:258:ARG:HG3	1.74	0.52
1:B:253:THR:O	1:B:257:VAL:HG23	2.08	0.52
1:B:388:ASN:HB3	1:B:389:HIS:CD2	2.44	0.52
1:A:253:THR:HG21	2:A:900:1KF:O1	2.10	0.51
1:A:327:ILE:HG13	1:A:416:MET:HE3	1.92	0.51
1:A:430:HIS:ND1	1:A:432:LEU:CB	2.73	0.51
1:B:253:THR:CG2	1:B:290:ILE:HD13	2.39	0.51
1:A:242:SER:HB3	1:A:324:PHE:CD2	2.45	0.51
1:B:290:ILE:HG22	1:B:290:ILE:O	2.12	0.50
1:B:301:ASP:O	1:B:313:THR:HA	2.11	0.50
1:B:228:TRP:CD1	1:B:228:TRP:N	2.79	0.50
1:B:201:LEU:HD22	1:B:299:ASN:ND2	2.28	0.49
1:B:416:MET:O	1:B:419:ARG:HB3	2.13	0.48
1:A:185:ALA:HB1	1:A:266:SER:HB2	1.95	0.48
1:A:295:ALA:HA	1:A:335:ALA:HB1	1.96	0.48
1:B:175:LEU:CD1	1:B:383:PHE:HD2	2.27	0.48
1:B:263:PHE:HE2	1:B:352:ILE:HG22	1.79	0.47
1:B:344:ASP:OD1	1:B:346:SER:N	2.46	0.47
1:B:398:LYS:O	1:B:402:LYS:HG2	2.15	0.47
1:A:435:GLU:HA	1:A:438:LYS:HG2	1.96	0.47
1:A:284:TYR:HB3	1:A:361:ARG:HD2	1.96	0.47
1:B:258:ARG:HG3	1:B:258:ARG:NH1	2.31	0.46
1:B:344:ASP:OD1	1:B:344:ASP:C	2.54	0.46
1:B:302:GLY:HA3	1:B:312:VAL:O	2.16	0.46
1:B:284:TYR:HB3	1:B:361:ARG:HD2	1.97	0.46
1:B:341:LEU:HD13	1:B:399:LEU:CD2	2.46	0.46
1:B:175:LEU:HD12	1:B:383:PHE:HD2	1.82	0.45
1:B:263:PHE:CE2	1:B:352:ILE:HG22	2.51	0.45
1:A:385:LEU:HD11	1:A:399:LEU:HD12	1.99	0.45
1:A:331:LYS:NZ	1:A:413:HIS:HB2	2.33	0.44
1:B:438:LYS:HB2	1:B:438:LYS:HE2	1.66	0.44
1:B:331:LYS:HD2	1:B:331:LYS:N	2.31	0.44
1:B:275:LEU:O	1:B:279:VAL:HG23	2.18	0.44
1:A:347:ASP:OD1	1:A:384:HIS:CD2	2.71	0.44
1:A:297:ILE:HD11	1:A:303:LEU:HD12	1.97	0.43

*Continued on next page...*

Continued from previous page...

Atom-1	Atom-2	Interatomic distance (Å)	Clash overlap (Å)
1:B:422:LYS:O	1:B:425:THR:HG23	2.18	0.43
1:B:263:PHE:CE2	1:B:352:ILE:CG2	3.01	0.43
1:A:396:PHE:HB3	1:A:397:PRO:CD	2.47	0.43
1:A:185:ALA:O	1:A:189:ASN:HB2	2.20	0.42
1:B:175:LEU:HD12	1:B:383:PHE:CD2	2.54	0.42
1:A:418:GLN:HA	1:A:418:GLN:OE1	2.19	0.42
1:A:430:HIS:HA	1:A:431:PRO:HD3	1.86	0.42
1:B:295:ALA:HA	1:B:335:ALA:HB1	2.01	0.42
1:A:267:ILE:CG2	1:A:268:PRO:HD2	2.51	0.41
1:B:314:ARG:NE	1:B:329:GLU:OE2	2.46	0.41
1:B:290:ILE:O	1:B:290:ILE:CG2	2.69	0.41
1:A:183:TYR:CE1	1:A:187:LEU:HD11	2.56	0.41
1:B:294:LEU:HD13	2:B:900:1KF:C32	2.50	0.41
1:B:250:GLN:O	1:B:251:CYS:C	2.58	0.41
1:B:394:TYR:O	1:B:397:PRO:HD2	2.21	0.41
1:A:216:ILE:HD13	1:A:241:ILE:HG13	2.02	0.41
1:A:406:LEU:O	1:A:410:VAL:HG23	2.21	0.40
1:B:434:GLN:HA	1:B:434:GLN:OE1	2.20	0.40
1:A:438:LYS:HD3	1:A:438:LYS:HA	1.45	0.40
1:B:189:ASN:ND2	1:B:263:PHE:HA	2.36	0.40
1:B:381:LEU:O	1:B:381:LEU:HG	2.22	0.40
1:A:267:ILE:HG23	1:A:268:PRO:HD2	2.02	0.40
1:B:379:ARG:HH11	1:B:379:ARG:HD3	1.76	0.40

All (1) symmetry-related close contacts are listed below. The label for Atom-2 includes the symmetry operator and encoded unit-cell translations to be applied.

Atom-1	Atom-2	Interatomic distance (Å)	Clash overlap (Å)
1:A:238:TYR:OH	1:B:382:GLU:OE2[2_646]	1.75	0.45

## 5.3 Torsion angles [i](#)

### 5.3.1 Protein backbone [i](#)

In the following table, the Percentiles column shows the percent Ramachandran outliers of the chain as a percentile score with respect to all X-ray entries followed by that with respect to entries of similar resolution.

The Analysed column shows the number of residues for which the backbone conformation was analysed, and the total number of residues.

Mol	Chain	Analysed	Favoured	Allowed	Outliers	Percentiles	
1	A	249/275 (90%)	238 (96%)	11 (4%)	0	100	100
1	B	248/275 (90%)	225 (91%)	23 (9%)	0	100	100
All	All	497/550 (90%)	463 (93%)	34 (7%)	0	100	100

There are no Ramachandran outliers to report.

### 5.3.2 Protein sidechains [i](#)

In the following table, the Percentiles column shows the percent sidechain outliers of the chain as a percentile score with respect to all X-ray entries followed by that with respect to entries of similar resolution.

The Analysed column shows the number of residues for which the sidechain conformation was analysed, and the total number of residues.

Mol	Chain	Analysed	Rotameric	Outliers	Percentiles	
1	A	226/242 (93%)	214 (95%)	12 (5%)	22	54
1	B	226/242 (93%)	209 (92%)	17 (8%)	13	37
All	All	452/484 (93%)	423 (94%)	29 (6%)	17	45

All (29) residues with a non-rotameric sidechain are listed below:

Mol	Chain	Res	Type
1	A	170	MET
1	A	266	SER
1	A	269	SER
1	A	297	ILE
1	A	298	VAL
1	A	319	SER
1	A	327	ILE
1	A	331	LYS
1	A	382	GLU
1	A	419	ARG
1	A	426	GLU
1	A	438	LYS
1	B	176	LYS
1	B	188	LYS
1	B	228	TRP
1	B	241	ILE
1	B	242	SER
1	B	256	THR

*Continued on next page...*

*Continued from previous page...*

Mol	Chain	Res	Type
1	B	265	LYS
1	B	271	SER
1	B	275	LEU
1	B	298	VAL
1	B	303	LEU
1	B	309	SER
1	B	350	LEU
1	B	352	ILE
1	B	407	ARG
1	B	425	THR
1	B	438	LYS

Sometimes sidechains can be flipped to improve hydrogen bonding and reduce clashes. All (8) such sidechains are listed below:

Mol	Chain	Res	Type
1	A	191	ASN
1	A	214	HIS
1	A	221	GLN
1	A	250	GLN
1	A	307	ASN
1	A	374	GLN
1	A	393	GLN
1	A	415	GLN

### 5.3.3 RNA [i](#)

There are no RNA molecules in this entry.

### 5.4 Non-standard residues in protein, DNA, RNA chains [i](#)

There are no non-standard protein/DNA/RNA residues in this entry.

### 5.5 Carbohydrates [i](#)

There are no monosaccharides in this entry.

### 5.6 Ligand geometry [i](#)

2 ligands are modelled in this entry.

In the following table, the Counts columns list the number of bonds (or angles) for which Mogul statistics could be retrieved, the number of bonds (or angles) that are observed in the model and the number of bonds (or angles) that are defined in the Chemical Component Dictionary. The Link column lists molecule types, if any, to which the group is linked. The Z score for a bond length (or angle) is the number of standard deviations the observed value is removed from the expected value. A bond length (or angle) with  $|Z| > 2$  is considered an outlier worth inspection. RMSZ is the root-mean-square of all Z scores of the bond lengths (or angles).

Mol	Type	Chain	Res	Link	Bond lengths			Bond angles		
					Counts	RMSZ	# Z  > 2	Counts	RMSZ	# Z  > 2
2	1KF	A	900	-	31,35,35	0.90	2 (6%)	41,49,49	2.00	7 (17%)
2	1KF	B	900	-	31,35,35	0.83	2 (6%)	41,49,49	1.83	6 (14%)

In the following table, the Chirals column lists the number of chiral outliers, the number of chiral centers analysed, the number of these observed in the model and the number defined in the Chemical Component Dictionary. Similar counts are reported in the Torsion and Rings columns. '-' means no outliers of that kind were identified.

Mol	Type	Chain	Res	Link	Chirals	Torsions	Rings
2	1KF	A	900	-	-	3/25/25/25	0/3/3/3
2	1KF	B	900	-	-	3/25/25/25	0/3/3/3

All (4) bond length outliers are listed below:

Mol	Chain	Res	Type	Atoms	Z	Observed(Å)	Ideal(Å)
2	A	900	1KF	C19-C18	-3.32	1.39	1.47
2	B	900	1KF	C19-C18	-2.53	1.41	1.47
2	B	900	1KF	C18-N29	2.21	1.37	1.34
2	A	900	1KF	C16-C15	-2.04	1.47	1.51

All (13) bond angle outliers are listed below:

Mol	Chain	Res	Type	Atoms	Z	Observed(°)	Ideal(°)
2	A	900	1KF	C32-C31-N17	9.08	134.12	122.69
2	B	900	1KF	C32-C31-N17	7.47	132.09	122.69
2	B	900	1KF	C15-C16-N17	3.71	119.40	113.26
2	A	900	1KF	C14-C15-C10	3.51	123.00	118.37
2	B	900	1KF	C8-O9-C10	3.51	126.27	117.69
2	A	900	1KF	O9-C10-C15	2.93	119.61	115.78
2	A	900	1KF	C8-O9-C10	2.91	124.80	117.69
2	B	900	1KF	C14-C15-C10	2.80	122.07	118.37
2	B	900	1KF	C30-N29-C18	2.66	110.33	104.05
2	A	900	1KF	C15-C16-N17	2.50	117.39	113.26

*Continued on next page...*

*Continued from previous page...*

Mol	Chain	Res	Type	Atoms	Z	Observed(°)	Ideal(°)
2	A	900	1KF	F25-C23-C22	-2.39	107.67	112.93
2	B	900	1KF	C31-C30-N29	-2.28	104.31	109.31
2	A	900	1KF	F24-C23-F26	2.17	113.66	105.72

There are no chirality outliers.

All (6) torsion outliers are listed below:

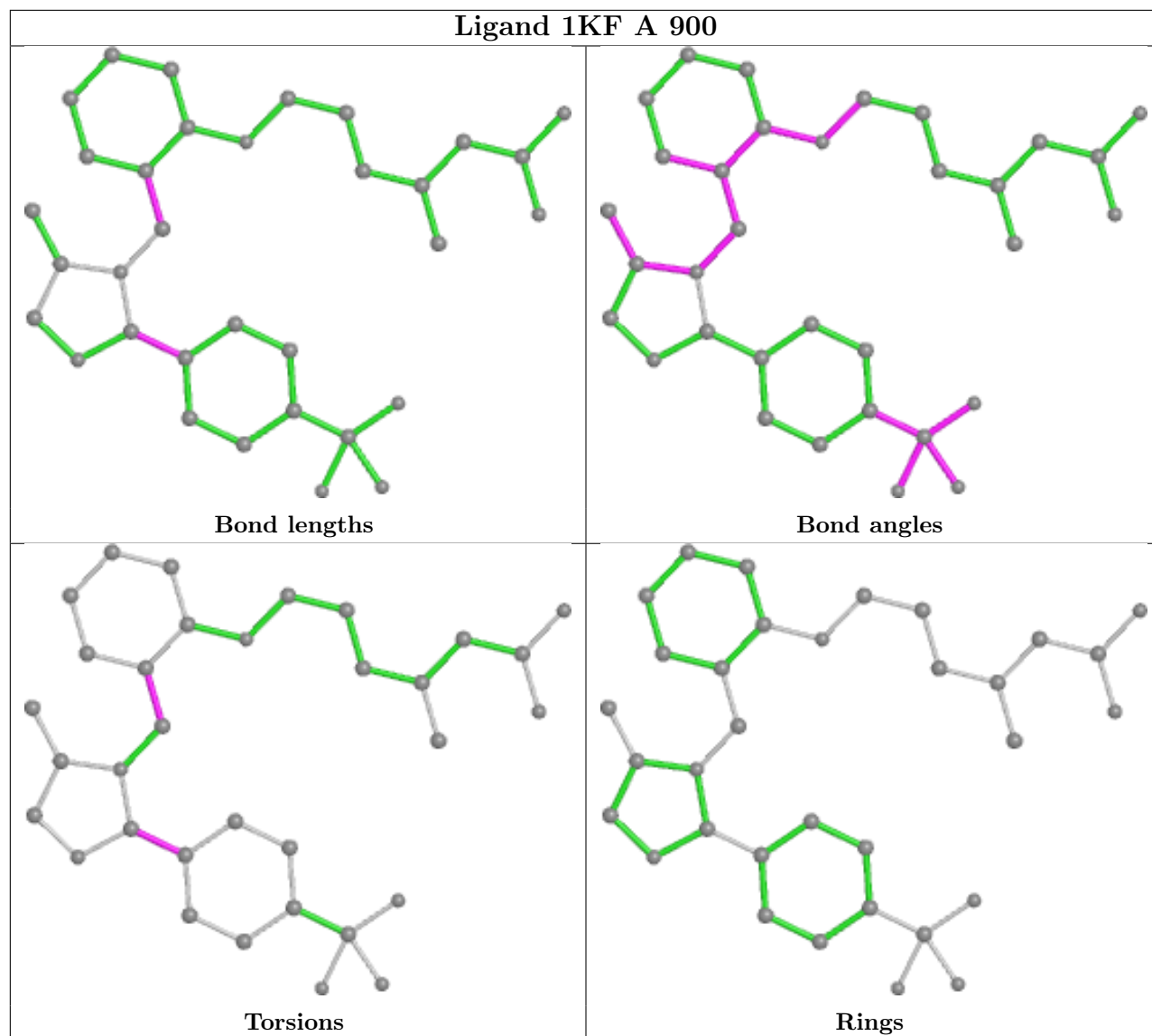
Mol	Chain	Res	Type	Atoms
2	B	900	1KF	C10-C15-C16-N17
2	A	900	1KF	C10-C15-C16-N17
2	A	900	1KF	N17-C18-C19-C20
2	A	900	1KF	N17-C18-C19-C28
2	B	900	1KF	N17-C18-C19-C20
2	B	900	1KF	N17-C18-C19-C28

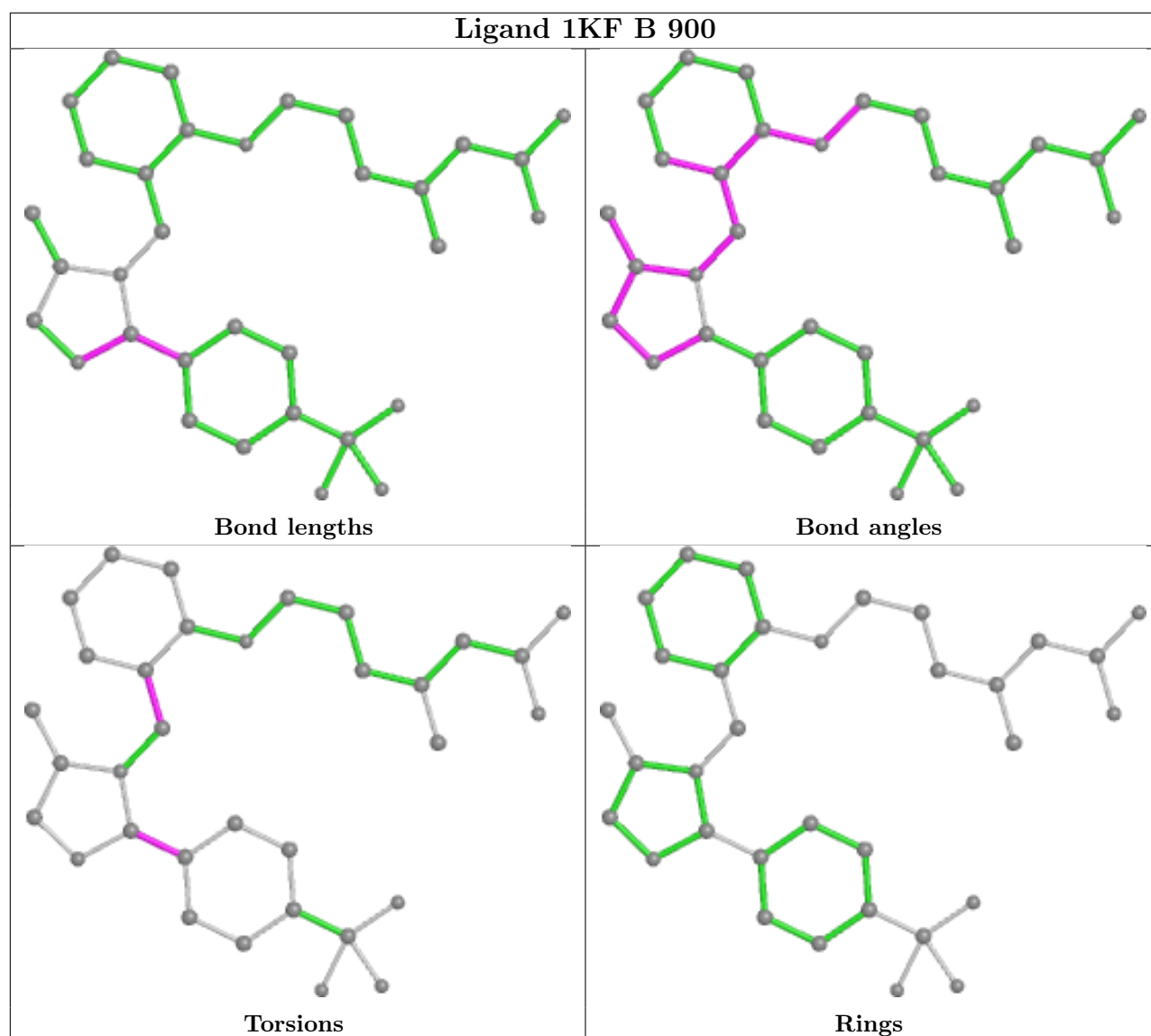
There are no ring outliers.

2 monomers are involved in 2 short contacts:

Mol	Chain	Res	Type	Clashes	Symm-Clashes
2	A	900	1KF	1	0
2	B	900	1KF	1	0

The following is a two-dimensional graphical depiction of Mogul quality analysis of bond lengths, bond angles, torsion angles, and ring geometry for all instances of the Ligand of Interest. In addition, ligands with molecular weight > 250 and outliers as shown on the validation Tables will also be included. For torsion angles, if less than 5% of the Mogul distribution of torsion angles is within 10 degrees of the torsion angle in question, then that torsion angle is considered an outlier. Any bond that is central to one or more torsion angles identified as an outlier by Mogul will be highlighted in the graph. For rings, the root-mean-square deviation (RMSD) between the ring in question and similar rings identified by Mogul is calculated over all ring torsion angles. If the average RMSD is greater than 60 degrees and the minimal RMSD between the ring in question and any Mogul-identified rings is also greater than 60 degrees, then that ring is considered an outlier. The outliers are highlighted in purple. The color gray indicates Mogul did not find sufficient equivalents in the CSD to analyse the geometry.





## 5.7 Other polymers [i](#)

There are no such residues in this entry.

## 5.8 Polymer linkage issues [i](#)

There are no chain breaks in this entry.



## 6 Fit of model and data [i](#)

### 6.1 Protein, DNA and RNA chains [i](#)

In the following table, the column labelled ‘#RSRZ > 2’ contains the number (and percentage) of RSRZ outliers, followed by percent RSRZ outliers for the chain as percentile scores relative to all X-ray entries and entries of similar resolution. The OWAB column contains the minimum, median, 95<sup>th</sup> percentile and maximum values of the occupancy-weighted average B-factor per residue. The column labelled ‘Q < 0.9’ lists the number of (and percentage) of residues with an average occupancy less than 0.9.

Mol	Chain	Analysed	<RSRZ>	#RSRZ>2	OWAB(Å <sup>2</sup> )	Q<0.9
1	A	255/275 (92%)	-0.19	5 (1%) 65 56	16, 31, 58, 90	26 (10%)
1	B	254/275 (92%)	-0.16	8 (3%) 49 39	18, 37, 63, 111	26 (10%)
All	All	509/550 (92%)	-0.17	13 (2%) 56 46	16, 34, 60, 111	52 (10%)

All (13) RSRZ outliers are listed below:

Mol	Chain	Res	Type	RSRZ
1	A	439	ASP	5.4
1	B	227	VAL	4.1
1	A	181	HIS	3.6
1	B	439	ASP	3.0
1	B	234	GLY	2.8
1	A	427	THR	2.8
1	B	181	HIS	2.5
1	B	235	LEU	2.4
1	B	225	GLY	2.3
1	B	228	TRP	2.2
1	A	418	GLN	2.2
1	B	226	LEU	2.2
1	A	425	THR	2.2

### 6.2 Non-standard residues in protein, DNA, RNA chains [i](#)

There are no non-standard protein/DNA/RNA residues in this entry.

### 6.3 Carbohydrates [i](#)

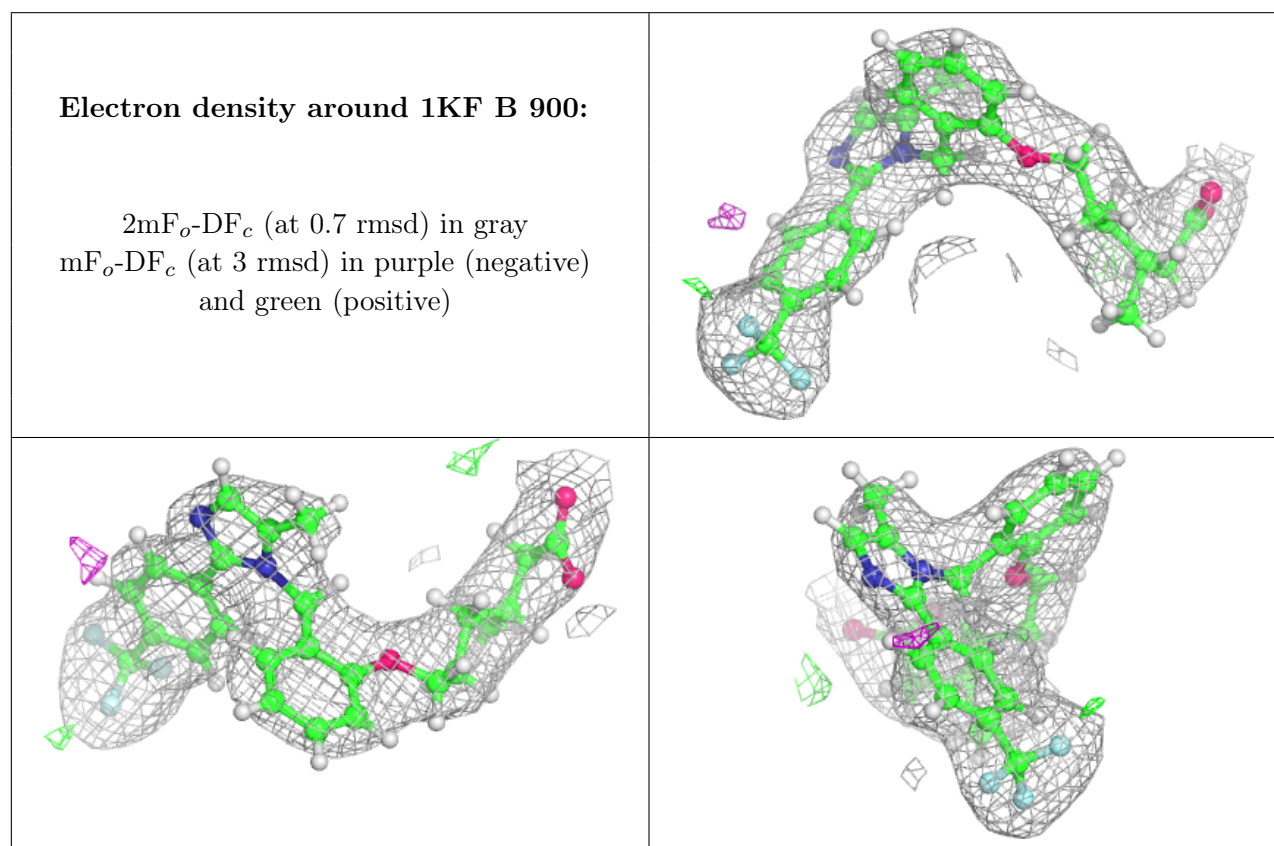
There are no monosaccharides in this entry.

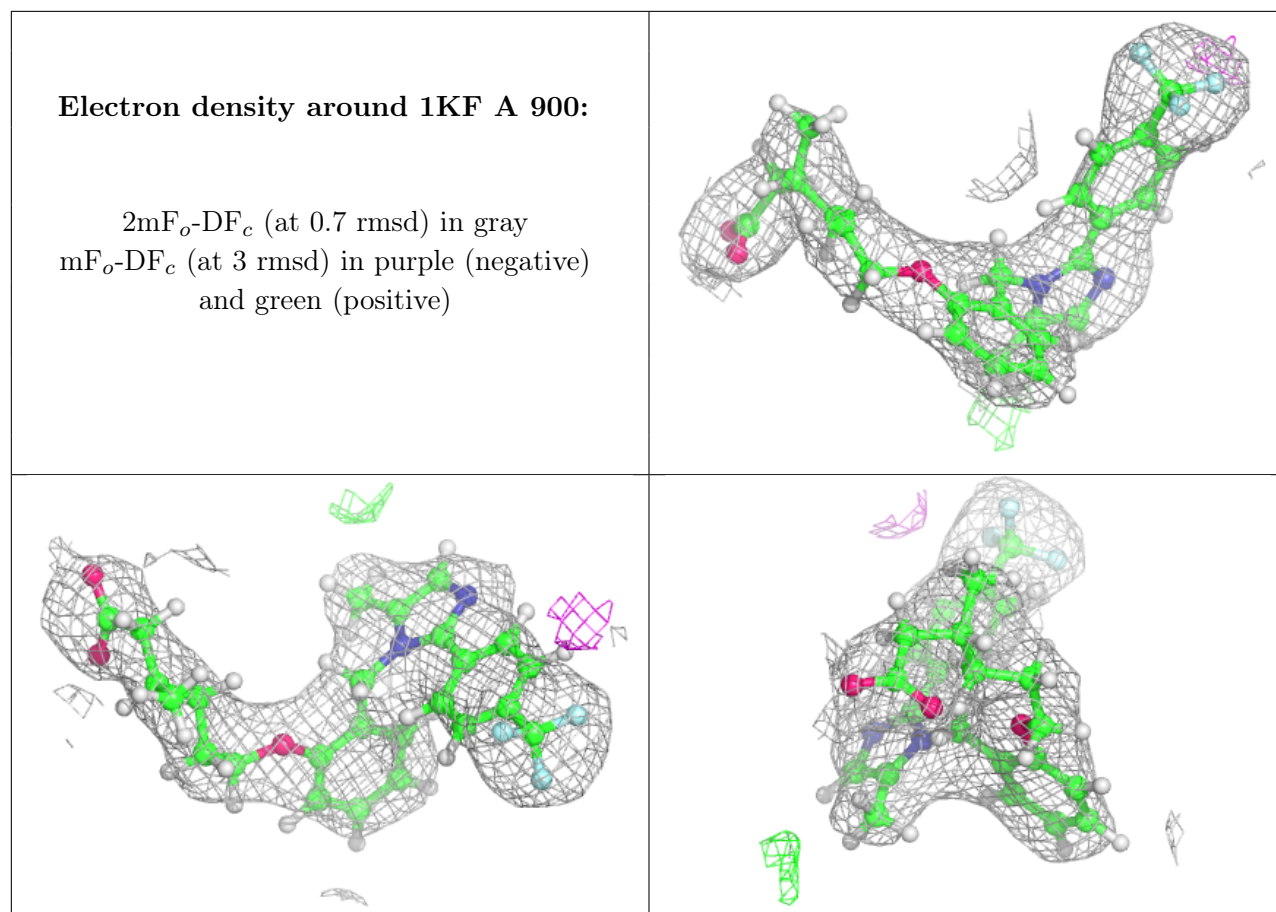
## 6.4 Ligands [i](#)

In the following table, the Atoms column lists the number of modelled atoms in the group and the number defined in the chemical component dictionary. The B-factors column lists the minimum, median, 95<sup>th</sup> percentile and maximum values of B factors of atoms in the group. The column labelled 'Q< 0.9' lists the number of atoms with occupancy less than 0.9.

Mol	Type	Chain	Res	Atoms	RSCC	RSR	B-factors(Å <sup>2</sup> )	Q<0.9
2	1KF	B	900	33/33	0.94	0.18	30,40,47,53	0
2	1KF	A	900	33/33	0.96	0.19	26,33,39,46	0

The following is a graphical depiction of the model fit to experimental electron density of all instances of the Ligand of Interest. In addition, ligands with molecular weight > 250 and outliers as shown on the geometry validation Tables will also be included. Each fit is shown from different orientation to approximate a three-dimensional view.





## 6.5 Other polymers [i](#)

There are no such residues in this entry.