



Full wwPDB X-ray Structure Validation Report ⓘ

Aug 9, 2020 – 11:57 AM BST

PDB ID : 2F5V
Title : Reaction geometry and thermostability mutant of pyranose 2-oxidase from the white-rot fungus *Peniophora* sp.
Authors : Bannwarth, M.; Bastian, S.; Heckmann-Pohl, D.; Giffhorn, F.; Schulz, G.E.
Deposited on : 2005-11-28
Resolution : 1.41 Å(reported)

This is a Full wwPDB X-ray Structure Validation Report for a publicly released PDB entry.

We welcome your comments at validation@mail.wwpdb.org

A user guide is available at

<https://www.wwpdb.org/validation/2017/XrayValidationReportHelp>

with specific help available everywhere you see the ⓘ symbol.

The following versions of software and data (see [references ⓘ](#)) were used in the production of this report:

MolProbity : 4.02b-467
Mogul : 1.8.5 (274361), CSD as541be (2020)
Xtriage (Phenix) : 1.13
EDS : 2.13.1
buster-report : 1.1.7 (2018)
Percentile statistics : 20191225.v01 (using entries in the PDB archive December 25th 2019)
Refmac : 5.8.0158
CCP4 : 7.0.044 (Gargrove)
Ideal geometry (proteins) : Engh & Huber (2001)
Ideal geometry (DNA, RNA) : Parkinson et al. (1996)
Validation Pipeline (wwPDB-VP) : 2.13.1

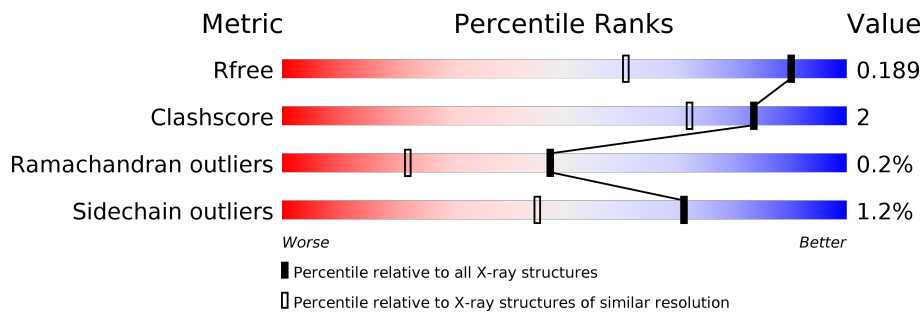
1 Overall quality at a glance

The following experimental techniques were used to determine the structure:

X-RAY DIFFRACTION

The reported resolution of this entry is 1.41 Å.

Percentile scores (ranging between 0-100) for global validation metrics of the entry are shown in the following graphic. The table shows the number of entries on which the scores are based.



Metric	Whole archive (#Entries)	Similar resolution (#Entries, resolution range(Å))
R_{free}	130704	2579 (1.44-1.40)
Clashscore	141614	2696 (1.44-1.40)
Ramachandran outliers	138981	2632 (1.44-1.40)
Sidechain outliers	138945	2631 (1.44-1.40)

The table below summarises the geometric issues observed across the polymeric chains and their fit to the electron density. The red, orange, yellow and green segments on the lower bar indicate the fraction of residues that contain outliers for ≥ 3 , 2, 1 and 0 types of geometric quality criteria respectively. A grey segment represents the fraction of residues that are not modelled. The numeric value for each fraction is indicated below the corresponding segment, with a dot representing fractions $\leq 5\%$

Mol	Chain	Length	Quality of chain
1	A	595	

2 Entry composition [i](#)

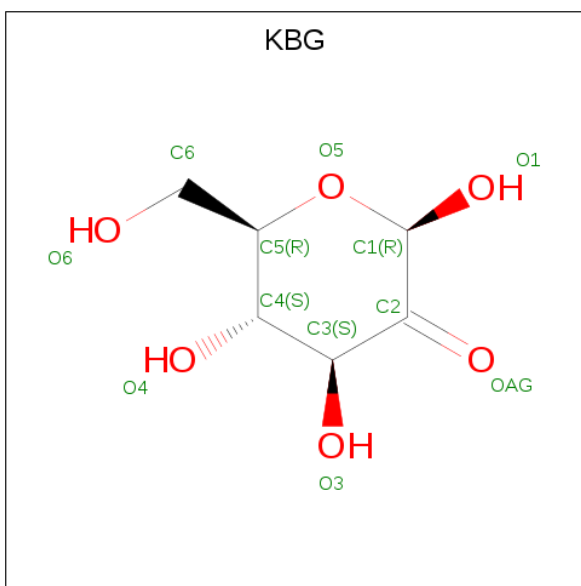
There are 6 unique types of molecules in this entry. The entry contains 5434 atoms, of which 0 are hydrogens and 0 are deuteriums.

In the tables below, the ZeroOcc column contains the number of atoms modelled with zero occupancy, the AltConf column contains the number of residues with at least one atom in alternate conformation and the Trace column contains the number of residues modelled with at most 2 atoms.

- Molecule 1 is a protein called Pyranose 2-oxidase.

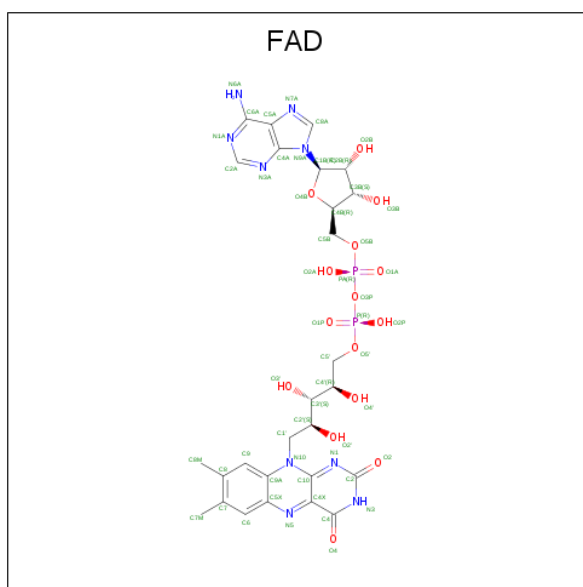
Mol	Chain	Residues	Atoms					ZeroOcc	AltConf	Trace
			Total	C	N	O	S			
1	A	577	4549	2872	778	874	25	0	0	0

- Molecule 2 is beta-D-arabino-hexopyranos-2-ulose (three-letter code: KBG) (formula: C₆H₁₀O₆).



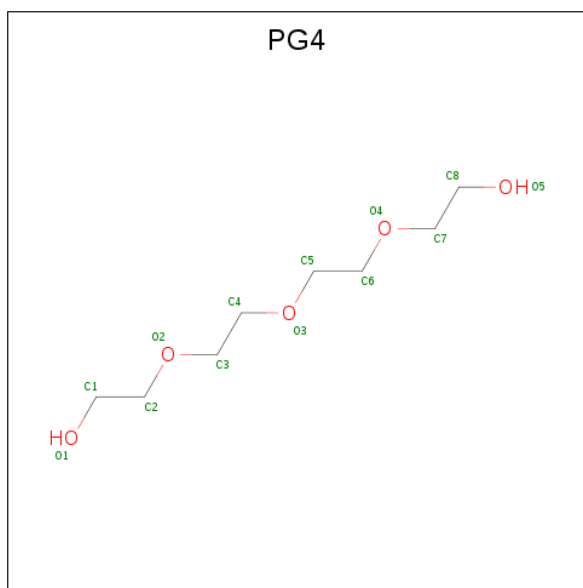
Mol	Chain	Residues	Atoms			ZeroOcc	AltConf
			Total	C	O		
2	A	1	12	6	6	0	0

- Molecule 3 is FLAVIN-ADENINE DINUCLEOTIDE (three-letter code: FAD) (formula: C₂₇H₃₃N₉O₁₅P₂).



Mol	Chain	Residues	Atoms					ZeroOcc	AltConf
			Total	C	N	O	P		
3	A	1	53	27	9	15	2	0	0

- Molecule 4 is TETRAETHYLENE GLYCOL (three-letter code: PG4) (formula: C₈H₁₈O₅).



Mol	Chain	Residues	Atoms			ZeroOcc	AltConf
			Total	C	O		
4	A	1	13	8	5	0	0

- Molecule 5 is DI(HYDROXYETHYL)ETHER (three-letter code: PEG) (formula: C₄H₁₀O₃).



Mol	Chain	Residues	Atoms	ZeroOcc	AltConf
5	A	1	Total C O 7 4 3	0	0

- Molecule 6 is water.

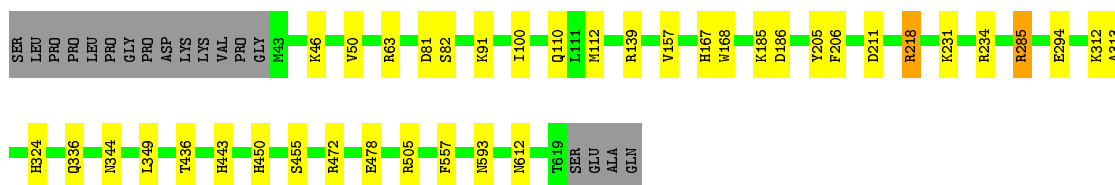
Mol	Chain	Residues	Atoms	ZeroOcc	AltConf
6	A	800	Total O 800 800	0	0

3 Residue-property plots [i](#)

These plots are drawn for all protein, RNA, DNA and oligosaccharide chains in the entry. The first graphic for a chain summarises the proportions of the various outlier classes displayed in the second graphic. The second graphic shows the sequence view annotated by issues in geometry. Residues are color-coded according to the number of geometric quality criteria for which they contain at least one outlier: green = 0, yellow = 1, orange = 2 and red = 3 or more. Stretches of 2 or more consecutive residues without any outlier are shown as a green connector. Residues present in the sample, but not in the model, are shown in grey.

- Molecule 1: Pyranose 2-oxidase

Chain A:  90% 6%



4 Data and refinement statistics

Property	Value	Source
Space group	P 42 21 2	Depositor
Cell constants a, b, c, α , β , γ	102.19Å 102.19Å 119.86Å 90.00° 90.00° 90.00°	Depositor
Resolution (Å)	62.00 – 1.41 61.89 – 1.41	Depositor EDS
% Data completeness (in resolution range)	100.0 (62.00-1.41) 98.3 (61.89-1.41)	Depositor EDS
R_{merge}	(Not available)	Depositor
R_{sym}	0.06	Depositor
$\langle I/\sigma(I) \rangle$ ¹	23.48 (at 1.41Å)	Xtrriage
Refinement program	REFMAC 5.2.0005	Depositor
R, R_{free}	0.149 , 0.178 0.160 , 0.189	Depositor DCC
R_{free} test set	2384 reflections (2.00%)	wwPDB-VP
Wilson B-factor (Å ²)	11.6	Xtrriage
Anisotropy	0.135	Xtrriage
Bulk solvent k_{sol} (e/Å ³), B_{sol} (Å ²)	0.38 , 41.5	EDS
L-test for twinning ²	$\langle L \rangle = 0.45$, $\langle L^2 \rangle = 0.27$	Xtrriage
Estimated twinning fraction	No twinning to report.	Xtrriage
F_o, F_c correlation	0.94	EDS
Total number of atoms	5434	wwPDB-VP
Average B, all atoms (Å ²)	20.0	wwPDB-VP

Xtrriage's analysis on translational NCS is as follows: *The largest off-origin peak in the Patterson function is 4.32% of the height of the origin peak. No significant pseudotranslation is detected.*

¹ Intensities estimated from amplitudes.

² Theoretical values of $\langle |L| \rangle$, $\langle L^2 \rangle$ for acentric reflections are 0.5, 0.333 respectively for untwinned datasets, and 0.375, 0.2 for perfectly twinned datasets.

5 Model quality [i](#)

5.1 Standard geometry [i](#)

Bond lengths and bond angles in the following residue types are not validated in this section: PG4, PEG, KBG, FAD

The Z score for a bond length (or angle) is the number of standard deviations the observed value is removed from the expected value. A bond length (or angle) with $|Z| > 5$ is considered an outlier worth inspection. RMSZ is the root-mean-square of all Z scores of the bond lengths (or angles).

Mol	Chain	Bond lengths		Bond angles	
		RMSZ	# Z >5	RMSZ	# Z >5
1	A	0.72	1/4665 (0.0%)	0.83	7/6343 (0.1%)

Chiral center outliers are detected by calculating the chiral volume of a chiral center and verifying if the center is modelled as a planar moiety or with the opposite hand. A planarity outlier is detected by checking planarity of atoms in a peptide group, atoms in a mainchain group or atoms of a sidechain that are expected to be planar.

Mol	Chain	#Chirality outliers	#Planarity outliers
1	A	0	2

All (1) bond length outliers are listed below:

Mol	Chain	Res	Type	Atoms	Z	Observed(Å)	Ideal(Å)
1	A	478	GLU	CD-OE1	5.45	1.31	1.25

All (7) bond angle outliers are listed below:

Mol	Chain	Res	Type	Atoms	Z	Observed(°)	Ideal(°)
1	A	218	ARG	NE-CZ-NH1	10.08	125.34	120.30
1	A	139	ARG	NE-CZ-NH1	9.48	125.04	120.30
1	A	139	ARG	NE-CZ-NH2	-9.39	115.61	120.30
1	A	505	ARG	NE-CZ-NH1	8.11	124.35	120.30
1	A	285	ARG	NE-CZ-NH1	5.51	123.06	120.30
1	A	349	LEU	CB-CG-CD2	5.25	119.92	111.00
1	A	211	ASP	CB-CG-OD1	5.08	122.88	118.30

There are no chirality outliers.

All (2) planarity outliers are listed below:

Mol	Chain	Res	Type	Group
1	A	436	THR	Peptide
1	A	455	SER	Peptide

5.2 Too-close contacts [i](#)

In the following table, the Non-H and H(model) columns list the number of non-hydrogen atoms and hydrogen atoms in the chain respectively. The H(added) column lists the number of hydrogen atoms added and optimized by MolProbity. The Clashes column lists the number of clashes within the asymmetric unit, whereas Symm-Clashes lists symmetry related clashes.

Mol	Chain	Non-H	H(model)	H(added)	Clashes	Symm-Clashes
1	A	4549	0	4395	21	0
2	A	12	0	0	0	0
3	A	53	0	30	1	0
4	A	13	0	18	0	0
5	A	7	0	10	2	0
6	A	800	0	0	5	0
All	All	5434	0	4453	22	0

The all-atom clashscore is defined as the number of clashes found per 1000 atoms (including hydrogen atoms). The all-atom clashscore for this structure is 2.

All (22) close contacts within the same asymmetric unit are listed below, sorted by their clash magnitude.

Atom-1	Atom-2	Interatomic distance (Å)	Clash overlap (Å)
1:A:110:GLN:HE21	1:A:167:HIS:HD1	1.31	0.79
1:A:91:LYS:HD3	1:A:100:ILE:HD11	1.81	0.63
1:A:450:HIS:HD2	6:A:1740:HOH:O	1.87	0.57
1:A:612:ASN:HA	5:A:1627:PEG:H12	1.87	0.56
1:A:81:ASP:HB2	6:A:1773:HOH:O	2.08	0.52
5:A:1627:PEG:H31	6:A:2311:HOH:O	2.12	0.50
1:A:218:ARG:HD2	6:A:1655:HOH:O	2.13	0.49
1:A:450:HIS:CE1	1:A:472:ARG:HH11	2.32	0.47
1:A:231:LYS:HD3	1:A:231:LYS:N	2.30	0.47
1:A:336:GLN:NE2	1:A:344:ASN:O	2.48	0.47
1:A:63:ARG:NE	1:A:205:TYR:CE1	2.84	0.46
1:A:185:LYS:HE2	1:A:557:PHE:CD2	2.51	0.46
1:A:46:LYS:HD3	1:A:312:LYS:HG3	1.98	0.45
1:A:46:LYS:HD3	1:A:312:LYS:CG	2.48	0.44
1:A:234:ARG:HE	1:A:443:HIS:CE1	2.35	0.43
1:A:157:VAL:HG21	1:A:324:HIS:HE1	1.83	0.43

Continued on next page...

Continued from previous page...

Atom-1	Atom-2	Interatomic distance (Å)	Clash overlap (Å)
1:A:63:ARG:HD3	1:A:205:TYR:CZ	2.54	0.43
1:A:231:LYS:HD3	1:A:231:LYS:H	1.83	0.43
1:A:231:LYS:CD	1:A:231:LYS:N	2.81	0.42
1:A:285:ARG:HD3	6:A:2308:HOH:O	2.20	0.41
1:A:50:VAL:HG23	1:A:313:ALA:HB2	2.02	0.40
1:A:167:HIS:CD2	3:A:1625:FAD:C7M	3.04	0.40

There are no symmetry-related clashes.

5.3 Torsion angles [i](#)

5.3.1 Protein backbone [i](#)

In the following table, the Percentiles column shows the percent Ramachandran outliers of the chain as a percentile score with respect to all X-ray entries followed by that with respect to entries of similar resolution.

The Analysed column shows the number of residues for which the backbone conformation was analysed, and the total number of residues.

Mol	Chain	Analysed	Favoured	Allowed	Outliers	Percentiles
1	A	575/595 (97%)	560 (97%)	14 (2%)	1 (0%)	47 22

All (1) Ramachandran outliers are listed below:

Mol	Chain	Res	Type
1	A	82	SER

5.3.2 Protein sidechains [i](#)

In the following table, the Percentiles column shows the percent sidechain outliers of the chain as a percentile score with respect to all X-ray entries followed by that with respect to entries of similar resolution.

The Analysed column shows the number of residues for which the sidechain conformation was analysed, and the total number of residues.

Mol	Chain	Analysed	Rotameric	Outliers	Percentiles
1	A	505/520 (97%)	499 (99%)	6 (1%)	71 45

All (6) residues with a non-rotameric sidechain are listed below:

Mol	Chain	Res	Type
1	A	112	MET
1	A	168	TRP
1	A	186	ASP
1	A	206	PHE
1	A	294	GLU
1	A	593	ASN

Some sidechains can be flipped to improve hydrogen bonding and reduce clashes. All (2) such sidechains are listed below:

Mol	Chain	Res	Type
1	A	108	GLN
1	A	450	HIS

5.3.3 RNA [i](#)

There are no RNA molecules in this entry.

5.4 Non-standard residues in protein, DNA, RNA chains [i](#)

There are no non-standard protein/DNA/RNA residues in this entry.

5.5 Carbohydrates [i](#)

There are no monosaccharides in this entry.

5.6 Ligand geometry [i](#)

4 ligands are modelled in this entry.

In the following table, the Counts columns list the number of bonds (or angles) for which Mogul statistics could be retrieved, the number of bonds (or angles) that are observed in the model and the number of bonds (or angles) that are defined in the Chemical Component Dictionary. The Link column lists molecule types, if any, to which the group is linked. The Z score for a bond length (or angle) is the number of standard deviations the observed value is removed from the expected value. A bond length (or angle) with $|Z| > 2$ is considered an outlier worth inspection. RMSZ is the root-mean-square of all Z scores of the bond lengths (or angles).

Mol	Type	Chain	Res	Link	Bond lengths			Bond angles		
					Counts	RMSZ	# Z > 2	Counts	RMSZ	# Z > 2
4	PG4	A	1626	-	12,12,12	0.68	0	11,11,11	0.64	0
3	FAD	A	1625	1	51,58,58	1.46	7 (13%)	60,89,89	2.09	10 (16%)
5	PEG	A	1627	-	6,6,6	0.95	0	5,5,5	1.00	1 (20%)
2	KBG	A	1628	-	11,12,12	1.34	1 (9%)	13,17,17	1.85	4 (30%)

In the following table, the Chirals column lists the number of chiral outliers, the number of chiral centers analysed, the number of these observed in the model and the number defined in the Chemical Component Dictionary. Similar counts are reported in the Torsion and Rings columns. '-' means no outliers of that kind were identified.

Mol	Type	Chain	Res	Link	Chirals	Torsions	Rings
4	PG4	A	1626	-	-	2/10/10/10	-
3	FAD	A	1625	1	-	2/30/50/50	0/6/6/6
5	PEG	A	1627	-	-	2/4/4/4	-
2	KBG	A	1628	-	-	0/2/22/22	0/1/1/1

All (8) bond length outliers are listed below:

Mol	Chain	Res	Type	Atoms	Z	Observed(Å)	Ideal(Å)
3	A	1625	FAD	C4-N3	4.58	1.41	1.33
3	A	1625	FAD	C10-N1	4.42	1.38	1.33
3	A	1625	FAD	O4B-C1B	3.62	1.46	1.41
3	A	1625	FAD	C5'-C4'	3.03	1.56	1.51
2	A	1628	KBG	O3-C3	-2.94	1.36	1.42
3	A	1625	FAD	C4X-N5	2.66	1.37	1.33
3	A	1625	FAD	C4X-C10	2.33	1.41	1.38
3	A	1625	FAD	C7M-C7	2.06	1.55	1.51

All (15) bond angle outliers are listed below:

Mol	Chain	Res	Type	Atoms	Z	Observed(°)	Ideal(°)
3	A	1625	FAD	C4-N3-C2	11.06	124.48	115.14
3	A	1625	FAD	C1'-N10-C9A	6.48	123.39	118.29
3	A	1625	FAD	C4X-C4-N3	-4.74	116.94	123.43
2	A	1628	KBG	O5-C5-C4	-3.24	103.80	109.69
3	A	1625	FAD	C4X-N5-C5X	2.85	119.62	116.77
2	A	1628	KBG	O5-C5-C6	2.71	113.17	106.44
2	A	1628	KBG	C6-C5-C4	-2.71	106.66	113.00
3	A	1625	FAD	C3B-C2B-C1B	2.70	105.04	100.98
3	A	1625	FAD	C4-C4X-N5	2.45	121.40	118.60
3	A	1625	FAD	O4B-C1B-C2B	-2.40	103.42	106.93

Continued on next page...

Continued from previous page...

Mol	Chain	Res	Type	Atoms	Z	Observed(°)	Ideal(°)
2	A	1628	KBG	O3-C3-C4	-2.32	105.74	110.53
3	A	1625	FAD	C4-C4X-C10	-2.27	118.45	119.95
3	A	1625	FAD	C9A-N10-C10	-2.27	118.94	121.91
3	A	1625	FAD	C4A-C5A-N7A	-2.17	107.13	109.40
5	A	1627	PEG	O2-C3-C4	2.15	119.50	110.07

There are no chirality outliers.

All (6) torsion outliers are listed below:

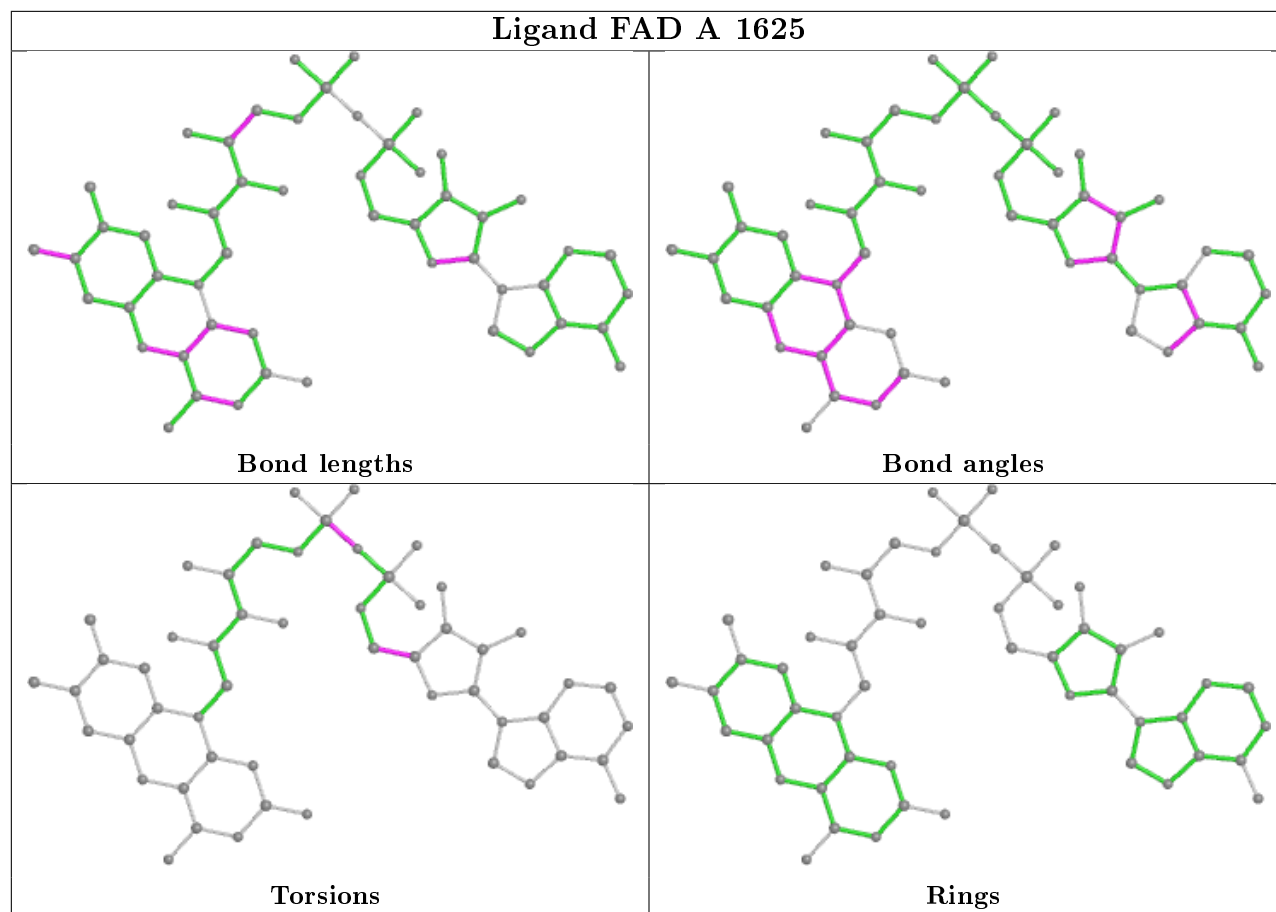
Mol	Chain	Res	Type	Atoms
5	A	1627	PEG	C1-C2-O2-C3
5	A	1627	PEG	O2-C3-C4-O4
3	A	1625	FAD	PA-O3P-P-O5'
4	A	1626	PG4	C8-C7-O4-C6
3	A	1625	FAD	O4B-C4B-C5B-O5B
4	A	1626	PG4	O2-C3-C4-O3

There are no ring outliers.

2 monomers are involved in 3 short contacts:

Mol	Chain	Res	Type	Clashes	Symm-Clashes
3	A	1625	FAD	1	0
5	A	1627	PEG	2	0

The following is a two-dimensional graphical depiction of Mogul quality analysis of bond lengths, bond angles, torsion angles, and ring geometry for all instances of the Ligand of Interest. In addition, ligands with molecular weight > 250 and outliers as shown on the validation Tables will also be included. For torsion angles, if less than 5% of the Mogul distribution of torsion angles is within 10 degrees of the torsion angle in question, then that torsion angle is considered an outlier. Any bond that is central to one or more torsion angles identified as an outlier by Mogul will be highlighted in the graph. For rings, the root-mean-square deviation (RMSD) between the ring in question and similar rings identified by Mogul is calculated over all ring torsion angles. If the average RMSD is greater than 60 degrees and the minimal RMSD between the ring in question and any Mogul-identified rings is also greater than 60 degrees, then that ring is considered an outlier. The outliers are highlighted in purple. The color gray indicates Mogul did not find sufficient equivalents in the CSD to analyse the geometry.



5.7 Other polymers [i](#)

There are no such residues in this entry.

5.8 Polymer linkage issues [i](#)

There are no chain breaks in this entry.

6 Fit of model and data [i](#)

6.1 Protein, DNA and RNA chains [i](#)

Unable to reproduce the depositors R factor - this section is therefore empty.

6.2 Non-standard residues in protein, DNA, RNA chains [i](#)

Unable to reproduce the depositors R factor - this section is therefore empty.

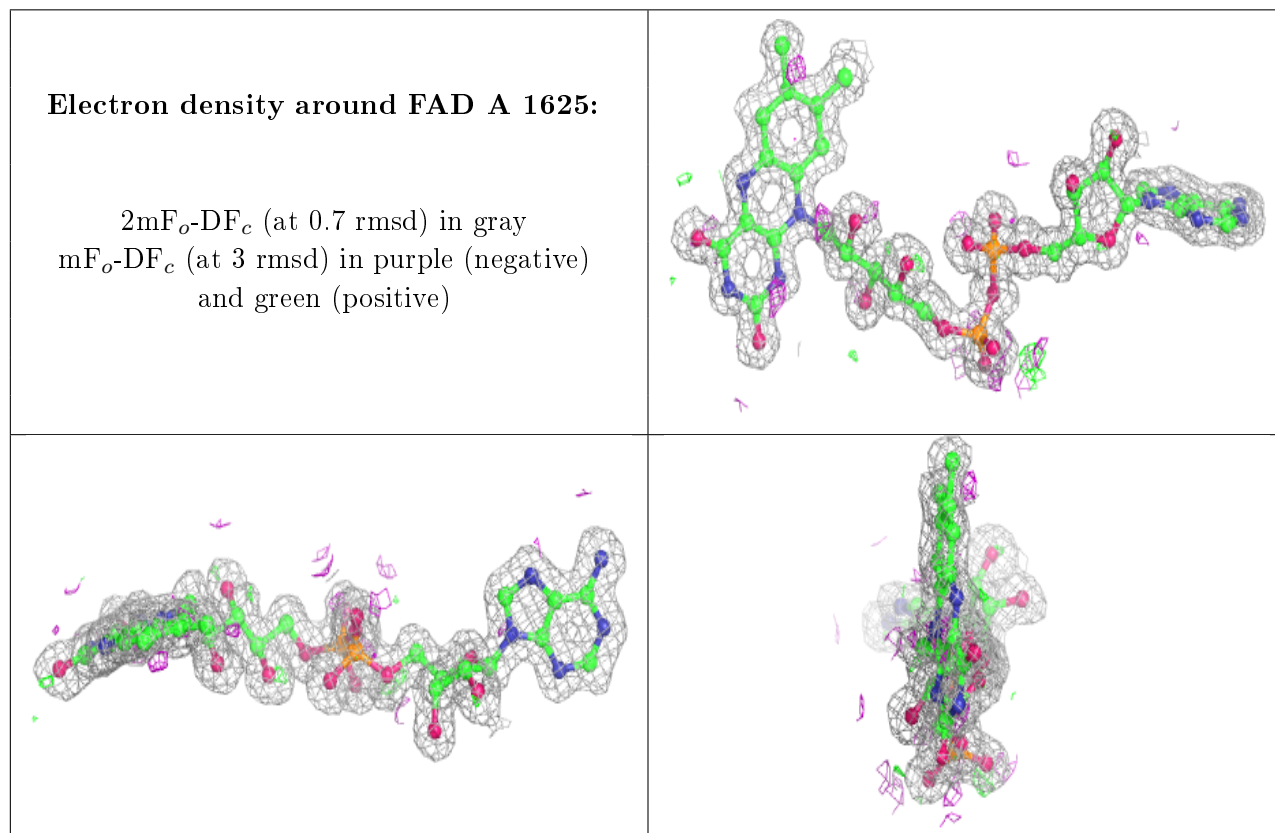
6.3 Carbohydrates [i](#)

Unable to reproduce the depositors R factor - this section is therefore empty.

6.4 Ligands [i](#)

Unable to reproduce the depositors R factor - this section is therefore empty.

The following is a graphical depiction of the model fit to experimental electron density of all instances of the Ligand of Interest. In addition, ligands with molecular weight > 250 and outliers as shown on the geometry validation Tables will also be included. Each fit is shown from different orientation to approximate a three-dimensional view.



6.5 Other polymers

Unable to reproduce the depositors R factor - this section is therefore empty.