



Full wwPDB X-ray Structure Validation Report ⓘ

May 26, 2020 – 05:03 pm BST

PDB ID : 2F3F
Title : Crystal Structure of the Bace complex with BDF488, a macrocyclic inhibitor
Authors : Rondeau, J.-M.
Deposited on : 2005-11-21
Resolution : 2.30 Å(reported)

This is a Full wwPDB X-ray Structure Validation Report for a publicly released PDB entry.

We welcome your comments at validation@mail.wwpdb.org

A user guide is available at

<https://www.wwpdb.org/validation/2017/XrayValidationReportHelp>

with specific help available everywhere you see the ⓘ symbol.

The following versions of software and data (see [references ⓘ](#)) were used in the production of this report:

MolProbity : 4.02b-467
Mogul : 1.8.5 (274361), CSD as541be (2020)
Xtriage (Phenix) : 1.13
EDS : 2.11
buster-report : 1.1.7 (2018)
Percentile statistics : 20191225.v01 (using entries in the PDB archive December 25th 2019)
Refmac : 5.8.0158
CCP4 : 7.0.044 (Gargrove)
Ideal geometry (proteins) : Engh & Huber (2001)
Ideal geometry (DNA, RNA) : Parkinson et al. (1996)
Validation Pipeline (wwPDB-VP) : 2.11

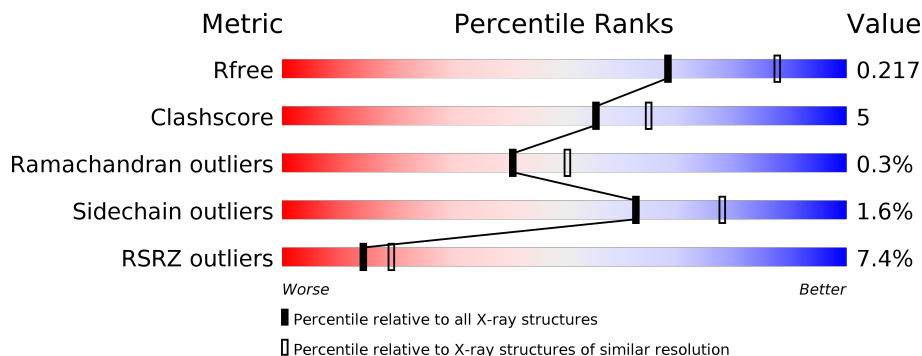
1 Overall quality at a glance

The following experimental techniques were used to determine the structure:

X-RAY DIFFRACTION

The reported resolution of this entry is 2.30 Å.

Percentile scores (ranging between 0-100) for global validation metrics of the entry are shown in the following graphic. The table shows the number of entries on which the scores are based.



Metric	Whole archive (#Entries)	Similar resolution (#Entries, resolution range(Å))
R_{free}	130704	5042 (2.30-2.30)
Clashscore	141614	5643 (2.30-2.30)
Ramachandran outliers	138981	5575 (2.30-2.30)
Sidechain outliers	138945	5575 (2.30-2.30)
RSRZ outliers	127900	4938 (2.30-2.30)

The table below summarises the geometric issues observed across the polymeric chains and their fit to the electron density. The red, orange, yellow and green segments on the lower bar indicate the fraction of residues that contain outliers for ≥ 3 , 2, 1 and 0 types of geometric quality criteria respectively. A grey segment represents the fraction of residues that are not modelled. The numeric value for each fraction is indicated below the corresponding segment, with a dot representing fractions $\leq 5\%$. The upper red bar (where present) indicates the fraction of residues that have poor fit to the electron density. The numeric value is given above the bar.

Mol	Chain	Length	Quality of chain
1	A	402	 6% 82% 11% 7%
1	B	402	 9% 83% 10% • 6%
1	C	402	 5% 82% 11% • 6%

2 Entry composition [i](#)

There are 3 unique types of molecules in this entry. The entry contains 9495 atoms, of which 0 are hydrogens and 0 are deuteriums.

In the tables below, the ZeroOcc column contains the number of atoms modelled with zero occupancy, the AltConf column contains the number of residues with at least one atom in alternate conformation and the Trace column contains the number of residues modelled with at most 2 atoms.

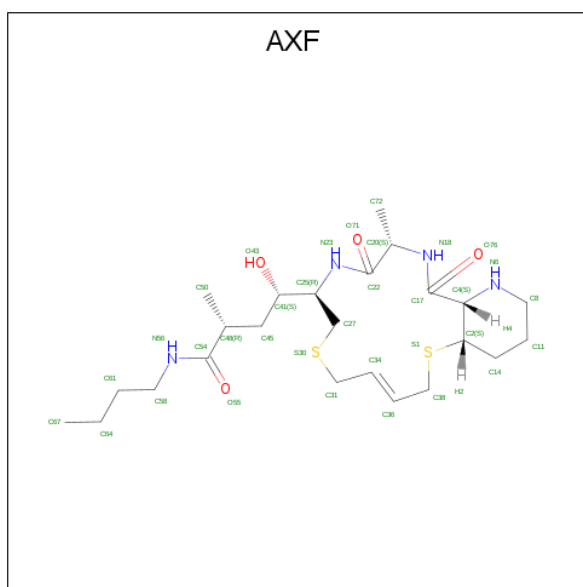
- Molecule 1 is a protein called Beta-secretase 1.

Mol	Chain	Residues	Atoms					ZeroOcc	AltConf	Trace
			Total	C	N	O	S			
1	A	375	2953	1890	491	558	14	0	0	0
1	B	377	2966	1898	493	561	14	0	0	0
1	C	377	2966	1898	493	561	14	0	0	0

There are 6 discrepancies between the modelled and reference sequences:

Chain	Residue	Modelled	Actual	Comment	Reference
A	33P	GLY	-	CLONING ARTIFACT	UNP P56817
A	34P	PRO	-	CLONING ARTIFACT	UNP P56817
B	33P	GLY	-	CLONING ARTIFACT	UNP P56817
B	34P	PRO	-	CLONING ARTIFACT	UNP P56817
C	33P	GLY	-	CLONING ARTIFACT	UNP P56817
C	34P	PRO	-	CLONING ARTIFACT	UNP P56817

- Molecule 2 is (2R,4S)-N-BUTYL-4-HYDROXY-2-METHYL- 4-((E)-(4AS,12R,15S,17AS)-1 5-METHYL -14,17-DIOXO-2,3,4,4A,6,9,11,12,13, 14,15,16,17,17A-TETRADECAHYDRO-1H-5 ,10-DITHIA-1,13,16-TRIAZA-BENZOCYCL OPENTADECEN-12-YL)-BUTYRAMI DE (three-letter code: AXF) (formula: C₂₄H₄₂N₄O₄S₂).



Mol	Chain	Residues	Atoms					ZeroOcc	AltConf
			Total	C	N	O	S		
2	A	1	34	24	4	4	2	0	0
2	B	1	34	24	4	4	2	0	0
2	C	1	34	24	4	4	2	0	0

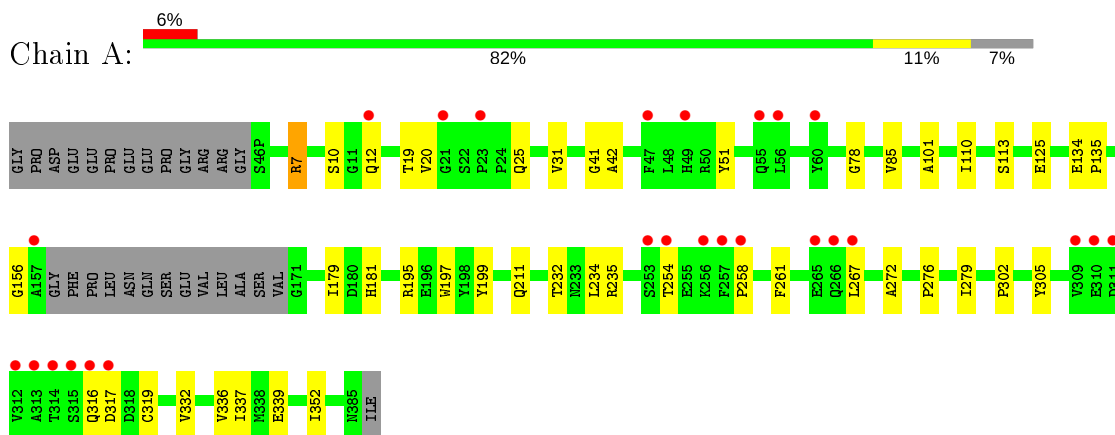
- Molecule 3 is water.

Mol	Chain	Residues	Atoms		ZeroOcc	AltConf
			Total	O		
3	A	170	170	170	0	0
3	B	159	159	159	0	0
3	C	179	179	179	0	0

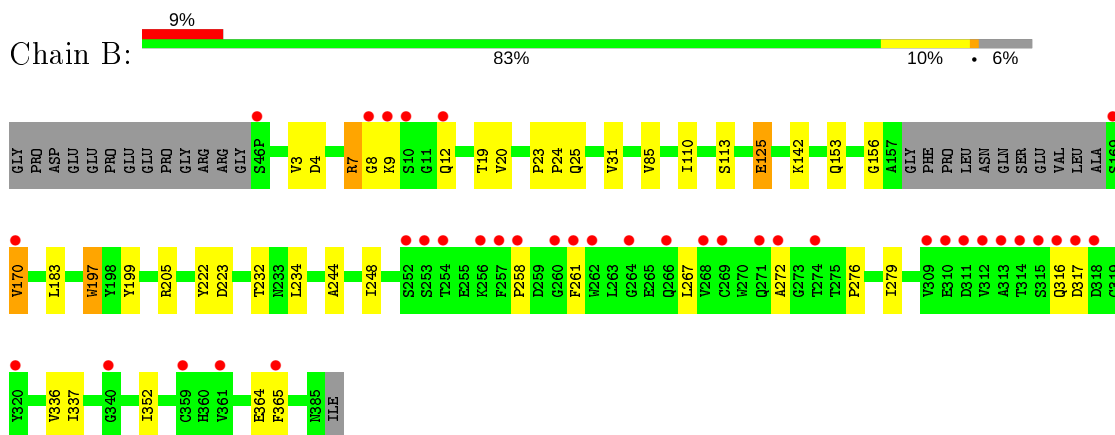
3 Residue-property plots [i](#)

These plots are drawn for all protein, RNA and DNA chains in the entry. The first graphic for a chain summarises the proportions of the various outlier classes displayed in the second graphic. The second graphic shows the sequence view annotated by issues in geometry and electron density. Residues are color-coded according to the number of geometric quality criteria for which they contain at least one outlier: green = 0, yellow = 1, orange = 2 and red = 3 or more. A red dot above a residue indicates a poor fit to the electron density ($RSRZ > 2$). Stretches of 2 or more consecutive residues without any outlier are shown as a green connector. Residues present in the sample, but not in the model, are shown in grey.

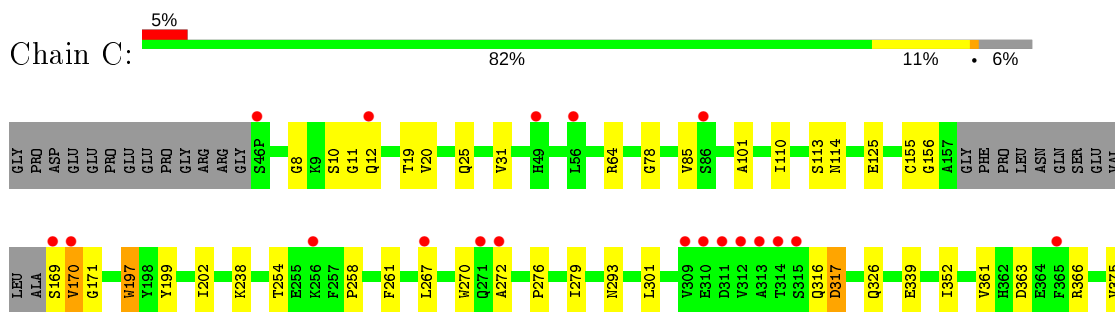
- Molecule 1: Beta-secretase 1

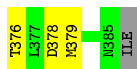


- Molecule 1: Beta-secretase 1



- Molecule 1: Beta-secretase 1





4 Data and refinement statistics

Property	Value	Source
Space group	P 1 21 1	Depositor
Cell constants a, b, c, α , β , γ	82.25Å 103.20Å 101.00Å 90.00° 103.03° 90.00°	Depositor
Resolution (Å)	63.29 – 2.30 63.29 – 2.31	Depositor EDS
% Data completeness (in resolution range)	99.3 (63.29-2.30) 99.4 (63.29-2.31)	Depositor EDS
R_{merge}	0.10	Depositor
R_{sym}	(Not available)	Depositor
$\langle I/\sigma(I) \rangle$ ¹	3.29 (at 2.32Å)	Xtrriage
Refinement program	CNS, CNX 2005	Depositor
R, R_{free}	0.190 , 0.220 0.187 , 0.217	Depositor DCC
R_{free} test set	3670 reflections (5.08%)	wwPDB-VP
Wilson B-factor (Å ²)	42.1	Xtrriage
Anisotropy	0.420	Xtrriage
Bulk solvent k_{sol} (e/Å ³), B_{sol} (Å ²)	0.35 , 56.6	EDS
L-test for twinning ²	$\langle L \rangle = 0.47$, $\langle L^2 \rangle = 0.29$	Xtrriage
Estimated twinning fraction	No twinning to report.	Xtrriage
F_o, F_c correlation	0.95	EDS
Total number of atoms	9495	wwPDB-VP
Average B, all atoms (Å ²)	50.0	wwPDB-VP

Xtrriage's analysis on translational NCS is as follows: *The largest off-origin peak in the Patterson function is 3.76% of the height of the origin peak. No significant pseudotranslation is detected.*

¹Intensities estimated from amplitudes.

²Theoretical values of $\langle |L| \rangle$, $\langle L^2 \rangle$ for acentric reflections are 0.5, 0.333 respectively for untwinned datasets, and 0.375, 0.2 for perfectly twinned datasets.

5 Model quality [i](#)

5.1 Standard geometry [i](#)

Bond lengths and bond angles in the following residue types are not validated in this section: AXF

The Z score for a bond length (or angle) is the number of standard deviations the observed value is removed from the expected value. A bond length (or angle) with $|Z| > 5$ is considered an outlier worth inspection. RMSZ is the root-mean-square of all Z scores of the bond lengths (or angles).

Mol	Chain	Bond lengths		Bond angles	
		RMSZ	# Z >5	RMSZ	# Z >5
1	A	0.34	0/3028	0.50	0/4115
1	B	0.34	0/3041	0.50	0/4133
1	C	0.33	0/3041	0.50	0/4133
All	All	0.34	0/9110	0.50	0/12381

There are no bond length outliers.

There are no bond angle outliers.

There are no chirality outliers.

There are no planarity outliers.

5.2 Too-close contacts [i](#)

In the following table, the Non-H and H(model) columns list the number of non-hydrogen atoms and hydrogen atoms in the chain respectively. The H(added) column lists the number of hydrogen atoms added and optimized by MolProbity. The Clashes column lists the number of clashes within the asymmetric unit, whereas Symm-Clashes lists symmetry related clashes.

Mol	Chain	Non-H	H(model)	H(added)	Clashes	Symm-Clashes
1	A	2953	0	2861	28	0
1	B	2966	0	2875	28	0
1	C	2966	0	2875	35	0
2	A	34	0	42	0	0
2	B	34	0	42	0	0
2	C	34	0	42	1	0
3	A	170	0	0	1	0
3	B	159	0	0	1	0
3	C	179	0	0	4	0
All	All	9495	0	8737	90	0

The all-atom clashscore is defined as the number of clashes found per 1000 atoms (including hydrogen atoms). The all-atom clashscore for this structure is 5.

All (90) close contacts within the same asymmetric unit are listed below, sorted by their clash magnitude.

Atom-1	Atom-2	Interatomic distance (Å)	Clash overlap (Å)
1:A:267:LEU:HD23	1:A:267:LEU:H	1.48	0.79
1:B:267:LEU:HD23	1:B:267:LEU:H	1.48	0.76
1:C:267:LEU:H	1:C:267:LEU:HD23	1.50	0.73
1:B:8:GLY:O	1:B:170:VAL:HG23	1.89	0.73
1:A:7:ARG:HG2	1:A:7:ARG:HH11	1.54	0.72
1:C:155:CYS:O	1:C:170:VAL:HG13	1.95	0.66
1:B:142:LYS:HG2	3:B:711:HOH:O	1.97	0.65
1:B:156:GLY:C	1:B:170:VAL:HG11	2.16	0.65
1:C:170:VAL:HG12	1:C:171:GLY:N	2.13	0.64
1:B:276:PRO:O	1:B:279:ILE:HG12	1.98	0.63
1:C:10:SER:HB3	1:C:339:GLU:OE1	1.99	0.62
1:C:155:CYS:O	1:C:170:VAL:CG1	2.51	0.59
1:A:234:LEU:HD13	1:A:337:ILE:CD1	2.33	0.58
1:A:276:PRO:O	1:A:279:ILE:HG12	2.04	0.58
1:C:276:PRO:O	1:C:279:ILE:HG12	2.03	0.58
1:C:202:ILE:CD1	1:C:379:MET:HG3	2.34	0.57
1:B:7:ARG:HH11	1:B:7:ARG:HG2	1.69	0.57
1:C:20:VAL:HG12	1:C:85:VAL:HG22	1.88	0.56
1:A:7:ARG:HG2	1:A:7:ARG:NH1	2.20	0.55
1:A:10:SER:HB2	1:A:339:GLU:OE1	2.07	0.54
1:B:364:GLU:HG3	1:B:365:PHE:CD1	2.43	0.54
1:C:11:GLY:O	2:C:603:AXF:H82	2.06	0.54
1:C:8:GLY:O	1:C:170:VAL:HB	2.08	0.53
1:A:234:LEU:HD13	1:A:337:ILE:HD11	1.90	0.53
1:C:272:ALA:HB2	1:C:316:GLN:O	2.08	0.53
1:C:64:ARG:HG2	1:C:64:ARG:HH11	1.75	0.52
1:A:254:THR:HG21	1:C:254:THR:HG21	1.93	0.51
1:C:156:GLY:O	1:C:170:VAL:HG13	2.12	0.50
1:A:20:VAL:HG12	1:A:85:VAL:HG22	1.94	0.50
1:A:19:THR:HA	1:A:25:GLN:O	2.13	0.49
1:B:20:VAL:HG12	1:B:85:VAL:HG22	1.94	0.49
1:C:363:ASP:HB3	1:C:366:ARG:O	2.12	0.49
1:C:110:ILE:HB	1:C:113:SER:HB3	1.95	0.49
1:A:272:ALA:HB2	1:A:316:GLN:O	2.13	0.49
1:B:125:GLU:HG2	1:B:197:TRP:HB3	1.95	0.48
1:C:270:TRP:O	1:C:317:ASP:HB3	2.13	0.48
1:B:272:ALA:HB2	1:B:316:GLN:O	2.13	0.48

Continued on next page...

Continued from previous page...

Atom-1	Atom-2	Interatomic distance (Å)	Clash overlap (Å)
1:C:267:LEU:N	1:C:267:LEU:HD23	2.26	0.47
1:C:293:ASN:HA	1:C:375:VAL:HA	1.96	0.47
1:C:8:GLY:HA2	3:C:722:HOH:O	2.14	0.47
1:A:110:ILE:HB	1:A:113:SER:HB3	1.97	0.47
1:B:125:GLU:HG2	1:B:197:TRP:CB	2.45	0.47
1:C:125:GLU:HG2	1:C:197:TRP:HB3	1.95	0.47
1:B:232:THR:O	1:B:336:VAL:HG13	2.16	0.46
1:A:267:LEU:HD23	1:A:267:LEU:N	2.24	0.46
1:B:222:TYR:HA	1:B:223:ASP:HA	1.63	0.46
1:B:110:ILE:HB	1:B:113:SER:HB3	1.98	0.45
1:B:267:LEU:HD23	1:B:267:LEU:N	2.25	0.45
1:B:31:VAL:O	1:B:31:VAL:HG23	2.16	0.45
1:C:19:THR:HA	1:C:25:GLN:O	2.16	0.45
1:B:258:PRO:O	1:B:261:PHE:HB3	2.17	0.45
1:B:125:GLU:O	1:B:125:GLU:HG3	2.17	0.45
1:A:181:HIS:HB3	3:A:763:HOH:O	2.17	0.44
1:C:258:PRO:O	1:C:261:PHE:HB3	2.17	0.44
1:A:267:LEU:HD12	1:A:319:CYS:HB3	2.00	0.44
1:A:179:ILE:HG22	1:A:181:HIS:HD2	1.82	0.44
1:C:169:SER:O	1:C:170:VAL:HG23	2.18	0.44
1:C:238:LYS:HG3	1:C:326:GLN:OE1	2.18	0.43
1:C:114:ASN:ND2	3:C:651:HOH:O	2.50	0.43
1:C:378:ASP:HB2	3:C:691:HOH:O	2.18	0.43
1:C:202:ILE:HD11	1:C:379:MET:HG3	1.99	0.43
1:A:234:LEU:HD13	1:A:337:ILE:HD12	2.00	0.43
1:B:153:GLN:OE1	1:B:183:LEU:HD22	2.19	0.43
1:C:31:VAL:O	1:C:31:VAL:HG23	2.18	0.43
1:A:258:PRO:O	1:A:261:PHE:HB3	2.18	0.43
1:B:234:LEU:HB2	1:B:337:ILE:HD11	2.01	0.42
1:B:3:VAL:O	1:B:4:ASP:HB2	2.19	0.42
1:A:125:GLU:CD	1:A:195:ARG:HH21	2.23	0.42
1:A:232:THR:O	1:A:336:VAL:HG13	2.18	0.42
1:B:142:LYS:HE2	1:B:142:LYS:HB3	1.91	0.42
1:A:235:ARG:HB2	1:A:332:VAL:HB	2.02	0.42
1:B:156:GLY:O	1:B:170:VAL:HG11	2.20	0.42
1:B:19:THR:HA	1:B:25:GLN:O	2.19	0.42
1:C:125:GLU:HG3	1:C:125:GLU:O	2.20	0.42
1:A:199:TYR:HB3	1:A:352:ILE:HD11	2.02	0.41
1:B:199:TYR:HB3	1:B:352:ILE:HD11	2.02	0.41
1:C:376:THR:HB	3:C:639:HOH:O	2.20	0.41
1:A:31:VAL:HG23	1:A:31:VAL:O	2.19	0.41

Continued on next page...

Continued from previous page...

Atom-1	Atom-2	Interatomic distance (Å)	Clash overlap (Å)
1:A:42:ALA:CB	1:A:101:ALA:HB1	2.49	0.41
1:B:7:ARG:NH1	1:B:7:ARG:HG2	2.33	0.41
1:C:301:LEU:HD12	1:C:361:VAL:CG2	2.50	0.41
1:B:244:ALA:O	1:B:248:ILE:HG13	2.20	0.41
1:A:134:GLU:HA	1:A:135:PRO:HD3	1.96	0.41
1:C:78:GLY:HA3	1:C:101:ALA:O	2.21	0.41
1:C:156:GLY:O	1:C:170:VAL:HG22	2.21	0.40
1:A:78:GLY:HA3	1:A:101:ALA:O	2.21	0.40
1:A:302:PRO:HA	1:A:305:TYR:CE2	2.56	0.40
1:A:41:GLY:O	1:A:51:TYR:HB2	2.22	0.40
1:B:23:PRO:HA	1:B:24:PRO:HD3	1.96	0.40
1:C:199:TYR:HB3	1:C:352:ILE:HD11	2.02	0.40

There are no symmetry-related clashes.

5.3 Torsion angles [i](#)

5.3.1 Protein backbone [i](#)

In the following table, the Percentiles column shows the percent Ramachandran outliers of the chain as a percentile score with respect to all X-ray entries followed by that with respect to entries of similar resolution.

The Analysed column shows the number of residues for which the backbone conformation was analysed, and the total number of residues.

Mol	Chain	Analysed	Favoured	Allowed	Outliers	Percentiles	
1	A	371/402 (92%)	357 (96%)	13 (4%)	1 (0%)	41	50
1	B	373/402 (93%)	358 (96%)	14 (4%)	1 (0%)	41	50
1	C	373/402 (93%)	358 (96%)	14 (4%)	1 (0%)	41	50
All	All	1117/1206 (93%)	1073 (96%)	41 (4%)	3 (0%)	41	50

All (3) Ramachandran outliers are listed below:

Mol	Chain	Res	Type
1	A	156	GLY
1	C	170	VAL
1	B	9	LYS

5.3.2 Protein sidechains [i](#)

In the following table, the Percentiles column shows the percent sidechain outliers of the chain as a percentile score with respect to all X-ray entries followed by that with respect to entries of similar resolution.

The Analysed column shows the number of residues for which the sidechain conformation was analysed, and the total number of residues.

Mol	Chain	Analysed	Rotameric	Outliers	Percentiles	
1	A	320/342 (94%)	315 (98%)	5 (2%)	62	78
1	B	322/342 (94%)	315 (98%)	7 (2%)	52	69
1	C	322/342 (94%)	319 (99%)	3 (1%)	78	89
All	All	964/1026 (94%)	949 (98%)	15 (2%)	62	78

All (15) residues with a non-rotameric sidechain are listed below:

Mol	Chain	Res	Type
1	A	7	ARG
1	A	12	GLN
1	A	197	TRP
1	A	211	GLN
1	A	317	ASP
1	B	7	ARG
1	B	12	GLN
1	B	125	GLU
1	B	170	VAL
1	B	197	TRP
1	B	205	ARG
1	B	317	ASP
1	C	12	GLN
1	C	197	TRP
1	C	317	ASP

Some sidechains can be flipped to improve hydrogen bonding and reduce clashes. All (12) such sidechains are listed below:

Mol	Chain	Res	Type
1	A	12	GLN
1	A	114	ASN
1	A	181	HIS
1	A	326	GLN
1	B	12	GLN
1	B	114	ASN

Continued on next page...

Continued from previous page...

Mol	Chain	Res	Type
1	B	209	ASN
1	B	293	ASN
1	B	326	GLN
1	C	12	GLN
1	C	114	ASN
1	C	211	GLN

5.3.3 RNA [i](#)

There are no RNA molecules in this entry.

5.4 Non-standard residues in protein, DNA, RNA chains [i](#)

There are no non-standard protein/DNA/RNA residues in this entry.

5.5 Carbohydrates [i](#)

There are no carbohydrates in this entry.

5.6 Ligand geometry [i](#)

3 ligands are modelled in this entry.

In the following table, the Counts columns list the number of bonds (or angles) for which Mogul statistics could be retrieved, the number of bonds (or angles) that are observed in the model and the number of bonds (or angles) that are defined in the Chemical Component Dictionary. The Link column lists molecule types, if any, to which the group is linked. The Z score for a bond length (or angle) is the number of standard deviations the observed value is removed from the expected value. A bond length (or angle) with $|Z| > 2$ is considered an outlier worth inspection. RMSZ is the root-mean-square of all Z scores of the bond lengths (or angles).

Mol	Type	Chain	Res	Link	Bond lengths			Bond angles		
					Counts	RMSZ	$\# Z > 2$	Counts	RMSZ	$\# Z > 2$
2	AXF	B	602	-	33,35,35	0.92	0	32,45,45	2.09	7 (21%)
2	AXF	C	603	-	33,35,35	0.85	0	32,45,45	2.06	5 (15%)
2	AXF	A	601	-	33,35,35	0.82	0	32,45,45	2.09	5 (15%)

In the following table, the Chirals column lists the number of chiral outliers, the number of chiral centers analysed, the number of these observed in the model and the number defined in the Chemical Component Dictionary. Similar counts are reported in the Torsion and Rings columns.

'-' means no outliers of that kind were identified.

Mol	Type	Chain	Res	Link	Chirals	Torsions	Rings
2	AXF	B	602	-	-	5/43/54/54	0/1/2/2
2	AXF	C	603	-	-	5/43/54/54	0/1/2/2
2	AXF	A	601	-	-	6/43/54/54	0/1/2/2

There are no bond length outliers.

All (17) bond angle outliers are listed below:

Mol	Chain	Res	Type	Atoms	Z	Observed(°)	Ideal(°)
2	A	601	AXF	C34-C31-S30	-8.10	101.05	113.60
2	B	602	AXF	C34-C31-S30	-8.08	101.08	113.60
2	C	603	AXF	C34-C31-S30	-7.74	101.60	113.60
2	A	601	AXF	C48-C45-C41	-5.16	105.59	114.74
2	B	602	AXF	C48-C45-C41	-5.02	105.85	114.74
2	C	603	AXF	C48-C45-C41	-4.96	105.95	114.74
2	C	603	AXF	C72-C20-C22	3.48	116.76	110.14
2	B	602	AXF	C22-C20-N18	-3.44	103.08	111.60
2	A	601	AXF	C22-C20-N18	-3.25	103.55	111.60
2	C	603	AXF	C22-C20-N18	-3.25	103.56	111.60
2	A	601	AXF	C72-C20-C22	3.09	116.02	110.14
2	B	602	AXF	C72-C20-C22	3.00	115.85	110.14
2	C	603	AXF	C41-C25-N23	2.46	114.66	109.92
2	A	601	AXF	C41-C25-N23	2.34	114.42	109.92
2	B	602	AXF	C41-C25-N23	2.08	113.93	109.92
2	B	602	AXF	C31-C34-C36	-2.05	119.94	125.24
2	B	602	AXF	C25-N23-C22	-2.02	119.50	123.07

There are no chirality outliers.

All (16) torsion outliers are listed below:

Mol	Chain	Res	Type	Atoms
2	A	601	AXF	N18-C17-C4-C2
2	C	603	AXF	N18-C17-C4-C2
2	A	601	AXF	O76-C17-C4-C2
2	C	603	AXF	O76-C17-C4-C2
2	B	602	AXF	N18-C17-C4-C2
2	B	602	AXF	O76-C17-C4-C2
2	C	603	AXF	C72-C20-C22-O71
2	B	602	AXF	C72-C20-C22-O71
2	C	603	AXF	C72-C20-C22-N23
2	A	601	AXF	C72-C20-C22-N23

Continued on next page...

Continued from previous page...

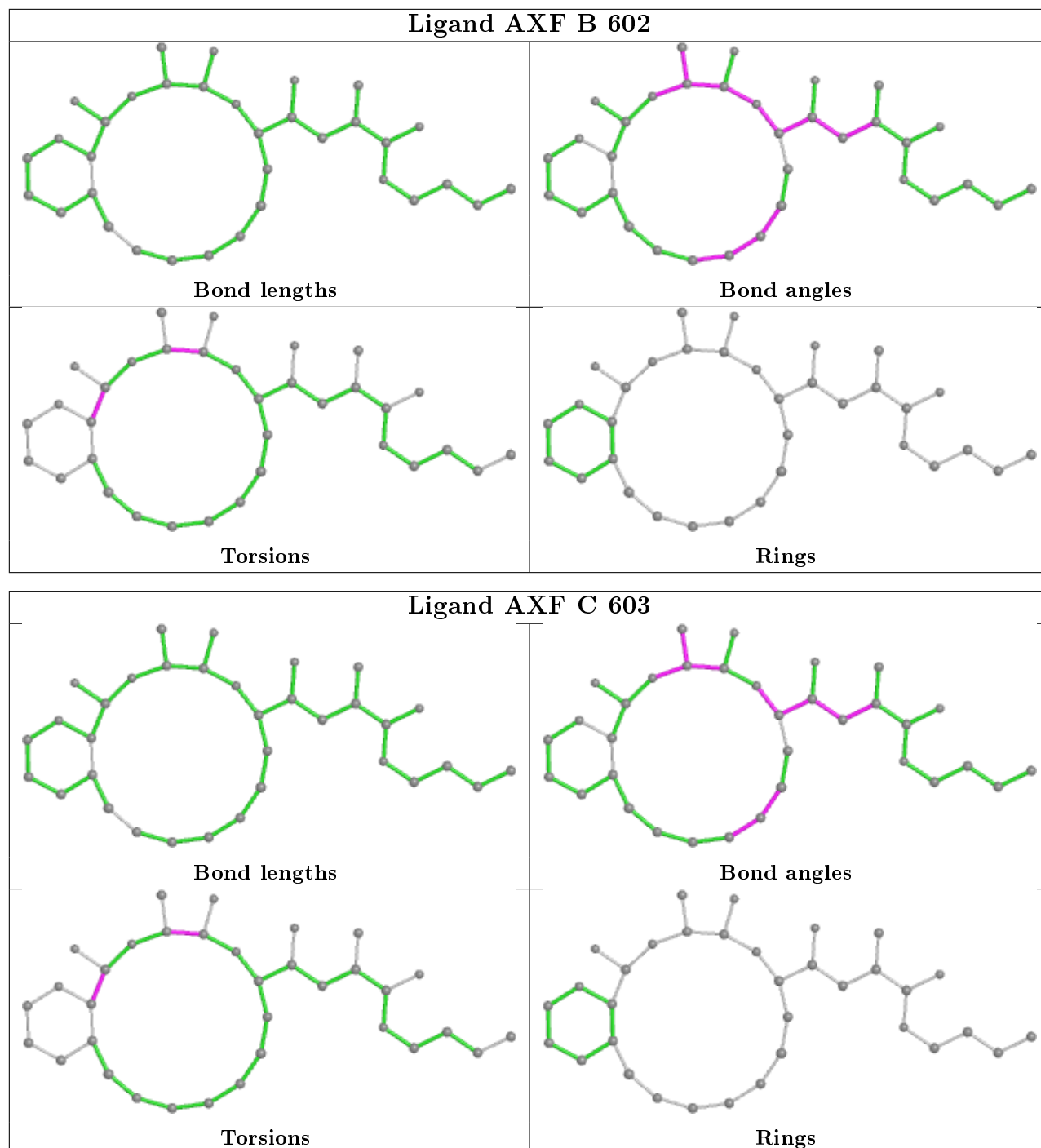
Mol	Chain	Res	Type	Atoms
2	B	602	AXF	C72-C20-C22-N23
2	A	601	AXF	C72-C20-C22-O71
2	C	603	AXF	N18-C20-C22-O71
2	B	602	AXF	N18-C20-C22-O71
2	A	601	AXF	N18-C20-C22-O71
2	A	601	AXF	C22-C20-N18-C17

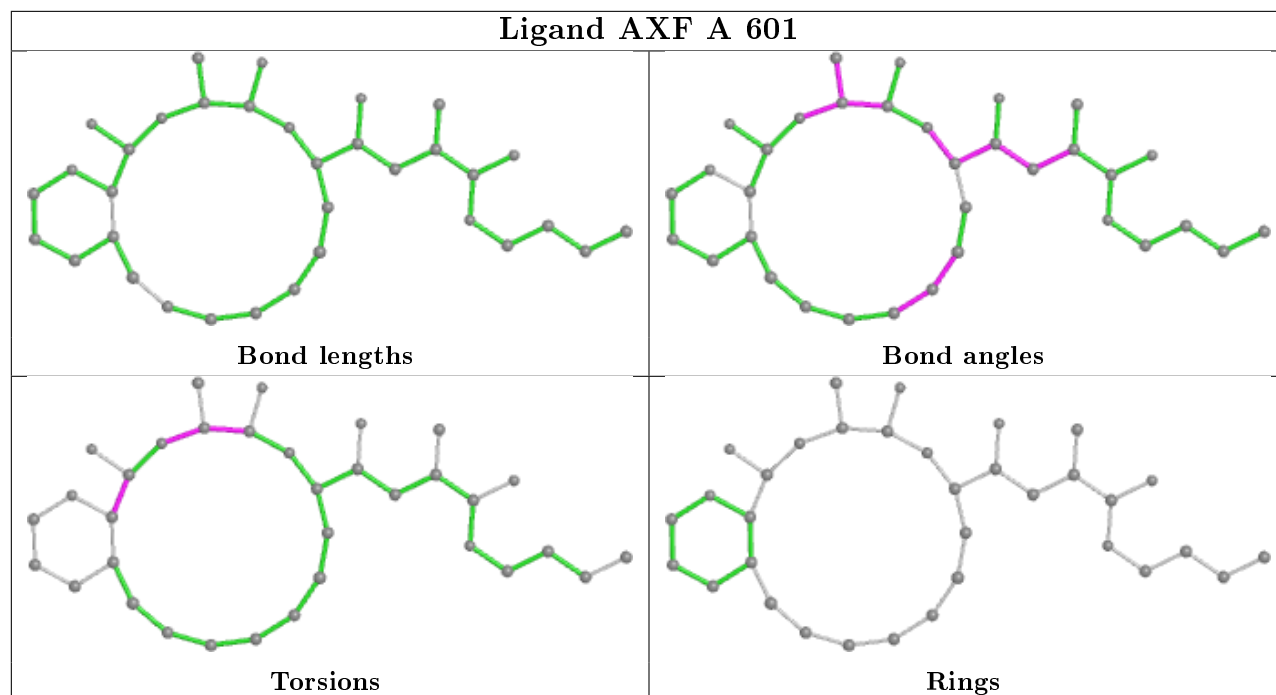
There are no ring outliers.

1 monomer is involved in 1 short contact:

Mol	Chain	Res	Type	Clashes	Symm-Clashes
2	C	603	AXF	1	0

The following is a two-dimensional graphical depiction of Mogul quality analysis of bond lengths, bond angles, torsion angles, and ring geometry for all instances of the Ligand of Interest. In addition, ligands with molecular weight > 250 and outliers as shown on the validation Tables will also be included. For torsion angles, if less than 5% of the Mogul distribution of torsion angles is within 10 degrees of the torsion angle in question, then that torsion angle is considered an outlier. Any bond that is central to one or more torsion angles identified as an outlier by Mogul will be highlighted in the graph. For rings, the root-mean-square deviation (RMSD) between the ring in question and similar rings identified by Mogul is calculated over all ring torsion angles. If the average RMSD is greater than 60 degrees and the minimal RMSD between the ring in question and any Mogul-identified rings is also greater than 60 degrees, then that ring is considered an outlier. The outliers are highlighted in purple. The color gray indicates Mogul did not find sufficient equivalents in the CSD to analyse the geometry.





5.7 Other polymers [i](#)

There are no such residues in this entry.

5.8 Polymer linkage issues [i](#)

There are no chain breaks in this entry.

6 Fit of model and data

6.1 Protein, DNA and RNA chains

In the following table, the column labelled ‘#RSRZ > 2’ contains the number (and percentage) of RSRZ outliers, followed by percent RSRZ outliers for the chain as percentile scores relative to all X-ray entries and entries of similar resolution. The OWAB column contains the minimum, median, 95th percentile and maximum values of the occupancy-weighted average B-factor per residue. The column labelled ‘Q < 0.9’ lists the number of (and percentage) of residues with an average occupancy less than 0.9.

Mol	Chain	Analysed	<RSRZ>	#RSRZ>2	OWAB(Å ²)	Q<0.9
1	A	375/402 (93%)	0.60	26 (6%) 16 22	26, 47, 84, 118	0
1	B	377/402 (93%)	0.84	38 (10%) 7 9	24, 47, 91, 118	0
1	C	377/402 (93%)	0.48	19 (5%) 28 35	27, 45, 85, 116	0
All	All	1129/1206 (93%)	0.64	83 (7%) 14 19	24, 46, 87, 118	0

All (83) RSRZ outliers are listed below:

Mol	Chain	Res	Type	RSRZ
1	B	312	VAL	14.0
1	B	314	THR	12.2
1	C	312	VAL	7.4
1	A	314	THR	7.2
1	B	313	ALA	6.4
1	A	312	VAL	6.2
1	A	313	ALA	6.1
1	B	310	GLU	5.8
1	B	10	SER	5.6
1	B	9	LYS	5.6
1	B	317	ASP	5.5
1	B	315	SER	5.4
1	B	268	VAL	5.3
1	B	170	VAL	5.0
1	A	311	ASP	4.9
1	B	311	ASP	4.8
1	B	253	SER	4.7
1	C	170	VAL	4.2
1	B	169	SER	4.2
1	B	260	GLY	4.0
1	C	310	GLU	4.0
1	B	257	PHE	3.9
1	B	365	PHE	3.9

Continued on next page...

Continued from previous page...

Mol	Chain	Res	Type	RSRZ
1	B	256	LYS	3.9
1	C	365	PHE	3.8
1	A	157	ALA	3.7
1	B	46(P)	SER	3.6
1	B	266	GLN	3.4
1	A	266	GLN	3.4
1	C	256	LYS	3.3
1	C	169	SER	3.3
1	A	315	SER	3.2
1	A	310	GLU	3.2
1	C	314	THR	3.1
1	C	46(P)	SER	3.0
1	B	262	TRP	3.0
1	B	8	GLY	3.0
1	A	49	HIS	2.9
1	B	269	CYS	2.9
1	B	320	TYR	2.9
1	A	257	PHE	2.9
1	A	253	SER	2.8
1	C	309	VAL	2.8
1	A	316	GLN	2.8
1	C	311	ASP	2.8
1	C	49	HIS	2.8
1	A	56	LEU	2.7
1	A	267	LEU	2.7
1	B	264	GLY	2.7
1	A	55	GLN	2.7
1	C	315	SER	2.6
1	B	309	VAL	2.6
1	A	256	LYS	2.6
1	A	254	THR	2.6
1	A	60	TYR	2.6
1	B	316	GLN	2.6
1	C	267	LEU	2.5
1	A	309	VAL	2.5
1	A	21	GLY	2.5
1	B	340	GLY	2.4
1	B	361	VAL	2.4
1	B	258	PRO	2.4
1	B	261	PHE	2.4
1	A	258	PRO	2.4
1	B	272	ALA	2.4

Continued on next page...

Continued from previous page...

Mol	Chain	Res	Type	RSRZ
1	B	271	GLN	2.4
1	B	254	THR	2.3
1	B	12	GLN	2.3
1	A	265	GLU	2.3
1	B	359	CYS	2.2
1	C	86	SER	2.2
1	C	56	LEU	2.2
1	A	23	PRO	2.2
1	B	274	THR	2.2
1	C	272	ALA	2.2
1	A	47	PHE	2.1
1	B	318	ASP	2.1
1	A	12	GLN	2.1
1	A	317	ASP	2.1
1	C	313	ALA	2.1
1	C	12	GLN	2.0
1	C	271	GLN	2.0
1	B	252	SER	2.0

6.2 Non-standard residues in protein, DNA, RNA chains [i](#)

There are no non-standard protein/DNA/RNA residues in this entry.

6.3 Carbohydrates [i](#)

There are no carbohydrates in this entry.

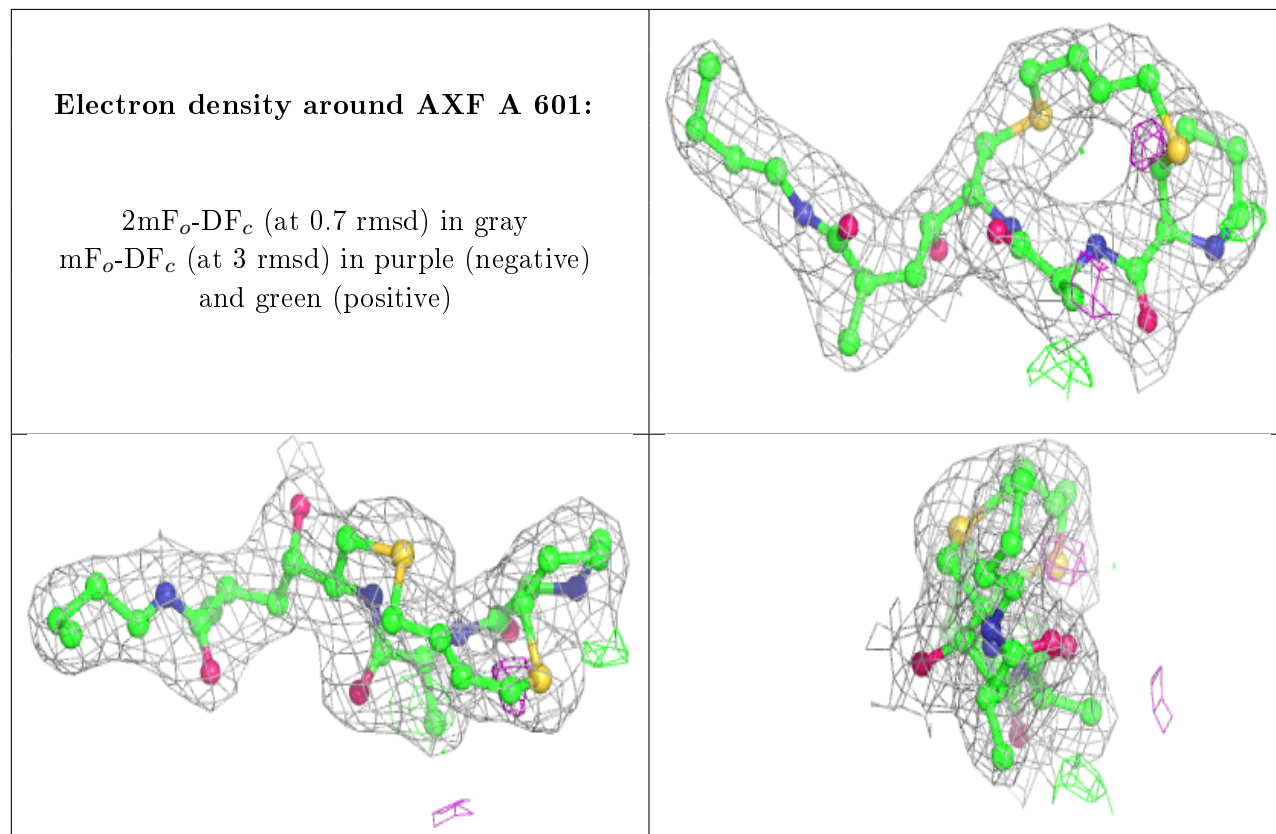
6.4 Ligands [i](#)

In the following table, the Atoms column lists the number of modelled atoms in the group and the number defined in the chemical component dictionary. The B-factors column lists the minimum, median, 95th percentile and maximum values of B factors of atoms in the group. The column labelled 'Q< 0.9' lists the number of atoms with occupancy less than 0.9.

Mol	Type	Chain	Res	Atoms	RSCC	RSR	B-factors(Å ²)	Q<0.9
2	AXF	A	601	34/34	0.94	0.15	33,42,55,57	0
2	AXF	C	603	34/34	0.94	0.17	32,46,59,60	0
2	AXF	B	602	34/34	0.94	0.18	28,49,58,61	0

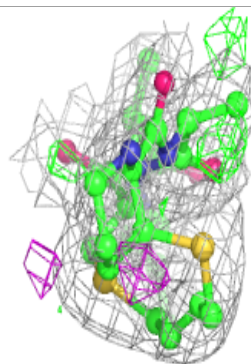
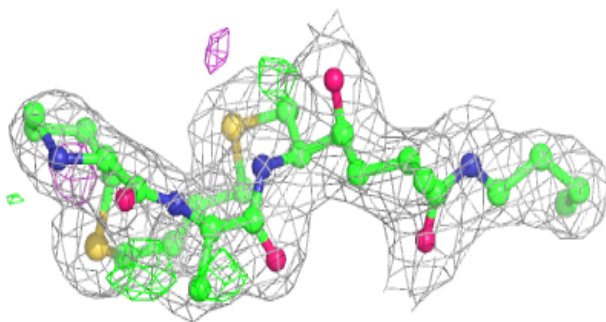
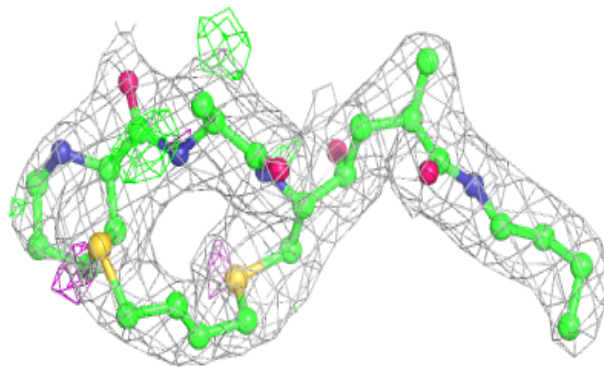
The following is a graphical depiction of the model fit to experimental electron density of all

instances of the Ligand of Interest. In addition, ligands with molecular weight > 250 and outliers as shown on the geometry validation Tables will also be included. Each fit is shown from different orientation to approximate a three-dimensional view.

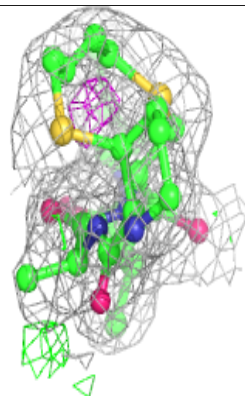
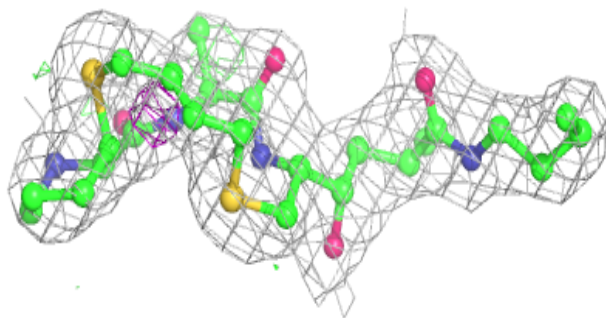
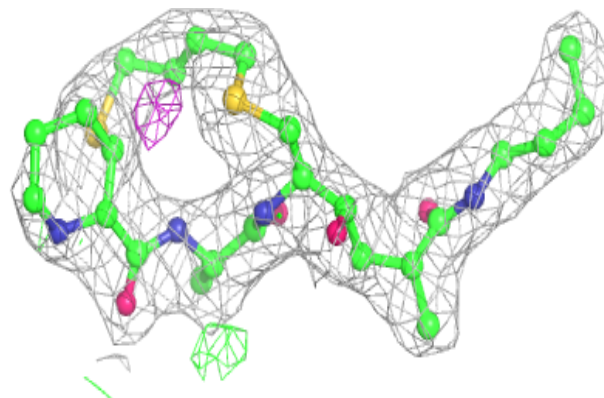


Electron density around AXF C 603:

$2mF_o-DF_c$ (at 0.7 rmsd) in gray
 mF_o-DF_c (at 3 rmsd) in purple (negative)
and green (positive)

**Electron density around AXF B 602:**

$2mF_o-DF_c$ (at 0.7 rmsd) in gray
 mF_o-DF_c (at 3 rmsd) in purple (negative)
and green (positive)



6.5 Other polymers

There are no such residues in this entry.