



Full wwPDB X-ray Structure Validation Report ⓘ

Jan 8, 2024 – 12:07 am GMT

PDB ID : 6ETS
Title : Crystal structure of KDM4D with tetrazolhydrazide compound 1
Authors : Malecki, P.H.; Link, A.; Weiss, M.S.; Heinemann, U.
Deposited on : 2017-10-27
Resolution : 1.33 Å(reported)

This is a Full wwPDB X-ray Structure Validation Report for a publicly released PDB entry.

We welcome your comments at validation@mail.wwpdb.org

A user guide is available at

<https://www.wwpdb.org/validation/2017/XrayValidationReportHelp>

with specific help available everywhere you see the ⓘ symbol.

The types of validation reports are described at

<http://www.wwpdb.org/validation/2017/FAQs#types>.

The following versions of software and data (see [references ⓘ](#)) were used in the production of this report:

MolProbity : 4.02b-467
Mogul : 1.8.4, CSD as541be (2020)
Xtrriage (Phenix) : 1.13
EDS : 2.36
Percentile statistics : 20191225.v01 (using entries in the PDB archive December 25th 2019)
Refmac : 5.8.0158
CCP4 : 7.0.044 (Gargrove)
Ideal geometry (proteins) : Engh & Huber (2001)
Ideal geometry (DNA, RNA) : Parkinson et al. (1996)
Validation Pipeline (wwPDB-VP) : 2.36

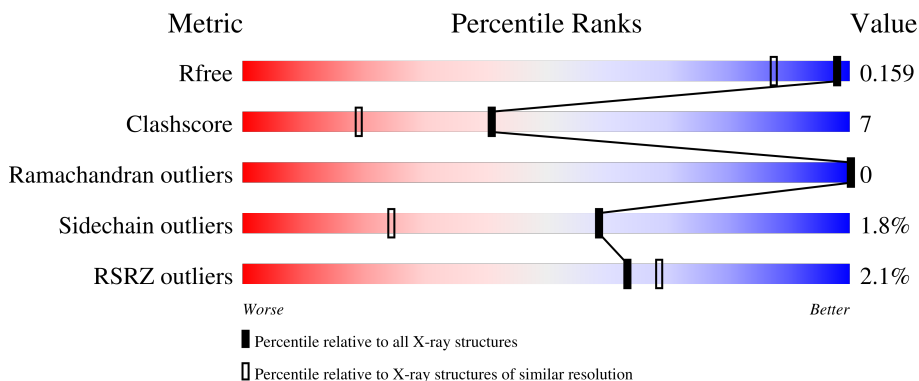
1 Overall quality at a glance

The following experimental techniques were used to determine the structure:

X-RAY DIFFRACTION

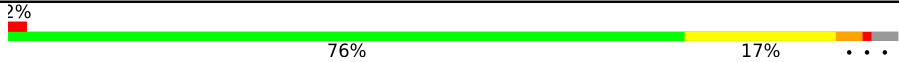
The reported resolution of this entry is 1.33 Å.

Percentile scores (ranging between 0-100) for global validation metrics of the entry are shown in the following graphic. The table shows the number of entries on which the scores are based.



Metric	Whole archive (#Entries)	Similar resolution (#Entries, resolution range(Å))
R_{free}	130704	1385 (1.36-1.32)
Clashscore	141614	1417 (1.36-1.32)
Ramachandran outliers	138981	1397 (1.36-1.32)
Sidechain outliers	138945	1397 (1.36-1.32)
RSRZ outliers	127900	1369 (1.36-1.32)

The table below summarises the geometric issues observed across the polymeric chains and their fit to the electron density. The red, orange, yellow and green segments of the lower bar indicate the fraction of residues that contain outliers for ≥ 3 , 2, 1 and 0 types of geometric quality criteria respectively. A grey segment represents the fraction of residues that are not modelled. The numeric value for each fraction is indicated below the corresponding segment, with a dot representing fractions $\leq 5\%$. The upper red bar (where present) indicates the fraction of residues that have poor fit to the electron density. The numeric value is given above the bar.

Mol	Chain	Length	Quality of chain
1	A	341	

2 Entry composition [i](#)

There are 9 unique types of molecules in this entry. The entry contains 6509 atoms, of which 3011 are hydrogens and 0 are deuteriums.

In the tables below, the ZeroOcc column contains the number of atoms modelled with zero occupancy, the AltConf column contains the number of residues with at least one atom in alternate conformation and the Trace column contains the number of residues modelled with at most 2 atoms.

- Molecule 1 is a protein called Lysine-specific demethylase 4D.

Mol	Chain	Residues	Atoms						ZeroOcc	AltConf	Trace
			Total	C	H	N	O	S			
1	A	330	5907	1918	2950	500	520	19	0	56	0

- Molecule 2 is ZINC ION (three-letter code: ZN) (formula: Zn).

Mol	Chain	Residues	Atoms		ZeroOcc	AltConf
2	A	1	Total	Zn	0	0
			1	1		

- Molecule 3 is NICKEL (II) ION (three-letter code: NI) (formula: Ni).

Mol	Chain	Residues	Atoms		ZeroOcc	AltConf
3	A	1	Total	Ni	0	0
			1	1		

- Molecule 4 is SODIUM ION (three-letter code: NA) (formula: Na).

Mol	Chain	Residues	Atoms		ZeroOcc	AltConf
4	A	1	Total	Na	0	0
			1	1		

- Molecule 5 is 1,2-ETHANEDIOL (three-letter code: EDO) (formula: C₂H₆O₂).



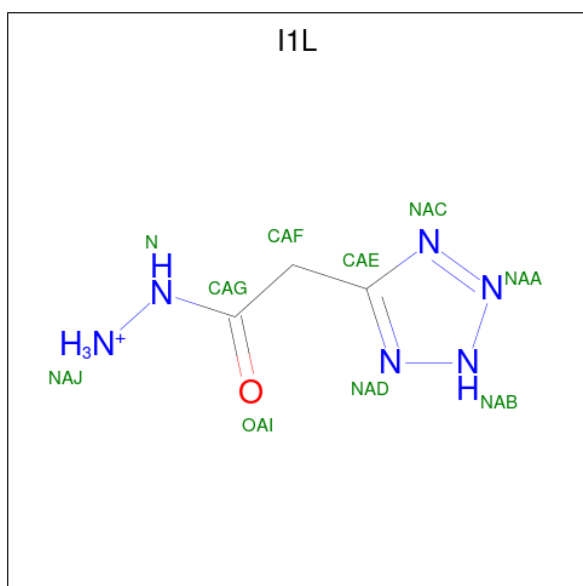
Mol	Chain	Residues	Atoms				ZeroOcc	AltConf
5	A	1	Total	C	H	O	0	0
			10	2	6	2		
5	A	1	Total	C	H	O	0	0
			10	2	6	2		
5	A	1	Total	C	H	O	0	0
			10	2	6	2		
5	A	1	Total	C	H	O	0	0
			10	2	6	2		
5	A	1	Total	C	H	O	0	0
			10	2	6	2		
5	A	1	Total	C	H	O	0	1
			10	2	6	2		
5	A	1	Total	C	H	O	0	0
			10	2	6	2		

- Molecule 6 is SULFATE ION (three-letter code: SO4) (formula: O₄S).



Mol	Chain	Residues	Atoms	ZeroOcc	AltConf
6	A	1	Total O S 5 4 1	0	1
6	A	1	Total O S 5 4 1	0	1
6	A	1	Total O S 5 4 1	0	0

- Molecule 7 is [2-(2 {H}-1,2,3,4-tetrazol-5-yl)ethanoylamino]azanium (three-letter code: I1L) (formula: C₃H₇N₆O).



Mol	Chain	Residues	Atoms					ZeroOcc	AltConf
			Total	C	H	N	O		
7	A	1	17	3	7	6	1	0	1

- Molecule 8 is CHLORIDE ION (three-letter code: CL) (formula: Cl).

Mol	Chain	Residues	Atoms		ZeroOcc	AltConf
			Total	Cl		
8	A	1	1	1	0	0

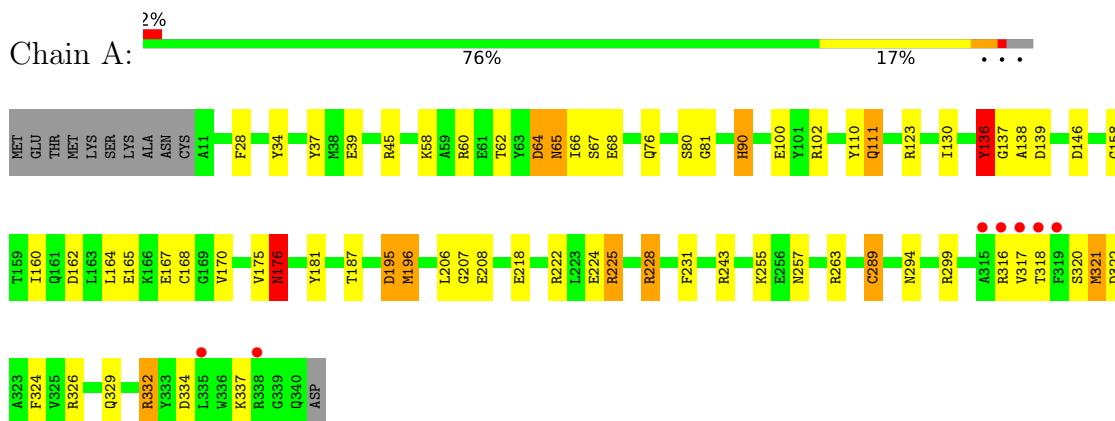
- Molecule 9 is water.

Mol	Chain	Residues	Atoms		ZeroOcc	AltConf
			Total	O		
9	A	459	476	476	0	38

3 Residue-property plots [i](#)

These plots are drawn for all protein, RNA, DNA and oligosaccharide chains in the entry. The first graphic for a chain summarises the proportions of the various outlier classes displayed in the second graphic. The second graphic shows the sequence view annotated by issues in geometry and electron density. Residues are color-coded according to the number of geometric quality criteria for which they contain at least one outlier: green = 0, yellow = 1, orange = 2 and red = 3 or more. A red dot above a residue indicates a poor fit to the electron density ($RSRZ > 2$). Stretches of 2 or more consecutive residues without any outlier are shown as a green connector. Residues present in the sample, but not in the model, are shown in grey.

- Molecule 1: Lysine-specific demethylase 4D



4 Data and refinement statistics

Property	Value	Source
Space group	P 43 21 2	Depositor
Cell constants a, b, c, α , β , γ	71.63Å 71.63Å 150.77Å 90.00° 90.00° 90.00°	Depositor
Resolution (Å)	32.03 – 1.33 48.01 – 1.33	Depositor EDS
% Data completeness (in resolution range)	98.5 (32.03-1.33) 95.4 (48.01-1.33)	Depositor EDS
R_{merge}	0.06	Depositor
R_{sym}	(Not available)	Depositor
$\langle I/\sigma(I) \rangle$ ¹	1.94 (at 1.33Å)	Xtrriage
Refinement program	PHENIX	Depositor
R, R_{free}	0.129 , 0.156 0.130 , 0.159	Depositor DCC
R_{free} test set	1118 reflections (1.25%)	wwPDB-VP
Wilson B-factor (Å ²)	10.7	Xtrriage
Anisotropy	0.020	Xtrriage
Bulk solvent k_{sol} (e/Å ³), B_{sol} (Å ²)	0.41 , 57.8	EDS
L-test for twinning ²	$\langle L \rangle = 0.47$, $\langle L^2 \rangle = 0.30$	Xtrriage
Estimated twinning fraction	No twinning to report.	Xtrriage
F_o, F_c correlation	0.98	EDS
Total number of atoms	6509	wwPDB-VP
Average B, all atoms (Å ²)	18.0	wwPDB-VP

Xtrriage's analysis on translational NCS is as follows: *The largest off-origin peak in the Patterson function is 4.46% of the height of the origin peak. No significant pseudotranslation is detected.*

¹Intensities estimated from amplitudes.

²Theoretical values of $\langle |L| \rangle$, $\langle L^2 \rangle$ for acentric reflections are 0.5, 0.333 respectively for untwinned datasets, and 0.375, 0.2 for perfectly twinned datasets.

5 Model quality [i](#)

5.1 Standard geometry [i](#)

Bond lengths and bond angles in the following residue types are not validated in this section: CL, ZN, NA, NI, I1L, EDO, SO4

The Z score for a bond length (or angle) is the number of standard deviations the observed value is removed from the expected value. A bond length (or angle) with $|Z| > 5$ is considered an outlier worth inspection. RMSZ is the root-mean-square of all Z scores of the bond lengths (or angles).

Mol	Chain	Bond lengths		Bond angles	
		RMSZ	# Z >5	RMSZ	# Z >5
1	A	1.71	47/3228 (1.5%)	1.42	47/4366 (1.1%)

All (47) bond length outliers are listed below:

Mol	Chain	Res	Type	Atoms	Z	Observed(Å)	Ideal(Å)
1	A	65[A]	ASN	CA-C	8.96	1.76	1.52
1	A	65[B]	ASN	CA-C	8.96	1.76	1.52
1	A	218	GLU	CD-OE1	8.43	1.34	1.25
1	A	176[A]	ASN	CA-C	7.79	1.73	1.52
1	A	176[B]	ASN	CA-C	7.79	1.73	1.52
1	A	208	GLU	CD-OE1	-7.23	1.17	1.25
1	A	181	TYR	CE1-CZ	-7.21	1.29	1.38
1	A	289[A]	CYS	CA-C	7.07	1.71	1.52
1	A	289[B]	CYS	CA-C	7.07	1.71	1.52
1	A	68	GLU	CD-OE1	-6.89	1.18	1.25
1	A	90[A]	HIS	N-CA	6.68	1.59	1.46
1	A	90[B]	HIS	N-CA	6.68	1.59	1.46
1	A	165	GLU	CD-OE2	-6.63	1.18	1.25
1	A	58[A]	LYS	CA-C	6.51	1.69	1.52
1	A	58[B]	LYS	CA-C	6.51	1.69	1.52
1	A	39[A]	GLU	CD-OE1	-6.46	1.18	1.25
1	A	39[B]	GLU	CD-OE1	-6.46	1.18	1.25
1	A	80[A]	SER	CB-OG	-6.46	1.33	1.42
1	A	80[B]	SER	CB-OG	-6.46	1.33	1.42
1	A	218	GLU	CG-CD	6.33	1.61	1.51
1	A	294	ASN	CG-ND2	-6.02	1.17	1.32
1	A	167	GLU	CD-OE1	-6.00	1.19	1.25
1	A	136[A]	TYR	CA-C	5.99	1.68	1.52
1	A	136[B]	TYR	CA-C	5.99	1.68	1.52
1	A	67[A]	SER	C-O	-5.95	1.12	1.23
1	A	67[B]	SER	C-O	-5.95	1.12	1.23

Continued on next page...

Continued from previous page...

Mol	Chain	Res	Type	Atoms	Z	Observed(Å)	Ideal(Å)
1	A	81[A]	GLY	C-O	-5.77	1.14	1.23
1	A	81[B]	GLY	C-O	-5.77	1.14	1.23
1	A	225[A]	ARG	CA-C	5.76	1.68	1.52
1	A	225[B]	ARG	CA-C	5.76	1.68	1.52
1	A	231	PHE	C-O	-5.73	1.12	1.23
1	A	228[A]	ARG	N-CA	5.66	1.57	1.46
1	A	228[B]	ARG	N-CA	5.66	1.57	1.46
1	A	168[A]	CYS	C-O	-5.65	1.12	1.23
1	A	168[B]	CYS	C-O	-5.65	1.12	1.23
1	A	136[A]	TYR	N-CA	5.58	1.57	1.46
1	A	136[B]	TYR	N-CA	5.58	1.57	1.46
1	A	137	GLY	C-O	-5.42	1.15	1.23
1	A	45	ARG	C-O	-5.42	1.13	1.23
1	A	164[A]	LEU	N-CA	5.35	1.57	1.46
1	A	164[B]	LEU	N-CA	5.35	1.57	1.46
1	A	224	GLU	CD-OE1	5.16	1.31	1.25
1	A	257	ASN	C-O	-5.16	1.13	1.23
1	A	170	VAL	C-O	-5.09	1.13	1.23
1	A	207[A]	GLY	C-O	-5.05	1.15	1.23
1	A	207[B]	GLY	C-O	-5.05	1.15	1.23
1	A	76	GLN	CG-CD	-5.01	1.39	1.51

All (47) bond angle outliers are listed below:

Mol	Chain	Res	Type	Atoms	Z	Observed(°)	Ideal(°)
1	A	196	MET	CG-SD-CE	9.71	115.73	100.20
1	A	64[A]	ASP	CB-CG-OD2	-8.99	110.21	118.30
1	A	64[B]	ASP	CB-CG-OD2	-8.99	110.21	118.30
1	A	332	ARG	NE-CZ-NH2	-8.65	115.98	120.30
1	A	164[A]	LEU	CB-CG-CD1	-8.51	96.53	111.00
1	A	164[B]	LEU	CB-CG-CD1	-8.51	96.53	111.00
1	A	34	TYR	CB-CG-CD2	7.92	125.75	121.00
1	A	321[A]	MET	CG-SD-CE	7.84	112.74	100.20
1	A	321[B]	MET	CG-SD-CE	7.84	112.74	100.20
1	A	334	ASP	CB-CG-OD1	7.80	125.32	118.30
1	A	162	ASP	CB-CG-OD2	-7.76	111.32	118.30
1	A	222[A]	ARG	NE-CZ-NH2	-7.48	116.56	120.30
1	A	222[B]	ARG	NE-CZ-NH2	-7.48	116.56	120.30
1	A	146[A]	ASP	CB-CG-OD1	7.33	124.89	118.30
1	A	146[B]	ASP	CB-CG-OD1	7.33	124.89	118.30
1	A	102	ARG	NE-CZ-NH2	-6.94	116.83	120.30
1	A	195	ASP	CB-CG-OD2	-6.86	112.12	118.30

Continued on next page...

Continued from previous page...

Mol	Chain	Res	Type	Atoms	Z	Observed(°)	Ideal(°)
1	A	299	ARG	NE-CZ-NH2	-6.86	116.87	120.30
1	A	102	ARG	NE-CZ-NH1	6.79	123.69	120.30
1	A	324[A]	PHE	CB-CG-CD2	-6.75	116.08	120.80
1	A	324[B]	PHE	CB-CG-CD2	-6.75	116.08	120.80
1	A	111[A]	GLN	CG-CD-OE1	-6.55	108.49	121.60
1	A	111[B]	GLN	CG-CD-OE1	-6.55	108.49	121.60
1	A	289[A]	CYS	CA-CB-SG	6.39	125.50	114.00
1	A	289[B]	CYS	CA-CB-SG	6.39	125.50	114.00
1	A	322	ASP	CB-CG-OD2	-6.34	112.59	118.30
1	A	322	ASP	CB-CG-OD1	6.31	123.98	118.30
1	A	139	ASP	CB-CG-OD2	-6.27	112.66	118.30
1	A	100	GLU	OE1-CD-OE2	-5.89	116.23	123.30
1	A	263	ARG	NE-CZ-NH2	5.86	123.23	120.30
1	A	64[A]	ASP	CB-CG-OD1	5.76	123.49	118.30
1	A	64[B]	ASP	CB-CG-OD1	5.76	123.49	118.30
1	A	222[A]	ARG	NH1-CZ-NH2	5.73	125.70	119.40
1	A	222[B]	ARG	NH1-CZ-NH2	5.73	125.70	119.40
1	A	326	ARG	CD-NE-CZ	5.72	131.61	123.60
1	A	324[A]	PHE	CB-CG-CD1	5.68	124.78	120.80
1	A	324[B]	PHE	CB-CG-CD1	5.68	124.78	120.80
1	A	34	TYR	CB-CG-CD1	-5.52	117.69	121.00
1	A	158[A]	GLY	CA-C-O	5.38	130.29	120.60
1	A	158[B]	GLY	CA-C-O	5.38	130.29	120.60
1	A	222[A]	ARG	NE-CZ-NH1	-5.36	117.62	120.30
1	A	222[B]	ARG	NE-CZ-NH1	-5.36	117.62	120.30
1	A	60	ARG	NE-CZ-NH1	5.35	122.98	120.30
1	A	110	TYR	CG-CD2-CE2	5.07	125.35	121.30
1	A	243	ARG	NE-CZ-NH2	-5.04	117.78	120.30
1	A	146[A]	ASP	N-CA-CB	-5.02	101.56	110.60
1	A	146[B]	ASP	N-CA-CB	-5.02	101.56	110.60

There are no chirality outliers.

There are no planarity outliers.

5.2 Too-close contacts

In the following table, the Non-H and H(model) columns list the number of non-hydrogen atoms and hydrogen atoms in the chain respectively. The H(added) column lists the number of hydrogen atoms added and optimized by MolProbity. The Clashes column lists the number of clashes within the asymmetric unit, whereas Symm-Clashes lists symmetry-related clashes.

Mol	Chain	Non-H	H(model)	H(added)	Clashes	Symm-Clashes
1	A	2957	2950	2885	42	0
2	A	1	0	0	0	0
3	A	1	0	0	0	0
4	A	1	0	0	0	0
5	A	36	54	51	3	0
6	A	15	0	0	1	0
7	A	10	7	0	0	0
8	A	1	0	0	0	0
9	A	476	0	0	10	0
All	All	3498	3011	2936	43	0

The all-atom clashscore is defined as the number of clashes found per 1000 atoms (including hydrogen atoms). The all-atom clashscore for this structure is 7.

All (43) close contacts within the same asymmetric unit are listed below, sorted by their clash magnitude.

Atom-1	Atom-2	Interatomic distance (Å)	Clash overlap (Å)
1:A:225[A]:ARG:HG2	1:A:228[A]:ARG:NH2	1.72	1.03
1:A:225[A]:ARG:HG2	1:A:228[A]:ARG:HH22	1.25	0.96
1:A:62[B]:THR:HG23	6:A:413[B]:SO4:O1	1.74	0.87
1:A:136[A]:TYR:CD1	1:A:187[A]:THR:HG21	2.15	0.81
1:A:136[A]:TYR:CE1	1:A:187[A]:THR:HG21	2.18	0.78
1:A:136[B]:TYR:HB3	1:A:187[B]:THR:HG21	1.67	0.76
1:A:321[B]:MET:HE1	9:A:841:HOH:O	1.86	0.76
1:A:176[B]:ASN:HB3	9:A:608:HOH:O	1.84	0.75
5:A:409:EDO:H22	9:A:603:HOH:O	1.89	0.72
1:A:255[A]:LYS:HD3	9:A:544[A]:HOH:O	1.88	0.72
1:A:65[A]:ASN:CA	1:A:66:ILE:N	2.54	0.70
1:A:65[B]:ASN:CA	1:A:66:ILE:N	2.54	0.70
1:A:320:SER:HB3	9:A:810:HOH:O	1.92	0.69
1:A:160[B]:ILE:HG12	9:A:558[B]:HOH:O	1.95	0.66
1:A:90[B]:HIS:HE1	9:A:520:HOH:O	1.80	0.64
1:A:195:ASP:HB3	1:A:321[B]:MET:SD	2.38	0.64
1:A:136[B]:TYR:HB3	1:A:187[B]:THR:CG2	2.29	0.62
1:A:176[A]:ASN:HB3	9:A:530:HOH:O	1.99	0.62
1:A:317:VAL:HG11	1:A:321[A]:MET:SD	2.43	0.58
1:A:130:ILE:HG12	9:A:746[C]:HOH:O	2.03	0.57
1:A:196:MET:HG2	1:A:321[B]:MET:SD	2.46	0.56
1:A:64[B]:ASP:OD2	1:A:65[B]:ASN:ND2	2.39	0.56
1:A:64[B]:ASP:OD1	1:A:65[B]:ASN:OD1	2.24	0.55
1:A:317:VAL:CG1	1:A:318:THR:N	2.69	0.55
1:A:317:VAL:HG13	1:A:318:THR:HG22	1.88	0.54

Continued on next page...

Continued from previous page...

Atom-1	Atom-2	Interatomic distance (Å)	Clash overlap (Å)
1:A:136[B]:TYR:CE2	1:A:138:ALA:HB2	2.46	0.51
1:A:329[B]:GLN:OE1	1:A:332:ARG:HD2	2.13	0.48
1:A:136[A]:TYR:CG	1:A:187[A]:THR:CG2	2.96	0.48
1:A:136[A]:TYR:CD2	1:A:187[A]:THR:CG2	2.97	0.48
1:A:317:VAL:HG13	1:A:318:THR:H	1.79	0.48
1:A:136[A]:TYR:CD1	1:A:187[A]:THR:CG2	2.94	0.48
1:A:111[A]:GLN:HG2	9:A:592:HOH:O	2.14	0.47
1:A:136[A]:TYR:CZ	1:A:187[A]:THR:HG21	2.50	0.45
1:A:175:VAL:O	1:A:176[B]:ASN:CG	2.55	0.44
1:A:206[B]:LEU:HG	1:A:289[B]:CYS:HB3	2.00	0.44
1:A:136[A]:TYR:CG	1:A:187[A]:THR:HG23	2.53	0.44
1:A:136[A]:TYR:CD2	1:A:187[A]:THR:HG23	2.53	0.43
1:A:317:VAL:HG13	1:A:318:THR:N	2.35	0.42
1:A:123[B]:ARG:HG2	5:A:409:EDO:O2	2.20	0.41
1:A:37:TYR:CG	5:A:412:EDO:H21	2.55	0.40

There are no symmetry-related clashes.

5.3 Torsion angles [i](#)

5.3.1 Protein backbone [i](#)

In the following table, the Percentiles column shows the percent Ramachandran outliers of the chain as a percentile score with respect to all X-ray entries followed by that with respect to entries of similar resolution.

The Analysed column shows the number of residues for which the backbone conformation was analysed, and the total number of residues.

Mol	Chain	Analysed	Favoured	Allowed	Outliers	Percentiles
1	A	384/341 (113%)	381 (99%)	3 (1%)	0	100 100

There are no Ramachandran outliers to report.

5.3.2 Protein sidechains [i](#)

In the following table, the Percentiles column shows the percent sidechain outliers of the chain as a percentile score with respect to all X-ray entries followed by that with respect to entries of similar resolution.

The Analysed column shows the number of residues for which the sidechain conformation was

analysed, and the total number of residues.

Mol	Chain	Analysed	Rotameric	Outliers	Percentiles
1	A	333/291 (114%)	326 (98%)	7 (2%)	53 18

All (7) residues with a non-rotameric sidechain are listed below:

Mol	Chain	Res	Type
1	A	28	PHE
1	A	136[A]	TYR
1	A	136[B]	TYR
1	A	176[A]	ASN
1	A	176[B]	ASN
1	A	316	ARG
1	A	337	LYS

Sometimes sidechains can be flipped to improve hydrogen bonding and reduce clashes. There are no such sidechains identified.

5.3.3 RNA [i](#)

There are no RNA molecules in this entry.

5.4 Non-standard residues in protein, DNA, RNA chains [i](#)

There are no non-standard protein/DNA/RNA residues in this entry.

5.5 Carbohydrates [i](#)

There are no monosaccharides in this entry.

5.6 Ligand geometry [i](#)

Of 17 ligands modelled in this entry, 4 are monoatomic - leaving 13 for Mogul analysis.

In the following table, the Counts columns list the number of bonds (or angles) for which Mogul statistics could be retrieved, the number of bonds (or angles) that are observed in the model and the number of bonds (or angles) that are defined in the Chemical Component Dictionary. The Link column lists molecule types, if any, to which the group is linked. The Z score for a bond length (or angle) is the number of standard deviations the observed value is removed from the expected value. A bond length (or angle) with $|Z| > 2$ is considered an outlier worth inspection. RMSZ is the root-mean-square of all Z scores of the bond lengths (or angles).

Mol	Type	Chain	Res	Link	Bond lengths			Bond angles		
					Counts	RMSZ	# Z > 2	Counts	RMSZ	# Z > 2
5	EDO	A	404	-	3,3,3	0.63	0	2,2,2	0.99	0
5	EDO	A	408	-	3,3,3	0.31	0	2,2,2	0.53	0
5	EDO	A	409	-	3,3,3	0.45	0	2,2,2	0.31	0
6	SO4	A	414[A]	-	4,4,4	0.32	0	6,6,6	0.05	0
5	EDO	A	410	-	3,3,3	1.01	0	2,2,2	1.00	0
6	SO4	A	413[B]	-	4,4,4	0.33	0	6,6,6	0.05	0
5	EDO	A	406	-	3,3,3	0.31	0	2,2,2	0.09	0
7	I1L	A	416[A]	3	10,10,10	3.38	4 (40%)	7,12,12	1.68	3 (42%)
5	EDO	A	407	-	3,3,3	0.38	0	2,2,2	0.94	0
5	EDO	A	411[A]	-	3,3,3	0.54	0	2,2,2	0.76	0
6	SO4	A	415	-	4,4,4	0.32	0	6,6,6	0.05	0
5	EDO	A	405	-	3,3,3	0.70	0	2,2,2	0.24	0
5	EDO	A	412	-	3,3,3	0.46	0	2,2,2	0.42	0

In the following table, the Chirals column lists the number of chiral outliers, the number of chiral centers analysed, the number of these observed in the model and the number defined in the Chemical Component Dictionary. Similar counts are reported in the Torsion and Rings columns. '-' means no outliers of that kind were identified.

Mol	Type	Chain	Res	Link	Chirals	Torsions	Rings
5	EDO	A	404	-	-	1/1/1/1	-
5	EDO	A	408	-	-	0/1/1/1	-
5	EDO	A	409	-	-	1/1/1/1	-
5	EDO	A	410	-	-	1/1/1/1	-
5	EDO	A	406	-	-	0/1/1/1	-
7	I1L	A	416[A]	3	-	1/6/6/6	0/1/1/1
5	EDO	A	407	-	-	1/1/1/1	-
5	EDO	A	411[A]	-	-	0/1/1/1	-
5	EDO	A	405	-	-	0/1/1/1	-
5	EDO	A	412	-	-	1/1/1/1	-

All (4) bond length outliers are listed below:

Mol	Chain	Res	Type	Atoms	Z	Observed(Å)	Ideal(Å)
7	A	416[A]	I1L	CAE-NAD	-6.80	1.27	1.33
7	A	416[A]	I1L	NAJ-N	-6.13	1.32	1.41
7	A	416[A]	I1L	NAC-NAA	-3.60	1.29	1.34
7	A	416[A]	I1L	NAA-NAB	-2.62	1.27	1.32

All (3) bond angle outliers are listed below:

Mol	Chain	Res	Type	Atoms	Z	Observed(°)	Ideal(°)
7	A	416[A]	I1L	CAG-N-NAJ	-2.43	117.05	122.08
7	A	416[A]	I1L	NAD-NAB-NAA	-2.32	108.02	109.53
7	A	416[A]	I1L	CAE-NAD-NAB	2.17	106.52	104.33

There are no chirality outliers.

All (6) torsion outliers are listed below:

Mol	Chain	Res	Type	Atoms
5	A	410	EDO	O1-C1-C2-O2
5	A	404	EDO	O1-C1-C2-O2
5	A	407	EDO	O1-C1-C2-O2
5	A	412	EDO	O1-C1-C2-O2
7	A	416[A]	I1L	NAC-CAE-CAF-CAG
5	A	409	EDO	O1-C1-C2-O2

There are no ring outliers.

3 monomers are involved in 4 short contacts:

Mol	Chain	Res	Type	Clashes	Symm-Clashes
5	A	409	EDO	2	0
6	A	413[B]	SO4	1	0
5	A	412	EDO	1	0

5.7 Other polymers [i](#)

There are no such residues in this entry.

5.8 Polymer linkage issues [i](#)

There are no chain breaks in this entry.

6 Fit of model and data [i](#)

6.1 Protein, DNA and RNA chains [i](#)

In the following table, the column labelled '#RSRZ > 2' contains the number (and percentage) of RSRZ outliers, followed by percent RSRZ outliers for the chain as percentile scores relative to all X-ray entries and entries of similar resolution. The OWAB column contains the minimum, median, 95th percentile and maximum values of the occupancy-weighted average B-factor per residue. The column labelled 'Q < 0.9' lists the number of (and percentage) of residues with an average occupancy less than 0.9.

Mol	Chain	Analysed	<RSRZ>	#RSRZ>2	OWAB(Å ²)	Q<0.9
1	A	330/341 (96%)	-0.39	7 (2%) 63 68	8, 13, 28, 69	0

All (7) RSRZ outliers are listed below:

Mol	Chain	Res	Type	RSRZ
1	A	319	PHE	7.4
1	A	316	ARG	6.1
1	A	315	ALA	5.1
1	A	318	THR	4.3
1	A	317	VAL	3.8
1	A	338	ARG	2.5
1	A	335	LEU	2.4

6.2 Non-standard residues in protein, DNA, RNA chains [i](#)

There are no non-standard protein/DNA/RNA residues in this entry.

6.3 Carbohydrates [i](#)

There are no monosaccharides in this entry.

6.4 Ligands [i](#)

In the following table, the Atoms column lists the number of modelled atoms in the group and the number defined in the chemical component dictionary. The B-factors column lists the minimum, median, 95th percentile and maximum values of B factors of atoms in the group. The column labelled 'Q < 0.9' lists the number of atoms with occupancy less than 0.9.

Mol	Type	Chain	Res	Atoms	RSCC	RSR	B-factors(Å ²)	Q<0.9
5	EDO	A	409	4/4	0.79	0.15	48,57,58,59	0

Continued on next page...

Continued from previous page...

Mol	Type	Chain	Res	Atoms	RSCC	RSR	B-factors(Å ²)	Q<0.9
5	EDO	A	407	4/4	0.86	0.11	41,49,50,51	0
4	NA	A	403	1/1	0.89	0.20	41,41,41,41	1
5	EDO	A	412	4/4	0.89	0.09	43,51,53,56	0
5	EDO	A	406	4/4	0.90	0.10	31,37,41,43	0
5	EDO	A	410	4/4	0.90	0.13	37,45,48,50	0
5	EDO	A	404	4/4	0.90	0.11	38,46,47,47	0
6	SO4	A	413[B]	5/5	0.91	0.10	21,23,23,24	5
5	EDO	A	411[A]	4/4	0.93	0.12	19,23,24,27	10
5	EDO	A	408	4/4	0.94	0.21	23,28,33,33	0
6	SO4	A	414[A]	5/5	0.96	0.12	17,17,18,18	5
5	EDO	A	405	4/4	0.97	0.06	16,20,23,23	0
6	SO4	A	415	5/5	0.97	0.13	31,32,33,33	5
7	I1L	A	416[A]	10/10	0.97	0.06	10,13,16,19	17
8	CL	A	417	1/1	0.99	0.04	27,27,27,27	0
3	NI	A	402	1/1	1.00	0.03	11,11,11,11	0
2	ZN	A	401	1/1	1.00	0.04	17,17,17,17	0

6.5 Other polymers [i](#)

There are no such residues in this entry.