



## Full wwPDB EM Validation Report ⓘ

Nov 22, 2022 – 05:46 PM JST

PDB ID : 7EPZ  
EMDB ID : EMD-31251  
Title : Overall structure of Erastin-bound xCT-4F2hc complex  
Authors : Yan, R.H.; Li, Y.N.; Zhang, Y.Y.; Chi, X.M.; Zhou, Q.  
Deposited on : 2021-04-28  
Resolution : 3.40 Å (reported)

This is a Full wwPDB EM Validation Report for a publicly released PDB entry.

We welcome your comments at [validation@mail.wwpdb.org](mailto:validation@mail.wwpdb.org)

A user guide is available at

<https://www.wwpdb.org/validation/2017/EMValidationReportHelp>

with specific help available everywhere you see the ⓘ symbol.

The types of validation reports are described at

<http://www.wwpdb.org/validation/2017/FAQs#types>.

---

The following versions of software and data (see [references ⓘ](#)) were used in the production of this report:

EMDB validation analysis : 0.0.1.dev43  
Mogul : 1.8.5 (274361), CSD as541be (2020)  
MolProbity : 4.02b-467  
buster-report : 1.1.7 (2018)  
Percentile statistics : 20191225.v01 (using entries in the PDB archive December 25th 2019)  
MapQ : 1.9.9  
Ideal geometry (proteins) : Engh & Huber (2001)  
Ideal geometry (DNA, RNA) : Parkinson et al. (1996)  
Validation Pipeline (wwPDB-VP) : 2.31.3

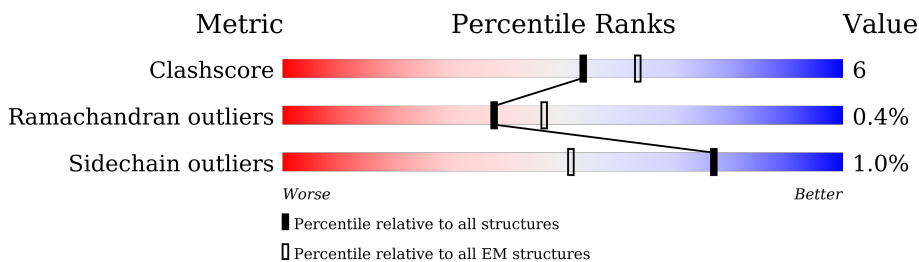
# 1 Overall quality at a glance i

The following experimental techniques were used to determine the structure:

*ELECTRON MICROSCOPY*

The reported resolution of this entry is 3.40 Å.

Percentile scores (ranging between 0-100) for global validation metrics of the entry are shown in the following graphic. The table shows the number of entries on which the scores are based.



Metric	Whole archive (#Entries)	EM structures (#Entries)
Clashscore	158937	4297
Ramachandran outliers	154571	4023
Sidechain outliers	154315	3826

The table below summarises the geometric issues observed across the polymeric chains and their fit to the map. The red, orange, yellow and green segments of the bar indicate the fraction of residues that contain outliers for  $\geq 3$ , 2, 1 and 0 types of geometric quality criteria respectively. A grey segment represents the fraction of residues that are not modelled. The numeric value for each fraction is indicated below the corresponding segment, with a dot representing fractions  $\leq 5\%$ . The upper red bar (where present) indicates the fraction of residues that have poor fit to the EM map (all-atom inclusion  $< 40\%$ ). The numeric value is given above the bar.

Mol	Chain	Length	Quality of chain
1	A	647	
2	B	521	
3	C	2	
3	D	2	
3	E	2	
3	F	2	

## 2 Entry composition i

There are 5 unique types of molecules in this entry. The entry contains 7431 atoms, of which 0 are hydrogens and 0 are deuteriums.

In the tables below, the AltConf column contains the number of residues with at least one atom in alternate conformation and the Trace column contains the number of residues modelled with at most 2 atoms.

- Molecule 1 is a protein called 4F2 cell-surface antigen heavy chain.

Mol	Chain	Residues	Atoms					AltConf	Trace
			Total	C	N	O	S		
1	A	468	3643	2329	625	682	7	0	0

There are 17 discrepancies between the modelled and reference sequences:

Chain	Residue	Modelled	Actual	Comment	Reference
A	-13	MET	-	initiating methionine	UNP J3KPF3
A	-12	ALA	-	expression tag	UNP J3KPF3
A	-11	HIS	-	expression tag	UNP J3KPF3
A	-10	HIS	-	expression tag	UNP J3KPF3
A	-9	HIS	-	expression tag	UNP J3KPF3
A	-8	HIS	-	expression tag	UNP J3KPF3
A	-7	HIS	-	expression tag	UNP J3KPF3
A	-6	HIS	-	expression tag	UNP J3KPF3
A	-5	HIS	-	expression tag	UNP J3KPF3
A	-4	HIS	-	expression tag	UNP J3KPF3
A	-3	HIS	-	expression tag	UNP J3KPF3
A	-2	HIS	-	expression tag	UNP J3KPF3
A	-1	SER	-	expression tag	UNP J3KPF3
A	0	GLY	-	expression tag	UNP J3KPF3
A	1	ARG	-	expression tag	UNP J3KPF3
A	632	LEU	-	expression tag	UNP J3KPF3
A	633	GLU	-	expression tag	UNP J3KPF3

- Molecule 2 is a protein called Cystine/glutamate transporter.

Mol	Chain	Residues	Atoms					AltConf	Trace
			Total	C	N	O	S		
2	B	453	3541	2366	555	600	20	0	0

There are 21 discrepancies between the modelled and reference sequences:

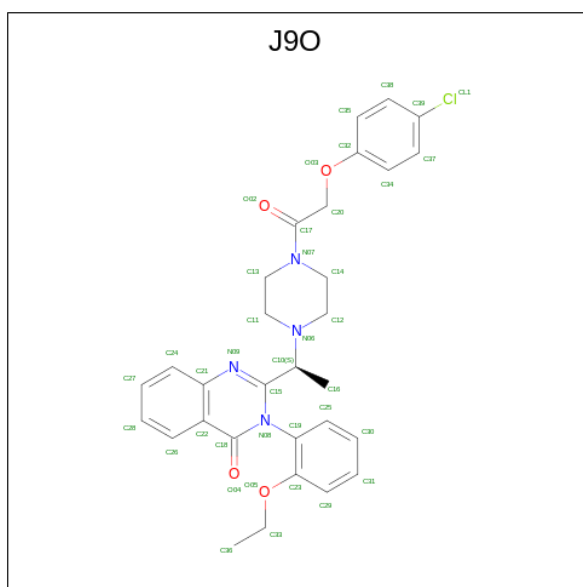
Chain	Residue	Modelled	Actual	Comment	Reference
B	-19	MET	-	initiating methionine	UNP Q9UPY5
B	-18	ALA	-	expression tag	UNP Q9UPY5
B	-17	ASP	-	expression tag	UNP Q9UPY5
B	-16	TYR	-	expression tag	UNP Q9UPY5
B	-15	LYS	-	expression tag	UNP Q9UPY5
B	-14	ASP	-	expression tag	UNP Q9UPY5
B	-13	ASP	-	expression tag	UNP Q9UPY5
B	-12	ASP	-	expression tag	UNP Q9UPY5
B	-11	ASP	-	expression tag	UNP Q9UPY5
B	-10	LYS	-	expression tag	UNP Q9UPY5
B	-9	SER	-	expression tag	UNP Q9UPY5
B	-8	GLY	-	expression tag	UNP Q9UPY5
B	-7	PRO	-	expression tag	UNP Q9UPY5
B	-6	ASP	-	expression tag	UNP Q9UPY5
B	-5	GLU	-	expression tag	UNP Q9UPY5
B	-4	VAL	-	expression tag	UNP Q9UPY5
B	-3	ASP	-	expression tag	UNP Q9UPY5
B	-2	ALA	-	expression tag	UNP Q9UPY5
B	-1	SER	-	expression tag	UNP Q9UPY5
B	0	GLY	-	expression tag	UNP Q9UPY5
B	1	ARG	-	expression tag	UNP Q9UPY5

- Molecule 3 is an oligosaccharide called 2-acetamido-2-deoxy-beta-D-glucopyranose-(1-4)-2-acetamido-2-deoxy-beta-D-glucopyranose.



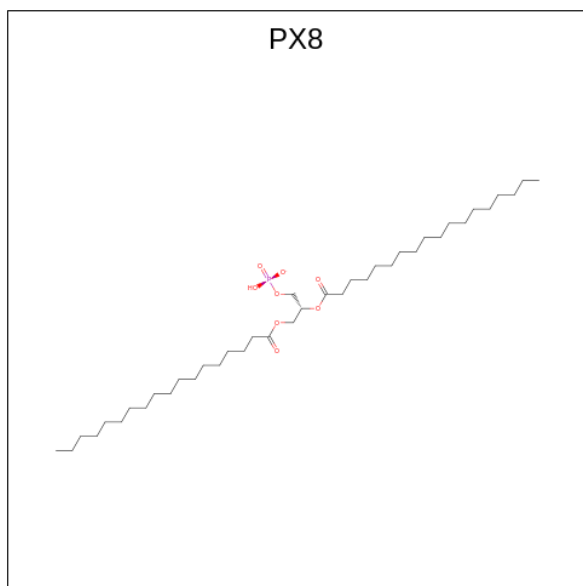
Mol	Chain	Residues	Atoms			AltConf	Trace	
3	C	2	Total	C	N	O	0	0
			28	16	2	10		
3	D	2	Total	C	N	O	0	0
			28	16	2	10		
3	E	2	Total	C	N	O	0	0
			28	16	2	10		
3	F	2	Total	C	N	O	0	0
			28	16	2	10		

- Molecule 4 is 2-[(1S)-1-[4-[2-(4-chloranylphenoxy)ethanoyl]piperazin-1-yl]ethyl]-3-(2-ethoxyphenyl)quinazolin-4-one (three-letter code: J9O) (formula: C<sub>30</sub>H<sub>31</sub>ClN<sub>4</sub>O<sub>4</sub>) (labeled as "Ligand of Interest" by depositor).



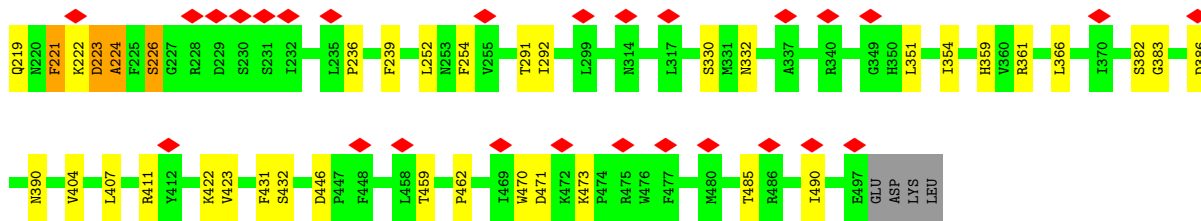
Mol	Chain	Residues	Atoms				AltConf	
			Total	C	Cl	N		O
4	B	1	39	30	1	4	4	0

- Molecule 5 is 1,2-DISTEAROYL-SN-GLYCERO-3-PHOSPHATE (three-letter code: PX8) (formula:  $C_{39}H_{76}O_8P$ ) (labeled as "Ligand of Interest" by depositor).



Mol	Chain	Residues	Atoms				AltConf
			Total	C	O	P	
5	B	1	96	78	16	2	0
5	B	1	96	78	16	2	0





- Molecule 3: 2-acetamido-2-deoxy-beta-D-glucopyranose-(1-4)-2-acetamido-2-deoxy-beta-D-glucopyranose



- Molecule 3: 2-acetamido-2-deoxy-beta-D-glucopyranose-(1-4)-2-acetamido-2-deoxy-beta-D-glucopyranose



- Molecule 3: 2-acetamido-2-deoxy-beta-D-glucopyranose-(1-4)-2-acetamido-2-deoxy-beta-D-glucopyranose



- Molecule 3: 2-acetamido-2-deoxy-beta-D-glucopyranose-(1-4)-2-acetamido-2-deoxy-beta-D-glucopyranose



## 4 Experimental information

Property	Value	Source
EM reconstruction method	SINGLE PARTICLE	Depositor
Imposed symmetry	POINT, Not provided	
Number of particles used	114524	Depositor
Resolution determination method	FSC 0.143 CUT-OFF	Depositor
CTF correction method	PHASE FLIPPING AND AMPLITUDE CORRECTION	Depositor
Microscope	FEI TITAN KRIOS	Depositor
Voltage (kV)	300	Depositor
Electron dose ( $e^-/\text{\AA}^2$ )	50	Depositor
Minimum defocus (nm)	1200	Depositor
Maximum defocus (nm)	2200	Depositor
Magnification	Not provided	
Image detector	GATAN K3 BIOQUANTUM (6k x 4k)	Depositor
Maximum map value	0.150	Depositor
Minimum map value	-0.089	Depositor
Average map value	-0.000	Depositor
Map value standard deviation	0.004	Depositor
Recommended contour level	0.03	Depositor
Map size (Å)	278.272, 278.272, 278.272	wwPDB
Map dimensions	256, 256, 256	wwPDB
Map angles (°)	90.0, 90.0, 90.0	wwPDB
Pixel spacing (Å)	1.087, 1.087, 1.087	Depositor



## 5 Model quality

### 5.1 Standard geometry

Bond lengths and bond angles in the following residue types are not validated in this section: NAG, J9O, PX8

The Z score for a bond length (or angle) is the number of standard deviations the observed value is removed from the expected value. A bond length (or angle) with  $|Z| > 5$  is considered an outlier worth inspection. RMSZ is the root-mean-square of all Z scores of the bond lengths (or angles).

Mol	Chain	Bond lengths		Bond angles	
		RMSZ	# Z  >5	RMSZ	# Z  >5
1	A	0.38	0/3727	0.53	0/5058
2	B	0.39	0/3634	0.63	0/4953
All	All	0.38	0/7361	0.58	0/10011

There are no bond length outliers.

There are no bond angle outliers.

There are no chirality outliers.

There are no planarity outliers.

### 5.2 Too-close contacts

In the following table, the Non-H and H(model) columns list the number of non-hydrogen atoms and hydrogen atoms in the chain respectively. The H(added) column lists the number of hydrogen atoms added and optimized by MolProbity. The Clashes column lists the number of clashes within the asymmetric unit, whereas Symm-Clashes lists symmetry-related clashes.

Mol	Chain	Non-H	H(model)	H(added)	Clashes	Symm-Clashes
1	A	3643	0	3630	34	0
2	B	3541	0	3691	46	0
3	C	28	0	25	0	0
3	D	28	0	25	0	0
3	E	28	0	25	0	0
3	F	28	0	25	0	0
4	B	39	0	0	7	0
5	B	96	0	152	4	0
All	All	7431	0	7573	83	0

The all-atom clashscore is defined as the number of clashes found per 1000 atoms (including hydrogen atoms). The all-atom clashscore for this structure is 6.

All (83) close contacts within the same asymmetric unit are listed below, sorted by their clash magnitude.

Atom-1	Atom-2	Interatomic distance (Å)	Clash overlap (Å)
2:B:219:GLN:HG3	2:B:221:PHE:CE1	1.99	0.98
2:B:219:GLN:HG3	2:B:221:PHE:HE1	1.42	0.85
2:B:52:ILE:CD1	4:B:601:J9O:C31	2.70	0.69
2:B:52:ILE:HD11	4:B:601:J9O:C29	2.23	0.69
2:B:75:SER:HB3	2:B:226:SER:O	1.93	0.69
5:B:602:PX8:H50	5:B:602:PX8:H11	1.82	0.62
1:A:183:ARG:NH1	2:B:490:ILE:O	2.34	0.61
1:A:572:ASP:HA	1:A:619:PRO:HB3	1.83	0.60
2:B:219:GLN:HA	2:B:221:PHE:HE1	1.67	0.59
1:A:437:SER:OG	1:A:438:GLN:N	2.36	0.58
1:A:400:LEU:HD22	1:A:433:SER:HB3	1.85	0.58
1:A:166:SER:OG	1:A:167:LYS:N	2.37	0.57
1:A:610:LEU:HD23	1:A:614:ARG:HH12	1.70	0.57
2:B:221:PHE:CD1	2:B:221:PHE:N	2.73	0.57
2:B:359:HIS:ND1	2:B:361:ARG:O	2.38	0.57
1:A:509:THR:HG23	1:A:512:GLY:H	1.70	0.57
2:B:56:THR:HG21	2:B:252:LEU:HD21	1.87	0.56
2:B:291:THR:HG23	2:B:292:ILE:HG13	1.86	0.56
2:B:219:GLN:HA	2:B:221:PHE:CE1	2.39	0.56
2:B:354:ILE:HB	2:B:485:THR:HG23	1.87	0.56
2:B:471:ASP:OD1	2:B:471:ASP:N	2.40	0.55
1:A:516:ASP:HB3	1:A:519:SER:HB2	1.88	0.55
2:B:142:ILE:HG21	2:B:330:SER:HB2	1.87	0.55
1:A:323:GLN:HE22	1:A:326:THR:HB	1.73	0.54
1:A:404:SER:HG	1:A:407:SER:HG	1.55	0.54
2:B:52:ILE:CD1	4:B:601:J9O:C29	2.86	0.53
1:A:472:GLU:HG2	1:A:473:ILE:HG23	1.90	0.53
1:A:616:LYS:NZ	1:A:617:LEU:O	2.42	0.53
1:A:218:LYS:NZ	1:A:373:GLU:O	2.43	0.52
2:B:382:SER:OG	2:B:383:GLY:N	2.42	0.51
2:B:52:ILE:HD12	4:B:601:J9O:C31	2.40	0.51
2:B:191:GLN:HG2	2:B:332:ASN:ND2	2.26	0.51
1:A:250:ASP:N	1:A:250:ASP:OD1	2.41	0.50
1:A:347:GLN:HG3	1:A:378:ILE:HB	1.92	0.50
2:B:404:VAL:HG23	2:B:432:SER:HB3	1.93	0.50
1:A:519:SER:OG	1:A:520:LEU:N	2.45	0.49
2:B:386:ASP:O	2:B:390:ASN:ND2	2.46	0.49
5:B:603:PX8:H50	5:B:603:PX8:H13	1.94	0.49
1:A:427:THR:O	1:A:430:ARG:NH2	2.44	0.49
2:B:68:GLY:O	2:B:72:ASN:ND2	2.38	0.49

*Continued on next page...*

*Continued from previous page...*

Atom-1	Atom-2	Interatomic distance (Å)	Clash overlap (Å)
2:B:254:PHE:CE1	4:B:601:J9O:C38	2.98	0.47
2:B:52:ILE:HG13	4:B:601:J9O:C31	2.44	0.47
2:B:58:ILE:HD11	2:B:199:LEU:HD22	1.97	0.47
1:A:493:ASP:OD2	1:A:495:SER:OG	2.31	0.47
2:B:223:ASP:OD2	2:B:226:SER:HB3	2.15	0.47
1:A:612:LEU:HA	1:A:615:LEU:HD21	1.97	0.46
2:B:99:GLU:HG3	2:B:423:VAL:HG13	1.96	0.46
1:A:219:TRP:HH2	1:A:306:ILE:HD11	1.80	0.46
1:A:397:LYS:HB3	1:A:397:LYS:HE3	1.75	0.46
2:B:221:PHE:H	2:B:221:PHE:HD1	1.60	0.46
2:B:203:LEU:HA	2:B:206:ILE:HG22	1.99	0.45
2:B:52:ILE:HD11	4:B:601:J9O:C31	2.45	0.45
1:A:251:TYR:OH	1:A:472:GLU:OE2	2.32	0.44
2:B:359:HIS:HB2	2:B:366:LEU:HD13	1.99	0.43
1:A:231:LEU:HD11	1:A:245:LEU:HD22	2.00	0.43
1:A:270:LYS:HA	1:A:270:LYS:HD3	1.71	0.43
1:A:330:LYS:HE2	1:A:330:LYS:HB3	1.74	0.43
1:A:389:ILE:HG23	1:A:401:LEU:HD23	1.98	0.43
1:A:533:LYS:HE2	1:A:533:LYS:HB3	1.84	0.43
2:B:100:LEU:HB2	2:B:407:LEU:HD13	2.00	0.43
1:A:529:ASP:O	1:A:533:LYS:HB3	2.18	0.43
2:B:135:ARG:HD3	2:B:135:ARG:HA	1.80	0.43
2:B:470:TRP:CD1	2:B:473:LYS:HB2	2.55	0.42
1:A:340:GLN:HE21	1:A:340:GLN:HB3	1.71	0.42
1:A:418:SER:O	1:A:422:GLN:HB2	2.19	0.42
2:B:75:SER:OG	2:B:224:ALA:O	2.29	0.42
2:B:404:VAL:HG21	2:B:431:PHE:HD2	1.85	0.42
2:B:142:ILE:H	2:B:142:ILE:HG13	1.68	0.42
2:B:411:ARG:HH22	2:B:422:LYS:HB3	1.85	0.42
1:A:555:ILE:HG22	1:A:557:HIS:HD2	1.85	0.42
2:B:446:ASP:N	2:B:446:ASP:OD1	2.52	0.41
5:B:603:PX8:H38	5:B:603:PX8:H32	1.87	0.41
2:B:119:GLY:HA3	2:B:120:PRO:HD2	1.92	0.41
1:A:441:LEU:HD11	1:A:488:PRO:HG3	2.01	0.41
1:A:616:LYS:HA	1:A:616:LYS:HD2	1.95	0.41
2:B:351:LEU:HD23	2:B:351:LEU:HA	1.84	0.41
1:A:601:GLN:NE2	1:A:619:PRO:O	2.53	0.41
2:B:183:SER:OG	2:B:185:SER:OG	2.37	0.41
2:B:95:LEU:HD23	2:B:95:LEU:HA	1.93	0.41
2:B:110:HIS:CE1	2:B:126:ARG:HH21	2.39	0.40
5:B:602:PX8:H65	5:B:602:PX8:H70	1.79	0.40

*Continued on next page...*

*Continued from previous page...*

Atom-1	Atom-2	Interatomic distance (Å)	Clash overlap (Å)
2:B:236:PRO:O	2:B:239:PHE:HB3	2.21	0.40
2:B:459:THR:HA	2:B:462:PRO:HD2	2.04	0.40

There are no symmetry-related clashes.

## 5.3 Torsion angles [i](#)

### 5.3.1 Protein backbone [i](#)

In the following table, the Percentiles column shows the percent Ramachandran outliers of the chain as a percentile score with respect to all PDB entries followed by that with respect to all EM entries.

The Analysed column shows the number of residues for which the backbone conformation was analysed, and the total number of residues.

Mol	Chain	Analysed	Favoured	Allowed	Outliers	Percentiles
1	A	466/647 (72%)	423 (91%)	42 (9%)	1 (0%)	47 78
2	B	451/521 (87%)	400 (89%)	48 (11%)	3 (1%)	22 55
All	All	917/1168 (78%)	823 (90%)	90 (10%)	4 (0%)	38 67

All (4) Ramachandran outliers are listed below:

Mol	Chain	Res	Type
1	A	210	ARG
2	B	120	PRO
2	B	224	ALA
2	B	121	LEU

### 5.3.2 Protein sidechains [i](#)

In the following table, the Percentiles column shows the percent sidechain outliers of the chain as a percentile score with respect to all PDB entries followed by that with respect to all EM entries.

The Analysed column shows the number of residues for which the sidechain conformation was analysed, and the total number of residues.

*Continued on next page...*

*Continued from previous page...*

Mol	Chain	Analysed	Rotameric	Outliers	Percentiles	
1	A	391/529 (74%)	389 (100%)	2 (0%)	88	94
2	B	388/446 (87%)	382 (98%)	6 (2%)	65	82
All	All	779/975 (80%)	771 (99%)	8 (1%)	77	88

All (8) residues with a non-rotameric sidechain are listed below:

Mol	Chain	Res	Type
1	A	207	ARG
1	A	614	ARG
2	B	128	TRP
2	B	158	CYS
2	B	221	PHE
2	B	222	LYS
2	B	223	ASP
2	B	226	SER

Sometimes sidechains can be flipped to improve hydrogen bonding and reduce clashes. All (6) such sidechains are listed below:

Mol	Chain	Res	Type
1	A	296	GLN
1	A	340	GLN
1	A	353	ASN
1	A	530	GLN
1	A	557	HIS
2	B	71	GLN

### 5.3.3 RNA [i](#)

There are no RNA molecules in this entry.

## 5.4 Non-standard residues in protein, DNA, RNA chains [i](#)

There are no non-standard protein/DNA/RNA residues in this entry.

## 5.5 Carbohydrates i

8 monosaccharides are modelled in this entry.

In the following table, the Counts columns list the number of bonds (or angles) for which Mogul statistics could be retrieved, the number of bonds (or angles) that are observed in the model and the number of bonds (or angles) that are defined in the Chemical Component Dictionary. The Link column lists molecule types, if any, to which the group is linked. The Z score for a bond length (or angle) is the number of standard deviations the observed value is removed from the expected value. A bond length (or angle) with  $|Z| > 2$  is considered an outlier worth inspection. RMSZ is the root-mean-square of all Z scores of the bond lengths (or angles).

Mol	Type	Chain	Res	Link	Bond lengths			Bond angles		
					Counts	RMSZ	# Z  > 2	Counts	RMSZ	# Z  > 2
3	NAG	C	1	3,1	14,14,15	0.28	0	17,19,21	0.75	1 (5%)
3	NAG	C	2	3	14,14,15	0.44	0	17,19,21	0.49	0
3	NAG	D	1	3,1	14,14,15	1.08	1 (7%)	17,19,21	1.05	2 (11%)
3	NAG	D	2	3	14,14,15	0.46	0	17,19,21	0.59	0
3	NAG	E	1	3,1	14,14,15	0.39	0	17,19,21	1.22	1 (5%)
3	NAG	E	2	3	14,14,15	0.22	0	17,19,21	0.74	1 (5%)
3	NAG	F	1	3,1	14,14,15	0.56	0	17,19,21	0.39	0
3	NAG	F	2	3	14,14,15	0.45	0	17,19,21	0.63	1 (5%)

In the following table, the Chirals column lists the number of chiral outliers, the number of chiral centers analysed, the number of these observed in the model and the number defined in the Chemical Component Dictionary. Similar counts are reported in the Torsion and Rings columns. '-' means no outliers of that kind were identified.

Mol	Type	Chain	Res	Link	Chirals	Torsions	Rings
3	NAG	C	1	3,1	-	0/6/23/26	0/1/1/1
3	NAG	C	2	3	-	2/6/23/26	0/1/1/1
3	NAG	D	1	3,1	-	2/6/23/26	0/1/1/1
3	NAG	D	2	3	-	2/6/23/26	0/1/1/1
3	NAG	E	1	3,1	-	2/6/23/26	0/1/1/1
3	NAG	E	2	3	-	2/6/23/26	0/1/1/1
3	NAG	F	1	3,1	-	0/6/23/26	0/1/1/1
3	NAG	F	2	3	-	1/6/23/26	0/1/1/1

All (1) bond length outliers are listed below:

Mol	Chain	Res	Type	Atoms	Z	Observed(Å)	Ideal(Å)
3	D	1	NAG	O5-C1	-3.55	1.38	1.43

All (6) bond angle outliers are listed below:

Mol	Chain	Res	Type	Atoms	Z	Observed(°)	Ideal(°)
3	E	1	NAG	C1-O5-C5	4.14	117.80	112.19
3	E	2	NAG	C1-O5-C5	2.77	115.95	112.19
3	C	1	NAG	C1-O5-C5	2.54	115.64	112.19
3	D	1	NAG	C4-C3-C2	2.29	114.38	111.02
3	D	1	NAG	C1-O5-C5	-2.20	109.21	112.19
3	F	2	NAG	C1-O5-C5	2.20	115.17	112.19

There are no chirality outliers.

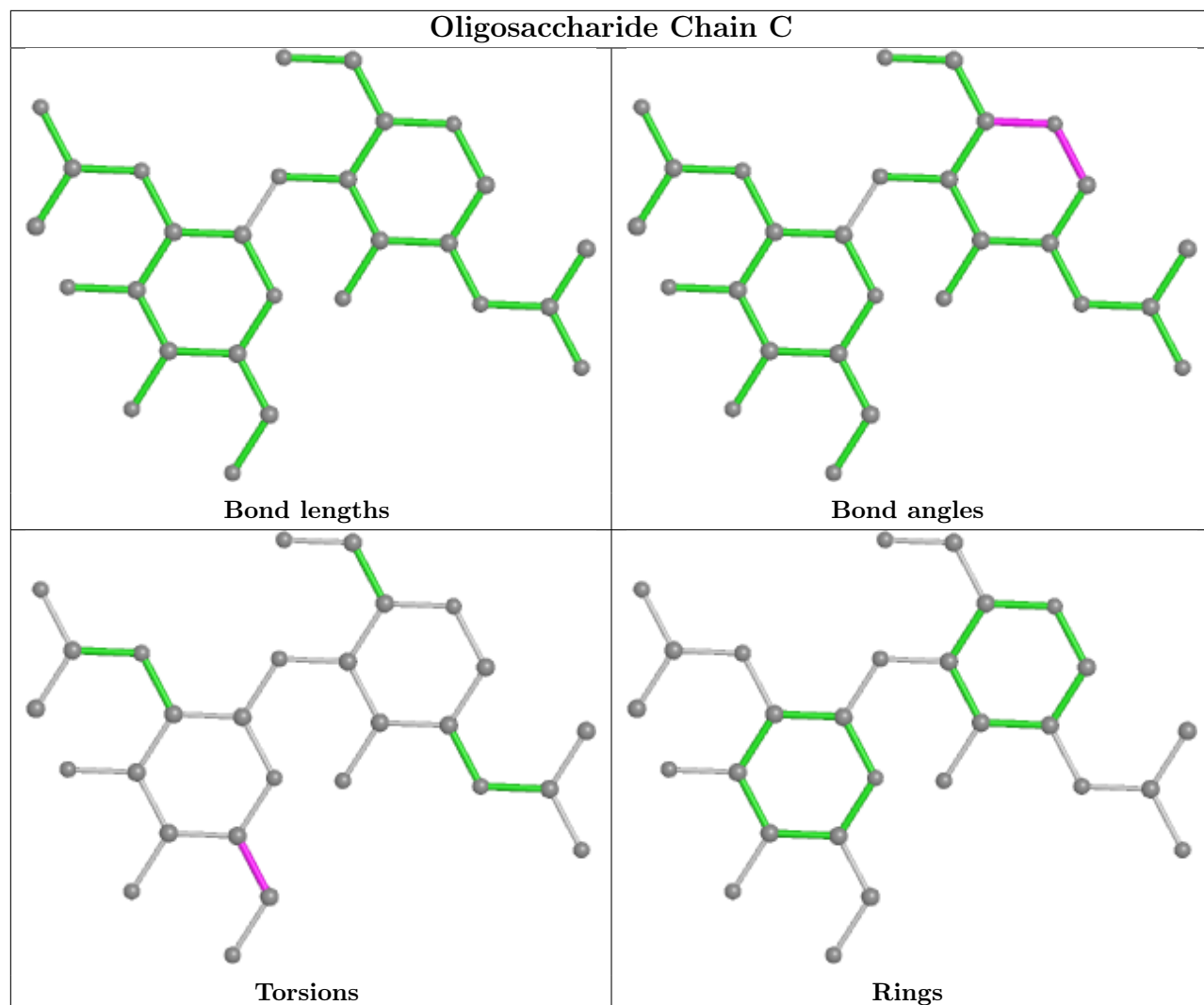
All (11) torsion outliers are listed below:

Mol	Chain	Res	Type	Atoms
3	C	2	NAG	O5-C5-C6-O6
3	D	1	NAG	O5-C5-C6-O6
3	E	2	NAG	O5-C5-C6-O6
3	D	1	NAG	C4-C5-C6-O6
3	E	2	NAG	C4-C5-C6-O6
3	C	2	NAG	C4-C5-C6-O6
3	D	2	NAG	C8-C7-N2-C2
3	D	2	NAG	O7-C7-N2-C2
3	E	1	NAG	C4-C5-C6-O6
3	E	1	NAG	O5-C5-C6-O6
3	F	2	NAG	C4-C5-C6-O6

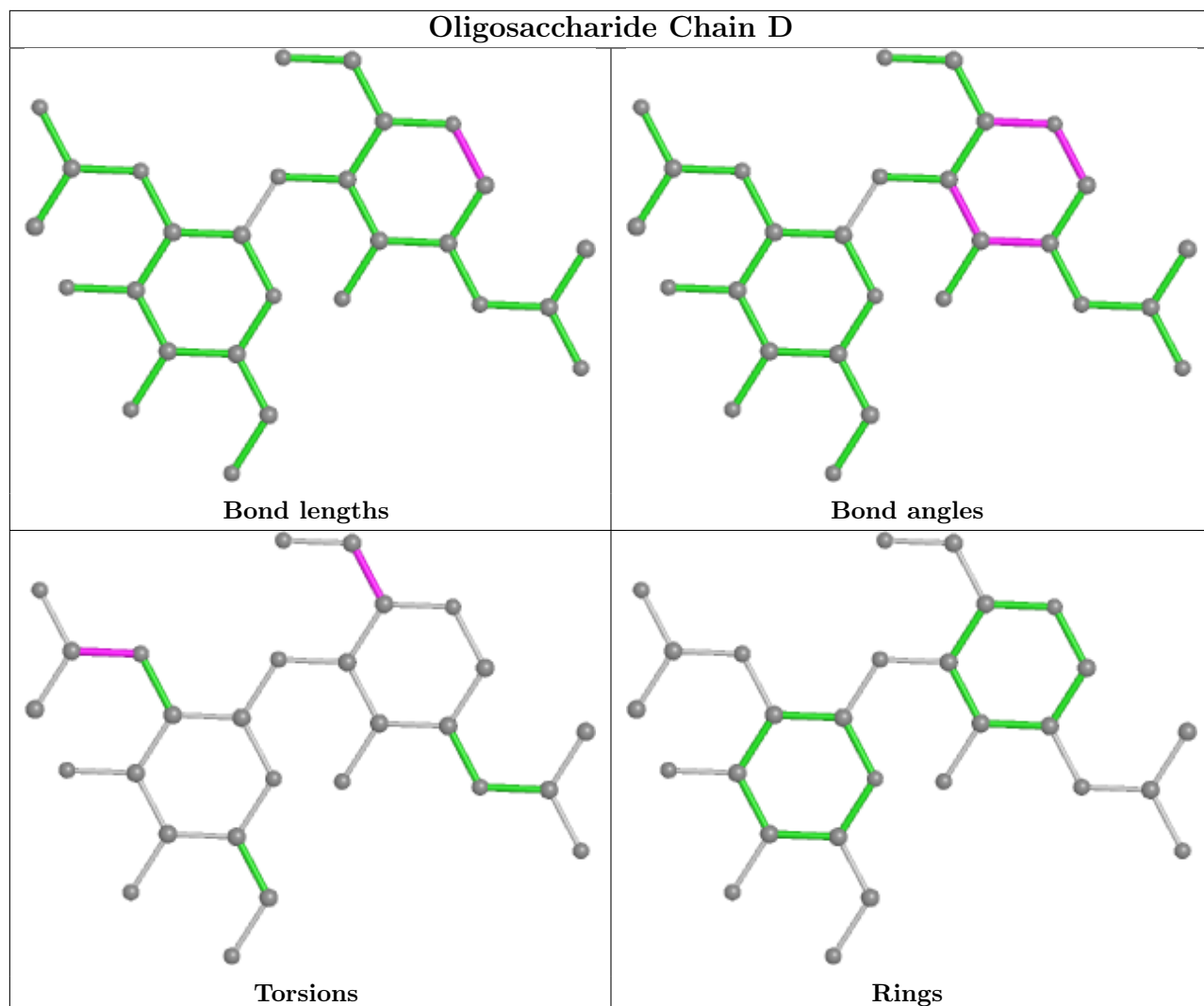
There are no ring outliers.

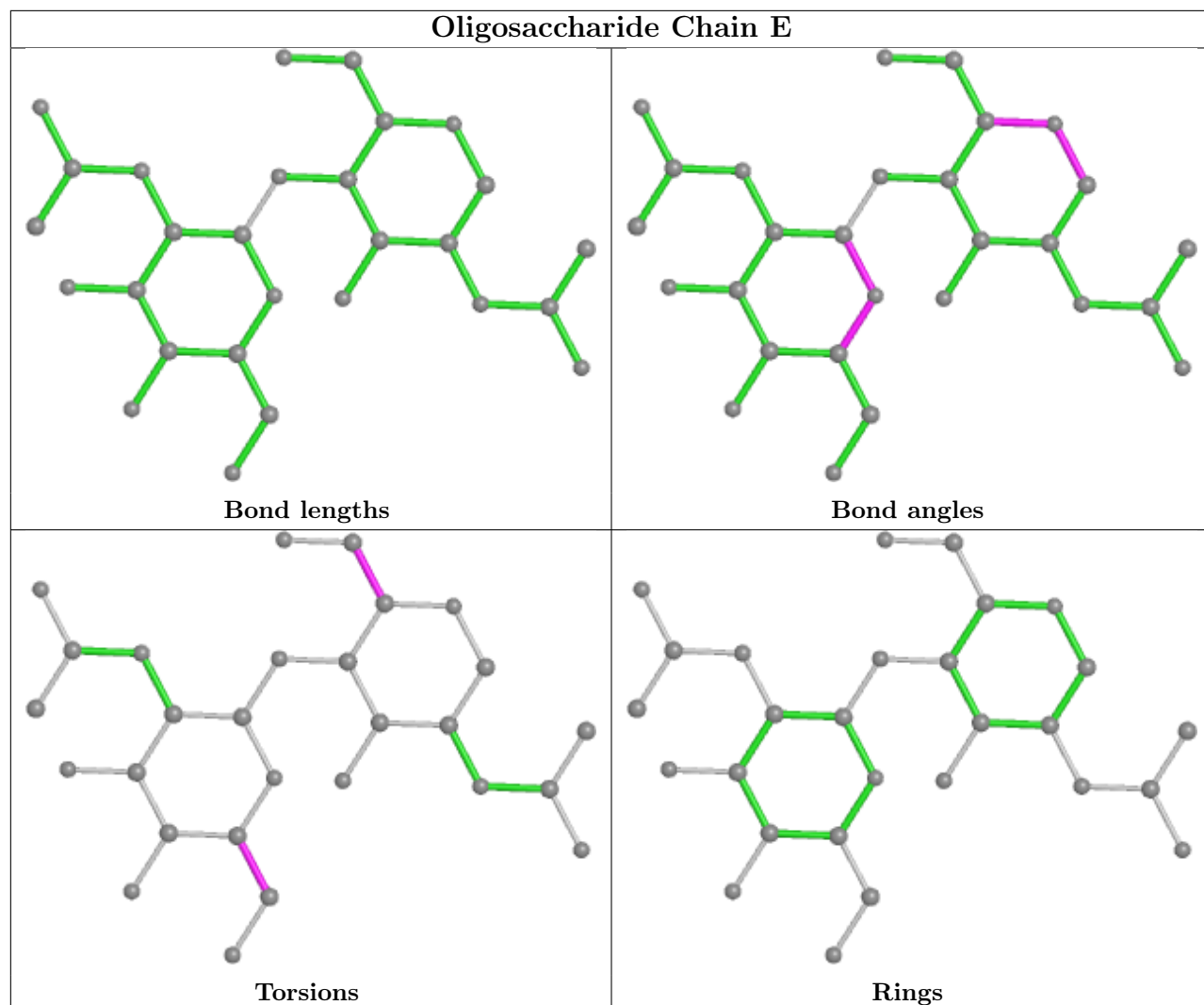
No monomer is involved in short contacts.

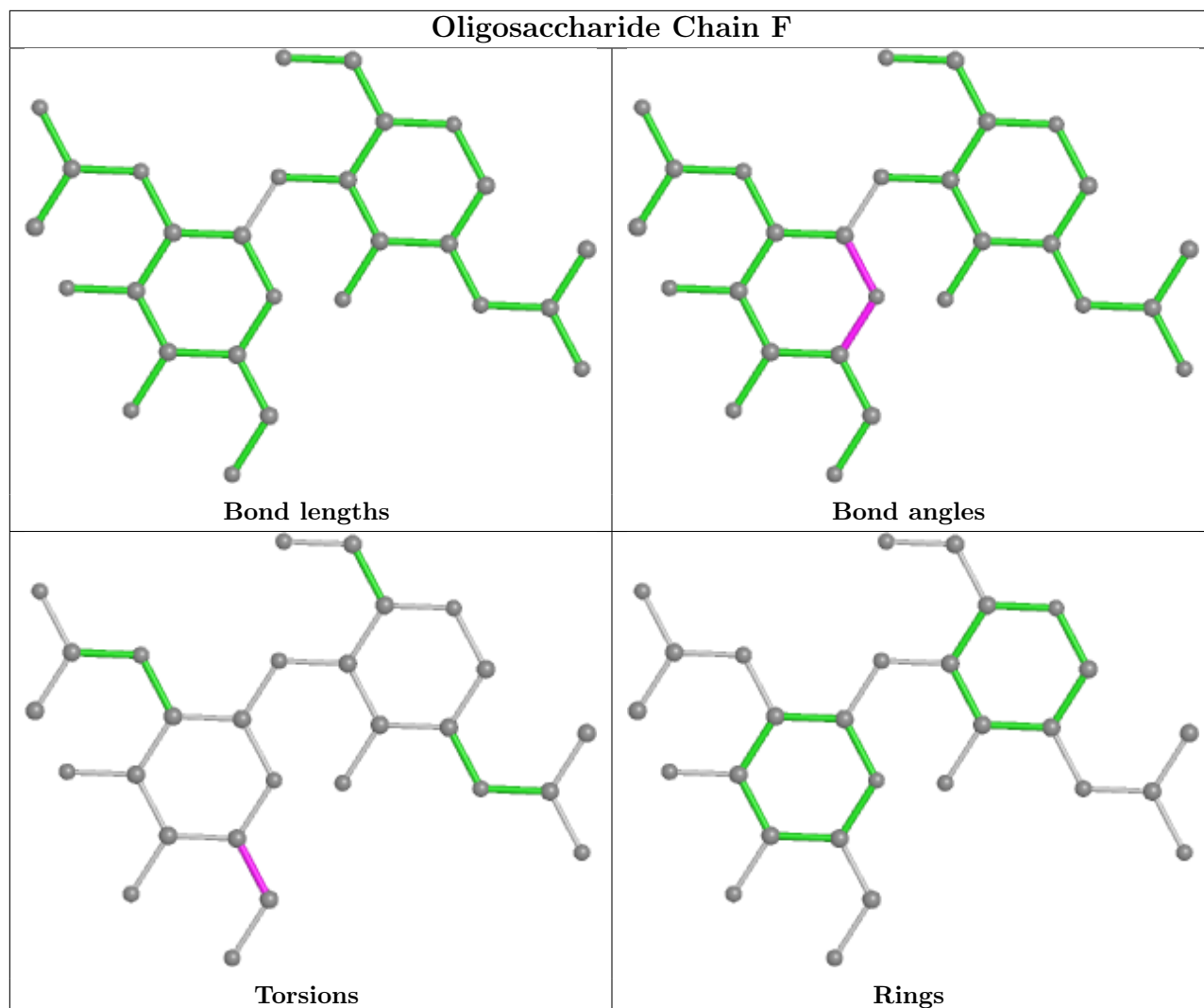
The following is a two-dimensional graphical depiction of Mogul quality analysis of bond lengths, bond angles, torsion angles, and ring geometry for oligosaccharide.











## 5.6 Ligand geometry [i](#)

3 ligands are modelled in this entry.

In the following table, the Counts columns list the number of bonds (or angles) for which Mogul statistics could be retrieved, the number of bonds (or angles) that are observed in the model and the number of bonds (or angles) that are defined in the Chemical Component Dictionary. The Link column lists molecule types, if any, to which the group is linked. The Z score for a bond length (or angle) is the number of standard deviations the observed value is removed from the expected value. A bond length (or angle) with  $|Z| > 2$  is considered an outlier worth inspection. RMSZ is the root-mean-square of all Z scores of the bond lengths (or angles).

Mol	Type	Chain	Res	Link	Bond lengths			Bond angles		
					Counts	RMSZ	$\# Z  > 2$	Counts	RMSZ	$\# Z  > 2$
5	PX8	B	603	-	47,47,47	0.96	2 (4%)	51,52,52	1.08	3 (5%)
5	PX8	B	602	-	47,47,47	0.93	2 (4%)	51,52,52	1.04	2 (3%)
4	J9O	B	601	-	43,43,43	8.27	18 (41%)	55,60,60	2.45	10 (18%)

In the following table, the Chirals column lists the number of chiral outliers, the number of chiral centers analysed, the number of these observed in the model and the number defined in the Chemical Component Dictionary. Similar counts are reported in the Torsion and Rings columns. '-' means no outliers of that kind were identified.

Mol	Type	Chain	Res	Link	Chirals	Torsions	Rings
5	PX8	B	603	-	-	7/49/49/49	-
5	PX8	B	602	-	-	10/49/49/49	-
4	J9O	B	601	-	-	8/22/34/34	0/5/5/5

All (22) bond length outliers are listed below:

Mol	Chain	Res	Type	Atoms	Z	Observed(Å)	Ideal(Å)
4	B	601	J9O	C10-N06	-36.92	1.12	1.47
4	B	601	J9O	C11-N06	-25.35	0.97	1.47
4	B	601	J9O	C12-N06	-16.42	1.15	1.47
4	B	601	J9O	C10-C15	15.88	1.72	1.51
4	B	601	J9O	C14-N07	-8.69	1.31	1.47
4	B	601	J9O	C13-N07	-8.61	1.31	1.47
4	B	601	J9O	C16-C10	7.39	1.72	1.52
4	B	601	J9O	C17-N07	6.07	1.47	1.35
4	B	601	J9O	C15-N09	5.63	1.35	1.29
4	B	601	J9O	C22-C18	-5.29	1.36	1.47
4	B	601	J9O	C11-C13	4.69	1.69	1.51
4	B	601	J9O	C14-C12	4.44	1.68	1.51
5	B	603	PX8	O5-C4	4.27	1.45	1.33
5	B	602	PX8	O5-C4	4.24	1.45	1.33
5	B	603	PX8	O7-C22	4.08	1.45	1.34
4	B	601	J9O	C18-N08	-3.94	1.33	1.40
5	B	602	PX8	O7-C22	3.84	1.45	1.34
4	B	601	J9O	C21-N09	-3.59	1.32	1.39
4	B	601	J9O	C22-C21	-2.31	1.37	1.40
4	B	601	J9O	C38-C39	2.03	1.41	1.38
4	B	601	J9O	C15-N08	-2.01	1.35	1.39
4	B	601	J9O	C37-C39	2.00	1.41	1.38

All (15) bond angle outliers are listed below:

Mol	Chain	Res	Type	Atoms	Z	Observed(°)	Ideal(°)
4	B	601	J9O	C12-N06-C11	11.32	129.76	109.08
4	B	601	J9O	C14-N07-C13	7.52	127.10	112.62
4	B	601	J9O	C11-N06-C10	5.04	121.20	112.53
4	B	601	J9O	C19-N08-C18	4.75	121.88	117.23
5	B	603	PX8	O7-C22-C23	3.90	119.91	111.50

*Continued on next page...*

Continued from previous page...

Mol	Chain	Res	Type	Atoms	Z	Observed(°)	Ideal(°)
4	B	601	J9O	N08-C15-N09	-3.82	120.86	124.08
4	B	601	J9O	C19-N08-C15	-3.72	117.43	120.79
5	B	602	PX8	O7-C22-C23	3.50	119.04	111.50
5	B	603	PX8	O5-C4-C5	3.14	121.76	111.91
4	B	601	J9O	C22-C18-N08	3.11	118.69	114.60
4	B	601	J9O	C12-N06-C10	-2.94	107.46	112.53
5	B	602	PX8	O5-C4-C5	2.58	120.00	111.91
4	B	601	J9O	C20-O03-C32	-2.48	113.31	117.67
4	B	601	J9O	O05-C23-C19	2.28	119.77	116.28
5	B	603	PX8	O5-C4-O6	-2.21	118.01	123.59

There are no chirality outliers.

All (25) torsion outliers are listed below:

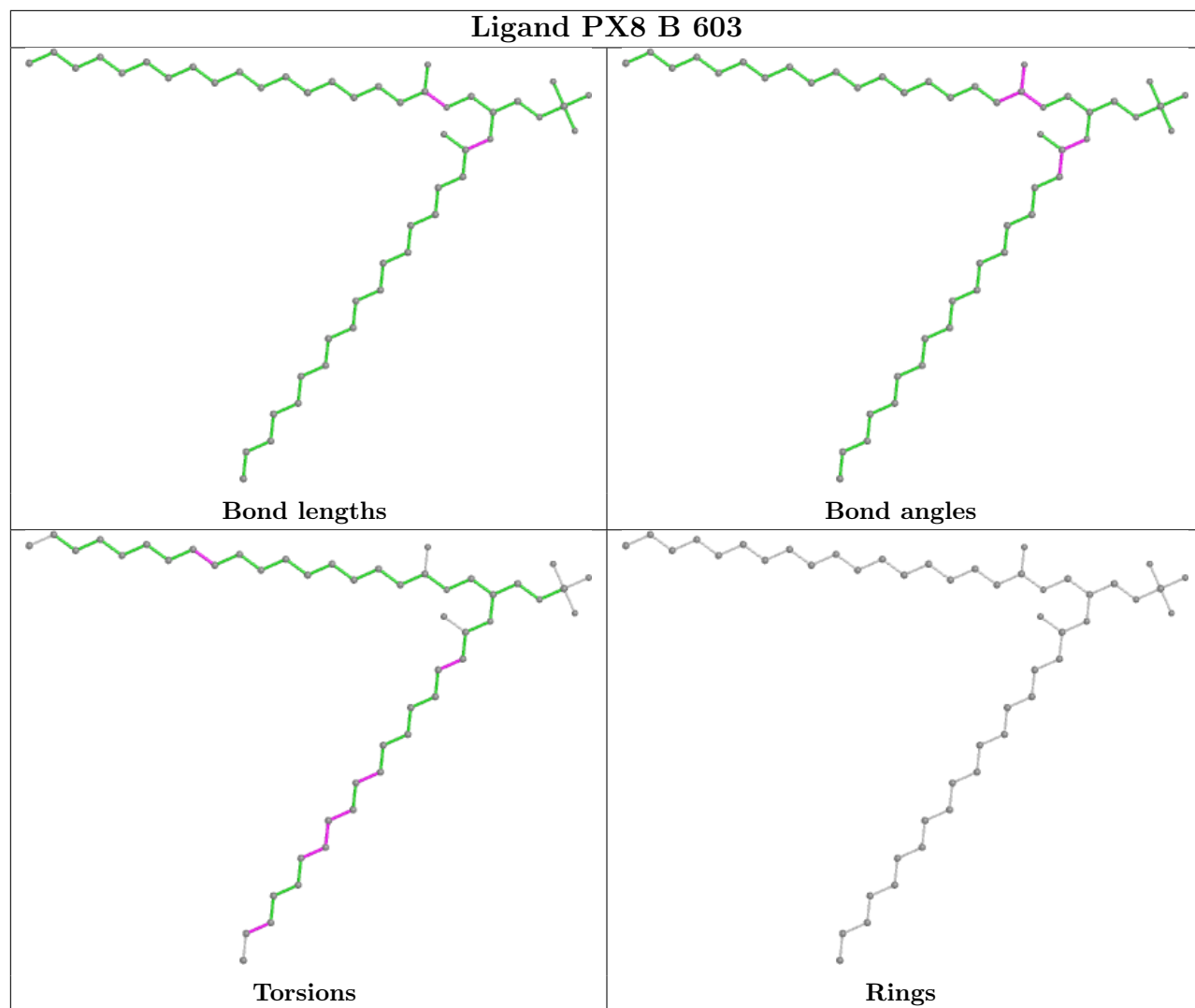
Mol	Chain	Res	Type	Atoms
4	B	601	J9O	C15-C10-N06-C12
4	B	601	J9O	C16-C10-N06-C12
5	B	602	PX8	C4-C5-C6-C7
5	B	602	PX8	C5-C6-C7-C8
4	B	601	J9O	C34-C32-O03-C20
5	B	603	PX8	C30-C31-C32-C33
5	B	602	PX8	C26-C27-C28-C29
4	B	601	J9O	C35-C32-O03-C20
5	B	602	PX8	C32-C33-C34-C35
5	B	602	PX8	C28-C29-C30-C31
5	B	602	PX8	C27-C28-C29-C30
5	B	602	PX8	C25-C26-C27-C28
5	B	603	PX8	C22-C23-C24-C25
5	B	603	PX8	C12-C13-C14-C15
5	B	602	PX8	C31-C32-C33-C34
5	B	602	PX8	C6-C7-C8-C9
5	B	603	PX8	C28-C29-C30-C31
5	B	603	PX8	C31-C32-C33-C34
5	B	602	PX8	C35-C36-C37-C38
4	B	601	J9O	C19-C23-O05-C33
4	B	601	J9O	C29-C23-O05-C33
5	B	603	PX8	C32-C33-C34-C35
5	B	603	PX8	C36-C37-C38-C39
4	B	601	J9O	C36-C33-O05-C23
4	B	601	J9O	O02-C17-C20-O03

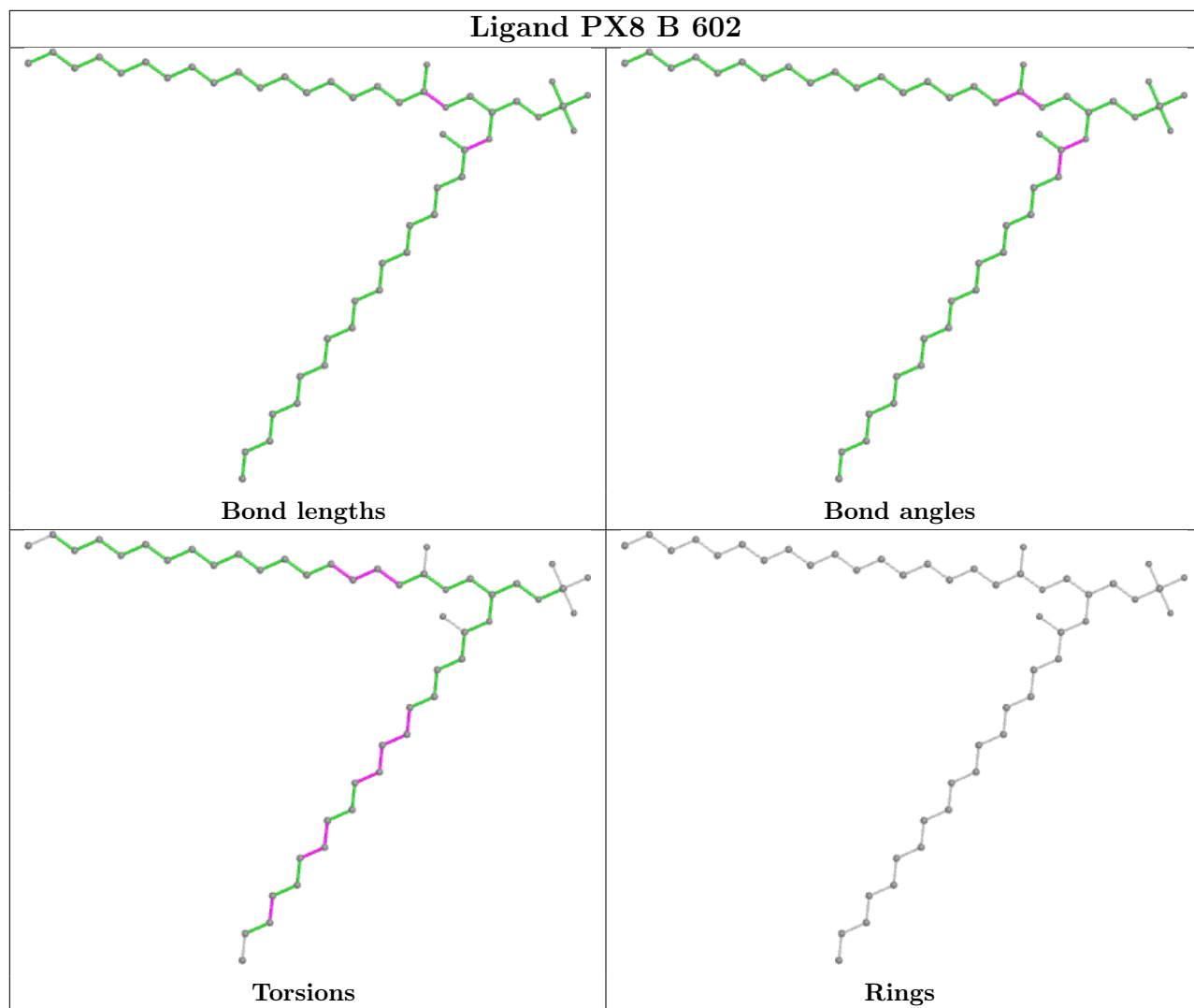
There are no ring outliers.

3 monomers are involved in 11 short contacts:

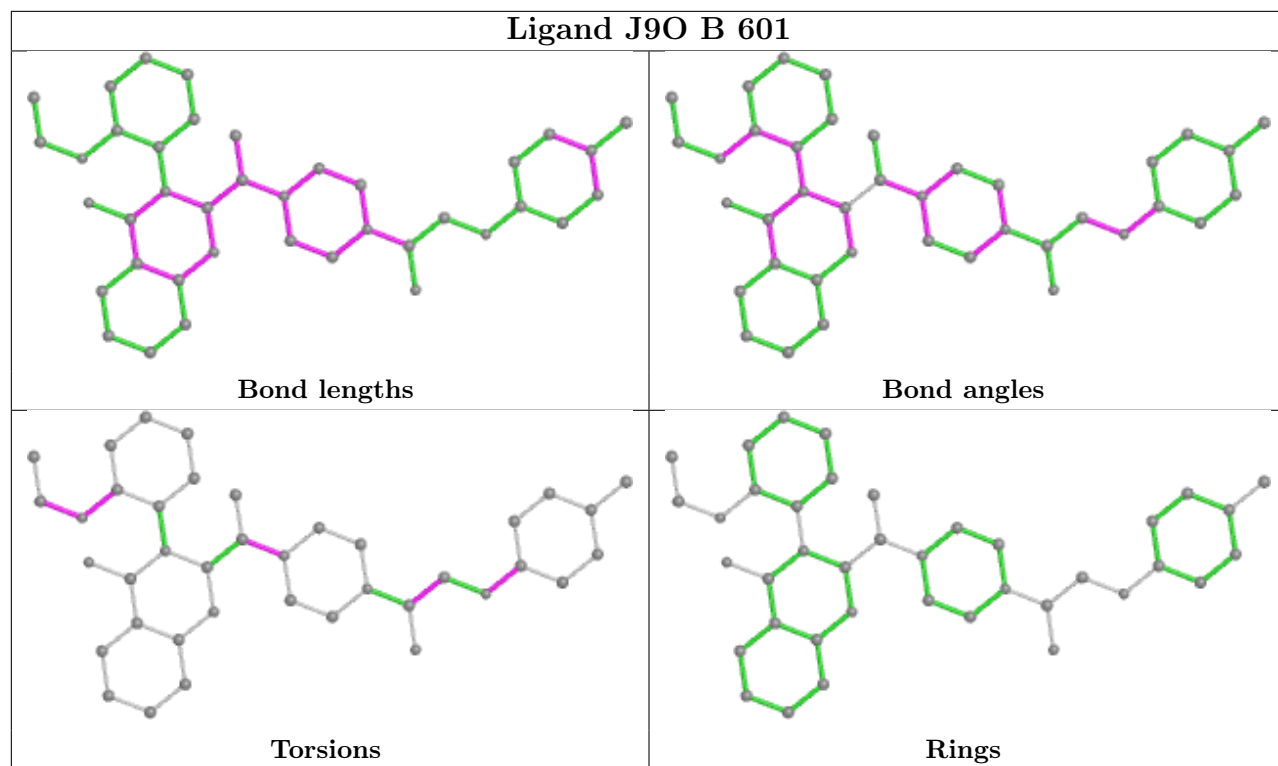
Mol	Chain	Res	Type	Clashes	Symm-Clashes
5	B	603	PX8	2	0
5	B	602	PX8	2	0
4	B	601	J9O	7	0

The following is a two-dimensional graphical depiction of Mogul quality analysis of bond lengths, bond angles, torsion angles, and ring geometry for all instances of the Ligand of Interest. In addition, ligands with molecular weight > 250 and outliers as shown on the validation Tables will also be included. For torsion angles, if less than 5% of the Mogul distribution of torsion angles is within 10 degrees of the torsion angle in question, then that torsion angle is considered an outlier. Any bond that is central to one or more torsion angles identified as an outlier by Mogul will be highlighted in the graph. For rings, the root-mean-square deviation (RMSD) between the ring in question and similar rings identified by Mogul is calculated over all ring torsion angles. If the average RMSD is greater than 60 degrees and the minimal RMSD between the ring in question and any Mogul-identified rings is also greater than 60 degrees, then that ring is considered an outlier. The outliers are highlighted in purple. The color gray indicates Mogul did not find sufficient equivalents in the CSD to analyse the geometry.









## 5.7 Other polymers [\(i\)](#)

There are no such residues in this entry.

## 5.8 Polymer linkage issues [\(i\)](#)

There are no chain breaks in this entry.

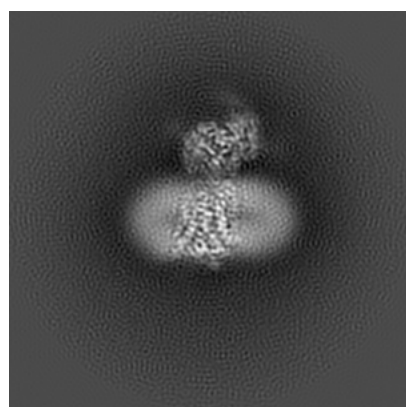
## 6 Map visualisation [i](#)

This section contains visualisations of the EMDB entry EMD-31251. These allow visual inspection of the internal detail of the map and identification of artifacts.

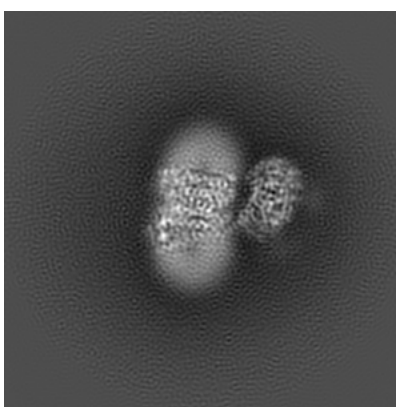
No raw map or half-maps were deposited for this entry and therefore no images, graphs, etc. pertaining to the raw map can be shown.

### 6.1 Orthogonal projections [i](#)

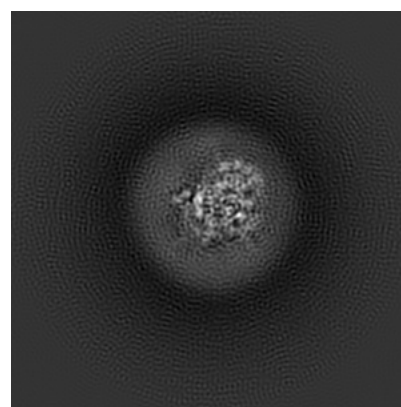
#### 6.1.1 Primary map



X



Y

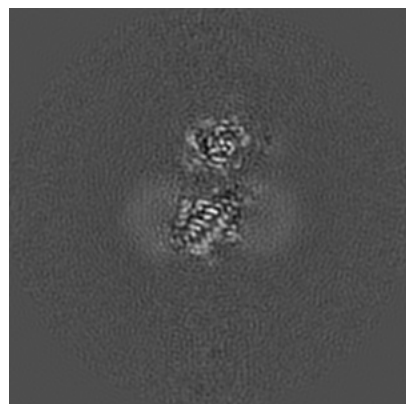


Z

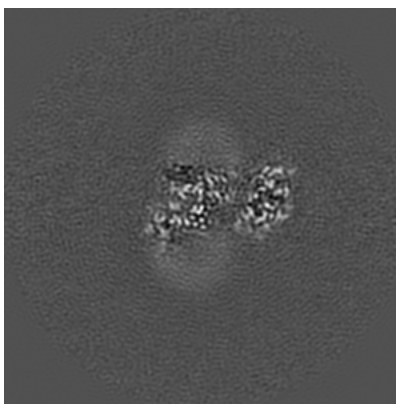
The images above show the map projected in three orthogonal directions.

### 6.2 Central slices [i](#)

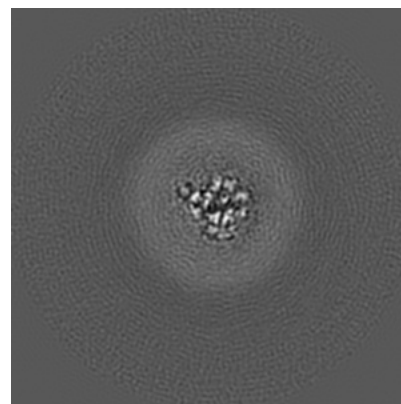
#### 6.2.1 Primary map



X Index: 128



Y Index: 128

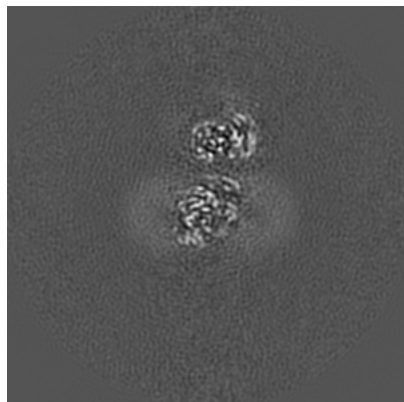


Z Index: 128

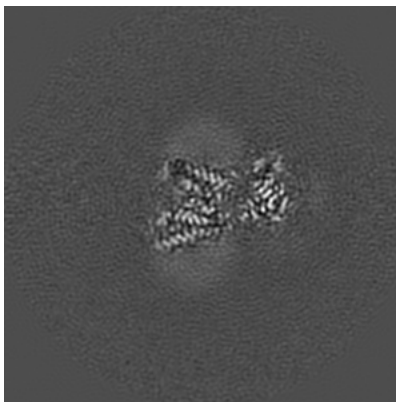
The images above show central slices of the map in three orthogonal directions.

## 6.3 Largest variance slices [i](#)

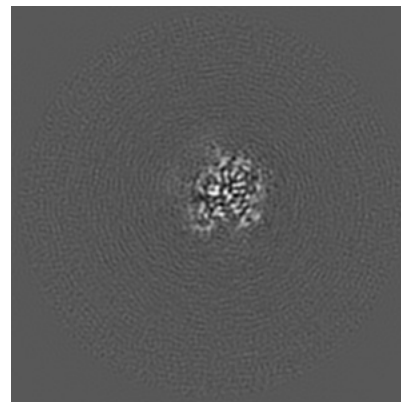
### 6.3.1 Primary map



X Index: 137



Y Index: 136



Z Index: 170

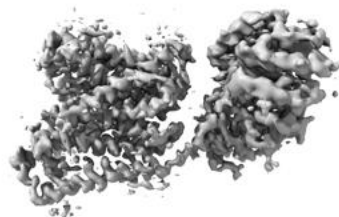
The images above show the largest variance slices of the map in three orthogonal directions.

## 6.4 Orthogonal surface views [i](#)

### 6.4.1 Primary map



X



Y



Z

The images above show the 3D surface view of the map at the recommended contour level 0.03. These images, in conjunction with the slice images, may facilitate assessment of whether an appropriate contour level has been provided.

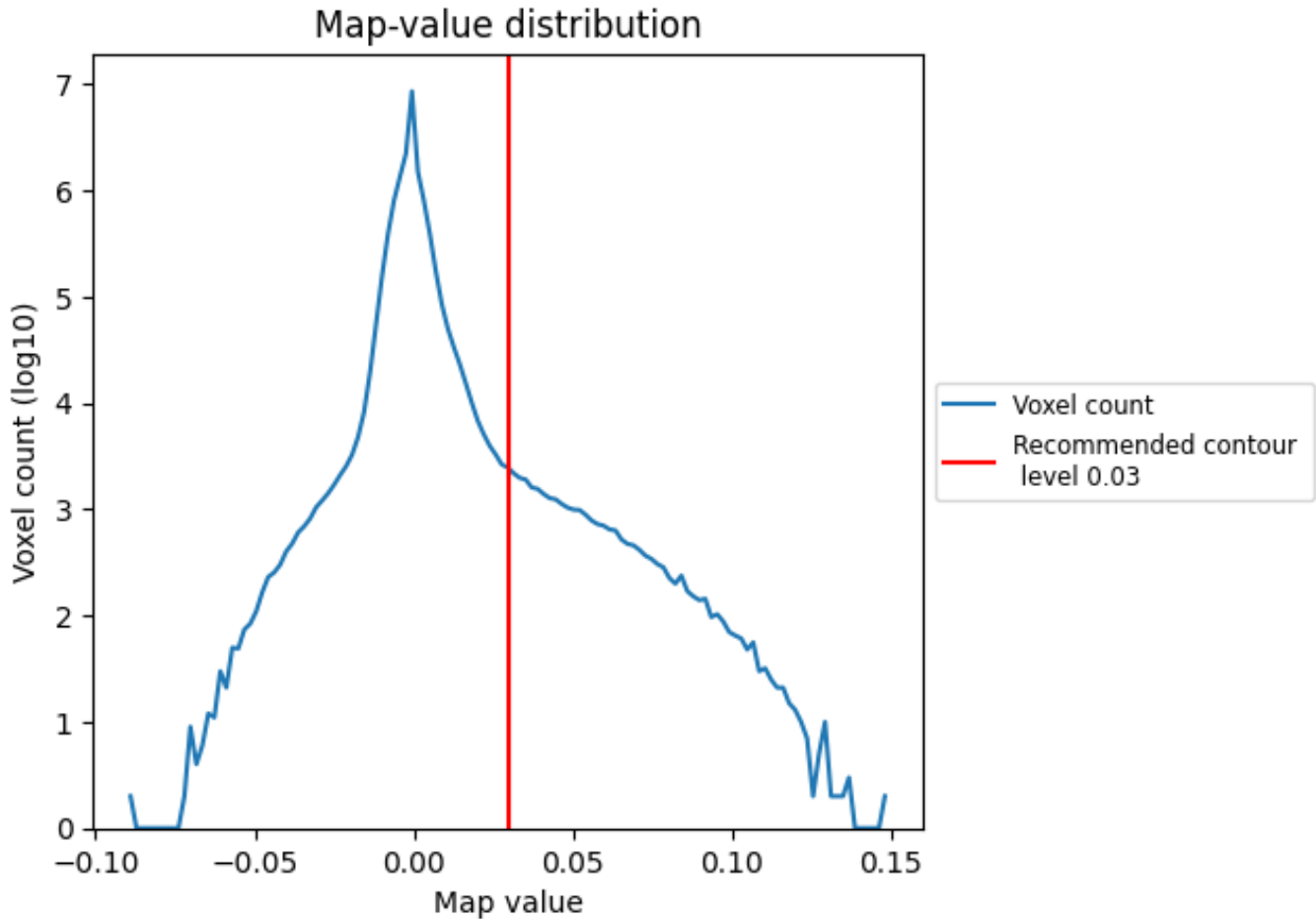
## 6.5 Mask visualisation

This section was not generated. No masks/segmentation were deposited.

## 7 Map analysis [i](#)

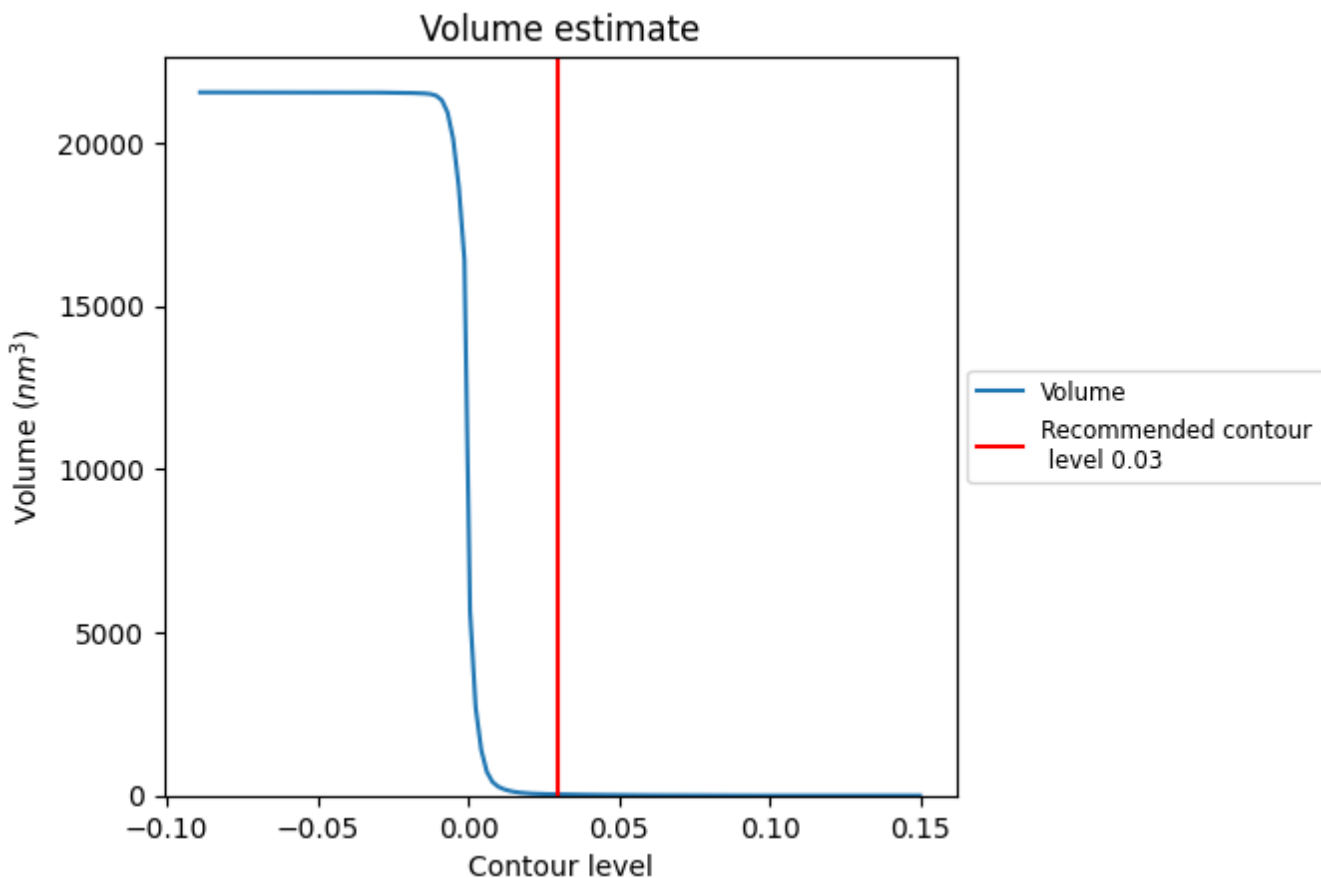
This section contains the results of statistical analysis of the map.

### 7.1 Map-value distribution [i](#)



The map-value distribution is plotted in 128 intervals along the x-axis. The y-axis is logarithmic. A spike in this graph at zero usually indicates that the volume has been masked.

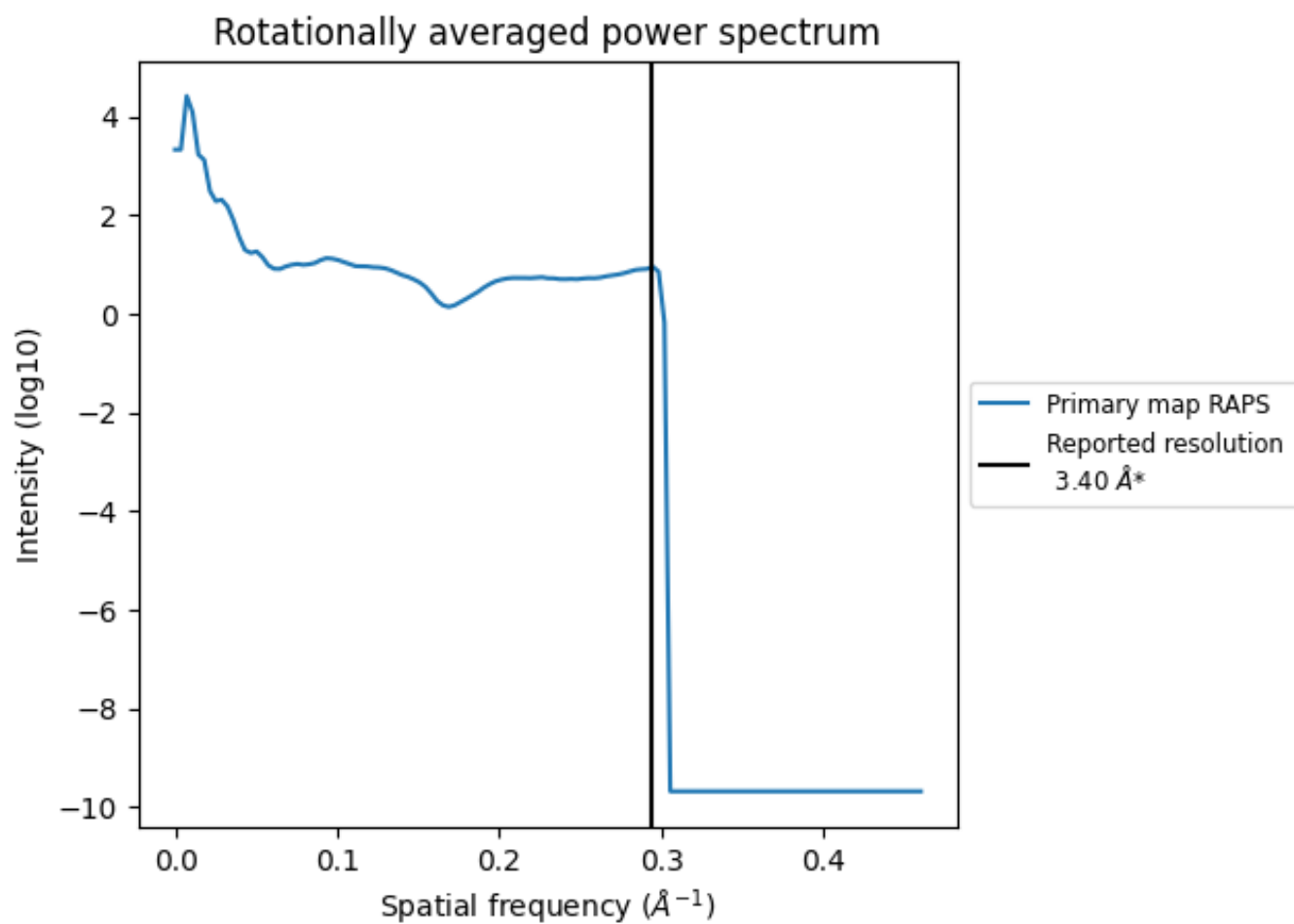
## 7.2 Volume estimate [\(i\)](#)



The volume at the recommended contour level is 37 nm<sup>3</sup>; this corresponds to an approximate mass of 33 kDa.

The volume estimate graph shows how the enclosed volume varies with the contour level. The recommended contour level is shown as a vertical line and the intersection between the line and the curve gives the volume of the enclosed surface at the given level.

### 7.3 Rotationally averaged power spectrum [\(i\)](#)



\*Reported resolution corresponds to spatial frequency of 0.294 Å<sup>-1</sup>

## 8 Fourier-Shell correlation

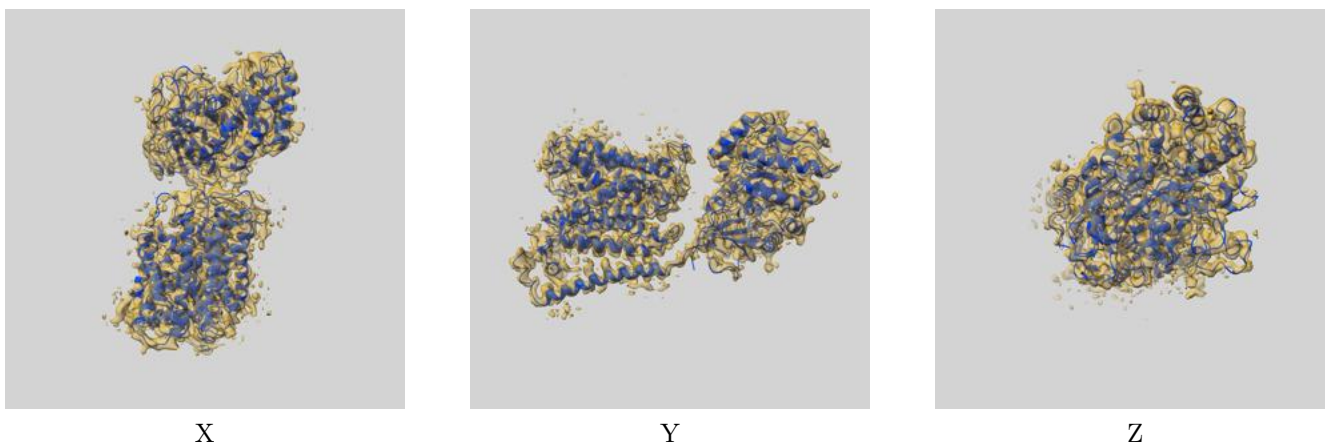
This section was not generated. No FSC curve or half-maps provided.



## 9 Map-model fit [i](#)

This section contains information regarding the fit between EMDB map EMD-31251 and PDB model 7EPZ. Per-residue inclusion information can be found in section 3 on page 6.

### 9.1 Map-model overlay [i](#)



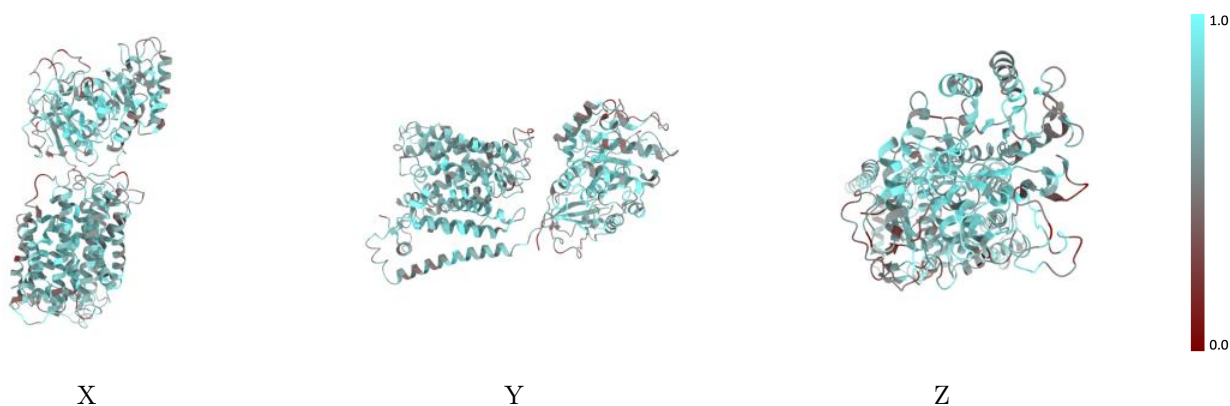
The images above show the 3D surface view of the map at the recommended contour level 0.03 at 50% transparency in yellow overlaid with a ribbon representation of the model coloured in blue. These images allow for the visual assessment of the quality of fit between the atomic model and the map.

## 9.2 Q-score mapped to coordinate model [i](#)



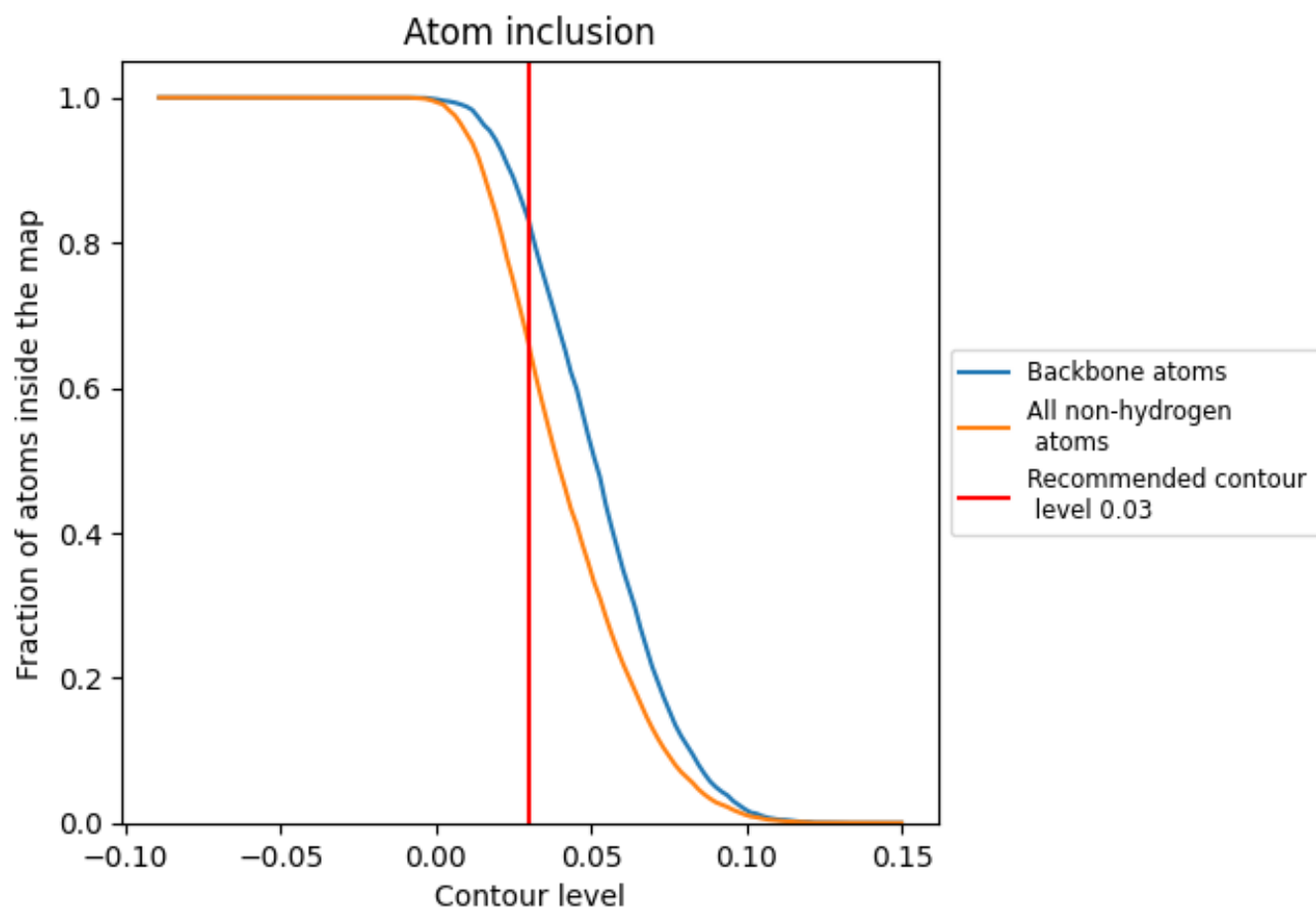
The images above show the model with each residue coloured according to its Q-score. This shows their resolvability in the map with higher Q-score values reflecting better resolvability. Please note: Q-score is calculating the resolvability of atoms, and thus high values are only expected at resolutions at which atoms can be resolved. Low Q-score values may therefore be expected for many entries.

## 9.3 Atom inclusion mapped to coordinate model [i](#)



The images above show the model with each residue coloured according to its atom inclusion. This shows to what extent they are inside the map at the recommended contour level (0.03).















## 9.4 Atom inclusion [i](#)



At the recommended contour level, 83% of all backbone atoms, 66% of all non-hydrogen atoms, are inside the map.

## 9.5 Map-model fit summary [i](#)

The table lists the average atom inclusion at the recommended contour level (0.03) and Q-score for the entire model and for each chain.

Chain	Atom inclusion	Q-score
All	 0.6590	 0.4860
A	 0.6752	 0.4890
B	 0.6592	 0.4900
C	 0.1429	 0.2520
D	 0.1071	 0.1190
E	 0.1071	 0.2380
F	 0.1786	 0.2690

