



Full wwPDB X-ray Structure Validation Report ⓘ

May 22, 2020 – 01:42 am BST

PDB ID : 3EPO
Title : Crystal structure of *Caulobacter crescentus* ThiC complexed with HMP-P
Authors : Li, S.; Chatterjee, A.; Zhang, Y.; Grove, T.L.; Lee, M.; Krebs, C.; Booker, S.J.; Begley, T.P.; Ealick, S.E.
Deposited on : 2008-09-29
Resolution : 2.10 Å(reported)

This is a Full wwPDB X-ray Structure Validation Report for a publicly released PDB entry.

We welcome your comments at validation@mail.wwpdb.org

A user guide is available at

<https://www.wwpdb.org/validation/2017/XrayValidationReportHelp>

with specific help available everywhere you see the ⓘ symbol.

The following versions of software and data (see [references ⓘ](#)) were used in the production of this report:

MolProbity : 4.02b-467
Mogul : 1.8.5 (274361), CSD as541be (2020)
Xtriage (Phenix) : 1.13
EDS : 2.11
Percentile statistics : 20191225.v01 (using entries in the PDB archive December 25th 2019)
Refmac : 5.8.0158
CCP4 : 7.0.044 (Gargrove)
Ideal geometry (proteins) : Engh & Huber (2001)
Ideal geometry (DNA, RNA) : Parkinson et al. (1996)
Validation Pipeline (wwPDB-VP) : 2.11

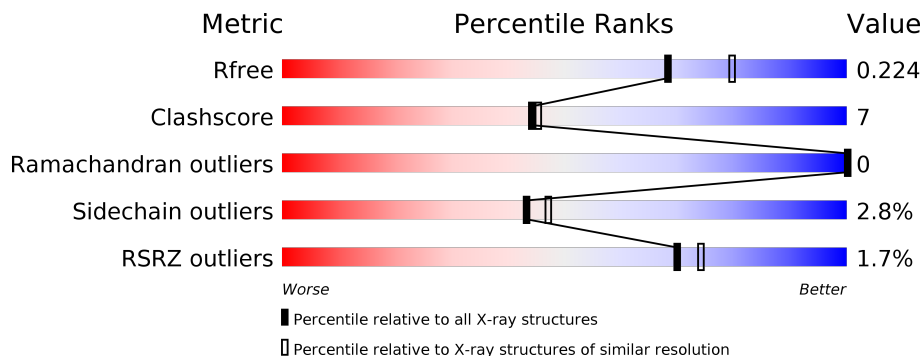
1 Overall quality at a glance

The following experimental techniques were used to determine the structure:

X-RAY DIFFRACTION

The reported resolution of this entry is 2.10 Å.

Percentile scores (ranging between 0-100) for global validation metrics of the entry are shown in the following graphic. The table shows the number of entries on which the scores are based.



Metric	Whole archive (#Entries)	Similar resolution (#Entries, resolution range(Å))
R_{free}	130704	5197 (2.10-2.10)
Clashscore	141614	5710 (2.10-2.10)
Ramachandran outliers	138981	5647 (2.10-2.10)
Sidechain outliers	138945	5648 (2.10-2.10)
RSRZ outliers	127900	5083 (2.10-2.10)

The table below summarises the geometric issues observed across the polymeric chains and their fit to the electron density. The red, orange, yellow and green segments on the lower bar indicate the fraction of residues that contain outliers for ≥ 3 , 2, 1 and 0 types of geometric quality criteria respectively. A grey segment represents the fraction of residues that are not modelled. The numeric value for each fraction is indicated below the corresponding segment, with a dot representing fractions $\leq 5\%$. The upper red bar (where present) indicates the fraction of residues that have poor fit to the electron density. The numeric value is given above the bar.

Mol	Chain	Length	Quality of chain
1	A	612	<p>2% 74% 10% • 15%</p>
1	B	612	<p>2% 74% 12% • 14%</p>

2 Entry composition [i](#)

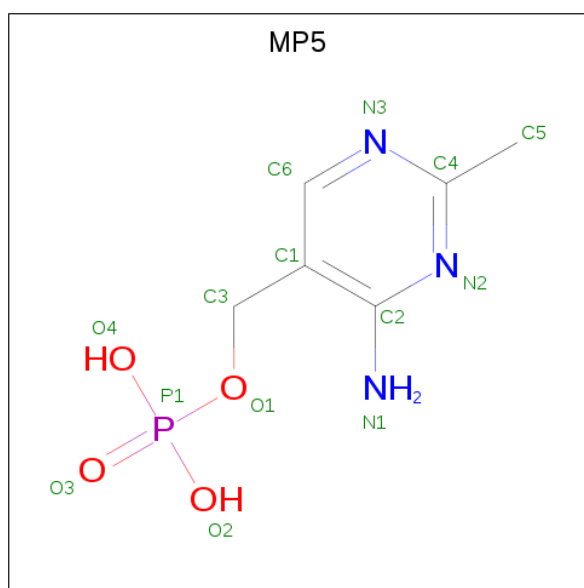
There are 3 unique types of molecules in this entry. The entry contains 8866 atoms, of which 0 are hydrogens and 0 are deuteriums.

In the tables below, the ZeroOcc column contains the number of atoms modelled with zero occupancy, the AltConf column contains the number of residues with at least one atom in alternate conformation and the Trace column contains the number of residues modelled with at most 2 atoms.

- Molecule 1 is a protein called Thiamine biosynthesis protein thiC.

Mol	Chain	Residues	Atoms					ZeroOcc	AltConf	Trace
			Total	C	N	O	S			
1	A	523	Total 4111	C 2601	N 728	O 764	S 18	0	1	0
1	B	526	Total 4105	C 2598	N 727	O 762	S 18	0	0	0

- Molecule 2 is (4-AMINO-2-METHYLPYRIMIDIN-5-YL)METHYL DIHYDROGEN PHOSPHATE (three-letter code: MP5) (formula: C₆H₁₀N₃O₄P).



Mol	Chain	Residues	Atoms					ZeroOcc	AltConf
			Total	C	N	O	P		
2	A	1	Total 14	C 6	N 3	O 4	P 1	0	0
2	B	1	Total 14	C 6	N 3	O 4	P 1	0	0

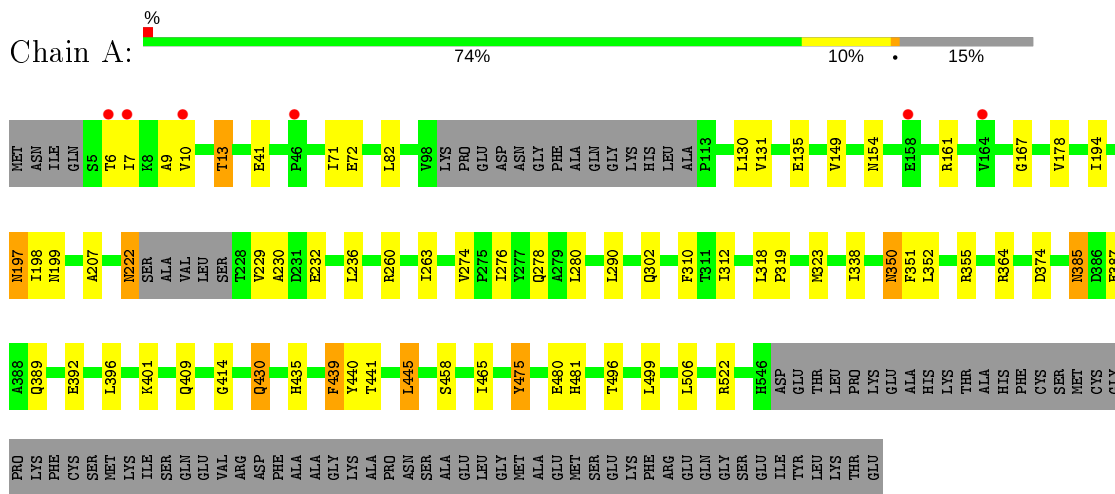
- Molecule 3 is water.

Mol	Chain	Residues	Atoms		ZeroOcc	AltConf
3	A	324	Total 324	O 324	0	0
3	B	298	Total 298	O 298	0	0

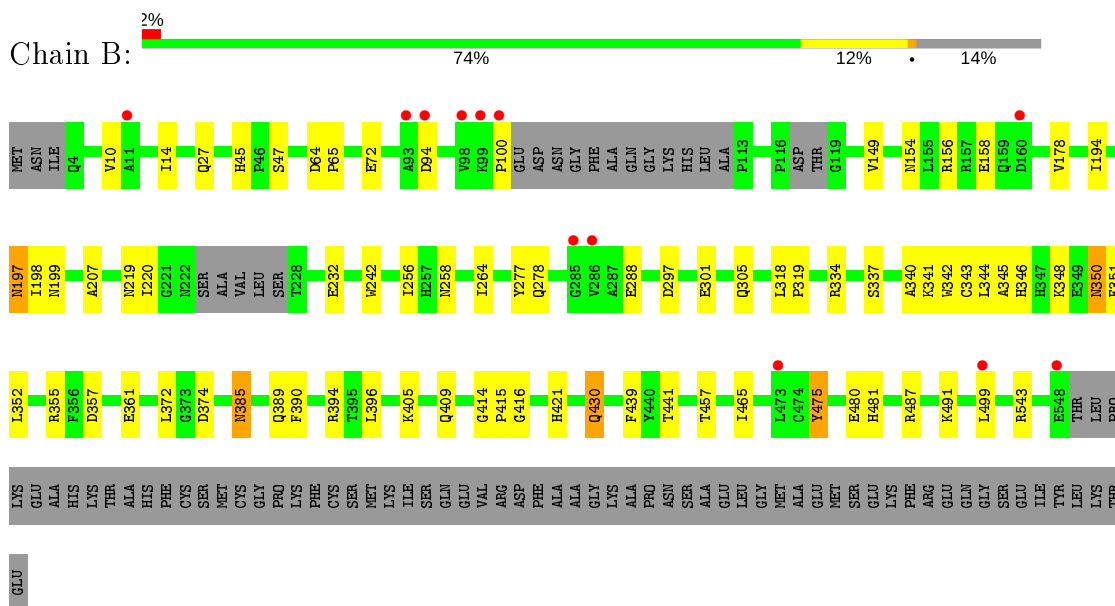
3 Residue-property plots [i](#)

These plots are drawn for all protein, RNA and DNA chains in the entry. The first graphic for a chain summarises the proportions of the various outlier classes displayed in the second graphic. The second graphic shows the sequence view annotated by issues in geometry and electron density. Residues are color-coded according to the number of geometric quality criteria for which they contain at least one outlier: green = 0, yellow = 1, orange = 2 and red = 3 or more. A red dot above a residue indicates a poor fit to the electron density ($RSRZ > 2$). Stretches of 2 or more consecutive residues without any outlier are shown as a green connector. Residues present in the sample, but not in the model, are shown in grey.

- Molecule 1: Thiamine biosynthesis protein thiC



- Molecule 1: Thiamine biosynthesis protein thiC



4 Data and refinement statistics

Property	Value	Source
Space group	P 1 21 1	Depositor
Cell constants a, b, c, α , β , γ	63.02Å 103.19Å 83.11Å 90.00° 102.17° 90.00°	Depositor
Resolution (Å)	41.06 – 2.10 41.06 – 2.10	Depositor EDS
% Data completeness (in resolution range)	92.4 (41.06-2.10) 92.4 (41.06-2.10)	Depositor EDS
R_{merge}	0.14	Depositor
R_{sym}	(Not available)	Depositor
$\langle I/\sigma(I) \rangle$ ¹	2.41 (at 2.10Å)	Xtrriage
Refinement program	PHENIX	Depositor
R, R_{free}	0.152 , 0.227 0.151 , 0.224	Depositor DCC
R_{free} test set	2854 reflections (5.09%)	wwPDB-VP
Wilson B-factor (Å ²)	24.1	Xtrriage
Anisotropy	0.583	Xtrriage
Bulk solvent k_{sol} (e/Å ³), B_{sol} (Å ²)	0.35 , 64.4	EDS
L-test for twinning ²	$\langle L \rangle = 0.50$, $\langle L^2 \rangle = 0.33$	Xtrriage
Estimated twinning fraction	No twinning to report.	Xtrriage
F_o, F_c correlation	0.96	EDS
Total number of atoms	8866	wwPDB-VP
Average B, all atoms (Å ²)	35.0	wwPDB-VP

Xtrriage's analysis on translational NCS is as follows: *The largest off-origin peak in the Patterson function is 4.24% of the height of the origin peak. No significant pseudotranslation is detected.*

¹Intensities estimated from amplitudes.

²Theoretical values of $\langle |L| \rangle$, $\langle L^2 \rangle$ for acentric reflections are 0.5, 0.333 respectively for untwinned datasets, and 0.375, 0.2 for perfectly twinned datasets.

5 Model quality

5.1 Standard geometry

Bond lengths and bond angles in the following residue types are not validated in this section: MP5

The Z score for a bond length (or angle) is the number of standard deviations the observed value is removed from the expected value. A bond length (or angle) with $|Z| > 5$ is considered an outlier worth inspection. RMSZ is the root-mean-square of all Z scores of the bond lengths (or angles).

Mol	Chain	Bond lengths		Bond angles	
		RMSZ	# Z >5	RMSZ	# Z >5
1	A	0.33	0/4209	0.52	0/5715
1	B	0.32	0/4203	0.50	0/5707
All	All	0.33	0/8412	0.51	0/11422

There are no bond length outliers.

There are no bond angle outliers.

There are no chirality outliers.

There are no planarity outliers.

5.2 Too-close contacts

In the following table, the Non-H and H(model) columns list the number of non-hydrogen atoms and hydrogen atoms in the chain respectively. The H(added) column lists the number of hydrogen atoms added and optimized by MolProbity. The Clashes column lists the number of clashes within the asymmetric unit, whereas Symm-Clashes lists symmetry related clashes.

Mol	Chain	Non-H	H(model)	H(added)	Clashes	Symm-Clashes
1	A	4111	0	4040	58	0
1	B	4105	0	4004	52	0
2	A	14	0	8	0	0
2	B	14	0	8	0	0
3	A	324	0	0	3	0
3	B	298	0	0	2	0
All	All	8866	0	8060	108	0

The all-atom clashscore is defined as the number of clashes found per 1000 atoms (including hydrogen atoms). The all-atom clashscore for this structure is 7.

All (108) close contacts within the same asymmetric unit are listed below, sorted by their clash

magnitude.

Atom-1	Atom-2	Interatomic distance (Å)	Clash overlap (Å)
1:A:445:LEU:HD22	1:A:458:SER:HB3	1.55	0.88
1:A:154:ASN:HD21	1:A:178:VAL:H	1.21	0.86
1:A:385:ASN:H	1:A:389:GLN:HE22	1.26	0.84
1:B:194:ILE:H	1:B:409:GLN:HE22	1.25	0.83
1:B:154:ASN:HD21	1:B:178:VAL:H	1.24	0.83
1:A:385:ASN:H	1:A:389:GLN:NE2	1.83	0.77
1:A:197:ASN:HD22	1:A:199:ASN:H	1.32	0.76
1:A:194:ILE:H	1:A:409:GLN:HE22	1.31	0.75
1:B:45:HIS:HD2	1:B:47:SER:H	1.36	0.73
1:B:197:ASN:HD22	1:B:198:ILE:N	1.87	0.73
1:A:197:ASN:ND2	1:A:199:ASN:H	1.89	0.70
1:A:260:ARG:HH22	1:A:278:GLN:HE21	1.41	0.68
1:A:10:VAL:HB	1:A:71:ILE:CD1	2.23	0.67
1:A:260:ARG:HH12	1:A:278:GLN:HE22	1.41	0.67
1:A:260:ARG:HH22	1:A:278:GLN:NE2	1.93	0.67
1:B:100:PRO:HG3	1:B:258:ASN:ND2	2.12	0.65
1:A:10:VAL:HG22	1:A:230:ALA:HA	1.77	0.64
1:B:100:PRO:HG3	1:B:258:ASN:HD21	1.63	0.64
1:A:480:GLU:O	1:A:481:HIS:HB2	1.98	0.63
1:B:351:PHE:O	1:B:355:ARG:HG2	2.00	0.62
1:A:167:GLY:HA2	1:B:421:HIS:CD2	2.34	0.62
1:B:45:HIS:CD2	1:B:47:SER:H	2.16	0.62
1:B:385:ASN:H	1:B:389:GLN:NE2	1.98	0.61
1:B:194:ILE:H	1:B:409:GLN:NE2	1.96	0.61
1:A:149:VAL:HG11	1:A:207:ALA:HB2	1.82	0.60
1:A:445:LEU:HD23	1:A:445:LEU:N	2.17	0.60
1:A:350:ASN:HD22	1:A:350:ASN:C	2.08	0.57
1:B:350:ASN:HD22	1:B:352:LEU:H	1.50	0.57
1:B:350:ASN:ND2	1:B:352:LEU:H	2.04	0.56
1:A:350:ASN:ND2	1:A:352:LEU:H	2.04	0.56
1:B:350:ASN:HD22	1:B:350:ASN:C	2.09	0.55
1:B:430:GLN:HG3	1:B:439:PHE:CD1	2.41	0.55
1:B:385:ASN:HD22	1:B:385:ASN:N	2.04	0.54
1:B:149:VAL:HG11	1:B:207:ALA:HB2	1.88	0.54
1:A:441:THR:HG21	1:A:465:ILE:HD13	1.90	0.54
1:B:385:ASN:H	1:B:389:GLN:HE22	1.56	0.54
1:A:197:ASN:HD22	1:A:198:ILE:N	2.06	0.53
1:A:385:ASN:HD22	1:A:385:ASN:N	2.07	0.53
1:A:154:ASN:HD21	1:A:178:VAL:N	2.00	0.53
1:A:323:MET:SD	1:A:387:GLU:HG2	2.49	0.53
1:A:401:LYS:HE2	1:A:435:HIS:CE1	2.45	0.52

Continued on next page...

Continued from previous page...

Atom-1	Atom-2	Interatomic distance (Å)	Clash overlap (Å)
1:A:82:LEU:HG	3:A:1120:HOH:O	2.09	0.52
1:A:222:ASN:C	1:A:222:ASN:HD22	2.13	0.52
1:A:236:LEU:HD22	1:A:263:ILE:HG23	1.92	0.51
1:B:242:TRP:CD1	1:B:491:LYS:HG3	2.45	0.51
1:B:346:HIS:O	1:B:348:LYS:HG2	2.10	0.51
1:A:499:LEU:HD13	1:B:457:THR:HG22	1.93	0.50
1:B:337:SER:O	1:B:341:LYS:HG3	2.10	0.50
1:A:7:ILE:HD13	1:A:72:GLU:HB2	1.93	0.50
1:A:6:THR:O	1:A:10:VAL:HG23	2.12	0.50
1:A:10:VAL:HB	1:A:71:ILE:HD13	1.94	0.49
1:A:276:ILE:HD11	1:A:290:LEU:HD13	1.94	0.49
1:A:350:ASN:HD22	1:A:352:LEU:H	1.60	0.49
1:B:256:ILE:HD11	1:B:278:GLN:HA	1.94	0.49
1:A:274:VAL:HG12	1:A:276:ILE:HG22	1.94	0.49
1:B:390:PHE:O	1:B:394:ARG:HG3	2.13	0.49
1:B:10:VAL:O	1:B:14:ILE:HG23	2.13	0.49
1:B:374:ASP:OD2	1:B:414:GLY:O	2.31	0.48
1:B:357:ASP:O	1:B:361:GLU:HG3	2.13	0.48
1:B:475:TYR:CD2	1:B:475:TYR:C	2.87	0.48
1:A:522:ARG:HD3	3:A:1105:HOH:O	2.14	0.47
1:A:194:ILE:H	1:A:409:GLN:NE2	2.08	0.47
1:B:220:ILE:HG23	1:B:232:GLU:OE2	2.15	0.47
1:B:340:ALA:O	1:B:344:LEU:HG	2.15	0.46
1:B:277:TYR:CZ	1:B:334:ARG:HD2	2.51	0.46
1:B:480:GLU:O	1:B:481:HIS:HB2	2.15	0.46
1:A:475:TYR:CD2	1:A:475:TYR:C	2.88	0.46
1:A:197:ASN:HD22	1:A:197:ASN:C	2.19	0.45
1:B:197:ASN:HD22	1:B:197:ASN:C	2.15	0.45
1:B:297:ASP:O	1:B:301:GLU:HG3	2.16	0.45
1:B:430:GLN:HG3	1:B:439:PHE:CE1	2.51	0.45
1:B:288:GLU:HG3	1:B:345:ALA:CB	2.46	0.45
1:B:372:LEU:HB3	1:B:396:LEU:HD22	1.99	0.45
1:A:10:VAL:HG22	1:A:230:ALA:CA	2.44	0.45
1:B:543:ARG:HD2	3:B:1014:HOH:O	2.17	0.44
1:A:312:ILE:HG23	1:A:352:LEU:HD13	1.99	0.44
1:A:9:ALA:O	1:A:13:THR:HG22	2.18	0.44
1:B:499:LEU:C	1:B:499:LEU:HD12	2.38	0.44
1:A:350:ASN:HD22	1:A:351:PHE:N	2.15	0.43
1:B:72:GLU:O	1:B:72:GLU:HG2	2.17	0.43
1:A:355:ARG:HD2	3:A:1145:HOH:O	2.17	0.43
1:B:441:THR:HG21	1:B:465:ILE:HD13	1.99	0.43

Continued on next page...

Continued from previous page...

Atom-1	Atom-2	Interatomic distance (Å)	Clash overlap (Å)
1:A:318:LEU:HB3	1:A:319:PRO:CD	2.49	0.43
1:B:415:PRO:CB	1:B:416:GLY:HA3	2.49	0.43
1:A:229:VAL:HG12	1:A:230:ALA:N	2.33	0.42
1:A:130:LEU:HD22	1:A:135:GLU:HB3	2.01	0.42
1:B:264:ILE:HD12	1:B:305:GLN:HG2	2.01	0.42
1:A:10:VAL:HA	1:A:13:THR:CG2	2.50	0.42
1:B:342:TRP:O	1:B:346:HIS:HD2	2.02	0.42
1:B:318:LEU:N	1:B:319:PRO:HD2	2.34	0.42
1:A:392:GLU:O	1:A:396:LEU:HG	2.20	0.42
1:B:219:ASN:O	1:B:220:ILE:HD12	2.18	0.41
1:B:27:GLN:OE1	1:B:156:ARG:HG2	2.19	0.41
1:A:430:GLN:HG3	1:A:439:PHE:CD1	2.55	0.41
1:A:302:GLN:HE21	1:A:310:PHE:HE1	1.69	0.41
1:A:445:LEU:CD2	1:A:445:LEU:N	2.84	0.41
1:B:350:ASN:HD22	1:B:352:LEU:N	2.18	0.41
1:A:385:ASN:N	1:A:389:GLN:NE2	2.61	0.41
1:A:401:LYS:HE2	1:A:435:HIS:NE2	2.36	0.41
1:A:374:ASP:OD2	1:A:414:GLY:O	2.39	0.41
1:B:318:LEU:HD13	1:B:343:CYS:HB3	2.03	0.41
1:A:222:ASN:ND2	1:A:222:ASN:C	2.74	0.41
1:B:64:ASP:HA	1:B:65:PRO:HD3	1.90	0.41
1:A:280:LEU:HD22	1:A:338:ILE:HD13	2.02	0.41
1:A:496:THR:O	1:A:499:LEU:HG	2.21	0.40
1:B:197:ASN:ND2	1:B:199:ASN:H	2.19	0.40
1:B:405:LYS:HE3	3:B:1174:HOH:O	2.20	0.40
1:A:445:LEU:HD23	1:A:445:LEU:H	1.86	0.40

There are no symmetry-related clashes.

5.3 Torsion angles [i](#)

5.3.1 Protein backbone [i](#)

In the following table, the Percentiles column shows the percent Ramachandran outliers of the chain as a percentile score with respect to all X-ray entries followed by that with respect to entries of similar resolution.

The Analysed column shows the number of residues for which the backbone conformation was analysed, and the total number of residues.

Mol	Chain	Analysed	Favoured	Allowed	Outliers	Percentiles	
1	A	518/612 (85%)	496 (96%)	22 (4%)	0	100	100
1	B	518/612 (85%)	508 (98%)	10 (2%)	0	100	100
All	All	1036/1224 (85%)	1004 (97%)	32 (3%)	0	100	100

There are no Ramachandran outliers to report.

5.3.2 Protein sidechains [i](#)

In the following table, the Percentiles column shows the percent sidechain outliers of the chain as a percentile score with respect to all X-ray entries followed by that with respect to entries of similar resolution.

The Analysed column shows the number of residues for which the sidechain conformation was analysed, and the total number of residues.

Mol	Chain	Analysed	Rotameric	Outliers	Percentiles	
1	A	431/503 (86%)	415 (96%)	16 (4%)	34	35
1	B	425/503 (84%)	417 (98%)	8 (2%)	57	63
All	All	856/1006 (85%)	832 (97%)	24 (3%)	43	47

All (24) residues with a non-rotameric sidechain are listed below:

Mol	Chain	Res	Type
1	A	13	THR
1	A	41	GLU
1	A	131	VAL
1	A	161	ARG
1	A	197	ASN
1	A	222	ASN
1	A	232	GLU
1	A	350	ASN
1	A	364	ARG
1	A	385	ASN
1	A	430	GLN
1	A	439	PHE
1	A	440	TYR
1	A	445	LEU
1	A	475	TYR
1	A	506	LEU
1	B	94	ASP
1	B	158	GLU

Continued on next page...

Continued from previous page...

Mol	Chain	Res	Type
1	B	197	ASN
1	B	350	ASN
1	B	385	ASN
1	B	430	GLN
1	B	475	TYR
1	B	487	ARG

Some sidechains can be flipped to improve hydrogen bonding and reduce clashes. All (28) such sidechains are listed below:

Mol	Chain	Res	Type
1	A	97	GLN
1	A	154	ASN
1	A	159	GLN
1	A	197	ASN
1	A	222	ASN
1	A	255	ASN
1	A	278	GLN
1	A	302	GLN
1	A	350	ASN
1	A	385	ASN
1	A	389	GLN
1	A	409	GLN
1	A	421	HIS
1	A	426	ASN
1	A	430	GLN
1	B	45	HIS
1	B	154	ASN
1	B	159	GLN
1	B	197	ASN
1	B	257	HIS
1	B	258	ASN
1	B	302	GLN
1	B	350	ASN
1	B	385	ASN
1	B	389	GLN
1	B	409	GLN
1	B	426	ASN
1	B	430	GLN

5.3.3 RNA [i](#)

There are no RNA molecules in this entry.

5.4 Non-standard residues in protein, DNA, RNA chains [i](#)

There are no non-standard protein/DNA/RNA residues in this entry.

5.5 Carbohydrates [i](#)

There are no carbohydrates in this entry.

5.6 Ligand geometry [i](#)

2 ligands are modelled in this entry.

In the following table, the Counts columns list the number of bonds (or angles) for which Mogul statistics could be retrieved, the number of bonds (or angles) that are observed in the model and the number of bonds (or angles) that are defined in the Chemical Component Dictionary. The Link column lists molecule types, if any, to which the group is linked. The Z score for a bond length (or angle) is the number of standard deviations the observed value is removed from the expected value. A bond length (or angle) with $|Z| > 2$ is considered an outlier worth inspection. RMSZ is the root-mean-square of all Z scores of the bond lengths (or angles).

Mol	Type	Chain	Res	Link	Bond lengths			Bond angles		
					Counts	RMSZ	# Z > 2	Counts	RMSZ	# Z > 2
2	MP5	B	1002	-	14,14,14	1.47	2 (14%)	19,20,20	2.18	8 (42%)
2	MP5	A	1001	-	14,14,14	1.43	2 (14%)	19,20,20	1.74	7 (36%)

In the following table, the Chirals column lists the number of chiral outliers, the number of chiral centers analysed, the number of these observed in the model and the number defined in the Chemical Component Dictionary. Similar counts are reported in the Torsion and Rings columns. '-' means no outliers of that kind were identified.

Mol	Type	Chain	Res	Link	Chirals	Torsions	Rings
2	MP5	B	1002	-	-	0/6/6/6	0/1/1/1
2	MP5	A	1001	-	-	1/6/6/6	0/1/1/1

All (4) bond length outliers are listed below:

Mol	Chain	Res	Type	Atoms	Z	Observed(Å)	Ideal(Å)
2	A	1001	MP5	P1-O3	3.67	1.62	1.50

Continued on next page...

Continued from previous page...

Mol	Chain	Res	Type	Atoms	Z	Observed(Å)	Ideal(Å)
2	B	1002	MP5	P1-O3	3.55	1.62	1.50
2	B	1002	MP5	P1-O4	2.46	1.64	1.54
2	A	1001	MP5	C1-C2	-2.13	1.39	1.42

All (15) bond angle outliers are listed below:

Mol	Chain	Res	Type	Atoms	Z	Observed(°)	Ideal(°)
2	B	1002	MP5	O2-P1-O1	4.10	117.64	106.73
2	B	1002	MP5	O1-C3-C1	4.07	117.10	109.35
2	B	1002	MP5	C6-N3-C4	3.11	121.26	115.96
2	B	1002	MP5	N3-C4-N2	-2.99	120.39	125.54
2	A	1001	MP5	C6-N3-C4	2.90	120.89	115.96
2	A	1001	MP5	N3-C4-N2	-2.82	120.69	125.54
2	A	1001	MP5	O2-P1-O1	2.66	113.82	106.73
2	B	1002	MP5	C5-C4-N3	2.66	120.07	117.14
2	B	1002	MP5	O1-P1-O3	-2.48	99.51	106.47
2	A	1001	MP5	C5-C4-N3	2.29	119.65	117.14
2	B	1002	MP5	C1-C6-N3	-2.26	120.05	123.82
2	A	1001	MP5	N1-C2-N2	2.15	120.07	117.03
2	A	1001	MP5	C1-C6-N3	-2.12	120.29	123.82
2	B	1002	MP5	N1-C2-N2	2.11	120.01	117.03
2	A	1001	MP5	C3-C1-C2	2.10	124.09	121.63

There are no chirality outliers.

All (1) torsion outliers are listed below:

Mol	Chain	Res	Type	Atoms
2	A	1001	MP5	C1-C3-O1-P1

There are no ring outliers.

No monomer is involved in short contacts.

5.7 Other polymers [i](#)

There are no such residues in this entry.

5.8 Polymer linkage issues [i](#)

There are no chain breaks in this entry.

6 Fit of model and data [i](#)

6.1 Protein, DNA and RNA chains [i](#)

In the following table, the column labelled ‘#RSRZ> 2’ contains the number (and percentage) of RSRZ outliers, followed by percent RSRZ outliers for the chain as percentile scores relative to all X-ray entries and entries of similar resolution. The OWAB column contains the minimum, median, 95th percentile and maximum values of the occupancy-weighted average B-factor per residue. The column labelled ‘Q< 0.9’ lists the number of (and percentage) of residues with an average occupancy less than 0.9.

Mol	Chain	Analysed	<RSRZ>	#RSRZ>2	OWAB(Å ²)	Q<0.9
1	A	523/612 (85%)	-0.28	6 (1%) 80 84	15, 27, 66, 103	0
1	B	526/612 (85%)	-0.22	12 (2%) 60 65	16, 31, 75, 112	0
All	All	1049/1224 (85%)	-0.25	18 (1%) 70 74	15, 29, 69, 112	0

All (18) RSRZ outliers are listed below:

Mol	Chain	Res	Type	RSRZ
1	B	99	LYS	5.6
1	B	100	PRO	4.3
1	B	98	VAL	4.1
1	A	10	VAL	3.6
1	A	7	ILE	3.5
1	A	164	VAL	3.1
1	B	285	GLY	3.0
1	B	548	GLU	2.9
1	A	6	THR	2.7
1	B	94	ASP	2.5
1	B	286	VAL	2.5
1	B	11	ALA	2.5
1	B	473	LEU	2.4
1	B	93	ALA	2.3
1	A	46	PRO	2.2
1	B	160	ASP	2.2
1	A	158	GLU	2.2
1	B	499	LEU	2.0

6.2 Non-standard residues in protein, DNA, RNA chains [i](#)

There are no non-standard protein/DNA/RNA residues in this entry.

6.3 Carbohydrates [i](#)

There are no carbohydrates in this entry.

6.4 Ligands [i](#)

In the following table, the Atoms column lists the number of modelled atoms in the group and the number defined in the chemical component dictionary. The B-factors column lists the minimum, median, 95th percentile and maximum values of B factors of atoms in the group. The column labelled 'Q< 0.9' lists the number of atoms with occupancy less than 0.9.

Mol	Type	Chain	Res	Atoms	RSCC	RSR	B-factors(\AA^2)	Q<0.9
2	MP5	A	1001	14/14	0.94	0.20	33,80,146,168	0
2	MP5	B	1002	14/14	0.95	0.19	34,66,139,151	0

6.5 Other polymers [i](#)

There are no such residues in this entry.