



# wwPDB X-ray Structure Validation Summary Report ⓘ

Oct 3, 2023 – 10:28 PM EDT

PDB ID : 6EDQ  
Title : Crystal Structure of the Light-Gated Anion Channelrhodopsin GtACR1  
Authors : Li, H.; Huang, C.Y.; Wang, M.; Zheng, L.; Spudich, J.L.  
Deposited on : 2018-08-10  
Resolution : 2.90 Å(reported)

This is a wwPDB X-ray Structure Validation Summary Report for a publicly released PDB entry.

We welcome your comments at [validation@mail.wwpdb.org](mailto:validation@mail.wwpdb.org)

A user guide is available at

<https://www.wwpdb.org/validation/2017/XrayValidationReportHelp>

with specific help available everywhere you see the ⓘ symbol.

The types of validation reports are described at

<http://www.wwpdb.org/validation/2017/FAQs#types>.

---

The following versions of software and data (see [references ⓘ](#)) were used in the production of this report:

MolProbity : 4.02b-467  
Mogul : 1.8.5 (274361), CSD as541be (2020)  
Xtriage (Phenix) : 1.13  
EDS : 2.35.1  
buster-report : 1.1.7 (2018)  
Percentile statistics : 20191225.v01 (using entries in the PDB archive December 25th 2019)  
Refmac : 5.8.0158  
CCP4 : 7.0.044 (Gargrove)  
Ideal geometry (proteins) : Engh & Huber (2001)  
Ideal geometry (DNA, RNA) : Parkinson et al. (1996)  
Validation Pipeline (wwPDB-VP) : 2.35.1

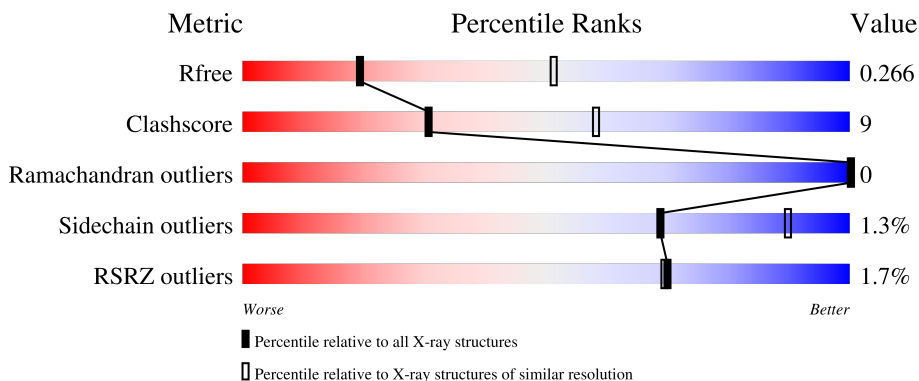
# 1 Overall quality at a glance

The following experimental techniques were used to determine the structure:

*X-RAY DIFFRACTION*

The reported resolution of this entry is 2.90 Å.

Percentile scores (ranging between 0-100) for global validation metrics of the entry are shown in the following graphic. The table shows the number of entries on which the scores are based.



Metric	Whole archive (#Entries)	Similar resolution (#Entries, resolution range(Å))
$R_{free}$	130704	1957 (2.90-2.90)
Clashscore	141614	2172 (2.90-2.90)
Ramachandran outliers	138981	2115 (2.90-2.90)
Sidechain outliers	138945	2117 (2.90-2.90)
RSRZ outliers	127900	1906 (2.90-2.90)

The table below summarises the geometric issues observed across the polymeric chains and their fit to the electron density. The red, orange, yellow and green segments of the lower bar indicate the fraction of residues that contain outliers for  $\geq 3$ , 2, 1 and 0 types of geometric quality criteria respectively. A grey segment represents the fraction of residues that are not modelled. The numeric value for each fraction is indicated below the corresponding segment, with a dot representing fractions  $\leq 5\%$ . The upper red bar (where present) indicates the fraction of residues that have poor fit to the electron density. The numeric value is given above the bar.

Mol	Chain	Length	Quality of chain
1	A	303	 2% 69% 18% • 12%
1	B	303	 2% 71% 19% • 9%

The following table lists non-polymeric compounds, carbohydrate monomers and non-standard residues in protein, DNA, RNA chains that are outliers for geometric or electron-density-fit criteria:

Mol	Type	Chain	Res	Chirality	Geometry	Clashes	Electron density
2	OLC	A	404	-	-	-	X
2	OLC	A	405	-	-	-	X
3	GOL	A	406	-	-	-	X
3	GOL	B	404	-	-	-	X

## 2 Entry composition [i](#)

There are 4 unique types of molecules in this entry. The entry contains 4568 atoms, of which 0 are hydrogens and 0 are deuteriums.

In the tables below, the ZeroOcc column contains the number of atoms modelled with zero occupancy, the AltConf column contains the number of residues with at least one atom in alternate conformation and the Trace column contains the number of residues modelled with at most 2 atoms.

- Molecule 1 is a protein called Anion channelrhodopsin 1.

Mol	Chain	Residues	Atoms					ZeroOcc	AltConf	Trace
			Total	C	N	O	S			
1	A	267	2129	1414	329	363	23	0	0	0
1	B	275	2198	1457	338	380	23	0	0	0

There are 16 discrepancies between the modelled and reference sequences:

Chain	Residue	Modelled	Actual	Comment	Reference
A	296	HIS	-	expression tag	UNP L1J207
A	297	HIS	-	expression tag	UNP L1J207
A	298	HIS	-	expression tag	UNP L1J207
A	299	HIS	-	expression tag	UNP L1J207
A	300	HIS	-	expression tag	UNP L1J207
A	301	HIS	-	expression tag	UNP L1J207
A	302	HIS	-	expression tag	UNP L1J207
A	303	HIS	-	expression tag	UNP L1J207
B	296	HIS	-	expression tag	UNP L1J207
B	297	HIS	-	expression tag	UNP L1J207
B	298	HIS	-	expression tag	UNP L1J207
B	299	HIS	-	expression tag	UNP L1J207
B	300	HIS	-	expression tag	UNP L1J207
B	301	HIS	-	expression tag	UNP L1J207
B	302	HIS	-	expression tag	UNP L1J207
B	303	HIS	-	expression tag	UNP L1J207

- Molecule 2 is (2R)-2,3-dihydroxypropyl (9Z)-octadec-9-enoate (three-letter code: OLC) (formula: C<sub>21</sub>H<sub>40</sub>O<sub>4</sub>).



Mol	Chain	Residues	Atoms			ZeroOcc	AltConf
2	A	1	Total	C	O	0	0
			25	21	4		
2	A	1	Total	C	O	0	0
			25	21	4		
2	A	1	Total	C	O	0	0
			18	14	4		
2	A	1	Total	C	O	0	0
			25	21	4		
2	A	1	Total	C	O	0	0
			25	21	4		
2	B	1	Total	C	O	0	0
			25	21	4		
2	B	1	Total	C	O	0	0
			25	21	4		
2	B	1	Total	C	O	0	0
			21	17	4		

- Molecule 3 is GLYCEROL (three-letter code: GOL) (formula: C<sub>3</sub>H<sub>8</sub>O<sub>3</sub>).



Mol	Chain	Residues	Atoms	ZeroOcc	AltConf
3	A	1	Total C O 6 3 3	0	0
3	A	1	Total C O 6 3 3	0	0
3	B	1	Total C O 6 3 3	0	0
3	B	1	Total C O 6 3 3	0	0
3	B	1	Total C O 6 3 3	0	0

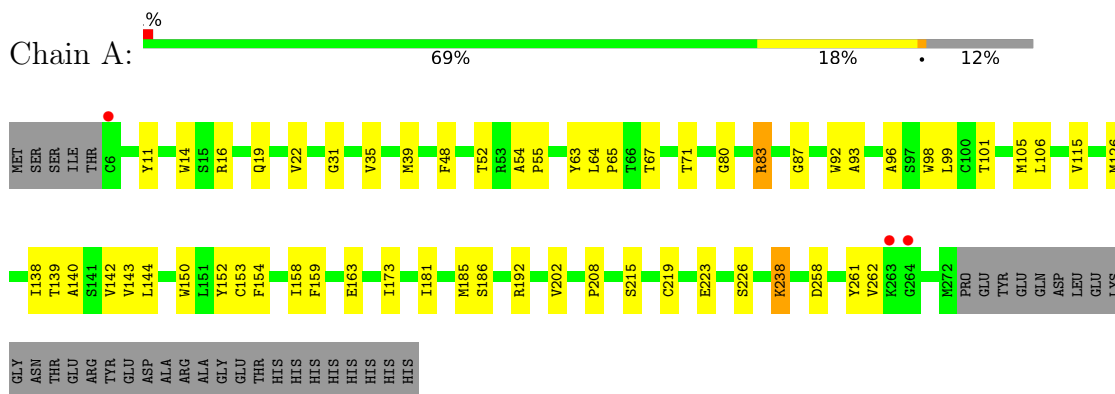
- Molecule 4 is water.

Mol	Chain	Residues	Atoms	ZeroOcc	AltConf
4	A	13	Total O 13 13	0	0
4	B	9	Total O 9 9	0	0

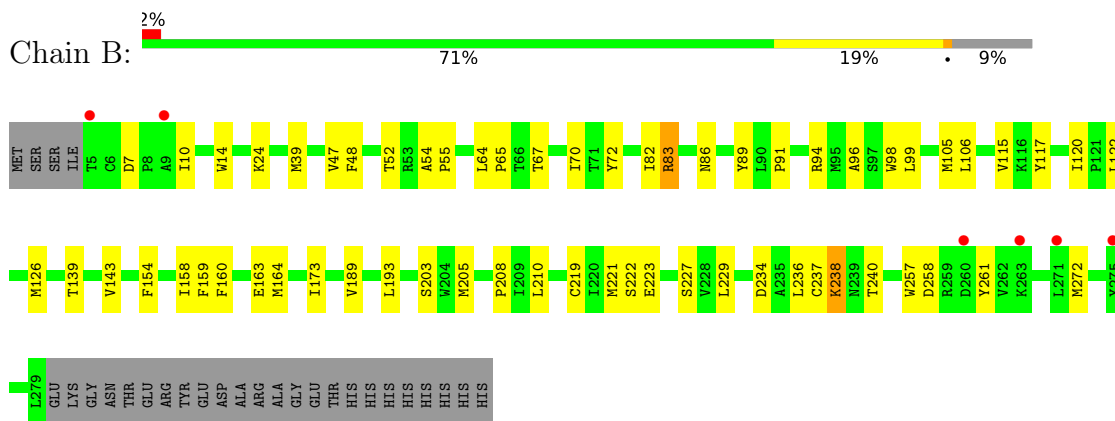
### 3 Residue-property plots [i](#)

These plots are drawn for all protein, RNA, DNA and oligosaccharide chains in the entry. The first graphic for a chain summarises the proportions of the various outlier classes displayed in the second graphic. The second graphic shows the sequence view annotated by issues in geometry and electron density. Residues are color-coded according to the number of geometric quality criteria for which they contain at least one outlier: green = 0, yellow = 1, orange = 2 and red = 3 or more. A red dot above a residue indicates a poor fit to the electron density ( $RSRZ > 2$ ). Stretches of 2 or more consecutive residues without any outlier are shown as a green connector. Residues present in the sample, but not in the model, are shown in grey.

- Molecule 1: Anion channelrhodopsin 1



- Molecule 1: Anion channelrhodopsin 1



## 4 Data and refinement statistics

Property	Value	Source
Space group	P 21 21 2	Depositor
Cell constants a, b, c, $\alpha$ , $\beta$ , $\gamma$	77.79Å 149.55Å 62.41Å 90.00° 90.00° 90.00°	Depositor
Resolution (Å)	47.91 – 2.90 48.68 – 2.90	Depositor EDS
% Data completeness (in resolution range)	99.8 (47.91-2.90) 99.9 (48.68-2.90)	Depositor EDS
$R_{merge}$	(Not available)	Depositor
$R_{sym}$	(Not available)	Depositor
$\langle I/\sigma(I) \rangle$ <sup>1</sup>	1.38 (at 2.91Å)	Xtrriage
Refinement program	PHENIX (1.14_3211)	Depositor
R, $R_{free}$	0.230 , 0.267 0.231 , 0.266	Depositor DCC
$R_{free}$ test set	838 reflections (5.00%)	wwPDB-VP
Wilson B-factor (Å <sup>2</sup> )	65.7	Xtrriage
Anisotropy	0.176	Xtrriage
Bulk solvent $k_{sol}$ (e/Å <sup>3</sup> ), $B_{sol}$ (Å <sup>2</sup> )	0.28 , 30.4	EDS
L-test for twinning <sup>2</sup>	$\langle  L  \rangle = 0.48$ , $\langle L^2 \rangle = 0.31$	Xtrriage
Estimated twinning fraction	No twinning to report.	Xtrriage
$F_o, F_c$ correlation	0.93	EDS
Total number of atoms	4568	wwPDB-VP
Average B, all atoms (Å <sup>2</sup> )	64.0	wwPDB-VP

Xtrriage's analysis on translational NCS is as follows: *The analyses of the Patterson function reveals a significant off-origin peak that is 44.43 % of the origin peak, indicating pseudo-translational symmetry. The chance of finding a peak of this or larger height randomly in a structure without pseudo-translational symmetry is equal to 1.5276e-04. The detected translational NCS is most likely also responsible for the elevated intensity ratio.*

<sup>1</sup>Intensities estimated from amplitudes.

<sup>2</sup>Theoretical values of  $\langle |L| \rangle$ ,  $\langle L^2 \rangle$  for acentric reflections are 0.5, 0.333 respectively for untwinned datasets, and 0.375, 0.2 for perfectly twinned datasets.



## 5 Model quality

### 5.1 Standard geometry

Bond lengths and bond angles in the following residue types are not validated in this section: OLC, GOL, LYR

The Z score for a bond length (or angle) is the number of standard deviations the observed value is removed from the expected value. A bond length (or angle) with  $|Z| > 5$  is considered an outlier worth inspection. RMSZ is the root-mean-square of all Z scores of the bond lengths (or angles).

Mol	Chain	Bond lengths		Bond angles	
		RMSZ	# Z  >5	RMSZ	# Z  >5
1	A	0.32	0/2158	0.50	0/2941
1	B	0.32	0/2229	0.51	0/3039
All	All	0.32	0/4387	0.50	0/5980

There are no bond length outliers.

There are no bond angle outliers.

There are no chirality outliers.

There are no planarity outliers.

### 5.2 Too-close contacts

In the following table, the Non-H and H(model) columns list the number of non-hydrogen atoms and hydrogen atoms in the chain respectively. The H(added) column lists the number of hydrogen atoms added and optimized by MolProbity. The Clashes column lists the number of clashes within the asymmetric unit, whereas Symm-Clashes lists symmetry-related clashes.

Mol	Chain	Non-H	H(model)	H(added)	Clashes	Symm-Clashes
1	A	2129	0	2164	41	0
1	B	2198	0	2222	40	0
2	A	118	0	183	14	0
2	B	71	0	109	2	0
3	A	12	0	16	0	0
3	B	18	0	24	0	0
4	A	13	0	0	0	0
4	B	9	0	0	0	0
All	All	4568	0	4718	85	0

The all-atom clashscore is defined as the number of clashes found per 1000 atoms (including hydrogen atoms). The all-atom clashscore for this structure is 9.

The worst 5 of 85 close contacts within the same asymmetric unit are listed below, sorted by their clash magnitude.

Atom-1	Atom-2	Interatomic distance (Å)	Clash overlap (Å)
1:A:215:SER:HA	1:A:219:CYS:HB3	1.76	0.67
1:B:117:TYR:HB2	1:B:122:LEU:HD11	1.77	0.66
1:B:7:ASP:HB3	1:B:10:ILE:HG12	1.78	0.66
1:B:54:ALA:HB3	1:B:55:PRO:HD3	1.78	0.66
1:A:153:CYS:SG	2:A:403:OLC:H4A	2.36	0.66

There are no symmetry-related clashes.

### 5.3 Torsion angles [i](#)

#### 5.3.1 Protein backbone [i](#)

In the following table, the Percentiles column shows the percent Ramachandran outliers of the chain as a percentile score with respect to all X-ray entries followed by that with respect to entries of similar resolution.

The Analysed column shows the number of residues for which the backbone conformation was analysed, and the total number of residues.

Mol	Chain	Analysed	Favoured	Allowed	Outliers	Percentiles	
1	A	264/303 (87%)	257 (97%)	7 (3%)	0	100	100
1	B	272/303 (90%)	266 (98%)	6 (2%)	0	100	100
All	All	536/606 (88%)	523 (98%)	13 (2%)	0	100	100

There are no Ramachandran outliers to report.

#### 5.3.2 Protein sidechains [i](#)

In the following table, the Percentiles column shows the percent sidechain outliers of the chain as a percentile score with respect to all X-ray entries followed by that with respect to entries of similar resolution.

The Analysed column shows the number of residues for which the sidechain conformation was analysed, and the total number of residues.

Mol	Chain	Analysed	Rotameric	Outliers	Percentiles	
1	A	231/263 (88%)	228 (99%)	3 (1%)	69	90

*Continued on next page...*

Continued from previous page...

Mol	Chain	Analysed	Rotameric	Outliers	Percentiles	
1	B	239/263 (91%)	236 (99%)	3 (1%)	69	90
All	All	470/526 (89%)	464 (99%)	6 (1%)	69	90

5 of 6 residues with a non-rotameric sidechain are listed below:

Mol	Chain	Res	Type
1	B	39	MET
1	B	83	ARG
1	B	219	CYS
1	A	83	ARG
1	A	39	MET

Sometimes sidechains can be flipped to improve hydrogen bonding and reduce clashes. There are no such sidechains identified.

### 5.3.3 RNA [i](#)

There are no RNA molecules in this entry.

## 5.4 Non-standard residues in protein, DNA, RNA chains [i](#)

2 non-standard protein/DNA/RNA residues are modelled in this entry.

In the following table, the Counts columns list the number of bonds (or angles) for which Mogul statistics could be retrieved, the number of bonds (or angles) that are observed in the model and the number of bonds (or angles) that are defined in the Chemical Component Dictionary. The Link column lists molecule types, if any, to which the group is linked. The Z score for a bond length (or angle) is the number of standard deviations the observed value is removed from the expected value. A bond length (or angle) with  $|Z| > 2$  is considered an outlier worth inspection. RMSZ is the root-mean-square of all Z scores of the bond lengths (or angles).

Mol	Type	Chain	Res	Link	Bond lengths			Bond angles		
					Counts	RMSZ	# Z  > 2	Counts	RMSZ	# Z  > 2
1	LYR	B	238	1	27,29,30	3.96	10 (37%)	30,37,39	2.29	12 (40%)
1	LYR	A	238	1	27,29,30	3.89	10 (37%)	30,37,39	2.47	12 (40%)

In the following table, the Chirals column lists the number of chiral outliers, the number of chiral centers analysed, the number of these observed in the model and the number defined in the Chemical Component Dictionary. Similar counts are reported in the Torsion and Rings columns. '-' means no outliers of that kind were identified.

Mol	Type	Chain	Res	Link	Chirals	Torsions	Rings
1	LYR	B	238	1	-	6/22/40/42	0/1/1/1
1	LYR	A	238	1	-	6/22/40/42	0/1/1/1

The worst 5 of 20 bond length outliers are listed below:

Mol	Chain	Res	Type	Atoms	Z	Observed(Å)	Ideal(Å)
1	B	238	LYR	C12-C11	15.20	1.60	1.34
1	A	238	LYR	C12-C11	14.68	1.59	1.34
1	B	238	LYR	C16-C15	-6.58	1.36	1.52
1	A	238	LYR	C16-C15	-6.40	1.36	1.52
1	A	238	LYR	C17-C11	-5.57	1.46	1.53

The worst 5 of 24 bond angle outliers are listed below:

Mol	Chain	Res	Type	Atoms	Z	Observed(°)	Ideal(°)
1	A	238	LYR	C1-NZ-CE	-6.11	103.65	113.33
1	B	238	LYR	C1-NZ-CE	-5.77	104.19	113.33
1	A	238	LYR	C13-C12-C11	-5.31	118.57	124.53
1	A	238	LYR	C1-C2-C3	-4.43	118.47	126.97
1	A	238	LYR	C6-C7-C80	-3.99	121.62	127.31

There are no chirality outliers.

5 of 12 torsion outliers are listed below:

Mol	Chain	Res	Type	Atoms
1	A	238	LYR	N-CA-CB-CG
1	A	238	LYR	C-CA-CB-CG
1	B	238	LYR	N-CA-CB-CG
1	B	238	LYR	C-CA-CB-CG
1	A	238	LYR	CG-CD-CE-NZ

There are no ring outliers.

2 monomers are involved in 10 short contacts:

Mol	Chain	Res	Type	Clashes	Symm-Clashes
1	B	238	LYR	5	0
1	A	238	LYR	5	0

## 5.5 Carbohydrates [i](#)

There are no monosaccharides in this entry.

## 5.6 Ligand geometry

13 ligands are modelled in this entry.

In the following table, the Counts columns list the number of bonds (or angles) for which Mogul statistics could be retrieved, the number of bonds (or angles) that are observed in the model and the number of bonds (or angles) that are defined in the Chemical Component Dictionary. The Link column lists molecule types, if any, to which the group is linked. The Z score for a bond length (or angle) is the number of standard deviations the observed value is removed from the expected value. A bond length (or angle) with  $|Z| > 2$  is considered an outlier worth inspection. RMSZ is the root-mean-square of all Z scores of the bond lengths (or angles).

Mol	Type	Chain	Res	Link	Bond lengths			Bond angles		
					Counts	RMSZ	# Z  > 2	Counts	RMSZ	# Z  > 2
2	OLC	B	401	-	24,24,24	0.75	1 (4%)	25,25,25	0.86	1 (4%)
2	OLC	A	404	-	24,24,24	0.68	1 (4%)	25,25,25	0.96	1 (4%)
3	GOL	A	407	-	5,5,5	0.33	0	5,5,5	0.19	0
2	OLC	B	403	-	20,20,24	0.80	1 (5%)	21,21,25	0.97	1 (4%)
2	OLC	A	405	-	24,24,24	0.73	1 (4%)	25,25,25	0.85	1 (4%)
3	GOL	A	406	-	5,5,5	0.35	0	5,5,5	0.31	0
2	OLC	A	402	-	24,24,24	0.74	1 (4%)	25,25,25	0.87	1 (4%)
2	OLC	B	402	-	24,24,24	0.70	1 (4%)	25,25,25	0.97	1 (4%)
3	GOL	B	406	-	5,5,5	0.33	0	5,5,5	0.27	0
3	GOL	B	404	-	5,5,5	0.31	0	5,5,5	0.29	0
2	OLC	A	401	-	24,24,24	0.76	1 (4%)	25,25,25	0.94	1 (4%)
3	GOL	B	405	-	5,5,5	0.36	0	5,5,5	0.19	0
2	OLC	A	403	-	17,17,24	0.83	1 (5%)	18,18,25	1.19	1 (5%)

In the following table, the Chirals column lists the number of chiral outliers, the number of chiral centers analysed, the number of these observed in the model and the number defined in the Chemical Component Dictionary. Similar counts are reported in the Torsion and Rings columns. '-' means no outliers of that kind were identified.

Mol	Type	Chain	Res	Link	Chirals	Torsions	Rings
2	OLC	B	401	-	-	9/24/24/24	-
2	OLC	A	404	-	-	10/24/24/24	-
3	GOL	A	407	-	-	2/4/4/4	-
2	OLC	B	403	-	-	8/20/20/24	-
2	OLC	A	405	-	-	7/24/24/24	-
3	GOL	A	406	-	-	2/4/4/4	-
2	OLC	A	402	-	-	12/24/24/24	-
2	OLC	B	402	-	-	9/24/24/24	-

*Continued on next page...*

*Continued from previous page...*

Mol	Type	Chain	Res	Link	Chirals	Torsions	Rings
3	GOL	B	406	-	-	0/4/4/4	-
3	GOL	B	404	-	-	0/4/4/4	-
2	OLC	A	401	-	-	7/24/24/24	-
3	GOL	B	405	-	-	2/4/4/4	-
2	OLC	A	403	-	-	7/17/17/24	-

The worst 5 of 8 bond length outliers are listed below:

Mol	Chain	Res	Type	Atoms	Z	Observed(Å)	Ideal(Å)
2	A	401	OLC	O20-C1	3.23	1.42	1.33
2	B	401	OLC	O20-C1	3.13	1.42	1.33
2	B	403	OLC	O20-C1	3.09	1.42	1.33
2	A	405	OLC	O20-C1	2.94	1.41	1.33
2	A	402	OLC	O20-C1	2.87	1.41	1.33

The worst 5 of 8 bond angle outliers are listed below:

Mol	Chain	Res	Type	Atoms	Z	Observed(°)	Ideal(°)
2	A	401	OLC	O20-C1-C2	3.25	122.11	111.91
2	A	402	OLC	O20-C1-C2	2.97	121.22	111.91
2	B	402	OLC	O20-C1-C2	2.95	121.18	111.91
2	A	403	OLC	O20-C1-C2	2.95	121.16	111.91
2	B	403	OLC	O20-C1-C2	2.89	120.98	111.91

There are no chirality outliers.

5 of 75 torsion outliers are listed below:

Mol	Chain	Res	Type	Atoms
3	A	406	GOL	C1-C2-C3-O3
3	A	406	GOL	O2-C2-C3-O3
3	A	407	GOL	C1-C2-C3-O3
2	A	404	OLC	O19-C1-O20-C21
2	A	404	OLC	C2-C1-O20-C21

There are no ring outliers.

6 monomers are involved in 16 short contacts:

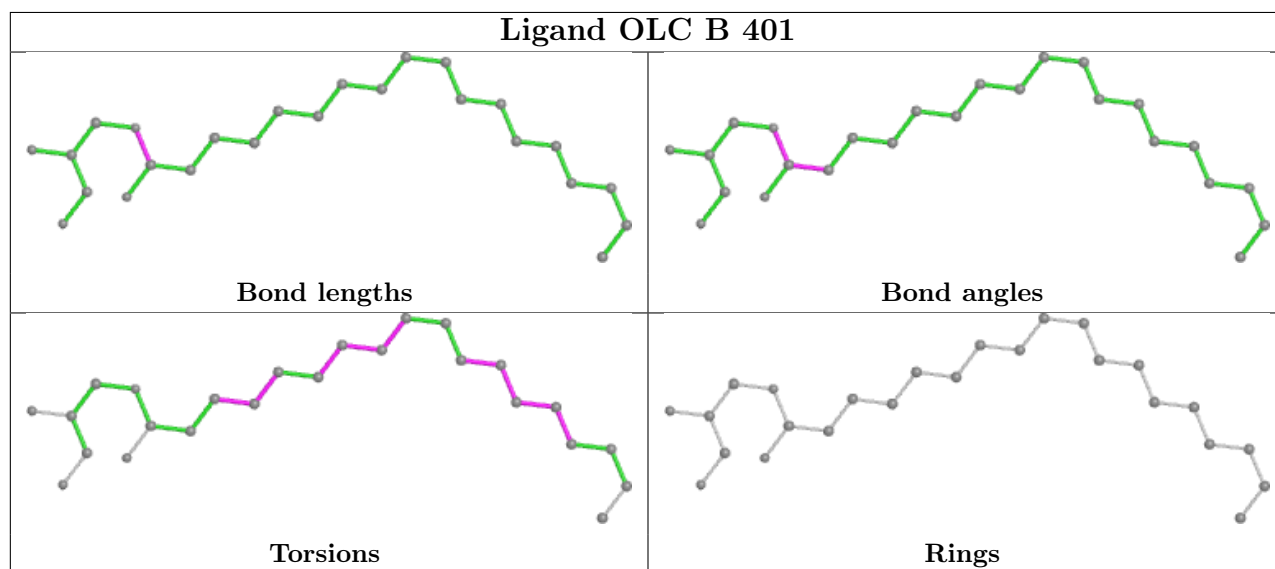
Mol	Chain	Res	Type	Clashes	Symm-Clashes
2	B	401	OLC	2	0
2	A	404	OLC	3	0

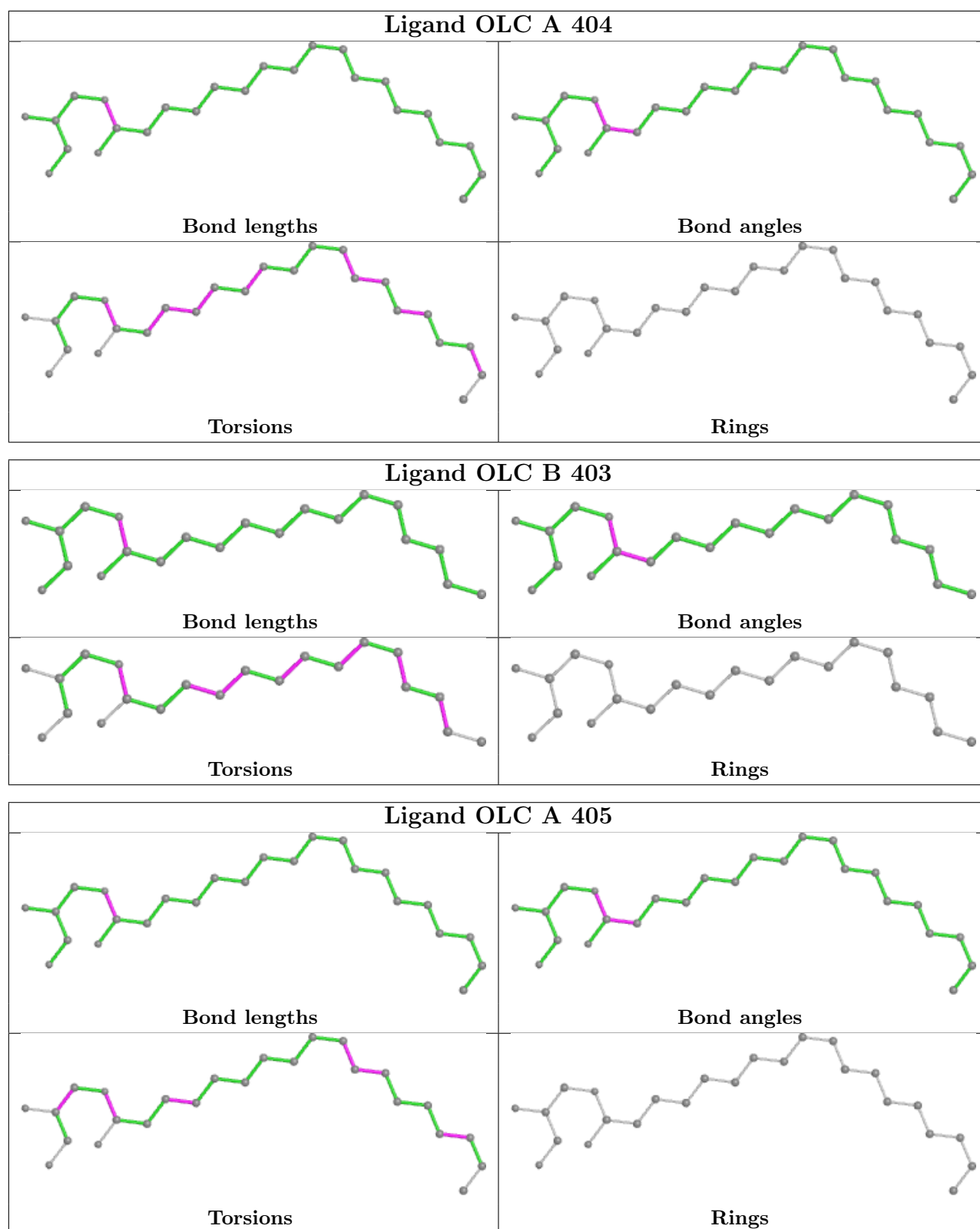
*Continued on next page...*

*Continued from previous page...*

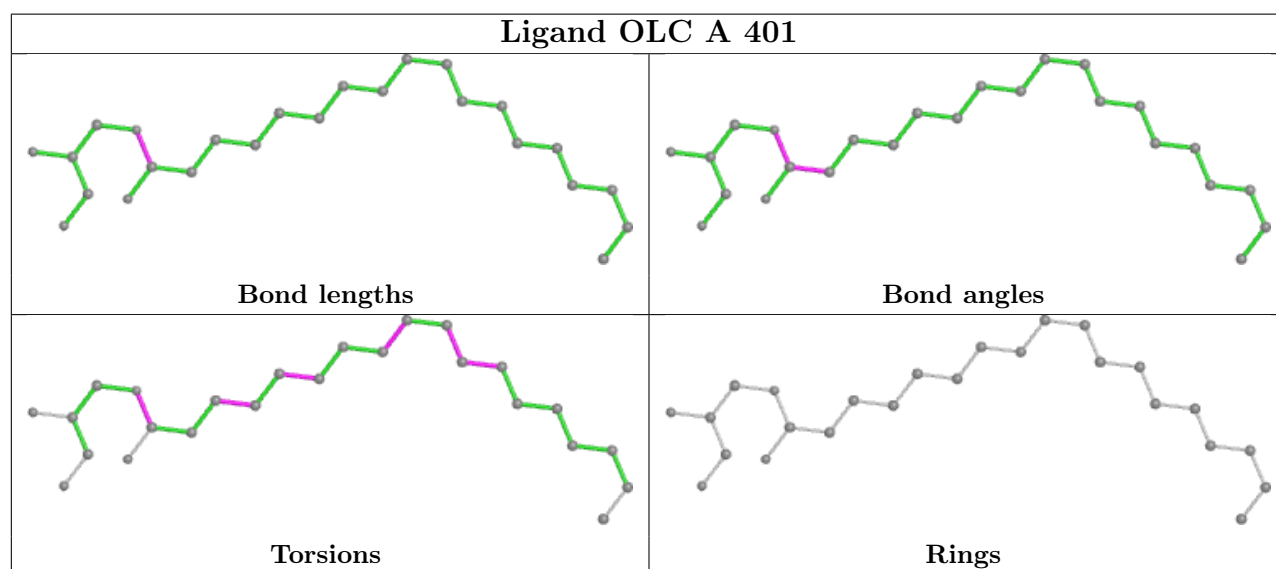
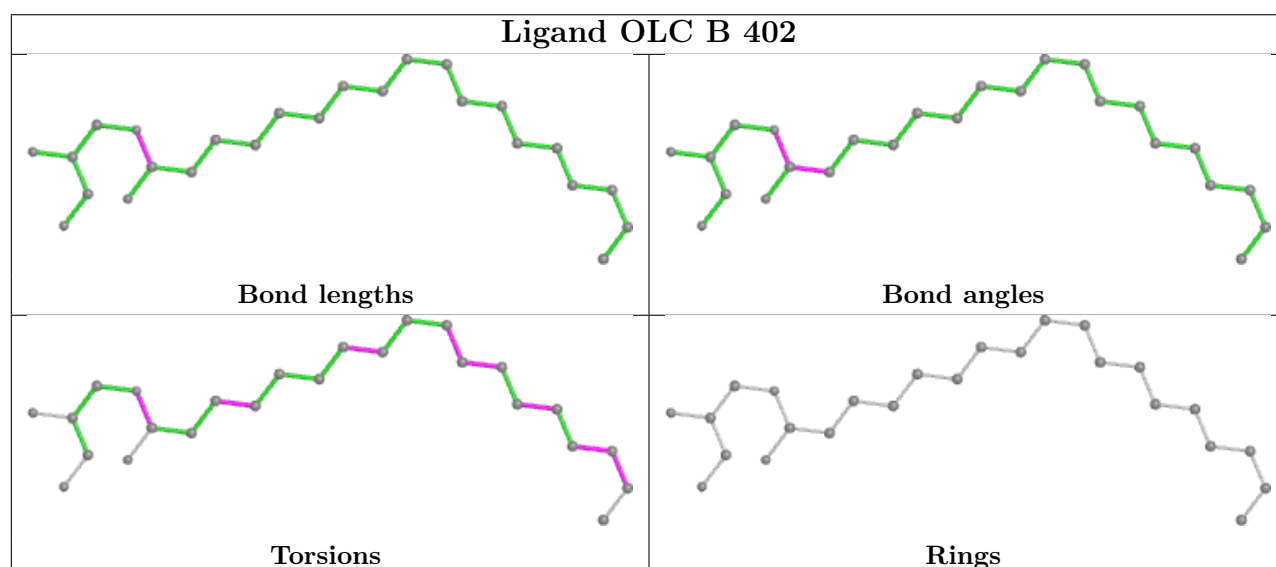
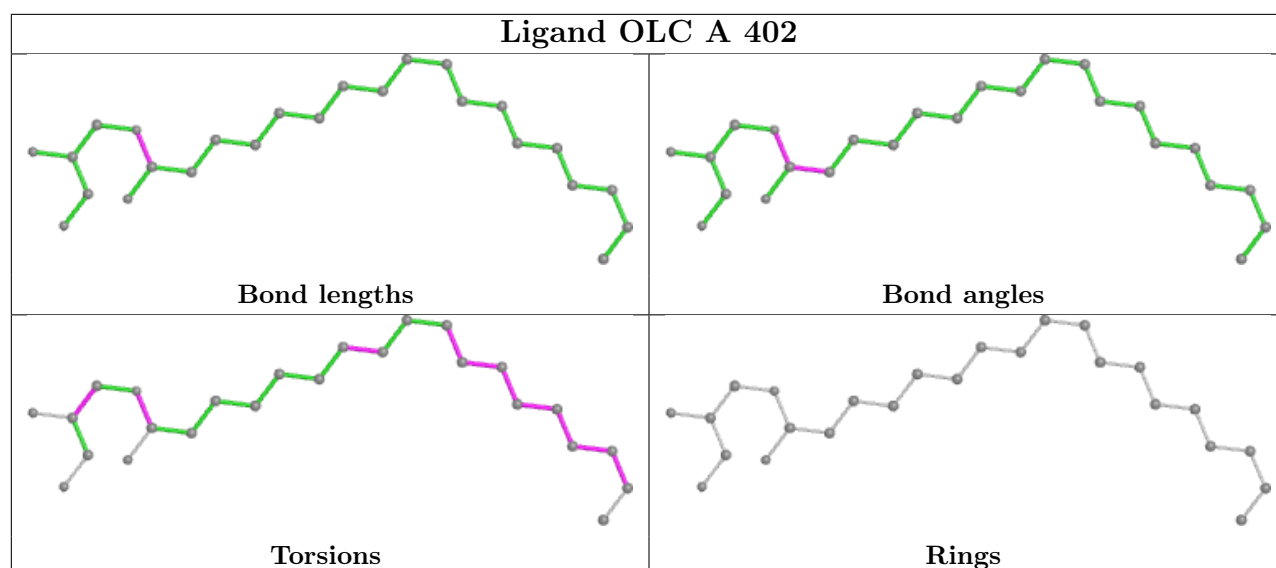
Mol	Chain	Res	Type	Clashes	Symm-Clashes
2	A	405	OLC	5	0
2	A	402	OLC	3	0
2	A	401	OLC	2	0
2	A	403	OLC	6	0

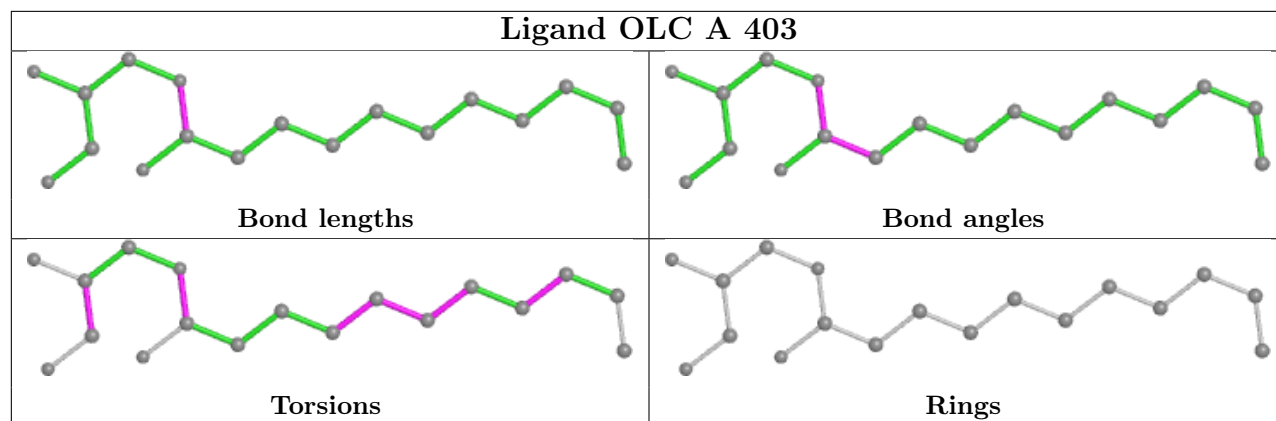
The following is a two-dimensional graphical depiction of Mogul quality analysis of bond lengths, bond angles, torsion angles, and ring geometry for all instances of the Ligand of Interest. In addition, ligands with molecular weight > 250 and outliers as shown on the validation Tables will also be included. For torsion angles, if less than 5% of the Mogul distribution of torsion angles is within 10 degrees of the torsion angle in question, then that torsion angle is considered an outlier. Any bond that is central to one or more torsion angles identified as an outlier by Mogul will be highlighted in the graph. For rings, the root-mean-square deviation (RMSD) between the ring in question and similar rings identified by Mogul is calculated over all ring torsion angles. If the average RMSD is greater than 60 degrees and the minimal RMSD between the ring in question and any Mogul-identified rings is also greater than 60 degrees, then that ring is considered an outlier. The outliers are highlighted in purple. The color gray indicates Mogul did not find sufficient equivalents in the CSD to analyse the geometry.











## 5.7 Other polymers [i](#)

There are no such residues in this entry.

## 5.8 Polymer linkage issues [i](#)

There are no chain breaks in this entry.

## 6 Fit of model and data [i](#)

### 6.1 Protein, DNA and RNA chains [i](#)

In the following table, the column labelled ‘#RSRZ> 2’ contains the number (and percentage) of RSRZ outliers, followed by percent RSRZ outliers for the chain as percentile scores relative to all X-ray entries and entries of similar resolution. The OWAB column contains the minimum, median, 95<sup>th</sup> percentile and maximum values of the occupancy-weighted average B-factor per residue. The column labelled ‘Q< 0.9’ lists the number of (and percentage) of residues with an average occupancy less than 0.9.

Mol	Chain	Analysed	<RSRZ>	#RSRZ>2	OWAB(Å <sup>2</sup> )	Q<0.9
1	A	266/303 (87%)	-0.41	3 (1%) 80 80	41, 59, 100, 154	0
1	B	274/303 (90%)	-0.34	6 (2%) 62 59	42, 58, 94, 124	0
All	All	540/606 (89%)	-0.38	9 (1%) 70 69	41, 59, 99, 154	0

The worst 5 of 9 RSRZ outliers are listed below:

Mol	Chain	Res	Type	RSRZ
1	A	6	CYS	3.3
1	A	264	GLY	3.1
1	B	271	LEU	2.9
1	B	263	LYS	2.5
1	B	260	ASP	2.5

### 6.2 Non-standard residues in protein, DNA, RNA chains [i](#)

In the following table, the Atoms column lists the number of modelled atoms in the group and the number defined in the chemical component dictionary. The B-factors column lists the minimum, median, 95<sup>th</sup> percentile and maximum values of B factors of atoms in the group. The column labelled ‘Q< 0.9’ lists the number of atoms with occupancy less than 0.9.

Mol	Type	Chain	Res	Atoms	RSCC	RSR	B-factors(Å <sup>2</sup> )	Q<0.9
1	LYR	B	238	29/30	0.94	0.22	52,57,64,66	0
1	LYR	A	238	29/30	0.95	0.20	40,44,54,57	0

### 6.3 Carbohydrates [i](#)

There are no monosaccharides in this entry.

## 6.4 Ligands

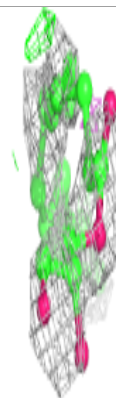
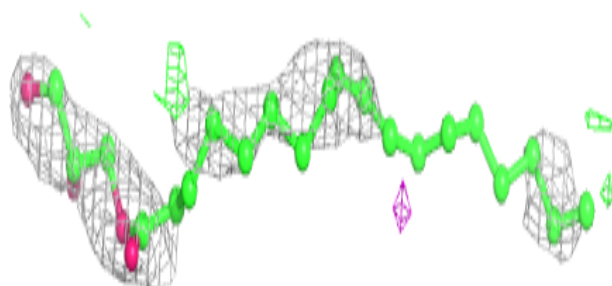
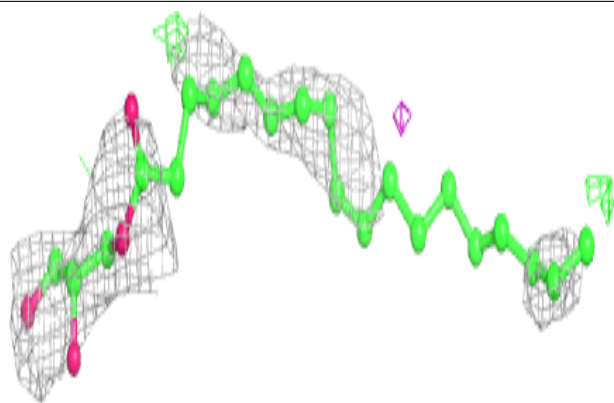
In the following table, the Atoms column lists the number of modelled atoms in the group and the number defined in the chemical component dictionary. The B-factors column lists the minimum, median, 95<sup>th</sup> percentile and maximum values of B factors of atoms in the group. The column labelled 'Q< 0.9' lists the number of atoms with occupancy less than 0.9.

Mol	Type	Chain	Res	Atoms	RSCC	RSR	B-factors(Å <sup>2</sup> )	Q<0.9
3	GOL	A	406	6/6	0.61	0.45	92,96,100,108	0
2	OLC	A	404	25/25	0.73	0.43	92,100,108,108	0
3	GOL	B	404	6/6	0.75	0.44	67,71,73,77	0
2	OLC	A	405	25/25	0.76	0.42	71,82,101,108	0
2	OLC	A	401	25/25	0.78	0.38	61,67,81,83	0
2	OLC	B	402	25/25	0.81	0.42	73,83,89,92	0
3	GOL	B	406	6/6	0.81	0.42	78,79,80,86	0
3	GOL	B	405	6/6	0.82	0.27	54,57,64,74	0
2	OLC	A	402	25/25	0.82	0.35	69,75,89,89	0
2	OLC	B	401	25/25	0.86	0.26	47,64,84,85	0
2	OLC	A	403	18/25	0.87	0.29	74,85,89,89	0
2	OLC	B	403	21/25	0.87	0.33	61,73,89,94	0
3	GOL	A	407	6/6	0.92	0.19	66,70,72,78	0

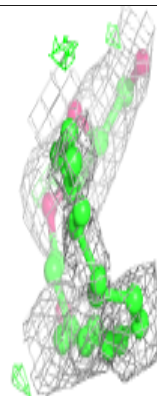
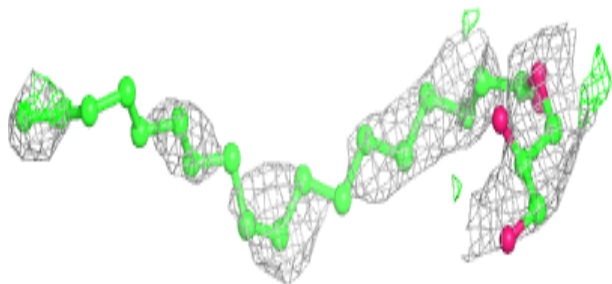
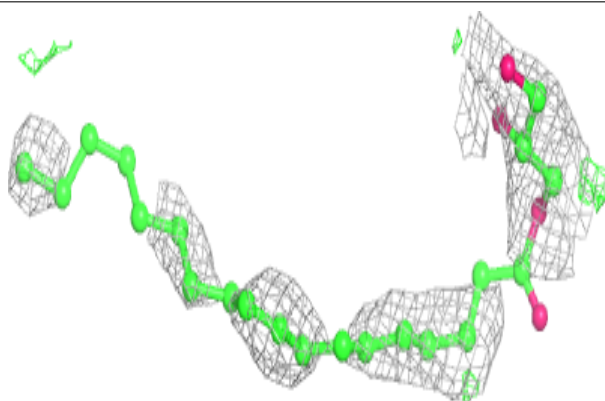
The following is a graphical depiction of the model fit to experimental electron density of all instances of the Ligand of Interest. In addition, ligands with molecular weight > 250 and outliers as shown on the geometry validation Tables will also be included. Each fit is shown from different orientation to approximate a three-dimensional view.

**Electron density around OLC A 404:**

$2mF_o-DF_c$  (at 0.7 rmsd) in gray  
 $mF_o-DF_c$  (at 3 rmsd) in purple (negative)  
and green (positive)

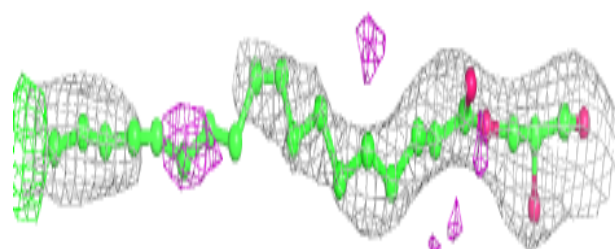
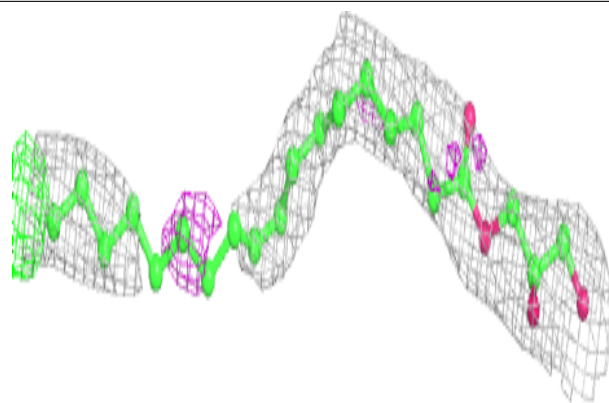
**Electron density around OLC A 405:**

$2mF_o-DF_c$  (at 0.7 rmsd) in gray  
 $mF_o-DF_c$  (at 3 rmsd) in purple (negative)  
and green (positive)

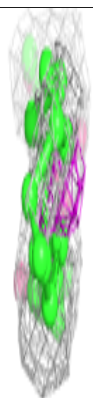
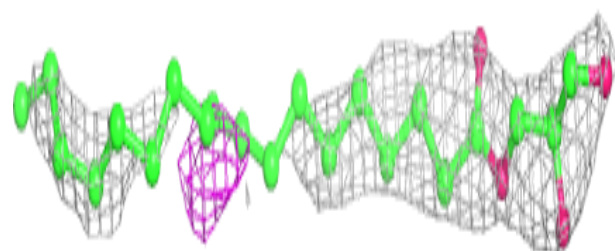
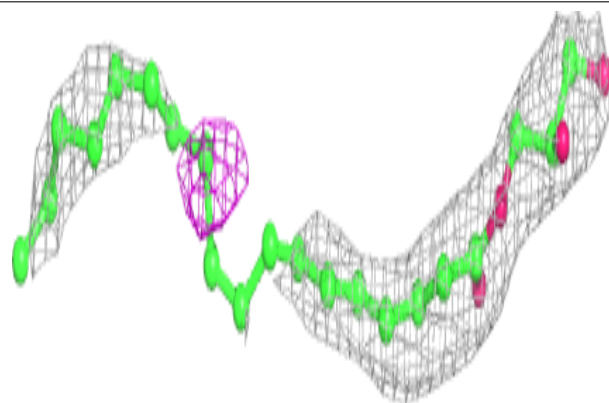


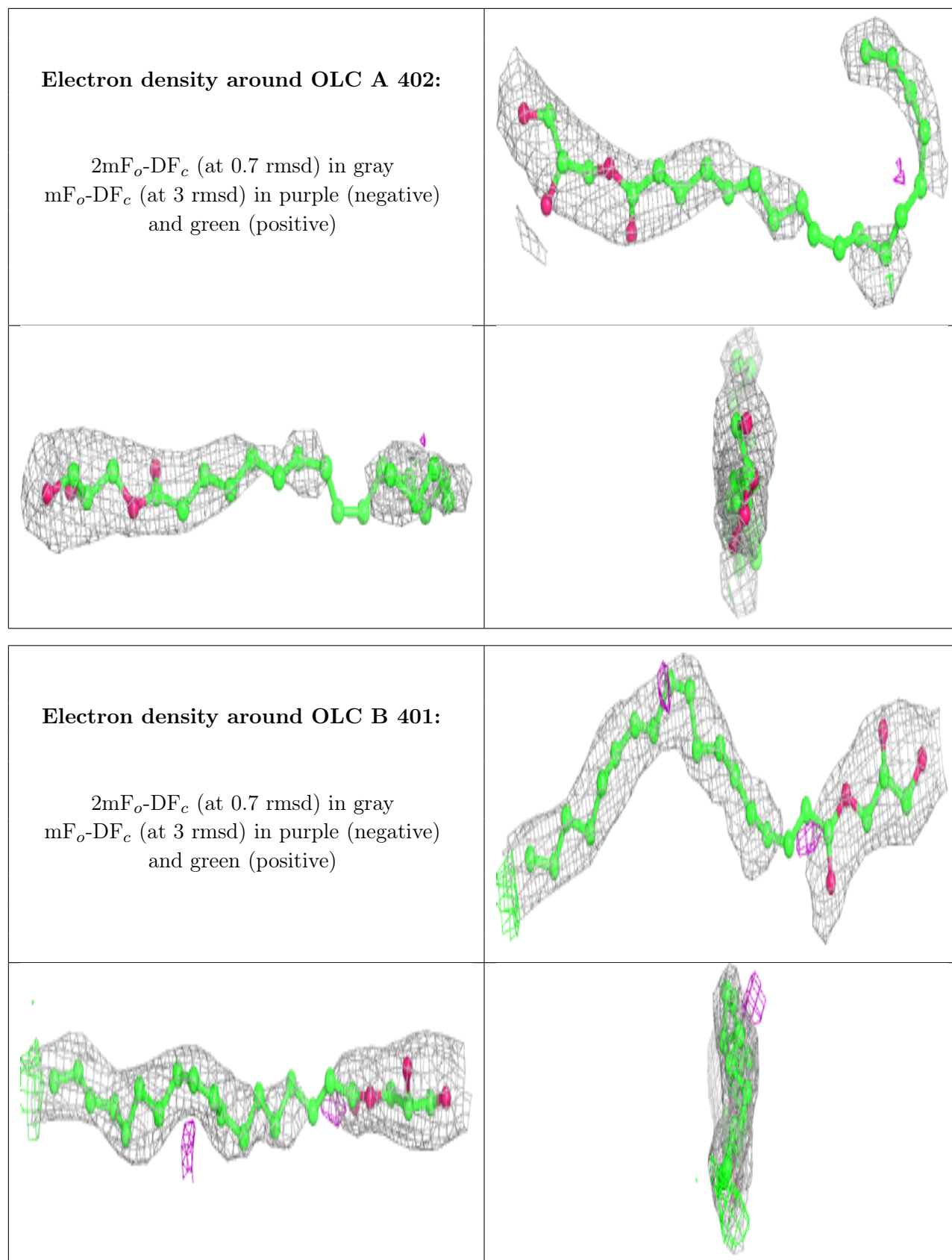
**Electron density around OLC A 401:**

$2mF_o-DF_c$  (at 0.7 rmsd) in gray  
 $mF_o-DF_c$  (at 3 rmsd) in purple (negative)  
and green (positive)

**Electron density around OLC B 402:**

$2mF_o-DF_c$  (at 0.7 rmsd) in gray  
 $mF_o-DF_c$  (at 3 rmsd) in purple (negative)  
and green (positive)

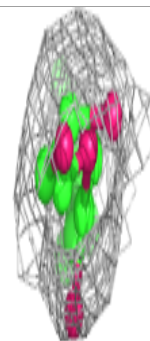
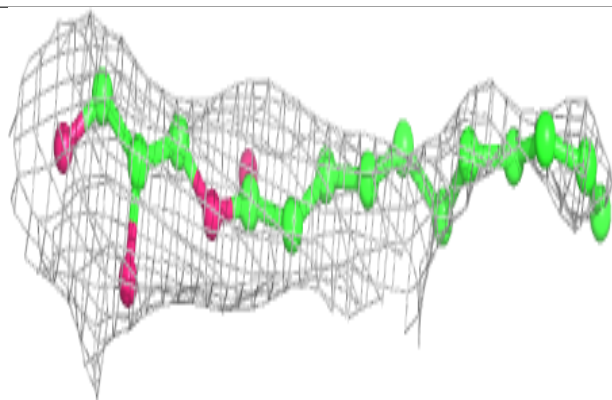
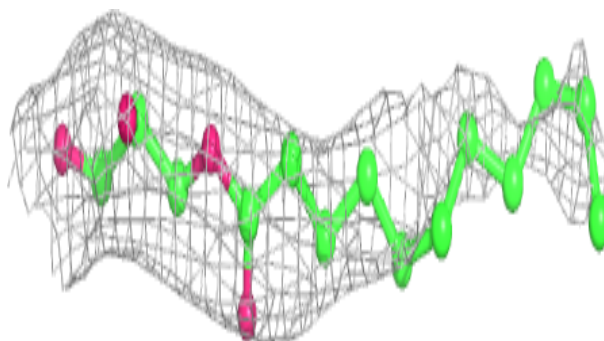




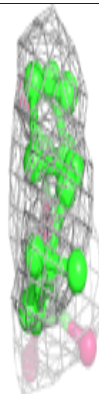
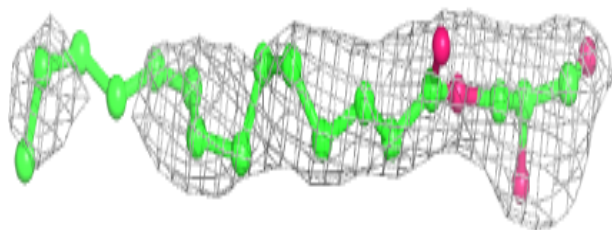
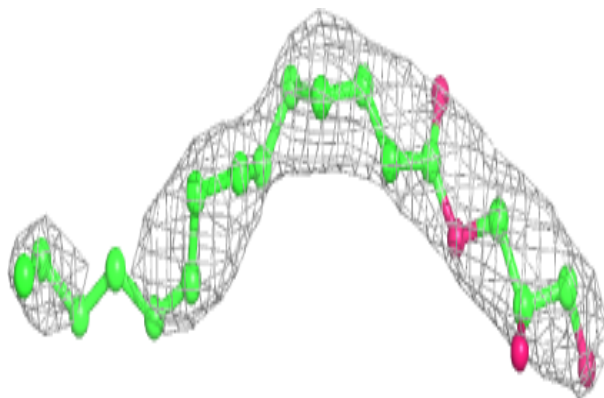


**Electron density around OLC A 403:**

$2mF_o-DF_c$  (at 0.7 rmsd) in gray  
 $mF_o-DF_c$  (at 3 rmsd) in purple (negative)  
and green (positive)

**Electron density around OLC B 403:**

$2mF_o-DF_c$  (at 0.7 rmsd) in gray  
 $mF_o-DF_c$  (at 3 rmsd) in purple (negative)  
and green (positive)





## 6.5 Other polymers [i](#)

There are no such residues in this entry.