



Full wwPDB X-ray Structure Validation Report ⓘ

Oct 15, 2023 – 07:13 PM EDT

PDB ID : 8EA8
Title : NKG2D complexed with inhibitor 4a
Authors : Thompson, A.A.; Grant, J.C.; Karpowich, N.K.; Sharma, S.
Deposited on : 2022-08-28
Resolution : 1.77 Å(reported)

This is a Full wwPDB X-ray Structure Validation Report for a publicly released PDB entry.

We welcome your comments at validation@mail.wwpdb.org

A user guide is available at

<https://www.wwpdb.org/validation/2017/XrayValidationReportHelp>

with specific help available everywhere you see the ⓘ symbol.

The types of validation reports are described at

<http://www.wwpdb.org/validation/2017/FAQs#types>.

The following versions of software and data (see [references ⓘ](#)) were used in the production of this report:

MolProbity : 4.02b-467
Mogul : 1.8.5 (274361), CSD as541be (2020)
Xtriage (Phenix) : 1.13
EDS : 2.36
buster-report : 1.1.7 (2018)
Percentile statistics : 20191225.v01 (using entries in the PDB archive December 25th 2019)
Refmac : 5.8.0158
CCP4 : 7.0.044 (Gargrove)
Ideal geometry (proteins) : Engh & Huber (2001)
Ideal geometry (DNA, RNA) : Parkinson et al. (1996)
Validation Pipeline (wwPDB-VP) : 2.36

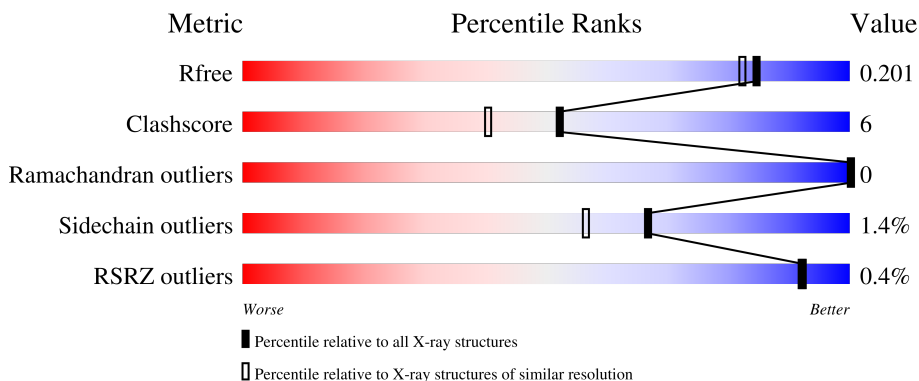
1 Overall quality at a glance

The following experimental techniques were used to determine the structure:

X-RAY DIFFRACTION


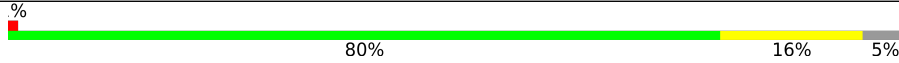
The reported resolution of this entry is 1.77 Å.

Percentile scores (ranging between 0-100) for global validation metrics of the entry are shown in the following graphic. The table shows the number of entries on which the scores are based.



Metric	Whole archive (#Entries)	Similar resolution (#Entries, resolution range(Å))
R_{free}	130704	9185 (1.80-1.76)
Clashscore	141614	10184 (1.80-1.76)
Ramachandran outliers	138981	10051 (1.80-1.76)
Sidechain outliers	138945	10050 (1.80-1.76)
RSRZ outliers	127900	9032 (1.80-1.76)

The table below summarises the geometric issues observed across the polymeric chains and their fit to the electron density. The red, orange, yellow and green segments of the lower bar indicate the fraction of residues that contain outliers for ≥ 3 , 2, 1 and 0 types of geometric quality criteria respectively. A grey segment represents the fraction of residues that are not modelled. The numeric value for each fraction is indicated below the corresponding segment, with a dot representing fractions $\leq 5\%$. The upper red bar (where present) indicates the fraction of residues that have poor fit to the electron density. The numeric value is given above the bar.

Mol	Chain	Length	Quality of chain
1	A	129	 82% 11% 7%
1	B	129	 % 80% 16% 5%

2 Entry composition

There are 5 unique types of molecules in this entry. The entry contains 2240 atoms, of which 0 are hydrogens and 0 are deuteriums.

In the tables below, the ZeroOcc column contains the number of atoms modelled with zero occupancy, the AltConf column contains the number of residues with at least one atom in alternate conformation and the Trace column contains the number of residues modelled with at most 2 atoms.

- Molecule 1 is a protein called NKG2-D type II integral membrane protein.

Mol	Chain	Residues	Atoms					ZeroOcc	AltConf	Trace
			Total	C	N	O	S			
1	B	123	987	629	156	190	12	0	1	0
1	A	120	985	628	156	189	12	0	1	0

There are 8 discrepancies between the modelled and reference sequences:

Chain	Residue	Modelled	Actual	Comment	Reference
B	88	MET	-	initiating methionine	UNP P26718
B	89	GLY	-	expression tag	UNP P26718
B	117	GLU	SER	engineered mutation	UNP P26718
B	173	SER	ILE	engineered mutation	UNP P26718
A	88	MET	-	initiating methionine	UNP P26718
A	89	GLY	-	expression tag	UNP P26718
A	117	GLU	SER	engineered mutation	UNP P26718
A	173	SER	ILE	engineered mutation	UNP P26718

- Molecule 2 is TRIETHYLENE GLYCOL (three-letter code: PGE) (formula: C₆H₁₄O₄).



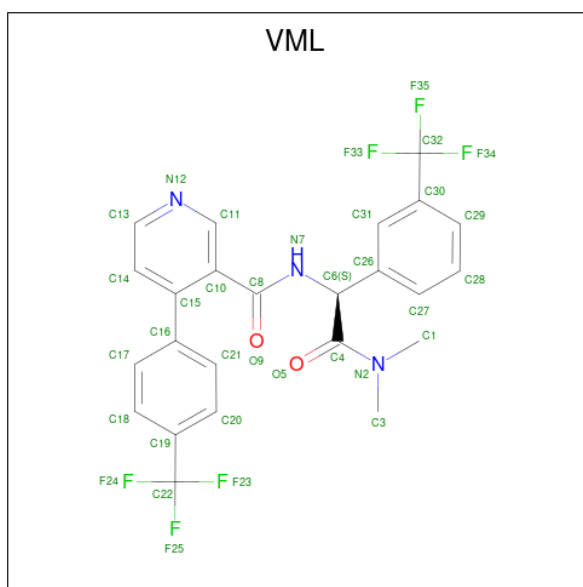
Mol	Chain	Residues	Atoms			ZeroOcc	AltConf
2	B	1	Total	C	O	0	0
			10	6	4		
2	B	1	Total	C	O	0	0
			10	6	4		
2	B	1	Total	C	O	0	0
			10	6	4		
2	A	1	Total	C	O	0	0
			10	6	4		
2	A	1	Total	C	O	0	0
			10	6	4		
2	A	1	Total	C	O	0	0
			10	6	4		

- Molecule 3 is DI(HYDROXYETHYL)ETHER (three-letter code: PEG) (formula: C₄H₁₀O₃).



Mol	Chain	Residues	Atoms			ZeroOcc	AltConf
3	B	1	Total	C	O	0	0
			7	4	3		
3	A	1	Total	C	O	0	0
			7	4	3		

- Molecule 4 is N-{(1S)-2-(dimethylamino)-2-oxo-1-[3-(trifluoromethyl)phenyl]ethyl}-4-[4-(trifluoromethyl)phenyl]pyridine-3-carboxamide (three-letter code: VML) (formula: $C_{24}H_{19}F_6N_3O_2$) (labeled as "Ligand of Interest" by depositor).



Mol	Chain	Residues	Atoms					ZeroOcc	AltConf
4	B	1	Total	C	F	N	O	0	0
			35	24	6	3	2		

- Molecule 5 is water.

Mol	Chain	Residues	Atoms		ZeroOcc	AltConf
5	B	62	Total 62	O 62	0	0
5	A	97	Total 97	O 97	0	0

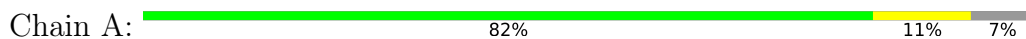
3 Residue-property plots [i](#)

These plots are drawn for all protein, RNA, DNA and oligosaccharide chains in the entry. The first graphic for a chain summarises the proportions of the various outlier classes displayed in the second graphic. The second graphic shows the sequence view annotated by issues in geometry and electron density. Residues are color-coded according to the number of geometric quality criteria for which they contain at least one outlier: green = 0, yellow = 1, orange = 2 and red = 3 or more. A red dot above a residue indicates a poor fit to the electron density ($RSRZ > 2$). Stretches of 2 or more consecutive residues without any outlier are shown as a green connector. Residues present in the sample, but not in the model, are shown in grey.

- Molecule 1: NKG2-D type II integral membrane protein



- Molecule 1: NKG2-D type II integral membrane protein



4 Data and refinement statistics

Property	Value	Source
Space group	C 1 2 1	Depositor
Cell constants a, b, c, α , β , γ	100.09Å 43.67Å 72.59Å 90.00° 125.01° 90.00°	Depositor
Resolution (Å)	37.25 – 1.77 59.46 – 1.45	Depositor EDS
% Data completeness (in resolution range)	96.7 (37.25-1.77) 64.5 (59.46-1.45)	Depositor EDS
R_{merge}	(Not available)	Depositor
R_{sym}	(Not available)	Depositor
$\langle I/\sigma(I) \rangle$ ¹	0.84 (at 1.45Å)	Xtrriage
Refinement program	PHENIX 1.17.1_3660	Depositor
R, R_{free}	0.162 , 0.200 0.162 , 0.201	Depositor DCC
R_{free} test set	1500 reflections (4.90%)	wwPDB-VP
Wilson B-factor (Å ²)	13.4	Xtrriage
Anisotropy	0.288	Xtrriage
Bulk solvent k_{sol} (e/Å ³), B_{sol} (Å ²)	0.38 , 59.3	EDS
L-test for twinning ²	$\langle L \rangle = 0.48$, $\langle L^2 \rangle = 0.31$	Xtrriage
Estimated twinning fraction	No twinning to report.	Xtrriage
F_o, F_c correlation	0.96	EDS
Total number of atoms	2240	wwPDB-VP
Average B, all atoms (Å ²)	20.0	wwPDB-VP

Xtrriage's analysis on translational NCS is as follows: *The largest off-origin peak in the Patterson function is 10.04% of the height of the origin peak. No significant pseudotranslation is detected.*

¹Intensities estimated from amplitudes.

²Theoretical values of $\langle |L| \rangle$, $\langle L^2 \rangle$ for acentric reflections are 0.5, 0.333 respectively for untwinned datasets, and 0.375, 0.2 for perfectly twinned datasets.

5 Model quality [i](#)

5.1 Standard geometry [i](#)

Bond lengths and bond angles in the following residue types are not validated in this section: VML, PEG, PGE

The Z score for a bond length (or angle) is the number of standard deviations the observed value is removed from the expected value. A bond length (or angle) with $|Z| > 5$ is considered an outlier worth inspection. RMSZ is the root-mean-square of all Z scores of the bond lengths (or angles).

Mol	Chain	Bond lengths		Bond angles	
		RMSZ	# Z >5	RMSZ	# Z >5
1	A	0.49	0/1013	0.68	0/1371
1	B	0.46	0/1017	0.64	0/1379
All	All	0.47	0/2030	0.66	0/2750

There are no bond length outliers.

There are no bond angle outliers.

There are no chirality outliers.

There are no planarity outliers.

5.2 Too-close contacts [i](#)

In the following table, the Non-H and H(model) columns list the number of non-hydrogen atoms and hydrogen atoms in the chain respectively. The H(added) column lists the number of hydrogen atoms added and optimized by MolProbity. The Clashes column lists the number of clashes within the asymmetric unit, whereas Symm-Clashes lists symmetry-related clashes.

Mol	Chain	Non-H	H(model)	H(added)	Clashes	Symm-Clashes
1	A	985	0	908	10	0
1	B	987	0	909	15	0
2	A	30	0	42	1	0
2	B	30	0	42	0	0
3	A	7	0	10	1	0
3	B	7	0	10	0	0
4	B	35	0	0	0	0
5	A	97	0	0	0	0
5	B	62	0	0	0	0
All	All	2240	0	1921	22	0

The all-atom clashscore is defined as the number of clashes found per 1000 atoms (including

hydrogen atoms). The all-atom clashscore for this structure is 6.

All (22) close contacts within the same asymmetric unit are listed below, sorted by their clash magnitude.

Atom-1	Atom-2	Interatomic distance (Å)	Clash overlap (Å)
1:A:196:PHE:HB2	2:A:304:PGE:H52	1.66	0.77
1:B:124:GLN:O	1:B:128:MET:HG3	1.92	0.70
1:A:214:ARG:C	3:A:303:PEG:H31	2.15	0.67
1:A:160:ILE:HG13	1:A:160:ILE:O	1.97	0.65
1:A:124:GLN:HG3	1:A:169:GLU:OE1	1.97	0.64
1:B:104[B]:ILE:HG13	1:A:104:ILE:HG23	1.81	0.61
1:B:93:GLU:HB3	1:A:98:PRO:HB2	1.84	0.60
1:B:119:ASN:OD1	1:B:122:GLU:HG3	2.06	0.56
1:B:104[A]:ILE:HG23	1:A:104:ILE:HG23	1.96	0.48
1:B:104[B]:ILE:HG23	1:B:111:TYR:HB2	1.98	0.46
1:B:124:GLN:HE22	1:B:133:SER:HA	1.82	0.45
1:B:97:GLY:HA3	1:B:98:PRO:HA	1.81	0.45
1:B:106:TYR:CD2	1:B:145:LEU:HD22	2.52	0.44
1:B:104[B]:ILE:HG22	1:B:111:TYR:O	2.18	0.43
1:B:118:LYS:HB3	1:B:122:GLU:HB2	1.99	0.43
1:B:124:GLN:OE1	1:B:169:GLU:CG	2.66	0.43
1:A:194:SER:O	1:A:197:LYS:HE2	2.19	0.43
1:A:118:LYS:HD2	1:A:209:TYR:CE1	2.54	0.43
1:B:186:LYS:C	1:B:186:LYS:HD3	2.40	0.41
1:B:100:PRO:HB2	1:B:103:TRP:CD1	2.55	0.41
1:A:116:GLU:OE1	1:A:116:GLU:N	2.54	0.41
1:B:110:CYS:HB2	1:B:213:GLN:HG3	2.03	0.41

There are no symmetry-related clashes.

5.3 Torsion angles [i](#)

5.3.1 Protein backbone [i](#)

In the following table, the Percentiles column shows the percent Ramachandran outliers of the chain as a percentile score with respect to all X-ray entries followed by that with respect to entries of similar resolution.

The Analysed column shows the number of residues for which the backbone conformation was analysed, and the total number of residues.

Mol	Chain	Analysed	Favoured	Allowed	Outliers	Percentiles
1	A	117/129 (91%)	116 (99%)	1 (1%)	0	100 100

Continued on next page...

Continued from previous page...

Mol	Chain	Analysed	Favoured	Allowed	Outliers	Percentiles	
1	B	120/129 (93%)	117 (98%)	3 (2%)	0	100	100
All	All	237/258 (92%)	233 (98%)	4 (2%)	0	100	100

There are no Ramachandran outliers to report.

5.3.2 Protein sidechains [i](#)

In the following table, the Percentiles column shows the percent sidechain outliers of the chain as a percentile score with respect to all X-ray entries followed by that with respect to entries of similar resolution.

The Analysed column shows the number of residues for which the sidechain conformation was analysed, and the total number of residues.

Mol	Chain	Analysed	Rotameric	Outliers	Percentiles	
1	A	110/118 (93%)	108 (98%)	2 (2%)	59	45
1	B	110/118 (93%)	109 (99%)	1 (1%)	78	72
All	All	220/236 (93%)	217 (99%)	3 (1%)	67	56

All (3) residues with a non-rotameric sidechain are listed below:

Mol	Chain	Res	Type
1	B	142	ASP
1	A	142	ASP
1	A	177	ASN

Sometimes sidechains can be flipped to improve hydrogen bonding and reduce clashes. There are no such sidechains identified.

5.3.3 RNA [i](#)

There are no RNA molecules in this entry.

5.4 Non-standard residues in protein, DNA, RNA chains [i](#)

There are no non-standard protein/DNA/RNA residues in this entry.

5.5 Carbohydrates [i](#)

There are no monosaccharides in this entry.

5.6 Ligand geometry [i](#)

9 ligands are modelled in this entry.

In the following table, the Counts columns list the number of bonds (or angles) for which Mogul statistics could be retrieved, the number of bonds (or angles) that are observed in the model and the number of bonds (or angles) that are defined in the Chemical Component Dictionary. The Link column lists molecule types, if any, to which the group is linked. The Z score for a bond length (or angle) is the number of standard deviations the observed value is removed from the expected value. A bond length (or angle) with $|Z| > 2$ is considered an outlier worth inspection. RMSZ is the root-mean-square of all Z scores of the bond lengths (or angles).

Mol	Type	Chain	Res	Link	Bond lengths			Bond angles		
					Counts	RMSZ	# Z > 2	Counts	RMSZ	# Z > 2
4	VML	B	404	-	37,37,37	0.83	1 (2%)	52,55,55	1.39	6 (11%)
2	PGE	B	402	-	9,9,9	0.36	0	8,8,8	0.42	0
3	PEG	B	403	-	6,6,6	0.51	0	5,5,5	0.25	0
2	PGE	B	401	-	9,9,9	0.33	0	8,8,8	0.52	0
3	PEG	A	303	-	6,6,6	0.48	0	5,5,5	0.49	0
2	PGE	A	301	-	9,9,9	0.34	0	8,8,8	0.18	0
2	PGE	B	405	-	9,9,9	0.33	0	8,8,8	0.30	0
2	PGE	A	302	-	9,9,9	0.34	0	8,8,8	0.28	0
2	PGE	A	304	-	9,9,9	0.41	0	8,8,8	0.37	0

In the following table, the Chirals column lists the number of chiral outliers, the number of chiral centers analysed, the number of these observed in the model and the number defined in the Chemical Component Dictionary. Similar counts are reported in the Torsion and Rings columns. '-' means no outliers of that kind were identified.

Mol	Type	Chain	Res	Link	Chirals	Torsions	Rings
4	VML	B	404	-	-	2/36/36/36	0/3/3/3
2	PGE	B	402	-	-	0/7/7/7	-
3	PEG	B	403	-	-	3/4/4/4	-
2	PGE	B	401	-	-	0/7/7/7	-
3	PEG	A	303	-	-	1/4/4/4	-
2	PGE	A	301	-	-	2/7/7/7	-
2	PGE	B	405	-	-	5/7/7/7	-
2	PGE	A	302	-	-	1/7/7/7	-
2	PGE	A	304	-	-	2/7/7/7	-

All (1) bond length outliers are listed below:

Mol	Chain	Res	Type	Atoms	Z	Observed(Å)	Ideal(Å)
4	B	404	VML	C4-N2	2.30	1.38	1.34

All (6) bond angle outliers are listed below:

Mol	Chain	Res	Type	Atoms	Z	Observed(°)	Ideal(°)
4	B	404	VML	C26-C6-N7	-4.35	101.60	112.89
4	B	404	VML	C11-C10-C15	2.94	121.16	117.77
4	B	404	VML	C20-C19-C18	2.80	122.15	117.97
4	B	404	VML	O9-C8-C10	-2.68	116.11	121.01
4	B	404	VML	C30-C31-C26	-2.47	118.13	121.01
4	B	404	VML	C29-C30-C31	2.28	122.15	117.76

There are no chirality outliers.

All (16) torsion outliers are listed below:

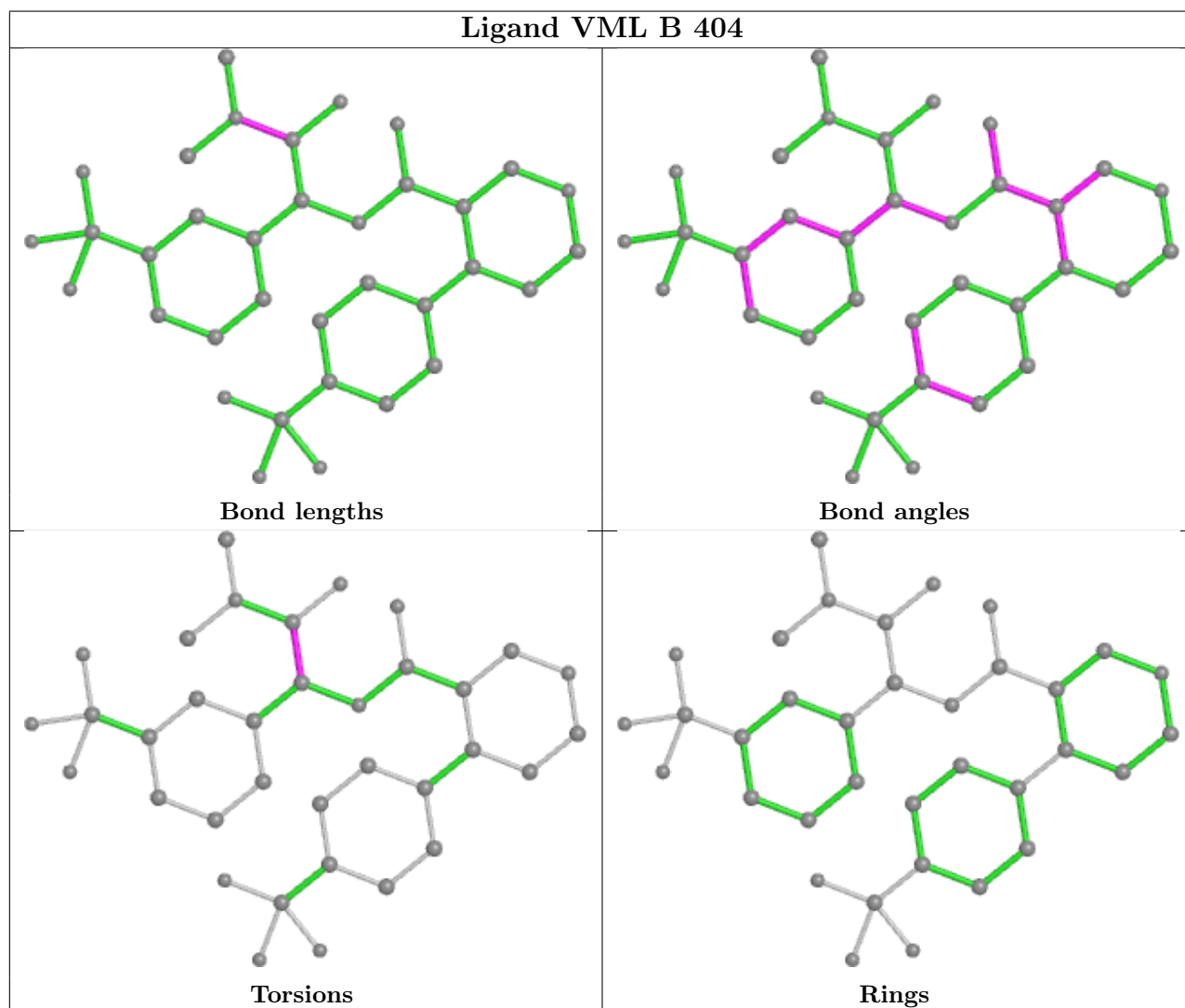
Mol	Chain	Res	Type	Atoms
4	B	404	VML	N2-C4-C6-N7
4	B	404	VML	O5-C4-C6-N7
2	B	405	PGE	C4-C3-O2-C2
2	B	405	PGE	O3-C5-C6-O4
3	B	403	PEG	O2-C3-C4-O4
2	B	405	PGE	O2-C3-C4-O3
2	B	405	PGE	O1-C1-C2-O2
2	A	301	PGE	O2-C3-C4-O3
2	A	302	PGE	O1-C1-C2-O2
3	B	403	PEG	C4-C3-O2-C2
2	A	304	PGE	O3-C5-C6-O4
2	A	304	PGE	O2-C3-C4-O3
2	A	301	PGE	C4-C3-O2-C2
2	B	405	PGE	C1-C2-O2-C3
3	B	403	PEG	C1-C2-O2-C3
3	A	303	PEG	C4-C3-O2-C2

There are no ring outliers.

2 monomers are involved in 2 short contacts:

Mol	Chain	Res	Type	Clashes	Symm-Clashes
3	A	303	PEG	1	0
2	A	304	PGE	1	0

The following is a two-dimensional graphical depiction of Mogul quality analysis of bond lengths, bond angles, torsion angles, and ring geometry for all instances of the Ligand of Interest. In addition, ligands with molecular weight > 250 and outliers as shown on the validation Tables will also be included. For torsion angles, if less than 5% of the Mogul distribution of torsion angles is within 10 degrees of the torsion angle in question, then that torsion angle is considered an outlier. Any bond that is central to one or more torsion angles identified as an outlier by Mogul will be highlighted in the graph. For rings, the root-mean-square deviation (RMSD) between the ring in question and similar rings identified by Mogul is calculated over all ring torsion angles. If the average RMSD is greater than 60 degrees and the minimal RMSD between the ring in question and any Mogul-identified rings is also greater than 60 degrees, then that ring is considered an outlier. The outliers are highlighted in purple. The color gray indicates Mogul did not find sufficient equivalents in the CSD to analyse the geometry.



5.7 Other polymers [i](#)

There are no such residues in this entry.

5.8 Polymer linkage issues

There are no chain breaks in this entry.

6 Fit of model and data [i](#)

6.1 Protein, DNA and RNA chains [i](#)

In the following table, the column labelled '#RSRZ > 2' contains the number (and percentage) of RSRZ outliers, followed by percent RSRZ outliers for the chain as percentile scores relative to all X-ray entries and entries of similar resolution. The OWAB column contains the minimum, median, 95th percentile and maximum values of the occupancy-weighted average B-factor per residue. The column labelled 'Q < 0.9' lists the number of (and percentage) of residues with an average occupancy less than 0.9.

Mol	Chain	Analysed	<RSRZ>	#RSRZ>2	OWAB(Å ²)	Q<0.9
1	A	120/129 (93%)	-0.41	0 100 100	9, 15, 31, 51	0
1	B	123/129 (95%)	-0.31	1 (0%) 86 86	10, 18, 38, 53	0
All	All	243/258 (94%)	-0.36	1 (0%) 92 92	9, 16, 38, 53	0

All (1) RSRZ outliers are listed below:

Mol	Chain	Res	Type	RSRZ
1	B	214	ARG	2.2

6.2 Non-standard residues in protein, DNA, RNA chains [i](#)

There are no non-standard protein/DNA/RNA residues in this entry.

6.3 Carbohydrates [i](#)

There are no monosaccharides in this entry.

6.4 Ligands [i](#)

In the following table, the Atoms column lists the number of modelled atoms in the group and the number defined in the chemical component dictionary. The B-factors column lists the minimum, median, 95th percentile and maximum values of B factors of atoms in the group. The column labelled 'Q < 0.9' lists the number of atoms with occupancy less than 0.9.

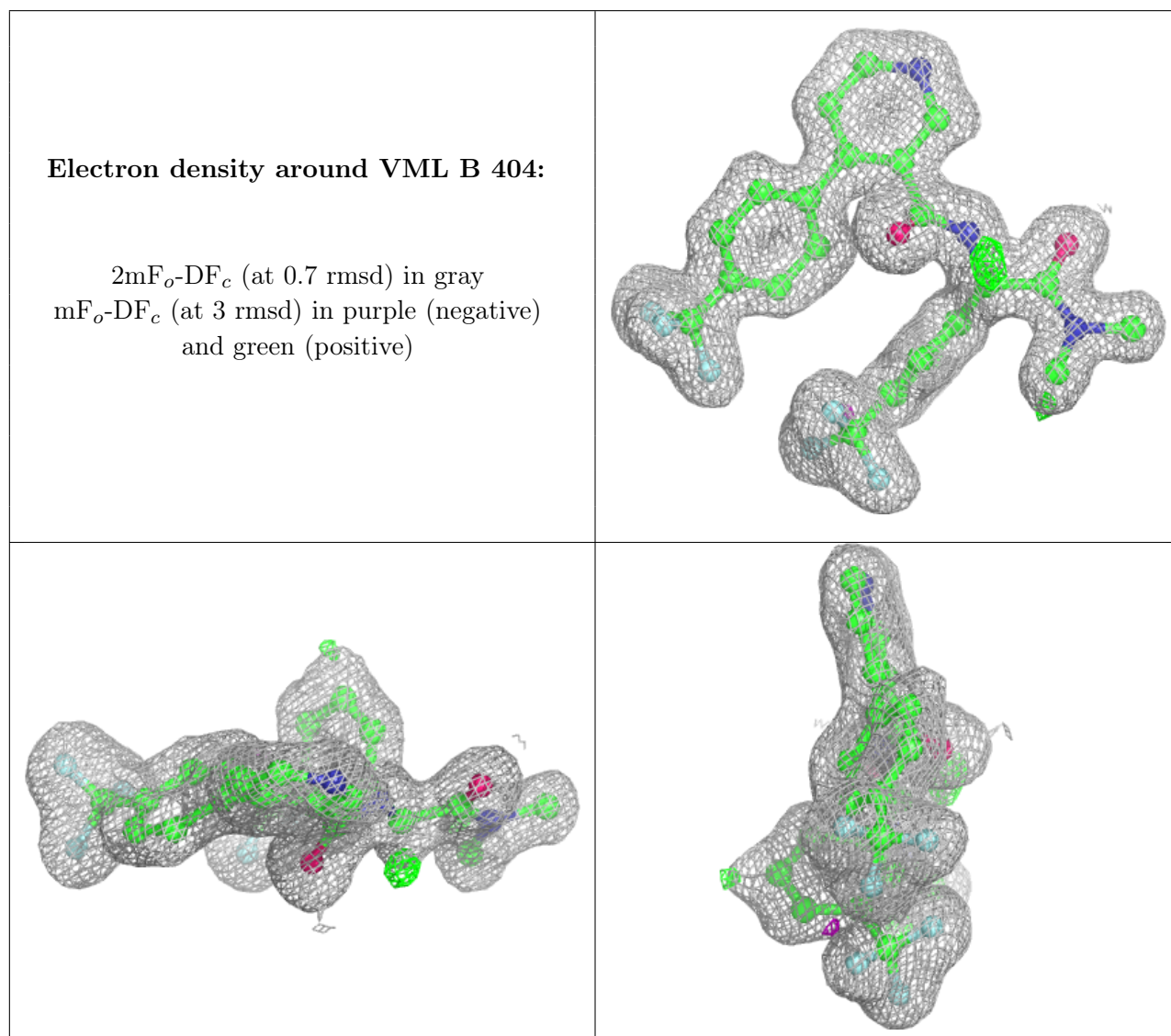
Mol	Type	Chain	Res	Atoms	RSCC	RSR	B-factors(Å ²)	Q<0.9
3	PEG	B	403	7/7	0.82	0.18	35,35,45,46	0
3	PEG	A	303	7/7	0.84	0.11	31,36,46,47	0
2	PGE	A	304	10/10	0.85	0.17	29,32,40,44	0
2	PGE	B	405	10/10	0.89	0.13	38,41,44,46	0

Continued on next page...

Continued from previous page...

Mol	Type	Chain	Res	Atoms	RSCC	RSR	B-factors(\AA^2)	Q<0.9
2	PGE	A	301	10/10	0.90	0.12	32,34,36,36	0
2	PGE	A	302	10/10	0.95	0.11	17,27,41,44	0
2	PGE	B	401	10/10	0.96	0.07	16,19,28,29	0
2	PGE	B	402	10/10	0.96	0.05	19,23,27,28	0
4	VML	B	404	35/35	0.96	0.08	8,12,23,24	0

The following is a graphical depiction of the model fit to experimental electron density of all instances of the Ligand of Interest. In addition, ligands with molecular weight > 250 and outliers as shown on the geometry validation Tables will also be included. Each fit is shown from different orientation to approximate a three-dimensional view.



6.5 Other polymers [\(i\)](#)

There are no such residues in this entry.