



Full wwPDB X-ray Structure Validation Report ⓘ

Sep 19, 2023 – 11:58 AM EDT

PDB ID : 5EA6
Title : Crystal Structure of Inhibitor BTA-9881 in Complex with Prefusion RSV F Glycoprotein
Authors : Battles, M.B.; McLellan, J.S.; Arnoult, E.; Roymans, D.; Langedijk, J.P.
Deposited on : 2015-10-15
Resolution : 2.75 Å(reported)

This is a Full wwPDB X-ray Structure Validation Report for a publicly released PDB entry.

We welcome your comments at validation@mail.wwpdb.org

A user guide is available at

<https://www.wwpdb.org/validation/2017/XrayValidationReportHelp>

with specific help available everywhere you see the ⓘ symbol.

The types of validation reports are described at

<http://www.wwpdb.org/validation/2017/FAQs#types>.

The following versions of software and data (see [references ⓘ](#)) were used in the production of this report:

MolProbity : 4.02b-467
Mogul : 1.8.5 (274361), CSD as541be (2020)
Xtrriage (Phenix) : 1.13
EDS : 2.35.1
buster-report : 1.1.7 (2018)
Percentile statistics : 20191225.v01 (using entries in the PDB archive December 25th 2019)
Refmac : 5.8.0158
CCP4 : 7.0.044 (Gargrove)
Ideal geometry (proteins) : Engh & Huber (2001)
Ideal geometry (DNA, RNA) : Parkinson et al. (1996)
Validation Pipeline (wwPDB-VP) : 2.35.1

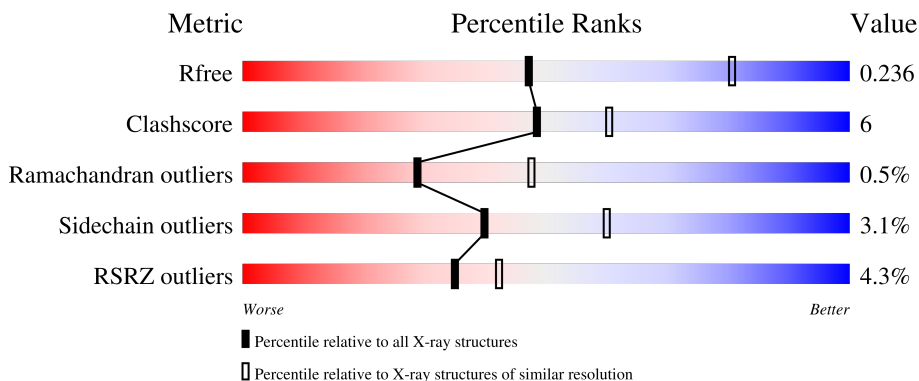
1 Overall quality at a glance

The following experimental techniques were used to determine the structure:

X-RAY DIFFRACTION

The reported resolution of this entry is 2.75 Å.

Percentile scores (ranging between 0-100) for global validation metrics of the entry are shown in the following graphic. The table shows the number of entries on which the scores are based.



Metric	Whole archive (#Entries)	Similar resolution (#Entries, resolution range(Å))
R_{free}	130704	1235 (2.78-2.74)
Clashscore	141614	1277 (2.78-2.74)
Ramachandran outliers	138981	1257 (2.78-2.74)
Sidechain outliers	138945	1257 (2.78-2.74)
RSRZ outliers	127900	1207 (2.78-2.74)

The table below summarises the geometric issues observed across the polymeric chains and their fit to the electron density. The red, orange, yellow and green segments of the lower bar indicate the fraction of residues that contain outliers for ≥ 3 , 2, 1 and 0 types of geometric quality criteria respectively. A grey segment represents the fraction of residues that are not modelled. The numeric value for each fraction is indicated below the corresponding segment, with a dot representing fractions $\leq 5\%$. The upper red bar (where present) indicates the fraction of residues that have poor fit to the electron density. The numeric value is given above the bar.

Mol	Chain	Length	Quality of chain
1	F	568	

The following table lists non-polymeric compounds, carbohydrate monomers and non-standard residues in protein, DNA, RNA chains that are outliers for geometric or electron-density-fit criteria:

Mol	Type	Chain	Res	Chirality	Geometry	Clashes	Electron density
3	SO4	F	603	-	-	-	X

2 Entry composition [i](#)

There are 5 unique types of molecules in this entry. The entry contains 3366 atoms, of which 0 are hydrogens and 0 are deuteriums.

In the tables below, the ZeroOcc column contains the number of atoms modelled with zero occupancy, the AltConf column contains the number of residues with at least one atom in alternate conformation and the Trace column contains the number of residues modelled with at most 2 atoms.

- Molecule 1 is a protein called Fusion glycoprotein F0.

Mol	Chain	Residues	Atoms					ZeroOcc	AltConf	Trace
			Total	C	N	O	S			
1	F	422	3275	2080	535	639	21	0	0	0

There are 62 discrepancies between the modelled and reference sequences:

Chain	Residue	Modelled	Actual	Comment	Reference
F	102	ALA	PRO	variant	UNP P03420
F	155	CYS	SER	engineered mutation	UNP P03420
F	190	PHE	SER	engineered mutation	UNP P03420
F	207	LEU	VAL	engineered mutation	UNP P03420
F	290	CYS	SER	engineered mutation	UNP P03420
F	379	VAL	ILE	variant	UNP P03420
F	447	VAL	MET	variant	UNP P03420
F	514	SER	-	expression tag	UNP P03420
F	515	ALA	-	expression tag	UNP P03420
F	516	ILE	-	expression tag	UNP P03420
F	517	GLY	-	expression tag	UNP P03420
F	518	GLY	-	expression tag	UNP P03420
F	519	TYR	-	expression tag	UNP P03420
F	520	ILE	-	expression tag	UNP P03420
F	521	PRO	-	expression tag	UNP P03420
F	522	GLU	-	expression tag	UNP P03420
F	523	ALA	-	expression tag	UNP P03420
F	524	PRO	-	expression tag	UNP P03420
F	525	ARG	-	expression tag	UNP P03420
F	526	ASP	-	expression tag	UNP P03420
F	527	GLY	-	expression tag	UNP P03420
F	528	GLN	-	expression tag	UNP P03420
F	529	ALA	-	expression tag	UNP P03420
F	530	TYR	-	expression tag	UNP P03420
F	531	VAL	-	expression tag	UNP P03420
F	532	ARG	-	expression tag	UNP P03420
F	533	LYS	-	expression tag	UNP P03420

Continued on next page...

Continued from previous page...

Chain	Residue	Modelled	Actual	Comment	Reference
F	534	ASP	-	expression tag	UNP P03420
F	535	GLY	-	expression tag	UNP P03420
F	536	GLU	-	expression tag	UNP P03420
F	537	TRP	-	expression tag	UNP P03420
F	538	VAL	-	expression tag	UNP P03420
F	539	LEU	-	expression tag	UNP P03420
F	540	LEU	-	expression tag	UNP P03420
F	541	SER	-	expression tag	UNP P03420
F	542	THR	-	expression tag	UNP P03420
F	543	PHE	-	expression tag	UNP P03420
F	544	LEU	-	expression tag	UNP P03420
F	545	GLY	-	expression tag	UNP P03420
F	546	GLY	-	expression tag	UNP P03420
F	547	LEU	-	expression tag	UNP P03420
F	548	VAL	-	expression tag	UNP P03420
F	549	PRO	-	expression tag	UNP P03420
F	550	ARG	-	expression tag	UNP P03420
F	551	GLY	-	expression tag	UNP P03420
F	552	SER	-	expression tag	UNP P03420
F	553	HIS	-	expression tag	UNP P03420
F	554	HIS	-	expression tag	UNP P03420
F	555	HIS	-	expression tag	UNP P03420
F	556	HIS	-	expression tag	UNP P03420
F	557	HIS	-	expression tag	UNP P03420
F	558	HIS	-	expression tag	UNP P03420
F	559	SER	-	expression tag	UNP P03420
F	560	ALA	-	expression tag	UNP P03420
F	561	TRP	-	expression tag	UNP P03420
F	562	SER	-	expression tag	UNP P03420
F	563	HIS	-	expression tag	UNP P03420
F	564	PRO	-	expression tag	UNP P03420
F	565	GLN	-	expression tag	UNP P03420
F	566	PHE	-	expression tag	UNP P03420
F	567	GLU	-	expression tag	UNP P03420
F	568	LYS	-	expression tag	UNP P03420

- Molecule 2 is 2-[N-CYCLOHEXYLAMINO]ETHANE SULFONIC ACID (three-letter code: NHE) (formula: C₈H₁₇NO₃S).



Mol	Chain	Residues	Atoms					ZeroOcc	AltConf
			Total	C	N	O	S		
2	F	1	13	8	1	3	1	0	0

- Molecule 3 is SULFATE ION (three-letter code: SO4) (formula: O₄S).



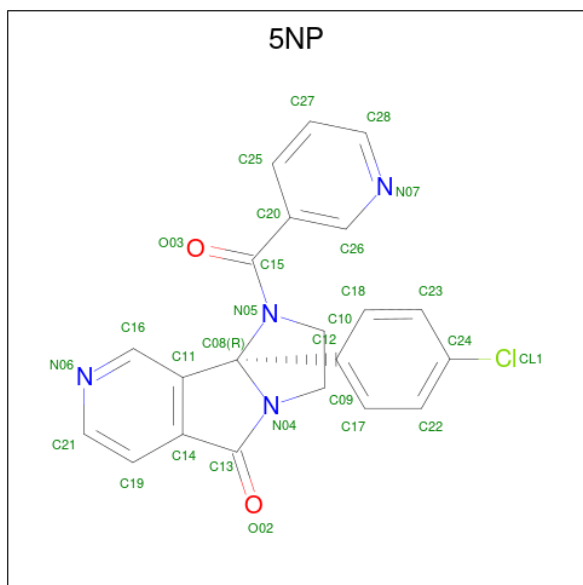
Mol	Chain	Residues	Atoms			ZeroOcc	AltConf
			Total	O	S		
3	F	1	5	4	1	0	0
3	F	1	5	4	1	0	0
3	F	1	5	4	1	0	0

Continued on next page...

Continued from previous page...

Mol	Chain	Residues	Atoms			ZeroOcc	AltConf
3	F	1	Total	O	S	0	0
			5	4	1		

- Molecule 4 is (9 {b} {R})-9 {b}-(4-chlorophenyl)-1-pyridin-3-ylcarbonyl-2,3-dihydroimidazo[5,6]pyrrolo[1,2- {a}]pyridin-5-one (three-letter code: 5NP) (formula: C₂₁H₁₅ClN₄O₂).



Mol	Chain	Residues	Atoms				ZeroOcc	AltConf	
4	F	1	Total	C	Cl	N	O	0	0
			28	21	1	4	2		

- Molecule 5 is water.

Mol	Chain	Residues	Atoms		ZeroOcc	AltConf
5	F	30	Total	O	0	0
			30	30		

4 Data and refinement statistics

Property	Value	Source
Space group	P 41 3 2	Depositor
Cell constants a, b, c, α , β , γ	170.16Å 170.16Å 170.16Å 90.00° 90.00° 90.00°	Depositor
Resolution (Å)	49.12 – 2.75 49.12 – 2.75	Depositor EDS
% Data completeness (in resolution range)	100.0 (49.12-2.75) 92.1 (49.12-2.75)	Depositor EDS
R_{merge}	0.28	Depositor
R_{sym}	(Not available)	Depositor
$\langle I/\sigma(I) \rangle$ ¹	1.14 (at 2.77Å)	Xtrriage
Refinement program	PHENIX	Depositor
R, R_{free}	0.202 , 0.235 0.209 , 0.236	Depositor DCC
R_{free} test set	1129 reflections (5.02%)	wwPDB-VP
Wilson B-factor (Å ²)	56.4	Xtrriage
Anisotropy	0.000	Xtrriage
Bulk solvent k_{sol} (e/Å ³), B_{sol} (Å ²)	0.34 , 48.0	EDS
L-test for twinning ²	$\langle L \rangle = 0.49$, $\langle L^2 \rangle = 0.32$	Xtrriage
Estimated twinning fraction	No twinning to report.	Xtrriage
F_o, F_c correlation	0.94	EDS
Total number of atoms	3366	wwPDB-VP
Average B, all atoms (Å ²)	70.0	wwPDB-VP

Xtrriage's analysis on translational NCS is as follows: *The largest off-origin peak in the Patterson function is 2.67% of the height of the origin peak. No significant pseudotranslation is detected.*

¹Intensities estimated from amplitudes.

²Theoretical values of $\langle |L| \rangle$, $\langle L^2 \rangle$ for acentric reflections are 0.5, 0.333 respectively for untwinned datasets, and 0.375, 0.2 for perfectly twinned datasets.

5 Model quality [i](#)

5.1 Standard geometry [i](#)

Bond lengths and bond angles in the following residue types are not validated in this section: 5NP, SO4, NHE

The Z score for a bond length (or angle) is the number of standard deviations the observed value is removed from the expected value. A bond length (or angle) with $|Z| > 5$ is considered an outlier worth inspection. RMSZ is the root-mean-square of all Z scores of the bond lengths (or angles).

Mol	Chain	Bond lengths		Bond angles	
		RMSZ	# Z >5	RMSZ	# Z >5
1	F	0.37	0/3322	0.50	1/4499 (0.0%)

There are no bond length outliers.

All (1) bond angle outliers are listed below:

Mol	Chain	Res	Type	Atoms	Z	Observed(°)	Ideal(°)
1	F	334	LEU	CA-CB-CG	5.09	127.02	115.30

There are no chirality outliers.

There are no planarity outliers.

5.2 Too-close contacts [i](#)

In the following table, the Non-H and H(model) columns list the number of non-hydrogen atoms and hydrogen atoms in the chain respectively. The H(added) column lists the number of hydrogen atoms added and optimized by MolProbity. The Clashes column lists the number of clashes within the asymmetric unit, whereas Symm-Clashes lists symmetry-related clashes.

Mol	Chain	Non-H	H(model)	H(added)	Clashes	Symm-Clashes
1	F	3275	0	3320	37	0
2	F	13	0	17	0	0
3	F	20	0	0	0	0
4	F	28	0	15	3	0
5	F	30	0	0	2	0
All	All	3366	0	3352	40	0

The all-atom clashscore is defined as the number of clashes found per 1000 atoms (including hydrogen atoms). The all-atom clashscore for this structure is 6.

All (40) close contacts within the same asymmetric unit are listed below, sorted by their clash magnitude.

Atom-1	Atom-2	Interatomic distance (Å)	Clash overlap (Å)
1:F:246:PRO:HB3	1:F:283:GLN:HA	1.68	0.74
1:F:293:LYS:HG2	1:F:294:GLU:HG3	1.78	0.66
1:F:171:LEU:HD13	1:F:191:LYS:HB2	1.85	0.57
1:F:267:THR:HG23	1:F:270:GLN:H	1.68	0.57
1:F:217:ILE:HG12	1:F:218:GLU:OE2	2.05	0.56
4:F:606:5NP:H14	4:F:606:5NP:H1	1.88	0.56
1:F:167:ILE:HG23	1:F:189:THR:HG21	1.90	0.53
1:F:487:GLU:HB3	1:F:490:ALA:HB2	1.91	0.52
1:F:78:LEU:HD13	1:F:220:VAL:HG11	1.92	0.52
1:F:221:ILE:O	1:F:225:GLN:HG2	2.11	0.51
1:F:200:ASP:HA	1:F:204:LEU:HD23	1.93	0.51
1:F:217:ILE:HG23	1:F:219:THR:H	1.76	0.51
1:F:46:SER:HB3	1:F:313:CYS:SG	2.51	0.51
1:F:352:PHE:CE2	1:F:372:SER:HB3	2.45	0.51
4:F:606:5NP:H9	4:F:606:5NP:H11	1.93	0.50
1:F:264:MET:HE2	1:F:303:LEU:HD13	1.94	0.50
1:F:217:ILE:HG12	1:F:218:GLU:H	1.76	0.50
4:F:606:5NP:H14	4:F:606:5NP:C10	2.42	0.50
1:F:199:ILE:HA	1:F:203:LEU:HD23	1.93	0.49
1:F:79:ILE:HD11	1:F:220:VAL:HA	1.95	0.47
1:F:244:THR:OG1	1:F:287:SER:HB3	2.14	0.47
1:F:415:SER:HB3	1:F:417:TYR:HE2	1.80	0.47
1:F:432:ILE:HD11	1:F:447:VAL:HG22	1.96	0.47
1:F:310:ASP:OD1	1:F:364:ARG:NH1	2.40	0.46
1:F:415:SER:HB3	1:F:417:TYR:CE2	2.51	0.46
1:F:354:GLN:O	1:F:356:GLU:N	2.49	0.45
1:F:483:PHE:HA	1:F:484:PRO:HD3	1.87	0.45
1:F:37:CYS:SG	1:F:319:SER:HB3	2.58	0.44
1:F:354:GLN:O	1:F:357:THR:HG23	2.17	0.44
1:F:354:GLN:C	1:F:356:GLU:H	2.21	0.44
1:F:327:LYS:HG3	1:F:330:SER:OG	2.17	0.43
1:F:197:ASN:ND2	5:F:703:HOH:O	2.43	0.43
1:F:48:LEU:HD22	1:F:367:CYS:HB2	1.99	0.43
1:F:290:CYS:SG	1:F:300:VAL:HG23	2.59	0.43
1:F:203:LEU:O	1:F:204:LEU:HD22	2.19	0.42
1:F:321:LEU:HD11	1:F:473:PRO:HB3	2.00	0.42
1:F:362:SER:OG	1:F:363:ASN:N	2.53	0.41
1:F:393:CYS:HB3	5:F:711:HOH:O	2.21	0.41
1:F:264:MET:HG2	1:F:265:PRO:HD2	2.03	0.40
1:F:176:LYS:HE2	1:F:176:LYS:HB2	1.84	0.40

There are no symmetry-related clashes.

5.3 Torsion angles [i](#)

5.3.1 Protein backbone [i](#)

In the following table, the Percentiles column shows the percent Ramachandran outliers of the chain as a percentile score with respect to all X-ray entries followed by that with respect to entries of similar resolution.

The Analysed column shows the number of residues for which the backbone conformation was analysed, and the total number of residues.

Mol	Chain	Analysed	Favoured	Allowed	Outliers	Percentiles
1	F	414/568 (73%)	395 (95%)	17 (4%)	2 (0%)	29 47

All (2) Ramachandran outliers are listed below:

Mol	Chain	Res	Type
1	F	355	ALA
1	F	265	PRO

5.3.2 Protein sidechains [i](#)

In the following table, the Percentiles column shows the percent sidechain outliers of the chain as a percentile score with respect to all X-ray entries followed by that with respect to entries of similar resolution.

The Analysed column shows the number of residues for which the sidechain conformation was analysed, and the total number of residues.

Mol	Chain	Analysed	Rotameric	Outliers	Percentiles
1	F	384/510 (75%)	372 (97%)	12 (3%)	40 60

All (12) residues with a non-rotameric sidechain are listed below:

Mol	Chain	Res	Type
1	F	98	GLN
1	F	190	PHE
1	F	204	LEU
1	F	235	ARG
1	F	255	SER
1	F	292	ILE

Continued on next page...

Continued from previous page...

Mol	Chain	Res	Type
1	F	326	THR
1	F	334	LEU
1	F	339	ARG
1	F	416	CYS
1	F	429	ARG
1	F	450	VAL

Sometimes sidechains can be flipped to improve hydrogen bonding and reduce clashes. There are no such sidechains identified.

5.3.3 RNA [i](#)

There are no RNA molecules in this entry.

5.4 Non-standard residues in protein, DNA, RNA chains [i](#)

There are no non-standard protein/DNA/RNA residues in this entry.

5.5 Carbohydrates [i](#)

There are no monosaccharides in this entry.

5.6 Ligand geometry [i](#)

6 ligands are modelled in this entry.

In the following table, the Counts columns list the number of bonds (or angles) for which Mogul statistics could be retrieved, the number of bonds (or angles) that are observed in the model and the number of bonds (or angles) that are defined in the Chemical Component Dictionary. The Link column lists molecule types, if any, to which the group is linked. The Z score for a bond length (or angle) is the number of standard deviations the observed value is removed from the expected value. A bond length (or angle) with $|Z| > 2$ is considered an outlier worth inspection. RMSZ is the root-mean-square of all Z scores of the bond lengths (or angles).

Mol	Type	Chain	Res	Link	Bond lengths			Bond angles		
					Counts	RMSZ	$\# Z > 2$	Counts	RMSZ	$\# Z > 2$
3	SO4	F	602	-	4,4,4	0.16	0	6,6,6	0.16	0
3	SO4	F	603	-	4,4,4	0.15	0	6,6,6	0.08	0
2	NHE	F	601	-	13,13,13	1.39	2 (15%)	16,17,17	1.86	4 (25%)
3	SO4	F	604	-	4,4,4	0.15	0	6,6,6	0.07	0

Mol	Type	Chain	Res	Link	Bond lengths			Bond angles		
					Counts	RMSZ	# Z > 2	Counts	RMSZ	# Z > 2
3	SO4	F	605	-	4,4,4	0.14	0	6,6,6	0.11	0
4	5NP	F	606	-	32,32,32	7.63	27 (84%)	36,48,48	1.77	8 (22%)

In the following table, the Chirals column lists the number of chiral outliers, the number of chiral centers analysed, the number of these observed in the model and the number defined in the Chemical Component Dictionary. Similar counts are reported in the Torsion and Rings columns. '-' means no outliers of that kind were identified.

Mol	Type	Chain	Res	Link	Chirals	Torsions	Rings
4	5NP	F	606	-	-	8/14/45/45	0/5/5/5
2	NHE	F	601	-	-	5/7/15/15	0/1/1/1

All (29) bond length outliers are listed below:

Mol	Chain	Res	Type	Atoms	Z	Observed(Å)	Ideal(Å)
4	F	606	5NP	C09-N04	-25.66	1.16	1.47
4	F	606	5NP	C10-N05	13.25	1.63	1.47
4	F	606	5NP	C16-C11	12.38	1.54	1.38
4	F	606	5NP	C18-C12	8.63	1.53	1.39
4	F	606	5NP	C17-C12	8.61	1.53	1.39
4	F	606	5NP	C26-C20	8.23	1.52	1.39
4	F	606	5NP	C22-C24	7.68	1.52	1.38
4	F	606	5NP	C22-C17	7.53	1.52	1.38
4	F	606	5NP	C23-C18	7.21	1.51	1.38
4	F	606	5NP	C23-C24	7.17	1.51	1.38
4	F	606	5NP	C19-C21	7.02	1.52	1.38
4	F	606	5NP	C13-N04	6.82	1.47	1.36
4	F	606	5NP	C19-C14	6.35	1.50	1.39
4	F	606	5NP	C16-N06	6.31	1.47	1.34
4	F	606	5NP	C15-N05	5.95	1.44	1.35
4	F	606	5NP	C08-N05	-5.94	1.38	1.46
4	F	606	5NP	C26-N07	5.64	1.46	1.34
4	F	606	5NP	C25-C20	5.18	1.48	1.39
4	F	606	5NP	C27-C28	4.90	1.52	1.37
4	F	606	5NP	C28-N07	4.71	1.47	1.33
4	F	606	5NP	C21-N06	4.71	1.47	1.33
4	F	606	5NP	C14-C11	4.06	1.45	1.39
4	F	606	5NP	C27-C25	3.83	1.47	1.38
4	F	606	5NP	C14-C13	3.12	1.53	1.48
4	F	606	5NP	C08-C12	3.03	1.56	1.53
2	F	601	NHE	C2-S	2.77	1.81	1.77
2	F	601	NHE	O2-S	2.56	1.52	1.45

Continued on next page...

Continued from previous page...

Mol	Chain	Res	Type	Atoms	Z	Observed(Å)	Ideal(Å)
4	F	606	5NP	C08-N04	2.47	1.50	1.46
4	F	606	5NP	C08-C11	2.42	1.55	1.52

All (12) bond angle outliers are listed below:

Mol	Chain	Res	Type	Atoms	Z	Observed(°)	Ideal(°)
4	F	606	5NP	C12-C08-C11	-4.85	97.94	114.21
4	F	606	5NP	C09-N04-C13	4.40	132.89	123.17
2	F	601	NHE	O3-S-O1	-3.89	101.76	111.27
4	F	606	5NP	C20-C15-N05	3.89	123.08	117.99
2	F	601	NHE	O1-S-C2	3.60	111.24	106.92
2	F	601	NHE	O3-S-C2	3.29	111.08	105.77
4	F	606	5NP	C20-C26-N07	-3.20	118.76	123.49
4	F	606	5NP	C25-C20-C26	2.86	120.87	117.63
2	F	601	NHE	O2-S-C2	2.84	110.33	106.92
4	F	606	5NP	C19-C21-N06	-2.60	119.10	123.62
4	F	606	5NP	C11-C08-N05	2.03	124.68	114.93
4	F	606	5NP	C28-N07-C26	2.01	120.33	116.85

There are no chirality outliers.

All (13) torsion outliers are listed below:

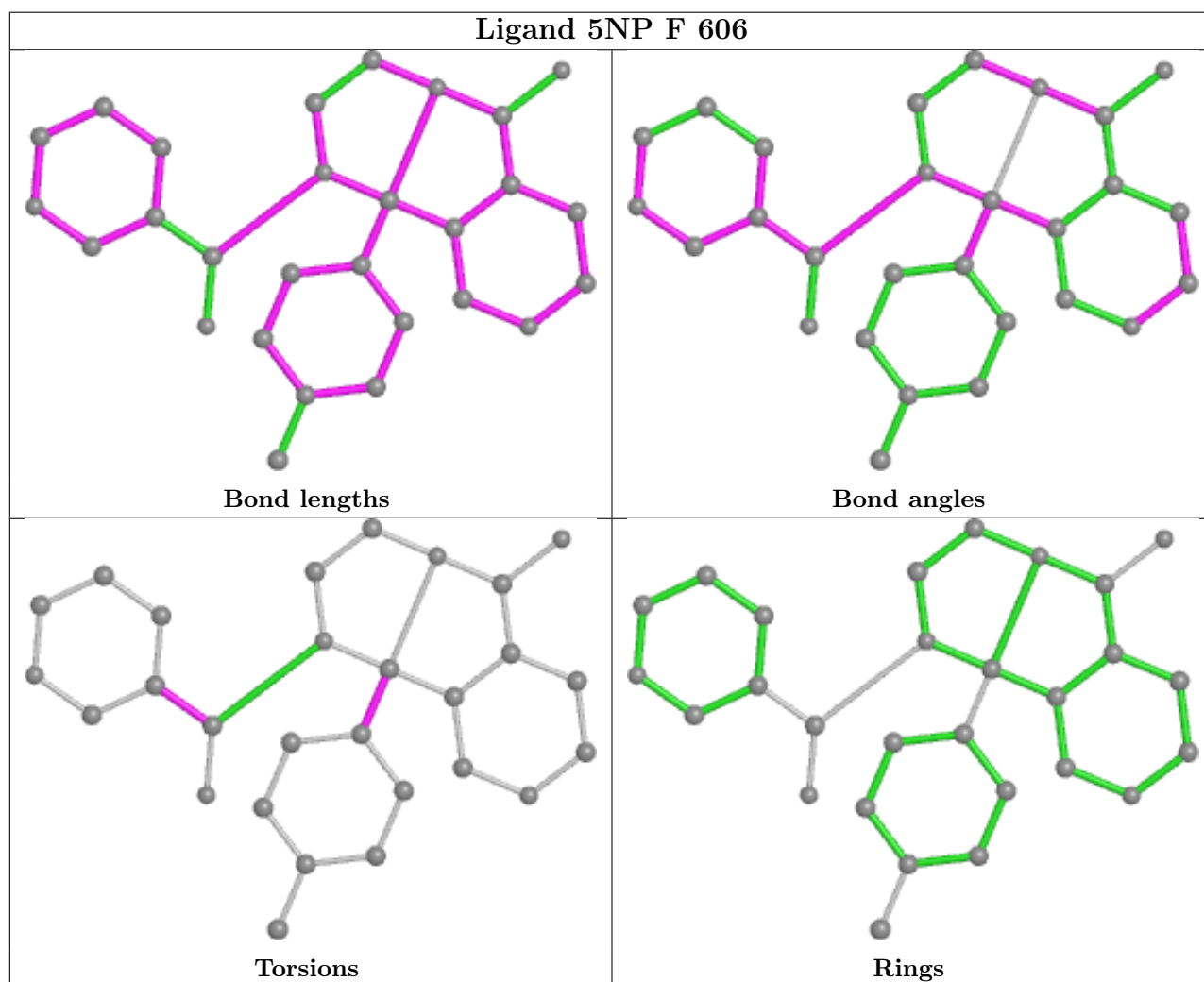
Mol	Chain	Res	Type	Atoms
2	F	601	NHE	C1-C2-S-O2
2	F	601	NHE	C1-C2-S-O3
4	F	606	5NP	O03-C15-C20-C26
4	F	606	5NP	N05-C15-C20-C26
4	F	606	5NP	O03-C15-C20-C25
2	F	601	NHE	C2-C1-N-C1'
4	F	606	5NP	N05-C15-C20-C25
2	F	601	NHE	C1-C2-S-O1
2	F	601	NHE	C2'-C1'-N-C1
4	F	606	5NP	C11-C08-C12-C17
4	F	606	5NP	C11-C08-C12-C18
4	F	606	5NP	N04-C08-C12-C17
4	F	606	5NP	N04-C08-C12-C18

There are no ring outliers.

1 monomer is involved in 3 short contacts:

Mol	Chain	Res	Type	Clashes	Symm-Clashes
4	F	606	5NP	3	0

The following is a two-dimensional graphical depiction of Mogul quality analysis of bond lengths, bond angles, torsion angles, and ring geometry for all instances of the Ligand of Interest. In addition, ligands with molecular weight > 250 and outliers as shown on the validation Tables will also be included. For torsion angles, if less than 5% of the Mogul distribution of torsion angles is within 10 degrees of the torsion angle in question, then that torsion angle is considered an outlier. Any bond that is central to one or more torsion angles identified as an outlier by Mogul will be highlighted in the graph. For rings, the root-mean-square deviation (RMSD) between the ring in question and similar rings identified by Mogul is calculated over all ring torsion angles. If the average RMSD is greater than 60 degrees and the minimal RMSD between the ring in question and any Mogul-identified rings is also greater than 60 degrees, then that ring is considered an outlier. The outliers are highlighted in purple. The color gray indicates Mogul did not find sufficient equivalents in the CSD to analyse the geometry.



5.7 Other polymers [i](#)

There are no such residues in this entry.

5.8 Polymer linkage issues [i](#)

There are no chain breaks in this entry.

6 Fit of model and data [i](#)

6.1 Protein, DNA and RNA chains [i](#)

In the following table, the column labelled ‘#RSRZ> 2’ contains the number (and percentage) of RSRZ outliers, followed by percent RSRZ outliers for the chain as percentile scores relative to all X-ray entries and entries of similar resolution. The OWAB column contains the minimum, median, 95th percentile and maximum values of the occupancy-weighted average B-factor per residue. The column labelled ‘Q< 0.9’ lists the number of (and percentage) of residues with an average occupancy less than 0.9.

Mol	Chain	Analysed	<RSRZ>	#RSRZ>2	OWAB(Å ²)	Q<0.9
1	F	422/568 (74%)	0.19	18 (4%) 35 42	33, 61, 115, 139	0

All (18) RSRZ outliers are listed below:

Mol	Chain	Res	Type	RSRZ
1	F	63	ASN	5.0
1	F	203	LEU	5.0
1	F	197	ASN	3.9
1	F	173	SER	3.3
1	F	200	ASP	3.0
1	F	199	ILE	2.8
1	F	293	LYS	2.7
1	F	172	LEU	2.5
1	F	83	LEU	2.5
1	F	221	ILE	2.4
1	F	76	VAL	2.3
1	F	223	PHE	2.3
1	F	294	GLU	2.3
1	F	198	TYR	2.2
1	F	65	LYS	2.2
1	F	363	ASN	2.1
1	F	505	PHE	2.1
1	F	171	LEU	2.0

6.2 Non-standard residues in protein, DNA, RNA chains [i](#)

There are no non-standard protein/DNA/RNA residues in this entry.

6.3 Carbohydrates [i](#)

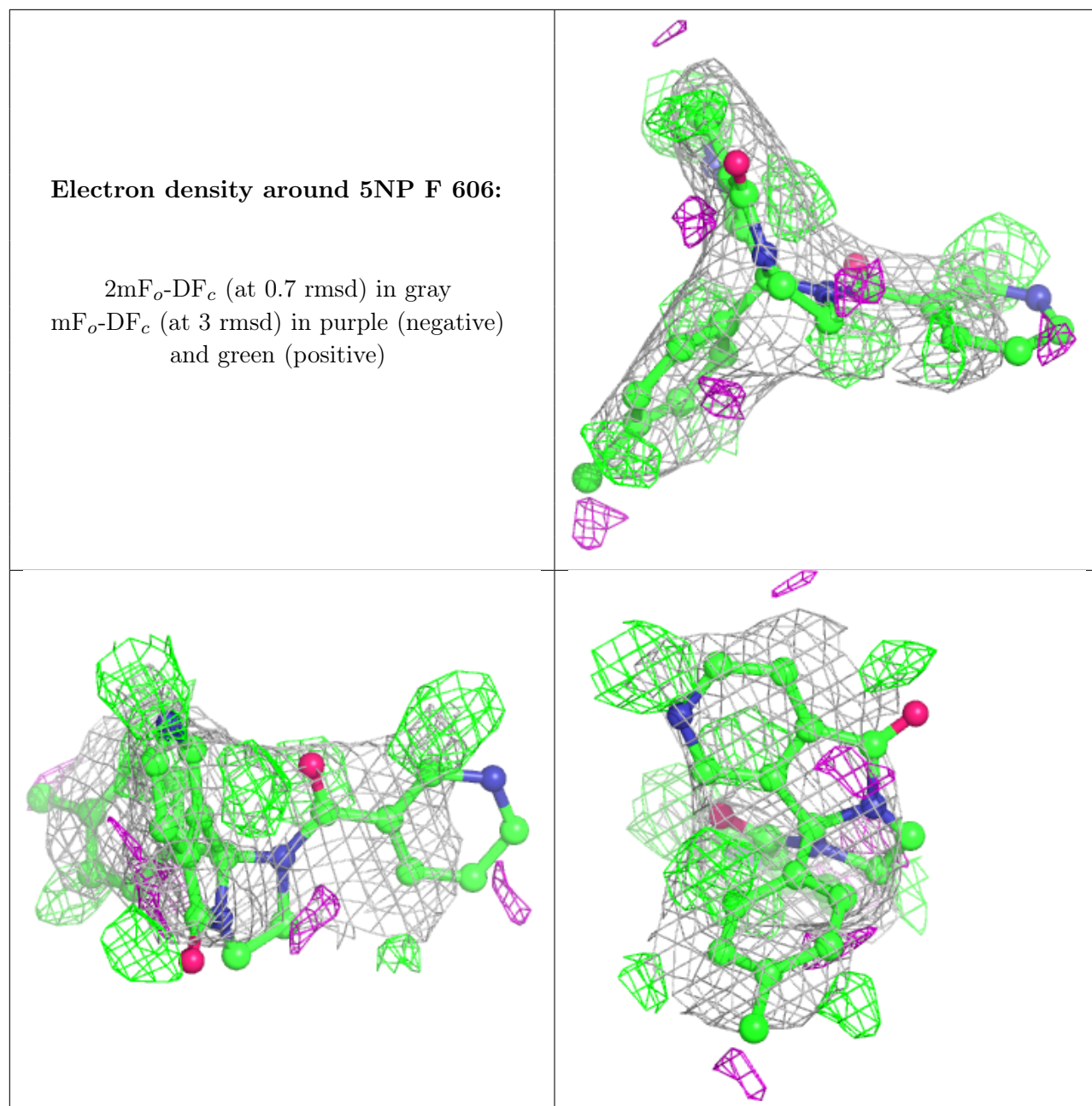
There are no monosaccharides in this entry.

6.4 Ligands [i](#)

In the following table, the Atoms column lists the number of modelled atoms in the group and the number defined in the chemical component dictionary. The B-factors column lists the minimum, median, 95th percentile and maximum values of B factors of atoms in the group. The column labelled 'Q<0.9' lists the number of atoms with occupancy less than 0.9.

Mol	Type	Chain	Res	Atoms	RSCC	RSR	B-factors(Å ²)	Q<0.9
3	SO4	F	603	5/5	0.75	0.42	168,168,169,169	0
4	5NP	F	606	28/28	0.80	0.41	70,72,73,75	28
3	SO4	F	602	5/5	0.81	0.26	132,132,133,133	0
3	SO4	F	605	5/5	0.83	0.22	139,139,140,140	0
3	SO4	F	604	5/5	0.87	0.36	161,161,162,162	0
2	NHE	F	601	13/13	0.96	0.23	68,69,79,119	0

The following is a graphical depiction of the model fit to experimental electron density of all instances of the Ligand of Interest. In addition, ligands with molecular weight > 250 and outliers as shown on the geometry validation Tables will also be included. Each fit is shown from different orientation to approximate a three-dimensional view.



6.5 Other polymers [i](#)

There are no such residues in this entry.