



Full wwPDB X-ray Structure Validation Report ⓘ

Nov 21, 2023 – 01:27 AM JST

PDB ID : 7E7V
Title : Crystal structure of RSL mutant in complex with sugar Ligand
Authors : Li, L.; Chen, G.S.
Deposited on : 2021-02-28
Resolution : 1.61 Å(reported)

This is a Full wwPDB X-ray Structure Validation Report for a publicly released PDB entry.

We welcome your comments at validation@mail.wwpdb.org

A user guide is available at

<https://www.wwpdb.org/validation/2017/XrayValidationReportHelp>

with specific help available everywhere you see the ⓘ symbol.

The types of validation reports are described at

<http://www.wwpdb.org/validation/2017/FAQs#types>.

The following versions of software and data (see [references ⓘ](#)) were used in the production of this report:

MolProbity : 4.02b-467
Mogul : 1.8.5 (274361), CSD as541be (2020)
Xtriage (Phenix) : 1.13
EDS : 2.36
buster-report : 1.1.7 (2018)
Percentile statistics : 20191225.v01 (using entries in the PDB archive December 25th 2019)
Refmac : 5.8.0158
CCP4 : 7.0.044 (Gargrove)
Ideal geometry (proteins) : Engh & Huber (2001)
Ideal geometry (DNA, RNA) : Parkinson et al. (1996)
Validation Pipeline (wwPDB-VP) : 2.36

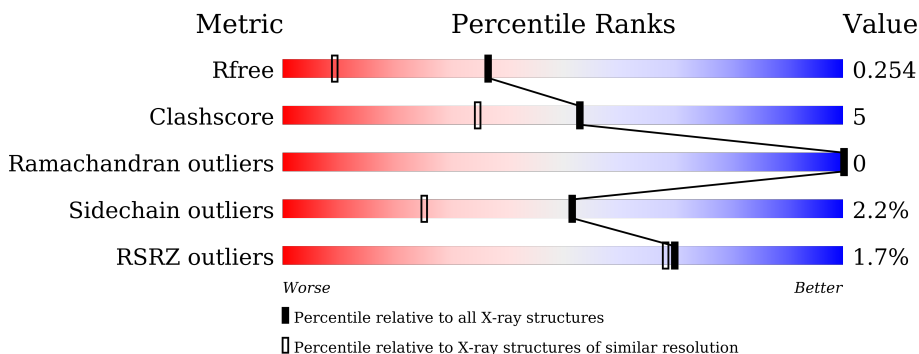
1 Overall quality at a glance

The following experimental techniques were used to determine the structure:

X-RAY DIFFRACTION

The reported resolution of this entry is 1.61 Å.

Percentile scores (ranging between 0-100) for global validation metrics of the entry are shown in the following graphic. The table shows the number of entries on which the scores are based.



Metric	Whole archive (#Entries)	Similar resolution (#Entries, resolution range(Å))
R_{free}	130704	4693 (1.64-1.60)
Clashscore	141614	5002 (1.64-1.60)
Ramachandran outliers	138981	4888 (1.64-1.60)
Sidechain outliers	138945	4887 (1.64-1.60)
RSRZ outliers	127900	4609 (1.64-1.60)

The table below summarises the geometric issues observed across the polymeric chains and their fit to the electron density. The red, orange, yellow and green segments of the lower bar indicate the fraction of residues that contain outliers for ≥ 3 , 2, 1 and 0 types of geometric quality criteria respectively. A grey segment represents the fraction of residues that are not modelled. The numeric value for each fraction is indicated below the corresponding segment, with a dot representing fractions $\leq 5\%$. The upper red bar (where present) indicates the fraction of residues that have poor fit to the electron density. The numeric value is given above the bar.

Mol	Chain	Length	Quality of chain
1	A	272	
1	B	272	
1	C	272	

The following table lists non-polymeric compounds, carbohydrate monomers and non-standard residues in protein, DNA, RNA chains that are outliers for geometric or electron-density-fit criteria:

Mol	Type	Chain	Res	Chirality	Geometry	Clashes	Electron density
3	GOL	B	304	-	-	X	-

2 Entry composition i

There are 4 unique types of molecules in this entry. The entry contains 6979 atoms, of which 0 are hydrogens and 0 are deuteriums.

In the tables below, the ZeroOcc column contains the number of atoms modelled with zero occupancy, the AltConf column contains the number of residues with at least one atom in alternate conformation and the Trace column contains the number of residues modelled with at most 2 atoms.

- Molecule 1 is a protein called Fucose-binding lectin protein, Fucose-binding lectin protein, Fucose-binding lectin protein.

Mol	Chain	Residues	Atoms					ZeroOcc	AltConf	Trace
			Total	C	N	O	S			
1	A	271	2041	1285	340	410	6	0	0	0
1	B	270	2031	1279	339	407	6	0	0	0
1	C	267	2015	1270	336	403	6	0	0	0

There are 54 discrepancies between the modelled and reference sequences:

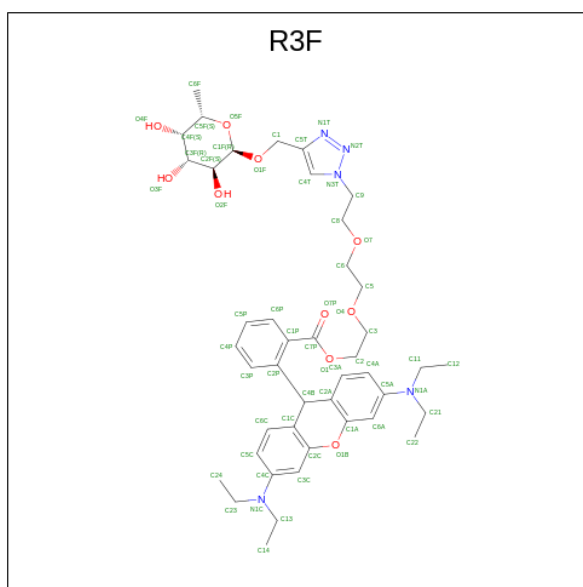
Chain	Residue	Modelled	Actual	Comment	Reference
A	17	ALA	ARG	engineered mutation	UNP A0A0S4TLR1
A	88	SER	-	linker	UNP A0A0S4TLR1
A	89	SER	-	linker	UNP A0A0S4TLR1
A	90	THR	-	linker	UNP A0A0S4TLR1
A	91	VAL	-	linker	UNP A0A0S4TLR1
A	92	PRO	-	linker	UNP A0A0S4TLR1
A	93	GLY	-	linker	UNP A0A0S4TLR1
A	94	ASP	-	linker	UNP A0A0S4TLR1
A	108	ALA	ARG	engineered mutation	UNP A0A0S4TLR1
A	153	ALA	ARG	engineered mutation	UNP A0A0S4TLR1
A	179	SER	-	linker	UNP A0A0S4TLR1
A	180	SER	-	linker	UNP A0A0S4TLR1
A	181	THR	-	linker	UNP A0A0S4TLR1
A	182	VAL	-	linker	UNP A0A0S4TLR1
A	183	PRO	-	linker	UNP A0A0S4TLR1
A	184	GLY	-	linker	UNP A0A0S4TLR1
A	185	ASP	-	linker	UNP A0A0S4TLR1
A	244	ALA	ARG	engineered mutation	UNP A0A0S4TLR1
B	17	ALA	ARG	engineered mutation	UNP A0A0S4TLR1
B	88	SER	-	linker	UNP A0A0S4TLR1
B	89	SER	-	linker	UNP A0A0S4TLR1
B	90	THR	-	linker	UNP A0A0S4TLR1

Continued on next page...

Continued from previous page...

Chain	Residue	Modelled	Actual	Comment	Reference
B	91	VAL	-	linker	UNP A0A0S4TLR1
B	92	PRO	-	linker	UNP A0A0S4TLR1
B	93	GLY	-	linker	UNP A0A0S4TLR1
B	94	ASP	-	linker	UNP A0A0S4TLR1
B	108	ALA	ARG	engineered mutation	UNP A0A0S4TLR1
B	153	ALA	ARG	engineered mutation	UNP A0A0S4TLR1
B	179	SER	-	linker	UNP A0A0S4TLR1
B	180	SER	-	linker	UNP A0A0S4TLR1
B	181	THR	-	linker	UNP A0A0S4TLR1
B	182	VAL	-	linker	UNP A0A0S4TLR1
B	183	PRO	-	linker	UNP A0A0S4TLR1
B	184	GLY	-	linker	UNP A0A0S4TLR1
B	185	ASP	-	linker	UNP A0A0S4TLR1
B	244	ALA	ARG	engineered mutation	UNP A0A0S4TLR1
C	17	ALA	ARG	engineered mutation	UNP A0A0S4TLR1
C	88	SER	-	linker	UNP A0A0S4TLR1
C	89	SER	-	linker	UNP A0A0S4TLR1
C	90	THR	-	linker	UNP A0A0S4TLR1
C	91	VAL	-	linker	UNP A0A0S4TLR1
C	92	PRO	-	linker	UNP A0A0S4TLR1
C	93	GLY	-	linker	UNP A0A0S4TLR1
C	94	ASP	-	linker	UNP A0A0S4TLR1
C	108	ALA	ARG	engineered mutation	UNP A0A0S4TLR1
C	153	ALA	ARG	engineered mutation	UNP A0A0S4TLR1
C	179	SER	-	linker	UNP A0A0S4TLR1
C	180	SER	-	linker	UNP A0A0S4TLR1
C	181	THR	-	linker	UNP A0A0S4TLR1
C	182	VAL	-	linker	UNP A0A0S4TLR1
C	183	PRO	-	linker	UNP A0A0S4TLR1
C	184	GLY	-	linker	UNP A0A0S4TLR1
C	185	ASP	-	linker	UNP A0A0S4TLR1
C	244	ALA	ARG	engineered mutation	UNP A0A0S4TLR1

- Molecule 2 is 2-[2-[2-[4-[(2R,3S,4R,5S,6S)-6-methyl-3,4,5-tris(oxidanyl)oxan-2-yl]oxymethyl]-1,2,3-triazol-1-yl]ethoxy]ethoxy]ethyl 2-[3,6-bis(diethylamino)-9H-xanthen-9-yl]benzoate (three-letter code: R3F) (formula: C₄₃H₅₇N₅O₁₀) (labeled as "Ligand of Interest" by depositor).



Mol	Chain	Residues	Atoms			ZeroOcc	AltConf	
			Total	C	N			O
2	A	1	58	43	5	10	0	0
2	A	1	58	43	5	10	0	0
2	B	1	58	43	5	10	0	0
2	B	1	58	43	5	10	0	0
2	C	1	58	43	5	10	0	0
2	C	1	58	43	5	10	0	0

- Molecule 3 is GLYCEROL (three-letter code: GOL) (formula: C₃H₈O₃).



Mol	Chain	Residues	Atoms	ZeroOcc	AltConf
3	A	1	Total C O 6 3 3	0	0
3	A	1	Total C O 6 3 3	0	0
3	A	1	Total C O 6 3 3	0	0
3	A	1	Total C O 6 3 3	0	0
3	B	1	Total C O 6 3 3	0	0
3	B	1	Total C O 6 3 3	0	0
3	B	1	Total C O 6 3 3	0	0
3	B	1	Total C O 6 3 3	0	0
3	C	1	Total C O 6 3 3	0	0
3	C	1	Total C O 6 3 3	0	0
3	C	1	Total C O 6 3 3	0	0
3	C	1	Total C O 6 3 3	0	0

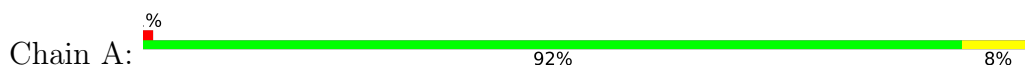
- Molecule 4 is water.

Mol	Chain	Residues	Atoms		ZeroOcc	AltConf
4	A	180	Total 180	O 180	0	0
4	B	164	Total 164	O 164	0	0
4	C	128	Total 128	O 128	0	0

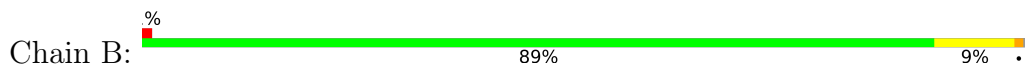
3 Residue-property plots [i](#)

These plots are drawn for all protein, RNA, DNA and oligosaccharide chains in the entry. The first graphic for a chain summarises the proportions of the various outlier classes displayed in the second graphic. The second graphic shows the sequence view annotated by issues in geometry and electron density. Residues are color-coded according to the number of geometric quality criteria for which they contain at least one outlier: green = 0, yellow = 1, orange = 2 and red = 3 or more. A red dot above a residue indicates a poor fit to the electron density ($RSRZ > 2$). Stretches of 2 or more consecutive residues without any outlier are shown as a green connector. Residues present in the sample, but not in the model, are shown in grey.

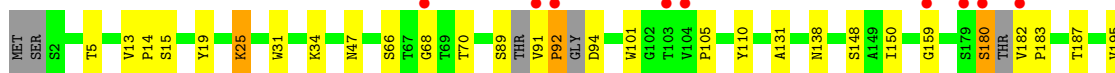
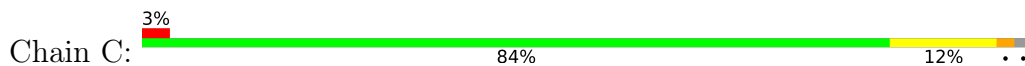
- Molecule 1: Fucose-binding lectin protein,Fucose-binding lectin protein,Fucose-binding lectin protein



- Molecule 1: Fucose-binding lectin protein,Fucose-binding lectin protein,Fucose-binding lectin protein



- Molecule 1: Fucose-binding lectin protein,Fucose-binding lectin protein,Fucose-binding lectin protein



4 Data and refinement statistics i

Property	Value	Source
Space group	P 1 21 1	Depositor
Cell constants a, b, c, α , β , γ	43.49Å 161.52Å 54.14Å 90.00° 91.53° 90.00°	Depositor
Resolution (Å)	80.76 – 1.61 80.76 – 1.61	Depositor EDS
% Data completeness (in resolution range)	97.5 (80.76-1.61) 97.5 (80.76-1.61)	Depositor EDS
R_{merge}	0.08	Depositor
R_{sym}	(Not available)	Depositor
$\langle I/\sigma(I) \rangle$ ¹	2.01 (at 1.61Å)	Xtrriage
Refinement program	REFMAC 5.8.0238	Depositor
R, R_{free}	0.218 , 0.248 0.226 , 0.254	Depositor DCC
R_{free} test set	4739 reflections (5.04%)	wwPDB-VP
Wilson B-factor (Å ²)	16.4	Xtrriage
Anisotropy	0.123	Xtrriage
Bulk solvent k_{sol} (e/Å ³), B_{sol} (Å ²)	0.37 , 47.3	EDS
L-test for twinning ²	$\langle L \rangle = 0.51$, $\langle L^2 \rangle = 0.35$	Xtrriage
Estimated twinning fraction	0.022 for h,-k,-l	Xtrriage
F_o, F_c correlation	0.92	EDS
Total number of atoms	6979	wwPDB-VP
Average B, all atoms (Å ²)	23.0	wwPDB-VP

Xtrriage's analysis on translational NCS is as follows: *The analyses of the Patterson function reveals a significant off-origin peak that is 23.68 % of the origin peak, indicating pseudo-translational symmetry. The chance of finding a peak of this or larger height randomly in a structure without pseudo-translational symmetry is equal to 4.4486e-03. The detected translational NCS is most likely also responsible for the elevated intensity ratio.*

¹Intensities estimated from amplitudes.

²Theoretical values of $\langle |L| \rangle$, $\langle L^2 \rangle$ for acentric reflections are 0.5, 0.333 respectively for untwinned datasets, and 0.375, 0.2 for perfectly twinned datasets.

5 Model quality [i](#)

5.1 Standard geometry [i](#)

Bond lengths and bond angles in the following residue types are not validated in this section: GOL, R3F

The Z score for a bond length (or angle) is the number of standard deviations the observed value is removed from the expected value. A bond length (or angle) with $|Z| > 5$ is considered an outlier worth inspection. RMSZ is the root-mean-square of all Z scores of the bond lengths (or angles).

Mol	Chain	Bond lengths		Bond angles	
		RMSZ	# $ Z > 5$	RMSZ	# $ Z > 5$
1	A	0.81	0/2108	0.97	0/2906
1	B	0.83	0/2097	0.99	1/2888 (0.0%)
1	C	0.82	1/2078 (0.0%)	0.99	2/2859 (0.1%)
All	All	0.82	1/6283 (0.0%)	0.99	3/8653 (0.0%)

Chiral center outliers are detected by calculating the chiral volume of a chiral center and verifying if the center is modelled as a planar moiety or with the opposite hand. A planarity outlier is detected by checking planarity of atoms in a peptide group, atoms in a mainchain group or atoms of a sidechain that are expected to be planar.

Mol	Chain	#Chirality outliers	#Planarity outliers
1	C	0	1

All (1) bond length outliers are listed below:

Mol	Chain	Res	Type	Atoms	Z	Observed(Å)	Ideal(Å)
1	C	255	GLU	CD-OE1	5.02	1.31	1.25

All (3) bond angle outliers are listed below:

Mol	Chain	Res	Type	Atoms	Z	Observed(°)	Ideal(°)
1	B	168	ASP	CB-CA-C	7.12	124.65	110.40
1	C	110	TYR	CB-CG-CD1	-6.14	117.31	121.00
1	C	92	PRO	N-CA-CB	5.91	110.39	103.30

There are no chirality outliers.

All (1) planarity outliers are listed below:

Mol	Chain	Res	Type	Group
1	C	68	GLY	Peptide

5.2 Too-close contacts [i](#)

In the following table, the Non-H and H(model) columns list the number of non-hydrogen atoms and hydrogen atoms in the chain respectively. The H(added) column lists the number of hydrogen atoms added and optimized by MolProbity. The Clashes column lists the number of clashes within the asymmetric unit, whereas Symm-Clashes lists symmetry-related clashes.

Mol	Chain	Non-H	H(model)	H(added)	Clashes	Symm-Clashes
1	A	2041	0	1872	13	0
1	B	2031	0	1858	21	0
1	C	2015	0	1838	21	0
2	A	116	0	0	7	0
2	B	116	0	0	3	0
2	C	116	0	0	2	0
3	A	24	0	32	0	0
3	B	24	0	32	4	0
3	C	24	0	32	0	0
4	A	180	0	0	1	0
4	B	164	0	0	2	0
4	C	128	0	0	5	0
All	All	6979	0	5664	66	0

The all-atom clashscore is defined as the number of clashes found per 1000 atoms (including hydrogen atoms). The all-atom clashscore for this structure is 5.

All (66) close contacts within the same asymmetric unit are listed below, sorted by their clash magnitude.

Atom-1	Atom-2	Interatomic distance (Å)	Clash overlap (Å)
1:C:248:SER:OG	1:C:253:THR:HG22	1.78	0.82
1:C:207:LYS:HD2	4:C:480:HOH:O	1.86	0.74
1:B:172:TRP:HE1	3:B:304:GOL:C3	2.02	0.72
1:C:92:PRO:O	1:C:94:ASP:N	2.25	0.70
1:A:182:VAL:HB	1:A:183:PRO:HD2	1.74	0.69
1:C:253:THR:HG1	1:C:268:TYR:HE2	1.42	0.66
2:A:302:R3F:N2T	2:A:302:R3F:O7	2.31	0.63
2:C:301:R3F:O7P	2:C:301:R3F:C3	2.44	0.63
1:B:159:GLY:O	1:B:183:PRO:HB3	2.01	0.61
1:B:172:TRP:HE1	3:B:304:GOL:H32	1.65	0.61
2:A:301:R3F:N2T	2:A:301:R3F:O7	2.37	0.58

Continued on next page...

Continued from previous page...

Atom-1	Atom-2	Interatomic distance (Å)	Clash overlap (Å)
1:B:180:SER:O	1:B:182:VAL:N	2.38	0.57
2:B:301:R3F:O2F	2:B:301:R3F:O7P	2.25	0.53
1:C:207:LYS:CD	4:C:480:HOH:O	2.49	0.53
2:A:302:R3F:N2T	2:A:302:R3F:C6	2.72	0.53
1:A:144:TRP:CE2	1:A:196:PRO:HG3	2.44	0.52
1:C:159:GLY:O	1:C:183:PRO:HB3	2.10	0.52
2:B:301:R3F:O7	2:B:301:R3F:C4T	2.59	0.51
2:A:302:R3F:C3A	2:A:302:R3F:O7P	2.58	0.51
1:B:10:TRP:CG	1:B:59:ILE:HD13	2.47	0.49
1:B:172:TRP:NE1	3:B:304:GOL:H32	2.26	0.49
1:A:104:VAL:N	1:A:105:PRO:HA	2.28	0.48
1:C:70:THR:HG23	4:C:470:HOH:O	2.13	0.48
1:B:146:VAL:O	1:B:146:VAL:HG23	2.14	0.48
1:C:25:LYS:HE3	4:C:512:HOH:O	2.12	0.48
1:C:180:SER:C	1:C:182:VAL:N	2.67	0.47
1:C:5:THR:HA	1:C:19:TYR:O	2.14	0.47
2:A:302:R3F:C3	2:A:302:R3F:N1T	2.77	0.47
1:B:168:ASP:HB2	4:B:499:HOH:O	2.14	0.47
1:B:172:TRP:NE1	3:B:304:GOL:C3	2.75	0.47
1:C:14:PRO:HG3	1:C:235:TRP:CE2	2.50	0.47
1:C:89:SER:O	1:C:91:VAL:HG11	2.15	0.47
1:C:138:ASN:ND2	1:C:187:THR:H	2.14	0.45
1:B:202:THR:O	1:B:208:ILE:HA	2.15	0.45
1:B:216:LYS:HA	1:B:216:LYS:HD2	1.68	0.45
1:A:195:VAL:N	1:A:196:PRO:HA	2.31	0.44
1:A:73:GLU:HB2	1:A:86:TYR:HB3	1.99	0.44
1:B:42:ASN:OD1	4:B:401:HOH:O	2.21	0.44
1:C:13:VAL:N	1:C:14:PRO:HA	2.32	0.44
1:A:144:TRP:CD2	1:A:196:PRO:HG3	2.52	0.44
2:A:302:R3F:N1T	2:A:302:R3F:O4	2.51	0.44
1:A:10:TRP:CG	1:A:59:ILE:HD13	2.53	0.44
1:B:144:TRP:CE2	1:B:196:PRO:HG3	2.53	0.43
1:C:15:SER:HA	1:C:31:TRP:O	2.18	0.43
1:A:31:TRP:CE2	1:A:33:GLY:HA2	2.55	0.42
1:B:13:VAL:N	1:B:14:PRO:HA	2.33	0.42
1:C:101:TRP:CG	1:C:150:ILE:HD13	2.54	0.42
1:C:47:ASN:HB3	1:C:66:SER:HB2	2.00	0.42
1:A:31:TRP:NE1	1:A:33:GLY:HA2	2.34	0.42
2:A:302:R3F:O7P	2:A:302:R3F:C2A	2.68	0.42
1:B:143:SER:HB2	1:B:150:ILE:HD11	2.01	0.42
1:B:95:GLN:OE1	1:B:138:ASN:HA	2.20	0.41

Continued on next page...

Continued from previous page...

Atom-1	Atom-2	Interatomic distance (Å)	Clash overlap (Å)
1:B:195:VAL:N	1:B:196:PRO:HA	2.34	0.41
2:B:301:R3F:C4T	2:B:301:R3F:C3	2.98	0.41
1:B:53:TRP:CZ2	1:B:105:PRO:HG3	2.56	0.41
1:A:94:ASP:OD1	4:A:401:HOH:O	2.22	0.41
1:C:195:VAL:N	1:C:196:PRO:HA	2.36	0.41
1:A:69:THR:OG1	1:C:131:ALA:HB2	2.21	0.40
1:C:258:TRP:CZ3	1:C:262:GLY:HA2	2.56	0.40
1:B:20:THR:O	1:B:26:ILE:HA	2.21	0.40
1:B:159:GLY:O	1:B:183:PRO:CB	2.67	0.40
2:C:302:R3F:C5	2:C:302:R3F:C4T	3.00	0.40
1:A:13:VAL:N	1:A:14:PRO:HA	2.37	0.40
1:A:202:THR:O	1:A:208:ILE:HA	2.21	0.40
1:C:207:LYS:CG	4:C:480:HOH:O	2.69	0.40
1:B:123:ASP:OD2	1:B:128:TYR:OH	2.30	0.40

There are no symmetry-related clashes.

5.3 Torsion angles [i](#)

5.3.1 Protein backbone [i](#)

In the following table, the Percentiles column shows the percent Ramachandran outliers of the chain as a percentile score with respect to all X-ray entries followed by that with respect to entries of similar resolution.

The Analysed column shows the number of residues for which the backbone conformation was analysed, and the total number of residues.

Mol	Chain	Analysed	Favoured	Allowed	Outliers	Percentiles	
1	A	269/272 (99%)	260 (97%)	9 (3%)	0	100	100
1	B	266/272 (98%)	259 (97%)	7 (3%)	0	100	100
1	C	259/272 (95%)	254 (98%)	5 (2%)	0	100	100
All	All	794/816 (97%)	773 (97%)	21 (3%)	0	100	100

There are no Ramachandran outliers to report.

5.3.2 Protein sidechains [i](#)

In the following table, the Percentiles column shows the percent sidechain outliers of the chain as a percentile score with respect to all X-ray entries followed by that with respect to entries of similar resolution.

The Analysed column shows the number of residues for which the sidechain conformation was analysed, and the total number of residues.

Mol	Chain	Analysed	Rotameric	Outliers	Percentiles	
1	A	210/211 (100%)	208 (99%)	2 (1%)	76	60
1	B	208/211 (99%)	204 (98%)	4 (2%)	57	32
1	C	206/211 (98%)	198 (96%)	8 (4%)	32	9
All	All	624/633 (99%)	610 (98%)	14 (2%)	52	25

All (14) residues with a non-rotameric sidechain are listed below:

Mol	Chain	Res	Type
1	A	161	THR
1	A	216	LYS
1	B	14	PRO
1	B	42	ASN
1	B	216	LYS
1	B	271	THR
1	C	25	LYS
1	C	34	LYS
1	C	105	PRO
1	C	148	SER
1	C	180	SER
1	C	196	PRO
1	C	207	LYS
1	C	239	SER

Sometimes sidechains can be flipped to improve hydrogen bonding and reduce clashes. All (2) such sidechains are listed below:

Mol	Chain	Res	Type
1	B	133	ASN
1	C	138	ASN

5.3.3 RNA [i](#)

There are no RNA molecules in this entry.

5.4 Non-standard residues in protein, DNA, RNA chains [i](#)

There are no non-standard protein/DNA/RNA residues in this entry.

5.5 Carbohydrates [i](#)

There are no monosaccharides in this entry.

5.6 Ligand geometry [i](#)

18 ligands are modelled in this entry.

In the following table, the Counts columns list the number of bonds (or angles) for which Mogul statistics could be retrieved, the number of bonds (or angles) that are observed in the model and the number of bonds (or angles) that are defined in the Chemical Component Dictionary. The Link column lists molecule types, if any, to which the group is linked. The Z score for a bond length (or angle) is the number of standard deviations the observed value is removed from the expected value. A bond length (or angle) with $|Z| > 2$ is considered an outlier worth inspection. RMSZ is the root-mean-square of all Z scores of the bond lengths (or angles).

Mol	Type	Chain	Res	Link	Bond lengths			Bond angles		
					Counts	RMSZ	# Z > 2	Counts	RMSZ	# Z > 2
3	GOL	B	305	-	5,5,5	0.14	0	5,5,5	0.21	0
2	R3F	A	301	-	63,63,63	1.78	9 (14%)	80,87,87	2.04	15 (18%)
2	R3F	B	302	-	63,63,63	1.64	8 (12%)	80,87,87	1.90	14 (17%)
2	R3F	A	302	-	63,63,63	1.78	10 (15%)	80,87,87	2.26	20 (25%)
2	R3F	C	302	-	63,63,63	1.64	7 (11%)	80,87,87	2.00	15 (18%)
3	GOL	B	304	-	5,5,5	0.29	0	5,5,5	0.64	0
3	GOL	A	304	-	5,5,5	0.13	0	5,5,5	0.42	0
3	GOL	B	303	-	5,5,5	0.18	0	5,5,5	0.38	0
3	GOL	B	306	-	5,5,5	0.16	0	5,5,5	0.27	0
2	R3F	C	301	-	63,63,63	1.60	9 (14%)	80,87,87	2.08	19 (23%)
3	GOL	A	303	-	5,5,5	0.15	0	5,5,5	0.38	0
3	GOL	C	305	-	5,5,5	0.12	0	5,5,5	0.39	0
3	GOL	C	306	-	5,5,5	0.10	0	5,5,5	0.26	0
3	GOL	A	305	-	5,5,5	0.16	0	5,5,5	0.37	0
3	GOL	C	304	-	5,5,5	0.12	0	5,5,5	0.37	0
3	GOL	C	303	-	5,5,5	0.24	0	5,5,5	0.54	0
3	GOL	A	306	-	5,5,5	0.11	0	5,5,5	0.32	0
2	R3F	B	301	-	63,63,63	1.76	10 (15%)	80,87,87	1.76	14 (17%)

In the following table, the Chirals column lists the number of chiral outliers, the number of chiral centers analysed, the number of these observed in the model and the number defined in the

Chemical Component Dictionary. Similar counts are reported in the Torsion and Rings columns. '-' means no outliers of that kind were identified.

Mol	Type	Chain	Res	Link	Chirals	Torsions	Rings
3	GOL	B	305	-	-	1/4/4/4	-
2	R3F	A	301	-	-	19/43/73/73	0/6/6/6
2	R3F	B	302	-	-	11/43/73/73	0/6/6/6
2	R3F	A	302	-	-	23/43/73/73	0/6/6/6
2	R3F	C	302	-	-	13/43/73/73	0/6/6/6
3	GOL	B	304	-	-	2/4/4/4	-
3	GOL	A	304	-	-	0/4/4/4	-
3	GOL	B	303	-	-	0/4/4/4	-
3	GOL	B	306	-	-	0/4/4/4	-
2	R3F	C	301	-	-	11/43/73/73	0/6/6/6
3	GOL	A	303	-	-	0/4/4/4	-
3	GOL	C	305	-	-	4/4/4/4	-
3	GOL	C	306	-	-	0/4/4/4	-
3	GOL	A	305	-	-	0/4/4/4	-
3	GOL	C	304	-	-	1/4/4/4	-
3	GOL	C	303	-	-	2/4/4/4	-
3	GOL	A	306	-	-	0/4/4/4	-
2	R3F	B	301	-	-	20/43/73/73	0/6/6/6

All (53) bond length outliers are listed below:

Mol	Chain	Res	Type	Atoms	Z	Observed(Å)	Ideal(Å)
2	A	301	R3F	C1C-C4B	-5.97	1.42	1.52
2	B	302	R3F	C1C-C4B	-5.89	1.42	1.52
2	A	302	R3F	C2A-C4B	-5.83	1.42	1.52
2	A	301	R3F	C2A-C4B	-5.82	1.42	1.52
2	B	301	R3F	C1C-C4B	-5.82	1.42	1.52
2	C	302	R3F	C2A-C4B	-5.75	1.42	1.52
2	B	302	R3F	O1-C7P	5.69	1.47	1.33
2	B	301	R3F	C2A-C4B	-5.57	1.42	1.52
2	A	302	R3F	O1-C7P	5.46	1.47	1.33
2	C	301	R3F	C2A-C4B	-5.39	1.43	1.52
2	C	302	R3F	O1-C7P	5.39	1.47	1.33
2	C	302	R3F	C1C-C4B	-5.37	1.43	1.52
2	A	301	R3F	O1-C7P	5.36	1.47	1.33
2	A	302	R3F	C1C-C4B	-5.19	1.43	1.52
2	A	302	R3F	C4T-C5T	5.06	1.43	1.36
2	B	302	R3F	C2A-C4B	-5.06	1.43	1.52
2	A	301	R3F	C4T-C5T	5.06	1.43	1.36

Continued on next page...

Continued from previous page...

Mol	Chain	Res	Type	Atoms	Z	Observed(Å)	Ideal(Å)
2	C	301	R3F	C1C-C4B	-4.62	1.44	1.52
2	B	301	R3F	O1-C7P	4.50	1.44	1.33
2	B	301	R3F	C5T-N1T	4.39	1.39	1.34
2	C	301	R3F	O1-C7P	3.98	1.43	1.33
2	C	301	R3F	N1T-N2T	3.90	1.41	1.34
2	C	301	R3F	C4T-C5T	3.89	1.42	1.36
2	B	301	R3F	N1T-N2T	3.89	1.41	1.34
2	A	301	R3F	N2T-N3T	3.74	1.41	1.34
2	A	302	R3F	O1F-C1F	3.73	1.46	1.40
2	B	302	R3F	C1P-C2P	3.72	1.44	1.40
2	C	302	R3F	N1T-N2T	3.55	1.40	1.34
2	A	301	R3F	N1T-N2T	3.39	1.40	1.34
2	A	302	R3F	N2T-N3T	3.35	1.40	1.34
2	A	302	R3F	C1P-C2P	3.20	1.44	1.40
2	C	302	R3F	C4T-C5T	3.08	1.40	1.36
2	B	301	R3F	O1F-C1F	2.98	1.45	1.40
2	B	301	R3F	N2T-N3T	2.97	1.40	1.34
2	C	302	R3F	N2T-N3T	2.94	1.40	1.34
2	A	302	R3F	C5T-N1T	2.90	1.37	1.34
2	B	301	R3F	O3F-C3F	2.73	1.49	1.43
2	A	302	R3F	N1T-N2T	2.65	1.39	1.34
2	A	302	R3F	C1P-C7P	2.64	1.55	1.50
2	C	301	R3F	N2T-N3T	2.60	1.39	1.34
2	B	301	R3F	C1A-C2A	2.51	1.44	1.39
2	B	302	R3F	C4C-N1C	2.44	1.45	1.38
2	B	302	R3F	C5T-N1T	2.42	1.37	1.34
2	B	302	R3F	C4T-C5T	2.40	1.39	1.36
2	A	301	R3F	O1F-C1F	2.29	1.44	1.40
2	C	302	R3F	C1P-C2P	2.20	1.42	1.40
2	C	301	R3F	O1F-C1F	2.12	1.43	1.40
2	C	301	R3F	C5T-N1T	2.08	1.36	1.34
2	C	301	R3F	C4C-N1C	2.04	1.44	1.38
2	B	302	R3F	C5C-C4C	2.04	1.43	1.39
2	A	301	R3F	C2P-C4B	-2.03	1.50	1.53
2	B	301	R3F	C4T-C5T	2.03	1.39	1.36
2	A	301	R3F	C5T-N1T	2.02	1.36	1.34

All (97) bond angle outliers are listed below:

Mol	Chain	Res	Type	Atoms	Z	Observed(°)	Ideal(°)
2	A	301	R3F	C2A-C4B-C1C	9.10	119.40	105.83
2	A	301	R3F	N1T-N2T-N3T	8.45	113.69	107.31

Continued on next page...

Continued from previous page...

Mol	Chain	Res	Type	Atoms	Z	Observed(°)	Ideal(°)
2	C	301	R3F	N1T-N2T-N3T	8.30	113.57	107.31
2	C	302	R3F	C2A-C4B-C1C	8.06	117.85	105.83
2	A	302	R3F	C2A-C4B-C1C	8.03	117.80	105.83
2	A	302	R3F	N1T-N2T-N3T	7.75	113.15	107.31
2	C	302	R3F	O1-C7P-C1P	7.54	127.12	112.21
2	C	301	R3F	C2A-C4B-C1C	7.39	116.84	105.83
2	C	302	R3F	N1T-N2T-N3T	7.20	112.74	107.31
2	B	302	R3F	C2A-C4B-C1C	6.94	116.18	105.83
2	B	301	R3F	C2A-C4B-C1C	6.89	116.11	105.83
2	B	302	R3F	O1-C7P-C1P	6.86	125.78	112.21
2	C	301	R3F	O1-C7P-C1P	5.51	123.10	112.21
2	A	302	R3F	O1-C7P-C1P	5.39	122.87	112.21
2	A	302	R3F	O1-C7P-O7P	-5.26	113.00	123.67
2	B	301	R3F	N1T-N2T-N3T	5.16	111.21	107.31
2	A	302	R3F	C1F-O5F-C5F	-5.16	104.80	113.67
2	A	301	R3F	O1-C7P-C1P	5.15	122.39	112.21
2	C	301	R3F	C2-O1-C7P	-4.91	106.09	116.43
2	A	302	R3F	O1F-C1F-C2F	-4.85	100.74	108.30
2	A	301	R3F	C1-O1F-C1F	-4.75	104.86	113.31
2	B	302	R3F	N1T-N2T-N3T	4.32	110.57	107.31
2	B	302	R3F	C2P-C1P-C7P	4.28	127.68	121.71
2	A	302	R3F	C2-O1-C7P	4.13	125.13	116.43
2	C	302	R3F	C2P-C4B-C1C	3.99	126.59	113.32
2	B	301	R3F	O1-C7P-C1P	3.88	119.89	112.21
2	A	301	R3F	C3C-C4C-N1C	-3.87	117.17	121.33
2	B	302	R3F	C2-O1-C7P	3.84	124.52	116.43
2	B	301	R3F	O1-C7P-O7P	-3.82	115.92	123.67
2	A	302	R3F	C3C-C4C-N1C	-3.81	117.23	121.33
2	B	301	R3F	C1-C5T-C4T	-3.70	121.46	128.45
2	C	301	R3F	C1-C5T-C4T	-3.61	121.62	128.45
2	C	302	R3F	O1-C7P-O7P	-3.52	116.53	123.67
2	B	302	R3F	C6P-C1P-C7P	-3.47	111.55	118.66
2	C	301	R3F	C3P-C2P-C4B	-3.46	113.78	121.49
2	C	302	R3F	C9-N3T-C4T	3.35	137.69	129.82
2	C	301	R3F	O1-C7P-O7P	-3.32	116.94	123.67
2	A	301	R3F	O1-C7P-O7P	-3.32	116.94	123.67
2	C	302	R3F	C1-O1F-C1F	-3.31	107.43	113.31
2	A	302	R3F	C9-N3T-C4T	3.22	137.40	129.82
2	A	302	R3F	O5F-C1F-C2F	3.18	117.08	110.35
2	B	301	R3F	C3A-C2A-C4B	-3.17	121.11	126.14
2	A	301	R3F	C2C-C1C-C4B	-3.12	118.24	121.53
2	A	302	R3F	C3A-C2A-C4B	-3.06	121.28	126.14

Continued on next page...

Continued from previous page...

Mol	Chain	Res	Type	Atoms	Z	Observed(°)	Ideal(°)
2	A	302	R3F	C2P-C4B-C1C	3.05	123.48	113.32
2	B	302	R3F	C2P-C4B-C1C	3.03	123.41	113.32
2	C	301	R3F	C6P-C1P-C7P	-3.02	112.47	118.66
2	B	302	R3F	C5C-C4C-N1C	3.01	125.52	121.38
2	B	301	R3F	C2-O1-C7P	3.00	122.76	116.43
2	B	301	R3F	C3C-C4C-N1C	-2.99	118.12	121.33
2	B	301	R3F	O2F-C2F-C3F	-2.97	103.48	110.35
2	C	301	R3F	C2P-C1P-C7P	2.84	125.68	121.71
2	B	302	R3F	C2F-C3F-C4F	-2.82	105.91	110.82
2	C	302	R3F	C1-C5T-C4T	-2.81	123.14	128.45
2	B	302	R3F	O1-C7P-O7P	-2.80	117.99	123.67
2	C	302	R3F	C3A-C2A-C4B	-2.80	121.70	126.14
2	C	301	R3F	C1-O1F-C1F	-2.72	108.48	113.31
2	C	301	R3F	C3P-C2P-C1P	-2.66	115.75	118.83
2	A	302	R3F	C21-N1A-C11	2.59	121.31	116.34
2	B	301	R3F	C2P-C4B-C1C	2.58	121.92	113.32
2	B	301	R3F	C6C-C1C-C4B	-2.58	122.05	126.14
2	A	302	R3F	C4A-C5A-N1A	-2.57	117.84	121.38
2	B	301	R3F	C1-O1F-C1F	-2.57	108.74	113.31
2	B	301	R3F	C2P-C4B-C2A	2.55	121.81	113.32
2	C	301	R3F	C2P-C4B-C2A	2.55	121.80	113.32
2	C	301	R3F	C3A-C2A-C4B	-2.55	122.10	126.14
2	A	301	R3F	C21-N1A-C11	2.55	121.23	116.34
2	A	302	R3F	O1B-C1A-C6A	2.54	118.96	115.20
2	B	302	R3F	C3C-C4C-N1C	-2.53	118.62	121.33
2	A	302	R3F	O3F-C3F-C4F	2.52	116.19	110.35
2	B	302	R3F	C9-N3T-C4T	2.47	135.62	129.82
2	C	302	R3F	C2C-C1C-C4B	-2.43	118.97	121.53
2	C	302	R3F	O5F-C5F-C6F	2.40	111.88	106.70
2	A	301	R3F	C2P-C4B-C1C	2.38	121.24	113.32
2	C	301	R3F	C2P-C4B-C1C	2.37	121.20	113.32
2	C	301	R3F	O1-C2-C3	2.35	115.57	108.61
2	A	302	R3F	O5F-C5F-C4F	2.34	113.71	109.52
2	C	302	R3F	C3C-C4C-N1C	-2.32	118.84	121.33
2	B	302	R3F	O1-C2-C3	2.31	115.45	108.61
2	B	301	R3F	C23-N1C-C13	2.29	120.73	116.34
2	A	301	R3F	C1A-C2A-C4B	-2.28	119.12	121.53
2	C	301	R3F	C6F-C5F-C4F	2.24	117.21	113.07
2	A	301	R3F	C2-O1-C7P	2.22	121.10	116.43
2	A	302	R3F	C5C-C4C-N1C	2.17	124.37	121.38
2	A	301	R3F	C1-C5T-C4T	-2.15	124.39	128.45
2	C	301	R3F	O3F-C3F-C4F	2.14	115.31	110.35

Continued on next page...

Continued from previous page...

Mol	Chain	Res	Type	Atoms	Z	Observed(°)	Ideal(°)
2	C	302	R3F	C5C-C4C-N1C	2.14	124.33	121.38
2	B	302	R3F	C2P-C4B-C2A	2.13	120.40	113.32
2	C	301	R3F	C4T-N3T-N2T	-2.12	105.20	109.45
2	A	301	R3F	O3F-C3F-C4F	2.10	115.19	110.35
2	C	301	R3F	O1F-C1F-C2F	-2.09	105.04	108.30
2	A	302	R3F	C2C-C1C-C4B	-2.08	119.34	121.53
2	A	301	R3F	C5C-C4C-N1C	2.06	124.22	121.38
2	C	302	R3F	O1B-C1A-C2A	-2.03	119.58	122.38
2	A	302	R3F	C1-C5T-C4T	-2.03	124.61	128.45
2	C	302	R3F	O1B-C1A-C6A	2.01	118.18	115.20
2	A	301	R3F	C4T-N3T-N2T	-2.00	105.44	109.45

There are no chirality outliers.

All (107) torsion outliers are listed below:

Mol	Chain	Res	Type	Atoms
2	A	301	R3F	C6C-C1C-C4B-C2P
2	A	301	R3F	C6C-C1C-C4B-C2A
2	A	301	R3F	C3A-C2A-C4B-C2P
2	A	301	R3F	C3A-C2A-C4B-C1C
2	A	301	R3F	C3-C2-O1-C7P
2	A	301	R3F	C8-C9-N3T-C4T
2	A	301	R3F	C8-C9-N3T-N2T
2	A	302	R3F	C6C-C1C-C4B-C2P
2	A	302	R3F	C6C-C1C-C4B-C2A
2	A	302	R3F	C3A-C2A-C4B-C2P
2	A	302	R3F	C3A-C2A-C4B-C1C
2	A	302	R3F	C3-C2-O1-C7P
2	A	302	R3F	C8-C9-N3T-C4T
2	A	302	R3F	C8-C9-N3T-N2T
2	B	301	R3F	C6C-C1C-C4B-C2P
2	B	301	R3F	C6C-C1C-C4B-C2A
2	B	301	R3F	C3A-C2A-C4B-C2P
2	B	301	R3F	C3A-C2A-C4B-C1C
2	B	301	R3F	C8-C9-N3T-C4T
2	B	301	R3F	C8-C9-N3T-N2T
2	B	302	R3F	C1P-C7P-O1-C2
2	B	302	R3F	C6C-C1C-C4B-C2P
2	B	302	R3F	C6C-C1C-C4B-C2A
2	B	302	R3F	C3A-C2A-C4B-C2P
2	B	302	R3F	C3A-C2A-C4B-C1C
2	B	302	R3F	C3-C2-O1-C7P

Continued on next page...

Continued from previous page...

Mol	Chain	Res	Type	Atoms
2	B	302	R3F	O7-C8-C9-N3T
2	C	301	R3F	C6C-C1C-C4B-C2P
2	C	301	R3F	C6C-C1C-C4B-C2A
2	C	301	R3F	C3A-C2A-C4B-C2P
2	C	301	R3F	C3A-C2A-C4B-C1C
2	C	302	R3F	C6C-C1C-C4B-C2P
2	C	302	R3F	C6C-C1C-C4B-C2A
2	C	302	R3F	C3A-C2A-C4B-C2P
2	C	302	R3F	C3A-C2A-C4B-C1C
3	B	304	GOL	C1-C2-C3-O3
3	B	304	GOL	O2-C2-C3-O3
3	C	305	GOL	O1-C1-C2-C3
3	C	305	GOL	C1-C2-C3-O3
3	C	305	GOL	O2-C2-C3-O3
2	A	302	R3F	C1P-C7P-O1-C2
2	B	301	R3F	C3C-C4C-N1C-C23
2	A	302	R3F	O7P-C7P-O1-C2
2	B	302	R3F	O7P-C7P-O1-C2
2	C	302	R3F	C1P-C7P-O1-C2
2	A	301	R3F	C5C-C4C-N1C-C23
2	A	301	R3F	C3C-C4C-N1C-C13
2	A	302	R3F	C3C-C4C-N1C-C23
2	B	301	R3F	C5C-C4C-N1C-C13
2	B	301	R3F	C5C-C4C-N1C-C23
2	B	301	R3F	C3C-C4C-N1C-C13
2	C	302	R3F	O7P-C7P-O1-C2
2	A	302	R3F	C5C-C4C-N1C-C13
2	A	301	R3F	C5C-C4C-N1C-C13
2	A	301	R3F	C3C-C4C-N1C-C23
2	A	302	R3F	C5C-C4C-N1C-C23
2	C	302	R3F	C6-C5-O4-C3
2	A	301	R3F	C1P-C7P-O1-C2
2	A	302	R3F	C3C-C4C-N1C-C13
2	A	301	R3F	O7P-C7P-O1-C2
2	B	302	R3F	O4-C5-C6-O7
2	A	302	R3F	C12-C11-N1A-C5A
2	A	301	R3F	C22-C21-N1A-C11
2	A	302	R3F	C4A-C5A-N1A-C21
2	A	302	R3F	C6A-C5A-N1A-C21
2	A	302	R3F	C12-C11-N1A-C21
2	A	302	R3F	C6A-C5A-N1A-C11
2	A	302	R3F	C24-C23-N1C-C4C

Continued on next page...

Continued from previous page...

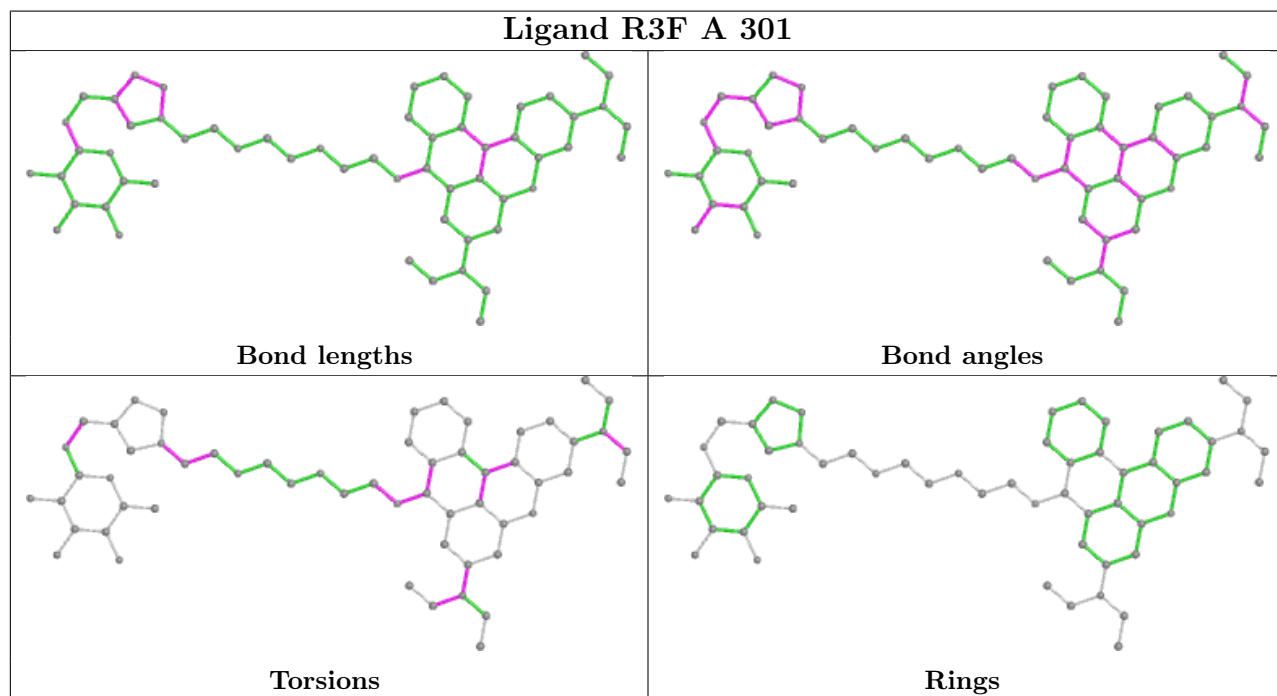
Mol	Chain	Res	Type	Atoms
2	A	302	R3F	O4-C5-C6-O7
2	A	302	R3F	C24-C23-N1C-C13
2	A	302	R3F	C4A-C5A-N1A-C11
3	B	305	GOL	C1-C2-C3-O3
3	C	303	GOL	O1-C1-C2-C3
2	A	301	R3F	O7-C8-C9-N3T
2	A	302	R3F	O7-C8-C9-N3T
2	A	301	R3F	C22-C21-N1A-C5A
2	C	301	R3F	C3-C2-O1-C7P
2	C	301	R3F	O4-C5-C6-O7
2	B	301	R3F	C12-C11-N1A-C5A
2	C	301	R3F	C1P-C7P-O1-C2
2	B	301	R3F	C12-C11-N1A-C21
2	B	301	R3F	O1-C2-C3-O4
3	C	304	GOL	C1-C2-C3-O3
2	C	302	R3F	C24-C23-N1C-C4C
2	B	302	R3F	C14-C13-N1C-C4C
2	B	302	R3F	C14-C13-N1C-C23
2	B	301	R3F	C6-C5-O4-C3
2	B	301	R3F	O4-C5-C6-O7
2	B	301	R3F	C2-C3-O4-C5
2	C	301	R3F	C2-C3-O4-C5
3	C	305	GOL	O1-C1-C2-O2
2	C	301	R3F	C22-C21-N1A-C5A
2	C	302	R3F	C9-C8-O7-C6
2	B	301	R3F	C5T-C1-O1F-C1F
2	C	302	R3F	C5-C6-O7-C8
2	C	301	R3F	C9-C8-O7-C6
2	C	302	R3F	C8-C9-N3T-N2T
2	C	301	R3F	C22-C21-N1A-C11
2	C	302	R3F	C2-C3-O4-C5
2	B	301	R3F	O7-C8-C9-N3T
2	C	302	R3F	O4-C5-C6-O7
2	B	301	R3F	C6A-C5A-N1A-C11
2	A	301	R3F	C5T-C1-O1F-C1F
2	B	301	R3F	C1P-C2P-C4B-C1C
3	C	303	GOL	O1-C1-C2-O2
2	A	301	R3F	C24-C23-N1C-C4C
2	A	301	R3F	C6P-C1P-C7P-O1

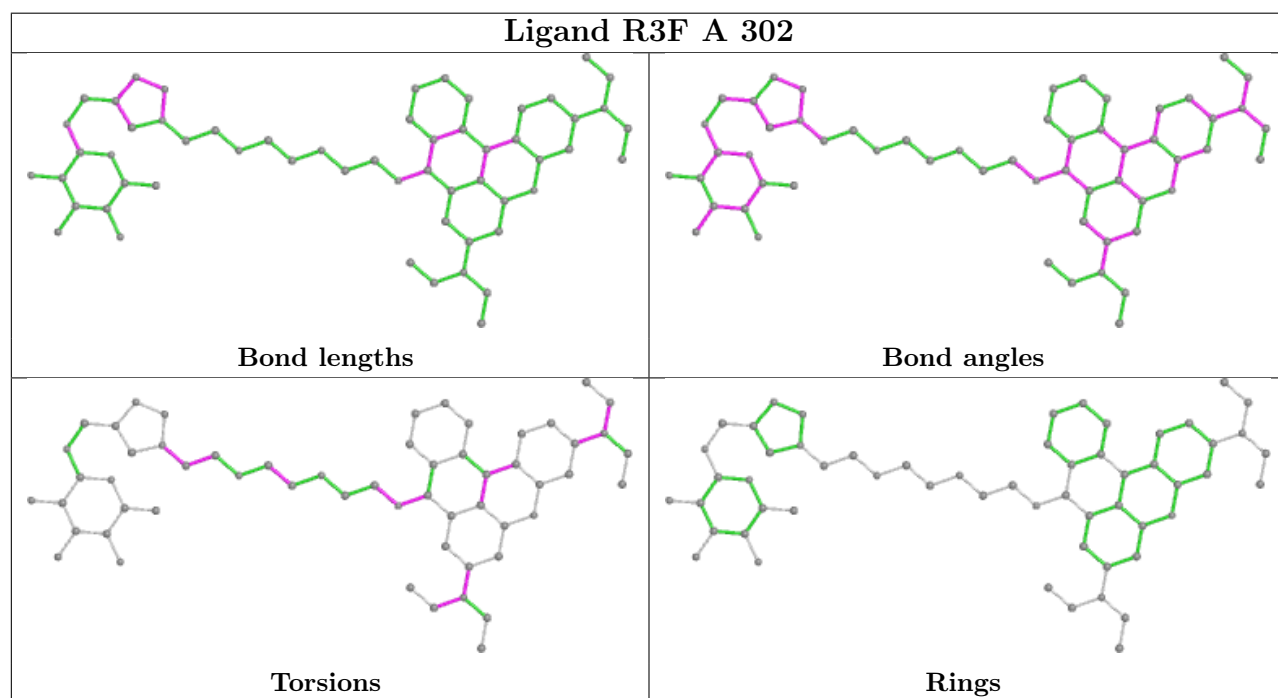
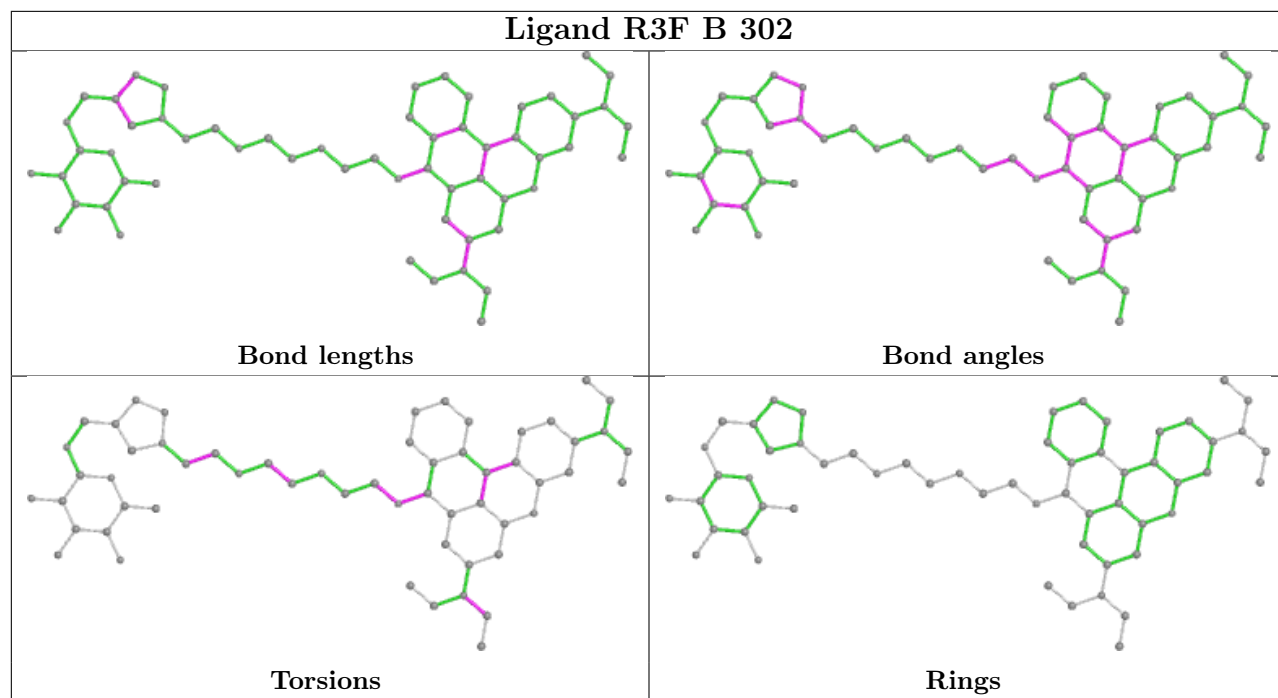
There are no ring outliers.

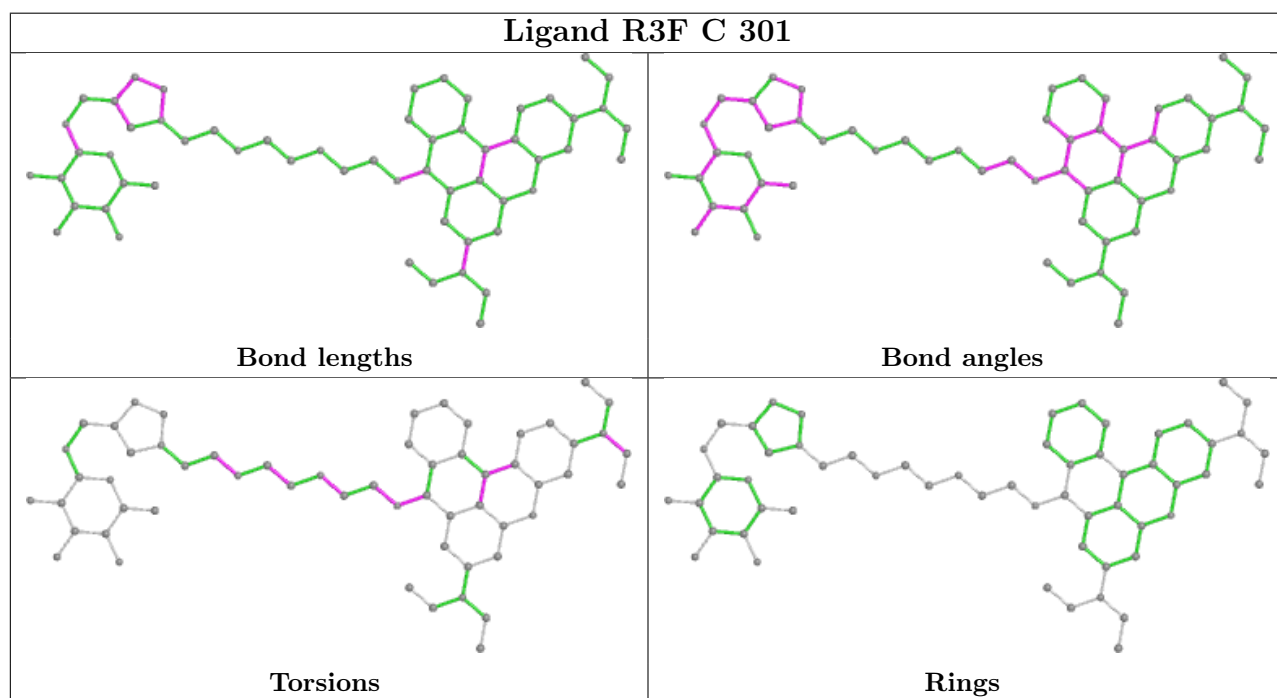
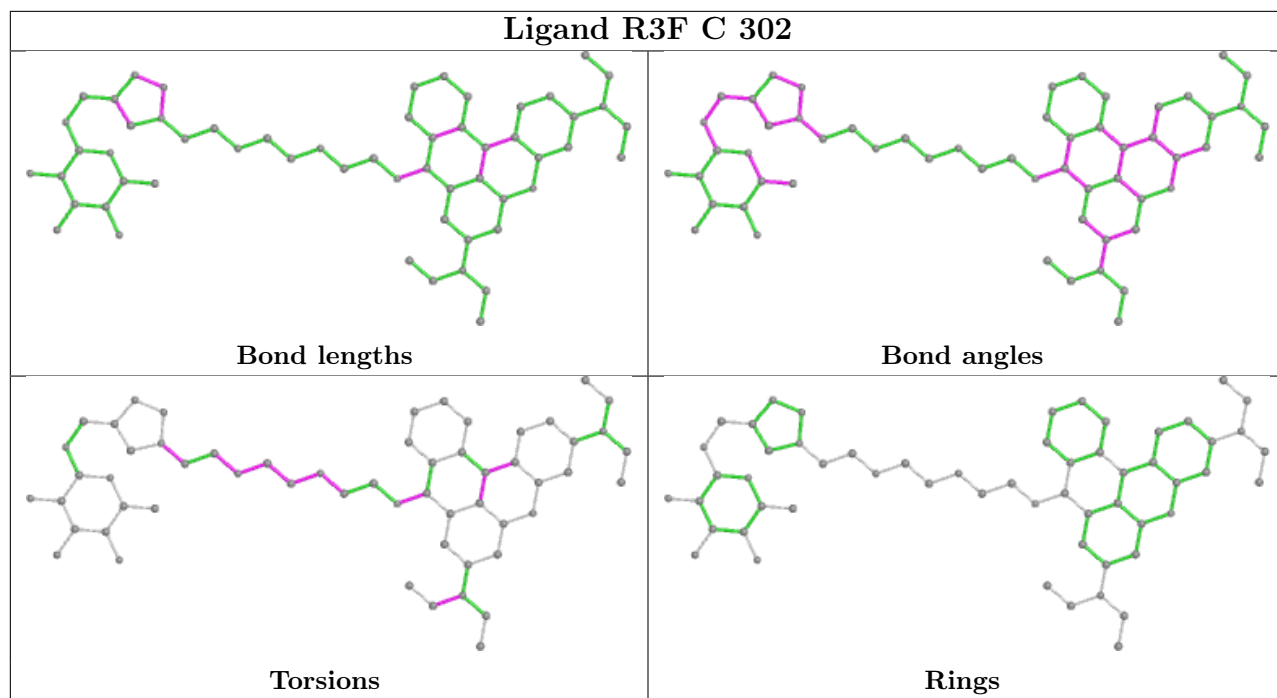
6 monomers are involved in 16 short contacts:

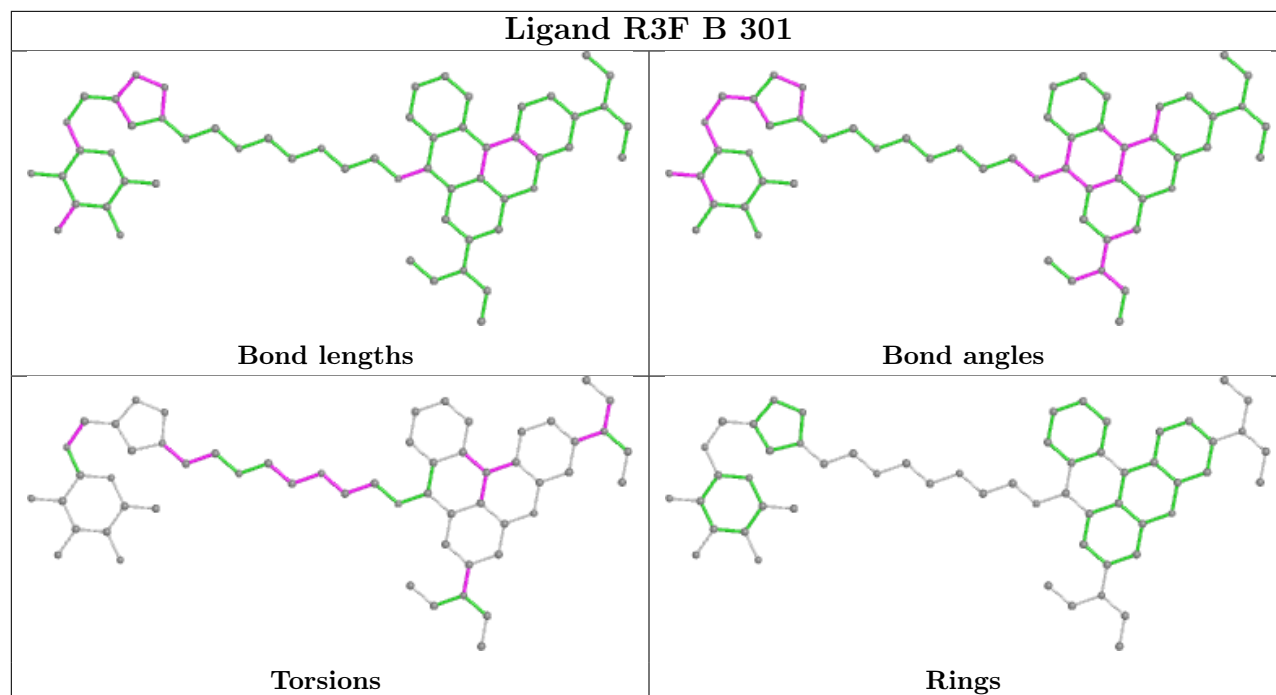
Mol	Chain	Res	Type	Clashes	Symm-Clashes
2	A	301	R3F	1	0
2	A	302	R3F	6	0
2	C	302	R3F	1	0
3	B	304	GOL	4	0
2	C	301	R3F	1	0
2	B	301	R3F	3	0

The following is a two-dimensional graphical depiction of Mogul quality analysis of bond lengths, bond angles, torsion angles, and ring geometry for all instances of the Ligand of Interest. In addition, ligands with molecular weight > 250 and outliers as shown on the validation Tables will also be included. For torsion angles, if less than 5% of the Mogul distribution of torsion angles is within 10 degrees of the torsion angle in question, then that torsion angle is considered an outlier. Any bond that is central to one or more torsion angles identified as an outlier by Mogul will be highlighted in the graph. For rings, the root-mean-square deviation (RMSD) between the ring in question and similar rings identified by Mogul is calculated over all ring torsion angles. If the average RMSD is greater than 60 degrees and the minimal RMSD between the ring in question and any Mogul-identified rings is also greater than 60 degrees, then that ring is considered an outlier. The outliers are highlighted in purple. The color gray indicates Mogul did not find sufficient equivalents in the CSD to analyse the geometry.









5.7 Other polymers [i](#)

There are no such residues in this entry.

5.8 Polymer linkage issues [i](#)

There are no chain breaks in this entry.

6 Fit of model and data [i](#)

6.1 Protein, DNA and RNA chains [i](#)

In the following table, the column labelled ‘#RSRZ > 2’ contains the number (and percentage) of RSRZ outliers, followed by percent RSRZ outliers for the chain as percentile scores relative to all X-ray entries and entries of similar resolution. The OWAB column contains the minimum, median, 95th percentile and maximum values of the occupancy-weighted average B-factor per residue. The column labelled ‘Q < 0.9’ lists the number of (and percentage) of residues with an average occupancy less than 0.9.

Mol	Chain	Analysed	<RSRZ>	#RSRZ>2	OWAB(Å ²)	Q<0.9
1	A	271/272 (99%)	-0.09	2 (0%) 87 87	9, 18, 32, 47	1 (0%)
1	B	270/272 (99%)	-0.00	3 (1%) 80 80	11, 19, 38, 47	1 (0%)
1	C	267/272 (98%)	0.15	9 (3%) 45 41	10, 23, 40, 54	0
All	All	808/816 (99%)	0.02	14 (1%) 70 68	9, 20, 38, 54	2 (0%)

All (14) RSRZ outliers are listed below:

Mol	Chain	Res	Type	RSRZ
1	C	103	THR	3.4
1	C	91	VAL	3.4
1	C	68	GLY	2.9
1	B	159	GLY	2.8
1	A	1	SER	2.5
1	B	168	ASP	2.5
1	C	182	VAL	2.4
1	C	180	SER	2.4
1	C	92	PRO	2.4
1	C	179	SER	2.3
1	A	180	SER	2.2
1	B	182	VAL	2.2
1	C	104	VAL	2.2
1	C	159	GLY	2.1

6.2 Non-standard residues in protein, DNA, RNA chains [i](#)

There are no non-standard protein/DNA/RNA residues in this entry.

6.3 Carbohydrates [i](#)

There are no monosaccharides in this entry.

6.4 Ligands [i](#)

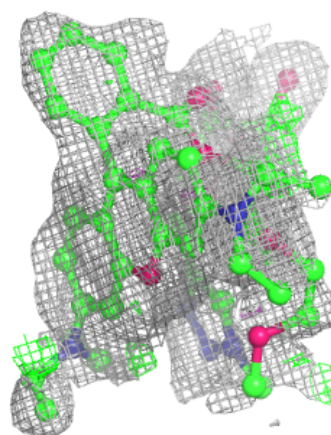
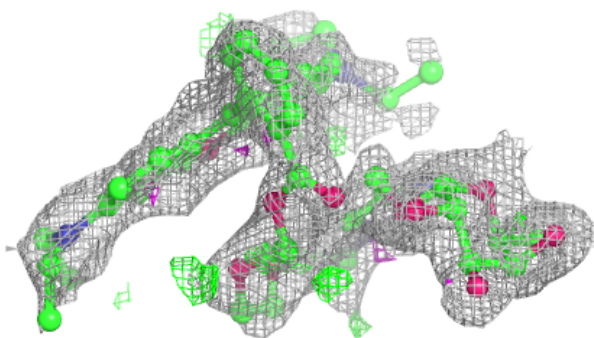
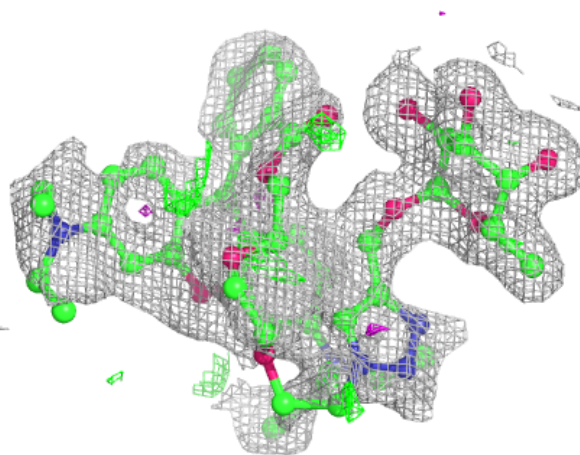
In the following table, the Atoms column lists the number of modelled atoms in the group and the number defined in the chemical component dictionary. The B-factors column lists the minimum, median, 95th percentile and maximum values of B factors of atoms in the group. The column labelled 'Q< 0.9' lists the number of atoms with occupancy less than 0.9.

Mol	Type	Chain	Res	Atoms	RSCC	RSR	B-factors(Å ²)	Q<0.9
3	GOL	C	305	6/6	0.79	0.11	28,30,31,32	0
3	GOL	B	304	6/6	0.80	0.17	21,23,23,28	0
2	R3F	B	301	58/58	0.83	0.16	20,46,55,59	0
2	R3F	C	301	58/58	0.84	0.16	21,45,56,57	0
2	R3F	A	302	58/58	0.85	0.30	16,114,139,141	0
2	R3F	C	302	58/58	0.85	0.18	20,59,62,66	0
3	GOL	C	306	6/6	0.86	0.12	32,32,34,35	0
2	R3F	B	302	58/58	0.88	0.18	19,60,71,74	0
2	R3F	A	301	58/58	0.88	0.24	15,110,128,129	0
3	GOL	B	306	6/6	0.90	0.09	18,20,20,21	0
3	GOL	C	304	6/6	0.91	0.09	17,18,19,21	0
3	GOL	A	306	6/6	0.92	0.09	18,18,20,21	0
3	GOL	C	303	6/6	0.93	0.08	18,21,21,25	0
3	GOL	A	305	6/6	0.93	0.09	21,22,23,23	0
3	GOL	B	303	6/6	0.94	0.09	18,19,20,20	0
3	GOL	B	305	6/6	0.95	0.08	18,19,19,19	0
3	GOL	A	303	6/6	0.96	0.09	14,14,15,15	0
3	GOL	A	304	6/6	0.96	0.07	12,12,13,14	0

The following is a graphical depiction of the model fit to experimental electron density of all instances of the Ligand of Interest. In addition, ligands with molecular weight > 250 and outliers as shown on the geometry validation Tables will also be included. Each fit is shown from different orientation to approximate a three-dimensional view.

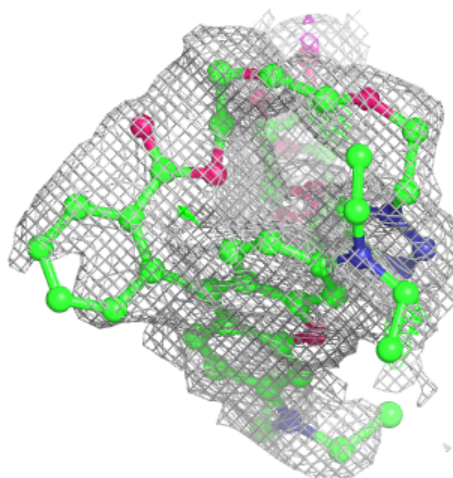
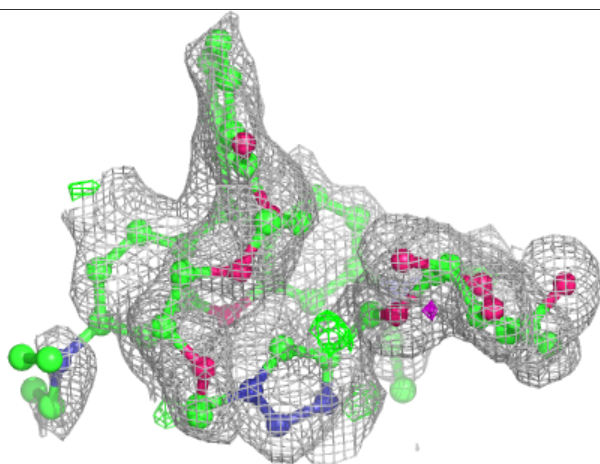
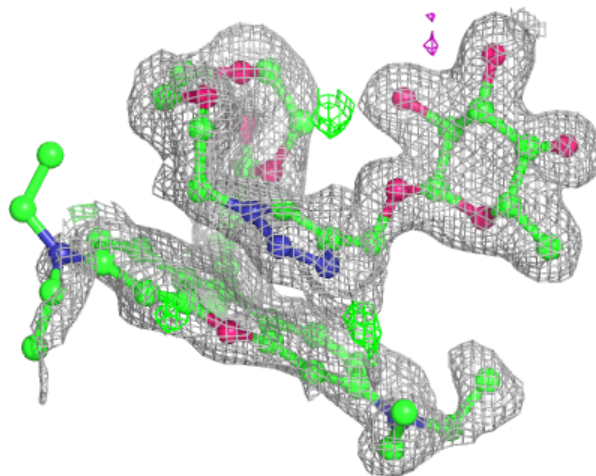
Electron density around R3F B 301:

$2mF_o-DF_c$ (at 0.7 rmsd) in gray
 mF_o-DF_c (at 3 rmsd) in purple (negative)
and green (positive)



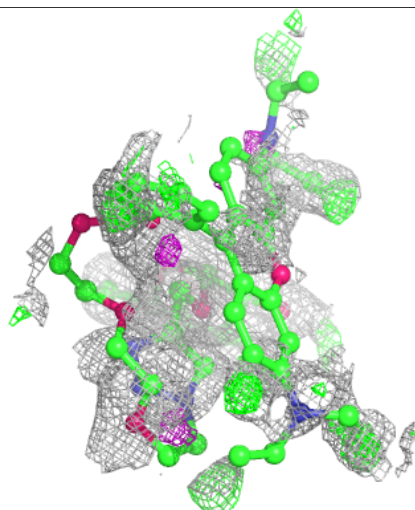
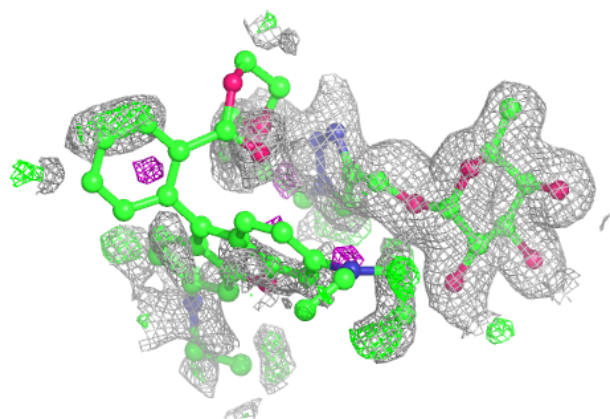
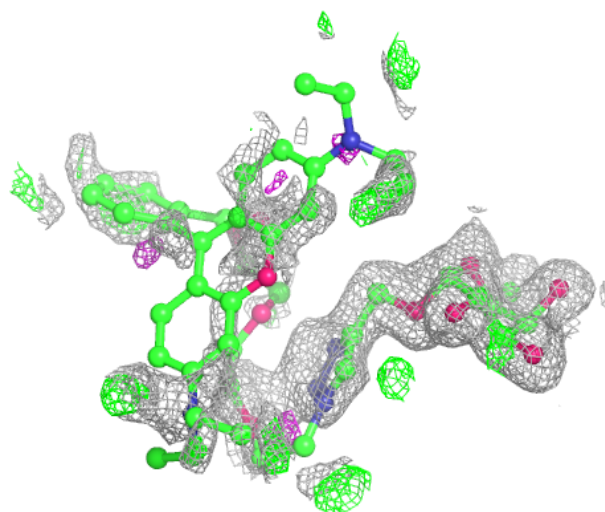
Electron density around R3F C 301:

$2mF_o-DF_c$ (at 0.7 rmsd) in gray
 mF_o-DF_c (at 3 rmsd) in purple (negative)
and green (positive)



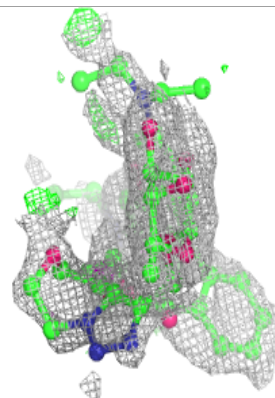
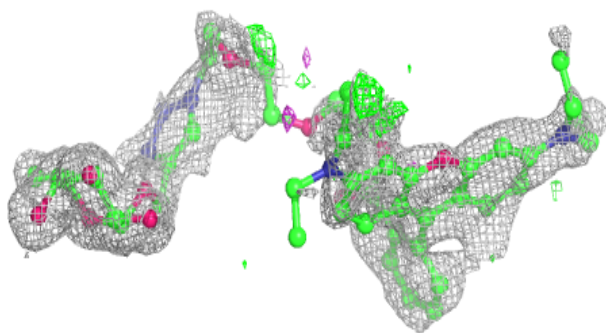
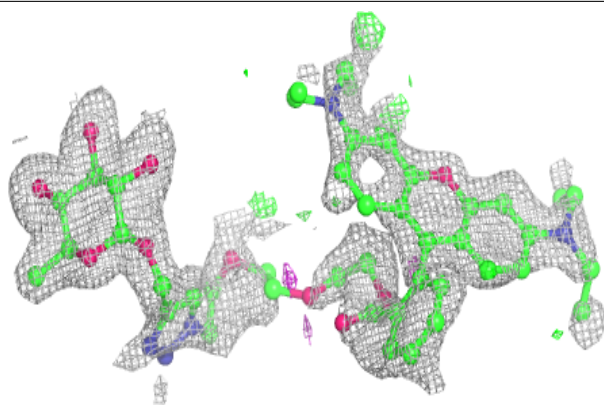
Electron density around R3F A 302:

$2mF_o-DF_c$ (at 0.7 rmsd) in gray
 mF_o-DF_c (at 3 rmsd) in purple (negative)
and green (positive)

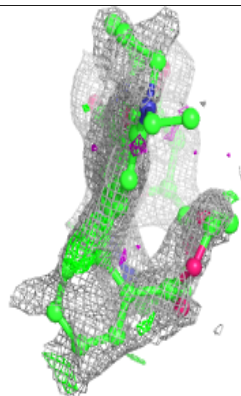
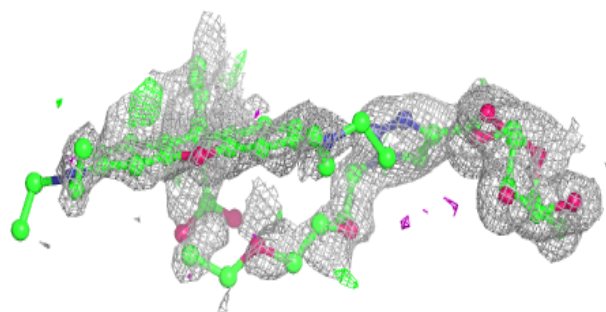
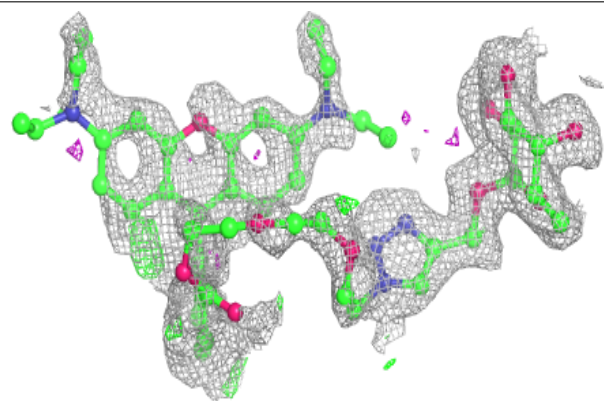


Electron density around R3F C 302:

$2mF_o-DF_c$ (at 0.7 rmsd) in gray
 mF_o-DF_c (at 3 rmsd) in purple (negative)
and green (positive)

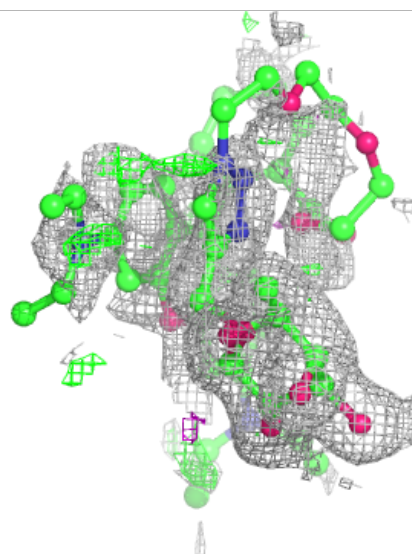
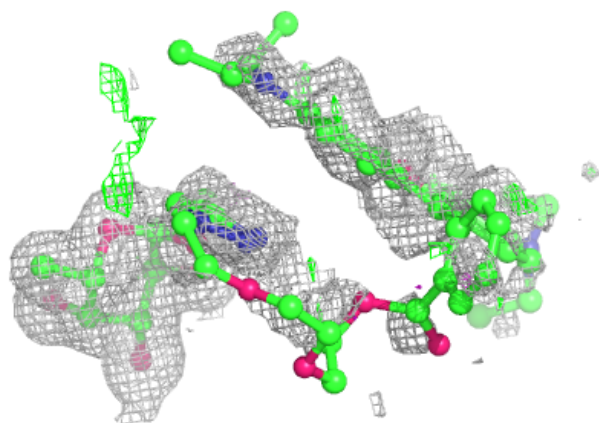
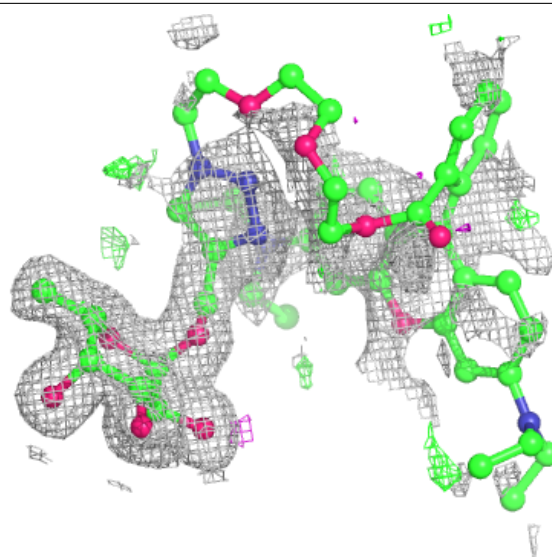
**Electron density around R3F B 302:**

$2mF_o-DF_c$ (at 0.7 rmsd) in gray
 mF_o-DF_c (at 3 rmsd) in purple (negative)
and green (positive)



Electron density around R3F A 301:

$2mF_o-DF_c$ (at 0.7 rmsd) in gray
 mF_o-DF_c (at 3 rmsd) in purple (negative)
and green (positive)



6.5 Other polymers [\(i\)](#)

There are no such residues in this entry.