



# Full wwPDB X-ray Structure Validation Report ⓘ

Jun 12, 2024 – 06:44 PM EDT

PDB ID : 3E7I  
Title : Structure of murine inos oxygenase domain with inhibitor AR-C94864  
Authors : Garcin, E.D.; Arvai, A.S.; Rosenfeld, R.J.; Kroeger, M.D.; Crane, B.R.; Andersson, G.; Andrews, G.; Hamley, P.J.; Mallinder, P.R.; Nicholls, D.J.; St-Gallay, S.A.; Tinker, A.C.; Gensmantel, N.P.; Mete, A.; Cheshire, D.R.; Connolly, S.; Stuehr, D.J.; Aberg, A.; Wallace, A.V.; Tainer, J.A.; Getzoff, E.D.  
Deposited on : 2008-08-18  
Resolution : 2.90 Å(reported)

This is a Full wwPDB X-ray Structure Validation Report for a publicly released PDB entry.

We welcome your comments at [validation@mail.wwpdb.org](mailto:validation@mail.wwpdb.org)

A user guide is available at

<https://www.wwpdb.org/validation/2017/XrayValidationReportHelp>

with specific help available everywhere you see the ⓘ symbol.

The types of validation reports are described at

<http://www.wwpdb.org/validation/2017/FAQs#types>.

---

The following versions of software and data (see [references](#) ①) were used in the production of this report:

MolProbity : 4.02b-467  
Mogul : 2022.3.0, CSD as543be (2022)  
Xtrriage (Phenix) : 1.20.1  
EDS : 2.36.2  
buster-report : 1.1.7 (2018)  
Percentile statistics : 20191225.v01 (using entries in the PDB archive December 25th 2019)  
Refmac : 5.8.0158  
CCP4 : 7.0.044 (Gargrove)  
Ideal geometry (proteins) : Engh & Huber (2001)  
Ideal geometry (DNA, RNA) : Parkinson et al. (1996)  
Validation Pipeline (wwPDB-VP) : 2.36.2

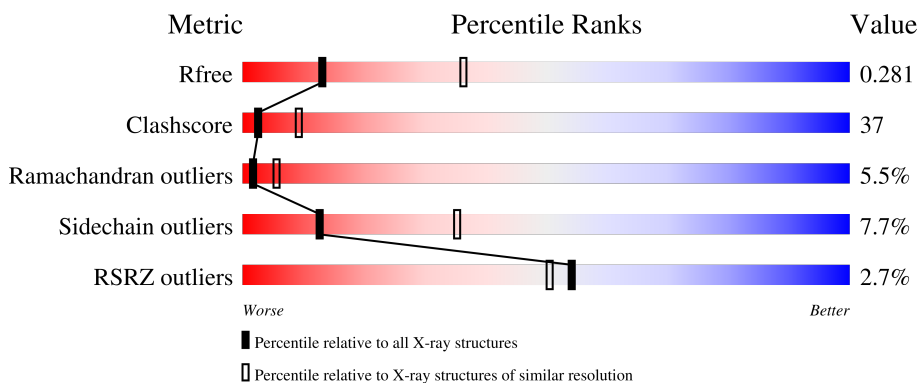
# 1 Overall quality at a glance i

The following experimental techniques were used to determine the structure:

*X-RAY DIFFRACTION*

The reported resolution of this entry is 2.90 Å.

Percentile scores (ranging between 0-100) for global validation metrics of the entry are shown in the following graphic. The table shows the number of entries on which the scores are based.



Metric	Whole archive (#Entries)	Similar resolution (#Entries, resolution range(Å))
$R_{free}$	130704	1957 (2.90-2.90)
Clashscore	141614	2172 (2.90-2.90)
Ramachandran outliers	138981	2115 (2.90-2.90)
Sidechain outliers	138945	2117 (2.90-2.90)
RSRZ outliers	127900	1906 (2.90-2.90)

The table below summarises the geometric issues observed across the polymeric chains and their fit to the electron density. The red, orange, yellow and green segments of the lower bar indicate the fraction of residues that contain outliers for  $\geq 3$ , 2, 1 and 0 types of geometric quality criteria respectively. A grey segment represents the fraction of residues that are not modelled. The numeric value for each fraction is indicated below the corresponding segment, with a dot representing fractions  $\leq 5\%$ . The upper red bar (where present) indicates the fraction of residues that have poor fit to the electron density. The numeric value is given above the bar.

Mol	Chain	Length	Quality of chain
1	A	433	<div style="display: flex; align-items: center;"> <div style="margin-right: 5px;">2%</div> <div style="flex-grow: 1;"> </div> </div>
1	B	433	<div style="display: flex; align-items: center;"> <div style="margin-right: 5px;">3%</div> <div style="flex-grow: 1;"> </div> </div>

The following table lists non-polymeric compounds, carbohydrate monomers and non-standard residues in protein, DNA, RNA chains that are outliers for geometric or electron-density-fit criteria:

Mol	Type	Chain	Res	Chirality	Geometry	Clashes	Electron density
6	B2	A	907	-	-	X	-

## 2 Entry composition [i](#)

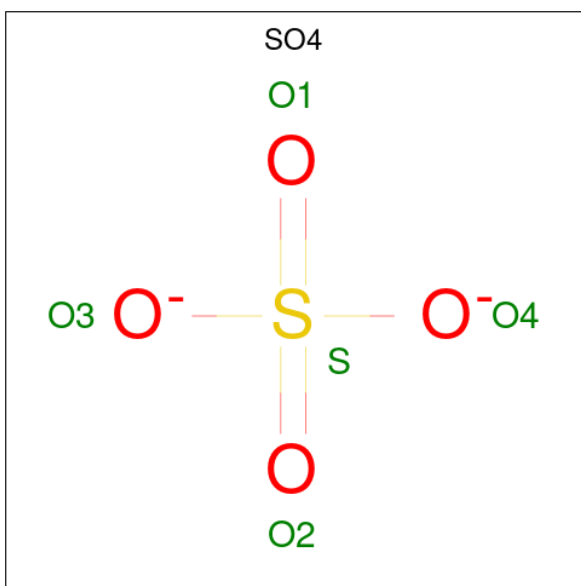
There are 7 unique types of molecules in this entry. The entry contains 7217 atoms, of which 0 are hydrogens and 0 are deuteriums.

In the tables below, the ZeroOcc column contains the number of atoms modelled with zero occupancy, the AltConf column contains the number of residues with at least one atom in alternate conformation and the Trace column contains the number of residues modelled with at most 2 atoms.

- Molecule 1 is a protein called Nitric oxide synthase, inducible.

Mol	Chain	Residues	Atoms					ZeroOcc	AltConf	Trace
			Total	C	N	O	S			
1	A	420	Total 3424	C 2194	N 590	O 619	S 21	0	0	0
1	B	420	Total 3424	C 2194	N 590	O 619	S 21	0	0	0

- Molecule 2 is SULFATE ION (three-letter code: SO4) (formula: O<sub>4</sub>S).



Mol	Chain	Residues	Atoms			ZeroOcc	AltConf
			Total	O	S		
2	A	1	Total 5	O 4	S 1	0	0

- Molecule 3 is ZINC ION (three-letter code: ZN) (formula: Zn).

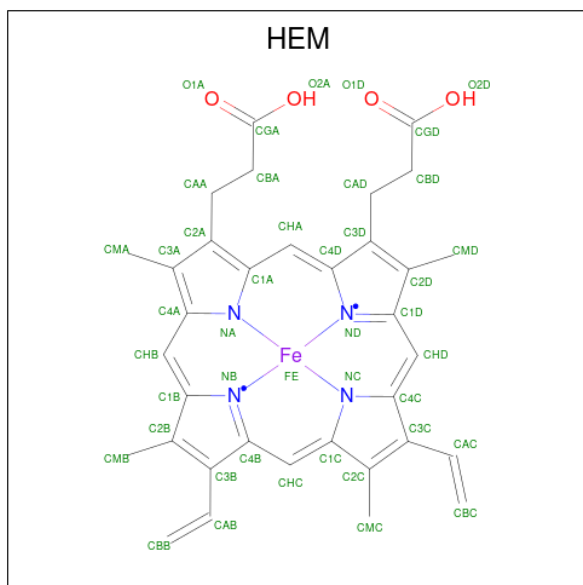
Mol	Chain	Residues	Atoms		ZeroOcc	AltConf
			Total	Zn		
3	A	1	Total 1	Zn 1	0	0

*Continued on next page...*

Continued from previous page...

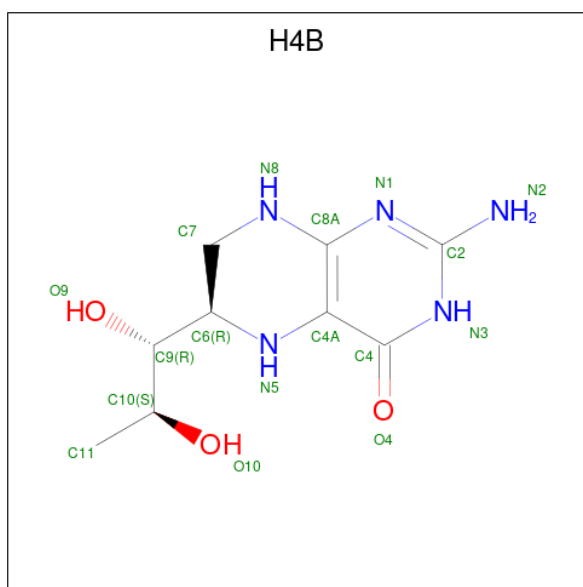
Mol	Chain	Residues	Atoms	ZeroOcc	AltConf
3	B	1	Total Zn 1 1	0	0

- Molecule 4 is PROTOPORPHYRIN IX CONTAINING FE (three-letter code: HEM) (formula:  $C_{34}H_{32}FeN_4O_4$ ).



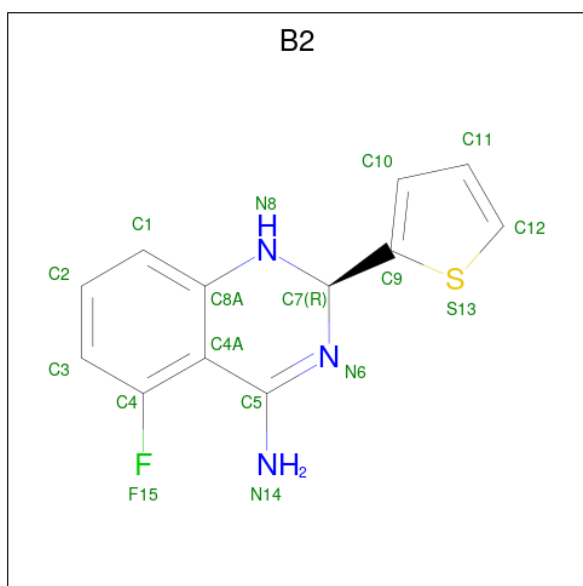
Mol	Chain	Residues	Atoms	ZeroOcc	AltConf
4	A	1	Total C Fe N O 43 34 1 4 4	0	0
4	B	1	Total C Fe N O 43 34 1 4 4	0	0

- Molecule 5 is 5,6,7,8-TETRAHYDROBIOPTERIN (three-letter code: H4B) (formula:  $C_9H_{15}N_5O_3$ ).



Mol	Chain	Residues	Atoms				ZeroOcc	AltConf
			Total	C	N	O		
5	A	1	17	9	5	3	0	0
5	B	1	17	9	5	3	0	0

- Molecule 6 is (2R)-5-FLUORO-2-(2-THIENYL)-1,2-DIHYDROQUINAZOLIN-4-AMINE (three-letter code: B2) (formula: C<sub>12</sub>H<sub>10</sub>FN<sub>3</sub>S).



Mol	Chain	Residues	Atoms					ZeroOcc	AltConf
			Total	C	F	N	S		
6	A	1	17	12	1	3	1	0	0

*Continued on next page...*

*Continued from previous page...*

Mol	Chain	Residues	Atoms					ZeroOcc	AltConf
6	A	1	Total	C	F	N	S	0	0
			17	12	1	3	1		
6	B	1	Total	C	F	N	S	0	0
			17	12	1	3	1		

- Molecule 7 is water.

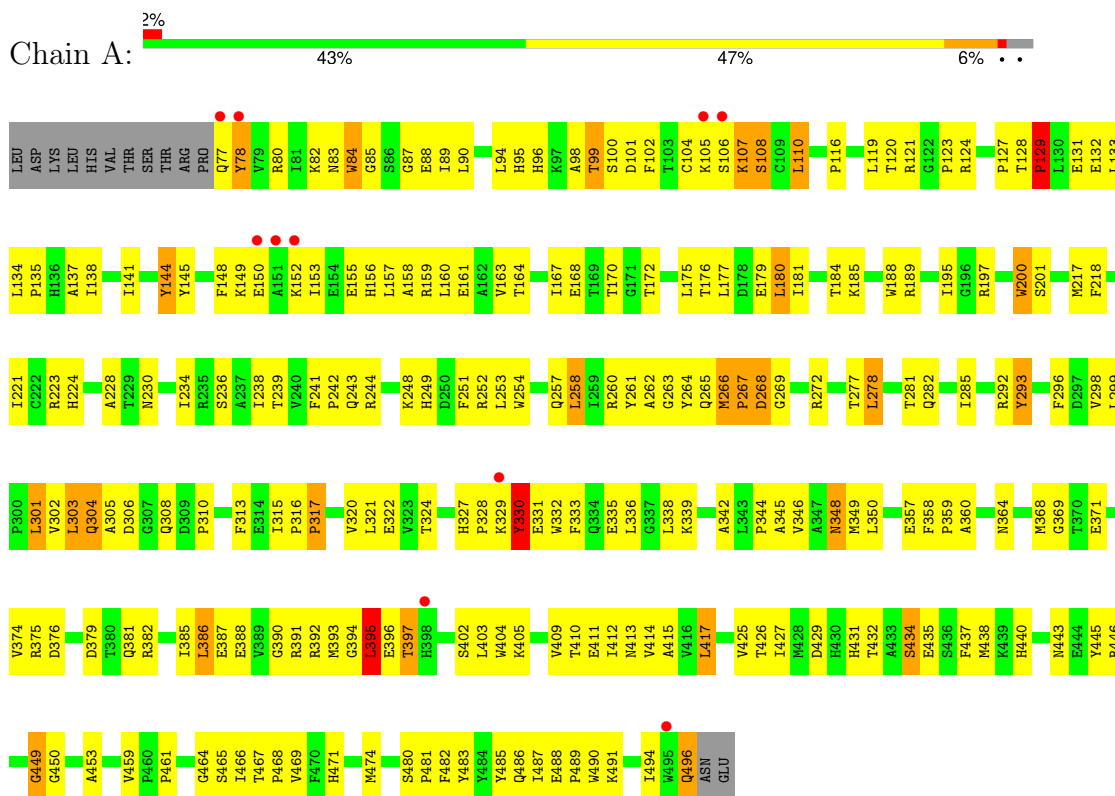
Mol	Chain	Residues	Atoms		ZeroOcc	AltConf
7	A	79	Total	O	0	0
			79	79		
7	B	112	Total	O	0	0
			112	112		



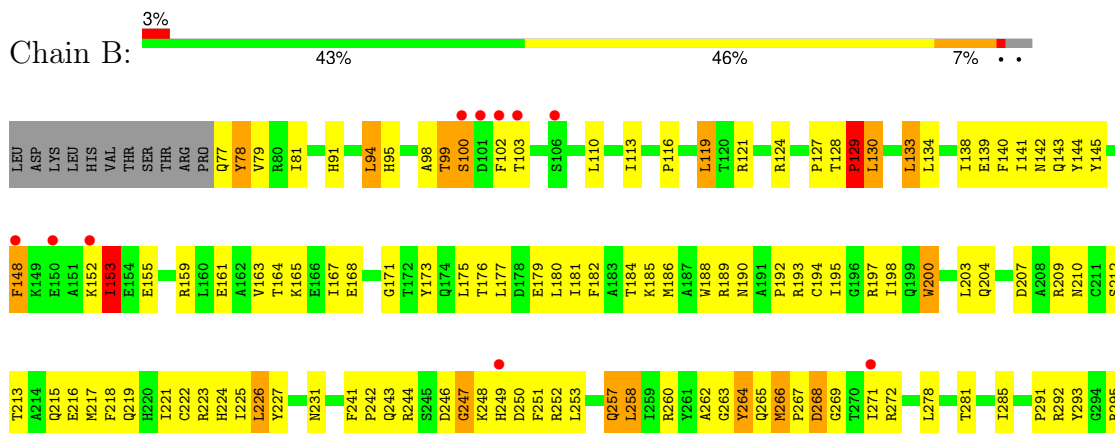
### 3 Residue-property plots i

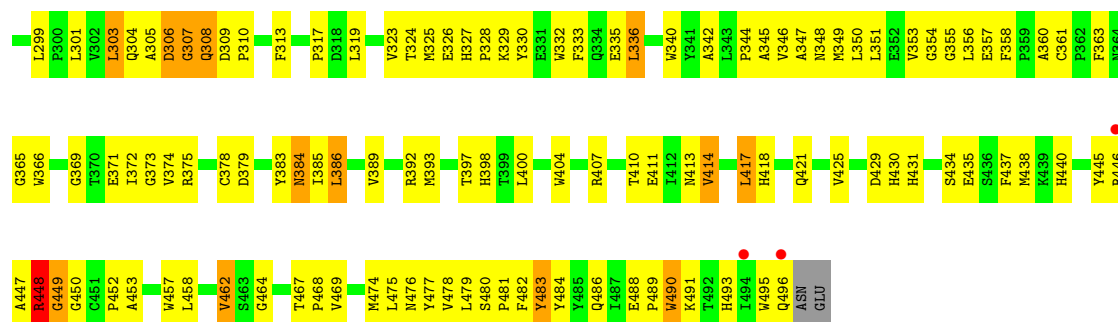
These plots are drawn for all protein, RNA, DNA and oligosaccharide chains in the entry. The first graphic for a chain summarises the proportions of the various outlier classes displayed in the second graphic. The second graphic shows the sequence view annotated by issues in geometry and electron density. Residues are color-coded according to the number of geometric quality criteria for which they contain at least one outlier: green = 0, yellow = 1, orange = 2 and red = 3 or more. A red dot above a residue indicates a poor fit to the electron density ( $RSRZ > 2$ ). Stretches of 2 or more consecutive residues without any outlier are shown as a green connector. Residues present in the sample, but not in the model, are shown in grey.

#### • Molecule 1: Nitric oxide synthase, inducible



#### • Molecule 1: Nitric oxide synthase, inducible





## 4 Data and refinement statistics

Property	Value	Source
Space group	P 61 2 2	Depositor
Cell constants a, b, c, $\alpha$ , $\beta$ , $\gamma$	213.97Å 213.97Å 113.13Å 90.00° 90.00° 120.00°	Depositor
Resolution (Å)	19.99 – 2.90 19.99 – 2.90	Depositor EDS
% Data completeness (in resolution range)	82.9 (19.99-2.90) 82.9 (19.99-2.90)	Depositor EDS
$R_{merge}$	0.06	Depositor
$R_{sym}$	(Not available)	Depositor
$\langle I/\sigma(I) \rangle$ <sup>1</sup>	4.26 (at 2.88Å)	Xtrriage
Refinement program	CNS 1.1	Depositor
R, $R_{free}$	0.239 , 0.295 0.224 , 0.281	Depositor DCC
$R_{free}$ test set	1589 reflections (4.95%)	wwPDB-VP
Wilson B-factor (Å <sup>2</sup> )	65.5	Xtrriage
Anisotropy	0.844	Xtrriage
Bulk solvent $k_{sol}$ (e/Å <sup>3</sup> ), $B_{sol}$ (Å <sup>2</sup> )	0.33 , 87.1	EDS
L-test for twinning <sup>2</sup>	$\langle  L  \rangle = 0.50$ , $\langle L^2 \rangle = 0.33$	Xtrriage
Estimated twinning fraction	No twinning to report.	Xtrriage
$F_o, F_c$ correlation	0.94	EDS
Total number of atoms	7217	wwPDB-VP
Average B, all atoms (Å <sup>2</sup> )	74.0	wwPDB-VP

Xtrriage's analysis on translational NCS is as follows: *The largest off-origin peak in the Patterson function is 1.90% of the height of the origin peak. No significant pseudotranslation is detected.*

<sup>1</sup>Intensities estimated from amplitudes.

<sup>2</sup>Theoretical values of  $\langle |L| \rangle$ ,  $\langle L^2 \rangle$  for acentric reflections are 0.5, 0.333 respectively for untwinned datasets, and 0.375, 0.2 for perfectly twinned datasets.

## 5 Model quality [i](#)

### 5.1 Standard geometry [i](#)

Bond lengths and bond angles in the following residue types are not validated in this section: ZN, SO4, HEM, B2, H4B

The Z score for a bond length (or angle) is the number of standard deviations the observed value is removed from the expected value. A bond length (or angle) with  $|Z| > 5$  is considered an outlier worth inspection. RMSZ is the root-mean-square of all Z scores of the bond lengths (or angles).

Mol	Chain	Bond lengths		Bond angles	
		RMSZ	# Z  >5	RMSZ	# Z  >5
1	A	0.41	0/3524	0.66	0/4790
1	B	0.41	0/3524	0.66	1/4790 (0.0%)
All	All	0.41	0/7048	0.66	1/9580 (0.0%)

Chiral center outliers are detected by calculating the chiral volume of a chiral center and verifying if the center is modelled as a planar moiety or with the opposite hand. A planarity outlier is detected by checking planarity of atoms in a peptide group, atoms in a mainchain group or atoms of a sidechain that are expected to be planar.

Mol	Chain	#Chirality outliers	#Planarity outliers
1	B	0	1

There are no bond length outliers.

All (1) bond angle outliers are listed below:

Mol	Chain	Res	Type	Atoms	Z	Observed( $^{\circ}$ )	Ideal( $^{\circ}$ )
1	B	365	GLY	N-CA-C	-5.37	99.67	113.10

There are no chirality outliers.

All (1) planarity outliers are listed below:

Mol	Chain	Res	Type	Group
1	B	483	TYR	Sidechain

### 5.2 Too-close contacts [i](#)

In the following table, the Non-H and H(model) columns list the number of non-hydrogen atoms and hydrogen atoms in the chain respectively. The H(added) column lists the number of hydrogen atoms added and optimized by MolProbity. The Clashes column lists the number of clashes within

the asymmetric unit, whereas Symm-Clashes lists symmetry-related clashes.

Mol	Chain	Non-H	H(model)	H(added)	Clashes	Symm-Clashes
1	A	3424	0	3321	251	0
1	B	3424	0	3322	252	0
2	A	5	0	0	0	0
3	A	1	0	0	0	0
3	B	1	0	0	0	0
4	A	43	0	30	4	0
4	B	43	0	30	2	0
5	A	17	0	15	1	0
5	B	17	0	15	0	0
6	A	34	0	20	8	0
6	B	17	0	10	0	0
7	A	79	0	0	11	0
7	B	112	0	0	18	0
All	All	7217	0	6763	508	0

The all-atom clashscore is defined as the number of clashes found per 1000 atoms (including hydrogen atoms). The all-atom clashscore for this structure is 37.

All (508) close contacts within the same asymmetric unit are listed below, sorted by their clash magnitude.

Atom-1	Atom-2	Interatomic distance (Å)	Clash overlap (Å)
1:A:350:LEU:HB2	1:A:486:GLN:NE2	1.66	1.08
1:A:266:MET:SD	1:A:272:ARG:HD3	2.00	1.00
1:A:464:GLY:O	1:A:467:THR:HG22	1.69	0.92
1:B:99:THR:HG22	1:B:100:SER:H	1.31	0.91
1:A:149:LYS:HG2	1:A:150:GLU:HG3	1.54	0.90
1:B:221:ILE:HG21	1:B:301:LEU:HD21	1.54	0.90
1:A:350:LEU:HB2	1:A:486:GLN:HE21	1.35	0.89
1:A:105:LYS:HD2	1:A:106:SER:H	1.39	0.88
1:B:163:VAL:HG12	1:B:167:ILE:HD11	1.56	0.87
1:A:330:TYR:HB3	1:A:332:TRP:NE1	1.90	0.87
1:B:173:TYR:CE1	1:B:356:LEU:HD11	2.10	0.86
1:B:130:LEU:HD22	1:B:130:LEU:H	1.38	0.86
1:B:303:LEU:HD12	1:B:303:LEU:H	1.40	0.85
1:A:141:ILE:HD13	1:A:163:VAL:HG21	1.58	0.85
4:A:901:HEM:HBC2	4:A:901:HEM:HMC2	1.58	0.84
1:B:81:ILE:HD11	1:B:475:LEU:HD13	1.59	0.83
1:A:241:PHE:HB3	1:A:242:PRO:CD	2.09	0.82
1:A:128:THR:HB	1:A:133:LEU:HD12	1.62	0.81
1:A:77:GLN:HE21	1:A:78:TYR:HD2	1.28	0.81

*Continued on next page...*

*Continued from previous page...*

Atom-1	Atom-2	Interatomic distance (Å)	Clash overlap (Å)
1:A:153:ILE:O	1:A:157:LEU:HD13	1.81	0.80
1:A:368:MET:O	1:A:371:GLU:HG3	1.82	0.80
1:A:217:MET:HE2	1:A:305:ALA:HB2	1.62	0.80
1:A:266:MET:HB3	1:A:267:PRO:HD2	1.62	0.80
1:B:141:ILE:HD13	1:B:163:VAL:HG21	1.62	0.80
1:B:141:ILE:HD11	1:B:163:VAL:HG11	1.65	0.79
1:B:303:LEU:HD12	1:B:303:LEU:N	1.97	0.79
1:A:141:ILE:HD11	1:A:163:VAL:HG11	1.65	0.79
1:A:395:LEU:HD13	1:A:395:LEU:H	1.47	0.78
1:B:161:GLU:HG2	1:B:165:LYS:HE2	1.64	0.78
1:B:124:ARG:HG3	1:B:124:ARG:HH11	1.48	0.78
1:A:494:ILE:HD12	1:A:494:ILE:H	1.49	0.77
1:A:98:ALA:HB1	1:A:107:LYS:CG	2.14	0.76
1:A:327:HIS:ND1	1:A:328:PRO:HD2	2.02	0.74
1:B:272:ARG:NH1	1:B:295:ARG:HG3	2.02	0.74
1:A:133:LEU:HD11	1:A:172:THR:HG22	1.70	0.73
1:A:159:ARG:O	1:A:163:VAL:HG23	1.88	0.73
1:B:246:ASP:CG	1:B:247:GLY:H	1.86	0.73
1:B:464:GLY:O	1:B:467:THR:HB	1.88	0.73
1:B:173:TYR:CZ	1:B:356:LEU:HD11	2.23	0.73
1:A:386:LEU:H	6:A:907:B2:H10	1.52	0.73
1:A:241:PHE:HB3	1:A:242:PRO:HD2	1.70	0.73
1:A:480:SER:HA	1:A:481:PRO:C	2.10	0.72
1:B:241:PHE:HB3	1:B:242:PRO:CD	2.19	0.71
1:B:438:MET:HE2	1:B:469:VAL:HG12	1.73	0.71
1:B:163:VAL:O	1:B:167:ILE:HG13	1.91	0.71
1:A:176:THR:OG1	1:A:179:GLU:HG3	1.91	0.70
1:A:494:ILE:HD12	1:A:494:ILE:N	2.07	0.70
1:A:195:ILE:HG21	1:A:368:MET:HE3	1.74	0.70
1:A:251:PHE:O	1:A:360:ALA:HB2	1.91	0.70
1:B:243:GLN:HB3	1:B:358:PHE:CE2	2.27	0.70
1:A:223:ARG:HG3	1:A:223:ARG:HH11	1.56	0.70
1:A:262:ALA:HB2	1:A:299:LEU:CD2	2.22	0.69
1:A:330:TYR:HB3	1:A:332:TRP:CE2	2.26	0.69
1:B:164:THR:O	1:B:168:GLU:HG3	1.92	0.69
1:A:395:LEU:H	1:A:395:LEU:CD1	2.04	0.69
1:A:244:ARG:HA	7:A:1068:HOH:O	1.92	0.69
1:B:304:GLN:O	1:B:304:GLN:HG3	1.92	0.69
1:A:80:ARG:NH2	7:A:1054:HOH:O	2.25	0.69
1:A:304:GLN:O	1:A:304:GLN:HG3	1.92	0.68
1:B:99:THR:HG22	1:B:100:SER:N	2.07	0.68

*Continued on next page...*

*Continued from previous page...*

Atom-1	Atom-2	Interatomic distance (Å)	Clash overlap (Å)
1:A:102:PHE:HB2	1:A:107:LYS:HA	1.76	0.68
1:A:141:ILE:CD1	1:A:163:VAL:HG21	2.24	0.68
1:B:413:ASN:HA	7:B:2111:HOH:O	1.93	0.67
1:A:85:GLY:HA2	1:A:381:GLN:NE2	2.09	0.67
1:A:132:GLU:O	1:A:135:PRO:HD2	1.94	0.67
1:B:173:TYR:O	1:B:356:LEU:HD21	1.93	0.67
1:B:153:ILE:HG13	7:B:2098:HOH:O	1.94	0.67
1:B:258:LEU:HB2	1:B:345:ALA:HB3	1.78	0.66
1:A:488:GLU:OE1	1:A:491:LYS:HE2	1.95	0.66
1:B:159:ARG:O	1:B:163:VAL:HG23	1.96	0.66
1:B:438:MET:CE	1:B:469:VAL:HG12	2.26	0.66
1:A:386:LEU:HD21	1:A:409:VAL:CG2	2.26	0.66
1:B:124:ARG:HD2	1:B:244:ARG:HD3	1.77	0.65
1:B:130:LEU:H	1:B:130:LEU:CD2	2.08	0.65
1:A:330:TYR:HD1	1:A:330:TYR:H	1.44	0.65
1:B:144:TYR:HE2	1:B:179:GLU:HA	1.60	0.65
1:A:105:LYS:HD2	1:A:106:SER:N	2.11	0.65
1:A:107:LYS:O	1:A:108:SER:HB2	1.95	0.65
1:B:194:CYS:SG	1:B:197:ARG:HG2	2.36	0.65
1:A:132:GLU:C	1:A:135:PRO:HD2	2.17	0.64
1:A:221:ILE:HG21	1:A:301:LEU:HD21	1.80	0.64
1:A:386:LEU:HD21	1:A:409:VAL:HG23	1.79	0.64
1:B:374:VAL:O	1:B:378:CYS:HB2	1.98	0.64
1:A:496:GLN:H	1:A:496:GLN:NE2	1.96	0.64
1:B:430:HIS:N	7:B:2072:HOH:O	2.27	0.64
1:B:249:HIS:C	1:B:306:ASP:O	2.36	0.64
1:B:397:THR:HG22	1:B:397:THR:O	1.96	0.64
1:B:221:ILE:HD12	1:B:303:LEU:HD21	1.80	0.63
1:B:134:LEU:O	1:B:138:ILE:HG13	1.97	0.63
1:B:215:GLN:O	1:B:219:GLN:HG3	1.97	0.63
1:B:182:PHE:O	1:B:186:MET:HB2	1.98	0.63
1:A:124:ARG:NH1	1:A:128:THR:OG1	2.31	0.63
1:B:333:PHE:O	1:B:336:LEU:HB2	1.99	0.63
1:B:360:ALA:HA	7:B:2034:HOH:O	1.97	0.63
1:A:333:PHE:HE2	1:A:415:ALA:HB1	1.64	0.63
1:B:271:ILE:HD13	1:B:278:LEU:HD11	1.80	0.63
1:A:260:ARG:HD2	7:A:1025:HOH:O	1.98	0.62
1:A:387:GLU:H	6:A:907:B2:HN8	1.46	0.62
1:B:141:ILE:CD1	1:B:163:VAL:HG11	2.28	0.62
1:A:350:LEU:HD21	1:A:357:GLU:HB2	1.82	0.62
1:B:138:ILE:O	1:B:142:ASN:ND2	2.31	0.62

*Continued on next page...*

*Continued from previous page...*

Atom-1	Atom-2	Interatomic distance (Å)	Clash overlap (Å)
1:B:438:MET:HE3	1:B:469:VAL:HA	1.81	0.62
1:A:393:MET:HE3	1:A:411:GLU:HG3	1.82	0.61
1:B:480:SER:HA	1:B:481:PRO:C	2.19	0.61
1:B:477:TYR:HD2	1:B:479:LEU:HD21	1.65	0.61
1:A:261:TYR:O	1:A:277:THR:HG21	1.98	0.61
1:B:99:THR:OG1	1:B:478:VAL:HG12	2.00	0.61
1:B:244:ARG:HH21	1:B:250:ASP:CG	2.03	0.61
1:B:325:MET:HE2	1:B:325:MET:HA	1.82	0.61
1:B:393:MET:HE3	1:B:411:GLU:HG3	1.83	0.61
1:A:155:GLU:HA	1:A:158:ALA:HB3	1.81	0.61
1:A:342:ALA:HB1	1:A:425:VAL:HG11	1.83	0.61
1:B:144:TYR:CE2	1:B:179:GLU:HG2	2.36	0.61
1:B:373:GLY:HA3	7:B:2111:HOH:O	1.99	0.61
1:A:333:PHE:HA	1:A:336:LEU:CD1	2.32	0.60
1:A:258:LEU:HB2	1:A:345:ALA:HB3	1.84	0.60
1:A:466:ILE:HG22	1:A:466:ILE:O	2.02	0.59
1:A:224:HIS:ND1	1:A:239:THR:HG22	2.17	0.59
1:A:459:VAL:HG22	1:A:469:VAL:HG23	1.82	0.59
1:B:81:ILE:HD11	1:B:475:LEU:CD1	2.32	0.59
1:A:134:LEU:O	1:A:138:ILE:HG12	2.03	0.59
1:A:100:SER:O	1:A:107:LYS:HB2	2.03	0.59
1:A:138:ILE:HG23	1:A:160:LEU:CD2	2.32	0.59
1:A:177:LEU:O	1:A:181:ILE:HG13	2.02	0.59
1:B:241:PHE:HB3	1:B:242:PRO:HD2	1.84	0.59
1:B:285:ILE:CD1	1:B:291:PRO:HB3	2.33	0.59
1:A:133:LEU:O	1:A:133:LEU:HD23	2.03	0.59
1:B:176:THR:OG1	1:B:179:GLU:HG3	2.03	0.59
1:A:267:PRO:O	1:A:269:GLY:N	2.35	0.58
1:B:102:PHE:HZ	1:B:476:ASN:ND2	2.01	0.58
1:B:263:GLY:O	1:B:278:LEU:HD23	2.02	0.58
1:A:327:HIS:ND1	1:A:328:PRO:CD	2.67	0.58
1:A:381:GLN:O	1:A:382:ARG:HD2	2.02	0.58
1:A:332:TRP:O	1:A:335:GLU:HB2	2.04	0.58
1:B:246:ASP:CG	1:B:247:GLY:N	2.56	0.58
1:A:217:MET:HG2	1:A:241:PHE:CE2	2.38	0.58
1:A:445:TYR:HA	1:A:450:GLY:H	1.69	0.57
1:A:144:TYR:HD1	1:A:145:TYR:N	2.02	0.57
4:A:901:HEM:HBC2	4:A:901:HEM:CMC	2.31	0.57
1:A:333:PHE:CE2	1:A:415:ALA:HB1	2.38	0.57
1:B:124:ARG:HG3	1:B:124:ARG:NH1	2.19	0.57
1:B:303:LEU:HG	7:B:2103:HOH:O	2.04	0.57

*Continued on next page...*



*Continued from previous page...*

Atom-1	Atom-2	Interatomic distance (Å)	Clash overlap (Å)
1:B:410:THR:O	1:B:414:VAL:HG12	2.03	0.57
1:B:244:ARG:HD2	1:B:357:GLU:HG3	1.85	0.57
1:A:134:LEU:HB3	1:A:135:PRO:HD3	1.87	0.57
1:A:228:ALA:HB1	1:A:364:ASN:HD21	1.69	0.57
1:B:190:ASN:OD1	1:B:448:ARG:NH2	2.37	0.57
1:A:303:LEU:N	1:A:303:LEU:CD1	2.66	0.57
1:B:445:TYR:HA	1:B:450:GLY:H	1.68	0.57
1:A:258:LEU:HD22	1:A:345:ALA:HB1	1.85	0.57
1:A:244:ARG:HD2	1:A:357:GLU:OE2	2.03	0.57
1:A:386:LEU:N	6:A:907:B2:H10	2.20	0.56
1:B:327:HIS:ND1	1:B:328:PRO:HD2	2.20	0.56
1:A:249:HIS:HA	1:A:306:ASP:O	2.05	0.56
1:B:247:GLY:C	1:B:249:HIS:H	2.09	0.56
1:A:83:ASN:O	1:A:85:GLY:N	2.38	0.56
1:A:120:THR:CG2	1:A:486:GLN:HA	2.36	0.56
1:B:262:ALA:HB2	1:B:299:LEU:CD2	2.36	0.56
1:B:374:VAL:HG21	1:B:462:VAL:HG21	1.87	0.56
1:A:387:GLU:HB3	6:A:907:B2:C8A	2.36	0.56
1:A:195:ILE:O	1:A:195:ILE:HG12	2.04	0.56
1:A:342:ALA:CB	1:A:425:VAL:HG11	2.35	0.56
1:B:138:ILE:HG22	1:B:142:ASN:ND2	2.20	0.56
1:A:89:ILE:HG22	1:A:90:LEU:N	2.20	0.56
1:B:99:THR:CG2	1:B:100:SER:H	2.05	0.56
1:B:198:ILE:HB	1:B:440:HIS:HB2	1.88	0.56
1:A:257:GLN:HG3	1:A:260:ARG:HB2	1.86	0.56
1:A:131:GLU:O	1:A:135:PRO:HG2	2.06	0.56
1:A:301:LEU:HB3	1:A:303:LEU:HD11	1.86	0.56
1:A:223:ARG:HG3	1:A:223:ARG:NH1	2.21	0.55
1:B:266:MET:SD	1:B:272:ARG:HD2	2.46	0.55
1:B:281:THR:O	1:B:285:ILE:HG12	2.05	0.55
1:B:266:MET:HB3	1:B:267:PRO:HD2	1.88	0.55
1:B:77:GLN:HE21	1:B:77:GLN:HA	1.71	0.55
1:A:144:TYR:CD1	1:A:144:TYR:C	2.79	0.55
1:B:267:PRO:O	1:B:269:GLY:N	2.40	0.55
1:B:378:CYS:SG	1:B:386:LEU:HD23	2.47	0.55
1:A:263:GLY:O	1:A:278:LEU:HD23	2.07	0.55
1:B:243:GLN:NE2	1:B:356:LEU:HD23	2.21	0.55
1:A:301:LEU:HB3	1:A:303:LEU:CD1	2.36	0.55
1:B:493:HIS:CD2	1:B:495:TRP:CD1	2.95	0.55
1:A:248:LYS:HE3	1:A:494:ILE:HD13	1.88	0.55
1:B:305:ALA:O	1:B:307:GLY:N	2.39	0.55

*Continued on next page...*

*Continued from previous page...*

Atom-1	Atom-2	Interatomic distance (Å)	Clash overlap (Å)
1:B:448:ARG:CB	1:B:448:ARG:HH11	2.19	0.55
1:B:434:SER:HB3	1:B:468:PRO:HD2	1.88	0.54
1:B:477:TYR:CD2	1:B:479:LEU:HD21	2.41	0.54
1:B:252:ARG:HH12	1:B:486:GLN:HB3	1.72	0.54
1:A:257:GLN:NE2	1:A:260:ARG:HD3	2.23	0.54
1:A:321:LEU:HD12	1:A:322:GLU:N	2.23	0.54
1:B:429:ASP:HA	7:B:2072:HOH:O	2.08	0.54
1:B:257:GLN:HB3	1:B:345:ALA:O	2.07	0.54
1:A:429:ASP:OD1	1:A:432:THR:HG23	2.08	0.54
1:A:333:PHE:CE2	1:A:415:ALA:CB	2.90	0.54
1:B:478:VAL:O	1:B:479:LEU:HD23	2.07	0.54
1:A:262:ALA:HB2	1:A:299:LEU:HD23	1.89	0.54
1:B:356:LEU:N	1:B:356:LEU:HD12	2.23	0.54
1:B:144:TYR:CE2	1:B:179:GLU:HA	2.42	0.53
1:A:138:ILE:HG23	1:A:160:LEU:HD22	1.91	0.53
1:A:281:THR:O	1:A:285:ILE:HG12	2.08	0.53
1:B:186:MET:O	1:B:189:ARG:HB3	2.09	0.53
1:A:98:ALA:HB1	1:A:107:LYS:HG2	1.90	0.53
1:B:313:PHE:HA	7:B:2105:HOH:O	2.06	0.53
1:B:330:TYR:HD2	1:B:332:TRP:CZ2	2.27	0.53
1:A:164:THR:O	1:A:168:GLU:HG2	2.09	0.53
1:B:260:ARG:HD2	7:B:2037:HOH:O	2.07	0.53
1:B:350:LEU:HB2	1:B:486:GLN:OE1	2.08	0.53
1:B:181:ILE:HG23	1:B:185:LYS:HD2	1.91	0.53
1:B:242:PRO:HG2	1:B:251:PHE:CZ	2.44	0.53
1:B:330:TYR:HB3	1:B:332:TRP:NE1	2.24	0.53
1:A:315:ILE:O	1:A:317:PRO:HD3	2.09	0.53
1:B:78:TYR:CD1	1:B:78:TYR:C	2.83	0.53
1:A:238:ILE:HG12	7:A:1074:HOH:O	2.09	0.52
1:B:167:ILE:O	1:B:171:GLY:HA2	2.09	0.52
1:A:258:LEU:HD22	1:A:345:ALA:CB	2.39	0.52
1:A:440:HIS:HA	1:A:443:ASN:HD22	1.74	0.52
1:B:247:GLY:O	1:B:249:HIS:N	2.43	0.52
1:A:218:PHE:CE1	1:A:313:PHE:HB3	2.43	0.52
1:B:192:PRO:HA	1:B:452:PRO:O	2.09	0.52
1:B:253:LEU:HA	7:B:2103:HOH:O	2.09	0.52
1:B:384:ASN:HA	7:B:2064:HOH:O	2.09	0.52
1:A:195:ILE:HG21	1:A:368:MET:CE	2.39	0.52
1:A:264:TYR:CE1	1:A:293:TYR:HA	2.44	0.52
1:B:180:LEU:O	1:B:184:THR:HG23	2.09	0.52
1:B:272:ARG:HH12	1:B:295:ARG:HG3	1.72	0.52

*Continued on next page...*

*Continued from previous page...*

Atom-1	Atom-2	Interatomic distance (Å)	Clash overlap (Å)
1:B:285:ILE:HD11	1:B:291:PRO:HB3	1.91	0.52
1:A:445:TYR:O	1:A:449:GLY:HA2	2.09	0.52
1:A:148:PHE:HD1	1:A:149:LYS:O	1.93	0.52
1:A:494:ILE:H	1:A:494:ILE:CD1	2.20	0.52
1:B:467:THR:CG2	1:B:469:VAL:HG22	2.39	0.52
1:A:390:GLY:O	1:A:393:MET:HB2	2.10	0.52
1:A:116:PRO:HG2	1:A:119:LEU:HD13	1.90	0.51
1:B:159:ARG:NH1	1:B:163:VAL:HG22	2.25	0.51
1:A:98:ALA:HB1	1:A:107:LYS:HG3	1.88	0.51
1:B:258:LEU:HD13	1:B:347:ALA:HB2	1.92	0.51
1:B:431:HIS:O	1:B:435:GLU:HG3	2.10	0.51
1:B:223:ARG:HD3	7:B:2026:HOH:O	2.11	0.51
1:B:482:PHE:HB3	1:B:484:TYR:CE1	2.45	0.51
1:A:431:HIS:O	1:A:435:GLU:HG3	2.11	0.51
1:B:356:LEU:HD12	1:B:356:LEU:H	1.75	0.51
1:A:296:PHE:CE2	1:A:339:LYS:HG2	2.46	0.51
1:A:99:THR:HG22	1:A:100:SER:N	2.26	0.51
1:B:145:TYR:HE2	1:B:159:ARG:HG2	1.75	0.51
1:B:251:PHE:O	1:B:360:ALA:HB2	2.11	0.51
1:B:374:VAL:HG21	1:B:462:VAL:CG2	2.40	0.51
1:B:127:PRO:O	1:B:129:PRO:HD3	2.11	0.50
1:A:188:TRP:CZ3	1:A:200:TRP:HA	2.47	0.50
1:A:217:MET:CE	1:A:303:LEU:HB3	2.42	0.50
1:B:194:CYS:HB2	4:B:2901:HEM:ND	2.27	0.50
1:A:132:GLU:CA	1:A:135:PRO:HD2	2.40	0.50
1:A:350:LEU:HB2	1:A:486:GLN:HE22	1.69	0.50
1:B:267:PRO:C	1:B:269:GLY:H	2.15	0.50
1:B:389:VAL:O	1:B:393:MET:HG3	2.11	0.50
1:A:485:TYR:HE1	7:A:1010:HOH:O	1.93	0.50
1:B:143:GLN:NE2	7:B:2093:HOH:O	2.45	0.50
1:A:105:LYS:CD	1:A:106:SER:N	2.74	0.50
1:B:141:ILE:CD1	1:B:163:VAL:HG21	2.37	0.50
1:B:203:LEU:HG	1:B:204:GLN:N	2.27	0.50
1:B:77:GLN:HA	1:B:77:GLN:NE2	2.27	0.50
1:B:223:ARG:HG3	1:B:223:ARG:HH11	1.77	0.50
1:A:434:SER:HB3	1:A:468:PRO:HD2	1.93	0.49
1:B:437:PHE:CE2	1:B:458:LEU:HD13	2.47	0.49
1:A:120:THR:HG22	1:A:121:ARG:N	2.27	0.49
1:B:453:ALA:HB3	1:B:474:MET:HB2	1.95	0.49
1:A:78:TYR:C	1:A:78:TYR:CD1	2.86	0.49
1:A:137:ALA:O	1:A:141:ILE:HG13	2.11	0.49

*Continued on next page...*

*Continued from previous page...*

Atom-1	Atom-2	Interatomic distance (Å)	Clash overlap (Å)
1:A:382:ARG:NH1	7:A:1041:HOH:O	2.43	0.49
1:A:410:THR:O	1:A:414:VAL:HG23	2.13	0.49
1:B:134:LEU:CD1	1:B:138:ILE:HD11	2.41	0.49
1:B:145:TYR:HA	1:B:148:PHE:CE1	2.47	0.49
1:B:252:ARG:HH21	1:B:489:PRO:HD3	1.76	0.49
1:A:95:HIS:O	1:A:98:ALA:HB2	2.13	0.49
1:B:167:ILE:HA	1:B:171:GLY:O	2.12	0.49
1:B:332:TRP:O	1:B:335:GLU:HB2	2.12	0.49
1:A:262:ALA:HB2	1:A:299:LEU:HD21	1.93	0.49
1:B:163:VAL:HG12	1:B:167:ILE:CD1	2.34	0.49
1:A:152:LYS:HD2	1:A:155:GLU:OE2	2.12	0.49
1:B:152:LYS:HD2	1:B:155:GLU:OE2	2.13	0.49
1:A:163:VAL:O	1:A:167:ILE:HG13	2.13	0.48
1:A:333:PHE:CD1	1:A:336:LEU:HD13	2.47	0.48
1:B:213:THR:OG1	1:B:216:GLU:HG3	2.13	0.48
1:A:303:LEU:HD22	1:A:313:PHE:CD2	2.48	0.48
1:A:427:ILE:HB	7:A:1035:HOH:O	2.12	0.48
1:B:340:TRP:HZ3	1:B:383:TYR:CE1	2.31	0.48
4:A:901:HEM:O2A	5:A:902:H4B:N2	2.45	0.48
1:A:267:PRO:C	1:A:269:GLY:H	2.16	0.48
6:A:906:B2:H10	7:A:1037:HOH:O	2.13	0.48
1:B:116:PRO:HG2	1:B:119:LEU:HB2	1.96	0.48
1:A:242:PRO:HG2	1:A:251:PHE:CZ	2.49	0.48
1:A:330:TYR:HE2	1:A:393:MET:HG2	1.78	0.48
1:B:328:PRO:O	1:B:329:LYS:HD3	2.13	0.48
1:B:495:TRP:HB2	7:B:2091:HOH:O	2.14	0.48
1:A:248:LYS:HE3	1:A:494:ILE:CD1	2.43	0.48
1:A:277:THR:O	1:A:278:LEU:C	2.52	0.48
1:A:376:ASP:OD1	1:A:382:ARG:NH2	2.47	0.48
1:B:94:LEU:HB2	1:B:449:GLY:O	2.14	0.48
1:B:177:LEU:HD13	1:B:181:ILE:HD13	1.95	0.48
1:B:393:MET:CE	1:B:411:GLU:HG3	2.43	0.48
1:B:249:HIS:HA	1:B:306:ASP:O	2.14	0.48
1:B:128:THR:HB	1:B:133:LEU:HD23	1.95	0.48
1:B:167:ILE:HG23	1:B:171:GLY:O	2.14	0.48
1:A:105:LYS:O	1:A:107:LYS:N	2.47	0.47
1:A:120:THR:HG23	1:A:486:GLN:HA	1.95	0.47
1:A:330:TYR:CE2	1:A:393:MET:HG2	2.49	0.47
1:B:264:TYR:CD1	1:B:264:TYR:N	2.81	0.47
1:B:489:PRO:C	1:B:491:LYS:H	2.18	0.47
1:B:188:TRP:CZ3	1:B:200:TRP:HA	2.49	0.47

*Continued on next page...*

*Continued from previous page...*

Atom-1	Atom-2	Interatomic distance (Å)	Clash overlap (Å)
1:B:411:GLU:O	1:B:414:VAL:HG13	2.13	0.47
1:A:83:ASN:C	1:A:85:GLY:H	2.17	0.47
1:A:110:LEU:N	1:A:110:LEU:HD22	2.30	0.47
1:A:303:LEU:O	1:A:310:PRO:HA	2.15	0.47
1:B:217:MET:HB3	1:B:303:LEU:HD22	1.96	0.47
1:B:447:ALA:C	1:B:449:GLY:H	2.18	0.47
1:A:105:LYS:CD	1:A:106:SER:H	2.17	0.47
1:A:116:PRO:CG	1:A:119:LEU:HD13	2.45	0.47
1:A:185:LYS:HD3	1:A:201:SER:HA	1.97	0.47
1:B:244:ARG:HB3	7:B:2032:HOH:O	2.15	0.47
1:B:350:LEU:HD23	1:B:351:LEU:N	2.29	0.47
1:A:228:ALA:HB1	1:A:364:ASN:ND2	2.29	0.47
1:A:342:ALA:HB1	1:A:425:VAL:CG1	2.44	0.47
1:A:394:GLY:O	1:A:395:LEU:O	2.33	0.47
1:A:453:ALA:HB3	1:A:474:MET:HB2	1.97	0.47
1:B:244:ARG:NH1	1:B:357:GLU:OE2	2.35	0.47
1:B:429:ASP:OD2	1:B:431:HIS:HB2	2.14	0.47
1:A:218:PHE:CD1	1:A:313:PHE:HB3	2.50	0.47
1:A:141:ILE:CD1	1:A:163:VAL:HG11	2.40	0.47
1:A:292:ARG:HG2	1:A:292:ARG:O	2.15	0.47
1:A:346:VAL:HG11	1:A:349:MET:HG3	1.96	0.47
1:A:395:LEU:CD1	1:A:395:LEU:N	2.72	0.47
1:A:465:SER:O	1:A:471:HIS:HE1	1.98	0.47
1:B:177:LEU:HD13	1:B:177:LEU:C	2.36	0.47
1:B:333:PHE:HA	1:B:336:LEU:HD22	1.95	0.47
1:B:353:VAL:O	1:B:355:GLY:N	2.48	0.47
1:B:138:ILE:HG22	1:B:142:ASN:HD21	1.79	0.46
1:A:144:TYR:CD1	1:A:145:TYR:N	2.82	0.46
1:A:217:MET:HE3	1:A:303:LEU:HB3	1.97	0.46
1:A:254:TRP:CE2	1:A:489:PRO:HB2	2.50	0.46
1:B:371:GLU:O	1:B:375:ARG:HB2	2.15	0.46
1:A:265:GLN:HG2	1:A:265:GLN:O	2.15	0.46
1:A:296:PHE:CD2	1:A:339:LYS:HG2	2.50	0.46
1:B:342:ALA:CB	1:B:425:VAL:HG11	2.45	0.46
1:A:243:GLN:HB3	1:A:358:PHE:CE2	2.50	0.46
1:A:330:TYR:CD2	1:A:332:TRP:CZ2	3.04	0.46
1:A:82:LYS:HD3	1:A:84:TRP:CE2	2.50	0.46
1:A:346:VAL:CG1	1:A:349:MET:HG3	2.46	0.46
1:B:78:TYR:C	1:B:78:TYR:HD1	2.20	0.46
1:A:330:TYR:CD1	1:A:330:TYR:N	2.76	0.46
1:A:185:LYS:O	1:A:189:ARG:HB2	2.16	0.46

*Continued on next page...*

*Continued from previous page...*

Atom-1	Atom-2	Interatomic distance (Å)	Clash overlap (Å)
1:A:330:TYR:CD2	1:A:332:TRP:HZ2	2.33	0.46
1:A:330:TYR:HD2	1:A:332:TRP:CZ2	2.34	0.46
1:B:139:GLU:HG3	1:B:140:PHE:N	2.30	0.46
1:B:350:LEU:HD23	1:B:350:LEU:C	2.36	0.46
1:A:88:GLU:HG2	1:A:89:ILE:N	2.31	0.45
1:A:387:GLU:N	6:A:907:B2:N8	2.57	0.45
1:A:413:ASN:O	1:A:417:LEU:HB2	2.16	0.45
1:B:186:MET:CE	1:B:189:ARG:HH11	2.29	0.45
1:B:252:ARG:HH21	1:B:489:PRO:CD	2.28	0.45
1:A:238:ILE:CG1	7:A:1074:HOH:O	2.64	0.45
1:B:177:LEU:HD13	1:B:177:LEU:O	2.15	0.45
1:B:488:GLU:OE1	1:B:491:LYS:HE2	2.17	0.45
1:A:443:ASN:HB2	7:A:1048:HOH:O	2.16	0.45
1:A:480:SER:HA	1:A:481:PRO:O	2.16	0.45
1:B:330:TYR:CD2	1:B:332:TRP:CZ2	3.04	0.45
1:B:397:THR:O	1:B:397:THR:CG2	2.64	0.45
1:B:198:ILE:HG12	1:B:198:ILE:O	2.17	0.45
1:B:330:TYR:HB3	1:B:332:TRP:CE2	2.51	0.45
1:A:252:ARG:HD3	1:A:359:PRO:HB2	1.99	0.45
1:A:217:MET:HG2	1:A:241:PHE:HE2	1.81	0.45
1:B:124:ARG:NH1	1:B:124:ARG:CG	2.80	0.45
1:A:412:ILE:O	1:A:415:ALA:HB3	2.17	0.45
1:B:193:ARG:HD3	1:B:457:TRP:CD2	2.52	0.45
1:B:252:ARG:NH1	1:B:486:GLN:CD	2.70	0.45
1:B:328:PRO:HB3	1:B:418:HIS:CE1	2.52	0.45
1:B:493:HIS:HD2	1:B:495:TRP:NE1	2.15	0.45
1:A:387:GLU:N	6:A:907:B2:HN8	2.11	0.45
1:A:388:GLU:H	6:A:907:B2:C1	2.30	0.45
1:B:186:MET:HE3	1:B:189:ARG:HD3	1.99	0.45
1:A:217:MET:HA	1:A:241:PHE:HE2	1.83	0.44
1:B:130:LEU:HD22	1:B:130:LEU:N	2.19	0.44
1:B:386:LEU:HA	1:B:386:LEU:HD22	1.75	0.44
1:A:266:MET:CB	1:A:267:PRO:HD2	2.33	0.44
1:B:145:TYR:CE2	1:B:159:ARG:HG2	2.52	0.44
1:B:445:TYR:CZ	1:B:450:GLY:HA2	2.52	0.44
1:B:252:ARG:NH2	1:B:489:PRO:HD3	2.33	0.44
1:A:254:TRP:HB2	1:A:302:VAL:O	2.18	0.44
1:A:391:ARG:C	1:A:393:MET:H	2.19	0.44
1:B:152:LYS:HD2	1:B:155:GLU:CD	2.38	0.44
1:A:405:LYS:O	1:A:409:VAL:HG23	2.17	0.44
1:B:327:HIS:CE1	1:B:330:TYR:CD1	3.06	0.44

*Continued on next page...*

*Continued from previous page...*

Atom-1	Atom-2	Interatomic distance (Å)	Clash overlap (Å)
1:A:221:ILE:CG2	1:A:301:LEU:HD21	2.47	0.44
1:A:262:ALA:CB	1:A:299:LEU:HD21	2.48	0.44
1:B:79:VAL:O	1:B:91:HIS:HA	2.18	0.44
1:B:323:VAL:HG12	1:B:325:MET:CE	2.47	0.44
1:B:366:TRP:O	4:B:2901:HEM:HMB3	2.18	0.44
1:A:156:HIS:O	1:A:160:LEU:HD12	2.17	0.44
1:A:298:VAL:HG21	1:A:320:VAL:HG11	1.99	0.44
1:B:167:ILE:O	1:B:171:GLY:CA	2.65	0.44
1:A:77:GLN:O	1:A:96:HIS:CE1	2.71	0.44
1:A:494:ILE:O	1:A:496:GLN:NE2	2.51	0.44
1:A:332:TRP:CE3	1:A:392:ARG:HD2	2.53	0.43
1:B:177:LEU:HD23	1:B:207:ASP:OD2	2.18	0.43
1:B:327:HIS:CE1	1:B:330:TYR:HD1	2.36	0.43
1:A:176:THR:O	1:A:179:GLU:N	2.51	0.43
1:A:228:ALA:O	1:A:234:ILE:HA	2.19	0.43
1:A:175:LEU:HA	1:A:179:GLU:OE1	2.18	0.43
1:A:496:GLN:H	1:A:496:GLN:HE21	1.66	0.43
1:B:218:PHE:HB2	1:B:313:PHE:CD2	2.54	0.43
1:A:88:GLU:HG2	1:A:89:ILE:H	1.82	0.43
1:A:176:THR:HG23	1:A:179:GLU:CD	2.39	0.43
1:A:241:PHE:CB	1:A:242:PRO:CD	2.86	0.43
1:B:375:ARG:NH1	1:B:379:ASP:OD2	2.51	0.43
1:B:445:TYR:C	1:B:447:ALA:H	2.21	0.43
1:A:180:LEU:O	1:A:184:THR:HG23	2.18	0.43
1:A:262:ALA:HB1	1:A:281:THR:HG23	2.00	0.43
1:B:95:HIS:O	1:B:98:ALA:HB2	2.18	0.43
1:B:361:CYS:O	1:B:361:CYS:SG	2.77	0.43
1:B:258:LEU:HD22	1:B:345:ALA:HB1	2.00	0.43
1:B:307:GLY:O	1:B:308:GLN:O	2.37	0.43
1:B:309:ASP:HB3	1:B:310:PRO:HD2	2.01	0.43
1:A:375:ARG:HD3	1:A:461:PRO:HB3	2.01	0.43
1:A:438:MET:HA	1:A:438:MET:CE	2.49	0.43
1:B:198:ILE:CB	1:B:440:HIS:HB2	2.49	0.43
1:B:224:HIS:O	1:B:225:ILE:C	2.56	0.43
1:B:383:TYR:O	1:B:385:ILE:CG2	2.67	0.43
1:A:253:LEU:HD12	1:A:253:LEU:N	2.33	0.42
1:A:321:LEU:HD12	1:A:322:GLU:H	1.82	0.42
1:B:110:LEU:N	1:B:110:LEU:HD22	2.34	0.42
1:B:121:ARG:HD3	1:B:121:ARG:HA	1.86	0.42
1:B:271:ILE:CD1	1:B:278:LEU:HD11	2.48	0.42
1:A:254:TRP:CZ3	1:A:490:TRP:HB3	2.54	0.42

*Continued on next page...*

*Continued from previous page...*

Atom-1	Atom-2	Interatomic distance (Å)	Clash overlap (Å)
1:B:303:LEU:CD1	1:B:313:PHE:HD2	2.31	0.42
1:B:397:THR:HG23	1:B:404:TRP:CH2	2.55	0.42
1:A:374:VAL:CG2	1:A:413:ASN:HD21	2.31	0.42
1:B:221:ILE:CD1	1:B:303:LEU:HD21	2.47	0.42
1:B:374:VAL:HG22	1:B:413:ASN:HD21	1.85	0.42
1:A:129:PRO:HB2	1:A:132:GLU:OE1	2.18	0.42
1:A:338:LEU:HD21	1:A:385:ILE:HD13	2.02	0.42
1:B:197:ARG:NH2	1:B:452:PRO:O	2.52	0.42
4:A:901:HEM:HHC	4:A:901:HEM:HBB2	2.02	0.42
1:B:330:TYR:CD1	1:B:330:TYR:N	2.88	0.42
1:B:195:ILE:HG12	1:B:195:ILE:O	2.20	0.42
1:B:207:ASP:OD1	1:B:209:ARG:HB2	2.20	0.42
1:B:265:GLN:O	1:B:266:MET:O	2.37	0.42
1:B:467:THR:HG21	1:B:469:VAL:HG22	2.01	0.42
1:A:348:ASN:HD22	1:A:348:ASN:C	2.22	0.42
1:B:326:GLU:O	1:B:326:GLU:HG3	2.20	0.42
1:B:346:VAL:HB	1:B:363:PHE:CE1	2.54	0.42
1:A:105:LYS:HB3	1:A:108:SER:O	2.19	0.42
1:A:387:GLU:OE2	1:A:397:THR:HG21	2.19	0.42
1:A:411:GLU:HA	1:A:414:VAL:HG23	2.01	0.42
1:B:77:GLN:HE21	1:B:77:GLN:CA	2.30	0.42
1:B:78:TYR:CE1	1:B:91:HIS:HD2	2.38	0.42
1:B:332:TRP:CE3	1:B:392:ARG:HD3	2.54	0.42
1:B:349:MET:HE2	1:B:483:TYR:HB3	2.01	0.42
1:A:83:ASN:O	1:A:87:GLY:N	2.48	0.41
1:A:120:THR:HG22	1:A:121:ARG:H	1.85	0.41
1:A:303:LEU:N	1:A:303:LEU:HD13	2.35	0.41
1:B:204:GLN:HG2	1:B:227:TYR:CE2	2.54	0.41
1:B:383:TYR:O	1:B:384:ASN:C	2.57	0.41
1:B:434:SER:OG	1:B:467:THR:HG23	2.20	0.41
1:A:197:ARG:NH2	1:A:437:PHE:CE1	2.88	0.41
1:A:316:PRO:O	1:A:317:PRO:C	2.59	0.41
1:A:387:GLU:HA	1:A:404:TRP:HZ3	1.85	0.41
1:A:96:HIS:C	1:A:98:ALA:H	2.24	0.41
1:B:353:VAL:HA	1:B:481:PRO:HB3	2.03	0.41
1:A:82:LYS:HD3	1:A:84:TRP:CZ2	2.55	0.41
1:A:329:LYS:O	1:A:331:GLU:N	2.54	0.41
1:A:402:SER:OG	1:A:404:TRP:HD1	2.03	0.41
1:A:438:MET:HG3	1:A:468:PRO:HB2	2.02	0.41
1:B:94:LEU:HD22	1:B:479:LEU:HD11	2.03	0.41
1:B:175:LEU:HD21	1:B:356:LEU:HD13	2.03	0.41

*Continued on next page...*



Continued from previous page...

Atom-1	Atom-2	Interatomic distance (Å)	Clash overlap (Å)
1:B:78:TYR:CZ	1:B:91:HIS:HD2	2.38	0.41
1:B:252:ARG:NH1	1:B:486:GLN:NE2	2.68	0.41
1:B:330:TYR:CD2	1:B:332:TRP:HZ2	2.38	0.41
1:A:332:TRP:CH2	1:A:392:ARG:HB2	2.56	0.41
1:A:386:LEU:HD21	1:A:409:VAL:HG22	1.99	0.41
1:B:134:LEU:HD23	1:B:167:ILE:CG2	2.50	0.41
1:B:417:LEU:HA	1:B:417:LEU:HD12	1.71	0.41
1:B:102:PHE:CG	1:B:103:THR:N	2.86	0.41
1:B:159:ARG:CZ	1:B:163:VAL:HG22	2.51	0.41
1:B:252:ARG:HH12	1:B:486:GLN:CB	2.32	0.41
1:B:258:LEU:HD12	1:B:258:LEU:HA	1.77	0.41
1:B:332:TRP:CZ3	1:B:392:ARG:HD3	2.56	0.41
1:A:282:GLN:O	1:A:285:ILE:N	2.51	0.41
1:A:329:LYS:O	1:A:330:TYR:C	2.59	0.41
1:A:262:ALA:HB1	1:A:281:THR:CG2	2.50	0.41
1:A:434:SER:CB	1:A:467:THR:OG1	2.69	0.41
1:B:226:LEU:HG	1:B:319:LEU:CD2	2.51	0.41
1:B:358:PHE:HB3	7:B:2054:HOH:O	2.19	0.41
1:B:389:VAL:O	1:B:389:VAL:HG12	2.20	0.41
1:B:488:GLU:OE1	1:B:490:TRP:CZ2	2.74	0.41
1:A:188:TRP:CE3	1:A:200:TRP:HA	2.55	0.41
1:A:482:PHE:CE2	1:A:483:TYR:O	2.74	0.41
1:B:103:THR:HG23	1:B:116:PRO:HB2	2.03	0.41
1:A:145:TYR:HE1	1:A:152:LYS:HE3	1.85	0.40
1:A:360:ALA:HA	7:A:1021:HOH:O	2.20	0.40
1:A:445:TYR:CE2	1:A:450:GLY:HA2	2.57	0.40
1:B:110:LEU:HB3	1:B:113:ILE:CG1	2.51	0.40
1:B:398:HIS:HB2	7:B:2066:HOH:O	2.21	0.40
1:B:222:CYS:O	1:B:226:LEU:HB2	2.20	0.40
1:B:493:HIS:HA	7:B:2113:HOH:O	2.20	0.40
1:A:159:ARG:NH1	1:A:163:VAL:HG22	2.36	0.40
1:B:194:CYS:O	1:B:197:ARG:HG3	2.22	0.40
1:A:188:TRP:CD1	1:A:188:TRP:C	2.95	0.40
1:A:236:SER:HA	1:A:364:ASN:O	2.21	0.40
1:A:315:ILE:HA	1:A:316:PRO:HD3	1.90	0.40
1:A:332:TRP:CZ3	1:A:392:ARG:HB2	2.57	0.40
1:A:344:PRO:O	1:A:364:ASN:HB2	2.22	0.40
1:B:78:TYR:CZ	1:B:91:HIS:CD2	3.10	0.40

There are no symmetry-related clashes.

## 5.3 Torsion angles [i](#)

### 5.3.1 Protein backbone [i](#)

In the following table, the Percentiles column shows the percent Ramachandran outliers of the chain as a percentile score with respect to all X-ray entries followed by that with respect to entries of similar resolution.

The Analysed column shows the number of residues for which the backbone conformation was analysed, and the total number of residues.

Mol	Chain	Analysed	Favoured	Allowed	Outliers	Percentiles	
1	A	418/433 (96%)	324 (78%)	71 (17%)	23 (6%)	2	5
1	B	418/433 (96%)	337 (81%)	58 (14%)	23 (6%)	2	5
All	All	836/866 (96%)	661 (79%)	129 (15%)	46 (6%)	2	5

All (46) Ramachandran outliers are listed below:

Mol	Chain	Res	Type
1	A	84	TRP
1	A	99	THR
1	A	108	SER
1	A	268	ASP
1	A	278	LEU
1	A	395	LEU
1	A	397	THR
1	B	268	ASP
1	B	308	GLN
1	A	230	ASN
1	A	293	TYR
1	A	369	GLY
1	B	99	THR
1	B	100	SER
1	B	130	LEU
1	B	200	TRP
1	B	212	SER
1	B	248	LYS
1	B	293	TYR
1	B	354	GLY
1	B	384	ASN
1	B	448	ARG
1	B	490	TRP
1	A	308	GLN
1	A	330	TYR

*Continued on next page...*

*Continued from previous page...*

Mol	Chain	Res	Type
1	A	426	THR
1	B	306	ASP
1	A	107	LYS
1	B	153	ILE
1	B	266	MET
1	B	307	GLY
1	B	400	LEU
1	A	123	PRO
1	A	127	PRO
1	A	144	TYR
1	A	266	MET
1	B	129	PRO
1	B	247	GLY
1	A	129	PRO
1	A	200	TRP
1	A	267	PRO
1	B	344	PRO
1	A	487	ILE
1	B	369	GLY
1	A	449	GLY
1	B	449	GLY

### 5.3.2 Protein sidechains [i](#)

In the following table, the Percentiles column shows the percent sidechain outliers of the chain as a percentile score with respect to all X-ray entries followed by that with respect to entries of similar resolution.

The Analysed column shows the number of residues for which the sidechain conformation was analysed, and the total number of residues.

Mol	Chain	Analysed	Rotameric	Outliers	Percentiles	
1	A	368/381 (97%)	341 (93%)	27 (7%)	14	38
1	B	368/381 (97%)	338 (92%)	30 (8%)	11	32
All	All	736/762 (97%)	679 (92%)	57 (8%)	13	35

All (57) residues with a non-rotameric sidechain are listed below:

Mol	Chain	Res	Type
1	A	78	TYR
1	A	94	LEU

*Continued on next page...*

*Continued from previous page...*

<b>Mol</b>	<b>Chain</b>	<b>Res</b>	<b>Type</b>
1	A	101	ASP
1	A	104	CYS
1	A	110	LEU
1	A	129	PRO
1	A	161	GLU
1	A	170	THR
1	A	180	LEU
1	A	258	LEU
1	A	268	ASP
1	A	301	LEU
1	A	303	LEU
1	A	304	GLN
1	A	317	PRO
1	A	324	THR
1	A	330	TYR
1	A	348	ASN
1	A	379	ASP
1	A	386	LEU
1	A	395	LEU
1	A	396	GLU
1	A	403	LEU
1	A	417	LEU
1	A	434	SER
1	A	446	ARG
1	A	496	GLN
1	B	78	TYR
1	B	94	LEU
1	B	119	LEU
1	B	129	PRO
1	B	133	LEU
1	B	148	PHE
1	B	153	ILE
1	B	210	ASN
1	B	226	LEU
1	B	231	ASN
1	B	257	GLN
1	B	258	LEU
1	B	264	TYR
1	B	268	ASP
1	B	292	ARG
1	B	303	LEU
1	B	317	PRO

*Continued on next page...*

*Continued from previous page...*

Mol	Chain	Res	Type
1	B	324	THR
1	B	336	LEU
1	B	348	ASN
1	B	372	ILE
1	B	386	LEU
1	B	407	ARG
1	B	414	VAL
1	B	417	LEU
1	B	421	GLN
1	B	446	ARG
1	B	448	ARG
1	B	462	VAL
1	B	496	GLN

Sometimes sidechains can be flipped to improve hydrogen bonding and reduce clashes. All (26) such sidechains are listed below:

Mol	Chain	Res	Type
1	A	77	GLN
1	A	91	HIS
1	A	95	HIS
1	A	96	HIS
1	A	231	ASN
1	A	233	ASN
1	A	249	HIS
1	A	257	GLN
1	A	308	GLN
1	A	334	GLN
1	A	348	ASN
1	A	443	ASN
1	A	471	HIS
1	A	496	GLN
1	B	77	GLN
1	B	91	HIS
1	B	95	HIS
1	B	96	HIS
1	B	115	ASN
1	B	210	ASN
1	B	220	HIS
1	B	231	ASN
1	B	243	GLN
1	B	249	HIS
1	B	348	ASN

*Continued on next page...*

*Continued from previous page...*

Mol	Chain	Res	Type
1	B	493	HIS

### 5.3.3 RNA [i](#)

There are no RNA molecules in this entry.

## 5.4 Non-standard residues in protein, DNA, RNA chains [i](#)

There are no non-standard protein/DNA/RNA residues in this entry.

## 5.5 Carbohydrates [i](#)

There are no monosaccharides in this entry.

## 5.6 Ligand geometry [i](#)

Of 10 ligands modelled in this entry, 2 are monoatomic - leaving 8 for Mogul analysis.

In the following table, the Counts columns list the number of bonds (or angles) for which Mogul statistics could be retrieved, the number of bonds (or angles) that are observed in the model and the number of bonds (or angles) that are defined in the Chemical Component Dictionary. The Link column lists molecule types, if any, to which the group is linked. The Z score for a bond length (or angle) is the number of standard deviations the observed value is removed from the expected value. A bond length (or angle) with  $|Z| > 2$  is considered an outlier worth inspection. RMSZ is the root-mean-square of all Z scores of the bond lengths (or angles).

Mol	Type	Chain	Res	Link	Bond lengths			Bond angles		
					Counts	RMSZ	# Z  > 2	Counts	RMSZ	# Z  > 2
6	B2	A	907	-	16,19,19	1.83	4 (25%)	15,27,27	1.34	3 (20%)
6	B2	B	2906	-	16,19,19	1.63	3 (18%)	15,27,27	1.44	2 (13%)
5	H4B	B	2902	-	16,18,18	1.29	2 (12%)	14,26,26	4.00	7 (50%)
4	HEM	B	2901	-	42,50,50	1.44	8 (19%)	46,82,82	1.67	12 (26%)
6	B2	A	906	-	16,19,19	1.58	5 (31%)	15,27,27	1.35	2 (13%)
2	SO4	A	903	-	4,4,4	0.38	0	6,6,6	0.11	0
4	HEM	A	901	1	42,50,50	1.56	8 (19%)	46,82,82	1.89	9 (19%)
5	H4B	A	902	-	16,18,18	1.38	3 (18%)	14,26,26	4.32	6 (42%)

In the following table, the Chirals column lists the number of chiral outliers, the number of chiral centers analysed, the number of these observed in the model and the number defined in the

Chemical Component Dictionary. Similar counts are reported in the Torsion and Rings columns. '-' means no outliers of that kind were identified.

Mol	Type	Chain	Res	Link	Chirals	Torsions	Rings
6	B2	A	907	-	-	0/0/16/16	0/2/3/3
6	B2	B	2906	-	-	0/0/16/16	0/2/3/3
5	H4B	B	2902	-	-	0/8/17/17	0/2/2/2
4	HEM	B	2901	-	-	4/12/54/54	-
6	B2	A	906	-	-	0/0/16/16	0/2/3/3
4	HEM	A	901	1	-	1/12/54/54	-
5	H4B	A	902	-	-	0/8/17/17	0/2/2/2

All (33) bond length outliers are listed below:

Mol	Chain	Res	Type	Atoms	Z	Observed(Å)	Ideal(Å)
6	A	907	B2	C4A-C4	4.18	1.46	1.39
4	A	901	HEM	C3C-CAC	-3.83	1.38	1.47
5	A	902	H4B	C7-C6	-3.35	1.49	1.52
6	B	2906	B2	C4A-C4	3.31	1.44	1.39
4	A	901	HEM	C3B-C4B	3.08	1.50	1.44
4	A	901	HEM	C3C-C4C	3.06	1.45	1.41
4	B	2901	HEM	C3C-CAC	-2.86	1.40	1.47
4	A	901	HEM	CHB-C1B	2.78	1.41	1.34
4	B	2901	HEM	CHA-C4D	2.70	1.41	1.34
6	A	907	B2	C5-N6	2.61	1.36	1.29
6	A	906	B2	C4A-C4	2.59	1.43	1.39
4	A	901	HEM	C4D-ND	-2.53	1.35	1.40
6	A	906	B2	C8A-N8	-2.49	1.34	1.39
5	B	2902	H4B	C4A-C8A	2.44	1.46	1.41
5	A	902	H4B	C4A-C8A	2.39	1.45	1.41
4	B	2901	HEM	C3B-C4B	2.39	1.49	1.44
4	A	901	HEM	C2C-C1C	2.37	1.47	1.42
4	B	2901	HEM	CAB-C3B	-2.37	1.41	1.47
5	A	902	H4B	C7-N8	-2.35	1.40	1.44
4	A	901	HEM	FE-NB	2.30	2.10	1.98
6	B	2906	B2	C8A-N8	-2.23	1.35	1.39
4	B	2901	HEM	FE-NB	2.23	2.10	1.98
6	A	906	B2	C9-S13	-2.18	1.69	1.73
5	B	2902	H4B	C9-C6	2.16	1.57	1.53
6	A	906	B2	C5-N6	2.15	1.34	1.29
6	B	2906	B2	F15-C4	-2.14	1.29	1.35
4	B	2901	HEM	C3C-C4C	2.12	1.44	1.41
4	B	2901	HEM	CHB-C1B	2.10	1.39	1.34
4	A	901	HEM	CAB-C3B	-2.09	1.41	1.47
6	A	906	B2	C11-C10	-2.08	1.33	1.39

*Continued on next page...*

*Continued from previous page...*

Mol	Chain	Res	Type	Atoms	Z	Observed(Å)	Ideal(Å)
6	A	907	B2	C3-C4	2.07	1.42	1.37
6	A	907	B2	C8A-N8	-2.03	1.35	1.39
4	B	2901	HEM	C4D-C3D	2.02	1.48	1.45

All (41) bond angle outliers are listed below:

Mol	Chain	Res	Type	Atoms	Z	Observed(°)	Ideal(°)
5	A	902	H4B	C11-C10-C9	11.20	125.82	112.11
5	B	2902	H4B	C11-C10-C9	10.24	124.66	112.11
5	A	902	H4B	C4-C4A-N5	6.81	128.30	118.57
4	A	901	HEM	CMD-C2D-C1D	6.28	134.84	125.03
5	A	902	H4B	C2-N3-C4	5.87	124.13	115.96
5	B	2902	H4B	C2-N3-C4	5.63	123.79	115.96
5	B	2902	H4B	C4-C4A-N5	5.47	126.38	118.57
5	B	2902	H4B	N2-C2-N1	5.12	124.91	117.22
5	A	902	H4B	N2-C2-N1	4.58	124.08	117.22
5	A	902	H4B	N1-C2-N3	-4.08	119.23	125.48
5	B	2902	H4B	N1-C2-N3	-3.92	119.48	125.48
4	B	2901	HEM	C4B-CHC-C1C	3.80	127.58	122.56
4	B	2901	HEM	CAD-C3D-C2D	-3.79	120.78	127.87
4	A	901	HEM	C1D-C2D-C3D	-3.67	103.12	106.98
4	B	2901	HEM	CAD-C3D-C4D	3.65	131.06	124.70
4	A	901	HEM	CAD-C3D-C2D	-3.58	121.15	127.87
4	A	901	HEM	C4B-CHC-C1C	3.55	127.24	122.56
4	A	901	HEM	C4C-CHD-C1D	3.48	127.15	122.56
4	B	2901	HEM	C4C-CHD-C1D	3.29	126.90	122.56
6	B	2906	B2	C11-C12-S13	-3.28	110.32	112.98
6	A	906	B2	C11-C12-S13	-3.18	110.40	112.98
4	A	901	HEM	C3B-C2B-C1B	2.96	108.63	106.41
6	A	907	B2	C11-C12-S13	-2.86	110.66	112.98
4	A	901	HEM	C4D-C3D-C2D	2.84	111.03	106.89
4	B	2901	HEM	CMD-C2D-C1D	2.71	129.27	125.03
4	A	901	HEM	C4B-C3B-C2B	-2.69	104.81	107.28
6	A	906	B2	C3-C4-C4A	-2.52	118.86	123.48
4	B	2901	HEM	C3B-C2B-C1B	2.43	108.24	106.41
6	B	2906	B2	C3-C4-C4A	-2.38	119.11	123.48
4	B	2901	HEM	CAB-C3B-C2B	-2.38	120.71	128.43
5	A	902	H4B	C2-N1-C8A	2.35	120.17	114.59
6	A	907	B2	C3-C4-C4A	-2.33	119.21	123.48
4	B	2901	HEM	CMC-C2C-C3C	2.26	129.20	124.68
4	B	2901	HEM	CHC-C4B-C3B	2.21	127.95	124.57
5	B	2902	H4B	C2-N1-C8A	2.20	119.81	114.59

*Continued on next page...*



*Continued from previous page...*

Mol	Chain	Res	Type	Atoms	Z	Observed(°)	Ideal(°)
4	B	2901	HEM	CHC-C4B-NB	-2.19	122.08	124.44
4	B	2901	HEM	C2C-C3C-C4C	-2.08	105.45	106.90
5	B	2902	H4B	C4A-N5-C6	-2.07	115.53	121.16
6	A	907	B2	C8A-N8-C7	2.05	124.06	119.17
4	A	901	HEM	CHC-C4B-C3B	2.01	127.64	124.57
4	B	2901	HEM	CAB-C3B-C4B	2.00	133.23	124.39

There are no chirality outliers.

All (5) torsion outliers are listed below:

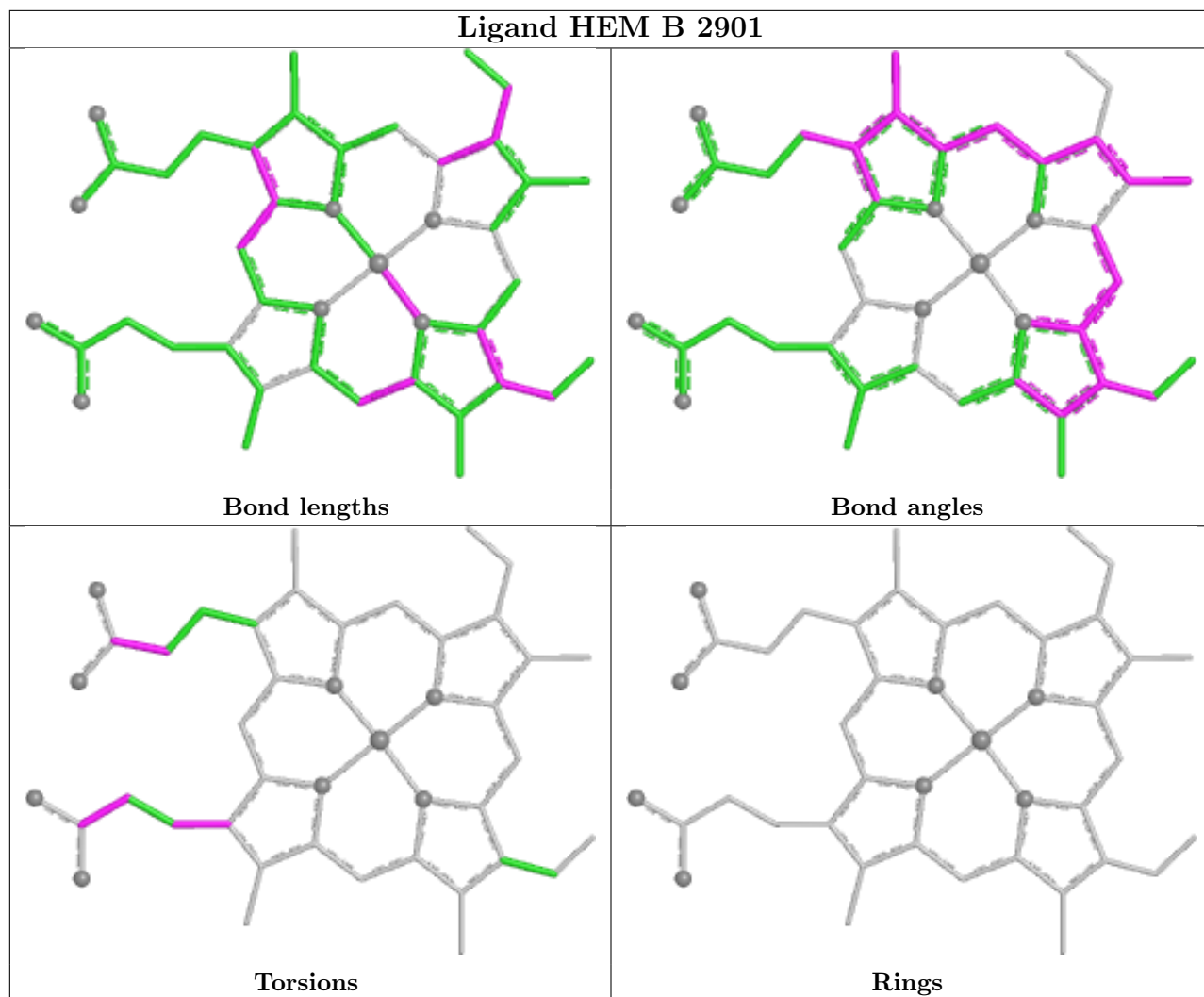
Mol	Chain	Res	Type	Atoms
4	A	901	HEM	C4B-C3B-CAB-CBB
4	B	2901	HEM	C1A-C2A-CAA-CBA
4	B	2901	HEM	CAA-CBA-CGA-O2A
4	B	2901	HEM	CAA-CBA-CGA-O1A
4	B	2901	HEM	CAD-CBD-CGD-O2D

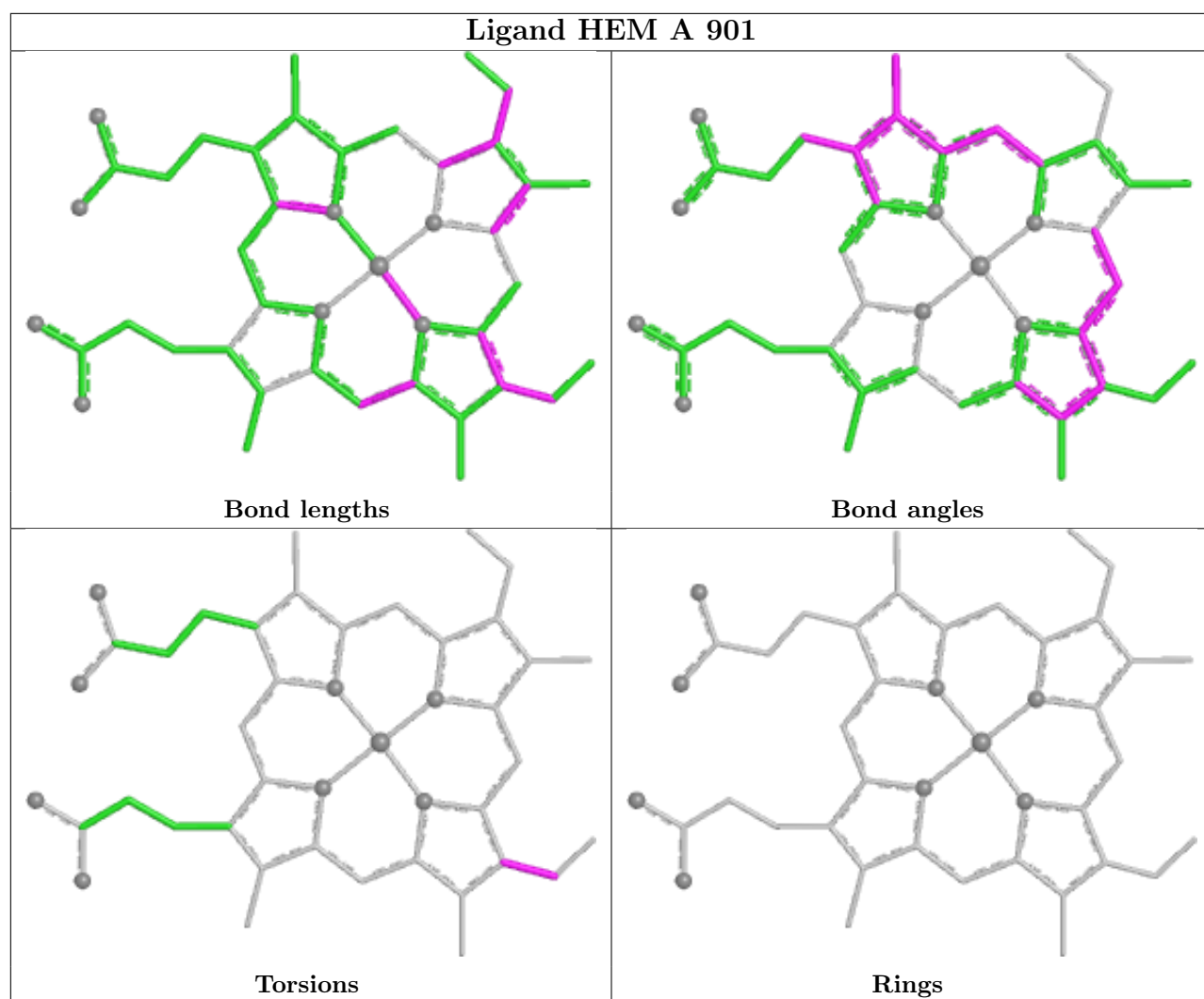
There are no ring outliers.

5 monomers are involved in 14 short contacts:

Mol	Chain	Res	Type	Clashes	Symm-Clashes
6	A	907	B2	7	0
4	B	2901	HEM	2	0
6	A	906	B2	1	0
4	A	901	HEM	4	0
5	A	902	H4B	1	0

The following is a two-dimensional graphical depiction of Mogul quality analysis of bond lengths, bond angles, torsion angles, and ring geometry for all instances of the Ligand of Interest. In addition, ligands with molecular weight > 250 and outliers as shown on the validation Tables will also be included. For torsion angles, if less than 5% of the Mogul distribution of torsion angles is within 10 degrees of the torsion angle in question, then that torsion angle is considered an outlier. Any bond that is central to one or more torsion angles identified as an outlier by Mogul will be highlighted in the graph. For rings, the root-mean-square deviation (RMSD) between the ring in question and similar rings identified by Mogul is calculated over all ring torsion angles. If the average RMSD is greater than 60 degrees and the minimal RMSD between the ring in question and any Mogul-identified rings is also greater than 60 degrees, then that ring is considered an outlier. The outliers are highlighted in purple. The color gray indicates Mogul did not find sufficient equivalents in the CSD to analyse the geometry.





## 5.7 Other polymers [i](#)

There are no such residues in this entry.

## 5.8 Polymer linkage issues [i](#)

There are no chain breaks in this entry.

## 6 Fit of model and data

### 6.1 Protein, DNA and RNA chains

In the following table, the column labelled ‘#RSRZ > 2’ contains the number (and percentage) of RSRZ outliers, followed by percent RSRZ outliers for the chain as percentile scores relative to all X-ray entries and entries of similar resolution. The OWAB column contains the minimum, median, 95<sup>th</sup> percentile and maximum values of the occupancy-weighted average B-factor per residue. The column labelled ‘Q < 0.9’ lists the number of (and percentage) of residues with an average occupancy less than 0.9.

Mol	Chain	Analysed	<RSRZ>	#RSRZ>2	OWAB(Å <sup>2</sup> )	Q<0.9
1	A	420/433 (96%)	-0.10	10 (2%) 59 56	46, 73, 115, 129	0
1	B	420/433 (96%)	-0.12	13 (3%) 49 44	40, 72, 110, 126	0
All	All	840/866 (96%)	-0.11	23 (2%) 54 50	40, 72, 111, 129	0

All (23) RSRZ outliers are listed below:

Mol	Chain	Res	Type	RSRZ
1	B	101	ASP	4.0
1	A	78	TYR	3.2
1	B	106	SER	3.1
1	B	494	ILE	3.0
1	B	100	SER	3.0
1	B	152	LYS	2.9
1	B	103	THR	2.9
1	A	152	LYS	2.8
1	A	150	GLU	2.7
1	B	150	GLU	2.6
1	A	77	GLN	2.6
1	B	148	PHE	2.6
1	A	105	LYS	2.5
1	B	446	ARG	2.5
1	B	102	PHE	2.3
1	A	106	SER	2.2
1	A	151	ALA	2.2
1	A	398	HIS	2.2
1	B	271	ILE	2.2
1	A	495	TRP	2.1
1	B	496	GLN	2.1
1	B	249	HIS	2.1
1	A	329	LYS	2.0

## 6.2 Non-standard residues in protein, DNA, RNA chains [i](#)

There are no non-standard protein/DNA/RNA residues in this entry.

## 6.3 Carbohydrates [i](#)

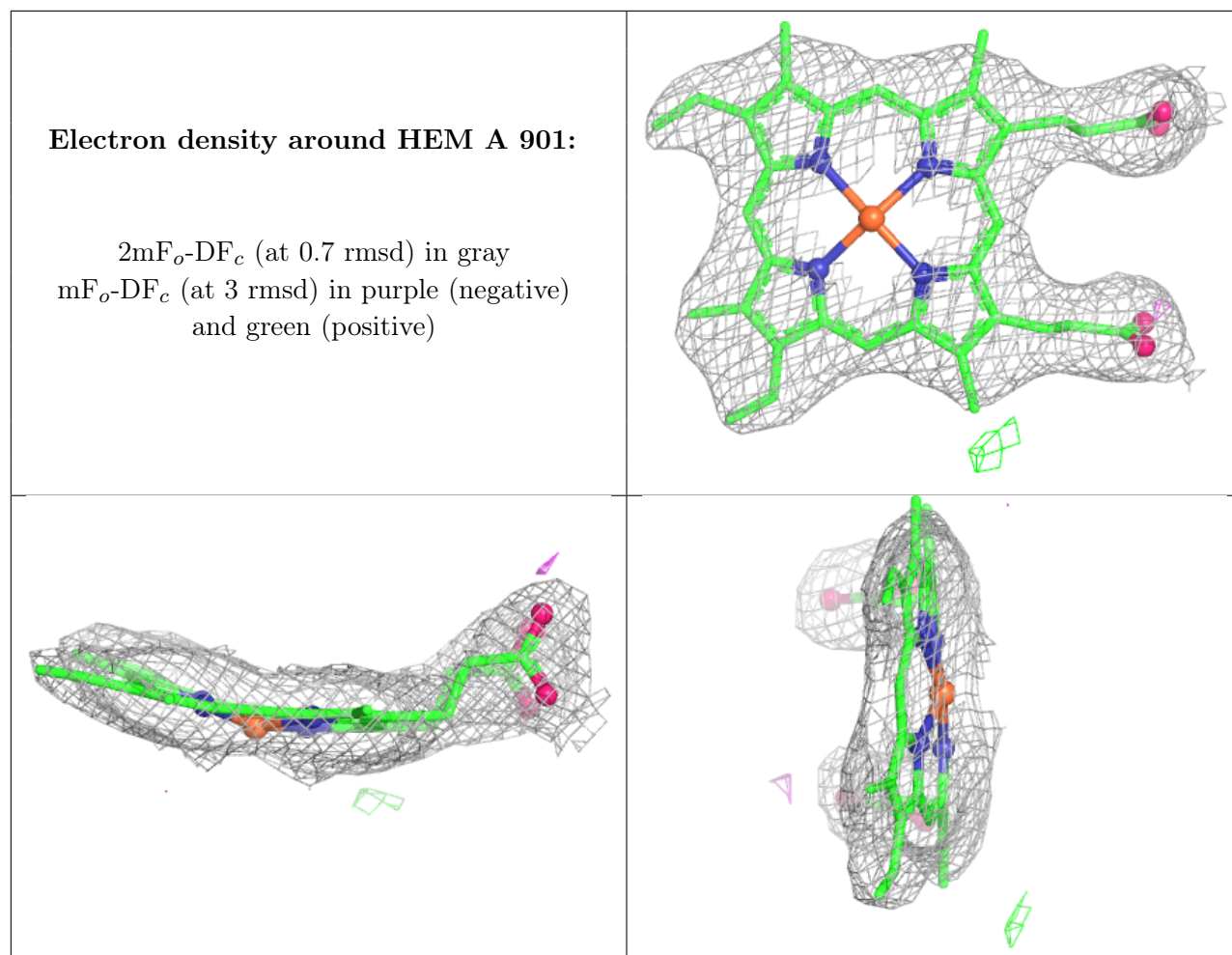
There are no monosaccharides in this entry.

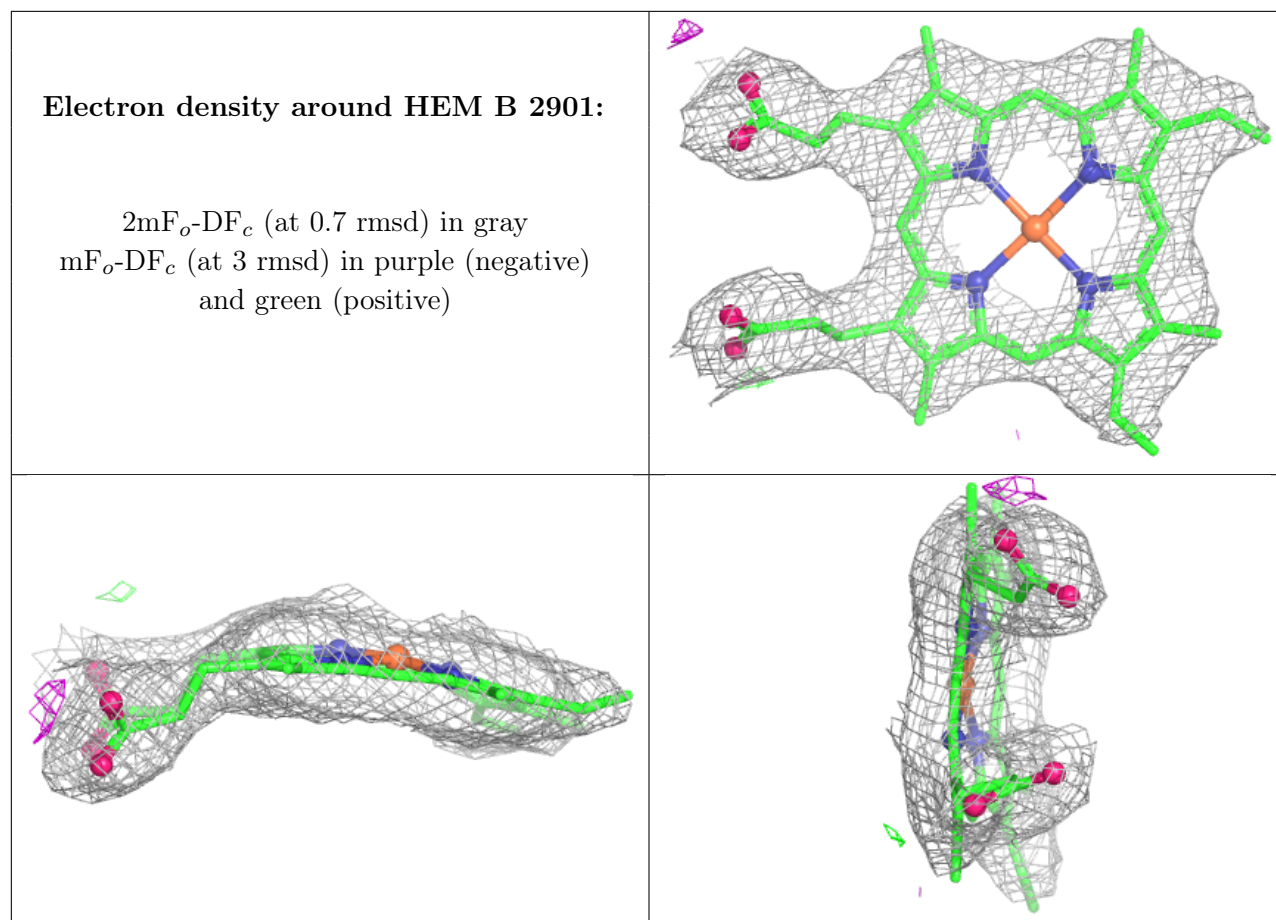
## 6.4 Ligands [i](#)

In the following table, the Atoms column lists the number of modelled atoms in the group and the number defined in the chemical component dictionary. The B-factors column lists the minimum, median, 95<sup>th</sup> percentile and maximum values of B factors of atoms in the group. The column labelled 'Q< 0.9' lists the number of atoms with occupancy less than 0.9.

Mol	Type	Chain	Res	Atoms	RSCC	RSR	B-factors( $\text{\AA}^2$ )	Q<0.9
6	B2	A	907	17/17	0.73	0.38	141,143,146,147	0
2	SO4	A	903	5/5	0.92	0.13	109,110,110,110	0
5	H4B	B	2902	17/17	0.95	0.17	57,60,62,62	0
5	H4B	A	902	17/17	0.95	0.16	57,60,62,63	0
6	B2	A	906	17/17	0.96	0.14	50,52,58,62	0
4	HEM	A	901	43/43	0.97	0.15	33,45,53,56	0
3	ZN	A	904	1/1	0.98	0.16	74,74,74,74	1
4	HEM	B	2901	43/43	0.98	0.14	44,48,52,58	0
3	ZN	B	2903	1/1	0.98	0.17	61,61,61,61	1
6	B2	B	2906	17/17	0.98	0.13	52,54,63,65	0

The following is a graphical depiction of the model fit to experimental electron density of all instances of the Ligand of Interest. In addition, ligands with molecular weight > 250 and outliers as shown on the geometry validation Tables will also be included. Each fit is shown from different orientation to approximate a three-dimensional view.





## 6.5 Other polymers [i](#)

There are no such residues in this entry.