



Full wwPDB X-ray Structure Validation Report ⓘ

Feb 11, 2024 – 10:52 PM EST

PDB ID : 3E6L
Title : Structure of murine INOS oxygenase domain with inhibitor AR-C132283
Authors : Garcin, E.D.; Arvai, A.S.; Rosenfeld, R.J.; Kroeger, M.D.; Crane, B.R.; Anderson, G.; Andrews, G.; Hamley, P.J.; Mallinder, P.R.; Nicholls, D.J.; St-Gallay, S.A.; Tinker, A.C.; Gensmantel, N.P.; Mete, A.; Cheshire, D.R.; Connolly, S.; Stueh, D.J.; Aberg, A.; Wallace, A.V.; Tainer, J.A.; Getzoff, E.D.
Deposited on : 2008-08-15
Resolution : 2.30 Å(reported)

This is a Full wwPDB X-ray Structure Validation Report for a publicly released PDB entry.

We welcome your comments at validation@mail.wwpdb.org

A user guide is available at

<https://www.wwpdb.org/validation/2017/XrayValidationReportHelp>

with specific help available everywhere you see the ⓘ symbol.

The types of validation reports are described at

<http://www.wwpdb.org/validation/2017/FAQs#types>.

The following versions of software and data (see [references](#) ①) were used in the production of this report:

MolProbity : 4.02b-467
Mogul : 1.8.5 (274361), CSD as541be (2020)
Xtrriage (Phenix) : 1.13
EDS : 2.36
buster-report : 1.1.7 (2018)
Percentile statistics : 20191225.v01 (using entries in the PDB archive December 25th 2019)
Refmac : 5.8.0158
CCP4 : 7.0.044 (Gargrove)
Ideal geometry (proteins) : Engh & Huber (2001)
Ideal geometry (DNA, RNA) : Parkinson et al. (1996)
Validation Pipeline (wwPDB-VP) : 2.36

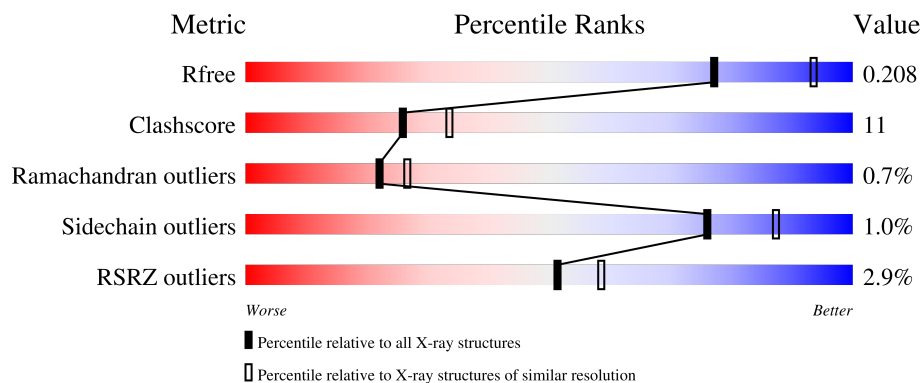
1 Overall quality at a glance i

The following experimental techniques were used to determine the structure:

X-RAY DIFFRACTION

The reported resolution of this entry is 2.30 Å.

Percentile scores (ranging between 0-100) for global validation metrics of the entry are shown in the following graphic. The table shows the number of entries on which the scores are based.



Metric	Whole archive (#Entries)	Similar resolution (#Entries, resolution range(Å))
R_{free}	130704	5042 (2.30-2.30)
Clashscore	141614	5643 (2.30-2.30)
Ramachandran outliers	138981	5575 (2.30-2.30)
Sidechain outliers	138945	5575 (2.30-2.30)
RSRZ outliers	127900	4938 (2.30-2.30)

The table below summarises the geometric issues observed across the polymeric chains and their fit to the electron density. The red, orange, yellow and green segments of the lower bar indicate the fraction of residues that contain outliers for ≥ 3 , 2, 1 and 0 types of geometric quality criteria respectively. A grey segment represents the fraction of residues that are not modelled. The numeric value for each fraction is indicated below the corresponding segment, with a dot representing fractions $\leq 5\%$. The upper red bar (where present) indicates the fraction of residues that have poor fit to the electron density. The numeric value is given above the bar.

Mol	Chain	Length	Quality of chain
1	A	433	 3% 72% 22% • 5%
1	B	433	 3% 74% 21% • 5%

The following table lists non-polymeric compounds, carbohydrate monomers and non-standard residues in protein, DNA, RNA chains that are outliers for geometric or electron-density-fit criteria:

Mol	Type	Chain	Res	Chirality	Geometry	Clashes	Electron density
2	BOG	A	4001	-	-	-	X
5	H4B	A	902	X	-	-	-
5	H4B	B	1902	X	-	-	-

2 Entry composition [i](#)

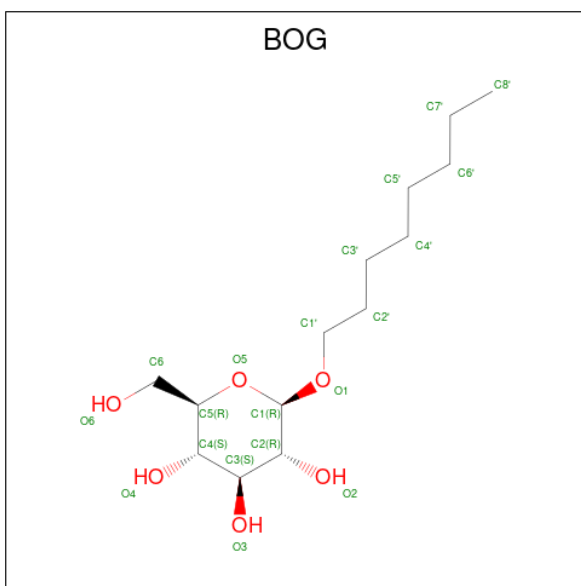
There are 7 unique types of molecules in this entry. The entry contains 7512 atoms, of which 0 are hydrogens and 0 are deuteriums.

In the tables below, the ZeroOcc column contains the number of atoms modelled with zero occupancy, the AltConf column contains the number of residues with at least one atom in alternate conformation and the Trace column contains the number of residues modelled with at most 2 atoms.

- Molecule 1 is a protein called Nitric oxide synthase, inducible.

Mol	Chain	Residues	Atoms					ZeroOcc	AltConf	Trace
			Total	C	N	O	S			
1	A	413	Total 3364	C 2157	N 580	O 607	S 20	0	0	0
1	B	413	Total 3360	C 2155	N 579	O 606	S 20	0	0	0

- Molecule 2 is octyl beta-D-glucopyranoside (three-letter code: BOG) (formula: C₁₄H₂₈O₆).



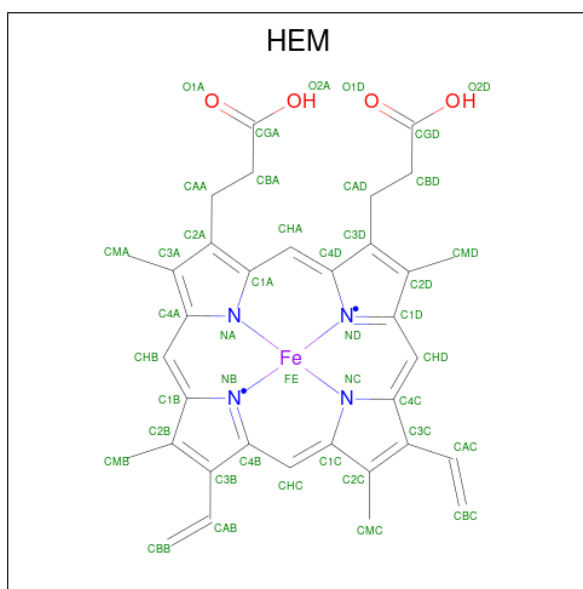
Mol	Chain	Residues	Atoms			ZeroOcc	AltConf
			Total	C	O		
2	A	1	Total 20	C 14	O 6	0	0
2	B	1	Total 20	C 14	O 6	0	0

- Molecule 3 is SULFATE ION (three-letter code: SO4) (formula: O₄S).



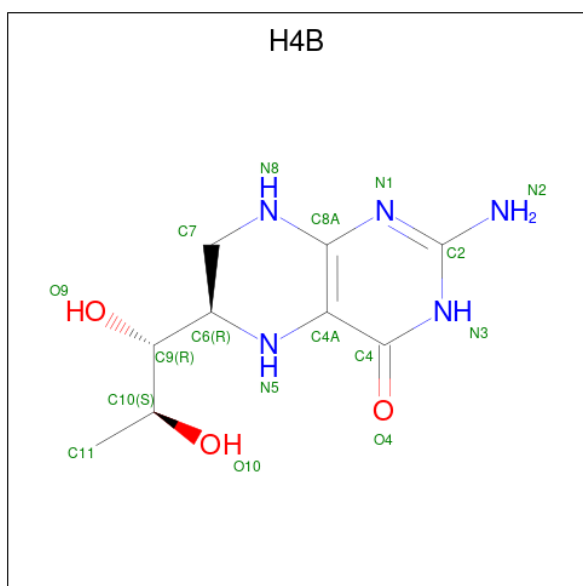
Mol	Chain	Residues	Atoms			ZeroOcc	AltConf
3	A	1	Total	O	S	0	0
			5	4	1		
3	A	1	Total	O	S	0	0
			5	4	1		
3	A	1	Total	O	S	0	0
			5	4	1		
3	A	1	Total	O	S	0	0
			5	4	1		
3	A	1	Total	O	S	0	0
			5	4	1		
3	B	1	Total	O	S	0	0
			5	4	1		
3	B	1	Total	O	S	0	0
			5	4	1		
3	B	1	Total	O	S	0	0
			5	4	1		

- Molecule 4 is PROTOPORPHYRIN IX CONTAINING FE (three-letter code: HEM) (formula: C₃₄H₃₂FeN₄O₄).



Mol	Chain	Residues	Atoms				ZeroOcc	AltConf	
			Total	C	Fe	N			O
4	A	1	43	34	1	4	4	0	0
4	B	1	43	34	1	4	4	0	0

- Molecule 5 is 5,6,7,8-TETRAHYDROBIOPTERIN (three-letter code: H4B) (formula: $C_9H_{15}N_5O_3$).



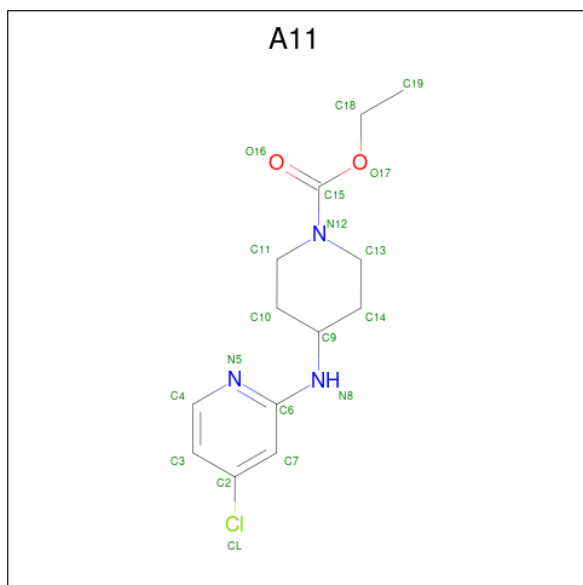
Mol	Chain	Residues	Atoms				ZeroOcc	AltConf
			Total	C	N	O		
5	A	1	17	9	5	3	0	0

Continued on next page...

Continued from previous page...

Mol	Chain	Residues	Atoms				ZeroOcc	AltConf
			Total	C	N	O		
5	B	1	17	9	5	3	0	0

- Molecule 6 is ETHYL 4-[(4-CHLOROPYRIDIN-2-YL)AMINO]PIPERIDINE-1-CARBOXYLATE (three-letter code: A11) (formula: C₁₃H₁₈ClN₃O₂).



Mol	Chain	Residues	Atoms				ZeroOcc	AltConf	
			Total	C	Cl	N			O
6	A	1	19	13	1	3	2	0	0
6	B	1	19	13	1	3	2	0	0

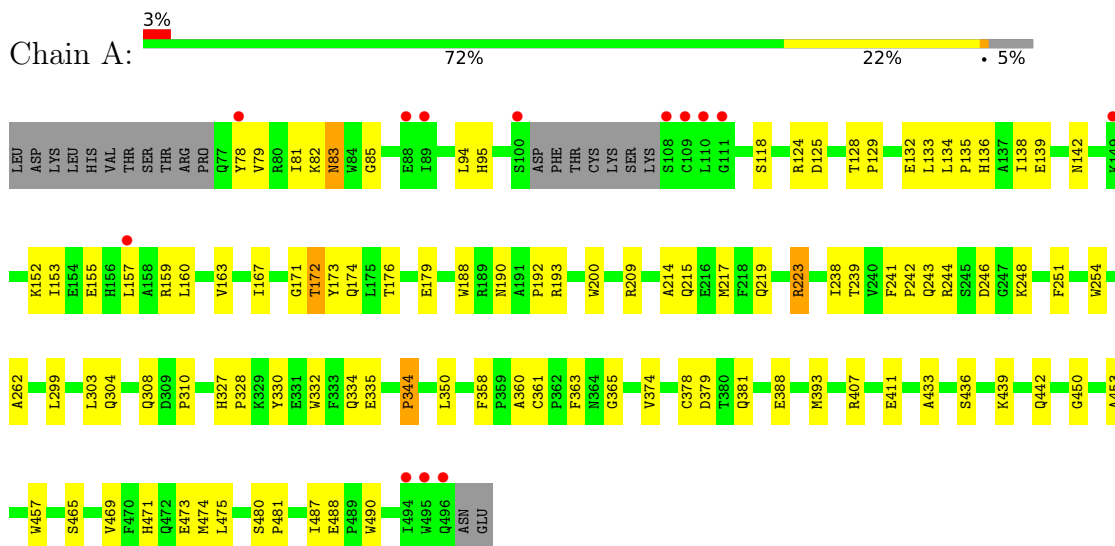
- Molecule 7 is water.

Mol	Chain	Residues	Atoms		ZeroOcc	AltConf
			Total	O		
7	A	274	274	274	0	0
7	B	271	271	271	0	0

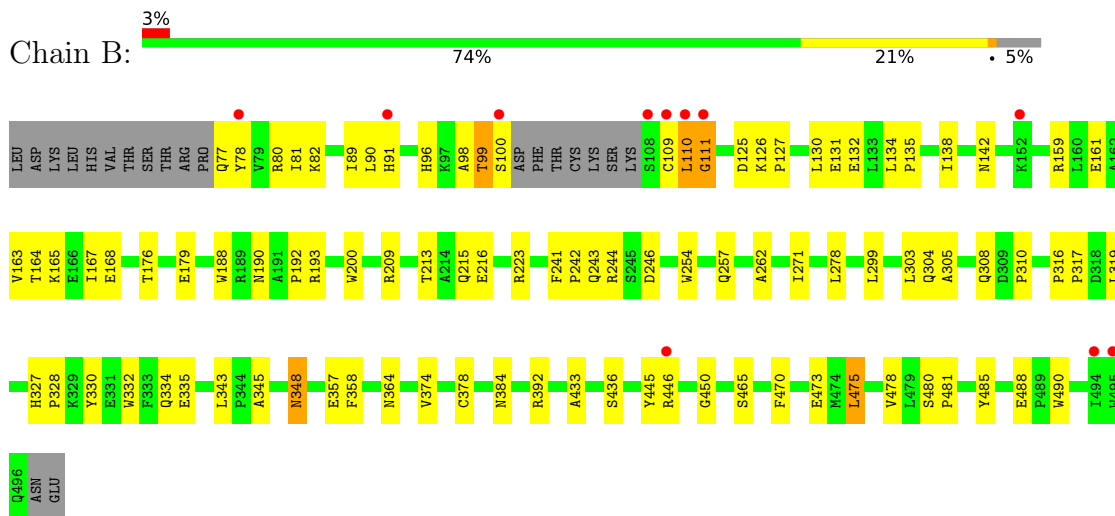
3 Residue-property plots [i](#)

These plots are drawn for all protein, RNA, DNA and oligosaccharide chains in the entry. The first graphic for a chain summarises the proportions of the various outlier classes displayed in the second graphic. The second graphic shows the sequence view annotated by issues in geometry and electron density. Residues are color-coded according to the number of geometric quality criteria for which they contain at least one outlier: green = 0, yellow = 1, orange = 2 and red = 3 or more. A red dot above a residue indicates a poor fit to the electron density ($RSRZ > 2$). Stretches of 2 or more consecutive residues without any outlier are shown as a green connector. Residues present in the sample, but not in the model, are shown in grey.

- Molecule 1: Nitric oxide synthase, inducible



- Molecule 1: Nitric oxide synthase, inducible



4 Data and refinement statistics

Property	Value	Source
Space group	P 61 2 2	Depositor
Cell constants a, b, c, α , β , γ	213.90Å 213.90Å 116.15Å 90.00° 90.00° 120.00°	Depositor
Resolution (Å)	29.98 – 2.30 29.98 – 2.30	Depositor EDS
% Data completeness (in resolution range)	92.5 (29.98-2.30) 92.5 (29.98-2.30)	Depositor EDS
R_{merge}	0.04	Depositor
R_{sym}	(Not available)	Depositor
$\langle I/\sigma(I) \rangle$ ¹	0.50 (at 2.29Å)	Xtrriage
Refinement program	CNS 1.1	Depositor
R, R_{free}	0.219 , 0.244 0.205 , 0.208	Depositor DCC
R_{free} test set	3464 reflections (5.09%)	wwPDB-VP
Wilson B-factor (Å ²)	36.2	Xtrriage
Anisotropy	0.725	Xtrriage
Bulk solvent k_{sol} (e/Å ³), B_{sol} (Å ²)	0.33 , 52.4	EDS
L-test for twinning ²	$\langle L \rangle = 0.49$, $\langle L^2 \rangle = 0.33$	Xtrriage
Estimated twinning fraction	No twinning to report.	Xtrriage
F_o, F_c correlation	0.95	EDS
Total number of atoms	7512	wwPDB-VP
Average B, all atoms (Å ²)	46.0	wwPDB-VP

Xtrriage's analysis on translational NCS is as follows: *The largest off-origin peak in the Patterson function is 1.98% of the height of the origin peak. No significant pseudotranslation is detected.*

¹Intensities estimated from amplitudes.

²Theoretical values of $\langle |L| \rangle$, $\langle L^2 \rangle$ for acentric reflections are 0.5, 0.333 respectively for untwinned datasets, and 0.375, 0.2 for perfectly twinned datasets.

5 Model quality [i](#)

5.1 Standard geometry [i](#)

Bond lengths and bond angles in the following residue types are not validated in this section: H4B, A11, HEM, SO4, BOG

The Z score for a bond length (or angle) is the number of standard deviations the observed value is removed from the expected value. A bond length (or angle) with $|Z| > 5$ is considered an outlier worth inspection. RMSZ is the root-mean-square of all Z scores of the bond lengths (or angles).

Mol	Chain	Bond lengths		Bond angles	
		RMSZ	# Z >5	RMSZ	# Z >5
1	A	0.39	0/3462	0.63	1/4707 (0.0%)
1	B	0.39	0/3458	0.64	0/4702
All	All	0.39	0/6920	0.64	1/9409 (0.0%)

There are no bond length outliers.

All (1) bond angle outliers are listed below:

Mol	Chain	Res	Type	Atoms	Z	Observed(°)	Ideal(°)
1	A	365	GLY	N-CA-C	-5.05	100.48	113.10

There are no chirality outliers.

There are no planarity outliers.

5.2 Too-close contacts [i](#)

In the following table, the Non-H and H(model) columns list the number of non-hydrogen atoms and hydrogen atoms in the chain respectively. The H(added) column lists the number of hydrogen atoms added and optimized by MolProbity. The Clashes column lists the number of clashes within the asymmetric unit, whereas Symm-Clashes lists symmetry-related clashes.

Mol	Chain	Non-H	H(model)	H(added)	Clashes	Symm-Clashes
1	A	3364	0	3259	76	0
1	B	3360	0	3253	67	0
2	A	20	0	28	1	0
2	B	20	0	28	0	0
3	A	30	0	0	0	0
3	B	15	0	0	0	0
4	A	43	0	30	1	0
4	B	43	0	30	0	0

Continued on next page...

Continued from previous page...

Mol	Chain	Non-H	H(model)	H(added)	Clashes	Symm-Clashes
5	A	17	0	14	0	0
5	B	17	0	14	0	0
6	A	19	0	18	0	0
6	B	19	0	18	1	0
7	A	274	0	0	7	0
7	B	271	0	0	2	1
All	All	7512	0	6692	144	1

The all-atom clashscore is defined as the number of clashes found per 1000 atoms (including hydrogen atoms). The all-atom clashscore for this structure is 11.

All (144) close contacts within the same asymmetric unit are listed below, sorted by their clash magnitude.

Atom-1	Atom-2	Interatomic distance (Å)	Clash overlap (Å)
1:B:81:ILE:HD11	1:B:475:LEU:HD13	1.37	1.05
1:A:83:ASN:ND2	1:A:85:GLY:H	1.82	0.78
1:A:83:ASN:HD22	1:A:85:GLY:H	1.31	0.77
1:A:215:GLN:O	1:A:219:GLN:HG3	1.83	0.77
1:B:125:ASP:O	1:B:126:LYS:HD2	1.84	0.77
1:A:83:ASN:HD22	1:A:83:ASN:C	1.91	0.74
1:A:244:ARG:HA	7:A:2095:HOH:O	1.87	0.74
1:A:129:PRO:HB2	1:A:132:GLU:HG3	1.71	0.71
1:A:132:GLU:O	1:A:135:PRO:HD2	1.90	0.70
1:B:125:ASP:C	1:B:126:LYS:HD2	2.12	0.69
1:A:215:GLN:HE21	1:A:219:GLN:HE21	1.39	0.68
1:A:176:THR:OG1	1:A:179:GLU:HG3	1.95	0.66
1:B:188:TRP:CE3	1:B:200:TRP:HA	2.33	0.64
1:B:81:ILE:HD11	1:B:475:LEU:CD1	2.22	0.63
1:B:130:LEU:HD23	1:B:167:ILE:HG22	1.80	0.62
1:A:223:ARG:HD2	7:A:2156:HOH:O	1.99	0.62
1:A:133:LEU:HD22	1:A:167:ILE:HD13	1.81	0.62
1:A:81:ILE:HD11	1:A:475:LEU:HD13	1.80	0.62
1:A:215:GLN:HE21	1:A:219:GLN:NE2	1.98	0.61
1:B:332:TRP:CE3	1:B:392:ARG:HD2	2.35	0.61
4:A:901:HEM:HMC2	4:A:901:HEM:HBC2	1.82	0.61
1:A:124:ARG:HD2	7:A:2420:HOH:O	2.00	0.61
1:A:388:GLU:HG3	7:A:2359:HOH:O	1.99	0.60
1:A:241:PHE:HB3	1:A:242:PRO:CD	2.32	0.59
1:A:159:ARG:O	1:A:163:VAL:HG23	2.02	0.59
1:B:327:HIS:CG	1:B:328:PRO:HD2	2.38	0.58
1:A:138:ILE:HG22	1:A:142:ASN:HD21	1.67	0.58

Continued on next page...

Continued from previous page...

Atom-1	Atom-2	Interatomic distance (Å)	Clash overlap (Å)
1:B:78:TYR:C	1:B:78:TYR:CD1	2.78	0.57
1:B:209:ARG:O	1:B:242:PRO:HG3	2.05	0.56
1:A:241:PHE:HB3	1:A:242:PRO:HD2	1.88	0.56
1:B:98:ALA:O	1:B:99:THR:HG23	2.06	0.56
1:B:110:LEU:HD12	1:B:110:LEU:N	2.22	0.55
1:B:82:LYS:O	1:B:473:GLU:HG3	2.07	0.54
1:B:80:ARG:NH1	7:B:2523:HOH:O	2.40	0.54
1:B:110:LEU:HD12	1:B:110:LEU:H	1.71	0.54
1:A:304:GLN:HG3	1:A:308:GLN:O	2.08	0.54
1:B:332:TRP:O	1:B:335:GLU:HB2	2.07	0.54
1:A:188:TRP:CE3	1:A:200:TRP:HA	2.43	0.53
1:A:83:ASN:ND2	1:A:83:ASN:C	2.62	0.53
1:B:254:TRP:CZ3	1:B:490:TRP:HB3	2.43	0.52
1:A:134:LEU:O	1:A:138:ILE:HG12	2.10	0.52
1:A:163:VAL:O	1:A:167:ILE:HG13	2.09	0.52
1:A:465:SER:O	1:A:471:HIS:HE1	1.93	0.52
1:B:304:GLN:HG3	1:B:308:GLN:O	2.10	0.52
1:A:469:VAL:HG13	1:A:474:MET:CE	2.41	0.51
1:B:488:GLU:HB3	1:B:490:TRP:CE2	2.45	0.51
1:B:190:ASN:O	1:B:192:PRO:HD3	2.11	0.51
1:A:330:TYR:HB3	1:A:332:TRP:CE2	2.46	0.51
1:B:130:LEU:CD2	1:B:167:ILE:HG22	2.41	0.50
1:B:213:THR:OG1	1:B:216:GLU:HG3	2.11	0.50
1:B:374:VAL:O	1:B:378:CYS:HB2	2.11	0.50
1:B:243:GLN:HB3	1:B:358:PHE:CE2	2.47	0.50
1:A:209:ARG:O	1:A:242:PRO:HG3	2.11	0.50
1:A:94:LEU:HB3	1:A:450:GLY:HA3	1.93	0.50
1:A:303:LEU:O	1:A:310:PRO:HA	2.11	0.49
1:B:176:THR:OG1	1:B:179:GLU:HG3	2.12	0.49
1:A:153:ILE:O	1:A:157:LEU:HD23	2.11	0.49
1:B:445:TYR:CZ	1:B:450:GLY:HA2	2.46	0.49
1:A:344:PRO:HG2	1:A:344:PRO:O	2.12	0.49
1:A:153:ILE:HG22	1:A:157:LEU:HD23	1.94	0.49
1:A:124:ARG:NH2	1:A:128:THR:OG1	2.46	0.48
1:A:138:ILE:O	1:A:142:ASN:ND2	2.46	0.48
1:B:109:CYS:O	1:B:111:GLY:N	2.43	0.48
1:B:241:PHE:HB3	1:B:242:PRO:CD	2.43	0.48
1:A:132:GLU:C	1:A:135:PRO:HD2	2.34	0.48
1:A:138:ILE:HG22	1:A:142:ASN:ND2	2.28	0.48
1:A:334:GLN:HG3	1:A:335:GLU:N	2.29	0.48
1:B:446:ARG:CZ	1:B:446:ARG:HB3	2.44	0.48

Continued on next page...

Continued from previous page...

Atom-1	Atom-2	Interatomic distance (Å)	Clash overlap (Å)
1:B:163:VAL:O	1:B:167:ILE:HG13	2.14	0.47
1:A:246:ASP:OD2	1:A:248:LYS:HB2	2.14	0.47
1:A:374:VAL:O	1:A:378:CYS:HB2	2.14	0.47
1:B:262:ALA:HB2	1:B:299:LEU:CD2	2.44	0.47
1:A:262:ALA:HB2	1:A:299:LEU:CD2	2.45	0.47
1:B:134:LEU:HB3	1:B:135:PRO:HD3	1.97	0.47
1:A:379:ASP:HB3	1:A:381:GLN:NE2	2.29	0.47
1:B:77:GLN:O	1:B:96:HIS:HE1	1.98	0.47
1:B:110:LEU:H	1:B:110:LEU:CD1	2.28	0.47
1:B:241:PHE:HB3	1:B:242:PRO:HD2	1.95	0.47
1:B:445:TYR:HA	1:B:450:GLY:H	1.79	0.47
1:B:100:SER:HA	1:B:478:VAL:HG11	1.97	0.46
1:A:243:GLN:HB3	1:A:358:PHE:CE2	2.50	0.46
1:A:214:ALA:O	1:A:217:MET:HB2	2.16	0.46
1:A:469:VAL:HG13	1:A:474:MET:HE3	1.97	0.46
1:A:487:ILE:O	1:A:488:GLU:C	2.54	0.46
1:B:127:PRO:HG3	1:B:246:ASP:HA	1.98	0.46
1:B:348:ASN:ND2	1:B:348:ASN:H	2.14	0.46
1:B:244:ARG:NH1	1:B:357:GLU:OE2	2.48	0.46
1:A:133:LEU:HD23	1:A:133:LEU:C	2.36	0.45
1:A:439:LYS:O	1:A:442:GLN:HB3	2.16	0.45
1:A:407:ARG:HD2	7:A:2117:HOH:O	2.15	0.45
1:B:193:ARG:NH1	1:B:485:TYR:OH	2.49	0.45
1:A:193:ARG:HD3	1:A:457:TRP:CD2	2.51	0.45
1:A:453:ALA:HB3	1:A:474:MET:HB3	1.99	0.45
1:A:172:THR:HG23	1:A:173:TYR:N	2.31	0.45
1:A:239:THR:O	1:A:361:CYS:HA	2.17	0.45
1:A:136:HIS:O	1:A:139:GLU:HB3	2.17	0.44
1:A:160:LEU:HD13	2:A:4001:BOG:H5'1	2.00	0.44
1:B:445:TYR:CE2	1:B:450:GLY:HA2	2.53	0.44
1:A:82:LYS:O	1:A:473:GLU:HG3	2.18	0.44
1:A:78:TYR:CD1	1:A:78:TYR:C	2.91	0.44
1:A:238:ILE:HG13	1:A:363:PHE:HB3	1.99	0.44
1:B:130:LEU:HD13	1:B:130:LEU:C	2.38	0.43
1:A:327:HIS:CG	1:A:328:PRO:HD2	2.53	0.43
1:B:138:ILE:O	1:B:142:ASN:ND2	2.51	0.43
1:A:174:GLN:HA	7:A:2052:HOH:O	2.18	0.43
1:B:348:ASN:H	1:B:348:ASN:HD22	1.65	0.43
1:A:79:VAL:HG23	1:A:95:HIS:CE1	2.53	0.43
1:B:215:GLN:NE2	7:B:2540:HOH:O	2.51	0.43
1:B:480:SER:HA	1:B:481:PRO:C	2.40	0.43

Continued on next page...

Continued from previous page...

Atom-1	Atom-2	Interatomic distance (Å)	Clash overlap (Å)
1:A:125:ASP:O	1:A:248:LYS:HE3	2.19	0.42
1:A:407:ARG:HG2	7:A:2149:HOH:O	2.18	0.42
1:A:215:GLN:NE2	1:A:219:GLN:HE21	2.14	0.42
1:B:257:GLN:HG2	6:B:1906:A11:O16	2.19	0.42
1:B:316:PRO:O	1:B:319:LEU:HB2	2.19	0.42
1:B:348:ASN:HD22	1:B:348:ASN:N	2.18	0.42
1:A:332:TRP:O	1:A:335:GLU:HB2	2.19	0.42
1:A:350:LEU:C	1:A:350:LEU:HD23	2.40	0.42
1:B:132:GLU:O	1:B:135:PRO:HD2	2.19	0.42
1:B:305:ALA:O	1:B:308:GLN:HG2	2.19	0.42
1:B:433:ALA:O	1:B:436:SER:HB3	2.19	0.42
1:B:257:GLN:HA	1:B:345:ALA:O	2.20	0.42
1:B:159:ARG:O	1:B:163:VAL:HG23	2.20	0.42
1:A:433:ALA:O	1:A:436:SER:HB3	2.19	0.42
1:B:271:ILE:HD12	1:B:278:LEU:HD11	2.02	0.42
1:A:171:GLY:O	1:A:172:THR:HB	2.20	0.41
1:B:188:TRP:CZ3	1:B:200:TRP:HA	2.54	0.41
1:A:251:PHE:O	1:A:360:ALA:HB2	2.20	0.41
1:A:480:SER:HA	1:A:481:PRO:C	2.41	0.41
1:B:78:TYR:CE1	1:B:91:HIS:ND1	2.88	0.41
1:A:393:MET:CE	1:A:411:GLU:HG3	2.50	0.41
1:A:81:ILE:HD13	1:A:81:ILE:HA	1.78	0.41
1:B:164:THR:O	1:B:168:GLU:HG3	2.21	0.41
1:B:303:LEU:O	1:B:310:PRO:HA	2.20	0.41
1:A:190:ASN:O	1:A:192:PRO:HD3	2.21	0.41
1:A:217:MET:HB3	1:A:303:LEU:HD13	2.03	0.41
1:B:161:GLU:HG2	1:B:165:LYS:HE3	2.03	0.41
1:B:343:LEU:HD11	1:B:364:ASN:ND2	2.35	0.41
1:B:89:ILE:HG22	1:B:90:LEU:N	2.36	0.41
1:B:131:GLU:HG3	1:B:132:GLU:N	2.36	0.41
1:B:316:PRO:HA	1:B:317:PRO:HD3	1.88	0.41
1:B:330:TYR:HB3	1:B:332:TRP:CE2	2.56	0.41
1:A:152:LYS:HD2	1:A:155:GLU:OE2	2.21	0.40
1:A:254:TRP:CZ3	1:A:490:TRP:HB3	2.56	0.40
1:B:465:SER:HA	1:B:470:PHE:CG	2.57	0.40

All (1) symmetry-related close contacts are listed below. The label for Atom-2 includes the symmetry operator and encoded unit-cell translations to be applied.

Atom-1	Atom-2	Interatomic distance (Å)	Clash overlap (Å)
7:B:2227:HOH:O	7:B:2259:HOH:O[9_766]	2.13	0.07

5.3 Torsion angles [i](#)

5.3.1 Protein backbone [i](#)

In the following table, the Percentiles column shows the percent Ramachandran outliers of the chain as a percentile score with respect to all X-ray entries followed by that with respect to entries of similar resolution.

The Analysed column shows the number of residues for which the backbone conformation was analysed, and the total number of residues.

Mol	Chain	Analysed	Favoured	Allowed	Outliers	Percentiles	
1	A	409/433 (94%)	379 (93%)	28 (7%)	2 (0%)	29	35
1	B	409/433 (94%)	375 (92%)	30 (7%)	4 (1%)	15	17
All	All	818/866 (94%)	754 (92%)	58 (7%)	6 (1%)	22	26

All (6) Ramachandran outliers are listed below:

Mol	Chain	Res	Type
1	B	99	THR
1	B	110	LEU
1	B	111	GLY
1	A	172	THR
1	B	384	ASN
1	A	344	PRO

5.3.2 Protein sidechains [i](#)

In the following table, the Percentiles column shows the percent sidechain outliers of the chain as a percentile score with respect to all X-ray entries followed by that with respect to entries of similar resolution.

The Analysed column shows the number of residues for which the sidechain conformation was analysed, and the total number of residues.

Mol	Chain	Analysed	Rotameric	Outliers	Percentiles	
1	A	360/381 (94%)	357 (99%)	3 (1%)	81	91
1	B	359/381 (94%)	355 (99%)	4 (1%)	73	86
All	All	719/762 (94%)	712 (99%)	7 (1%)	76	87

All (7) residues with a non-rotameric sidechain are listed below:

Mol	Chain	Res	Type
1	A	83	ASN
1	A	118	SER
1	A	223	ARG
1	B	223	ARG
1	B	334	GLN
1	B	348	ASN
1	B	475	LEU

Sometimes sidechains can be flipped to improve hydrogen bonding and reduce clashes. All (13) such sidechains are listed below:

Mol	Chain	Res	Type
1	A	83	ASN
1	A	96	HIS
1	A	142	ASN
1	A	219	GLN
1	A	308	GLN
1	A	421	GLN
1	A	442	GLN
1	A	471	HIS
1	B	96	HIS
1	B	215	GLN
1	B	334	GLN
1	B	348	ASN
1	B	421	GLN

5.3.3 RNA [i](#)

There are no RNA molecules in this entry.

5.4 Non-standard residues in protein, DNA, RNA chains [i](#)

There are no non-standard protein/DNA/RNA residues in this entry.

5.5 Carbohydrates [i](#)

There are no monosaccharides in this entry.

5.6 Ligand geometry [i](#)

17 ligands are modelled in this entry.

In the following table, the Counts columns list the number of bonds (or angles) for which Mogul statistics could be retrieved, the number of bonds (or angles) that are observed in the model and the number of bonds (or angles) that are defined in the Chemical Component Dictionary. The Link column lists molecule types, if any, to which the group is linked. The Z score for a bond length (or angle) is the number of standard deviations the observed value is removed from the expected value. A bond length (or angle) with $|Z| > 2$ is considered an outlier worth inspection. RMSZ is the root-mean-square of all Z scores of the bond lengths (or angles).

Mol	Type	Chain	Res	Link	Bond lengths			Bond angles		
					Counts	RMSZ	# Z > 2	Counts	RMSZ	# Z > 2
5	H4B	A	902	-	16,18,18	1.81	3 (18%)	11,26,26	1.98	5 (45%)
6	A11	A	906	-	20,20,20	1.63	3 (15%)	24,26,26	1.49	6 (25%)
3	SO4	A	3007	-	4,4,4	0.35	0	6,6,6	0.07	0
5	H4B	B	1902	-	16,18,18	2.05	3 (18%)	11,26,26	1.98	5 (45%)
3	SO4	A	3001	-	4,4,4	0.30	0	6,6,6	0.07	0
3	SO4	B	3005	-	4,4,4	0.30	0	6,6,6	0.08	0
3	SO4	B	3009	-	4,4,4	0.32	0	6,6,6	0.07	0
3	SO4	A	3008	-	4,4,4	0.38	0	6,6,6	0.08	0
3	SO4	A	3003	-	4,4,4	0.29	0	6,6,6	0.07	0
4	HEM	B	1901	1	41,50,50	1.23	4 (9%)	45,82,82	1.54	7 (15%)
6	A11	B	1906	-	20,20,20	1.67	3 (15%)	24,26,26	1.43	5 (20%)
4	HEM	A	901	-	41,50,50	1.21	3 (7%)	45,82,82	1.54	7 (15%)
2	BOG	B	4002	-	20,20,20	1.49	3 (15%)	25,25,25	0.78	1 (4%)
3	SO4	A	3006	-	4,4,4	0.28	0	6,6,6	0.09	0
3	SO4	B	3004	-	4,4,4	0.36	0	6,6,6	0.07	0
3	SO4	A	3002	-	4,4,4	0.32	0	6,6,6	0.07	0
2	BOG	A	4001	-	20,20,20	1.53	4 (20%)	25,25,25	0.78	1 (4%)

In the following table, the Chirals column lists the number of chiral outliers, the number of chiral centers analysed, the number of these observed in the model and the number defined in the Chemical Component Dictionary. Similar counts are reported in the Torsion and Rings columns. '-' means no outliers of that kind were identified.

Mol	Type	Chain	Res	Link	Chirals	Torsions	Rings
5	H4B	A	902	-	1/1/3/5	3/8/17/17	0/2/2/2
6	A11	A	906	-	-	0/11/21/21	0/2/2/2
5	H4B	B	1902	-	1/1/3/5	4/8/17/17	0/2/2/2
6	A11	B	1906	-	-	0/11/21/21	0/2/2/2
4	HEM	B	1901	1	-	1/12/54/54	-
4	HEM	A	901	-	-	1/12/54/54	-
2	BOG	B	4002	-	-	2/11/31/31	0/1/1/1
2	BOG	A	4001	-	-	4/11/31/31	0/1/1/1

All (26) bond length outliers are listed below:

Mol	Chain	Res	Type	Atoms	Z	Observed(Å)	Ideal(Å)
5	B	1902	H4B	C7-C6	-6.58	1.45	1.52
5	A	902	H4B	C7-C6	-5.57	1.46	1.52
2	B	4002	BOG	C3-C2	-4.37	1.41	1.52
6	A	906	A11	O16-C15	4.21	1.27	1.21
6	B	1906	A11	O16-C15	4.10	1.27	1.21
2	A	4001	BOG	C3-C2	-4.04	1.42	1.52
5	B	1902	H4B	C7-N8	-3.83	1.38	1.44
6	A	906	A11	C6-N5	3.65	1.41	1.34
6	B	1906	A11	C6-N5	3.63	1.41	1.34
2	B	4002	BOG	C4-C3	-3.57	1.43	1.52
5	A	902	H4B	C7-N8	-3.55	1.38	1.44
2	A	4001	BOG	C4-C3	-3.16	1.44	1.52
6	B	1906	A11	C4-N5	3.10	1.41	1.34
6	A	906	A11	C4-N5	2.89	1.40	1.34
4	B	1901	HEM	C3C-CAC	-2.88	1.41	1.47
2	A	4001	BOG	O1-C1	2.83	1.45	1.40
4	A	901	HEM	CHB-C1B	2.56	1.41	1.35
4	B	1901	HEM	C3B-C4B	2.51	1.49	1.44
2	A	4001	BOG	O5-C1	2.47	1.48	1.41
4	A	901	HEM	CAB-C3B	-2.44	1.40	1.47
4	A	901	HEM	C3C-CAC	-2.41	1.42	1.47
5	A	902	H4B	C4A-N5	-2.41	1.33	1.38
5	B	1902	H4B	C4A-N5	-2.36	1.33	1.38
2	B	4002	BOG	O1-C1	2.18	1.43	1.40
4	B	1901	HEM	FE-ND	2.03	2.06	1.96
4	B	1901	HEM	CHA-C4D	2.01	1.40	1.35

All (37) bond angle outliers are listed below:

Mol	Chain	Res	Type	Atoms	Z	Observed(°)	Ideal(°)
4	B	1901	HEM	C4B-CHC-C1C	4.48	128.47	122.56
4	A	901	HEM	C4B-C3B-C2B	-4.10	103.86	107.11
4	A	901	HEM	C4C-CHD-C1D	3.85	127.64	122.56
4	A	901	HEM	C4B-CHC-C1C	3.71	127.45	122.56
6	A	906	A11	C3-C4-N5	-3.28	119.89	123.96
4	A	901	HEM	C3B-C2B-C1B	3.26	108.91	106.49
4	A	901	HEM	CMD-C2D-C1D	3.24	129.97	125.04
4	B	1901	HEM	C4C-CHD-C1D	3.23	126.83	122.56
5	A	902	H4B	C8A-C4A-C4	3.23	117.44	114.57
5	B	1902	H4B	C8A-C4A-C4	3.09	117.31	114.57
6	B	1906	A11	C3-C4-N5	-3.07	120.14	123.96
5	A	902	H4B	C2-N3-C4	3.01	120.72	115.93

Continued on next page...

Continued from previous page...

Mol	Chain	Res	Type	Atoms	Z	Observed(°)	Ideal(°)
5	B	1902	H4B	C2-N1-C8A	2.92	121.09	114.54
5	B	1902	H4B	C2-N3-C4	2.78	120.34	115.93
4	B	1901	HEM	CMD-C2D-C1D	2.72	129.18	125.04
6	A	906	A11	O16-C15-N12	-2.69	119.82	124.32
5	A	902	H4B	C2-N1-C8A	2.69	120.56	114.54
5	B	1902	H4B	C4-C4A-N5	2.65	121.35	119.12
4	B	1901	HEM	C2C-C3C-C4C	-2.65	105.05	106.90
6	B	1906	A11	O16-C15-N12	-2.59	119.98	124.32
6	A	906	A11	O17-C15-N12	2.48	114.71	111.66
5	A	902	H4B	C4-C4A-N5	2.42	121.16	119.12
6	B	1906	A11	C18-O17-C15	2.42	119.22	115.59
6	B	1906	A11	O17-C15-N12	2.34	114.53	111.66
5	A	902	H4B	N1-C2-N3	-2.29	121.82	125.42
4	B	1901	HEM	C4B-C3B-C2B	-2.28	105.31	107.11
6	A	906	A11	C18-O17-C15	2.28	119.01	115.59
4	A	901	HEM	C2C-C3C-C4C	-2.24	105.34	106.90
5	B	1902	H4B	N1-C2-N3	-2.23	121.92	125.42
4	A	901	HEM	CMC-C2C-C3C	2.22	128.82	124.68
6	B	1906	A11	C7-C6-N5	-2.15	119.75	122.75
2	A	4001	BOG	C4-C3-C2	2.12	114.52	110.82
4	B	1901	HEM	CHC-C4B-C3B	2.07	127.73	124.57
4	B	1901	HEM	C4A-C3A-C2A	2.06	108.43	107.00
6	A	906	A11	C7-C6-N5	-2.04	119.90	122.75
6	A	906	A11	C4-N5-C6	2.04	120.11	117.22
2	B	4002	BOG	C4-C3-C2	2.03	114.36	110.82

All (2) chirality outliers are listed below:

Mol	Chain	Res	Type	Atom
5	A	902	H4B	C6
5	B	1902	H4B	C6

All (15) torsion outliers are listed below:

Mol	Chain	Res	Type	Atoms
4	A	901	HEM	C1A-C2A-CAA-CBA
5	A	902	H4B	C7-C6-C9-O9
5	A	902	H4B	C7-C6-C9-C10
5	B	1902	H4B	N5-C6-C9-O9
5	B	1902	H4B	C7-C6-C9-O9
5	B	1902	H4B	C7-C6-C9-C10
2	A	4001	BOG	C4-C5-C6-O6

Continued on next page...

Continued from previous page...

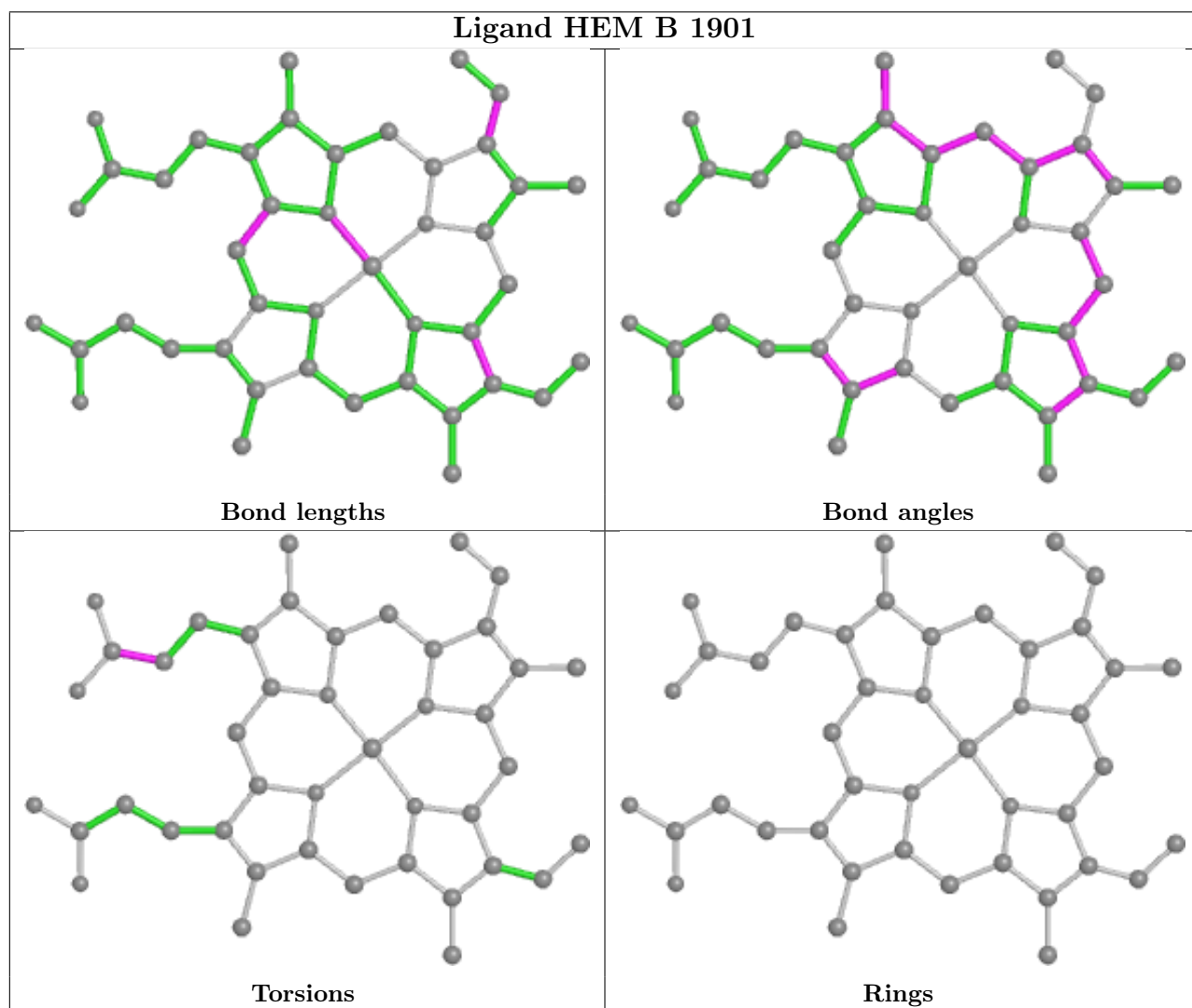
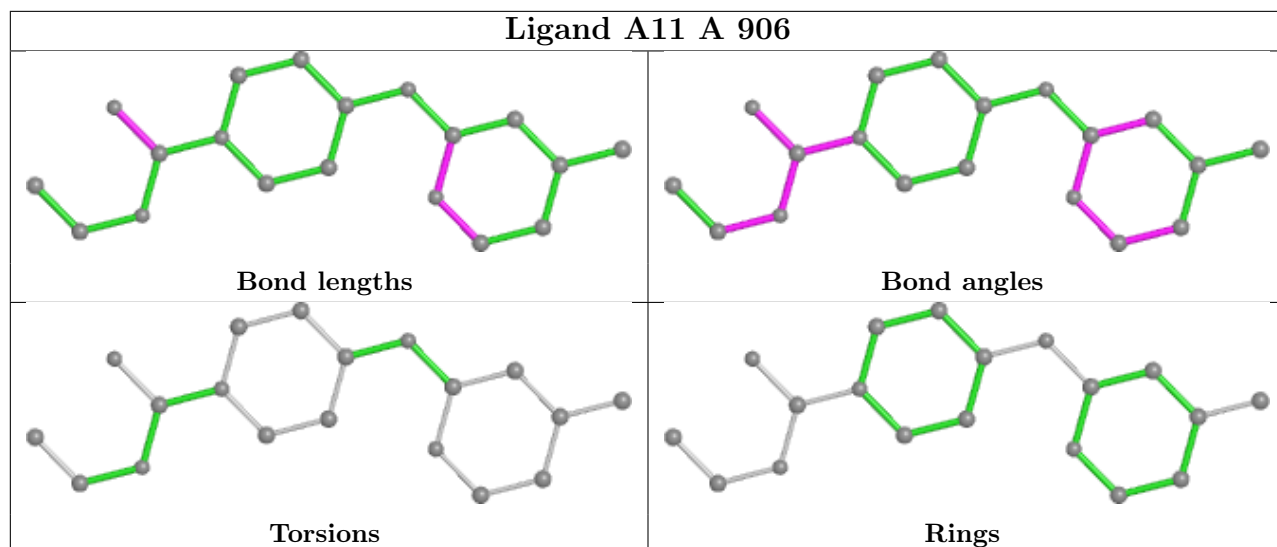
Mol	Chain	Res	Type	Atoms
2	A	4001	BOG	O5-C5-C6-O6
2	A	4001	BOG	O1-C1'-C2'-C3'
2	B	4002	BOG	C2-C1-O1-C1'
2	A	4001	BOG	C3'-C4'-C5'-C6'
2	B	4002	BOG	O5-C1-O1-C1'
5	A	902	H4B	N5-C6-C9-O9
5	B	1902	H4B	N5-C6-C9-C10
4	B	1901	HEM	CAD-CBD-CGD-O2D

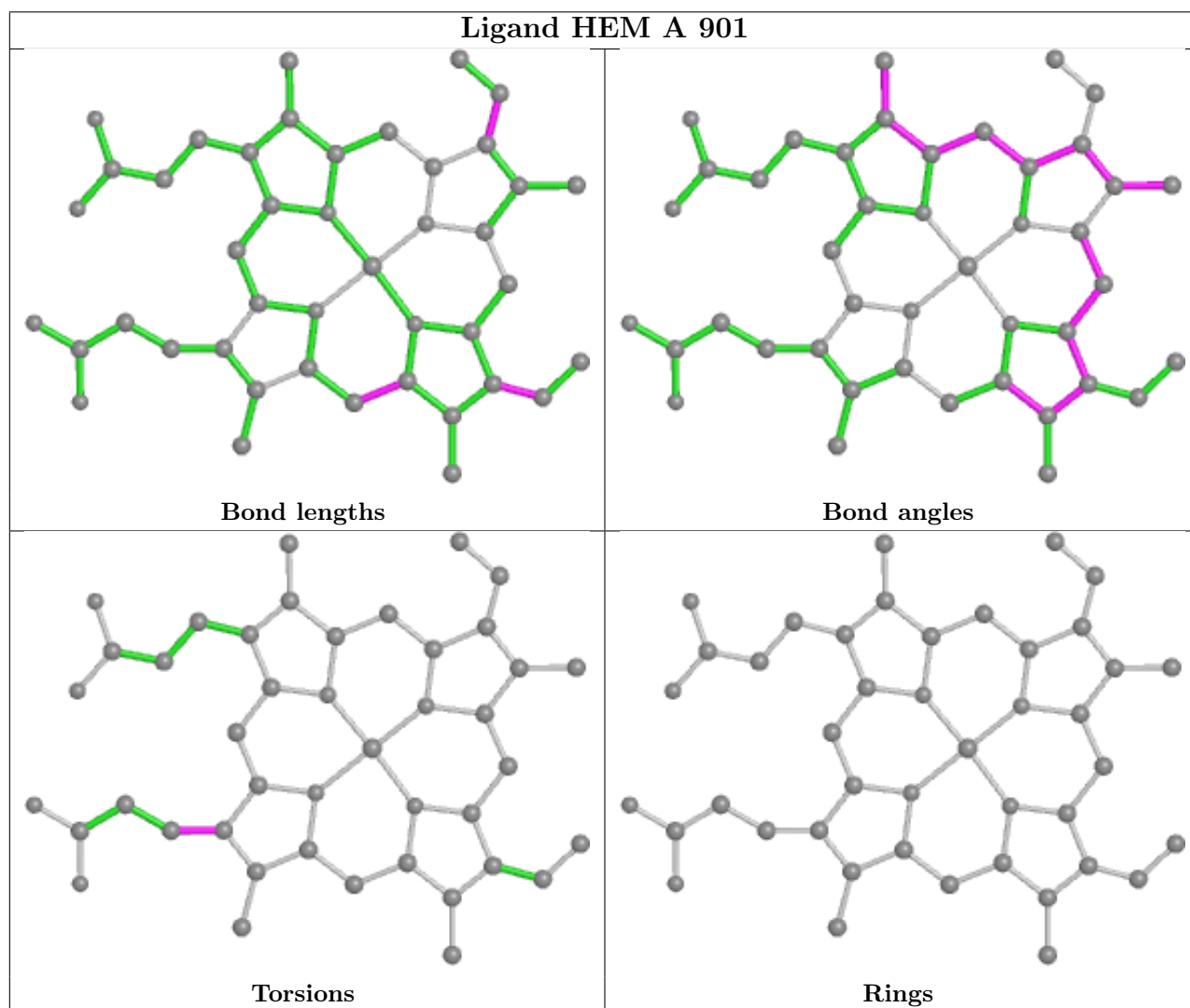
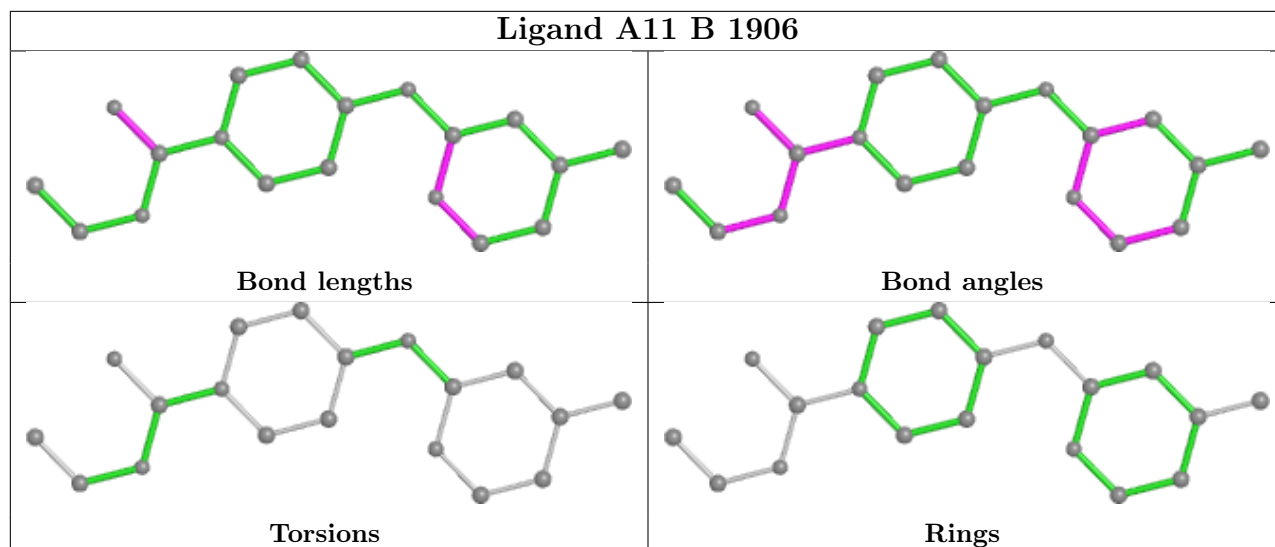
There are no ring outliers.

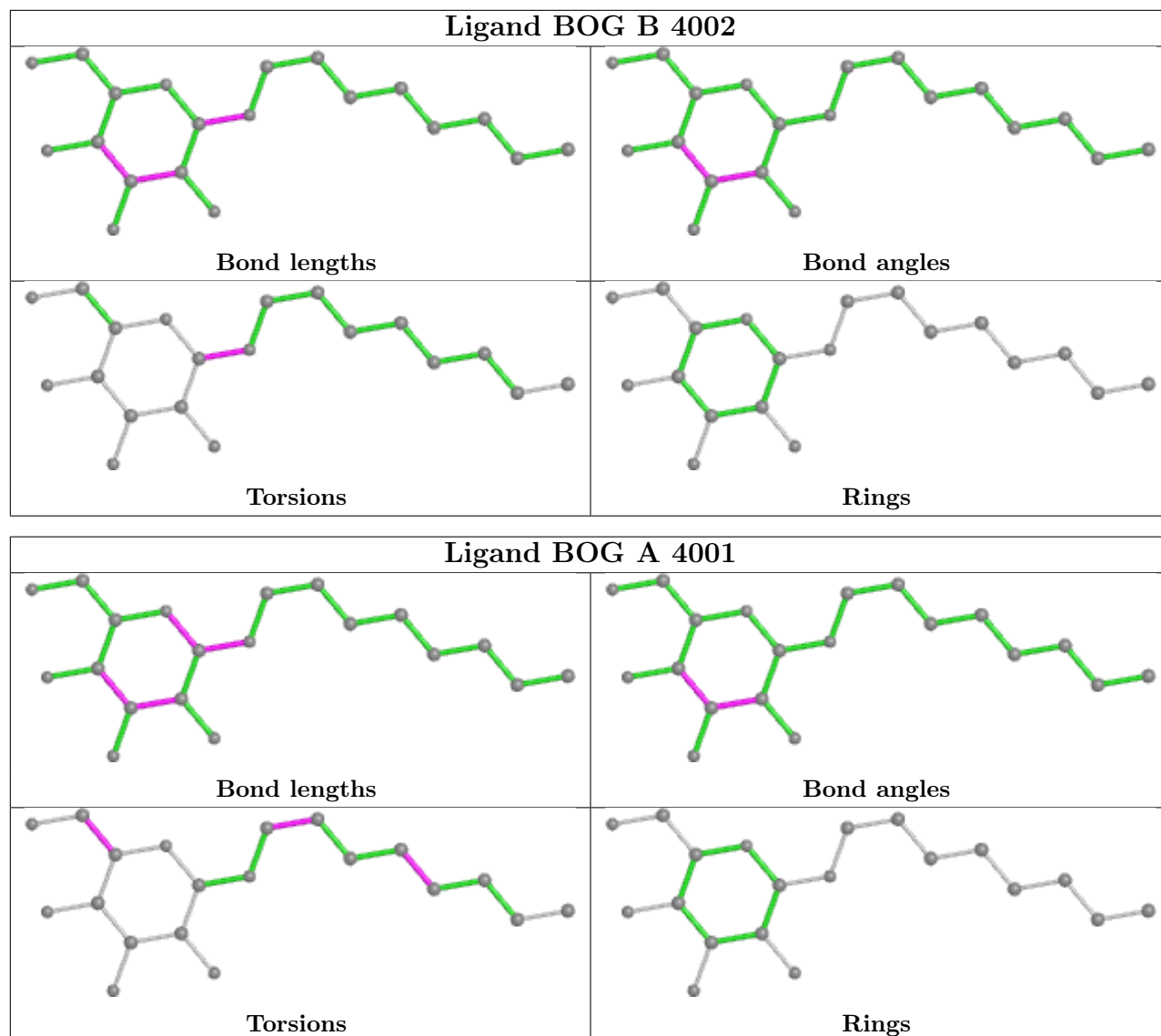
3 monomers are involved in 3 short contacts:

Mol	Chain	Res	Type	Clashes	Symm-Clashes
6	B	1906	A11	1	0
4	A	901	HEM	1	0
2	A	4001	BOG	1	0

The following is a two-dimensional graphical depiction of Mogul quality analysis of bond lengths, bond angles, torsion angles, and ring geometry for all instances of the Ligand of Interest. In addition, ligands with molecular weight > 250 and outliers as shown on the validation Tables will also be included. For torsion angles, if less than 5% of the Mogul distribution of torsion angles is within 10 degrees of the torsion angle in question, then that torsion angle is considered an outlier. Any bond that is central to one or more torsion angles identified as an outlier by Mogul will be highlighted in the graph. For rings, the root-mean-square deviation (RMSD) between the ring in question and similar rings identified by Mogul is calculated over all ring torsion angles. If the average RMSD is greater than 60 degrees and the minimal RMSD between the ring in question and any Mogul-identified rings is also greater than 60 degrees, then that ring is considered an outlier. The outliers are highlighted in purple. The color gray indicates Mogul did not find sufficient equivalents in the CSD to analyse the geometry.







5.7 Other polymers [i](#)

There are no such residues in this entry.

5.8 Polymer linkage issues [i](#)

There are no chain breaks in this entry.

6 Fit of model and data

6.1 Protein, DNA and RNA chains

In the following table, the column labelled ‘#RSRZ > 2’ contains the number (and percentage) of RSRZ outliers, followed by percent RSRZ outliers for the chain as percentile scores relative to all X-ray entries and entries of similar resolution. The OWAB column contains the minimum, median, 95th percentile and maximum values of the occupancy-weighted average B-factor per residue. The column labelled ‘Q < 0.9’ lists the number of (and percentage) of residues with an average occupancy less than 0.9.

Mol	Chain	Analysed	<RSRZ>	#RSRZ>2	OWAB(Å ²)	Q<0.9
1	A	413/433 (95%)	-0.01	13 (3%) 49 56	28, 44, 70, 95	0
1	B	413/433 (95%)	-0.05	11 (2%) 54 62	26, 42, 67, 98	0
All	All	826/866 (95%)	-0.03	24 (2%) 51 58	26, 43, 69, 98	0

All (24) RSRZ outliers are listed below:

Mol	Chain	Res	Type	RSRZ
1	B	108	SER	6.9
1	A	110	LEU	5.5
1	A	494	ILE	4.2
1	B	100	SER	4.2
1	B	109	CYS	4.1
1	A	495	TRP	3.7
1	B	110	LEU	3.4
1	A	109	CYS	3.3
1	B	495	TRP	3.3
1	A	108	SER	3.1
1	A	100	SER	3.1
1	A	149	LYS	3.0
1	A	496	GLN	3.0
1	A	157	LEU	3.0
1	B	494	ILE	2.8
1	B	78	TYR	2.8
1	A	88	GLU	2.5
1	B	446	ARG	2.5
1	A	78	TYR	2.5
1	A	111	GLY	2.5
1	A	89	ILE	2.3
1	B	91	HIS	2.1
1	B	111	GLY	2.1
1	B	152	LYS	2.0

6.2 Non-standard residues in protein, DNA, RNA chains [i](#)

There are no non-standard protein/DNA/RNA residues in this entry.

6.3 Carbohydrates [i](#)

There are no monosaccharides in this entry.

6.4 Ligands [i](#)

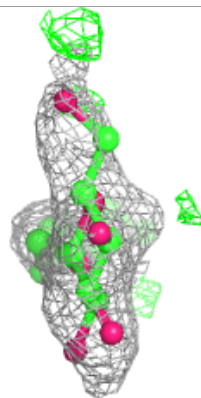
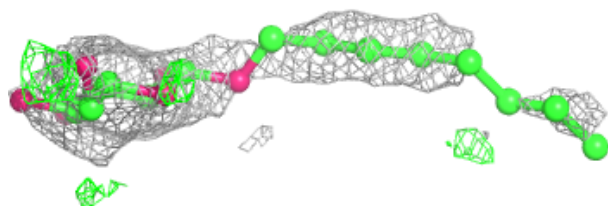
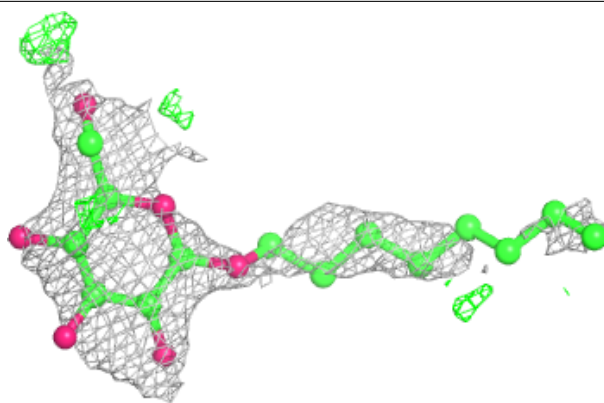
In the following table, the Atoms column lists the number of modelled atoms in the group and the number defined in the chemical component dictionary. The B-factors column lists the minimum, median, 95th percentile and maximum values of B factors of atoms in the group. The column labelled 'Q< 0.9' lists the number of atoms with occupancy less than 0.9.

Mol	Type	Chain	Res	Atoms	RSCC	RSR	B-factors(Å ²)	Q<0.9
3	SO4	A	3008	5/5	0.71	0.29	123,123,124,124	0
2	BOG	A	4001	20/20	0.77	0.47	84,95,97,98	0
3	SO4	A	3006	5/5	0.81	0.35	104,104,105,106	0
3	SO4	B	3009	5/5	0.83	0.24	118,119,119,120	0
3	SO4	A	3002	5/5	0.86	0.27	112,112,113,113	0
2	BOG	B	4002	20/20	0.86	0.31	83,87,88,89	0
3	SO4	A	3007	5/5	0.88	0.20	115,115,116,116	0
3	SO4	B	3004	5/5	0.89	0.20	117,118,118,118	0
3	SO4	A	3001	5/5	0.90	0.18	102,103,103,103	0
3	SO4	B	3005	5/5	0.92	0.17	97,97,98,99	0
3	SO4	A	3003	5/5	0.95	0.13	99,99,99,100	0
5	H4B	B	1902	17/17	0.96	0.17	30,32,38,40	0
5	H4B	A	902	17/17	0.97	0.12	31,32,37,37	0
6	A11	A	906	19/19	0.97	0.15	26,28,34,35	0
6	A11	B	1906	19/19	0.97	0.15	27,29,31,37	0
4	HEM	A	901	43/43	0.99	0.14	24,27,30,34	0
4	HEM	B	1901	43/43	0.99	0.15	22,27,29,29	0

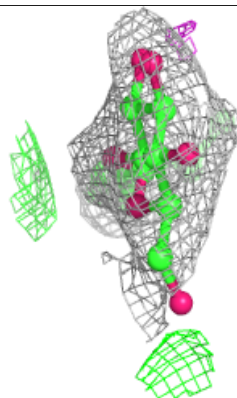
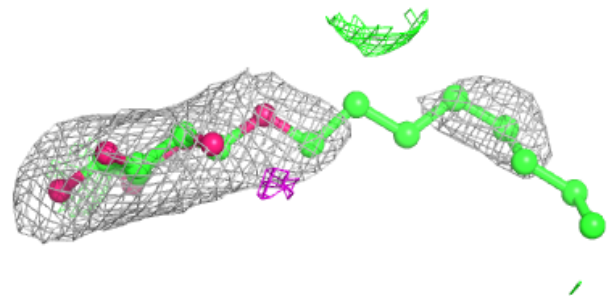
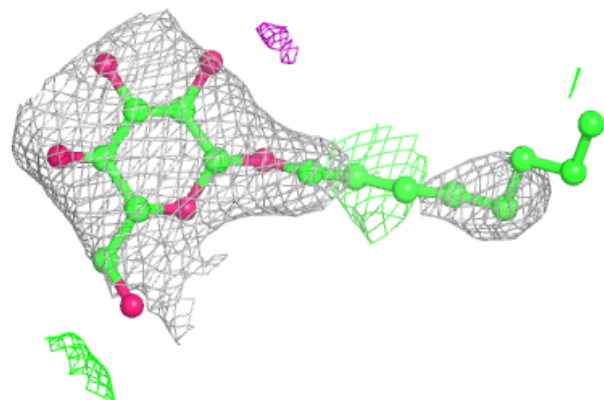
The following is a graphical depiction of the model fit to experimental electron density of all instances of the Ligand of Interest. In addition, ligands with molecular weight > 250 and outliers as shown on the geometry validation Tables will also be included. Each fit is shown from different orientation to approximate a three-dimensional view.

Electron density around BOG A 4001:

$2mF_o-DF_c$ (at 0.7 rmsd) in gray
 mF_o-DF_c (at 3 rmsd) in purple (negative)
and green (positive)

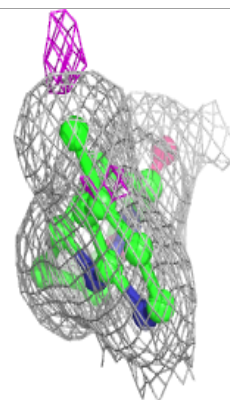
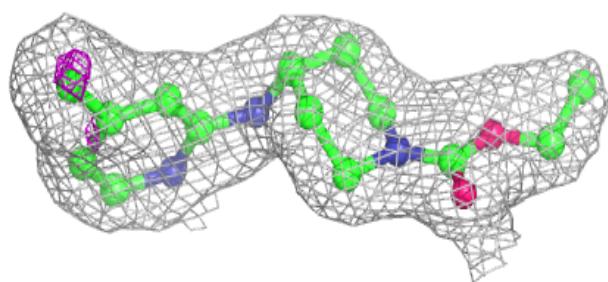
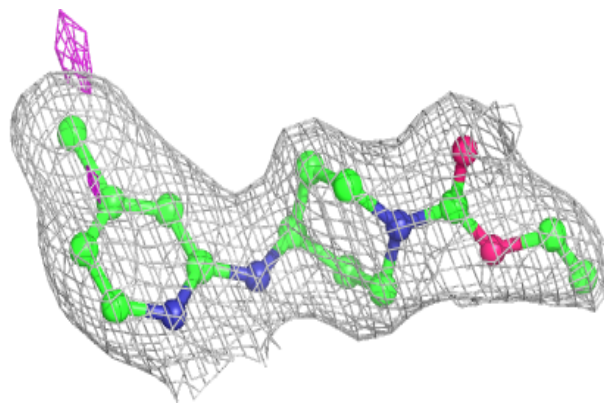
**Electron density around BOG B 4002:**

$2mF_o-DF_c$ (at 0.7 rmsd) in gray
 mF_o-DF_c (at 3 rmsd) in purple (negative)
and green (positive)

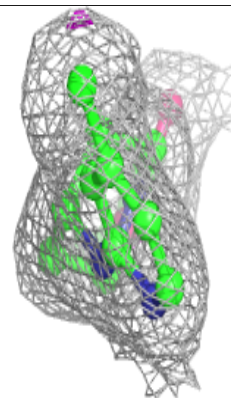
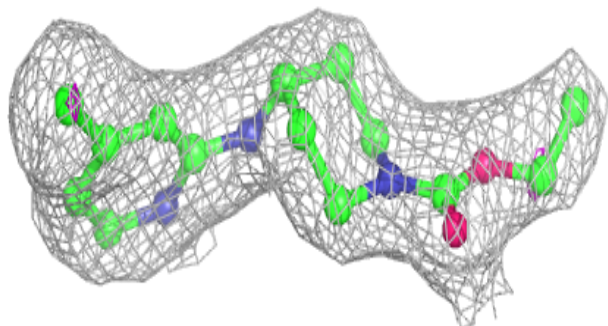
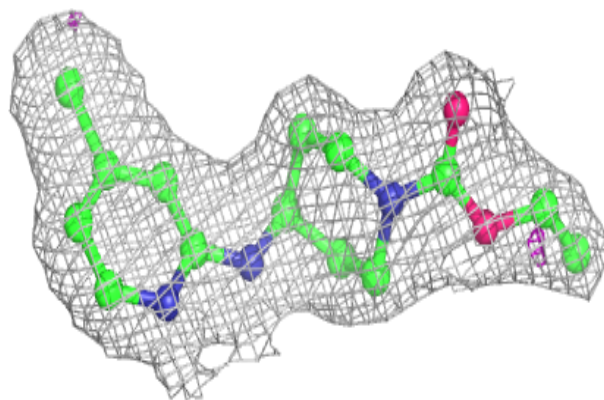


Electron density around A11 A 906:

$2mF_o-DF_c$ (at 0.7 rmsd) in gray
 mF_o-DF_c (at 3 rmsd) in purple (negative)
and green (positive)

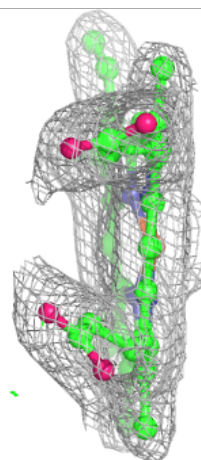
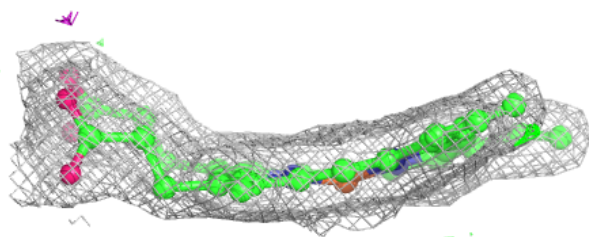
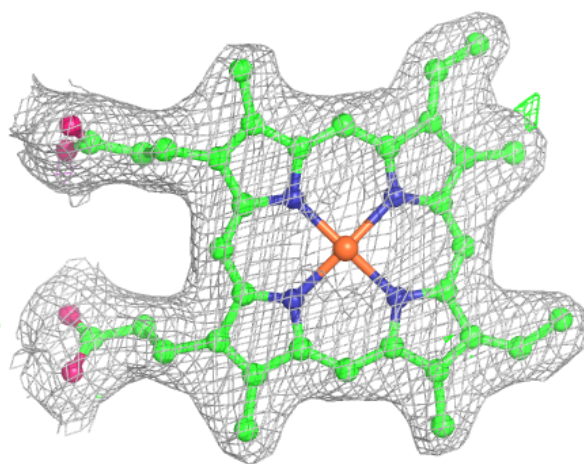
**Electron density around A11 B 1906:**

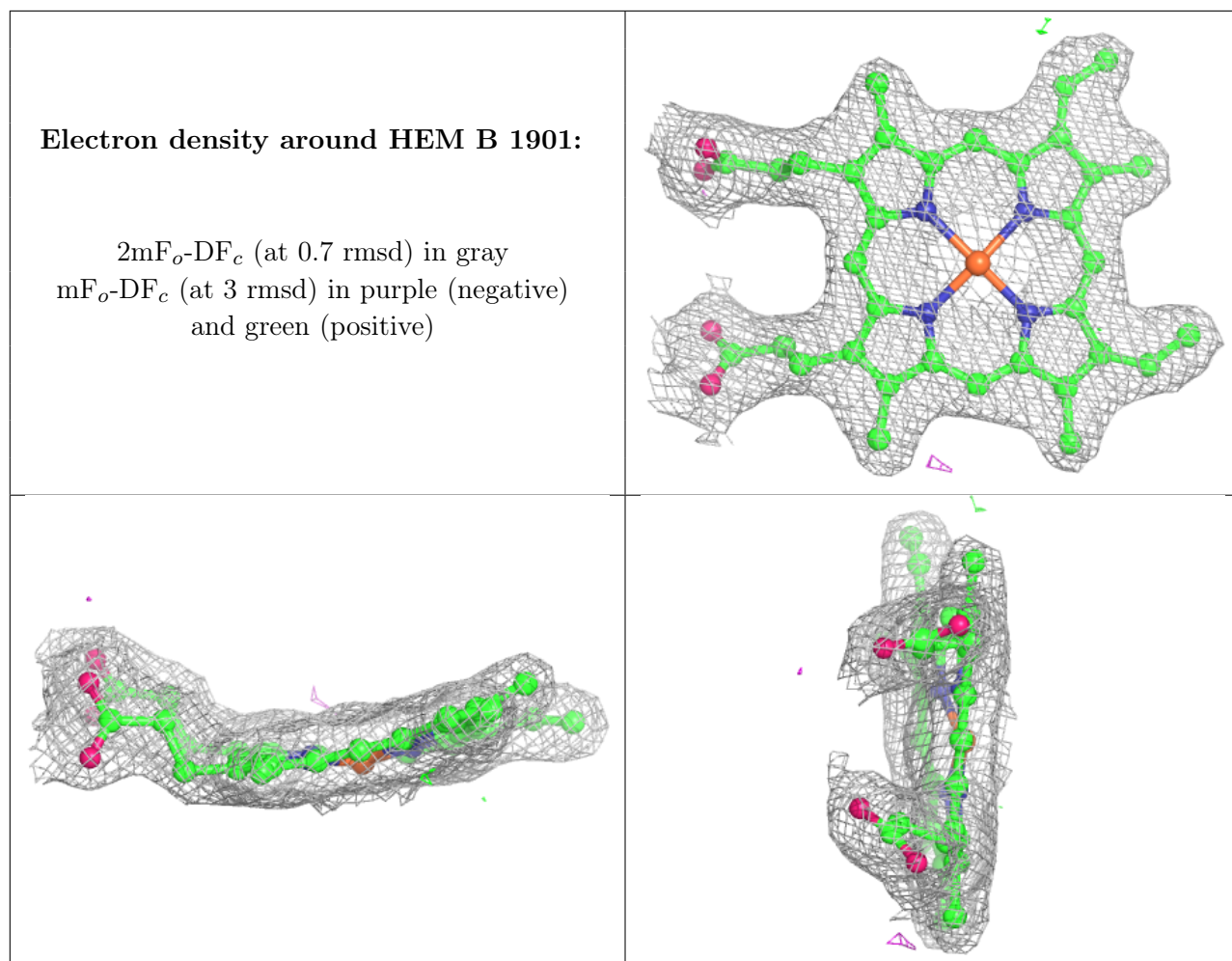
$2mF_o-DF_c$ (at 0.7 rmsd) in gray
 mF_o-DF_c (at 3 rmsd) in purple (negative)
and green (positive)



Electron density around HEM A 901:

$2mF_o-DF_c$ (at 0.7 rmsd) in gray
 mF_o-DF_c (at 3 rmsd) in purple (negative)
and green (positive)





6.5 Other polymers [i](#)

There are no such residues in this entry.