



wwPDB X-ray Structure Validation Summary Report ⓘ

Apr 20, 2024 – 01:17 pm BST

PDB ID : 5DYY
Title : Crystal structure of human butyrylcholinesterase in complex with N-((1-benzylpiperidin-3-yl)methyl)naphthalene-2-sulfonamide
Authors : Coquelle, N.; Brus, B.; Colletier, J.P.
Deposited on : 2015-09-25
Resolution : 2.65 Å(reported)

This is a wwPDB X-ray Structure Validation Summary Report for a publicly released PDB entry.

We welcome your comments at validation@mail.wwpdb.org

A user guide is available at

<https://www.wwpdb.org/validation/2017/XrayValidationReportHelp>

with specific help available everywhere you see the ⓘ symbol.

The types of validation reports are described at

<http://www.wwpdb.org/validation/2017/FAQs#types>.

The following versions of software and data (see [references ⓘ](#)) were used in the production of this report:

MolProbity : 4.02b-467
Mogul : 1.8.4, CSD as541be (2020)
Xtrriage (Phenix) : 1.13
EDS : 2.36.2
buster-report : 1.1.7 (2018)
Percentile statistics : 20191225.v01 (using entries in the PDB archive December 25th 2019)
Refmac : 5.8.0158
CCP4 : 7.0.044 (Gargrove)
Ideal geometry (proteins) : Engh & Huber (2001)
Ideal geometry (DNA, RNA) : Parkinson et al. (1996)
Validation Pipeline (wwPDB-VP) : 2.36.2

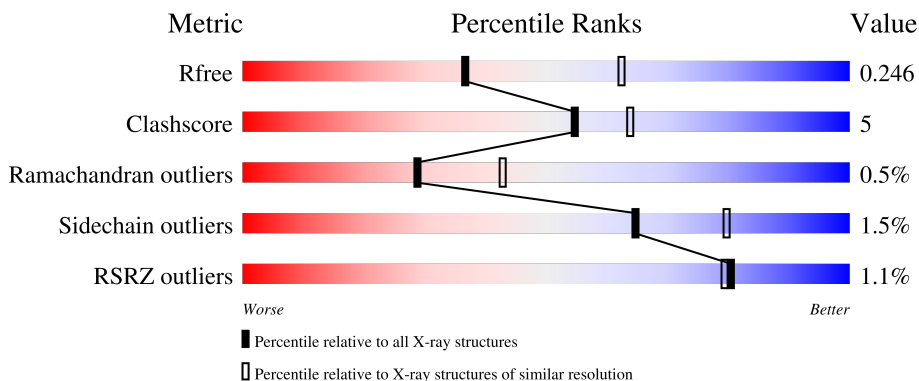
1 Overall quality at a glance

The following experimental techniques were used to determine the structure:

X-RAY DIFFRACTION

The reported resolution of this entry is 2.65 Å.

Percentile scores (ranging between 0-100) for global validation metrics of the entry are shown in the following graphic. The table shows the number of entries on which the scores are based.





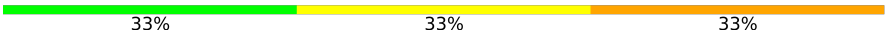
Metric	Whole archive (#Entries)	Similar resolution (#Entries, resolution range(Å))
R_{free}	130704	1332 (2.68-2.64)
Clashscore	141614	1374 (2.68-2.64)
Ramachandran outliers	138981	1349 (2.68-2.64)
Sidechain outliers	138945	1349 (2.68-2.64)
RSRZ outliers	127900	1318 (2.68-2.64)

The table below summarises the geometric issues observed across the polymeric chains and their fit to the electron density. The red, orange, yellow and green segments of the lower bar indicate the fraction of residues that contain outliers for ≥ 3 , 2, 1 and 0 types of geometric quality criteria respectively. A grey segment represents the fraction of residues that are not modelled. The numeric value for each fraction is indicated below the corresponding segment, with a dot representing fractions $\leq 5\%$. The upper red bar (where present) indicates the fraction of residues that have poor fit to the electron density. The numeric value is given above the bar.

Mol	Chain	Length	Quality of chain
1	A	530	 84% 15%
1	B	530	 85% 14%
2	C	2	 50% 50%
3	D	2	 100%
3	F	2	 50% 50%

Continued on next page...

Continued from previous page...

Mol	Chain	Length	Quality of chain
4	E	2	 100%
5	G	3	 33% 67%
5	H	3	 33% 33% 33%

The following table lists non-polymeric compounds, carbohydrate monomers and non-standard residues in protein, DNA, RNA chains that are outliers for geometric or electron-density-fit criteria:

Mol	Type	Chain	Res	Chirality	Geometry	Clashes	Electron density
10	NAG	A	614	X	-	-	-
10	NAG	B	607	X	-	-	-
10	NAG	B	608	X	-	-	-
10	NAG	B	609	X	-	-	-
10	NAG	B	616	X	-	-	-
3	NAG	D	2	X	-	-	-
4	NAG	E	1	X	-	-	-
4	FUL	E	2	X	-	-	-
5	NAG	G	1	X	-	-	-
5	NAG	G	2	-	-	-	X

2 Entry composition [i](#)

There are 11 unique types of molecules in this entry. The entry contains 9015 atoms, of which 0 are hydrogens and 0 are deuteriums.

In the tables below, the ZeroOcc column contains the number of atoms modelled with zero occupancy, the AltConf column contains the number of residues with at least one atom in alternate conformation and the Trace column contains the number of residues modelled with at most 2 atoms.

- Molecule 1 is a protein called Cholinesterase.

Mol	Chain	Residues	Atoms					ZeroOcc	AltConf	Trace
			Total	C	N	O	S			
1	A	527	Total 4213	C 2718	N 710	O 770	S 15	3	3	0
1	B	525	Total 4163	C 2690	N 697	O 761	S 15	4	0	0

- Molecule 2 is an oligosaccharide called alpha-L-fucopyranose-(1-6)-2-acetamido-2-deoxy-beta-D-glucopyranose.



Mol	Chain	Residues	Atoms				ZeroOcc	AltConf	Trace
			Total	C	N	O			
2	C	2	Total 24	C 14	N 1	O 9	0	0	0

- Molecule 3 is an oligosaccharide called 2-acetamido-2-deoxy-beta-D-glucopyranose-(1-4)-2-acetamido-2-deoxy-beta-D-glucopyranose.



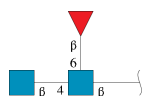
Mol	Chain	Residues	Atoms				ZeroOcc	AltConf	Trace
			Total	C	N	O			
3	D	2	Total 28	C 16	N 2	O 10	0	0	0
3	F	2	Total 28	C 16	N 2	O 10	0	0	0

- Molecule 4 is an oligosaccharide called beta-L-fucopyranose-(1-6)-2-acetamido-2-deoxy-beta-D-glucopyranose.



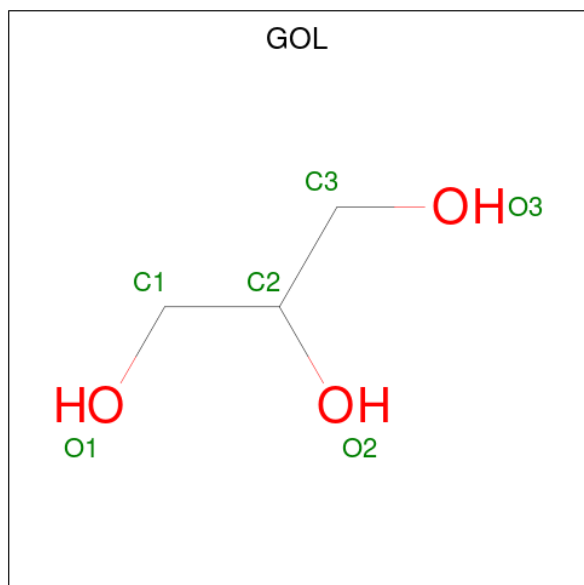
Mol	Chain	Residues	Atoms				ZeroOcc	AltConf	Trace
4	E	2	Total	C	N	O	0	0	0
			24	14	1	9			

- Molecule 5 is an oligosaccharide called 2-acetamido-2-deoxy-beta-D-glucopyranose-(1-4)-[beta-L-fucopyranose-(1-6)]2-acetamido-2-deoxy-beta-D-glucopyranose.



Mol	Chain	Residues	Atoms				ZeroOcc	AltConf	Trace
5	G	3	Total	C	N	O	0	0	0
			38	22	2	14			
5	H	3	Total	C	N	O	0	0	0
			38	22	2	14			

- Molecule 6 is GLYCEROL (three-letter code: GOL) (formula: C₃H₈O₃).



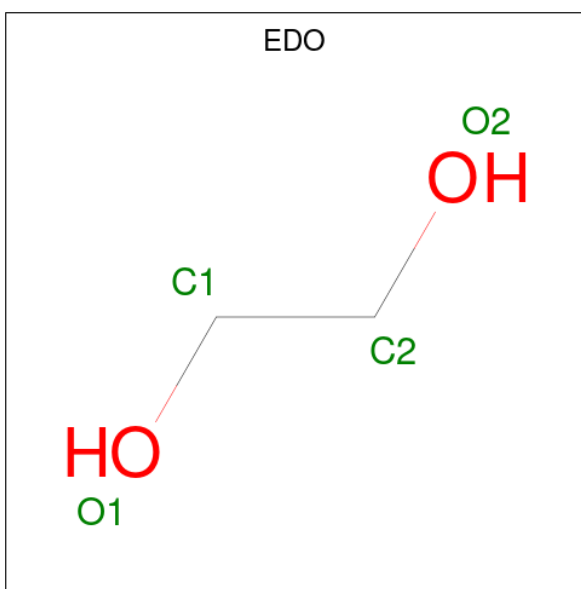
Mol	Chain	Residues	Atoms			ZeroOcc	AltConf
6	A	1	Total	C	O	0	0
			6	3	3		

Continued on next page...

Continued from previous page...

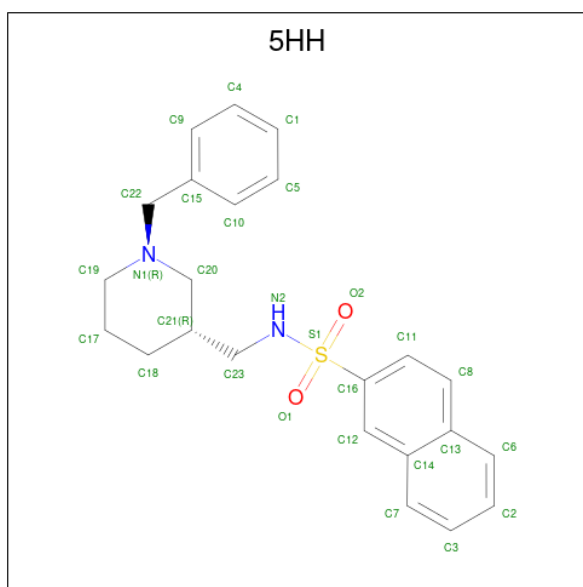
Mol	Chain	Residues	Atoms			ZeroOcc	AltConf
6	A	1	Total	C	O	0	0
			6	3	3		
6	A	1	Total	C	O	0	0
			6	3	3		
6	B	1	Total	C	O	0	0
			6	3	3		
6	B	1	Total	C	O	0	0
			6	3	3		

- Molecule 7 is 1,2-ETHANEDIOL (three-letter code: EDO) (formula: C₂H₆O₂).



Mol	Chain	Residues	Atoms			ZeroOcc	AltConf
7	A	1	Total	C	O	0	0
			4	2	2		
7	B	1	Total	C	O	0	0
			4	2	2		
7	B	1	Total	C	O	0	0
			4	2	2		

- Molecule 8 is N-{[(3R)-1-benzylpiperidin-3-yl]methyl}naphthalene-2-sulfonamide (three-letter code: 5HH) (formula: C₂₃H₂₆N₂O₂S).



Mol	Chain	Residues	Atoms					ZeroOcc	AltConf
8	A	1	Total	C	N	O	S	0	0
			28	23	2	2	1		
8	B	1	Total	C	N	O	S	0	0
			28	23	2	2	1		

- Molecule 9 is CHLORIDE ION (three-letter code: CL) (formula: Cl).

Mol	Chain	Residues	Atoms		ZeroOcc	AltConf
9	A	1	Total	Cl	0	0
			1	1		
9	B	1	Total	Cl	0	0
			1	1		

- Molecule 10 is 2-acetamido-2-deoxy-beta-D-glucopyranose (three-letter code: NAG) (formula: C₈H₁₅NO₆).



Mol	Chain	Residues	Atoms				ZeroOcc	AltConf
10	A	1	Total	C	N	O	0	0
			14	8	1	5		
10	A	1	Total	C	N	O	0	0
			14	8	1	5		
10	B	1	Total	C	N	O	0	0
			14	8	1	5		
10	B	1	Total	C	N	O	0	0
			14	8	1	5		
10	B	1	Total	C	N	O	0	0
			14	8	1	5		
10	B	1	Total	C	N	O	0	0
			14	8	1	5		
10	B	1	Total	C	N	O	0	0
			14	8	1	5		
10	B	1	Total	C	N	O	0	0
			14	8	1	5		

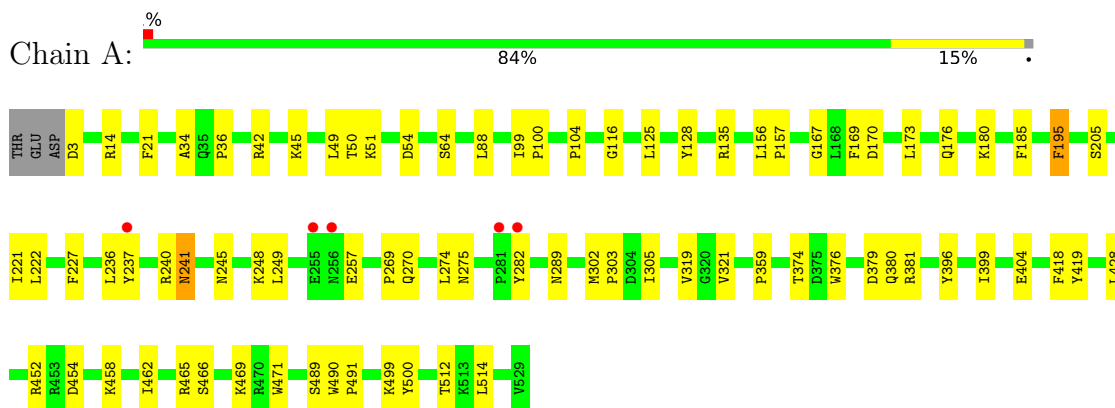
- Molecule 11 is water.

Mol	Chain	Residues	Atoms		ZeroOcc	AltConf
11	A	119	Total	O	0	0
			119	119		
11	B	114	Total	O	0	0
			114	114		

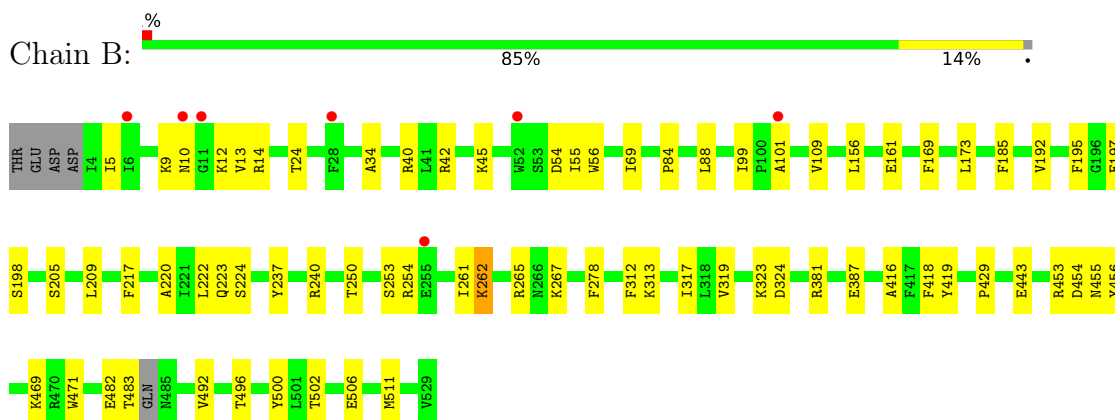
3 Residue-property plots [i](#)

These plots are drawn for all protein, RNA, DNA and oligosaccharide chains in the entry. The first graphic for a chain summarises the proportions of the various outlier classes displayed in the second graphic. The second graphic shows the sequence view annotated by issues in geometry and electron density. Residues are color-coded according to the number of geometric quality criteria for which they contain at least one outlier: green = 0, yellow = 1, orange = 2 and red = 3 or more. A red dot above a residue indicates a poor fit to the electron density ($RSRZ > 2$). Stretches of 2 or more consecutive residues without any outlier are shown as a green connector. Residues present in the sample, but not in the model, are shown in grey.

- Molecule 1: Cholinesterase



- Molecule 1: Cholinesterase



- Molecule 2: alpha-L-fucopyranose-(1-6)-2-acetamido-2-deoxy-beta-D-glucopyranose



- Molecule 3: 2-acetamido-2-deoxy-beta-D-glucopyranose-(1-4)-2-acetamido-2-deoxy-beta-D-glucopyranose



MAG1
MAG2

- Molecule 3: 2-acetamido-2-deoxy-beta-D-glucopyranose-(1-4)-2-acetamido-2-deoxy-beta-D-glucopyranose

Chain F:  50% 50%

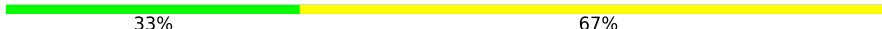
MAG1
MAG2

- Molecule 4: beta-L-fucopyranose-(1-6)-2-acetamido-2-deoxy-beta-D-glucopyranose

Chain E:  100%

MAG1
FUL2

- Molecule 5: 2-acetamido-2-deoxy-beta-D-glucopyranose-(1-4)-[beta-L-fucopyranose-(1-6)]2-acetamido-2-deoxy-beta-D-glucopyranose

Chain G:  33% 67%

MAG1
MAG2
FUL3

- Molecule 5: 2-acetamido-2-deoxy-beta-D-glucopyranose-(1-4)-[beta-L-fucopyranose-(1-6)]2-acetamido-2-deoxy-beta-D-glucopyranose

Chain H:  33% 33% 33%

MAG1
MAG2
FUL3

4 Data and refinement statistics

Property	Value	Source
Space group	P 21 21 21	Depositor
Cell constants a, b, c, α , β , γ	75.97Å 80.19Å 232.91Å 90.00° 90.00° 90.00°	Depositor
Resolution (Å)	46.21 – 2.65 46.21 – 2.65	Depositor EDS
% Data completeness (in resolution range)	99.7 (46.21-2.65) 99.8 (46.21-2.65)	Depositor EDS
R_{merge}	0.11	Depositor
R_{sym}	(Not available)	Depositor
$\langle I/\sigma(I) \rangle$ ¹	2.29 (at 2.65Å)	Xtrriage
Refinement program	PHENIX (1.10_2155: ???)	Depositor
R, R_{free}	0.187 , 0.244 0.187 , 0.246	Depositor DCC
R_{free} test set	1255 reflections (2.98%)	wwPDB-VP
Wilson B-factor (Å ²)	51.3	Xtrriage
Anisotropy	0.218	Xtrriage
Bulk solvent k_{sol} (e/Å ³), B_{sol} (Å ²)	0.30 , 40.8	EDS
L-test for twinning ²	$\langle L \rangle = 0.49$, $\langle L^2 \rangle = 0.33$	Xtrriage
Estimated twinning fraction	No twinning to report.	Xtrriage
F_o, F_c correlation	0.94	EDS
Total number of atoms	9015	wwPDB-VP
Average B, all atoms (Å ²)	48.0	wwPDB-VP

Xtrriage's analysis on translational NCS is as follows: *The largest off-origin peak in the Patterson function is 3.72% of the height of the origin peak. No significant pseudotranslation is detected.*

¹Intensities estimated from amplitudes.

²Theoretical values of $\langle |L| \rangle$, $\langle L^2 \rangle$ for acentric reflections are 0.5, 0.333 respectively for untwinned datasets, and 0.375, 0.2 for perfectly twinned datasets.

5 Model quality [i](#)

5.1 Standard geometry [i](#)

Bond lengths and bond angles in the following residue types are not validated in this section: CL, EDO, GOL, NAG, FUC, CSO, FUL, 5HH

The Z score for a bond length (or angle) is the number of standard deviations the observed value is removed from the expected value. A bond length (or angle) with $|Z| > 5$ is considered an outlier worth inspection. RMSZ is the root-mean-square of all Z scores of the bond lengths (or angles).

Mol	Chain	Bond lengths		Bond angles	
		RMSZ	# Z >5	RMSZ	# Z >5
1	A	0.45	1/4334 (0.0%)	0.60	1/5883 (0.0%)
1	B	0.47	0/4273	0.59	0/5801
All	All	0.46	1/8607 (0.0%)	0.60	1/11684 (0.0%)

All (1) bond length outliers are listed below:

Mol	Chain	Res	Type	Atoms	Z	Observed(Å)	Ideal(Å)
1	A	36	PRO	C-N	5.74	1.45	1.34

All (1) bond angle outliers are listed below:

Mol	Chain	Res	Type	Atoms	Z	Observed(°)	Ideal(°)
1	A	236	LEU	CA-CB-CG	5.12	127.06	115.30

There are no chirality outliers.

There are no planarity outliers.

5.2 Too-close contacts [i](#)

In the following table, the Non-H and H(model) columns list the number of non-hydrogen atoms and hydrogen atoms in the chain respectively. The H(added) column lists the number of hydrogen atoms added and optimized by MolProbity. The Clashes column lists the number of clashes within the asymmetric unit, whereas Symm-Clashes lists symmetry-related clashes.

Mol	Chain	Non-H	H(model)	H(added)	Clashes	Symm-Clashes
1	A	4213	0	4104	45	1
1	B	4163	0	4038	45	1
2	C	24	0	22	0	0
3	D	28	0	25	0	0

Continued on next page...

Continued from previous page...

Mol	Chain	Non-H	H(model)	H(added)	Clashes	Symm-Clashes
3	F	28	0	25	0	0
4	E	24	0	22	3	0
5	G	38	0	34	0	0
5	H	38	0	34	2	0
6	A	18	0	24	0	0
6	B	12	0	16	1	0
7	A	4	0	6	0	0
7	B	8	0	12	0	0
8	A	28	0	0	0	0
8	B	28	0	0	0	0
9	A	1	0	0	0	0
9	B	1	0	0	0	0
10	A	28	0	26	0	0
10	B	98	0	91	0	0
11	A	119	0	0	4	0
11	B	114	0	0	4	0
All	All	9015	0	8479	90	1

The all-atom clashscore is defined as the number of clashes found per 1000 atoms (including hydrogen atoms). The all-atom clashscore for this structure is 5.

The worst 5 of 90 close contacts within the same asymmetric unit are listed below, sorted by their clash magnitude.

Atom-1	Atom-2	Interatomic distance (Å)	Clash overlap (Å)
1:B:217:PHE:O	1:B:313:LYS:NZ	2.03	0.92
1:B:99:ILE:HD11	1:B:185:PHE:HB3	1.65	0.78
1:A:100:PRO:HG2	1:A:104:PRO:HG3	1.67	0.74
1:B:250:THR:HB	1:B:267:LYS:HE2	1.72	0.71
1:B:161:GLU:OE1	1:B:265:ARG:NH1	2.22	0.71

All (1) symmetry-related close contacts are listed below. The label for Atom-2 includes the symmetry operator and encoded unit-cell translations to be applied.

Atom-1	Atom-2	Interatomic distance (Å)	Clash overlap (Å)
1:A:237:TYR:OH	1:B:453:ARG:O[1_545]	2.00	0.20

5.3 Torsion angles [i](#)

5.3.1 Protein backbone [i](#)

In the following table, the Percentiles column shows the percent Ramachandran outliers of the chain as a percentile score with respect to all X-ray entries followed by that with respect to entries of similar resolution.

The Analysed column shows the number of residues for which the backbone conformation was analysed, and the total number of residues.

Mol	Chain	Analysed	Favoured	Allowed	Outliers	Percentiles	
1	A	527/530 (99%)	502 (95%)	23 (4%)	2 (0%)	34	48
1	B	520/530 (98%)	495 (95%)	22 (4%)	3 (1%)	25	37
All	All	1047/1060 (99%)	997 (95%)	45 (4%)	5 (0%)	29	43

All (5) Ramachandran outliers are listed below:

Mol	Chain	Res	Type
1	B	455	ASN
1	A	54	ASP
1	B	54	ASP
1	B	506	GLU
1	A	116	GLY

5.3.2 Protein sidechains [i](#)

In the following table, the Percentiles column shows the percent sidechain outliers of the chain as a percentile score with respect to all X-ray entries followed by that with respect to entries of similar resolution.

The Analysed column shows the number of residues for which the sidechain conformation was analysed, and the total number of residues.

Mol	Chain	Analysed	Rotameric	Outliers	Percentiles	
1	A	452/454 (100%)	446 (99%)	6 (1%)	69	82
1	B	443/454 (98%)	436 (98%)	7 (2%)	62	78
All	All	895/908 (99%)	882 (98%)	13 (2%)	65	80

5 of 13 residues with a non-rotameric sidechain are listed below:

Mol	Chain	Res	Type
1	B	195	PHE

Continued on next page...

Continued from previous page...

Mol	Chain	Res	Type
1	B	240	ARG
1	B	502	THR
1	B	471	TRP
1	B	496	THR

Sometimes sidechains can be flipped to improve hydrogen bonding and reduce clashes. All (2) such sidechains are listed below:

Mol	Chain	Res	Type
1	B	10	ASN
1	B	479	ASN

5.3.3 RNA [i](#)

There are no RNA molecules in this entry.

5.4 Non-standard residues in protein, DNA, RNA chains [i](#)

2 non-standard protein/DNA/RNA residues are modelled in this entry.

In the following table, the Counts columns list the number of bonds (or angles) for which Mogul statistics could be retrieved, the number of bonds (or angles) that are observed in the model and the number of bonds (or angles) that are defined in the Chemical Component Dictionary. The Link column lists molecule types, if any, to which the group is linked. The Z score for a bond length (or angle) is the number of standard deviations the observed value is removed from the expected value. A bond length (or angle) with $|Z| > 2$ is considered an outlier worth inspection. RMSZ is the root-mean-square of all Z scores of the bond lengths (or angles).

Mol	Type	Chain	Res	Link	Bond lengths			Bond angles		
					Counts	RMSZ	# Z > 2	Counts	RMSZ	# Z > 2
1	CSO	A	66	1	3,6,7	0.59	0	0,6,8	-	-
1	CSO	B	66	1	3,6,7	0.54	0	0,6,8	-	-

In the following table, the Chirals column lists the number of chiral outliers, the number of chiral centers analysed, the number of these observed in the model and the number defined in the Chemical Component Dictionary. Similar counts are reported in the Torsion and Rings columns. '-' means no outliers of that kind were identified.

Mol	Type	Chain	Res	Link	Chirals	Torsions	Rings
1	CSO	A	66	1	-	0/1/5/7	-
1	CSO	B	66	1	-	0/1/5/7	-

There are no bond length outliers.

There are no bond angle outliers.

There are no chirality outliers.

There are no torsion outliers.

There are no ring outliers.

No monomer is involved in short contacts.

5.5 Carbohydrates i

14 monosaccharides are modelled in this entry.

In the following table, the Counts columns list the number of bonds (or angles) for which Mogul statistics could be retrieved, the number of bonds (or angles) that are observed in the model and the number of bonds (or angles) that are defined in the Chemical Component Dictionary. The Link column lists molecule types, if any, to which the group is linked. The Z score for a bond length (or angle) is the number of standard deviations the observed value is removed from the expected value. A bond length (or angle) with $|Z| > 2$ is considered an outlier worth inspection. RMSZ is the root-mean-square of all Z scores of the bond lengths (or angles).

Mol	Type	Chain	Res	Link	Bond lengths			Bond angles		
					Counts	RMSZ	# $ Z > 2$	Counts	RMSZ	# $ Z > 2$
2	NAG	C	1	1,2	14,14,15	0.58	0	17,19,21	0.53	0
2	FUC	C	2	2	10,10,11	1.84	4 (40%)	14,14,16	1.04	2 (14%)
3	NAG	D	1	1,3	14,14,15	0.23	0	17,19,21	0.64	0
3	NAG	D	2	3	14,14,15	0.58	0	17,19,21	0.46	0
4	NAG	E	1	4,1	14,14,15	0.22	0	17,19,21	0.96	1 (5%)
4	FUL	E	2	4	10,10,11	1.75	2 (20%)	14,14,16	1.66	3 (21%)
3	NAG	F	1	1,3	14,14,15	0.28	0	17,19,21	0.51	0
3	NAG	F	2	3	14,14,15	1.03	1 (7%)	17,19,21	0.80	1 (5%)
5	NAG	G	1	1,5	14,14,15	1.19	2 (14%)	17,19,21	1.00	1 (5%)
5	NAG	G	2	5	14,14,15	0.27	0	17,19,21	0.39	0
5	FUL	G	3	5	10,10,11	1.80	3 (30%)	14,14,16	1.07	0
5	NAG	H	1	1,5	14,14,15	0.16	0	17,19,21	0.54	0
5	NAG	H	2	5	14,14,15	0.19	0	17,19,21	0.50	0
5	FUL	H	3	5	10,10,11	1.84	4 (40%)	14,14,16	1.98	4 (28%)

In the following table, the Chirals column lists the number of chiral outliers, the number of chiral centers analysed, the number of these observed in the model and the number defined in the Chemical Component Dictionary. Similar counts are reported in the Torsion and Rings columns. '-' means no outliers of that kind were identified.

Mol	Type	Chain	Res	Link	Chirals	Torsions	Rings
2	NAG	C	1	1,2	-	1/6/23/26	0/1/1/1
2	FUC	C	2	2	-	-	0/1/1/1
3	NAG	D	1	1,3	-	2/6/23/26	0/1/1/1
3	NAG	D	2	3	1/1/5/7	4/6/23/26	0/1/1/1
4	NAG	E	1	4,1	1/1/5/7	3/6/23/26	0/1/1/1
4	FUL	E	2	4	1/1/4/5	-	0/1/1/1
3	NAG	F	1	1,3	-	2/6/23/26	0/1/1/1
3	NAG	F	2	3	-	2/6/23/26	0/1/1/1
5	NAG	G	1	1,5	1/1/5/7	0/6/23/26	0/1/1/1
5	NAG	G	2	5	-	2/6/23/26	0/1/1/1
5	FUL	G	3	5	-	-	0/1/1/1
5	NAG	H	1	1,5	-	2/6/23/26	0/1/1/1
5	NAG	H	2	5	-	2/6/23/26	0/1/1/1
5	FUL	H	3	5	-	-	0/1/1/1

The worst 5 of 16 bond length outliers are listed below:

Mol	Chain	Res	Type	Atoms	Z	Observed(Å)	Ideal(Å)
3	F	2	NAG	O5-C1	3.46	1.49	1.43
5	G	3	FUL	O5-C1	-3.37	1.38	1.43
5	H	3	FUL	O5-C1	-3.36	1.38	1.43
4	E	2	FUL	O5-C1	-3.33	1.38	1.43
5	G	1	NAG	O5-C1	3.06	1.48	1.43

The worst 5 of 12 bond angle outliers are listed below:

Mol	Chain	Res	Type	Atoms	Z	Observed(°)	Ideal(°)
5	H	3	FUL	C1-C2-C3	5.43	116.34	109.67
4	E	2	FUL	O5-C1-C2	-4.08	104.48	110.77
5	G	1	NAG	C1-O5-C5	3.79	117.33	112.19
3	F	2	NAG	C1-O5-C5	2.78	115.97	112.19
4	E	1	NAG	C1-O5-C5	2.49	115.57	112.19

All (4) chirality outliers are listed below:

Mol	Chain	Res	Type	Atom
3	D	2	NAG	C1
4	E	1	NAG	C1
4	E	2	FUL	C1
5	G	1	NAG	C1

5 of 20 torsion outliers are listed below:

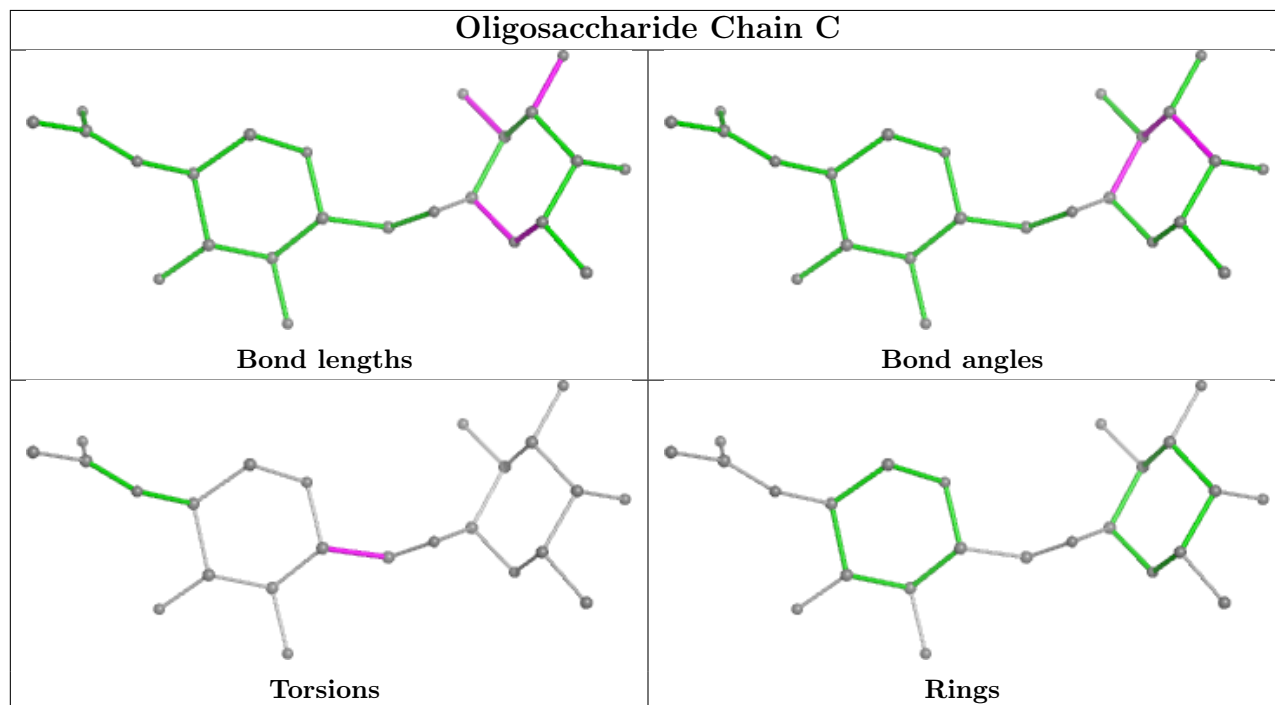
Mol	Chain	Res	Type	Atoms
4	E	1	NAG	O5-C5-C6-O6
3	D	2	NAG	O5-C5-C6-O6
3	F	1	NAG	C4-C5-C6-O6
5	H	2	NAG	C4-C5-C6-O6
3	D	2	NAG	C4-C5-C6-O6

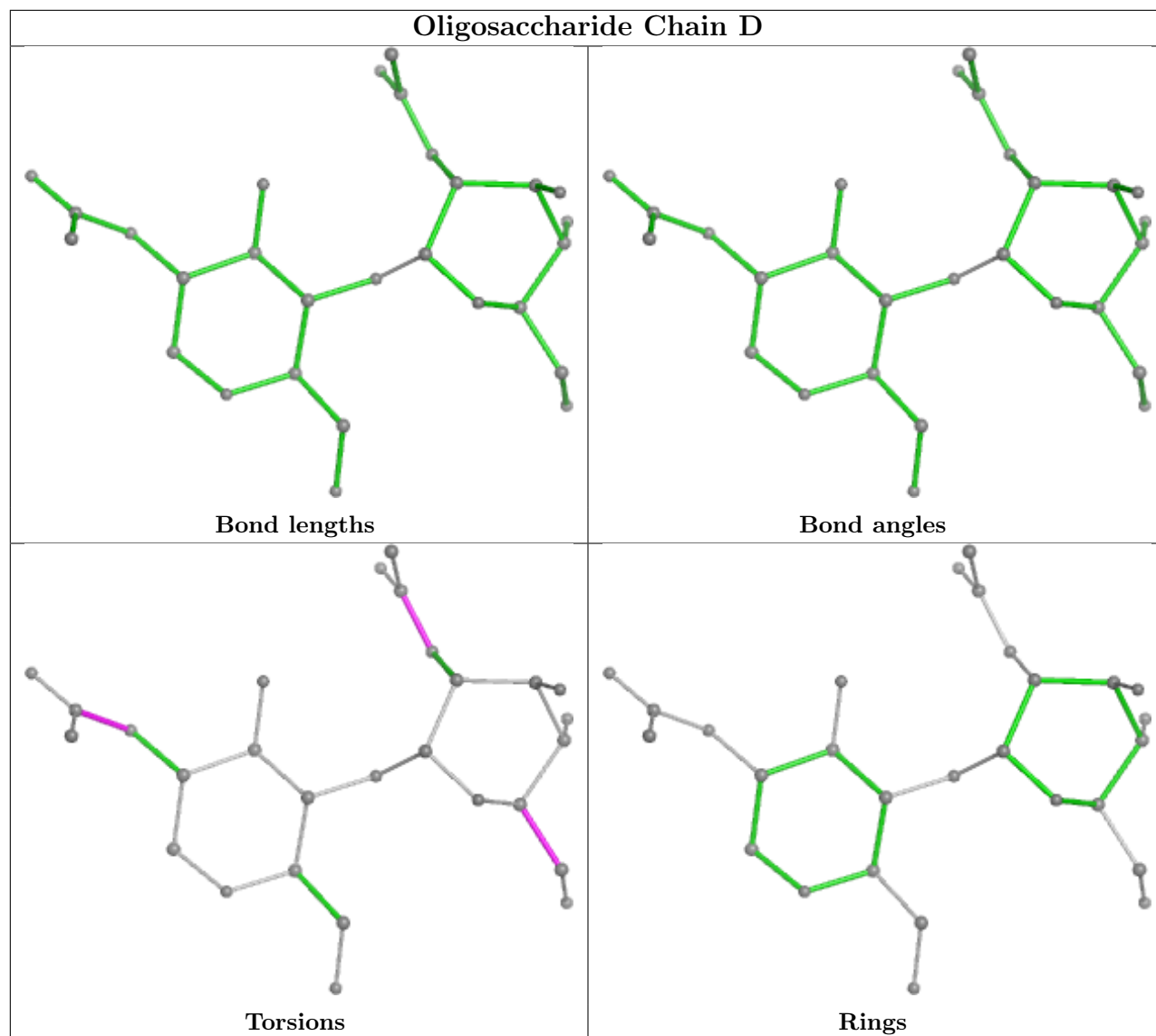
There are no ring outliers.

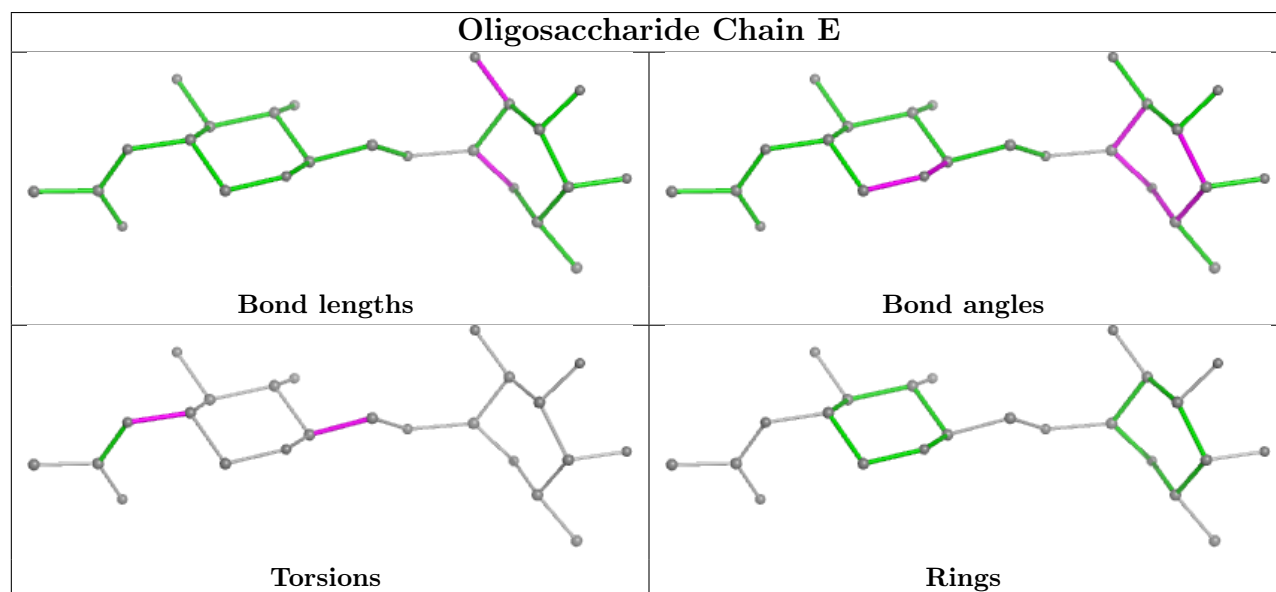
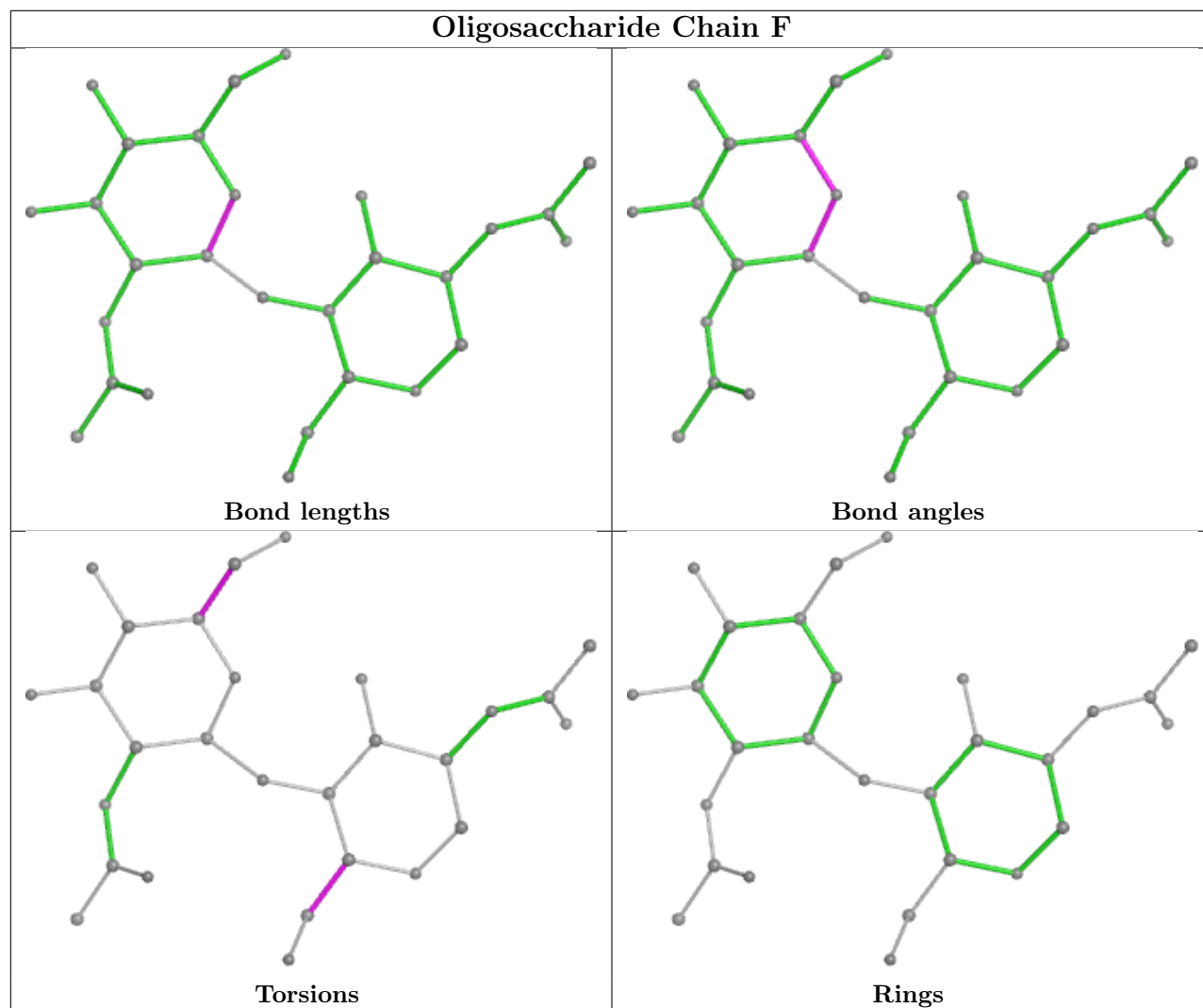
4 monomers are involved in 5 short contacts:

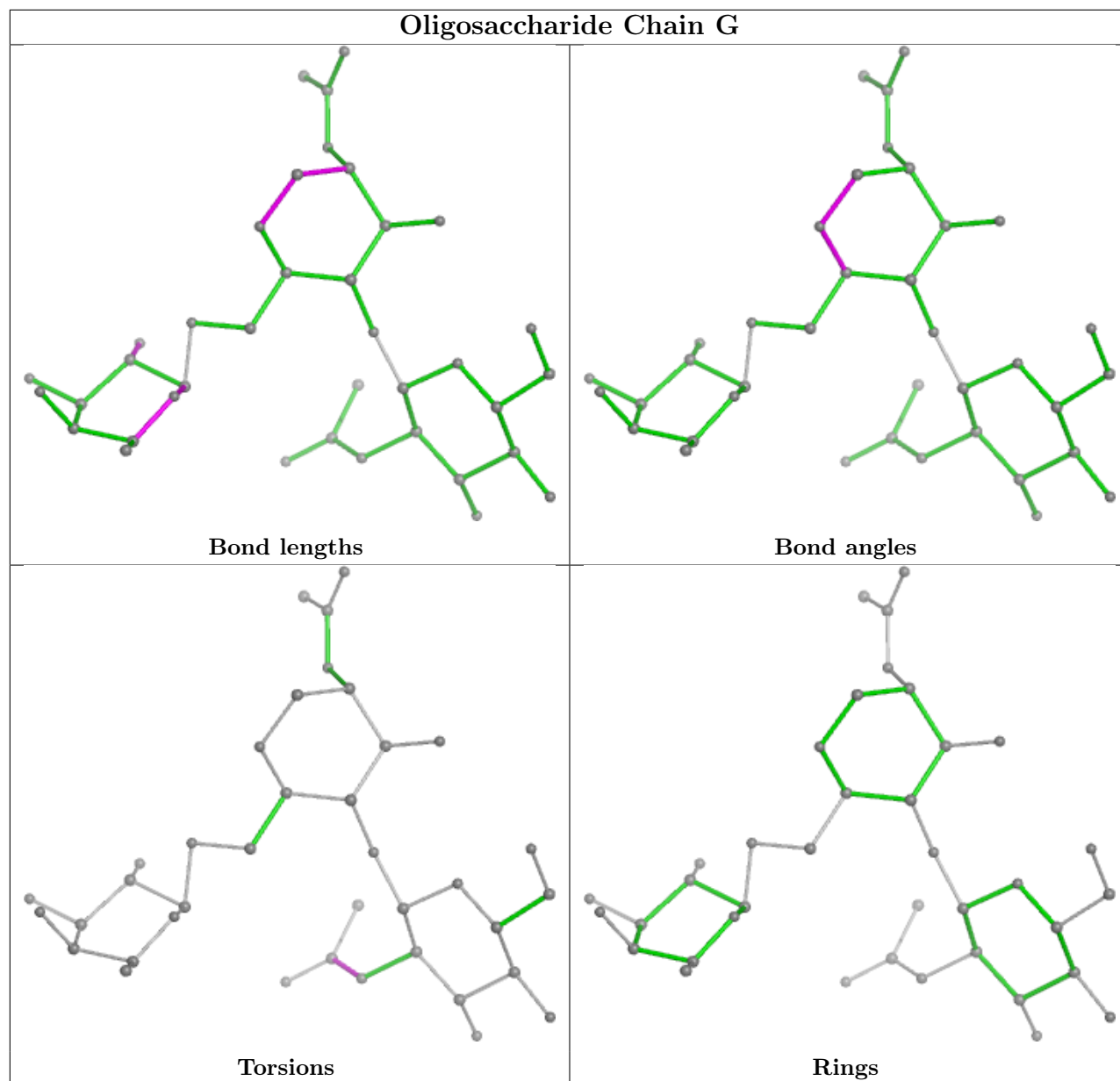
Mol	Chain	Res	Type	Clashes	Symm-Clashes
4	E	1	NAG	1	0
5	H	1	NAG	1	0
5	H	3	FUL	1	0
4	E	2	FUL	2	0

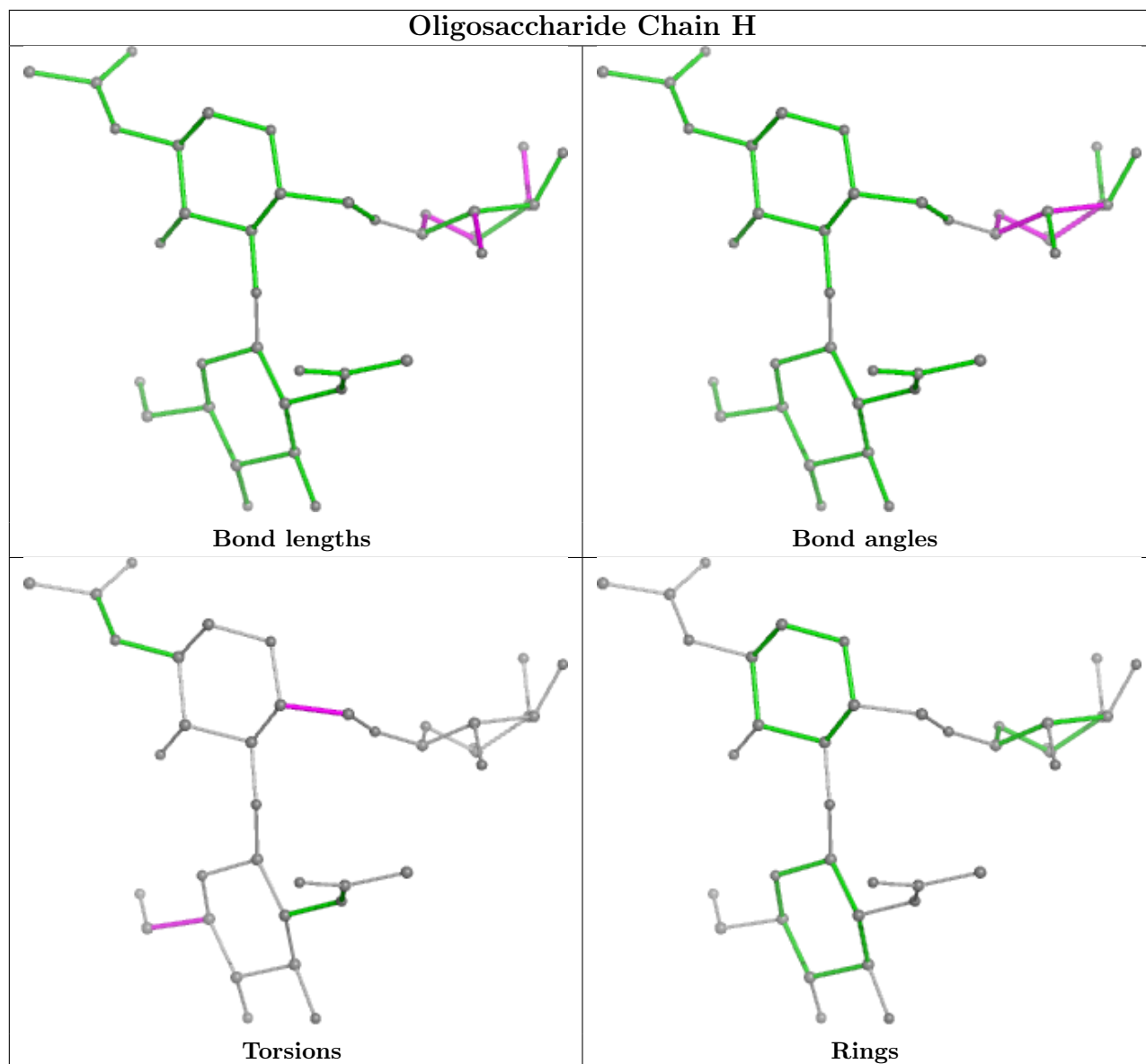
The following is a two-dimensional graphical depiction of Mogul quality analysis of bond lengths, bond angles, torsion angles, and ring geometry for oligosaccharide.











5.6 Ligand geometry [i](#)

Of 21 ligands modelled in this entry, 2 are monoatomic - leaving 19 for Mogul analysis.

In the following table, the Counts columns list the number of bonds (or angles) for which Mogul statistics could be retrieved, the number of bonds (or angles) that are observed in the model and the number of bonds (or angles) that are defined in the Chemical Component Dictionary. The Link column lists molecule types, if any, to which the group is linked. The Z score for a bond length (or angle) is the number of standard deviations the observed value is removed from the expected value. A bond length (or angle) with $|Z| > 2$ is considered an outlier worth inspection. RMSZ is the root-mean-square of all Z scores of the bond lengths (or angles).

Mol	Type	Chain	Res	Link	Bond lengths			Bond angles		
					Counts	RMSZ	$\# Z > 2$	Counts	RMSZ	$\# Z > 2$
6	GOL	A	602	-	5,5,5	0.57	0	5,5,5	0.30	0

Mol	Type	Chain	Res	Link	Bond lengths			Bond angles		
					Counts	RMSZ	# Z > 2	Counts	RMSZ	# Z > 2
6	GOL	B	602	-	5,5,5	0.31	0	5,5,5	0.84	0
10	NAG	A	607	1	14,14,15	0.76	0	17,19,21	0.76	0
6	GOL	A	603	-	5,5,5	0.45	0	5,5,5	0.27	0
8	5HH	B	605	-	31,31,31	2.40	4 (12%)	42,43,43	2.81	12 (28%)
10	NAG	B	616	1	14,14,15	0.60	1 (7%)	17,19,21	1.00	1 (5%)
10	NAG	A	614	1	14,14,15	0.90	1 (7%)	17,19,21	1.32	1 (5%)
7	EDO	B	604	-	3,3,3	0.69	0	2,2,2	0.33	0
10	NAG	B	613	1	14,14,15	0.36	0	17,19,21	0.75	1 (5%)
10	NAG	B	609	1	14,14,15	0.37	0	17,19,21	1.24	3 (17%)
6	GOL	B	601	-	5,5,5	0.38	0	5,5,5	0.33	0
7	EDO	B	603	-	3,3,3	0.61	0	2,2,2	0.06	0
10	NAG	B	607	1	14,14,15	1.27	2 (14%)	17,19,21	1.60	3 (17%)
10	NAG	B	614	1	14,14,15	0.30	0	17,19,21	0.54	0
10	NAG	B	615	1	14,14,15	0.56	0	17,19,21	0.65	1 (5%)
6	GOL	A	601	-	5,5,5	0.34	0	5,5,5	0.54	0
7	EDO	A	604	-	3,3,3	0.59	0	2,2,2	0.09	0
8	5HH	A	605	-	31,31,31	2.61	4 (12%)	42,43,43	2.64	11 (26%)
10	NAG	B	608	1	14,14,15	0.68	1 (7%)	17,19,21	0.80	0

In the following table, the Chirals column lists the number of chiral outliers, the number of chiral centers analysed, the number of these observed in the model and the number defined in the Chemical Component Dictionary. Similar counts are reported in the Torsion and Rings columns. '-' means no outliers of that kind were identified.

Mol	Type	Chain	Res	Link	Chirals	Torsions	Rings
6	GOL	A	602	-	-	4/4/4/4	-
6	GOL	B	602	-	-	1/4/4/4	-
10	NAG	A	607	1	-	4/6/23/26	0/1/1/1
6	GOL	A	603	-	-	2/4/4/4	-
8	5HH	B	605	-	-	4/16/26/26	0/4/4/4
10	NAG	B	616	1	1/1/5/7	2/6/23/26	0/1/1/1
10	NAG	A	614	1	1/1/5/7	4/6/23/26	0/1/1/1
7	EDO	B	604	-	-	0/1/1/1	-
10	NAG	B	613	1	-	2/6/23/26	0/1/1/1
10	NAG	B	609	1	1/1/5/7	2/6/23/26	0/1/1/1
6	GOL	B	601	-	-	3/4/4/4	-
7	EDO	B	603	-	-	0/1/1/1	-
10	NAG	B	607	1	1/1/5/7	3/6/23/26	0/1/1/1

Continued on next page...

Continued from previous page...

Mol	Type	Chain	Res	Link	Chirals	Torsions	Rings
10	NAG	B	614	1	-	2/6/23/26	0/1/1/1
10	NAG	B	615	1	-	2/6/23/26	0/1/1/1
6	GOL	A	601	-	-	2/4/4/4	-
7	EDO	A	604	-	-	1/1/1/1	-
8	5HH	A	605	-	-	9/16/26/26	0/4/4/4
10	NAG	B	608	1	1/1/5/7	4/6/23/26	0/1/1/1

The worst 5 of 13 bond length outliers are listed below:

Mol	Chain	Res	Type	Atoms	Z	Observed(Å)	Ideal(Å)
8	A	605	5HH	O2-S1	8.71	1.53	1.43
8	B	605	5HH	O1-S1	8.24	1.52	1.43
8	A	605	5HH	O1-S1	7.57	1.52	1.43
8	B	605	5HH	O2-S1	7.07	1.51	1.43
8	A	605	5HH	C22-C15	-6.36	1.40	1.51

The worst 5 of 33 bond angle outliers are listed below:

Mol	Chain	Res	Type	Atoms	Z	Observed(°)	Ideal(°)
8	A	605	5HH	O2-S1-O1	-11.84	105.00	119.55
8	B	605	5HH	C16-S1-N2	9.76	121.09	107.55
8	B	605	5HH	O2-S1-O1	-7.30	110.58	119.55
8	B	605	5HH	C22-N1-C20	5.06	119.56	111.36
8	B	605	5HH	C12-C16-S1	5.04	124.28	120.03

All (5) chirality outliers are listed below:

Mol	Chain	Res	Type	Atom
10	A	614	NAG	C1
10	B	607	NAG	C1
10	B	608	NAG	C1
10	B	609	NAG	C1
10	B	616	NAG	C1

5 of 51 torsion outliers are listed below:

Mol	Chain	Res	Type	Atoms
6	A	601	GOL	O1-C1-C2-C3
6	A	602	GOL	O1-C1-C2-C3
6	A	603	GOL	O1-C1-C2-C3

Continued on next page...

Continued from previous page...

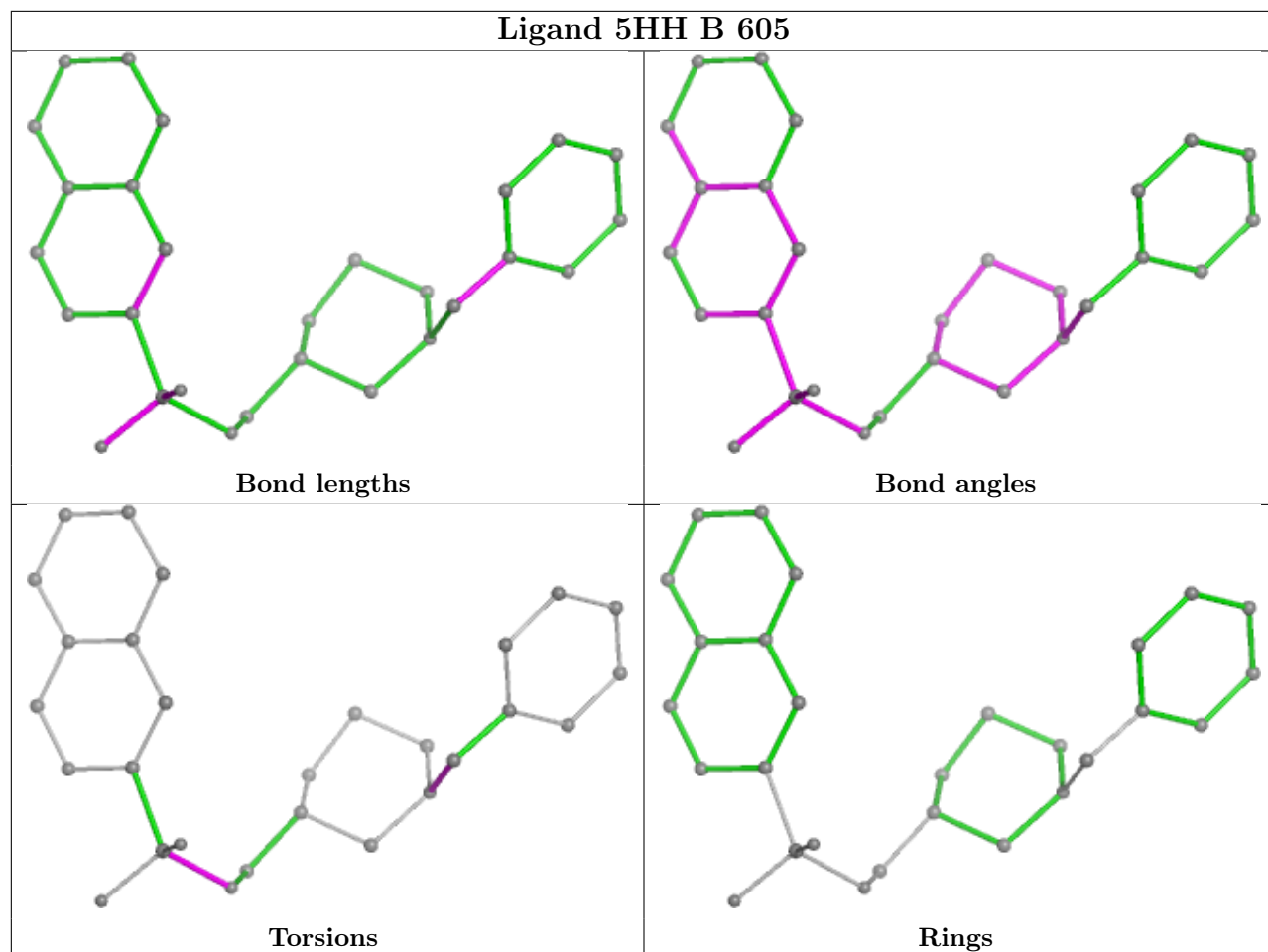
Mol	Chain	Res	Type	Atoms
6	B	601	GOL	O1-C1-C2-C3
6	B	602	GOL	C1-C2-C3-O3

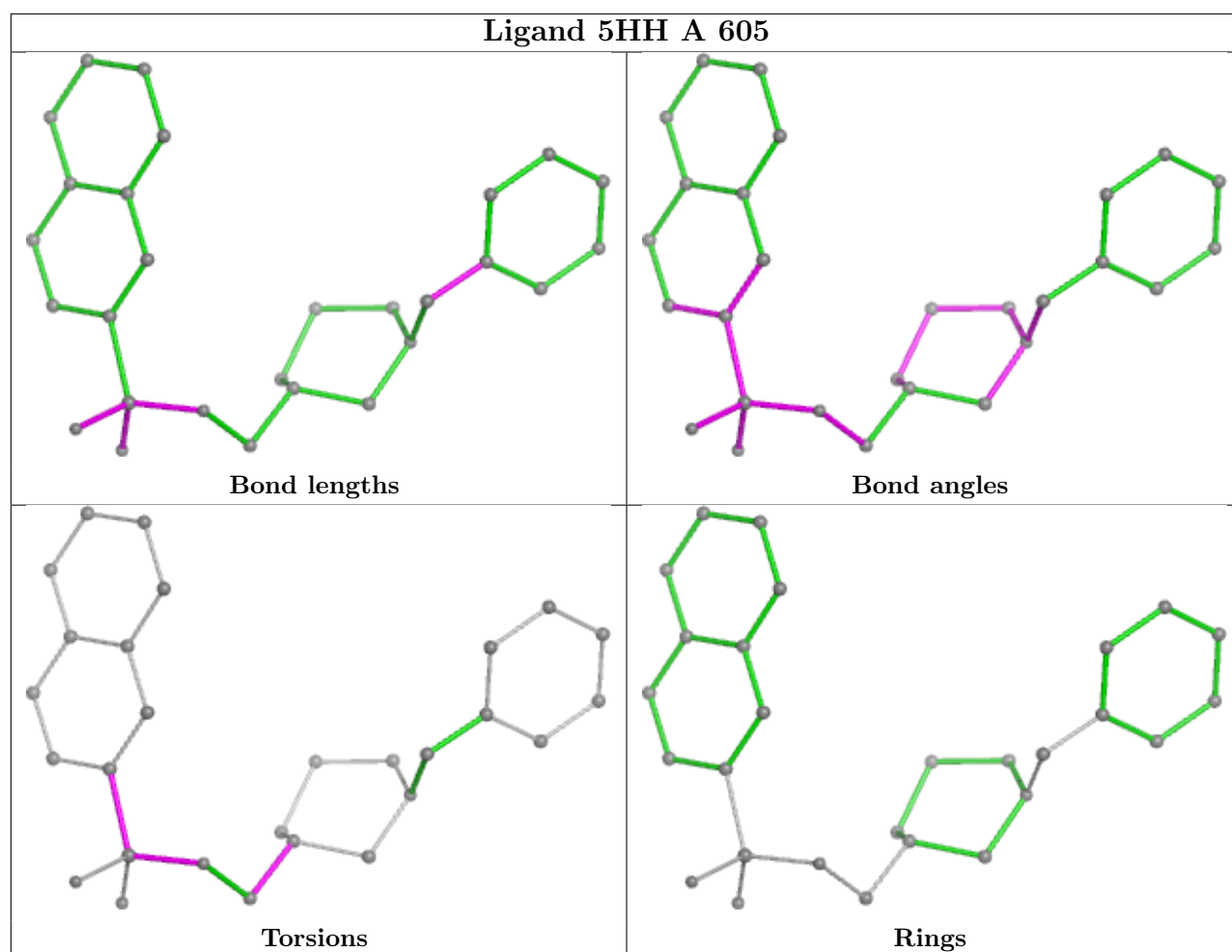
There are no ring outliers.

1 monomer is involved in 1 short contact:

Mol	Chain	Res	Type	Clashes	Symm-Clashes
6	B	602	GOL	1	0

The following is a two-dimensional graphical depiction of Mogul quality analysis of bond lengths, bond angles, torsion angles, and ring geometry for all instances of the Ligand of Interest. In addition, ligands with molecular weight > 250 and outliers as shown on the validation Tables will also be included. For torsion angles, if less than 5% of the Mogul distribution of torsion angles is within 10 degrees of the torsion angle in question, then that torsion angle is considered an outlier. Any bond that is central to one or more torsion angles identified as an outlier by Mogul will be highlighted in the graph. For rings, the root-mean-square deviation (RMSD) between the ring in question and similar rings identified by Mogul is calculated over all ring torsion angles. If the average RMSD is greater than 60 degrees and the minimal RMSD between the ring in question and any Mogul-identified rings is also greater than 60 degrees, then that ring is considered an outlier. The outliers are highlighted in purple. The color gray indicates Mogul did not find sufficient equivalents in the CSD to analyse the geometry.





5.7 Other polymers [i](#)

There are no such residues in this entry.

5.8 Polymer linkage issues [i](#)

There are no chain breaks in this entry.

6 Fit of model and data [i](#)

6.1 Protein, DNA and RNA chains [i](#)

In the following table, the column labelled ‘#RSRZ > 2’ contains the number (and percentage) of RSRZ outliers, followed by percent RSRZ outliers for the chain as percentile scores relative to all X-ray entries and entries of similar resolution. The OWAB column contains the minimum, median, 95th percentile and maximum values of the occupancy-weighted average B-factor per residue. The column labelled ‘Q < 0.9’ lists the number of (and percentage) of residues with an average occupancy less than 0.9.

Mol	Chain	Analysed	<RSRZ>	#RSRZ>2	OWAB(Å ²)	Q<0.9
1	A	526/530 (99%)	-0.23	5 (0%) 82 81	27, 45, 71, 115	1 (0%)
1	B	524/530 (98%)	-0.25	7 (1%) 77 75	27, 44, 78, 128	4 (0%)
All	All	1050/1060 (99%)	-0.24	12 (1%) 80 79	27, 44, 73, 128	5 (0%)

The worst 5 of 12 RSRZ outliers are listed below:

Mol	Chain	Res	Type	RSRZ
1	A	282	TYR	3.1
1	A	237	TYR	2.9
1	B	52	TRP	2.8
1	B	101	ALA	2.6
1	A	255	GLU	2.6

6.2 Non-standard residues in protein, DNA, RNA chains [i](#)

In the following table, the Atoms column lists the number of modelled atoms in the group and the number defined in the chemical component dictionary. The B-factors column lists the minimum, median, 95th percentile and maximum values of B factors of atoms in the group. The column labelled ‘Q < 0.9’ lists the number of atoms with occupancy less than 0.9.

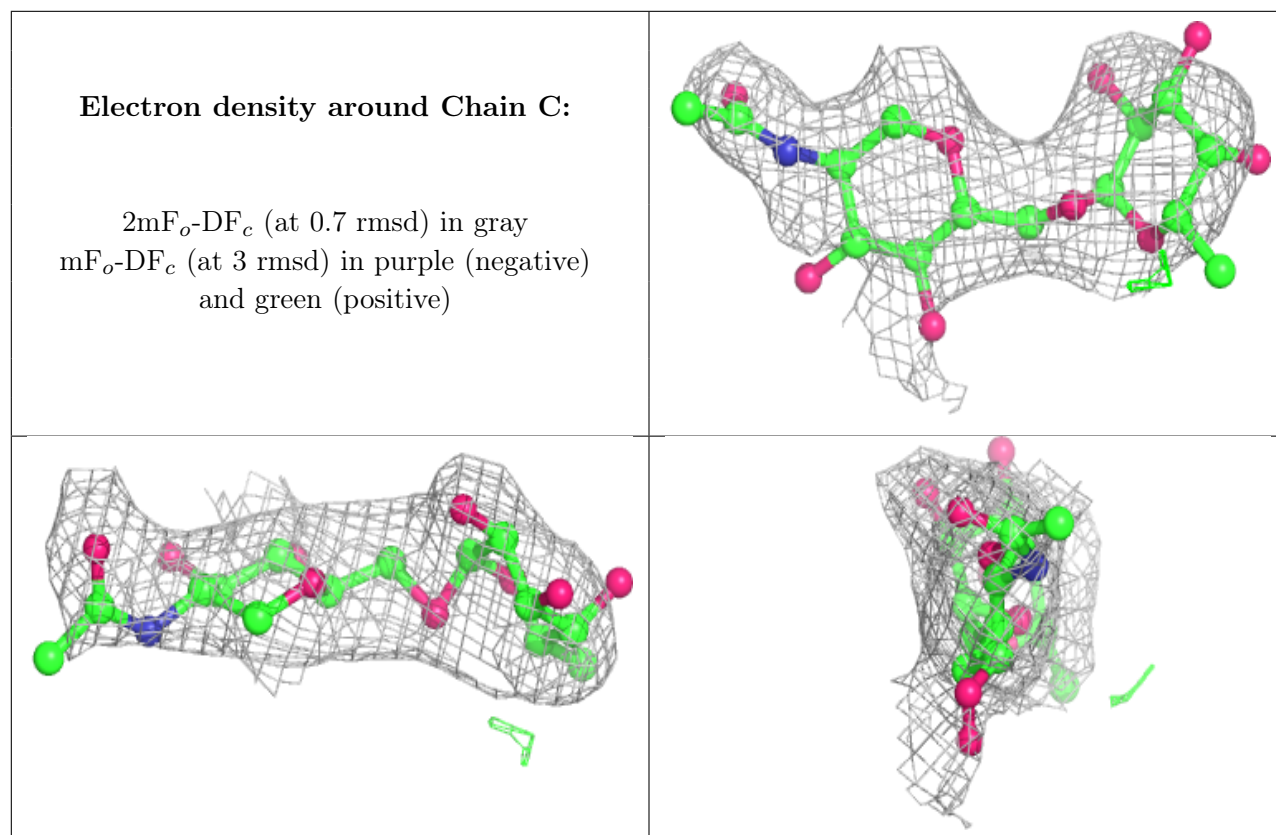
Mol	Type	Chain	Res	Atoms	RSCC	RSR	B-factors(Å ²)	Q<0.9
1	CSO	A	66	7/8	0.97	0.10	41,42,53,59	0
1	CSO	B	66	7/8	0.98	0.14	33,35,43,45	0

6.3 Carbohydrates [i](#)

In the following table, the Atoms column lists the number of modelled atoms in the group and the number defined in the chemical component dictionary. The B-factors column lists the minimum, median, 95th percentile and maximum values of B factors of atoms in the group. The column labelled ‘Q < 0.9’ lists the number of atoms with occupancy less than 0.9.

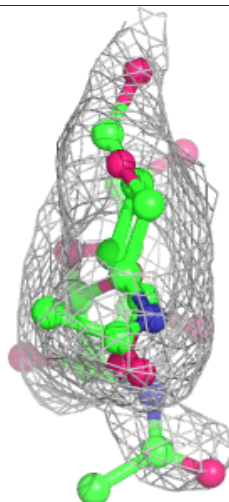
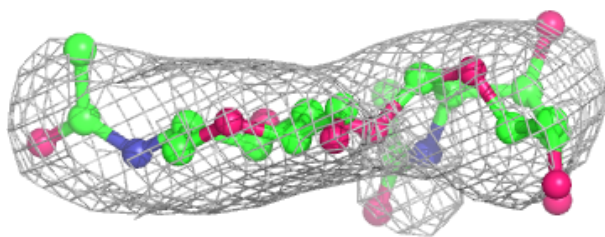
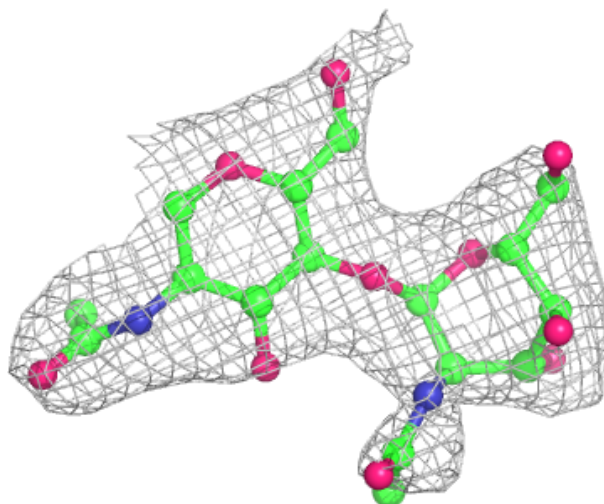
Mol	Type	Chain	Res	Atoms	RSCC	RSR	B-factors(\AA^2)	Q<0.9
5	NAG	G	2	14/15	0.70	0.50	118,123,130,130	0
5	NAG	G	1	14/15	0.73	0.22	89,109,115,117	0
3	NAG	F	2	14/15	0.78	0.20	57,71,79,81	0
5	NAG	H	2	14/15	0.82	0.44	96,102,110,111	0
5	FUL	G	3	10/11	0.83	0.29	94,100,109,109	0
2	NAG	C	1	14/15	0.84	0.28	78,93,101,103	0
4	NAG	E	1	14/15	0.85	0.26	92,109,111,111	0
2	FUC	C	2	10/11	0.87	0.35	91,105,108,109	0
3	NAG	D	2	14/15	0.88	0.33	88,97,101,101	0
4	FUL	E	2	10/11	0.90	0.46	90,97,100,109	0
5	NAG	H	1	14/15	0.91	0.28	80,86,96,101	0
5	FUL	H	3	10/11	0.92	0.40	76,85,88,93	0
3	NAG	F	1	14/15	0.94	0.14	53,63,67,68	0
3	NAG	D	1	14/15	0.94	0.15	62,68,81,84	0

The following is a graphical depiction of the model fit to experimental electron density for oligosaccharide. Each fit is shown from different orientation to approximate a three-dimensional view.



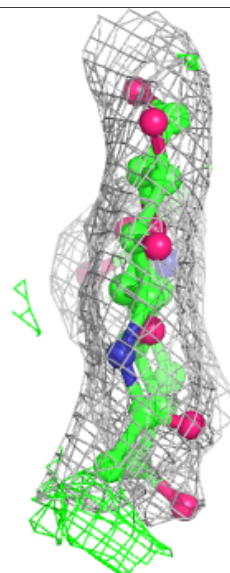
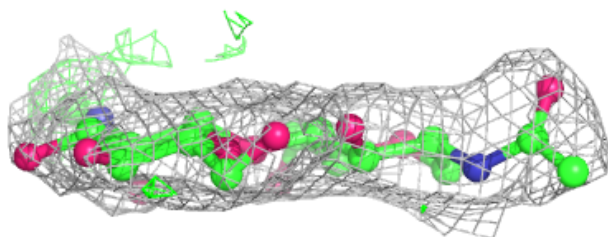
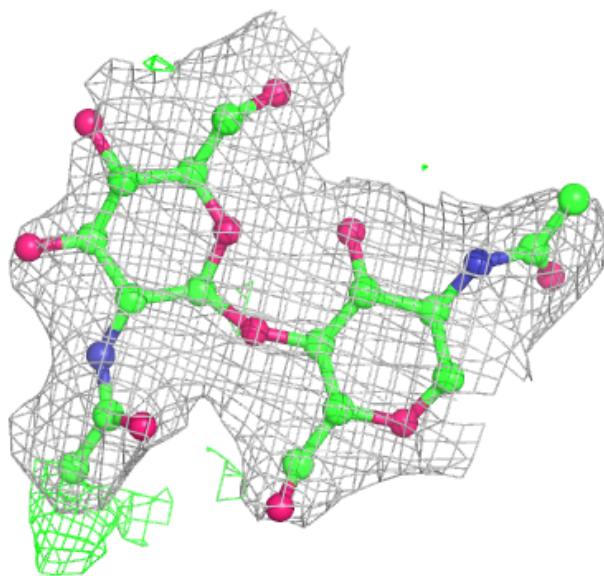
Electron density around Chain D:

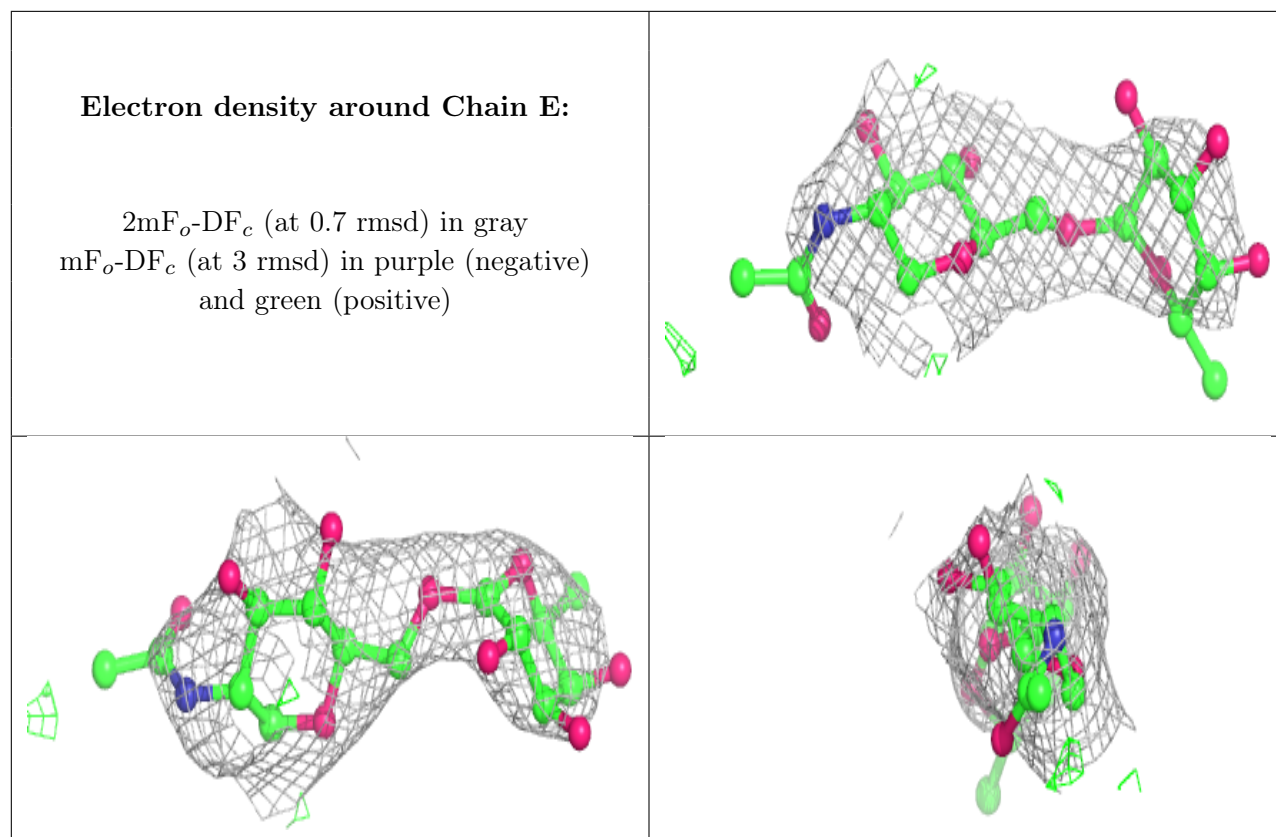
$2mF_o-DF_c$ (at 0.7 rmsd) in gray
 mF_o-DF_c (at 3 rmsd) in purple (negative)
and green (positive)



Electron density around Chain F:

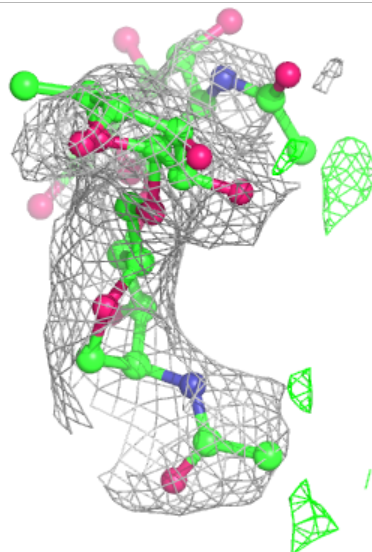
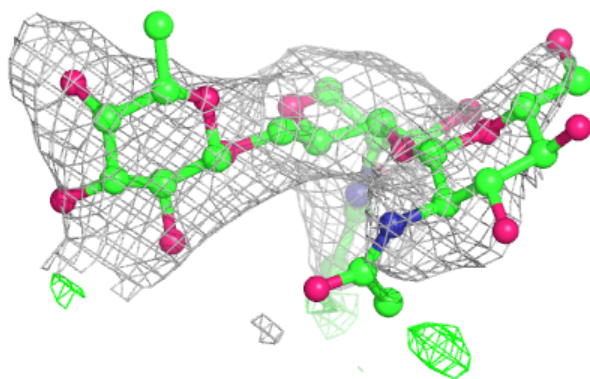
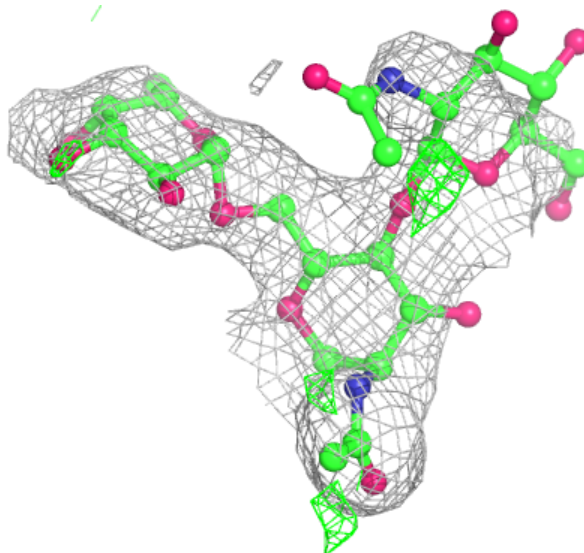
$2mF_o-DF_c$ (at 0.7 rmsd) in gray
 mF_o-DF_c (at 3 rmsd) in purple (negative)
and green (positive)

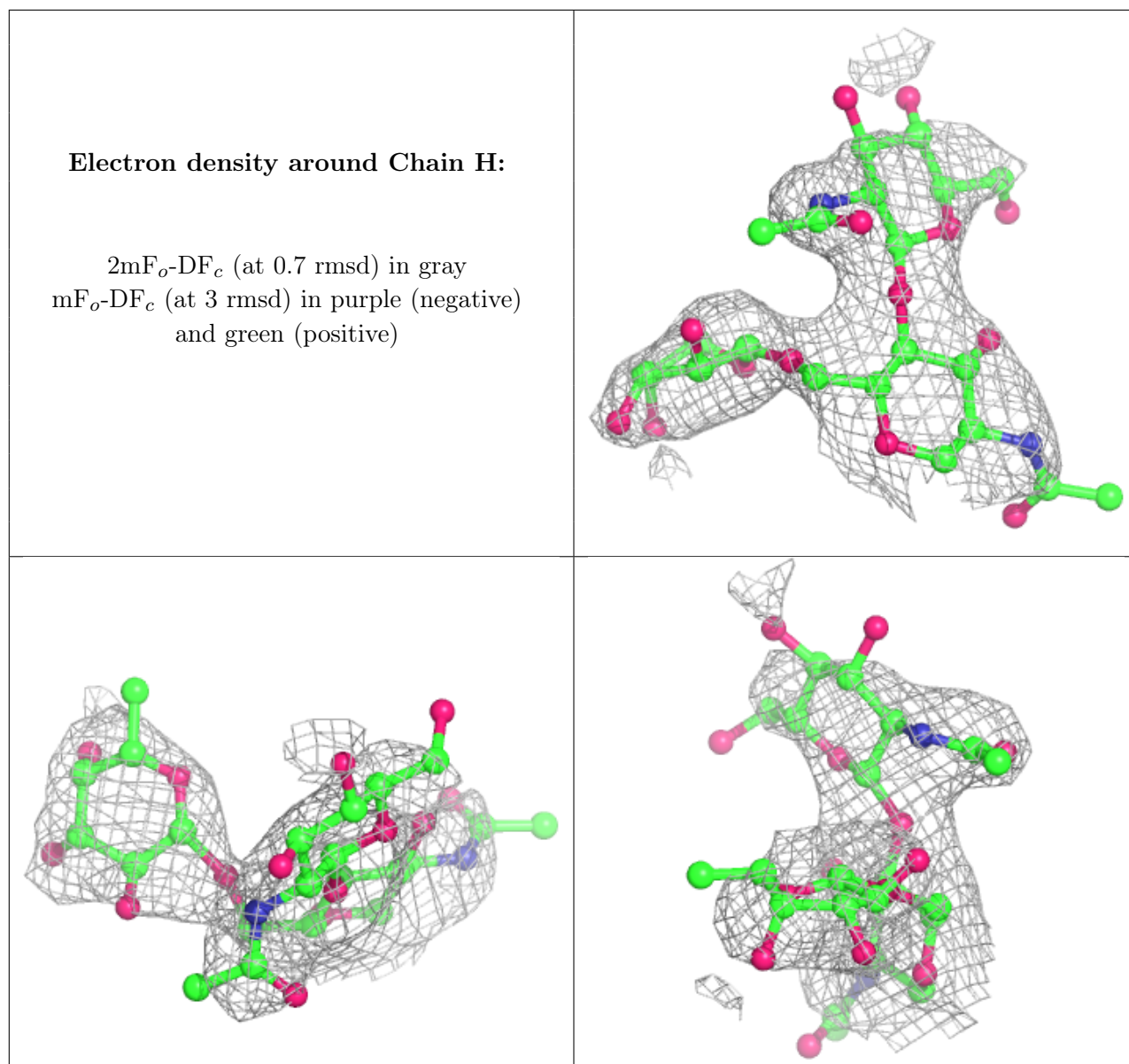




Electron density around Chain G:

$2mF_o-DF_c$ (at 0.7 rmsd) in gray
 mF_o-DF_c (at 3 rmsd) in purple (negative)
and green (positive)





6.4 Ligands [i](#)

In the following table, the Atoms column lists the number of modelled atoms in the group and the number defined in the chemical component dictionary. The B-factors column lists the minimum, median, 95th percentile and maximum values of B factors of atoms in the group. The column labelled 'Q < 0.9' lists the number of atoms with occupancy less than 0.9.

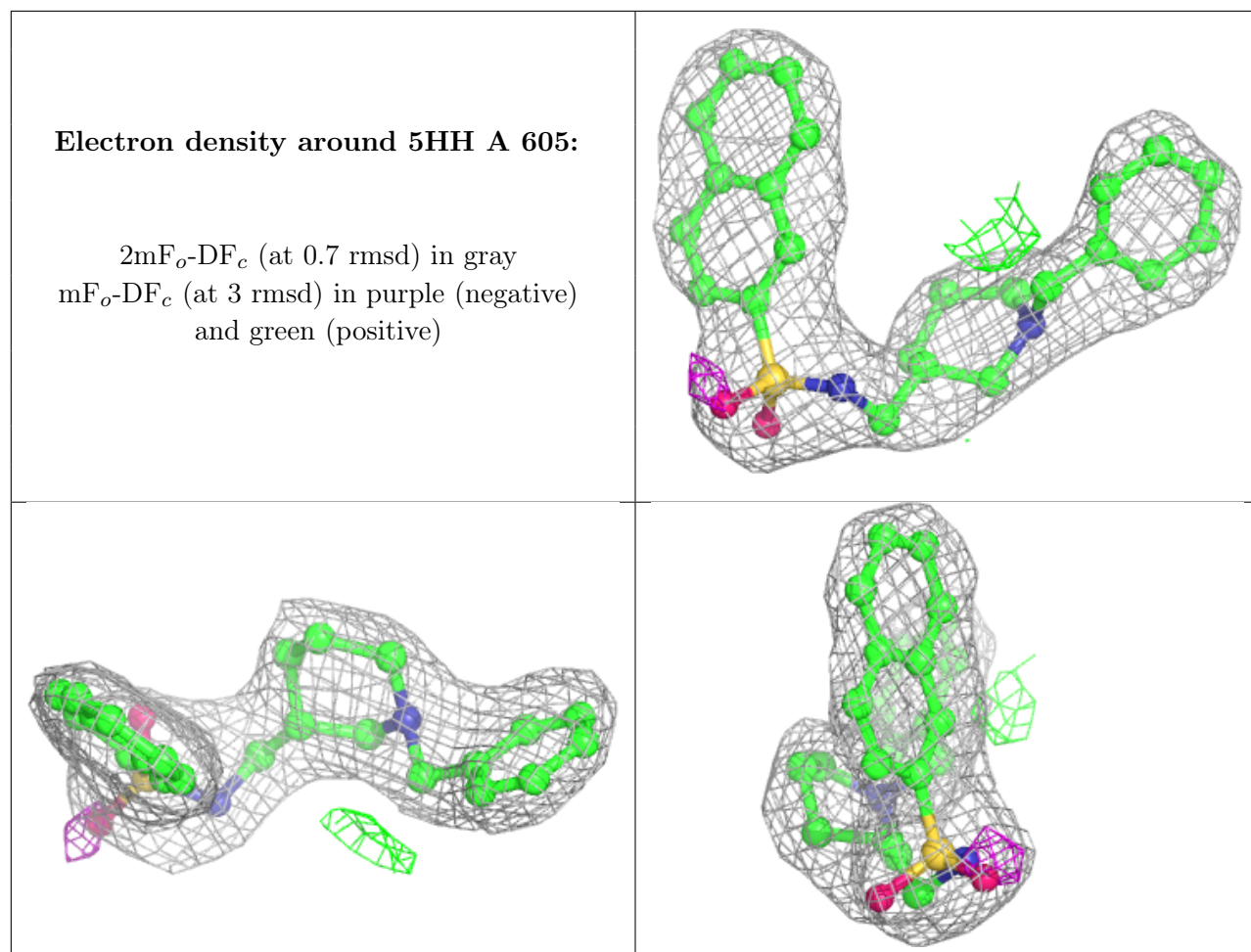
Mol	Type	Chain	Res	Atoms	RSCC	RSR	B-factors(Å ²)	Q < 0.9
10	NAG	B	608	14/15	0.66	0.29	87,110,115,117	0
10	NAG	B	615	14/15	0.66	0.34	88,106,109,112	0
10	NAG	B	607	14/15	0.67	0.38	91,108,111,115	0
6	GOL	B	602	6/6	0.75	0.26	45,50,55,60	0
10	NAG	B	613	14/15	0.76	0.23	91,99,102,104	0

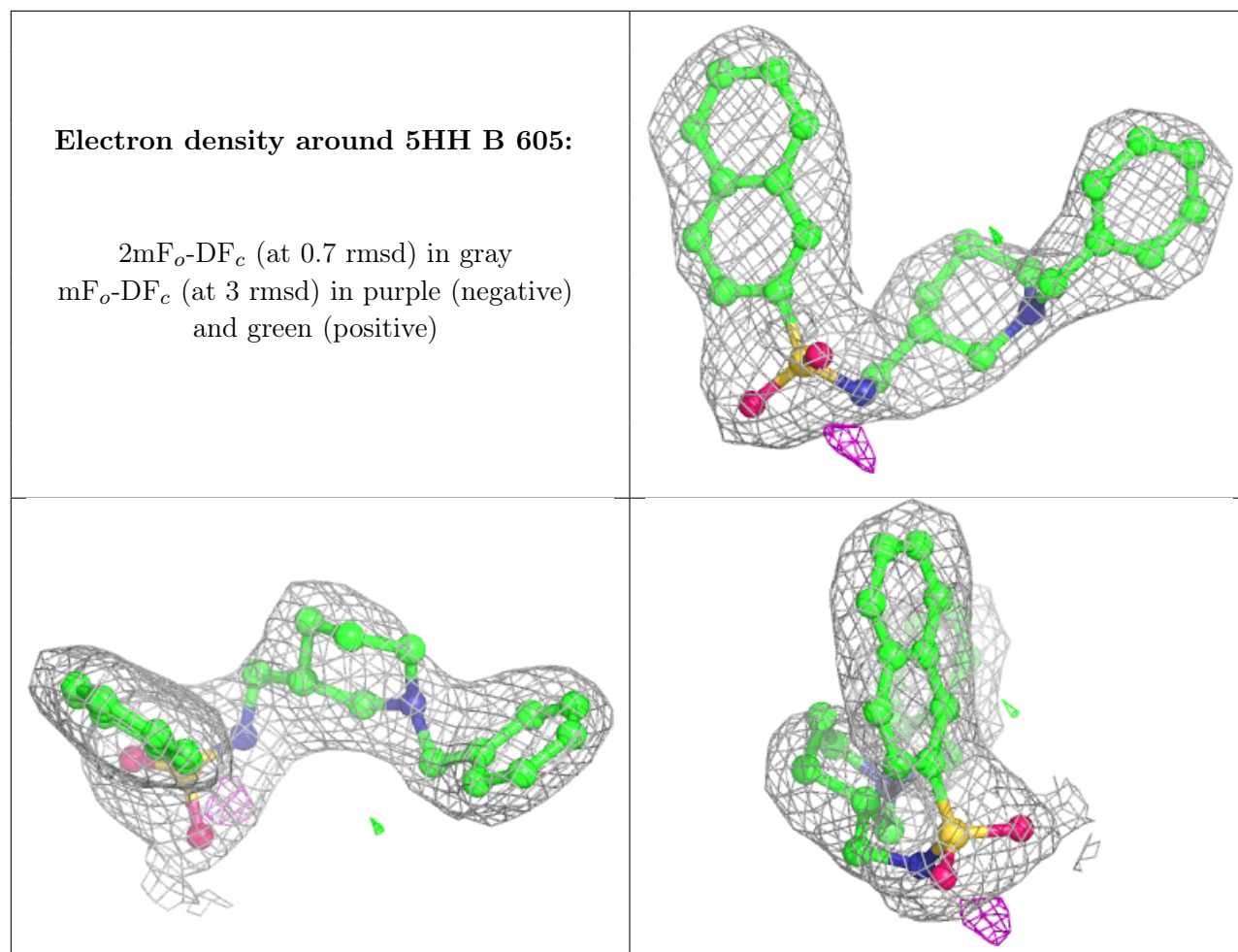
Continued on next page...

Continued from previous page...

Mol	Type	Chain	Res	Atoms	RSCC	RSR	B-factors(Å ²)	Q<0.9
10	NAG	B	616	14/15	0.76	0.23	88,101,106,107	0
10	NAG	B	609	14/15	0.79	0.34	86,91,96,102	0
10	NAG	A	607	14/15	0.82	0.35	75,85,93,94	0
6	GOL	A	603	6/6	0.86	0.28	59,63,67,72	0
10	NAG	A	614	14/15	0.86	0.20	66,69,76,78	0
6	GOL	A	602	6/6	0.87	0.31	43,52,55,55	0
7	EDO	B	603	4/4	0.90	0.14	47,50,55,55	0
10	NAG	B	614	14/15	0.90	0.20	58,63,70,75	0
7	EDO	A	604	4/4	0.91	0.14	61,64,70,71	0
7	EDO	B	604	4/4	0.94	0.17	49,50,51,52	0
6	GOL	B	601	6/6	0.94	0.27	49,54,60,65	0
6	GOL	A	601	6/6	0.95	0.28	58,62,66,69	0
8	5HH	A	605	28/28	0.95	0.18	39,49,56,57	0
8	5HH	B	605	28/28	0.95	0.17	31,41,53,60	0
9	CL	B	606	1/1	0.97	0.45	50,50,50,50	0
9	CL	A	606	1/1	0.97	0.47	48,48,48,48	0

The following is a graphical depiction of the model fit to experimental electron density of all instances of the Ligand of Interest. In addition, ligands with molecular weight > 250 and outliers as shown on the geometry validation Tables will also be included. Each fit is shown from different orientation to approximate a three-dimensional view.





6.5 Other polymers [i](#)

There are no such residues in this entry.