



# wwPDB X-ray Structure Validation Summary Report ⓘ

Apr 20, 2024 – 02:00 pm BST

PDB ID : 5DYT  
Title : Crystal structure of human butyrylcholinesterase in complex with N-((1-benzylpiperidin-3-yl)methyl)-N-methylnaphthalene-2-sulfonamide  
Authors : Coquelle, N.; Brus, B.; Colletier, J.P.  
Deposited on : 2015-09-25  
Resolution : 2.55 Å(reported)

This is a wwPDB X-ray Structure Validation Summary Report for a publicly released PDB entry.

We welcome your comments at [validation@mail.wwpdb.org](mailto:validation@mail.wwpdb.org)

A user guide is available at

<https://www.wwpdb.org/validation/2017/XrayValidationReportHelp>

with specific help available everywhere you see the ⓘ symbol.

The types of validation reports are described at

<http://www.wwpdb.org/validation/2017/FAQs#types>.

---

The following versions of software and data (see [references ⓘ](#)) were used in the production of this report:

MolProbity : 4.02b-467  
Mogul : 1.8.4, CSD as541be (2020)  
Xtrriage (Phenix) : 1.13  
EDS : 2.36.2  
buster-report : 1.1.7 (2018)  
Percentile statistics : 20191225.v01 (using entries in the PDB archive December 25th 2019)  
Refmac : 5.8.0158  
CCP4 : 7.0.044 (Gargrove)  
Ideal geometry (proteins) : Engh & Huber (2001)  
Ideal geometry (DNA, RNA) : Parkinson et al. (1996)  
Validation Pipeline (wwPDB-VP) : 2.36.2

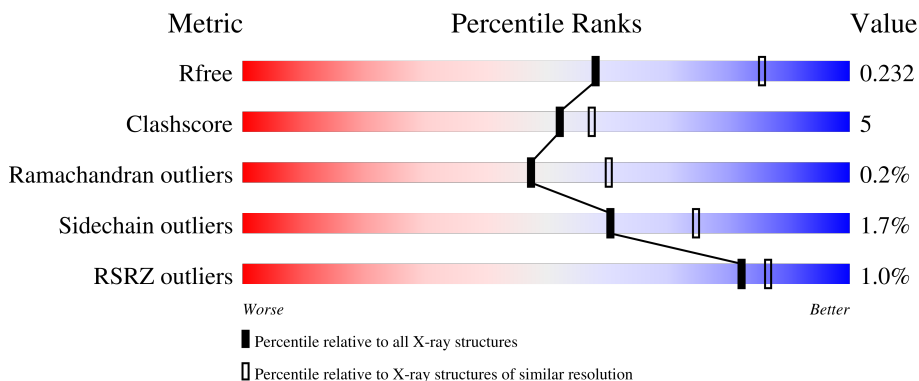
# 1 Overall quality at a glance

The following experimental techniques were used to determine the structure:

*X-RAY DIFFRACTION*

The reported resolution of this entry is 2.55 Å.

Percentile scores (ranging between 0-100) for global validation metrics of the entry are shown in the following graphic. The table shows the number of entries on which the scores are based.



Metric	Whole archive (#Entries)	Similar resolution (#Entries, resolution range(Å))
$R_{free}$	130704	1284 (2.56-2.52)
Clashscore	141614	1332 (2.56-2.52)
Ramachandran outliers	138981	1315 (2.56-2.52)
Sidechain outliers	138945	1315 (2.56-2.52)
RSRZ outliers	127900	1272 (2.56-2.52)

The table below summarises the geometric issues observed across the polymeric chains and their fit to the electron density. The red, orange, yellow and green segments of the lower bar indicate the fraction of residues that contain outliers for  $\geq 3$ , 2, 1 and 0 types of geometric quality criteria respectively. A grey segment represents the fraction of residues that are not modelled. The numeric value for each fraction is indicated below the corresponding segment, with a dot representing fractions  $\leq 5\%$ . The upper red bar (where present) indicates the fraction of residues that have poor fit to the electron density. The numeric value is given above the bar.

Mol	Chain	Length	Quality of chain
1	A	530	
1	B	530	
2	C	3	
2	E	3	
2	G	3	

*Continued on next page...*

*Continued from previous page...*

Mol	Chain	Length	Quality of chain
3	D	2	 100%
3	F	2	 50% 50%
3	H	2	 100%
4	I	2	 50% 50%

The following table lists non-polymeric compounds, carbohydrate monomers and non-standard residues in protein, DNA, RNA chains that are outliers for geometric or electron-density-fit criteria:

Mol	Type	Chain	Res	Chirality	Geometry	Clashes	Electron density
2	NAG	E	1	X	-	-	-
2	NAG	E	2	X	-	-	X
2	FUC	E	3	X	-	-	-
2	NAG	G	2	X	-	-	X
2	FUC	G	3	X	-	-	-
3	NAG	D	2	X	-	-	-
4	FUC	I	2	X	-	-	-
5	NAG	A	610	X	-	-	-
5	NAG	B	611	X	-	-	-
9	UNX	A	623	-	-	X	-

## 2 Entry composition [i](#)

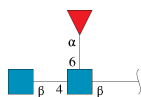
There are 12 unique types of molecules in this entry. The entry contains 9063 atoms, of which 0 are hydrogens and 0 are deuteriums.

In the tables below, the ZeroOcc column contains the number of atoms modelled with zero occupancy, the AltConf column contains the number of residues with at least one atom in alternate conformation and the Trace column contains the number of residues modelled with at most 2 atoms.

- Molecule 1 is a protein called Cholinesterase.

Mol	Chain	Residues	Atoms					ZeroOcc	AltConf	Trace
			Total	C	N	O	S			
1	A	527	Total 4210	C 2717	N 710	O 768	S 15	0	3	0
1	B	525	Total 4160	C 2688	N 697	O 760	S 15	0	0	0

- Molecule 2 is an oligosaccharide called 2-acetamido-2-deoxy-beta-D-glucopyranose-(1-4)-[alpha-L-fucopyranose-(1-6)]2-acetamido-2-deoxy-beta-D-glucopyranose.



Mol	Chain	Residues	Atoms				ZeroOcc	AltConf	Trace
			Total	C	N	O			
2	C	3	Total 38	C 22	N 2	O 14	0	0	0
2	E	3	Total 38	C 22	N 2	O 14	0	0	0
2	G	3	Total 38	C 22	N 2	O 14	0	0	0

- Molecule 3 is an oligosaccharide called 2-acetamido-2-deoxy-beta-D-glucopyranose-(1-4)-2-acetamido-2-deoxy-beta-D-glucopyranose.



Mol	Chain	Residues	Atoms				ZeroOcc	AltConf	Trace
			Total	C	N	O			
3	D	2	Total 28	C 16	N 2	O 10	0	0	0
3	F	2	Total 28	C 16	N 2	O 10	0	0	0

*Continued on next page...*

Continued from previous page...

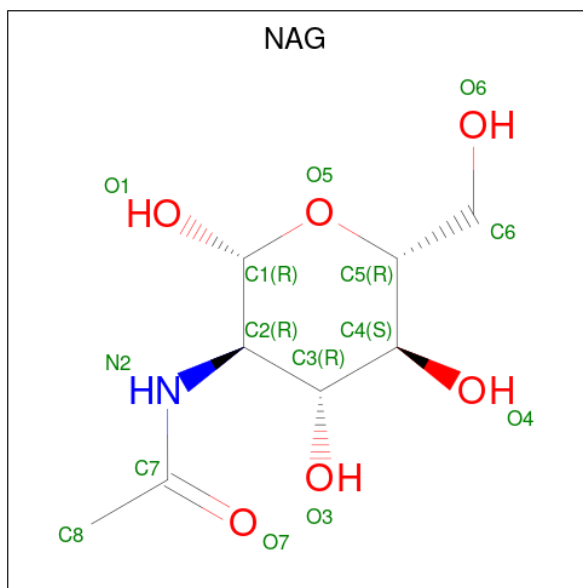
Mol	Chain	Residues	Atoms				ZeroOcc	AltConf	Trace
			Total	C	N	O			
3	H	2	28	16	2	10	0	0	0

- Molecule 4 is an oligosaccharide called alpha-L-fucopyranose-(1-6)-2-acetamido-2-deoxy-beta-D-glucopyranose.



Mol	Chain	Residues	Atoms				ZeroOcc	AltConf	Trace
			Total	C	N	O			
4	I	2	24	14	1	9	0	0	0

- Molecule 5 is 2-acetamido-2-deoxy-beta-D-glucopyranose (three-letter code: NAG) (formula: C<sub>8</sub>H<sub>15</sub>NO<sub>6</sub>).



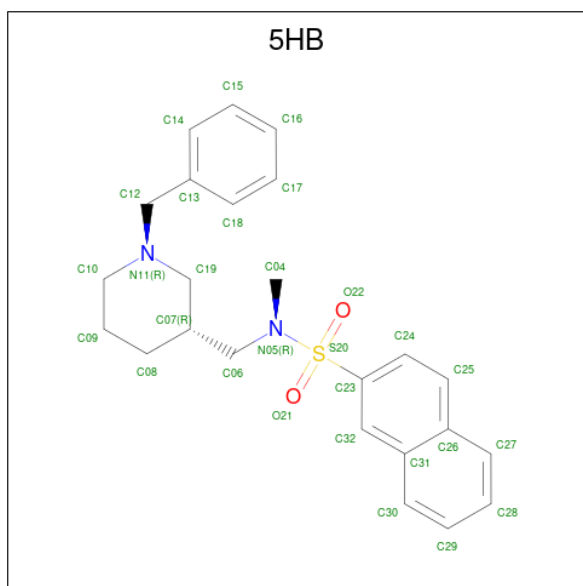
Mol	Chain	Residues	Atoms				ZeroOcc	AltConf
			Total	C	N	O		
5	A	1	14	8	1	5	0	0
5	A	1	14	8	1	5	0	0
5	B	1	14	8	1	5	0	0
5	B	1	14	8	1	5	0	0

Continued on next page...

Continued from previous page...

Mol	Chain	Residues	Atoms				ZeroOcc	AltConf
5	B	1	Total	C	N	O	0	0
			14	8	1	5		
5	B	1	Total	C	N	O	0	0
			14	8	1	5		
5	B	1	Total	C	N	O	0	0
			14	8	1	5		
5	B	1	Total	C	N	O	0	0
			14	8	1	5		

- Molecule 6 is N-[[[(3R)-1-benzylpiperidin-3-yl]methyl]-N-methylnaphthalene-2-sulfonamide (three-letter code: 5HB) (formula: C<sub>24</sub>H<sub>28</sub>N<sub>2</sub>O<sub>2</sub>S).



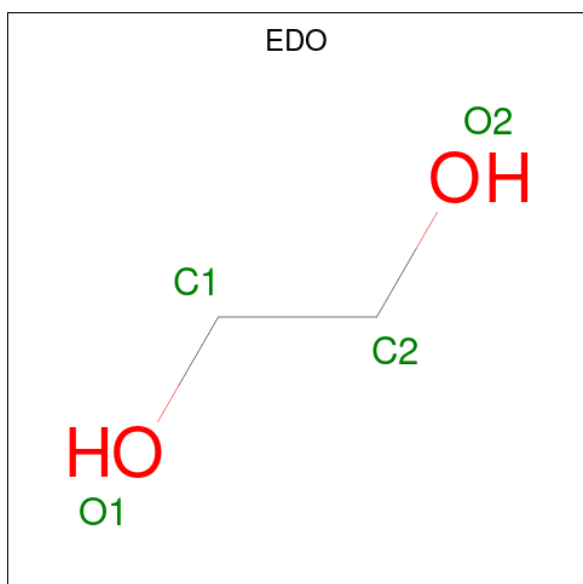
Mol	Chain	Residues	Atoms					ZeroOcc	AltConf
6	A	1	Total	C	N	O	S	0	0
			29	24	2	2	1		
6	B	1	Total	C	N	O	S	0	0
			29	24	2	2	1		

- Molecule 7 is GLYCEROL (three-letter code: GOL) (formula: C<sub>3</sub>H<sub>8</sub>O<sub>3</sub>).



Mol	Chain	Residues	Atoms	ZeroOcc	AltConf
7	A	1	Total C O 6 3 3	0	0
7	A	1	Total C O 6 3 3	0	0
7	A	1	Total C O 6 3 3	0	0
7	B	1	Total C O 6 3 3	0	0
7	B	1	Total C O 6 3 3	0	0

- Molecule 8 is 1,2-ETHANEDIOL (three-letter code: EDO) (formula:  $C_2H_6O_2$ ).

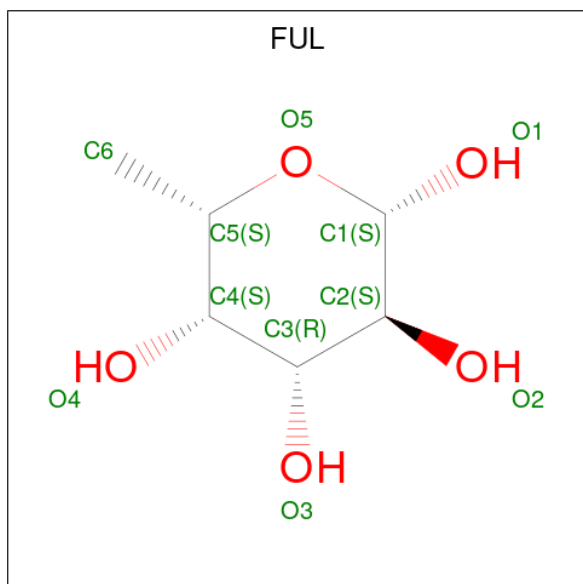


Mol	Chain	Residues	Atoms	ZeroOcc	AltConf
8	A	1	Total C O 4 2 2	0	0
8	B	1	Total C O 4 2 2	0	0
8	B	1	Total C O 4 2 2	0	0
8	B	1	Total C O 4 2 2	0	0

- Molecule 9 is UNKNOWN ATOM OR ION (three-letter code: UNX) (formula: X).

Mol	Chain	Residues	Atoms	ZeroOcc	AltConf
9	A	3	Total X 3 3	0	0
9	B	3	Total X 3 3	0	0

- Molecule 10 is beta-L-fucopyranose (three-letter code: FUL) (formula: C<sub>6</sub>H<sub>12</sub>O<sub>5</sub>).



Mol	Chain	Residues	Atoms	ZeroOcc	AltConf
10	B	1	Total C O 10 6 4	0	0

- Molecule 11 is DI(HYDROXYETHYL)ETHER (three-letter code: PEG) (formula: C<sub>4</sub>H<sub>10</sub>O<sub>3</sub>).





Mol	Chain	Residues	Atoms		ZeroOcc	AltConf
11	B	1	Total	C O	0	0
			7	4 3		

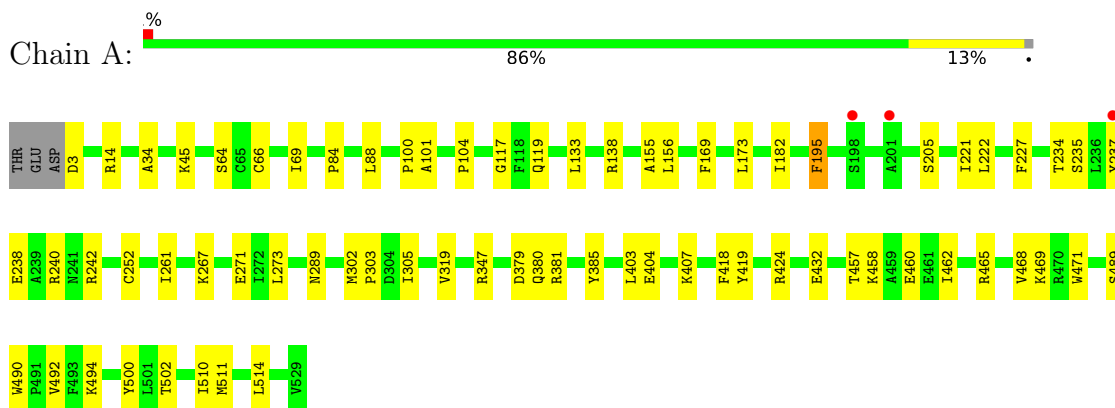
- Molecule 12 is water.

Mol	Chain	Residues	Atoms		ZeroOcc	AltConf
12	A	118	Total	O	0	0
			118	118		
12	B	114	Total	O	0	0
			114	114		

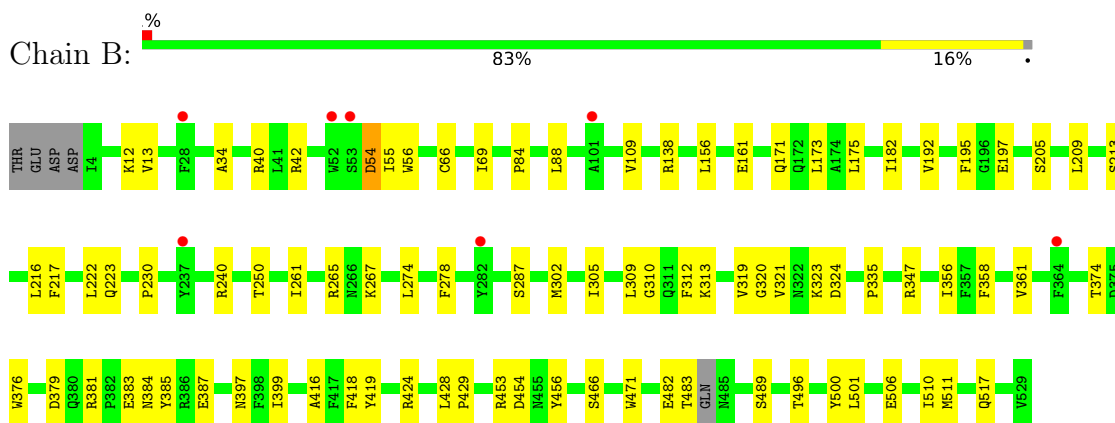
### 3 Residue-property plots [i](#)

These plots are drawn for all protein, RNA, DNA and oligosaccharide chains in the entry. The first graphic for a chain summarises the proportions of the various outlier classes displayed in the second graphic. The second graphic shows the sequence view annotated by issues in geometry and electron density. Residues are color-coded according to the number of geometric quality criteria for which they contain at least one outlier: green = 0, yellow = 1, orange = 2 and red = 3 or more. A red dot above a residue indicates a poor fit to the electron density ( $RSRZ > 2$ ). Stretches of 2 or more consecutive residues without any outlier are shown as a green connector. Residues present in the sample, but not in the model, are shown in grey.

- Molecule 1: Cholinesterase




- Molecule 1: Cholinesterase



- Molecule 2: 2-acetamido-2-deoxy-beta-D-glucopyranose-(1-4)-[alpha-L-fucopyranose-(1-6)]2-acetamido-2-deoxy-beta-D-glucopyranose



- Molecule 2: 2-acetamido-2-deoxy-beta-D-glucopyranose-(1-4)-[alpha-L-fucopyranose-(1-6)]2-acetamido-2-deoxy-beta-D-glucopyranose

Chain E:  100%

MAG1  
MAG2  
FUC3

- Molecule 2: 2-acetamido-2-deoxy-beta-D-glucopyranose-(1-4)-[alpha-L-fucopyranose-(1-6)]2-acetamido-2-deoxy-beta-D-glucopyranose

Chain G:  67% 33%


MAG1  
MAG2  
FUC3

- Molecule 3: 2-acetamido-2-deoxy-beta-D-glucopyranose-(1-4)-2-acetamido-2-deoxy-beta-D-glucopyranose

Chain D:  100%

MAG1  
MAG2

- Molecule 3: 2-acetamido-2-deoxy-beta-D-glucopyranose-(1-4)-2-acetamido-2-deoxy-beta-D-glucopyranose

Chain F:  50% 50%

MAG1  
MAG2

- Molecule 3: 2-acetamido-2-deoxy-beta-D-glucopyranose-(1-4)-2-acetamido-2-deoxy-beta-D-glucopyranose

Chain H:  100%

MAG1  
MAG2

- Molecule 4: alpha-L-fucopyranose-(1-6)-2-acetamido-2-deoxy-beta-D-glucopyranose

Chain I:  50% 50%

MAG1  
FUC2

## 4 Data and refinement statistics i

Property	Value	Source
Space group	P 21 21 21	Depositor
Cell constants a, b, c, $\alpha$ , $\beta$ , $\gamma$	76.47Å 80.23Å 231.28Å 90.00° 90.00° 90.00°	Depositor
Resolution (Å)	46.12 – 2.55 46.91 – 2.55	Depositor EDS
% Data completeness (in resolution range)	99.6 (46.12-2.55) 99.7 (46.91-2.55)	Depositor EDS
$R_{merge}$	0.08	Depositor
$R_{sym}$	(Not available)	Depositor
$\langle I/\sigma(I) \rangle$ <sup>1</sup>	2.21 (at 2.54Å)	Xtrriage
Refinement program	PHENIX (1.10_2155: ???)	Depositor
R, $R_{free}$	0.179 , 0.232 0.179 , 0.232	Depositor DCC
$R_{free}$ test set	1415 reflections (3.00%)	wwPDB-VP
Wilson B-factor (Å <sup>2</sup> )	56.5	Xtrriage
Anisotropy	0.323	Xtrriage
Bulk solvent $k_{sol}$ (e/Å <sup>3</sup> ), $B_{sol}$ (Å <sup>2</sup> )	0.31 , 48.6	EDS
L-test for twinning <sup>2</sup>	$\langle  L  \rangle = 0.49$ , $\langle L^2 \rangle = 0.32$	Xtrriage
Estimated twinning fraction	0.024 for k,h,-l	Xtrriage
$F_o, F_c$ correlation	0.95	EDS
Total number of atoms	9063	wwPDB-VP
Average B, all atoms (Å <sup>2</sup> )	57.0	wwPDB-VP

Xtrriage's analysis on translational NCS is as follows: *The largest off-origin peak in the Patterson function is 3.38% of the height of the origin peak. No significant pseudotranslation is detected.*

<sup>1</sup>Intensities estimated from amplitudes.

<sup>2</sup>Theoretical values of  $\langle |L| \rangle$ ,  $\langle L^2 \rangle$  for acentric reflections are 0.5, 0.333 respectively for untwinned datasets, and 0.375, 0.2 for perfectly twinned datasets.

## 5 Model quality [i](#)

### 5.1 Standard geometry [i](#)

Bond lengths and bond angles in the following residue types are not validated in this section: FUC, FUL, CSO, GOL, PEG, UNX, 5HB, NAG, EDO

The Z score for a bond length (or angle) is the number of standard deviations the observed value is removed from the expected value. A bond length (or angle) with  $|Z| > 5$  is considered an outlier worth inspection. RMSZ is the root-mean-square of all Z scores of the bond lengths (or angles).

Mol	Chain	Bond lengths		Bond angles	
		RMSZ	# Z  >5	RMSZ	# Z  >5
1	A	0.44	0/4331	0.60	0/5879
1	B	0.43	0/4270	0.58	0/5796
All	All	0.43	0/8601	0.59	0/11675

Chiral center outliers are detected by calculating the chiral volume of a chiral center and verifying if the center is modelled as a planar moiety or with the opposite hand. A planarity outlier is detected by checking planarity of atoms in a peptide group, atoms in a mainchain group or atoms of a sidechain that are expected to be planar.

Mol	Chain	#Chirality outliers	#Planarity outliers
1	A	0	1

There are no bond length outliers.

There are no bond angle outliers.

There are no chirality outliers.

All (1) planarity outliers are listed below:

Mol	Chain	Res	Type	Group
1	A	155	ALA	Peptide

### 5.2 Too-close contacts [i](#)

In the following table, the Non-H and H(model) columns list the number of non-hydrogen atoms and hydrogen atoms in the chain respectively. The H(added) column lists the number of hydrogen atoms added and optimized by MolProbity. The Clashes column lists the number of clashes within the asymmetric unit, whereas Symm-Clashes lists symmetry-related clashes.

Mol	Chain	Non-H	H(model)	H(added)	Clashes	Symm-Clashes
1	A	4210	0	4103	42	1
1	B	4160	0	4034	50	1
2	C	38	0	34	0	0
2	E	38	0	34	0	0
2	G	38	0	34	0	0
3	D	28	0	25	0	0
3	F	28	0	25	1	0
3	H	28	0	24	0	0
4	I	24	0	22	0	0
5	A	28	0	26	0	0
5	B	84	0	78	1	0
6	A	29	0	0	0	0
6	B	29	0	0	0	0
7	A	18	0	24	0	0
7	B	12	0	16	1	0
8	A	4	0	6	0	0
8	B	12	0	18	0	0
9	A	3	0	0	2	0
9	B	3	0	0	1	0
10	B	10	0	10	1	0
11	B	7	0	10	2	0
12	A	118	0	0	5	0
12	B	114	0	0	2	0
All	All	9063	0	8523	95	1

The all-atom clashscore is defined as the number of clashes found per 1000 atoms (including hydrogen atoms). The all-atom clashscore for this structure is 5.

The worst 5 of 95 close contacts within the same asymmetric unit are listed below, sorted by their clash magnitude.

Atom-1	Atom-2	Interatomic distance (Å)	Clash overlap (Å)
1:B:217:PHE:O	1:B:313:LYS:NZ	2.06	0.89
1:B:12:LYS:HB2	1:B:55:ILE:HD12	1.62	0.82
1:B:109:VAL:HB	1:B:192:VAL:HG12	1.58	0.82
1:B:192:VAL:HG23	1:B:217:PHE:HA	1.62	0.81
9:A:621:UNX:UNK	9:A:623:UNX:UNK	1.26	0.77

All (1) symmetry-related close contacts are listed below. The label for Atom-2 includes the symmetry operator and encoded unit-cell translations to be applied.

Atom-1	Atom-2	Interatomic distance (Å)	Clash overlap (Å)
1:A:237:TYR:OH	1:B:453:ARG:O[1_545]	2.12	0.08

### 5.3 Torsion angles [i](#)

#### 5.3.1 Protein backbone [i](#)

In the following table, the Percentiles column shows the percent Ramachandran outliers of the chain as a percentile score with respect to all X-ray entries followed by that with respect to entries of similar resolution.

The Analysed column shows the number of residues for which the backbone conformation was analysed, and the total number of residues.

Mol	Chain	Analysed	Favoured	Allowed	Outliers	Percentiles	
1	A	527/530 (99%)	504 (96%)	23 (4%)	0	100	100
1	B	520/530 (98%)	495 (95%)	23 (4%)	2 (0%)	34	46
All	All	1047/1060 (99%)	999 (95%)	46 (4%)	2 (0%)	47	60

All (2) Ramachandran outliers are listed below:

Mol	Chain	Res	Type
1	B	54	ASP
1	B	506	GLU

#### 5.3.2 Protein sidechains [i](#)

In the following table, the Percentiles column shows the percent sidechain outliers of the chain as a percentile score with respect to all X-ray entries followed by that with respect to entries of similar resolution.

The Analysed column shows the number of residues for which the sidechain conformation was analysed, and the total number of residues.

Mol	Chain	Analysed	Rotameric	Outliers	Percentiles	
1	A	451/454 (99%)	446 (99%)	5 (1%)	73	83
1	B	442/454 (97%)	432 (98%)	10 (2%)	50	65
All	All	893/908 (98%)	878 (98%)	15 (2%)	60	75

5 of 15 residues with a non-rotameric sidechain are listed below:

Mol	Chain	Res	Type
1	B	195	PHE
1	B	496	THR
1	B	240	ARG
1	B	517	GLN
1	B	466	SER

Sometimes sidechains can be flipped to improve hydrogen bonding and reduce clashes. All (3) such sidechains are listed below:

Mol	Chain	Res	Type
1	A	311	GLN
1	B	10	ASN
1	B	397	ASN

### 5.3.3 RNA [i](#)

There are no RNA molecules in this entry.

## 5.4 Non-standard residues in protein, DNA, RNA chains [i](#)

2 non-standard protein/DNA/RNA residues are modelled in this entry.

In the following table, the Counts columns list the number of bonds (or angles) for which Mogul statistics could be retrieved, the number of bonds (or angles) that are observed in the model and the number of bonds (or angles) that are defined in the Chemical Component Dictionary. The Link column lists molecule types, if any, to which the group is linked. The Z score for a bond length (or angle) is the number of standard deviations the observed value is removed from the expected value. A bond length (or angle) with  $|Z| > 2$  is considered an outlier worth inspection. RMSZ is the root-mean-square of all Z scores of the bond lengths (or angles).

Mol	Type	Chain	Res	Link	Bond lengths			Bond angles		
					Counts	RMSZ	$\# Z  > 2$	Counts	RMSZ	$\# Z  > 2$
1	CSO	A	66	1	3,6,7	0.46	0	0,6,8	-	-
1	CSO	B	66	1	3,6,7	0.60	0	0,6,8	-	-

In the following table, the Chirals column lists the number of chiral outliers, the number of chiral centers analysed, the number of these observed in the model and the number defined in the Chemical Component Dictionary. Similar counts are reported in the Torsion and Rings columns. '-' means no outliers of that kind were identified.

Mol	Type	Chain	Res	Link	Chirals	Torsions	Rings
1	CSO	A	66	1	-	0/1/5/7	-
1	CSO	B	66	1	-	0/1/5/7	-



There are no bond length outliers.

There are no bond angle outliers.

There are no chirality outliers.

There are no torsion outliers.

There are no ring outliers.

2 monomers are involved in 2 short contacts:

Mol	Chain	Res	Type	Clashes	Symm-Clashes
1	A	66	CSO	1	0
1	B	66	CSO	1	0

## 5.5 Carbohydrates [i](#)

17 monosaccharides are modelled in this entry.

In the following table, the Counts columns list the number of bonds (or angles) for which Mogul statistics could be retrieved, the number of bonds (or angles) that are observed in the model and the number of bonds (or angles) that are defined in the Chemical Component Dictionary. The Link column lists molecule types, if any, to which the group is linked. The Z score for a bond length (or angle) is the number of standard deviations the observed value is removed from the expected value. A bond length (or angle) with  $|Z| > 2$  is considered an outlier worth inspection. RMSZ is the root-mean-square of all Z scores of the bond lengths (or angles).

Mol	Type	Chain	Res	Link	Bond lengths			Bond angles		
					Counts	RMSZ	# Z  > 2	Counts	RMSZ	# Z  > 2
2	NAG	C	1	2,1	14,14,15	0.26	0	17,19,21	0.49	0
2	NAG	C	2	2	14,14,15	0.74	1 (7%)	17,19,21	0.83	1 (5%)
2	FUC	C	3	2	10,10,11	1.91	5 (50%)	14,14,16	0.59	0
3	NAG	D	1	3,1	14,14,15	0.53	0	17,19,21	0.81	0
3	NAG	D	2	3	14,14,15	0.71	0	17,19,21	0.55	0
2	NAG	E	1	2,1	14,14,15	0.26	0	17,19,21	0.94	1 (5%)
2	NAG	E	2	2	14,14,15	0.73	1 (7%)	17,19,21	0.84	1 (5%)
2	FUC	E	3	2	10,10,11	1.89	4 (40%)	14,14,16	1.74	4 (28%)
3	NAG	F	1	3,1	14,14,15	0.26	0	17,19,21	0.65	1 (5%)
3	NAG	F	2	3	14,14,15	0.86	1 (7%)	17,19,21	0.88	1 (5%)
2	NAG	G	1	2,1	14,14,15	0.51	0	17,19,21	0.44	0
2	NAG	G	2	2	14,14,15	0.30	0	17,19,21	0.36	0
2	FUC	G	3	2	10,10,11	1.83	3 (30%)	14,14,16	1.06	1 (7%)
3	NAG	H	1	3,1	14,14,15	0.46	0	17,19,21	0.61	0
3	NAG	H	2	3	14,14,15	0.25	0	17,19,21	0.48	0
4	NAG	I	1	1,4	14,14,15	0.42	0	17,19,21	0.65	0

Mol	Type	Chain	Res	Link	Bond lengths			Bond angles		
					Counts	RMSZ	# Z  > 2	Counts	RMSZ	# Z  > 2
4	FUC	I	2	4	10,10,11	1.74	2 (20%)	14,14,16	1.03	1 (7%)

In the following table, the Chirals column lists the number of chiral outliers, the number of chiral centers analysed, the number of these observed in the model and the number defined in the Chemical Component Dictionary. Similar counts are reported in the Torsion and Rings columns. '-' means no outliers of that kind were identified.

Mol	Type	Chain	Res	Link	Chirals	Torsions	Rings
2	NAG	C	1	2,1	-	0/6/23/26	0/1/1/1
2	NAG	C	2	2	-	1/6/23/26	0/1/1/1
2	FUC	C	3	2	-	-	0/1/1/1
3	NAG	D	1	3,1	-	2/6/23/26	0/1/1/1
3	NAG	D	2	3	1/1/5/7	4/6/23/26	0/1/1/1
2	NAG	E	1	2,1	1/1/5/7	3/6/23/26	0/1/1/1
2	NAG	E	2	2	1/1/5/7	4/6/23/26	0/1/1/1
2	FUC	E	3	2	1/1/4/5	-	0/1/1/1
3	NAG	F	1	3,1	-	2/6/23/26	0/1/1/1
3	NAG	F	2	3	-	2/6/23/26	0/1/1/1
2	NAG	G	1	2,1	-	2/6/23/26	0/1/1/1
2	NAG	G	2	2	1/1/5/7	2/6/23/26	0/1/1/1
2	FUC	G	3	2	1/1/4/5	-	0/1/1/1
3	NAG	H	1	3,1	-	2/6/23/26	0/1/1/1
3	NAG	H	2	3	-	2/6/23/26	0/1/1/1
4	NAG	I	1	1,4	-	0/6/23/26	0/1/1/1
4	FUC	I	2	4	1/1/4/5	-	0/1/1/1

The worst 5 of 17 bond length outliers are listed below:

Mol	Chain	Res	Type	Atoms	Z	Observed(Å)	Ideal(Å)
2	E	3	FUC	O5-C1	-3.40	1.38	1.43
2	C	3	FUC	O5-C1	-3.21	1.38	1.43
4	I	2	FUC	O5-C1	-3.14	1.38	1.43
2	G	3	FUC	O5-C1	-3.11	1.38	1.43
3	F	2	NAG	O5-C1	2.98	1.48	1.43

The worst 5 of 11 bond angle outliers are listed below:

Mol	Chain	Res	Type	Atoms	Z	Observed(°)	Ideal(°)
2	E	3	FUC	O5-C1-C2	-3.76	104.97	110.77

*Continued on next page...*

*Continued from previous page...*

Mol	Chain	Res	Type	Atoms	Z	Observed(°)	Ideal(°)
2	E	2	NAG	C1-O5-C5	3.11	116.41	112.19
2	C	2	NAG	C1-O5-C5	3.02	116.29	112.19
3	F	2	NAG	C1-O5-C5	3.02	116.28	112.19
2	E	3	FUC	C3-C4-C5	2.74	114.04	109.77

5 of 7 chirality outliers are listed below:

Mol	Chain	Res	Type	Atom
2	E	1	NAG	C1
2	E	2	NAG	C1
2	E	3	FUC	C1
2	G	2	NAG	C1
2	G	3	FUC	C1

5 of 26 torsion outliers are listed below:

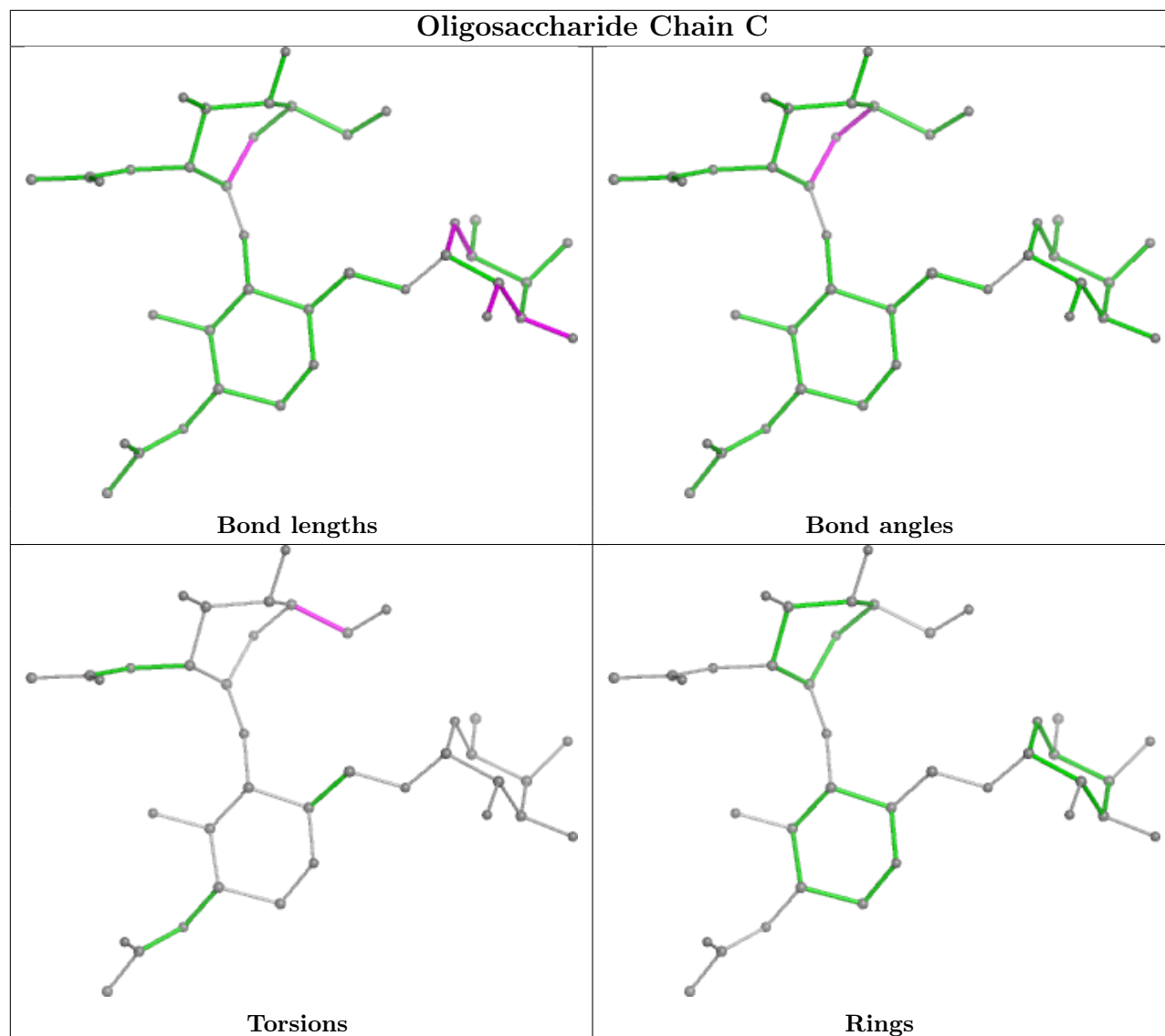
Mol	Chain	Res	Type	Atoms
2	E	2	NAG	C4-C5-C6-O6
2	E	1	NAG	O5-C5-C6-O6
2	G	1	NAG	O5-C5-C6-O6
3	H	1	NAG	C4-C5-C6-O6
2	E	2	NAG	O5-C5-C6-O6

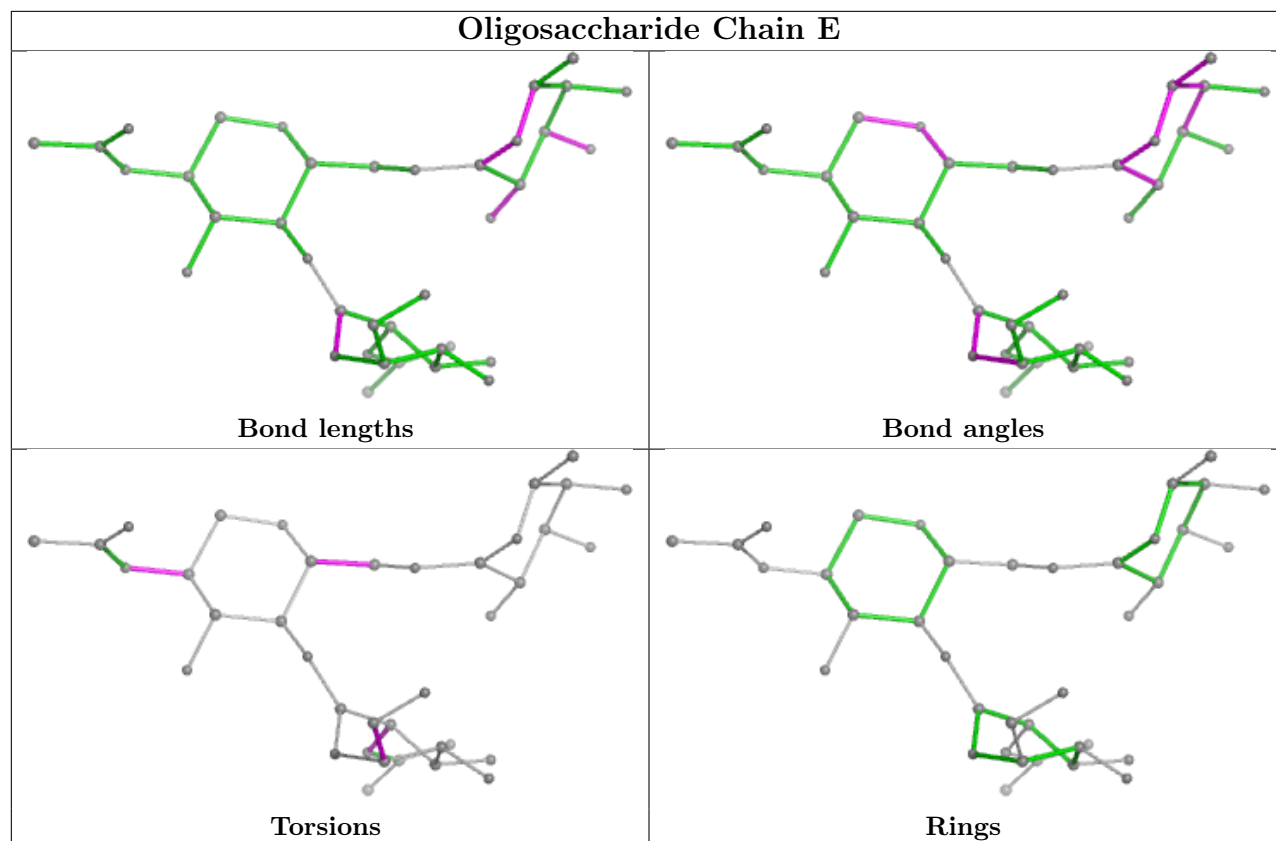
There are no ring outliers.

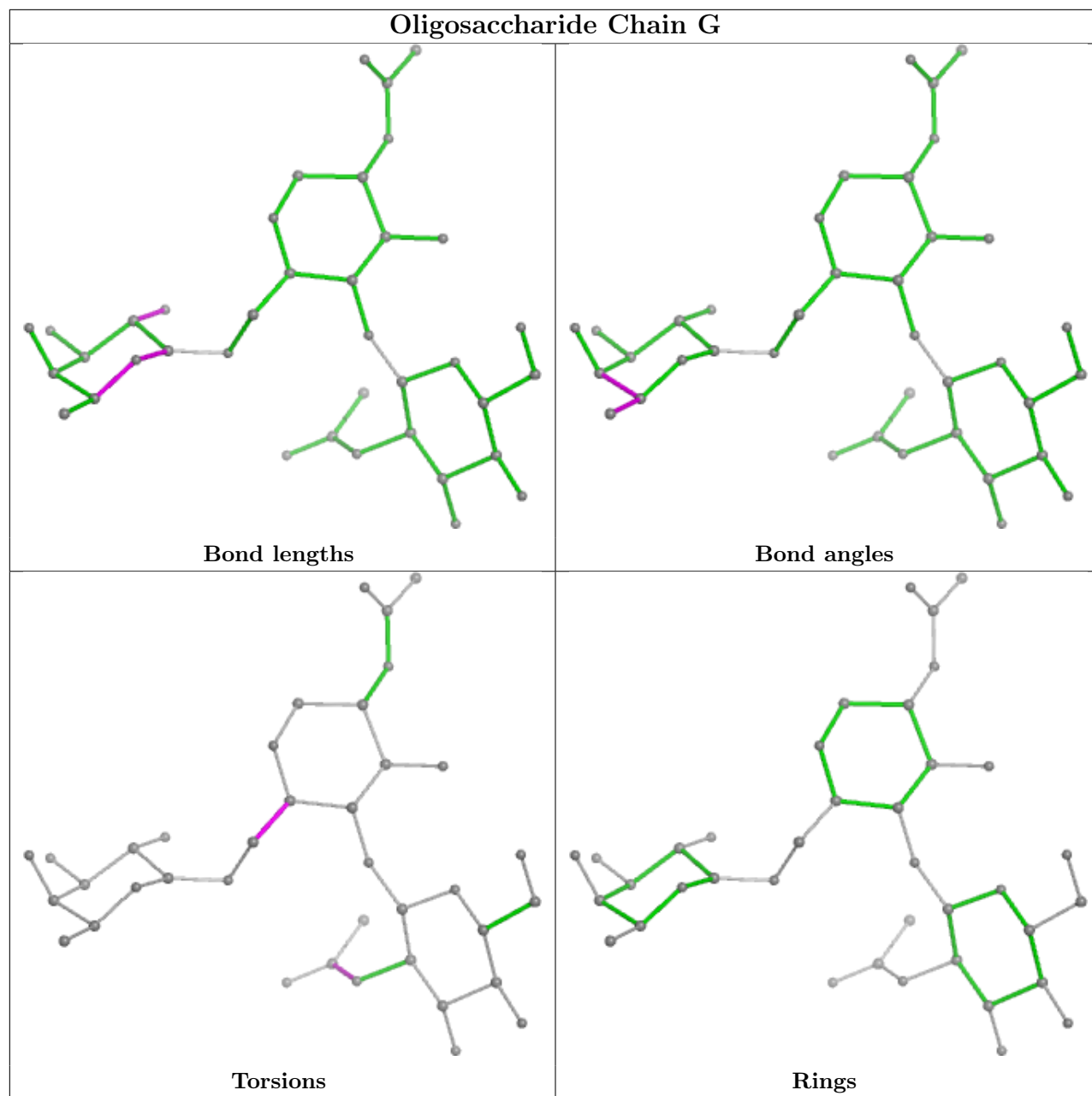
1 monomer is involved in 1 short contact:

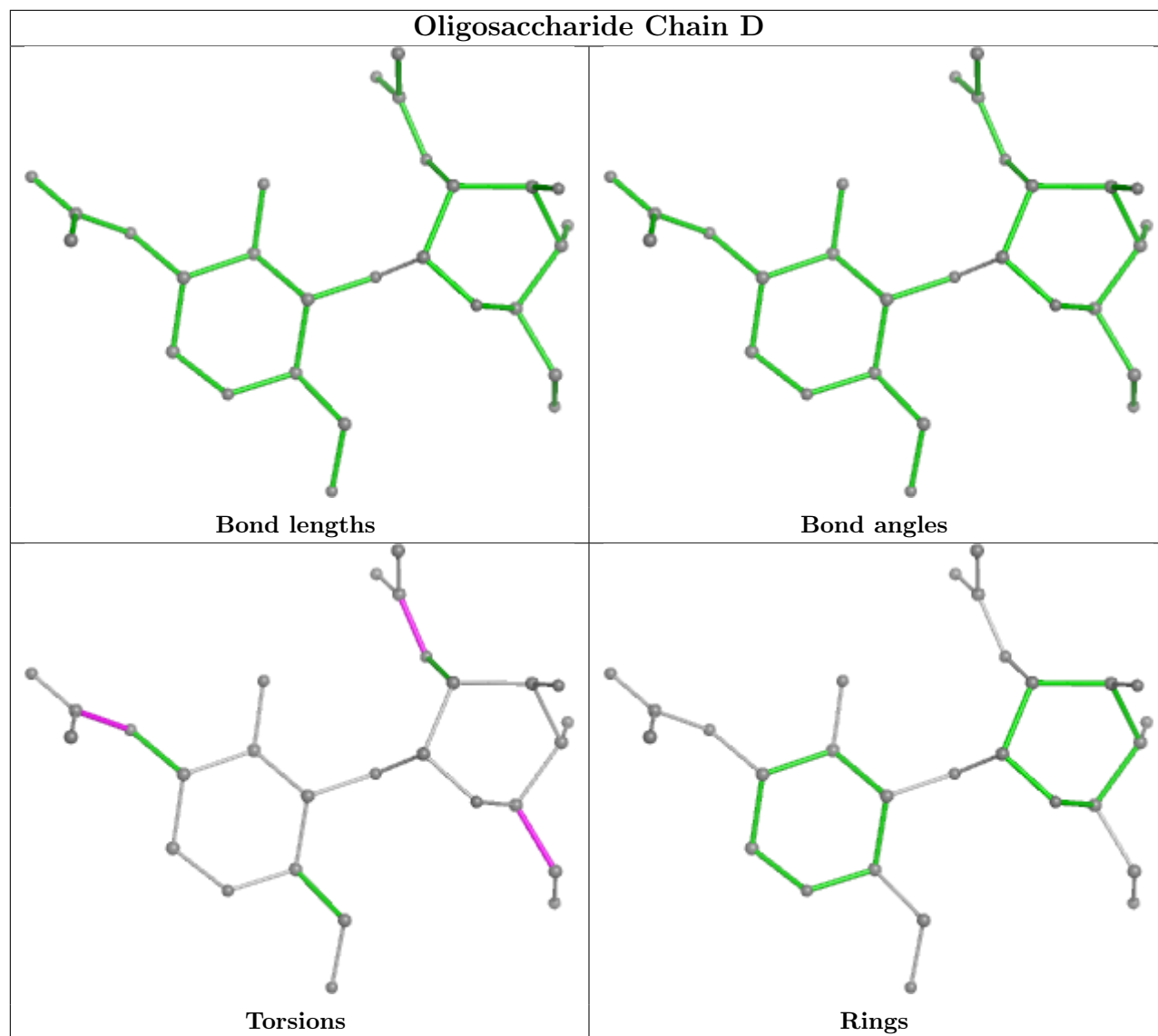
Mol	Chain	Res	Type	Clashes	Symm-Clashes
3	F	2	NAG	1	0

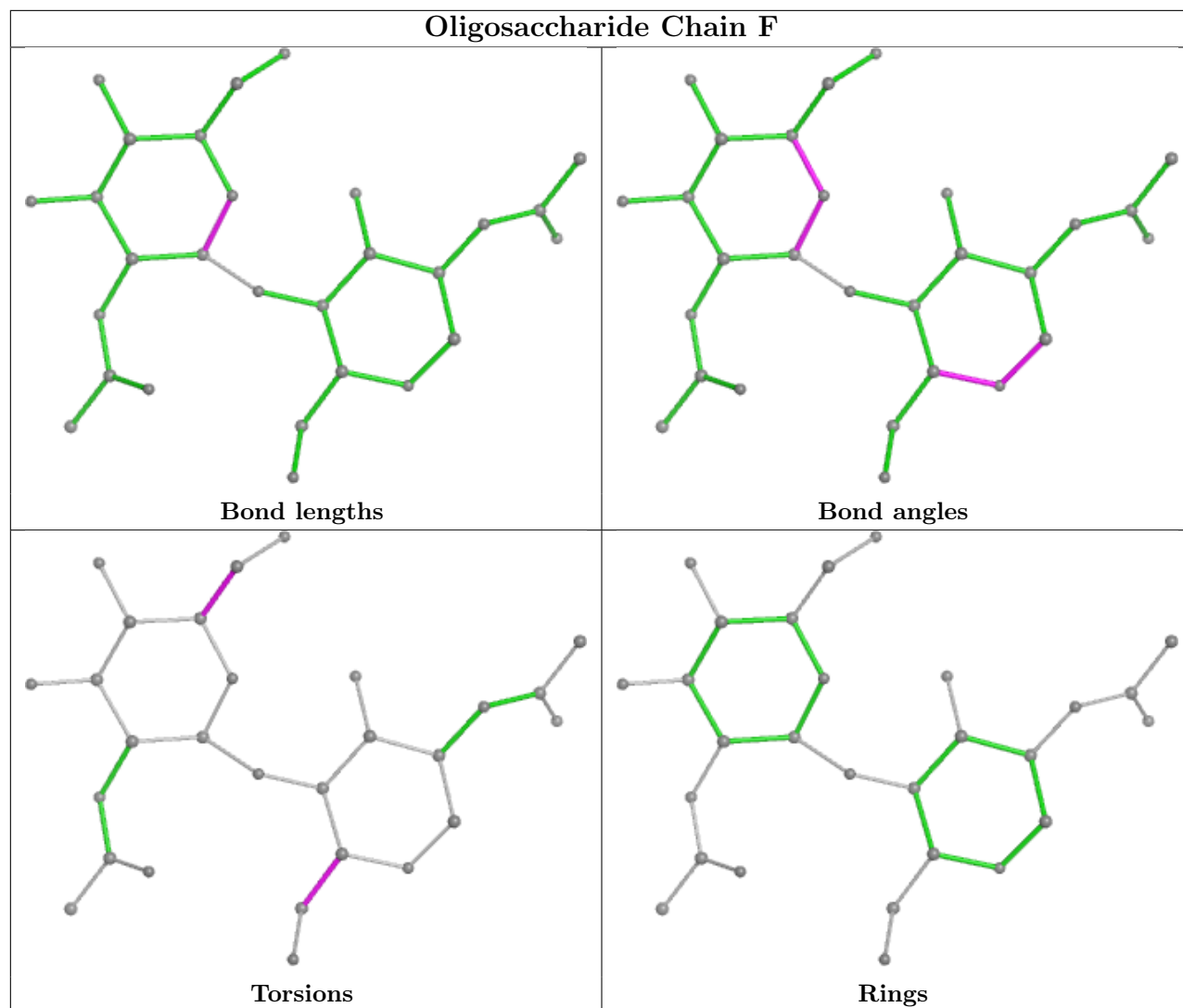
The following is a two-dimensional graphical depiction of Mogul quality analysis of bond lengths, bond angles, torsion angles, and ring geometry for oligosaccharide.



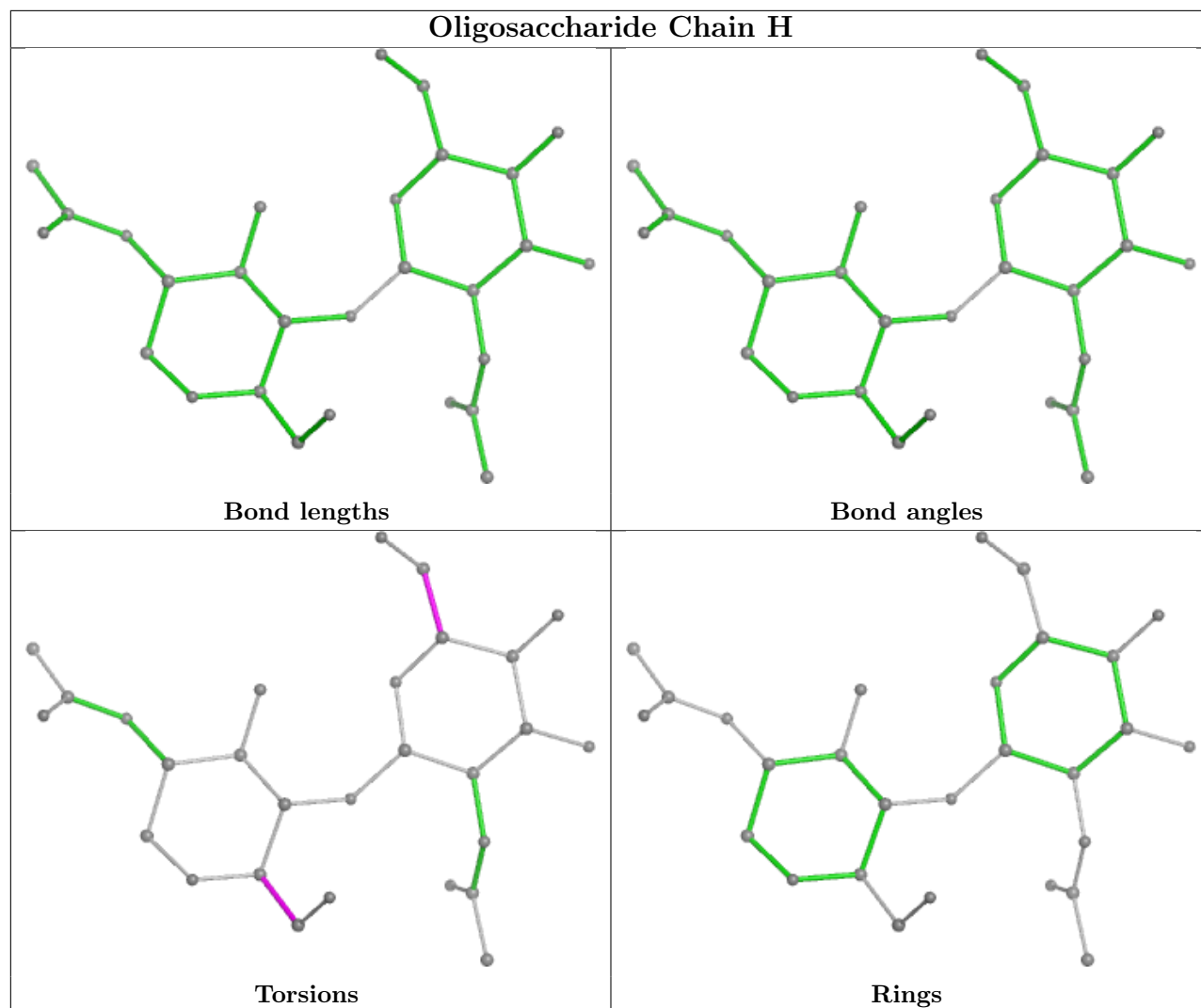


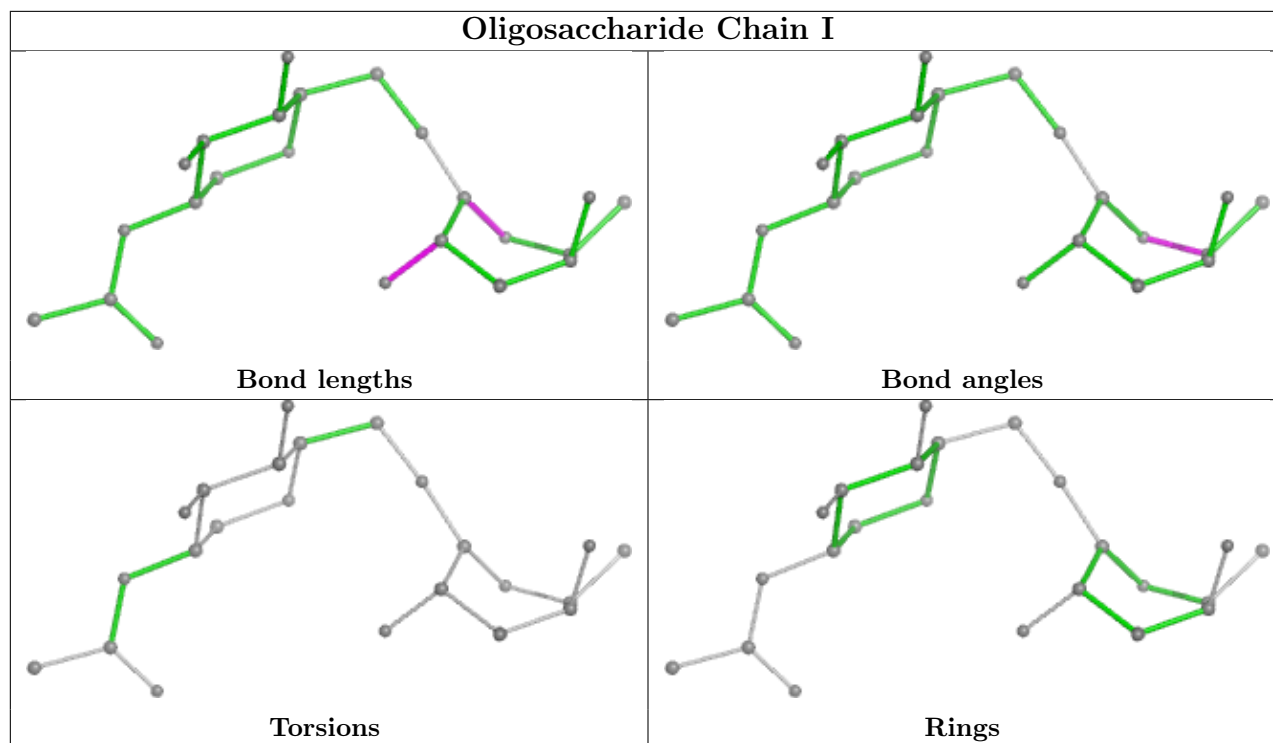












## 5.6 Ligand geometry [i](#)

Of 27 ligands modelled in this entry, 6 are unknown - leaving 21 for Mogul analysis.

In the following table, the Counts columns list the number of bonds (or angles) for which Mogul statistics could be retrieved, the number of bonds (or angles) that are observed in the model and the number of bonds (or angles) that are defined in the Chemical Component Dictionary. The Link column lists molecule types, if any, to which the group is linked. The Z score for a bond length (or angle) is the number of standard deviations the observed value is removed from the expected value. A bond length (or angle) with  $|Z| > 2$  is considered an outlier worth inspection. RMSZ is the root-mean-square of all Z scores of the bond lengths (or angles).

Mol	Type	Chain	Res	Link	Bond lengths			Bond angles		
					Counts	RMSZ	# $ Z  > 2$	Counts	RMSZ	# $ Z  > 2$
7	GOL	A	618	-	5,5,5	0.53	0	5,5,5	0.52	0
11	PEG	B	621	-	6,6,6	0.47	0	5,5,5	0.90	0
5	NAG	B	607	1	14,14,15	0.43	0	17,19,21	0.78	1 (5%)
8	EDO	B	616	-	3,3,3	1.76	1 (33%)	2,2,2	1.56	0
6	5HB	A	616	-	31,32,32	2.87	3 (9%)	41,45,45	1.59	4 (9%)
5	NAG	B	608	1	14,14,15	0.50	0	17,19,21	0.62	1 (5%)
8	EDO	A	620	-	3,3,3	0.66	0	2,2,2	0.43	0
5	NAG	B	611	1	14,14,15	0.51	0	17,19,21	1.02	1 (5%)
5	NAG	A	601	1	14,14,15	0.64	0	17,19,21	0.47	0
7	GOL	A	617	-	5,5,5	0.34	0	5,5,5	0.43	0
5	NAG	B	603	1	14,14,15	0.41	0	17,19,21	1.43	3 (17%)

Mol	Type	Chain	Res	Link	Bond lengths			Bond angles		
					Counts	RMSZ	# Z  > 2	Counts	RMSZ	# Z  > 2
7	GOL	A	619	-	5,5,5	0.46	0	5,5,5	0.22	0
6	5HB	B	612	-	31,32,32	2.85	4 (12%)	41,45,45	1.72	4 (9%)
7	GOL	B	613	-	5,5,5	0.36	0	5,5,5	0.27	0
8	EDO	B	617	-	3,3,3	1.30	0	2,2,2	1.34	0
8	EDO	B	615	-	3,3,3	0.61	0	2,2,2	0.06	0
5	NAG	B	602	1	14,14,15	0.45	0	17,19,21	0.44	0
5	NAG	A	610	1	14,14,15	0.53	0	17,19,21	1.05	1 (5%)
5	NAG	B	601	1	14,14,15	0.93	1 (7%)	17,19,21	1.10	1 (5%)
7	GOL	B	614	-	5,5,5	0.40	0	5,5,5	0.69	0
10	FUL	B	606	-	10,10,11	1.76	3 (30%)	14,14,16	1.88	2 (14%)

In the following table, the Chirals column lists the number of chiral outliers, the number of chiral centers analysed, the number of these observed in the model and the number defined in the Chemical Component Dictionary. Similar counts are reported in the Torsion and Rings columns. '-' means no outliers of that kind were identified.

Mol	Type	Chain	Res	Link	Chirals	Torsions	Rings
7	GOL	A	618	-	-	4/4/4/4	-
11	PEG	B	621	-	-	1/4/4/4	-
5	NAG	B	607	1	-	2/6/23/26	0/1/1/1
8	EDO	B	616	-	-	0/1/1/1	-
6	5HB	A	616	-	-	9/20/30/30	0/4/4/4
5	NAG	B	608	1	-	2/6/23/26	0/1/1/1
8	EDO	A	620	-	-	1/1/1/1	-
5	NAG	B	611	1	1/1/5/7	2/6/23/26	0/1/1/1
5	NAG	A	601	1	-	2/6/23/26	0/1/1/1
7	GOL	A	617	-	-	0/4/4/4	-
5	NAG	B	603	1	-	2/6/23/26	0/1/1/1
7	GOL	A	619	-	-	2/4/4/4	-
6	5HB	B	612	-	-	14/20/30/30	0/4/4/4
7	GOL	B	613	-	-	0/4/4/4	-
8	EDO	B	617	-	-	0/1/1/1	-
8	EDO	B	615	-	-	0/1/1/1	-
5	NAG	B	602	1	-	3/6/23/26	0/1/1/1
5	NAG	A	610	1	1/1/5/7	4/6/23/26	0/1/1/1
5	NAG	B	601	1	-	3/6/23/26	0/1/1/1
7	GOL	B	614	-	-	2/4/4/4	-
10	FUL	B	606	-	-	-	0/1/1/1

The worst 5 of 12 bond length outliers are listed below:

Mol	Chain	Res	Type	Atoms	Z	Observed(Å)	Ideal(Å)
6	A	616	5HB	O22-S20	9.98	1.54	1.43
6	B	612	5HB	O21-S20	9.41	1.54	1.43
6	A	616	5HB	O21-S20	9.41	1.54	1.43
6	B	612	5HB	O22-S20	9.19	1.53	1.43
6	A	616	5HB	C12-C13	-6.98	1.38	1.51

The worst 5 of 18 bond angle outliers are listed below:

Mol	Chain	Res	Type	Atoms	Z	Observed(°)	Ideal(°)
6	B	612	5HB	O21-S20-N05	6.32	114.94	107.05
6	A	616	5HB	O21-S20-N05	5.81	114.30	107.05
6	B	612	5HB	O22-S20-O21	-5.54	110.54	119.52
10	B	606	FUL	C1-C2-C3	5.37	116.26	109.67
6	A	616	5HB	O22-S20-O21	-4.71	111.89	119.52

All (2) chirality outliers are listed below:

Mol	Chain	Res	Type	Atom
5	A	610	NAG	C1
5	B	611	NAG	C1

5 of 53 torsion outliers are listed below:

Mol	Chain	Res	Type	Atoms
5	B	603	NAG	C1-C2-N2-C7
6	A	616	5HB	C07-C06-N05-S20
6	A	616	5HB	C04-N05-S20-C23
6	B	612	5HB	C07-C06-N05-S20
6	B	612	5HB	N05-C06-C07-C08

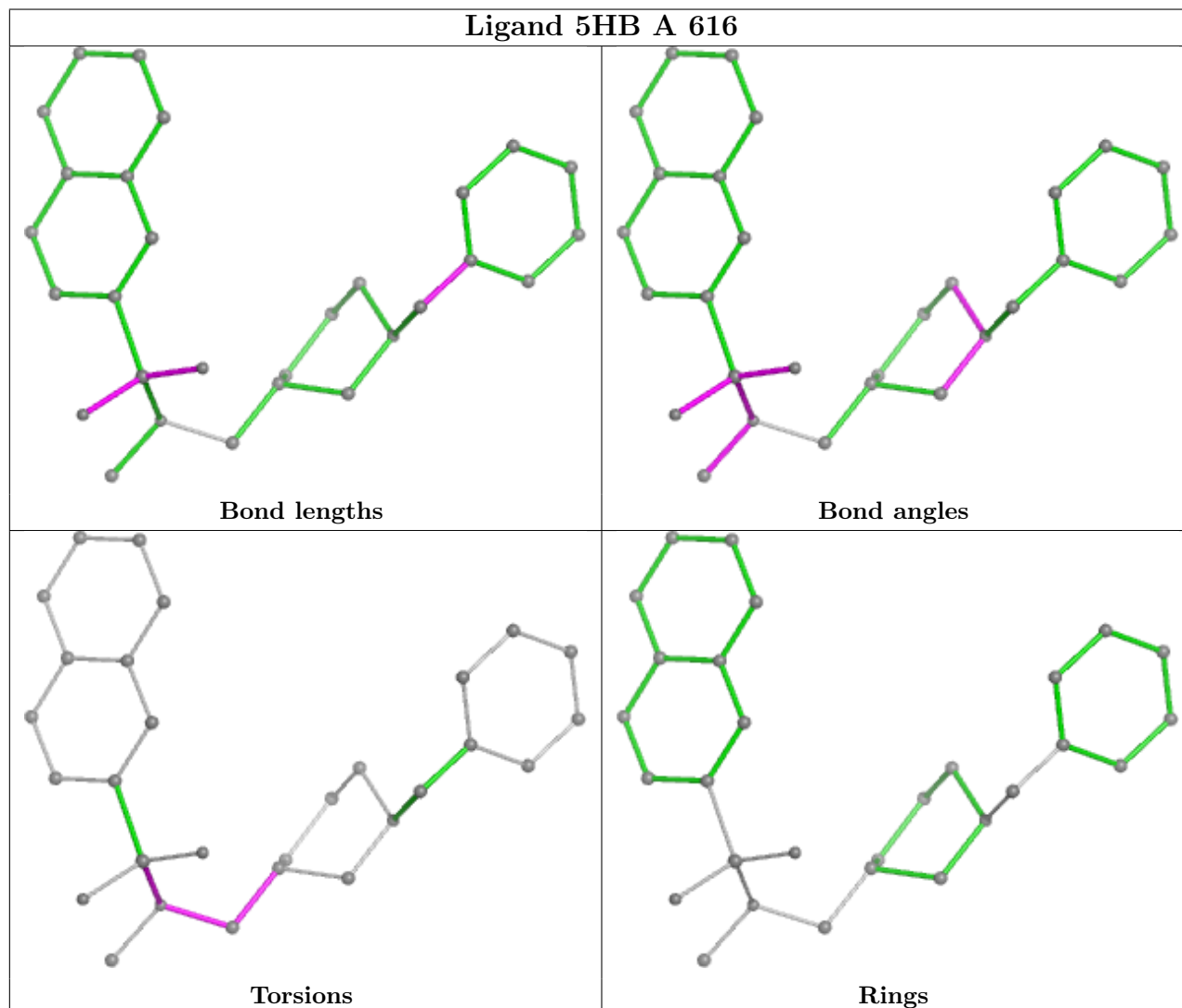
There are no ring outliers.

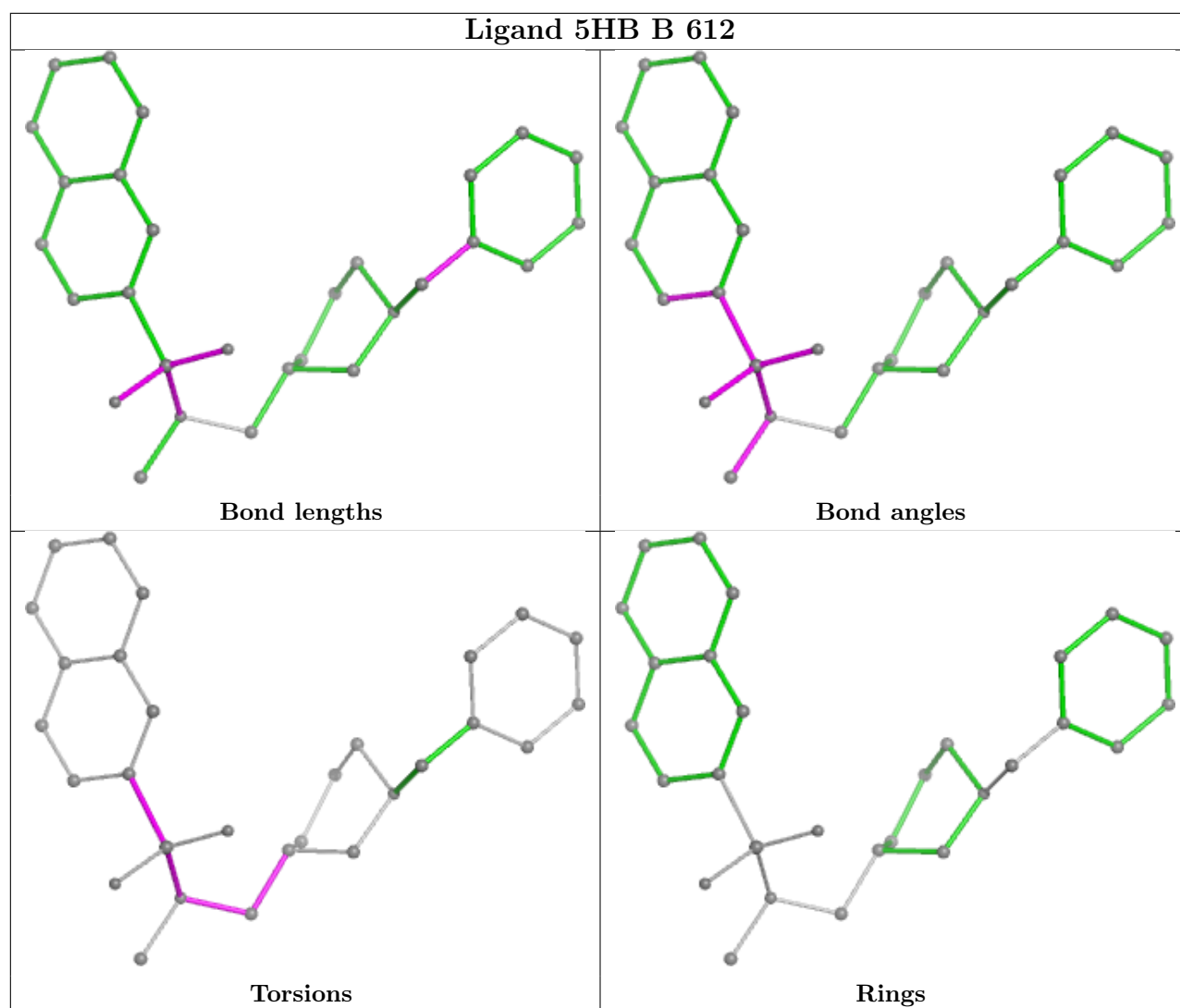
4 monomers are involved in 5 short contacts:

Mol	Chain	Res	Type	Clashes	Symm-Clashes
11	B	621	PEG	2	0
5	B	608	NAG	1	0
7	B	614	GOL	1	0
10	B	606	FUL	1	0

The following is a two-dimensional graphical depiction of Mogul quality analysis of bond lengths, bond angles, torsion angles, and ring geometry for all instances of the Ligand of Interest. In

addition, ligands with molecular weight  $> 250$  and outliers as shown on the validation Tables will also be included. For torsion angles, if less than 5% of the Mogul distribution of torsion angles is within 10 degrees of the torsion angle in question, then that torsion angle is considered an outlier. Any bond that is central to one or more torsion angles identified as an outlier by Mogul will be highlighted in the graph. For rings, the root-mean-square deviation (RMSD) between the ring in question and similar rings identified by Mogul is calculated over all ring torsion angles. If the average RMSD is greater than 60 degrees and the minimal RMSD between the ring in question and any Mogul-identified rings is also greater than 60 degrees, then that ring is considered an outlier. The outliers are highlighted in purple. The color gray indicates Mogul did not find sufficient equivalents in the CSD to analyse the geometry.





## 5.7 Other polymers [\(i\)](#)

There are no such residues in this entry.

## 5.8 Polymer linkage issues [\(i\)](#)

There are no chain breaks in this entry.

## 6 Fit of model and data [i](#)

### 6.1 Protein, DNA and RNA chains [i](#)

In the following table, the column labelled ‘#RSRZ > 2’ contains the number (and percentage) of RSRZ outliers, followed by percent RSRZ outliers for the chain as percentile scores relative to all X-ray entries and entries of similar resolution. The OWAB column contains the minimum, median, 95<sup>th</sup> percentile and maximum values of the occupancy-weighted average B-factor per residue. The column labelled ‘Q < 0.9’ lists the number of (and percentage) of residues with an average occupancy less than 0.9.

Mol	Chain	Analysed	<RSRZ>	#RSRZ>2	OWAB(Å <sup>2</sup> )	Q<0.9
1	A	526/530 (99%)	-0.12	3 (0%) 89 92	28, 50, 82, 133	0
1	B	524/530 (98%)	-0.01	7 (1%) 77 82	32, 53, 93, 149	1 (0%)
All	All	1050/1060 (99%)	-0.06	10 (0%) 82 86	28, 52, 88, 149	1 (0%)

The worst 5 of 10 RSRZ outliers are listed below:

Mol	Chain	Res	Type	RSRZ
1	B	237	TYR	3.2
1	B	52	TRP	2.7
1	B	282	TYR	2.6
1	A	237	TYR	2.4
1	B	101	ALA	2.4

### 6.2 Non-standard residues in protein, DNA, RNA chains [i](#)

In the following table, the Atoms column lists the number of modelled atoms in the group and the number defined in the chemical component dictionary. The B-factors column lists the minimum, median, 95<sup>th</sup> percentile and maximum values of B factors of atoms in the group. The column labelled ‘Q < 0.9’ lists the number of atoms with occupancy less than 0.9.

Mol	Type	Chain	Res	Atoms	RSCC	RSR	B-factors(Å <sup>2</sup> )	Q<0.9
1	CSO	B	66	7/8	0.97	0.17	36,38,56,57	0
1	CSO	A	66	7/8	0.99	0.11	43,46,56,57	0

### 6.3 Carbohydrates [i](#)

In the following table, the Atoms column lists the number of modelled atoms in the group and the number defined in the chemical component dictionary. The B-factors column lists the minimum, median, 95<sup>th</sup> percentile and maximum values of B factors of atoms in the group. The column labelled ‘Q < 0.9’ lists the number of atoms with occupancy less than 0.9.

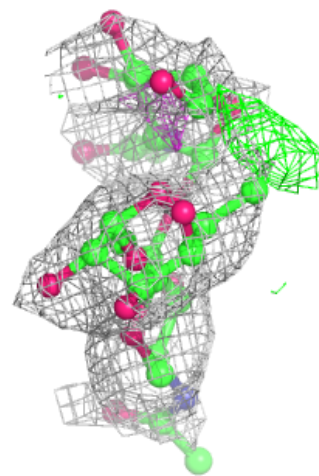
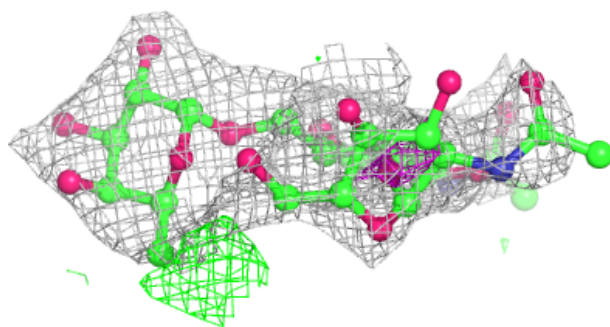
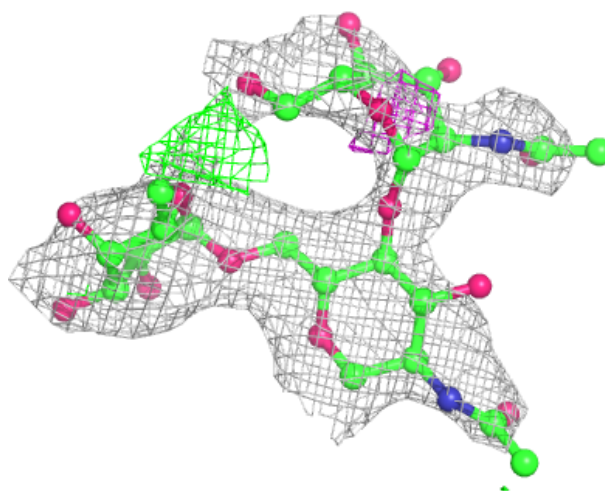
Mol	Type	Chain	Res	Atoms	RSCC	RSR	B-factors( $\text{\AA}^2$ )	Q<0.9
4	NAG	I	1	14/15	0.61	0.33	100,108,119,126	0
2	NAG	C	2	14/15	0.63	0.38	117,119,123,124	0
3	NAG	H	2	14/15	0.71	0.37	105,114,119,121	0
2	FUC	G	3	10/11	0.72	0.37	114,117,119,120	0
2	NAG	E	2	14/15	0.75	0.51	126,129,137,139	0
3	NAG	F	2	14/15	0.77	0.24	73,83,90,93	0
2	NAG	E	1	14/15	0.78	0.28	106,116,118,124	0
4	FUC	I	2	10/11	0.79	0.27	129,131,133,133	0
2	NAG	G	2	14/15	0.80	0.49	127,131,133,133	0
2	NAG	C	1	14/15	0.81	0.25	95,101,106,112	0
3	NAG	D	2	14/15	0.81	0.36	100,106,115,115	0
2	NAG	G	1	14/15	0.82	0.23	102,113,116,122	0
2	FUC	E	3	10/11	0.85	0.41	111,114,115,116	0
3	NAG	F	1	14/15	0.89	0.16	65,73,78,78	0
2	FUC	C	3	10/11	0.90	0.24	103,108,111,113	0
3	NAG	H	1	14/15	0.92	0.29	86,96,108,111	0
3	NAG	D	1	14/15	0.92	0.21	68,76,83,92	0

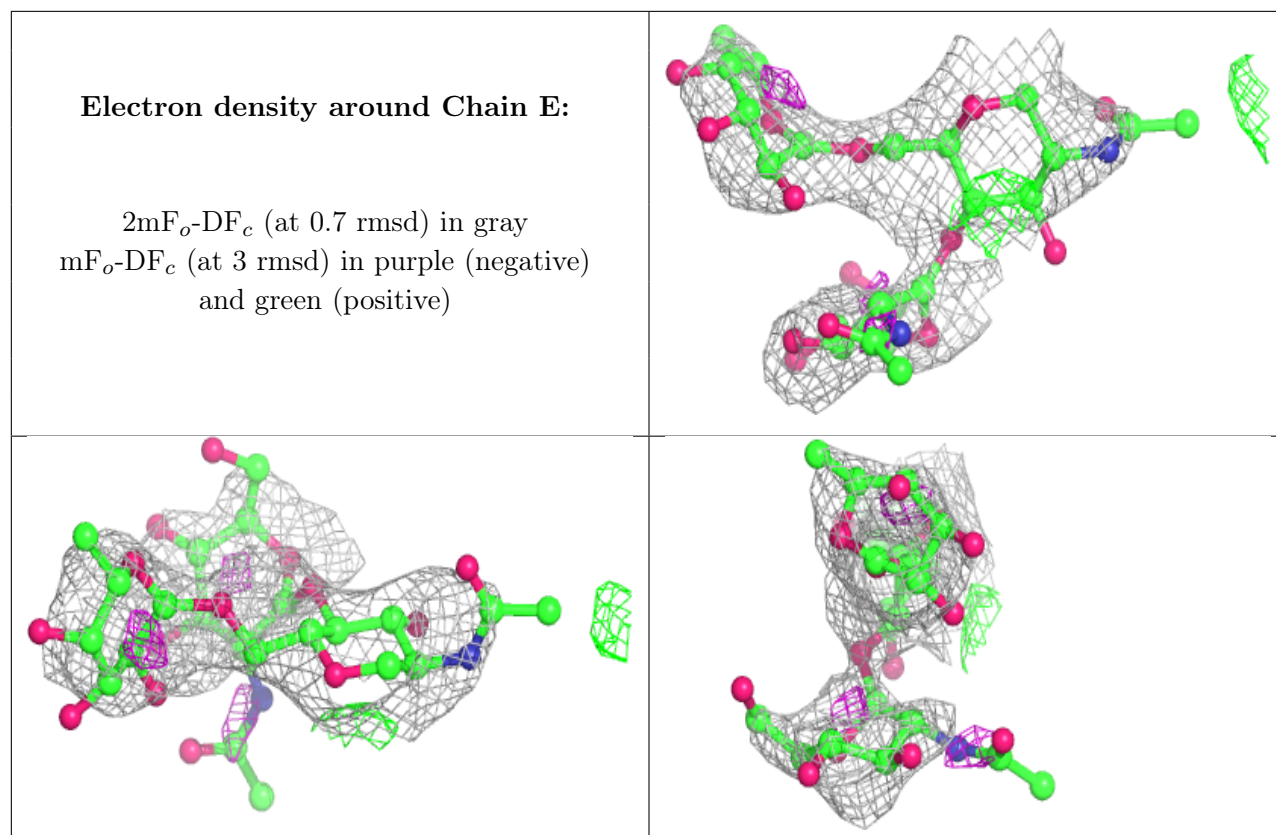
The following is a graphical depiction of the model fit to experimental electron density for oligosaccharide. Each fit is shown from different orientation to approximate a three-dimensional view.



**Electron density around Chain C:**

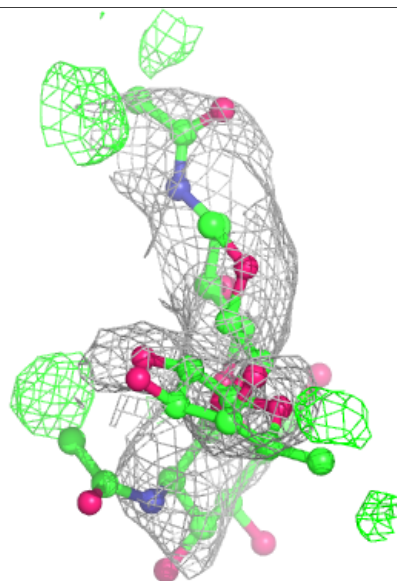
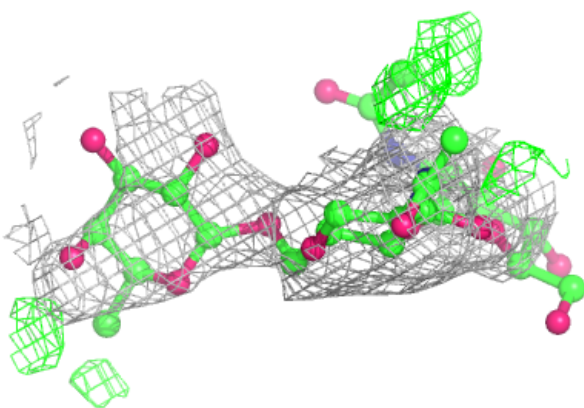
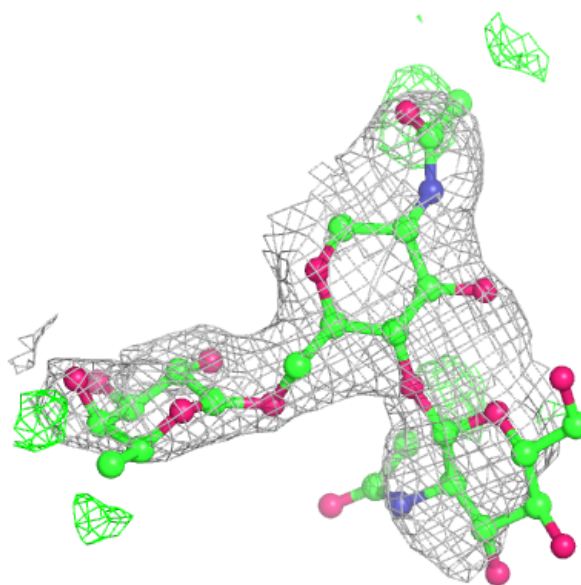
$2mF_o-DF_c$  (at 0.7 rmsd) in gray  
 $mF_o-DF_c$  (at 3 rmsd) in purple (negative)  
and green (positive)





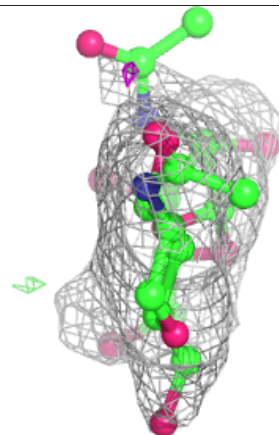
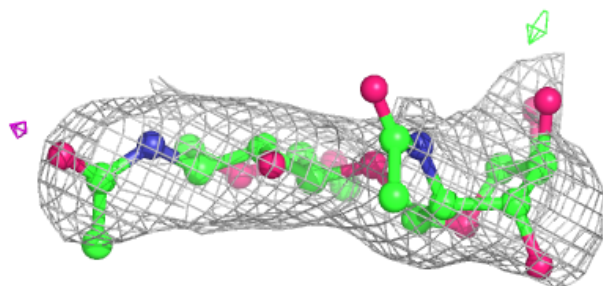
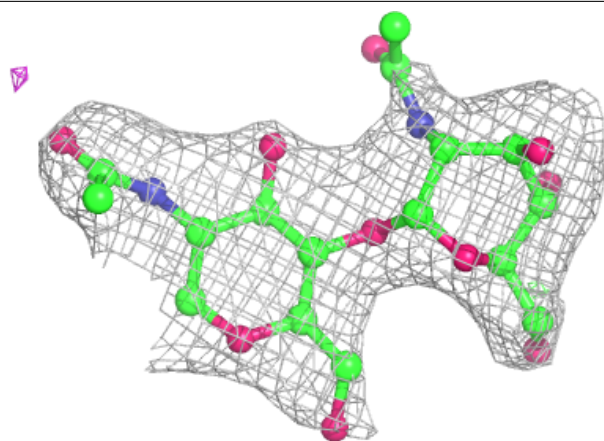
**Electron density around Chain G:**

$2mF_o-DF_c$  (at 0.7 rmsd) in gray  
 $mF_o-DF_c$  (at 3 rmsd) in purple (negative)  
and green (positive)



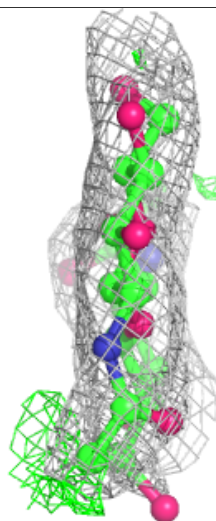
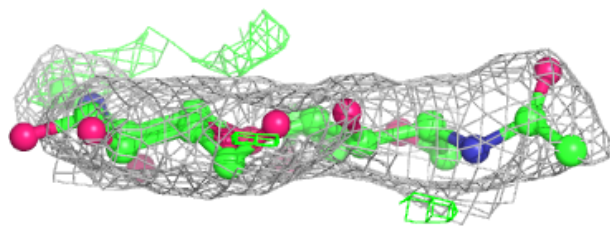
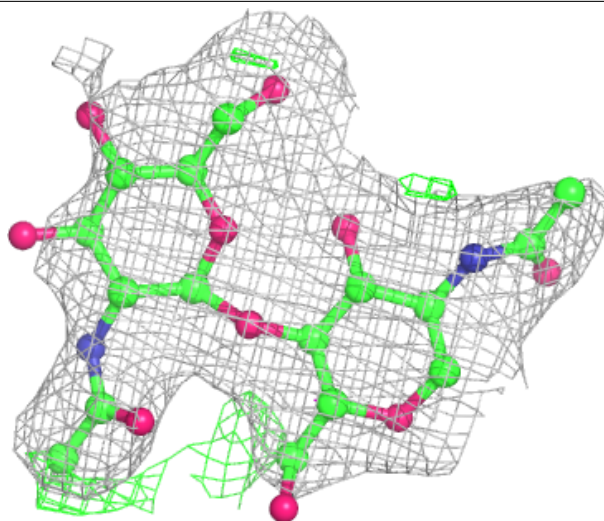
**Electron density around Chain D:**

$2mF_o-DF_c$  (at 0.7 rmsd) in gray  
 $mF_o-DF_c$  (at 3 rmsd) in purple (negative)  
and green (positive)



**Electron density around Chain F:**

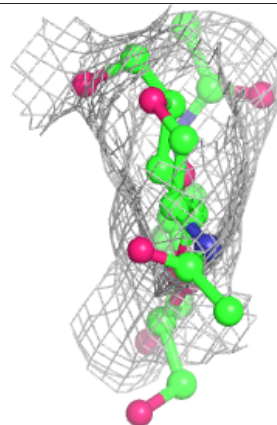
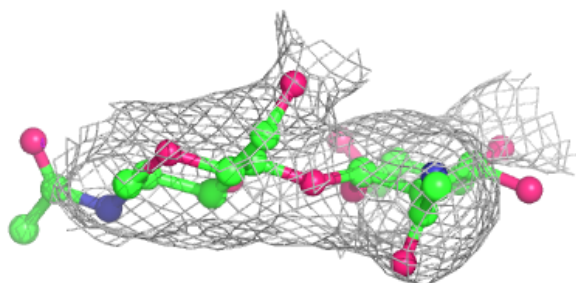
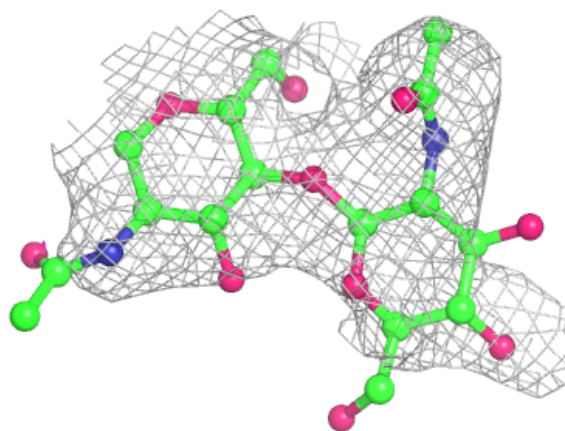
$2mF_o-DF_c$  (at 0.7 rmsd) in gray  
 $mF_o-DF_c$  (at 3 rmsd) in purple (negative)  
and green (positive)



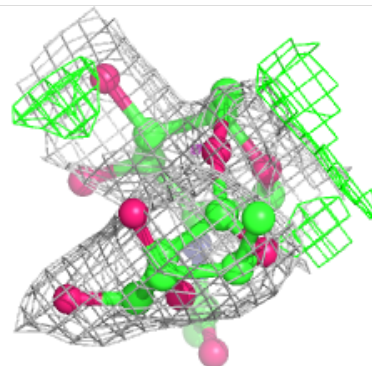
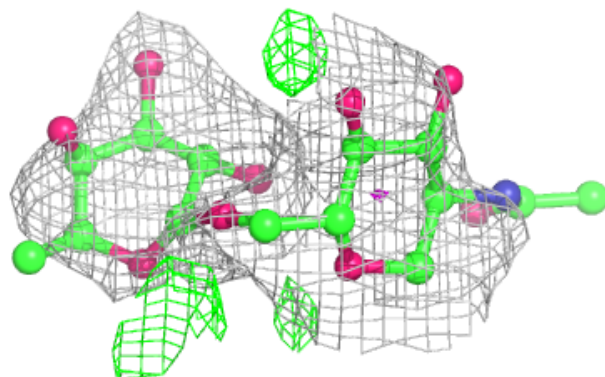
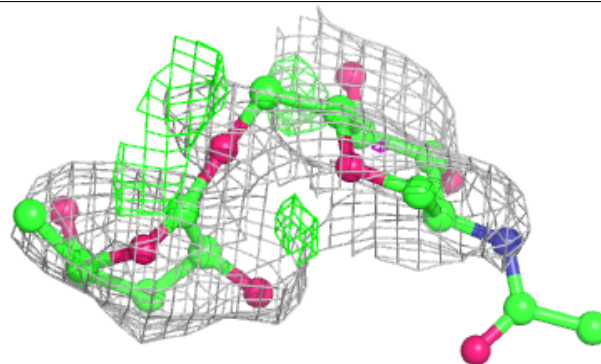


**Electron density around Chain H:**

$2mF_o-DF_c$  (at 0.7 rmsd) in gray  
 $mF_o-DF_c$  (at 3 rmsd) in purple (negative)  
and green (positive)

**Electron density around Chain I:**

$2mF_o-DF_c$  (at 0.7 rmsd) in gray  
 $mF_o-DF_c$  (at 3 rmsd) in purple (negative)  
and green (positive)



## 6.4 Ligands

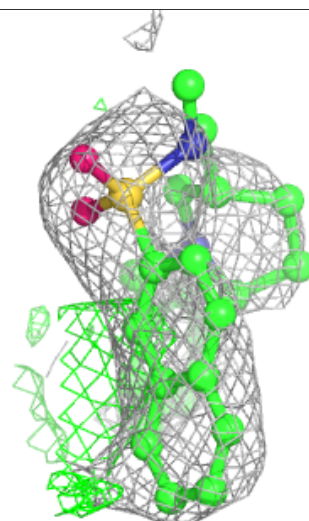
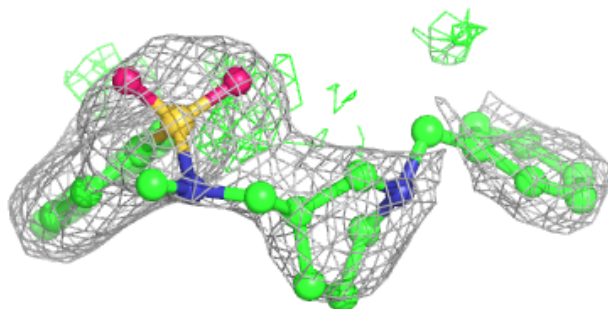
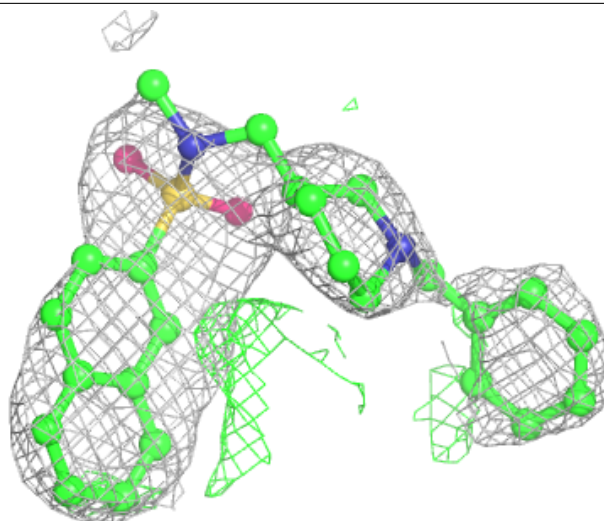
In the following table, the Atoms column lists the number of modelled atoms in the group and the number defined in the chemical component dictionary. The B-factors column lists the minimum, median, 95<sup>th</sup> percentile and maximum values of B factors of atoms in the group. The column labelled 'Q< 0.9' lists the number of atoms with occupancy less than 0.9.

Mol	Type	Chain	Res	Atoms	RSCC	RSR	B-factors(Å <sup>2</sup> )	Q<0.9
5	NAG	B	601	14/15	0.65	0.30	105,114,121,122	0
5	NAG	B	602	14/15	0.67	0.24	96,113,122,123	0
5	NAG	A	601	14/15	0.74	0.31	76,91,96,99	0
8	EDO	B	615	4/4	0.76	0.20	67,71,75,76	0
5	NAG	B	607	14/15	0.78	0.17	103,108,112,113	0
7	GOL	B	614	6/6	0.79	0.35	78,83,87,93	0
5	NAG	B	611	14/15	0.81	0.28	96,111,115,117	0
5	NAG	B	603	14/15	0.82	0.35	97,100,109,110	0
11	PEG	B	621	7/7	0.82	0.21	75,83,87,87	0
5	NAG	A	610	14/15	0.83	0.21	74,79,84,84	0
10	FUL	B	606	10/11	0.85	0.36	96,103,105,105	0
8	EDO	B	616	4/4	0.85	0.34	82,83,84,87	0
7	GOL	A	618	6/6	0.86	0.30	64,73,77,78	0
8	EDO	A	620	4/4	0.87	0.14	75,77,78,78	0
7	GOL	A	617	6/6	0.88	0.23	76,79,81,82	0
6	5HB	B	612	29/29	0.89	0.25	60,82,89,89	0
7	GOL	A	619	6/6	0.89	0.28	78,83,87,91	0
6	5HB	A	616	29/29	0.90	0.24	55,90,95,95	0
5	NAG	B	608	14/15	0.91	0.28	67,74,82,83	0
7	GOL	B	613	6/6	0.93	0.19	60,65,74,77	0
8	EDO	B	617	4/4	0.93	0.11	80,81,83,84	0
9	UNX	B	620	1/1	0.96	0.61	64,64,64,64	0
9	UNX	A	621	1/1	0.96	0.48	82,82,82,82	0
9	UNX	B	618	1/1	0.96	0.69	62,62,62,62	0
9	UNX	A	623	1/1	0.97	0.52	66,66,66,66	0
9	UNX	B	619	1/1	0.98	1.09	73,73,73,73	0
9	UNX	A	622	1/1	0.98	0.71	65,65,65,65	0

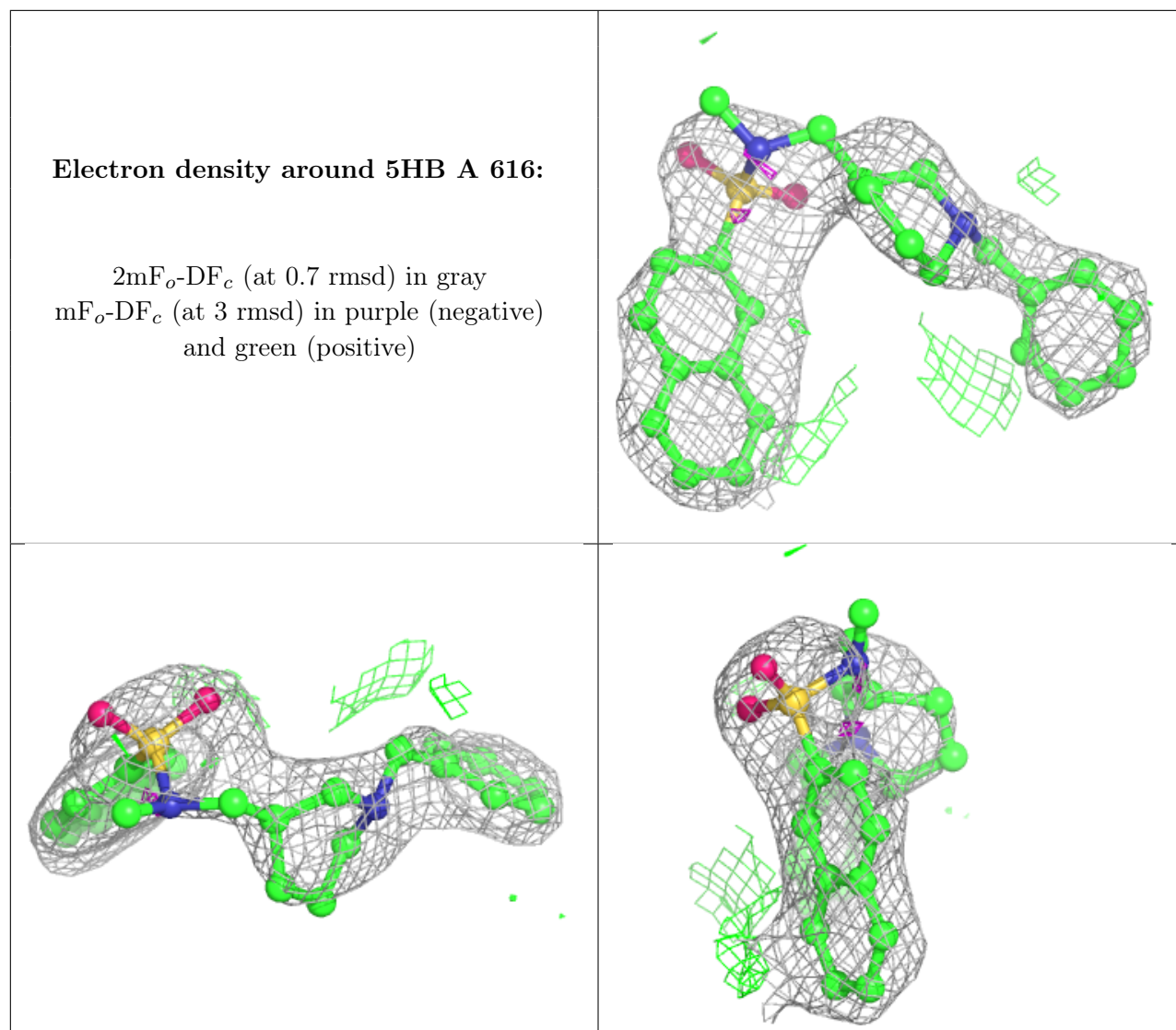
The following is a graphical depiction of the model fit to experimental electron density of all instances of the Ligand of Interest. In addition, ligands with molecular weight > 250 and outliers as shown on the geometry validation Tables will also be included. Each fit is shown from different orientation to approximate a three-dimensional view.

**Electron density around 5HB B 612:**

$2mF_o-DF_c$  (at 0.7 rmsd) in gray  
 $mF_o-DF_c$  (at 3 rmsd) in purple (negative)  
and green (positive)







## 6.5 Other polymers [i](#)

There are no such residues in this entry.