



# Full wwPDB X-ray Structure Validation Report ⓘ

Oct 22, 2023 – 07:23 AM EDT

PDB ID : 3DTG  
Title : Structural analysis of mycobacterial branched chain aminotransferase- implications for inhibitor design  
Authors : Castell, A.; Unge, T.  
Deposited on : 2008-07-15  
Resolution : 1.90 Å(reported)

This is a Full wwPDB X-ray Structure Validation Report for a publicly released PDB entry.

We welcome your comments at [validation@mail.wwpdb.org](mailto:validation@mail.wwpdb.org)

A user guide is available at

<https://www.wwpdb.org/validation/2017/XrayValidationReportHelp>

with specific help available everywhere you see the ⓘ symbol.

The types of validation reports are described at

<http://www.wwpdb.org/validation/2017/FAQs#types>.

---

The following versions of software and data (see [references ⓘ](#)) were used in the production of this report:

MolProbity : 4.02b-467  
Mogul : 1.8.5 (274361), CSD as541be (2020)  
Xtriage (Phenix) : 1.13  
EDS : 2.36  
Percentile statistics : 20191225.v01 (using entries in the PDB archive December 25th 2019)  
Refmac : 5.8.0158  
CCP4 : 7.0.044 (Gargrove)  
Ideal geometry (proteins) : Engh & Huber (2001)  
Ideal geometry (DNA, RNA) : Parkinson et al. (1996)  
Validation Pipeline (wwPDB-VP) : 2.36

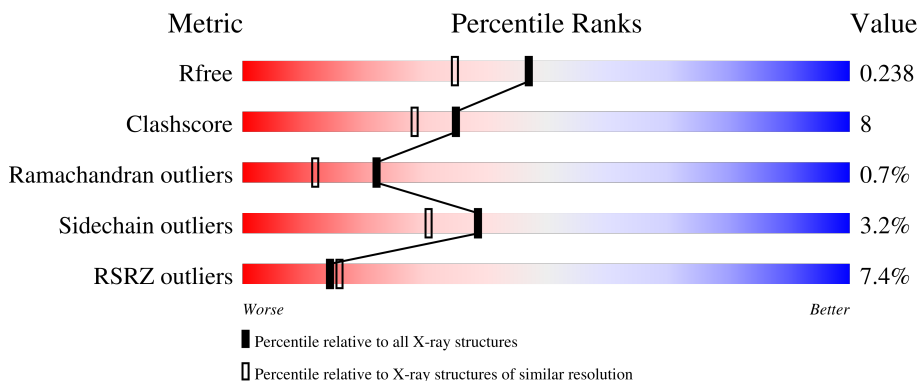
# 1 Overall quality at a glance

The following experimental techniques were used to determine the structure:

*X-RAY DIFFRACTION*

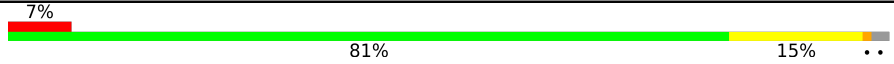
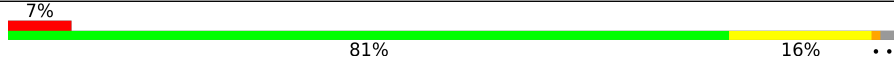
The reported resolution of this entry is 1.90 Å.

Percentile scores (ranging between 0-100) for global validation metrics of the entry are shown in the following graphic. The table shows the number of entries on which the scores are based.



Metric	Whole archive (#Entries)	Similar resolution (#Entries, resolution range(Å))
$R_{free}$	130704	6207 (1.90-1.90)
Clashscore	141614	6847 (1.90-1.90)
Ramachandran outliers	138981	6760 (1.90-1.90)
Sidechain outliers	138945	6760 (1.90-1.90)
RSRZ outliers	127900	6082 (1.90-1.90)

The table below summarises the geometric issues observed across the polymeric chains and their fit to the electron density. The red, orange, yellow and green segments of the lower bar indicate the fraction of residues that contain outliers for  $\geq 3$ , 2, 1 and 0 types of geometric quality criteria respectively. A grey segment represents the fraction of residues that are not modelled. The numeric value for each fraction is indicated below the corresponding segment, with a dot representing fractions  $\leq 5\%$ . The upper red bar (where present) indicates the fraction of residues that have poor fit to the electron density. The numeric value is given above the bar.

Mol	Chain	Length	Quality of chain
1	A	372	
1	B	372	

## 2 Entry composition

There are 5 unique types of molecules in this entry. The entry contains 5866 atoms, of which 0 are hydrogens and 0 are deuteriums.

In the tables below, the ZeroOcc column contains the number of atoms modelled with zero occupancy, the AltConf column contains the number of residues with at least one atom in alternate conformation and the Trace column contains the number of residues modelled with at most 2 atoms.

- Molecule 1 is a protein called Branched-chain amino acid aminotransferase.

Mol	Chain	Residues	Atoms					ZeroOcc	AltConf	Trace
			Total	C	N	O	S			
1	A	363	2780	1769	474	529	8	0	0	0
1	B	363	2780	1769	474	529	8	0	0	0

There are 10 discrepancies between the modelled and reference sequences:

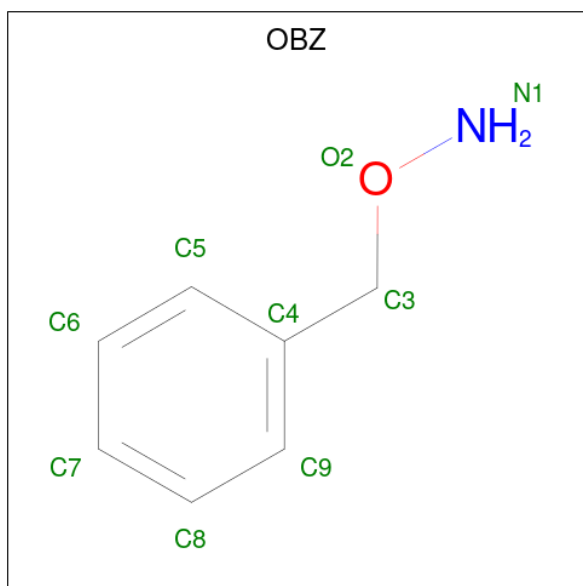
Chain	Residue	Modelled	Actual	Comment	Reference
A	-4	ALA	-	expression tag	UNP A0R066
A	-3	HIS	-	expression tag	UNP A0R066
A	-2	HIS	-	expression tag	UNP A0R066
A	-1	HIS	-	expression tag	UNP A0R066
A	0	HIS	-	expression tag	UNP A0R066
B	-4	ALA	-	expression tag	UNP A0R066
B	-3	HIS	-	expression tag	UNP A0R066
B	-2	HIS	-	expression tag	UNP A0R066
B	-1	HIS	-	expression tag	UNP A0R066
B	0	HIS	-	expression tag	UNP A0R066

- Molecule 2 is PYRIDOXAL-5'-PHOSPHATE (three-letter code: PLP) (formula: C<sub>8</sub>H<sub>10</sub>NO<sub>6</sub>P).



Mol	Chain	Residues	Atoms					ZeroOcc	AltConf
			Total	C	N	O	P		
2	A	1	15	8	1	5	1	0	0
2	B	1	15	8	1	5	1	0	0

- Molecule 3 is O-benzylhydroxylamine (three-letter code: OBZ) (formula: C<sub>7</sub>H<sub>9</sub>NO).



Mol	Chain	Residues	Atoms			ZeroOcc	AltConf
			Total	C	O		
3	A	1	8	7	1	0	0

- Molecule 4 is GLYCEROL (three-letter code: GOL) (formula: C<sub>3</sub>H<sub>8</sub>O<sub>3</sub>).



Mol	Chain	Residues	Atoms	ZeroOcc	AltConf
4	A	1	Total C O 6 3 3	0	0
4	B	1	Total C O 6 3 3	0	0

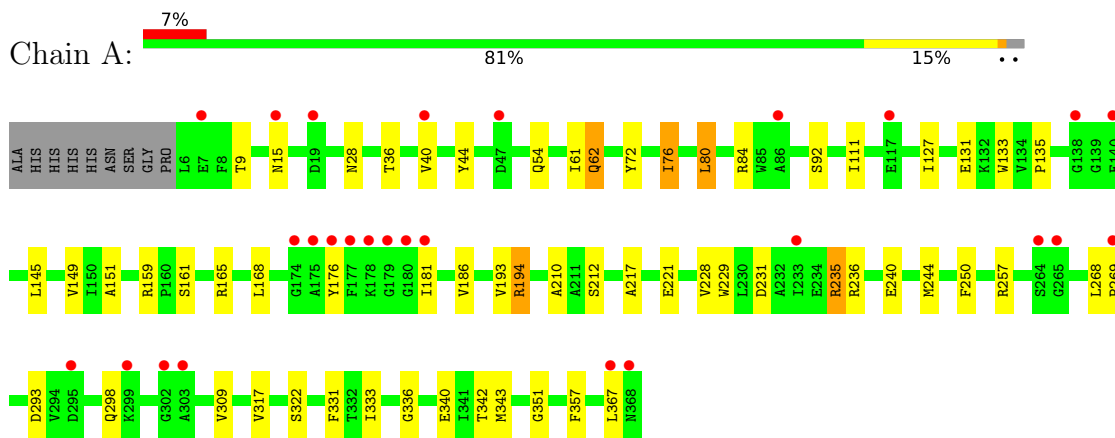
- Molecule 5 is water.

Mol	Chain	Residues	Atoms	ZeroOcc	AltConf
5	A	119	Total O 119 119	0	0
5	B	137	Total O 137 137	0	0

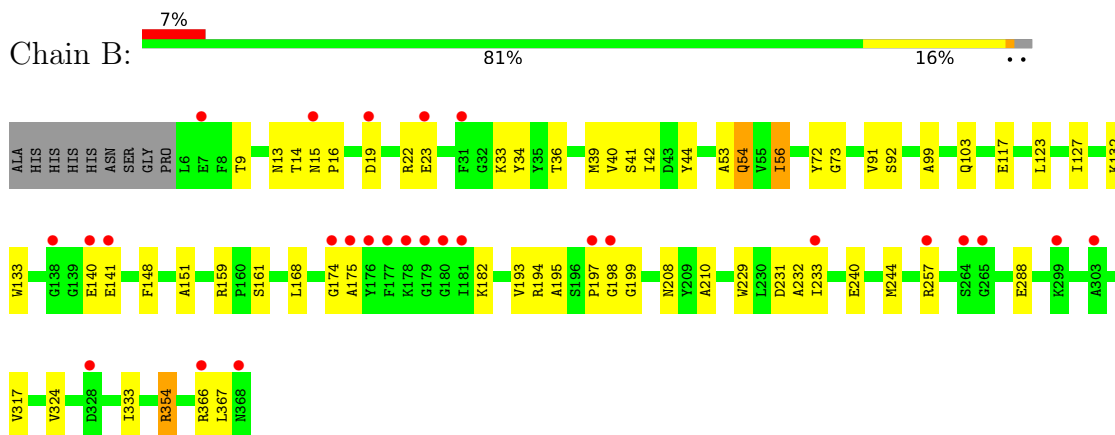
### 3 Residue-property plots

These plots are drawn for all protein, RNA, DNA and oligosaccharide chains in the entry. The first graphic for a chain summarises the proportions of the various outlier classes displayed in the second graphic. The second graphic shows the sequence view annotated by issues in geometry and electron density. Residues are color-coded according to the number of geometric quality criteria for which they contain at least one outlier: green = 0, yellow = 1, orange = 2 and red = 3 or more. A red dot above a residue indicates a poor fit to the electron density ( $RSRZ > 2$ ). Stretches of 2 or more consecutive residues without any outlier are shown as a green connector. Residues present in the sample, but not in the model, are shown in grey.

- Molecule 1: Branched-chain amino acid aminotransferase



- Molecule 1: Branched-chain amino acid aminotransferase



## 4 Data and refinement statistics

Property	Value	Source
Space group	P 1 21 1	Depositor
Cell constants a, b, c, $\alpha$ , $\beta$ , $\gamma$	60.00Å 87.80Å 72.90Å 90.00° 105.80° 90.00°	Depositor
Resolution (Å)	17.00 – 1.90 17.06 – 1.90	Depositor EDS
% Data completeness (in resolution range)	95.0 (17.00-1.90) 99.3 (17.06-1.90)	Depositor EDS
$R_{merge}$	0.09	Depositor
$R_{sym}$	0.11	Depositor
$\langle I/\sigma(I) \rangle$ <sup>1</sup>	3.81 (at 1.90Å)	Xtrriage
Refinement program	CNS 1.1	Depositor
R, $R_{free}$	0.238 , 0.274 0.236 , 0.238	Depositor DCC
$R_{free}$ test set	2890 reflections (5.07%)	wwPDB-VP
Wilson B-factor (Å <sup>2</sup> )	16.9	Xtrriage
Anisotropy	0.572	Xtrriage
Bulk solvent $k_{sol}$ (e/Å <sup>3</sup> ), $B_{sol}$ (Å <sup>2</sup> )	0.43 , 51.7	EDS
L-test for twinning <sup>2</sup>	$\langle  L  \rangle = 0.47$ , $\langle L^2 \rangle = 0.30$	Xtrriage
Estimated twinning fraction	No twinning to report.	Xtrriage
$F_o, F_c$ correlation	0.91	EDS
Total number of atoms	5866	wwPDB-VP
Average B, all atoms (Å <sup>2</sup> )	19.0	wwPDB-VP

Xtrriage's analysis on translational NCS is as follows: *The analyses of the Patterson function reveals a significant off-origin peak that is 22.54 % of the origin peak, indicating pseudo-translational symmetry. The chance of finding a peak of this or larger height randomly in a structure without pseudo-translational symmetry is equal to 5.5859e-03. The detected translational NCS is most likely also responsible for the elevated intensity ratio.*

<sup>1</sup>Intensities estimated from amplitudes.

<sup>2</sup>Theoretical values of  $\langle |L| \rangle$ ,  $\langle L^2 \rangle$  for acentric reflections are 0.5, 0.333 respectively for untwinned datasets, and 0.375, 0.2 for perfectly twinned datasets.

## 5 Model quality [i](#)

### 5.1 Standard geometry [i](#)

Bond lengths and bond angles in the following residue types are not validated in this section: PLP, OBZ, GOL

The Z score for a bond length (or angle) is the number of standard deviations the observed value is removed from the expected value. A bond length (or angle) with  $|Z| > 5$  is considered an outlier worth inspection. RMSZ is the root-mean-square of all Z scores of the bond lengths (or angles).

Mol	Chain	Bond lengths		Bond angles	
		RMSZ	# Z  >5	RMSZ	# Z  >5
1	A	0.33	0/2849	0.58	0/3876
1	B	0.32	0/2849	0.57	0/3876
All	All	0.33	0/5698	0.57	0/7752

There are no bond length outliers.

There are no bond angle outliers.

There are no chirality outliers.

There are no planarity outliers.

### 5.2 Too-close contacts [i](#)

In the following table, the Non-H and H(model) columns list the number of non-hydrogen atoms and hydrogen atoms in the chain respectively. The H(added) column lists the number of hydrogen atoms added and optimized by MolProbity. The Clashes column lists the number of clashes within the asymmetric unit, whereas Symm-Clashes lists symmetry-related clashes.

Mol	Chain	Non-H	H(model)	H(added)	Clashes	Symm-Clashes
1	A	2780	0	2701	48	0
1	B	2780	0	2701	45	0
2	A	15	0	7	1	0
2	B	15	0	7	1	0
3	A	8	0	7	3	0
4	A	6	0	8	1	0
4	B	6	0	8	3	0
5	A	119	0	0	1	0
5	B	137	0	0	2	0
All	All	5866	0	5439	91	0

The all-atom clashscore is defined as the number of clashes found per 1000 atoms (including



hydrogen atoms). The all-atom clashscore for this structure is 8.

All (91) close contacts within the same asymmetric unit are listed below, sorted by their clash magnitude.

Atom-1	Atom-2	Interatomic distance (Å)	Clash overlap (Å)
1:A:194:ARG:HH11	1:A:194:ARG:HB2	1.01	1.10
1:B:193:VAL:HG11	1:B:232:ALA:HB2	1.45	0.99
1:A:76:ILE:HD11	1:A:149:VAL:HB	1.51	0.90
1:A:194:ARG:HB2	1:A:194:ARG:NH1	1.85	0.90
1:A:194:ARG:HH11	1:A:194:ARG:CB	1.86	0.88
1:B:141:GLU:HG2	1:B:174:GLY:HA2	1.53	0.87
1:A:176:TYR:CE1	3:A:371:OBZ:H7	2.12	0.83
1:A:76:ILE:HD12	1:A:111:ILE:HD13	1.61	0.82
1:A:92:SER:HB2	1:A:367:LEU:HD11	1.59	0.82
1:A:236:ARG:HG2	1:A:293:ASP:HB2	1.63	0.81
1:A:176:TYR:CZ	3:A:371:OBZ:H7	2.22	0.74
1:B:91:VAL:HG12	1:B:366:ARG:HD3	1.69	0.73
1:A:76:ILE:HD12	1:A:111:ILE:CD1	2.18	0.73
1:A:80:LEU:CD1	1:A:145:LEU:HB2	2.19	0.73
1:A:76:ILE:CD1	1:A:149:VAL:HB	2.22	0.69
1:B:41:SER:O	1:B:42:ILE:HD13	1.95	0.66
1:B:56:ILE:H	1:B:56:ILE:HD13	1.59	0.66
1:A:217:ALA:O	1:A:221:GLU:HG3	1.97	0.64
1:A:40:VAL:HB	1:A:168:LEU:HB3	1.80	0.63
1:B:42:ILE:HD12	1:B:53:ALA:CB	2.29	0.63
1:A:340:GLU:HG3	5:A:426:HOH:O	2.00	0.60
1:B:193:VAL:CG1	1:B:232:ALA:HB2	2.28	0.59
1:A:80:LEU:HD12	1:A:145:LEU:HB2	1.85	0.58
1:A:342:THR:HG22	1:A:343:MET:CE	2.33	0.58
1:A:342:THR:HG22	1:A:343:MET:HE2	1.86	0.58
1:B:194:ARG:HD2	4:B:370:GOL:O2	2.03	0.58
1:B:324:VAL:HG23	1:B:333:ILE:HD11	1.85	0.58
1:A:76:ILE:HD13	1:A:76:ILE:N	2.19	0.57
1:B:33:LYS:HD2	1:B:34:TYR:CE1	2.39	0.57
1:B:56:ILE:HD13	1:B:56:ILE:N	2.20	0.57
1:B:40:VAL:HB	1:B:168:LEU:HB3	1.86	0.57
1:A:61:ILE:HG23	1:A:165:ARG:NH1	2.20	0.56
1:B:99:ALA:O	1:B:103:GLN:HG3	2.07	0.55
1:A:176:TYR:CZ	3:A:371:OBZ:C7	2.90	0.54
1:B:354:ARG:CB	1:B:354:ARG:HH11	2.21	0.54
1:B:194:ARG:HB2	1:B:229:TRP:CD2	2.43	0.53
1:B:193:VAL:HG12	1:B:195:ALA:H	1.74	0.53
1:A:194:ARG:HB3	1:A:229:TRP:CD2	2.46	0.51

*Continued on next page...*

*Continued from previous page...*

Atom-1	Atom-2	Interatomic distance (Å)	Clash overlap (Å)
1:A:127:ILE:CD1	1:A:367:LEU:HD13	2.41	0.50
1:B:197:PRO:HG2	1:B:233:ILE:HD11	1.93	0.50
1:B:123:LEU:O	1:B:127:ILE:HG12	2.12	0.49
1:B:92:SER:HB2	1:B:367:LEU:HD11	1.95	0.48
1:A:250:PHE:HB2	1:A:257:ARG:HG2	1.95	0.48
1:A:76:ILE:HD13	1:A:76:ILE:H	1.77	0.48
1:A:309:VAL:CG2	1:A:333:ILE:HD13	2.44	0.47
1:A:127:ILE:HD12	1:A:367:LEU:HD13	1.97	0.46
1:B:42:ILE:CD1	1:B:53:ALA:HA	2.46	0.46
1:A:36:THR:HG22	1:A:133:TRP:CG	2.50	0.46
1:B:194:ARG:HG3	4:B:370:GOL:H2	1.96	0.46
1:A:76:ILE:CD1	1:A:111:ILE:HD13	2.38	0.46
1:A:9:THR:OG1	1:A:54:GLN:HB3	2.16	0.46
1:B:140:GLU:HG2	1:B:175:ALA:HB2	1.98	0.46
1:A:210:ALA:HB2	1:B:72:TYR:O	2.16	0.46
1:A:351:GLY:HA3	1:A:357:PHE:CD2	2.50	0.46
1:B:141:GLU:HG2	1:B:174:GLY:CA	2.37	0.45
1:B:117:GLU:H	1:B:117:GLU:CD	2.19	0.45
1:B:140:GLU:H	1:B:140:GLU:CD	2.20	0.45
1:A:186:VAL:HB	1:A:228:VAL:HG23	1.99	0.45
1:A:151:ALA:HB1	1:A:161:SER:HB2	1.99	0.44
1:B:42:ILE:HD13	1:B:53:ALA:HA	1.99	0.44
1:A:61:ILE:HG22	1:A:62:GLN:N	2.33	0.44
1:B:22:ARG:CZ	1:B:132:LYS:HD3	2.48	0.44
1:A:193:VAL:HG12	1:A:235:ARG:NH2	2.33	0.43
1:B:9:THR:OG1	1:B:54:GLN:HB3	2.18	0.43
1:A:212:SER:HB2	1:A:229:TRP:HZ2	1.83	0.43
1:B:19:ASP:O	1:B:23:GLU:HG3	2.19	0.43
1:B:333:ILE:HD12	1:B:333:ILE:N	2.33	0.43
1:A:84:ARG:HB3	1:A:135:PRO:O	2.19	0.43
1:A:240:GLU:OE1	2:A:369:PLP:N1	2.51	0.43
1:A:151:ALA:HB1	1:A:161:SER:CB	2.48	0.43
1:A:44:TYR:CD1	1:A:44:TYR:C	2.93	0.42
1:B:240:GLU:OE1	2:B:369:PLP:N1	2.52	0.42
1:A:72:TYR:O	1:B:210:ALA:HB2	2.19	0.42
1:B:14:THR:HG22	1:B:14:THR:O	2.20	0.42
1:B:208:ASN:HB3	4:B:370:GOL:O1	2.19	0.42
1:B:13:ASN:O	1:B:16:PRO:HD3	2.20	0.42
1:B:354:ARG:HH11	1:B:354:ARG:HB2	1.85	0.42
1:B:36:THR:HG22	1:B:133:TRP:CG	2.55	0.41
1:B:44:TYR:CD1	1:B:44:TYR:C	2.93	0.41

*Continued on next page...*

Continued from previous page...

Atom-1	Atom-2	Interatomic distance (Å)	Clash overlap (Å)
1:B:151:ALA:HB1	1:B:161:SER:HB2	2.01	0.41
1:A:250:PHE:HB2	1:A:257:ARG:CG	2.50	0.41
1:B:198:GLY:C	5:B:502:HOH:O	2.59	0.41
1:B:39:MET:O	1:B:56:ILE:HD13	2.20	0.41
1:A:322:SER:HB2	1:A:336:GLY:HA2	2.03	0.41
1:B:257:ARG:NH1	1:B:288:GLU:OE2	2.54	0.41
1:A:240:GLU:HB3	1:A:244:MET:O	2.20	0.41
1:A:194:ARG:NH1	4:A:370:GOL:O3	2.54	0.40
1:B:193:VAL:HG13	5:B:427:HOH:O	2.21	0.40
1:A:268:LEU:HA	1:A:269:PRO:HD3	1.91	0.40
1:B:240:GLU:HB3	1:B:244:MET:O	2.22	0.40
1:A:298:GLN:HG3	1:A:331:PHE:CD1	2.57	0.40

There are no symmetry-related clashes.

## 5.3 Torsion angles [i](#)

### 5.3.1 Protein backbone [i](#)

In the following table, the Percentiles column shows the percent Ramachandran outliers of the chain as a percentile score with respect to all X-ray entries followed by that with respect to entries of similar resolution.

The Analysed column shows the number of residues for which the backbone conformation was analysed, and the total number of residues.

Mol	Chain	Analysed	Favoured	Allowed	Outliers	Percentiles	
1	A	361/372 (97%)	344 (95%)	15 (4%)	2 (1%)	25	15
1	B	361/372 (97%)	345 (96%)	13 (4%)	3 (1%)	19	9
All	All	722/744 (97%)	689 (95%)	28 (4%)	5 (1%)	22	12

All (5) Ramachandran outliers are listed below:

Mol	Chain	Res	Type
1	A	181	ILE
1	B	199	GLY
1	A	317	VAL
1	B	317	VAL
1	B	73	GLY

### 5.3.2 Protein sidechains [i](#)

In the following table, the Percentiles column shows the percent sidechain outliers of the chain as a percentile score with respect to all X-ray entries followed by that with respect to entries of similar resolution.

The Analysed column shows the number of residues for which the sidechain conformation was analysed, and the total number of residues.

Mol	Chain	Analysed	Rotameric	Outliers	Percentiles	
1	A	284/291 (98%)	274 (96%)	10 (4%)	36	27
1	B	284/291 (98%)	276 (97%)	8 (3%)	43	36
All	All	568/582 (98%)	550 (97%)	18 (3%)	39	30

All (18) residues with a non-rotameric sidechain are listed below:

Mol	Chain	Res	Type
1	A	15	ASN
1	A	28	ASN
1	A	62	GLN
1	A	76	ILE
1	A	80	LEU
1	A	131	GLU
1	A	159	ARG
1	A	194	ARG
1	A	231	ASP
1	A	235	ARG
1	B	15	ASN
1	B	54	GLN
1	B	56	ILE
1	B	148	PHE
1	B	159	ARG
1	B	182	LYS
1	B	231	ASP
1	B	354	ARG

Sometimes sidechains can be flipped to improve hydrogen bonding and reduce clashes. All (6) such sidechains are listed below:

Mol	Chain	Res	Type
1	A	15	ASN
1	A	62	GLN
1	A	226	GLN
1	B	15	ASN

*Continued on next page...*

*Continued from previous page...*

Mol	Chain	Res	Type
1	B	226	GLN
1	B	368	ASN

### 5.3.3 RNA [i](#)

There are no RNA molecules in this entry.

### 5.4 Non-standard residues in protein, DNA, RNA chains [i](#)

There are no non-standard protein/DNA/RNA residues in this entry.

### 5.5 Carbohydrates [i](#)

There are no monosaccharides in this entry.

### 5.6 Ligand geometry [i](#)

5 ligands are modelled in this entry.

In the following table, the Counts columns list the number of bonds (or angles) for which Mogul statistics could be retrieved, the number of bonds (or angles) that are observed in the model and the number of bonds (or angles) that are defined in the Chemical Component Dictionary. The Link column lists molecule types, if any, to which the group is linked. The Z score for a bond length (or angle) is the number of standard deviations the observed value is removed from the expected value. A bond length (or angle) with  $|Z| > 2$  is considered an outlier worth inspection. RMSZ is the root-mean-square of all Z scores of the bond lengths (or angles).

Mol	Type	Chain	Res	Link	Bond lengths			Bond angles		
					Counts	RMSZ	# Z  > 2	Counts	RMSZ	# Z  > 2
4	GOL	A	370	-	5,5,5	0.80	0	5,5,5	1.70	1 (20%)
3	OBZ	A	371	-	8,8,9	1.47	0	9,9,10	0.88	0
2	PLP	B	369	1	15,15,16	2.17	6 (40%)	20,22,23	1.98	7 (35%)
4	GOL	B	370	-	5,5,5	0.71	0	5,5,5	1.68	1 (20%)
2	PLP	A	369	1	15,15,16	2.09	6 (40%)	20,22,23	2.02	7 (35%)

In the following table, the Chirals column lists the number of chiral outliers, the number of chiral centers analysed, the number of these observed in the model and the number defined in the Chemical Component Dictionary. Similar counts are reported in the Torsion and Rings columns. '-' means no outliers of that kind were identified.

Mol	Type	Chain	Res	Link	Chirals	Torsions	Rings
4	GOL	A	370	-	-	2/4/4/4	-
3	OBZ	A	371	-	-	0/2/2/3	0/1/1/1
2	PLP	B	369	1	-	0/6/6/8	0/1/1/1
4	GOL	B	370	-	-	0/4/4/4	-
2	PLP	A	369	1	-	0/6/6/8	0/1/1/1

All (12) bond length outliers are listed below:

Mol	Chain	Res	Type	Atoms	Z	Observed(Å)	Ideal(Å)
2	B	369	PLP	C3-C4	4.14	1.48	1.40
2	B	369	PLP	C5-C4	3.81	1.44	1.40
2	A	369	PLP	C3-C4	3.72	1.47	1.40
2	A	369	PLP	C2-N1	3.40	1.40	1.33
2	B	369	PLP	C2-N1	3.33	1.40	1.33
2	A	369	PLP	C5-C4	3.32	1.44	1.40
2	B	369	PLP	P-O2P	-2.91	1.43	1.54
2	A	369	PLP	P-O2P	-2.83	1.43	1.54
2	A	369	PLP	C6-C5	2.62	1.43	1.37
2	B	369	PLP	C6-C5	2.41	1.42	1.37
2	A	369	PLP	C4A-C4	-2.18	1.47	1.51
2	B	369	PLP	C6-N1	2.09	1.38	1.34

All (16) bond angle outliers are listed below:

Mol	Chain	Res	Type	Atoms	Z	Observed(°)	Ideal(°)
2	A	369	PLP	O4P-C5A-C5	4.23	117.41	109.35
2	B	369	PLP	O4P-C5A-C5	3.92	116.82	109.35
2	B	369	PLP	O3P-P-O4P	-3.33	97.88	106.73
2	B	369	PLP	C5A-C5-C6	-3.23	114.06	119.37
2	A	369	PLP	O3P-P-O4P	-3.23	98.15	106.73
2	A	369	PLP	C5A-C5-C6	-3.06	114.34	119.37
2	B	369	PLP	C6-N1-C2	3.00	124.73	119.17
2	A	369	PLP	C6-N1-C2	3.00	124.72	119.17
2	A	369	PLP	C5-C6-N1	-2.91	118.97	123.82
4	A	370	GOL	C3-C2-C1	-2.86	100.58	111.70
2	B	369	PLP	C5-C6-N1	-2.78	119.19	123.82
2	B	369	PLP	C2A-C2-C3	2.78	124.32	120.89
2	A	369	PLP	C2A-C2-C3	2.77	124.31	120.89
2	A	369	PLP	O2P-P-O4P	2.48	113.33	106.73
4	B	370	GOL	C3-C2-C1	-2.46	102.13	111.70
2	B	369	PLP	O2P-P-O4P	2.35	112.99	106.73

There are no chirality outliers.

All (2) torsion outliers are listed below:

Mol	Chain	Res	Type	Atoms
4	A	370	GOL	C1-C2-C3-O3
4	A	370	GOL	O2-C2-C3-O3

There are no ring outliers.

5 monomers are involved in 9 short contacts:

Mol	Chain	Res	Type	Clashes	Symm-Clashes
4	A	370	GOL	1	0
3	A	371	OBZ	3	0
2	B	369	PLP	1	0
4	B	370	GOL	3	0
2	A	369	PLP	1	0

## 5.7 Other polymers [i](#)

There are no such residues in this entry.

## 5.8 Polymer linkage issues [i](#)

There are no chain breaks in this entry.

## 6 Fit of model and data

### 6.1 Protein, DNA and RNA chains

In the following table, the column labelled ‘#RSRZ > 2’ contains the number (and percentage) of RSRZ outliers, followed by percent RSRZ outliers for the chain as percentile scores relative to all X-ray entries and entries of similar resolution. The OWAB column contains the minimum, median, 95<sup>th</sup> percentile and maximum values of the occupancy-weighted average B-factor per residue. The column labelled ‘Q < 0.9’ lists the number of (and percentage) of residues with an average occupancy less than 0.9.

Mol	Chain	Analysed	<RSRZ>	#RSRZ>2	OWAB(Å <sup>2</sup> )	Q<0.9
1	A	363/372 (97%)	0.62	27 (7%) 14 16	10, 18, 32, 53	0
1	B	363/372 (97%)	0.54	27 (7%) 14 16	10, 18, 31, 47	0
All	All	726/744 (97%)	0.58	54 (7%) 14 16	10, 18, 32, 53	0

All (54) RSRZ outliers are listed below:

Mol	Chain	Res	Type	RSRZ
1	A	179	GLY	10.1
1	A	181	ILE	10.0
1	B	179	GLY	8.2
1	A	178	LYS	7.7
1	A	138	GLY	7.3
1	B	177	PHE	6.9
1	B	176	TYR	6.4
1	A	177	PHE	6.0
1	B	180	GLY	5.9
1	B	138	GLY	5.7
1	B	198	GLY	5.2
1	B	181	ILE	5.0
1	B	174	GLY	4.6
1	A	265	GLY	4.4
1	A	140	GLU	4.4
1	B	175	ALA	4.1
1	A	368	ASN	4.0
1	B	368	ASN	4.0
1	B	178	LYS	4.0
1	A	175	ALA	4.0
1	A	303	ALA	3.9
1	B	140	GLU	3.6
1	A	176	TYR	3.5
1	A	180	GLY	3.1

*Continued on next page...*



*Continued from previous page...*

Mol	Chain	Res	Type	RSRZ
1	B	15	ASN	3.0
1	A	15	ASN	3.0
1	A	47	ASP	3.0
1	A	264	SER	3.0
1	B	366	ARG	3.0
1	A	7	GLU	2.9
1	A	40	VAL	2.8
1	B	264	SER	2.8
1	A	174	GLY	2.7
1	B	265	GLY	2.7
1	A	19	ASP	2.6
1	B	299	LYS	2.6
1	A	302	GLY	2.6
1	A	233	ILE	2.6
1	B	31	PHE	2.6
1	B	141	GLU	2.6
1	B	7	GLU	2.5
1	B	303	ALA	2.5
1	B	233	ILE	2.4
1	A	117	GLU	2.3
1	B	19	ASP	2.2
1	A	86	ALA	2.2
1	B	257	ARG	2.2
1	A	299	LYS	2.2
1	B	197	PRO	2.1
1	A	295	ASP	2.1
1	A	367	LEU	2.1
1	A	269	PRO	2.1
1	B	328	ASP	2.0
1	B	23	GLU	2.0

## 6.2 Non-standard residues in protein, DNA, RNA chains [\(i\)](#)

There are no non-standard protein/DNA/RNA residues in this entry.

## 6.3 Carbohydrates [\(i\)](#)

There are no monosaccharides in this entry.

## 6.4 Ligands [i](#)

In the following table, the Atoms column lists the number of modelled atoms in the group and the number defined in the chemical component dictionary. The B-factors column lists the minimum, median, 95<sup>th</sup> percentile and maximum values of B factors of atoms in the group. The column labelled 'Q< 0.9' lists the number of atoms with occupancy less than 0.9.

Mol	Type	Chain	Res	Atoms	RSCC	RSR	B-factors(Å <sup>2</sup> )	Q<0.9
3	OBZ	A	371	8/9	0.62	0.26	41,43,45,45	0
4	GOL	B	370	6/6	0.82	0.18	24,28,30,31	0
4	GOL	A	370	6/6	0.88	0.17	21,24,25,26	0
2	PLP	A	369	15/16	0.95	0.10	13,16,19,19	0
2	PLP	B	369	15/16	0.96	0.09	9,14,19,19	0

## 6.5 Other polymers [i](#)

There are no such residues in this entry.