



# Full wwPDB X-ray Structure Validation Report ⓘ

Oct 15, 2023 – 05:37 PM EDT

PDB ID : 8DSD  
Title : Human NAMPT in complex with substrate NAM and small molecule activator NP-A1-S  
Authors : Ratia, K.; Xiong, R.; Shen, Z.; Thatcher, G.R.  
Deposited on : 2022-07-22  
Resolution : 1.43 Å(reported)

This is a Full wwPDB X-ray Structure Validation Report for a publicly released PDB entry.

We welcome your comments at [validation@mail.wwpdb.org](mailto:validation@mail.wwpdb.org)

A user guide is available at

<https://www.wwpdb.org/validation/2017/XrayValidationReportHelp>

with specific help available everywhere you see the ⓘ symbol.

The types of validation reports are described at

<http://www.wwpdb.org/validation/2017/FAQs#types>.

---

The following versions of software and data (see [references ⓘ](#)) were used in the production of this report:

MolProbity : 4.02b-467  
Mogul : 1.8.5 (274361), CSD as541be (2020)  
Xtriage (Phenix) : 1.13  
EDS : 2.36  
buster-report : 1.1.7 (2018)  
Percentile statistics : 20191225.v01 (using entries in the PDB archive December 25th 2019)  
Refmac : 5.8.0158  
CCP4 : 7.0.044 (Gargrove)  
Ideal geometry (proteins) : Engh & Huber (2001)  
Ideal geometry (DNA, RNA) : Parkinson et al. (1996)  
Validation Pipeline (wwPDB-VP) : 2.36

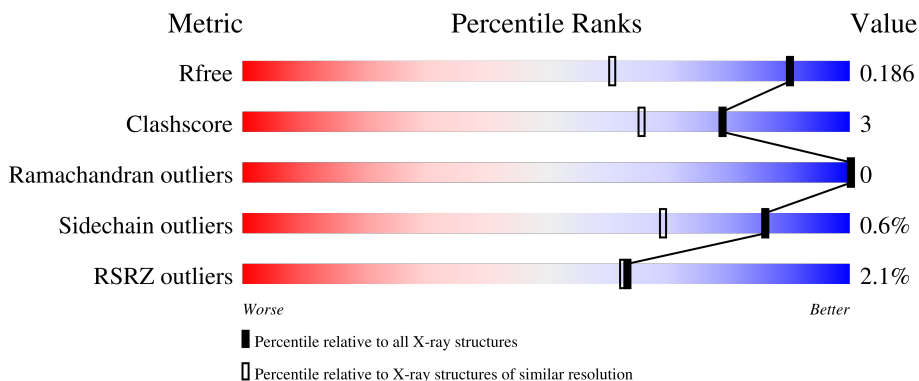
# 1 Overall quality at a glance

The following experimental techniques were used to determine the structure:

*X-RAY DIFFRACTION*

The reported resolution of this entry is 1.43 Å.

Percentile scores (ranging between 0-100) for global validation metrics of the entry are shown in the following graphic. The table shows the number of entries on which the scores are based.



Metric	Whole archive (#Entries)	Similar resolution (#Entries, resolution range(Å))
$R_{free}$	130704	2579 (1.44-1.40)
Clashscore	141614	2696 (1.44-1.40)
Ramachandran outliers	138981	2632 (1.44-1.40)
Sidechain outliers	138945	2631 (1.44-1.40)
RSRZ outliers	127900	2528 (1.44-1.40)

The table below summarises the geometric issues observed across the polymeric chains and their fit to the electron density. The red, orange, yellow and green segments of the lower bar indicate the fraction of residues that contain outliers for  $\geq 3$ , 2, 1 and 0 types of geometric quality criteria respectively. A grey segment represents the fraction of residues that are not modelled. The numeric value for each fraction is indicated below the corresponding segment, with a dot representing fractions  $\leq 5\%$ . The upper red bar (where present) indicates the fraction of residues that have poor fit to the electron density. The numeric value is given above the bar.

Mol	Chain	Length	Quality of chain
1	A	499	 2% 88% 5% 6%
1	B	499	 2% 86% 7% 6%

## 2 Entry composition [i](#)

There are 7 unique types of molecules in this entry. The entry contains 8682 atoms, of which 56 are hydrogens and 0 are deuteriums.

In the tables below, the ZeroOcc column contains the number of atoms modelled with zero occupancy, the AltConf column contains the number of residues with at least one atom in alternate conformation and the Trace column contains the number of residues modelled with at most 2 atoms.

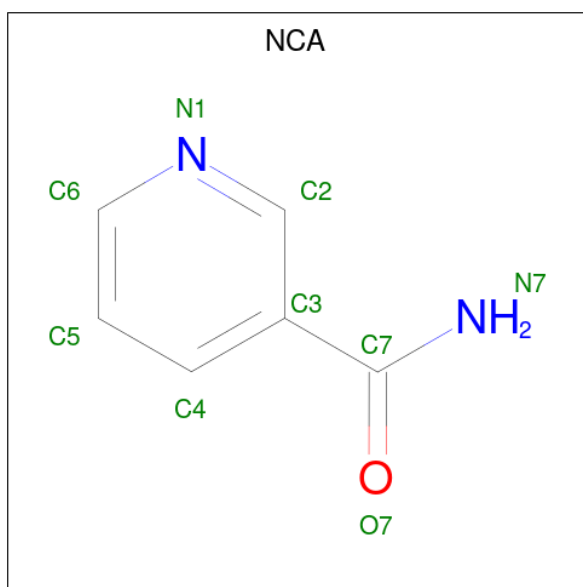
- Molecule 1 is a protein called Nicotinamide phosphoribosyltransferase.

Mol	Chain	Residues	Atoms					ZeroOcc	AltConf	Trace
			Total	C	N	O	S			
1	A	467	3777	2434	620	716	7	0	9	0
1	B	467	3767	2428	617	715	7	0	9	0

There are 16 discrepancies between the modelled and reference sequences:

Chain	Residue	Modelled	Actual	Comment	Reference
A	492	LEU	-	expression tag	UNP P43490
A	493	GLU	-	expression tag	UNP P43490
A	494	HIS	-	expression tag	UNP P43490
A	495	HIS	-	expression tag	UNP P43490
A	496	HIS	-	expression tag	UNP P43490
A	497	HIS	-	expression tag	UNP P43490
A	498	HIS	-	expression tag	UNP P43490
A	499	HIS	-	expression tag	UNP P43490
B	492	LEU	-	expression tag	UNP P43490
B	493	GLU	-	expression tag	UNP P43490
B	494	HIS	-	expression tag	UNP P43490
B	495	HIS	-	expression tag	UNP P43490
B	496	HIS	-	expression tag	UNP P43490
B	497	HIS	-	expression tag	UNP P43490
B	498	HIS	-	expression tag	UNP P43490
B	499	HIS	-	expression tag	UNP P43490

- Molecule 2 is NICOTINAMIDE (three-letter code: NCA) (formula: C<sub>6</sub>H<sub>6</sub>N<sub>2</sub>O).



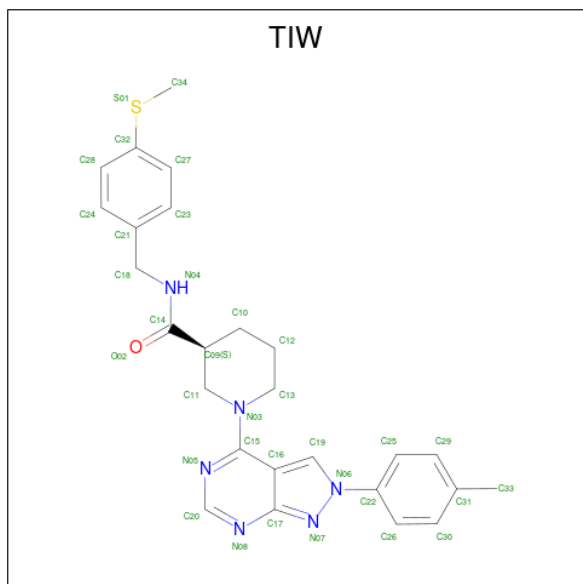
Mol	Chain	Residues	Atoms				ZeroOcc	AltConf
2	A	1	Total	C	N	O	0	0
			9	6	2	1		
2	B	1	Total	C	N	O	0	0
			9	6	2	1		

- Molecule 3 is PHOSPHATE ION (three-letter code: PO4) (formula: O<sub>4</sub>P).



Mol	Chain	Residues	Atoms		ZeroOcc	AltConf	
3	A	1	Total	O	P	0	0
			5	4	1		
3	B	1	Total	O	P	0	0
			5	4	1		

- Molecule 4 is (3S)-1-[2-(4-methylphenyl)-2H-pyrazolo[3,4-d]pyrimidin-4-yl]-N-[4-(methylsulfanyl)phenyl]methyl}piperidine-3-carboxamide (three-letter code: TIW) (formula: C<sub>26</sub>H<sub>28</sub>N<sub>6</sub>OS) (labeled as "Ligand of Interest" by depositor).



Mol	Chain	Residues	Atoms					ZeroOcc	AltConf	
			Total	C	H	N	O			S
4	A	1	Total	C	H	N	O	S	0	1
			62	26	28	6	1	1		
4	B	1	Total	C	H	N	O	S	0	1
			62	26	28	6	1	1		

- Molecule 5 is CHLORIDE ION (three-letter code: CL) (formula: Cl).

Mol	Chain	Residues	Atoms	ZeroOcc	AltConf
5	A	3	Total Cl 3 3	0	0

- Molecule 6 is GLYCEROL (three-letter code: GOL) (formula: C<sub>3</sub>H<sub>8</sub>O<sub>3</sub>).



Mol	Chain	Residues	Atoms	ZeroOcc	AltConf
6	B	1	Total C O 6 3 3	0	0

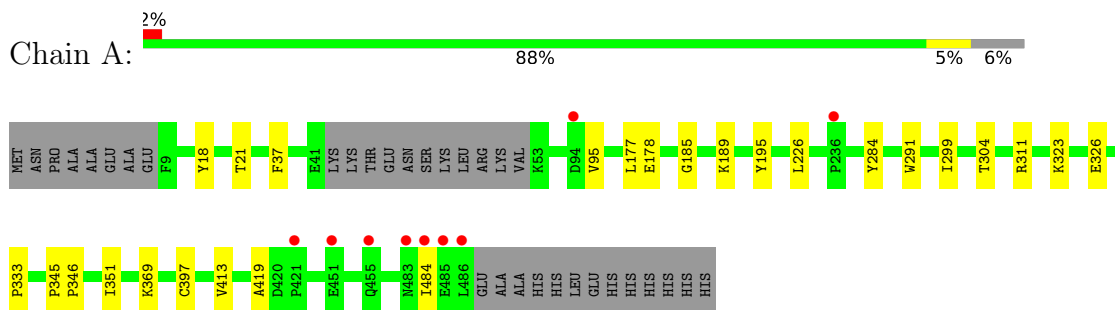
- Molecule 7 is water.

Mol	Chain	Residues	Atoms	ZeroOcc	AltConf
7	A	490	Total O 490 490	0	14
7	B	487	Total O 487 487	0	12

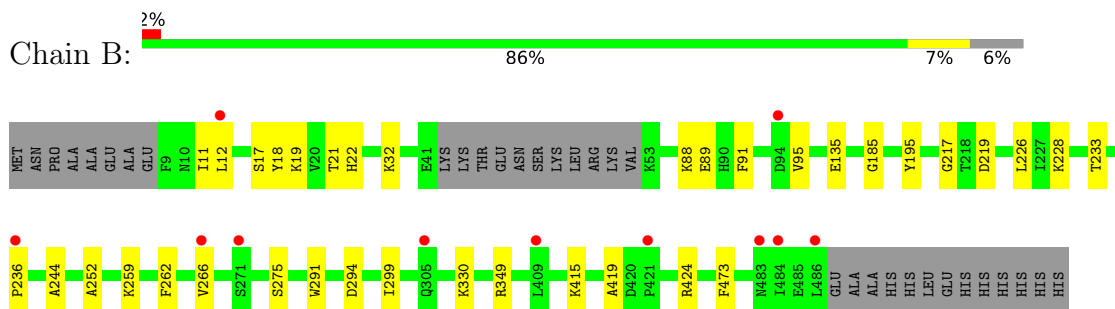
### 3 Residue-property plots [i](#)

These plots are drawn for all protein, RNA, DNA and oligosaccharide chains in the entry. The first graphic for a chain summarises the proportions of the various outlier classes displayed in the second graphic. The second graphic shows the sequence view annotated by issues in geometry and electron density. Residues are color-coded according to the number of geometric quality criteria for which they contain at least one outlier: green = 0, yellow = 1, orange = 2 and red = 3 or more. A red dot above a residue indicates a poor fit to the electron density ( $RSRZ > 2$ ). Stretches of 2 or more consecutive residues without any outlier are shown as a green connector. Residues present in the sample, but not in the model, are shown in grey.

- Molecule 1: Nicotinamide phosphoribosyltransferase



- Molecule 1: Nicotinamide phosphoribosyltransferase



## 4 Data and refinement statistics

Property	Value	Source
Space group	P 1 21 1	Depositor
Cell constants a, b, c, $\alpha$ , $\beta$ , $\gamma$	60.51Å 106.69Å 82.80Å 90.00° 96.55° 90.00°	Depositor
Resolution (Å)	19.86 – 1.43 19.86 – 1.43	Depositor EDS
% Data completeness (in resolution range)	98.9 (19.86-1.43) 98.9 (19.86-1.43)	Depositor EDS
$R_{merge}$	0.04	Depositor
$R_{sym}$	(Not available)	Depositor
$\langle I/\sigma(I) \rangle$ <sup>1</sup>	1.43 (at 1.43Å)	Xtrriage
Refinement program	PHENIX 1.16_3549	Depositor
R, $R_{free}$	0.164 , 0.186 0.164 , 0.186	Depositor DCC
$R_{free}$ test set	9537 reflections (5.01%)	wwPDB-VP
Wilson B-factor (Å <sup>2</sup> )	15.0	Xtrriage
Anisotropy	0.397	Xtrriage
Bulk solvent $k_{sol}$ (e/Å <sup>3</sup> ), $B_{sol}$ (Å <sup>2</sup> )	0.40 , 45.6	EDS
L-test for twinning <sup>2</sup>	$\langle  L  \rangle = 0.50$ , $\langle L^2 \rangle = 0.33$	Xtrriage
Estimated twinning fraction	No twinning to report.	Xtrriage
$F_o, F_c$ correlation	0.97	EDS
Total number of atoms	8682	wwPDB-VP
Average B, all atoms (Å <sup>2</sup> )	19.0	wwPDB-VP

Xtrriage's analysis on translational NCS is as follows: *The largest off-origin peak in the Patterson function is 4.38% of the height of the origin peak. No significant pseudotranslation is detected.*

<sup>1</sup>Intensities estimated from amplitudes.

<sup>2</sup>Theoretical values of  $\langle |L| \rangle$ ,  $\langle L^2 \rangle$  for acentric reflections are 0.5, 0.333 respectively for untwinned datasets, and 0.375, 0.2 for perfectly twinned datasets.



## 5 Model quality

### 5.1 Standard geometry

Bond lengths and bond angles in the following residue types are not validated in this section: NCA, PO4, TIW, GOL, CL

The Z score for a bond length (or angle) is the number of standard deviations the observed value is removed from the expected value. A bond length (or angle) with  $|Z| > 5$  is considered an outlier worth inspection. RMSZ is the root-mean-square of all Z scores of the bond lengths (or angles).

Mol	Chain	Bond lengths		Bond angles	
		RMSZ	# Z  >5	RMSZ	# Z  >5
1	A	0.64	0/3893	0.74	0/5279
1	B	0.62	0/3882	0.72	0/5266
All	All	0.63	0/7775	0.73	0/10545

There are no bond length outliers.

There are no bond angle outliers.

There are no chirality outliers.

There are no planarity outliers.

### 5.2 Too-close contacts

In the following table, the Non-H and H(model) columns list the number of non-hydrogen atoms and hydrogen atoms in the chain respectively. The H(added) column lists the number of hydrogen atoms added and optimized by MolProbity. The Clashes column lists the number of clashes within the asymmetric unit, whereas Symm-Clashes lists symmetry-related clashes.

Mol	Chain	Non-H	H(model)	H(added)	Clashes	Symm-Clashes
1	A	3777	0	3756	16	0
1	B	3767	0	3750	26	0
2	A	9	0	6	0	0
2	B	9	0	6	0	0
3	A	5	0	0	0	0
3	B	5	0	0	0	0
4	A	34	28	0	1	0
4	B	34	28	0	6	0
5	A	3	0	0	0	0
6	B	6	0	8	0	0
7	A	490	0	0	4	0

*Continued on next page...*

*Continued from previous page...*

Mol	Chain	Non-H	H(model)	H(added)	Clashes	Symm-Clashes
7	B	487	0	0	4	0
All	All	8626	56	7526	43	0

The all-atom clashscore is defined as the number of clashes found per 1000 atoms (including hydrogen atoms). The all-atom clashscore for this structure is 3.

All (43) close contacts within the same asymmetric unit are listed below, sorted by their clash magnitude.

Atom-1	Atom-2	Interatomic distance (Å)	Clash overlap (Å)
4:B:1104[D]:TIW:C22	4:B:1104[D]:TIW:N06	1.73	1.49
1:B:185:GLY:HA3	4:B:1104[D]:TIW:C20	2.09	0.83
1:B:262:PHE:O	1:B:266:VAL:HG22	1.96	0.65
1:A:333:PRO:O	1:A:345:PRO:HD3	2.00	0.61
1:B:349:ARG:HG3	4:B:1104[D]:TIW:C28	2.31	0.60
1:A:311[B]:ARG:HG3	1:A:351:ILE:HG23	1.84	0.59
1:A:304:THR:HG22	1:A:346:PRO:HB2	1.84	0.59
1:B:95:VAL:HG22	1:B:95:VAL:O	2.06	0.56
1:A:95:VAL:O	1:A:95:VAL:HG22	2.09	0.52
1:A:178:GLU:OE1	1:A:369:LYS:NZ	2.46	0.49
1:B:185:GLY:CA	4:B:1104[D]:TIW:C20	2.86	0.49
1:B:233:THR:HG22	1:B:473:PHE:HB3	1.95	0.48
1:B:291:TRP:CE3	1:B:299:ILE:HD11	2.48	0.48
1:B:19:LYS:HA	1:B:22:HIS:ND1	2.29	0.48
1:B:11:ILE:HG23	1:B:12:LEU:HD12	1.96	0.47
1:B:349:ARG:HG3	4:B:1104[D]:TIW:C32	2.44	0.47
1:B:21:THR:HG22	1:B:95:VAL:HG21	1.97	0.47
1:B:236:PRO:HD2	7:B:1228:HOH:O	2.15	0.47
4:B:1104[D]:TIW:C22	4:B:1104[D]:TIW:C19	2.81	0.47
1:A:189:LYS:NZ	7:A:1115[C]:HOH:O	2.48	0.46
1:B:17:SER:O	1:B:91:PHE:HZ	1.99	0.46
1:A:291:TRP:CE3	1:A:299:ILE:HD11	2.52	0.45
1:B:330:LYS:NZ	7:B:1213:HOH:O	2.49	0.45
1:B:226:LEU:C	1:B:226:LEU:HD23	2.37	0.45
1:B:88:LYS:NZ	1:B:89:GLU:OE2	2.47	0.45
1:A:226:LEU:C	1:A:226:LEU:HD23	2.37	0.44
1:B:259:LYS:HD2	1:B:294:ASP:HB3	2.00	0.44
1:A:326:GLU:HG2	7:A:1120:HOH:O	2.17	0.44
7:A:1522:HOH:O	1:B:228:LYS:HD3	2.17	0.43
1:B:12:LEU:HD12	1:B:12:LEU:N	2.34	0.43
1:A:185:GLY:HA3	4:A:1003[D]:TIW:C20	2.49	0.43
7:A:1236:HOH:O	1:B:419:ALA:HB3	2.19	0.42

*Continued on next page...*

Continued from previous page...

Atom-1	Atom-2	Interatomic distance (Å)	Clash overlap (Å)
1:A:21:THR:HG22	1:A:95:VAL:HG21	2.01	0.42
1:A:177:LEU:HD22	1:A:484:ILE:HD11	2.01	0.42
1:A:284:TYR:CG	1:A:323:LYS:HE2	2.54	0.42
1:A:37:PHE:CZ	1:A:397:CYS:HB3	2.55	0.42
1:B:415:LYS:O	1:B:424:ARG:HA	2.20	0.42
1:B:32:LYS:NZ	1:B:135:GLU:OE1	2.46	0.41
1:B:244:ALA:HA	1:B:275:SER:O	2.20	0.41
1:A:419:ALA:HB3	7:B:1322:HOH:O	2.20	0.41
1:A:413:VAL:HG11	1:B:252:ALA:HA	2.02	0.41
1:B:291:TRP:HE3	1:B:299:ILE:HD11	1.85	0.41
1:B:217:GLY:HA3	7:B:1422:HOH:O	2.22	0.40

There are no symmetry-related clashes.

## 5.3 Torsion angles [i](#)

### 5.3.1 Protein backbone [i](#)

In the following table, the Percentiles column shows the percent Ramachandran outliers of the chain as a percentile score with respect to all X-ray entries followed by that with respect to entries of similar resolution.

The Analysed column shows the number of residues for which the backbone conformation was analysed, and the total number of residues.

Mol	Chain	Analysed	Favoured	Allowed	Outliers	Percentiles	
1	A	472/499 (95%)	462 (98%)	10 (2%)	0	100	100
1	B	472/499 (95%)	464 (98%)	8 (2%)	0	100	100
All	All	944/998 (95%)	926 (98%)	18 (2%)	0	100	100

There are no Ramachandran outliers to report.

### 5.3.2 Protein sidechains [i](#)

In the following table, the Percentiles column shows the percent sidechain outliers of the chain as a percentile score with respect to all X-ray entries followed by that with respect to entries of similar resolution.

The Analysed column shows the number of residues for which the sidechain conformation was analysed, and the total number of residues.

Mol	Chain	Analysed	Rotameric	Outliers	Percentiles	
1	A	417/438 (95%)	415 (100%)	2 (0%)	88	73
1	B	417/438 (95%)	414 (99%)	3 (1%)	84	65
All	All	834/876 (95%)	829 (99%)	5 (1%)	86	69

All (5) residues with a non-rotameric sidechain are listed below:

Mol	Chain	Res	Type
1	A	18	TYR
1	A	195	TYR
1	B	18	TYR
1	B	195	TYR
1	B	219	ASP

Sometimes sidechains can be flipped to improve hydrogen bonding and reduce clashes. All (2) such sidechains are listed below:

Mol	Chain	Res	Type
1	A	305	GLN
1	A	483	ASN

### 5.3.3 RNA [i](#)

There are no RNA molecules in this entry.

## 5.4 Non-standard residues in protein, DNA, RNA chains [i](#)

There are no non-standard protein/DNA/RNA residues in this entry.

## 5.5 Carbohydrates [i](#)

There are no monosaccharides in this entry.

## 5.6 Ligand geometry [i](#)

Of 10 ligands modelled in this entry, 3 are monoatomic - leaving 7 for Mogul analysis.

In the following table, the Counts columns list the number of bonds (or angles) for which Mogul statistics could be retrieved, the number of bonds (or angles) that are observed in the model and the number of bonds (or angles) that are defined in the Chemical Component Dictionary. The Link column lists molecule types, if any, to which the group is linked. The Z score for a bond

length (or angle) is the number of standard deviations the observed value is removed from the expected value. A bond length (or angle) with  $|Z| > 2$  is considered an outlier worth inspection. RMSZ is the root-mean-square of all Z scores of the bond lengths (or angles).

Mol	Type	Chain	Res	Link	Bond lengths			Bond angles		
					Counts	RMSZ	# Z  > 2	Counts	RMSZ	# Z  > 2
2	NCA	A	1001	-	9,9,9	1.63	2 (22%)	11,11,11	2.04	3 (27%)
4	TIW	A	1003[D]	-	38,38,38	3.49	17 (44%)	42,53,53	2.36	10 (23%)
2	NCA	B	1101	-	9,9,9	1.68	1 (11%)	11,11,11	1.78	3 (27%)
3	PO4	A	1002	-	4,4,4	0.67	0	6,6,6	0.40	0
3	PO4	B	1102	-	4,4,4	0.84	0	6,6,6	0.61	0
6	GOL	B	1103	-	5,5,5	0.82	0	5,5,5	1.15	1 (20%)
4	TIW	B	1104[D]	-	38,38,38	4.08	24 (63%)	42,53,53	2.32	12 (28%)

In the following table, the Chirals column lists the number of chiral outliers, the number of chiral centers analysed, the number of these observed in the model and the number defined in the Chemical Component Dictionary. Similar counts are reported in the Torsion and Rings columns. '-' means no outliers of that kind were identified.

Mol	Type	Chain	Res	Link	Chirals	Torsions	Rings
2	NCA	A	1001	-	-	0/4/4/4	0/1/1/1
4	TIW	A	1003[D]	-	-	8/19/29/29	0/5/5/5
2	NCA	B	1101	-	-	0/4/4/4	0/1/1/1
6	GOL	B	1103	-	-	1/4/4/4	-
4	TIW	B	1104[D]	-	-	6/19/29/29	0/5/5/5

All (44) bond length outliers are listed below:

Mol	Chain	Res	Type	Atoms	Z	Observed(Å)	Ideal(Å)
4	B	1104[D]	TIW	C22-N06	10.37	1.73	1.44
4	B	1104[D]	TIW	C32-S01	9.45	1.97	1.76
4	A	1003[D]	TIW	C32-S01	9.42	1.97	1.76
4	A	1003[D]	TIW	C18-C21	8.63	1.70	1.51
4	B	1104[D]	TIW	C17-N08	8.25	1.48	1.37
4	A	1003[D]	TIW	C22-N06	8.06	1.66	1.44
4	B	1104[D]	TIW	C18-C21	7.79	1.68	1.51
4	A	1003[D]	TIW	C17-N08	6.35	1.45	1.37
4	B	1104[D]	TIW	C15-N03	6.34	1.55	1.37
4	B	1104[D]	TIW	C20-N05	6.11	1.45	1.33
4	B	1104[D]	TIW	C17-N07	5.91	1.44	1.34
4	A	1003[D]	TIW	C20-N05	5.57	1.44	1.33
4	B	1104[D]	TIW	C14-N04	4.85	1.44	1.33
4	A	1003[D]	TIW	C17-N07	4.84	1.42	1.34

*Continued on next page...*

*Continued from previous page...*

Mol	Chain	Res	Type	Atoms	Z	Observed(Å)	Ideal(Å)
4	A	1003[D]	TIW	C15-N03	4.83	1.51	1.37
2	B	1101	NCA	C7-N7	4.53	1.41	1.33
4	B	1104[D]	TIW	C19-N06	4.08	1.41	1.36
4	B	1104[D]	TIW	C09-C14	4.00	1.58	1.51
2	A	1001	NCA	C7-N7	3.94	1.40	1.33
4	B	1104[D]	TIW	C15-C16	3.70	1.51	1.43
4	B	1104[D]	TIW	C13-N03	3.61	1.52	1.46
4	A	1003[D]	TIW	C14-N04	3.58	1.41	1.33
4	B	1104[D]	TIW	C29-C25	3.51	1.45	1.38
4	A	1003[D]	TIW	C13-N03	3.50	1.52	1.46
4	A	1003[D]	TIW	C19-N06	3.42	1.40	1.36
4	B	1104[D]	TIW	C33-C31	3.37	1.63	1.51
4	B	1104[D]	TIW	C30-C26	3.24	1.44	1.38
4	A	1003[D]	TIW	C09-C14	3.09	1.57	1.51
4	A	1003[D]	TIW	C28-C24	2.99	1.44	1.38
4	B	1104[D]	TIW	C27-C23	2.83	1.43	1.38
4	B	1104[D]	TIW	C28-C24	2.83	1.43	1.38
4	A	1003[D]	TIW	C33-C31	2.82	1.61	1.51
4	B	1104[D]	TIW	C26-C22	2.77	1.43	1.38
4	A	1003[D]	TIW	C29-C25	2.67	1.43	1.38
4	A	1003[D]	TIW	C15-C16	2.63	1.49	1.43
4	B	1104[D]	TIW	C11-N03	2.55	1.51	1.46
4	B	1104[D]	TIW	C25-C22	2.52	1.43	1.38
4	B	1104[D]	TIW	N07-N06	2.50	1.44	1.39
4	A	1003[D]	TIW	C30-C26	2.36	1.43	1.38
4	B	1104[D]	TIW	C19-C16	2.27	1.45	1.40
4	A	1003[D]	TIW	C24-C21	2.27	1.43	1.38
2	A	1001	NCA	O7-C7	-2.13	1.20	1.24
4	B	1104[D]	TIW	C34-S01	2.01	1.87	1.79
4	B	1104[D]	TIW	C24-C21	2.01	1.43	1.38

All (29) bond angle outliers are listed below:

Mol	Chain	Res	Type	Atoms	Z	Observed(°)	Ideal(°)
4	A	1003[D]	TIW	C09-C14-N04	8.81	127.42	115.99
4	B	1104[D]	TIW	C09-C14-N04	7.33	125.50	115.99
4	B	1104[D]	TIW	C19-N06-N07	-6.99	105.59	112.72
4	A	1003[D]	TIW	C19-N06-N07	-5.77	106.84	112.72
4	A	1003[D]	TIW	C34-S01-C32	5.16	115.80	103.38
4	B	1104[D]	TIW	C34-S01-C32	5.02	115.44	103.38
4	A	1003[D]	TIW	O02-C14-C09	-4.15	116.72	122.12
2	A	1001	NCA	C3-C2-N1	-3.87	117.77	123.49

*Continued on next page...*

Continued from previous page...

Mol	Chain	Res	Type	Atoms	Z	Observed(°)	Ideal(°)
4	B	1104[D]	TIW	O02-C14-C09	-3.84	117.12	122.12
2	A	1001	NCA	C6-N1-C2	3.70	123.26	116.85
4	A	1003[D]	TIW	O02-C14-N04	-3.33	115.83	122.99
4	A	1003[D]	TIW	N08-C20-N05	-3.31	123.50	128.68
2	A	1001	NCA	C4-C3-C2	3.29	121.36	117.63
4	B	1104[D]	TIW	N08-C20-N05	-3.20	123.67	128.68
2	B	1101	NCA	C6-N1-C2	3.07	122.16	116.85
4	A	1003[D]	TIW	C25-C22-N06	2.99	121.77	119.15
4	B	1104[D]	TIW	O02-C14-N04	-2.62	117.37	122.99
4	B	1104[D]	TIW	C25-C22-N06	2.49	121.33	119.15
4	B	1104[D]	TIW	C20-N08-C17	2.46	119.21	113.45
2	B	1101	NCA	C3-C2-N1	-2.41	119.93	123.49
4	A	1003[D]	TIW	C20-N08-C17	2.38	119.02	113.45
4	B	1104[D]	TIW	C26-C22-C25	-2.35	117.84	121.33
4	A	1003[D]	TIW	N05-C15-N03	2.21	121.67	116.99
4	B	1104[D]	TIW	C11-N03-C15	2.21	126.77	119.06
4	B	1104[D]	TIW	N05-C15-N03	2.19	121.63	116.99
4	B	1104[D]	TIW	C10-C12-C13	2.18	113.91	110.85
6	B	1103	GOL	C3-C2-C1	-2.13	103.44	111.70
4	A	1003[D]	TIW	C11-N03-C15	2.07	126.29	119.06
2	B	1101	NCA	C2-C3-C7	-2.01	115.88	121.03

There are no chirality outliers.

All (15) torsion outliers are listed below:

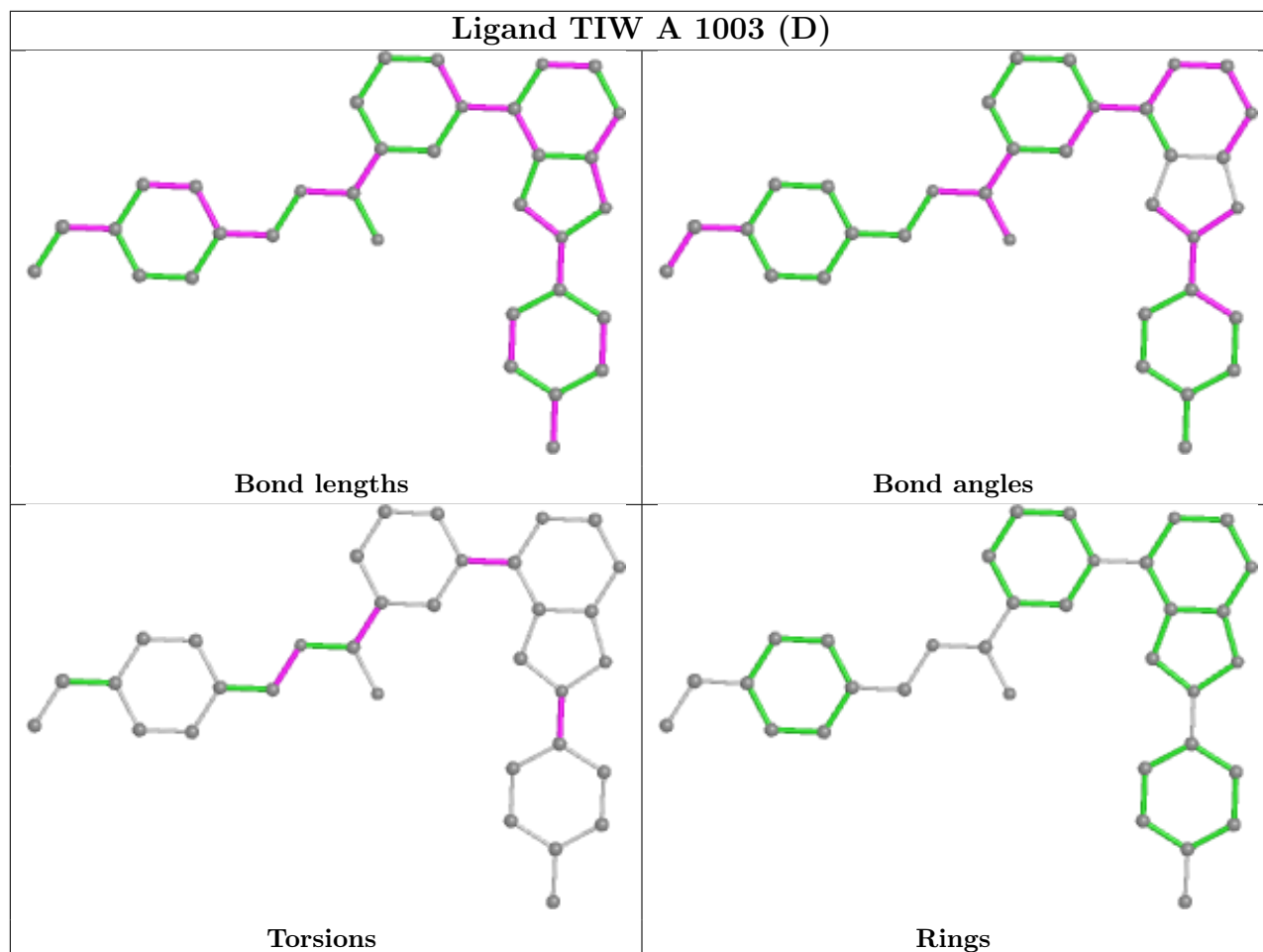
Mol	Chain	Res	Type	Atoms
4	A	1003[D]	TIW	C16-C15-N03-C13
4	A	1003[D]	TIW	N05-C15-N03-C13
4	A	1003[D]	TIW	C26-C22-N06-N07
4	B	1104[D]	TIW	N05-C15-N03-C11
4	B	1104[D]	TIW	C21-C18-N04-C14
4	A	1003[D]	TIW	C10-C09-C14-N04
4	B	1104[D]	TIW	C10-C09-C14-N04
4	B	1104[D]	TIW	C10-C09-C14-O02
4	A	1003[D]	TIW	C21-C18-N04-C14
4	A	1003[D]	TIW	C10-C09-C14-O02
4	B	1104[D]	TIW	C16-C15-N03-C11
4	A	1003[D]	TIW	C25-C22-N06-N07
4	A	1003[D]	TIW	C26-C22-N06-C19
4	B	1104[D]	TIW	C16-C15-N03-C13
6	B	1103	GOL	O2-C2-C3-O3

There are no ring outliers.

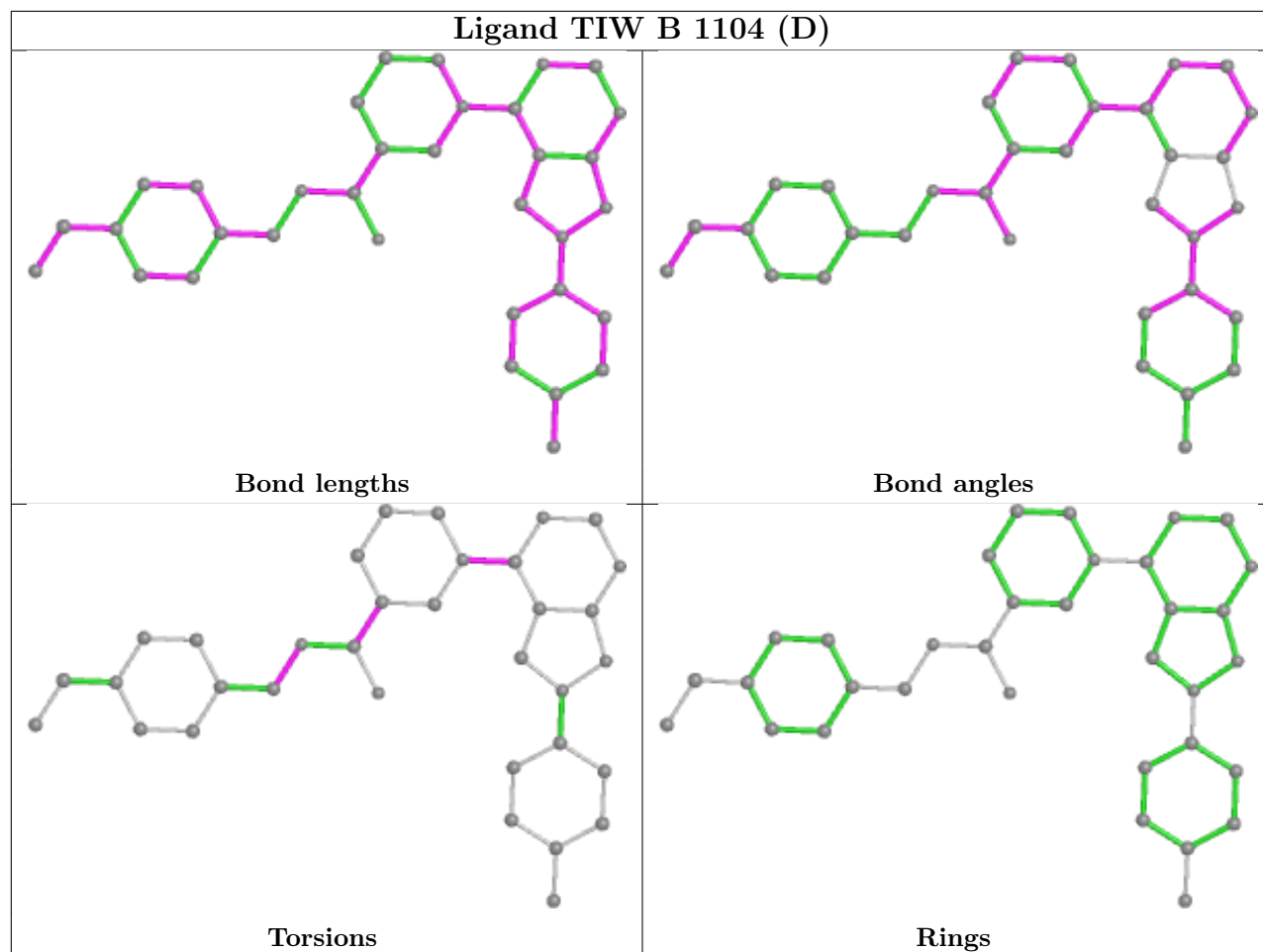
2 monomers are involved in 7 short contacts:

Mol	Chain	Res	Type	Clashes	Symm-Clashes
4	A	1003[D]	TIW	1	0
4	B	1104[D]	TIW	6	0

The following is a two-dimensional graphical depiction of Mogul quality analysis of bond lengths, bond angles, torsion angles, and ring geometry for all instances of the Ligand of Interest. In addition, ligands with molecular weight > 250 and outliers as shown on the validation Tables will also be included. For torsion angles, if less than 5% of the Mogul distribution of torsion angles is within 10 degrees of the torsion angle in question, then that torsion angle is considered an outlier. Any bond that is central to one or more torsion angles identified as an outlier by Mogul will be highlighted in the graph. For rings, the root-mean-square deviation (RMSD) between the ring in question and similar rings identified by Mogul is calculated over all ring torsion angles. If the average RMSD is greater than 60 degrees and the minimal RMSD between the ring in question and any Mogul-identified rings is also greater than 60 degrees, then that ring is considered an outlier. The outliers are highlighted in purple. The color gray indicates Mogul did not find sufficient equivalents in the CSD to analyse the geometry.







## 5.7 Other polymers [i](#)

There are no such residues in this entry.

## 5.8 Polymer linkage issues [i](#)

There are no chain breaks in this entry.

## 6 Fit of model and data

### 6.1 Protein, DNA and RNA chains

In the following table, the column labelled ‘#RSRZ > 2’ contains the number (and percentage) of RSRZ outliers, followed by percent RSRZ outliers for the chain as percentile scores relative to all X-ray entries and entries of similar resolution. The OWAB column contains the minimum, median, 95<sup>th</sup> percentile and maximum values of the occupancy-weighted average B-factor per residue. The column labelled ‘Q < 0.9’ lists the number of (and percentage) of residues with an average occupancy less than 0.9.

Mol	Chain	Analysed	<RSRZ>	#RSRZ>2	OWAB(Å <sup>2</sup> )	Q<0.9
1	A	467/499 (93%)	-0.15	9 (1%) 66 66	10, 17, 29, 43	0
1	B	467/499 (93%)	-0.09	11 (2%) 59 58	10, 17, 29, 44	0
All	All	934/998 (93%)	-0.12	20 (2%) 63 63	10, 17, 29, 44	0

All (20) RSRZ outliers are listed below:

Mol	Chain	Res	Type	RSRZ
1	A	486	LEU	7.1
1	A	484	ILE	5.1
1	B	486	LEU	4.9
1	B	484	ILE	4.3
1	A	483	ASN	3.6
1	B	409	LEU	3.3
1	B	94	ASP	2.9
1	A	236	PRO	2.6
1	B	305	GLN	2.6
1	A	94	ASP	2.6
1	B	271	SER	2.6
1	B	421	PRO	2.4
1	A	455	GLN	2.3
1	A	421	PRO	2.2
1	B	483	ASN	2.2
1	B	236	PRO	2.2
1	B	266	VAL	2.2
1	B	12	LEU	2.1
1	A	451	GLU	2.0
1	A	485	GLU	2.0

## 6.2 Non-standard residues in protein, DNA, RNA chains [i](#)

There are no non-standard protein/DNA/RNA residues in this entry.

## 6.3 Carbohydrates [i](#)

There are no monosaccharides in this entry.

## 6.4 Ligands [i](#)

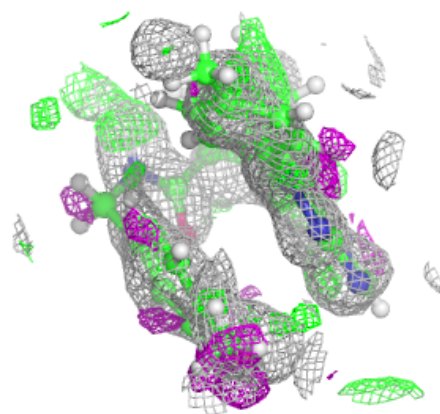
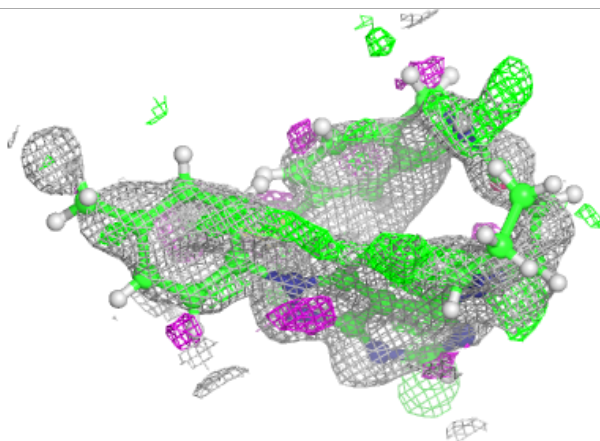
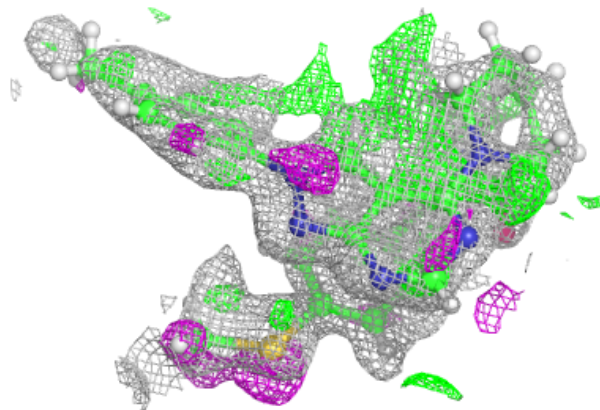
In the following table, the Atoms column lists the number of modelled atoms in the group and the number defined in the chemical component dictionary. The B-factors column lists the minimum, median, 95<sup>th</sup> percentile and maximum values of B factors of atoms in the group. The column labelled 'Q< 0.9' lists the number of atoms with occupancy less than 0.9.

Mol	Type	Chain	Res	Atoms	RSCC	RSR	B-factors(Å <sup>2</sup> )	Q<0.9
4	TIW	B	1104[D]	34/34	0.73	0.23	21,30,39,43	62
4	TIW	A	1003[D]	34/34	0.80	0.18	20,29,39,42	62
6	GOL	B	1103	6/6	0.85	0.15	23,23,25,26	0
5	CL	A	1006	1/1	0.94	0.07	31,31,31,31	1
2	NCA	A	1001	9/9	0.96	0.07	13,14,15,17	0
3	PO4	A	1002	5/5	0.97	0.08	21,25,29,30	5
3	PO4	B	1102	5/5	0.97	0.10	23,24,28,31	5
2	NCA	B	1101	9/9	0.97	0.05	13,14,15,16	0
5	CL	A	1004	1/1	0.99	0.04	15,15,15,15	1
5	CL	A	1005	1/1	1.00	0.03	17,17,17,17	1

The following is a graphical depiction of the model fit to experimental electron density of all instances of the Ligand of Interest. In addition, ligands with molecular weight > 250 and outliers as shown on the geometry validation Tables will also be included. Each fit is shown from different orientation to approximate a three-dimensional view.

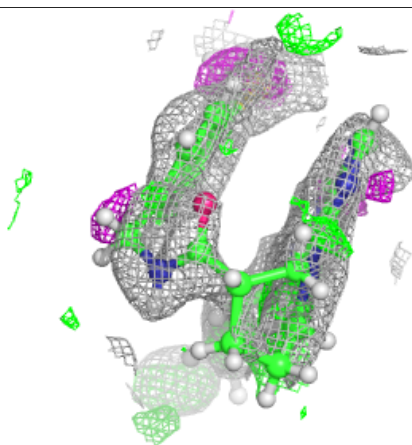
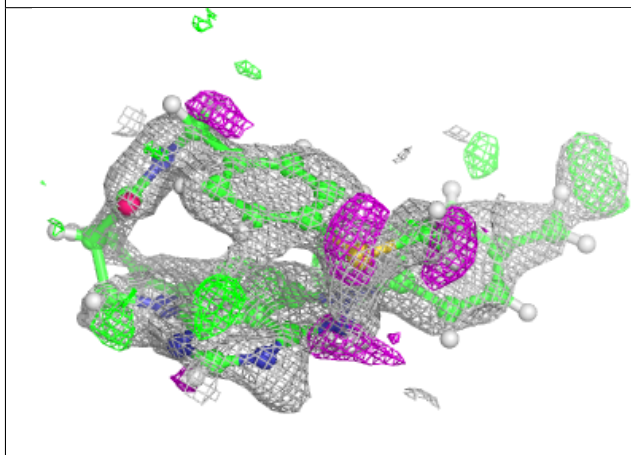
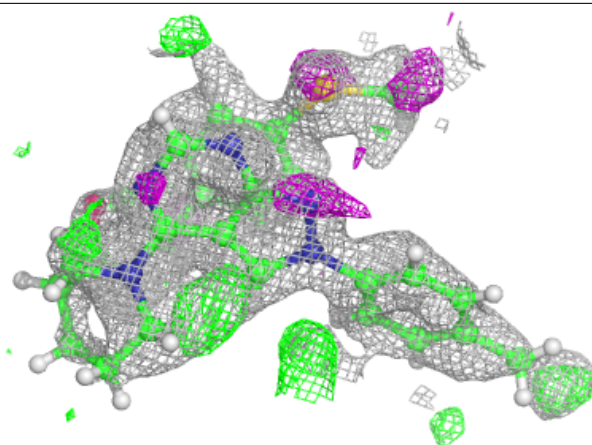
**Electron density around TIW B 1104 (D):**

$2mF_o-DF_c$  (at 0.7 rmsd) in gray  
 $mF_o-DF_c$  (at 3 rmsd) in purple (negative)  
and green (positive)



**Electron density around TIW A 1003 (D):**

$2mF_o-DF_c$  (at 0.7 rmsd) in gray  
 $mF_o-DF_c$  (at 3 rmsd) in purple (negative)  
and green (positive)



## 6.5 Other polymers [i](#)

There are no such residues in this entry.