



Full wwPDB X-ray Structure Validation Report ⓘ

May 24, 2020 – 07:13 am BST

PDB ID : 5DN2
Title : Human NRP2 b1 domain in complex with the peptide corresponding to the C-terminus of VEGF-A
Authors : Tsai, Y.C.I.; Frankel, P.; Fotinou, C.; Rana, R.; Zachary, I.; Djordjevic, S.
Deposited on : 2015-09-09
Resolution : 1.95 Å(reported)

This is a Full wwPDB X-ray Structure Validation Report for a publicly released PDB entry.

We welcome your comments at validation@mail.wwpdb.org

A user guide is available at

<https://www.wwpdb.org/validation/2017/XrayValidationReportHelp>

with specific help available everywhere you see the ⓘ symbol.

The following versions of software and data (see [references ⓘ](#)) were used in the production of this report:

MolProbity : 4.02b-467
Mogul : 1.8.5 (274361), CSD as541be (2020)
Xtriage (Phenix) : 1.13
EDS : 2.11
Percentile statistics : 20191225.v01 (using entries in the PDB archive December 25th 2019)
Refmac : 5.8.0158
CCP4 : 7.0.044 (Gargrove)
Ideal geometry (proteins) : Engh & Huber (2001)
Ideal geometry (DNA, RNA) : Parkinson et al. (1996)
Validation Pipeline (wwPDB-VP) : 2.11

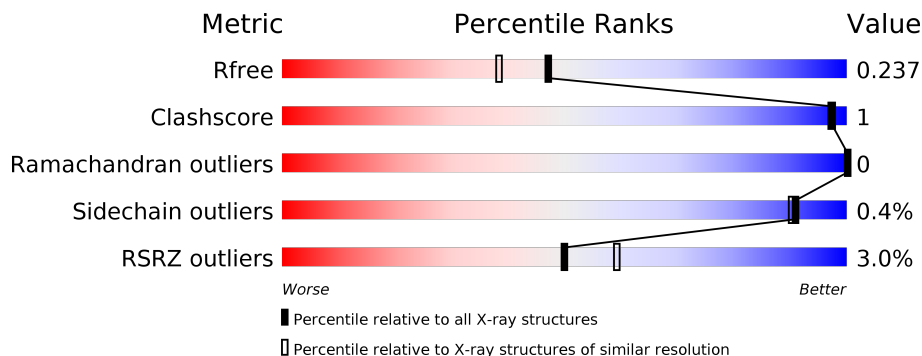
1 Overall quality at a glance

The following experimental techniques were used to determine the structure:

X-RAY DIFFRACTION

The reported resolution of this entry is 1.95 Å.

Percentile scores (ranging between 0-100) for global validation metrics of the entry are shown in the following graphic. The table shows the number of entries on which the scores are based.




Metric	Whole archive (#Entries)	Similar resolution (#Entries, resolution range(Å))
R_{free}	130704	2580 (1.96-1.96)
Clashscore	141614	2705 (1.96-1.96)
Ramachandran outliers	138981	2678 (1.96-1.96)
Sidechain outliers	138945	2678 (1.96-1.96)
RSRZ outliers	127900	2539 (1.96-1.96)

The table below summarises the geometric issues observed across the polymeric chains and their fit to the electron density. The red, orange, yellow and green segments on the lower bar indicate the fraction of residues that contain outliers for ≥ 3 , 2, 1 and 0 types of geometric quality criteria respectively. A grey segment represents the fraction of residues that are not modelled. The numeric value for each fraction is indicated below the corresponding segment, with a dot representing fractions $\leq 5\%$. The upper red bar (where present) indicates the fraction of residues that have poor fit to the electron density. The numeric value is given above the bar.

Mol	Chain	Length	Quality of chain
1	A	156	 97%
1	B	156	 97%
1	C	156	 99%
1	D	156	 97%
2	E	28	 25% 29% 71%
2	F	28	 11% 14% 86%

Continued on next page...

Continued from previous page...

Mol	Chain	Length	Quality of chain
2	G	28	 <p>A horizontal bar chart representing the quality of chain. The bar is divided into three segments: a red segment on the left labeled '11%', a green segment in the middle labeled '14%', and a grey segment on the right labeled '86%'. The total length of the bar represents 100%.</p>

2 Entry composition [i](#)

There are 5 unique types of molecules in this entry. The entry contains 5504 atoms, of which 0 are hydrogens and 0 are deuteriums.

In the tables below, the ZeroOcc column contains the number of atoms modelled with zero occupancy, the AltConf column contains the number of residues with at least one atom in alternate conformation and the Trace column contains the number of residues modelled with at most 2 atoms.

- Molecule 1 is a protein called Neuropilin-2.

Mol	Chain	Residues	Atoms					ZeroOcc	AltConf	Trace
			Total	C	N	O	S			
1	A	156	1280	803	233	237	7	0	4	0
1	B	156	1255	785	229	235	6	0	0	0
1	C	156	1260	789	229	235	7	0	1	0
1	D	156	1282	803	235	237	7	0	4	0

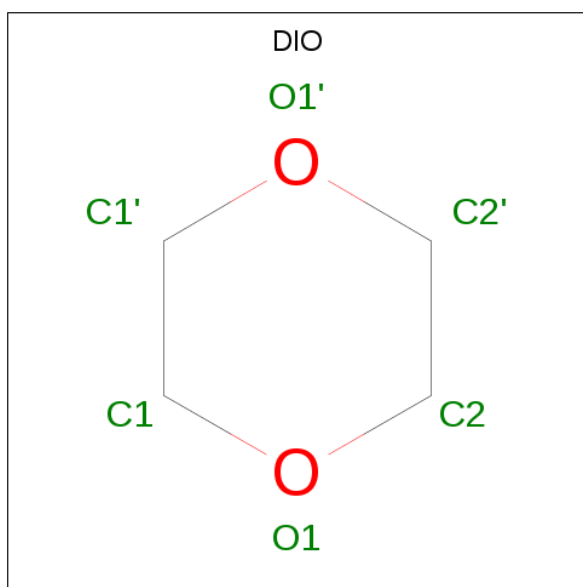
There are 4 discrepancies between the modelled and reference sequences:

Chain	Residue	Modelled	Actual	Comment	Reference
A	274	MET	-	initiating methionine	UNP O60462
B	274	MET	-	initiating methionine	UNP O60462
C	274	MET	-	initiating methionine	UNP O60462
D	274	MET	-	initiating methionine	UNP O60462

- Molecule 2 is a protein called Vascular endothelial growth factor A.

Mol	Chain	Residues	Atoms					ZeroOcc	AltConf	Trace
			Total	C	N	O	S			
2	F	4	35	20	10	5	0	0	0	
2	G	4	35	20	10	5	0	0	0	
2	E	8	70	39	18	11	2	0	0	0

- Molecule 3 is 1,4-DIETHYLENE DIOXIDE (three-letter code: DIO) (formula: C₄H₈O₂).



Mol	Chain	Residues	Atoms			ZeroOcc	AltConf
3	B	1	Total	C	O	0	0
			6	4	2		
3	D	1	Total	C	O	0	0
			6	4	2		

- Molecule 4 is GLYCEROL (three-letter code: GOL) (formula: $C_3H_8O_3$).



Mol	Chain	Residues	Atoms			ZeroOcc	AltConf
4	B	1	Total	C	O	0	0
			6	3	3		

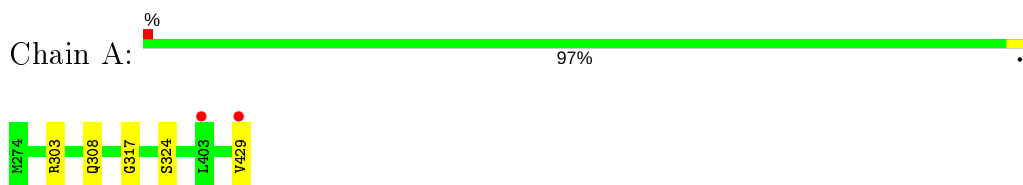
- Molecule 5 is water.

Mol	Chain	Residues	Atoms	ZeroOcc	AltConf
5	A	70	Total O 70 70	0	0
5	B	75	Total O 75 75	0	0
5	C	58	Total O 58 58	0	0
5	D	62	Total O 62 62	0	0
5	F	1	Total O 1 1	0	0
5	G	2	Total O 2 2	0	0
5	E	1	Total O 1 1	0	0

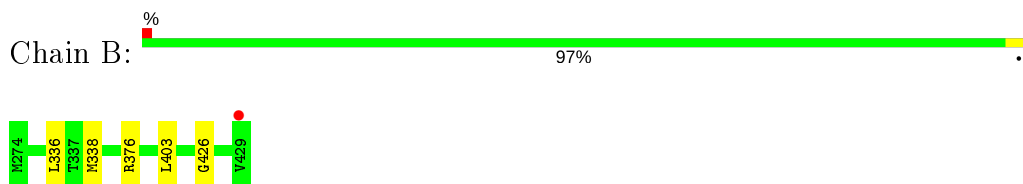
3 Residue-property plots [i](#)

These plots are drawn for all protein, RNA and DNA chains in the entry. The first graphic for a chain summarises the proportions of the various outlier classes displayed in the second graphic. The second graphic shows the sequence view annotated by issues in geometry and electron density. Residues are color-coded according to the number of geometric quality criteria for which they contain at least one outlier: green = 0, yellow = 1, orange = 2 and red = 3 or more. A red dot above a residue indicates a poor fit to the electron density ($RSRZ > 2$). Stretches of 2 or more consecutive residues without any outlier are shown as a green connector. Residues present in the sample, but not in the model, are shown in grey.

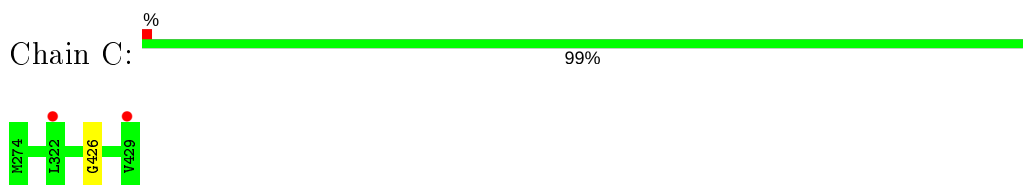
- Molecule 1: Neuropilin-2



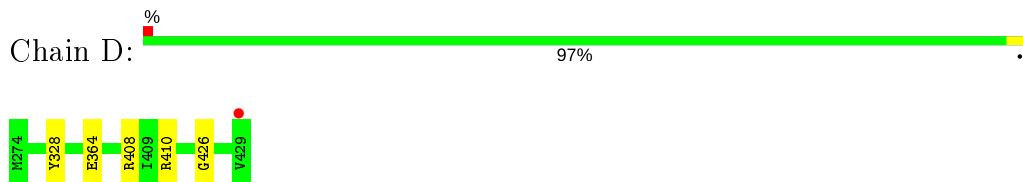
- Molecule 1: Neuropilin-2



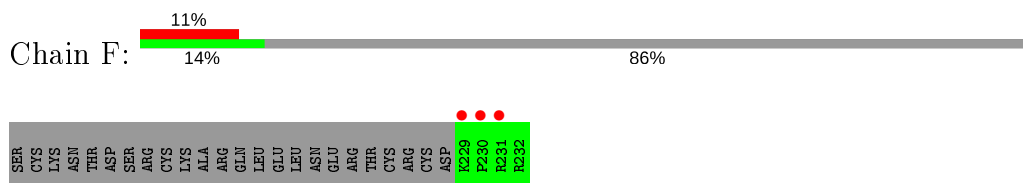
- Molecule 1: Neuropilin-2



- Molecule 1: Neuropilin-2



- Molecule 2: Vascular endothelial growth factor A



- Molecule 2: Vascular endothelial growth factor A



SER	CYS	LYS	ASN	THR	ASP	SER	ARG	CYS	LYS	ALA	ARG	GLN	LEU	GLU	LEU	LEU	ASN	GLU	ARG	THR	CYS	ARG	CYS	ASP	K229	P230	R231	R232
-----	-----	-----	-----	-----	-----	-----	-----	-----	-----	-----	-----	-----	-----	-----	-----	-----	-----	-----	-----	-----	-----	-----	-----	-----	------	------	------	------

- Molecule 2: Vascular endothelial growth factor A



SER	CYS	LYS	ASN	THR	ASP	SER	ARG	CYS	LYS	ALA	ARG	GLN	LEU	GLU	LEU	LEU	ASN	GLU	ARG	THR	C225	R226	C227	D228	K229	P230	R231	R232
-----	-----	-----	-----	-----	-----	-----	-----	-----	-----	-----	-----	-----	-----	-----	-----	-----	-----	-----	-----	-----	------	------	------	------	------	------	------	------

4 Data and refinement statistics

Property	Value	Source
Space group	C 2 2 21	Depositor
Cell constants a, b, c, α , β , γ	110.25Å 139.52Å 106.04Å 90.00° 90.00° 90.00°	Depositor
Resolution (Å)	86.50 – 1.95 67.03 – 1.95	Depositor EDS
% Data completeness (in resolution range)	99.3 (86.50-1.95) 99.3 (67.03-1.95)	Depositor EDS
R_{merge}	0.06	Depositor
R_{sym}	(Not available)	Depositor
$\langle I/\sigma(I) \rangle$ ¹	3.40 (at 1.95Å)	Xtrriage
Refinement program	REFMAC 5.8.0135	Depositor
R, R_{free}	0.204 , 0.234 0.210 , 0.237	Depositor DCC
R_{free} test set	3006 reflections (5.04%)	wwPDB-VP
Wilson B-factor (Å ²)	23.3	Xtrriage
Anisotropy	0.478	Xtrriage
Bulk solvent k_{sol} (e/Å ³), B_{sol} (Å ²)	0.35 , 39.1	EDS
L-test for twinning ²	$\langle L \rangle = 0.51$, $\langle L^2 \rangle = 0.34$	Xtrriage
Estimated twinning fraction	No twinning to report.	Xtrriage
F_o, F_c correlation	0.95	EDS
Total number of atoms	5504	wwPDB-VP
Average B, all atoms (Å ²)	26.0	wwPDB-VP

Xtrriage's analysis on translational NCS is as follows: *The analyses of the Patterson function reveals a significant off-origin peak that is 50.15 % of the origin peak, indicating pseudo-translational symmetry. The chance of finding a peak of this or larger height randomly in a structure without pseudo-translational symmetry is equal to 6.7446e-05. The detected translational NCS is most likely also responsible for the elevated intensity ratio.*

¹Intensities estimated from amplitudes.

²Theoretical values of $\langle |L| \rangle$, $\langle L^2 \rangle$ for acentric reflections are 0.5, 0.333 respectively for untwinned datasets, and 0.375, 0.2 for perfectly twinned datasets.

5 Model quality [i](#)

5.1 Standard geometry [i](#)

Bond lengths and bond angles in the following residue types are not validated in this section: GOL, DIO

The Z score for a bond length (or angle) is the number of standard deviations the observed value is removed from the expected value. A bond length (or angle) with $|Z| > 5$ is considered an outlier worth inspection. RMSZ is the root-mean-square of all Z scores of the bond lengths (or angles).

Mol	Chain	Bond lengths		Bond angles	
		RMSZ	# Z >5	RMSZ	# Z >5
1	A	0.55	0/1320	0.76	2/1785 (0.1%)
1	B	0.53	0/1283	0.74	0/1737
1	C	0.54	0/1291	0.75	0/1747
1	D	0.53	0/1322	0.74	0/1788
2	E	0.44	0/70	0.95	0/89
2	F	0.60	0/35	1.26	0/44
2	G	0.60	0/35	1.10	0/44
All	All	0.54	0/5356	0.76	2/7234 (0.0%)

There are no bond length outliers.

All (2) bond angle outliers are listed below:

Mol	Chain	Res	Type	Atoms	Z	Observed(°)	Ideal(°)
1	A	303	ARG	NE-CZ-NH1	6.75	123.68	120.30
1	A	303	ARG	NE-CZ-NH2	-5.35	117.62	120.30

There are no chirality outliers.

There are no planarity outliers.

5.2 Too-close contacts [i](#)

In the following table, the Non-H and H(model) columns list the number of non-hydrogen atoms and hydrogen atoms in the chain respectively. The H(added) column lists the number of hydrogen atoms added and optimized by MolProbity. The Clashes column lists the number of clashes within the asymmetric unit, whereas Symm-Clashes lists symmetry related clashes.

Mol	Chain	Non-H	H(model)	H(added)	Clashes	Symm-Clashes
1	A	1280	0	1259	1	0
1	B	1255	0	1218	3	0

Continued on next page...

Continued from previous page...

Mol	Chain	Non-H	H(model)	H(added)	Clashes	Symm-Clashes
1	C	1260	0	1227	1	0
1	D	1282	0	1259	3	0
2	E	70	0	72	0	0
2	F	35	0	34	0	0
2	G	35	0	34	0	0
3	B	6	0	8	0	0
3	D	6	0	8	0	0
4	B	6	0	8	0	0
5	A	70	0	0	0	0
5	B	75	0	0	1	0
5	C	58	0	0	0	0
5	D	62	0	0	0	0
5	E	1	0	0	0	0
5	F	1	0	0	0	0
5	G	2	0	0	0	0
All	All	5504	0	5127	8	0

The all-atom clashscore is defined as the number of clashes found per 1000 atoms (including hydrogen atoms). The all-atom clashscore for this structure is 1.

All (8) close contacts within the same asymmetric unit are listed below, sorted by their clash magnitude.

Atom-1	Atom-2	Interatomic distance (Å)	Clash overlap (Å)
1:D:328:TYR:HB3	1:D:410[A]:ARG:HG2	1.96	0.48
1:B:336:LEU:HG	1:B:403:LEU:HG	1.95	0.47
1:B:376:ARG:NH1	5:B:602:HOH:O	2.39	0.47
1:B:338:MET:O	1:B:426:GLY:HA3	2.20	0.41
1:D:364[B]:GLU:HB2	1:D:408:ARG:HB2	2.03	0.41
1:A:308:GLN:O	1:A:317:GLY:HA2	2.21	0.41

There are no symmetry-related clashes.

5.3 Torsion angles [i](#)

5.3.1 Protein backbone [i](#)

In the following table, the Percentiles column shows the percent Ramachandran outliers of the chain as a percentile score with respect to all X-ray entries followed by that with respect to entries of similar resolution.

The Analysed column shows the number of residues for which the backbone conformation was analysed, and the total number of residues.

Mol	Chain	Analysed	Favoured	Allowed	Outliers	Percentiles	
1	A	158/156 (101%)	152 (96%)	6 (4%)	0	100	100
1	B	154/156 (99%)	146 (95%)	8 (5%)	0	100	100
1	C	155/156 (99%)	149 (96%)	6 (4%)	0	100	100
1	D	158/156 (101%)	151 (96%)	7 (4%)	0	100	100
2	E	6/28 (21%)	6 (100%)	0	0	100	100
2	F	2/28 (7%)	2 (100%)	0	0	100	100
2	G	2/28 (7%)	2 (100%)	0	0	100	100
All	All	635/708 (90%)	608 (96%)	27 (4%)	0	100	100

There are no Ramachandran outliers to report.

5.3.2 Protein sidechains [i](#)

In the following table, the Percentiles column shows the percent sidechain outliers of the chain as a percentile score with respect to all X-ray entries followed by that with respect to entries of similar resolution.

The Analysed column shows the number of residues for which the sidechain conformation was analysed, and the total number of residues.

Mol	Chain	Analysed	Rotameric	Outliers	Percentiles	
1	A	140/136 (103%)	138 (99%)	2 (1%)	67	62
1	B	136/136 (100%)	136 (100%)	0	100	100
1	C	137/136 (101%)	137 (100%)	0	100	100
1	D	140/136 (103%)	140 (100%)	0	100	100
2	E	8/27 (30%)	8 (100%)	0	100	100
2	F	3/27 (11%)	3 (100%)	0	100	100
2	G	3/27 (11%)	3 (100%)	0	100	100
All	All	567/625 (91%)	565 (100%)	2 (0%)	91	90

All (2) residues with a non-rotameric sidechain are listed below:

Mol	Chain	Res	Type
1	A	324	SER
1	A	429	VAL

Some sidechains can be flipped to improve hydrogen bonding and reduce clashes. All (2) such sidechains are listed below:

Mol	Chain	Res	Type
1	A	412	GLN
1	D	412	GLN

5.3.3 RNA [i](#)

There are no RNA molecules in this entry.

5.4 Non-standard residues in protein, DNA, RNA chains [i](#)

There are no non-standard protein/DNA/RNA residues in this entry.

5.5 Carbohydrates [i](#)

There are no carbohydrates in this entry.

5.6 Ligand geometry [i](#)

3 ligands are modelled in this entry.

In the following table, the Counts columns list the number of bonds (or angles) for which Mogul statistics could be retrieved, the number of bonds (or angles) that are observed in the model and the number of bonds (or angles) that are defined in the Chemical Component Dictionary. The Link column lists molecule types, if any, to which the group is linked. The Z score for a bond length (or angle) is the number of standard deviations the observed value is removed from the expected value. A bond length (or angle) with $|Z| > 2$ is considered an outlier worth inspection. RMSZ is the root-mean-square of all Z scores of the bond lengths (or angles).

Mol	Type	Chain	Res	Link	Bond lengths			Bond angles		
					Counts	RMSZ	$\# Z > 2$	Counts	RMSZ	$\# Z > 2$
4	GOL	B	502	-	5,5,5	0.35	0	5,5,5	0.04	0
3	DIO	D	501	-	6,6,6	0.54	0	6,6,6	0.51	0
3	DIO	B	501	-	6,6,6	0.55	0	6,6,6	0.59	0

In the following table, the Chirals column lists the number of chiral outliers, the number of chiral centers analysed, the number of these observed in the model and the number defined in the Chemical Component Dictionary. Similar counts are reported in the Torsion and Rings columns. '2' means no outliers of that kind were identified.

Mol	Type	Chain	Res	Link	Chirals	Torsions	Rings
4	GOL	B	502	-	-	2/4/4/4	-
3	DIO	D	501	-	-	-	0/1/1/1
3	DIO	B	501	-	-	-	0/1/1/1

There are no bond length outliers.

There are no bond angle outliers.

There are no chirality outliers.

All (2) torsion outliers are listed below:

Mol	Chain	Res	Type	Atoms
4	B	502	GOL	C1-C2-C3-O3
4	B	502	GOL	O2-C2-C3-O3

There are no ring outliers.

No monomer is involved in short contacts.

5.7 Other polymers [i](#)

There are no such residues in this entry.

5.8 Polymer linkage issues [i](#)

There are no chain breaks in this entry.

6 Fit of model and data

6.1 Protein, DNA and RNA chains

In the following table, the column labelled ‘#RSRZ> 2’ contains the number (and percentage) of RSRZ outliers, followed by percent RSRZ outliers for the chain as percentile scores relative to all X-ray entries and entries of similar resolution. The OWAB column contains the minimum, median, 95th percentile and maximum values of the occupancy-weighted average B-factor per residue. The column labelled ‘Q< 0.9’ lists the number of (and percentage) of residues with an average occupancy less than 0.9.

Mol	Chain	Analysed	<RSRZ>	#RSRZ>2	OWAB(Å ²)	Q<0.9
1	A	156/156 (100%)	0.02	2 (1%) 77 83	14, 23, 36, 41	2 (1%)
1	B	156/156 (100%)	-0.06	1 (0%) 89 93	16, 24, 36, 49	1 (0%)
1	C	156/156 (100%)	-0.13	2 (1%) 77 83	18, 24, 35, 46	0
1	D	156/156 (100%)	-0.15	1 (0%) 89 93	19, 25, 36, 49	0
2	E	8/28 (28%)	6.44	7 (87%) 0 0	44, 86, 87, 91	1 (12%)
2	F	4/28 (14%)	3.63	3 (75%) 0 0	47, 60, 70, 72	0
2	G	4/28 (14%)	4.41	3 (75%) 0 0	63, 79, 84, 86	0
All	All	640/708 (90%)	0.05	19 (2%) 50 59	14, 24, 38, 91	4 (0%)

All (19) RSRZ outliers are listed below:

Mol	Chain	Res	Type	RSRZ
2	E	227	CYS	10.3
2	E	229	LYS	8.5
2	G	230	PRO	7.9
2	E	226	ARG	7.9
2	E	225	CYS	7.8
2	E	228	ASP	7.2
2	G	229	LYS	6.5
2	F	230	PRO	6.0
2	E	230	PRO	6.0
1	D	429	VAL	4.0
2	F	231	ARG	4.0
2	F	229	LYS	3.3
1	A	429	VAL	2.9
2	E	231	ARG	2.8
1	A	403	LEU	2.5
1	C	429	VAL	2.5
1	C	322	LEU	2.3

Continued on next page...

Continued from previous page...

Mol	Chain	Res	Type	RSRZ
1	B	429	VAL	2.1
2	G	231	ARG	2.0

6.2 Non-standard residues in protein, DNA, RNA chains [i](#)

There are no non-standard protein/DNA/RNA residues in this entry.

6.3 Carbohydrates [i](#)

There are no carbohydrates in this entry.

6.4 Ligands [i](#)

In the following table, the Atoms column lists the number of modelled atoms in the group and the number defined in the chemical component dictionary. The B-factors column lists the minimum, median, 95th percentile and maximum values of B factors of atoms in the group. The column labelled 'Q<0.9' lists the number of atoms with occupancy less than 0.9.

Mol	Type	Chain	Res	Atoms	RSCC	RSR	B-factors(Å ²)	Q<0.9
4	GOL	B	502	6/6	0.76	0.14	56,58,59,61	0
3	DIO	B	501	6/6	0.92	0.11	29,29,30,31	0
3	DIO	D	501	6/6	0.94	0.13	27,29,29,30	0

6.5 Other polymers [i](#)

There are no such residues in this entry.