



Full wwPDB X-ray Structure Validation Report ⓘ

Aug 21, 2020 – 08:01 AM BST

PDB ID : 5DJX
Title : Fc Heterodimer Design 2.9 L368M/K370E + E357A/S364G
Authors : Atwell, S.; Leaver-Fay, A.; Froning, K.J.; Aldaz, H.; Pustilnik, A.; Lu, F.;
Huang, F.; Yuan, R.; Dhanani, S.H.; Chamberlain, A.K.; Fitchett, J.R.;
Gutierrez, B.; Hendle, J.; Demarest, S.J.; Kuhlman, B.
Deposited on : 2015-09-02
Resolution : 2.25 Å(reported)

This is a Full wwPDB X-ray Structure Validation Report for a publicly released PDB entry.

We welcome your comments at validation@mail.wwpdb.org

A user guide is available at

<https://www.wwpdb.org/validation/2017/XrayValidationReportHelp>

with specific help available everywhere you see the ⓘ symbol.

The following versions of software and data (see [references ⓘ](#)) were used in the production of this report:

MolProbity : 4.02b-467
Mogul : 1.8.5 (274361), CSD as541be (2020)
Xtriage (Phenix) : 1.13
EDS : 2.13.1
Percentile statistics : 20191225.v01 (using entries in the PDB archive December 25th 2019)
Refmac : 5.8.0158
CCP4 : 7.0.044 (Gargrove)
Ideal geometry (proteins) : Engh & Huber (2001)
Ideal geometry (DNA, RNA) : Parkinson et al. (1996)
Validation Pipeline (wwPDB-VP) : 2.13.1

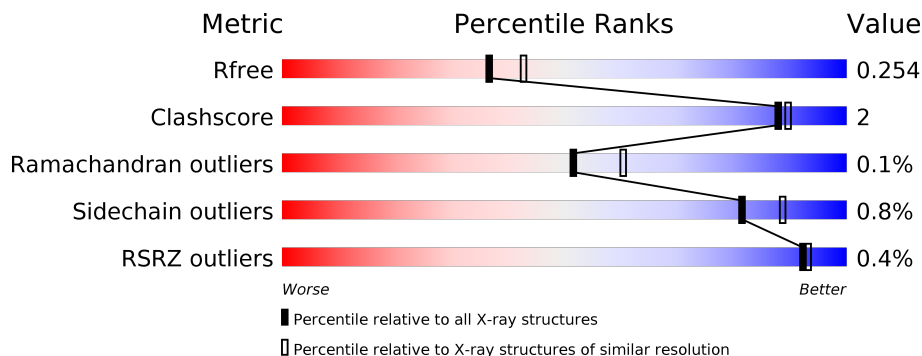
1 Overall quality at a glance

The following experimental techniques were used to determine the structure:

X-RAY DIFFRACTION

The reported resolution of this entry is 2.25 Å.

Percentile scores (ranging between 0-100) for global validation metrics of the entry are shown in the following graphic. The table shows the number of entries on which the scores are based.





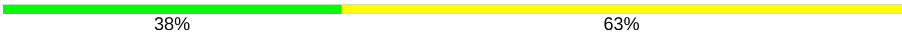
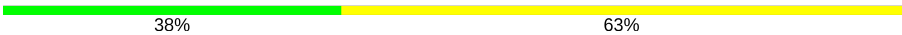
Metric	Whole archive (#Entries)	Similar resolution (#Entries, resolution range(Å))
R_{free}	130704	1377 (2.26-2.26)
Clashscore	141614	1487 (2.26-2.26)
Ramachandran outliers	138981	1449 (2.26-2.26)
Sidechain outliers	138945	1450 (2.26-2.26)
RSRZ outliers	127900	1356 (2.26-2.26)

The table below summarises the geometric issues observed across the polymeric chains and their fit to the electron density. The red, orange, yellow and green segments on the lower bar indicate the fraction of residues that contain outliers for ≥ 3 , 2, 1 and 0 types of geometric quality criteria respectively. A grey segment represents the fraction of residues that are not modelled. The numeric value for each fraction is indicated below the corresponding segment, with a dot representing fractions $\leq 5\%$. The upper red bar (where present) indicates the fraction of residues that have poor fit to the electron density. The numeric value is given above the bar.

Mol	Chain	Length	Quality of chain
1	A	227	
1	D	227	
2	B	240	
2	E	240	
3	C	13	
3	F	13	

Continued on next page...

Continued from previous page...

Mol	Chain	Length	Quality of chain
4	G	8	 38% 63%
4	H	8	 75% 25%
4	I	8	 38% 63%
4	J	8	 38% 63%

2 Entry composition [i](#)

There are 5 unique types of molecules in this entry. The entry contains 7406 atoms, of which 0 are hydrogens and 0 are deuteriums.

In the tables below, the ZeroOcc column contains the number of atoms modelled with zero occupancy, the AltConf column contains the number of residues with at least one atom in alternate conformation and the Trace column contains the number of residues modelled with at most 2 atoms.

- Molecule 1 is a protein called Ig gamma-1 chain C region.

Mol	Chain	Residues	Atoms					ZeroOcc	AltConf	Trace
			Total	C	N	O	S			
1	A	208	Total 1649	C 1048	N 273	O 320	S 8	0	0	0
1	D	208	Total 1652	C 1050	N 274	O 320	S 8	0	0	0

There are 8 discrepancies between the modelled and reference sequences:

Chain	Residue	Modelled	Actual	Comment	Reference
A	356	GLU	ASP	variant	UNP P01857
A	358	MET	LEU	variant	UNP P01857
A	368	MET	LEU	engineered mutation	UNP P01857
A	370	GLU	LYS	engineered mutation	UNP P01857
D	356	GLU	ASP	variant	UNP P01857
D	358	MET	LEU	variant	UNP P01857
D	368	MET	LEU	engineered mutation	UNP P01857
D	370	GLU	LYS	engineered mutation	UNP P01857

- Molecule 2 is a protein called Ig gamma-1 chain C region.

Mol	Chain	Residues	Atoms					ZeroOcc	AltConf	Trace
			Total	C	N	O	S			
2	B	207	Total 1614	C 1027	N 271	O 310	S 6	0	0	0
2	E	207	Total 1621	C 1031	N 271	O 313	S 6	0	1	0

There are 40 discrepancies between the modelled and reference sequences:

Chain	Residue	Modelled	Actual	Comment	Reference
B	208	HIS	-	expression tag	UNP P01857
B	209	HIS	-	expression tag	UNP P01857
B	210	HIS	-	expression tag	UNP P01857
B	211	HIS	-	expression tag	UNP P01857

Continued on next page...

Continued from previous page...

Chain	Residue	Modelled	Actual	Comment	Reference
B	212	HIS	-	expression tag	UNP P01857
B	213	HIS	-	expression tag	UNP P01857
B	214	HIS	-	expression tag	UNP P01857
B	215	HIS	-	expression tag	UNP P01857
B	216	SER	-	expression tag	UNP P01857
B	217	GLY	-	expression tag	UNP P01857
B	218	SER	-	expression tag	UNP P01857
B	219	GLY	-	expression tag	UNP P01857
B	220	SER	-	expression tag	UNP P01857
B	252	GLU	MET	engineered mutation	UNP P01857
B	253	ALA	ILE	engineered mutation	UNP P01857
B	356	GLU	ASP	variant	UNP P01857
B	357	ALA	GLU	engineered mutation	UNP P01857
B	358	MET	LEU	variant	UNP P01857
B	364	GLY	SER	engineered mutation	UNP P01857
B	435	ALA	HIS	engineered mutation	UNP P01857
E	208	HIS	-	expression tag	UNP P01857
E	209	HIS	-	expression tag	UNP P01857
E	210	HIS	-	expression tag	UNP P01857
E	211	HIS	-	expression tag	UNP P01857
E	212	HIS	-	expression tag	UNP P01857
E	213	HIS	-	expression tag	UNP P01857
E	214	HIS	-	expression tag	UNP P01857
E	215	HIS	-	expression tag	UNP P01857
E	216	SER	-	expression tag	UNP P01857
E	217	GLY	-	expression tag	UNP P01857
E	218	SER	-	expression tag	UNP P01857
E	219	GLY	-	expression tag	UNP P01857
E	220	SER	-	expression tag	UNP P01857
E	252	GLU	MET	engineered mutation	UNP P01857
E	253	ALA	ILE	engineered mutation	UNP P01857
E	356	GLU	ASP	variant	UNP P01857
E	357	ALA	GLU	engineered mutation	UNP P01857
E	358	MET	LEU	variant	UNP P01857
E	364	GLY	SER	engineered mutation	UNP P01857
E	435	ALA	HIS	engineered mutation	UNP P01857

- Molecule 3 is a protein called Fc-III peptide.

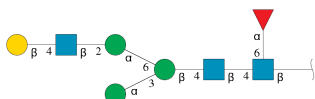
Mol	Chain	Residues	Atoms					ZeroOcc	AltConf	Trace
			Total	C	N	O	S			
3	C	13	107	69	17	19	2	0	0	0

Continued on next page...

Continued from previous page...

Mol	Chain	Residues	Atoms				ZeroOcc	AltConf	Trace	
			Total	C	N	O				S
3	F	13	103	67	17	17	2	0	0	0

- Molecule 4 is an oligosaccharide called beta-D-galactopyranose-(1-4)-2-acetamido-2-deoxy-beta-D-glucopyranose-(1-2)-alpha-D-mannopyranose-(1-6)-[alpha-D-mannopyranose-(1-3)]beta-D-mannopyranose-(1-4)-2-acetamido-2-deoxy-beta-D-glucopyranose-(1-4)-[alpha-L-fucopyranose-(1-6)]2-acetamido-2-deoxy-beta-D-glucopyranose.



Mol	Chain	Residues	Atoms				ZeroOcc	AltConf	Trace
			Total	C	N	O			
4	G	8	96	54	3	39	0	0	0
4	H	8	96	54	3	39	0	0	0
4	I	8	96	54	3	39	0	0	0
4	J	8	96	54	3	39	0	0	0

- Molecule 5 is water.

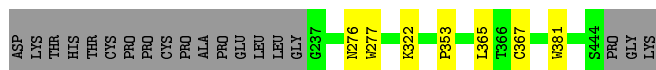
Mol	Chain	Residues	Atoms		ZeroOcc	AltConf
5	A	81	Total	O	0	0
			81	81		
5	B	57	Total	O	0	0
			57	57		
5	C	1	Total	O	0	0
			1	1		
5	D	76	Total	O	0	0
			76	76		
5	E	61	Total	O	0	0
			61	61		

3 Residue-property plots [i](#)


These plots are drawn for all protein, RNA, DNA and oligosaccharide chains in the entry. The first graphic for a chain summarises the proportions of the various outlier classes displayed in the second graphic. The second graphic shows the sequence view annotated by issues in geometry and electron density. Residues are color-coded according to the number of geometric quality criteria for which they contain at least one outlier: green = 0, yellow = 1, orange = 2 and red = 3 or more. A red dot above a residue indicates a poor fit to the electron density ($RSRZ > 2$). Stretches of 2 or more consecutive residues without any outlier are shown as a green connector. Residues present in the sample, but not in the model, are shown in grey.

- Molecule 1: Ig gamma-1 chain C region

Chain A:  89% 8%




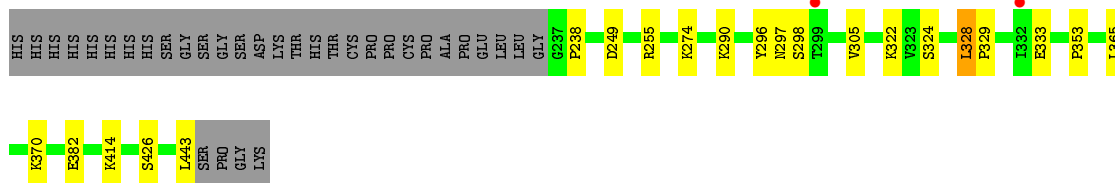
- Molecule 1: Ig gamma-1 chain C region

Chain D:  84% 7% 8%



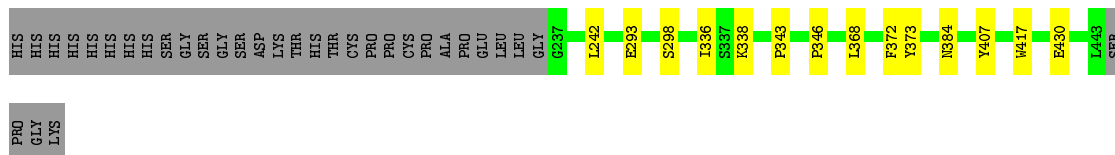
- Molecule 2: Ig gamma-1 chain C region

Chain B:  78% 8% 14%



- Molecule 2: Ig gamma-1 chain C region

Chain E:  80% 6% 14%

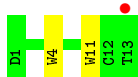
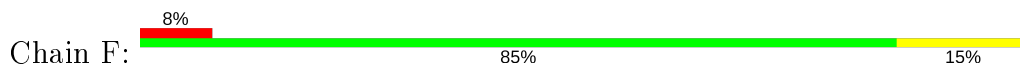


- Molecule 3: Fc-III peptide

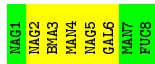
Chain C:  92% 8%



- Molecule 3: Fc-III peptide



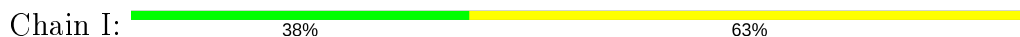
- Molecule 4: beta-D-galactopyranose-(1-4)-2-acetamido-2-deoxy-beta-D-glucopyranose-(1-2)-alpha-D-mannopyranose-(1-6)-[alpha-D-mannopyranose-(1-3)]beta-D-mannopyranose-(1-4)-2-acetamido-2-deoxy-beta-D-glucopyranose-(1-4)-[alpha-L-fucopyranose-(1-6)]2-acetamido-2-deoxy-beta-D-glucopyranose



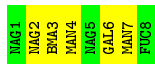
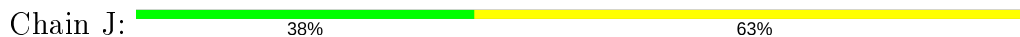
- Molecule 4: beta-D-galactopyranose-(1-4)-2-acetamido-2-deoxy-beta-D-glucopyranose-(1-2)-alpha-D-mannopyranose-(1-6)-[alpha-D-mannopyranose-(1-3)]beta-D-mannopyranose-(1-4)-2-acetamido-2-deoxy-beta-D-glucopyranose-(1-4)-[alpha-L-fucopyranose-(1-6)]2-acetamido-2-deoxy-beta-D-glucopyranose



- Molecule 4: beta-D-galactopyranose-(1-4)-2-acetamido-2-deoxy-beta-D-glucopyranose-(1-2)-alpha-D-mannopyranose-(1-6)-[alpha-D-mannopyranose-(1-3)]beta-D-mannopyranose-(1-4)-2-acetamido-2-deoxy-beta-D-glucopyranose-(1-4)-[alpha-L-fucopyranose-(1-6)]2-acetamido-2-deoxy-beta-D-glucopyranose



- Molecule 4: beta-D-galactopyranose-(1-4)-2-acetamido-2-deoxy-beta-D-glucopyranose-(1-2)-alpha-D-mannopyranose-(1-6)-[alpha-D-mannopyranose-(1-3)]beta-D-mannopyranose-(1-4)-2-acetamido-2-deoxy-beta-D-glucopyranose-(1-4)-[alpha-L-fucopyranose-(1-6)]2-acetamido-2-deoxy-beta-D-glucopyranose



4 Data and refinement statistics

Property	Value	Source
Space group	P 1	Depositor
Cell constants a, b, c, α , β , γ	59.88Å 65.61Å 78.28Å 88.97° 76.34° 88.00°	Depositor
Resolution (Å)	30.00 – 2.25 42.84 – 2.25	Depositor EDS
% Data completeness (in resolution range)	97.1 (30.00-2.25) 97.1 (42.84-2.25)	Depositor EDS
R_{merge}	(Not available)	Depositor
R_{sym}	0.11	Depositor
$\langle I/\sigma(I) \rangle$ ¹	2.03 (at 2.24Å)	Xtrriage
Refinement program	REFMAC 5.7.0017	Depositor
R, R_{free}	0.203 , 0.256 0.202 , 0.254	Depositor DCC
R_{free} test set	2708 reflections (5.08%)	wwPDB-VP
Wilson B-factor (Å ²)	27.3	Xtrriage
Anisotropy	0.018	Xtrriage
Bulk solvent k_{sol} (e/Å ³), B_{sol} (Å ²)	0.35 , 12.3	EDS
L-test for twinning ²	$\langle L \rangle = 0.48$, $\langle L^2 \rangle = 0.31$	Xtrriage
Estimated twinning fraction	0.097 for -h,k,-l	Xtrriage
F_o, F_c correlation	0.93	EDS
Total number of atoms	7406	wwPDB-VP
Average B, all atoms (Å ²)	28.0	wwPDB-VP

Xtrriage's analysis on translational NCS is as follows: *The largest off-origin peak in the Patterson function is 7.81% of the height of the origin peak. No significant pseudotranslation is detected.*

¹Intensities estimated from amplitudes.

²Theoretical values of $\langle |L| \rangle$, $\langle L^2 \rangle$ for acentric reflections are 0.5, 0.333 respectively for untwinned datasets, and 0.375, 0.2 for perfectly twinned datasets.

5 Model quality i

5.1 Standard geometry i

Bond lengths and bond angles in the following residue types are not validated in this section: MAN, GAL, BMA, NAG, FUC

The Z score for a bond length (or angle) is the number of standard deviations the observed value is removed from the expected value. A bond length (or angle) with $|Z| > 5$ is considered an outlier worth inspection. RMSZ is the root-mean-square of all Z scores of the bond lengths (or angles).

Mol	Chain	Bond lengths		Bond angles	
		RMSZ	# $ Z > 5$	RMSZ	# $ Z > 5$
1	A	0.51	1/1695 (0.1%)	0.54	0/2312
1	D	0.51	2/1698 (0.1%)	0.55	0/2315
2	B	0.49	0/1658	0.53	0/2264
2	E	0.49	1/1670 (0.1%)	0.54	0/2280
3	C	1.02	1/111 (0.9%)	0.61	0/151
3	F	1.05	2/107 (1.9%)	0.60	0/146
All	All	0.53	7/6939 (0.1%)	0.54	0/9468

All (7) bond length outliers are listed below:

Mol	Chain	Res	Type	Atoms	Z	Observed(Å)	Ideal(Å)
3	C	11	TRP	CD2-CE2	5.32	1.47	1.41
3	F	4	TRP	CD2-CE2	5.31	1.47	1.41
2	E	417	TRP	CD2-CE2	5.22	1.47	1.41
3	F	11	TRP	CD2-CE2	5.07	1.47	1.41
1	D	381	TRP	CD2-CE2	5.05	1.47	1.41
1	D	417	TRP	CD2-CE2	5.02	1.47	1.41
1	A	277	TRP	CD2-CE2	5.01	1.47	1.41

There are no bond angle outliers.

There are no chirality outliers.

There are no planarity outliers.

5.2 Too-close contacts i

In the following table, the Non-H and H(model) columns list the number of non-hydrogen atoms and hydrogen atoms in the chain respectively. The H(added) column lists the number of hydrogen atoms added and optimized by MolProbity. The Clashes column lists the number of clashes within the asymmetric unit, whereas Symm-Clashes lists symmetry related clashes.

Mol	Chain	Non-H	H(model)	H(added)	Clashes	Symm-Clashes
1	A	1649	0	1586	3	0
1	D	1652	0	1595	9	0
2	B	1614	0	1559	10	0
2	E	1621	0	1562	6	0
3	C	107	0	93	0	0
3	F	103	0	89	0	0
4	G	96	0	82	0	0
4	H	96	0	82	0	0
4	I	96	0	82	0	0
4	J	96	0	82	0	0
5	A	81	0	0	0	0
5	B	57	0	0	0	0
5	C	1	0	0	0	0
5	D	76	0	0	0	0
5	E	61	0	0	1	0
All	All	7406	0	6812	28	0

The all-atom clashscore is defined as the number of clashes found per 1000 atoms (including hydrogen atoms). The all-atom clashscore for this structure is 2.

All (28) close contacts within the same asymmetric unit are listed below, sorted by their clash magnitude.

Atom-1	Atom-2	Interatomic distance (Å)	Clash overlap (Å)
1:D:297:ASN:O	1:D:298:SER:HB3	1.89	0.71
1:D:238:PRO:HD2	1:D:328:LEU:HD13	1.75	0.69
1:D:297:ASN:O	1:D:298:SER:CB	2.54	0.55
1:D:242:LEU:HG	1:D:336:ILE:HG12	1.90	0.54
1:A:353:PRO:HD3	1:A:365:LEU:HD23	1.90	0.52
2:E:384:ASN:HA	5:E:655:HOH:O	2.10	0.50
2:E:242:LEU:HG	2:E:336:ILE:HG12	1.93	0.49
2:B:249:ASP:OD1	2:B:255:ARG:HD3	2.12	0.49
2:B:238:PRO:HD2	2:B:328:LEU:HD13	1.94	0.49
1:D:276:ASN:HB2	1:D:322:LYS:HB3	1.94	0.49
1:A:276:ASN:HB2	1:A:322:LYS:HB3	1.95	0.49
1:D:346:PRO:HB3	1:D:372:PHE:HB3	1.94	0.49
1:D:351:LEU:HB2	1:D:366:THR:HB	1.94	0.48
2:B:290:LYS:HE2	2:B:305:VAL:HG21	1.95	0.47
2:B:296:TYR:C	2:B:298:SER:H	2.17	0.47
2:B:274:LYS:HB3	2:B:324:SER:HB2	1.97	0.47
1:D:274:LYS:HB3	1:D:324:SER:HB2	1.95	0.47
2:E:338:LYS:HD2	2:E:430:GLU:OE1	2.16	0.46
2:B:353:PRO:HG3	2:B:365:LEU:HD23	1.97	0.46

Continued on next page...

Continued from previous page...

Atom-1	Atom-2	Interatomic distance (Å)	Clash overlap (Å)
1:A:367:CYS:HB2	1:A:381:TRP:CZ2	2.51	0.46
2:B:414:LYS:HB3	2:B:414:LYS:HE2	1.78	0.43
2:E:368:LEU:HD13	2:E:407:TYR:CZ	2.53	0.43
2:E:343:PRO:HA	2:E:373:TYR:O	2.18	0.43
2:B:382:GLU:OE1	2:B:426:SER:HB3	2.19	0.42
2:B:322:LYS:HG3	2:B:333:GLU:HG2	2.00	0.42
1:D:417:TRP:HH2	1:D:441:LEU:HG	1.85	0.41
2:E:346:PRO:HB3	2:E:372:PHE:HB3	2.02	0.41
2:B:328:LEU:HA	2:B:329:PRO:HD3	1.95	0.41

There are no symmetry-related clashes.

5.3 Torsion angles [i](#)

5.3.1 Protein backbone [i](#)

In the following table, the Percentiles column shows the percent Ramachandran outliers of the chain as a percentile score with respect to all X-ray entries followed by that with respect to entries of similar resolution.

The Analysed column shows the number of residues for which the backbone conformation was analysed, and the total number of residues.

Mol	Chain	Analysed	Favoured	Allowed	Outliers	Percentiles	
1	A	206/227 (91%)	205 (100%)	1 (0%)	0	100	100
1	D	206/227 (91%)	203 (98%)	3 (2%)	0	100	100
2	B	205/240 (85%)	200 (98%)	4 (2%)	1 (0%)	29	29
2	E	206/240 (86%)	204 (99%)	2 (1%)	0	100	100
3	C	11/13 (85%)	11 (100%)	0	0	100	100
3	F	11/13 (85%)	10 (91%)	1 (9%)	0	100	100
All	All	845/960 (88%)	833 (99%)	11 (1%)	1 (0%)	51	60

All (1) Ramachandran outliers are listed below:

Mol	Chain	Res	Type
2	B	297	ASN

5.3.2 Protein sidechains [i](#)

In the following table, the Percentiles column shows the percent sidechain outliers of the chain as a percentile score with respect to all X-ray entries followed by that with respect to entries of similar resolution.

The Analysed column shows the number of residues for which the sidechain conformation was analysed, and the total number of residues.

Mol	Chain	Analysed	Rotameric	Outliers	Percentiles	
1	A	190/210 (90%)	190 (100%)	0	100	100
1	D	191/210 (91%)	190 (100%)	1 (0%)	88	92
2	B	182/217 (84%)	179 (98%)	3 (2%)	62	73
2	E	183/217 (84%)	181 (99%)	2 (1%)	73	82
3	C	11/11 (100%)	11 (100%)	0	100	100
3	F	10/11 (91%)	10 (100%)	0	100	100
All	All	767/876 (88%)	761 (99%)	6 (1%)	81	88

All (6) residues with a non-rotameric sidechain are listed below:

Mol	Chain	Res	Type
2	B	328	LEU
2	B	370	LYS
2	B	443	LEU
1	D	328	LEU
2	E	293	GLU
2	E	298	SER

Some sidechains can be flipped to improve hydrogen bonding and reduce clashes. All (12) such sidechains are listed below:

Mol	Chain	Res	Type
1	A	342	GLN
1	A	386	GLN
2	B	361	ASN
2	B	389	ASN
2	B	418	GLN
1	D	386	GLN
1	D	418	GLN
1	D	438	GLN
2	E	361	ASN
2	E	421	ASN
2	E	434	ASN

Continued on next page...

Continued from previous page...

Mol	Chain	Res	Type
3	F	5	HIS

5.3.3 RNA [i](#)

There are no RNA molecules in this entry.

5.4 Non-standard residues in protein, DNA, RNA chains [i](#)

There are no non-standard protein/DNA/RNA residues in this entry.

5.5 Carbohydrates [i](#)

32 monosaccharides are modelled in this entry.

In the following table, the Counts columns list the number of bonds (or angles) for which Mogul statistics could be retrieved, the number of bonds (or angles) that are observed in the model and the number of bonds (or angles) that are defined in the Chemical Component Dictionary. The Link column lists molecule types, if any, to which the group is linked. The Z score for a bond length (or angle) is the number of standard deviations the observed value is removed from the expected value. A bond length (or angle) with $|Z| > 2$ is considered an outlier worth inspection. RMSZ is the root-mean-square of all Z scores of the bond lengths (or angles).

Mol	Type	Chain	Res	Link	Bond lengths			Bond angles		
					Counts	RMSZ	# Z > 2	Counts	RMSZ	# Z > 2
4	NAG	G	1	1,4	14,14,15	0.62	0	17,19,21	0.62	0
4	NAG	G	2	4	14,14,15	0.55	0	17,19,21	1.04	1 (5%)
4	BMA	G	3	4	11,11,12	0.26	0	15,15,17	1.39	2 (13%)
4	MAN	G	4	4	11,11,12	0.58	0	15,15,17	1.29	2 (13%)
4	NAG	G	5	4	14,14,15	0.64	0	17,19,21	1.01	1 (5%)
4	GAL	G	6	4	11,11,12	0.59	0	15,15,17	1.01	1 (6%)
4	MAN	G	7	4	11,11,12	0.63	0	15,15,17	0.80	0
4	FUC	G	8	4	10,10,11	0.66	0	14,14,16	0.69	0
4	NAG	H	1	2,4	14,14,15	0.47	0	17,19,21	0.79	0
4	NAG	H	2	4	14,14,15	0.59	0	17,19,21	1.01	0
4	BMA	H	3	4	11,11,12	0.37	0	15,15,17	1.63	4 (26%)
4	MAN	H	4	4	11,11,12	0.63	0	15,15,17	0.79	0
4	NAG	H	5	4	14,14,15	0.58	0	17,19,21	0.79	0
4	GAL	H	6	4	11,11,12	0.65	0	15,15,17	0.87	0
4	MAN	H	7	4	11,11,12	0.58	0	15,15,17	1.84	6 (40%)
4	FUC	H	8	4	10,10,11	0.68	0	14,14,16	0.64	0

Mol	Type	Chain	Res	Link	Bond lengths			Bond angles		
					Counts	RMSZ	# Z > 2	Counts	RMSZ	# Z > 2
4	NAG	I	1	1,4	14,14,15	0.64	0	17,19,21	0.90	1 (5%)
4	NAG	I	2	4	14,14,15	0.60	0	17,19,21	0.84	1 (5%)
4	BMA	I	3	4	11,11,12	0.31	0	15,15,17	1.04	2 (13%)
4	MAN	I	4	4	11,11,12	0.61	0	15,15,17	0.95	1 (6%)
4	NAG	I	5	4	14,14,15	0.60	0	17,19,21	0.87	0
4	GAL	I	6	4	11,11,12	0.63	0	15,15,17	0.88	1 (6%)
4	MAN	I	7	4	11,11,12	0.63	0	15,15,17	0.95	0
4	FUC	I	8	4	10,10,11	0.77	0	14,14,16	0.67	0
4	NAG	J	1	2,4	14,14,15	0.61	0	17,19,21	0.72	0
4	NAG	J	2	4	14,14,15	0.51	0	17,19,21	1.23	1 (5%)
4	BMA	J	3	4	11,11,12	0.40	0	15,15,17	1.07	1 (6%)
4	MAN	J	4	4	11,11,12	0.66	0	15,15,17	0.91	1 (6%)
4	NAG	J	5	4	14,14,15	0.53	0	17,19,21	0.72	0
4	GAL	J	6	4	11,11,12	0.65	0	15,15,17	0.90	1 (6%)
4	MAN	J	7	4	11,11,12	0.60	0	15,15,17	0.96	1 (6%)
4	FUC	J	8	4	10,10,11	0.63	0	14,14,16	0.63	0

In the following table, the Chirals column lists the number of chiral outliers, the number of chiral centers analysed, the number of these observed in the model and the number defined in the Chemical Component Dictionary. Similar counts are reported in the Torsion and Rings columns. '-' means no outliers of that kind were identified.

Mol	Type	Chain	Res	Link	Chirals	Torsions	Rings
4	NAG	G	1	1,4	-	0/6/23/26	0/1/1/1
4	NAG	G	2	4	-	0/6/23/26	0/1/1/1
4	BMA	G	3	4	-	0/2/19/22	0/1/1/1
4	MAN	G	4	4	-	0/2/19/22	0/1/1/1
4	NAG	G	5	4	-	0/6/23/26	0/1/1/1
4	GAL	G	6	4	-	0/2/19/22	0/1/1/1
4	MAN	G	7	4	-	2/2/19/22	0/1/1/1
4	FUC	G	8	4	-	-	0/1/1/1
4	NAG	H	1	2,4	-	0/6/23/26	0/1/1/1
4	NAG	H	2	4	-	0/6/23/26	0/1/1/1
4	BMA	H	3	4	-	0/2/19/22	0/1/1/1
4	MAN	H	4	4	-	2/2/19/22	0/1/1/1
4	NAG	H	5	4	-	0/6/23/26	0/1/1/1
4	GAL	H	6	4	-	2/2/19/22	0/1/1/1
4	MAN	H	7	4	-	2/2/19/22	0/1/1/1
4	FUC	H	8	4	-	-	0/1/1/1

Continued on next page...

Continued from previous page...

Mol	Type	Chain	Res	Link	Chirals	Torsions	Rings
4	NAG	I	1	1,4	-	0/6/23/26	0/1/1/1
4	NAG	I	2	4	-	0/6/23/26	0/1/1/1
4	BMA	I	3	4	-	0/2/19/22	0/1/1/1
4	MAN	I	4	4	-	0/2/19/22	0/1/1/1
4	NAG	I	5	4	-	0/6/23/26	0/1/1/1
4	GAL	I	6	4	-	2/2/19/22	0/1/1/1
4	MAN	I	7	4	-	2/2/19/22	0/1/1/1
4	FUC	I	8	4	-	-	0/1/1/1
4	NAG	J	1	2,4	-	0/6/23/26	0/1/1/1
4	NAG	J	2	4	-	0/6/23/26	0/1/1/1
4	BMA	J	3	4	-	0/2/19/22	0/1/1/1
4	MAN	J	4	4	-	1/2/19/22	0/1/1/1
4	NAG	J	5	4	-	0/6/23/26	0/1/1/1
4	GAL	J	6	4	-	0/2/19/22	0/1/1/1
4	MAN	J	7	4	-	0/2/19/22	0/1/1/1
4	FUC	J	8	4	-	-	0/1/1/1

There are no bond length outliers.

All (28) bond angle outliers are listed below:

Mol	Chain	Res	Type	Atoms	Z	Observed(°)	Ideal(°)
4	H	7	MAN	C1-O5-C5	4.32	118.04	112.19
4	H	3	BMA	C1-C2-C3	4.24	114.88	109.67
4	J	2	NAG	C1-O5-C5	3.89	117.47	112.19
4	G	4	MAN	C1-O5-C5	3.49	116.92	112.19
4	G	3	BMA	C1-O5-C5	3.37	116.76	112.19
4	G	2	NAG	C1-O5-C5	3.18	116.50	112.19
4	G	3	BMA	C1-C2-C3	3.02	113.38	109.67
4	J	3	BMA	C1-O5-C5	2.85	116.05	112.19
4	I	4	MAN	C1-O5-C5	2.79	115.97	112.19
4	H	7	MAN	O5-C5-C6	2.74	111.49	107.20
4	H	7	MAN	O5-C1-C2	2.58	114.75	110.77
4	I	3	BMA	C1-O5-C5	2.58	115.69	112.19
4	H	7	MAN	C3-C4-C5	2.52	114.74	110.24
4	G	5	NAG	C4-C3-C2	2.52	114.72	111.02
4	J	6	GAL	O5-C5-C6	2.30	110.81	107.20
4	H	7	MAN	C1-C2-C3	2.27	112.46	109.67
4	J	7	MAN	C1-C2-C3	2.20	112.37	109.67
4	H	3	BMA	C2-C3-C4	2.20	114.70	110.89
4	G	6	GAL	O5-C5-C6	2.11	110.50	107.20
4	J	4	MAN	O2-C2-C3	-2.11	105.92	110.14

Continued on next page...

Continued from previous page...

Mol	Chain	Res	Type	Atoms	Z	Observed(°)	Ideal(°)
4	G	4	MAN	O2-C2-C3	-2.09	105.94	110.14
4	I	1	NAG	O5-C1-C2	-2.08	108.01	111.29
4	I	6	GAL	O5-C5-C6	2.07	110.45	107.20
4	H	3	BMA	O3-C3-C4	-2.06	105.58	110.35
4	I	2	NAG	C2-N2-C7	-2.05	119.98	122.90
4	H	7	MAN	C2-C3-C4	2.03	114.40	110.89
4	I	3	BMA	C1-C2-C3	2.03	112.16	109.67
4	H	3	BMA	C1-O5-C5	2.02	114.93	112.19

There are no chirality outliers.

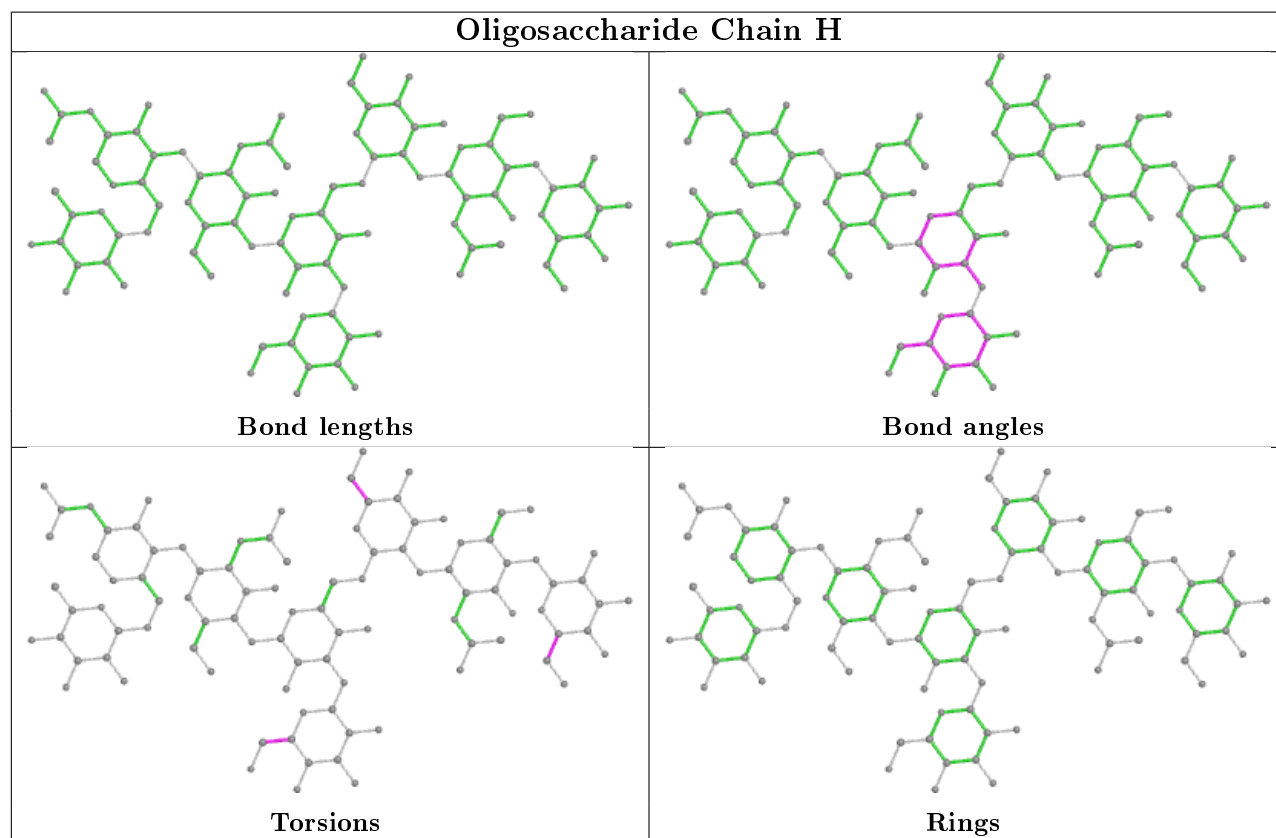
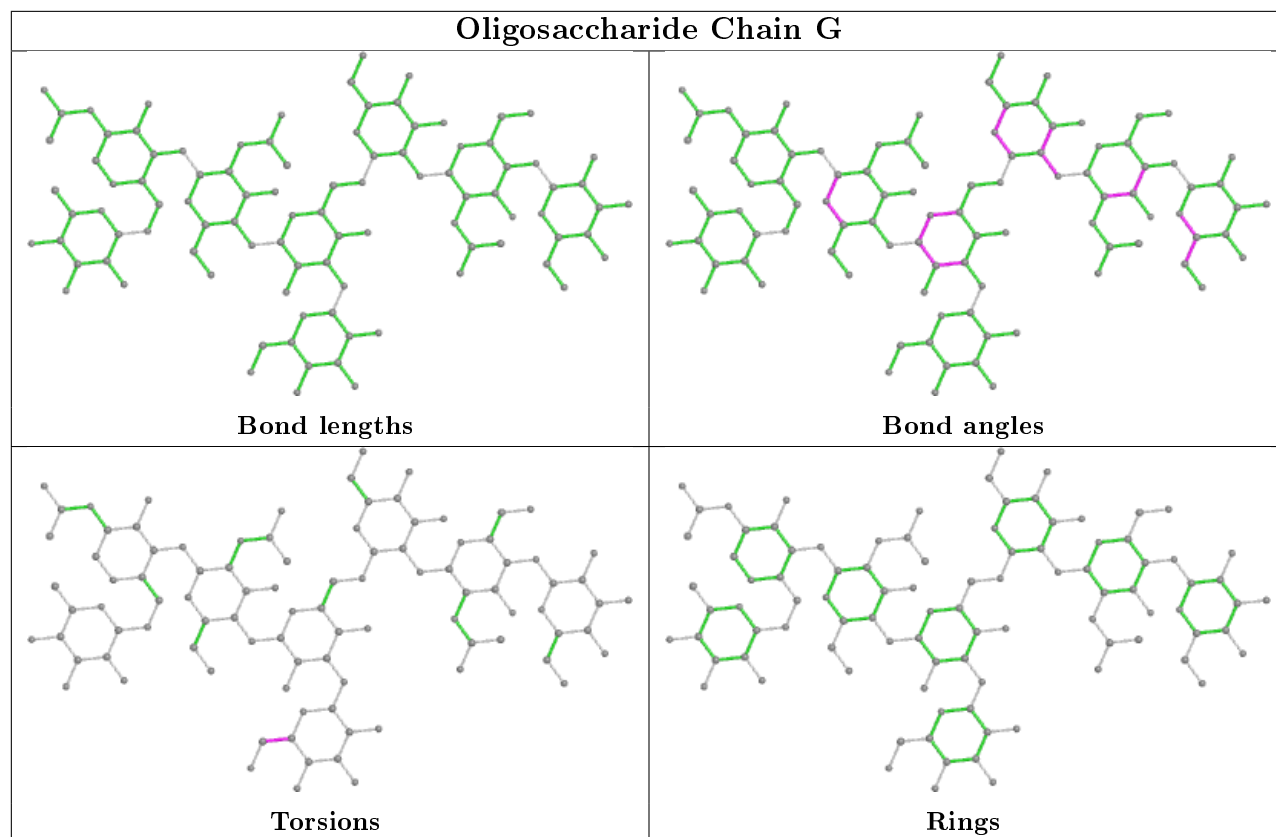
All (13) torsion outliers are listed below:

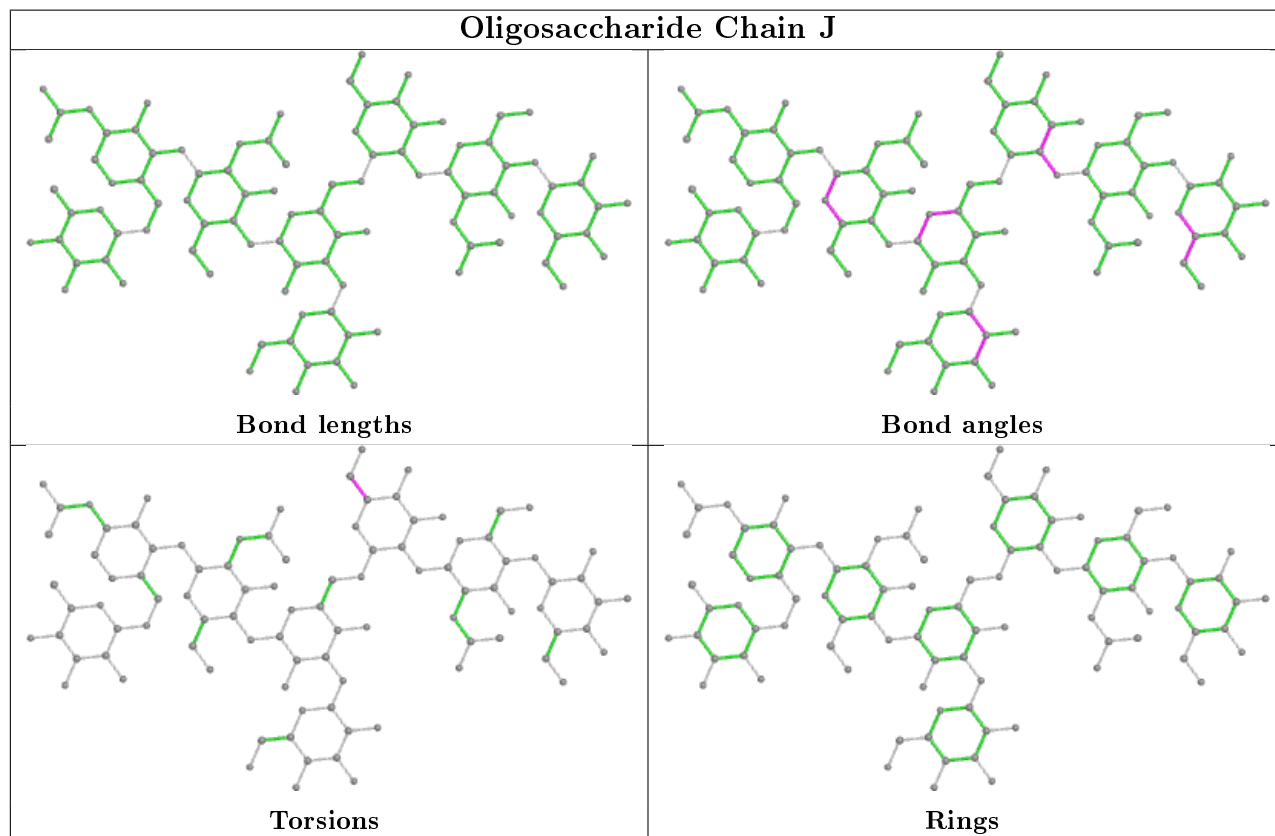
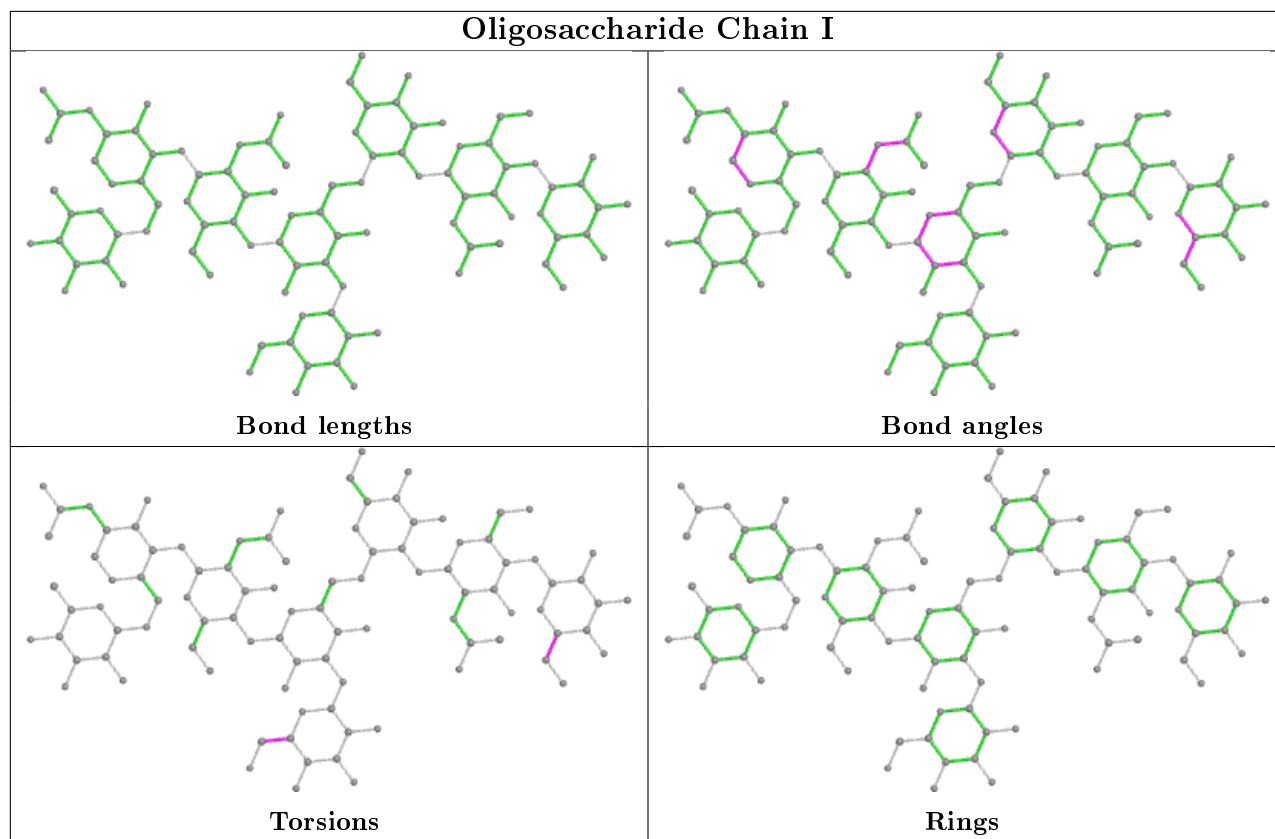
Mol	Chain	Res	Type	Atoms
4	H	6	GAL	O5-C5-C6-O6
4	G	7	MAN	C4-C5-C6-O6
4	I	7	MAN	C4-C5-C6-O6
4	H	6	GAL	C4-C5-C6-O6
4	G	7	MAN	O5-C5-C6-O6
4	H	4	MAN	O5-C5-C6-O6
4	H	7	MAN	O5-C5-C6-O6
4	H	4	MAN	C4-C5-C6-O6
4	I	7	MAN	O5-C5-C6-O6
4	I	6	GAL	C4-C5-C6-O6
4	J	4	MAN	O5-C5-C6-O6
4	I	6	GAL	O5-C5-C6-O6
4	H	7	MAN	C4-C5-C6-O6

There are no ring outliers.

No monomer is involved in short contacts.

The following is a two-dimensional graphical depiction of Mogul quality analysis of bond lengths, bond angles, torsion angles, and ring geometry for oligosaccharide.





5.6 Ligand geometry [i](#)

There are no ligands in this entry.

5.7 Other polymers [i](#)

There are no such residues in this entry.

5.8 Polymer linkage issues [i](#)

There are no chain breaks in this entry.

6 Fit of model and data [i](#)

6.1 Protein, DNA and RNA chains [i](#)

In the following table, the column labelled '#RSRZ> 2' contains the number (and percentage) of RSRZ outliers, followed by percent RSRZ outliers for the chain as percentile scores relative to all X-ray entries and entries of similar resolution. The OWAB column contains the minimum, median, 95th percentile and maximum values of the occupancy-weighted average B-factor per residue. The column labelled 'Q< 0.9' lists the number of (and percentage) of residues with an average occupancy less than 0.9.

Mol	Chain	Analysed	<RSRZ>	#RSRZ>2	OWAB(Å ²)	Q<0.9
1	A	208/227 (91%)	-0.49	0 100 100	14, 23, 34, 57	0
1	D	208/227 (91%)	-0.51	0 100 100	15, 23, 37, 46	0
2	B	207/240 (86%)	-0.35	2 (0%) 82 84	13, 29, 58, 74	0
2	E	207/240 (86%)	-0.49	0 100 100	14, 27, 41, 55	0
3	C	13/13 (100%)	-0.08	0 100 100	18, 27, 40, 40	0
3	F	13/13 (100%)	0.01	1 (7%) 13 14	27, 40, 46, 57	0
All	All	856/960 (89%)	-0.45	3 (0%) 92 93	13, 25, 43, 74	0

All (3) RSRZ outliers are listed below:

Mol	Chain	Res	Type	RSRZ
2	B	299	THR	2.9
3	F	13	THR	2.3
2	B	332	ILE	2.1

6.2 Non-standard residues in protein, DNA, RNA chains [i](#)

There are no non-standard protein/DNA/RNA residues in this entry.

6.3 Carbohydrates [i](#)

In the following table, the Atoms column lists the number of modelled atoms in the group and the number defined in the chemical component dictionary. The B-factors column lists the minimum, median, 95th percentile and maximum values of B factors of atoms in the group. The column labelled 'Q< 0.9' lists the number of atoms with occupancy less than 0.9.

Mol	Type	Chain	Res	Atoms	RSCC	RSR	B-factors(Å ²)	Q<0.9
4	MAN	J	7	11/12	0.80	0.15	61,63,71,76	0

Continued on next page...

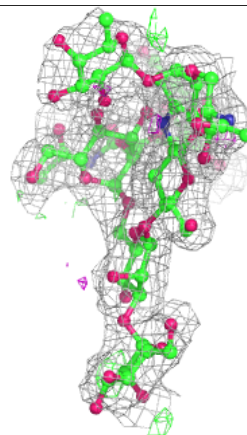
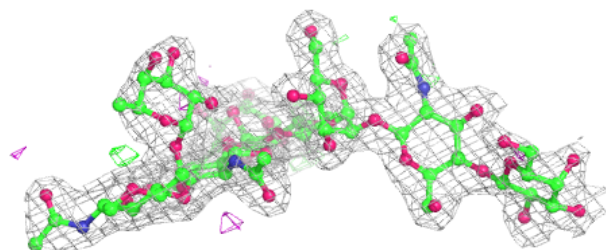
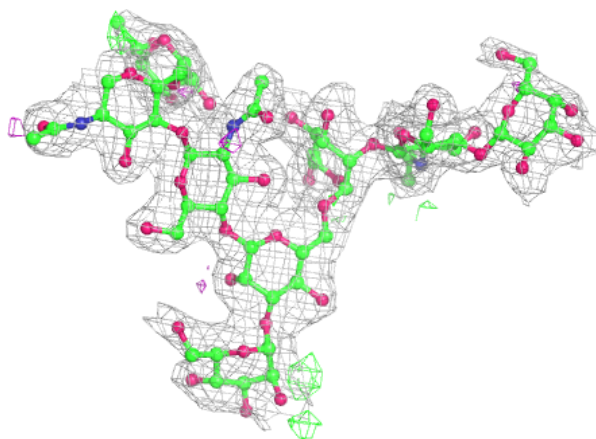
Continued from previous page...

Mol	Type	Chain	Res	Atoms	RSCC	RSR	B-factors(\AA^2)	Q<0.9
4	GAL	J	6	11/12	0.82	0.34	48,57,68,74	0
4	FUC	J	8	10/11	0.84	0.35	68,76,83,85	0
4	GAL	H	6	11/12	0.85	0.26	44,59,66,68	0
4	FUC	H	8	10/11	0.85	0.18	61,71,75,76	0
4	MAN	G	7	11/12	0.86	0.13	53,57,63,75	0
4	GAL	I	6	11/12	0.87	0.22	41,46,53,53	0
4	NAG	H	5	14/15	0.88	0.10	53,57,60,61	0
4	GAL	G	6	11/12	0.89	0.20	41,49,53,54	0
4	MAN	H	4	11/12	0.89	0.14	57,61,65,66	0
4	MAN	H	7	11/12	0.89	0.13	59,61,70,71	0
4	MAN	I	7	11/12	0.92	0.09	43,46,53,56	0
4	FUC	G	8	10/11	0.92	0.20	43,48,52,54	0
4	NAG	H	1	14/15	0.93	0.13	52,57,60,63	0
4	NAG	H	2	14/15	0.94	0.11	42,47,49,50	0
4	NAG	I	5	14/15	0.94	0.09	30,35,39,44	0
4	BMA	H	3	11/12	0.94	0.11	46,51,56,58	0
4	NAG	J	2	14/15	0.95	0.14	32,38,47,50	0
4	BMA	I	3	11/12	0.95	0.10	31,35,47,48	0
4	BMA	J	3	11/12	0.95	0.08	37,42,47,57	0
4	NAG	J	5	14/15	0.95	0.10	35,39,52,54	0
4	MAN	G	4	11/12	0.95	0.11	30,33,37,39	0
4	BMA	G	3	11/12	0.96	0.10	31,36,50,51	0
4	NAG	G	5	14/15	0.96	0.10	35,38,42,47	0
4	MAN	J	4	11/12	0.96	0.09	35,37,42,45	0
4	FUC	I	8	10/11	0.96	0.14	33,38,42,45	0
4	MAN	I	4	11/12	0.96	0.09	31,35,40,40	0
4	NAG	J	1	14/15	0.96	0.11	35,41,51,66	0
4	NAG	I	1	14/15	0.97	0.12	25,28,32,36	0
4	NAG	I	2	14/15	0.97	0.10	25,29,32,34	0
4	NAG	G	1	14/15	0.98	0.10	29,30,38,39	0
4	NAG	G	2	14/15	0.98	0.09	24,28,30,33	0

The following is a graphical depiction of the model fit to experimental electron density for oligosaccharide. Each fit is shown from different orientation to approximate a three-dimensional view.

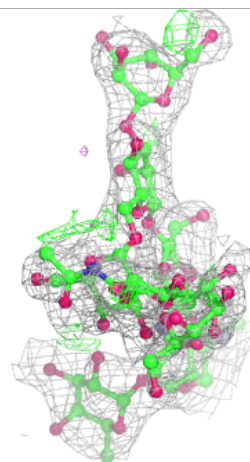
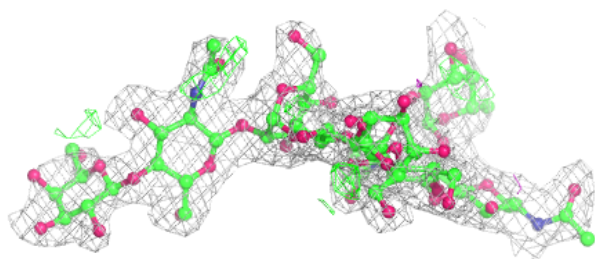
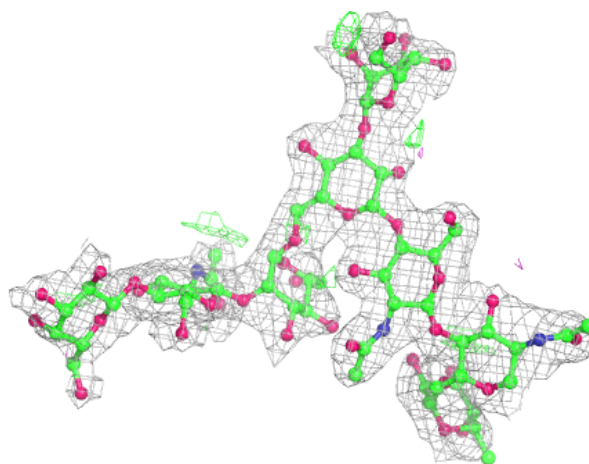
Electron density around Chain G:

$2mF_o-DF_c$ (at 0.7 rmsd) in gray
 mF_o-DF_c (at 3 rmsd) in purple (negative)
and green (positive)



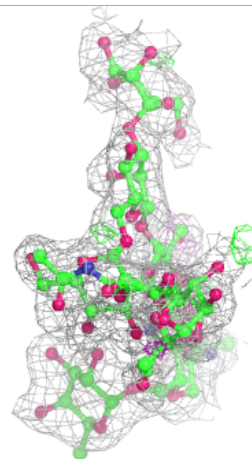
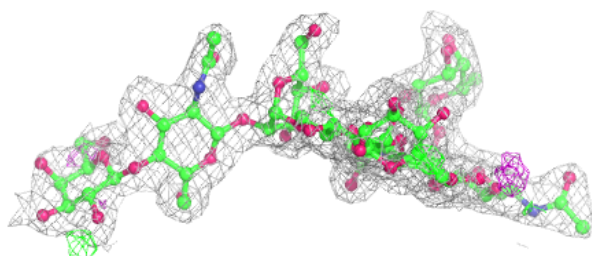
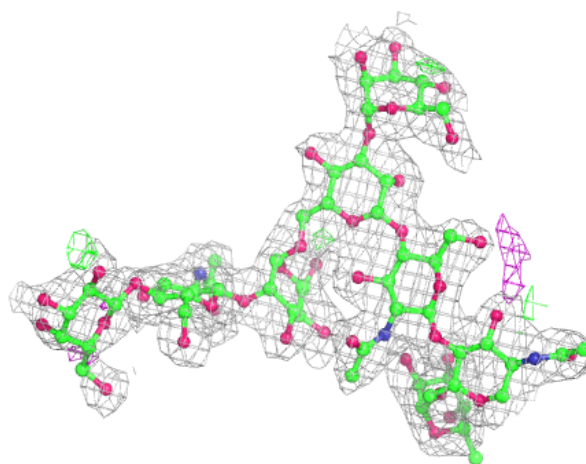
Electron density around Chain H:

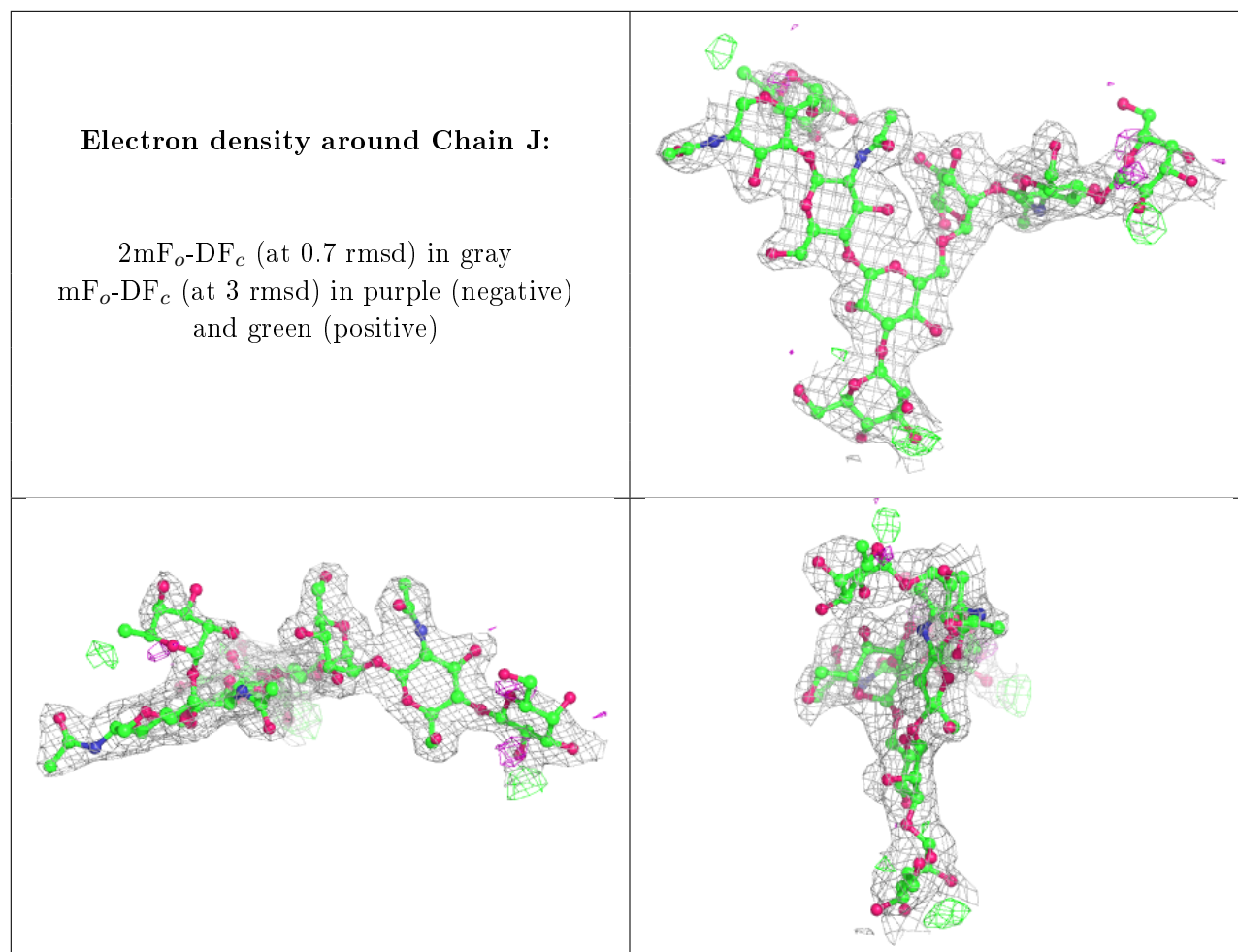
$2mF_o-DF_c$ (at 0.7 rmsd) in gray
 mF_o-DF_c (at 3 rmsd) in purple (negative)
and green (positive)



Electron density around Chain I:

$2mF_o-DF_c$ (at 0.7 rmsd) in gray
 mF_o-DF_c (at 3 rmsd) in purple (negative)
and green (positive)





6.4 Ligands [i](#)

There are no ligands in this entry.

6.5 Other polymers [i](#)

There are no such residues in this entry.