



# Full wwPDB X-ray Structure Validation Report ⓘ

Sep 19, 2023 – 06:51 AM EDT

PDB ID : 5DHG  
Title : The crystal structure of nociceptin/orphanin FQ peptide receptor (NOP) in complex with C-35 (PSI Community Target)  
Authors : Miller, R.L.; Thompson, A.A.; Trapella, C.; Guerrini, R.; Malfacini, D.; Patel, N.; Han, G.W.; Cherezov, V.; Calo, G.; Katritch, V.; Stevens, R.C.; GPCR Network (GPCR)  
Deposited on : 2015-08-30  
Resolution : 3.00 Å(reported)

This is a Full wwPDB X-ray Structure Validation Report for a publicly released PDB entry.

We welcome your comments at [validation@mail.wwpdb.org](mailto:validation@mail.wwpdb.org)

A user guide is available at

<https://www.wwpdb.org/validation/2017/XrayValidationReportHelp>

with specific help available everywhere you see the ⓘ symbol.

The types of validation reports are described at

<http://www.wwpdb.org/validation/2017/FAQs#types>.

---

The following versions of software and data (see [references](#) ①) were used in the production of this report:

MolProbity : 4.02b-467  
Mogul : 1.8.5 (274361), CSD as541be (2020)  
Xtrriage (Phenix) : 1.13  
EDS : 2.35.1  
buster-report : 1.1.7 (2018)  
Percentile statistics : 20191225.v01 (using entries in the PDB archive December 25th 2019)  
Refmac : 5.8.0158  
CCP4 : 7.0.044 (Gargrove)  
Ideal geometry (proteins) : Engh & Huber (2001)  
Ideal geometry (DNA, RNA) : Parkinson et al. (1996)  
Validation Pipeline (wwPDB-VP) : 2.35.1

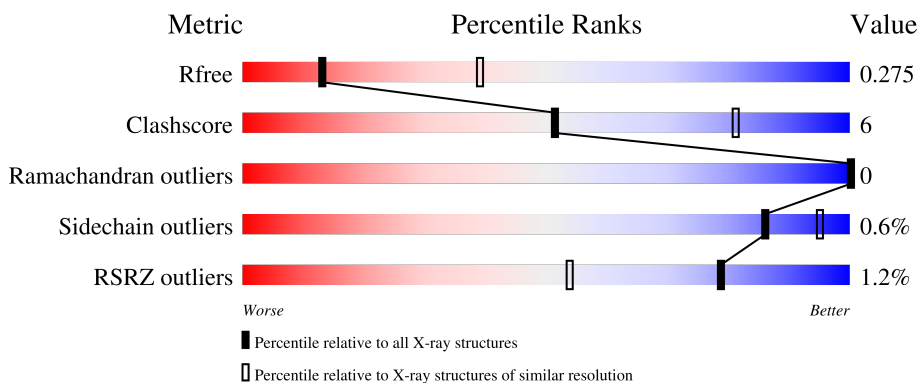
# 1 Overall quality at a glance

The following experimental techniques were used to determine the structure:

*X-RAY DIFFRACTION*

The reported resolution of this entry is 3.00 Å.

Percentile scores (ranging between 0-100) for global validation metrics of the entry are shown in the following graphic. The table shows the number of entries on which the scores are based.



Metric	Whole archive (#Entries)	Similar resolution (#Entries, resolution range(Å))
$R_{free}$	130704	2092 (3.00-3.00)
Clashscore	141614	2416 (3.00-3.00)
Ramachandran outliers	138981	2333 (3.00-3.00)
Sidechain outliers	138945	2336 (3.00-3.00)
RSRZ outliers	127900	1990 (3.00-3.00)

The table below summarises the geometric issues observed across the polymeric chains and their fit to the electron density. The red, orange, yellow and green segments of the lower bar indicate the fraction of residues that contain outliers for  $\geq 3$ , 2, 1 and 0 types of geometric quality criteria respectively. A grey segment represents the fraction of residues that are not modelled. The numeric value for each fraction is indicated below the corresponding segment, with a dot representing fractions  $\leq 5\%$ . The upper red bar (where present) indicates the fraction of residues that have poor fit to the electron density. The numeric value is given above the bar.

Mol	Chain	Length	Quality of chain
1	A	424	
1	B	424	

## 2 Entry composition [i](#)

There are 4 unique types of molecules in this entry. The entry contains 5071 atoms, of which 0 are hydrogens and 0 are deuteriums.

In the tables below, the ZeroOcc column contains the number of atoms modelled with zero occupancy, the AltConf column contains the number of residues with at least one atom in alternate conformation and the Trace column contains the number of residues modelled with at most 2 atoms.

- Molecule 1 is a protein called Soluble cytochrome b562,Nociceptin receptor.

Mol	Chain	Residues	Atoms					ZeroOcc	AltConf	Trace
			Total	C	N	O	S			
1	A	281	2139	1408	349	365	17	0	0	0
1	B	379	2813	1842	455	497	19	0	0	0

There are 48 discrepancies between the modelled and reference sequences:

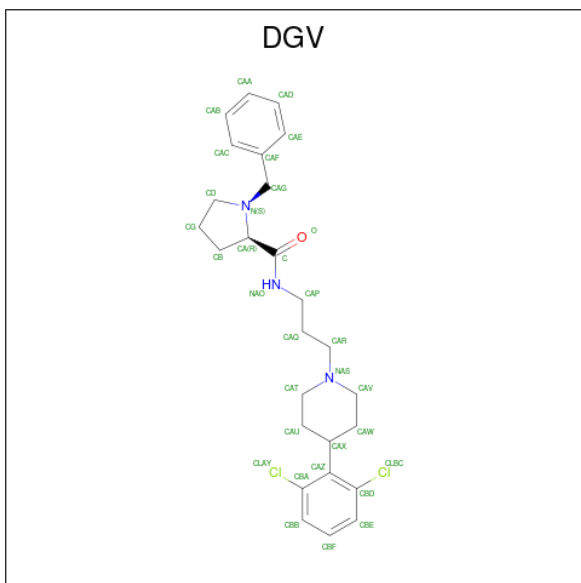
Chain	Residue	Modelled	Actual	Comment	Reference
A	-73	ASP	-	expression tag	UNP P0ABE7
A	-72	TYR	-	expression tag	UNP P0ABE7
A	-71	LYS	-	expression tag	UNP P0ABE7
A	-70	ASP	-	expression tag	UNP P0ABE7
A	-69	ASP	-	expression tag	UNP P0ABE7
A	-68	ASP	-	expression tag	UNP P0ABE7
A	-67	ASP	-	expression tag	UNP P0ABE7
A	-66	GLY	-	expression tag	UNP P0ABE7
A	-65	ALA	-	expression tag	UNP P0ABE7
A	-64	PRO	-	expression tag	UNP P0ABE7
A	-57	TRP	MET	engineered mutation	UNP P0ABE7
A	38	ILE	HIS	engineered mutation	UNP P0ABE7
A	42	LEU	ARG	engineered mutation	UNP P0ABE7
A	340	GLY	-	expression tag	UNP P41146
A	341	ARG	-	expression tag	UNP P41146
A	342	PRO	-	expression tag	UNP P41146
A	343	LEU	-	expression tag	UNP P41146
A	344	GLU	-	expression tag	UNP P41146
A	345	VAL	-	expression tag	UNP P41146
A	346	LEU	-	expression tag	UNP P41146
A	347	PHE	-	expression tag	UNP P41146
A	348	GLN	-	expression tag	UNP P41146
A	349	GLY	-	expression tag	UNP P41146
A	350	PRO	-	expression tag	UNP P41146
B	991	ASP	-	expression tag	UNP P0ABE7

*Continued on next page...*

Continued from previous page...

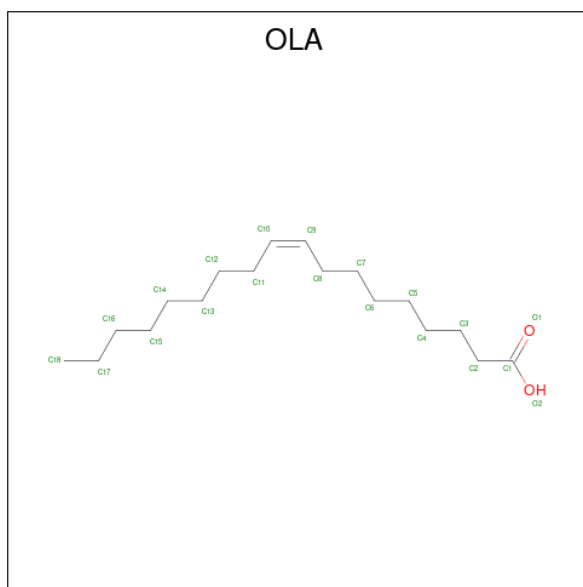
Chain	Residue	Modelled	Actual	Comment	Reference
B	992	TYR	-	expression tag	UNP P0ABE7
B	993	LYS	-	expression tag	UNP P0ABE7
B	994	ASP	-	expression tag	UNP P0ABE7
B	995	ASP	-	expression tag	UNP P0ABE7
B	996	ASP	-	expression tag	UNP P0ABE7
B	997	ASP	-	expression tag	UNP P0ABE7
B	998	GLY	-	expression tag	UNP P0ABE7
B	999	ALA	-	expression tag	UNP P0ABE7
B	1000	PRO	-	expression tag	UNP P0ABE7
B	1007	TRP	MET	engineered mutation	UNP P0ABE7
B	1102	ILE	HIS	engineered mutation	UNP P0ABE7
B	1106	LEU	ARG	engineered mutation	UNP P0ABE7
B	1404	GLY	-	expression tag	UNP P41146
B	1405	ARG	-	expression tag	UNP P41146
B	1406	PRO	-	expression tag	UNP P41146
B	1407	LEU	-	expression tag	UNP P41146
B	1408	GLU	-	expression tag	UNP P41146
B	1409	VAL	-	expression tag	UNP P41146
B	1410	LEU	-	expression tag	UNP P41146
B	1411	PHE	-	expression tag	UNP P41146
B	1412	GLN	-	expression tag	UNP P41146
B	1413	GLY	-	expression tag	UNP P41146
B	1414	PRO	-	expression tag	UNP P41146

- Molecule 2 is 1-benzyl-N-{3-[4-(2,6-dichlorophenyl)piperidin-1-yl]propyl}-D-prolinamide (three-letter code: DGV) (formula: C<sub>26</sub>H<sub>33</sub>Cl<sub>2</sub>N<sub>3</sub>O).



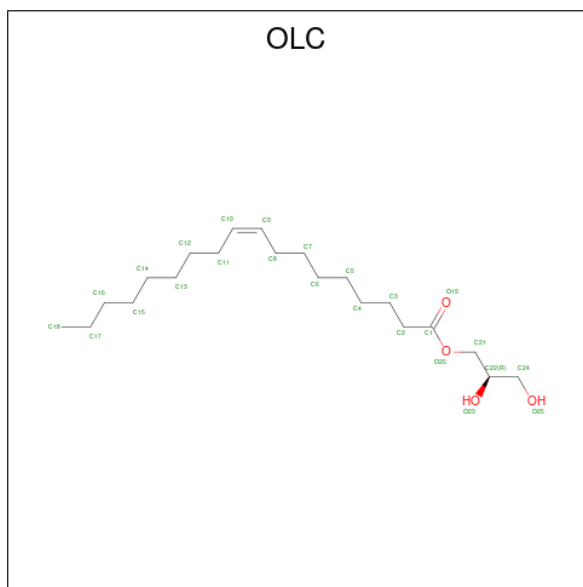
Mol	Chain	Residues	Atoms				ZeroOcc	AltConf	
2	A	1	Total	C	Cl	N	O	0	0
			32	26	2	3	1		
2	B	1	Total	C	Cl	N	O	0	0
			32	26	2	3	1		

- Molecule 3 is OLEIC ACID (three-letter code: OLA) (formula:  $C_{18}H_{34}O_2$ ).



Mol	Chain	Residues	Atoms		ZeroOcc	AltConf
3	A	1	Total	C O	0	0
			6	4 2		
3	A	1	Total	C O	0	0
			11	9 2		
3	A	1	Total	C O	0	0
			6	4 2		
3	B	1	Total	C O	0	0
			12	10 2		
3	B	1	Total	C O	0	0
			9	7 2		

- Molecule 4 is (2R)-2,3-dihydroxypropyl (9Z)-octadec-9-enoate (three-letter code: OLC) (formula:  $C_{21}H_{40}O_4$ ).



Mol	Chain	Residues	Atoms			ZeroOcc	AltConf
4	B	1	Total	C	O	0	0
			11	7	4		





## 4 Data and refinement statistics

Property	Value	Source
Space group	P 1 21 1	Depositor
Cell constants a, b, c, $\alpha$ , $\beta$ , $\gamma$	42.08Å 171.70Å 66.49Å 90.00° 103.25° 90.00°	Depositor
Resolution (Å)	29.63 – 3.00 29.63 – 2.97	Depositor EDS
% Data completeness (in resolution range)	90.8 (29.63-3.00) 81.3 (29.63-2.97)	Depositor EDS
$R_{merge}$	(Not available)	Depositor
$R_{sym}$	0.19	Depositor
$\langle I/\sigma(I) \rangle$ <sup>1</sup>	1.43 (at 2.95Å)	Xtrriage
Refinement program	PHENIX (1.10_2142: ???)	Depositor
R, $R_{free}$	0.235 , 0.275 0.235 , 0.275	Depositor DCC
$R_{free}$ test set	843 reflections (4.99%)	wwPDB-VP
Wilson B-factor (Å <sup>2</sup> )	75.8	Xtrriage
Anisotropy	0.185	Xtrriage
Bulk solvent $k_{sol}$ (e/Å <sup>3</sup> ), $B_{sol}$ (Å <sup>2</sup> )	0.30 , 78.5	EDS
L-test for twinning <sup>2</sup>	$\langle  L  \rangle = 0.47$ , $\langle L^2 \rangle = 0.30$	Xtrriage
Estimated twinning fraction	No twinning to report.	Xtrriage
$F_o, F_c$ correlation	0.92	EDS
Total number of atoms	5071	wwPDB-VP
Average B, all atoms (Å <sup>2</sup> )	86.0	wwPDB-VP

Xtrriage's analysis on translational NCS is as follows: *The largest off-origin peak in the Patterson function is 6.68% of the height of the origin peak. No significant pseudotranslation is detected.*

<sup>1</sup>Intensities estimated from amplitudes.

<sup>2</sup>Theoretical values of  $\langle |L| \rangle$ ,  $\langle L^2 \rangle$  for acentric reflections are 0.5, 0.333 respectively for untwinned datasets, and 0.375, 0.2 for perfectly twinned datasets.

## 5 Model quality

### 5.1 Standard geometry

Bond lengths and bond angles in the following residue types are not validated in this section: OLA, DGV, OLC

The Z score for a bond length (or angle) is the number of standard deviations the observed value is removed from the expected value. A bond length (or angle) with  $|Z| > 5$  is considered an outlier worth inspection. RMSZ is the root-mean-square of all Z scores of the bond lengths (or angles).

Mol	Chain	Bond lengths		Bond angles	
		RMSZ	# Z  >5	RMSZ	# Z  >5
1	A	0.27	0/2185	0.42	0/2985
1	B	0.27	0/2869	0.44	0/3929
All	All	0.27	0/5054	0.43	0/6914

There are no bond length outliers.

There are no bond angle outliers.

There are no chirality outliers.

There are no planarity outliers.

### 5.2 Too-close contacts

In the following table, the Non-H and H(model) columns list the number of non-hydrogen atoms and hydrogen atoms in the chain respectively. The H(added) column lists the number of hydrogen atoms added and optimized by MolProbity. The Clashes column lists the number of clashes within the asymmetric unit, whereas Symm-Clashes lists symmetry-related clashes.

Mol	Chain	Non-H	H(model)	H(added)	Clashes	Symm-Clashes
1	A	2139	0	2200	25	0
1	B	2813	0	2801	27	0
2	A	32	0	33	7	0
2	B	32	0	33	4	0
3	A	23	0	22	0	0
3	B	21	0	25	1	0
4	B	11	0	11	0	0
All	All	5071	0	5125	57	0

The all-atom clashscore is defined as the number of clashes found per 1000 atoms (including hydrogen atoms). The all-atom clashscore for this structure is 6.

All (57) close contacts within the same asymmetric unit are listed below, sorted by their clash magnitude.

Atom-1	Atom-2	Interatomic distance (Å)	Clash overlap (Å)
1:A:155:PRO:HG3	1:A:249:SER:HB2	1.67	0.75
1:A:103:THR:HG21	1:A:126:VAL:HG13	1.80	0.62
2:A:1201:DG V:H29	2:A:1201:DG V:NAO	2.15	0.61
1:A:131:TYR:HA	2:A:1201:DG V:CLBC	2.38	0.61
1:A:200:CYS:HB3	2:A:1201:DG V:H22	1.84	0.59
1:B:1245:VAL:O	1:B:1249:VAL:HG23	2.03	0.58
1:B:1167:THR:CG2	1:B:1171:GLN:HE21	2.17	0.58
1:A:223:SER:OG	2:A:1201:DG V:H2	2.05	0.56
1:B:1227:THR:HG22	1:B:1229:SER:H	1.71	0.55
1:B:1167:THR:HG21	1:B:1171:GLN:HE21	1.72	0.55
2:A:1201:DG V:CLBC	2:A:1201:DG V:H6	2.43	0.54
1:B:1184:ASN:OD1	1:B:1255:ALA:N	2.33	0.54
1:A:55:VAL:HG21	1:A:112:LEU:HG	1.89	0.54
1:B:1119:VAL:HG21	1:B:1176:LEU:HG	1.90	0.54
1:A:103:THR:CG2	1:A:107:GLN:HE21	2.21	0.53
1:A:103:THR:HG22	1:A:107:GLN:HE21	1.73	0.53
2:A:1201:DG V:H29	2:A:1201:DG V:H20	1.72	0.53
1:A:103:THR:HG22	1:A:107:GLN:HG3	1.90	0.53
1:B:1192:ALA:HB2	1:B:1250:ALA:HB2	1.91	0.52
1:A:148:ARG:HH12	1:A:258:LEU:HD23	1.75	0.52
1:A:148:ARG:HD2	1:A:261:ILE:HG22	1.93	0.51
1:B:1169:PRO:O	1:B:1173:THR:HG23	2.09	0.51
1:A:235:TYR:HA	1:A:238:MET:HE2	1.92	0.51
1:B:1220:ILE:HG13	1:B:1221:ARG:N	2.26	0.51
1:A:105:PRO:O	1:A:109:THR:HG23	2.11	0.50
1:B:1171:GLN:HA	2:B:1501:DG V:H24	1.94	0.50
1:B:1014:LEU:HA	1:B:1017:ILE:HD12	1.94	0.49
1:B:1174:ASP:HB3	2:B:1501:DG V:H23	1.93	0.49
2:B:1501:DG V:H6	2:B:1501:DG V:CLBC	2.49	0.49
1:A:113:LEU:HD12	1:A:117:PRO:HG3	1.94	0.49
1:A:313:CYS:O	1:A:316:PRO:HD2	2.15	0.47
1:A:195:ASP:O	1:A:197:GLU:N	2.43	0.47
1:B:1012:ASP:O	1:B:1016:VAL:HG23	2.15	0.46
1:B:1370:ALA:O	1:B:1374:VAL:HG23	2.14	0.46
1:A:115:PHE:CE2	1:A:117:PRO:HB3	2.51	0.46
1:A:308:GLY:O	1:A:311:ASN:HB3	2.16	0.46
1:B:1053:PRO:O	1:B:1062:ARG:NH1	2.49	0.45
1:B:1164:VAL:O	1:B:1167:THR:HB	2.16	0.45
1:A:330:PHE:O	1:A:331:ARG:HG3	2.16	0.45
1:B:1321:ASN:O	1:B:1325:ILE:HG13	2.16	0.45

*Continued on next page...*

Continued from previous page...

Atom-1	Atom-2	Interatomic distance (Å)	Clash overlap (Å)
1:B:1007:TRP:CE2	1:B:1106:LEU:HD11	2.52	0.44
1:A:261:ILE:O	1:A:265:VAL:HG23	2.17	0.44
1:B:1232:GLN:HE21	3:B:1503:OLA:C1	2.31	0.44
1:B:1103:GLN:O	1:B:1106:LEU:HB2	2.17	0.44
1:B:1355:GLN:HG3	1:B:1356:PRO:HD2	2.00	0.44
1:A:131:TYR:HE1	2:A:1201:DGV:H33	1.83	0.43
1:A:148:ARG:HH12	1:A:258:LEU:CD2	2.32	0.43
1:A:191:ALA:HA	1:A:199:GLU:O	2.19	0.43
1:B:1211:ASP:CG	1:B:1226:ARG:HE	2.22	0.43
1:B:1280:ALA:HB2	1:B:1351:GLY:HA3	1.99	0.43
1:B:1058:MET:O	1:B:1061:PHE:HB3	2.19	0.42
1:B:1085:LYS:O	1:B:1088:GLN:HB2	2.20	0.42
1:B:1331:VAL:O	1:B:1335:VAL:HG23	2.20	0.42
1:A:103:THR:HG23	1:A:126:VAL:HG22	2.02	0.41
1:A:306:ALA:O	1:A:310:VAL:HG23	2.20	0.41
1:B:1161:ASP:O	1:B:1165:LEU:HG	2.21	0.41
2:B:1501:DGV:CAF	2:B:1501:DGV:C	3.00	0.40

There are no symmetry-related clashes.

## 5.3 Torsion angles [i](#)

### 5.3.1 Protein backbone [i](#)

In the following table, the Percentiles column shows the percent Ramachandran outliers of the chain as a percentile score with respect to all X-ray entries followed by that with respect to entries of similar resolution.

The Analysed column shows the number of residues for which the backbone conformation was analysed, and the total number of residues.

Mol	Chain	Analysed	Favoured	Allowed	Outliers	Percentiles	
1	A	277/424 (65%)	269 (97%)	8 (3%)	0	100	100
1	B	371/424 (88%)	361 (97%)	10 (3%)	0	100	100
All	All	648/848 (76%)	630 (97%)	18 (3%)	0	100	100

There are no Ramachandran outliers to report.

### 5.3.2 Protein sidechains [i](#)

In the following table, the Percentiles column shows the percent sidechain outliers of the chain as a percentile score with respect to all X-ray entries followed by that with respect to entries of similar resolution.

The Analysed column shows the number of residues for which the sidechain conformation was analysed, and the total number of residues.

Mol	Chain	Analysed	Rotameric	Outliers	Percentiles	
1	A	231/355 (65%)	230 (100%)	1 (0%)	91	97
1	B	288/355 (81%)	286 (99%)	2 (1%)	84	94
All	All	519/710 (73%)	516 (99%)	3 (1%)	86	95

All (3) residues with a non-rotameric sidechain are listed below:

Mol	Chain	Res	Type
1	A	197	GLU
1	B	1109	PHE
1	B	1377	CYS

Sometimes sidechains can be flipped to improve hydrogen bonding and reduce clashes. All (3) such sidechains are listed below:

Mol	Chain	Res	Type
1	A	87	ASN
1	A	107	GLN
1	B	1171	GLN

### 5.3.3 RNA [i](#)

There are no RNA molecules in this entry.

## 5.4 Non-standard residues in protein, DNA, RNA chains [i](#)

There are no non-standard protein/DNA/RNA residues in this entry.

## 5.5 Carbohydrates [i](#)

There are no monosaccharides in this entry.

## 5.6 Ligand geometry

8 ligands are modelled in this entry.

In the following table, the Counts columns list the number of bonds (or angles) for which Mogul statistics could be retrieved, the number of bonds (or angles) that are observed in the model and the number of bonds (or angles) that are defined in the Chemical Component Dictionary. The Link column lists molecule types, if any, to which the group is linked. The Z score for a bond length (or angle) is the number of standard deviations the observed value is removed from the expected value. A bond length (or angle) with  $|Z| > 2$  is considered an outlier worth inspection. RMSZ is the root-mean-square of all Z scores of the bond lengths (or angles).

Mol	Type	Chain	Res	Link	Bond lengths			Bond angles		
					Counts	RMSZ	# $ Z  > 2$	Counts	RMSZ	# $ Z  > 2$
2	DGV	A	1201	-	35,35,35	3.40	16 (45%)	47,47,47	2.01	8 (17%)
4	OLC	B	1502	-	10,10,24	1.41	1 (10%)	11,11,25	1.05	1 (9%)
3	OLA	B	1504	-	8,8,19	0.69	0	8,8,19	1.36	2 (25%)
3	OLA	A	1204	-	5,5,19	0.88	0	5,5,19	1.33	0
2	DGV	B	1501	-	35,35,35	3.36	15 (42%)	47,47,47	2.01	11 (23%)
3	OLA	B	1503	-	11,11,19	0.65	0	11,11,19	1.19	1 (9%)
3	OLA	A	1203	-	10,10,19	0.65	0	10,10,19	1.30	3 (30%)
3	OLA	A	1202	-	5,5,19	0.87	0	5,5,19	1.49	1 (20%)

In the following table, the Chirals column lists the number of chiral outliers, the number of chiral centers analysed, the number of these observed in the model and the number defined in the Chemical Component Dictionary. Similar counts are reported in the Torsion and Rings columns. '-' means no outliers of that kind were identified.

Mol	Type	Chain	Res	Link	Chirals	Torsions	Rings
2	DGV	A	1201	-	-	8/19/39/39	0/4/4/4
4	OLC	B	1502	-	-	1/10/10/24	-
3	OLA	B	1504	-	-	3/6/6/17	-
3	OLA	A	1204	-	-	2/3/3/17	-
2	DGV	B	1501	-	-	10/19/39/39	0/4/4/4
3	OLA	B	1503	-	-	6/9/9/17	-
3	OLA	A	1203	-	-	7/8/8/17	-
3	OLA	A	1202	-	-	0/3/3/17	-

All (32) bond length outliers are listed below:

Mol	Chain	Res	Type	Atoms	Z	Observed(Å)	Ideal(Å)
2	A	1201	DGV	C-NAO	8.01	1.51	1.33

*Continued on next page...*

*Continued from previous page...*

Mol	Chain	Res	Type	Atoms	Z	Observed(Å)	Ideal(Å)
2	B	1501	DGV	CAR-NAS	-7.85	1.29	1.47
2	A	1201	DGV	CAR-NAS	-7.68	1.29	1.47
2	B	1501	DGV	C-NAO	7.42	1.49	1.33
2	A	1201	DGV	CAD-CAE	7.21	1.54	1.38
2	B	1501	DGV	CAD-CAE	7.16	1.54	1.38
2	B	1501	DGV	CAC-CAF	6.75	1.53	1.38
2	A	1201	DGV	CAC-CAF	6.61	1.53	1.38
2	B	1501	DGV	CAT-NAS	-6.10	1.30	1.46
2	A	1201	DGV	CAT-NAS	-6.03	1.30	1.46
2	B	1501	DGV	CAB-CAA	5.76	1.53	1.38
2	A	1201	DGV	CAB-CAA	5.74	1.53	1.38
2	B	1501	DGV	CAV-NAS	-4.50	1.34	1.46
4	B	1502	OLC	O20-C1	4.24	1.45	1.33
2	A	1201	DGV	CAV-NAS	-4.07	1.35	1.46
2	B	1501	DGV	CAE-CAF	-3.59	1.31	1.38
2	A	1201	DGV	CAE-CAF	-3.53	1.31	1.38
2	A	1201	DGV	CA-C	3.19	1.60	1.52
2	A	1201	DGV	CAB-CAC	-3.18	1.32	1.38
2	B	1501	DGV	CAB-CAC	-3.13	1.32	1.38
2	A	1201	DGV	O-C	-2.93	1.17	1.23
2	B	1501	DGV	O-C	-2.72	1.18	1.23
2	A	1201	DGV	CAZ-CAX	2.70	1.58	1.51
2	B	1501	DGV	CAZ-CAX	2.63	1.58	1.51
2	B	1501	DGV	CA-C	2.60	1.59	1.52
2	B	1501	DGV	CAA-CAD	-2.60	1.31	1.38
2	A	1201	DGV	CAA-CAD	-2.58	1.31	1.38
2	B	1501	DGV	CBD-CLBC	2.16	1.78	1.73
2	A	1201	DGV	CAW-CAV	2.09	1.58	1.52
2	B	1501	DGV	CBA-CLAY	2.07	1.78	1.73
2	A	1201	DGV	CBD-CLBC	2.06	1.78	1.73
2	A	1201	DGV	CAP-NAO	2.04	1.50	1.46

All (27) bond angle outliers are listed below:

Mol	Chain	Res	Type	Atoms	Z	Observed(°)	Ideal(°)
2	A	1201	DGV	CA-C-NAO	8.19	134.14	116.11
2	B	1501	DGV	CA-C-NAO	6.64	130.72	116.11
2	B	1501	DGV	CAF-CAG-N	5.18	121.24	112.75
2	A	1201	DGV	O-C-NAO	-4.50	113.33	122.99
2	A	1201	DGV	CAF-CAG-N	4.29	119.78	112.75
2	B	1501	DGV	O-C-NAO	-3.89	114.65	122.99
2	B	1501	DGV	CAR-NAS-CAV	-3.63	101.95	111.23

*Continued on next page...*

Continued from previous page...

Mol	Chain	Res	Type	Atoms	Z	Observed(°)	Ideal(°)
2	B	1501	DGV	CAW-CAX-CAZ	-3.61	106.63	114.60
2	B	1501	DGV	CAU-CAT-NAS	3.48	116.51	111.11
2	A	1201	DGV	O-C-CA	-3.26	112.52	120.63
2	A	1201	DGV	CAV-CAW-CAX	-3.25	107.19	111.04
2	A	1201	DGV	CAR-NAS-CAV	-3.11	103.27	111.23
2	B	1501	DGV	CAZ-CBD-CLBC	2.65	123.05	120.49
2	B	1501	DGV	CAQ-CAR-NAS	-2.62	107.24	113.84
2	A	1201	DGV	CAU-CAT-NAS	2.42	114.88	111.11
2	B	1501	DGV	O-C-CA	-2.41	114.63	120.63
4	B	1502	OLC	O20-C1-C2	2.40	119.43	111.91
2	B	1501	DGV	CAR-CAQ-CAP	-2.33	104.79	113.84
3	A	1202	OLA	O2-C1-C2	2.26	121.30	114.03
3	A	1203	OLA	C3-C2-C1	-2.25	108.80	114.47
3	B	1504	OLA	O2-C1-C2	2.18	121.04	114.03
3	B	1504	OLA	C3-C2-C1	-2.16	109.03	114.47
3	A	1203	OLA	O2-C1-C2	2.10	120.77	114.03
2	A	1201	DGV	CAW-CAX-CAZ	-2.06	110.06	114.60
3	B	1503	OLA	O2-C1-C2	2.05	120.61	114.03
3	A	1203	OLA	O2-C1-O1	-2.03	118.24	123.30
2	B	1501	DGV	CAT-CAU-CAX	2.02	113.43	111.04

There are no chirality outliers.

All (37) torsion outliers are listed below:

Mol	Chain	Res	Type	Atoms
2	A	1201	DGV	CAF-CAG-N-CD
2	A	1201	DGV	CAF-CAG-N-CA
2	B	1501	DGV	NAO-C-CA-CB
2	B	1501	DGV	O-C-CA-CB
2	B	1501	DGV	CAP-CAQ-CAR-NAS
2	A	1201	DGV	O-C-CA-CB
3	B	1503	OLA	C1-C2-C3-C4
3	A	1203	OLA	C1-C2-C3-C4
2	A	1201	DGV	NAO-C-CA-CB
3	A	1203	OLA	C4-C5-C6-C7
3	B	1504	OLA	C1-C2-C3-C4
3	B	1504	OLA	C2-C3-C4-C5
3	A	1203	OLA	C5-C6-C7-C8
4	B	1502	OLC	C1-C2-C3-C4
3	A	1203	OLA	C3-C4-C5-C6
2	B	1501	DGV	CAQ-CAR-NAS-CAT
2	A	1201	DGV	CAQ-CAR-NAS-CAT

Continued on next page...



*Continued from previous page...*

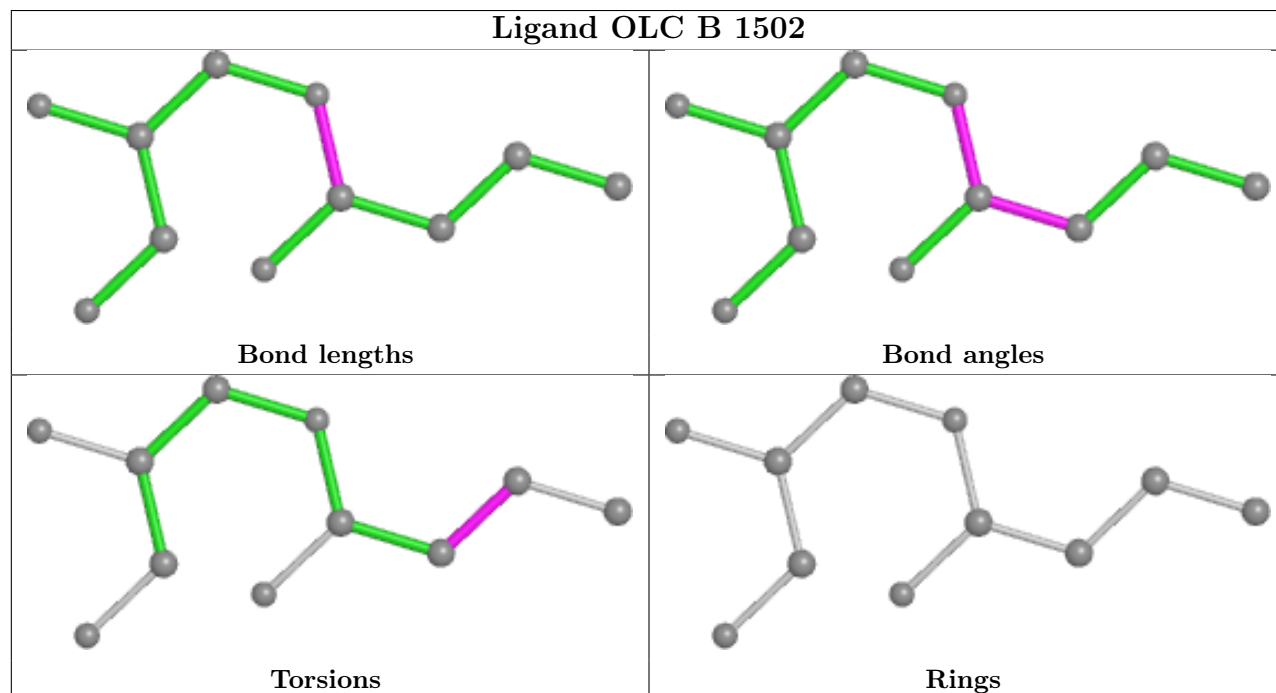
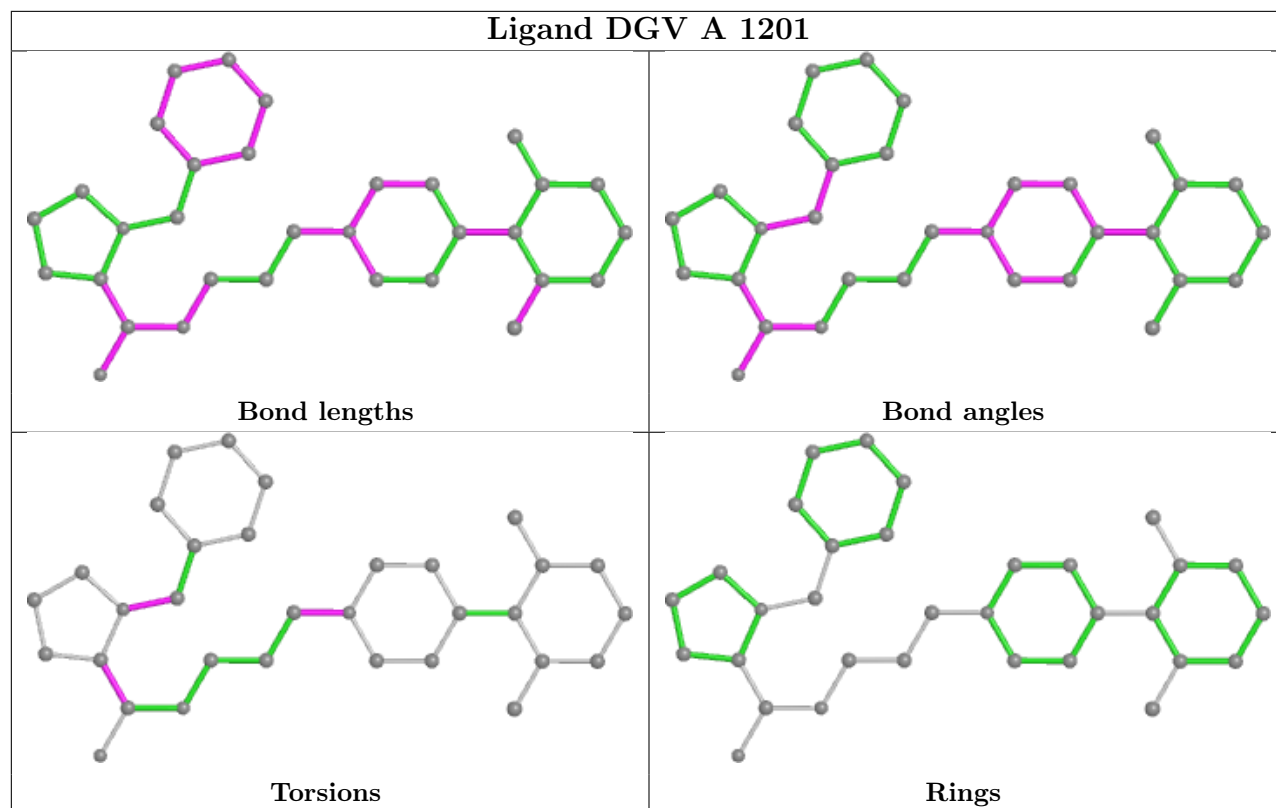
Mol	Chain	Res	Type	Atoms
2	A	1201	DGV	O-C-CA-N
2	A	1201	DGV	NAO-C-CA-N
3	B	1503	OLA	C5-C6-C7-C8
2	B	1501	DGV	O-C-CA-N
2	B	1501	DGV	NAO-C-CA-N
2	B	1501	DGV	CAF-CAG-N-CD
2	B	1501	DGV	CAF-CAG-N-CA
2	A	1201	DGV	CAQ-CAR-NAS-CAV
2	B	1501	DGV	NAO-CAP-CAQ-CAR
3	B	1504	OLA	C4-C5-C6-C7
3	B	1503	OLA	C7-C8-C9-C10
2	B	1501	DGV	CAQ-CAR-NAS-CAV
3	B	1503	OLA	C2-C3-C4-C5
3	A	1203	OLA	O2-C1-C2-C3
3	A	1204	OLA	O1-C1-C2-C3
3	A	1204	OLA	O2-C1-C2-C3
3	A	1203	OLA	C2-C3-C4-C5
3	B	1503	OLA	O1-C1-C2-C3
3	A	1203	OLA	O1-C1-C2-C3
3	B	1503	OLA	O2-C1-C2-C3

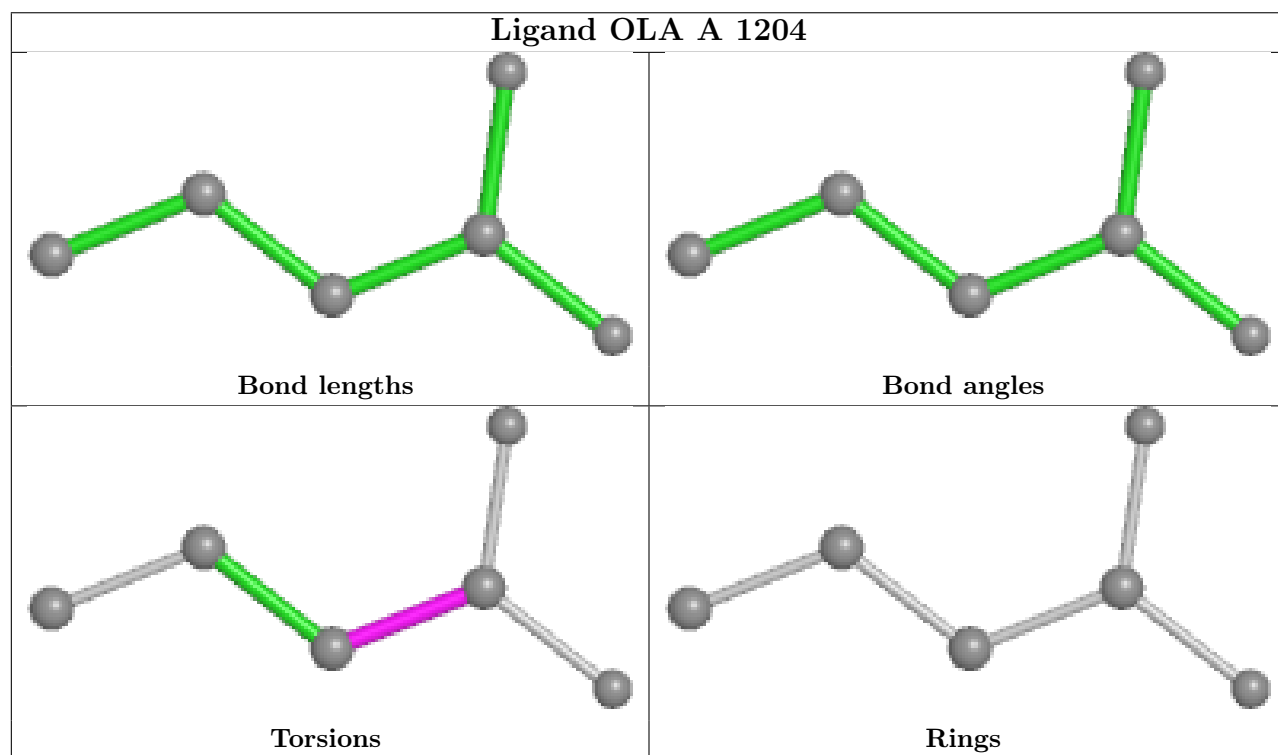
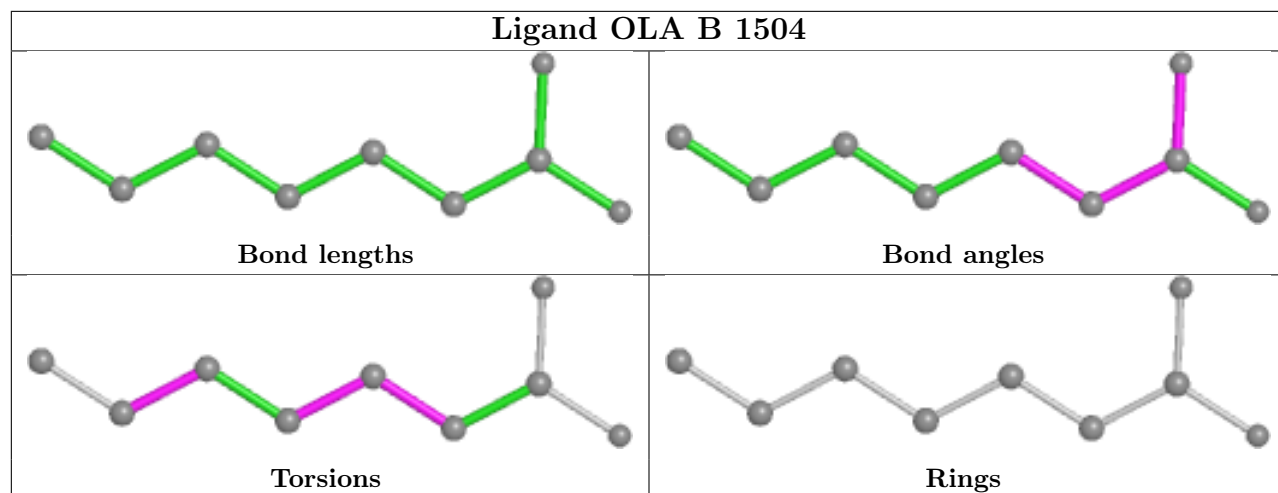
There are no ring outliers.

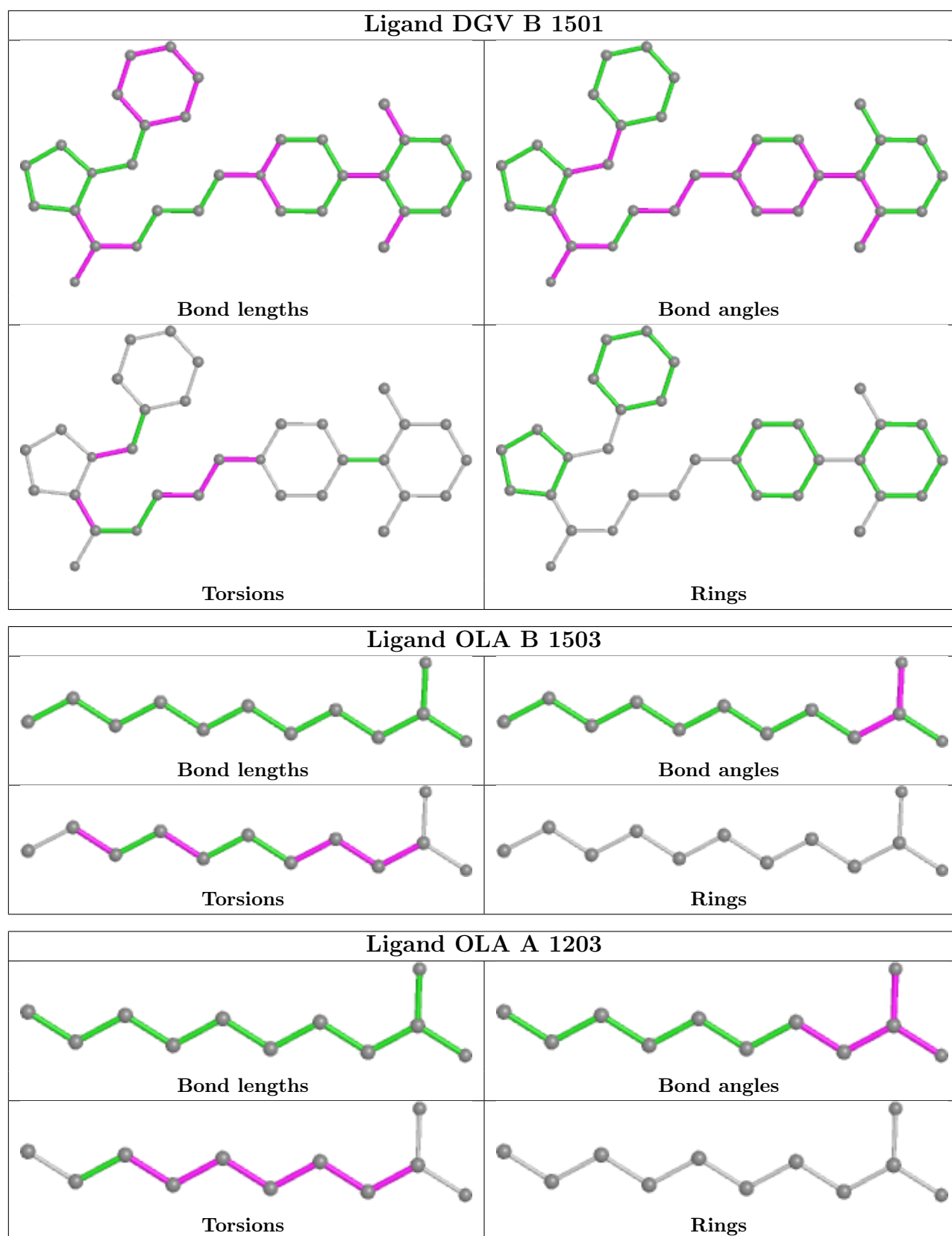
3 monomers are involved in 12 short contacts:

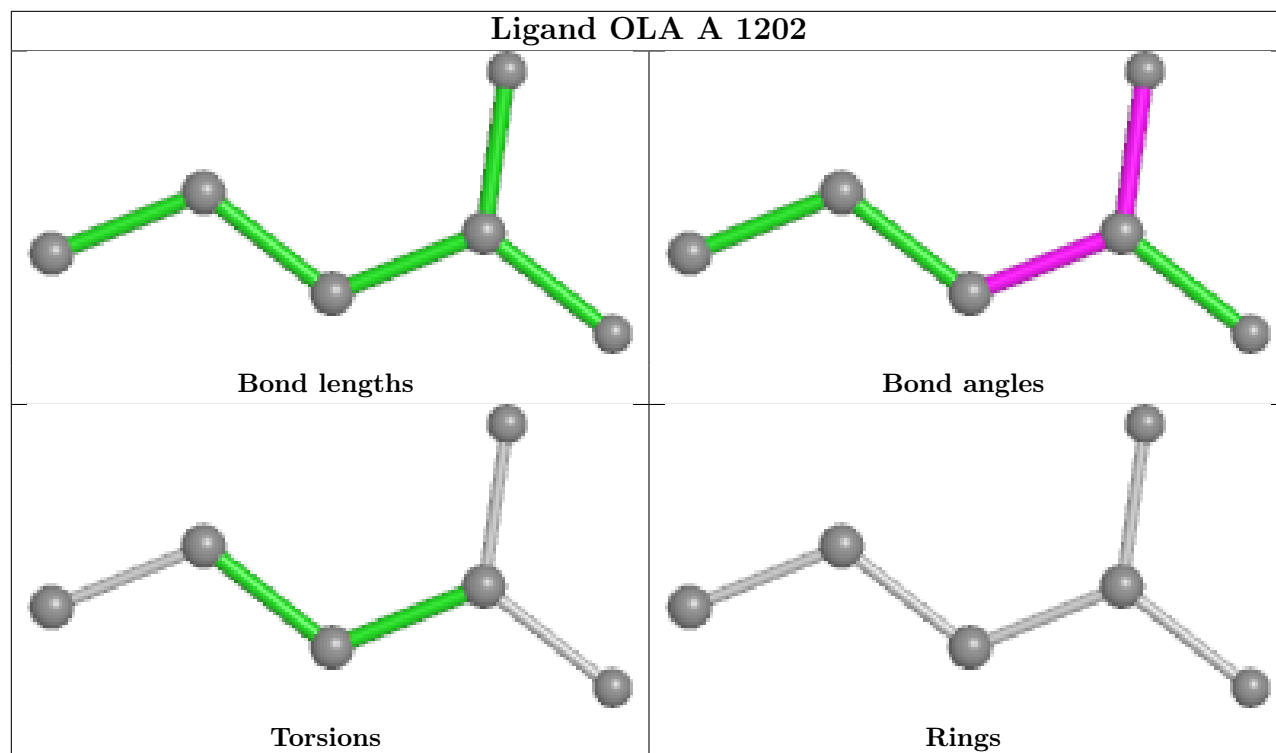
Mol	Chain	Res	Type	Clashes	Symm-Clashes
2	A	1201	DGV	7	0
2	B	1501	DGV	4	0
3	B	1503	OLA	1	0

The following is a two-dimensional graphical depiction of Mogul quality analysis of bond lengths, bond angles, torsion angles, and ring geometry for all instances of the Ligand of Interest. In addition, ligands with molecular weight > 250 and outliers as shown on the validation Tables will also be included. For torsion angles, if less than 5% of the Mogul distribution of torsion angles is within 10 degrees of the torsion angle in question, then that torsion angle is considered an outlier. Any bond that is central to one or more torsion angles identified as an outlier by Mogul will be highlighted in the graph. For rings, the root-mean-square deviation (RMSD) between the ring in question and similar rings identified by Mogul is calculated over all ring torsion angles. If the average RMSD is greater than 60 degrees and the minimal RMSD between the ring in question and any Mogul-identified rings is also greater than 60 degrees, then that ring is considered an outlier. The outliers are highlighted in purple. The color gray indicates Mogul did not find sufficient equivalents in the CSD to analyse the geometry.









## 5.7 Other polymers [i](#)

There are no such residues in this entry.

## 5.8 Polymer linkage issues [i](#)

There are no chain breaks in this entry.

## 6 Fit of model and data [i](#)

### 6.1 Protein, DNA and RNA chains [i](#)

In the following table, the column labelled ‘#RSRZ> 2’ contains the number (and percentage) of RSRZ outliers, followed by percent RSRZ outliers for the chain as percentile scores relative to all X-ray entries and entries of similar resolution. The OWAB column contains the minimum, median, 95<sup>th</sup> percentile and maximum values of the occupancy-weighted average B-factor per residue. The column labelled ‘Q< 0.9’ lists the number of (and percentage) of residues with an average occupancy less than 0.9.

Mol	Chain	Analysed	<RSRZ>	#RSRZ>2	OWAB(Å <sup>2</sup> )	Q<0.9
1	A	281/424 (66%)	-0.45	5 (1%) 68 40	52, 76, 131, 170	0
1	B	379/424 (89%)	-0.41	3 (0%) 86 65	47, 85, 130, 163	0
All	All	660/848 (77%)	-0.43	8 (1%) 79 54	47, 80, 130, 170	0

All (8) RSRZ outliers are listed below:

Mol	Chain	Res	Type	RSRZ
1	A	195	ASP	4.2
1	A	194	GLU	3.4
1	B	1114	LEU	3.2
1	A	196	GLU	2.9
1	A	156	ILE	2.5
1	A	193	VAL	2.4
1	B	1269	PRO	2.3
1	B	1109	PHE	2.2

### 6.2 Non-standard residues in protein, DNA, RNA chains [i](#)

There are no non-standard protein/DNA/RNA residues in this entry.

### 6.3 Carbohydrates [i](#)

There are no monosaccharides in this entry.

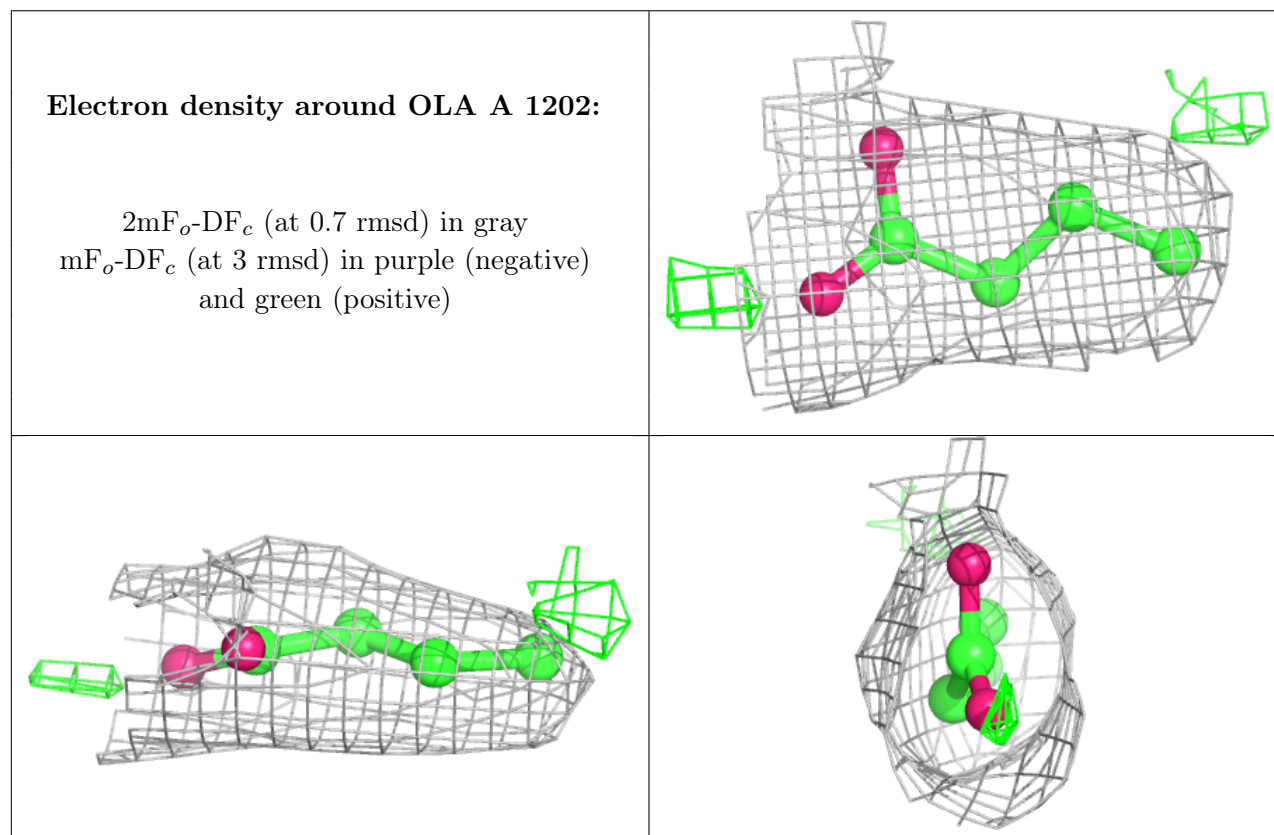
### 6.4 Ligands [i](#)

In the following table, the Atoms column lists the number of modelled atoms in the group and the number defined in the chemical component dictionary. The B-factors column lists the minimum,

median, 95<sup>th</sup> percentile and maximum values of B factors of atoms in the group. The column labelled 'Q< 0.9' lists the number of atoms with occupancy less than 0.9.

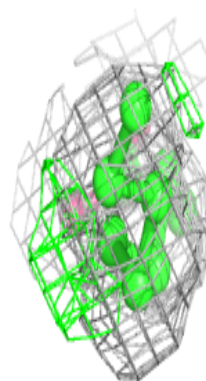
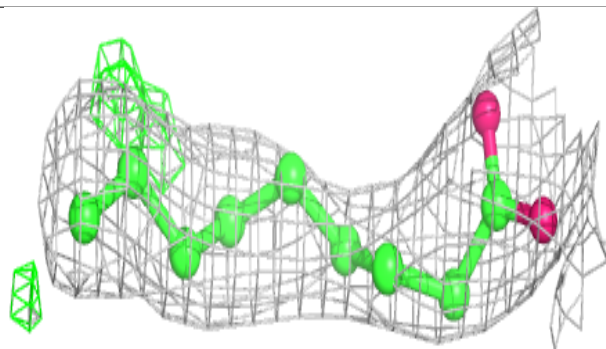
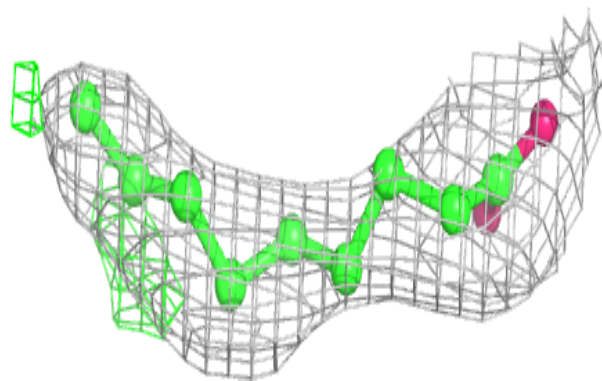
Mol	Type	Chain	Res	Atoms	RSCC	RSR	B-factors( $\text{\AA}^2$ )	Q<0.9
3	OLA	A	1202	6/20	0.75	0.19	68,92,103,109	0
3	OLA	A	1203	11/20	0.79	0.31	69,88,102,107	0
2	DGV	B	1501	32/32	0.86	0.28	74,90,117,170	0
3	OLA	B	1503	12/20	0.88	0.24	65,82,96,104	0
3	OLA	B	1504	9/20	0.89	0.19	67,85,97,98	0
4	OLC	B	1502	11/25	0.91	0.23	59,80,91,91	0
2	DGV	A	1201	32/32	0.92	0.22	66,79,108,153	0
3	OLA	A	1204	6/20	0.93	0.24	68,95,98,99	0

The following is a graphical depiction of the model fit to experimental electron density of all instances of the Ligand of Interest. In addition, ligands with molecular weight > 250 and outliers as shown on the geometry validation Tables will also be included. Each fit is shown from different orientation to approximate a three-dimensional view.

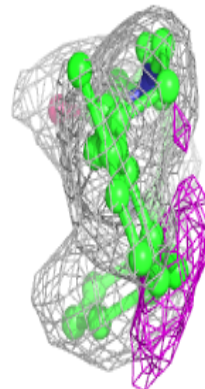
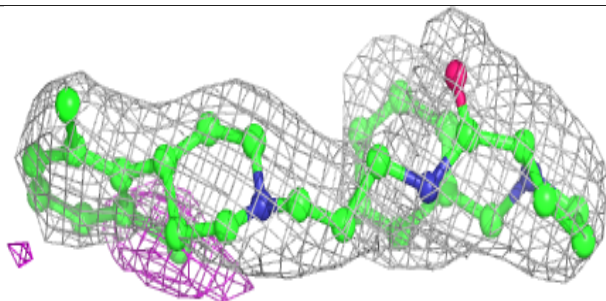
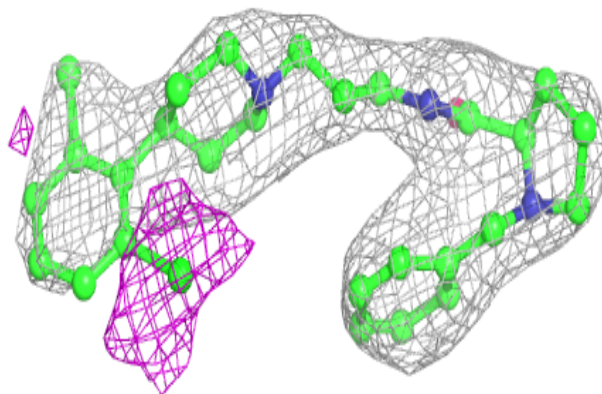


**Electron density around OLA A 1203:**

$2mF_o-DF_c$  (at 0.7 rmsd) in gray  
 $mF_o-DF_c$  (at 3 rmsd) in purple (negative)  
and green (positive)

**Electron density around DGV B 1501:**

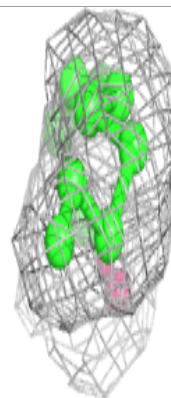
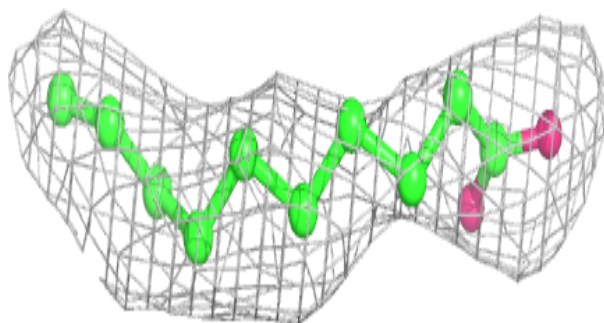
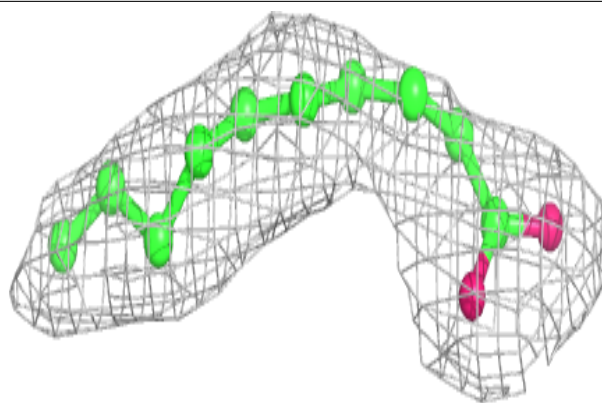
$2mF_o-DF_c$  (at 0.7 rmsd) in gray  
 $mF_o-DF_c$  (at 3 rmsd) in purple (negative)  
and green (positive)



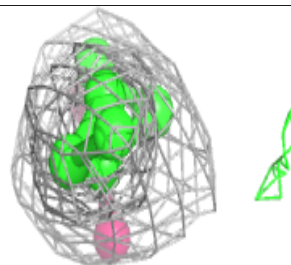
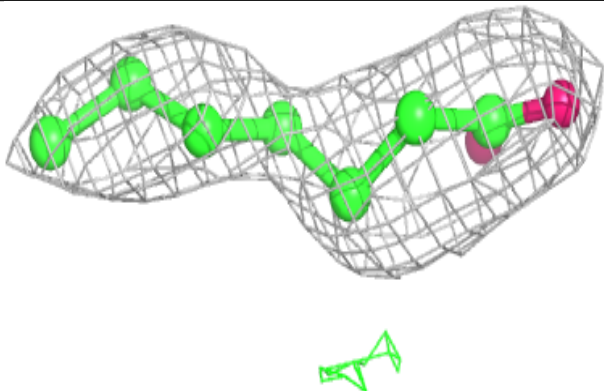
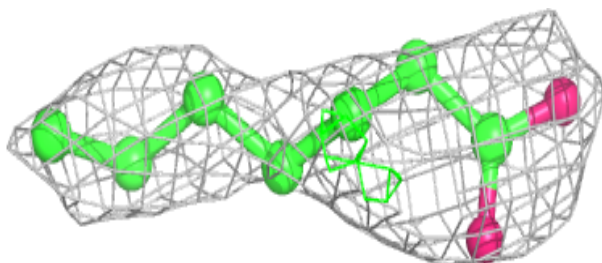


**Electron density around OLA B 1503:**

$2mF_o-DF_c$  (at 0.7 rmsd) in gray  
 $mF_o-DF_c$  (at 3 rmsd) in purple (negative)  
and green (positive)

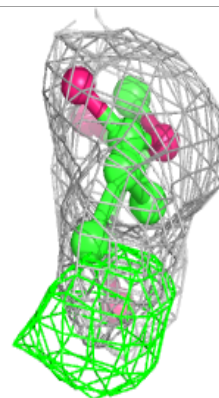
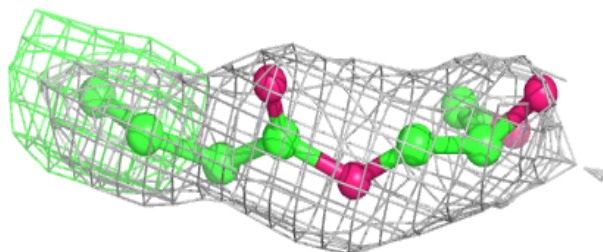
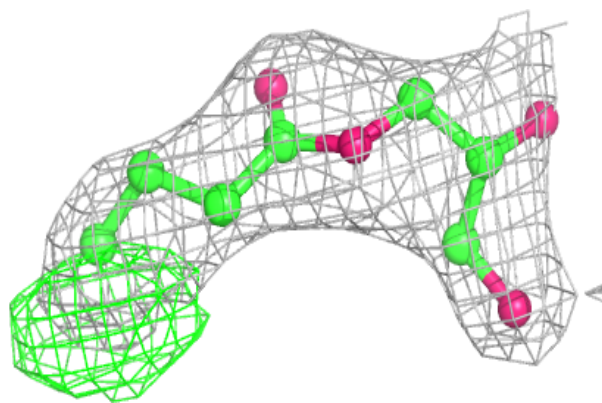
**Electron density around OLA B 1504:**

$2mF_o-DF_c$  (at 0.7 rmsd) in gray  
 $mF_o-DF_c$  (at 3 rmsd) in purple (negative)  
and green (positive)

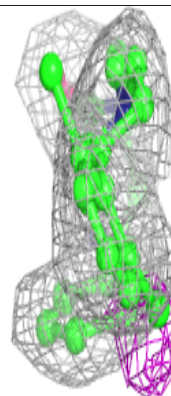
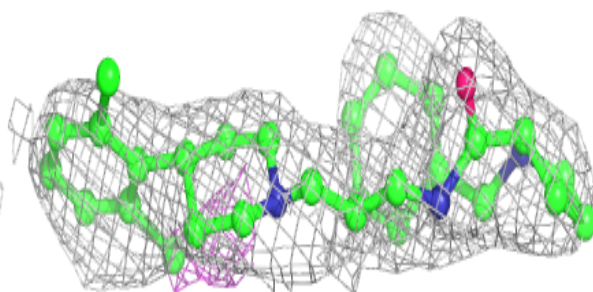
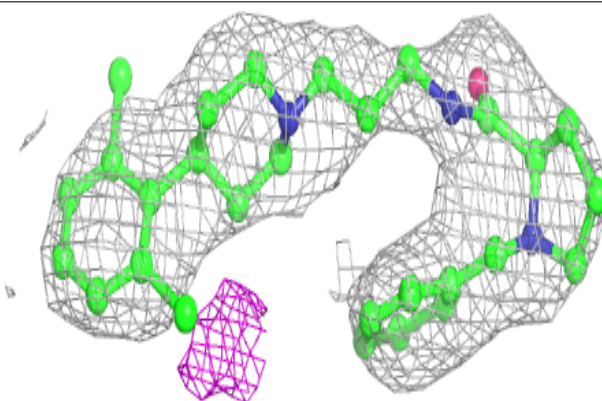


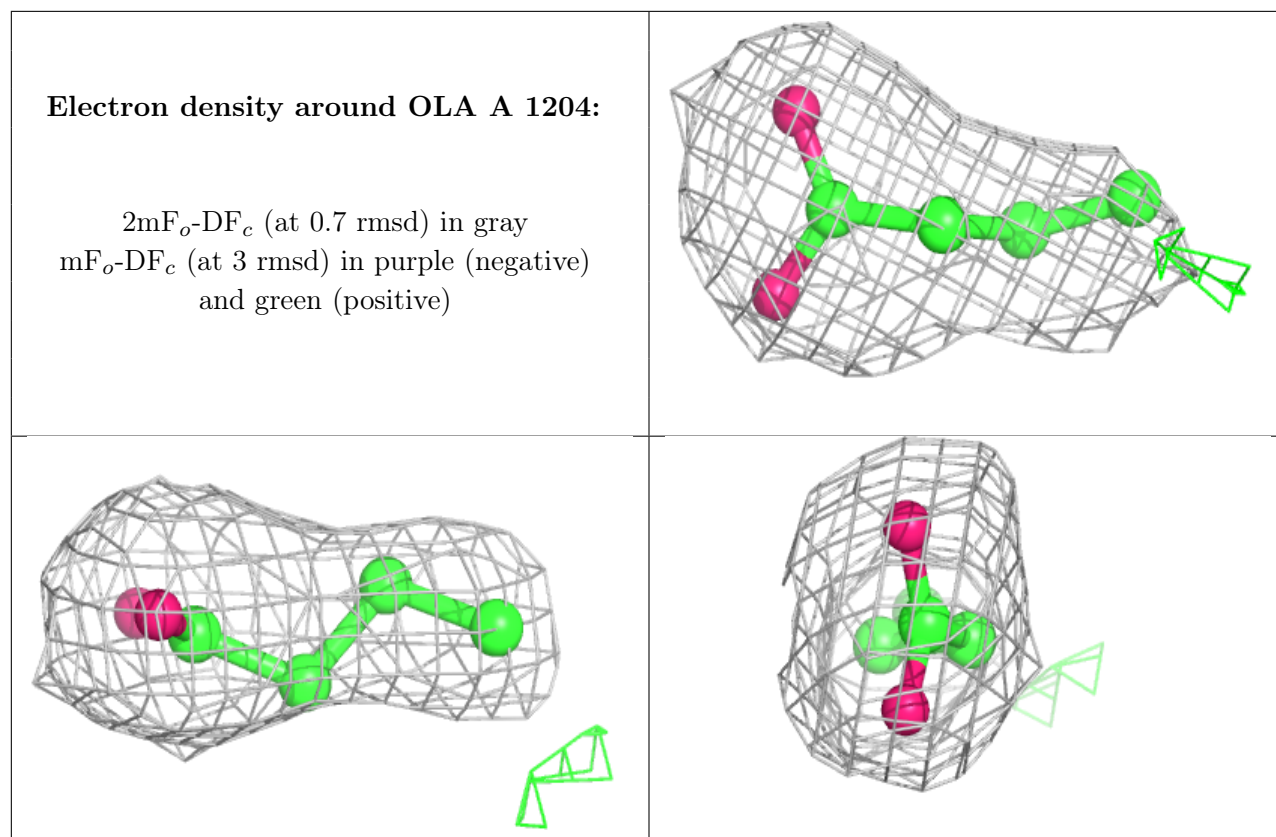
**Electron density around OLC B 1502:**

$2mF_o-DF_c$  (at 0.7 rmsd) in gray  
 $mF_o-DF_c$  (at 3 rmsd) in purple (negative)  
and green (positive)

**Electron density around DGV A 1201:**

$2mF_o-DF_c$  (at 0.7 rmsd) in gray  
 $mF_o-DF_c$  (at 3 rmsd) in purple (negative)  
and green (positive)





## 6.5 Other polymers [i](#)

There are no such residues in this entry.