



Full wwPDB X-ray Structure Validation Report ⓘ

Nov 20, 2023 – 04:53 PM JST

PDB ID : 7CZ3
Title : Crystal structure of Acyl-CoA thioesterase from *Bacillus cereus* ATCC 14579
Authors : Park, J.; Kim, K.-J.
Deposited on : 2020-09-07
Resolution : 2.90 Å(reported)

This is a Full wwPDB X-ray Structure Validation Report for a publicly released PDB entry.

We welcome your comments at validation@mail.wwpdb.org

A user guide is available at

<https://www.wwpdb.org/validation/2017/XrayValidationReportHelp>

with specific help available everywhere you see the ⓘ symbol.

The types of validation reports are described at

<http://www.wwpdb.org/validation/2017/FAQs#types>.

The following versions of software and data (see [references ⓘ](#)) were used in the production of this report:

MolProbity : 4.02b-467
Mogul : 1.8.5 (274361), CSD as541be (2020)
Xtriage (Phenix) : 1.13
EDS : 2.36
buster-report : 1.1.7 (2018)
Percentile statistics : 20191225.v01 (using entries in the PDB archive December 25th 2019)
Refmac : 5.8.0158
CCP4 : 7.0.044 (Gargrove)
Ideal geometry (proteins) : Engh & Huber (2001)
Ideal geometry (DNA, RNA) : Parkinson et al. (1996)
Validation Pipeline (wwPDB-VP) : 2.36

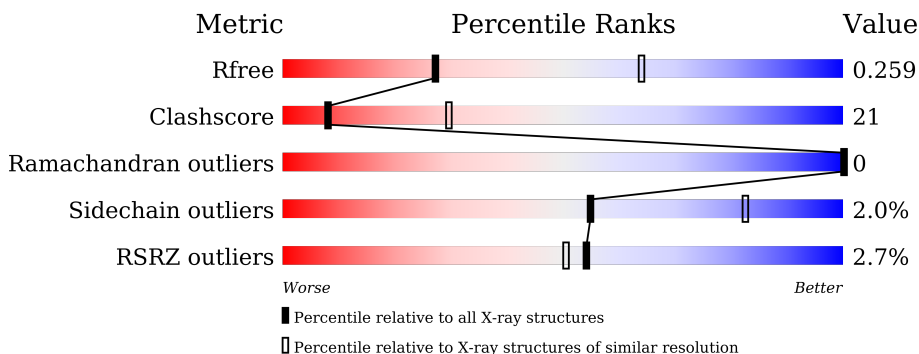
1 Overall quality at a glance

The following experimental techniques were used to determine the structure:

X-RAY DIFFRACTION

The reported resolution of this entry is 2.90 Å.

Percentile scores (ranging between 0-100) for global validation metrics of the entry are shown in the following graphic. The table shows the number of entries on which the scores are based.



Metric	Whole archive (#Entries)	Similar resolution (#Entries, resolution range(Å))
R_{free}	130704	1957 (2.90-2.90)
Clashscore	141614	2172 (2.90-2.90)
Ramachandran outliers	138981	2115 (2.90-2.90)
Sidechain outliers	138945	2117 (2.90-2.90)
RSRZ outliers	127900	1906 (2.90-2.90)

The table below summarises the geometric issues observed across the polymeric chains and their fit to the electron density. The red, orange, yellow and green segments of the lower bar indicate the fraction of residues that contain outliers for ≥ 3 , 2, 1 and 0 types of geometric quality criteria respectively. A grey segment represents the fraction of residues that are not modelled. The numeric value for each fraction is indicated below the corresponding segment, with a dot representing fractions $\leq 5\%$. The upper red bar (where present) indicates the fraction of residues that have poor fit to the electron density. The numeric value is given above the bar.

Mol	Chain	Length	Quality of chain
1	A	178	 5% 67% 27% • 6%
1	B	178	 2% 61% 31% 8%
1	C	178	 3% 61% 32% • 6%
1	D	178	 3% 63% 29% 8%
1	E	178	 % 65% 25% • 9%
1	F	178	 % 64% 25% • 9%

2 Entry composition i

There are 3 unique types of molecules in this entry. The entry contains 8047 atoms, of which 0 are hydrogens and 0 are deuteriums.

In the tables below, the ZeroOcc column contains the number of atoms modelled with zero occupancy, the AltConf column contains the number of residues with at least one atom in alternate conformation and the Trace column contains the number of residues modelled with at most 2 atoms.

- Molecule 1 is a protein called Acyl-CoA hydrolase.

Mol	Chain	Residues	Atoms					ZeroOcc	AltConf	Trace
			Total	C	N	O	S			
1	A	168	1321	837	235	242	7	0	0	0
1	B	163	1278	807	227	237	7	0	0	0
1	C	168	1322	836	235	244	7	0	0	0
1	D	163	1278	807	227	237	7	0	0	0
1	E	162	1270	801	226	236	7	0	0	0
1	F	162	1270	801	226	236	7	0	0	0

There are 48 discrepancies between the modelled and reference sequences:

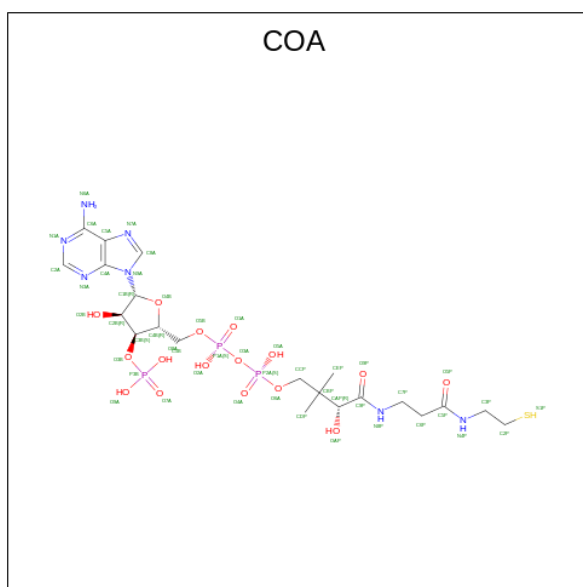
Chain	Residue	Modelled	Actual	Comment	Reference
A	171	LEU	-	expression tag	UNP Q814K4
A	172	GLU	-	expression tag	UNP Q814K4
A	173	HIS	-	expression tag	UNP Q814K4
A	174	HIS	-	expression tag	UNP Q814K4
A	175	HIS	-	expression tag	UNP Q814K4
A	176	HIS	-	expression tag	UNP Q814K4
A	177	HIS	-	expression tag	UNP Q814K4
A	178	HIS	-	expression tag	UNP Q814K4
B	171	LEU	-	expression tag	UNP Q814K4
B	172	GLU	-	expression tag	UNP Q814K4
B	173	HIS	-	expression tag	UNP Q814K4
B	174	HIS	-	expression tag	UNP Q814K4
B	175	HIS	-	expression tag	UNP Q814K4
B	176	HIS	-	expression tag	UNP Q814K4
B	177	HIS	-	expression tag	UNP Q814K4
B	178	HIS	-	expression tag	UNP Q814K4
C	171	LEU	-	expression tag	UNP Q814K4

Continued on next page...

Continued from previous page...

Chain	Residue	Modelled	Actual	Comment	Reference
C	172	GLU	-	expression tag	UNP Q814K4
C	173	HIS	-	expression tag	UNP Q814K4
C	174	HIS	-	expression tag	UNP Q814K4
C	175	HIS	-	expression tag	UNP Q814K4
C	176	HIS	-	expression tag	UNP Q814K4
C	177	HIS	-	expression tag	UNP Q814K4
C	178	HIS	-	expression tag	UNP Q814K4
D	171	LEU	-	expression tag	UNP Q814K4
D	172	GLU	-	expression tag	UNP Q814K4
D	173	HIS	-	expression tag	UNP Q814K4
D	174	HIS	-	expression tag	UNP Q814K4
D	175	HIS	-	expression tag	UNP Q814K4
D	176	HIS	-	expression tag	UNP Q814K4
D	177	HIS	-	expression tag	UNP Q814K4
D	178	HIS	-	expression tag	UNP Q814K4
E	171	LEU	-	expression tag	UNP Q814K4
E	172	GLU	-	expression tag	UNP Q814K4
E	173	HIS	-	expression tag	UNP Q814K4
E	174	HIS	-	expression tag	UNP Q814K4
E	175	HIS	-	expression tag	UNP Q814K4
E	176	HIS	-	expression tag	UNP Q814K4
E	177	HIS	-	expression tag	UNP Q814K4
E	178	HIS	-	expression tag	UNP Q814K4
F	171	LEU	-	expression tag	UNP Q814K4
F	172	GLU	-	expression tag	UNP Q814K4
F	173	HIS	-	expression tag	UNP Q814K4
F	174	HIS	-	expression tag	UNP Q814K4
F	175	HIS	-	expression tag	UNP Q814K4
F	176	HIS	-	expression tag	UNP Q814K4
F	177	HIS	-	expression tag	UNP Q814K4
F	178	HIS	-	expression tag	UNP Q814K4

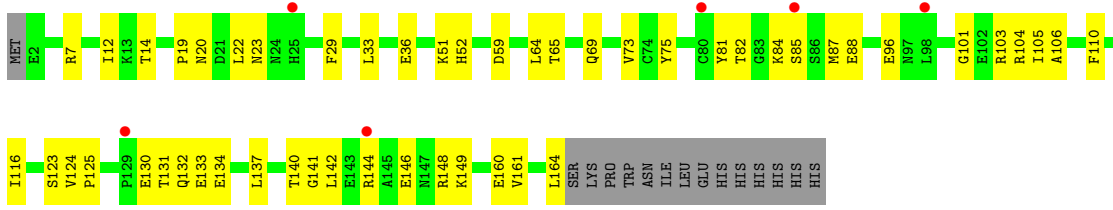
- Molecule 2 is COENZYME A (three-letter code: COA) (formula: C₂₁H₃₆N₇O₁₆P₃S) (labeled as "Ligand of Interest" by depositor).



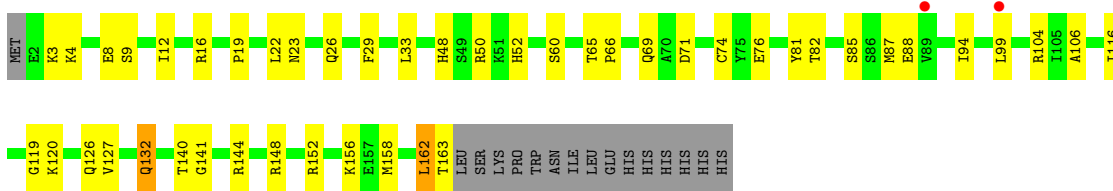
Mol	Chain	Residues	Atoms					ZeroOcc	AltConf	
			Total	C	N	O	P			S
2	A	1	Total 48	21	7	16	3	1	0	0
2	B	1	Total 48	21	7	16	3	1	0	0
2	C	1	Total 48	21	7	16	3	1	0	0
2	D	1	Total 48	21	7	16	3	1	0	0
2	E	1	Total 48	21	7	16	3	1	0	0
2	F	1	Total 48	21	7	16	3	1	0	0

- Molecule 3 is water.

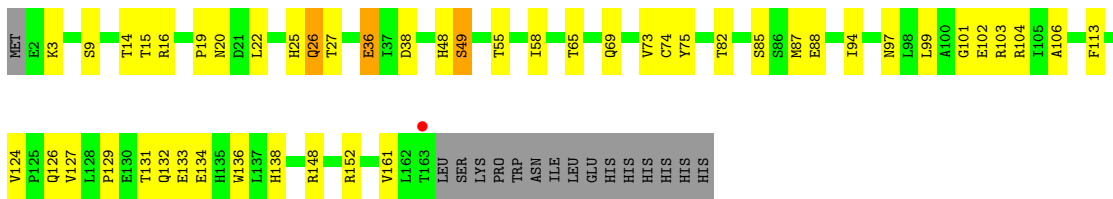
Mol	Chain	Residues	Atoms		ZeroOcc	AltConf
3	A	3	Total 3	O 3	0	0
3	B	2	Total 2	O 2	0	0
3	C	2	Total 2	O 2	0	0
3	D	3	Total 3	O 3	0	0
3	E	7	Total 7	O 7	0	0
3	F	3	Total 3	O 3	0	0



• Molecule 1: Acyl-CoA hydrolase



• Molecule 1: Acyl-CoA hydrolase



4 Data and refinement statistics i

Property	Value	Source
Space group	P 31	Depositor
Cell constants a, b, c, α , β , γ	78.69Å 78.69Å 215.63Å 90.00° 90.00° 120.00°	Depositor
Resolution (Å)	30.81 – 2.90 30.79 – 2.89	Depositor EDS
% Data completeness (in resolution range)	92.3 (30.81-2.90) 92.4 (30.79-2.89)	Depositor EDS
R_{merge}	0.08	Depositor
R_{sym}	(Not available)	Depositor
$\langle I/\sigma(I) \rangle$ ¹	6.02 (at 2.90Å)	Xtrriage
Refinement program	REFMAC 5.8.0258	Depositor
R, R_{free}	0.187 , 0.276 0.190 , 0.259	Depositor DCC
R_{free} test set	1531 reflections (4.96%)	wwPDB-VP
Wilson B-factor (Å ²)	75.4	Xtrriage
Anisotropy	0.003	Xtrriage
Bulk solvent k_{sol} (e/Å ³), B_{sol} (Å ²)	0.33 , 48.9	EDS
L-test for twinning ²	$\langle L \rangle = 0.49$, $\langle L^2 \rangle = 0.32$	Xtrriage
Estimated twinning fraction	0.446 for -h,-k,l 0.066 for h,-h-k,-l 0.059 for -k,-h,-l	Xtrriage
F_o, F_c correlation	0.95	EDS
Total number of atoms	8047	wwPDB-VP
Average B, all atoms (Å ²)	80.0	wwPDB-VP

Xtrriage's analysis on translational NCS is as follows: *The largest off-origin peak in the Patterson function is 3.81% of the height of the origin peak. No significant pseudotranslation is detected.*

¹Intensities estimated from amplitudes.

²Theoretical values of $\langle |L| \rangle$, $\langle L^2 \rangle$ for acentric reflections are 0.5, 0.333 respectively for untwinned datasets, and 0.375, 0.2 for perfectly twinned datasets.

5 Model quality [i](#)

5.1 Standard geometry [i](#)

Bond lengths and bond angles in the following residue types are not validated in this section: COA

The Z score for a bond length (or angle) is the number of standard deviations the observed value is removed from the expected value. A bond length (or angle) with $|Z| > 5$ is considered an outlier worth inspection. RMSZ is the root-mean-square of all Z scores of the bond lengths (or angles).

Mol	Chain	Bond lengths		Bond angles	
		RMSZ	# Z >5	RMSZ	# Z >5
1	A	0.69	0/1346	0.91	0/1814
1	B	0.69	0/1300	0.90	0/1750
1	C	0.71	0/1347	0.98	1/1815 (0.1%)
1	D	0.72	0/1300	0.95	0/1750
1	E	0.69	0/1292	0.94	1/1739 (0.1%)
1	F	0.71	1/1292 (0.1%)	0.92	0/1739
All	All	0.70	1/7877 (0.0%)	0.93	2/10607 (0.0%)

All (1) bond length outliers are listed below:

Mol	Chain	Res	Type	Atoms	Z	Observed(Å)	Ideal(Å)
1	F	36	GLU	CD-OE2	5.14	1.31	1.25

All (2) bond angle outliers are listed below:

Mol	Chain	Res	Type	Atoms	Z	Observed(°)	Ideal(°)
1	C	168	TRP	C-N-CA	5.44	135.29	121.70
1	E	148	ARG	CG-CD-NE	-5.04	101.23	111.80

There are no chirality outliers.

There are no planarity outliers.

5.2 Too-close contacts [i](#)

In the following table, the Non-H and H(model) columns list the number of non-hydrogen atoms and hydrogen atoms in the chain respectively. The H(added) column lists the number of hydrogen atoms added and optimized by MolProbity. The Clashes column lists the number of clashes within the asymmetric unit, whereas Symm-Clashes lists symmetry-related clashes.

Mol	Chain	Non-H	H(model)	H(added)	Clashes	Symm-Clashes
1	A	1321	0	1350	62	0
1	B	1278	0	1304	85	0
1	C	1322	0	1345	80	0
1	D	1278	0	1304	58	1
1	E	1270	0	1293	43	1
1	F	1270	0	1293	46	0
2	A	48	0	32	3	0
2	B	48	0	32	5	0
2	C	48	0	32	5	0
2	D	48	0	32	4	0
2	E	48	0	32	5	0
2	F	48	0	32	6	0
3	A	3	0	0	0	0
3	B	2	0	0	0	0
3	C	2	0	0	0	0
3	D	3	0	0	0	0
3	E	7	0	0	0	0
3	F	3	0	0	0	0
All	All	8047	0	8081	343	1

The all-atom clashscore is defined as the number of clashes found per 1000 atoms (including hydrogen atoms). The all-atom clashscore for this structure is 21.

All (343) close contacts within the same asymmetric unit are listed below, sorted by their clash magnitude.

Atom-1	Atom-2	Interatomic distance (Å)	Clash overlap (Å)
1:B:5:PHE:CD1	1:B:128:LEU:HD11	1.53	1.41
1:B:5:PHE:CE1	1:B:128:LEU:HD11	1.67	1.28
1:E:52:HIS:HB3	1:F:25:HIS:NE2	1.61	1.15
1:C:50:ARG:HD2	1:E:99:LEU:O	1.47	1.15
1:B:5:PHE:CD1	1:B:128:LEU:CD1	2.34	1.10
1:E:22:LEU:HD11	1:E:69:GLN:HG3	1.34	1.06
1:D:82:THR:HG21	1:D:125:PRO:O	1.55	1.05
1:F:38:ASP:OD1	1:F:55:THR:HG21	1.57	1.02
1:B:12:ILE:O	1:D:14:THR:HG22	1.61	1.00
1:B:5:PHE:HD1	1:B:128:LEU:CD1	1.71	0.97
1:A:59:ASP:OD1	1:A:148:ARG:HD2	1.64	0.96
1:A:63:PHE:HB3	2:B:201:COA:H32	1.48	0.95
1:C:25:HIS:CE1	1:D:52:HIS:HB3	2.03	0.94
1:D:87:MET:HE2	1:D:124:VAL:HG11	1.51	0.92
1:C:54:VAL:HG11	2:C:201:COA:H62	1.50	0.91
1:B:5:PHE:HD1	1:B:128:LEU:HD11	1.18	0.90

Continued on next page...

Continued from previous page...

Atom-1	Atom-2	Interatomic distance (Å)	Clash overlap (Å)
1:D:87:MET:CE	1:D:124:VAL:HG11	2.02	0.89
1:B:5:PHE:CE1	1:B:128:LEU:CD1	2.54	0.88
1:D:110:PHE:CE1	1:D:144:ARG:NH2	2.42	0.88
1:A:82:THR:CG2	1:A:127:VAL:HG23	2.04	0.87
1:D:36:GLU:HG2	1:D:75:TYR:CE2	2.09	0.87
1:A:25:HIS:CE1	1:B:52:HIS:CB	2.57	0.86
1:A:25:HIS:CE1	1:B:52:HIS:HB3	2.11	0.84
1:C:50:ARG:HB3	1:C:50:ARG:NH1	1.93	0.83
1:C:88:GLU:OE1	1:C:144:ARG:HD2	1.79	0.83
1:D:51:LYS:NZ	1:D:123:SER:O	2.11	0.83
1:B:142:LEU:O	1:B:142:LEU:HD12	1.78	0.82
1:A:82:THR:HG23	1:A:127:VAL:HG23	1.61	0.82
1:B:128:LEU:O	1:B:128:LEU:HD12	1.82	0.80
1:C:50:ARG:CD	1:E:99:LEU:O	2.31	0.79
1:A:168:TRP:CD1	1:B:132:GLN:HG2	2.19	0.78
1:B:5:PHE:HE1	1:B:128:LEU:HD11	1.48	0.78
1:A:25:HIS:HE1	1:B:52:HIS:HB2	1.48	0.78
1:F:132:GLN:OE1	1:F:132:GLN:N	2.16	0.78
1:C:36:GLU:HG2	1:C:75:TYR:CE1	2.19	0.77
1:C:50:ARG:HB3	1:C:50:ARG:HH11	1.50	0.77
1:C:63:PHE:HB3	2:D:201:COA:H32	1.66	0.77
1:D:87:MET:HE1	1:D:124:VAL:CG1	2.14	0.77
1:B:14:THR:HG22	1:D:12:ILE:O	1.83	0.77
1:C:54:VAL:CG1	2:C:201:COA:H62	2.15	0.76
1:D:131:THR:HB	1:D:134:GLU:HG3	1.68	0.76
1:D:110:PHE:CZ	1:D:144:ARG:NH2	2.54	0.76
1:C:20:ASN:HB2	1:F:20:ASN:HD22	1.51	0.75
1:A:65:THR:HG22	1:A:106:ALA:HA	1.67	0.74
1:D:87:MET:CE	1:D:124:VAL:CG1	2.66	0.74
1:A:144:ARG:HD2	1:A:147:ASN:HB3	1.72	0.72
2:E:201:COA:H8A	2:E:201:COA:H121	1.72	0.72
1:F:49:SER:OG	1:F:87:MET:SD	2.47	0.72
1:D:65:THR:HG22	1:D:106:ALA:HA	1.72	0.72
1:E:132:GLN:CD	1:E:132:GLN:H	1.93	0.71
1:D:87:MET:CE	1:D:124:VAL:HG21	2.20	0.71
1:F:152:ARG:NH2	2:F:201:COA:O1A	2.20	0.71
1:B:6:MET:HE2	1:B:134:GLU:HG2	1.72	0.71
1:A:12:ILE:O	1:F:14:THR:HG22	1.90	0.71
1:B:154:LYS:HD3	1:B:154:LYS:C	2.11	0.71
1:C:7:ARG:HG3	1:C:134:GLU:OE2	1.90	0.71
1:E:116:ILE:HD12	1:E:120:LYS:O	1.91	0.71

Continued on next page...

Continued from previous page...

Atom-1	Atom-2	Interatomic distance (Å)	Clash overlap (Å)
1:C:7:ARG:HG2	1:C:10:LYS:HZ3	1.54	0.71
1:A:25:HIS:CE1	1:B:52:HIS:HB2	2.23	0.70
1:D:88:GLU:OE2	1:D:148:ARG:NH2	2.25	0.70
1:C:49:SER:HB3	1:C:124:VAL:HG13	1.74	0.70
1:C:153:LEU:O	1:C:157:GLU:HG3	1.91	0.70
1:C:132:GLN:CD	1:C:132:GLN:H	1.95	0.70
1:E:26:GLN:O	1:E:26:GLN:HG2	1.92	0.70
1:B:65:THR:HG22	1:B:106:ALA:HA	1.73	0.69
1:D:96:GLU:HB3	1:D:103:ARG:HG2	1.74	0.69
1:B:20:ASN:ND2	1:F:20:ASN:H	1.90	0.69
1:E:116:ILE:CD1	1:E:120:LYS:C	2.62	0.68
1:A:153:LEU:HD13	1:A:153:LEU:O	1.93	0.68
1:C:65:THR:HG22	1:C:106:ALA:HA	1.74	0.68
1:A:48:HIS:CE1	1:A:127:VAL:HG22	2.28	0.68
1:C:48:HIS:CE1	1:C:127:VAL:CG1	2.77	0.68
1:C:85:SER:HA	1:C:124:VAL:HG23	1.76	0.68
1:C:7:ARG:HG2	1:C:10:LYS:NZ	2.08	0.68
1:F:38:ASP:OD1	1:F:55:THR:CG2	2.38	0.68
1:B:6:MET:CE	1:B:134:GLU:HG2	2.25	0.67
1:E:22:LEU:CD1	1:E:69:GLN:HG3	2.19	0.67
1:E:74:CYS:HB3	1:E:94:ILE:HG23	1.76	0.67
1:C:48:HIS:HB3	1:C:87:MET:HE1	1.77	0.66
1:F:97:ASN:O	1:F:101:GLY:N	2.24	0.66
1:B:20:ASN:ND2	1:F:20:ASN:HB2	2.11	0.66
1:E:65:THR:HG22	1:E:106:ALA:HA	1.78	0.65
1:C:140:THR:HG23	1:C:144:ARG:NH2	2.12	0.65
1:C:48:HIS:CE1	1:C:127:VAL:HG12	2.30	0.65
1:A:25:HIS:HE1	1:B:52:HIS:CB	1.99	0.64
1:A:63:PHE:CB	2:B:201:COA:H32	2.26	0.64
1:B:136:TRP:CH2	1:B:140:THR:HG21	2.31	0.64
1:B:6:MET:HE2	1:B:134:GLU:CG	2.28	0.64
1:F:65:THR:HG22	1:F:106:ALA:HA	1.78	0.63
1:A:168:TRP:CH2	1:B:133:GLU:HG3	2.33	0.63
1:F:3:LYS:HE3	1:F:126:GLN:HB3	1.80	0.63
1:B:48:HIS:HE1	1:B:125:PRO:O	1.81	0.63
1:C:48:HIS:HB3	1:C:87:MET:CE	2.29	0.63
1:C:25:HIS:CE1	1:D:52:HIS:CB	2.81	0.62
1:B:48:HIS:HB3	1:B:87:MET:CE	2.29	0.62
1:D:87:MET:HE3	1:D:124:VAL:HG21	1.80	0.62
1:C:22:LEU:HD11	1:C:69:GLN:HB3	1.82	0.61
1:F:102:GLU:HA	1:F:102:GLU:OE2	2.00	0.61

Continued on next page...

Continued from previous page...

Atom-1	Atom-2	Interatomic distance (Å)	Clash overlap (Å)
1:E:116:ILE:HD11	1:E:120:LYS:N	2.16	0.61
1:B:6:MET:CG	1:B:127:VAL:HG22	2.31	0.61
1:B:136:TRP:CZ3	1:B:140:THR:OG1	2.44	0.61
2:A:201:COA:O9P	2:A:201:COA:H131	2.01	0.61
2:F:201:COA:H8A	2:F:201:COA:H121	1.82	0.60
2:E:201:COA:H121	2:E:201:COA:C8A	2.31	0.60
2:F:201:COA:H131	2:F:201:COA:O9P	2.00	0.60
1:B:6:MET:HG2	1:B:127:VAL:CG2	2.32	0.60
1:D:133:GLU:O	1:D:137:LEU:HG	2.01	0.60
1:E:132:GLN:H	1:E:132:GLN:NE2	1.99	0.60
1:F:22:LEU:HD11	1:F:69:GLN:HB3	1.82	0.60
1:D:87:MET:HE1	1:D:124:VAL:HG13	1.82	0.60
1:D:81:TYR:CD2	1:D:141:GLY:HA3	2.37	0.59
1:D:87:MET:CE	1:D:124:VAL:CG2	2.81	0.59
1:E:66:PRO:O	1:E:104:ARG:NH1	2.35	0.59
1:A:10:LYS:O	1:A:47:ARG:NH1	2.35	0.59
1:B:5:PHE:HD1	1:B:128:LEU:HD12	1.62	0.59
1:E:116:ILE:HD12	1:E:120:LYS:C	2.23	0.59
1:A:168:TRP:CD1	1:B:132:GLN:CG	2.86	0.59
1:D:85:SER:HA	1:D:124:VAL:HG23	1.85	0.59
1:A:82:THR:HG21	1:A:127:VAL:HG23	1.82	0.58
1:B:6:MET:HG3	1:B:127:VAL:HG22	1.86	0.58
1:C:6:MET:CE	1:C:80:CYS:O	2.51	0.58
1:C:164:LEU:HD12	1:C:166:LYS:HD2	1.85	0.58
1:A:168:TRP:HB3	1:B:136:TRP:CD1	2.38	0.58
1:C:6:MET:HE2	1:C:80:CYS:O	2.03	0.58
2:A:201:COA:O9P	2:A:201:COA:H141	2.03	0.58
2:C:201:COA:O9P	2:C:201:COA:H131	2.03	0.58
1:A:168:TRP:CZ2	1:B:133:GLU:HG3	2.39	0.57
1:F:88:GLU:OE2	1:F:148:ARG:NH2	2.23	0.57
1:A:59:ASP:OD1	1:A:148:ARG:CD	2.48	0.57
1:C:6:MET:HG2	1:C:79:VAL:O	2.03	0.57
1:C:36:GLU:HG2	1:C:75:TYR:CZ	2.39	0.57
1:A:79:VAL:HG12	1:A:127:VAL:HG21	1.85	0.57
1:C:45:ALA:HA	1:C:87:MET:HE2	1.87	0.57
1:F:26:GLN:O	1:F:26:GLN:HG2	2.04	0.57
1:D:19:PRO:O	1:D:22:LEU:HB2	2.04	0.57
1:B:20:ASN:ND2	1:F:20:ASN:CB	2.68	0.57
1:D:105:ILE:O	1:D:105:ILE:HD12	2.04	0.57
1:B:20:ASN:HD21	1:F:20:ASN:H	1.51	0.56
1:C:20:ASN:CB	1:F:20:ASN:HD22	2.19	0.56

Continued on next page...

Continued from previous page...

Atom-1	Atom-2	Interatomic distance (Å)	Clash overlap (Å)
1:F:103:ARG:NH1	1:F:103:ARG:HG2	2.21	0.56
1:C:140:THR:HG23	1:C:144:ARG:HH22	1.69	0.56
2:B:201:COA:H131	2:B:201:COA:O9P	2.05	0.56
1:D:140:THR:HG22	1:D:140:THR:O	2.05	0.55
1:A:52:HIS:CE1	1:F:99:LEU:CD2	2.90	0.55
1:B:6:MET:HG2	1:B:127:VAL:HG21	1.89	0.55
1:B:88:GLU:OE2	1:B:144:ARG:NE	2.31	0.55
1:B:142:LEU:HD12	1:B:142:LEU:C	2.26	0.55
1:D:23:ASN:HB3	1:D:29:PHE:CE1	2.42	0.55
1:C:168:TRP:CD1	1:C:168:TRP:N	2.74	0.55
1:E:4:LYS:HG2	1:E:8:GLU:OE1	2.07	0.55
1:F:9:SER:HB3	1:F:48:HIS:HB2	1.89	0.55
1:E:163:THR:O	1:E:163:THR:HG22	2.07	0.54
1:A:52:HIS:CE1	1:F:99:LEU:HD21	2.43	0.54
1:A:144:ARG:NH1	1:A:147:ASN:OD1	2.41	0.54
2:F:201:COA:O9A	2:F:201:COA:H4B	2.08	0.54
1:C:36:GLU:HB3	1:C:75:TYR:CE2	2.42	0.54
1:C:72:SER:CB	1:C:98:LEU:HD21	2.38	0.54
1:C:33:LEU:HD11	1:C:93:VAL:HG11	1.88	0.54
1:B:40:ILE:HG21	1:B:75:TYR:HB3	1.89	0.54
1:C:63:PHE:CB	2:D:201:COA:H32	2.37	0.53
1:A:79:VAL:CG1	1:A:127:VAL:HG21	2.38	0.53
2:E:201:COA:H141	2:E:201:COA:N8P	2.23	0.53
1:E:4:LYS:HG2	1:E:8:GLU:CD	2.28	0.53
1:E:82:THR:HG23	1:E:127:VAL:CG2	2.38	0.53
1:F:103:ARG:HG2	1:F:103:ARG:HH11	1.72	0.53
1:A:22:LEU:CD1	1:A:69:GLN:HG2	2.39	0.53
1:C:7:ARG:CG	1:C:134:GLU:OE2	2.55	0.53
2:A:201:COA:N6A	1:B:62:ASP:OD1	2.35	0.53
1:D:131:THR:CB	1:D:134:GLU:HG3	2.38	0.53
1:C:49:SER:CB	1:C:124:VAL:HG13	2.39	0.53
1:C:165:SER:O	1:C:165:SER:OG	2.20	0.53
1:A:22:LEU:HD11	1:A:69:GLN:HG2	1.91	0.52
1:A:21:ASP:OD2	1:A:32:LYS:HE2	2.09	0.52
1:A:81:TYR:CD1	1:A:141:GLY:HA3	2.45	0.52
1:C:136:TRP:CG	1:C:136:TRP:O	2.63	0.52
1:C:168:TRP:CZ2	1:D:133:GLU:HB2	2.44	0.52
1:B:145:ALA:O	1:B:149:LYS:HG2	2.10	0.52
2:C:201:COA:S1P	1:D:33:LEU:HD22	2.50	0.52
1:C:85:SER:O	1:C:124:VAL:HG21	2.09	0.51
1:E:81:TYR:CD2	1:E:141:GLY:HA3	2.45	0.51

Continued on next page...

Continued from previous page...

Atom-1	Atom-2	Interatomic distance (Å)	Clash overlap (Å)
1:D:20:ASN:HA	1:E:19:PRO:HG2	1.92	0.51
1:D:161:VAL:O	1:D:164:LEU:HB3	2.11	0.51
1:D:164:LEU:HD12	1:D:164:LEU:C	2.30	0.51
1:C:136:TRP:O	1:C:136:TRP:CD1	2.63	0.51
1:E:65:THR:HG21	1:E:104:ARG:HG3	1.91	0.51
1:C:97:ASN:HB3	1:C:100:ALA:HB3	1.92	0.51
1:D:36:GLU:HG2	1:D:75:TYR:CZ	2.44	0.51
1:D:146:GLU:OE1	1:D:149:LYS:HE2	2.11	0.51
1:E:82:THR:HG23	1:E:127:VAL:HG23	1.93	0.50
1:F:85:SER:HA	1:F:124:VAL:HG23	1.93	0.50
1:A:26:GLN:HA	1:A:26:GLN:HE21	1.75	0.50
1:B:136:TRP:CE3	1:B:140:THR:OG1	2.59	0.50
1:C:87:MET:CG	1:C:124:VAL:HG11	2.41	0.50
1:C:138:HIS:O	1:C:138:HIS:ND1	2.45	0.50
1:A:93:VAL:HG12	1:A:106:ALA:HB3	1.93	0.50
1:E:48:HIS:C	1:E:48:HIS:CD2	2.85	0.50
2:E:201:COA:N8P	2:E:201:COA:CEP	2.73	0.50
1:F:25:HIS:CD2	1:F:25:HIS:N	2.78	0.50
1:C:48:HIS:CE1	1:C:127:VAL:HG13	2.47	0.50
1:B:50:ARG:HH12	1:D:101:GLY:HA2	1.76	0.49
1:C:129:PRO:HB3	1:C:134:GLU:O	2.13	0.49
1:B:71:ASP:OD2	1:B:104:ARG:NH2	2.40	0.49
2:B:201:COA:O9P	2:B:201:COA:H61	2.11	0.49
1:F:15:THR:HG22	1:F:73:VAL:HB	1.94	0.49
1:B:136:TRP:CZ2	1:B:140:THR:HG21	2.48	0.49
1:F:16:ARG:HB3	1:F:16:ARG:NH1	2.27	0.49
1:A:81:TYR:CE1	1:A:138:HIS:CD2	3.00	0.49
1:A:10:LYS:HE3	1:A:76:GLU:HG2	1.95	0.49
1:A:142:LEU:O	1:A:146:GLU:HG3	2.13	0.48
1:B:65:THR:OG1	1:B:104:ARG:NH1	2.46	0.48
1:C:160:GLU:O	1:C:164:LEU:HB2	2.14	0.48
1:E:152:ARG:O	1:E:156:LYS:HG3	2.13	0.48
1:C:51:LYS:NZ	1:C:123:SER:O	2.41	0.48
1:B:13:LYS:HD3	1:D:14:THR:O	2.14	0.48
1:B:20:ASN:HB2	1:C:20:ASN:OD1	2.13	0.48
1:B:136:TRP:O	1:B:140:THR:OG1	2.32	0.48
1:A:23:ASN:HB3	1:A:29:PHE:CE1	2.49	0.47
1:A:52:HIS:CG	1:B:24:ASN:HB3	2.50	0.47
1:A:168:TRP:HD1	1:B:132:GLN:CG	2.27	0.47
1:C:6:MET:CE	1:C:80:CYS:HA	2.45	0.47
1:B:5:PHE:HE1	1:B:128:LEU:CD1	2.14	0.47

Continued on next page...

Continued from previous page...

Atom-1	Atom-2	Interatomic distance (Å)	Clash overlap (Å)
1:B:13:LYS:HB2	1:B:40:ILE:HD13	1.96	0.47
1:E:71:ASP:OD2	1:E:104:ARG:NH2	2.45	0.47
1:B:136:TRP:CE3	1:B:136:TRP:C	2.88	0.47
1:C:48:HIS:HE1	1:C:127:VAL:HG12	1.76	0.47
1:E:158:MET:O	1:E:162:LEU:HB2	2.15	0.47
1:B:133:GLU:O	1:B:137:LEU:HG	2.15	0.47
2:F:201:COA:H121	2:F:201:COA:C8A	2.43	0.47
1:C:88:GLU:OE1	1:C:144:ARG:CD	2.56	0.47
1:A:20:ASN:OD1	1:D:20:ASN:HB2	2.16	0.46
1:C:168:TRP:H	1:C:168:TRP:HD1	1.62	0.46
1:F:129:PRO:HG3	1:F:138:HIS:CD2	2.50	0.46
1:B:65:THR:HG21	1:B:104:ARG:HG3	1.96	0.46
1:A:33:LEU:HD23	1:A:63:PHE:HE1	1.81	0.46
1:F:36:GLU:HG3	1:F:75:TYR:OH	2.15	0.46
2:D:201:COA:O9P	2:D:201:COA:H62	2.14	0.46
1:A:153:LEU:HD13	1:A:153:LEU:C	2.36	0.46
1:B:45:ALA:HA	1:B:87:MET:HE1	1.98	0.46
1:F:19:PRO:HA	1:F:22:LEU:HG	1.97	0.46
1:C:48:HIS:CD2	1:C:87:MET:CE	2.99	0.46
1:A:102:GLU:O	1:A:102:GLU:HG3	2.16	0.46
1:B:36:GLU:CB	1:B:75:TYR:CZ	2.99	0.46
1:F:65:THR:OG1	1:F:104:ARG:HD2	2.15	0.46
1:A:77:ALA:HA	1:A:90:PHE:O	2.15	0.45
1:B:48:HIS:CE1	1:B:125:PRO:O	2.67	0.45
2:E:201:COA:O5P	2:E:201:COA:H22	2.16	0.45
1:A:153:LEU:C	1:A:153:LEU:CD1	2.85	0.45
1:A:25:HIS:ND1	1:B:52:HIS:HB3	2.30	0.45
1:A:136:TRP:CG	1:A:136:TRP:O	2.69	0.45
1:B:141:GLY:HA2	1:B:144:ARG:NH1	2.31	0.45
1:A:33:LEU:HD11	1:A:93:VAL:HG11	1.97	0.45
1:C:41:ALA:HA	1:C:89:VAL:HG11	1.99	0.45
1:C:72:SER:HB2	1:C:98:LEU:HD21	1.98	0.45
1:C:128:LEU:HD23	1:C:128:LEU:HA	1.86	0.45
1:D:19:PRO:HA	1:D:22:LEU:HG	1.98	0.45
1:E:116:ILE:HD11	1:E:119:GLY:C	2.37	0.45
1:E:3:LYS:HD3	1:E:126:GLN:HB2	1.99	0.45
1:D:64:LEU:HD12	1:D:105:ILE:HD12	1.98	0.45
1:B:136:TRP:CE3	1:B:136:TRP:O	2.70	0.44
1:C:72:SER:HB3	1:C:98:LEU:HD21	1.98	0.44
1:E:9:SER:HB3	1:E:48:HIS:HB2	2.00	0.44
1:B:9:SER:CB	1:B:48:HIS:HB2	2.48	0.44

Continued on next page...

Continued from previous page...

Atom-1	Atom-2	Interatomic distance (Å)	Clash overlap (Å)
1:A:33:LEU:HD23	1:A:63:PHE:CE1	2.53	0.44
1:D:59:ASP:OD1	1:D:59:ASP:N	2.50	0.44
1:D:116:ILE:HD11	2:D:201:COA:H133	1.99	0.44
1:D:7:ARG:HD3	1:D:130:GLU:OE1	2.18	0.44
1:B:51:LYS:HD3	1:B:51:LYS:HA	1.85	0.44
1:C:101:GLY:HA2	1:E:50:ARG:NH1	2.33	0.44
1:F:161:VAL:O	1:F:161:VAL:CG1	2.65	0.44
1:B:50:ARG:NH1	1:D:101:GLY:CA	2.81	0.44
2:B:201:COA:O5P	2:B:201:COA:H22	2.17	0.44
1:C:50:ARG:CB	1:C:50:ARG:CZ	2.96	0.44
1:C:132:GLN:OE1	1:C:132:GLN:N	2.45	0.43
1:B:154:LYS:HD3	1:B:155:SER:N	2.33	0.43
1:A:146:GLU:O	1:A:149:LYS:N	2.50	0.43
1:A:26:GLN:HA	1:A:26:GLN:NE2	2.33	0.43
1:B:6:MET:CG	1:B:127:VAL:CG2	2.93	0.43
1:C:91:VAL:O	1:C:108:THR:HA	2.18	0.43
1:A:81:TYR:CD1	1:A:138:HIS:CD2	3.07	0.43
1:A:6:MET:HG2	1:A:127:VAL:HG11	2.01	0.43
1:B:120:LYS:HB2	1:B:120:LYS:HE3	1.89	0.43
1:A:52:HIS:CE1	1:F:99:LEU:HD22	2.54	0.43
1:D:81:TYR:OH	1:D:142:LEU:HD13	2.18	0.43
1:D:160:GLU:HA	1:D:160:GLU:OE2	2.18	0.43
1:A:77:ALA:CB	1:A:91:VAL:HG22	2.50	0.42
1:D:64:LEU:CD1	1:D:105:ILE:CD1	2.97	0.42
1:B:19:PRO:HA	1:B:22:LEU:HG	2.01	0.42
1:B:20:ASN:ND2	1:F:20:ASN:N	2.65	0.42
1:B:130:GLU:O	1:B:130:GLU:HG3	2.19	0.42
1:C:127:VAL:O	1:C:127:VAL:HG23	2.20	0.42
1:F:132:GLN:N	1:F:132:GLN:CD	2.73	0.42
1:E:12:ILE:CD1	1:E:76:GLU:HG3	2.50	0.42
1:B:6:MET:CE	1:B:134:GLU:CG	2.93	0.42
1:C:138:HIS:ND1	1:C:138:HIS:C	2.72	0.42
1:D:84:LYS:O	1:D:123:SER:HA	2.20	0.42
1:B:9:SER:O	1:B:9:SER:OG	2.33	0.42
1:C:69:GLN:H	1:C:69:GLN:HG2	1.67	0.42
1:E:33:LEU:HD12	2:F:201:COA:S1P	2.59	0.42
1:F:103:ARG:HH11	1:F:103:ARG:CG	2.32	0.42
1:C:77:ALA:HA	1:C:90:PHE:O	2.19	0.42
1:F:74:CYS:HB3	1:F:94:ILE:HG23	2.02	0.42
1:A:26:GLN:NE2	1:A:26:GLN:CA	2.83	0.42
1:C:159:ALA:HB2	1:D:105:ILE:HD11	2.02	0.42

Continued on next page...

Continued from previous page...

Atom-1	Atom-2	Interatomic distance (Å)	Clash overlap (Å)
1:F:36:GLU:CB	1:F:75:TYR:CZ	3.03	0.42
1:C:40:ILE:HG21	1:C:75:TYR:HB3	2.02	0.42
1:E:88:GLU:OE1	1:E:144:ARG:NH1	2.53	0.42
1:F:131:THR:H	1:F:134:GLU:HB2	1.85	0.42
1:E:16:ARG:HH11	1:E:16:ARG:HG3	1.84	0.42
1:C:79:VAL:CG1	1:C:127:VAL:HG11	2.50	0.41
1:D:105:ILE:HD12	1:D:105:ILE:C	2.40	0.41
1:E:23:ASN:HB3	1:E:29:PHE:CE1	2.55	0.41
1:B:23:ASN:HB3	1:B:29:PHE:CE1	2.54	0.41
1:A:99:LEU:HD23	1:A:99:LEU:C	2.40	0.41
1:B:11:ALA:HB1	1:D:14:THR:HG21	2.01	0.41
1:C:118:ASP:C	1:C:120:LYS:H	2.22	0.41
1:C:23:ASN:HB3	1:C:25:HIS:H	1.86	0.41
1:E:99:LEU:N	1:E:99:LEU:CD2	2.83	0.41
1:A:38:ASP:OD2	1:B:31:GLY:N	2.53	0.41
1:C:48:HIS:CD2	1:C:87:MET:HE3	2.55	0.41
1:E:116:ILE:CD1	1:E:120:LYS:N	2.83	0.41
1:F:82:THR:HG23	1:F:127:VAL:CG2	2.49	0.41
1:A:137:LEU:HD21	1:B:158:MET:CE	2.51	0.41
1:E:60:SER:HA	1:F:58:ILE:O	2.21	0.41
1:F:55:THR:HG23	1:F:113:PHE:CE2	2.54	0.41
1:A:41:ALA:HA	1:A:89:VAL:HG11	2.03	0.41
1:B:21:ASP:OD2	1:B:32:LYS:HE2	2.21	0.41
1:B:48:HIS:CE1	1:B:125:PRO:HG2	2.56	0.41
1:C:50:ARG:NH1	1:C:50:ARG:CB	2.73	0.41
1:D:20:ASN:HA	1:E:19:PRO:CG	2.51	0.41
1:D:64:LEU:HD12	1:D:105:ILE:CD1	2.51	0.41
1:D:65:THR:HG21	1:D:104:ARG:HG3	2.03	0.41
1:E:48:HIS:CD2	1:E:87:MET:CE	3.04	0.41
1:F:133:GLU:O	1:F:136:TRP:HB3	2.20	0.41
1:C:17:VAL:HG12	1:C:69:GLN:HA	2.03	0.41
1:C:54:VAL:CG1	2:C:201:COA:C6P	2.93	0.41
1:D:73:VAL:HG23	1:D:75:TYR:CE2	2.57	0.41
1:A:168:TRP:CZ2	1:B:133:GLU:HB2	2.57	0.40
1:B:73:VAL:HG12	1:B:75:TYR:CE1	2.56	0.40
1:D:36:GLU:CG	1:D:75:TYR:CE2	2.94	0.40
1:D:69:GLN:H	1:D:69:GLN:HG2	1.74	0.40
1:E:88:GLU:OE2	1:E:144:ARG:NH1	2.53	0.40
1:B:20:ASN:HD22	1:F:19:PRO:HG2	1.87	0.40
1:E:162:LEU:CD1	1:E:162:LEU:O	2.70	0.40

All (1) symmetry-related close contacts are listed below. The label for Atom-2 includes the sym-

metry operator and encoded unit-cell translations to be applied.

Atom-1	Atom-2	Interatomic distance (Å)	Clash overlap (Å)
1:D:132:GLN:OE1	1:E:132:GLN:CG[2_545]	2.12	0.08

5.3 Torsion angles [i](#)

5.3.1 Protein backbone [i](#)

In the following table, the Percentiles column shows the percent Ramachandran outliers of the chain as a percentile score with respect to all X-ray entries followed by that with respect to entries of similar resolution.

The Analysed column shows the number of residues for which the backbone conformation was analysed, and the total number of residues.

Mol	Chain	Analysed	Favoured	Allowed	Outliers	Percentiles	
1	A	166/178 (93%)	152 (92%)	14 (8%)	0	100	100
1	B	161/178 (90%)	157 (98%)	4 (2%)	0	100	100
1	C	166/178 (93%)	153 (92%)	13 (8%)	0	100	100
1	D	161/178 (90%)	151 (94%)	10 (6%)	0	100	100
1	E	160/178 (90%)	149 (93%)	11 (7%)	0	100	100
1	F	160/178 (90%)	149 (93%)	11 (7%)	0	100	100
All	All	974/1068 (91%)	911 (94%)	63 (6%)	0	100	100

There are no Ramachandran outliers to report.

5.3.2 Protein sidechains [i](#)

In the following table, the Percentiles column shows the percent sidechain outliers of the chain as a percentile score with respect to all X-ray entries followed by that with respect to entries of similar resolution.

The Analysed column shows the number of residues for which the sidechain conformation was analysed, and the total number of residues.

Mol	Chain	Analysed	Rotameric	Outliers	Percentiles	
1	A	145/155 (94%)	141 (97%)	4 (3%)	43	76
1	B	140/155 (90%)	136 (97%)	4 (3%)	42	76
1	C	145/155 (94%)	143 (99%)	2 (1%)	67	89

Continued on next page...

Continued from previous page...

Mol	Chain	Analysed	Rotameric	Outliers	Percentiles	
1	D	140/155 (90%)	140 (100%)	0	100	100
1	E	139/155 (90%)	135 (97%)	4 (3%)	42	76
1	F	139/155 (90%)	136 (98%)	3 (2%)	52	81
All	All	848/930 (91%)	831 (98%)	17 (2%)	55	82

All (17) residues with a non-rotameric sidechain are listed below:

Mol	Chain	Res	Type
1	A	42	SER
1	A	153	LEU
1	A	155	SER
1	A	163	THR
1	B	105	ILE
1	B	123	SER
1	B	157	GLU
1	B	164	LEU
1	C	17	VAL
1	C	72	SER
1	E	85	SER
1	E	132	GLN
1	E	140	THR
1	E	162	LEU
1	F	26	GLN
1	F	27	THR
1	F	49	SER

Sometimes sidechains can be flipped to improve hydrogen bonding and reduce clashes. All (13) such sidechains are listed below:

Mol	Chain	Res	Type
1	A	25	HIS
1	A	26	GLN
1	A	52	HIS
1	B	20	ASN
1	B	48	HIS
1	B	147	ASN
1	C	25	HIS
1	C	26	GLN
1	C	48	HIS
1	E	48	HIS
1	E	132	GLN

Continued on next page...

Continued from previous page...

Mol	Chain	Res	Type
1	F	20	ASN
1	F	48	HIS

5.3.3 RNA [i](#)

There are no RNA molecules in this entry.

5.4 Non-standard residues in protein, DNA, RNA chains [i](#)

There are no non-standard protein/DNA/RNA residues in this entry.

5.5 Carbohydrates [i](#)

There are no monosaccharides in this entry.

5.6 Ligand geometry [i](#)

6 ligands are modelled in this entry.

In the following table, the Counts columns list the number of bonds (or angles) for which Mogul statistics could be retrieved, the number of bonds (or angles) that are observed in the model and the number of bonds (or angles) that are defined in the Chemical Component Dictionary. The Link column lists molecule types, if any, to which the group is linked. The Z score for a bond length (or angle) is the number of standard deviations the observed value is removed from the expected value. A bond length (or angle) with $|Z| > 2$ is considered an outlier worth inspection. RMSZ is the root-mean-square of all Z scores of the bond lengths (or angles).

Mol	Type	Chain	Res	Link	Bond lengths			Bond angles		
					Counts	RMSZ	$\# Z > 2$	Counts	RMSZ	$\# Z > 2$
2	COA	F	201	-	41,50,50	0.76	0	52,75,75	0.83	2 (3%)
2	COA	A	201	-	41,50,50	0.71	0	52,75,75	0.98	4 (7%)
2	COA	B	201	-	41,50,50	0.71	0	52,75,75	0.89	2 (3%)
2	COA	D	201	-	41,50,50	0.73	0	52,75,75	0.72	1 (1%)
2	COA	C	201	-	41,50,50	0.72	0	52,75,75	0.79	2 (3%)
2	COA	E	201	-	41,50,50	0.74	0	52,75,75	0.72	1 (1%)

In the following table, the Chirals column lists the number of chiral outliers, the number of chiral centers analysed, the number of these observed in the model and the number defined in the Chemical Component Dictionary. Similar counts are reported in the Torsion and Rings columns.

'-' means no outliers of that kind were identified.

Mol	Type	Chain	Res	Link	Chirals	Torsions	Rings
2	COA	F	201	-	-	17/44/64/64	0/3/3/3
2	COA	A	201	-	-	15/44/64/64	0/3/3/3
2	COA	B	201	-	-	12/44/64/64	0/3/3/3
2	COA	D	201	-	-	21/44/64/64	0/3/3/3
2	COA	C	201	-	-	17/44/64/64	0/3/3/3
2	COA	E	201	-	-	11/44/64/64	0/3/3/3

There are no bond length outliers.

All (12) bond angle outliers are listed below:

Mol	Chain	Res	Type	Atoms	Z	Observed(°)	Ideal(°)
2	A	201	COA	OAP-CAP-CBP	-3.47	102.08	110.25
2	B	201	COA	OAP-CAP-CBP	-3.08	103.00	110.25
2	A	201	COA	O4B-C1B-C2B	-2.60	103.13	106.93
2	A	201	COA	C5A-C6A-N6A	2.42	124.03	120.35
2	F	201	COA	P2A-O3A-P1A	-2.32	124.88	132.83
2	C	201	COA	C5A-C6A-N6A	2.27	123.81	120.35
2	D	201	COA	C5A-C6A-N6A	2.21	123.72	120.35
2	B	201	COA	O4B-C1B-C2B	-2.16	103.78	106.93
2	C	201	COA	O4B-C1B-C2B	-2.15	103.78	106.93
2	E	201	COA	C5A-C6A-N6A	2.15	123.62	120.35
2	F	201	COA	C5A-C6A-N6A	2.08	123.52	120.35
2	A	201	COA	O6A-CCP-CBP	-2.05	107.25	110.55

There are no chirality outliers.

All (93) torsion outliers are listed below:

Mol	Chain	Res	Type	Atoms
2	A	201	COA	O4B-C4B-C5B-O5B
2	A	201	COA	N8P-C9P-CAP-OAP
2	A	201	COA	CAP-C9P-N8P-C7P
2	A	201	COA	C2P-C3P-N4P-C5P
2	B	201	COA	C5B-O5B-P1A-O1A
2	B	201	COA	C5B-O5B-P1A-O2A
2	B	201	COA	C6P-C5P-N4P-C3P
2	B	201	COA	C2P-C3P-N4P-C5P
2	C	201	COA	C5B-O5B-P1A-O3A
2	C	201	COA	CAP-C9P-N8P-C7P
2	C	201	COA	C2P-C3P-N4P-C5P

Continued on next page...

Continued from previous page...

Mol	Chain	Res	Type	Atoms
2	C	201	COA	S1P-C2P-C3P-N4P
2	D	201	COA	CAP-CBP-CCP-O6A
2	D	201	COA	C9P-CAP-CBP-CCP
2	D	201	COA	C9P-CAP-CBP-CDP
2	D	201	COA	CAP-C9P-N8P-C7P
2	D	201	COA	C6P-C5P-N4P-C3P
2	D	201	COA	C2P-C3P-N4P-C5P
2	E	201	COA	C5B-O5B-P1A-O3A
2	E	201	COA	CAP-CBP-CCP-O6A
2	E	201	COA	C2P-C3P-N4P-C5P
2	F	201	COA	O4B-C4B-C5B-O5B
2	F	201	COA	C5B-O5B-P1A-O2A
2	F	201	COA	P1A-O3A-P2A-O6A
2	F	201	COA	CCP-O6A-P2A-O4A
2	F	201	COA	CCP-O6A-P2A-O5A
2	F	201	COA	CAP-CBP-CCP-O6A
2	F	201	COA	C2P-C3P-N4P-C5P
2	B	201	COA	C6P-C7P-N8P-C9P
2	B	201	COA	O5P-C5P-N4P-C3P
2	D	201	COA	O5P-C5P-N4P-C3P
2	C	201	COA	O9P-C9P-N8P-C7P
2	D	201	COA	C6P-C7P-N8P-C9P
2	C	201	COA	C6P-C7P-N8P-C9P
2	A	201	COA	C6P-C7P-N8P-C9P
2	A	201	COA	C3B-C4B-C5B-O5B
2	F	201	COA	C3B-C4B-C5B-O5B
2	D	201	COA	O5P-C5P-C6P-C7P
2	D	201	COA	O9P-C9P-N8P-C7P
2	D	201	COA	N4P-C5P-C6P-C7P
2	D	201	COA	CEP-CBP-CCP-O6A
2	F	201	COA	CDP-CBP-CCP-O6A
2	F	201	COA	CEP-CBP-CCP-O6A
2	E	201	COA	C6P-C7P-N8P-C9P
2	A	201	COA	O9P-C9P-CAP-OAP
2	C	201	COA	CDP-CBP-CCP-O6A
2	C	201	COA	CEP-CBP-CCP-O6A
2	D	201	COA	CDP-CBP-CCP-O6A
2	E	201	COA	CDP-CBP-CCP-O6A
2	E	201	COA	CEP-CBP-CCP-O6A
2	D	201	COA	OAP-CAP-CBP-CDP
2	C	201	COA	O4B-C4B-C5B-O5B
2	A	201	COA	O9P-C9P-N8P-C7P

Continued on next page...

Continued from previous page...

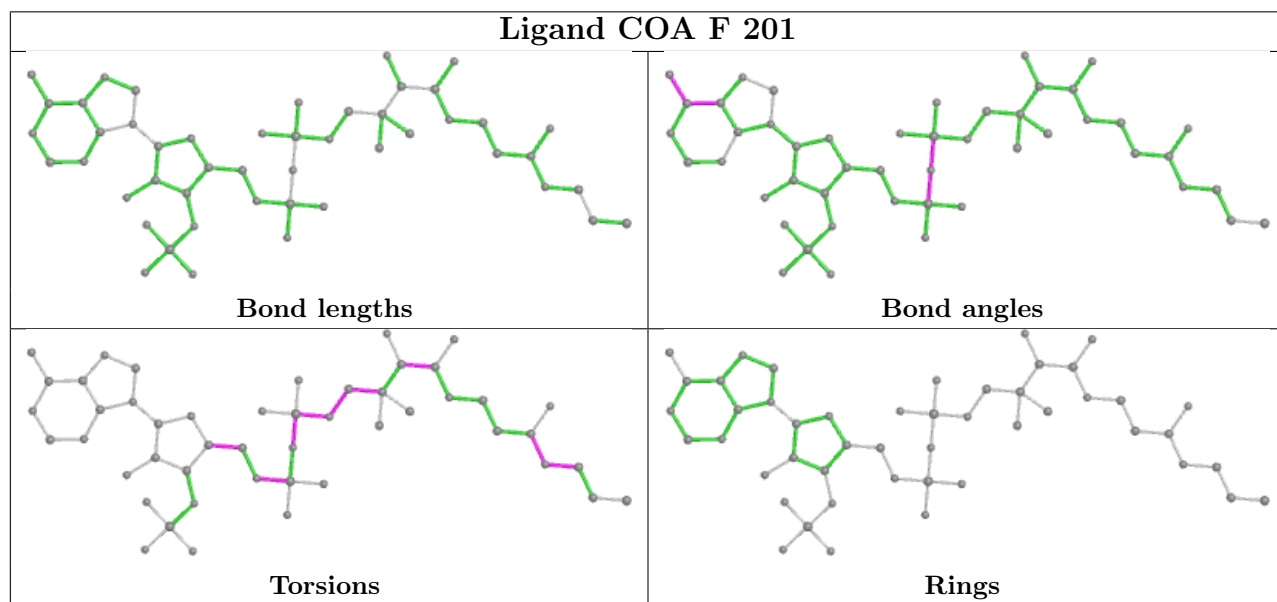
Mol	Chain	Res	Type	Atoms
2	A	201	COA	P2A-O3A-P1A-O5B
2	B	201	COA	CCP-O6A-P2A-O3A
2	F	201	COA	C5B-O5B-P1A-O3A
2	D	201	COA	P1A-O3A-P2A-O4A
2	D	201	COA	P1A-O3A-P2A-O5A
2	A	201	COA	C5B-O5B-P1A-O2A
2	C	201	COA	C5B-O5B-P1A-O1A
2	E	201	COA	C5B-O5B-P1A-O1A
2	F	201	COA	C5B-O5B-P1A-O1A
2	C	201	COA	CAP-CBP-CCP-O6A
2	D	201	COA	OAP-CAP-CBP-CCP
2	A	201	COA	CDP-CBP-CCP-O6A
2	B	201	COA	P2A-O3A-P1A-O2A
2	C	201	COA	P2A-O3A-P1A-O1A
2	D	201	COA	P2A-O3A-P1A-O1A
2	C	201	COA	C5P-C6P-C7P-N8P
2	A	201	COA	O9P-C9P-CAP-CBP
2	F	201	COA	O9P-C9P-CAP-CBP
2	C	201	COA	O5P-C5P-C6P-C7P
2	A	201	COA	CEP-CBP-CCP-O6A
2	F	201	COA	O5P-C5P-N4P-C3P
2	A	201	COA	N8P-C9P-CAP-CBP
2	F	201	COA	N8P-C9P-CAP-CBP
2	C	201	COA	N4P-C5P-C6P-C7P
2	C	201	COA	C3B-C4B-C5B-O5B
2	E	201	COA	O4B-C4B-C5B-O5B
2	B	201	COA	C3B-O3B-P3B-O7A
2	D	201	COA	C3B-O3B-P3B-O7A
2	E	201	COA	C3B-O3B-P3B-O7A
2	D	201	COA	C9P-CAP-CBP-CEP
2	A	201	COA	C5B-O5B-P1A-O3A
2	B	201	COA	C5B-O5B-P1A-O3A
2	D	201	COA	OAP-CAP-CBP-CEP
2	E	201	COA	C3B-O3B-P3B-O8A
2	E	201	COA	C3B-O3B-P3B-O9A
2	F	201	COA	CCP-O6A-P2A-O3A
2	B	201	COA	P2A-O3A-P1A-O1A
2	C	201	COA	P2A-O3A-P1A-O2A
2	F	201	COA	CBP-CCP-O6A-P2A
2	B	201	COA	O4B-C4B-C5B-O5B

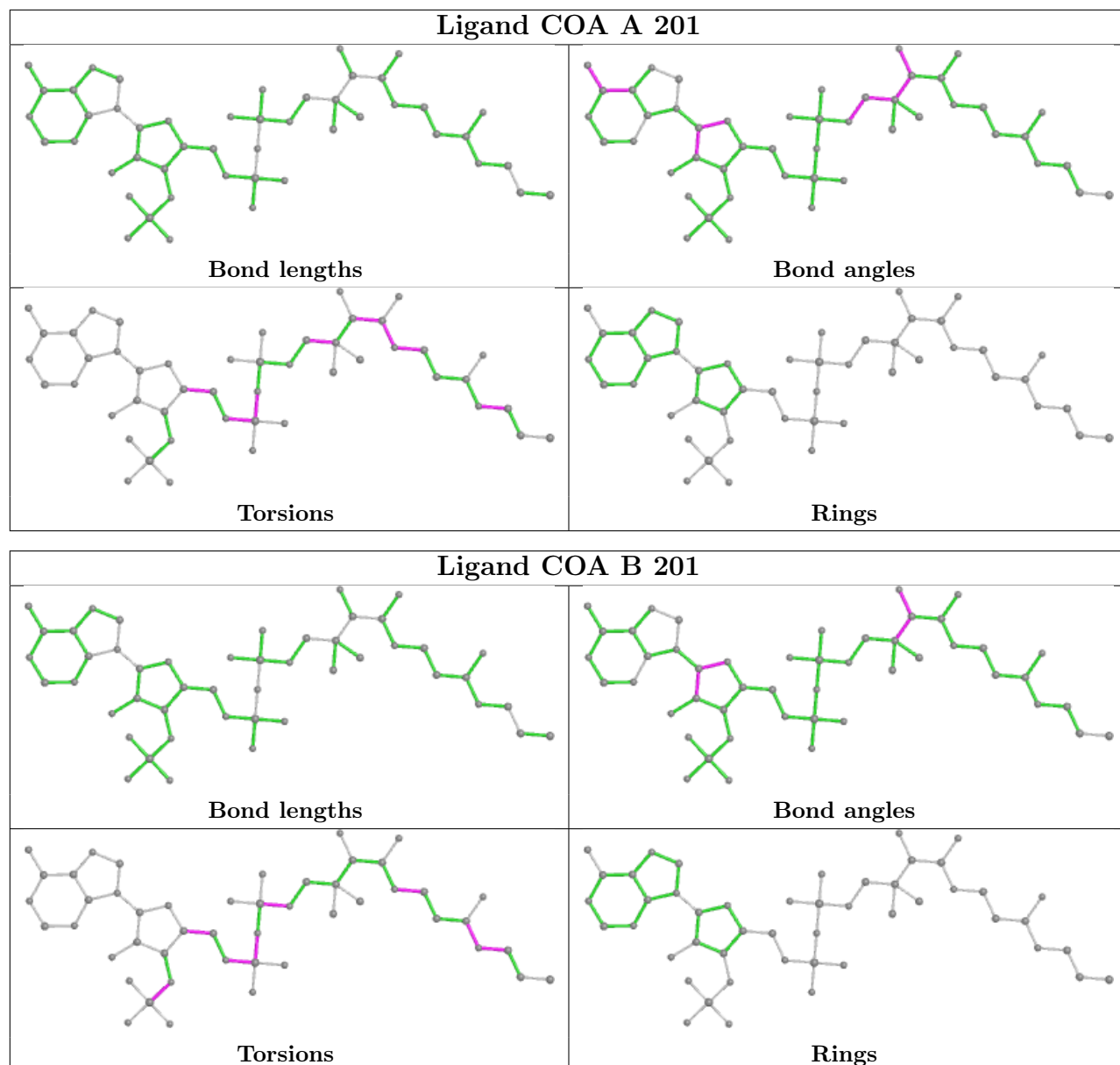
There are no ring outliers.

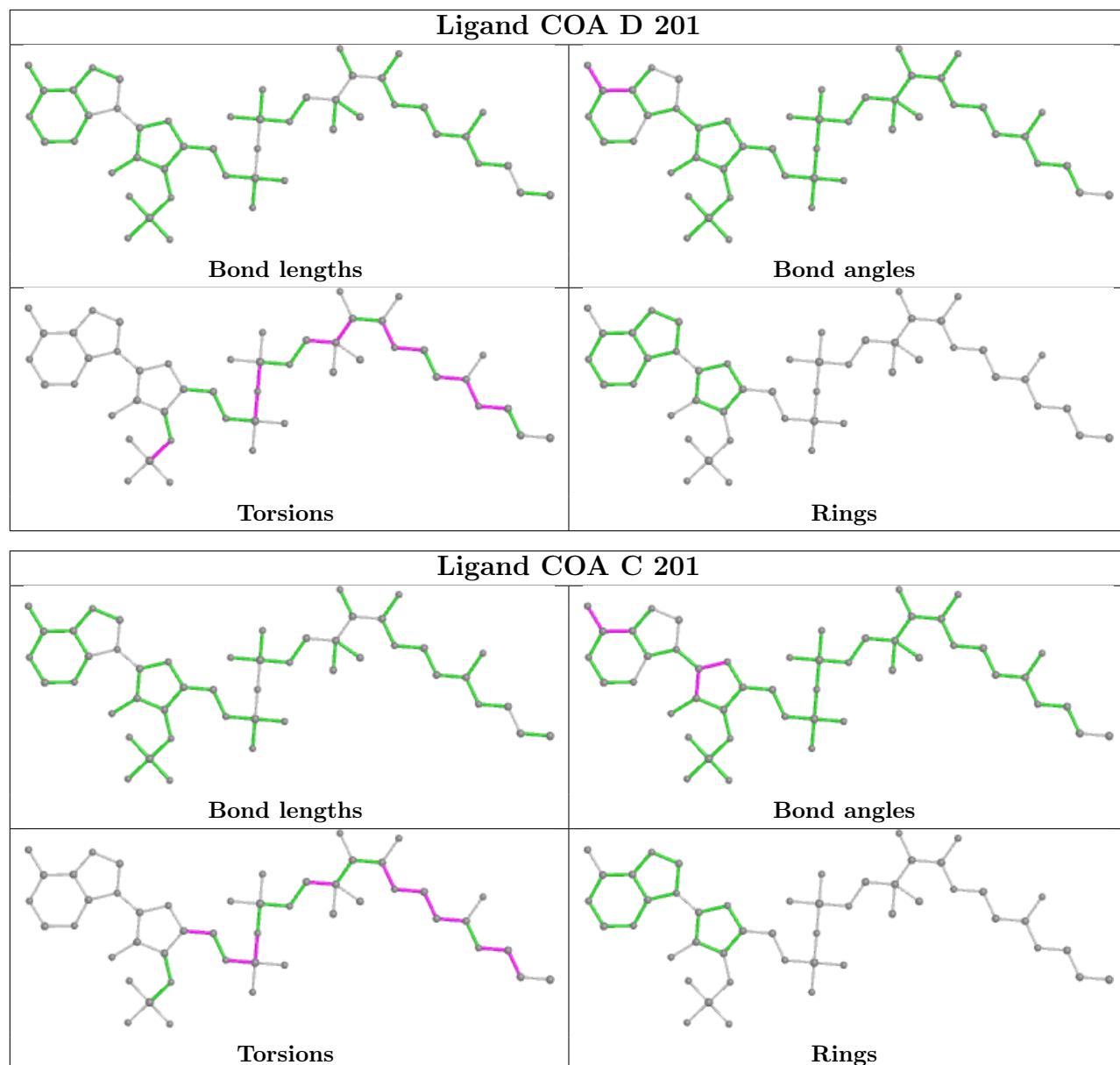
6 monomers are involved in 28 short contacts:

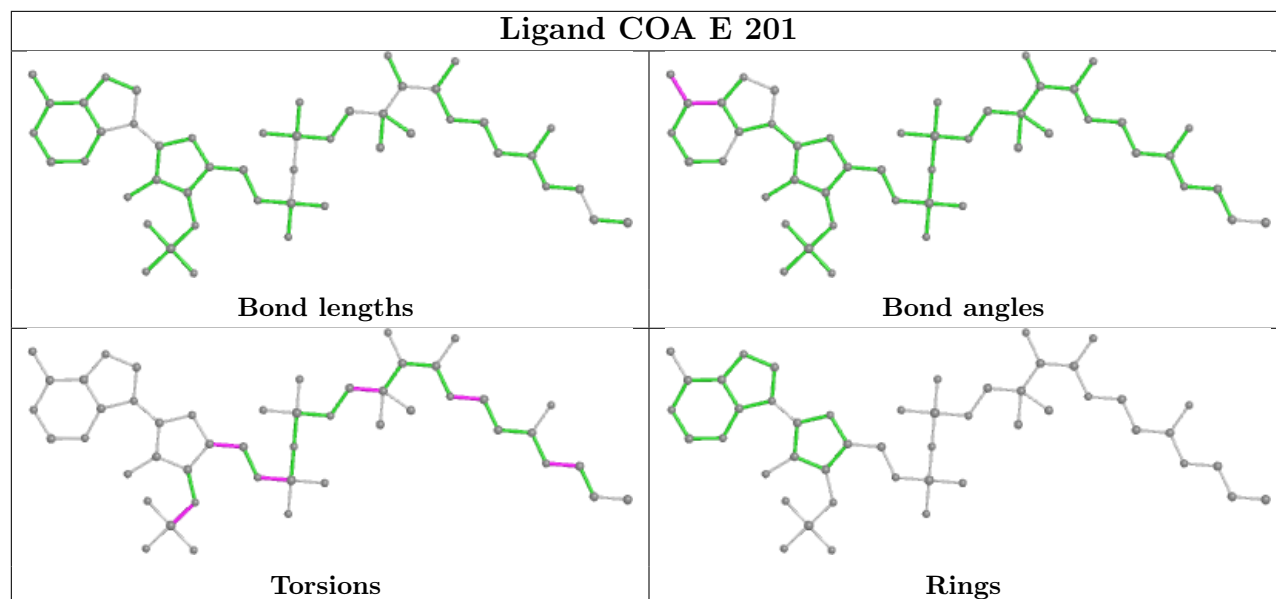
Mol	Chain	Res	Type	Clashes	Symm-Clashes
2	F	201	COA	6	0
2	A	201	COA	3	0
2	B	201	COA	5	0
2	D	201	COA	4	0
2	C	201	COA	5	0
2	E	201	COA	5	0

The following is a two-dimensional graphical depiction of Mogul quality analysis of bond lengths, bond angles, torsion angles, and ring geometry for all instances of the Ligand of Interest. In addition, ligands with molecular weight > 250 and outliers as shown on the validation Tables will also be included. For torsion angles, if less than 5% of the Mogul distribution of torsion angles is within 10 degrees of the torsion angle in question, then that torsion angle is considered an outlier. Any bond that is central to one or more torsion angles identified as an outlier by Mogul will be highlighted in the graph. For rings, the root-mean-square deviation (RMSD) between the ring in question and similar rings identified by Mogul is calculated over all ring torsion angles. If the average RMSD is greater than 60 degrees and the minimal RMSD between the ring in question and any Mogul-identified rings is also greater than 60 degrees, then that ring is considered an outlier. The outliers are highlighted in purple. The color gray indicates Mogul did not find sufficient equivalents in the CSD to analyse the geometry.









5.7 Other polymers [i](#)

There are no such residues in this entry.

5.8 Polymer linkage issues [i](#)

There are no chain breaks in this entry.

6 Fit of model and data [i](#)

6.1 Protein, DNA and RNA chains [i](#)

In the following table, the column labelled ‘#RSRZ> 2’ contains the number (and percentage) of RSRZ outliers, followed by percent RSRZ outliers for the chain as percentile scores relative to all X-ray entries and entries of similar resolution. The OWAB column contains the minimum, median, 95th percentile and maximum values of the occupancy-weighted average B-factor per residue. The column labelled ‘Q< 0.9’ lists the number of (and percentage) of residues with an average occupancy less than 0.9.

Mol	Chain	Analysed	<RSRZ>	#RSRZ>2	OWAB(Å ²)	Q<0.9
1	A	168/178 (94%)	0.58	9 (5%) 25 22	43, 78, 119, 146	0
1	B	163/178 (91%)	0.50	3 (1%) 68 67	53, 78, 112, 142	0
1	C	168/178 (94%)	0.56	6 (3%) 42 37	47, 75, 117, 144	0
1	D	163/178 (91%)	0.42	6 (3%) 41 37	48, 79, 114, 124	0
1	E	162/178 (91%)	0.40	2 (1%) 79 79	46, 71, 107, 131	0
1	F	162/178 (91%)	0.41	1 (0%) 89 89	45, 71, 106, 139	0
All	All	986/1068 (92%)	0.48	27 (2%) 54 50	43, 75, 114, 146	0

All (27) RSRZ outliers are listed below:

Mol	Chain	Res	Type	RSRZ
1	C	99	LEU	4.7
1	E	99	LEU	4.1
1	A	168	TRP	4.0
1	A	99	LEU	3.8
1	D	98	LEU	3.5
1	A	125	PRO	3.3
1	A	5	PHE	3.0
1	C	137	LEU	2.8
1	D	129	PRO	2.8
1	C	3	LYS	2.8
1	A	50	ARG	2.7
1	D	25	HIS	2.7
1	C	48	HIS	2.7
1	B	29	PHE	2.7
1	F	163	THR	2.6
1	A	139	LYS	2.4
1	D	144	ARG	2.3
1	E	89	VAL	2.2
1	B	162	LEU	2.2

Continued on next page...

Continued from previous page...

Mol	Chain	Res	Type	RSRZ
1	C	142	LEU	2.1
1	A	117	LYS	2.1
1	B	61	VAL	2.1
1	A	98	LEU	2.0
1	A	170	ILE	2.0
1	D	85	SER	2.0
1	C	168	TRP	2.0
1	D	80	CYS	2.0

6.2 Non-standard residues in protein, DNA, RNA chains [i](#)

There are no non-standard protein/DNA/RNA residues in this entry.

6.3 Carbohydrates [i](#)

There are no monosaccharides in this entry.

6.4 Ligands [i](#)

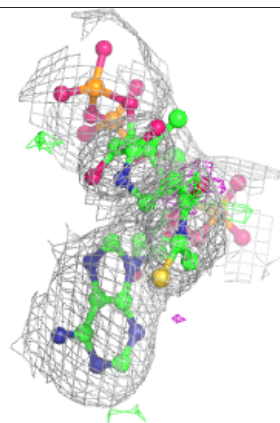
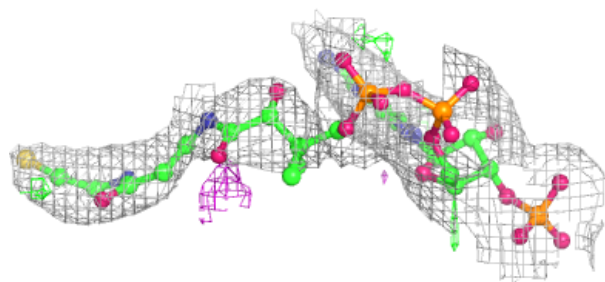
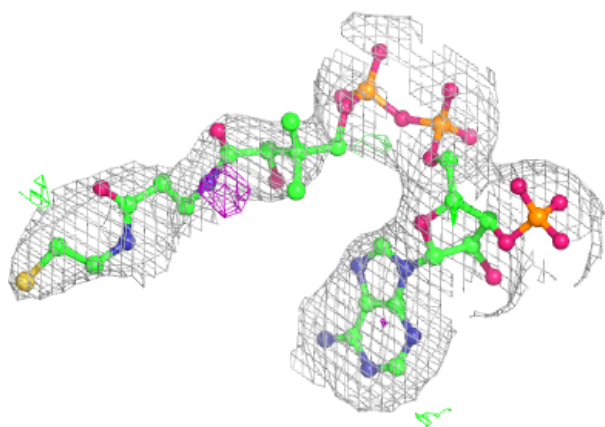
In the following table, the Atoms column lists the number of modelled atoms in the group and the number defined in the chemical component dictionary. The B-factors column lists the minimum, median, 95th percentile and maximum values of B factors of atoms in the group. The column labelled 'Q< 0.9' lists the number of atoms with occupancy less than 0.9.

Mol	Type	Chain	Res	Atoms	RSCC	RSR	B-factors(Å ²)	Q<0.9
2	COA	C	201	48/48	0.91	0.22	61,90,106,120	0
2	COA	B	201	48/48	0.92	0.17	50,84,100,129	0
2	COA	A	201	48/48	0.92	0.19	57,89,115,159	0
2	COA	D	201	48/48	0.92	0.19	53,78,94,101	0
2	COA	E	201	48/48	0.93	0.19	57,76,91,95	0
2	COA	F	201	48/48	0.93	0.19	57,72,94,104	0

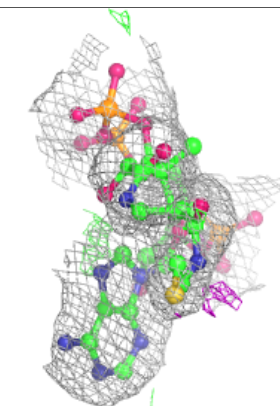
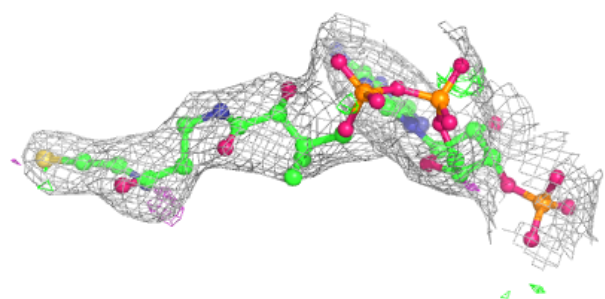
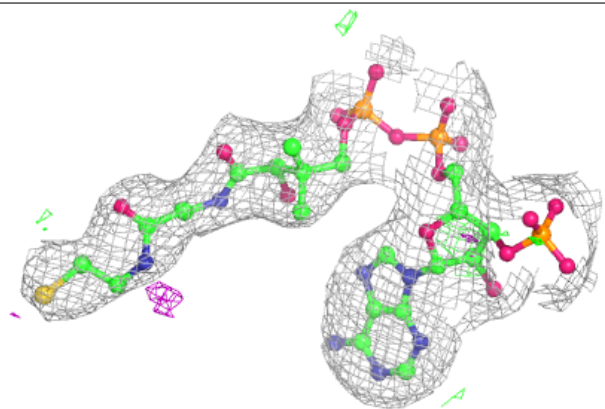
The following is a graphical depiction of the model fit to experimental electron density of all instances of the Ligand of Interest. In addition, ligands with molecular weight > 250 and outliers as shown on the geometry validation Tables will also be included. Each fit is shown from different orientation to approximate a three-dimensional view.

Electron density around COA C 201:

$2mF_o-DF_c$ (at 0.7 rmsd) in gray
 mF_o-DF_c (at 3 rmsd) in purple (negative)
and green (positive)

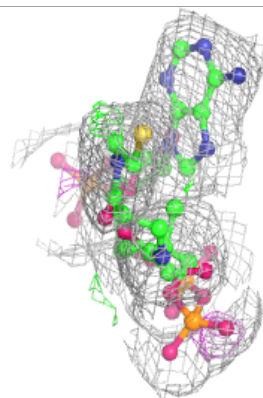
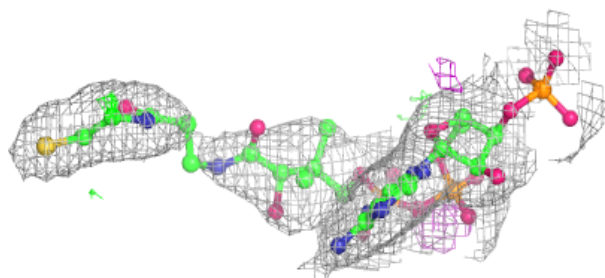
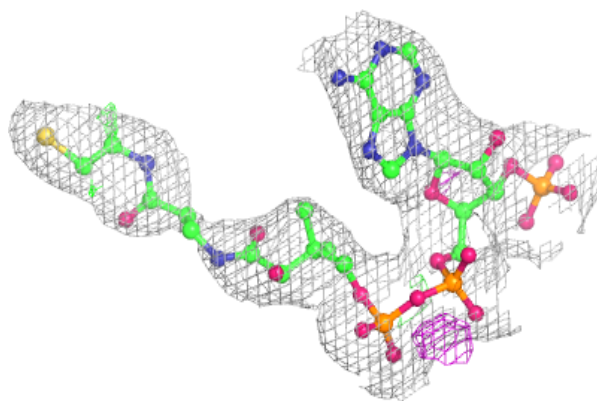
**Electron density around COA B 201:**

$2mF_o-DF_c$ (at 0.7 rmsd) in gray
 mF_o-DF_c (at 3 rmsd) in purple (negative)
and green (positive)

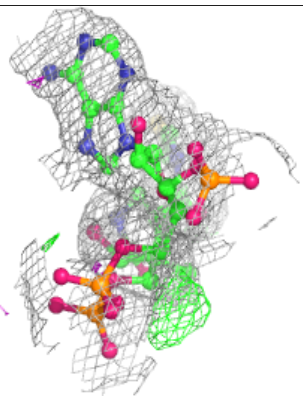
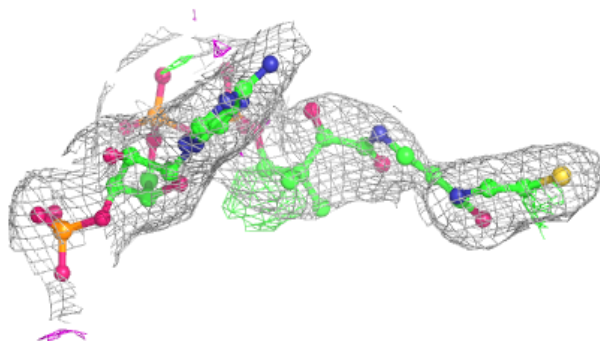
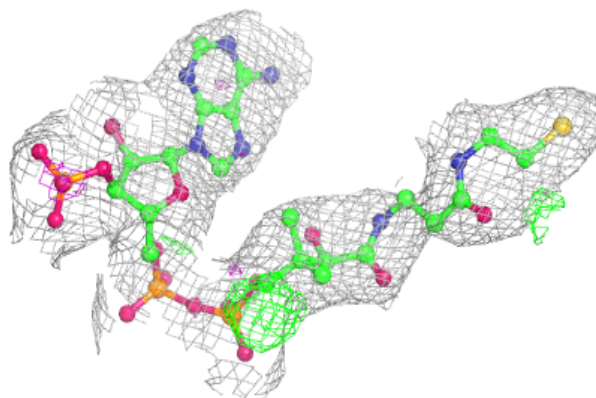


Electron density around COA A 201:

$2mF_o-DF_c$ (at 0.7 rmsd) in gray
 mF_o-DF_c (at 3 rmsd) in purple (negative)
and green (positive)

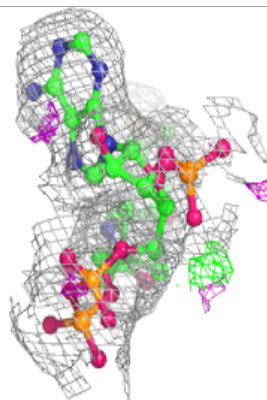
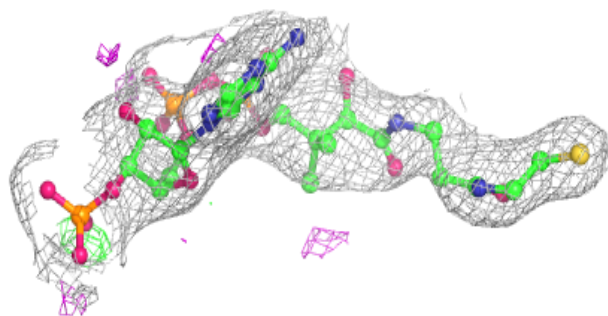
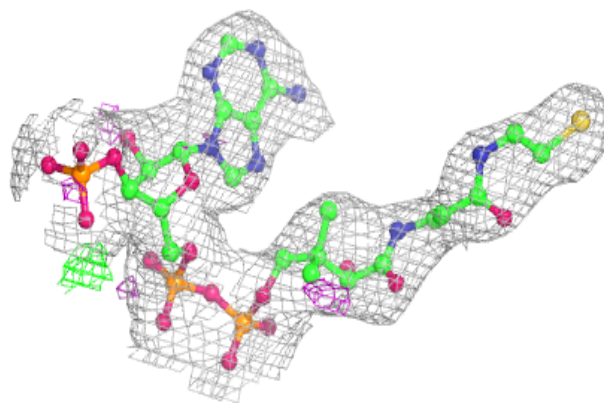
**Electron density around COA D 201:**

$2mF_o-DF_c$ (at 0.7 rmsd) in gray
 mF_o-DF_c (at 3 rmsd) in purple (negative)
and green (positive)

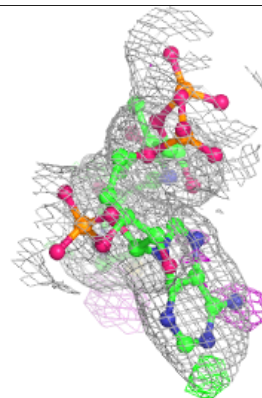
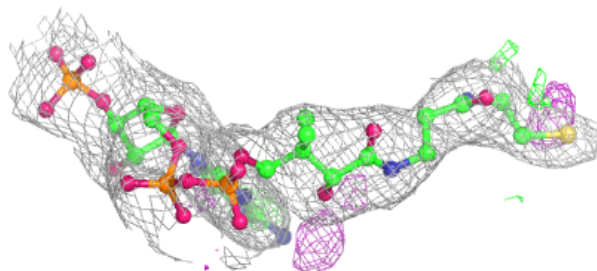
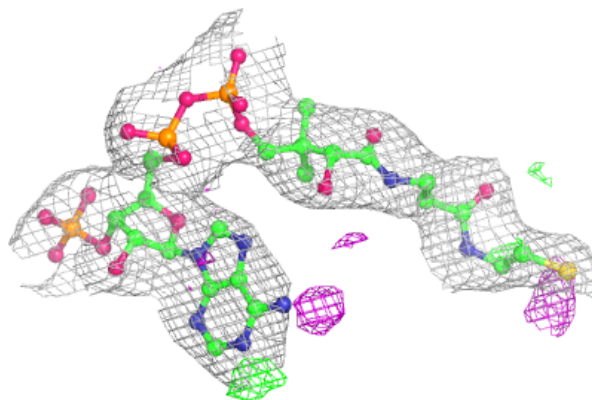


Electron density around COA E 201:

$2mF_o-DF_c$ (at 0.7 rmsd) in gray
 mF_o-DF_c (at 3 rmsd) in purple (negative)
and green (positive)

**Electron density around COA F 201:**

$2mF_o-DF_c$ (at 0.7 rmsd) in gray
 mF_o-DF_c (at 3 rmsd) in purple (negative)
and green (positive)



6.5 Other polymers [i](#)

There are no such residues in this entry.