



# Full wwPDB X-ray Structure Validation Report ⓘ

May 14, 2020 – 03:04 am BST

PDB ID : 4CX3  
Title : Structure of rat neuronal nitric oxide synthase M336V D597N mutant heme domain in complex with 4-METHYL-6-(((3R,4R)-4-((5-(PYRIDIN-2-YL) PENTYL)OXY)PYRROLIDIN-3-YL)METHYL)PYRIDIN-2-AMINE  
Authors : Li, H.; Poulos, T.L.  
Deposited on : 2014-04-03  
Resolution : 1.97 Å(reported)

This is a Full wwPDB X-ray Structure Validation Report for a publicly released PDB entry.

We welcome your comments at [validation@mail.wwpdb.org](mailto:validation@mail.wwpdb.org)

A user guide is available at

<https://www.wwpdb.org/validation/2017/XrayValidationReportHelp>

with specific help available everywhere you see the ⓘ symbol.

---

The following versions of software and data (see [references ⓘ](#)) were used in the production of this report:

MolProbity : 4.02b-467  
Mogul : 1.8.5 (274361), CSD as541be (2020)  
Xtriage (Phenix) : 1.13  
EDS : 2.11  
buster-report : 1.1.7 (2018)  
Percentile statistics : 20191225.v01 (using entries in the PDB archive December 25th 2019)  
Refmac : 5.8.0158  
CCP4 : 7.0.044 (Gargrove)  
Ideal geometry (proteins) : Engh & Huber (2001)  
Ideal geometry (DNA, RNA) : Parkinson et al. (1996)  
Validation Pipeline (wwPDB-VP) : 2.11

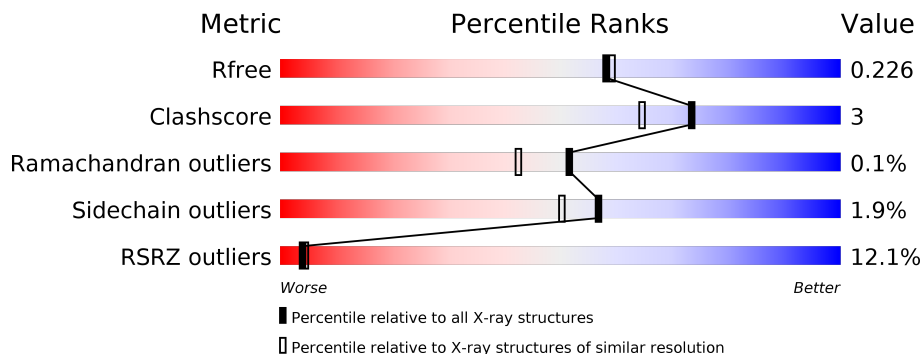
# 1 Overall quality at a glance

The following experimental techniques were used to determine the structure:

*X-RAY DIFFRACTION*

The reported resolution of this entry is 1.97 Å.

Percentile scores (ranging between 0-100) for global validation metrics of the entry are shown in the following graphic. The table shows the number of entries on which the scores are based.



Metric	Whole archive (#Entries)	Similar resolution (#Entries, resolution range(Å))
$R_{free}$	130704	11647 (2.00-1.96)
Clashscore	141614	1014 (1.98-1.98)
Ramachandran outliers	138981	1006 (1.98-1.98)
Sidechain outliers	138945	1006 (1.98-1.98)
RSRZ outliers	127900	11410 (2.00-1.96)

The table below summarises the geometric issues observed across the polymeric chains and their fit to the electron density. The red, orange, yellow and green segments on the lower bar indicate the fraction of residues that contain outliers for  $\geq 3$ , 2, 1 and 0 types of geometric quality criteria respectively. A grey segment represents the fraction of residues that are not modelled. The numeric value for each fraction is indicated below the corresponding segment, with a dot representing fractions  $\leq 5\%$ . The upper red bar (where present) indicates the fraction of residues that have poor fit to the electron density. The numeric value is given above the bar.

Mol	Chain	Length	Quality of chain
1	A	422	
1	B	422	

The following table lists non-polymeric compounds, carbohydrate monomers and non-standard residues in protein, DNA, RNA chains that are outliers for geometric or electron-density-fit criteria:

Mol	Type	Chain	Res	Chirality	Geometry	Clashes	Electron density
6	GOL	B	880	-	-	X	-

## 2 Entry composition [i](#)

There are 8 unique types of molecules in this entry. The entry contains 7310 atoms, of which 0 are hydrogens and 0 are deuteriums.

In the tables below, the ZeroOcc column contains the number of atoms modelled with zero occupancy, the AltConf column contains the number of residues with at least one atom in alternate conformation and the Trace column contains the number of residues modelled with at most 2 atoms.

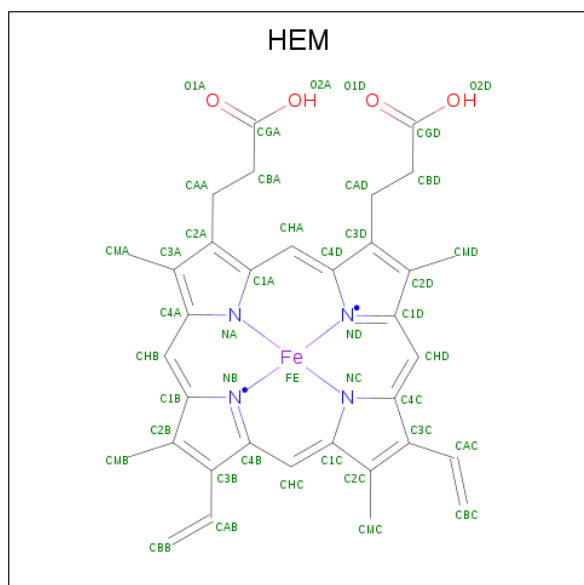
- Molecule 1 is a protein called NITRIC OXIDE SYNTHASE, BRAIN.

Mol	Chain	Residues	Atoms					ZeroOcc	AltConf	Trace
			Total	C	N	O	S			
1	A	408	Total 3330	C 2132	N 570	O 608	S 20	0	3	1
1	B	411	Total 3359	C 2150	N 575	O 613	S 21	0	4	0

There are 4 discrepancies between the modelled and reference sequences:

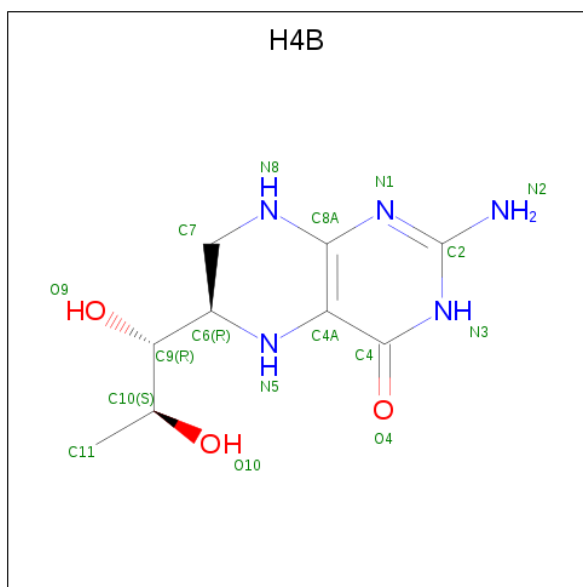
Chain	Residue	Modelled	Actual	Comment	Reference
A	336	VAL	MET	engineered mutation	UNP P29476
A	597	ASN	ASP	engineered mutation	UNP P29476
B	336	VAL	MET	engineered mutation	UNP P29476
B	597	ASN	ASP	engineered mutation	UNP P29476

- Molecule 2 is PROTOPORPHYRIN IX CONTAINING FE (three-letter code: HEM) (formula:  $C_{34}H_{32}FeN_4O_4$ ).



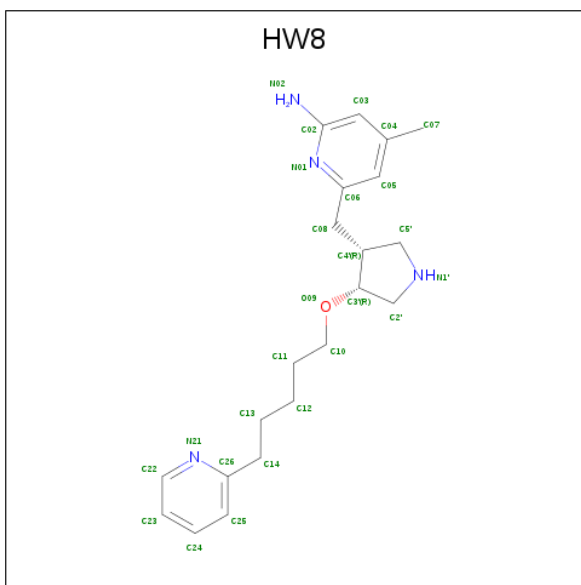
Mol	Chain	Residues	Atoms				ZeroOcc	AltConf	
2	A	1	Total	C	Fe	N	O	0	0
			43	34	1	4	4		
2	B	1	Total	C	Fe	N	O	0	0
			43	34	1	4	4		

- Molecule 3 is 5,6,7,8-TETRAHYDROBIOPTERIN (three-letter code: H4B) (formula:  $C_9H_{15}N_5O_3$ ).



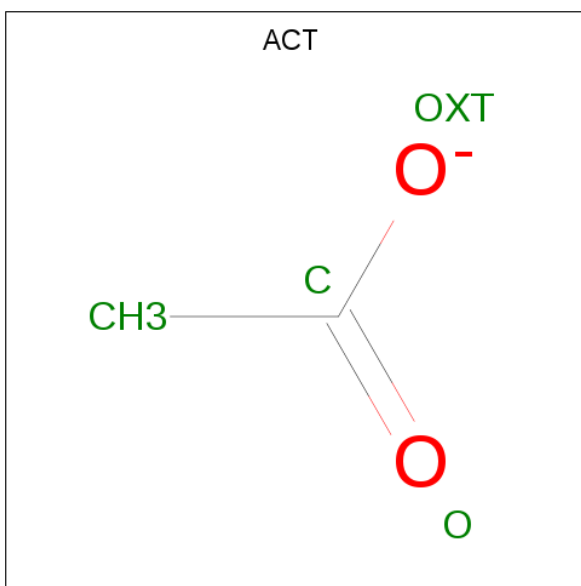
Mol	Chain	Residues	Atoms				ZeroOcc	AltConf
3	A	1	Total	C	N	O	0	0
			17	9	5	3		
3	B	1	Total	C	N	O	0	0
			17	9	5	3		

- Molecule 4 is 4-methyl-6-[(3R,4R)-4-[[5-(pyridin-2-yl)pentyl]oxy]pyrrolidin-3-yl]methyl]pyridin-2-amine (three-letter code: HW8) (formula:  $C_{21}H_{30}N_4O$ ).



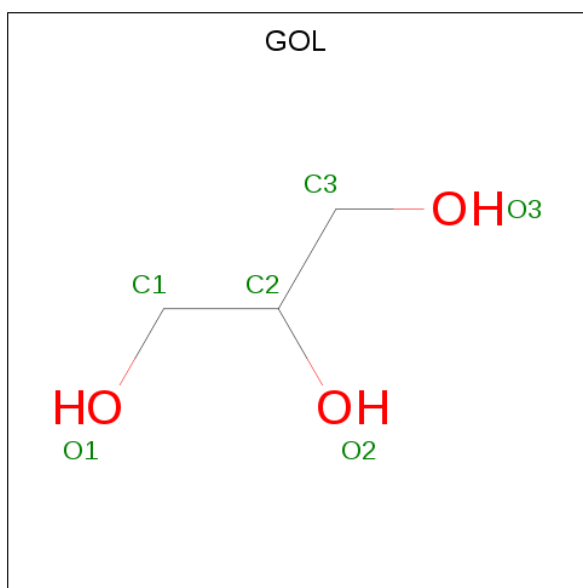
Mol	Chain	Residues	Atoms				ZeroOcc	AltConf
			Total	C	N	O		
4	A	1	26	21	4	1	0	0
4	B	1	26	21	4	1	0	0

- Molecule 5 is ACETATE ION (three-letter code: ACT) (formula:  $C_2H_3O_2$ ).



Mol	Chain	Residues	Atoms			ZeroOcc	AltConf
			Total	C	O		
5	A	1	4	2	2	0	0
5	B	1	4	2	2	0	0

- Molecule 6 is GLYCEROL (three-letter code: GOL) (formula:  $C_3H_8O_3$ ).



Mol	Chain	Residues	Atoms	ZeroOcc	AltConf
6	A	1	Total C O 6 3 3	0	0
6	B	1	Total C O 6 3 3	0	0

- Molecule 7 is ZINC ION (three-letter code: ZN) (formula: Zn).

Mol	Chain	Residues	Atoms	ZeroOcc	AltConf
7	B	1	Total Zn 1 1	0	0

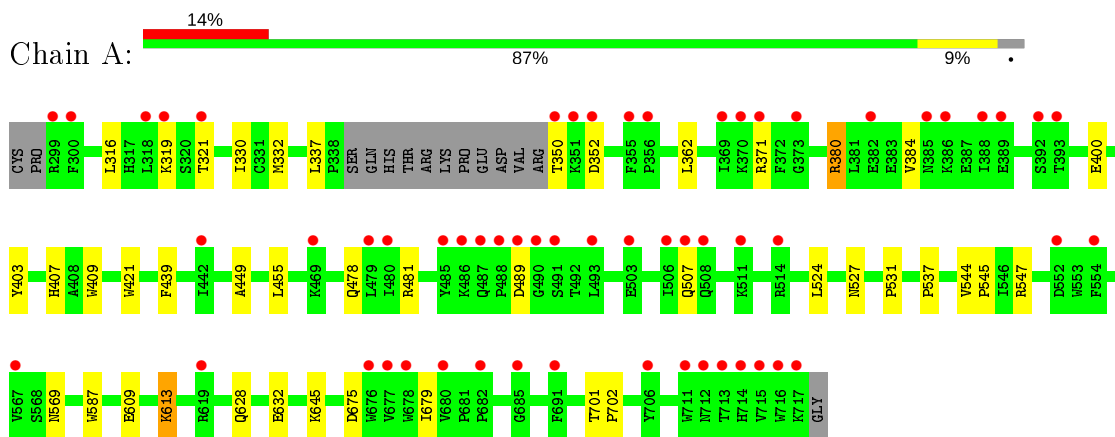
- Molecule 8 is water.

Mol	Chain	Residues	Atoms	ZeroOcc	AltConf
8	A	196	Total O 196 196	0	0
8	B	232	Total O 232 232	0	0

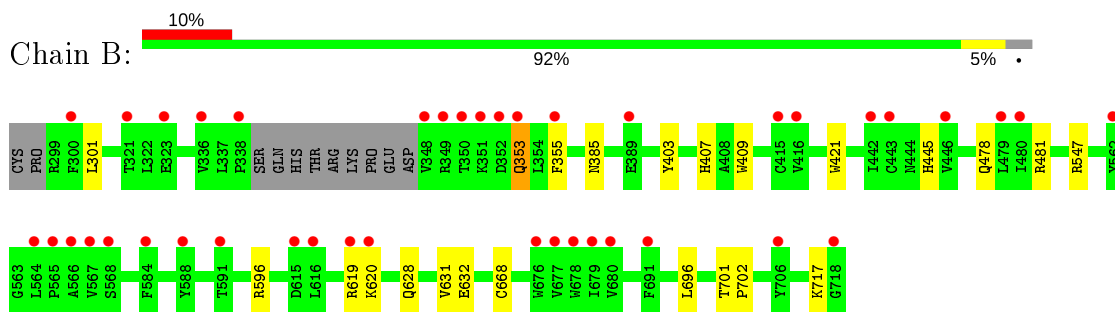
### 3 Residue-property plots [i](#)

These plots are drawn for all protein, RNA and DNA chains in the entry. The first graphic for a chain summarises the proportions of the various outlier classes displayed in the second graphic. The second graphic shows the sequence view annotated by issues in geometry and electron density. Residues are color-coded according to the number of geometric quality criteria for which they contain at least one outlier: green = 0, yellow = 1, orange = 2 and red = 3 or more. A red dot above a residue indicates a poor fit to the electron density ( $RSRZ > 2$ ). Stretches of 2 or more consecutive residues without any outlier are shown as a green connector. Residues present in the sample, but not in the model, are shown in grey.

- Molecule 1: NITRIC OXIDE SYNTHASE, BRAIN



- Molecule 1: NITRIC OXIDE SYNTHASE, BRAIN





## 4 Data and refinement statistics

Property	Value	Source
Space group	P 21 21 21	Depositor
Cell constants a, b, c, $\alpha$ , $\beta$ , $\gamma$	51.92Å 110.68Å 164.33Å 90.00° 90.00° 90.00°	Depositor
Resolution (Å)	43.89 – 1.97 43.89 – 1.97	Depositor EDS
% Data completeness (in resolution range)	98.6 (43.89-1.97) 98.6 (43.89-1.97)	Depositor EDS
$R_{merge}$	0.04	Depositor
$R_{sym}$	(Not available)	Depositor
$\langle I/\sigma(I) \rangle$ <sup>1</sup>	3.83 (at 1.97Å)	Xtrriage
Refinement program	REFMAC 5.5.0109	Depositor
R, $R_{free}$	0.175 , 0.209 0.192 , 0.226	Depositor DCC
$R_{free}$ test set	3323 reflections (4.96%)	wwPDB-VP
Wilson B-factor (Å <sup>2</sup> )	29.4	Xtrriage
Anisotropy	0.782	Xtrriage
Bulk solvent $k_{sol}$ (e/Å <sup>3</sup> ), $B_{sol}$ (Å <sup>2</sup> )	0.37 , 45.5	EDS
L-test for twinning <sup>2</sup>	$\langle  L  \rangle = 0.49$ , $\langle L^2 \rangle = 0.32$	Xtrriage
Estimated twinning fraction	No twinning to report.	Xtrriage
$F_o, F_c$ correlation	0.95	EDS
Total number of atoms	7310	wwPDB-VP
Average B, all atoms (Å <sup>2</sup> )	39.0	wwPDB-VP

Xtrriage's analysis on translational NCS is as follows: *The largest off-origin peak in the Patterson function is 3.37% of the height of the origin peak. No significant pseudotranslation is detected.*

<sup>1</sup>Intensities estimated from amplitudes.

<sup>2</sup>Theoretical values of  $\langle |L| \rangle$ ,  $\langle L^2 \rangle$  for acentric reflections are 0.5, 0.333 respectively for untwinned datasets, and 0.375, 0.2 for perfectly twinned datasets.

## 5 Model quality [i](#)

### 5.1 Standard geometry [i](#)

Bond lengths and bond angles in the following residue types are not validated in this section: GOL, ZN, H4B, HW8, ACT, HEM

The Z score for a bond length (or angle) is the number of standard deviations the observed value is removed from the expected value. A bond length (or angle) with  $|Z| > 5$  is considered an outlier worth inspection. RMSZ is the root-mean-square of all Z scores of the bond lengths (or angles).

Mol	Chain	Bond lengths		Bond angles	
		RMSZ	# Z  >5	RMSZ	# Z  >5
1	A	0.64	0/3432	0.65	0/4658
1	B	0.69	0/3464	0.66	0/4697
All	All	0.67	0/6896	0.66	0/9355

There are no bond length outliers.

There are no bond angle outliers.

There are no chirality outliers.

There are no planarity outliers.

### 5.2 Too-close contacts [i](#)

In the following table, the Non-H and H(model) columns list the number of non-hydrogen atoms and hydrogen atoms in the chain respectively. The H(added) column lists the number of hydrogen atoms added and optimized by MolProbity. The Clashes column lists the number of clashes within the asymmetric unit, whereas Symm-Clashes lists symmetry related clashes.

Mol	Chain	Non-H	H(model)	H(added)	Clashes	Symm-Clashes
1	A	3330	0	3243	25	0
1	B	3359	0	3282	17	0
2	A	43	0	30	3	0
2	B	43	0	30	1	0
3	A	17	0	15	0	0
3	B	17	0	15	1	0
4	A	26	0	30	4	0
4	B	26	0	30	3	0
5	A	4	0	3	0	0
5	B	4	0	3	0	0
6	A	6	0	8	0	0

*Continued on next page...*

*Continued from previous page...*

Mol	Chain	Non-H	H(model)	H(added)	Clashes	Symm-Clashes
6	B	6	0	8	4	0
7	B	1	0	0	0	0
8	A	196	0	0	2	0
8	B	232	0	0	4	0
All	All	7310	0	6697	45	0

The all-atom clashscore is defined as the number of clashes found per 1000 atoms (including hydrogen atoms). The all-atom clashscore for this structure is 3.

All (45) close contacts within the same asymmetric unit are listed below, sorted by their clash magnitude.

Atom-1	Atom-2	Interatomic distance (Å)	Clash overlap (Å)
1:B:717:LYS:NZ	8:B:2161:HOH:O	2.14	0.80
2:A:750:HEM:HMC2	2:A:750:HEM:HBC2	1.64	0.77
1:A:316:LEU:HD12	1:A:319:LYS:HD2	1.84	0.60
1:B:596:ARG:HH22	6:B:880:GOL:H11	1.66	0.60
2:B:750:HEM:HBB2	2:B:750:HEM:HHC	1.84	0.59
1:A:380:ARG:HD3	1:A:400:GLU:OE2	2.04	0.57
1:A:632:GLU:OE2	1:B:628:GLN:NE2	2.43	0.51
1:A:337:LEU:CD2	4:A:800:HW8:H3	2.40	0.51
1:A:609:GLU:O	1:A:613:LYS:HG2	2.11	0.51
1:A:478:GLN:HB2	1:A:481:ARG:HG3	1.94	0.49
1:A:330:ILE:HD11	1:B:696:LEU:HB3	1.94	0.48
2:A:750:HEM:HHC	2:A:750:HEM:HBB2	1.95	0.47
1:B:403:TYR:CE1	1:B:407:HIS:CE1	3.03	0.47
1:A:524:LEU:O	1:A:531:PRO:HA	2.14	0.47
1:A:609:GLU:HG3	8:A:2153:HOH:O	2.16	0.46
1:A:332:MET:HE3	1:B:301:LEU:HD22	1.96	0.46
1:A:337:LEU:HD21	4:A:800:HW8:H3	1.98	0.46
1:A:362:LEU:HD11	1:A:384:VAL:HG21	1.96	0.46
1:B:409:TRP:CE3	1:B:421:TRP:HA	2.50	0.46
1:A:628:GLN:HG2	1:B:631:VAL:HG11	1.97	0.46
2:A:750:HEM:CMC	2:A:750:HEM:HBC2	2.39	0.45
1:A:319:LYS:HE3	8:A:2005:HOH:O	2.17	0.45
1:A:403:TYR:CE1	1:A:407:HIS:CE1	3.05	0.45
1:B:596:ARG:HH22	6:B:880:GOL:C1	2.30	0.45
4:B:800:HW8:H13	6:B:880:GOL:H32	1.82	0.45
1:A:628:GLN:NE2	1:B:632:GLU:OE2	2.50	0.45
4:B:800:HW8:C2'	8:B:2230:HOH:O	2.67	0.43
1:A:455:LEU:HD12	1:A:587:TRP:HB3	2.01	0.43
4:B:800:HW8:H17	8:B:2230:HOH:O	2.19	0.42

*Continued on next page...*

Continued from previous page...

Atom-1	Atom-2	Interatomic distance (Å)	Clash overlap (Å)
1:A:409:TRP:CE3	1:A:421:TRP:HA	2.54	0.42
1:B:619:ARG:HE	1:B:619:ARG:HB2	1.52	0.42
1:B:353:GLN:HG2	1:B:353:GLN:H	1.66	0.42
1:B:355:PHE:CE1	1:B:385:ASN:HB2	2.54	0.42
1:A:439:PHE:HZ	1:A:537:PRO:HD3	1.84	0.42
1:B:445:HIS:C	1:B:445:HIS:CD2	2.93	0.42
1:B:668[B]:CYS:SG	8:B:2218:HOH:O	2.27	0.42
3:B:760:H4B:O4	6:B:880:GOL:H12	2.20	0.41
1:A:544:VAL:HA	1:A:545:PRO:HD2	1.95	0.41
1:A:337:LEU:HD23	4:A:800:HW8:H3	2.02	0.41
1:A:675:ASP:O	1:A:679:ILE:HG12	2.21	0.41
1:A:337:LEU:HD21	4:A:800:HW8:H5	2.02	0.41
1:B:478:GLN:HB2	1:B:481:ARG:HG3	2.03	0.41
1:B:701:THR:HA	1:B:702:PRO:C	2.41	0.40
1:A:449:ALA:O	1:A:455:LEU:HA	2.21	0.40
1:A:701:THR:HA	1:A:702:PRO:C	2.42	0.40

There are no symmetry-related clashes.

## 5.3 Torsion angles [i](#)

### 5.3.1 Protein backbone [i](#)

In the following table, the Percentiles column shows the percent Ramachandran outliers of the chain as a percentile score with respect to all X-ray entries followed by that with respect to entries of similar resolution.

The Analysed column shows the number of residues for which the backbone conformation was analysed, and the total number of residues.

Mol	Chain	Analysed	Favoured	Allowed	Outliers	Percentiles	
1	A	407/422 (96%)	398 (98%)	8 (2%)	1 (0%)	47	38
1	B	411/422 (97%)	404 (98%)	7 (2%)	0	100	100
All	All	818/844 (97%)	802 (98%)	15 (2%)	1 (0%)	51	42

All (1) Ramachandran outliers are listed below:

Mol	Chain	Res	Type
1	A	489	ASP

### 5.3.2 Protein sidechains [i](#)

In the following table, the Percentiles column shows the percent sidechain outliers of the chain as a percentile score with respect to all X-ray entries followed by that with respect to entries of similar resolution.

The Analysed column shows the number of residues for which the sidechain conformation was analysed, and the total number of residues.

Mol	Chain	Analysed	Rotameric	Outliers	Percentiles	
1	A	366/377 (97%)	355 (97%)	11 (3%)	41	29
1	B	370/377 (98%)	367 (99%)	3 (1%)	81	80
All	All	736/754 (98%)	722 (98%)	14 (2%)	57	50

All (14) residues with a non-rotameric sidechain are listed below:

Mol	Chain	Res	Type
1	A	321	THR
1	A	350	THR
1	A	352	ASP
1	A	371	ARG
1	A	380	ARG
1	A	507	GLN
1	A	527	ASN
1	A	547	ARG
1	A	569	ASN
1	A	613	LYS
1	A	645	LYS
1	B	353	GLN
1	B	547	ARG
1	B	620	LYS

Some sidechains can be flipped to improve hydrogen bonding and reduce clashes. All (15) such sidechains are listed below:

Mol	Chain	Res	Type
1	A	440	ASN
1	A	454	ASN
1	A	527	ASN
1	A	569	ASN
1	A	605	ASN
1	A	628	GLN
1	A	697	ASN
1	B	364	GLN

*Continued on next page...*

*Continued from previous page...*

Mol	Chain	Res	Type
1	B	425	GLN
1	B	454	ASN
1	B	507	GLN
1	B	601	ASN
1	B	605	ASN
1	B	628	GLN
1	B	697	ASN

### 5.3.3 RNA [i](#)

There are no RNA molecules in this entry.

### 5.4 Non-standard residues in protein, DNA, RNA chains [i](#)

There are no non-standard protein/DNA/RNA residues in this entry.

### 5.5 Carbohydrates [i](#)

There are no carbohydrates in this entry.

### 5.6 Ligand geometry [i](#)

Of 11 ligands modelled in this entry, 1 is monoatomic - leaving 10 for Mogul analysis.

In the following table, the Counts columns list the number of bonds (or angles) for which Mogul statistics could be retrieved, the number of bonds (or angles) that are observed in the model and the number of bonds (or angles) that are defined in the Chemical Component Dictionary. The Link column lists molecule types, if any, to which the group is linked. The Z score for a bond length (or angle) is the number of standard deviations the observed value is removed from the expected value. A bond length (or angle) with  $|Z| > 2$  is considered an outlier worth inspection. RMSZ is the root-mean-square of all Z scores of the bond lengths (or angles).

Mol	Type	Chain	Res	Link	Bond lengths			Bond angles		
					Counts	RMSZ	# Z  > 2	Counts	RMSZ	# Z  > 2
6	GOL	B	880	-	5,5,5	0.42	0	5,5,5	0.50	0
4	HW8	B	800	-	27,28,28	0.68	0	30,36,36	2.07	6 (20%)
2	HEM	A	750	1	27,50,50	2.20	8 (29%)	17,82,82	2.10	4 (23%)
2	HEM	B	750	1	27,50,50	2.19	9 (33%)	17,82,82	2.17	4 (23%)
5	ACT	A	860	-	1,3,3	1.68	0	0,3,3	0.00	-
6	GOL	A	880	-	5,5,5	0.43	0	5,5,5	0.55	0

Mol	Type	Chain	Res	Link	Bond lengths			Bond angles		
					Counts	RMSZ	# Z  > 2	Counts	RMSZ	# Z  > 2
3	H4B	B	760	-	16,18,18	1.43	3 (18%)	11,26,26	2.49	4 (36%)
4	HW8	A	800	-	27,28,28	0.60	0	30,36,36	2.04	9 (30%)
5	ACT	B	860	-	1,3,3	1.67	0	0,3,3	0.00	-
3	H4B	A	760	-	16,18,18	0.94	0	11,26,26	2.66	6 (54%)

In the following table, the Chirals column lists the number of chiral outliers, the number of chiral centers analysed, the number of these observed in the model and the number defined in the Chemical Component Dictionary. Similar counts are reported in the Torsion and Rings columns. '-' means no outliers of that kind were identified.

Mol	Type	Chain	Res	Link	Chirals	Torsions	Rings
6	GOL	B	880	-	-	2/4/4/4	-
4	HW8	B	800	-	-	5/13/23/23	0/3/3/3
2	HEM	A	750	1	-	0/6/54/54	-
2	HEM	B	750	1	-	0/6/54/54	-
6	GOL	A	880	-	-	2/4/4/4	-
3	H4B	B	760	-	-	0/8/17/17	0/2/2/2
4	HW8	A	800	-	-	5/13/23/23	0/3/3/3
3	H4B	A	760	-	-	0/8/17/17	0/2/2/2

All (20) bond length outliers are listed below:

Mol	Chain	Res	Type	Atoms	Z	Observed(Å)	Ideal(Å)
2	A	750	HEM	C3B-C2B	-5.50	1.32	1.40
2	B	750	HEM	C3C-C2C	-5.30	1.33	1.40
2	A	750	HEM	C3D-C2D	4.88	1.52	1.37
2	B	750	HEM	C3B-C2B	-4.03	1.34	1.40
2	B	750	HEM	C3D-C2D	3.90	1.49	1.37
2	A	750	HEM	C3C-C2C	-3.74	1.35	1.40
2	A	750	HEM	C3C-CAC	3.64	1.55	1.47
2	B	750	HEM	C3C-CAC	3.59	1.55	1.47
2	A	750	HEM	C3B-CAB	3.33	1.54	1.47
2	B	750	HEM	C3B-CAB	3.23	1.54	1.47
3	B	760	H4B	C7-C6	3.21	1.55	1.52
2	B	750	HEM	CAD-C3D	2.62	1.56	1.52
2	B	750	HEM	CMD-C2D	2.36	1.56	1.51
2	B	750	HEM	CAA-C2A	2.31	1.55	1.52
3	B	760	H4B	C7-N8	2.27	1.48	1.44
2	A	750	HEM	CMD-C2D	2.18	1.56	1.51
2	A	750	HEM	CMA-C3A	2.13	1.56	1.51
2	A	750	HEM	CAA-C2A	2.12	1.55	1.52

*Continued on next page...*

*Continued from previous page...*

Mol	Chain	Res	Type	Atoms	Z	Observed(Å)	Ideal(Å)
2	B	750	HEM	CMA-C3A	2.11	1.56	1.51
3	B	760	H4B	C4-N3	2.06	1.36	1.33

All (33) bond angle outliers are listed below:

Mol	Chain	Res	Type	Atoms	Z	Observed(°)	Ideal(°)
4	B	800	HW8	C02-N01-C06	7.63	123.88	118.10
4	A	800	HW8	C02-N01-C06	5.86	122.54	118.10
2	A	750	HEM	CBD-CAD-C3D	-5.84	101.73	112.48
3	B	760	H4B	C4-C4A-C8A	5.59	119.54	114.57
2	B	750	HEM	CBA-CAA-C2A	-5.18	102.94	112.49
2	B	750	HEM	CBD-CAD-C3D	-4.66	103.89	112.48
3	A	760	H4B	C4-C4A-C8A	4.26	118.35	114.57
3	A	760	H4B	C4-N3-C2	3.78	121.93	115.93
2	A	750	HEM	CBA-CAA-C2A	-3.76	105.54	112.49
3	A	760	H4B	N3-C2-N1	-3.75	119.54	125.42
4	A	800	HW8	C2'-N1'-C5'	3.52	113.73	105.42
2	B	750	HEM	C1D-C2D-C3D	-3.42	104.62	107.00
3	B	760	H4B	C4-N3-C2	3.41	121.34	115.93
4	B	800	HW8	C2'-N1'-C5'	3.34	113.31	105.42
3	A	760	H4B	C4-C4A-N5	3.28	121.88	119.12
3	B	760	H4B	N3-C2-N1	-3.07	120.60	125.42
4	A	800	HW8	C23-C22-N21	-3.07	118.42	123.43
4	A	800	HW8	C07-C04-C05	-3.00	116.50	120.94
2	A	750	HEM	CMC-C2C-C3C	2.89	130.08	124.68
4	A	800	HW8	C22-N21-C26	2.87	121.35	117.42
3	A	760	H4B	C2-N1-C8A	2.83	120.87	114.54
4	B	800	HW8	C05-C06-N01	-2.78	119.95	122.90
4	B	800	HW8	C04-C05-C06	-2.74	118.53	120.32
2	A	750	HEM	C1D-C2D-C3D	-2.63	105.16	107.00
4	A	800	HW8	C06-C08-C4'	-2.52	107.24	115.55
4	A	800	HW8	C12-C13-C14	-2.51	103.99	113.76
4	B	800	HW8	C22-N21-C26	2.37	120.67	117.42
3	B	760	H4B	C2-N1-C8A	2.31	119.72	114.54
4	A	800	HW8	C07-C04-C03	2.30	124.34	120.94
3	A	760	H4B	N2-C2-N1	2.21	120.69	117.25
2	B	750	HEM	CMB-C2B-C3B	2.21	128.81	124.68
4	B	800	HW8	C23-C22-N21	-2.13	119.95	123.43
4	A	800	HW8	C14-C26-N21	2.03	121.07	116.91

There are no chirality outliers.

All (14) torsion outliers are listed below:



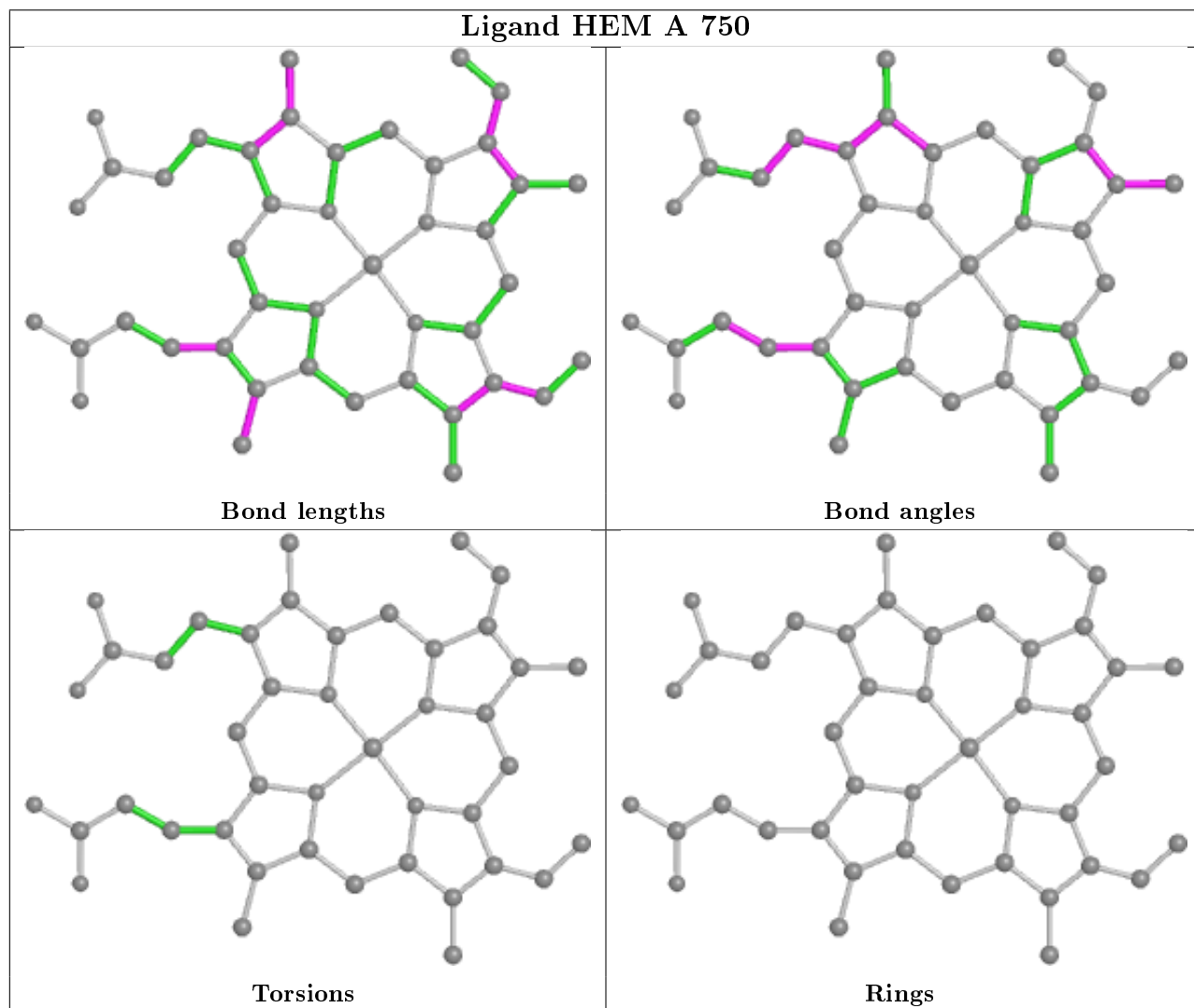
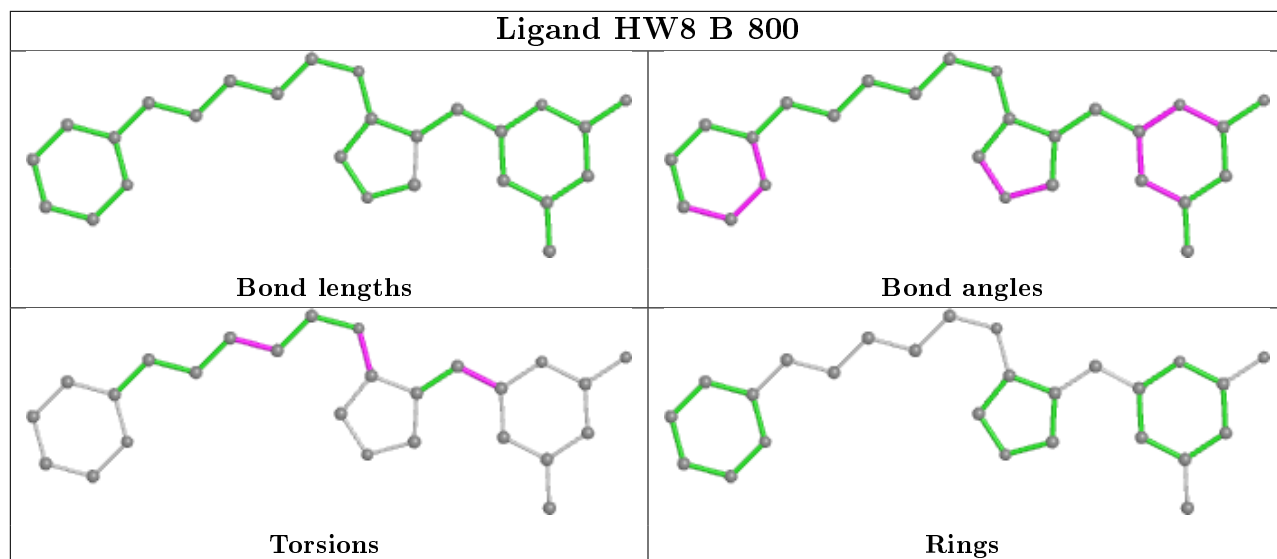
Mol	Chain	Res	Type	Atoms
6	B	880	GOL	O1-C1-C2-O2
6	B	880	GOL	O1-C1-C2-C3
4	B	800	HW8	C05-C06-C08-C4'
4	B	800	HW8	N01-C06-C08-C4'
4	A	800	HW8	C05-C06-C08-C4'
4	A	800	HW8	N01-C06-C08-C4'
6	A	880	GOL	O1-C1-C2-C3
4	B	800	HW8	C4'-C3'-O09-C10
4	A	800	HW8	C4'-C3'-O09-C10
4	B	800	HW8	C2'-C3'-O09-C10
4	A	800	HW8	C2'-C3'-O09-C10
6	A	880	GOL	O1-C1-C2-O2
4	A	800	HW8	O09-C10-C11-C12
4	B	800	HW8	C10-C11-C12-C13

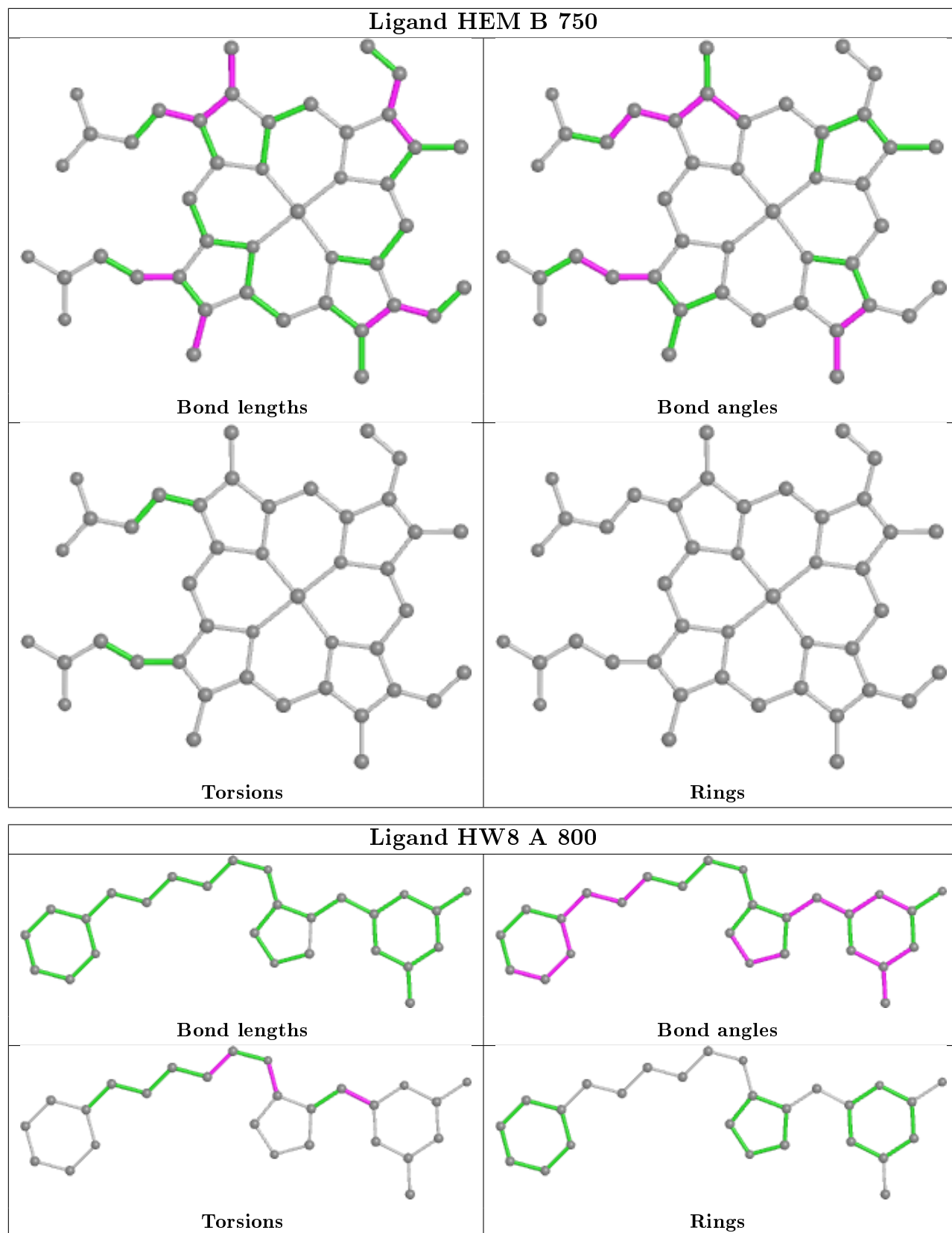
There are no ring outliers.

6 monomers are involved in 14 short contacts:

Mol	Chain	Res	Type	Clashes	Symm-Clashes
6	B	880	GOL	4	0
4	B	800	HW8	3	0
2	A	750	HEM	3	0
2	B	750	HEM	1	0
3	B	760	H4B	1	0
4	A	800	HW8	4	0

The following is a two-dimensional graphical depiction of Mogul quality analysis of bond lengths, bond angles, torsion angles, and ring geometry for all instances of the Ligand of Interest. In addition, ligands with molecular weight > 250 and outliers as shown on the validation Tables will also be included. For torsion angles, if less than 5% of the Mogul distribution of torsion angles is within 10 degrees of the torsion angle in question, then that torsion angle is considered an outlier. Any bond that is central to one or more torsion angles identified as an outlier by Mogul will be highlighted in the graph. For rings, the root-mean-square deviation (RMSD) between the ring in question and similar rings identified by Mogul is calculated over all ring torsion angles. If the average RMSD is greater than 60 degrees and the minimal RMSD between the ring in question and any Mogul-identified rings is also greater than 60 degrees, then that ring is considered an outlier. The outliers are highlighted in purple. The color gray indicates Mogul did not find sufficient equivalents in the CSD to analyse the geometry.





## 5.7 Other polymers [i](#)

There are no such residues in this entry.

## 5.8 Polymer linkage issues [i](#)

There are no chain breaks in this entry.

## 6 Fit of model and data

### 6.1 Protein, DNA and RNA chains

In the following table, the column labelled ‘#RSRZ> 2’ contains the number (and percentage) of RSRZ outliers, followed by percent RSRZ outliers for the chain as percentile scores relative to all X-ray entries and entries of similar resolution. The OWAB column contains the minimum, median, 95<sup>th</sup> percentile and maximum values of the occupancy-weighted average B-factor per residue. The column labelled ‘Q< 0.9’ lists the number of (and percentage) of residues with an average occupancy less than 0.9.

Mol	Chain	Analysed	<RSRZ>	#RSRZ>2	OWAB(Å <sup>2</sup> )	Q<0.9
1	A	408/422 (96%)	0.90	58 (14%) <b>2</b> <b>2</b>	21, 42, 75, 94	0
1	B	411/422 (97%)	0.59	41 (9%) <b>7</b> <b>8</b>	20, 33, 56, 78	0
All	All	819/844 (97%)	0.74	99 (12%) <b>4</b> <b>4</b>	20, 37, 70, 94	0

All (99) RSRZ outliers are listed below:

Mol	Chain	Res	Type	RSRZ
1	A	715	VAL	7.5
1	B	300	PHE	7.4
1	A	716	TRP	6.7
1	B	350	THR	6.5
1	A	355	PHE	6.0
1	A	352	ASP	5.6
1	A	488	PRO	5.4
1	A	351	LYS	5.2
1	B	348	VAL	5.0
1	A	714	HIS	4.6
1	B	352	ASP	4.6
1	B	321	THR	4.5
1	A	706	TYR	4.4
1	B	619	ARG	4.3
1	A	369	ILE	3.9
1	A	507	GLN	3.8
1	A	392	SER	3.6
1	A	373	GLY	3.6
1	A	713	THR	3.5
1	A	503	GLU	3.5
1	B	677	VAL	3.5
1	A	321	THR	3.5
1	A	386	LYS	3.4
1	A	385	ASN	3.3

*Continued on next page...*

*Continued from previous page...*

<b>Mol</b>	<b>Chain</b>	<b>Res</b>	<b>Type</b>	<b>RSRZ</b>
1	A	486	LYS	3.3
1	A	382	GLU	3.3
1	B	567	VAL	3.2
1	A	677	VAL	3.2
1	A	552	ASP	3.2
1	B	566	ALA	3.2
1	B	620	LYS	3.2
1	A	676	TRP	3.2
1	B	479	LEU	3.1
1	A	514	ARG	3.1
1	B	680	VAL	3.0
1	B	564	LEU	3.0
1	B	718	GLY	2.9
1	A	490	GLY	2.9
1	B	353	GLN	2.9
1	A	300	PHE	2.9
1	A	370	LYS	2.8
1	B	323	GLU	2.8
1	A	678	TRP	2.8
1	B	442	ILE	2.8
1	B	616	LEU	2.7
1	A	299	ARG	2.7
1	B	615	ASP	2.6
1	B	480	ILE	2.6
1	B	355	PHE	2.6
1	A	371	ARG	2.6
1	A	479	LEU	2.6
1	A	554	PHE	2.6
1	B	336	VAL	2.6
1	A	469	LYS	2.6
1	A	619	ARG	2.6
1	A	506	ILE	2.6
1	B	588	TYR	2.5
1	A	356	PRO	2.5
1	A	567	VAL	2.5
1	A	487	GLN	2.5
1	B	679	ILE	2.5
1	B	678	TRP	2.5
1	A	350	THR	2.5
1	A	511	LYS	2.4
1	A	480	ILE	2.4
1	B	591	THR	2.4

*Continued on next page...*

*Continued from previous page...*

Mol	Chain	Res	Type	RSRZ
1	B	565	PRO	2.4
1	B	676	TRP	2.4
1	A	508	GLN	2.4
1	A	491	SER	2.4
1	A	389	GLU	2.4
1	A	318	LEU	2.4
1	B	349	ARG	2.4
1	A	717	LYS	2.4
1	A	485	TYR	2.3
1	A	680	VAL	2.3
1	B	415	CYS	2.3
1	B	562	TYR	2.3
1	A	442	ILE	2.3
1	B	389	GLU	2.3
1	A	711	TRP	2.3
1	B	351	LYS	2.3
1	B	446	VAL	2.3
1	A	388	ILE	2.3
1	B	443	CYS	2.2
1	B	416	VAL	2.2
1	A	712	ASN	2.2
1	B	706	TYR	2.1
1	A	682	PRO	2.1
1	B	691	PHE	2.1
1	A	493	LEU	2.1
1	B	568	SER	2.1
1	A	393	THR	2.1
1	B	338	PRO	2.1
1	A	691	PHE	2.0
1	A	319	LYS	2.0
1	A	489	ASP	2.0
1	A	685	GLY	2.0
1	B	584	PHE	2.0

## 6.2 Non-standard residues in protein, DNA, RNA chains [i](#)

There are no non-standard protein/DNA/RNA residues in this entry.

## 6.3 Carbohydrates [i](#)

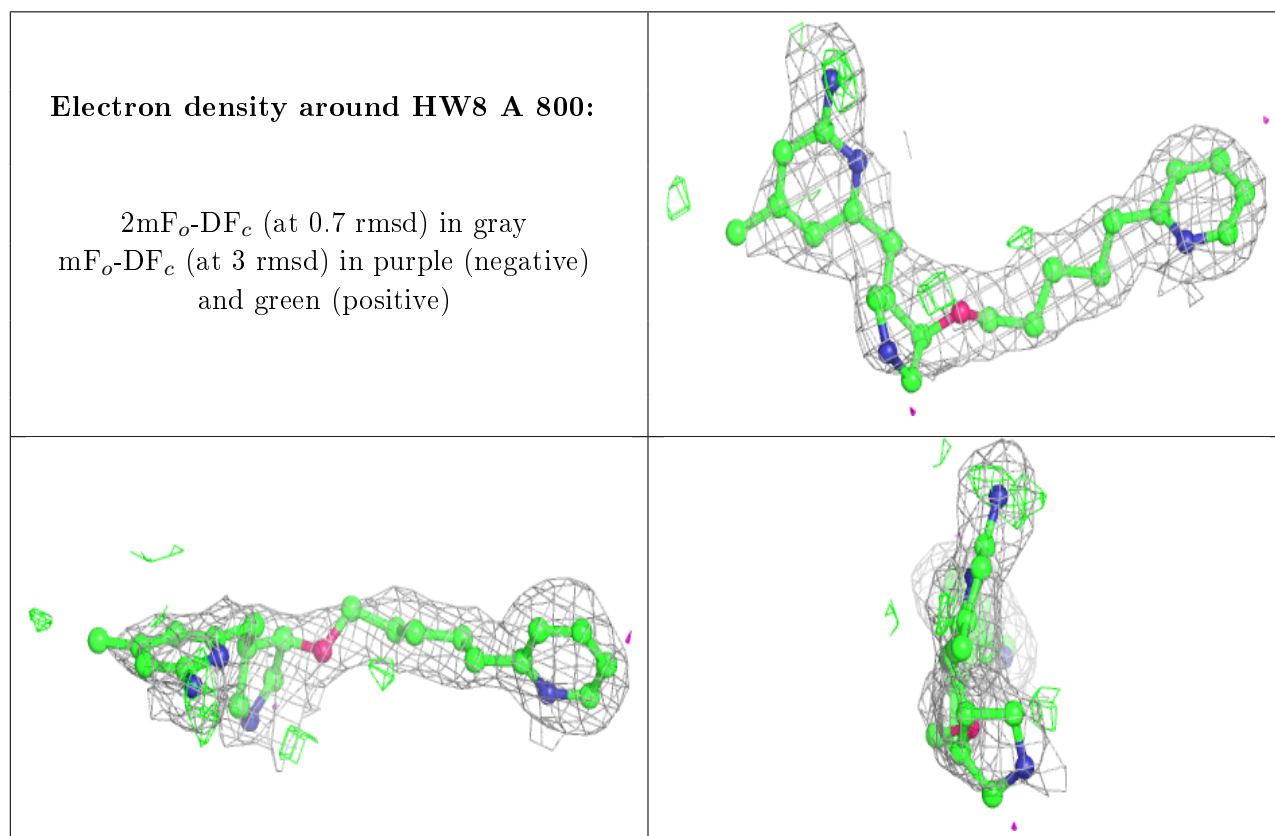
There are no carbohydrates in this entry.

## 6.4 Ligands [i](#)

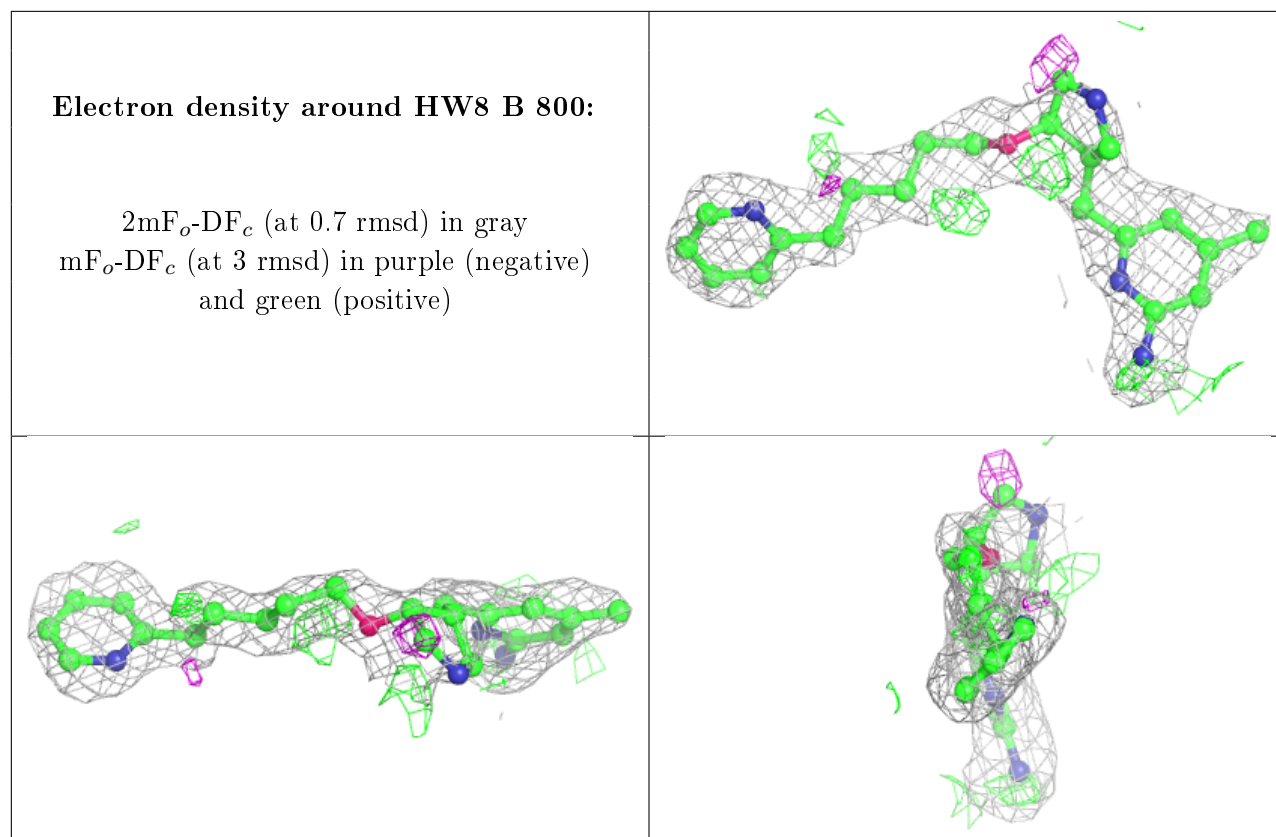
In the following table, the Atoms column lists the number of modelled atoms in the group and the number defined in the chemical component dictionary. The B-factors column lists the minimum, median, 95<sup>th</sup> percentile and maximum values of B factors of atoms in the group. The column labelled 'Q< 0.9' lists the number of atoms with occupancy less than 0.9.

Mol	Type	Chain	Res	Atoms	RSCC	RSR	B-factors(Å <sup>2</sup> )	Q<0.9
6	GOL	B	880	6/6	0.77	0.34	66,68,68,69	0
4	HW8	A	800	26/26	0.83	0.24	32,59,65,66	0
6	GOL	A	880	6/6	0.85	0.24	63,66,67,67	0
4	HW8	B	800	26/26	0.85	0.26	32,49,59,61	0
5	ACT	A	860	4/4	0.94	0.15	47,47,49,49	0
5	ACT	B	860	4/4	0.94	0.13	39,39,39,41	0
3	H4B	B	760	17/17	0.97	0.21	21,24,31,31	0
3	H4B	A	760	17/17	0.97	0.18	22,24,29,30	0
2	HEM	A	750	43/43	0.98	0.16	22,26,33,36	0
2	HEM	B	750	43/43	0.98	0.19	22,24,34,40	0
7	ZN	B	900	1/1	1.00	0.10	29,29,29,29	0

The following is a graphical depiction of the model fit to experimental electron density of all instances of the Ligand of Interest. In addition, ligands with molecular weight > 250 and outliers as shown on the geometry validation Tables will also be included. Each fit is shown from different orientation to approximate a three-dimensional view.

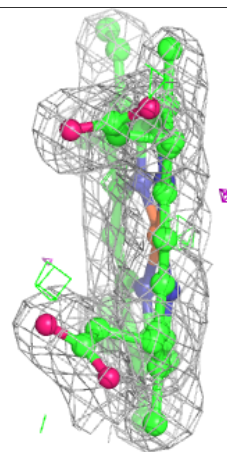
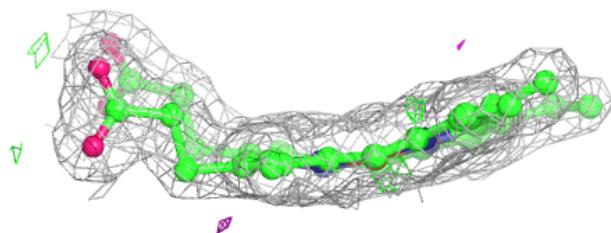
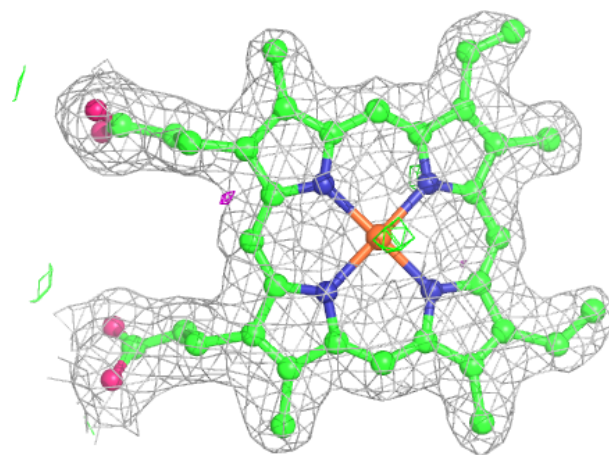


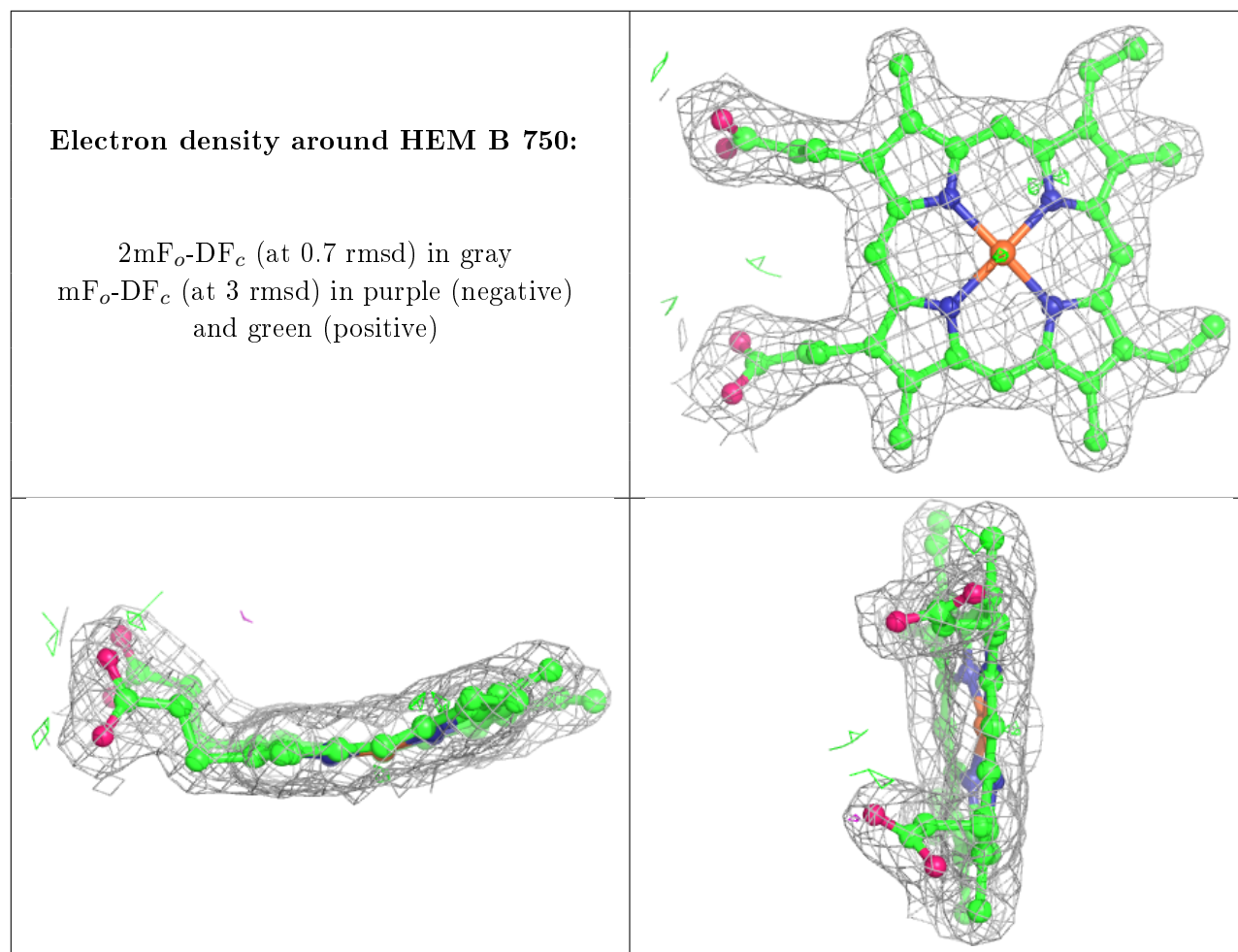




**Electron density around HEM A 750:**

$2mF_o-DF_c$  (at 0.7 rmsd) in gray  
 $mF_o-DF_c$  (at 3 rmsd) in purple (negative)  
and green (positive)





## 6.5 Other polymers [i](#)

There are no such residues in this entry.