



Full wwPDB X-ray Structure Validation Report ⓘ

May 16, 2020 – 05:11 am BST

PDB ID : 4CTU
Title : Structure of rat neuronal nitric oxide synthase heme domain in complex with 6-(3-Amino-2-(3-(2-(6-amino-4-methylpyridin-2-yl)ethyl) phenyl)propyl)-4-methylpyridin-2-amine
Authors : Li, H.; Poulos, T.L.
Deposited on : 2014-03-15
Resolution : 2.16 Å(reported)

This is a Full wwPDB X-ray Structure Validation Report for a publicly released PDB entry.

We welcome your comments at validation@mail.wwpdb.org

A user guide is available at

<https://www.wwpdb.org/validation/2017/XrayValidationReportHelp>

with specific help available everywhere you see the ⓘ symbol.

The following versions of software and data (see [references ⓘ](#)) were used in the production of this report:

MolProbity : 4.02b-467
Mogul : 1.8.5 (274361), CSD as541be (2020)
Xtriage (Phenix) : 1.13
EDS : 2.11
buster-report : 1.1.7 (2018)
Percentile statistics : 20191225.v01 (using entries in the PDB archive December 25th 2019)
Refmac : 5.8.0158
CCP4 : 7.0.044 (Gargrove)
Ideal geometry (proteins) : Engh & Huber (2001)
Ideal geometry (DNA, RNA) : Parkinson et al. (1996)
Validation Pipeline (wwPDB-VP) : 2.11

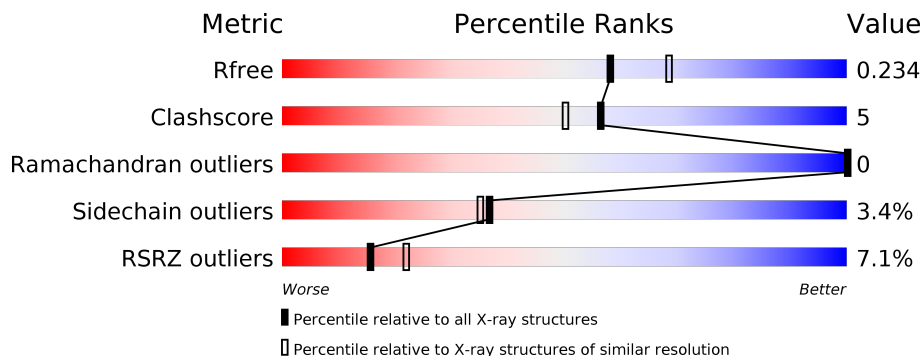
1 Overall quality at a glance

The following experimental techniques were used to determine the structure:

X-RAY DIFFRACTION

The reported resolution of this entry is 2.16 Å.

Percentile scores (ranging between 0-100) for global validation metrics of the entry are shown in the following graphic. The table shows the number of entries on which the scores are based.



Metric	Whole archive (#Entries)	Similar resolution (#Entries, resolution range(Å))
R_{free}	130704	1479 (2.16-2.16)
Clashscore	141614	1585 (2.16-2.16)
Ramachandran outliers	138981	1560 (2.16-2.16)
Sidechain outliers	138945	1559 (2.16-2.16)
RSRZ outliers	127900	1456 (2.16-2.16)

The table below summarises the geometric issues observed across the polymeric chains and their fit to the electron density. The red, orange, yellow and green segments on the lower bar indicate the fraction of residues that contain outliers for ≥ 3 , 2, 1 and 0 types of geometric quality criteria respectively. A grey segment represents the fraction of residues that are not modelled. The numeric value for each fraction is indicated below the corresponding segment, with a dot representing fractions $\leq 5\%$. The upper red bar (where present) indicates the fraction of residues that have poor fit to the electron density. The numeric value is given above the bar.

Mol	Chain	Length	Quality of chain
1	A	422	
1	B	422	

2 Entry composition i

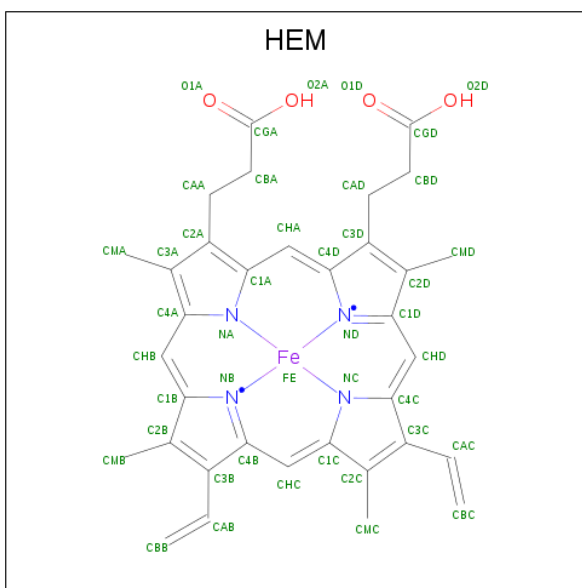
There are 7 unique types of molecules in this entry. The entry contains 7083 atoms, of which 0 are hydrogens and 0 are deuteriums.

In the tables below, the ZeroOcc column contains the number of atoms modelled with zero occupancy, the AltConf column contains the number of residues with at least one atom in alternate conformation and the Trace column contains the number of residues modelled with at most 2 atoms.

- Molecule 1 is a protein called NITRIC OXIDE SYNTHASE, BRAIN.

Mol	Chain	Residues	Atoms					ZeroOcc	AltConf	Trace
			Total	C	N	O	S			
1	A	408	Total 3320	C 2125	N 567	O 607	S 21	0	1	1
1	B	411	Total 3345	C 2140	N 574	O 610	S 21	0	0	0

- Molecule 2 is PROTOPORPHYRIN IX CONTAINING FE (three-letter code: HEM) (formula: $C_{34}H_{32}FeN_4O_4$).



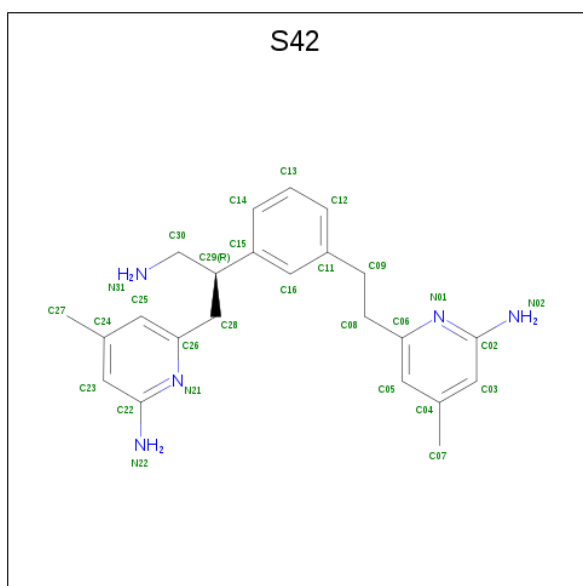
Mol	Chain	Residues	Atoms					ZeroOcc	AltConf
			Total	C	Fe	N	O		
2	A	1	Total 43	C 34	Fe 1	N 4	O 4	0	0
2	B	1	Total 43	C 34	Fe 1	N 4	O 4	0	0

- Molecule 3 is 5,6,7,8-TETRAHYDROBIOPTERIN (three-letter code: H4B) (formula: $C_9H_{15}N_5O_3$).



Mol	Chain	Residues	Atoms				ZeroOcc	AltConf
			Total	C	N	O		
3	A	1	17	9	5	3	0	0
3	B	1	17	9	5	3	0	0

- Molecule 4 is 6-[(2R)-3-amino-2-{3-[2-(6-amino-4-methylpyridin-2-yl)ethyl]phenyl}propyl]-4-methylpyridin-2-amine (three-letter code: S42) (formula: C₂₃H₂₉N₅).



Mol	Chain	Residues	Atoms				ZeroOcc	AltConf
			Total	C	N	O		
4	A	1	28	23	5	0	0	

Continued on next page...

Continued from previous page...

Mol	Chain	Residues	Atoms			ZeroOcc	AltConf
4	B	1	Total	C	N	0	0
			28	23	5		

- Molecule 5 is ACETATE ION (three-letter code: ACT) (formula: C₂H₃O₂).



Mol	Chain	Residues	Atoms			ZeroOcc	AltConf
5	A	1	Total	C	O	0	0
			4	2	2		
5	B	1	Total	C	O	0	0
			4	2	2		

- Molecule 6 is ZINC ION (three-letter code: ZN) (formula: Zn).

Mol	Chain	Residues	Atoms		ZeroOcc	AltConf
6	A	1	Total	Zn	0	0
			1	1		

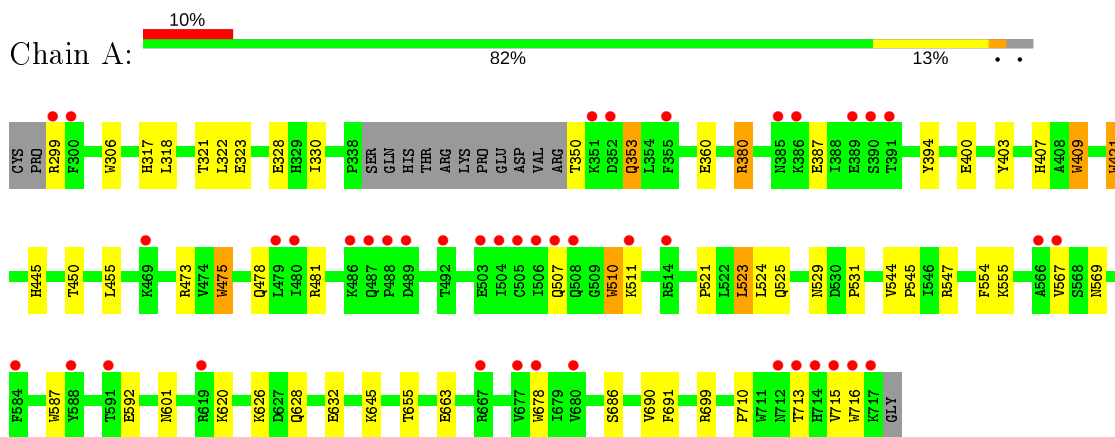
- Molecule 7 is water.

Mol	Chain	Residues	Atoms		ZeroOcc	AltConf
7	A	103	Total	O	0	0
			103	103		
7	B	130	Total	O	0	0
			130	130		

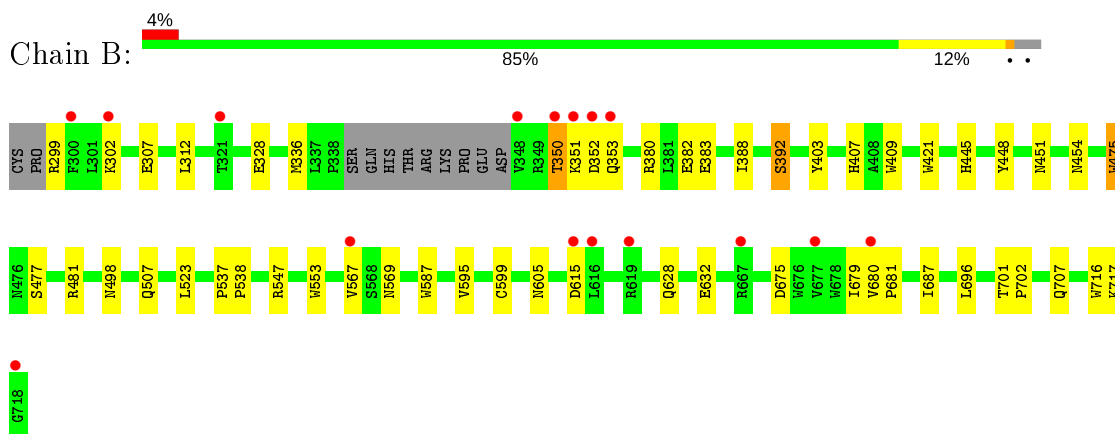
3 Residue-property plots [i](#)

These plots are drawn for all protein, RNA and DNA chains in the entry. The first graphic for a chain summarises the proportions of the various outlier classes displayed in the second graphic. The second graphic shows the sequence view annotated by issues in geometry and electron density. Residues are color-coded according to the number of geometric quality criteria for which they contain at least one outlier: green = 0, yellow = 1, orange = 2 and red = 3 or more. A red dot above a residue indicates a poor fit to the electron density ($RSRZ > 2$). Stretches of 2 or more consecutive residues without any outlier are shown as a green connector. Residues present in the sample, but not in the model, are shown in grey.

- Molecule 1: NITRIC OXIDE SYNTHASE, BRAIN



- Molecule 1: NITRIC OXIDE SYNTHASE, BRAIN



4 Data and refinement statistics

Property	Value	Source
Space group	P 21 21 21	Depositor
Cell constants a, b, c, α , β , γ	51.76Å 110.46Å 164.04Å 90.00° 90.00° 90.00°	Depositor
Resolution (Å)	92.19 – 2.16 40.69 – 2.16	Depositor EDS
% Data completeness (in resolution range)	97.2 (92.19-2.16) 97.0 (40.69-2.16)	Depositor EDS
R_{merge}	0.06	Depositor
R_{sym}	(Not available)	Depositor
$\langle I/\sigma(I) \rangle$ ¹	2.00 (at 2.16Å)	Xtriage
Refinement program	REFMAC 5.6.0117	Depositor
R, R_{free}	0.185 , 0.234 0.184 , 0.234	Depositor DCC
R_{free} test set	2502 reflections (4.99%)	wwPDB-VP
Wilson B-factor (Å ²)	38.5	Xtriage
Anisotropy	0.777	Xtriage
Bulk solvent k_{sol} (e/Å ³), B_{sol} (Å ²)	0.36 , 40.8	EDS
L-test for twinning ²	$\langle L \rangle = 0.49$, $\langle L^2 \rangle = 0.32$	Xtriage
Estimated twinning fraction	No twinning to report.	Xtriage
F_o, F_c correlation	0.96	EDS
Total number of atoms	7083	wwPDB-VP
Average B, all atoms (Å ²)	51.0	wwPDB-VP

Xtriage's analysis on translational NCS is as follows: *The largest off-origin peak in the Patterson function is 5.32% of the height of the origin peak. No significant pseudotranslation is detected.*

¹Intensities estimated from amplitudes.

²Theoretical values of $\langle |L| \rangle$, $\langle L^2 \rangle$ for acentric reflections are 0.5, 0.333 respectively for untwinned datasets, and 0.375, 0.2 for perfectly twinned datasets.

5 Model quality [i](#)

5.1 Standard geometry [i](#)

Bond lengths and bond angles in the following residue types are not validated in this section: HEM, ZN, H4B, S42, ACT

The Z score for a bond length (or angle) is the number of standard deviations the observed value is removed from the expected value. A bond length (or angle) with $|Z| > 5$ is considered an outlier worth inspection. RMSZ is the root-mean-square of all Z scores of the bond lengths (or angles).

Mol	Chain	Bond lengths		Bond angles	
		RMSZ	# Z >5	RMSZ	# Z >5
1	A	0.66	6/3416 (0.2%)	0.67	0/4635
1	B	0.67	4/3438 (0.1%)	0.67	0/4661
All	All	0.67	10/6854 (0.1%)	0.67	0/9296

All (10) bond length outliers are listed below:

Mol	Chain	Res	Type	Atoms	Z	Observed(Å)	Ideal(Å)
1	A	421	TRP	CD2-CE2	5.67	1.48	1.41
1	B	421	TRP	CD2-CE2	5.58	1.48	1.41
1	A	510	TRP	CD2-CE2	5.43	1.47	1.41
1	A	475	TRP	CD2-CE2	5.39	1.47	1.41
1	B	475	TRP	CD2-CE2	5.24	1.47	1.41
1	A	716	TRP	CD2-CE2	5.23	1.47	1.41
1	B	716	TRP	CD2-CE2	5.12	1.47	1.41
1	A	678	TRP	CD2-CE2	5.08	1.47	1.41
1	B	553	TRP	CD2-CE2	5.03	1.47	1.41
1	A	409	TRP	CD2-CE2	5.03	1.47	1.41

There are no bond angle outliers.

There are no chirality outliers.

There are no planarity outliers.

5.2 Too-close contacts [i](#)

In the following table, the Non-H and H(model) columns list the number of non-hydrogen atoms and hydrogen atoms in the chain respectively. The H(added) column lists the number of hydrogen atoms added and optimized by MolProbity. The Clashes column lists the number of clashes within the asymmetric unit, whereas Symm-Clashes lists symmetry related clashes.

Mol	Chain	Non-H	H(model)	H(added)	Clashes	Symm-Clashes
1	A	3320	0	3227	36	0
1	B	3345	0	3259	36	0
2	A	43	0	30	4	0
2	B	43	0	30	5	0
3	A	17	0	15	0	0
3	B	17	0	15	0	0
4	A	28	0	29	4	0
4	B	28	0	29	4	0
5	A	4	0	3	0	0
5	B	4	0	3	0	0
6	A	1	0	0	0	0
7	A	103	0	0	3	0
7	B	130	0	0	2	0
All	All	7083	0	6640	68	0

The all-atom clashscore is defined as the number of clashes found per 1000 atoms (including hydrogen atoms). The all-atom clashscore for this structure is 5.

All (68) close contacts within the same asymmetric unit are listed below, sorted by their clash magnitude.

Atom-1	Atom-2	Interatomic distance (Å)	Clash overlap (Å)
1:B:336:MET:HG2	4:B:800:S42:H27B	1.62	0.82
1:A:601:ASN:ND2	7:A:2080:HOH:O	2.18	0.76
1:A:523:LEU:HD22	1:A:531:PRO:HB2	1.70	0.71
1:B:587:TRP:H	2:B:750:HEM:HAB	1.55	0.70
2:A:750:HEM:HMC2	2:A:750:HEM:HBC2	1.75	0.67
1:A:380:ARG:HD3	1:A:400:GLU:OE2	1.94	0.67
1:A:587:TRP:H	2:A:750:HEM:HAB	1.61	0.64
1:A:475:TRP:HB2	1:A:523:LEU:HB3	1.82	0.60
1:A:299:ARG:HG3	1:A:318:LEU:HD21	1.84	0.59
1:A:306:TRP:CD1	1:B:336:MET:HE2	2.40	0.56
1:B:299:ARG:HB3	1:B:299:ARG:NH1	2.20	0.56
2:B:750:HEM:O2A	4:B:800:S42:N31	2.37	0.56
1:A:350:THR:N	1:A:353:GLN:NE2	2.54	0.56
1:B:299:ARG:CZ	1:B:299:ARG:HB3	2.37	0.55
1:B:595:VAL:O	1:B:599:CYS:HB2	2.08	0.54
2:A:750:HEM:CMC	2:A:750:HEM:HBC2	2.38	0.53
1:B:403:TYR:CE2	1:B:407:HIS:CE1	2.97	0.53
1:A:306:TRP:CD2	1:B:336:MET:HE3	2.45	0.52
1:B:675:ASP:O	1:B:679:ILE:HG12	2.11	0.51
7:A:2079:HOH:O	1:B:307:GLU:HG3	2.10	0.50
1:B:615:ASP:HA	7:B:2114:HOH:O	2.12	0.49

Continued on next page...

Continued from previous page...

Atom-1	Atom-2	Interatomic distance (Å)	Clash overlap (Å)
1:B:350:THR:HB	1:B:352:ASP:HB2	1.94	0.49
1:B:605:ASN:ND2	7:B:2111:HOH:O	2.45	0.49
1:A:387:GLU:OE2	1:A:394:TYR:HA	2.13	0.48
1:A:628:GLN:NE2	1:B:632:GLU:OE2	2.46	0.48
1:B:477:SER:HA	1:B:569:ASN:HB3	1.96	0.48
1:B:388:ILE:O	1:B:392:SER:N	2.46	0.47
1:A:592:GLU:OE1	4:A:800:S42:N01	2.48	0.47
2:B:750:HEM:C1C	4:B:800:S42:H07B	2.49	0.47
1:A:322:LEU:HB2	1:A:699:ARG:HE	1.81	0.46
1:A:306:TRP:CG	1:B:336:MET:HE2	2.50	0.46
1:A:478:GLN:HB2	1:A:481:ARG:HG3	1.96	0.46
1:A:455:LEU:HD12	1:A:587:TRP:HB3	1.98	0.46
1:A:299:ARG:O	1:A:317:HIS:CE1	2.69	0.46
1:A:632:GLU:OE2	1:B:628:GLN:NE2	2.49	0.46
1:A:409:TRP:CE3	1:A:421:TRP:HA	2.51	0.46
1:A:686:SER:HA	1:A:691:PHE:CG	2.50	0.46
1:A:330:ILE:HD11	1:B:696:LEU:HB3	1.98	0.45
1:B:388:ILE:O	1:B:392:SER:HA	2.16	0.45
1:A:525:GLN:HG3	1:A:529:ASN:O	2.16	0.45
1:B:701:THR:HA	1:B:702:PRO:C	2.37	0.45
1:A:567:VAL:CG2	4:A:800:S42:H09	2.48	0.44
1:B:481:ARG:NH1	1:B:498:ASN:OD1	2.51	0.44
1:A:403:TYR:CE2	1:A:407:HIS:CE1	3.07	0.43
1:A:473:ARG:NH2	1:A:710:PRO:HD3	2.34	0.43
1:A:323:GLU:HG2	1:B:328:GLU:HB3	2.00	0.43
1:B:448:TYR:CD1	1:B:448:TYR:C	2.92	0.43
1:A:510:TRP:CE2	1:A:521:PRO:HD3	2.53	0.42
1:B:302:LYS:HA	1:B:312:LEU:O	2.19	0.42
1:B:451:ASN:HB3	1:B:454:ASN:O	2.19	0.42
1:B:587:TRP:H	2:B:750:HEM:CAB	2.29	0.42
1:A:626:LYS:HB3	1:B:687:ILE:HD12	2.02	0.42
1:A:306:TRP:CE2	1:B:336:MET:HE3	2.55	0.42
1:B:567:VAL:CG2	4:B:800:S42:H09	2.49	0.42
1:A:445:HIS:C	1:A:445:HIS:CD2	2.93	0.42
1:A:450:THR:HA	1:A:455:LEU:HD22	2.01	0.42
1:B:680:VAL:HA	1:B:681:PRO:HD3	1.90	0.41
1:A:567:VAL:HG23	4:A:800:S42:H05	2.01	0.41
1:B:475:TRP:HB2	1:B:523:LEU:HB3	2.03	0.41
2:A:750:HEM:C1C	4:A:800:S42:H07B	2.55	0.41
1:B:537:PRO:HA	1:B:538:PRO:HD3	1.94	0.41
1:A:554:PHE:HB3	7:A:2064:HOH:O	2.19	0.41

Continued on next page...

Continued from previous page...

Atom-1	Atom-2	Interatomic distance (Å)	Clash overlap (Å)
1:B:445:HIS:C	1:B:445:HIS:CD2	2.94	0.41
1:A:655:THR:HB	1:A:690:VAL:HG13	2.03	0.40
1:B:409:TRP:CH2	2:B:750:HEM:HMC3	2.56	0.40
1:A:524:LEU:O	1:A:531:PRO:HA	2.21	0.40
1:A:544:VAL:HA	1:A:545:PRO:HD2	1.98	0.40
1:B:380:ARG:NH1	1:B:383:GLU:OE1	2.48	0.40

There are no symmetry-related clashes.

5.3 Torsion angles [i](#)

5.3.1 Protein backbone [i](#)

In the following table, the Percentiles column shows the percent Ramachandran outliers of the chain as a percentile score with respect to all X-ray entries followed by that with respect to entries of similar resolution.

The Analysed column shows the number of residues for which the backbone conformation was analysed, and the total number of residues.

Mol	Chain	Analysed	Favoured	Allowed	Outliers	Percentiles	
1	A	405/422 (96%)	393 (97%)	12 (3%)	0	100	100
1	B	407/422 (96%)	398 (98%)	9 (2%)	0	100	100
All	All	812/844 (96%)	791 (97%)	21 (3%)	0	100	100

There are no Ramachandran outliers to report.

5.3.2 Protein sidechains [i](#)

In the following table, the Percentiles column shows the percent sidechain outliers of the chain as a percentile score with respect to all X-ray entries followed by that with respect to entries of similar resolution.

The Analysed column shows the number of residues for which the sidechain conformation was analysed, and the total number of residues.

Mol	Chain	Analysed	Rotameric	Outliers	Percentiles	
1	A	364/377 (97%)	348 (96%)	16 (4%)	28	25
1	B	366/377 (97%)	357 (98%)	9 (2%)	47	49

Continued on next page...

Continued from previous page...

Mol	Chain	Analysed	Rotameric	Outliers	Percentiles
All	All	730/754 (97%)	705 (97%)	25 (3%)	37 35

All (25) residues with a non-rotameric sidechain are listed below:

Mol	Chain	Res	Type
1	A	321	THR
1	A	328	GLU
1	A	353	GLN
1	A	360	GLU
1	A	380	ARG
1	A	507	GLN
1	A	511	LYS
1	A	523	LEU
1	A	547	ARG
1	A	555	LYS
1	A	569	ASN
1	A	620	LYS
1	A	645	LYS
1	A	663	GLU
1	A	713	THR
1	A	715	VAL
1	B	350	THR
1	B	351	LYS
1	B	353	GLN
1	B	382	GLU
1	B	392	SER
1	B	507	GLN
1	B	547	ARG
1	B	707	GLN
1	B	717	LYS

Some sidechains can be flipped to improve hydrogen bonding and reduce clashes. All (15) such sidechains are listed below:

Mol	Chain	Res	Type
1	A	353	GLN
1	A	569	ASN
1	A	601	ASN
1	A	605	ASN
1	A	697	ASN
1	B	364	GLN
1	B	385	ASN

Continued on next page...

Continued from previous page...

Mol	Chain	Res	Type
1	B	454	ASN
1	B	507	GLN
1	B	508	GLN
1	B	535	GLN
1	B	601	ASN
1	B	605	ASN
1	B	642	GLN
1	B	697	ASN

5.3.3 RNA [i](#)

There are no RNA molecules in this entry.

5.4 Non-standard residues in protein, DNA, RNA chains [i](#)

There are no non-standard protein/DNA/RNA residues in this entry.

5.5 Carbohydrates [i](#)

There are no carbohydrates in this entry.

5.6 Ligand geometry [i](#)

Of 9 ligands modelled in this entry, 1 is monoatomic - leaving 8 for Mogul analysis.

In the following table, the Counts columns list the number of bonds (or angles) for which Mogul statistics could be retrieved, the number of bonds (or angles) that are observed in the model and the number of bonds (or angles) that are defined in the Chemical Component Dictionary. The Link column lists molecule types, if any, to which the group is linked. The Z score for a bond length (or angle) is the number of standard deviations the observed value is removed from the expected value. A bond length (or angle) with $|Z| > 2$ is considered an outlier worth inspection. RMSZ is the root-mean-square of all Z scores of the bond lengths (or angles).

Mol	Type	Chain	Res	Link	Bond lengths			Bond angles		
					Counts	RMSZ	$\# Z > 2$	Counts	RMSZ	$\# Z > 2$
4	S42	B	800	-	29,30,30	0.91	0	36,41,41	2.12	8 (22%)
5	ACT	B	860	-	1,3,3	1.82	0	0,3,3	0.00	-
3	H4B	A	760	-	16,18,18	0.72	0	11,26,26	2.95	6 (54%)
2	HEM	A	750	1	27,50,50	2.32	10 (37%)	17,82,82	3.74	9 (52%)
5	ACT	A	860	-	1,3,3	1.96	0	0,3,3	0.00	-

Mol	Type	Chain	Res	Link	Bond lengths			Bond angles		
					Counts	RMSZ	# Z > 2	Counts	RMSZ	# Z > 2
2	HEM	B	750	1	27,50,50	2.34	9 (33%)	17,82,82	3.74	9 (52%)
3	H4B	B	760	-	16,18,18	0.92	0	11,26,26	2.42	5 (45%)
4	S42	A	800	-	29,30,30	0.82	0	36,41,41	1.86	7 (19%)

In the following table, the Chirals column lists the number of chiral outliers, the number of chiral centers analysed, the number of these observed in the model and the number defined in the Chemical Component Dictionary. Similar counts are reported in the Torsion and Rings columns. '-' means no outliers of that kind were identified.

Mol	Type	Chain	Res	Link	Chirals	Torsions	Rings
4	S42	B	800	-	-	5/15/15/15	0/3/3/3
3	H4B	A	760	-	-	0/8/17/17	0/2/2/2
2	HEM	A	750	1	-	0/6/54/54	-
2	HEM	B	750	1	-	0/6/54/54	-
3	H4B	B	760	-	-	0/8/17/17	0/2/2/2
4	S42	A	800	-	-	5/15/15/15	0/3/3/3

All (19) bond length outliers are listed below:

Mol	Chain	Res	Type	Atoms	Z	Observed(Å)	Ideal(Å)
2	A	750	HEM	C3C-C2C	6.00	1.48	1.40
2	B	750	HEM	C3C-C2C	5.47	1.48	1.40
2	B	750	HEM	C4A-NA	5.40	1.47	1.36
2	A	750	HEM	C4A-NA	4.70	1.45	1.36
2	A	750	HEM	C1A-NA	4.20	1.44	1.36
2	B	750	HEM	C3B-C2B	4.10	1.46	1.40
2	B	750	HEM	C1A-NA	3.94	1.44	1.36
2	A	750	HEM	C1C-C2C	3.52	1.50	1.42
2	B	750	HEM	C2A-C3A	3.51	1.48	1.37
2	A	750	HEM	C3D-C2D	3.26	1.47	1.37
2	A	750	HEM	C2A-C3A	3.12	1.46	1.37
2	B	750	HEM	C3D-C2D	3.10	1.46	1.37
2	A	750	HEM	C3B-C2B	3.05	1.44	1.40
2	B	750	HEM	C1B-C2B	2.63	1.48	1.42
2	A	750	HEM	C1B-C2B	2.49	1.48	1.42
2	B	750	HEM	C4D-C3D	2.46	1.48	1.42
2	B	750	HEM	CAA-C2A	-2.07	1.49	1.52
2	A	750	HEM	C4B-CHC	2.07	1.46	1.41
2	A	750	HEM	C1D-CHD	2.03	1.46	1.41

All (44) bond angle outliers are listed below:

Mol	Chain	Res	Type	Atoms	Z	Observed(°)	Ideal(°)
2	A	750	HEM	C1D-C2D-C3D	-9.45	100.42	107.00
2	B	750	HEM	C1D-C2D-C3D	-8.57	101.04	107.00
2	B	750	HEM	CBA-CAA-C2A	-7.47	98.70	112.49
4	B	800	S42	C02-N01-C06	6.92	123.34	118.10
2	A	750	HEM	CBA-CAA-C2A	-6.65	100.23	112.49
4	A	800	S42	C22-N21-C26	6.00	122.65	118.10
4	B	800	S42	C22-N21-C26	5.35	122.16	118.10
2	B	750	HEM	C3B-C4B-NB	5.02	115.70	109.21
2	B	750	HEM	C4A-C3A-C2A	-4.85	103.62	107.00
3	A	760	H4B	C4-C4A-N5	4.84	123.18	119.12
4	A	800	S42	C02-N01-C06	4.78	121.72	118.10
2	A	750	HEM	C3B-C4B-NB	4.66	115.24	109.21
2	A	750	HEM	CAD-CBD-CGD	-4.55	105.04	112.67
3	B	760	H4B	C4-C4A-C8A	4.52	118.58	114.57
4	B	800	S42	C05-C06-N01	-4.44	118.20	122.90
2	B	750	HEM	CBD-CAD-C3D	-4.30	104.55	112.48
3	A	760	H4B	C4-N3-C2	3.95	122.20	115.93
2	A	750	HEM	C4A-C3A-C2A	-3.93	104.26	107.00
3	A	760	H4B	N3-C2-N1	-3.88	119.34	125.42
3	A	760	H4B	C4-C4A-C8A	3.66	117.82	114.57
2	B	750	HEM	CMB-C2B-C3B	3.64	131.49	124.68
2	A	750	HEM	CBD-CAD-C3D	-3.62	105.81	112.48
3	B	760	H4B	C4-C4A-N5	3.53	122.08	119.12
2	A	750	HEM	CMB-C2B-C3B	3.32	130.88	124.68
3	A	760	H4B	C2-N1-C8A	3.26	121.85	114.54
3	B	760	H4B	C4-N3-C2	3.20	121.01	115.93
2	A	750	HEM	CMC-C2C-C3C	3.11	130.49	124.68
4	B	800	S42	C24-C25-C26	-2.91	118.41	120.32
4	A	800	S42	C24-C25-C26	-2.85	118.45	120.32
2	B	750	HEM	CMD-C2D-C3D	2.82	130.25	124.94
3	A	760	H4B	N2-C2-N1	2.80	121.61	117.25
3	B	760	H4B	N3-C2-N1	-2.72	121.15	125.42
4	A	800	S42	C05-C06-N01	-2.63	120.11	122.90
4	B	800	S42	C14-C15-C16	2.62	121.78	118.76
4	A	800	S42	N22-C22-N21	2.60	120.59	116.49
2	A	750	HEM	CMD-C2D-C3D	2.54	129.74	124.94
2	B	750	HEM	CMC-C2C-C3C	2.51	129.37	124.68
4	B	800	S42	C13-C14-C15	-2.34	117.75	120.65
4	B	800	S42	N22-C22-N21	2.28	120.10	116.49
4	B	800	S42	C16-C15-C29	-2.28	116.32	120.73
3	B	760	H4B	C2-N1-C8A	2.25	119.58	114.54
4	A	800	S42	C14-C15-C16	2.22	121.32	118.76
2	B	750	HEM	CAA-CBA-CGA	-2.19	108.99	112.67

Continued on next page...

Continued from previous page...

Mol	Chain	Res	Type	Atoms	Z	Observed(°)	Ideal(°)
4	A	800	S42	C04-C05-C06	-2.12	118.93	120.32

There are no chirality outliers.

All (10) torsion outliers are listed below:

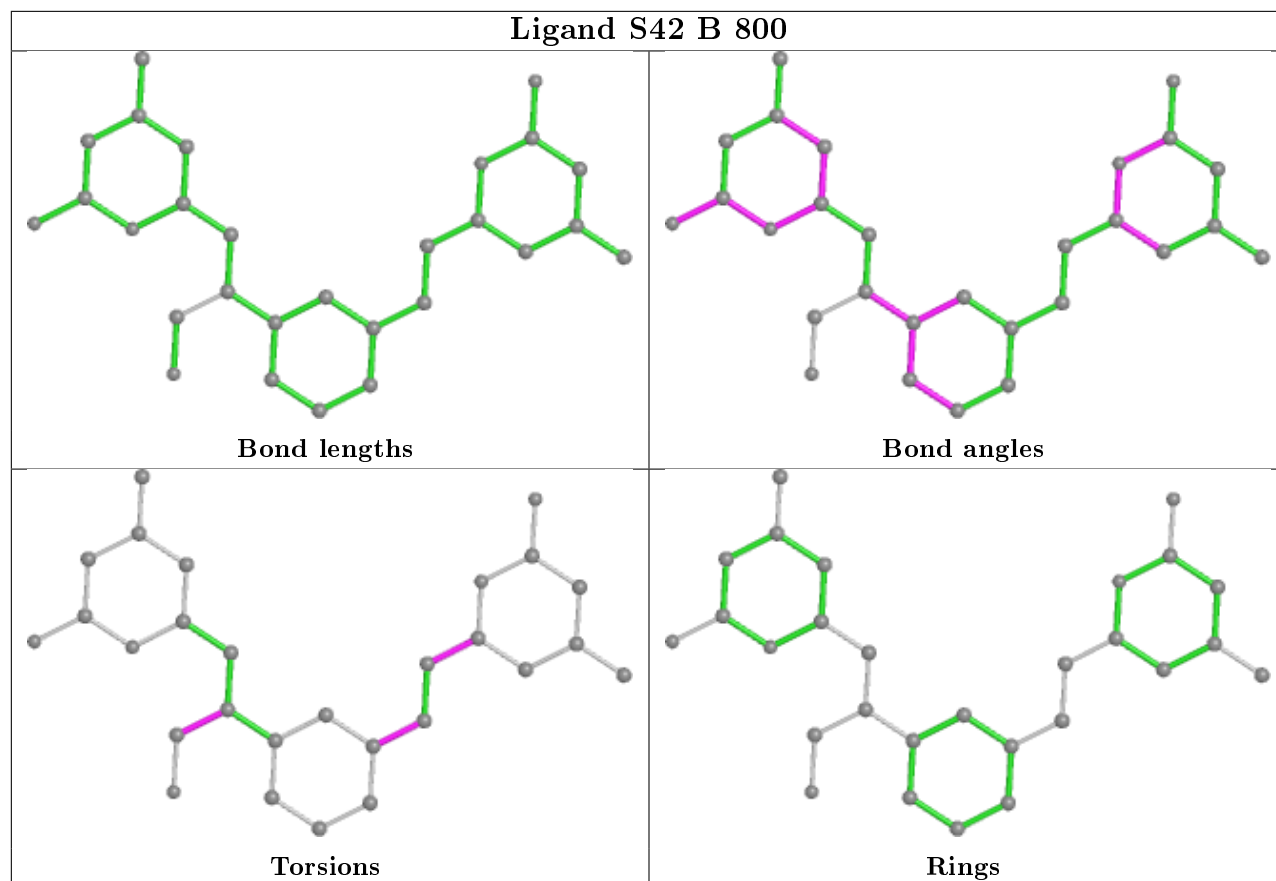
Mol	Chain	Res	Type	Atoms
4	A	800	S42	N01-C06-C08-C09
4	B	800	S42	C15-C29-C30-N31
4	A	800	S42	C05-C06-C08-C09
4	B	800	S42	C05-C06-C08-C09
4	B	800	S42	N01-C06-C08-C09
4	B	800	S42	C08-C09-C11-C12
4	A	800	S42	C15-C29-C30-N31
4	B	800	S42	C08-C09-C11-C16
4	A	800	S42	C08-C09-C11-C12
4	A	800	S42	C08-C09-C11-C16

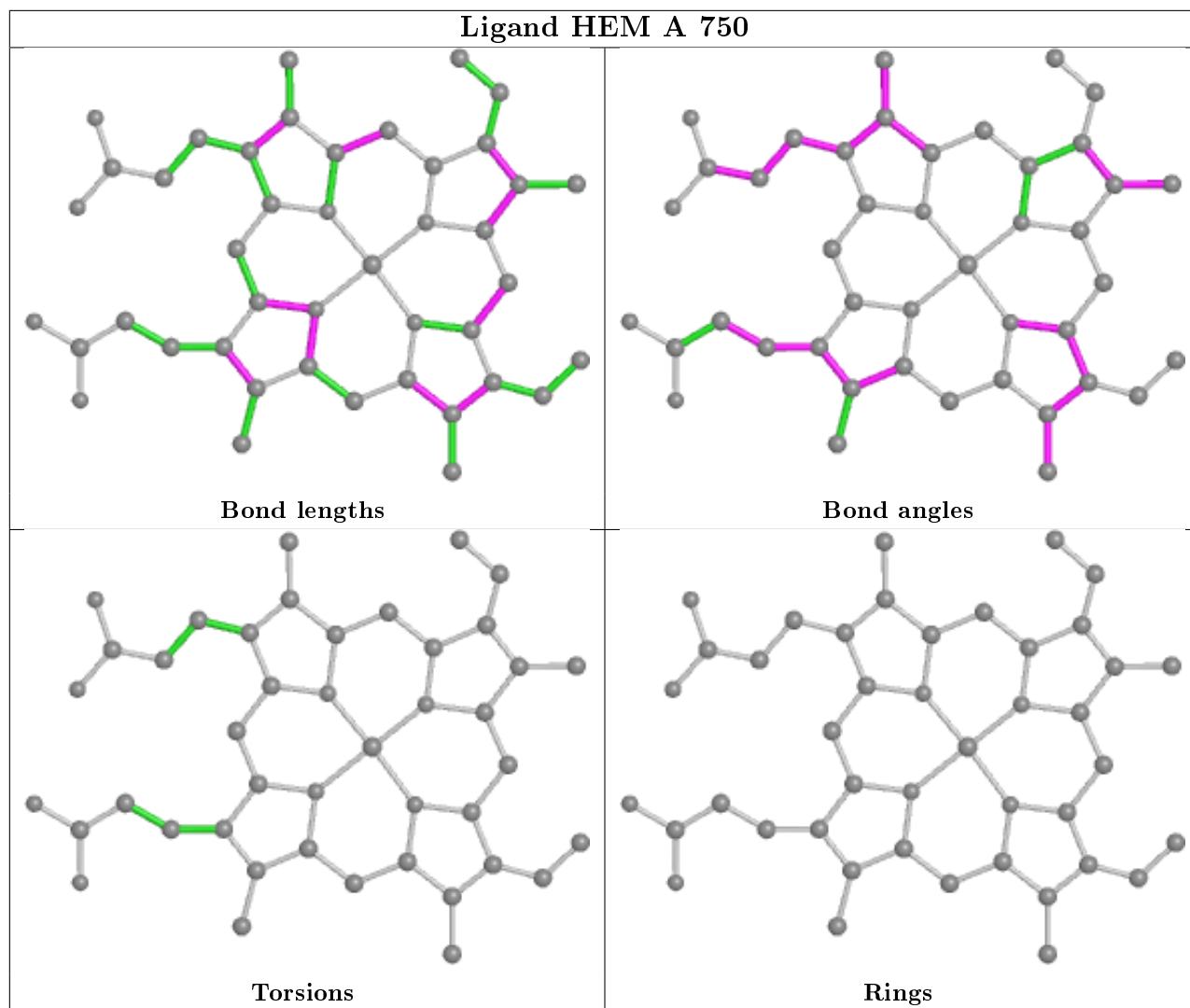
There are no ring outliers.

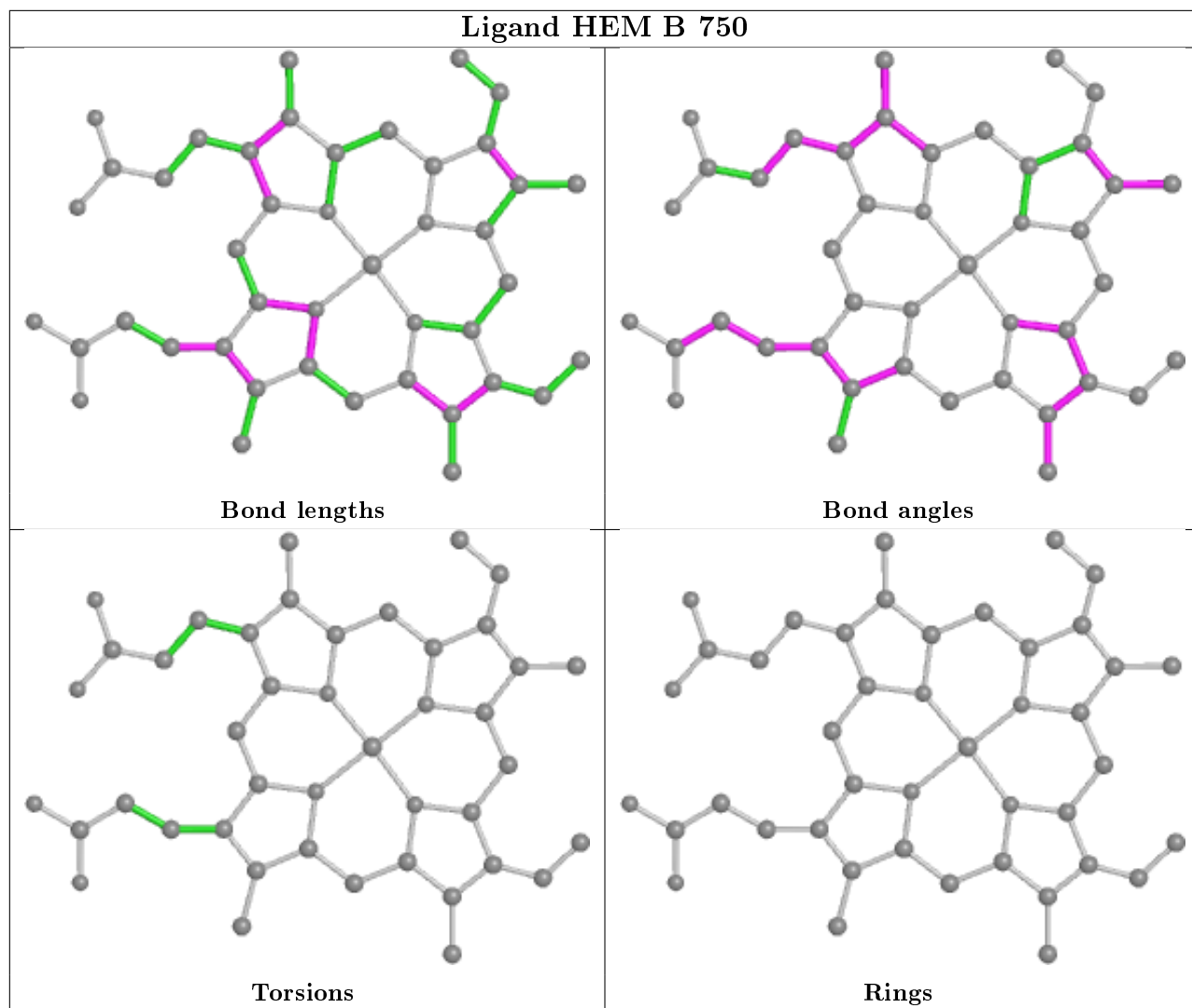
4 monomers are involved in 14 short contacts:

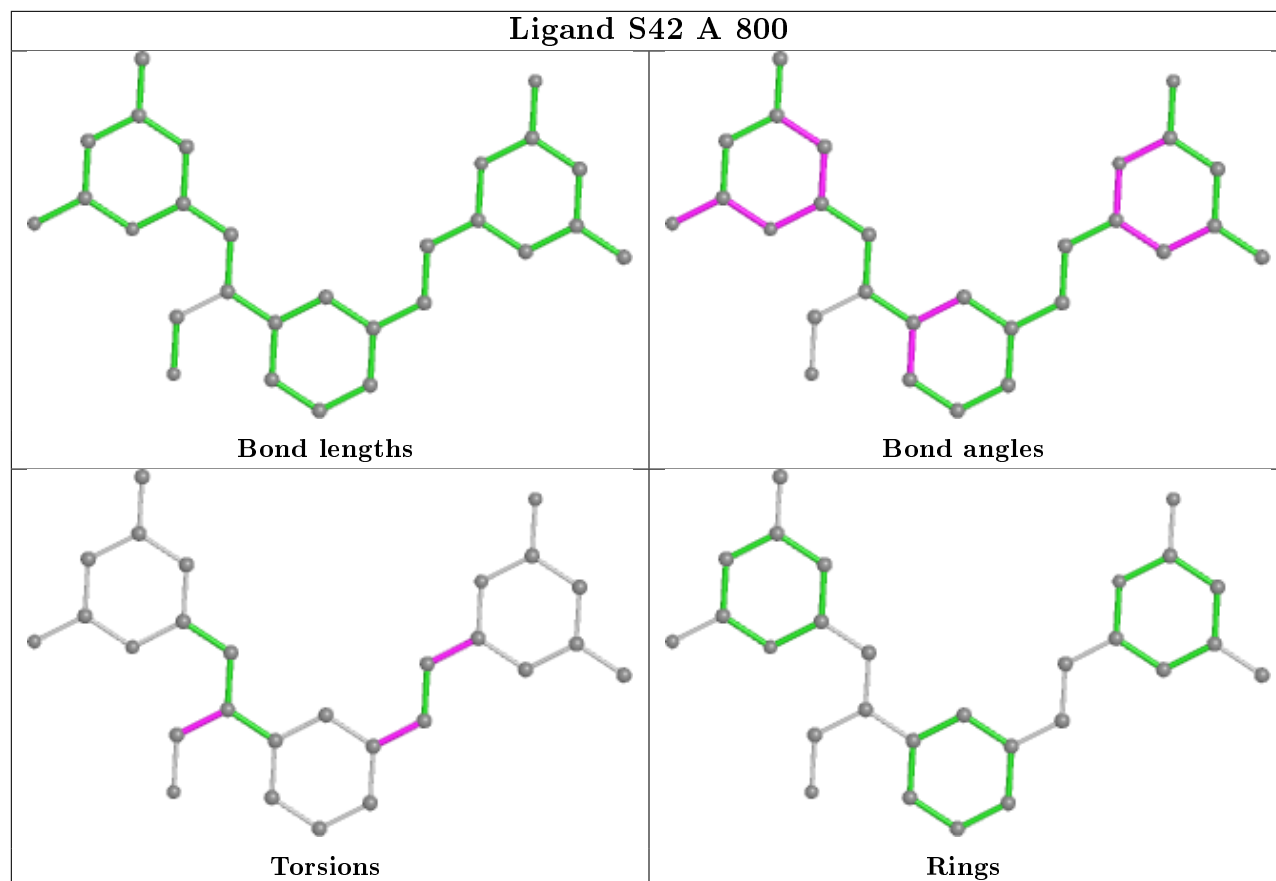
Mol	Chain	Res	Type	Clashes	Symm-Clashes
4	B	800	S42	4	0
2	A	750	HEM	4	0
2	B	750	HEM	5	0
4	A	800	S42	4	0

The following is a two-dimensional graphical depiction of Mogul quality analysis of bond lengths, bond angles, torsion angles, and ring geometry for all instances of the Ligand of Interest. In addition, ligands with molecular weight > 250 and outliers as shown on the validation Tables will also be included. For torsion angles, if less than 5% of the Mogul distribution of torsion angles is within 10 degrees of the torsion angle in question, then that torsion angle is considered an outlier. Any bond that is central to one or more torsion angles identified as an outlier by Mogul will be highlighted in the graph. For rings, the root-mean-square deviation (RMSD) between the ring in question and similar rings identified by Mogul is calculated over all ring torsion angles. If the average RMSD is greater than 60 degrees and the minimal RMSD between the ring in question and any Mogul-identified rings is also greater than 60 degrees, then that ring is considered an outlier. The outliers are highlighted in purple. The color gray indicates Mogul did not find sufficient equivalents in the CSD to analyse the geometry.









5.7 Other polymers [i](#)

There are no such residues in this entry.

5.8 Polymer linkage issues [i](#)

There are no chain breaks in this entry.

6 Fit of model and data

6.1 Protein, DNA and RNA chains

In the following table, the column labelled ‘#RSRZ> 2’ contains the number (and percentage) of RSRZ outliers, followed by percent RSRZ outliers for the chain as percentile scores relative to all X-ray entries and entries of similar resolution. The OWAB column contains the minimum, median, 95th percentile and maximum values of the occupancy-weighted average B-factor per residue. The column labelled ‘Q< 0.9’ lists the number of (and percentage) of residues with an average occupancy less than 0.9.

Mol	Chain	Analysed	<RSRZ>	#RSRZ>2	OWAB(Å ²)	Q<0.9
1	A	408/422 (96%)	0.57	42 (10%) 6 9	31, 54, 91, 116	0
1	B	411/422 (97%)	0.12	16 (3%) 39 48	30, 44, 73, 93	0
All	All	819/844 (97%)	0.35	58 (7%) 16 22	30, 48, 85, 116	0

All (58) RSRZ outliers are listed below:

Mol	Chain	Res	Type	RSRZ
1	A	488	PRO	7.1
1	A	715	VAL	6.8
1	B	300	PHE	6.4
1	A	716	TRP	5.4
1	B	348	VAL	4.9
1	B	350	THR	4.6
1	A	486	LYS	4.4
1	A	506	ILE	4.3
1	A	713	THR	4.0
1	A	355	PHE	3.9
1	A	507	GLN	3.7
1	A	300	PHE	3.5
1	A	511	LYS	3.4
1	A	299	ARG	3.3
1	A	352	ASP	3.2
1	A	588	TYR	3.2
1	B	718	GLY	3.2
1	A	567	VAL	3.2
1	A	712	ASN	3.1
1	A	469	LYS	3.0
1	A	678	TRP	3.0
1	A	503	GLU	3.0
1	B	321	THR	3.0
1	A	619	ARG	2.8

Continued on next page...

Continued from previous page...

Mol	Chain	Res	Type	RSRZ
1	A	480	ILE	2.8
1	A	717	LYS	2.8
1	A	714	HIS	2.8
1	B	352	ASP	2.7
1	A	479	LEU	2.7
1	A	489	ASP	2.7
1	A	667	ARG	2.7
1	A	492	THR	2.6
1	A	677	VAL	2.5
1	A	390	SER	2.5
1	A	566	ALA	2.5
1	A	391	THR	2.5
1	B	351	LYS	2.5
1	B	616	LEU	2.5
1	B	619	ARG	2.5
1	B	567	VAL	2.5
1	A	389	GLU	2.4
1	B	667	ARG	2.4
1	B	615	ASP	2.4
1	A	487	GLN	2.4
1	A	386	LYS	2.4
1	A	505	CYS	2.3
1	A	508	GLN	2.3
1	A	514	ARG	2.3
1	B	680	VAL	2.3
1	B	302	LYS	2.2
1	B	677	VAL	2.2
1	A	584	PHE	2.2
1	A	351	LYS	2.1
1	A	591	THR	2.1
1	A	680	VAL	2.1
1	B	353	GLN	2.1
1	A	385	ASN	2.0
1	A	504	ILE	2.0

6.2 Non-standard residues in protein, DNA, RNA chains

There are no non-standard protein/DNA/RNA residues in this entry.

6.3 Carbohydrates [i](#)

There are no carbohydrates in this entry.

6.4 Ligands [i](#)

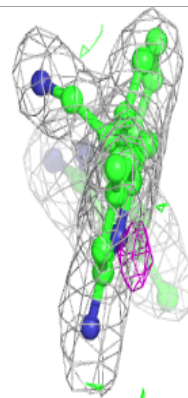
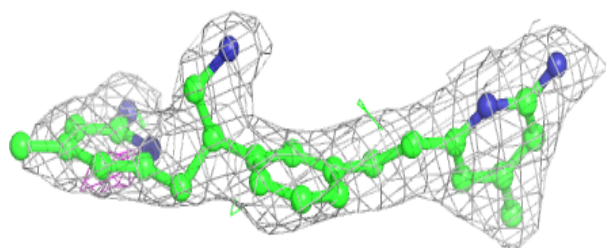
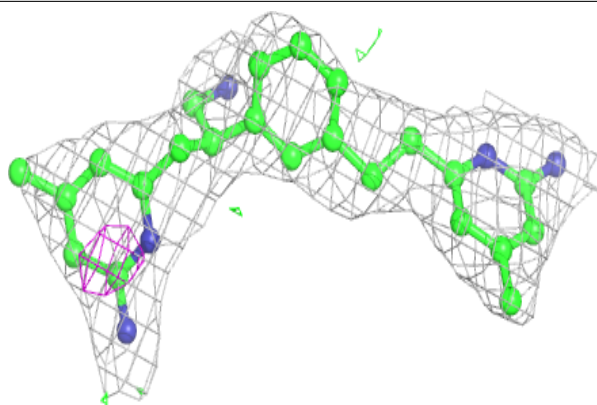
In the following table, the Atoms column lists the number of modelled atoms in the group and the number defined in the chemical component dictionary. The B-factors column lists the minimum, median, 95th percentile and maximum values of B factors of atoms in the group. The column labelled 'Q< 0.9' lists the number of atoms with occupancy less than 0.9.

Mol	Type	Chain	Res	Atoms	RSCC	RSR	B-factors(Å ²)	Q<0.9
4	S42	A	800	28/28	0.88	0.27	37,55,58,60	0
4	S42	B	800	28/28	0.93	0.20	34,48,51,54	0
3	H4B	A	760	17/17	0.95	0.20	34,37,38,42	0
3	H4B	B	760	17/17	0.95	0.18	33,35,41,44	0
5	ACT	B	860	4/4	0.95	0.14	51,51,53,54	0
5	ACT	A	860	4/4	0.96	0.17	65,70,71,73	0
2	HEM	A	750	43/43	0.97	0.20	32,37,47,52	0
2	HEM	B	750	43/43	0.98	0.18	31,35,47,57	0
6	ZN	A	900	1/1	0.99	0.08	45,45,45,45	0

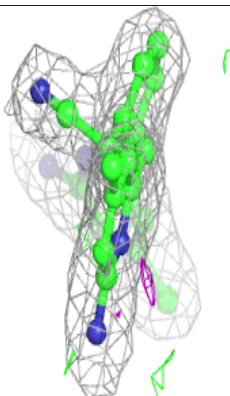
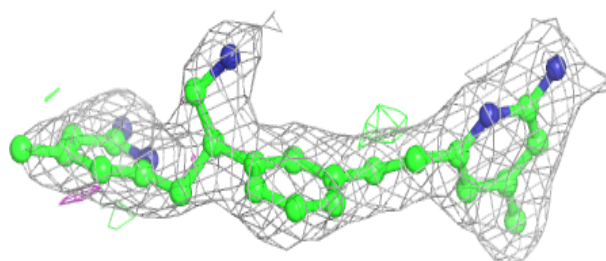
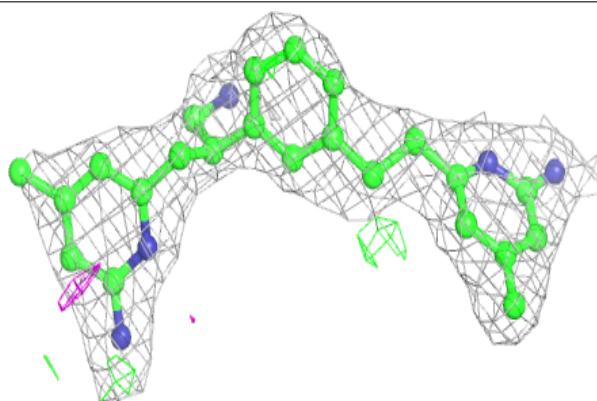
The following is a graphical depiction of the model fit to experimental electron density of all instances of the Ligand of Interest. In addition, ligands with molecular weight > 250 and outliers as shown on the geometry validation Tables will also be included. Each fit is shown from different orientation to approximate a three-dimensional view.

Electron density around S42 A 800:

$2mF_o-DF_c$ (at 0.7 rmsd) in gray
 mF_o-DF_c (at 3 rmsd) in purple (negative)
and green (positive)

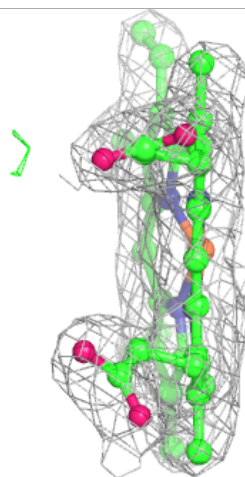
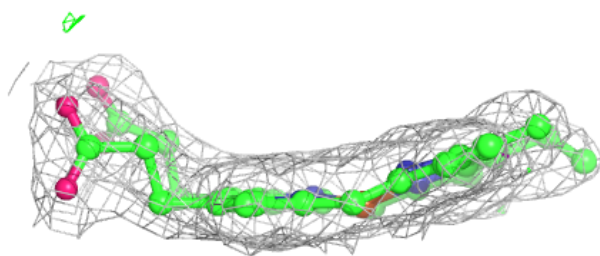
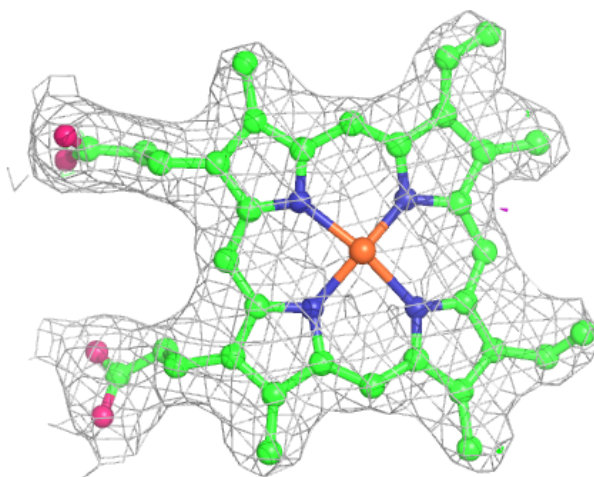
**Electron density around S42 B 800:**

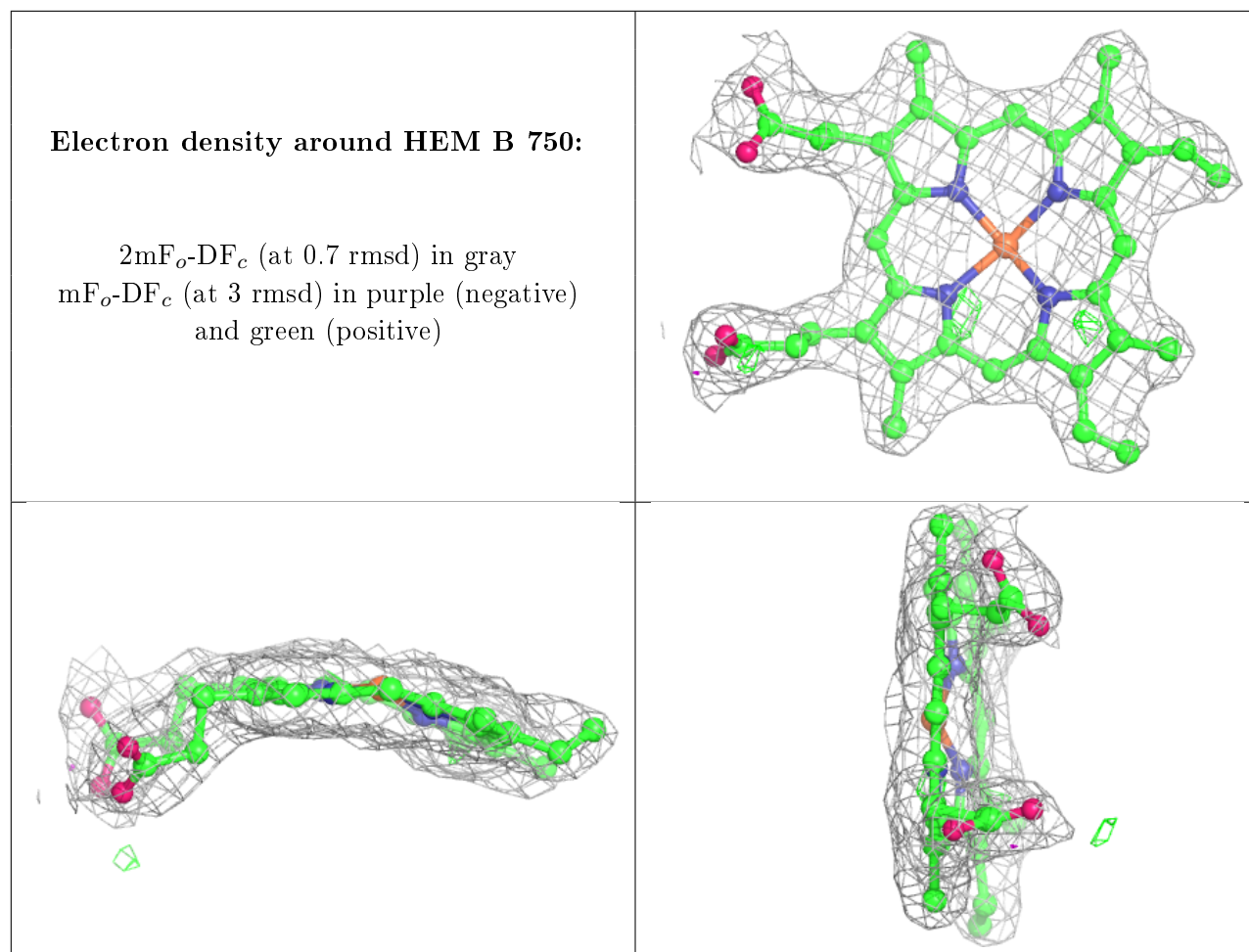
$2mF_o-DF_c$ (at 0.7 rmsd) in gray
 mF_o-DF_c (at 3 rmsd) in purple (negative)
and green (positive)



Electron density around HEM A 750:

$2mF_o-DF_c$ (at 0.7 rmsd) in gray
 mF_o-DF_c (at 3 rmsd) in purple (negative)
and green (positive)





6.5 Other polymers [i](#)

There are no such residues in this entry.