



# Full wwPDB X-ray Structure Validation Report ⓘ

Aug 2, 2023 – 08:16 AM EDT

PDB ID : 1CML  
Title : CHALCONE SYNTHASE FROM ALFALFA COMPLEXED WITH MALONYL-COA  
Authors : Ferrer, J.-L.; Jez, J.; Bowman, M.E.; Dixon, R.; Noel, J.P.  
Deposited on : 1999-03-30  
Resolution : 1.69 Å(reported)

This is a Full wwPDB X-ray Structure Validation Report for a publicly released PDB entry.

We welcome your comments at [validation@mail.wwpdb.org](mailto:validation@mail.wwpdb.org)

A user guide is available at

<https://www.wwpdb.org/validation/2017/XrayValidationReportHelp>

with specific help available everywhere you see the ⓘ symbol.

The types of validation reports are described at

<http://www.wwpdb.org/validation/2017/FAQs#types>.

---

The following versions of software and data (see [references ⓘ](#)) were used in the production of this report:

MolProbity : 4.02b-467  
Mogul : 1.8.5 (274361), CSD as541be (2020)  
Xtrriage (Phenix) : 1.13  
EDS : 2.34  
buster-report : 1.1.7 (2018)  
Percentile statistics : 20191225.v01 (using entries in the PDB archive December 25th 2019)  
Refmac : 5.8.0158  
CCP4 : 7.0.044 (Gargrove)  
Ideal geometry (proteins) : Engh & Huber (2001)  
Ideal geometry (DNA, RNA) : Parkinson et al. (1996)  
Validation Pipeline (wwPDB-VP) : 2.34

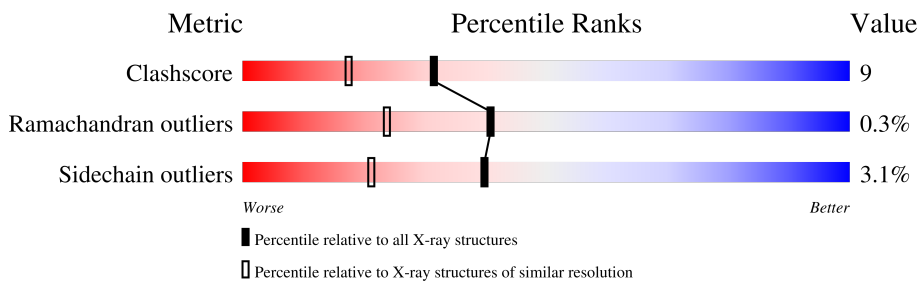
# 1 Overall quality at a glance

The following experimental techniques were used to determine the structure:

*X-RAY DIFFRACTION*

The reported resolution of this entry is 1.69 Å.

Percentile scores (ranging between 0-100) for global validation metrics of the entry are shown in the following graphic. The table shows the number of entries on which the scores are based.



Metric	Whole archive (#Entries)	Similar resolution (#Entries, resolution range(Å))
Clashscore	141614	4695 (1.70-1.70)
Ramachandran outliers	138981	4610 (1.70-1.70)
Sidechain outliers	138945	4610 (1.70-1.70)

The table below summarises the geometric issues observed across the polymeric chains and their fit to the electron density. The red, orange, yellow and green segments of the lower bar indicate the fraction of residues that contain outliers for  $\geq 3$ , 2, 1 and 0 types of geometric quality criteria respectively. A grey segment represents the fraction of residues that are not modelled. The numeric value for each fraction is indicated below the corresponding segment, with a dot representing fractions  $\leq 5\%$ .

Mol	Chain	Length	Quality of chain
1	A	389	85% 12% ..

The following table lists non-polymeric compounds, carbohydrate monomers and non-standard residues in protein, DNA, RNA chains that are outliers for geometric or electron-density-fit criteria:

Mol	Type	Chain	Res	Chirality	Geometry	Clashes	Electron density
4	PIN	A	391	-	-	X	-

## 2 Entry composition [i](#)

There are 5 unique types of molecules in this entry. The entry contains 3630 atoms, of which 0 are hydrogens and 0 are deuteriums.

In the tables below, the ZeroOcc column contains the number of atoms modelled with zero occupancy, the AltConf column contains the number of residues with at least one atom in alternate conformation and the Trace column contains the number of residues modelled with at most 2 atoms.

- Molecule 1 is a protein called PROTEIN (CHALCONE SYNTHASE).

Mol	Chain	Residues	Atoms					ZeroOcc	AltConf	Trace
			Total	C	N	O	S			
1	A	389	3154	2001	531	603	19	0	19	0

There is a discrepancy between the modelled and reference sequences:

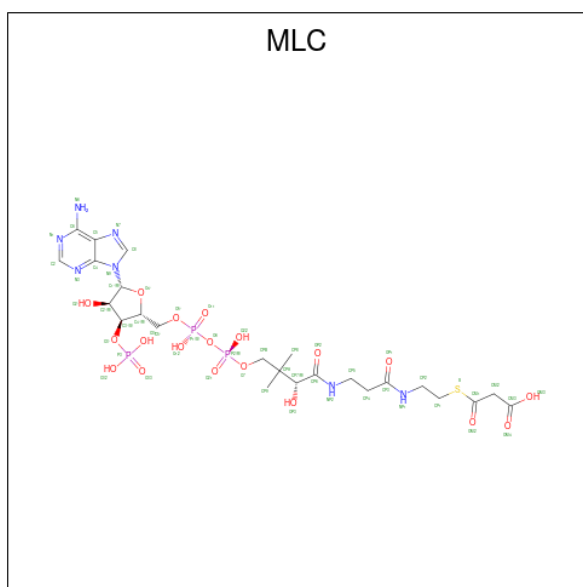
Chain	Residue	Modelled	Actual	Comment	Reference
A	164	ALA	CYS	engineered mutation	UNP P30074

- Molecule 2 is SULFATE ION (three-letter code: SO4) (formula: O<sub>4</sub>S).



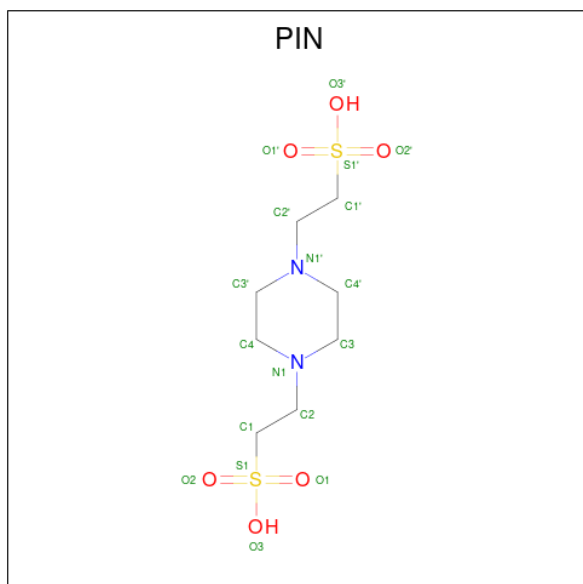
Mol	Chain	Residues	Atoms			ZeroOcc	AltConf
			Total	O	S		
2	A	1	5	4	1	0	0

- Molecule 3 is MALONYL-COENZYME A (three-letter code: MLC) (formula: C<sub>24</sub>H<sub>38</sub>N<sub>7</sub>O<sub>19</sub>P<sub>3</sub>S).



Mol	Chain	Residues	Atoms					ZeroOcc	AltConf	
			Total	C	N	O	P			S
3	A	1	54	24	7	19	3	1	3	0

- Molecule 4 is PIPERAZINE-N,N'-BIS(2-ETHANESULFONIC ACID) (three-letter code: PIN) (formula:  $C_8H_{18}N_2O_6S_2$ ).



Mol	Chain	Residues	Atoms					ZeroOcc	AltConf
			Total	C	N	O	S		
4	A	1	18	8	2	6	2	0	0

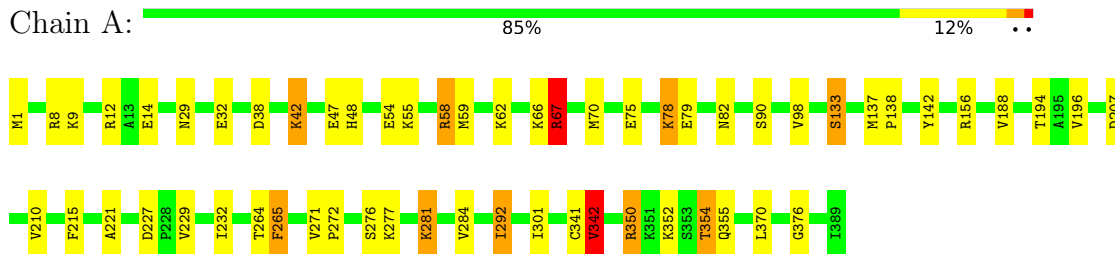
- Molecule 5 is water.

Mol	Chain	Residues	Atoms		ZeroOcc	AltConf
5	A	399	Total 399	O 399	0	0

### 3 Residue-property plots [i](#)

These plots are drawn for all protein, RNA, DNA and oligosaccharide chains in the entry. The first graphic for a chain summarises the proportions of the various outlier classes displayed in the second graphic. The second graphic shows the sequence view annotated by issues in geometry. Residues are color-coded according to the number of geometric quality criteria for which they contain at least one outlier: green = 0, yellow = 1, orange = 2 and red = 3 or more. Stretches of 2 or more consecutive residues without any outlier are shown as a green connector. Residues present in the sample, but not in the model, are shown in grey.

- Molecule 1: PROTEIN (CHALCONE SYNTHASE)



## 4 Data and refinement statistics

Property	Value	Source
Space group	P 32 2 1	Depositor
Cell constants a, b, c, $\alpha$ , $\beta$ , $\gamma$	97.77Å 97.77Å 65.23Å 90.00° 90.00° 120.00°	Depositor
Resolution (Å)	84.52 – 1.69 24.44 – 1.69	Depositor EDS
% Data completeness (in resolution range)	97.4 (84.52-1.69) 97.4 (24.44-1.69)	Depositor EDS
$R_{merge}$	(Not available)	Depositor
$R_{sym}$	0.03	Depositor
$\langle I/\sigma(I) \rangle$ <sup>1</sup>	6.42 (at 1.69Å)	Xtrriage
Refinement program	REFMAC	Depositor
R, $R_{free}$	0.167 , 0.200 0.275 , (Not available)	Depositor DCC
$R_{free}$ test set	No test flags present.	wwPDB-VP
Wilson B-factor (Å <sup>2</sup> )	15.5	Xtrriage
Anisotropy	0.087	Xtrriage
Bulk solvent $k_{sol}$ (e/Å <sup>3</sup> ), $B_{sol}$ (Å <sup>2</sup> )	0.37 , 61.3	EDS
L-test for twinning <sup>2</sup>	$\langle  L  \rangle = 0.49$ , $\langle L^2 \rangle = 0.33$	Xtrriage
Estimated twinning fraction	0.025 for -h,-k,l	Xtrriage
$F_o, F_c$ correlation	0.90	EDS
Total number of atoms	3630	wwPDB-VP
Average B, all atoms (Å <sup>2</sup> )	18.0	wwPDB-VP

Xtrriage's analysis on translational NCS is as follows: *The largest off-origin peak in the Patterson function is 5.14% of the height of the origin peak. No significant pseudotranslation is detected.*

<sup>1</sup>Intensities estimated from amplitudes.

<sup>2</sup>Theoretical values of  $\langle |L| \rangle$ ,  $\langle L^2 \rangle$  for acentric reflections are 0.5, 0.333 respectively for untwinned datasets, and 0.375, 0.2 for perfectly twinned datasets.

## 5 Model quality i

### 5.1 Standard geometry i

Bond lengths and bond angles in the following residue types are not validated in this section: PIN, MLC, SO4

The Z score for a bond length (or angle) is the number of standard deviations the observed value is removed from the expected value. A bond length (or angle) with  $|Z| > 5$  is considered an outlier worth inspection. RMSZ is the root-mean-square of all Z scores of the bond lengths (or angles).

Mol	Chain	Bond lengths		Bond angles	
		RMSZ	# Z  >5	RMSZ	# Z  >5
1	A	0.54	0/3213	1.17	18/4346 (0.4%)

Chiral center outliers are detected by calculating the chiral volume of a chiral center and verifying if the center is modelled as a planar moiety or with the opposite hand. A planarity outlier is detected by checking planarity of atoms in a peptide group, atoms in a mainchain group or atoms of a sidechain that are expected to be planar.

Mol	Chain	#Chirality outliers	#Planarity outliers
1	A	0	5

There are no bond length outliers.

All (18) bond angle outliers are listed below:

Mol	Chain	Res	Type	Atoms	Z	Observed(°)	Ideal(°)
1	A	67	ARG	CD-NE-CZ	15.21	144.90	123.60
1	A	67	ARG	NE-CZ-NH1	15.14	127.87	120.30
1	A	58	ARG	NE-CZ-NH2	-12.18	114.21	120.30
1	A	58	ARG	NE-CZ-NH1	10.06	125.33	120.30
1	A	376	GLY	O-C-N	-8.76	108.69	122.70
1	A	8	ARG	NE-CZ-NH2	-8.72	115.94	120.30
1	A	342	VAL	N-CA-CB	-8.43	92.95	111.50
1	A	207	ASP	CB-CG-OD1	8.38	125.84	118.30
1	A	156	ARG	NE-CZ-NH1	7.91	124.26	120.30
1	A	376	GLY	CA-C-N	7.63	134.00	117.20
1	A	342	VAL	CB-CA-C	7.31	125.29	111.40
1	A	137	MET	CG-SD-CE	-7.24	88.61	100.20
1	A	67	ARG	NE-CZ-NH2	-7.18	116.71	120.30
1	A	350	ARG	NE-CZ-NH2	-6.20	117.20	120.30
1	A	12	ARG	NE-CZ-NH2	-5.62	117.49	120.30
1	A	342	VAL	CG1-CB-CG2	5.41	119.56	110.90

*Continued on next page...*



Continued from previous page...

Mol	Chain	Res	Type	Atoms	Z	Observed(°)	Ideal(°)
1	A	142	TYR	CB-CG-CD1	-5.28	117.83	121.00
1	A	138	PRO	N-CA-CB	5.09	109.41	103.30

There are no chirality outliers.

All (5) planarity outliers are listed below:

Mol	Chain	Res	Type	Group
1	A	265[B]	PHE	Mainchain
1	A	276[B]	SER	Mainchain
1	A	32[B]	GLU	Mainchain
1	A	354[B]	THR	Mainchain
1	A	82[B]	ASN	Mainchain

## 5.2 Too-close contacts [i](#)

In the following table, the Non-H and H(model) columns list the number of non-hydrogen atoms and hydrogen atoms in the chain respectively. The H(added) column lists the number of hydrogen atoms added and optimized by MolProbity. The Clashes column lists the number of clashes within the asymmetric unit, whereas Symm-Clashes lists symmetry-related clashes.

Mol	Chain	Non-H	H(model)	H(added)	Clashes	Symm-Clashes
1	A	3154	0	3169	47	0
2	A	5	0	0	0	0
3	A	54	0	25	17	0
4	A	18	0	12	8	0
5	A	399	0	0	26	8
All	All	3630	0	3206	58	8

The all-atom clashscore is defined as the number of clashes found per 1000 atoms (including hydrogen atoms). The all-atom clashscore for this structure is 9.

All (58) close contacts within the same asymmetric unit are listed below, sorted by their clash magnitude.

Atom-1	Atom-2	Interatomic distance (Å)	Clash overlap (Å)
3:A:390:MLC:OP3	4:A:391:PIN:O2	1.54	1.23
3:A:390:MLC:NP2	4:A:391:PIN:H21	1.31	1.20
3:A:390:MLC:NP2	4:A:391:PIN:C2	2.25	0.97
1:A:196:VAL:HB	5:A:763:HOH:O	1.65	0.94
3:A:390:MLC:HP2	4:A:391:PIN:H21	1.31	0.90

Continued on next page...

*Continued from previous page...*

Atom-1	Atom-2	Interatomic distance (Å)	Clash overlap (Å)
3:A:390:MLC:HPB2	3:A:390:MLC:C5'	2.02	0.89
3:A:390:MLC:HPB2	3:A:390:MLC:H5'1	1.59	0.84
1:A:59:MET:HE2	3:A:390:MLC:H1'	1.63	0.80
3:A:390:MLC:NP2	4:A:391:PIN:O2	2.18	0.73
1:A:98:VAL:HG21	5:A:763:HOH:O	1.90	0.72
3:A:390:MLC:HPB2	3:A:390:MLC:H5'2	1.70	0.71
1:A:14[A]:GLU:HG3	1:A:227:ASP:OD1	1.91	0.70
1:A:38:ASP:O	1:A:42[B]:LYS:HD3	1.97	0.65
1:A:292:ILE:HG21	5:A:766:HOH:O	1.97	0.64
1:A:70:MET:HG2	5:A:753:HOH:O	1.98	0.63
1:A:59:MET:CE	3:A:390:MLC:H1'	2.28	0.63
3:A:390:MLC:H5'1	3:A:390:MLC:CPB	2.30	0.61
1:A:301:ILE:HG21	5:A:755:HOH:O	2.02	0.60
1:A:58:ARG:HD2	3:A:390:MLC:P3	2.41	0.59
1:A:342:VAL:HG22	5:A:755:HOH:O	2.04	0.57
1:A:58:ARG:HD2	3:A:390:MLC:O33	2.07	0.56
1:A:210[B]:VAL:HG11	4:A:391:PIN:H22	1.89	0.53
1:A:54:GLU:HB3	1:A:58:ARG:NH2	2.24	0.53
1:A:265[B]:PHE:HB3	5:A:522:HOH:O	2.10	0.52
3:A:390:MLC:HP2	4:A:391:PIN:C2	2.10	0.51
1:A:370:LEU:CD1	5:A:755:HOH:O	2.59	0.50
1:A:341:CYS:HB2	5:A:400:HOH:O	2.11	0.50
1:A:9[A]:LYS:HG3	5:A:614:HOH:O	2.11	0.50
1:A:301:ILE:CG2	5:A:755:HOH:O	2.56	0.49
1:A:48:HIS:HA	5:A:772:HOH:O	2.11	0.49
1:A:264[B]:THR:HG23	5:A:538:HOH:O	2.13	0.49
1:A:98:VAL:HG11	5:A:763:HOH:O	2.12	0.48
1:A:215[B]:PHE:HZ	3:A:390:MLC:CM2	2.26	0.48
1:A:194:THR:HA	5:A:770:HOH:O	2.13	0.47
1:A:9[A]:LYS:HG3	5:A:618:HOH:O	2.15	0.47
1:A:342:VAL:HB	5:A:400:HOH:O	2.14	0.47
1:A:66:LYS:HB3	1:A:67:ARG:HH11	1.80	0.47
1:A:215[B]:PHE:HD2	5:A:548:HOH:O	1.98	0.46
1:A:277:LYS:HE2	5:A:703:HOH:O	2.15	0.46
1:A:352:LYS:HA	1:A:352:LYS:HD2	1.75	0.45
1:A:75:GLU:O	1:A:78:LYS:HD2	2.17	0.45
1:A:133:SER:HB3	5:A:589:HOH:O	2.15	0.45
1:A:229:VAL:HG12	1:A:232:ILE:HD13	1.99	0.45
1:A:370:LEU:HG	5:A:755:HOH:O	2.17	0.44
3:A:390:MLC:HP41	4:A:391:PIN:H11	1.86	0.44
1:A:42[B]:LYS:HD2	1:A:47:GLU:OE2	2.18	0.44

*Continued on next page...*

Continued from previous page...

Atom-1	Atom-2	Interatomic distance (Å)	Clash overlap (Å)
1:A:55:LYS:HE2	5:A:727:HOH:O	2.18	0.44
1:A:370:LEU:HD11	5:A:755:HOH:O	2.18	0.44
1:A:78:LYS:HD3	1:A:79:GLU:HG3	2.01	0.43
1:A:188:VAL:O	1:A:221:ALA:HA	2.19	0.42
1:A:354[B]:THR:O	1:A:355:GLN:C	2.57	0.42
1:A:277:LYS:HB3	1:A:277:LYS:HE3	1.72	0.42
1:A:277:LYS:HG3	5:A:700:HOH:O	2.20	0.42
1:A:42[B]:LYS:HD2	5:A:765:HOH:O	2.20	0.41
1:A:271:VAL:HB	1:A:272:PRO:HD3	2.03	0.41
1:A:281:LYS:HB3	5:A:473:HOH:O	2.21	0.41
1:A:62:LYS:HB2	3:A:390:MLC:HPB1	2.02	0.41
1:A:29:ASN:HB3	1:A:70:MET:O	2.21	0.40

All (8) symmetry-related close contacts are listed below. The label for Atom-2 includes the symmetry operator and encoded unit-cell translations to be applied.

Atom-1	Atom-2	Interatomic distance (Å)	Clash overlap (Å)
5:A:536:HOH:O	5:A:760:HOH:O[4_557]	1.20	1.00
5:A:620:HOH:O	5:A:620:HOH:O[4_557]	1.70	0.50
5:A:669:HOH:O	5:A:767:HOH:O[4_556]	1.95	0.25
5:A:546:HOH:O	5:A:616:HOH:O[6_656]	2.03	0.17
5:A:618:HOH:O	5:A:619:HOH:O[4_557]	2.05	0.15
5:A:596:HOH:O	5:A:780:HOH:O[6_656]	2.09	0.11
5:A:563:HOH:O	5:A:761:HOH:O[3_565]	2.10	0.10
5:A:552:HOH:O	5:A:566:HOH:O[5_666]	2.14	0.06

## 5.3 Torsion angles [i](#)

### 5.3.1 Protein backbone [i](#)

In the following table, the Percentiles column shows the percent Ramachandran outliers of the chain as a percentile score with respect to all X-ray entries followed by that with respect to entries of similar resolution.

The Analysed column shows the number of residues for which the backbone conformation was analysed, and the total number of residues.

Mol	Chain	Analysed	Favoured	Allowed	Outliers	Percentiles
1	A	406/389 (104%)	393 (97%)	12 (3%)	1 (0%)	47 30

All (1) Ramachandran outliers are listed below:

Mol	Chain	Res	Type
1	A	90	SER

### 5.3.2 Protein sidechains [i](#)

In the following table, the Percentiles column shows the percent sidechain outliers of the chain as a percentile score with respect to all X-ray entries followed by that with respect to entries of similar resolution.

The Analysed column shows the number of residues for which the sidechain conformation was analysed, and the total number of residues.

Mol	Chain	Analysed	Rotameric	Outliers	Percentiles
1	A	343/324 (106%)	332 (97%)	11 (3%)	39 20

All (11) residues with a non-rotameric sidechain are listed below:

Mol	Chain	Res	Type
1	A	1	MET
1	A	42[A]	LYS
1	A	42[B]	LYS
1	A	67	ARG
1	A	78	LYS
1	A	133	SER
1	A	281	LYS
1	A	284	VAL
1	A	292	ILE
1	A	342	VAL
1	A	350	ARG

Sometimes sidechains can be flipped to improve hydrogen bonding and reduce clashes. There are no such sidechains identified.

### 5.3.3 RNA [i](#)

There are no RNA molecules in this entry.

## 5.4 Non-standard residues in protein, DNA, RNA chains [i](#)

There are no non-standard protein/DNA/RNA residues in this entry.

## 5.5 Carbohydrates [i](#)

There are no monosaccharides in this entry.

## 5.6 Ligand geometry [i](#)

3 ligands are modelled in this entry.

In the following table, the Counts columns list the number of bonds (or angles) for which Mogul statistics could be retrieved, the number of bonds (or angles) that are observed in the model and the number of bonds (or angles) that are defined in the Chemical Component Dictionary. The Link column lists molecule types, if any, to which the group is linked. The Z score for a bond length (or angle) is the number of standard deviations the observed value is removed from the expected value. A bond length (or angle) with  $|Z| > 2$  is considered an outlier worth inspection. RMSZ is the root-mean-square of all Z scores of the bond lengths (or angles).

Mol	Type	Chain	Res	Link	Bond lengths			Bond angles		
					Counts	RMSZ	# Z  > 2	Counts	RMSZ	# Z  > 2
3	MLC	A	390	-	47,56,56	2.93	9 (19%)	60,83,83	2.74	18 (30%)
2	SO4	A	392	-	4,4,4	0.74	0	6,6,6	0.23	0
4	PIN	A	391	-	18,18,18	2.55	6 (33%)	22,26,26	2.69	7 (31%)

In the following table, the Chirals column lists the number of chiral outliers, the number of chiral centers analysed, the number of these observed in the model and the number defined in the Chemical Component Dictionary. Similar counts are reported in the Torsion and Rings columns. '–' means no outliers of that kind were identified.

Mol	Type	Chain	Res	Link	Chirals	Torsions	Rings
3	MLC	A	390	-	-	20/50/71/71	0/3/3/3
4	PIN	A	391	-	-	7/12/22/22	0/1/1/1

All (15) bond length outliers are listed below:

Mol	Chain	Res	Type	Atoms	Z	Observed(Å)	Ideal(Å)
3	A	390	MLC	CM2-CM3	-17.23	1.24	1.51
4	A	391	PIN	C1-S1	-5.97	1.69	1.77
4	A	391	PIN	O3-S1	5.06	1.65	1.47
4	A	391	PIN	C1'-S1'	-4.88	1.70	1.77
3	A	390	MLC	CP2-NP1	3.91	1.55	1.46
3	A	390	MLC	OM4-CM3	3.68	1.34	1.22
4	A	391	PIN	O3'-S1'	3.61	1.60	1.47
3	A	390	MLC	P2-O7	-3.20	1.46	1.59
3	A	390	MLC	CP5-NP2	3.09	1.53	1.46

*Continued on next page...*

Continued from previous page...

Mol	Chain	Res	Type	Atoms	Z	Observed(Å)	Ideal(Å)
3	A	390	MLC	OM2-CM1	3.05	1.26	1.21
3	A	390	MLC	OM3-CM3	-2.84	1.21	1.30
3	A	390	MLC	P3-O33	2.65	1.59	1.50
3	A	390	MLC	CM1-S	2.51	1.82	1.76
4	A	391	PIN	O1-S1	-2.24	1.38	1.45
4	A	391	PIN	O1'-S1'	-2.14	1.38	1.45

All (25) bond angle outliers are listed below:

Mol	Chain	Res	Type	Atoms	Z	Observed(°)	Ideal(°)
3	A	390	MLC	P2-O6-P1	7.92	160.00	132.83
3	A	390	MLC	CP2-NP1-CP3	-7.29	109.31	122.84
4	A	391	PIN	O1'-S1'-C1'	6.60	114.86	106.92
3	A	390	MLC	OP1-CP3-NP1	-6.54	110.66	123.01
4	A	391	PIN	O2-S1-C1	6.40	114.62	106.92
3	A	390	MLC	CP5-NP2-CP6	-6.14	111.64	122.59
3	A	390	MLC	CP9-CPA-CP7	5.01	117.50	108.82
3	A	390	MLC	CP1-S-CM1	4.50	115.89	101.87
3	A	390	MLC	OM4-CM3-CM2	-4.50	108.93	122.08
3	A	390	MLC	CM2-CM1-S	4.29	119.03	113.69
3	A	390	MLC	OM2-CM1-S	-4.27	117.06	122.61
3	A	390	MLC	O4'-C1'-C2'	4.23	113.10	106.93
3	A	390	MLC	O4'-C4'-C3'	3.78	112.96	104.87
4	A	391	PIN	O3'-S1'-C1'	-3.72	99.75	105.77
3	A	390	MLC	C2'-C3'-C4'	-3.65	96.76	103.22
3	A	390	MLC	OM3-CM3-CM2	3.54	125.84	114.54
4	A	391	PIN	O3-S1-C1	-3.51	100.09	105.77
4	A	391	PIN	O3-S1-O2	-3.47	102.78	111.27
3	A	390	MLC	C5-C6-N6	3.41	125.53	120.35
3	A	390	MLC	CP4-CP3-NP1	3.03	121.52	116.42
4	A	391	PIN	O1-S1-C1	2.90	110.41	106.92
3	A	390	MLC	OP3-CP7-CP6	-2.43	97.72	109.42
4	A	391	PIN	O3-S1-O1	-2.27	105.73	111.27
3	A	390	MLC	CP5-CP4-CP3	-2.24	108.62	112.36
3	A	390	MLC	C5-C6-N1	-2.02	115.77	120.35

There are no chirality outliers.

All (27) torsion outliers are listed below:

Mol	Chain	Res	Type	Atoms
3	A	390	MLC	CPB-O7-P2-O6
3	A	390	MLC	CPB-O7-P2-O22

Continued on next page...

*Continued from previous page...*

Mol	Chain	Res	Type	Atoms
3	A	390	MLC	CP7-CPA-CPB-O7
3	A	390	MLC	CP9-CPA-CPB-O7
3	A	390	MLC	CP8-CPA-CPB-O7
3	A	390	MLC	CM2-CM1-S-CP1
3	A	390	MLC	OM2-CM1-S-CP1
4	A	391	PIN	S1-C1-C2-N1
4	A	391	PIN	C2-C1-S1-O1
4	A	391	PIN	C1-C2-N1-C3
4	A	391	PIN	C1'-C2'-N1'-C3'
3	A	390	MLC	OP1-CP3-NP1-CP2
3	A	390	MLC	O4'-C4'-C5'-O5'
3	A	390	MLC	C2'-C3'-O3'-P3
3	A	390	MLC	C4'-C3'-O3'-P3
3	A	390	MLC	CP3-CP4-CP5-NP2
3	A	390	MLC	OP1-CP3-CP4-CP5
4	A	391	PIN	C2-C1-S1-O3
3	A	390	MLC	C3'-C4'-C5'-O5'
3	A	390	MLC	CP4-CP3-NP1-CP2
4	A	391	PIN	C2-C1-S1-O2
3	A	390	MLC	OP2-CP6-NP2-CP5
4	A	391	PIN	C1'-C2'-N1'-C4'
3	A	390	MLC	CP2-CP1-S-CM1
3	A	390	MLC	P2-O6-P1-O12
3	A	390	MLC	C5'-O5'-P1-O11
3	A	390	MLC	CPB-O7-P2-O21

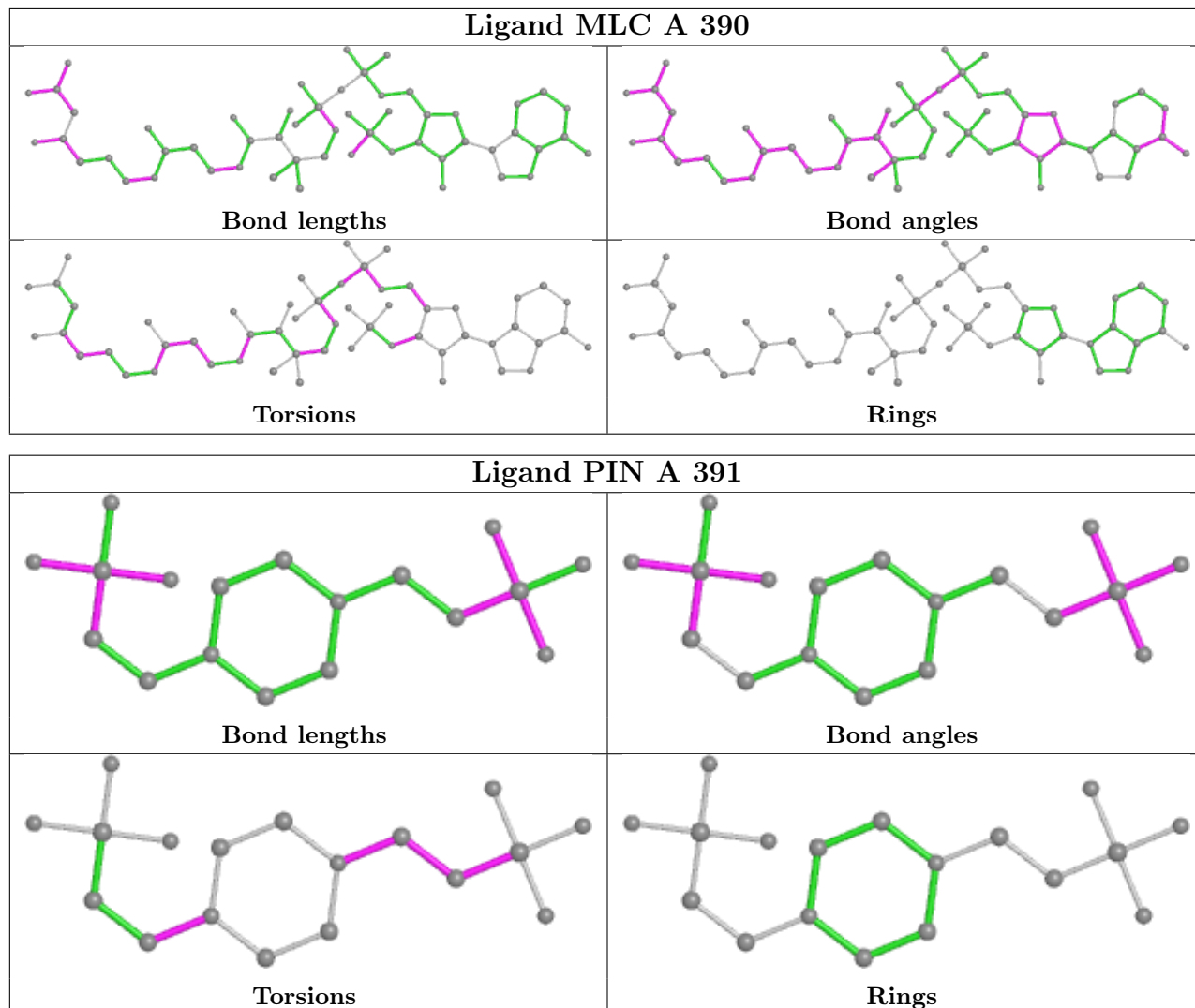
There are no ring outliers.

2 monomers are involved in 18 short contacts:

Mol	Chain	Res	Type	Clashes	Symm-Clashes
3	A	390	MLC	17	0
4	A	391	PIN	8	0

The following is a two-dimensional graphical depiction of Mogul quality analysis of bond lengths, bond angles, torsion angles, and ring geometry for all instances of the Ligand of Interest. In addition, ligands with molecular weight > 250 and outliers as shown on the validation Tables will also be included. For torsion angles, if less than 5% of the Mogul distribution of torsion angles is within 10 degrees of the torsion angle in question, then that torsion angle is considered an outlier. Any bond that is central to one or more torsion angles identified as an outlier by Mogul will be highlighted in the graph. For rings, the root-mean-square deviation (RMSD) between the ring in question and similar rings identified by Mogul is calculated over all ring torsion angles. If the average RMSD is greater than 60 degrees and the minimal RMSD between the ring in question and

any Mogul-identified rings is also greater than 60 degrees, then that ring is considered an outlier. The outliers are highlighted in purple. The color gray indicates Mogul did not find sufficient equivalents in the CSD to analyse the geometry.



## 5.7 Other polymers [i](#)

There are no such residues in this entry.

## 5.8 Polymer linkage issues [i](#)

There are no chain breaks in this entry.



## 6 Fit of model and data [i](#)

### 6.1 Protein, DNA and RNA chains [i](#)

Unable to reproduce the depositors R factor - this section is therefore empty.

### 6.2 Non-standard residues in protein, DNA, RNA chains [i](#)

Unable to reproduce the depositors R factor - this section is therefore empty.

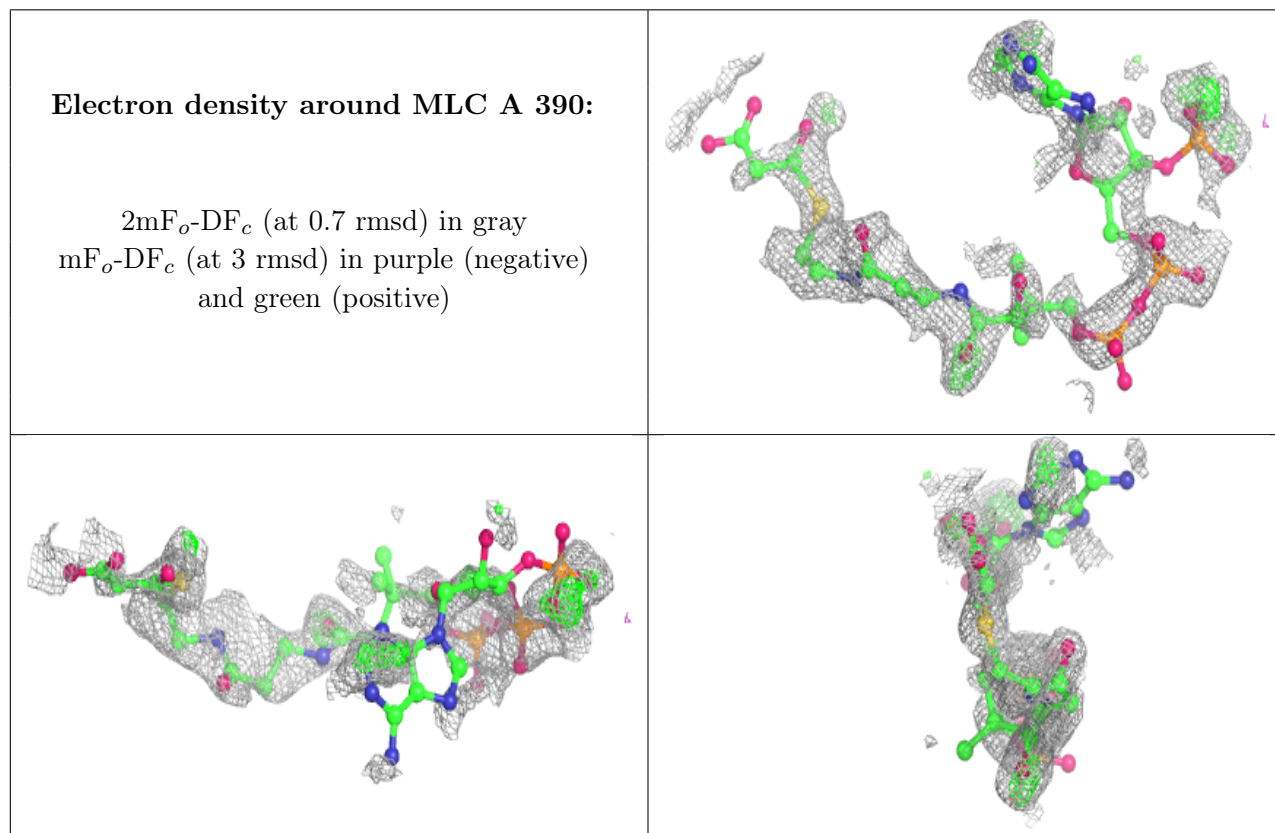
### 6.3 Carbohydrates [i](#)

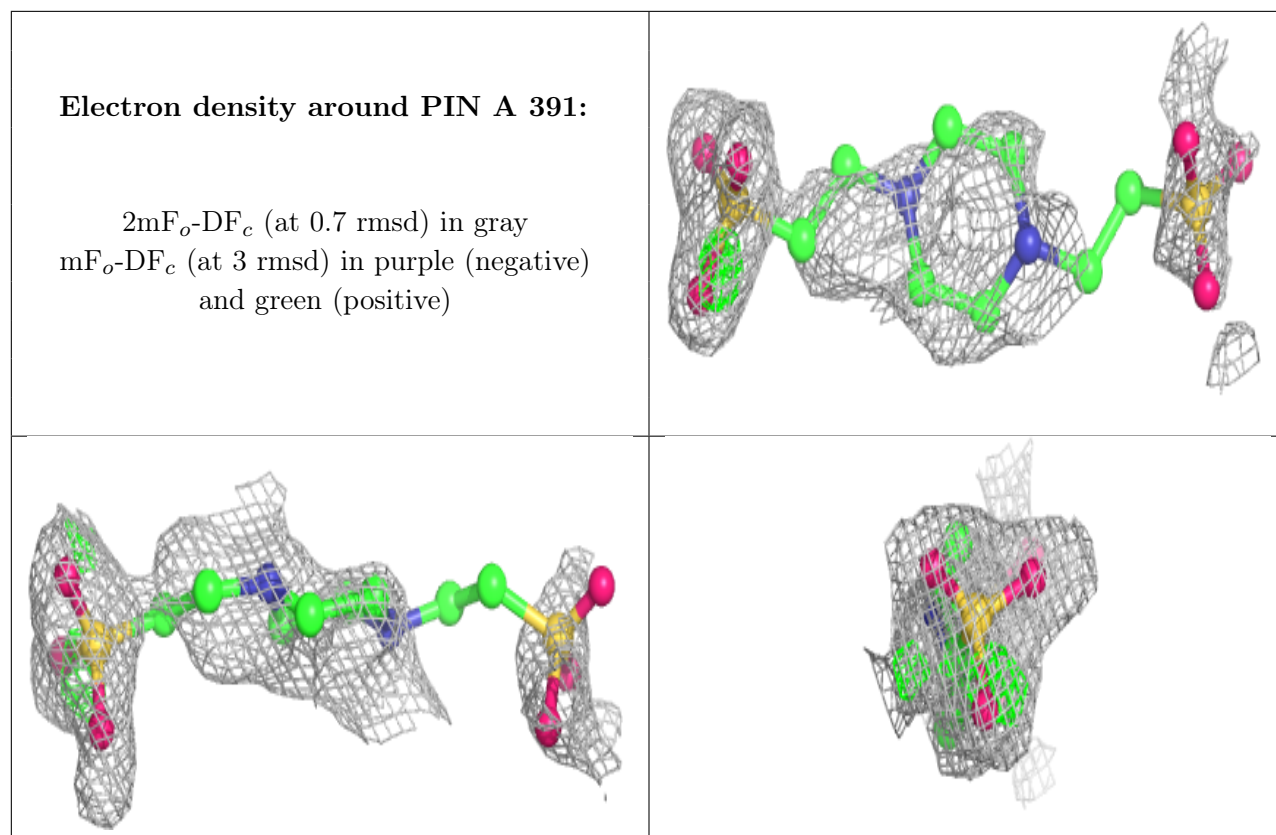
Unable to reproduce the depositors R factor - this section is therefore empty.

### 6.4 Ligands [i](#)

Unable to reproduce the depositors R factor - this section is therefore empty.

The following is a graphical depiction of the model fit to experimental electron density of all instances of the Ligand of Interest. In addition, ligands with molecular weight > 250 and outliers as shown on the geometry validation Tables will also be included. Each fit is shown from different orientation to approximate a three-dimensional view.





## 6.5 Other polymers [i](#)

Unable to reproduce the depositor's R factor - this section is therefore empty.