



Full wwPDB X-ray Structure Validation Report ⓘ

May 24, 2020 – 01:36 am BST

PDB ID : 6CHZ
Title : Estrogen Receptor Alpha Y537S bound to antagonist H3B-9224.
Authors : Larsen, N.A.
Deposited on : 2018-02-23
Resolution : 1.68 Å(reported)

This is a Full wwPDB X-ray Structure Validation Report for a publicly released PDB entry.

We welcome your comments at validation@mail.wwpdb.org

A user guide is available at

<https://www.wwpdb.org/validation/2017/XrayValidationReportHelp>

with specific help available everywhere you see the ⓘ symbol.

The following versions of software and data (see [references ⓘ](#)) were used in the production of this report:

MolProbity : 4.02b-467
Mogul : 1.8.5 (274361), CSD as541be (2020)
Xtriage (Phenix) : 1.13
EDS : 2.11
buster-report : 1.1.7 (2018)
Percentile statistics : 20191225.v01 (using entries in the PDB archive December 25th 2019)
Refmac : 5.8.0158
CCP4 : 7.0.044 (Gargrove)
Ideal geometry (proteins) : Engh & Huber (2001)
Ideal geometry (DNA, RNA) : Parkinson et al. (1996)
Validation Pipeline (wwPDB-VP) : 2.11

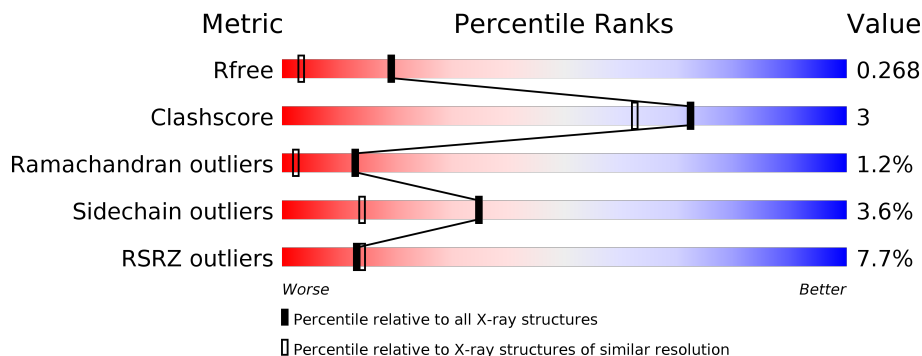
1 Overall quality at a glance

The following experimental techniques were used to determine the structure:

X-RAY DIFFRACTION

The reported resolution of this entry is 1.68 Å.

Percentile scores (ranging between 0-100) for global validation metrics of the entry are shown in the following graphic. The table shows the number of entries on which the scores are based.



Metric	Whole archive (#Entries)	Similar resolution (#Entries, resolution range(Å))
R_{free}	130704	6780 (1.70-1.66)
Clashscore	141614	7310 (1.70-1.66)
Ramachandran outliers	138981	7173 (1.70-1.66)
Sidechain outliers	138945	7172 (1.70-1.66)
RSRZ outliers	127900	6661 (1.70-1.66)

The table below summarises the geometric issues observed across the polymeric chains and their fit to the electron density. The red, orange, yellow and green segments on the lower bar indicate the fraction of residues that contain outliers for ≥ 3 , 2, 1 and 0 types of geometric quality criteria respectively. A grey segment represents the fraction of residues that are not modelled. The numeric value for each fraction is indicated below the corresponding segment, with a dot representing fractions $\leq 5\%$. The upper red bar (where present) indicates the fraction of residues that have poor fit to the electron density. The numeric value is given above the bar.

Mol	Chain	Length	Quality of chain
1	A	263	

2 Entry composition [i](#)

There are 4 unique types of molecules in this entry. The entry contains 2147 atoms, of which 0 are hydrogens and 0 are deuteriums.

In the tables below, the ZeroOcc column contains the number of atoms modelled with zero occupancy, the AltConf column contains the number of residues with at least one atom in alternate conformation and the Trace column contains the number of residues modelled with at most 2 atoms.

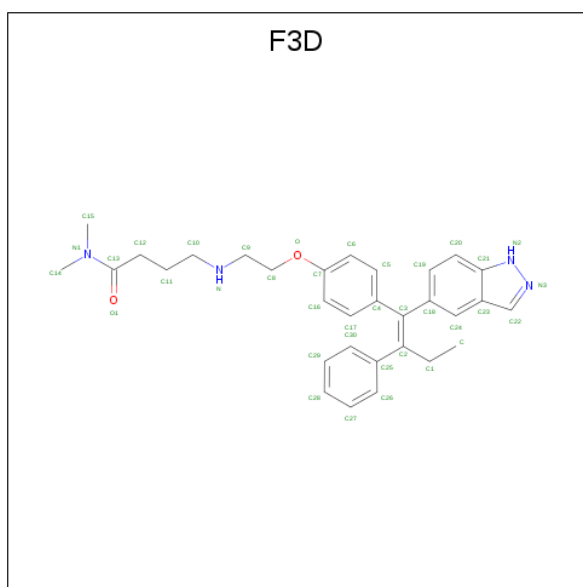
- Molecule 1 is a protein called Estrogen receptor.

Mol	Chain	Residues	Atoms					ZeroOcc	AltConf	Trace
			Total	C	N	O	S			
1	A	246	1995	1280	339	357	19	0	9	0

There are 18 discrepancies between the modelled and reference sequences:

Chain	Residue	Modelled	Actual	Comment	Reference
A	292	MET	-	initiating methionine	UNP P03372
A	293	GLY	-	expression tag	UNP P03372
A	294	HIS	-	expression tag	UNP P03372
A	295	HIS	-	expression tag	UNP P03372
A	296	HIS	-	expression tag	UNP P03372
A	297	HIS	-	expression tag	UNP P03372
A	298	HIS	-	expression tag	UNP P03372
A	299	HIS	-	expression tag	UNP P03372
A	300	GLU	-	expression tag	UNP P03372
A	301	ASN	-	expression tag	UNP P03372
A	302	LEU	-	expression tag	UNP P03372
A	303	TYR	-	expression tag	UNP P03372
A	304	PHE	-	expression tag	UNP P03372
A	305	GLN	-	expression tag	UNP P03372
A	306	LEU	-	expression tag	UNP P03372
A	381	SER	CYS	engineered mutation	UNP P03372
A	417	SER	CYS	engineered mutation	UNP P03372
A	537	SER	TYR	engineered mutation	UNP P03372

- Molecule 2 is 4-[(2-{4-[(1E)-1-(1H-indazol-5-yl)-2-phenylbut-1-en-1-yl]phenoxy}ethyl)amino]-N,N-dimethylbutanamide (three-letter code: F3D) (formula: C₃₁H₃₆N₄O₂).



Mol	Chain	Residues	Atoms				ZeroOcc	AltConf
			Total	C	N	O		
2	A	1	37	31	4	2	0	0

- Molecule 3 is 1,2-ETHANEDIOL (three-letter code: EDO) (formula: C₂H₆O₂).



Mol	Chain	Residues	Atoms			ZeroOcc	AltConf
			Total	C	O		
3	A	1	4	2	2	0	0


- Molecule 4 is water.

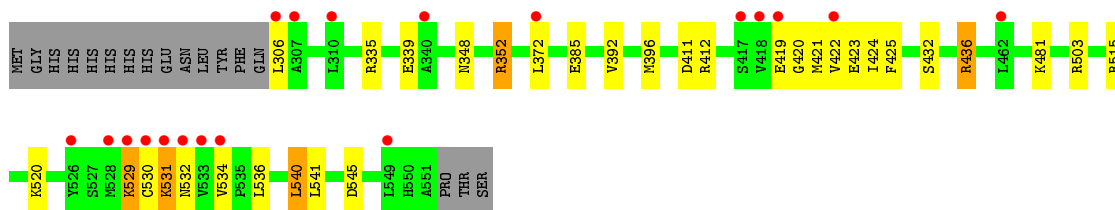
Mol	Chain	Residues	Atoms		ZeroOcc	AltConf
4	A	111	Total 111	O 111	0	0

3 Residue-property plots [i](#)

These plots are drawn for all protein, RNA and DNA chains in the entry. The first graphic for a chain summarises the proportions of the various outlier classes displayed in the second graphic. The second graphic shows the sequence view annotated by issues in geometry and electron density. Residues are color-coded according to the number of geometric quality criteria for which they contain at least one outlier: green = 0, yellow = 1, orange = 2 and red = 3 or more. A red dot above a residue indicates a poor fit to the electron density ($RSRZ > 2$). Stretches of 2 or more consecutive residues without any outlier are shown as a green connector. Residues present in the sample, but not in the model, are shown in grey.

- Molecule 1: Estrogen receptor

Chain A: 



4 Data and refinement statistics

Property	Value	Source
Space group	P 65 2 2	Depositor
Cell constants a, b, c, α , β , γ	58.61Å 58.61Å 276.30Å 90.00° 90.00° 120.00°	Depositor
Resolution (Å)	50.76 – 1.68 47.64 – 1.68	Depositor EDS
% Data completeness (in resolution range)	99.7 (50.76-1.68) 99.7 (47.64-1.68)	Depositor EDS
R_{merge}	0.11	Depositor
R_{sym}	(Not available)	Depositor
$\langle I/\sigma(I) \rangle$ ¹	2.69 (at 1.68Å)	Xtrriage
Refinement program	REFMAC 5.8.0158	Depositor
R, R_{free}	0.212 , 0.262 0.225 , 0.268	Depositor DCC
R_{free} test set	1597 reflections (4.80%)	wwPDB-VP
Wilson B-factor (Å ²)	35.7	Xtrriage
Anisotropy	0.065	Xtrriage
Bulk solvent k_{sol} (e/Å ³), B_{sol} (Å ²)	0.33 , 46.4	EDS
L-test for twinning ²	$\langle L \rangle = 0.47$, $\langle L^2 \rangle = 0.30$	Xtrriage
Estimated twinning fraction	No twinning to report.	Xtrriage
F_o, F_c correlation	0.96	EDS
Total number of atoms	2147	wwPDB-VP
Average B, all atoms (Å ²)	44.0	wwPDB-VP

Xtrriage's analysis on translational NCS is as follows: *The largest off-origin peak in the Patterson function is 5.55% of the height of the origin peak. No significant pseudotranslation is detected.*

¹Intensities estimated from amplitudes.

²Theoretical values of $\langle |L| \rangle$, $\langle L^2 \rangle$ for acentric reflections are 0.5, 0.333 respectively for untwinned datasets, and 0.375, 0.2 for perfectly twinned datasets.

5 Model quality [i](#)

5.1 Standard geometry [i](#)

Bond lengths and bond angles in the following residue types are not validated in this section: F3D, EDO

The Z score for a bond length (or angle) is the number of standard deviations the observed value is removed from the expected value. A bond length (or angle) with $|Z| > 5$ is considered an outlier worth inspection. RMSZ is the root-mean-square of all Z scores of the bond lengths (or angles).

Mol	Chain	Bond lengths		Bond angles	
		RMSZ	# Z >5	RMSZ	# Z >5
1	A	0.96	2/2060 (0.1%)	1.05	9/2783 (0.3%)

All (2) bond length outliers are listed below:

Mol	Chain	Res	Type	Atoms	Z	Observed(Å)	Ideal(Å)
1	A	425	PHE	CB-CG	-5.99	1.41	1.51
1	A	385	GLU	CD-OE2	-5.86	1.19	1.25

All (9) bond angle outliers are listed below:

Mol	Chain	Res	Type	Atoms	Z	Observed(°)	Ideal(°)
1	A	436	ARG	NE-CZ-NH1	10.77	125.68	120.30
1	A	352	ARG	NE-CZ-NH1	6.38	123.49	120.30
1	A	545	ASP	CB-CG-OD1	-6.29	112.64	118.30
1	A	411	ASP	CB-CG-OD1	6.08	123.77	118.30
1	A	412	ARG	NE-CZ-NH1	5.90	123.25	120.30
1	A	515	ARG	NE-CZ-NH2	-5.76	117.42	120.30
1	A	540	LEU	CB-CG-CD1	5.58	120.48	111.00
1	A	503	ARG	NE-CZ-NH1	5.38	122.99	120.30
1	A	436	ARG	NE-CZ-NH2	-5.15	117.72	120.30

There are no chirality outliers.

There are no planarity outliers.

5.2 Too-close contacts [i](#)

In the following table, the Non-H and H(model) columns list the number of non-hydrogen atoms and hydrogen atoms in the chain respectively. The H(added) column lists the number of hydrogen atoms added and optimized by MolProbity. The Clashes column lists the number of clashes within

the asymmetric unit, whereas Symm-Clashes lists symmetry related clashes.

Mol	Chain	Non-H	H(model)	H(added)	Clashes	Symm-Clashes
1	A	1995	0	2068	14	0
2	A	37	0	0	0	0
3	A	4	0	5	0	0
4	A	111	0	0	2	1
All	All	2147	0	2073	14	1

The all-atom clashscore is defined as the number of clashes found per 1000 atoms (including hydrogen atoms). The all-atom clashscore for this structure is 3.

All (14) close contacts within the same asymmetric unit are listed below, sorted by their clash magnitude.

Atom-1	Atom-2	Interatomic distance (Å)	Clash overlap (Å)
1:A:352:ARG:NH2	4:A:701:HOH:O	1.84	0.62
1:A:424:ILE:HD11	1:A:520:LYS:HB2	1.82	0.61
1:A:424:ILE:HD11	1:A:520:LYS:CB	2.40	0.52
1:A:372[B]:LEU:HD11	1:A:541:LEU:HD12	1.92	0.51
1:A:396:MET:O	1:A:436:ARG:HD3	2.12	0.50
1:A:392:VAL:HG13	1:A:432:SER:HA	1.92	0.50
1:A:348[A]:ASN:ND2	4:A:705:HOH:O	2.49	0.45
1:A:392:VAL:HG13	1:A:432:SER:CA	2.47	0.45
1:A:335:ARG:NH2	1:A:339:GLU:OE2	2.53	0.42
1:A:423:GLU:CD	1:A:423:GLU:H	2.24	0.42
1:A:529:LYS:O	1:A:531:LYS:N	2.53	0.41

All (1) symmetry-related close contacts are listed below. The label for Atom-2 includes the symmetry operator and encoded unit-cell translations to be applied.

Atom-1	Atom-2	Interatomic distance (Å)	Clash overlap (Å)
4:A:792:HOH:O	4:A:792:HOH:O[8_555]	2.09	0.11

5.3 Torsion angles [i](#)

5.3.1 Protein backbone [i](#)

In the following table, the Percentiles column shows the percent Ramachandran outliers of the chain as a percentile score with respect to all X-ray entries followed by that with respect to entries of similar resolution.

The Analysed column shows the number of residues for which the backbone conformation was

analysed, and the total number of residues.

Mol	Chain	Analysed	Favoured	Allowed	Outliers	Percentiles
1	A	253/263 (96%)	242 (96%)	8 (3%)	3 (1%)	13 2

All (3) Ramachandran outliers are listed below:

Mol	Chain	Res	Type
1	A	532	ASN
1	A	530	CYS
1	A	531	LYS

5.3.2 Protein sidechains [i](#)

In the following table, the Percentiles column shows the percent sidechain outliers of the chain as a percentile score with respect to all X-ray entries followed by that with respect to entries of similar resolution.

The Analysed column shows the number of residues for which the sidechain conformation was analysed, and the total number of residues.

Mol	Chain	Analysed	Rotameric	Outliers	Percentiles
1	A	229/237 (97%)	220 (96%)	9 (4%)	32 12

All (9) residues with a non-rotameric sidechain are listed below:

Mol	Chain	Res	Type
1	A	306	LEU
1	A	419	GLU
1	A	421[A]	MET
1	A	421[B]	MET
1	A	481	LYS
1	A	529	LYS
1	A	534	VAL
1	A	536	LEU
1	A	540	LEU

Some sidechains can be flipped to improve hydrogen bonding and reduce clashes. All (2) such sidechains are listed below:

Mol	Chain	Res	Type
1	A	501	HIS
1	A	513	HIS

5.3.3 RNA [i](#)

There are no RNA molecules in this entry.

5.4 Non-standard residues in protein, DNA, RNA chains [i](#)

There are no non-standard protein/DNA/RNA residues in this entry.

5.5 Carbohydrates [i](#)

There are no carbohydrates in this entry.

5.6 Ligand geometry [i](#)

2 ligands are modelled in this entry.

In the following table, the Counts columns list the number of bonds (or angles) for which Mogul statistics could be retrieved, the number of bonds (or angles) that are observed in the model and the number of bonds (or angles) that are defined in the Chemical Component Dictionary. The Link column lists molecule types, if any, to which the group is linked. The Z score for a bond length (or angle) is the number of standard deviations the observed value is removed from the expected value. A bond length (or angle) with $|Z| > 2$ is considered an outlier worth inspection. RMSZ is the root-mean-square of all Z scores of the bond lengths (or angles).

Mol	Type	Chain	Res	Link	Bond lengths			Bond angles		
					Counts	RMSZ	# Z > 2	Counts	RMSZ	# Z > 2
2	F3D	A	601	-	38,40,40	2.30	9 (23%)	48,53,53	2.00	17 (35%)
3	EDO	A	602	-	3,3,3	1.09	0	2,2,2	1.98	1 (50%)

In the following table, the Chirals column lists the number of chiral outliers, the number of chiral centers analysed, the number of these observed in the model and the number defined in the Chemical Component Dictionary. Similar counts are reported in the Torsion and Rings columns. '-' means no outliers of that kind were identified.

Mol	Type	Chain	Res	Link	Chirals	Torsions	Rings
2	F3D	A	601	-	-	4/32/32/32	0/4/4/4
3	EDO	A	602	-	-	0/1/1/1	-

All (9) bond length outliers are listed below:

Mol	Chain	Res	Type	Atoms	Z	Observed(Å)	Ideal(Å)
2	A	601	F3D	C3-C2	7.68	1.50	1.35

Continued on next page...

Continued from previous page...

Mol	Chain	Res	Type	Atoms	Z	Observed(Å)	Ideal(Å)
2	A	601	F3D	C13-N1	4.83	1.40	1.34
2	A	601	F3D	C25-C2	-4.45	1.41	1.49
2	A	601	F3D	C22-C23	-4.30	1.31	1.40
2	A	601	F3D	C20-C21	-4.13	1.34	1.41
2	A	601	F3D	C18-C3	-3.49	1.43	1.49
2	A	601	F3D	C24-C23	-3.20	1.34	1.42
2	A	601	F3D	C12-C13	2.81	1.57	1.51
2	A	601	F3D	C4-C3	-2.60	1.45	1.49

All (18) bond angle outliers are listed below:

Mol	Chain	Res	Type	Atoms	Z	Observed(°)	Ideal(°)
2	A	601	F3D	C16-C17-C4	5.44	127.10	120.78
2	A	601	F3D	C19-C18-C24	-4.98	113.29	119.23
2	A	601	F3D	C5-C6-C7	3.85	124.44	119.73
2	A	601	F3D	C8-O-C7	3.83	127.94	117.93
2	A	601	F3D	C17-C4-C3	3.41	126.32	120.91
2	A	601	F3D	C24-C23-C21	3.22	124.37	119.87
2	A	601	F3D	C26-C25-C2	3.06	124.94	121.01
2	A	601	F3D	C17-C4-C5	-3.02	114.29	118.59
2	A	601	F3D	C30-C25-C2	-2.97	117.20	121.01
2	A	601	F3D	C1-C2-C3	-2.60	120.76	123.47
2	A	601	F3D	C17-C16-C7	-2.57	116.59	119.73
3	A	602	EDO	O1-C1-C2	-2.53	93.73	111.91
2	A	601	F3D	C20-C21-N2	2.42	134.14	130.19
2	A	601	F3D	O-C8-C9	2.35	112.84	107.81
2	A	601	F3D	C16-C7-C6	-2.29	116.64	120.18
2	A	601	F3D	C27-C26-C25	2.23	122.98	120.34
2	A	601	F3D	C24-C18-C3	2.12	125.20	121.47
2	A	601	F3D	C20-C19-C18	2.05	123.10	120.79

There are no chirality outliers.

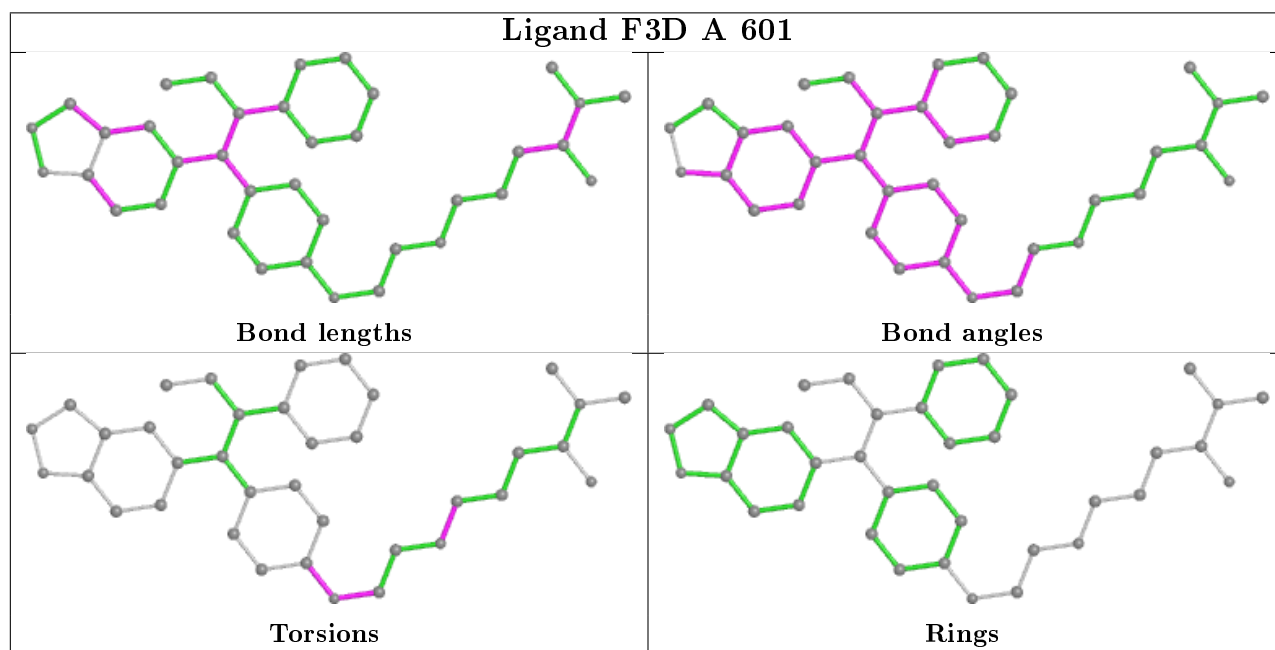
All (4) torsion outliers are listed below:

Mol	Chain	Res	Type	Atoms
2	A	601	F3D	C6-C7-O-C8
2	A	601	F3D	C16-C7-O-C8
2	A	601	F3D	C9-C8-O-C7
2	A	601	F3D	C11-C10-N-C9

There are no ring outliers.

No monomer is involved in short contacts.

The following is a two-dimensional graphical depiction of Mogul quality analysis of bond lengths, bond angles, torsion angles, and ring geometry for all instances of the Ligand of Interest. In addition, ligands with molecular weight > 250 and outliers as shown on the validation Tables will also be included. For torsion angles, if less than 5% of the Mogul distribution of torsion angles is within 10 degrees of the torsion angle in question, then that torsion angle is considered an outlier. Any bond that is central to one or more torsion angles identified as an outlier by Mogul will be highlighted in the graph. For rings, the root-mean-square deviation (RMSD) between the ring in question and similar rings identified by Mogul is calculated over all ring torsion angles. If the average RMSD is greater than 60 degrees and the minimal RMSD between the ring in question and any Mogul-identified rings is also greater than 60 degrees, then that ring is considered an outlier. The outliers are highlighted in purple. The color gray indicates Mogul did not find sufficient equivalents in the CSD to analyse the geometry.



5.7 Other polymers [i](#)

There are no such residues in this entry.

5.8 Polymer linkage issues [i](#)

There are no chain breaks in this entry.

6 Fit of model and data [i](#)

6.1 Protein, DNA and RNA chains [i](#)

In the following table, the column labelled ‘#RSRZ> 2’ contains the number (and percentage) of RSRZ outliers, followed by percent RSRZ outliers for the chain as percentile scores relative to all X-ray entries and entries of similar resolution. The OWAB column contains the minimum, median, 95th percentile and maximum values of the occupancy-weighted average B-factor per residue. The column labelled ‘Q< 0.9’ lists the number of (and percentage) of residues with an average occupancy less than 0.9.

Mol	Chain	Analysed	<RSRZ>	#RSRZ>2	OWAB(Å ²)	Q<0.9
1	A	246/263 (93%)	0.31	19 (7%) 13 14	25, 40, 74, 143	0

All (19) RSRZ outliers are listed below:

Mol	Chain	Res	Type	RSRZ
1	A	530	CYS	10.6
1	A	526	TYR	8.8
1	A	531	LYS	7.6
1	A	532	ASN	6.3
1	A	306	LEU	5.7
1	A	529	LYS	5.3
1	A	418	VAL	4.3
1	A	533	VAL	3.9
1	A	534	VAL	3.6
1	A	419	GLU	3.6
1	A	340	ALA	3.6
1	A	417	SER	3.2
1	A	307	ALA	3.0
1	A	528	MET	2.9
1	A	462	LEU	2.5
1	A	422	VAL	2.3
1	A	549	LEU	2.1
1	A	372[A]	LEU	2.1
1	A	310	LEU	2.0

6.2 Non-standard residues in protein, DNA, RNA chains [i](#)

There are no non-standard protein/DNA/RNA residues in this entry.

6.3 Carbohydrates [i](#)

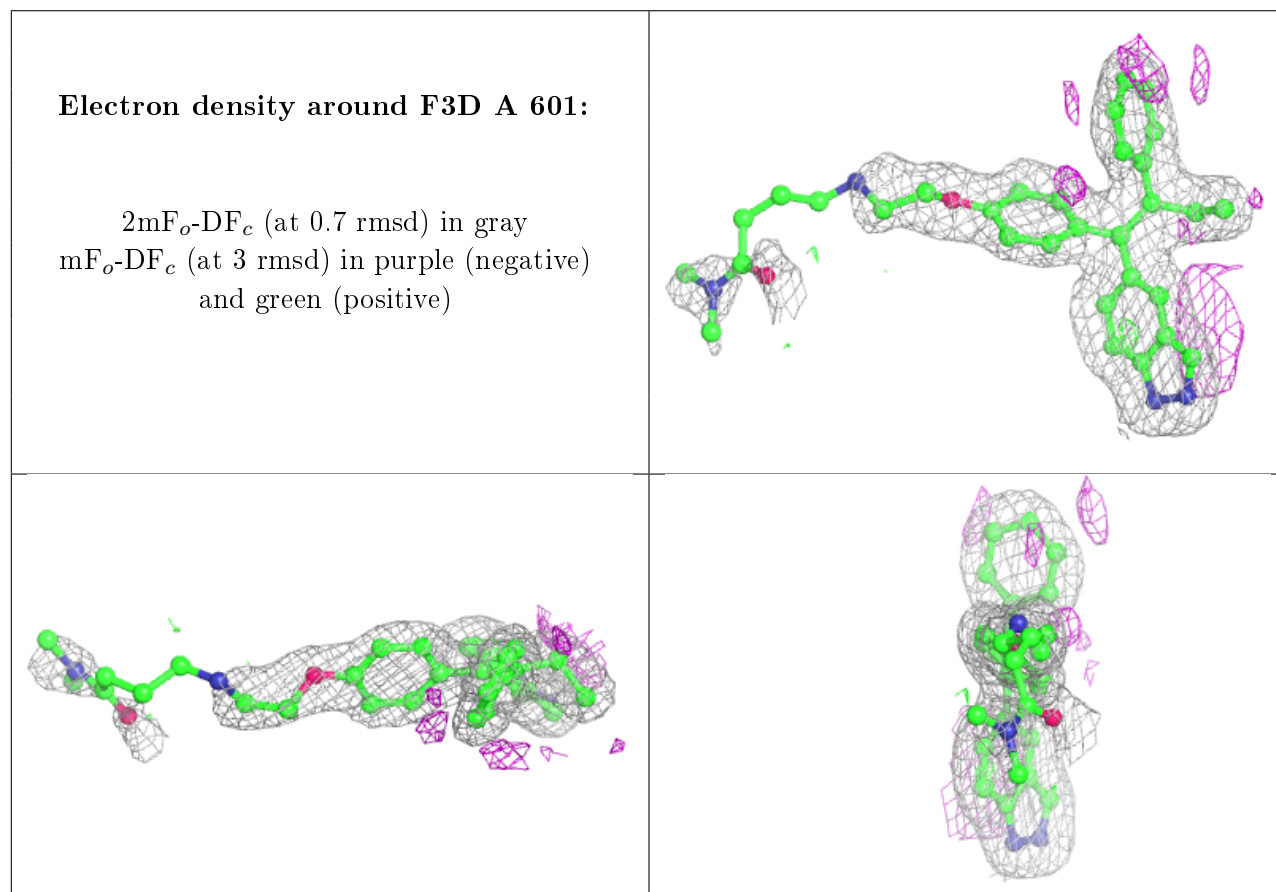
There are no carbohydrates in this entry.

6.4 Ligands [i](#)

In the following table, the Atoms column lists the number of modelled atoms in the group and the number defined in the chemical component dictionary. The B-factors column lists the minimum, median, 95th percentile and maximum values of B factors of atoms in the group. The column labelled 'Q< 0.9' lists the number of atoms with occupancy less than 0.9.

Mol	Type	Chain	Res	Atoms	RSCC	RSR	B-factors(Å ²)	Q<0.9
2	F3D	A	601	37/37	0.94	0.11	26,30,95,100	0
3	EDO	A	602	4/4	0.98	0.09	31,34,39,43	0

The following is a graphical depiction of the model fit to experimental electron density of all instances of the Ligand of Interest. In addition, ligands with molecular weight > 250 and outliers as shown on the geometry validation Tables will also be included. Each fit is shown from different orientation to approximate a three-dimensional view.



6.5 Other polymers

There are no such residues in this entry.